

INFILL DRILLING ON WOODLEY'S SHEAR DELIVERS MORE HIGH-GRADE RESULTS

Plus, regional exploration programme returns the deepest high-grade intersection to date outside the current Mineral Resource

HIGHLIGHTS

- > Latest drilling results provide additional evidence that show Rothsay is on track to becoming a significant high-grade WA gold project
- > Latest results from the infill and extensional diamond drill campaign at the key Woodley's and Woodley's East Shears and regional drilling on the Clyde & Miners Shears include:
 - 1.5m at 11.0g/t Au from 320.0m - Woodley's Shear (RYDD055)
 - 1.2m at 11.2g/t Au from 417.0m - Woodley's Shear (RYDD064)
 - 0.3m at 27.2g/t Au from 146.5m - Woodley's East Hangingwall (RYDD054)
 - 0.5m at 9.4g/t Au from 175.0m - Woodley's East Hangingwall (RYDD055)
 - 0.3m at 8.2g/t Au from 291.2m - Woodley's East Hangingwall (RYDD056)
 - 0.95m at 7.6g/t Au from 237.3m – The Miners Shear (RYDD061)
- > A mineralised quartz vein measuring 1.2m at 11.2g/t Au downhole containing visible gold has been intercepted in RYDD064, on Woodley's Shear; This confirms the resource is open and continues at depth
- > The results from infill, extensional and regional drilling will form part of the Resource update, which is on track to be delivered next month
- > The updated Resource will feed into the ongoing Definitive Feasibility Study, which is on track for completion next quarter.

EganStreet Resources (ASX: EGA) is pleased to announce additional outstanding high-grade drilling results which will form part of the impending Resource update and Definitive Feasibility Study on its Rothsay Gold Project in WA.

The results come from four diamond holes which were drilled as part of the infill and extensional programme at the key Woodley's and Woodley's East Shears at Rothsay, plus two diamond drill holes as part of the regional exploration programme which targeted the northern end of the Miners Shear and the Clyde Shear

The current Rothsay Resource stands at 307,000oz at 10.9g/t Au.

WOODLEY'S & WOODLEY'S EAST INFILL AND EXTENSIONAL DRILLING RESULTS

The infill drilling includes deeper holes on the Woodley's Shear which targeted the inferred zone of the current Resource, this will feed into the April Resource update. Positive results were returned including RYDD064 (1.2m at 11.2g/t Au) and RYDD055 (1.5m at 11.0g/t Au).

The previously reported hole, RYDD051, was designed to target the inferred material some 40 metres below diamond drill hole MRD259 (2.8m at 35.4g/t Au). However due to the hole lifting, hole RYDD051 (2.55m at 32.9g/t Au including 1.1m at 68.5g/t Au), came within 12 metres of hole MRD259. While the high-grade hit confirms the earlier result from MRD259, there remained inferred material to infill. Hole RYDD064 was then designed to intercept the original target, allowing for some lifting of the hole as it was drilled. However, on this occasion the hole did not lift as expected and returned 1.2m at 11.2g/t Au from 417m. This result is extremely pleasing because it demonstrates that the resource continues down dip and remains open at depth.

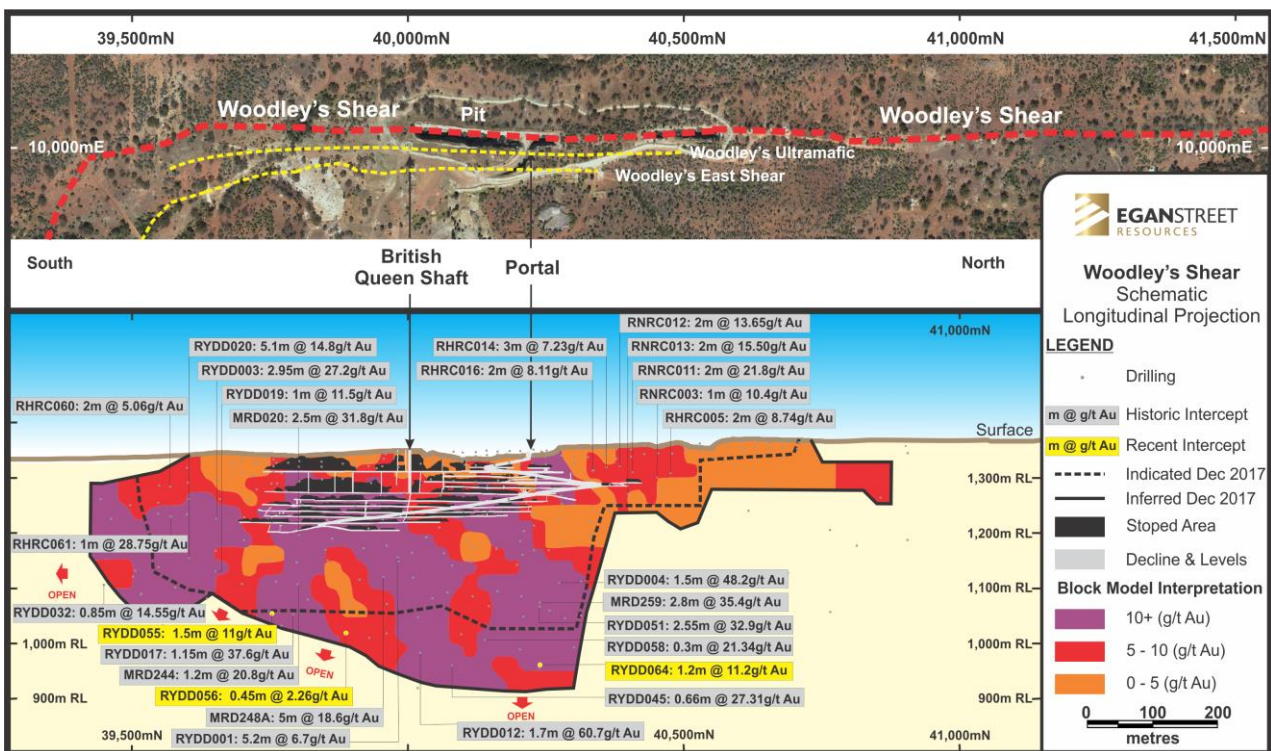


FIGURE 1 – WOODLEY'S SHEAR SHOWING SIGNIFICANT & RECENT INTERSECTIONS

There continues to be several narrow high-grade veins within the Woodley's East hanging wall that have been intercepted several times with the recent and previous extensional and infill drilling for Woodley's East. This includes 0.3m at 27.2g/t Au from 146.5m, 0.5m at 9.4g/t Au from 175m and 0.3m at 8.2g/t from 291.2m, this represents a 75% strike rate from the most recent round of drilling. To date this has not formed part of the Rothsay Mineral Resource Estimate. However, as the number of intercepts continues to increase this may require specific targeting in the future to determine if an economic resource model can be generated from these high-grade intercepts.

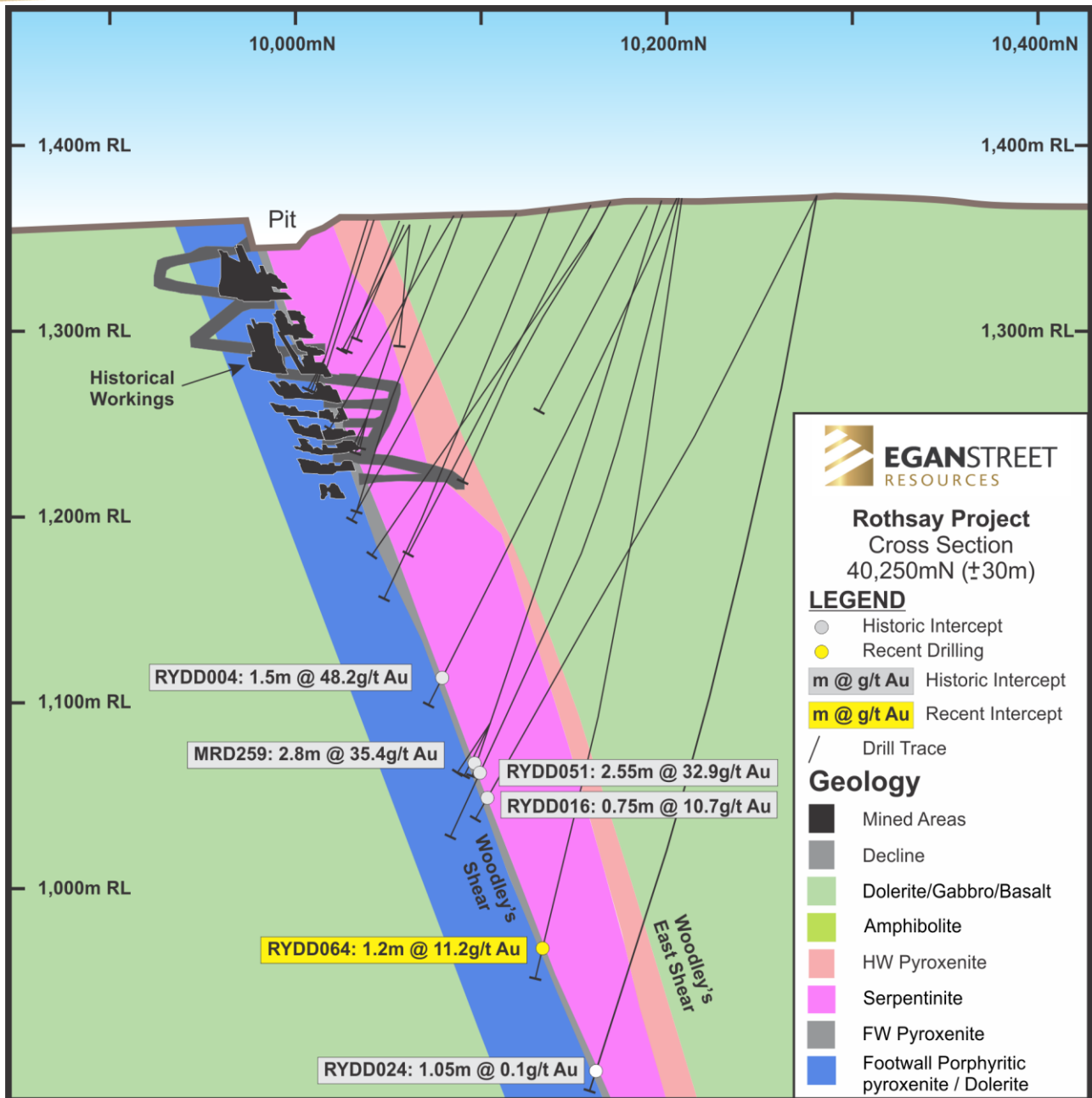
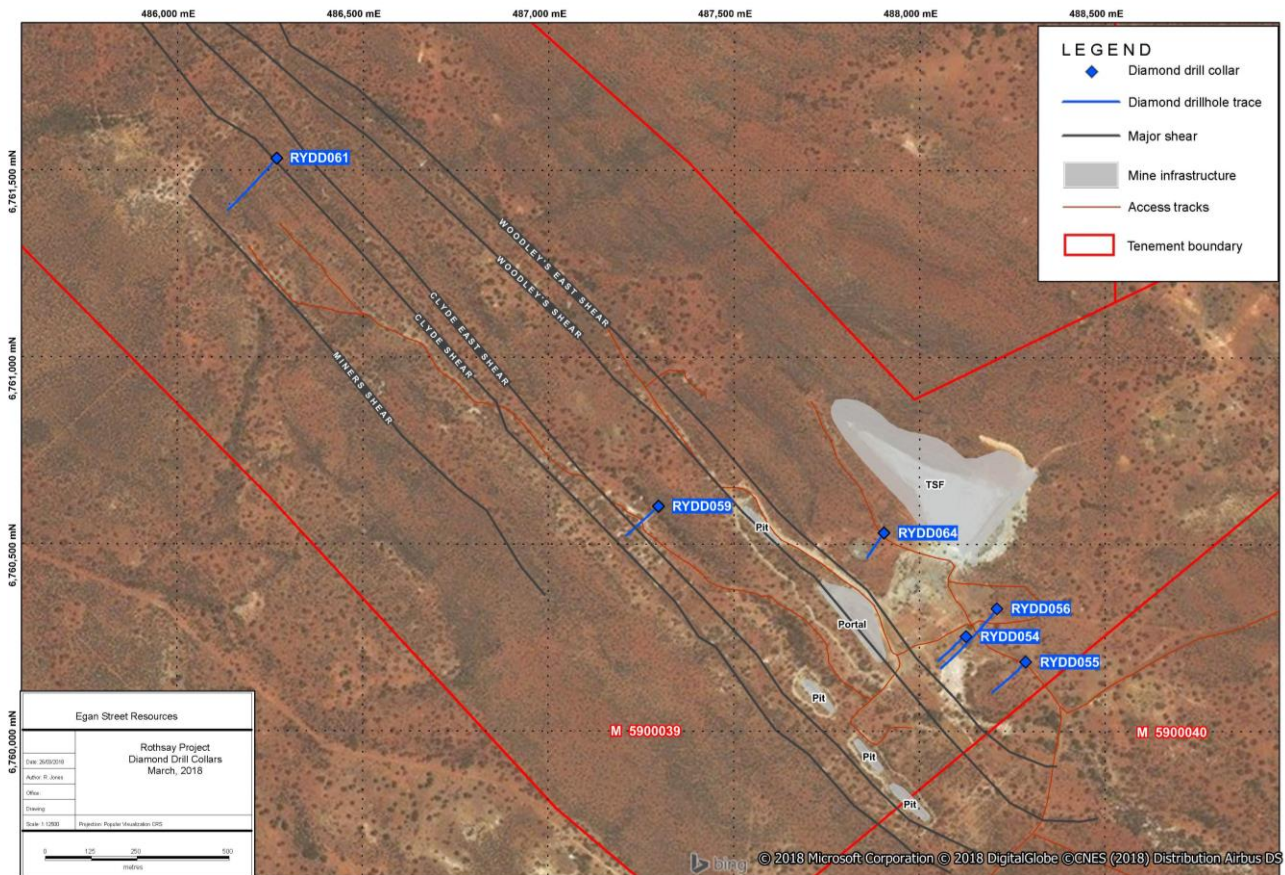


FIGURE 2 – GEOLOGICAL CROSS SECTION SHOWING SIGNIFICANT INTERSECTIONS


FIGURE 3 – ROTHSAY DRILL COLLAR POSITION & DRILL TRACE

Diamond drill hole RYDD061, which was drilled as part of the regional exploration programme, yielded 0.95m at 7.6g/t Au from 237.3m. This high-grade gold intersection is in a comparable stratigraphical position to that of the mineralisation contained within the Woodley's Shear. Additionally it is over 2km north of the Woodley's Portal and is also the deepest mineralised intersection outside of the current Mineral Resource.

The result from RYDD061 provides further confidence for EganStreet to continue its regional exploration programme over the highly prospective, high-grade Rothsay field.

TABLE 1 – SIGNIFICANT INTERSECTIONS & RESULTS

Hole ID	Location	From (m)	To (m)	Length (m)	Grade g/t Au
RYDD055	Woodley's Shear	320.0	321.5	1.5	11.0
RYDD064	Woodley's Shear	417.05	418.25	1.2	11.2
RYDD054	Woodley's East HW	146.51	146.81	0.3	27.17
RYDD055	Woodley's East HW	175	175.5	0.5	9.38
RYDD055	Woodley's East HW	194.8	195.1	0.3	7.18
RYDD056	Woodley's East HW	291.2	291.5	0.3	8.17
RYDD061	Miners Shear	237.3	238.25	0.95	7.61

For more information, please contact:

Investors:**Marc Ducler, Managing Director****T. 08 6424 8130****E. info@eganstreet.com.au****Media:****Nicholas Read, Read Corporate****T. 08 9388 1474****E. nicholas@readcorporate.com.au**

ABOUT EGANSTREET RESOURCES

EganStreet is an emerging West Australian gold company which is focused on the exploration and development of the 100%-owned Rothsay Gold Project, located 300km north-east of Perth in WA's Midwest region.

The Rothsay Project currently hosts high-grade Mineral Resources of 307koz at an average grade of 10.9g/t Au (Indicated 460kt @ 11.5g/t Au and Inferred 420kt @ 10.2g/t Au) and a production target (Pre-Feasibility Study published 16 May 2017) of 936kt @ 7.0 g/t for 200koz of gold produced.

The Company is focused on increasing the geological confidence of the Mineral Resource, expanding the known mineralisation and carrying out the necessary evaluation, modelling and feasibility studies to progress a potential near-term, low capital intensity opportunity to commence mine development and gold production operations.

A Definitive Feasibility Study is targeted for completion in the 2nd quarter of 2018.

EganStreet has a strong Board and Management team which has the necessary range of technical and commercial skills to progress the Rothsay Gold Project to production.

The Company is funded to progress the Rothsay Gold Project to a decision to mine (technical and commercial studies completed, funding secured and key construction, mining and processing contracts in place).

EganStreet's longer term growth aspirations are based on a strategy of utilising the cash-flow generated by an initial mining operation at Rothsay to target extensions of the main deposit and explore the surrounding tenements, which include a 14km strike length of highly prospective and virtually unexplored stratigraphy

APPENDIX 1 - COMPETENT PERSON'S STATEMENT

The information in this report that relates to Exploration Results is based on and fairly represents information and supporting documentation compiled by Ms. Julie Reid, a Competent Person who is a Member of The Australasian Institute of Mining and Metallurgy. Ms. Reid is a full-time employee of the Company. Ms. Reid has sufficient experience relevant to the style of mineralisation and type of deposit under consideration and to the activity being undertaking to qualify as a Competent Person as defined in the 2012 Edition of the 'Australasian Code for Reporting of Exploration Results, Mineral Resources and Ore Reserves'. Ms. Reid consents to the inclusion in the report of the matters based on this information in the form and context in which it appears.

Various information in this announcement that relates to exploration results, other than the new exploration results released in this announcement is extracted from the following announcements:

- ***"159g/t Gold Show Rothsay Set to be a High-Grade WA Gold Mine"*** dated 27 February 2018, and
- ***"Hits of up to 56g/t Gold Boost Imminent Resource"*** dated 15 February 2018, and
- ***"EganStreet Accelerates Exploration Drilling at Rothsay"*** dated 19 January 2018, and
- ***"Hits up to 110g/t to Underpin a Resource Update Revised"*** dated 15 December 2017, and
- ***"More High-Grade Hits at Rothsay Gold Project"*** dated 24 October 2017, and
- ***"New High-Grade Discoveries Expand Scale and Potential"*** dated 8 August 2017, and
- ***"Near-mine Targets highlight the Growth Potential at Rothsay"*** dated 11 July 2017, and
- ***"Drilling Confirms More High-Grade Gold Intersections"*** dated 6 February 2017, and
- the ***Prospectus*** lodged on 28 July 2016.

All of above listed ASX announcements are available to view at www.eganstreetresources.com.au and www.asx.com.au

The Company confirms that it is not aware of any new information or data that materially affects the information included in the announcements referred to above or the Prospectus. The Company confirms that the form and context in which the Competent Person's findings are presented have not been materially modified from the announcements referred to above or the Prospectus.

The information in this announcement that relates to the Rothsay Mineral Resource is extracted from the announcement titled "Rothsay Resources Grow to More Than 300,000ozs" lodged on 4 December 2017 which is available to view at www.eganstreetresources.com.au and www.asx.com.au. The Company confirms that it is not aware of any new information or data that materially affects the information included in the original market announcement and that all material assumptions and technical parameters underpinning the Mineral Resource estimate continue to apply and have not materially changed. The Company confirms that the form and context in which the Competent Person's findings are presented have not been materially modified from the original market announcement.

Information in relation to the Rothsay Project Pre-feasibility Study, including production targets and financial information, included in this report is extracted from an ASX Announcement dated 16 May 2017 (see ASX Announcement – 16 May 2017, "Rothsay PFS Confirms Potential New High-Grade Gold Project", www.eganstreetresources.com.au and www.asx.com.au). The Company confirms that all material assumptions underpinning the production target and financial information set out in the announcement released on 16 May 2017 continue to apply and have not materially changed.

APPENDIX 2 - DRILLHOLE DATA

TABLE 2 – COLLAR CO-ORDINATE DETAILS

Hole ID	Type	End of Hole Depth (m)	GDA (North)	GDA (East)	GDA RL	Dip	MGA Azmith
RYDD054	DD	204.6	6,760,404	488,266	1,349.4	-61	225.7
RYDD055	DD	336.9	6,760,336	488,427	1,364.8	-73	220.7
RYDD056	DD	417.7	6,760,478	488,349	1,348.9	-63	217.7
RYDD059	DD	237.7	6,760,752	487,437	1,361.2	-60	227.0
RYDD061	DD	426.8	6,761,682	488,408	1,356.9	-60	224.0
RYDD064	DD	427	6,760,680	488,045	1,370.8	-82	216.7

TABLE 3 – ROTHSAY RECENT DRILLING INTERSECTIONS

Hole ID	Location	From (m)	To (m)	Length (m)	Grade g/t Au
RYDD055	Woodley's Shear	320	321.5	1.5	11.0
RYDD056	Woodley's Shear	388.55	389	0.45	2.26
RYDD064	Woodley's Shear	417.05	418.25	1.2	11.2
RYDD054	Woodley's East HW	146.51	148.81	0.3	27.17
RYDD055	Woodley's East HW	175	175.5	0.5	1.0
RYDD055	Woodley's East HW	194.8	195.1	0.3	7.177
RYDD056	Woodley's East HW	291.2	291.5	0.3	8.174
RYDD059	Clyde Shear	126.67	127.05	0.38	0.284
RYDD061	Miners Shear	237.3	238.25	0.95	7.613

APPENDIX 3 - JORC CODE, 2012 EDITION –TABLE 1 REPORT

SECTION 1 SAMPLING TECHNIQUES AND DATA

(Criteria in this section apply to all succeeding sections.)

CRITERIA	JORC CODE EXPLANATION	COMMENTARY
Sampling techniques	Nature and quality of sampling (e.g. cut channels, random chips, or specific specialised industry standard measurement tools appropriate to the minerals under investigation, such as down hole gamma sondes, or handheld XRF instruments, etc.). These examples should not be taken as limiting the broad meaning of sampling	All core was orientated, logged geologically and marked up for assay at a maximum sample interval of 1.2 metres constrained by geological boundaries. Drill core is cut in half by a diamond saw and half NQ core samples submitted for assay analysis. Samples taken in the HQ core were halved and the halved again, so a quarter core sample was taken where the sample length was over 0.5m. All diamond core is stored in industry standard core trays labelled with the drill hole ID and core interval.
	Include reference to measures taken to ensure sample representation and the appropriate calibration of any measurement tools or systems used.	Sampling was carried out under EganStreet's protocols and QAQC procedures as per industry best practice. See further details below. There is a lack of detailed information available pertaining to QAQC practices prior to 2012.
	Aspects of the determination of mineralisation that are Material to the Public Report. In cases where 'industry standard' work has been done this would be relatively simple (e.g. 'reverse circulation drilling was used to obtain 1 m samples from which 3 kg was pulverised to produce a 30 g charge for fire assay'). In other cases, more explanation may be required, such as where there is coarse gold that has inherent sampling problems. Unusual commodities or mineralisation types (e.g. submarine nodules) may warrant disclosure of detailed information.	<p>The project has been sampled using industry standard diamond drilling techniques. Diamond (DDH) drilling at Rothsay used HQ and NQ2 sizes. Down hole surveying has been undertaken using single shot cameras whilst drilling and gyroscopic instrumentation once hole completed.</p> <p><u>Historical Drilling:</u> Several generations of drilling have been undertaken and historic data gathered by a number of owners since the 1980s. There is a lack of detailed information available pertaining to the equipment used, sample techniques, sample sizes, sample preparation and assaying methods used to generate these data sets. Down hole surveying of the drilling where documented has been undertaken using Eastman single shot cameras (in some of the historic drilling) and magnetic multi-shot tools and gyroscopic instrumentation (ARL). The Rothsay data set contains diamond core samples that are selectively collected according to geological boundaries and sample lengths vary between 0.1-1.2m.</p>
Drilling techniques	Drill type (e.g. core, reverse circulation, open-hole hammer, rotary air blast, auger, Bangka, sonic, etc.) and details (e.g. core diameter, triple or standard tube, depth of diamond tails, face-sampling bit or other type, whether core is oriented and if so, by what method, etc.).	<p>Diamond drilling was used to test the Rothsay deposit. DDH holes were cored from surface using either rock roll methods, PQ or HQ. This was changed to NQ2 when ground conditions were competent. The rock roll and PQ portions of the drill hole were not collected or sampled.</p> <p><u>Historical Drilling:</u> Majority of this drilling is DD (194 holes) and RC (189 holes). A number of the historical DD holes have been used to produce multiple mineralised intersections using diamond wedge techniques. Diamond core is not orientated. The age of the RC drilling late 1980s to 2009 suggests that it would be face sampling hammer technique, however this is not documented in the database. Additionally, the database contains 314 percussion holes PER (MRP prefixed) presumed to be open hole hammer type drilled by Metana in the early 1990s and 181 rotary air blast RAB holes (RR, RRAB and RRB prefixed) drilled by Hunter Exploration in the late 1990s.</p>

Drill sample recovery	Method of recording and assessing core and chip sample recoveries and results assessed	Diamond core recoveries were recorded as a percentage of the measured core vs the drilling interval. Core loss locations were recorded on core blocks by the drilling crew. Diamond core was reconstructed into continuous runs where possible and metres checked against the depth as recorded on core blocks by the drilling crew.
	Measures taken to maximise sample recovery and ensure representative nature of the samples.	<p><u>Historical Drilling:</u> Harris, 2002 reports that excellent drilling conditions were encountered throughout the Thundelarra programme of 5 DD holes with 100% core recovery in hanging and foot wall rocks. RQD was calculated from the total length of all core pieces greater than 10cm per core run and expressed as a percentage of the core run length. Hanging wall ultramafic rocks demonstrated an RQD in the range 90-97%, footwall dolerite rocks in the range 60-86%. Drillers measure core recoveries for every drill run completed using three and six metre core barrels. The core recovered is physically measured by tape measure and the length recovered is recorded for every three metre "run". Core recovery can be calculated as a percentage recovery. Almost 100% recoveries were achieved. RC samples were collected to industry standards of the day.</p>
	Whether a relationship exists between sample recovery and grade and whether sample bias may have occurred due to preferential loss/gain of fine/coarse material.	<p>DDH drilling collects uncontaminated fresh core samples which are cleaned at the drill site to remove drilling fluids and cuttings to present clean core for logging and sampling.</p> <p>There is no significant loss of material reported in any of the DDH core.</p> <p><u>Historical Drilling:</u> No assessment has been made of the relationship between recovery and grade. DDH: Except for the top of the hole, while drilling through weathered material (35m maximum), there is no evidence of excessive loss of material and at this stage no information is available regarding possible bias due to sample loss. DDH: There is no significant loss of material reported in any of the pre-2016 DDH core.</p>
Logging	Whether core and chip samples have been geologically and geotechnically logged to a level of detail to support appropriate Mineral Resource estimation, mining studies and metallurgical studies.	<p>Diamond drill core was geologically logged for the total length of the hole using a graphic logging method. All core was photographed and images are stored in the company database. Logging routinely recorded, RQD, weathering, lithology, mineralogy, mineralisation, structure, alteration and veining. Logs were coded using the company geological coding legend and entered into the company database.</p> <p><u>Historical Drilling:</u> All chips and drill core were geologically logged by company or contracted geologists, using their current company logging scheme. The majority of holes (80%+) within the mineralised intervals have lithology information which has provided sufficient detail to enable reliable interpretation of wireframe. The logging is qualitative in nature, describing oxidation state, grain size, an assignment of lithology code and stratigraphy code by geological interval. The 2012 Auricup diamond drill holes were geologically logged in their entirety and photographed. Diamond drilling was logged for geotechnical purposes. Logging was at an appropriate detailed quantitative standard to support future geological, resource, reserve estimations and technical/economic studies. All drill core and chip trays are stored at the companies Perenjori yard.</p>

	<p>Whether logging is qualitative or quantitative in nature. Core (or costean, channel, etc.) photography.</p>	<p>All core was photographed in the cores trays, with individual photographs taken of each tray both dry, and wet, and photos uploaded to the EganStreet Server.</p> <p><u>Historical Drilling:</u> RC: Logging of RC chips records lithology, mineralogy, mineralisation, weathering, colour and other features of the samples. All samples are wet-sieved and stored in a chip tray. DDH: Logging of DDH core records lithology, mineralogy, mineralisation, weathering, colour and other features of the samples, and structural information from oriented drill core. Older pre-2016 core has been variously photographed and are copied onto the EganStreet server for reference.</p>
	<p>The total length and percentage of the relevant intersections logged</p>	<p>All DDH holes were logged in full.</p>
<p>Sub-sampling techniques and sample preparation</p>	<p>If core, whether cut or sawn and whether quarter, half or all core taken.</p>	<p>Recent core samples were cut in half using an Almonte diamond saw. Half core samples were collected for assay, and the remaining half core samples stored in the core trays. Some HQ samples were quarter cored. Very little, readily available documentation of the sampling procedures for historic drilling are available. Where reports have been reviewed (Turley, 2001 and Harris, 2002) it appears that NQ quarter core has been sawn for sampling.</p>
	<p>If non-core, whether riffled, tube sampled, rotary split, etc. and whether sampled wet or dry.</p>	<p>Diamond holes only were drilled, however where the rock roll or PQ was used for pre-collars these were discarded and not sampled.</p> <p><u>Historical Drilling:</u> No documentation of the sampling of RC chips is available for the Metana or Hunter Exploration drilling. 2012 RC drilling collected 1 metre RC drill samples that were channelled through a rotary cone-splitter, installed directly below a rig mounted cyclone, and an average 2-3 kg sample is collected in pre-numbered calico bags, and positioned on top of the plastic bag. All samples were dry.</p>
	<p>For all sample types, the nature, quality and appropriateness of the sample preparation technique.</p>	<p>Samples were prepared at the MinAnalytical Laboratory in Perth. Samples were dried, and the whole sample pulverised to 80% passing 75um, and a sub-sample of approx. 200 g retained. A nominal 50 g was used for the gold analysis. The procedure is industry standard for this type of sample.</p> <p><u>Historical Drilling:</u> Unable to comment with any certainty on the quality control procedures for sub-sampling for the pre-2012 drilling. The 2012 Auricup samples were prepared at the Genalysis Laboratory in Perth. Samples were dried, and the whole sample pulverised to 80% passing 75um, and a sub-sample of approx. 200 g retained. A nominal 50 g was used for the gold analysis.</p>
	<p>Quality control procedures adopted for all sub-sampling stages to maximise representation of samples.</p>	<p>Diamond core was sawn with a diamond saw and half core samples taken for assay. At the laboratory, regular Repeats and Lab Check samples are assayed. Unable to comment with any certainty on the quality control procedures for sub-sampling for the pre-2016 drilling.</p>
	<p>Measures taken to ensure that the sampling is representative of the in situ material collected, including for instance results for field duplicate/second-half sampling.</p>	<p>The sampling techniques for collection of the sample to be submitted to the assay facility for diamond drilling are of a consistent quality and are appropriate. During drilling and sampling operations, EganStreet had on site, technically competent supervision and procedures in place to ensure sample preparation integrity and quality. No field duplicates were taken for diamond drilled samples.</p>

	<p>Whether sample sizes are appropriate to the grain size of the material being sampled.</p>	<p>The sample sizes are considered appropriate for the diamond core sampling.</p> <p>Are unable to comment on the appropriateness of sample sizes to grain size on pre-2012 data as no petrographic studies have been undertaken. Sample sizes are considered appropriate to give an indication of mineralisation given the particle size and the preference to keep the sample weight below a targeted 3kg mass which is the optimal weight to ensure requisite grind size in the LM5 sample mills used by the relevant Laboratories in sample preparation</p>
	<p>The nature, quality and appropriateness of the assaying and laboratory procedures used and whether the technique is considered partial or total.</p>	<p>Samples were analysed at the MinAnalytical Laboratory in Perth. The analytical method used was a 50 g Fire Assay for gold only and a Four Acid Digest Multi Element (34 element) assay on all Woodley and Woodley East shear samples. This is considered to be appropriate for the material and mineralization</p> <ul style="list-style-type: none"> A review of the QAQC data from the most recent ARL(Auricup) drilling programmes for the 2013 mineral resource update was conducted by Mining Plus Pty Ltd as documented in Sulaiman 2013. This involved assessment of internal standards and of external standards, blanks, laboratory replicates and check samples.
<p>Quality of assay data and laboratory tests</p>	<p>For geophysical tools, spectrometers, handheld XRF instruments, etc., the parameters used in determining the analysis including instrument make and model, reading times, calibrations factors applied and their derivation, etc.</p>	<p>N/A</p>
	<p>Nature of quality control procedures adopted (e.g. standards, blanks, duplicates, external laboratory checks) and whether acceptable levels of accuracy (i.e. lack of bias) and precision have been established.</p>	<p>Data quality for EganStreet diamond drill holes are good and conform to normal industry practices. Protocol for DDH programmes is for Field Standards (Certified Reference Materials) and Blanks inserted at a rate of 5 Standards or Blanks per 100 samples.</p> <p>Results of the Field and Lab QAQC are checked on assay receipt using QAQCR software. All assays passed QAQC protocols, showing no levels of contamination or sample bias.</p> <ul style="list-style-type: none"> The recent ARL and EganStreet data integrity is accepted with a high level of confidence, however the historical drilling data could not be validated as there is insufficient or non-existent QAQC data.
<p>Verification of sampling and assaying</p>	<p>The verification of significant intersections by either independent or alternative company personnel.</p> <p>The use of twinned holes.</p> <p>Documentation of primary data, data entry procedures, data verification, data storage (physical and electronic) protocols.</p> <p>Discuss any adjustment to assay data.</p>	<p>Significant results were checked by the Egan Street Geology Manager and Executive Directors</p> <p>Twin holes were not employed during this part of the programme.</p> <p>All field logging is carried out on Toughbooks using excel templates. Logging data is submitted electronically to a Database Geologist in the Perth office. Assay files are received electronically from the Laboratory. All data is now stored in a Datashed database system and maintained by Maxwell Geoscience.</p> <p>Pre-2012 Data management and verification protocols are undocumented</p> <p>No assay data was adjusted. The lab's primary Au field is the one used for plotting and resource purposes. No averaging is employed.</p>

Location of data points	Accuracy and quality of surveys used to locate drill holes (collar and down-hole surveys), trenches, mine workings and other locations used in Mineral Resource estimation.	For set-up, the rig is aligned by surveyed marker pegs and compass check, and the drill rig mast is set up using a clinometer. Drillers use an electronic single-shot camera to take dip and azimuth readings inside the stainless-steel rods, at 30m intervals and a 5- 10m interval Gyro survey is conducted once the hole is drilled to depth. Drill hole collar locations were picked up by a qualified surveyor using DGPS (differential).
		<u>Historical Drilling:</u> A total of 50 historical and SLR drill hole collars were resurveyed and locations have been verified by ARL for the 2013 MRE by Sulaiman. The post 2010 drill hole collar locations were picked up by a qualified surveyor using DGPS (differential).
	Specification of the grid system used.	Grid projection is GDA94, Zone 50.
	Quality and adequacy of topographic control.	Detailed surface control has been established by photogrammetry
Data spacing and distribution	Data spacing for reporting of Exploration Results.	Primary: approximately 25m - 50 m on section by 25m - 50 m along strike.
	Whether the data spacing, and distribution is sufficient to establish the degree of geological and grade continuity appropriate for the Mineral Resource and Ore Reserve estimation procedure(s) and classifications applied.	Drill spacing is approximately 25m (along strike) by 20m (on section) at shallow depths and from 50m by 50m to 100m x 100m at depth. This is considered adequate to establish both geological and grade continuity. Existing mine extents provide increased confidence in the geological continuity of the main mineralised structures.
Orientation of data in relation to geological structure	Whether the orientation of sampling achieves unbiased sampling of possible structures and the extent to which this is known, considering the deposit type.	The orientation of the drill holes is approximately perpendicular to the strike and dip of the targeted mineralisation and observed shearing.
	If the relationship between the drilling orientation and the orientation of key mineralised structures is considered to have introduced a sampling bias, this should be assessed and reported if material.	The orientation of the drill holes is approximately perpendicular to the strike and dip of the targeted mineralisation and contacts. No significant sampling bias has been introduced.
Sample security	The measures taken to ensure sample security.	DDH drilling pre-numbered calico sample bags were collected in polywoven bags (four to five calico bags per single polywoven bag), sealed, and transported by company transport or Mining Services to the MinAnalytical Laboratory in Perth.
Audits or reviews	The results of any audits or reviews of sampling techniques and data.	Sampling and assaying techniques are industry-standard. No specific audits or reviews have been undertaken at this stage in the programme.

SECTION 2 REPORTING OF EXPLORATION RESULTS

(Criteria listed in the preceding section also apply to this section.)

CRITERIA	JORC CODE EXPLANATION	COMMENTARY																																																						
Mineral tenement and land tenure status	Type, reference name/number, location and ownership including agreements or material issues with third parties such as joint ventures, partnerships, overriding royalties, native title interests, historical sites, wilderness or national park and environmental settings.	<p>The drilling occurred within tenements M59/39 and M59/40, which are fully owned by Auricup (Rothsay) Pty Ltd which is a 100% owned subsidiary of Egan Street Resources Ltd. The Rothsay Townsite is located within the Mining tenements.</p> <table border="1"> <thead> <tr> <th>Tenement ID</th> <th>Area km²</th> <th>Status</th> <th>Holder</th> <th>Grant Date</th> <th>Expiry Date</th> </tr> </thead> <tbody> <tr> <td>M59/39</td> <td>7.10</td> <td>Live</td> <td>Auricup (Rothsay) Pty Ltd</td> <td>4/12/1986</td> <td>3/12/2028</td> </tr> <tr> <td>M59/40</td> <td>3.81</td> <td>Live</td> <td>Auricup (Rothsay) Pty Ltd</td> <td>4/12/1986</td> <td>3/12/2028</td> </tr> <tr> <td>E59/2183</td> <td>40.75</td> <td>Live</td> <td>Auricup (Rothsay) Pty Ltd</td> <td>24/02/2017</td> <td>23/02/2022</td> </tr> <tr> <td>L59/24</td> <td>0.068</td> <td>Live</td> <td>Auricup (Rothsay) Pty Ltd</td> <td>22/08/1989</td> <td>21/08/2019</td> </tr> <tr> <td>E59/1234</td> <td>1.64</td> <td>Live</td> <td>Auricup (Rothsay) Pty Ltd</td> <td>29/01/2007</td> <td>28/01/2018</td> </tr> <tr> <td>E59/1262</td> <td>2.99</td> <td>Live</td> <td>Auricup (Rothsay) Pty Ltd</td> <td>10/08/2007</td> <td>9/08/2017</td> </tr> <tr> <td>E59/1263</td> <td>2.99</td> <td>Live</td> <td>Auricup (Rothsay) Pty Ltd</td> <td>10/08/2007</td> <td>9/08/2017</td> </tr> <tr> <td>E59/2254</td> <td>2.99</td> <td>Live</td> <td>Auricup (Rothsay) Pty Ltd</td> <td>27/12/2017</td> <td>26/12/2022</td> </tr> </tbody> </table>	Tenement ID	Area km ²	Status	Holder	Grant Date	Expiry Date	M59/39	7.10	Live	Auricup (Rothsay) Pty Ltd	4/12/1986	3/12/2028	M59/40	3.81	Live	Auricup (Rothsay) Pty Ltd	4/12/1986	3/12/2028	E59/2183	40.75	Live	Auricup (Rothsay) Pty Ltd	24/02/2017	23/02/2022	L59/24	0.068	Live	Auricup (Rothsay) Pty Ltd	22/08/1989	21/08/2019	E59/1234	1.64	Live	Auricup (Rothsay) Pty Ltd	29/01/2007	28/01/2018	E59/1262	2.99	Live	Auricup (Rothsay) Pty Ltd	10/08/2007	9/08/2017	E59/1263	2.99	Live	Auricup (Rothsay) Pty Ltd	10/08/2007	9/08/2017	E59/2254	2.99	Live	Auricup (Rothsay) Pty Ltd	27/12/2017	26/12/2022
	Tenement ID	Area km ²	Status	Holder	Grant Date	Expiry Date																																																		
M59/39	7.10	Live	Auricup (Rothsay) Pty Ltd	4/12/1986	3/12/2028																																																			
M59/40	3.81	Live	Auricup (Rothsay) Pty Ltd	4/12/1986	3/12/2028																																																			
E59/2183	40.75	Live	Auricup (Rothsay) Pty Ltd	24/02/2017	23/02/2022																																																			
L59/24	0.068	Live	Auricup (Rothsay) Pty Ltd	22/08/1989	21/08/2019																																																			
E59/1234	1.64	Live	Auricup (Rothsay) Pty Ltd	29/01/2007	28/01/2018																																																			
E59/1262	2.99	Live	Auricup (Rothsay) Pty Ltd	10/08/2007	9/08/2017																																																			
E59/1263	2.99	Live	Auricup (Rothsay) Pty Ltd	10/08/2007	9/08/2017																																																			
E59/2254	2.99	Live	Auricup (Rothsay) Pty Ltd	27/12/2017	26/12/2022																																																			
	The security of the tenure held at the time of reporting along with any known impediments to obtaining a license to operate in the area.	The tenements are in good standing with the Western Australian Department of Mines and Petroleum.																																																						
Exploration done by other parties	Acknowledgment and appraisal of exploration by other parties.	<p>Numerous companies have previously explored the area. Gold was discovered by George Woodley in 1894 and a number of parties have explored and mined the area since then. In more recent times, Metana Minerals NL in joint venture with GENMIN mined and conducted drilling activities the area from January 1989 until 1991. Hunter Exploration entered into a joint venture with Central West Gold in 1997 and completed a detailed geological mapping programme, rock chip sampling, lag sampling, RC and RAB drilling. The drilling successfully extended the strike length of the mineralisation along the A Shear (renamed Woodley's Shear in 2017) by 250m to the south of the previously identified significant gold mineralisation (Tanner, 1997).</p> <p>In March 2000, Thundelarra entered into a joint venture agreement with the tenement holders, Central West Gold. In 2001-2002, Thundelarra and its joint venture partners Menzies Gold Ltd drilled 9 RC and 4 Diamond tails. In 2002-2003 United Gold (which subsequently became Royal Resources) acquired Thundelarra's 70% equity in the Project and completed further exploration activities and a mineral resource on the tenements.</p> <p>In November 2007 Silver Lake Resources listed on the Australian Stock Exchange and became the 100% owner of the Rothsay Gold Project. Silver Lake conducted an airborne EM programme targeting base metal sulphides. During 2008-2009 Silver Lake Resources completed site reconnaissance which included the re-establishment of the local grid, 4 Diamond holes and completion of an aerial topographical survey over the Project area. Auricup Resources Limited drilled nine diamond core holes (RYDD001 to RYDD009) during March 2012 targeting the A Shear (renamed Woodley's Shear) approximately 50 to 100m down dip and along strike from the existing mine workings. The most recent exploration undertaken by Auricup has included limited rock chip samples from the low-grade stockpiles and from the upper levels of the underground mine and a review of more recent Airborne survey data collected by the Geological Survey of Western Australia ("GSWA"). In addition, work was completed compiling and digitising historical mine and exploration records.</p>																																																						

Deposit type, geological setting and style of mineralisation.

The Rothsay Gold Project is located 300 km N-NE of Perth and 70 km East of the wheat belt town of Perenjori. Gold was discovered at the Rothsay Gold Project in 1894 and has been partially exploited by shallow open-pits and underground mining techniques returning consistently high-grade ore (+10g/t Au). Historic gold production totals an estimated 50,000oz and the project was last mined by Metana Minerals NL who ceased production in May 1991 after the gold price fell below US\$360/oz. Extensive underground development infrastructure from historical workings is in reasonable condition. The Rothsay Gold Mine is located within the Warriedar Greenstone gold belt, an Archaean sequence of mafic, ultra-mafic, meta-volcanic and sedimentary rocks folded in an anticlinal structure which plunges and strikes to the north-northwest with steeply dipping limbs. The western limb contains smaller scale anticlinal and synclinal folds and hosts the Rothsay and Mt Mulgine mineralisation. Fields Find occurs on the eastern limb of the structure, which is truncated by a major post-tectonic granitoid intrusion to the south. The truncated southern portion of the sequence forms the Ningham-Retaliation fold belt in the extreme south.

Geology

The deposit is hosted in three discrete areas and within five individual shear zones. Woodley's Shear (formerly A Shear) and Woodley's East and associated HW shears (formerly H Shear) occur in to the east. Orient Shear (formerly B Shear) and Clyde and Clyde East Shears (formerly C and D Shears) occur in a second area further west and Miners Shear (formerly E Shear) occurs as an isolated shear in the north west. The Woodley Shear is located at the contact between serpentinitised peridotite and a porphyritic pyroxenite. The serpentinite forms the hanging wall unit. A sequence of mafic volcanic and sub-volcanic sills forms the hanging wall to the serpentinite. The Woodley's Shear is characterised by several generations of quartz veining with adjacent random tremolite alteration. The early quartz phase is typically blue-black due to the partial replacement of alumina by chromium oxide. The shear zone is typically two to five metres thick and mineralisation does not typically occur outside the shear zone. The main gold mineralisation is associated with shear-hosted quartz veins of blue and white quartz of up to 3m thickness. The footwall poMD is relatively unaltered, while the hanging wall is strongly foliated and was subjected to intense tremolite alteration (SERP). Aeromagnetic surveys and geological mapping suggest that the ultramafic host rocks are truncated by granite that is mostly covered by lateritic duricrust.

A summary of all information material to the understanding of the exploration results including a tabulation of the following information for all Material drill holes:

Refer to Tables in the body of text.

Drill hole Information

- easting and northing of the drill hole collar
- elevation or RL (Reduced Level – elevation above sea level in metres) of the drill hole collar
- dip and azimuth of the hole
- down hole length and interception depth
- hole length
- If the exclusion of this information is justified on the basis that the information is not Material and this exclusion does not detract from the understanding of the report, the Competent Person should clearly explain why this is the case.

<p>Data aggregation methods</p>	<p>In reporting Exploration Results, weighting averaging techniques, maximum and/or minimum grade truncations (e.g. cutting of high grades) and cut-off grades are usually Material and should be stated.</p>	<p>Grades are reported as down-hole length-weighted averages of grades selected using geological and grade continuity criteria. Considerations included continuity of thickness, dip and strike, association with lithology and geological logging (weathering, lithology, structure, alteration, sulphides, veining), internal dilution (~1 to 2 m) and an approximated 0.5 to 1.0 g/t Au cut-off. No top cuts have been applied to the reporting of the assay results</p>
	<p>Where aggregate intercepts incorporate short lengths of high grade results and longer lengths of low grade results, the procedure used for such aggregation should be stated and some typical examples of such aggregations should be shown in detail.</p>	<p>Higher grade intervals are included in the reported grade intervals, individual assays > 5.0 g/t Au have been reported for each intersection.</p>
<p>Relationship between mineralisation widths and intercept lengths</p>	<p>These relationships are particularly important in the reporting of Exploration Results. If the geometry of the mineralisation with respect to the drill hole angle is known, its nature should be reported. If it is not known and only the down hole lengths are reported, there should be a clear statement to this effect (e.g. 'down hole length, true width not known').</p>	<p>Mineralised shear zones are north-northwest striking and steep to moderate east dipping. The general drill direction of -60degrees to 270 (local Grid) is approximately perpendicular to the shear zones and a suitable drilling direction to avoid directional biases. As a result, reported intersections approximate, but are not, true width.</p>
<p>Diagrams</p>	<p>Appropriate maps and sections (with scales) and tabulations of intercepts should be included for any significant discovery being reported. These should include, but not be limited to a plan view of drill hole collar locations and appropriate sectional views.</p>	<p>Refer to Figures in the body of text for relevant plans</p>
<p>Balanced reporting</p>	<p>Where comprehensive reporting of all Exploration Results is not practicable, representative reporting of both low and high grades and/or widths should be practiced to avoid misleading reporting of Exploration Results.</p>	<p>All intersections reporting to the geological interpretation of the Woodley and Woodley East Shears have been reported.</p>
<p>Other substantive exploration data</p>	<p>Other exploration data, if meaningful and material, should be reported including (but not limited to): geological observations; geophysical survey results; geochemical survey results; bulk samples – size and method of treatment; metallurgical test results; bulk density, groundwater, geotechnical and rock characteristics; potential deleterious or contaminating substances.</p>	<p>Drill hole location data are plotted on the Figures in the body of text.</p>

Further work	<p>The nature and scale of planned further work (e.g. tests for lateral extensions or depth extensions or large-scale step-out drilling). Diagrams clearly highlighting the areas of possible extensions, including the main geological interpretations and future drilling areas, provided this information is not commercially sensitive.</p>	<p>Further RC and diamond drilling is planned to infill and test strike extents to the north and south of the prospect. Geological interpretation and modelling is ongoing and work on an updated resource for the Rothsay prospect</p>
--------------	---	---

APPENDIX 4 FORWARD LOOKING STATEMENTS & DISCLAIMERS

This announcement includes forward-looking statements that are only predictions and are subject to risks, uncertainties and assumptions, which are outside the control of EganStreet.

Actual values, results, interpretations or events may be materially different to those expressed or implied in this announcement. Given these uncertainties, recipients are cautioned not to place reliance on forward-looking statements in the announcement as they speak only at the date of issue of this announcement. Subject to any continuing obligations under applicable law and ASX Listing Rules, EganStreet does not undertake any obligation to update or revise any information or any of the forward-looking statements in this announcement or any changes in events, conditions or circumstances on which any such forward-looking statement is based.

This announcement has been prepared by EganStreet. The document contains background information about EganStreet current at the date of this announcement. The announcement is in summary form and does not purport to be all-inclusive or complete.

Recipients should conduct their own investigations and perform their own analysis in order to satisfy themselves as to the accuracy and completeness of the information, statements and opinions contained in this announcement.

The announcement is for information purposes only. Neither this announcement nor the information contained in it constitutes an offer, invitation, solicitation or recommendation in relation to the purchase or sale of shares in any jurisdiction. The announcement may not be distributed in any jurisdiction except in accordance with the legal requirements applicable in such jurisdiction. Recipients should inform themselves of the restrictions that apply to their own jurisdiction as a failure to do so may result in a violation of securities laws in such jurisdiction.

This announcement does not constitute investment advice and has been prepared without considering the recipient's investment objectives, financial circumstances or particular needs and the opinions and recommendations in this announcement are not intended to represent recommendations of particular investments to particular persons.

Recipients should seek professional advice when deciding if an investment is appropriate. All securities transactions involve risks, which include (among others) the risk of adverse or unanticipated market, financial or political developments. To the fullest extent of the law, EganStreet, its officers, employees, agents and advisers do not make any representation or warranty, express or implied, as to the currency, accuracy, reliability or completeness of any information, statements, opinion, estimates, forecasts or other representations contained in this announcement. No responsibility for any errors or omissions from the announcement arising out of negligence or otherwise is accepted.