



METEORIC RESOURCES

Canadian Cobalt & Polymetallic Explorer

ASX:MEI





Disclaimer

The material in this presentation has been prepared by Meteoric Resources and is general background information about Meteoric's activities current as at the date of this presentation. This information is given in summary form and does not purport to be complete. Information in this presentation, including forecast financial information, should not be considered as advice or a recommendation to investors or potential investors in relation to holding, purchasing or selling securities or other financial products or instruments and does not take into account your particular investment objectives, financial situation or needs.

Before acting on any information you should consider the appropriateness of the information having regard to these matters, any relevant offer document and in particular, you should seek independent financial advice. All securities and financial product or instrument transactions involve risks, which include (among others) the risk of adverse or unanticipated market, financial or political developments and, in international transactions, currency risk.

This presentation may contain forward looking statements including statements regarding our intent, belief or current expectations with respect to Meteoric's businesses and operations, market conditions, results of operation and financial condition, capital adequacy, specific provisions and risk management practices. Readers are cautioned not to place undue reliance on these forward looking statements. Meteoric does not undertake any obligation to publicly release the result of any revisions to these forward looking statements to reflect events or circumstances after the date hereof to reflect the occurrence of unanticipated events. While due care has been used in the preparation of forecast information, actual results may vary in a materially positive or negative manner. Forecasts and hypothetical examples are subject to uncertainty and contingencies outside Meteoric's control. Past performance is not a reliable indication of future performance.

Competent Person Statement

The information in this presentation that relates to exploration results is based on information compiled and fairly represented by Mr Tony Cormack who is a Member of the Australian Institute of Geoscientists and a consultant to Meteoric Resources Limited. Mr Cormack, has sufficient experience relevant to the style of mineralisation and type of deposit under consideration, and to the activity which he has undertaken, to qualify as a Competent Person as defined in the 2012 Edition of the Joint Ore Reserves Committee (JORC) Australasian Code for Reporting of Exploration Results, Mineral Resources and Ore Reserves. Mr Cormack consents to the inclusion in this report of the matters based on this information in the form and context in which it appears.

Corporate Snapshot



Andrew Tunks– Managing Director

Dr Tunks is a member of the Australian Institute of Geoscientist holding a B.Sc. (Hons.) from Monash and a Ph.D from the University of Tasmania. Dr Tunks has held numerous senior executive positions in a range of small to large resource companies including Auroch Minerals, A-Cap Resources, IMAGOLD Corporation and Abosso Goldfields.

Patrick Burke– Non-Executive chairman

Mr Burke holds a Bachelor of Law from the University of Western Australia. He has extensive legal and corporate advisory experience and over the last 12 years has acted as a Director for a large number of ASX, NASDAQ and AIM listed companies.

Shastri Ramnath – Technical Director

Throughout her 20 years in the exploration and mining industry, Shastri has gained extensive international experience, working on projects in Canada, the United States (Nevada), South America (Chile, Ecuador & Peru) and Africa (Guinea, Burkina Faso, Zambia, Namibia & South Africa). Shastri's experience includes working with Falconbridge Limited in Winnipeg - Manitoba, FNX Mining (now KGHM International) in Sudbury - Ontario, and as the President and Managing Director of Bridgeport Ventures (TSX listed junior exploration company).

Tony Cormack– Cobalt Expert

Tony is a geologist with over 20 years of mine and exploration geology experience across a broad range of commodities including nickel, copper, cobalt, gold, tantalum, graphite and iron. He has a proven track record of taking exploration projects through to production and has held senior positions with BHP Billiton, Aztec Resources, Atlas Iron Limited and Hexagon Resources Limited.

Tony's most recent role was as COO of Battery Mineral Resources Limited ("BMR") where he managed the cobalt exploration adjacent to Meteoric's exciting tenure in Ontario, Canada.

Share Price



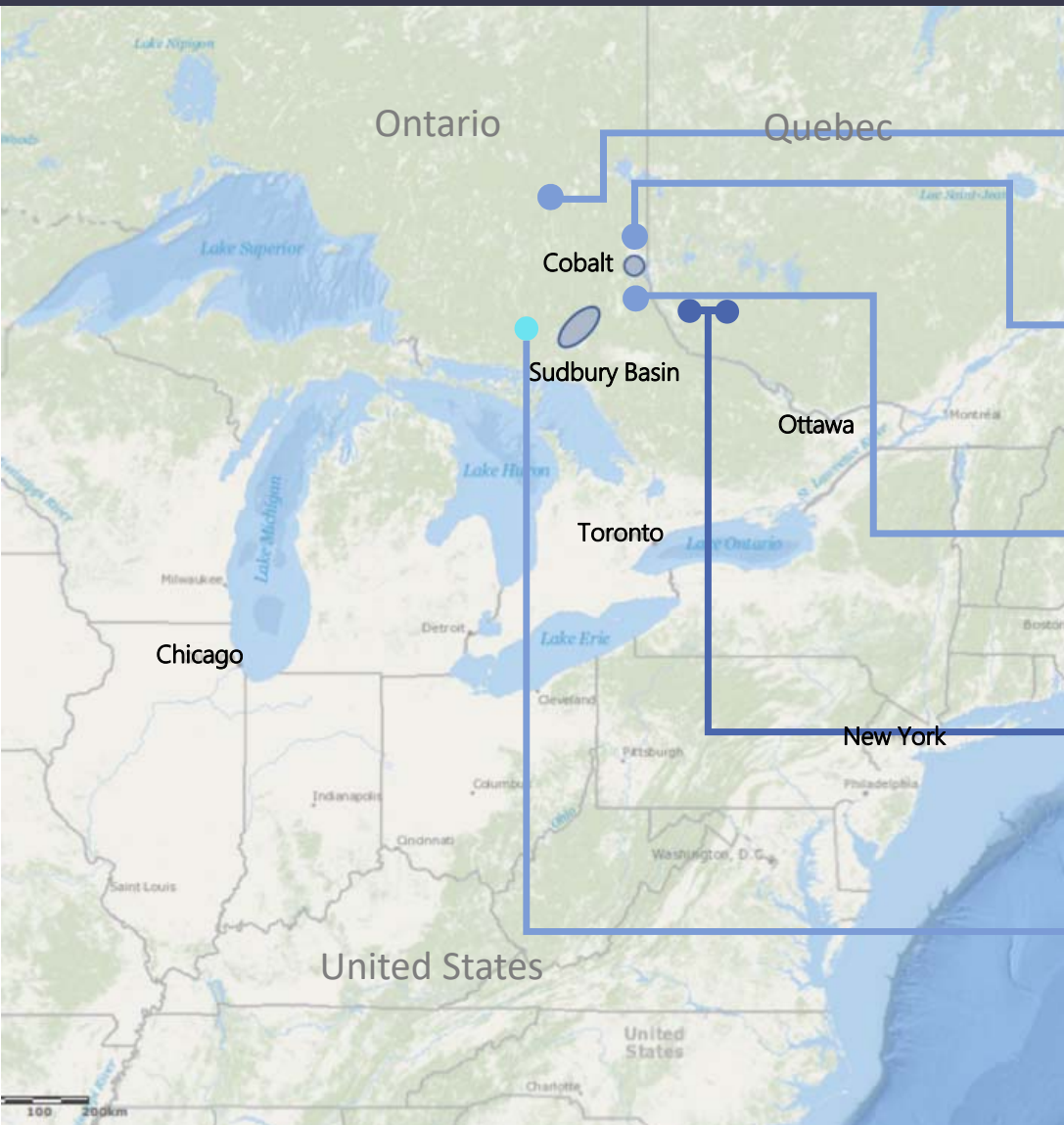
Capital Structure

Market Cap at 3.7c (28/03/2018)	\$21.04 M
Shares on Issue (15/03/2018)	568,705,761
Options on Issue (15/03/2018)	50,500,500
Current Cash (31/12/2017)	\$4.9M

Significant Shareholders

Tolga Kumova	6.75%
--------------	-------

Project Locations



BURT

Primary Cobalt Targets



MULLIGAN & MULLIGAN EAST

High-grade Cobalt and Silver Targets



GILLIES LIMIT

Primary Cobalt Targets



MIDRIM / LA FORCE

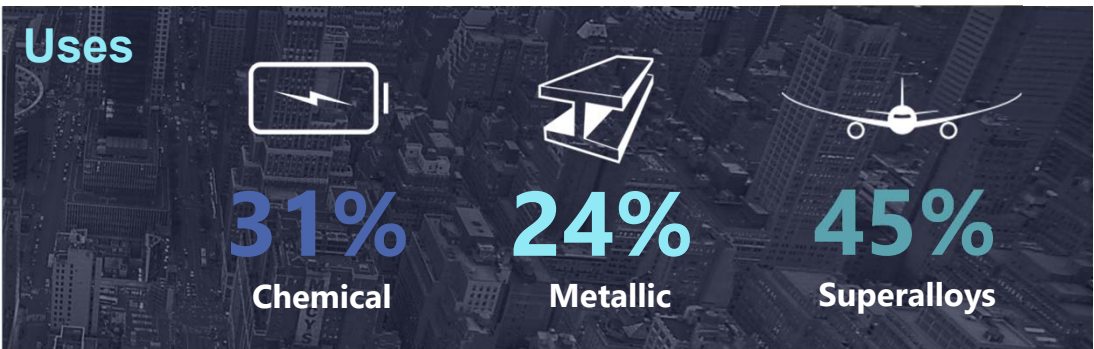
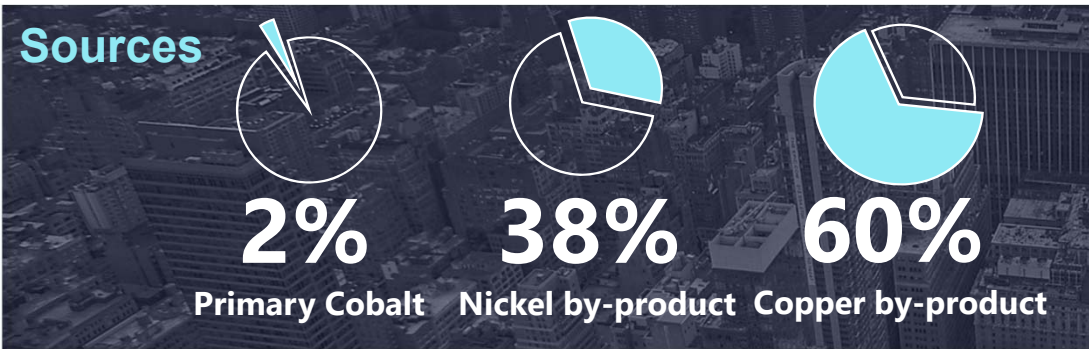
Polymetallic: Cu-Ni-Co-PGM



IRON MASK

Primary Cobalt Targets

Addressing the Cobalt Market



Supply



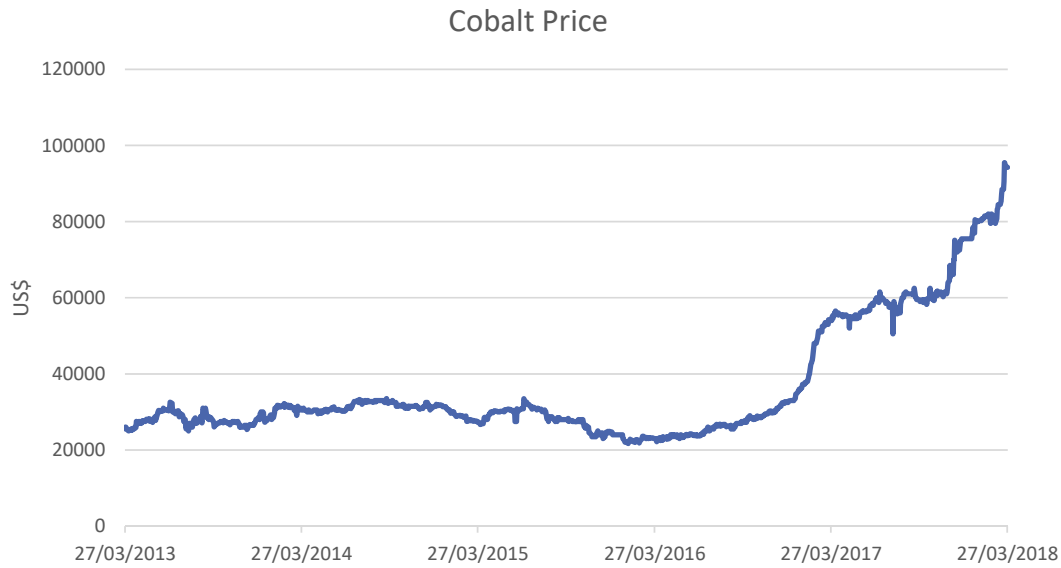
Long-term under-investment due to limited development of primary mines.



Closure of 2015 Glencore Cu-Co mine in Katanga has resulted in an imminent supply crunch.



3% Compounded annual growth rate to 2020 Cobalt prices have little influence on primary producers' decision making.



Project Overview



Cobalt

MULLIGAN Ontario, Canada

- 8-tonne bulk sample av. grade of 10% Co
- Grab samples assay up to **12.6% Co, 39.7 g/t Ag, 1.03% Ni and 29.8 g/t Au¹**
- 8 parallel polymetallic veins

BURT Ontario, Canada

- Located near Battery Minerals' Island 27 project which intersected 4m @ 4.18% Co, 12.1 g/t Ag, 0.38% Ni and 0.098 g/t Au²

GILLIES LIMIT Ontario, Canada

- Along strike of numerous historical cobalt and silver mines
- Sampling grades up to 1.6% Co³

IRON MASK Ontario, Canada

- 500m from "Iron Mask Shaft" (**historical production: av. 15% Co, 255g/t Ag**)¹

Polymetallic

MIDRIM AND LA FORCE Quebec, Canada

- 46,000m core; only partially assayed
- AUD\$20M+ of historical exploration data
- Significant recent drill results (Midrim):⁴
 - **19.69m at 2.99% Cu, 1.85% Ni, 3.22 g/t PGE/Au** from 15.50m in MR00-01
 - **37.93m at 2.07% Cu, 1.98% Ni, 2.79 g/t PGE/Au** from 28.22m in MR00-05
(Including **10.25m at 2.88% Cu, 3.52% Ni, 4.18 g/t PGE/Au** from 40.65m)
- Up to 95% Cu and 80% Ni recoveries after 10 minutes flotation

¹ASX:MEI 26/05/2017

²ASX:MEI 24/01/2018

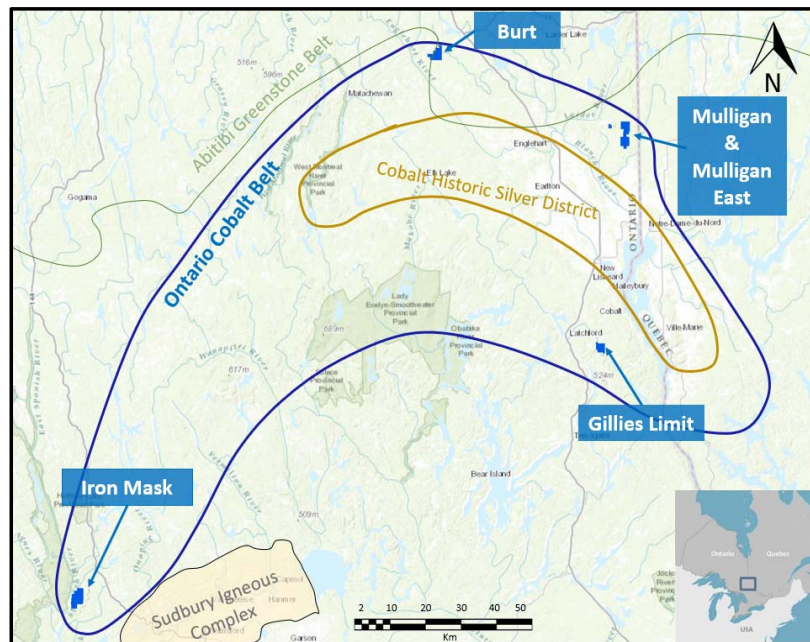
³ASX:MEI 27/03/2018

⁴ASX:MEI 19/02/2018



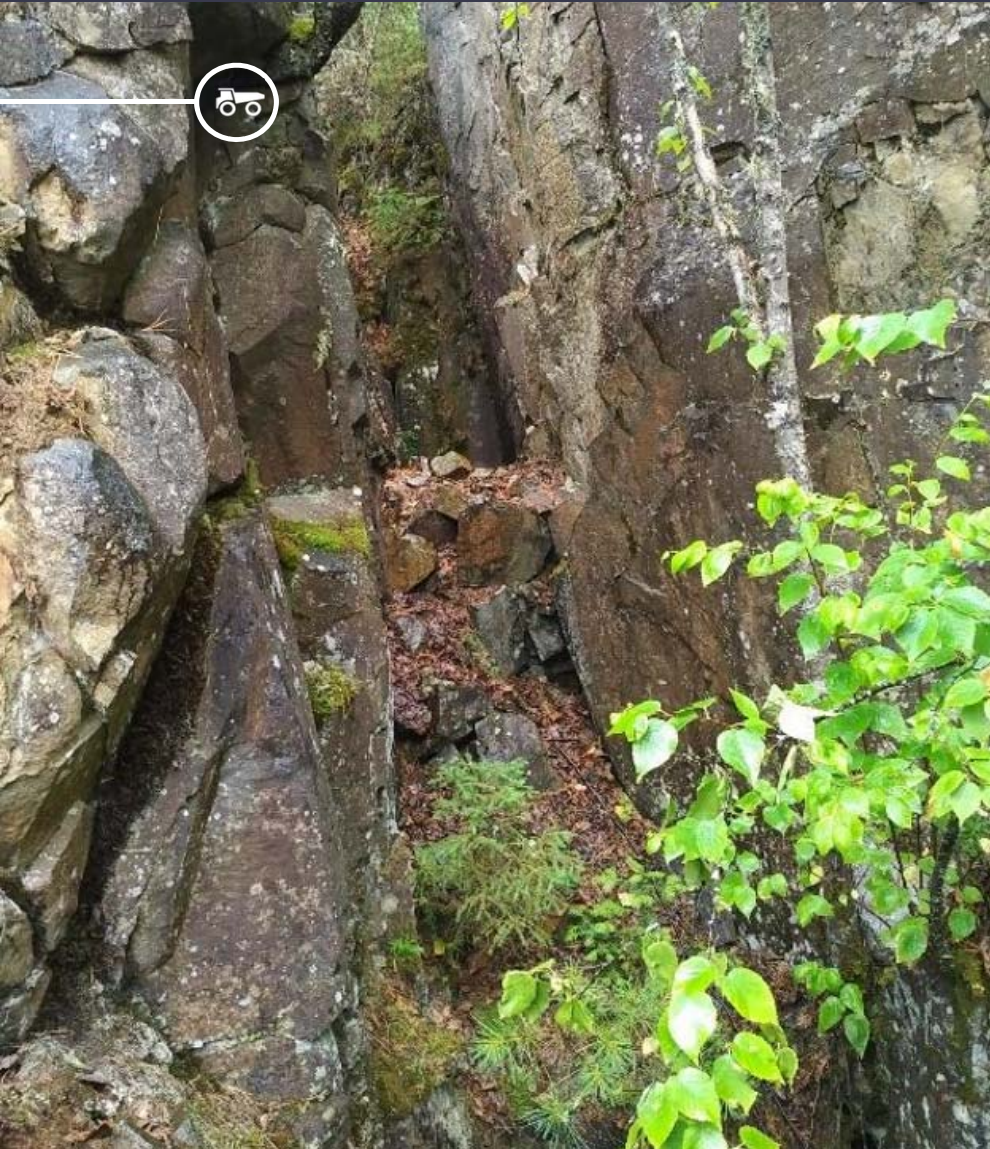
Cobalt Projects

PORTFOLIO OF HIGH GRADE PROSPECTS - ONTARIO



OVERVIEW

- 5 cobalt projects (100%); Cobalt Town region and Sudbury Basin
- Regional production >600 Moz Ag and 45Mlb Co
- High grade historical production and bulk sampling from claims
- MEI engaged leading Canadian geology firm (Orix Geoscience)
- Drilling to commence Q3 2018 at Mulligan

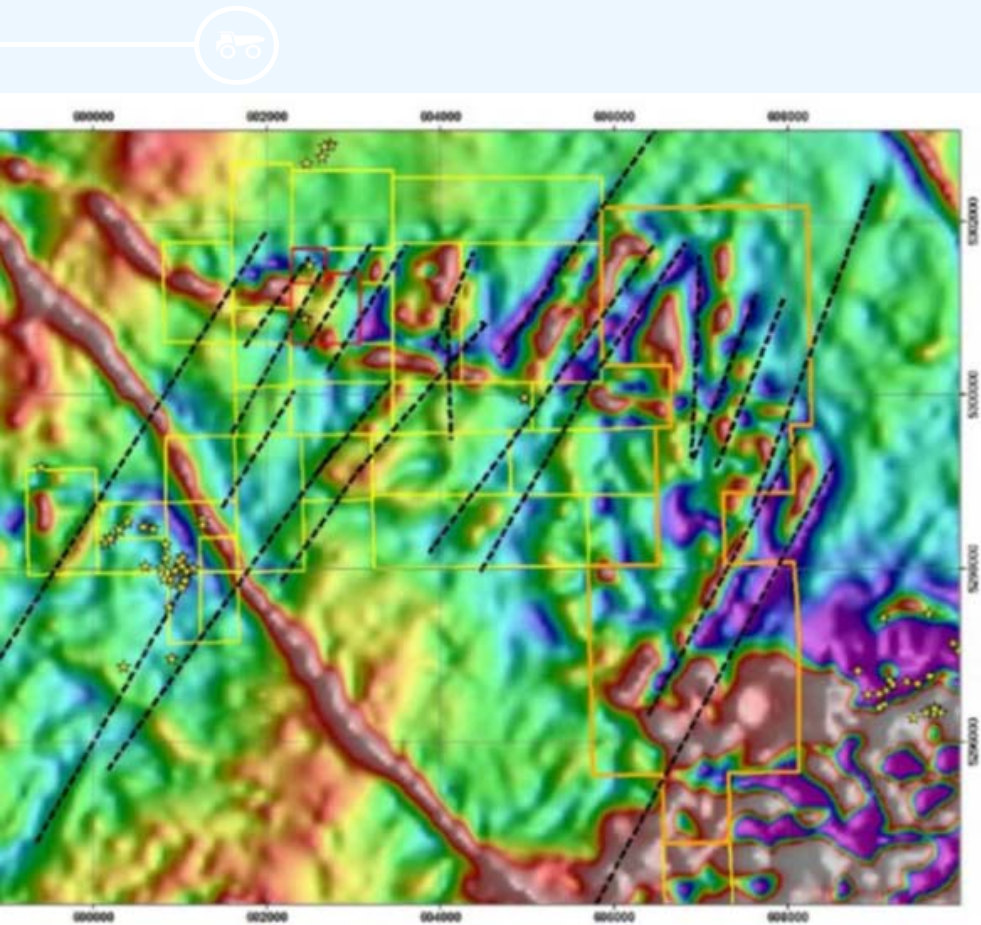


Mulligan

Ontario

- 50km North of prolific Ag-Co mining camp of Cobalt
- Historic production averaging 10% Co
- Production run sampled grades of up to 19% Co and 56.7 g/t Au
- Canadian Department of Mines Sample (23720)
12.6% Co, 29.75 g/t Au, 39.7 g/t Ag and 1.03% Ni
- Sulphides visible in 200m x 200m Diabase outcrop from which historical production occurred
- The Project captures 8 parallel cobalt-rich polymetallic veins

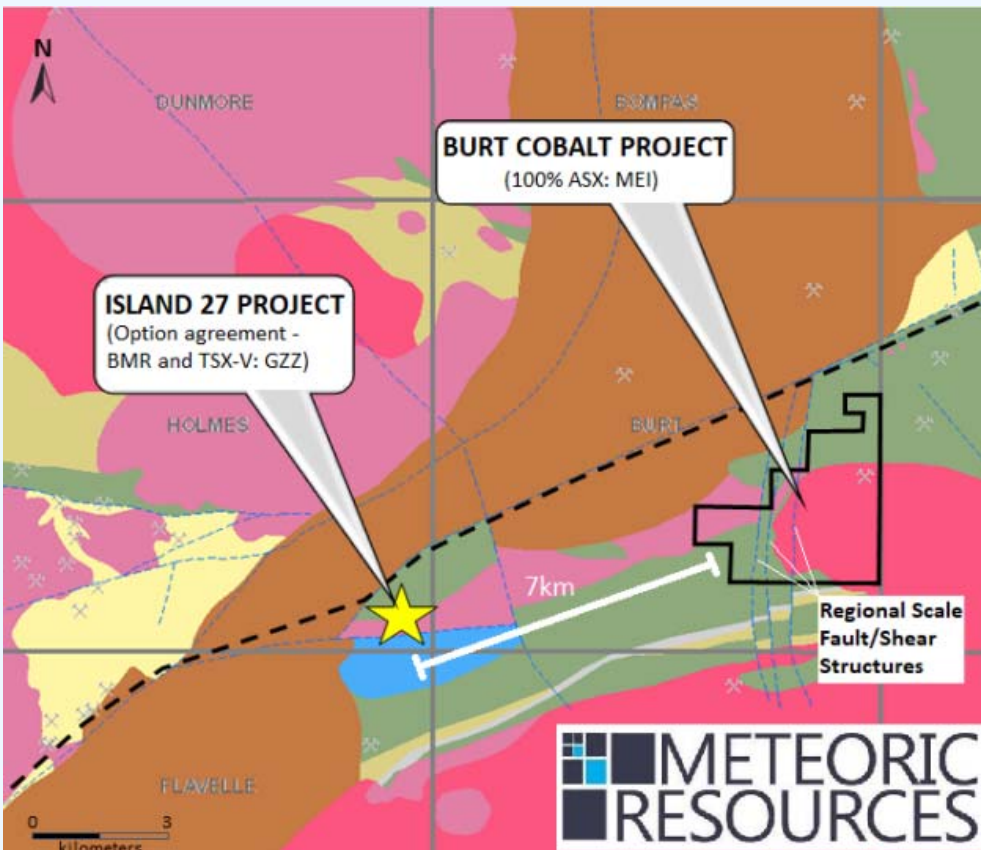
Location of Historical 10% Co average production with mining widths up to 2m wide. Historical workings targeted a 200m outcrop of Gabbro



Mulligan East Ontario

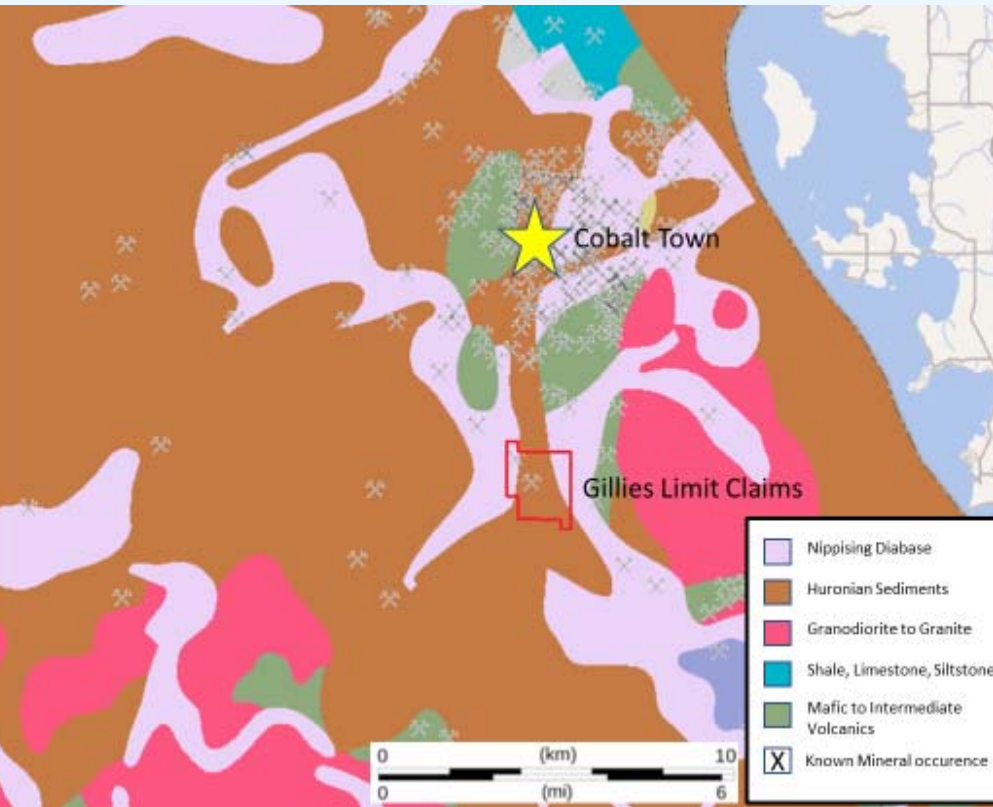
- An additional 90 claims covering 13.7km²
- Similar trending structures that hosted historical high-grade cobalt production at Mulligan grading 10% Co
- Nearby historical assays grading 4.5% Co and 87 g/t Ag within mineralisation at Foster Marshall
- Aeromagnetic data show several major NE structures in the east of the region

◀ Location of Historical 10% Co average production with mining widths up to 2m wide. Historical workings targeted a 200m outcrop of Gabbro



Burt Ontario

- 9.34 km² of highly prospective primary cobalt ground
- Located 7 km's directly along strike from Battery Minerals Resources' Island 27 project
- Burt Project hosts three major fault/shear zones representing over 5.7km of strike length potential for high-grade primary cobalt mineralisation
- Island 27 intercepted 4m 4.18% Co, 12.1 g/t Ag, 0.38% Ni and 0.098 g/t Au

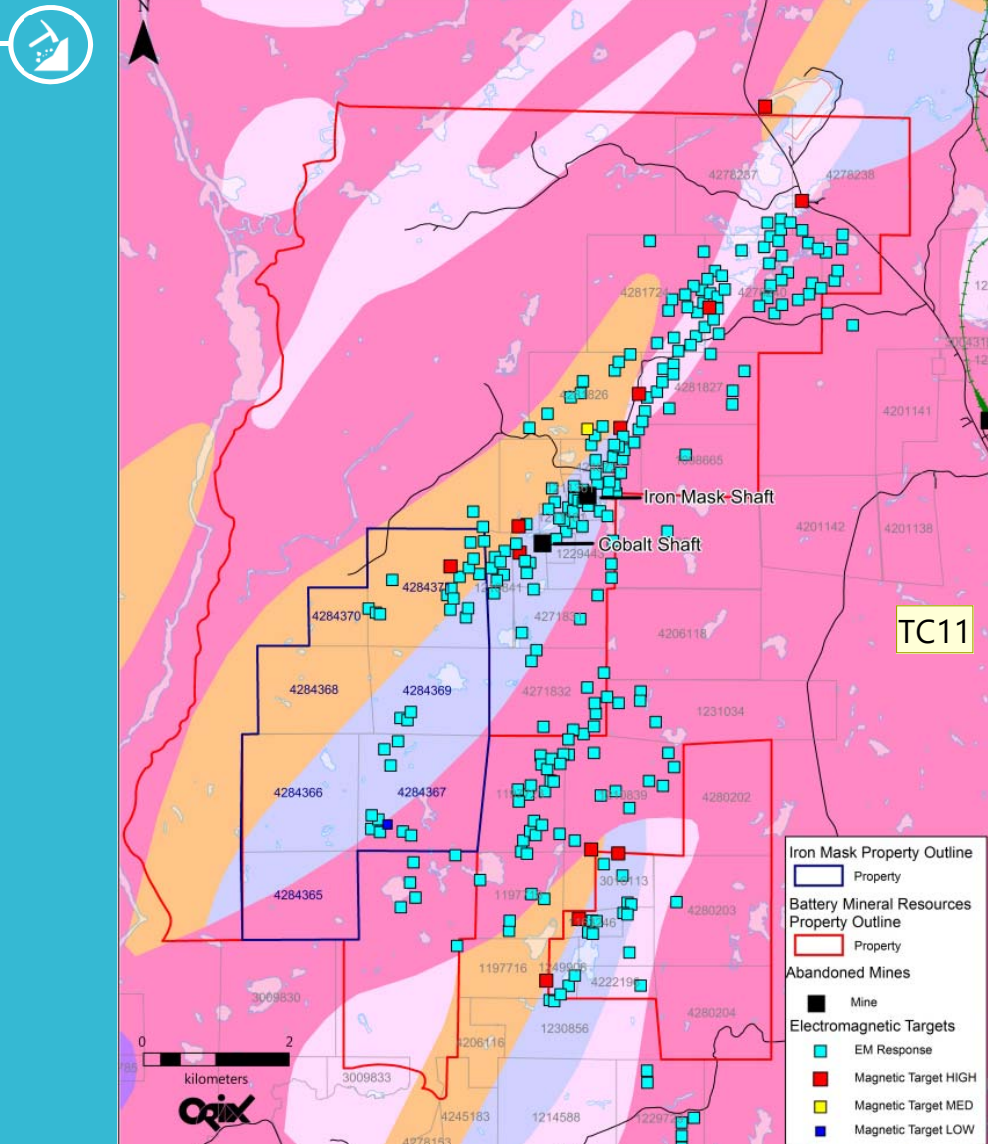


Gillies Limit

Ontario

- Entered into a conditional agreement to acquire 100% rights to Gillies Limit cobalt project
- Recent rock chip samples collected by vendors returned grades up to 1.6% cobalt
- Visible Cobalt (Erythrite and Smaltite) minerals exposed in outcrop throughout the property
- Within 2.5km of numerous historical high-grade cobalt and silver mines
- Historically a small open pit excavated to 15 feet exposed a steeply dipping vein of massive smaltite

Iron Mask



Iron Mask

Ontario

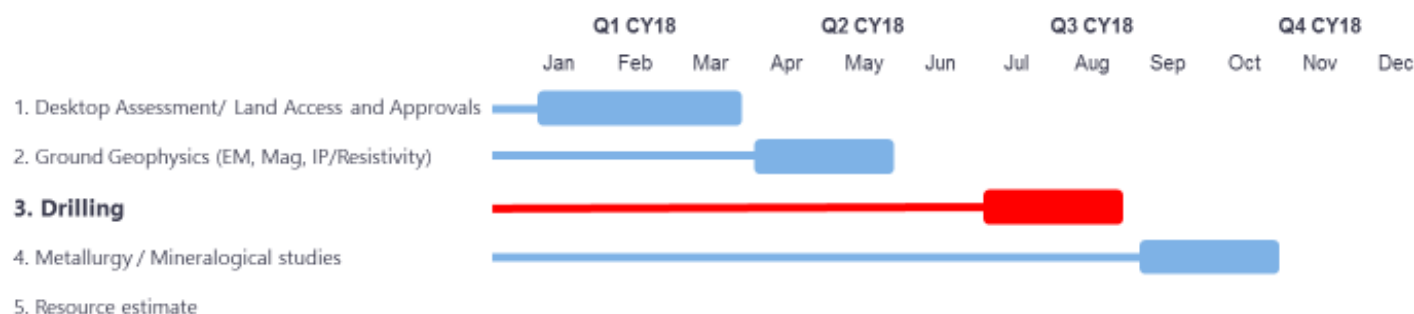
- 8 claims covering 1,408 hectares
- Sudbury Basin historical production exceeding US\$120 billion of nickel, copper and PGM metal
- Historical Iron Mask and Cobalt Shafts +Cobra showing 500m to NW:
 - Cobra Showing
 - Chip sampling grades 11.3% Co
 - Grab sampling 21.3% Co & 6.19% Ni
 - Cobalt Shaft
 - Bulk sample av. 15% Co and 279 g/t Ag
 - Grab sampling grades of up to 16% Co, 4.8% Ni and 17% Bi
 - Iron Mask Shaft
 - Channel sample 3.2% Co and 6 g/t Au
- EM and magnetic surveys confirm extension of mineralised zones into MEI claims
- Several geophysical targets identified from historic data compilation
 - mag highs relate to Cu-Co mineralisation
 - mag lows relate to Zn mineralisation

2017/18 Exploration Program – Primary cobalt projects

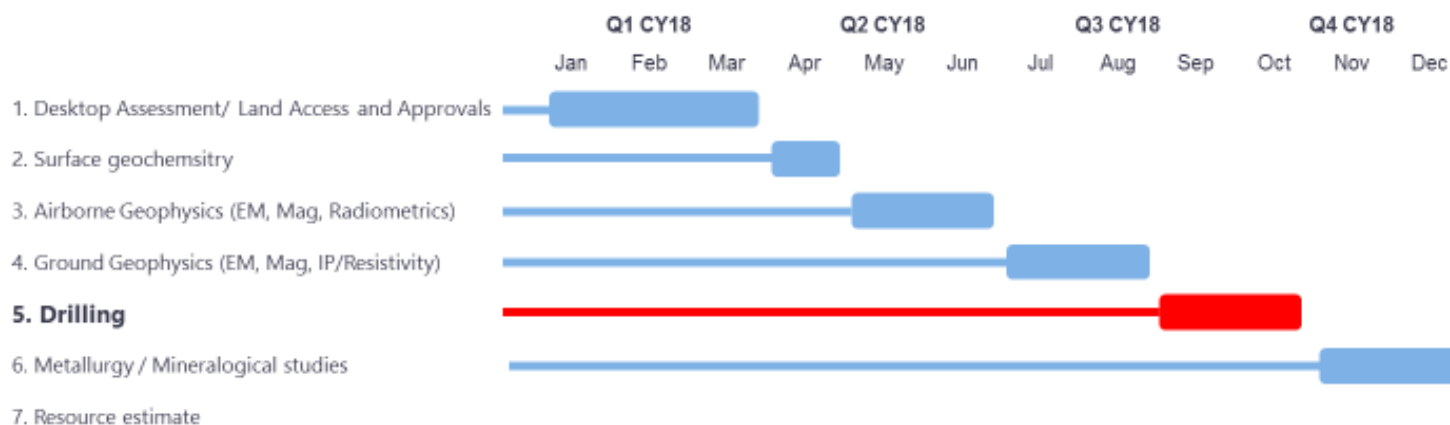


SEQUENCE OF EXPLORATION

Mulligan



Iron Mask

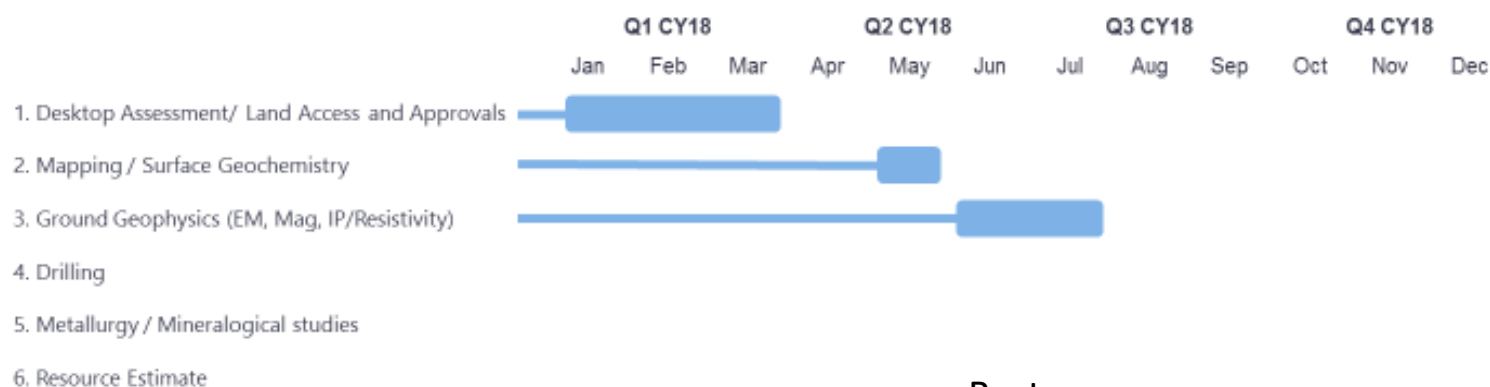


2017/18 Exploration Program – Primary cobalt projects

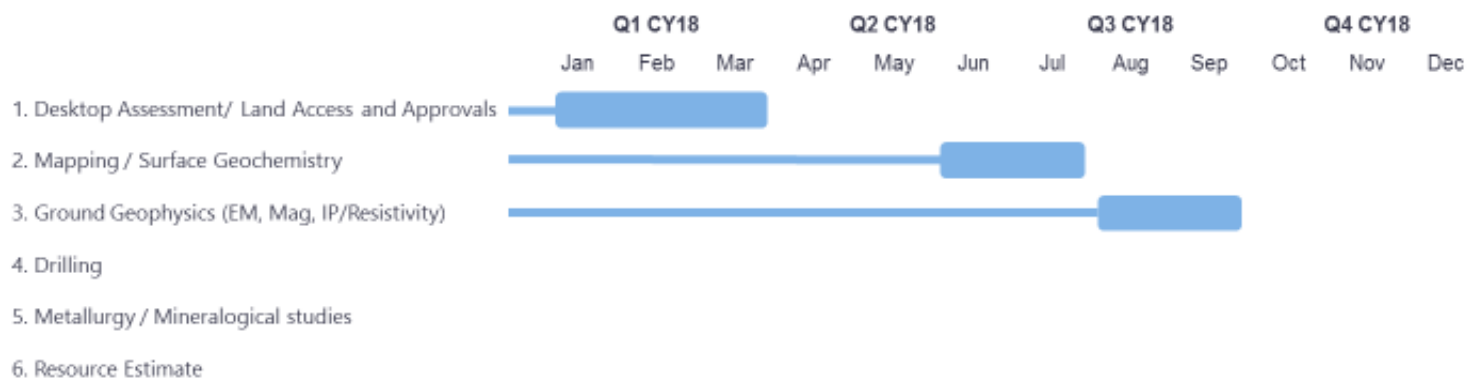


SEQUENCE OF EXPLORATION

Mulligan East



Burt





Polymetallic Projects

**BELLETERRE ANGLIERS GREENSTONE BELT (BAG), QUEBEC
- MIDRIM & LA FORCE**

OVERVIEW

- 100% **Midrim & LaForce** polymetallic projects
- Largest regional landholder (118km²)
- Historic Belleterre Au mine (**1.1 Moz**); Lorraine Cu/Ni mine (**14.28 Mlb Cu and 6.34 Mlb Ni**)
- Numerous Cu-Ni deposits in greater BAG area
- 2 Ni-Cu occurrences on MEI's claims
- Up to 95% Cu and 80% Ni recoveries after 10 minutes flotation
- AUD\$20M+ of historical data



Regional Geology

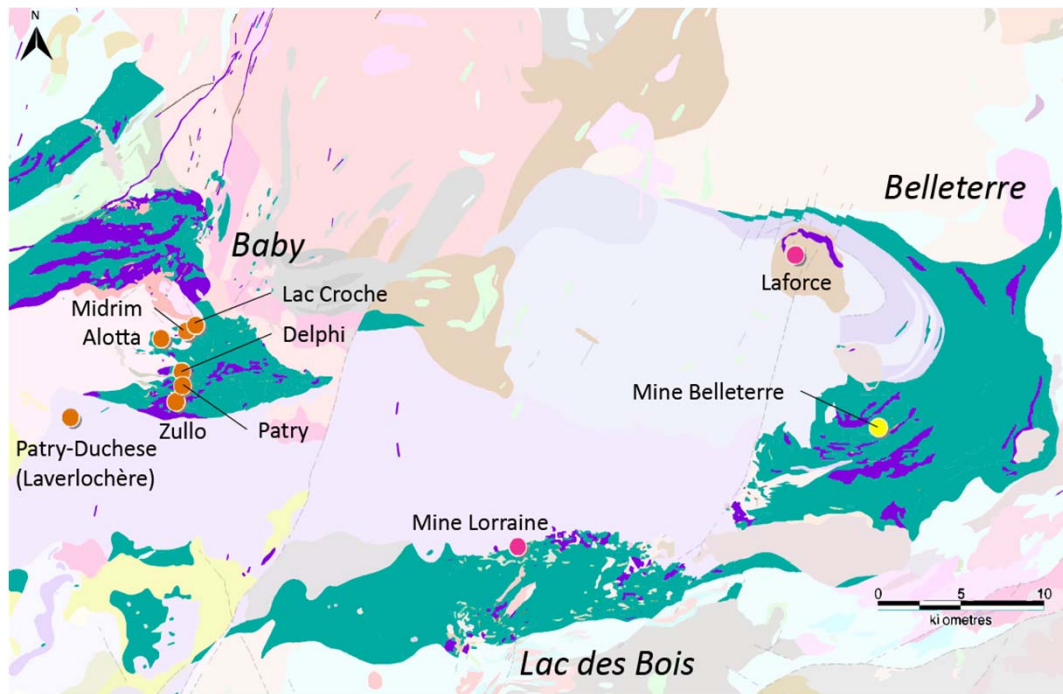


Figure 1.
**Temiscamingue Regional
Geology Belleterre – Angliers
Greenstone Belt**

Greenstone Belt Lithology
Mafic Volcanics
Gabbro

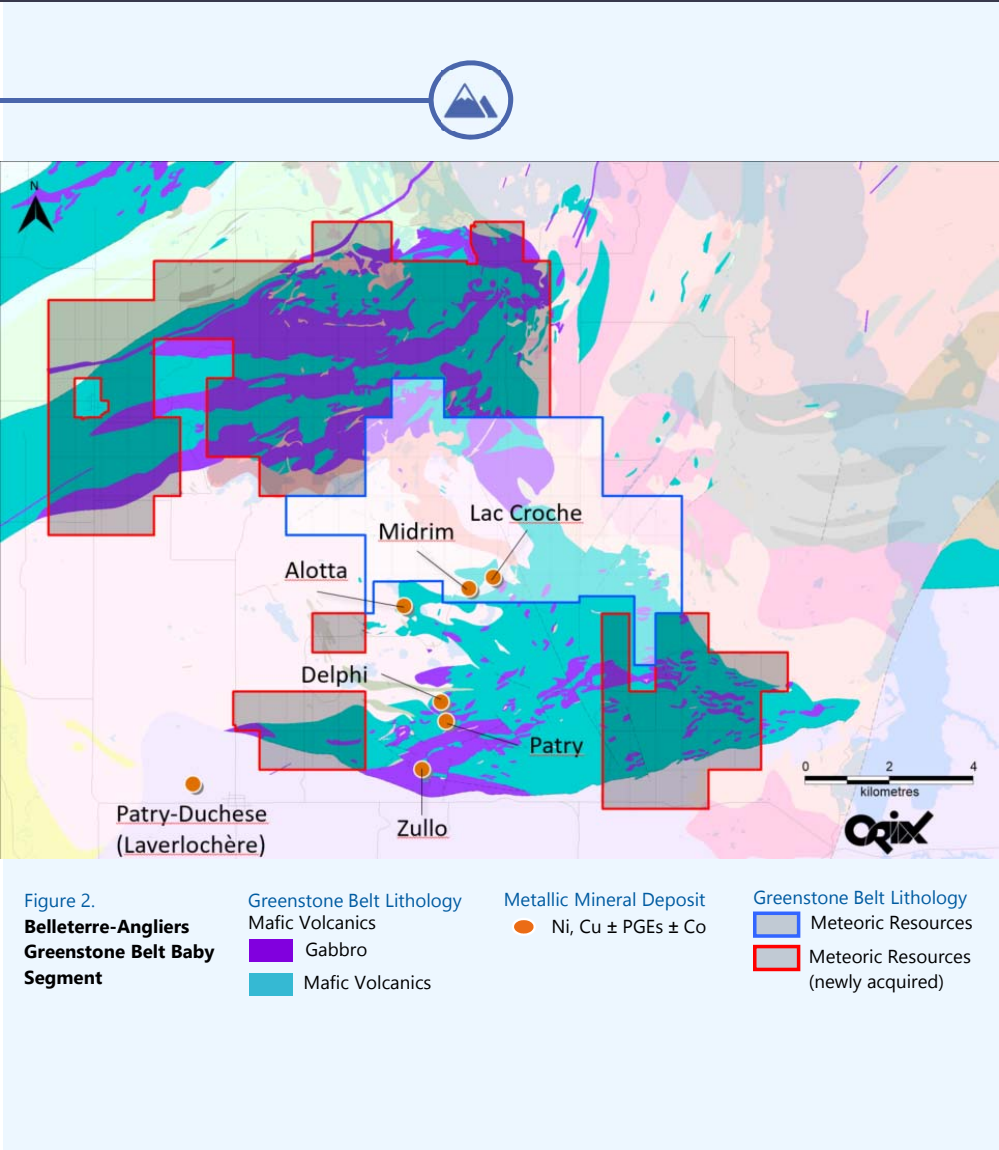
Metallic Mineral Deposit
Ni, Cu \pm PGEs \pm Co
Cu \pm Ni \pm PGEs

Au

OVERVIEW

- 600km N of Toronto & 25-60km E of Ontario-Quebec border
- 3 separate BAG segments: **Baby**, **Lac de Bois** and **Belleterre**
- BAG; surrounded by metasedimentary rocks; interpreted as large nappe up to 6km thick in Baby segment
- Shallow mineralised **gabbro sills** intruded in an island arc setting
- Mineralised **gabbroic sills**: disseminated sulphides (upper) grade to **massive sulphides** on basal contact
- Polymetallic mineral assemblage contains Au

Belleterre Angliers Greenstone Belt



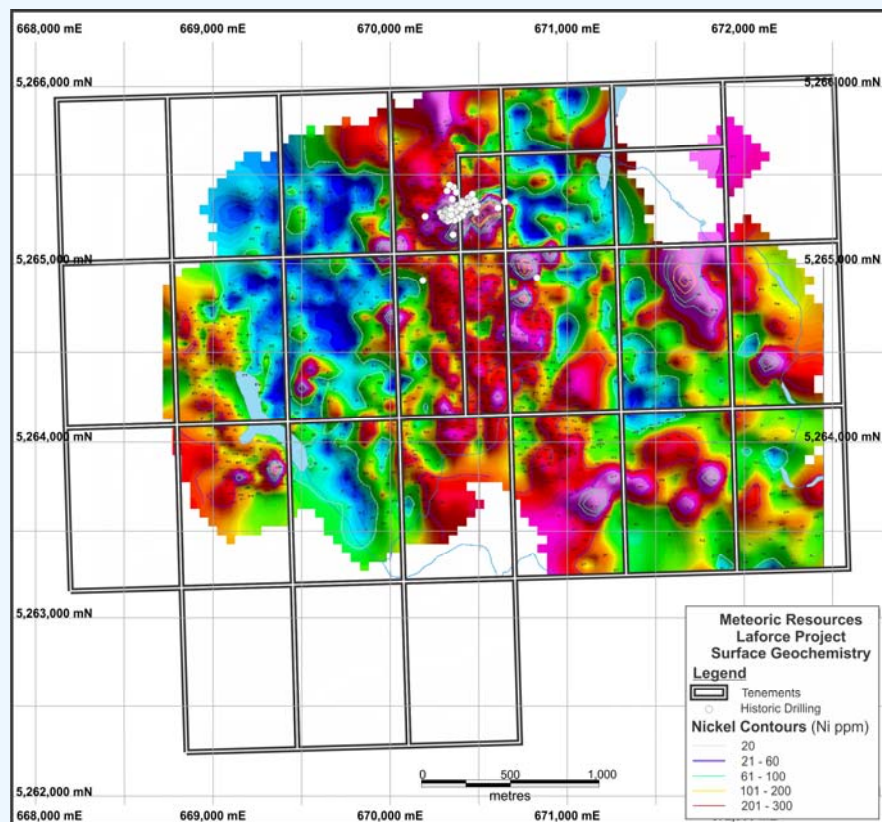
Midrim

BABY SEGMENT, QUEBEC

- Largest landholder in Baby segment (hosts Midrim deposit)
- 2 EM targets on MEI ground: historical drilling intercepted polymetallic mineralisation (Midrim and Lac Croche)
- Metallurgical recoveries up to 95% Cu and 80% Ni after 10 minutes flotation
- Recently completed drill program intercepted massive sulphide mineralisation over significant length at shallow depth:

Hole No.	From(m)	To (m)	Interval (m)	Cu (%)	Ni (%)	PGE g/t
MR-17-01	29.0	50.1	21.10	2.48	1.71	2.66
<i>including</i>	43.0	50.1	7.10	4.43	3.22	4.08
<i>&</i>	56.6	66.0	9.4	4.25	3.52	4.59
<i>including</i>	56.6	62.0	5.4	6.15	5.32	6.46
MR-17-03	50.5	52.9	2.4	0.65	0.35	0.81
<i>&</i>	56.6	58.8	2.2	1.79	0.28	1.60
MR-17-05	23.0	39.8	16.8	1.79	1.01	2.95
<i>including</i>	25.6	28.0	2.4	2.00	1.00	1.79
<i>including</i>	34.0	39.8	5.8	2.12	1.03	3.52
MR-17-06	107.0	111.7	4.7	0.87	0.52	0.92

Belleterre Angliers Greenstone Belt



Historical drilling focussed around the LaForce showing leaving numerous untested geochemical anomalies

La Force

BELLETERRE SEGMENT, QUEBEC

- 24 Cells covering 13.92 km²; S of Rouyn-Noranda mining camp in Western Quebec
- >AUD\$3.5m in historical drilling value
- 14,600m historical drilling; 3,500m of stored core yet to be assayed
- >20 Cu-Ni-Co-PGM polymetallic targets along 4.6km length of gabbroic intrusions to test
- Historical exploration focussed directly around La Force deposit
- Large tonnage potential; numerous mineralised intercepts

	From depth (m)	Length (m)	Cu %	Ni %	Co %
LF07-07	39.00	40.00	0.46	0.82	0.02
LF07-10	52.88	21.32	0.66	0.90	0.02
LF06-04	3.00	103.00	0.38	0.77	0.02

Why Meteoric Resources?



HUGE GLOBAL DEMAND FOR PRODUCT – Cobalt-Nickel-Copper-PGE's in huge demand on the back of the battery revolution

ADVANCED COBALT STRATEGY – Comprehensive program of exploration focused on cobalt in Ontario

CLEAR PATH TO PRODUCTION – Providing customers both security of supply and the use of sustainable mining practices

PROVEN MANAGEMENT TEAM – Taking exploration through to production along with battery technology / materials experience

QUALITY – High grade Cobalt-Nickel-Copper-PGE Projects located close to infrastructure

APPEALING VALUATION – Compelling valuation on an absolute & relative basis

TIMING – Comprehensive 2018 exploration program targeting cobalt resources in Ontario, Canada

LOCATION – Customers want security of supply without geo-political risk and production with environmentally sound & sustainable mining practices



METEORIC RESOURCES

For more information please do not hesitate to contact us at any time



Address

Ground Floor, Unit 5, 1 Centro Avenue
Subiaco, WA 6008



Contact Info

Email: ajtunks@meteoric.com.au
Website: www.meteoric.com.au



Telephone

Tel: 08 9486 4036

