

Thursday's Gossan Copper-Gold Porphyry – Diamond Drilling Update

New 124m Intercept of Porphyry 'M' Veins above the Low-Angle Structure Opens Up Area to the North

Broadest interval of porphyry 'M' veins seen to date in diamond hole SMD022 is 80m to the north-west of the original 'M' vein intercept in SMD015 – vectoring ongoing drilling into an area unconstrained by previous RC or diamond drilling

Highlights

- Further highly encouraging indications from recently completed diamond drill-hole SMD022 at Thursday's Gossan, which has intersected:
 - *The thickest interval of 124m of porphyry 'M' veins to date from 70m to 194m;*
 - *These 'M' veins are located at shallow depth above the low-angle structure (LAS) and are interpreted as being indicative of close proximity to copper-gold mineralisation.*
- SMD022 was drilled some 80m north-west of the original ~100m porphyry 'M' vein intercept in SMD015.
- Recently completed diamond holes SMD018, 019 and 020 were drilled south of SMD015 and intersected abundant quartz-pyrite ± chalcopyrite ± molybdenite stockwork veining and occasional porphyry 'D' veins, but only relatively narrow intervals of proximal porphyry 'M' veins.
- These are strong indications that the main mineralisation is located to the west/north-west of SMD015, in an area with no previous RC or diamond drilling.
- *"After the excitement of the 100m intercept of porphyry 'M' veins in SMD015, we decided to target the next drill holes to the south of this hole. In hindsight, we should have moved to the north, with SMD022 having encountered the thickest interval of porphyry 'M' veins to date. This is great news as we were spatially constrained to the south by our previous drilling, whereas there is no previous RC or diamond drilling to the west and north-west. We have plenty of room for a decent sized copper-gold porphyry system to the north-west and drilling continues with two diamond rigs.*

"It is the visual geology that is now driving our progress towards the core of the copper-gold porphyry at Thursday's Gossan. While we certainly have a large number of assays pending, they are not necessary to determine our next move, and the only intercept that counts now is the discovery intercept. In that respect, we will see it well before we get assays for it – with the only true unknown being what the gold grade is." – Stavelly Minerals' Managing Director Chris Cairns.

Stavelly Minerals Limited (ASX Code: **SVY** – "Stavelly Minerals") is pleased to provide a further update from the ongoing diamond drilling programme at its 100%-owned **Stavelly Copper-Gold Project** in western Victoria (Figure 1), where drilling at the Thursday's Gossan porphyry target continues to deliver significant encouragement.

The current drill programme follows previously announced copper, gold and silver mineralised drilling intercepts and technical results (see ASX announcements of 3 July 2017, 23 August 2017, 5 September 2017, 20 November 2017, and 12, 19, 24, 29 January 2018 and 16 February 2018).

Over the past several months drilling at Thursday’s Gossan has been systematically progressing with the objective of discovering copper-gold mineralisation associated with an alkalic porphyry system, similar to the Cadia Valley or the North Parkes copper-gold mines in central New South Wales. The Cadia-Ridgeway gold-copper deposit had total production to March 2012 of 76.7Mt at 1.83g/t gold and 0.63% copper for a contained 4.5 million ounces of gold and 483,000 tonnes of copper¹.

Recent drilling has strongly vindicated the application of this mineralisation model with the recent diamond drill hole SMD022 intersecting another 124m interval of early proximal magnetite-rich ‘M’ veins and associated fine sulphides.

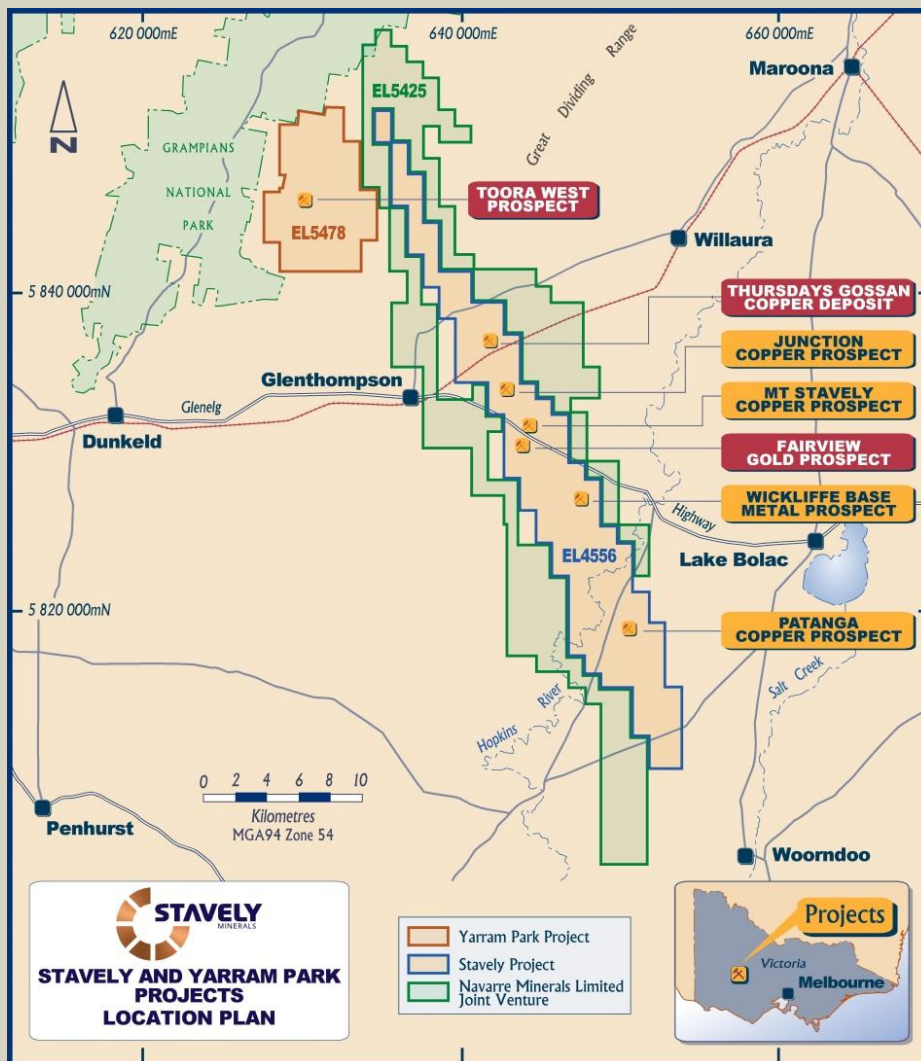


Figure 1. Project location map.

¹ Source: Porter GeoConsultancy Pty Ltd.

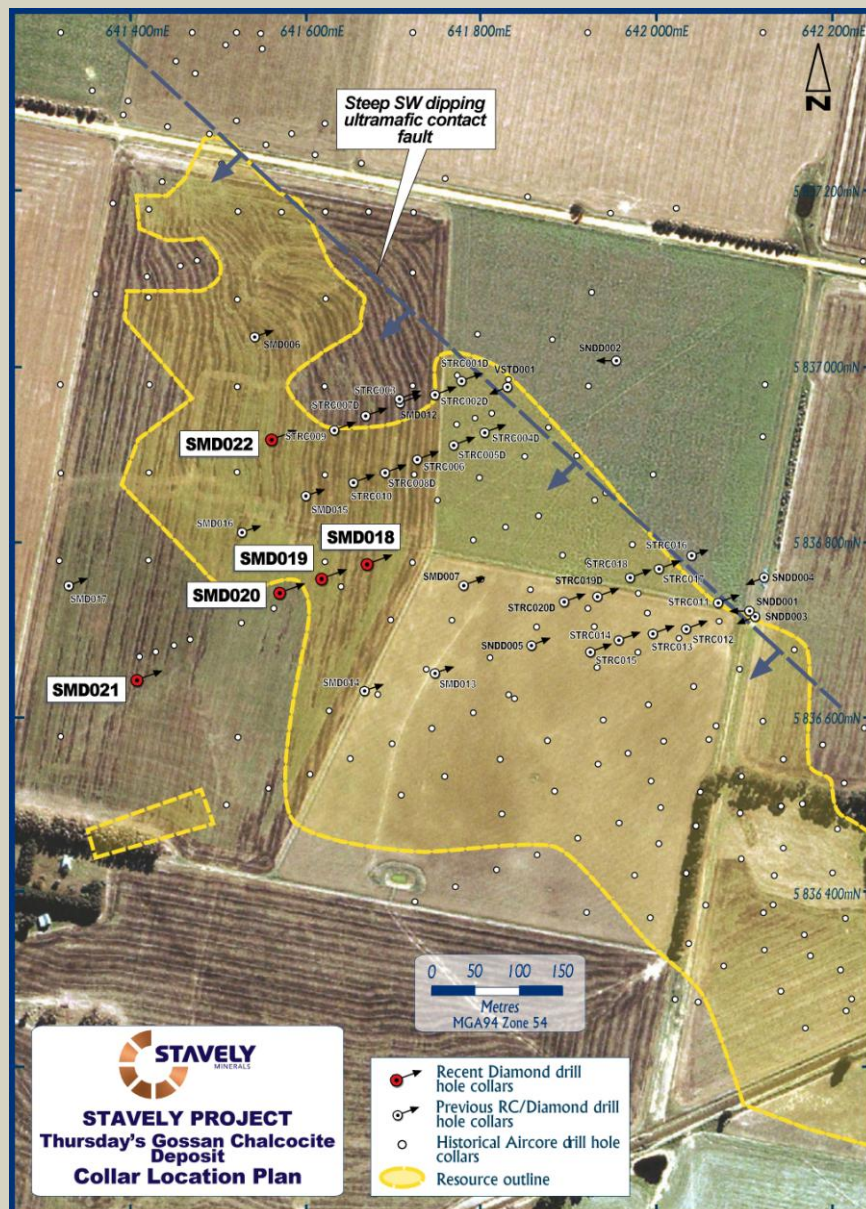


Figure 2. Drill collar location plan.

The most recent hole, SMD022, was the first hole drilled on a section 80m to the north-west of SMD015 (Figure 2). SMD015 had intersected the initial ~100m interval of magnetite-rich porphyry 'M' veins above the LAS.

SMD022

SMD022 intersected occasional quartz veins down to approximately 60m, after which the vein intensity increases. Moderate to strong stockwork quartz and quartz-magnetite 'M' veining was observed from around 70m down to 194m in a quartz-diorite porphyry (Figure 3 and Photo 1). There are trace pyrite veins and some trace pyrite and chalcopyrite observed in some quartz magnetite veins. From 173m to 194m there are regular larger quartz-pyrite ± chalcopyrite 'D' veins up to 20cm thick cross cutting the earlier quartz-magnetite veins (Photos 2 & 3). Below 194m, a dacite porphyry with hematite alteration of the groundmass with weak magnetite alteration was intersected. The vein density also decreased becoming much weaker.

The LAS was intersected at around 258m, beneath which the rock type changes to a porphyritic andesite to micro-diorite and the alteration is chlorite-epidote suggesting more distal propylitic alteration.

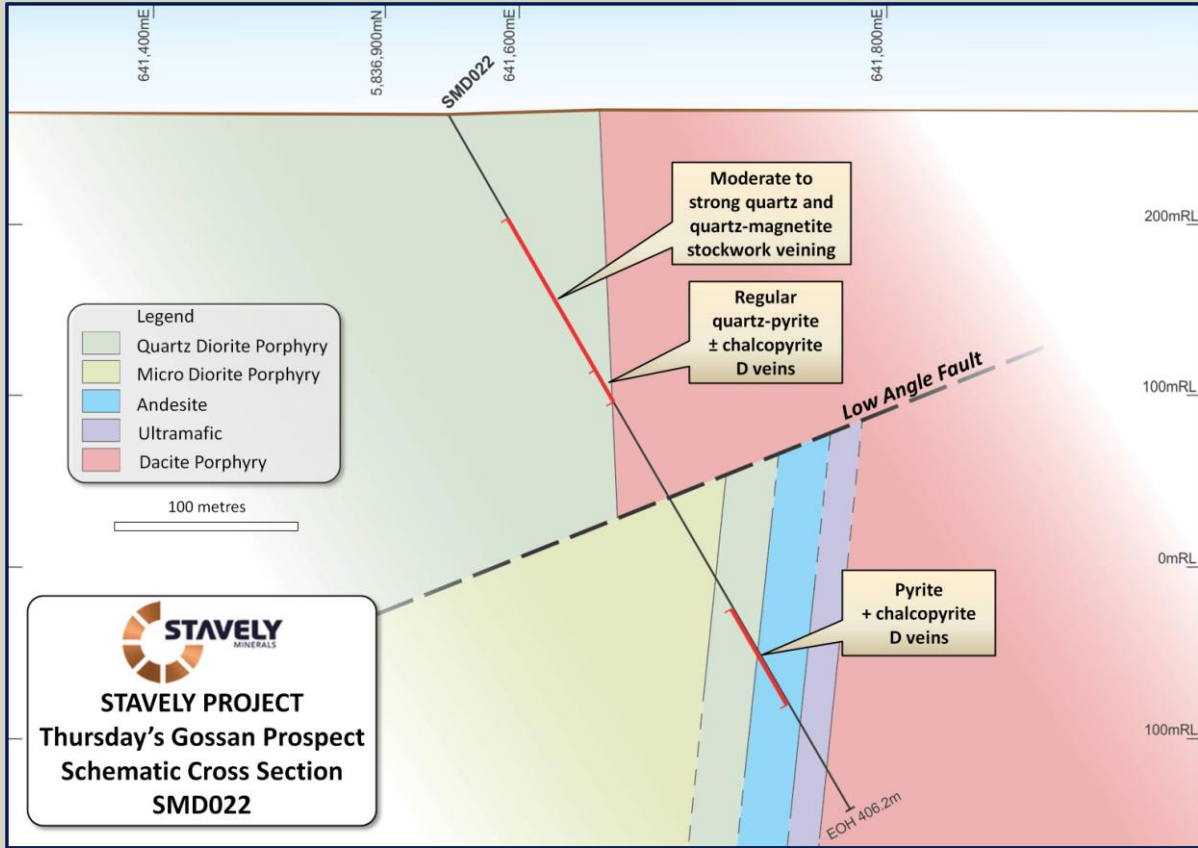


Figure 3. Preliminary drill section with SMD022.



Photo 1. Porphyry 'M' veins at 152m in SMD022, similar to 'M' veining at Cadia-Ridgeway.



Photo 2. Porphyry 'M' veins at 176m in SMD022. The early 'M' veins (bottom 2 rows) are overprinted by later sulphide-rich 'D' veins with characteristic sericite selvages (top 2 rows).

The 'M' veins in Photos 1 and 2 are interpreted as similar to the early pre-mineralisation 'M' veins described at the Cadia-Ridgeway mine.

The wider, laminated quartz magnetite 'M' vein shown in Photo 3 has been cut by a later pyrite 'D' vein. Both pyrite and chalcopyrite sulphides are noted as intergrown with the magnetite in the laminated 'M' veins. This type of laminated quartz-magnetite vein is similar to those associated with copper-gold mineralisation at Cadia-Ridgeway while at Cadia-Ridgeway the intergrown sulphide is bornite with a close affinity with gold mineralisation.



Photo 3. Laminated porphyry 'M' veins cut by pyrite 'D' vein at ~170m in SMD022.

SMD018, SMD019 and SMD020 (Figure 4)

SMD018 was drilled on a section 80m to the south of SMD015. The hole started off in siltstone before intersecting a quartz-diorite porphyry with weak-to-moderate stockwork quartz veining with trace pyrite-chalcopyrite-bornite. Trace supergene chalcocite was also observed. Occasional quartz-pyrite ± molybdenite porphyry 'D' veins were observed. This hole ended at 96.3m.

SMD019 was drilled to test beneath SMD018. The hole drilled through mostly siltstone to a depth of around 70m, where it intersected a sericite-chlorite altered quartz diorite porphyry with weak quartz stockwork veining and patchy weak quartz-magnetite veining down to 95m (Photo 4). Siltstone and micro-diorite porphyry were intersected down to the LAS at 275m. A chalcopyrite-quartz-pyrite 'D' vein was intersected at 245m (Photo 5) with trace hematite in the vein and on fractures. Beneath the LAS, the drill hole encountered occasional pyrite 'D' veins in micro diorite porphyry down to around 350m, beyond which the veining style changes to carbonate-pyrite+base metals down to the end-of-hole at 477.5m.



Photo 4. Quartz and quartz-magnetite stockwork veining at 88.0m in SMD019.

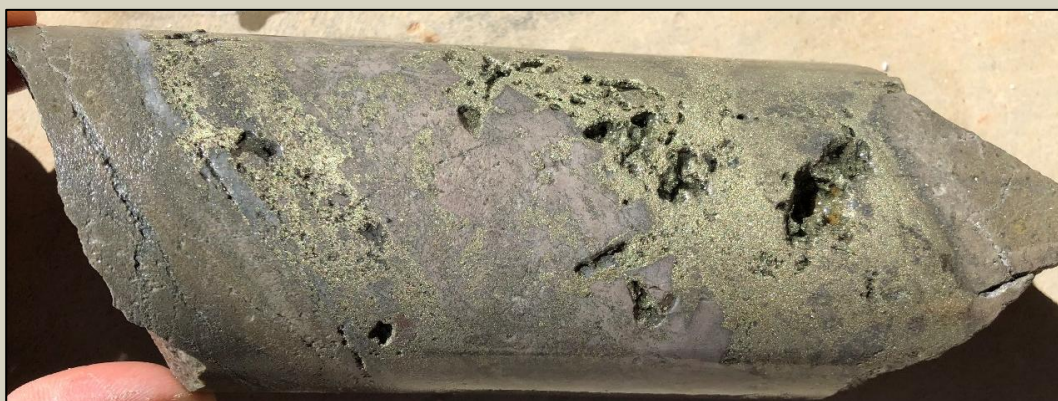


Photo 5. Chalcopyrite 'D' vein at 245m in SMD019.

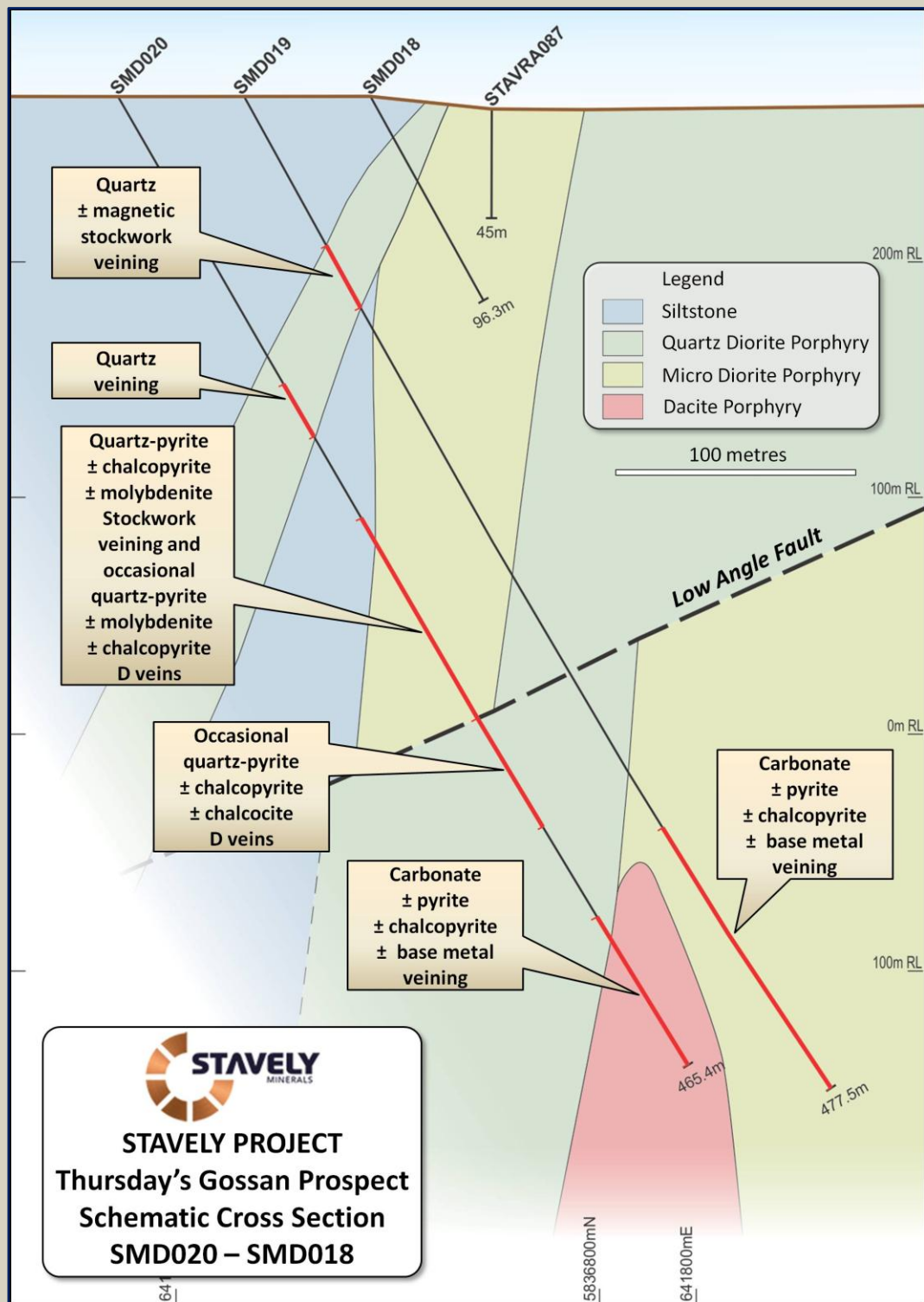


Figure 4. Drill section with SMD018-020.

SMD020 was drilled testing beneath SMD019. The hole drilled through siltstone down to 125m after which it intersected a quartz-diorite porphyry to 160m. Siltstone followed down to around 200m.

A micro-diorite porphyry was intersected with moderate quartz-pyrite ± chalcopyrite ± molybdenite stockwork veining and occasional quartz-pyrite ± molybdenite ± chalcopyrite 'D' veins (Photos 6 & 7) down to the LAS at 297m.

Above the LAS molybdenite is seen in the quartz-pyrite veins but below the LAS it was not observed. Below the LAS there was a mixture of andesite, micro diorite porphyry and dacite porphyry with occasional 'D' veins continuing to around 350m, some having trace chalcocite. From around 395m, the veining changed from quartz-sulphide dominated to carbonate-pyrite \pm base metal veins to the end-of-hole at 465.4m.



Photo 6. Quartz-pyrite-chalcopyrite 'D' vein at 235m in SMD020.

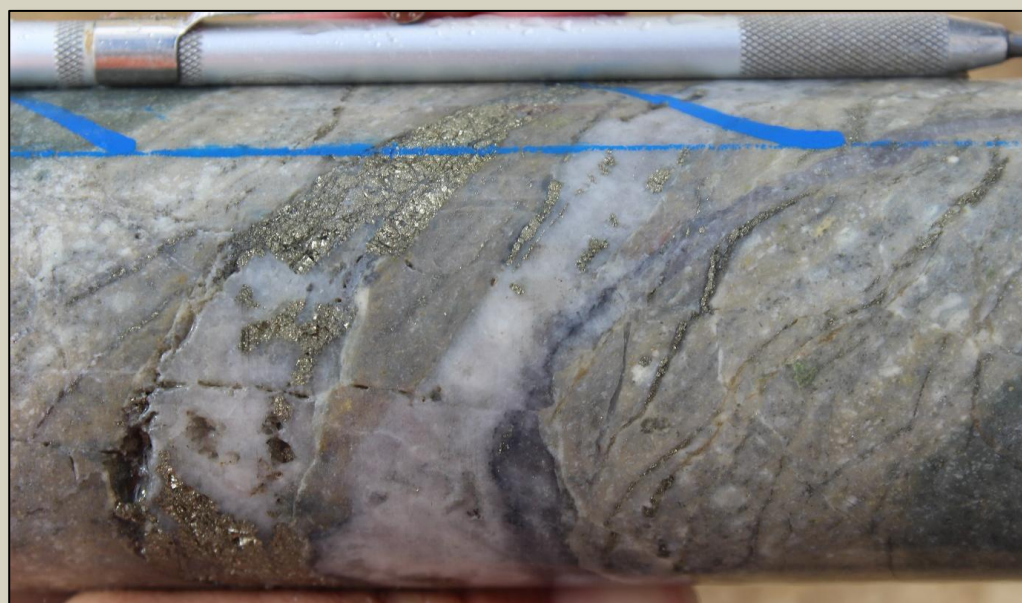


Photo 7. Quartz-pyrite-molybdenite 'D' vein at 248m in SMD020.

Forward Programme

Two diamond drill rigs are currently operating at Thursday's Gossan. Both rigs have moved to the north-west of previous drill holes SMD015 and SMD017 respectively testing targets both above and below the LAS.

It is hoped that future drill holes will intersect the better mineralised 'core' of the system, both above and also below the LAS, that chalcopyrite will transition to bornite as the dominant copper sulphide, and that gold grades should improve markedly due to gold's greater affinity with bornite.

Yours sincerely,



Chris Cairns
Managing Director

The information in this report that relates to Exploration Targets, Exploration Results, Mineral Resources or Ore Reserves is based on information compiled by Mr Chris Cairns, a Competent Person who is a Member of the Australian Institute of Geoscientists. Mr Cairns is a full-time employee of the Company. Mr Cairns is the Managing Director of Stavely Minerals Limited, is a substantial shareholder of the Company and is an option holder of the Company. Mr Cairns has sufficient experience that is relevant to the style of mineralisation and type of deposit under consideration and to the activity being undertaken to qualify as a Competent Person as defined in the 2012 Edition of the 'Australasian Code for Reporting of Exploration Results, Mineral Resources and Ore Reserves'. Mr Cairns consents to the inclusion in the report of the matters based on his information in the form and context in which it appears.

For Further Information, please contact:

Stavely Minerals Limited

Phone: 08 9287 7630

Email: info@stavely.com.au

Media Inquiries:

Nicholas Read – Read Corporate

Phone: 08 9388 1474

Thursday's Gossan Prospect						
MGA 94 zone 54						
Hole id	Hole Type	East	North	Dip/ Azimuth	RL (m)	Total Depth (m)
SMD018	DD	641670	5836772	-60	264	96.3
SMD019	DD	641620	5836755	-60	264	477.5
SMD020	DD	641570	5836740	-60	264	465.4
SMD021	DD	641410	5836640	-60	264	534.9
SMD022	DD	641560	5836915	-60	264	406.2

JORC Code, 2012 Edition – Table 1

Section 1 Sampling Techniques and Data

(Criteria in this section apply to all succeeding sections.)

Criteria	JORC Code explanation	Commentary
Sampling techniques	<i>Nature and quality of sampling (eg cut channels, random chips, or specific specialised industry standard measurement tools appropriate to the minerals under investigation, such as down hole gamma sondes, or handheld XRF instruments, etc). These examples should not be taken as limiting the broad meaning of sampling.</i>	<p>Stavely Project</p> <p>Thursday's Gossan Prospect</p> <p>Stavely Minerals' RC Drilling</p> <p>Reverse Circulation (RC) percussion drilling was used to produce a 1m bulk sample (~25kg) which was collected in plastic bags and representative 1m split samples (12.5% or nominally 3kg) were collected using a cone splitter and placed in a calico bag. The cyclone was cleaned out with compressed air at the end of each hole and periodically during the drilling. The 1m split samples were submitted for analysis.</p> <p>Stavely Minerals' Diamond Drilling</p> <p>The diamond core for intervals of interest, ie. those that contained visible sulphides as well as 5m above and below were sampled. PQ quarter core and HQ half core was submitted for analysis. Sample intervals were based on lithology but in general were 1m. No intervals were less than 0.4m or greater than 1.2m.</p> <p>Historical Drilling</p> <p>Historical aircore hole STAVRA077 was drilled by North Limited in 1994 to a depth of 39m at the Thursday's Gossan prospect. 3m composite samples were analysed.</p> <p>Historical diamond drill hole VSTD001 was drilled by Newcrest in 2002 to a depth of 520.7m to target the porphyry core. 2m composite samples were taken to a depth of 62m and then 1m samples to eoh. The samples were analysed for Au, Ag, As, Bi, Cu, Mo, Pb, S and Zn.</p> <p>Historical aircore hole TGAC004 was drilled by Beaconsfield Gold Mines Pty Ltd in 2006 to a depth of 80m. 3m composite samples were taken for the entire hole.</p> <p>Historical diamond hole SNDD001 was drilled by Beaconsfield Gold Mines Pty Ltd in 2008 to a depth of 321.9m. No sampling was done for the first 21m. From 21m to 321.9m composite samples based on lithology were analysed for Au, Ag, Co, Cu, Ni, Pb and Zn.</p> <p>Historical aircore hole TGAC016 was drilled by Beaconsfield Gold Mines Pty Ltd in 2008 to a depth of 78m. Sampling was done at 1m intervals, apart from when sampling the oxide zone where 2m composite samples were collected.</p> <p>Historical reverse circulation holes TGRC110 and TGRC136 were drilled by BCD in 2009 to a depth of 78m and 84m respectively. 1m interval samples were taken for the entire length of the holes.</p> <p>Historical aircore hole TGAC078 was drilled by BCD in</p>

Criteria	JORC Code explanation	Commentary
		<p>2009 to a depth of 59m. 2m composite samples were taken for the entire length of the hole.</p> <p>Historical aircore holes SAC029 and SAC030 were drilled by BCD in 2010 to a depth of 65m and 62m respectively. 1m interval samples were taken for the entire length of the holes.</p>
	<p><i>Include reference to measures taken to ensure sample representivity and the appropriate calibration of any measurement tools or systems used.</i></p>	<p>Stavelly Project</p> <p>Thursday's Gossan Prospect</p> <p>Stavelly Minerals' Diamond and RC Drilling</p> <p>Sample representivity was ensured by a combination of Company Procedures regarding quality control (QC) and quality assurance/ testing (QA). Certified standards and blanks were inserted into the assay batches.</p> <p>Historical Drilling</p> <p>No information available.</p>
	<p><i>Aspects of the determination of mineralisation that are Material to the Public Report - In cases where 'industry standard' work has been done this would be relatively simple (eg 'reverse circulation drilling was used to obtain 1 m samples from which 3 kg was pulverised to produce a 30 g charge for fire assay'). In other cases more explanation may be required, such as where there is coarse gold that has inherent sampling problems. Unusual commodities or mineralisation types (eg submarine nodules) may warrant disclosure of detailed information.</i></p>	<p>Stavelly Project</p> <p>Thursday's Gossan Prospect</p> <p>Stavelly Minerals' Diamond Drilling</p> <p>Drill sampling techniques are considered industry standard for the Stavelly work programme.</p> <p>PQ quarter core and HQ half core was submitted for analysis. Sample intervals were based on lithology but in general were 1m. No intervals were less than 0.3m or greater than 1.8m.</p> <p>The diamond drill samples were submitted to Australian Laboratory Services ("ALS") in Orange, NSW. Laboratory sample preparation involved:- sample crush to 70% < 2mm, riffle/rotary split off 1kg, pulverize to >85% passing 75 microns.</p> <p>Diamond core samples were analysed by ME-ICP61 – multi acid digest with HF and ICPAES and ICPMS and Au-AA23 – fire assay with AAS finish.</p> <p>Stavelly Minerals' RC Drilling</p> <p>Drill sampling techniques are considered industry standard for the Stavelly work programme.</p> <p>The 1m split samples were submitted to Australian Laboratory Services ("ALS") in Orange, NSW. Laboratory sample preparation involved:- sample crush to 70% < 2mm, riffle/rotary split off 1kg, pulverize to >85% passing 75 microns.</p> <p>The RC samples were analysed by ME-ICP61 – multi acid digest with HF and ICPAES and ICPMS and Au-AA23 – fire assay with AAS finish.</p> <p>Historical Drilling</p> <p>No sample preparation is available for the historical drilling.</p>

Criteria	JORC Code explanation	Commentary
<p>Drilling techniques</p>	<p><i>Drill type (eg core, reverse circulation, open-hole hammer, rotary air blast, auger, Bangka, sonic, etc) and details (eg core diameter, triple or standard tube, depth of diamond tails, face-sampling bit or other type, whether core is orientated and if so, by what method, etc).</i></p>	<p>Stavely Project</p> <p>Thursday's Gossan Prospect</p> <p>Stavely Minerals' Diamond Drilling</p> <p>Diamond drill holes were drilled by Titeline Drilling in 2014 (SMD001, SMD003 and SMD004) and 2017 (SMD006, SMD007, SMD008 and SMD012). Diamond tails were completed on drill holes STRC001D, STRC002D, STRC004D, STRC005D, STRC007D, STRC008D, STRC019D and STRC020D. Holes SMD013, SMD014 and SMD015 were drilled in 2017 by Titeline Drilling. Holes SMD016, SMD017, SMD018, SMD019, SMD020, SMD021 and SMD022 were drilled in 2018 by Titeline Drilling. For the diamond holes, drilling was used to produce drill core with a diameter of 85mm (PQ) from surface until the ground was sufficiently consolidated and then core with a diameter of 63.5mm (HQ) was returned. For the diamond tails, drilling was used to produce drill core with a diameter of 63.5mm (HQ) was returned.</p> <p>Diamond drilling was standard tube. Diamond core was orientated by the Reflex ACT III core orientation tool.</p> <p>SMD003 was orientated at -60° towards azimuth 060° to a depth of 522.3m.</p> <p>SMD006, SMD007 and SMD008 were orientated at -60° towards azimuth 070° to depths of 353.3m, 355.6m and 240m respectively. SMD012 was orientated at -60° towards azimuth 065° to a depth of 206.6m.</p> <p>SMD013, SMD014 and SMD015 were orientated at -60° towards azimuth 070° to depths of 573.9m, 738.9m and 448.1m respectively. SMD016 was orientated at -60° towards azimuth 080° to a depth of 467.6m.</p> <p>SMD017, SMD018, SMD019, SMD020, SMD021 and SMD022 were orientated at -60° towards azimuth 070° to depths of 793.6m, 96.3m, 477.5m, 465.4m, 534.9m and 406.2m, respectively.</p> <p>Stavely Minerals' RC Drilling</p> <p>The RC holes were drilled by Budd Exploration Drilling P/L. The RC percussion drilling was conducted using a UDR 1000 truck mounted rig with onboard air. A Sullair 350/1150 auxiliary compressor was used. 4" RC rods were used and 5¹/₄" to 5³/₄" drill bits. A Reflex Digital Ezy-Trac survey camera was used.</p> <p>The holes were orientated at -60° towards azimuth 070°.</p> <p>Historical Drilling</p> <p>Historical hole STAVRA077 is an aircore hole drilled by North Limited in 1994. The hole was drilled vertically. No other drilling details are known.</p> <p>Historical hole VSTD001 was drilled by Newcrest in 2002 using a diamond drill rig. The drilling was conducted by Silver City Drilling. The first 62m were drilled by aircore. HQ core was drilled between 62m and 255.7m and NQ core between 255.7m and 520.7m. The hole was orientated</p>

Criteria	JORC Code explanation	Commentary
		<p>at -50° towards azimuth 256°.</p> <p>Historical aircore hole TGAC004 was drilled by Beaconsfield Gold Mines Pty Ltd in 2006 to a depth of 80m. The drilling was conducted by Blacklaws Drilling Services using a truck mounted Wallis Mantis rig with a 450cfm/200psi compressor.</p> <p>Historical hole SNDD001 was drilled by Beaconsfield Gold Mines Pty Ltd in 2008 using a diamond drill rig. The drilling was conducted by Silver City Drilling with a Mantis 700 rig. The hole was oriented at -50° towards magnetic azimuth 265°. HQ triple tube was drilled from 0m to 56.6m and then NQ to 321.9m.</p> <p>Historical aircore hole TGAC016 was drilled by Beaconsfield Gold Mines Pty Ltd in 2008 to a depth of 78m. The hole was drilled vertically by Wallis Drilling.</p> <p>Historical reverse circulation holes TGRC110 and TGRC136 were drilled by BCD in 2009 to a depth of 78m and 84m respectively. Drilling was conducted by Budd Exploration Drilling P/L using a Universal drill rig. TGRC110 was oriented at -60° towards magnetic azimuth 349°. TGRC136 was oriented at -60° towards magnetic azimuth 064°.</p> <p>Historical aircore hole TGAC078 was drilled by BCD in 2009 to a depth of 59m. Drilling was conducted by Budd Exploration Drilling P/L using a Universal drill rig. TGAC078 was oriented at -50° towards magnetic azimuth 231°.</p> <p>Historical aircore holes SAC029 and SAC030 were drilled by BCD in 2010 to a depth on 65m and 62m respectively. The holes were drilled vertically by Blacklaws Drilling Services.</p>
<p>Drill sample recovery</p>	<p><i>Method of recording and assessing core and chip sample recoveries and results assessed.</i></p>	<p>Stavelly Project</p> <p>Thursday's Gossan Prospect</p> <p>Stavelly Minerals' Diamond Drilling</p> <p>Diamond core recoveries were logged and recorded in the database.</p> <p>Core recovery for SMD001, SMD003 and SMD007 was good. In general, the core recovery for SMD012 was good but there were several intervals where core was lost or there was poor core recovery.</p> <p>Core recoveries for SMD013, SMD014, SMD015, SMD016, and SMD017 were generally very good, with the vast majority of intervals returning +95% recovery and only a few intervals, mainly near the surface returning poor (<50%) recoveries. Core recoveries for SMD018, SMD019, SMD020, SMD021 and SMD022 were good with the holes averaging above 92% recovery for the total hole.</p> <p>Stavelly Minerals' RC Drilling</p> <p>RC sample recovery was good. Booster air pressure was used to keep the samples dry despite the hole producing</p>

Criteria	JORC Code explanation	Commentary
		<p>a significant quantity of water. RC sample recovery was visually checked during drilling for moisture or contamination.</p> <p>Historical Drilling</p> <p>Diamond core recoveries were logged and recorded for historical drill hole SNDD001.</p>
	<p><i>Measures taken to maximise sample recovery and ensure representative nature of the samples.</i></p>	<p>Stavelly Project</p> <p>Thursday's Gossan Prospect</p> <p>Stavelly Minerals' Diamond Drilling</p> <p>Diamond core is reconstructed into continuous runs on an angle iron cradle for orientation marking. Depths are checked against the depth given on the core blocks and rod counts are routinely carried out by the driller.</p> <p>Stavelly Minerals' RC Drilling</p> <p>The RC samples are collected by plastic bag directly from the rig-mounted cyclone and laid directly on the ground in rows of 10. The drill cyclone and sample buckets are cleaned between rod-changes and after each hole to minimise down-hole and/or cross contamination.</p> <p>Historical Drilling</p> <p>No details are available for the historical drill holes.</p>
	<p><i>Whether a relationship exists between sample recovery and grade and whether sample bias may have occurred due to preferential loss/gain of fine/coarse material.</i></p>	<p>Stavelly Project</p> <p>Thursday's Gossan Prospect</p> <p>Stavelly Minerals' Diamond Drilling</p> <p>Not an issue relevant to diamond drilling.</p> <p>Stavelly Minerals' RC Drilling</p> <p>No analysis has been undertaken as yet regarding whether sample bias may have occurred due to preferential loss/gain of fine/coarse material and is not considered to have a material effect given the good sample recovery.</p> <p>Historical Drilling</p> <p>No details are available for the historical drill holes.</p>
<p>Logging</p>	<p><i>Whether core and chip samples have been geologically and geotechnically logged to a level of detail to support appropriate Mineral Resource estimation, mining studies and metallurgical studies.</i></p>	<p>Stavelly Project</p> <p>Thursday's Gossan Prospect</p> <p>Stavelly Minerals' Diamond and RC Drilling</p> <p>Geological logging of samples followed Company and industry common practice. Qualitative logging of samples including, but not limited to, lithology, mineralogy, alteration, veining and weathering. Diamond core logging included additional fields such as structure and geotechnical parameters.</p> <p>Magnetic Susceptibility measurements were taken for each 1m RC and diamond core interval.</p> <p>Historical drilling</p> <p>All holes were geologically logged.</p>

Criteria	JORC Code explanation	Commentary
	<i>Whether logging is qualitative or quantitative in nature. Core (or costean, channel, etc) photography.</i>	<p>Stavely Project</p> <p>Thursday's Gossan Prospect</p> <p>Stavely Minerals' Diamond Drilling</p> <p>All logging is quantitative, based on visual field estimates. Systematic photography of the diamond core in the wet and dry form was completed.</p> <p>Stavely Minerals' RC Drilling</p> <p>All logging is quantitative, based on visual field estimates. Chip trays with representative 1m RC samples were collected and photographed then stored for future reference.</p> <p>Historical Drilling</p> <p>All logging is quantitative, based on visual field estimates.</p>
	<i>The total length and percentage of the relevant intersections logged.</i>	<p>Stavely Project</p> <p>Thursday's Gossan Prospect</p> <p>Stavely Minerals' Diamond Drilling</p> <p>Detailed diamond core logging, with digital capture, was conducted for 100% of the core by Stavely Minerals' on-site geologist at the Company's core shed near Glenthompson.</p> <p>Stavely Minerals' RC Drilling</p> <p>All RC chip samples were geologically logged by Stavely Minerals' on-site geologist on a 1m basis, with digital capture in the field.</p> <p>Historical Drilling</p> <p>Historical holes have been logged in their entirety.</p>
Sub-sampling techniques and sample preparation	<i>If core, whether cut or sawn and whether quarter, half or all core taken.</i>	<p>Stavely Project</p> <p>Thursday's Gossan Prospect</p> <p>Stavely Minerals' Diamond Drilling</p> <p>Quarter core for the PQ diameter diamond core and half core for the HQ diameter core was sampled on site using a core saw.</p> <p>Historical Drilling</p> <p>For historical hole SNDD001 half core was sampled. No details are given for VSTD001.</p>
	<i>If non-core, whether riffled, tube sampled, rotary split, etc and whether sampled wet or dry.</i>	<p>Stavely Project</p> <p>Thursday's Gossan Prospect</p> <p>Stavely Minerals' RC Drilling</p> <p>Splitting of RC samples occurred via a rotary cone splitter by the RC drill rig operators. Cone splitting of RC drill samples occurred regardless of whether the sample was wet or dry.</p> <p>Historical Drilling</p> <p>No details are given for historical aircore and RC holes.</p>

Criteria	JORC Code explanation	Commentary
	<i>For all sample types, the nature, quality and appropriateness of the sample preparation technique.</i>	<p>Stavely Project Thursday's Gossan Prospect Stavely Minerals' Diamond and RC Drilling</p> <p>Company procedures were followed to ensure sub-sampling adequacy and consistency. These included, but were not limited to, daily work place inspections of sampling equipment and practices.</p> <p>Historical Drilling</p> <p>No details of sample preparation are given for the historical drilling.</p>
	<i>Quality control procedures adopted for all sub-sampling stages to maximise representivity of samples.</i>	<p>Stavely Project Thursday's Gossan Prospect Stavely Minerals' Diamond and RC Drilling</p> <p>Blanks and certified reference materials are submitted with the samples to the laboratory as part of the quality control procedures.</p> <p>Historical Drilling</p> <p>No details of quality control procedures are given for the historical drilling.</p>
	<i>Measures taken to ensure that the sampling is representative of the in situ material collected, including for instance results for field duplicate/second-half sampling.</i>	<p>Stavely Project Thursday's Gossan Prospect Stavely Minerals' Diamond and RC Drilling</p> <p>No second-half sampling of the diamond core or field duplicates for the RC drilling has been conducted at this stage.</p> <p>Historical Drilling</p> <p>No details are given for the historical drilling.</p>
	<i>Whether sample sizes are appropriate to the grain size of the material being sampled.</i>	<p>Stavely Project Thursday's Gossan Prospect Stavely Minerals' Diamond and RC Drilling</p> <p>The sample sizes are considered to be appropriate to correctly represent the sought mineralisation.</p> <p>Historical Drilling</p> <p>The sample sizes are considered to be appropriate to correctly represent the sought mineralisation.</p>
Quality of assay data and laboratory tests	<i>The nature, quality and appropriateness of the assaying and laboratory procedures used and whether the technique is considered partial or total.</i>	<p>Stavely Project Thursday's Gossan Prospect Stavely Minerals' Diamond and RC Drilling</p> <p>The core samples and 1m RC split samples were analysed by multielement ICPAES Analysis - Method ME-ICP61. A 0.25g sample is pre-digested for 10-15 minutes in a mixture of nitric and perchloric acids, then hydrofluoric acid is added and the mixture is evaporated to dense fumes of perchloric (incipient dryness). The residue is leached in a mixture of nitric and hydrochloric acids, the solution is then cooled and diluted to a final volume of 12.5mls. Elemental concentrations are measured simultaneously by ICP Atomic Emission Spectrometry.</p>

Criteria	JORC Code explanation	Commentary
		<p>This technique approaches total dissolution of most minerals and is considered an appropriate assay method for porphyry copper-gold systems.</p> <p>The core samples and 1m RC split samples were also analysed for gold using Method Au-AA23. Up to a 30g sample is fused at approximately 1,100°C with alkaline fluxes including lead oxide. During the fusion process lead oxide is reduced to molten lead which acts as a collector for gold. When the fused mass is cooled the lead separates from the impurities (slag) and is placed in a cupel in a furnace at approximately 900°C. The lead oxidizes to lead oxide, being absorbed by the cupel, leaving a bead (prill) of gold, silver (which is added as a collector) and other precious metals. The prill is dissolved in aqua regia with a reduced final volume. Gold content is determined by flame AAS using matrix matched standards. For samples which are difficult to fuse a reduced charge may be used to yield full recovery of gold. This technique approaches total dissolution of most minerals and is considered an appropriate assay method for detecting gold mineralisation.</p> <p>Historical Drilling</p> <p>Samples from historical diamond hole SNDD001 were analysed at Amdel Laboratory. Gold was analysed by Fire assay and the multi-elements by aqua regia with ICPOES finish.</p> <p>Samples from TGRC110, TGRC136 and TGAC078 were submitted for the analysis of Au, Ag, As, Cu, Co, Fe, Ni, Pb, S and Zn. All elements except Au were assayed by ICP/OES methods. Gold was analysed using the Fire Assay method. Samples were submitted to either Genalysis Laboratory Services Pty Ltd (Amdel) in Adelaide or to Aminya Laboratories Pty Ltd (Onsite Laboratory Services) in Bendigo for analysis.</p> <p>Samples from TGAC016 were submitted to Amdel Laboratory for Au by Fire assay and Ag, As, Cu, Fe, S, Pb and Zn by ICP/OES.</p> <p>Samples for TGAC004 were submitted to Onsite Laboratory Services in Bendigo for Au analysis by Fire Assay and Cu by ICP/OES.</p> <p>Holes SAC029 and SAC030 were submitted to Onsite Laboratory Services in Bendigo. Au was analysed by Fire assay, Hg by cold vapour and Ag, As, Bi, Cu, Pb, S and Zn by ICP/OES.</p>
	<p><i>For geophysical tools, spectrometers, handheld XRF instruments, etc, the parameters used in determining the analysis including instrument make and model, reading times, calibrations factors applied</i></p>	

Criteria	JORC Code explanation	Commentary
	<i>and their derivation, etc.</i>	
	<i>Nature of quality control procedures adopted (eg standards, blanks, duplicates, external laboratory checks) and whether acceptable levels of accuracy (ie lack of bias) and precision have been established.</i>	<p>Stavelly Project Thursday's Gossan Prospect Stavelly Minerals' Diamond and RC Drilling</p> <p>Laboratory QAQC involved the submission of standards and blanks. For every 20 samples submitted either a standard or blank was submitted.</p> <p>The analytical laboratory provide their own routine quality controls within their own practices. The results from their own validations were provided to Stavelly Minerals.</p> <p>Results from the CRM standards and the blanks gives confidence in the accuracy and precision of the assay data returned from ALS.</p> <p>Historical Drilling</p> <p>No quality control data available for historical drilling.</p>
Verification of sampling and assaying	<i>The verification of significant intersections by either independent or alternative company personnel.</i>	<p>Stavelly Project Thursday's Gossan Prospect Stavelly Minerals' Diamond and RC Drilling</p> <p>Either Stavelly Minerals' Managing Director or Technical Director has visually verified significant intersections in the core and RC chips at Thursday's Gossan.</p> <p>Historical Drilling</p> <p>Stavelly Minerals' Managing Director has visually verified the significant intersections in historical diamond hole SNDD001.</p>
	<i>The use of twinned holes.</i>	No twinned holes have been drilled.
	<i>Documentation of primary data, data entry procedures, data verification, data storage (physical and electronic) protocols.</i>	<p>Stavelly Project Thursday's Gossan Prospect Stavelly Minerals' Diamond and RC Drilling</p> <p>Primary data was collected for drill holes using the OCRIS logging template on Panasonic Toughbook laptop computers using lookup codes. The information was sent to a database consultant for validation and compilation into a SQL database.</p> <p>Historical Drilling</p> <p>No details provided for historical drilling.</p>
	<i>Discuss any adjustment to assay data.</i>	No adjustments or calibrations were made to any assay data used in this report.
Location of data points	<i>Accuracy and quality of surveys used to locate drill holes (collar and down-hole surveys), trenches, mine workings and other locations used in Mineral Resource estimation.</i>	<p>Stavelly Project Thursday's Gossan Prospect Stavelly Minerals' Diamond and RC Drilling</p> <p>Drill collar locations were pegged before drilling and surveyed using Garmin handheld GPS to accuracy of +/- 3m. Collar surveying was performed by Stavelly Minerals' personnel. This is considered appropriate at this early stage of exploration.</p> <p>For the diamond holes, down-hole single shot surveys were conducted by the drilling contractor. Surveys were</p>

Criteria	JORC Code explanation	Commentary
		<p>conducted at approximately every 30m down-hole.</p> <p>Historical Drilling</p> <p>No details provided for drill collar locations for historical drilling.</p> <p>Downhole surveying was conducted for SNDD001 and VSTD001.</p>
	<i>Specification of the grid system used.</i>	The grid system used is GDA94, zone 54.
	<i>Quality and adequacy of topographic control.</i>	<p>At the Thursday's Gossan prospect topographic control is achieved via use of DTM developed from a 2008 airborne magnetic survey conducted by UTS contractors measuring relative height using radar techniques.</p> <p>For Stavely Minerals' exploration, the RL was recorded for each drill hole and soil sample location from the GPS. Accuracy of the GPS is considered to be within 5m.</p>
Data spacing and distribution	<i>Data spacing for reporting of Exploration Results.</i>	The drill hole spacing is project specific, refer to figures in text.
	<i>Whether the data spacing and distribution is sufficient to establish the degree of geological and grade continuity appropriate for the Mineral Resource and Ore Reserve estimation procedure(s) and classifications applied.</i>	N/A
	<i>Whether sample compositing has been applied.</i>	<p>Stavely Project</p> <p>Thursday's Gossan Prospect</p> <p>Stavely Minerals' Diamond Drilling</p> <p>Sample intervals were based on lithology but in general were 1m. No intervals were less than 0.4m or greater than 1.2m.</p> <p>Stavely Minerals' RC Drilling</p> <p>No sample compositing has been applied.</p> <p>Historical Drilling</p> <p>Sample compositing based on lithology was applied for historical drill hole SNDD001.</p> <p>3m compositing was applied for historical drill holes STAVRA077 and TGAC004.</p> <p>2m compositing was applied for historical drill hole TGAC078.</p> <p>TGRC110, TGRC136, SAC029 and SAC030 were sampled on a 1m basis.</p> <p>A combination of 1m and 2m composite sampling was applied for VSTD001.</p>
Orientation of data in relation to geological	<i>Whether the orientation of sampling achieves unbiased sampling of possible structures and the</i>	<p>Stavely Project</p> <p>Thursday's Gossan Prospect</p> <p>Stavely Minerals' Diamond and RC Drilling</p> <p>The RC and diamond drill holes were orientated at</p>

Criteria	JORC Code explanation	Commentary
structure	<i>extent to which this is known, considering the deposit type.</i>	-60° toward 070° (or 080° for SMD016) to perpendicularly intercept the sulphide rich 'D' veins within the low angle structure.
	<i>If the relationship between the drilling orientation and the orientation of key mineralised structures is considered to have introduced a sampling bias, this should be assessed and reported if material.</i>	<p>Stavely Project Thursday's Gossan Prospect Stavely Minerals' Diamond and RC Drilling</p> <p>There is insufficient drilling data to date to demonstrate continuity of mineralised domains and determine if any orientation sampling bias can be identified in the data.</p>
Sample security	<i>The measures taken to ensure sample security.</i>	<p>Stavely Project Thursday's Gossan Prospect Stavely Minerals' Diamond and RC Drilling</p> <p>Samples in closed poly-weave bags were collected from the Company's Glenthompson shed by a contractor and delivered to Hamilton from where the samples are couriered to ALS Laboratory in Orange, NSW.</p> <p>Historical Drilling</p> <p>No available data to assess security.</p>
Audits or reviews	<i>The results of any audits or reviews of sampling techniques and data.</i>	No audits or reviews of the data management system has been carried out.

Section 2 Reporting of Exploration Results

(Criteria listed in the preceding section also apply to this section.)

Criteria	JORC Code explanation	Commentary
Mineral tenement and land tenure status	<i>Type, reference name/number, location and ownership including agreements or material issues with third parties such as joint ventures, partnerships, overriding royalties, native title interests, historical sites, wilderness or national park and environmental settings.</i>	<p>Stavely Project</p> <p>The diamond drilling and RC drilling at Thursday's Gossan was located on EL4556, which forms the Stavely Project.</p> <p>The mineralisation at Thursday's Gossan is situated within exploration licence EL4556.</p> <p>The Stavely Project was purchased by Stavely Minerals (formerly Northern Platinum) from BCD Resources Limited in May 2013. Stavely Minerals hold 100% ownership of the Stavely Project tenements. The Stavely Project is on freehold agricultural land and not subject to Native Title claims.</p> <p>New Challenge Resources Pty Ltd retains a net smelter return royalty of 3% in EL4556, although there is an option to reduce this to 1% upon payment of \$500k.</p>
	<i>The security of the tenure held at the time of reporting along with any known impediments to obtaining a licence to operate in the area.</i>	<p>Stavely Project</p> <p>A retention licence, RL2017, was applied for over the majority of EL4556 in May 2014.</p> <p>The tenement is in good standing and no known impediments exist.</p>

Criteria	JORC Code explanation	Commentary
<p>Exploration done by other parties</p>	<p><i>Acknowledgment and appraisal of exploration by other parties.</i></p>	<p>Stavely Project</p> <p>Thursday's Gossan Prospect</p> <p>Exploration activity became focused on Thursday's Gossan and the Junction prospects following their discovery by Pennzoil of Australia Ltd in the late 1970s. North Limited continued to focus on Thursday's Gossan in the 1990s. North's best drill result at Thursday's Gossan came from VICT1D1 which gave 161m of 0.26% Cu from 43m, including 10m of 0.74% Cu from 43m from a supergene-enriched zone containing chalcocite.</p> <p>The tenement was optioned to CRA Exploration between 1995 and 1997. CRAE drilled several deep diamond drill holes into Thursday's Gossan, including DD96WL10, which intersected 186m from 41m of 0.15% Cu and DD96WL11, which intersected 261.7m from 38.3m of 0.13% Cu.</p> <p>EL4556 was further explored by Newcrest Operations Limited under option from New Challenge Resources Ltd between 2002 and 2004. Their main focus was Thursday's Gossan in order to assess its potential as a porphyry copper deposit. One of their better intersections came from drill hole VSTD01 on the northern edge of the deposit which gave 32m at 0.41 g/t Au and 0.73% Cu from 22m in supergene-enriched material.</p> <p>The Stavely Project was optioned to Beaconsfield Gold Mines Pty Ltd in 2006 who flew an airborne survey and undertook an extensive drilling programme focused on several prospects including Thursday's Gossan. One of their diamond drill holes at Thursday's Gossan, SNDD001, encountered zones with quartz- sulphide veins assaying 7.7m of 1.08 g/t Au and 4.14% Cu from 95.3m and 9.5m of 0.44 g/t Au and 2.93% Cu from 154.6m along silicified and sheared contacts between serpentinite and porphyritic intrusive rocks.</p> <p>Once Beaconsfield Gold Mines Pty Ltd had fulfilled their option requirements, title of EL4556 passed to their subsidiary company, BCD Metals Pty Ltd, who undertook a gravity survey and extensive drilling at prospects including Thursday's Gossan. They also commissioned a maiden Mineral Resource estimate for Thursday's Gossan.</p> <p>All work conducted by previous operators at Thursday's Gossan is considered to be of a reasonably high quality.</p>
<p>Geology</p>	<p><i>Deposit type, geological setting and style of mineralisation.</i></p>	<p>Stavely Project</p> <p>Thursday's Gossan Prospect</p> <p>The Thursday's Gossan and Junction prospects are located in the Mount Stavely Volcanic Complex (MSVC). Intrusion of volcanic arc rocks, such at the Mount Stavely Volcanic Complex, by shallow level porphyries can lead to the formation of porphyry copper ± gold ± molybdenum deposits.</p> <p>The Thursday's Gossan Chalcocite deposit (TGC) is</p>

Criteria	JORC Code explanation	Commentary
		<p>considered to be a supergene enrichment of primary porphyry-style copper mineralisation. Mineralisation is characterised by chalcopyrite, covellite and chalcocite copper sulphide mineralisation within a sericite, illite and kaolin clay alteration assemblage. Copper mineralisation is within a flat lying enriched 'blanket' of overall dimensions of 4 kilometres north-south by up to 1.5 kilometres east-west by up to 60 metres thick with an average thickness of approximately 20 metres commencing at an average depth below surface of approximately 30 metres. The majority (circa 60%) of the Mineral Resources reside within a higher grade zone of approximate dimensions of 1 kilometre x 300 metres by 35 metres thick.</p> <p>The Thursday's Gossan area hosts a major hydrothermal alteration system with copper-gold mineralisation over a 10 kilometre long corridor. The Junction porphyry target is defined by a coincident magnetic high, strong soil copper geochemistry, RAB drilling copper anomalism. Stavelly Minerals believes the technical evidence indicates there is significant porphyry copper-gold mineralisation potential at depth at Thursday's Gossan.</p>
Drill hole Information	<p><i>A summary of all information material to the understanding of the exploration results including a tabulation of the following information for all Material drill holes:</i></p> <p><i>easting and northing of the drill hole collar</i></p> <p><i>elevation or RL (Reduced Level – elevation above sea level in metres) of the drill hole collar</i></p> <p><i>dip and azimuth of the hole</i></p> <p><i>down hole length and interception depth</i></p> <p><i>hole length.</i></p>	Included in the drill hole table in the body of the report.
	<p><i>If the exclusion of this information is justified on the basis that the information is not Material and this exclusion does not detract from the understanding of the report, the Competent Person should clearly explain why this is the case.</i></p>	No material drill hole information has been excluded.
Data aggregation methods	<p><i>In reporting Exploration Results, weighting averaging techniques,</i></p>	<p>Stavelly Project</p> <p>Thursday's Gossan Prospect</p> <p>Exploration results are nominally reported where copper</p>

Criteria	JORC Code explanation	Commentary
	<i>maximum and/or minimum grade truncations (eg cutting of high grades) and cut-off grades are usually Material and should be stated.</i>	<p>results are greater than 0.1% Cu over a down-hole width of a minimum of 3m.</p> <p>No top-cutting of high grade assay results have been applied, nor was it deemed necessary for the reporting of significant intersections.</p> <p>The quoted intercept for STRC004D includes “aggregated in total” 3.9m of core loss.</p> <p>The quoted intercept for STRC005D includes “aggregated in total” 2.8m of core loss.</p> <p>The quoted intercept for SMD012 includes “aggregated in total” 7.1m of core loss.</p> <p>The quoted intercept for STRC020D includes “aggregated in total” 2.5m of core loss.</p>
	<i>Where aggregate intercepts incorporate short lengths of high grade results and longer lengths of low grade results, the procedure used for such aggregation should be stated and some typical examples of such aggregations should be shown in detail.</i>	<p>Stavelly Project</p> <p>Thursday’s Gossan Prospect</p> <p>In reporting exploration results, length weighted averages are used for any non-uniform intersection sample lengths. Length weighted average is (sum product of interval x corresponding interval grade %) divided by sum of interval length.</p> <p>Historical Drilling</p> <p>In reporting exploration results, length weighted averages are used for any non-uniform intersection sample lengths. Length weighted average is (sum product of interval x corresponding interval grade %) divided by sum of interval length.</p>
	<i>The assumptions used for any reporting of metal equivalent values should be clearly stated.</i>	No metal equivalent values are used for reporting exploration results.
Relationship between mineralisation widths and intercept lengths	<p><i>These relationships are particularly important in the reporting of Exploration Results.</i></p> <p><i>If the geometry of the mineralisation with respect to the drill hole angle is known, its nature should be reported.</i></p>	<p>Stavelly Project</p> <p>Thursday’s Gossan Prospect</p> <p>There is insufficient drilling data to date to demonstrate continuity of mineralised domains and determine the relationship between mineralisation widths and intercept lengths.</p>
	<i>If it is not known and only the down hole lengths are reported, there should be a clear statement to this effect (eg ‘down hole length, true width not known’).</i>	Refer to the Tables and Figures in the text.
Diagrams	<i>Appropriate maps and sections (with scales) and tabulations of intercepts should be included for any significant discovery being reported These should</i>	Refer to Figures in the text. A plan view of the drill hole collar locations is included.

Criteria	JORC Code explanation	Commentary
	<i>include, but not be limited to a plan view of drill hole collar locations and appropriate sectional views.</i>	
Balanced reporting	<i>Where comprehensive reporting of all Exploration Results is not practicable, representative reporting of both low and high grades and/or widths should be practiced to avoid misleading reporting of Exploration Results.</i>	Stavely Project Thursday's Gossan Prospect All copper and gold values considered to be significant for porphyry mineralisation have been reported. Some subjective judgement has been used.
Other substantive exploration data	<i>Other exploration data, if meaningful and material, should be reported including (but not limited to): geological observations; geophysical survey results; geochemical survey results; bulk samples – size and method of treatment; metallurgical test results; bulk density, groundwater, geotechnical and rock characteristics; potential deleterious or contaminating substances.</i>	All relevant exploration data is shown on figures and discussed in the text.
Further work	<i>The nature and scale of planned further work (eg tests for lateral extensions or depth extensions or large-scale step-out drilling).</i> <i>Diagrams clearly highlighting the areas of possible extensions, including the main geological interpretations and future drilling areas, provided this information is not commercially sensitive.</i>	Stavely Project Thursday's Gossan Prospect Further deep diamond drilling has been planned to test the targeted high grade copper-gold mineralisation both above and below the low-angle structure.