

18 April 2018

Quarterly Report March 2018

Ilgarari Copper Project

The Ilgarari project contains an Inferred Mineral Resource (JORC 2004) estimated to be 1,100,000 tonnes averaging 1.9% Cu (refer ASX announcement 20 November 2012). The resource is located over the historic Ilgarari copper mine workings. Please note this information was prepared and first disclosed under the JORC Code 2004. It has not been updated since to comply with the JORC Code 2012 on the basis that the information has not materially changed since it was last reported.

During the quarter the company completed its reporting obligations. No on ground exploration was undertaken over the reporting period. The company continues to review a number of proposals that have been presented in relation to the project.

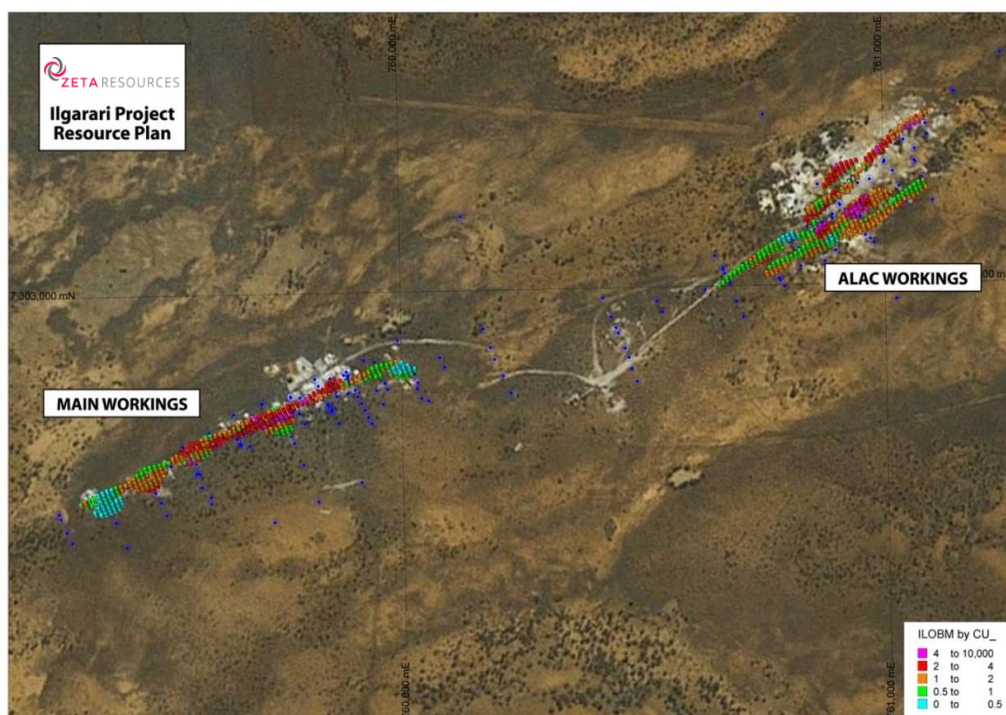


Figure 1: Ilgarari project – Resource Ore Block Model showing Main Zone and Alac Zone

The project contains a JORC 2004 copper oxide resource estimated to contain 1,100,000 tonnes averaging 1.9% Cu

Zeta Resources Limited

ARBN: 162 902 481

Registered Office: 34 Bermudiana Road, Hamilton HM 11, Bermuda | Tel: + 1 441 295 5678 | www.zetaresources.limited

Australian Registered Office: Level 2, 220 George Street, Sydney NSW 2000 | PO Box 785, Avalon NSW 2107 | Australia | Tel: +61 414 224 494

Murrin Murrin Gold Project

The Murrin Murrin Gold Project hosts the Malcolm Challenger gold deposits which contain a JORC 2012 indicated resource estimate to be 547,000 tonnes at 3.12 grams per tonne for 54,875 ounces (refer ASX announcement dated 22 January 2014).

Zeta has reviewed the work completed by GCNL over the past 12 months and is currently considering several joint venture proposals from interested parties. A site visit was completed in March and field work at the project has been limited the third-party prospecting. Future work programs are currently being planned. This work includes preliminary costings to undertake a Down Hole Electric Magnetic Surveys (DHEM) at the Nangaroo VMS prospect.

Work programs will be updated over the next quarter.

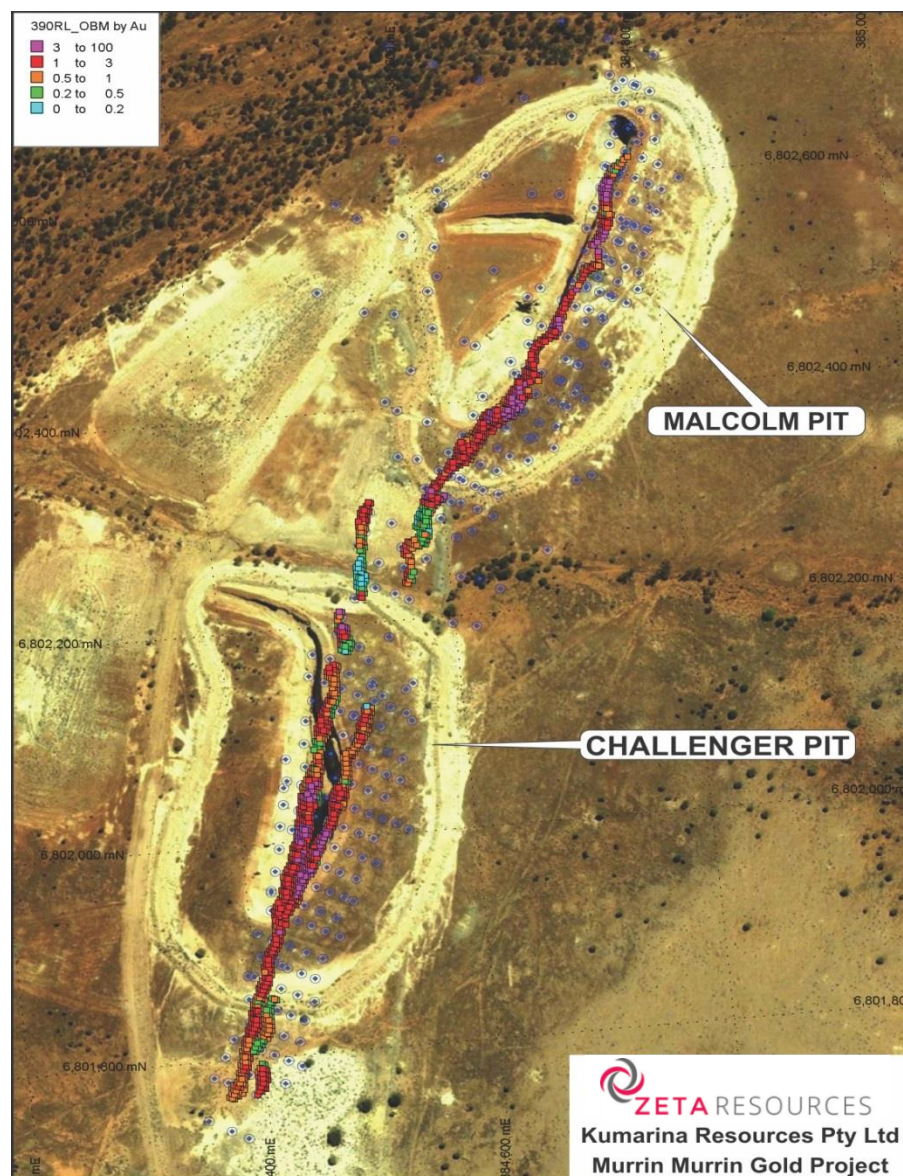


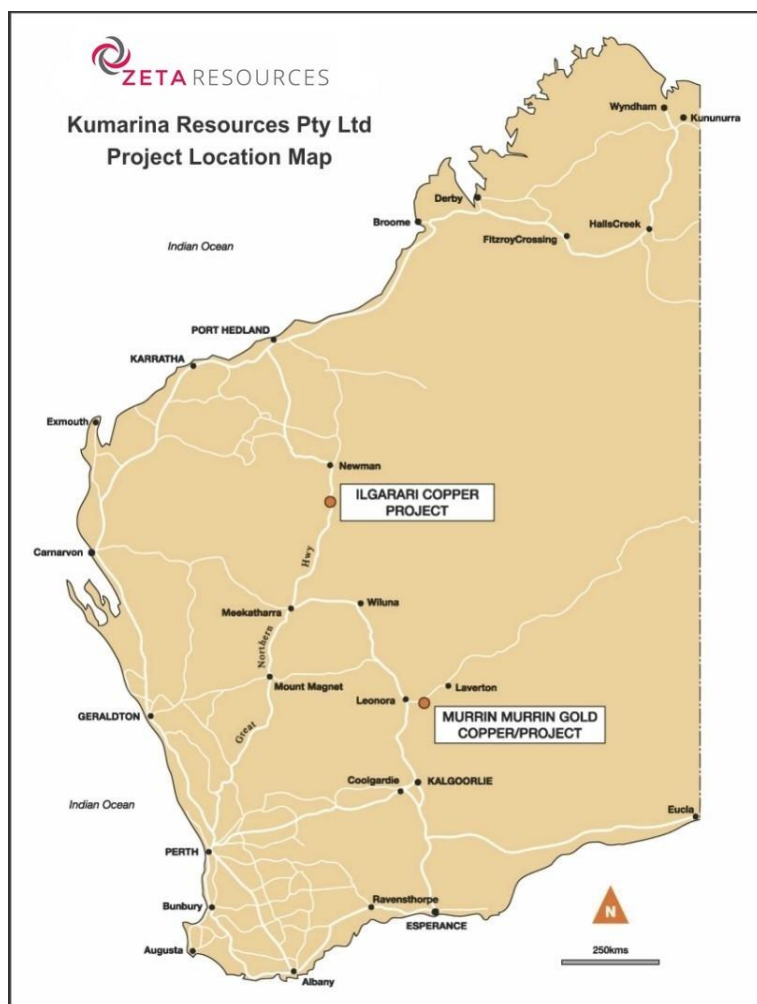
Figure 2: Malcolm Challenger resource block model projected to surface

The Malcolm Challenger deposit contains a JORC 2012 compliant resource of 547,000 tonnes averaging 3.12 grams per tonne

Competent Persons Statement

The information in this report as it relates to exploration results and geology has been compiled by Mr Tony Standish and Dr Bryan Smith. Dr Bryan Smith is a Member of the Australasian Institute of Mining and Metallurgy and is a self-employed consultant. Mr Tony Standish is a member of The Australasian Institute of Geoscientists and an employee with Eureka Geological Services. Mr Tony Standish and Dr Smith have sufficient experience which is relevant to the style of mineralisation and type of deposit under consideration and to the activity which they have undertaken to qualify as Competent Persons as defined in the 2012 Edition of the Australian Code for Reporting of Exploration Results, Mineral Resources and Ore Reserves (JORC Code). Mr Tony Standish and Dr Smith consent to the inclusion in the report of the matters based on information provided in the form and context in which it appears.

The resource estimates in this document have been made by Mr Simon Coxhell (Member of the Australasian Institute of Mining and Metallurgy) who is a consultant employed by Cox Rocks Pty Ltd. Mr Coxhell has sufficient experience which is relevant to the style of mineralisation and type of deposit under consideration and to the activity which he has undertaken to qualify as a Competent Person as defined in the 2012 Edition of the Australian Code for Reporting of Exploration Results, Mineral Resources and Ore Reserves (JORC Code). Mr Coxhell consents to the inclusion in the report of the matters based on information provided in the form and context in which it appears.



Kumarina Tenement Schedule

Project	Number	Ownership
Ilgarari	E52/2274	100%
Eulaminna	M39/0371	Gold & Base Rights
Eulaminna	M39/0372	Gold & Base Rights
Murrin Murrin	M39/0397	100%
Murrin Murrin	M39/0398	100%
Murrin Murrin	M39/0399	100%
Murrin Murrin	M39/0400	100%
Murrin Murrin	M39/1068	100%
Murrin Murrin	P39/5230	100%
Murrin Murrin	P39/5231	100%
Murrin Murrin	P39/5232	100%
Murrin Murrin	P39/5233	100%
Murrin Murrin	P39/5234	100%
Murrin Murrin	P39/5235	100%
Murrin Murrin	P39/5236	100%
Murrin Murrin	P39/5237	100%
Murrin Murrin	P39/5238	100%