

Artemis Resources Limited
ARBN: 80 107 051 749

Suite 1, 11 Ventnor Avenue,
West Perth, WA
Australia, 6005

PO Box 1291
West Perth, WA
Australia, 6872

Phone: +61 8 6319 0000
Email:
info@artemisresources.com.au
Website:
artemisresources.com.au

Directors:

Executive Chairman
David Lenigas

Executive Directors
Edward Mead
Alex Duncan-Kemp

Non-Executive Director:
Sheikh Maktoum Hasher al
Maktoum

Company Secretary:
Guy Robertson

Corporate Information
ASX Code: ARV



Bulk Sampling Of 47K Patch Conglomerate Gold Approved - Karratha, Western Australia -

Highlights:

- DMIRS approvals allow commencement of exploration.
- 9,600 tonne “excess tonnage” approval granted by DMIRS.
- 1.282 kg of gold nuggets recovered from shallow surface rehabilitation works.
- Approvals previously gained to process an initial 4,500 tonne bulk sample through Artemis’ gravity gold plant located at Radio Hill.
- 47K Patch is not part of the Novo Resources Corp. Joint Venture.

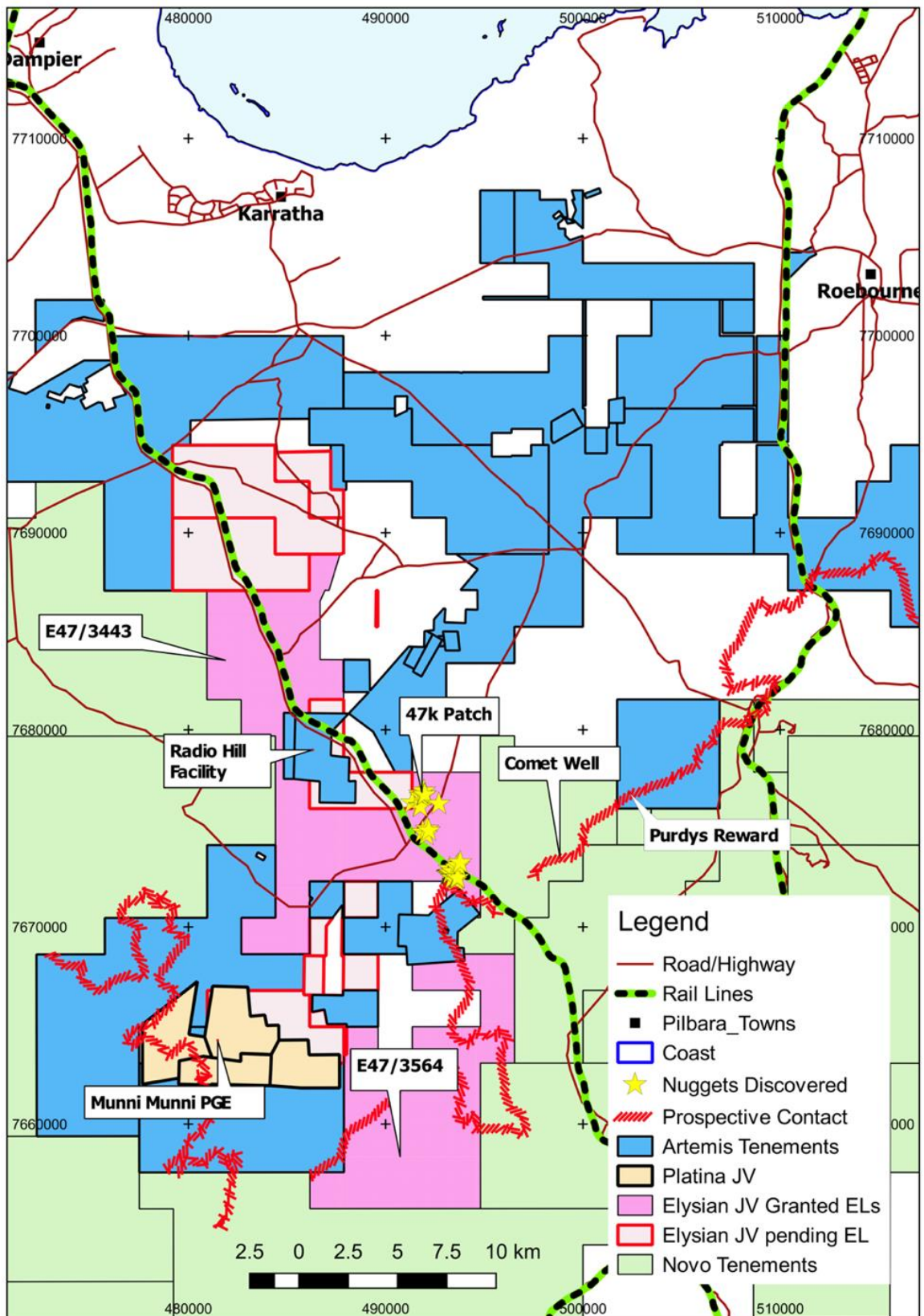
David Lenigas, Artemis’s Executive Chairman, commented; *“Getting approvals granted from the DMIRS to start serious exploration on our gold bearing 47K Patch is very exciting. We can now get to work on taking and processing big tonnage bulk samples in the 100 tonne to 1,000 tonne per sample range. This work will give us a much better understanding of gold grades and gold size distribution. In addition, we are pleased that the CSIRO have now started working with Artemis on 47 Patch and its surrounds.”*

Figure 1: 1,282.2 grams of gold nuggets recently recovered from 47K Patch.



Artemis Resources Limited (“Artemis” or “the Company”) (ASX: ARV) is pleased to announce that the WA Department for Mines, Industry Regulation and Safety (“DMIRS”) has today approved the Programme of Works (POW) to commence exploration on the Company’s 47K Patch (Figure 1 and 3) gold bearing conglomerates located on recently approved tenement E47/3443, which is located about 30km south of Karratha in the Pilbara Region of Western Australia.

Figure 2: Location 47K Patch within Exploration Licences E47/3443



In addition, the DMIRS has approved a 9,600 tonne excess tonnage permit, which will allow Artemis to take 4,500 tonnes to the Company's nearby Radio Hill plant site to process through the gravity plant, which is now permitted to treat this tonnage.

The bulk sampling and processing programme will be managed by an independent group to report on recovered gold, tailings grade and overall head grade of the bulk samples.

Earth moving equipment is already on site at 47K Patch and bulk sample locations will start to be identified over the next week. The contract crushing plant has been ordered to mobilise and processing of bulk samples is will commence at Radio Hill when samples arrive from 47K Patch.

Gold Nuggets Recovered from 47K Patch:

During rehabilitation work of previous prospector activity, Artemis has recovered 1,282.2 grams of gold (See Table 2 for Location). The rehabilitation work was completed to place the project back to original condition and profile before further ground disturbances occur.

The gold nuggets were recovered from one small 20 metre by 6 metre by 1.5 metre deep area, which was the focus of prospectors over the previous 2 years.

The style of mineralisation is yet to be determined and is thought to be paleoplacer or eluvial. The mineralisation style is part of the CSIRO research programme which is underway.

CSIRO Research in to Conglomerate Gold Mineralisation

A field trip by CSIRO with Ed Mead was completed between the 22nd - 28th March and was the start of a research programme into the formation of conglomerate and paleoplacer gold. The programme is focused on 47K Patch, with site visits to Purdy's Reward and other areas with conglomerates and sedimentary sequences as part of field orientation.

CONTACTS:

For further information on this update or the Company generally, please visit our website at www.artemisresources.com.au or contact:

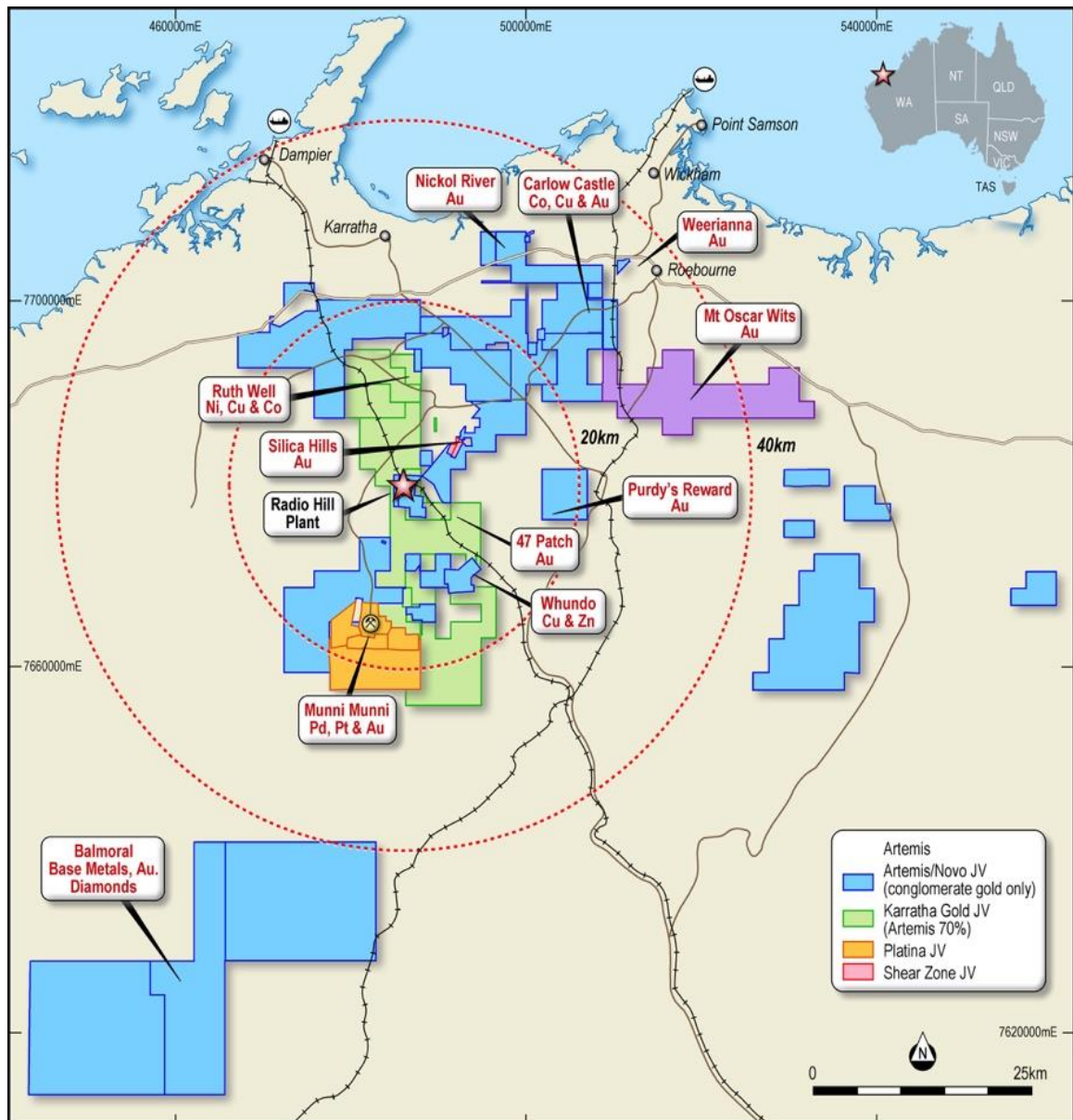
Investors / Shareholders

Edward Mead
Executive Director
Telephone: +61 407 445 351
Email: Ed.Mead@artemisresources.com.au

Media Advisor / Chapter One Advisors

David Tasker
Telephone: +61 433 112 936
Email: dtasker@chapteroneadvisors.com.au

Figure 3: Artemis' Tenements in the Karratha Area



COMPETENT PERSONS STATEMENT:

The information in this document that relates to Exploration Results and Exploration Targets is based on information compiled or reviewed by Edward Mead, who is a Member of the Australasian Institute of Mining and Metallurgy. Mr Mead is a Director of Artemis Resources Limited and is a consultant to the Company and is employed by Doraleda Pty Ltd. Mr Mead has sufficient experience that is relevant to the style of mineralisation and type of deposit under consideration and to the activity which he is undertaking to qualify as a Competent Person as defined in the 2012 Edition of the 'Australasian Code for Reporting of Exploration Results, Mineral Resources and Ore Reserves'. Mr Mead consents to the inclusion in the report of the matters based on his information in the form and context in which it appears.

BACKGROUND INFORMATION ON ARTEMIS RESOURCES:

Artemis Resources Limited is a resources exploration and development company with a focus on its prospective Karratha (gold, cobalt, base metals, platinum group elements and iron ore) and the Mt Clement Paulsens (gold) project in Western Australia.

Artemis owns the ~500,000tpa Radio Hill nickel, copper and cobalt mine and processing plant located 25km south of Karratha. JORC 2004 compliant resources of Gold, Nickel, Copper PGE's and Zinc, all situated within a 40km radius of the Radio Hill plant and on 1,838km² form the newly consolidated assets of Artemis Resources.

Artemis have signed Definitive Agreements with Novo Resources Corp. (“Novo”), and pursuant to the Definitive Agreements, Novo has satisfied its expenditure commitment, and earned-in to 50% of gold (and other minerals necessarily mined with gold) in conglomerate and/or paleoplacer style mineralization in Artemis’ tenements within 100km of the City of Karratha, including at Purdy’s Reward (“the Gold Rights”). The Gold Rights do not include (i) gold disclosed in Artemis’ existing (at 18 May 2017) Mineral Resources and Reserves reported in compliance with the JORC Code (2012), or (ii) gold which is not within conglomerate and/or paleoplacer style mineralization or (iii) minerals other than gold. Artemis’ Mt Oscar tenement is excluded from the Definitive Agreements.

The Definitive Agreements cover 38 tenements / tenement applications that are 100% owned by Artemis. Pursuant to Novo’s successful earn-in, three 50:50 joint ventures have been formed between Novo’s subsidiary, Karratha Gold Pty Ltd (“Karratha Gold”) and three subsidiaries of Artemis (KML No 2 Pty Ltd, Fox Radio Hill Pty Ltd, and Armada Mining Pty Ltd). The joint ventures are managed as one by Karratha Gold. Artemis and Novo will contribute to further exploration and any mining of the Gold Rights on a 50:50 basis.

FORWARD LOOKING STATEMENTS AND IMPORTANT NOTICE:

This report contains forecasts, projections and forward-looking information. Although the Company believes that its expectations, estimates and forecast outcomes are based on reasonable assumptions it can give no assurance that these will be achieved. Expectations, estimates and projections and information provided by the Company are not a guarantee of future performance and involve unknown risks and uncertainties, many of which are out of Artemis’ control. Actual results and developments will almost certainly differ materially from those expressed or implied. Artemis has not audited or investigated the accuracy or completeness of the information, statements and opinions contained in this presentation. To the maximum extent permitted by applicable laws, Artemis makes no representation and can give no assurance, guarantee or warranty, express or implied, as to, and takes no responsibility and assumes no liability for (1) the authenticity, validity, accuracy, suitability or completeness of, or any errors in or omission from, any information, statement or opinion contained in this report and (2) without prejudice to the generality of the foregoing, the achievement or accuracy of any forecasts, projections or other forward looking information contained or referred to in this report.

Investors should make and rely upon their own enquiries before deciding to acquire or deal in the Company’s securities.

Table 2: Location of gold nuggets recovered by metal detecting with a Minelab GPZ7000 from Rehabilitation of prospector activity.

Site	East	North
47 K Patch	0491908	7676175

JORC Code, 2012 Edition – Table 1

Section 1 Sampling Techniques and Data

(Criteria in this section apply to all succeeding sections.)

Criteria	JORC Code explanation	Commentary
Sampling techniques	<ul style="list-style-type: none"> Nature and quality of sampling (eg cut channels, random chips, or specific specialised industry standard measurement tools appropriate to the minerals under investigation, such as down hole gamma sondes, or handheld XRF instruments, etc.). These examples should not be taken as limiting the broad meaning of sampling. Include reference to measures taken to ensure sample representivity and the appropriate calibration of any measurement tools or systems used. Aspects of the determination of mineralisation that are Material to the Public Report. In cases where 'industry standard' work has been done this would be relatively simple (eg 'reverse circulation drilling was used to obtain 1 m samples from which 3 kg was pulverised to produce a 30 g charge for fire assay'). In other cases more explanation may be required, such as where there is coarse gold that has inherent sampling problems. Unusual commodities or mineralisation types (eg submarine nodules) may warrant disclosure of detailed information. 	<ul style="list-style-type: none"> A metal detector was used to identify and recover gold nuggets within the near surface profile, from a small localised area based around coordinates reported in the announcement. The area of 20 metres by 6 metres by 1.5 metres depth was rehabilitated by loosening the surface with an excavator and then re profiling back to the original surface. The nuggets were then hand dug. Total weight of nuggets is 1,1282.2 grams.
Drilling techniques	<ul style="list-style-type: none"> Drill type (eg core, reverse circulation, open-hole hammer, rotary air blast, auger, Bangka, sonic, etc.) and details (eg core diameter, triple or standard tube, depth of diamond tails, face-sampling bit or other type, whether core is oriented and if so, by what method, etc.). 	<ul style="list-style-type: none"> Drilling not being reported
Drill sample recovery	<ul style="list-style-type: none"> Method of recording and assessing core and chip sample recoveries and results assessed. Measures taken to maximise sample recovery and ensure representative nature of the samples. Whether a relationship exists between sample recovery and grade and whether sample bias may have occurred due to preferential loss/gain of fine/coarse material. 	<ul style="list-style-type: none"> Not drilling results.
Logging	<ul style="list-style-type: none"> Whether core and chip samples have been geologically and geotechnically logged to a level of detail to support appropriate Mineral Resource estimation, mining studies and metallurgical studies. Whether logging is qualitative or quantitative in nature. Core (or costean, channel, etc.) photography. The total length and percentage of the relevant intersections logged. 	<ul style="list-style-type: none"> Detecting sites were gps located.
Sub-sampling	<ul style="list-style-type: none"> If core, whether cut or sawn and whether quarter, half or all core taken. 	<ul style="list-style-type: none"> No sub sampling as no drilling related samples.

Criteria	JORC Code explanation	Commentary
techniques and sample preparation	<ul style="list-style-type: none"> • If non-core, whether riffled, tube sampled, rotary split, etc. and whether sampled wet or dry. • For all sample types, the nature, quality and appropriateness of the sample preparation technique. • Quality control procedures adopted for all sub-sampling stages to maximise representivity of samples. • Measures taken to ensure that the sampling is representative of the in situ material collected, including for instance results for field duplicate/second-half sampling. • Whether sample sizes are appropriate to the grain size of the material being sampled. 	
Quality of assay data and laboratory tests	<ul style="list-style-type: none"> • The nature, quality and appropriateness of the assaying and laboratory procedures used and whether the technique is considered partial or total. • For geophysical tools, spectrometers, handheld XRF instruments, etc., the parameters used in determining the analysis including instrument make and model, reading times, calibrations factors applied and their derivation, etc. • Nature of quality control procedures adopted (eg standards, blanks, duplicates, external laboratory checks) and whether acceptable levels of accuracy (i.e. lack of bias) and precision have been established. 	<ul style="list-style-type: none"> • Not Analysed
Verification of sampling and assaying	<ul style="list-style-type: none"> • The verification of significant intersections by either independent or alternative company personnel. • The use of twinned holes. • Documentation of primary data, data entry procedures, data verification, data storage (physical and electronic) protocols. • Discuss any adjustment to assay data. 	<ul style="list-style-type: none"> • No verification sampling has been undertaken.
Location of data points	<ul style="list-style-type: none"> • Accuracy and quality of surveys used to locate drill holes (collar and down-hole surveys), trenches, mine workings and other locations used in Mineral Resource estimation. • Specification of the grid system used. • Quality and adequacy of topographic control. 	<ul style="list-style-type: none"> • Grid system used for sampling is MGA 94 (Zone 50K)
Data spacing and distribution	<ul style="list-style-type: none"> • Data spacing for reporting of Exploration Results. • Whether the data spacing and distribution is sufficient to establish the degree of geological and grade continuity appropriate for the Mineral Resource and Ore Reserve estimation procedure(s) and classifications applied. • Whether sample compositing has been applied. 	<ul style="list-style-type: none"> • Randomly spaced metal detecting within a small defined area of 20m x 6 m x 1.5 m deep. • Not for ore resource estimation. • No compositing applied.
Orientation of data in relation to geological structure	<ul style="list-style-type: none"> • Whether the orientation of sampling achieves unbiased sampling of possible structures and the extent to which this is known, considering the deposit type. • If the relationship between the drilling orientation and the orientation of key 	<ul style="list-style-type: none"> • No orientation of data. All surface sampling.

Criteria	JORC Code explanation	Commentary
	<i>mineralised structures is considered to have introduced a sampling bias, this should be assessed and reported if material.</i>	
Sample security	<ul style="list-style-type: none"> The measures taken to ensure sample security. 	<ul style="list-style-type: none"> The gold specimens remain in the possession of the Artemis.
Audits or reviews	<ul style="list-style-type: none"> The results of any audits or reviews of sampling techniques and data. 	<ul style="list-style-type: none"> No audit of rock sampling data has been completed to date

Section 2 Reporting of Exploration Results

(Criteria listed in the preceding section also apply to this section.)

Criteria	JORC Code explanation	Commentary
Mineral tenement and land tenure status	<ul style="list-style-type: none"> Type, reference name/number, location and ownership including agreements or material issues with third parties such as joint ventures, partnerships, overriding royalties, native title interests, historical sites, wilderness or national park and environmental settings. The security of the tenure held at the time of reporting along with any known impediments to obtaining a licence to operate in the area. 	<ul style="list-style-type: none"> See map elsewhere in this report for locations. The granted tenement E47/3443 is good standing.
Exploration done by other parties	<ul style="list-style-type: none"> Acknowledgment and appraisal of exploration by other parties. 	<ul style="list-style-type: none"> Historical exploration data is currently being collated. Extensive exploration was undertaken by Fox Resources and other parties for base metals.
Geology	<ul style="list-style-type: none"> Deposit type, geological setting and style of mineralisation. 	<ul style="list-style-type: none"> Morphology of gold mineralisation is unknown, assumed to potentially be paleo-placer or alluvial. Area has potential for Conglomerate gold occurrences.
Drill hole Information	<ul style="list-style-type: none"> A summary of all information material to the understanding of the exploration results including a tabulation of the following information for all Material drill holes: <ul style="list-style-type: none"> easting and northing of the drill hole collar elevation or RL (Reduced Level – elevation above sea level in metres) of the drill hole collar dip and azimuth of the hole down hole length and interception depth hole length. If the exclusion of this information is justified on the basis that the information is not Material and this exclusion does not detract from the understanding of the report, the Competent Person should clearly explain why this is the case. 	<ul style="list-style-type: none"> No drill holes being reported.
Data aggregation methods	<ul style="list-style-type: none"> In reporting Exploration Results, weighting averaging techniques, maximum and/or minimum grade truncations (eg cutting of high grades) and cut-off grades are usually Material and should be stated. Where aggregate intercepts incorporate short lengths of high 	<ul style="list-style-type: none"> No aggregation methods used.

Criteria	JORC Code explanation	Commentary
	<p><i>grade results and longer lengths of low grade results, the procedure used for such aggregation should be stated and some typical examples of such aggregations should be shown in detail.</i></p> <ul style="list-style-type: none"> <i>The assumptions used for any reporting of metal equivalent values should be clearly stated.</i> 	
<p>Relationship between mineralisation widths and intercept lengths</p>	<ul style="list-style-type: none"> <i>These relationships are particularly important in the reporting of Exploration Results.</i> <i>If the geometry of the mineralisation with respect to the drill hole angle is known, its nature should be reported.</i> <i>If it is not known and only the down hole lengths are reported, there should be a clear statement to this effect (eg 'down hole length, true width not known').</i> 	<ul style="list-style-type: none"> No mineralisation widths are being reported.
<p>Diagrams</p>	<ul style="list-style-type: none"> <i>Appropriate maps and sections (with scales) and tabulations of intercepts should be included for any significant discovery being reported These should include, but not be limited to a plan view of drill hole collar locations and appropriate sectional views.</i> 	<ul style="list-style-type: none"> Appropriate maps and sections are available in the body of this announcement.
<p>Balanced reporting</p>	<ul style="list-style-type: none"> <i>Where comprehensive reporting of all Exploration Results is not practicable, representative reporting of both low and high grades and/or widths should be practiced to avoid misleading reporting of Exploration Results.</i> 	<ul style="list-style-type: none"> Reporting of results in this report is considered balanced.
<p>Other substantive exploration data</p>	<ul style="list-style-type: none"> <i>Other exploration data, if meaningful and material, should be reported including (but not limited to): geological observations; geophysical survey results; geochemical survey results; bulk samples – size and method of treatment; metallurgical test results; bulk density, groundwater, geotechnical and rock characteristics; potential deleterious or contaminating substances.</i> 	<ul style="list-style-type: none"> No other significant exploration work has been done by Artemis.
<p>Further work</p>	<ul style="list-style-type: none"> <i>The nature and scale of planned further work (eg tests for lateral extensions, depth extensions or large-scale step-out drilling).</i> <i>Diagrams clearly highlighting the areas of possible extensions, including the main geological interpretations and future drilling areas, provided this information is not commercially sensitive.</i> 	<ul style="list-style-type: none"> Plans are to undertake follow-up mapping and sampling with geochemical sampling, trenching, and drilling with complementary metal detecting in appropriate areas. A CSIRO research programme is underway in to the potential source of gold mineralisation and in to the geological setting.