

## ASX: LVH MARKET RELEASE

### LiveHire integrates with Google Cloud Job Discovery in Australia.

**26 April 2018 | Melbourne, Australia**

#### **Highlights:**

- LiveHire has integrated with Google Cloud Job Discovery, providing all LiveHire Talent Community customers access to Google's search and machine learning capabilities.
- The integration with Cloud Job Discovery will support the ongoing flow of quality Talent Community Connections (TCCs) into employers LiveHire Talent Communities.
- The integration with Cloud Job Discovery, released in the past week, will power LiveHire customers' career websites.
- The integration, alongside SEEK and Indeed, links the three largest upstream sources of talent directly into clients Live Talent Communities, with seamless candidate experience.

LiveHire Limited (ASX: LVH), the Talent Community software platform providing an enterprise scale, human-cloud hiring ecosystem for entire industries, is pleased to announce it has integrated with Google Cloud Job Discovery, with Phase 1 of the integration now live in Australia, following 6 months of product integration.

Cloud Job Discovery integrates LiveHire's Talent Community Ecosystem with Google's powerful search and machine learning capabilities, enabling LiveHire-powered employers to realise improved engagement and candidate conversion into job applications and TCCs.

#### **Google Cloud Job Discovery Implementation**

Employers' career pages powered by LiveHire will be enhanced with Google's powerful search and machine learning capabilities which are expected to greatly improve the experience and relevance for visiting candidates. Results will continue to improve over time with built-in machine learning.

The Cloud Job Discovery integration is expected to bring an intelligent experience to job seekers on the LiveHire talent community career pages, by improving their search in the following ways: clearly understanding the search terms and the intent of the user; automatically identifying and correcting spelling errors; providing roles with the right seniority; recognising and translating specific and uncommon jargon; recognising industry abbreviations and acronyms; and understanding real world locations.

The integration with Job Discovery is expected to present a significant advantage for companies using the LiveHire platform to automate and optimize their proactive sourcing of quality talent even further, freeing up valuable time to focus on the human, one-to-one engagement with the qualified candidates in their Talent Pools.

### Later phases of LiveHire investment in Artificial Intelligence (AI) and Machine Learning (ML) integrations

In future implementation phases, LiveHire will continue to work to leverage Google's available AI and ML capabilities, and new developer functionalities, in all areas of the recruitment funnel, to assist in optimising LiveHire customers' recruitment activities, aiming to deliver a shorter time to hire and an optimal candidate and recruiter experience.

The potential of applying artificial intelligence and machine learning to employment related activities is enormous, and LiveHire aims to embed into the Talent Community platform the most effective technology solutions available in the market to power the best in breed productivity and collaboration platform for recruitment and candidate experience.

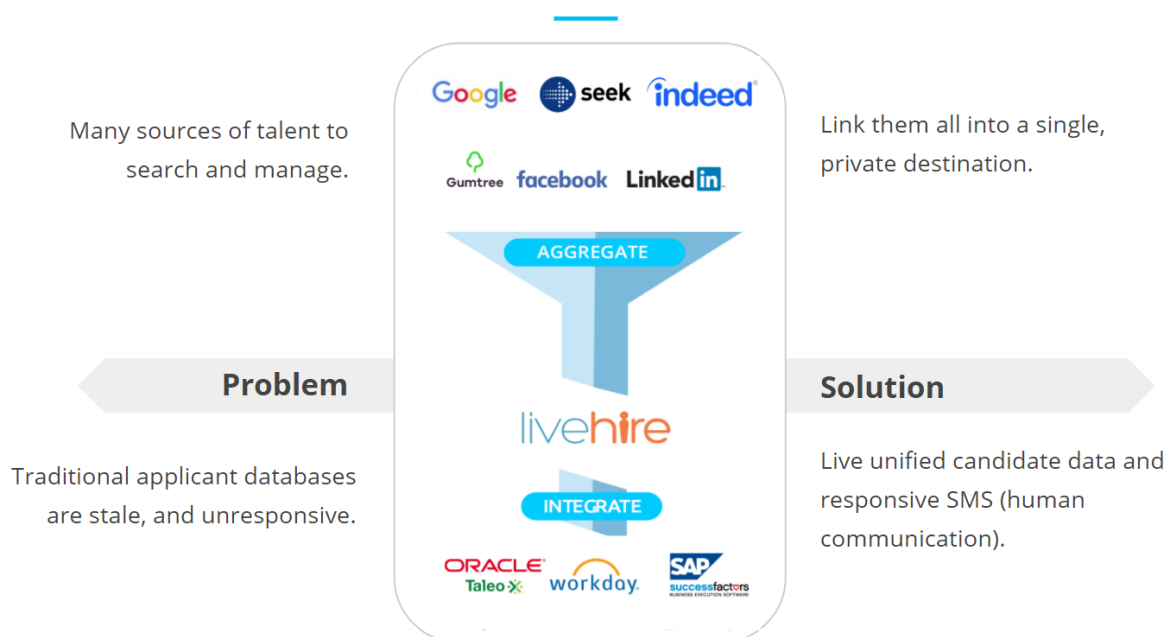
### Integrations accelerating upstream and downstream of the LiveHire ecosystem

This is a major milestone with respect to LiveHire's integration strategy, communicated since listing on the ASX in June 2016, to progressively integrate with the major global sources of talent upstream, to build Talent Communities, whilst aiming to integrate with the largest HRIS downstream to manage the flow of talent through organisations.

As a result of the three major upstream source of talent integrations now being live, LiveHire's ecosystem is likely to be extremely well positioned to scale efficiently and effectively in the future.

## The Talent Technology Landscape

The LiveHire platform has created a whole new global category of productivity and collaboration software in the Human Capital space, unifying and powering the flow of candidate data.



NOTE: Graphic representation for illustrative purposes only.

LiveHire continues to create and expand a new cloud product category focused on productivity and collaboration for human capital teams, aiming to become a single destination and unified source of data for both candidates and organisations, powering responsive human communication, and hiring agility.

As the LiveHire ecosystem and TCCs continue to expand, deep and seamless integrations play an important role both upstream to major sources of talent (SEEK, Google, Indeed, Facebook, LinkedIn, Job Boards, AI, referrals, databases) and downstream to major HRIS (Oracle, SAP, Workday).

LiveHire continues to expand its 3<sup>rd</sup> party HR tech ecosystem, with the aim of expanding its API libraries to assist 3<sup>rd</sup> party HR and recruitment software, AI and widgets, to easily integrate into the LiveHire ecosystem to provide clients with multiple choices of additional custom features, including reference checking, on-boarding, assessments, hiring manager tools, video, AI, chat bots, reporting and analytics and communication methods.

### **Note to market**

None of the information included in this announcement should be considered individually material, unless specifically stated. All figures in this announcement are provided on an unaudited basis.

### **For more information:**

Simon Hinsley - Investor Relations

[simonh@livehire.com](mailto:simonh@livehire.com) +61 401 809 653

Subscribe to LiveHire's newsletter at: <http://eepurl.com/b2EMFL>

[www.livehire.com/investor](http://www.livehire.com/investor)

### **About LiveHire**

LiveHire is a productivity and collaboration platform for talent management that delivers a proactive sourcing and internal mobility solution called Live Talent Communities. The platform makes managing the flow of talent into and through businesses seamless, delivering value through perfect visibility of existing employees, and shifting recruitment of new talent from reactive to proactive, reducing time and cost to hire, with an unrivalled candidate experience.

Founded in 2011, LiveHire is an Australian company headquartered in Melbourne, with offices also in Sydney, Brisbane and Perth. [www.livehire.com](http://www.livehire.com)

### **Disclaimer**

This announcement contains "forward-looking statements." These can be identified by words such as "may", "should", "anticipate", "believe", "intend", "estimate", and "expect". Statements which are not based on historic or current facts may be forward-looking statements. Forward-looking statements are based on:

- assumptions regarding the Company's financial position, business strategies, plans and objectives of management for future operations and development and the environment in which the Company will operate; and
- current views, expectations and beliefs as at the date they are expressed and which are subject to various risks and uncertainties.

Actual results, performance or achievements of the Company could be materially different from those expressed in, or implied by, these forward-looking statements. The forward-looking statements contained within the presentations are not guarantees or assurances of future performance and involve known and unknown risks, uncertainties and other factors, many of which are beyond the control of the Company, which may cause the actual results, performance or achievements of the Company to differ materially from those expressed or implied by forward-looking statements. For example, the factors that are likely to affect the results of the Company include general economic conditions in Australia and globally; exchange rates; competition in the markets in which the Company does and will operate; weather and

climate conditions; and the inherent regulatory risks in the businesses of the Company. The forward-looking statements contained in this announcement should not be taken as implying that the assumptions on which the projections have been prepared are correct or exhaustive. The Company disclaims any responsibility for the accuracy or completeness of any forward-looking statement. The Company disclaims any responsibility to update or revise any forward-looking statements to reflect any change in the Company's financial condition, status or affairs or any change in the events, conditions or circumstances on which a statement is based, except as required by law. The projections or forecasts included in this presentation have not been audited, examined or otherwise reviewed by the independent auditors of the Company.

You must not place undue reliance on these forward-looking statements.