

QUARTERLY ACTIVITIES REPORT

For the quarter ended 31 March 2018

BASE METAL PROJECTS, WESTERN AUSTRALIA

Metals Australia Ltd (MLS or the Company) holds an interest in two base metal projects in Western Australia (Figure 1).

The Manindi Zinc-Copper Project is located around 500 km northeast of Perth, and is being explored by MLS with a view to expanding the existing resources and examining the project's potential for lithium mineralisation.

The Company also has an interest in the Sherlock Bay Nickel-Cobalt Copper Project located in the western Pilbara region that is operated by Sabre Resources Ltd (ASX:SBR).

MANINDI ZINC PROJECT

The Manindi Project is a significant unmined zinc deposit located in the Murchison District of Western Australia, 20 km southwest of the Youanmi gold mine. The project is located on three granted mining leases.

The Manindi base metal deposit is considered to be a volcanogenic massive sulphide (VMS) zinc deposit, comprising a series of lenses of zinc-dominated mineralisation that have been folded, sheared, faulted, and intruded by later dolerite and gabbro. The style of mineralisation is similar to other base metal sulphide deposits in the Yilgarn Craton, particularly Golden Grove at Yalgoo to the west of Manindi, and Teutonic Bore-Jaguar in the Eastern Goldfields.



Figure 1 – Location of the Western Australian base metals projects.

EXPLORATION PROGRAM DURING QUARTER

Exploration at Manindi during the quarter has focussed on the lithium potential of the Project area. The Company has previously announced that significant widths of high-grade lithium-bearing pegmatites up to 25 m wide assaying up to 2.14% Li₂O occur in historical diamond drill core from the Mulgara Prospect area. In addition, limited rock chip sampling of exposed pegmatites in the Mulgari-Warabi Prospect areas has returned high-grade lithium results of up to 2.84% Li₂O. For full details, refer to Metals Australia ASX announcement dated 21 March 2017.

Additional work has shown that the area prospective for lithium-bearing pegmatites extends over a strike length of approximately 2 km (see Metals Australia announcement dated 30 January 2018). Exposures of pegmatite occur in a zone approximately 800 m wide, but interpretation of airborne magnetic images and other remote sensing images indicate that the known pegmatites may continue

under cover. The work has also identified other pegmatite exploration targets that have not been mapped at surface suggesting there remains significant potential below the shallow cover.

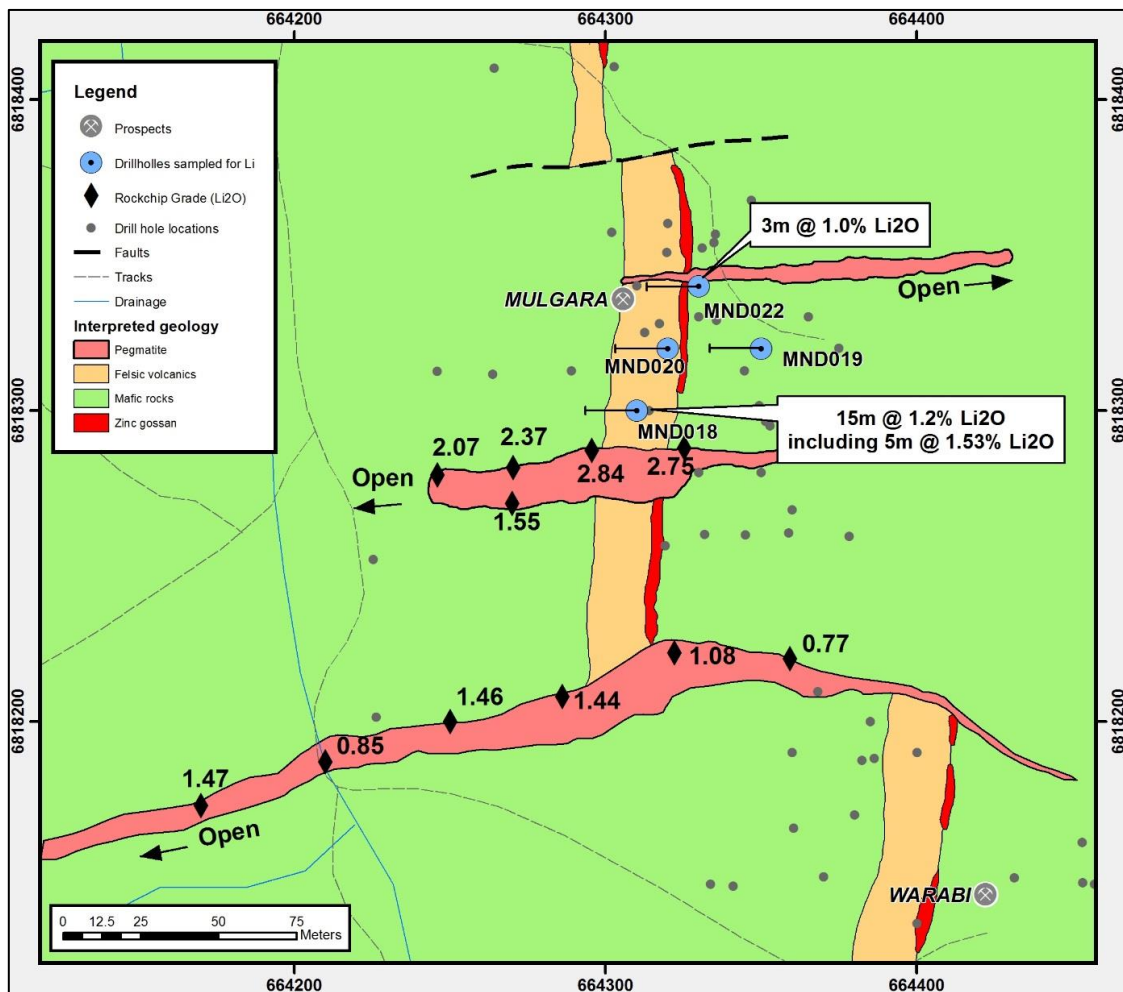


Figure 2 – Interpreted geology of the Mulgara-Warabi Prospect areas showing pegmatite intrusions, rock chip sample locations and grades, historic drill holes sampled for lithium, historic drill hole collar positions and outcropping zinc mineralisation (shown in red) on the felsic-mafic contact.

MLS has engaged metallurgical consultancy NAGROM to complete a preliminary metallurgical testing program on the lepidolite mineralisation-ore at the Manindi Project (see Metals Australia ASX announcement dated 13 April 2018). The Company has also engaged lithium processing and metallurgy expert, Noel O'Brien of Trinol, to oversee the program and provide technical recommendations to the Company.

The testing program will include an initial sequence of heavy liquid separation (HLS) testing, mineralogy profiling, gravity response testing, XRD analysis and magnetic separation / flotation testing.

Samples of split drill core from drill holes MND018 and MND022 (see Figure 2) containing lepidolite-bearing pegmatite were selected for the purposes of the preliminary metallurgical program. A total sample size across the two holes weighing approximately 51kg was delivered to NAGROM. Results of the testing are expected during the next quarter.

The Company is also planning a reverse circulation (RC) percussion drilling program targeting the mineralised pegmatite dykes that have been mapped and sampled at surface (Figure 2). The program

will consist of up to 20 drill holes (approximately 1,200 m) and will complement the historic diamond drilling at the Mulgara Prospect, which intersected wide zones of high-grade lithium-bearing pegmatites but was not optimally oriented to test the interpreted strike of the pegmatite dykes. Drilling in this program will focus specifically on defining the grade, width and continuity of the lepidolite-bearing pegmatite dykes.

Permits for the drilling are expected to be granted to the Company in May 2018, following which the Company will complete the mobilisation of the drilling crew and technical personnel to the field. The drilling program will have a duration of approximately 2 weeks.

SHERLOCK BAY PROJECT

The Sherlock Bay Project comprises a mining lease (M45/567) and two exploration licences (E47/1769 and E47/1770) located in the western Pilbara. The mining lease contains the Sherlock Bay nickel-cobalt copper deposit. MLS hold a 4.5% interest in the project through a restructure of the ownership that was reported in ASX announcement dated 29 January 2018.

The Project is managed by Sabre Resources Ltd who hold a 70% interest. Metals Australia's interest in the project is 'free-carried' through to the completion of a bankable feasibility study and the decision to commence commercial mining.

Field visits were completed to the Project area during the quarter. Sabre Resources Ltd report that current activities include validation of the drilling database and compilation of the extensive digital data and hardcopy information for the Sherlock Bay deposit.

URANIUM EXPLORATION NAMIBIA

MILE 72 PROJECT

Metals Australia holds 100% of the Mile 72 Uranium Project, located near Henties Bay on the west coast of Namibia. The project comprises a single exclusive prospecting license (EPL3308) and is considered prospective for calcrete and gypcrete hosted uranium as well as alaskite hosted uranium.

The Company is considering its options in respect of the project.

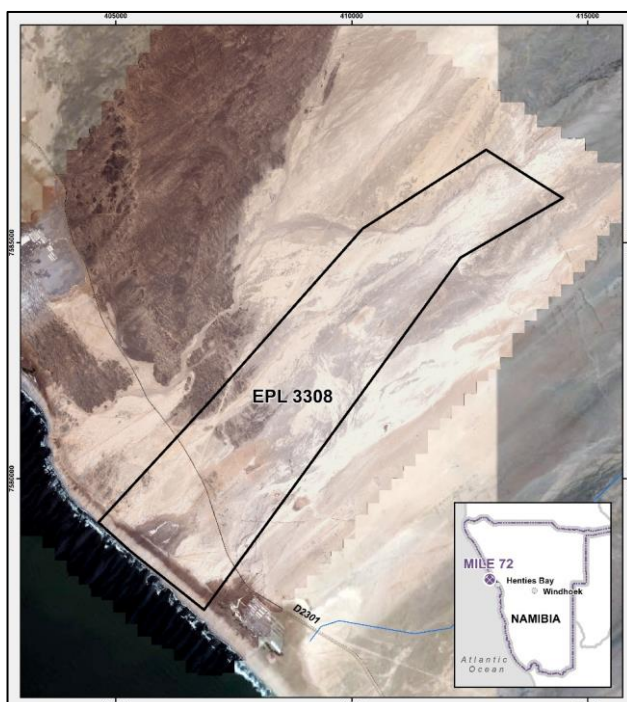


Figure 3 – Location map of the Mile 72 Uranium Project in Namibia.

GRAPHITE, COBALT AND LITHIUM PROJECTS IN QUEBEC, CANADA

Metals Australia, through its wholly owned subsidiary Quebec Lithium Limited (QLL) owns a 100% interest in the following exploration projects, located in Quebec, Canada:

- Lac Rainy Graphite Project
- Lac du Marcheur Cobalt Project
- Lac La Motte Lithium Project
- Lac La Corne Lithium Project
- Lacourciere-Darveau Lithium Project

Limited work was completed during the current quarter due to winter conditions. A diamond drilling program proposed for the Lac Rainy Project was deferred in favour of constructing road access to the prospective areas identified by previous exploration and undertaking detailed sampling to gain further information regarding the grade and continuity of known graphite mineralisation.

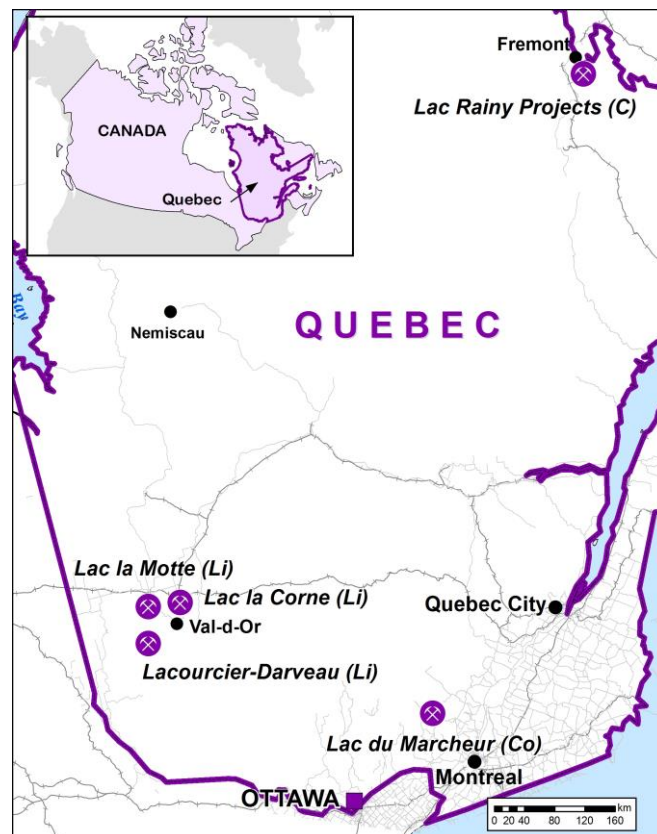


Figure 4 – Location map of projects in Quebec, Canada

LAC RAINY GRAPHITE PROJECT

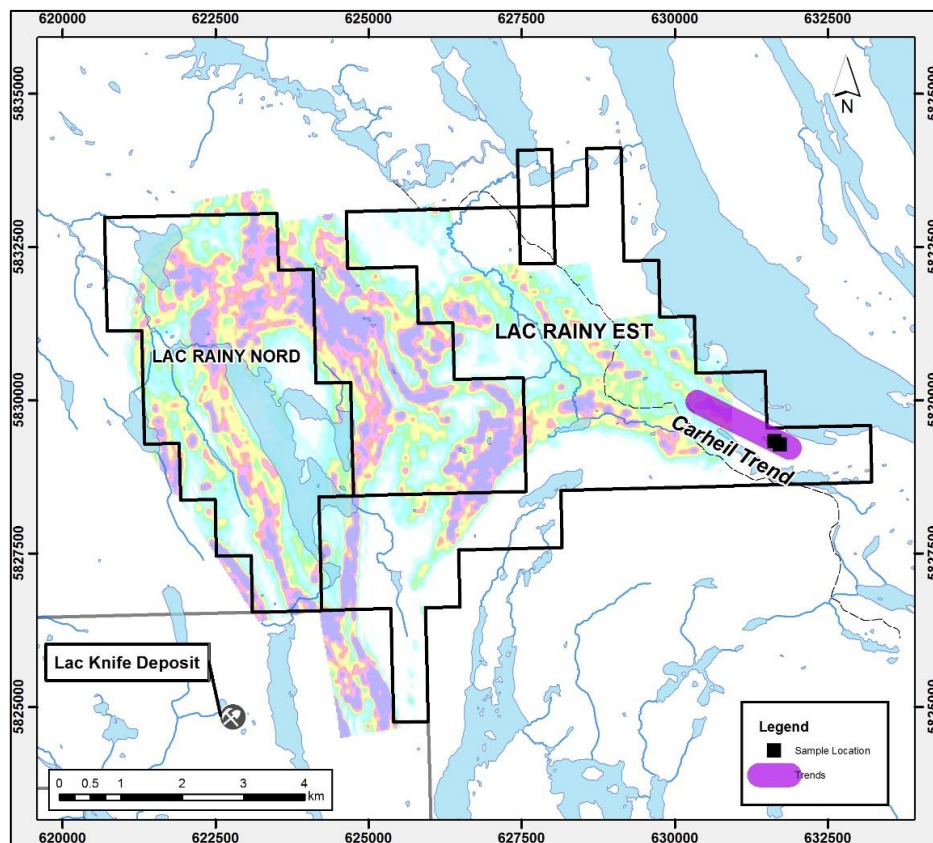
The Lac Rainy Graphite Project is located in one of the premier graphite geological regions of Quebec. The project is located approximately 22 km south-west of the historic mining town of Fermont and 260 km north-northeast of the city of Sept-Iles. The Lac Rainy Project is approximately 15 km east of Route 389, a paved highway which travels north to Fermont. The Lac Rainy project consists of a contiguous landholding of 88 mineral claims covering an area of approximately 45.5 km² (Figure 5).

GEOLOGY AND MINERALISATION

Within the Lac Rainy Graphite Project, the graphite is hosted in biotite-quartz-feldspar paragneiss and schist of the Nault Formation, in association with iron formations of the Wabush Formation. High grade metamorphism and folding associated with the Grenvillian orogeny has resulted in the formation of important concentrations of graphite dominated by value-enhanced large flakes.

The Project is located adjacent to the Lac Knife Property, which hosts the Lac Knife Graphite Deposit owned by Focus Graphite Inc. (less than 4 km south-west of the Project) and hosts a Measured and Indicated Resource of 13.6 Mt @ 14.95% Cg and an Inferred Resource of 0.8 Mt @ 13.90% Cg at a 3.0% Cg cut-off (refer Focus Graphite TSX-V market announcement dated 6 March 2017).

The high-grade Lac Carheil Prospect is located less than 200 m from the southeast licence boundaries of the Project area. High grade graphite samples at Lac Carheil include 35.49% Cg and 40.67% Cg. The close proximity of numerous high grade graphitic carbon results at nearby occurrences highlights the strong potential for further graphite mineralisation to be identified at the Lac



Rainy Graphite Project.

Figure 5 – Claim boundaries for the Lac Rainy Nord and Lac Rainy Est Graphite Project overlaid with the results of the recent airborne geophysical program

EXPLORATION PROGRAM DURING QUARTER

After a review of cost and logistical requirements, a planned diamond drilling program at the Carheil Prospect was deferred. An alternative plan to construct road access to the area that can facilitate further overburden stripping and detailed channel sampling is currently being permitted. Drilling will be completed after the field works has been undertaken.

This exploration plan will allow a much more detailed assessment of the mineralised sequence and evaluation of the grade and continuity of graphite mineralisation. The proposed drilling program will be undertaken pending the outcome of the results of further sampling.

LAC DU MARCHEUR COBALT PROJECT

The Company is exploring the Lac du Marcheur Cobalt Project in the cobalt endowed Laurentian region of southern Quebec. The Lac du Marcheur Cobalt Project consists of two discrete contiguous groups of claims, being the North Block and the South Block which are approximately 1 kilometre apart, totalling 1,780 hectares or 17.8 km². They form a north-south trending corridor that extends south from the village of Notre-Dame-de-la-Merci.

The Project is made up of 36 granted mineral claims and is located approximately 70 kilometres northeast of Montreal and is easily accessible via a paved highway (Provincial Route 125) and a network of secondary roads. The favourable location of the project means that exploration and mobilisation costs will be lower in comparison to more remote projects. It is less than 90 minutes by car from Montreal.

Previous work in the area includes geological mapping, geochemical sampling and an airborne EM survey carried out by the Ministère de l'Énergie et des Ressources Naturelles and the Geological Survey of Canada.

GEOLOGY AND MINERALISATION

Geologically, the rocks of the Lac du Marcheur Cobalt Project are within the Grenville Province of the Canadian Shield. The project is underlain by the same north-south trending package of gabbroic to anorthositic rocks (Morin Intrusive Suite) that underlie the CBLT Ltd's 100% owned Chilton Cobalt Project.

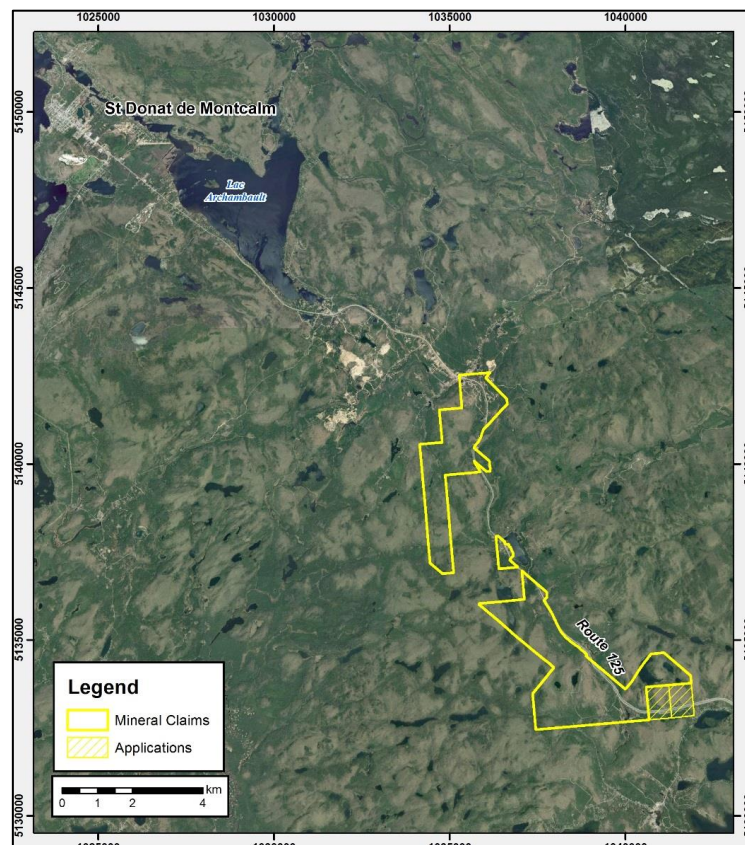


Figure 6 – Location of the Lac du Marcheur Cobalt Project claim blocks

The Lac du Marcheur Cobalt Project contains a number of cobalt-copper-nickel showings and is on strike with a number of other documented high grade cobalt-copper-nickel occurrences. The mineralisation is in the form of disseminated sulphides and stockworks (veins and veinlets) of massive sulphides filling fractures in the anorthositic gabbros, commonly at or near contacts with quartzites.

According to the Ministère de l'Énergie et des Ressources Naturelles ("MERNQ") database (<http://sigeom.mines.gouv.qc.ca>), these various local showings, with variable amounts of pyrrhotite, pentlandite and chalcopyrite mineralisation have returned assays of up to 2,500 ppm (0.25%) cobalt, 1.11% copper, 1.23% nickel and 12.7 g/t silver in surface grab and trench samples associated with gabbros, gabbroic anorthosites and quartzites.

EXPLORATION PROGRAM DURING QUARTER

No fieldwork was completed during the March quarter due to winter conditions. A work program for the summer season is being prepared. Two further claim applications became active during the quarter.

LAC LA MOTTE LITHIUM PROJECT

The Lac La Motte Lithium Project is located in the Abitibi Greenstone Belt of Quebec approximately 25 km northwest of the historic mining town of Val d'Or and 400 km northwest of Montreal. The Lac La Motte project consists of a contiguous landholding of 88 mineral claims covering an area of approximately 48.1 km². Access to the Lac La Motte project from Val d'Or is easily gained via paved Highway 111 and a number of all-weather gravel roads.

GEOLOGY AND MINERALISATION

The Lac La Motte Lithium project represents a significant landholding surrounded by known lithium deposits and occurrences, as well as known beryl occurrences (Figure 7).

Within the Lac La Motte project, numerous pegmatites hosting spodumene and varying from 1.6m to 6m in width intrude diorites, monzonites and metasediments of the Caste Group that are in contact with the basalts of the Lower Malartic Group. The lithium mineralisation occurs mainly in medium to large spodumene crystals.

The Jilin owned Quebec Lithium Mine which is located in the northeast part of the region less than 7 km northeast of the Lac La Motte project, contains a measured and indicated mineral resource of 33.24 Mt at 1.19% Li₂O and an inferred mineral resource of 13.76 Mt at 1.21% Li₂O (NI 43-101 compliant), according to a technical report filed by Canada Lithium Corp. on 12 October 2012 (refer www.rb-e.com/i/pdf/Quebec_Lithium_Mineral_Resources_and_Reserves_Estimates.pdf)

The Lac La Motte project is located less than 1 km east of the Authier lithium deposit which has a reported JORC Measured, Indicated and Inferred resource of 13.74Mt @ 1.07% Li₂O (refer to http://www.sayonamining.com.au/PDF/ASX23Nov16_Authier%20Expanded%20JORC.pdf).

The Duval Lithium deposit, which contains high grade lithium mineralisation, is located less than 1.5 km north-northwest of the Lac La Motte licence boundaries. The Baillarge-Ouest lithium-tantalum deposit is located less than 500 metres east of the Lac La Motte licence boundaries and contains spodumene-hosted lithium in pegmatite outcrop grading 1.94% Li₂O.

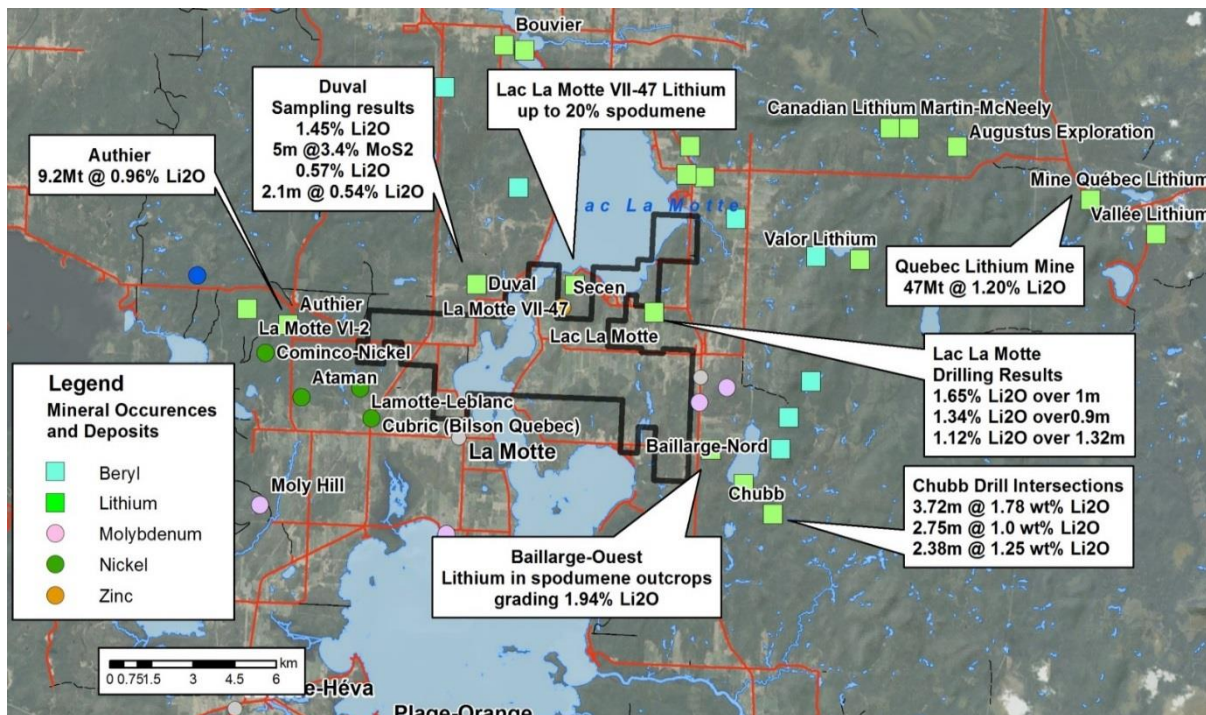


Figure 7 – Lac La Motte Project location map. Green squares represent lithium deposits.

EXPLORATION PROGRAM DURING QUARTER

No fieldwork was completed during the March quarter due to winter conditions. Statutory work assessment reports were submitted to the government and subsequently accepted. Two mineral claims were renewed and a review of the most prospective areas within the claim block was completed.

LAC LA CORNE LITHIUM PROJECT

The Lac La Corne Lithium Project is located approximately 20 km north of the historic mining town of Val d'Or and 400 km northwest of Montreal. The project comprises a contiguous landholding of 87 mineral claims totalling approximately 49.8 km². Access from Val d'Or is gained via paved Highway 111 and a number of all-weather gravel roads.

GEOLOGY AND MINERALISATION

The Lac La Corne Lithium Project is a significant landholding surrounded by known lithium deposits and occurrences, as well as beryl occurrences (Figure 8). The region is dominated by quartz monzodiorite and metasomatized quartz diorite (tonalite) of the La Corne plutonic complex. A swarm of spodumene-rich granitic pegmatite dykes intrude fractures and small faults within the plutonic rocks.

The LCT pegmatite dykes are as much as 6m thick and are generally crudely zoned, some having quartz cores and border zones of aplite. The granitic pegmatites are composed of quartz, albite and/or cleavelandite, K-feldspar, muscovite, with spodumene locally in high concentration.

Located less than 1 km west of the Lac La Corne project is the Chubb Lithium deposit which is currently owned by Globex Mining Enterprises, and was optioned to Great Thunder Gold Corporation in May 2016. Drilling intersections obtained in 1994 by Abitibi Lithium Corp. at the Chubb Lithium deposit, produced intervals of 3.72 m @ 1.78 wt. % Li₂O, 2.75 m @ 1.00 wt. % Li₂O and 2.38 m @ 1.25 wt. % Li₂O (refer to "Technical Report and Recommendations for Three Li-Mo Properties

Associated with the Preissac-Lacorne Batholith in the Abitibi Subprovince, Quebec, Canada: The Chubb, International and Athona Properties.”).

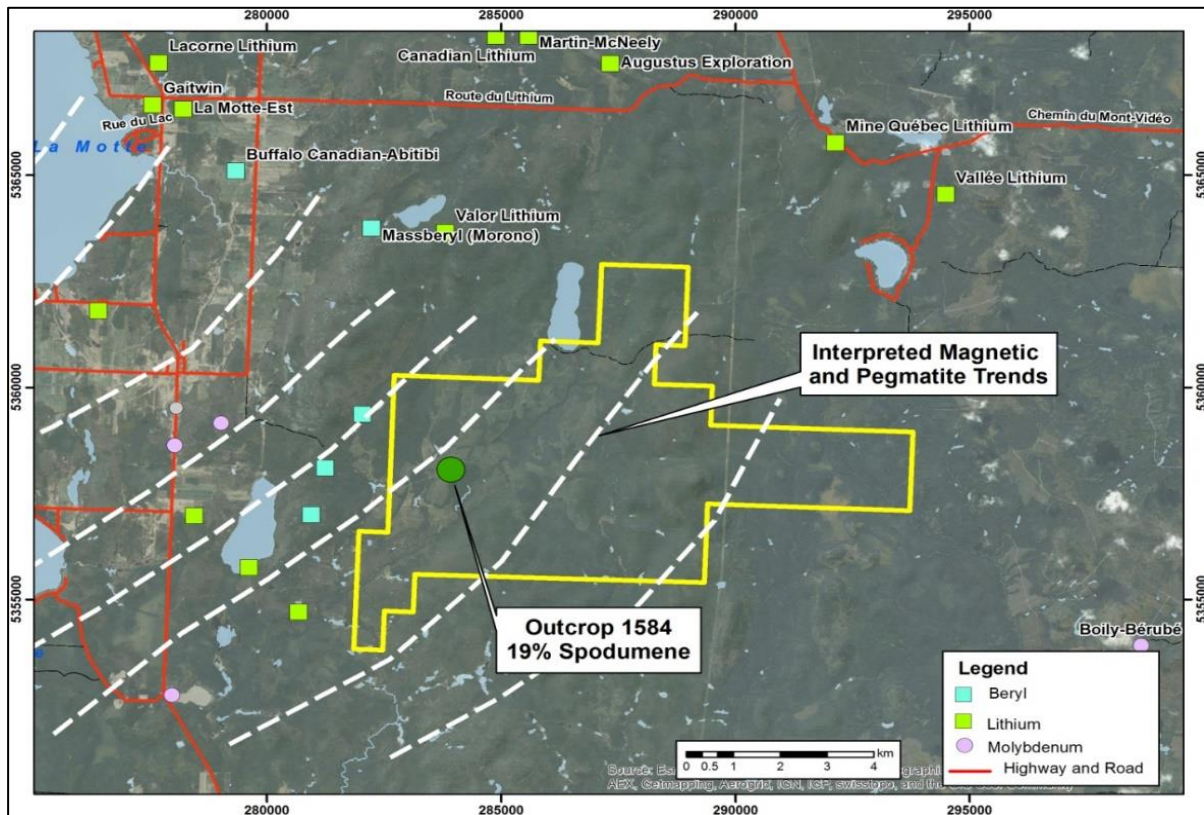


Figure 8 – Lac La Corne Project location map.

EXPLORATION PROGRAM DURING QUARTER

No fieldwork was completed during the March quarter due to winter conditions. Statutory work assessment reports were submitted to the government and subsequently accepted. A review of the most prospective areas within the claim block was completed and 50 claim areas were renewed. A work program for the summer season is being prepared.

LACOURCIERE-DARVEAU LITHIUM PROJECT

The Lacourciere-Darveau lithium project consists of 181 mineral claims comprising a total area of approximately 104.25 km² located approximately 15 km southwest of the community of Malartic (Figure 9).

GEOLOGY AND MINERALISATION

The Lacourciere-Darveau project is located approximately 8 km east of the Wells-Lacourciere Lithium Deposit where a sample taken from an enrichment zone yielded a grade of 2.87% Li₂O. Five veins sampled in the excavated area contained between 3.0% Li₂O and 4.0% Li₂O.

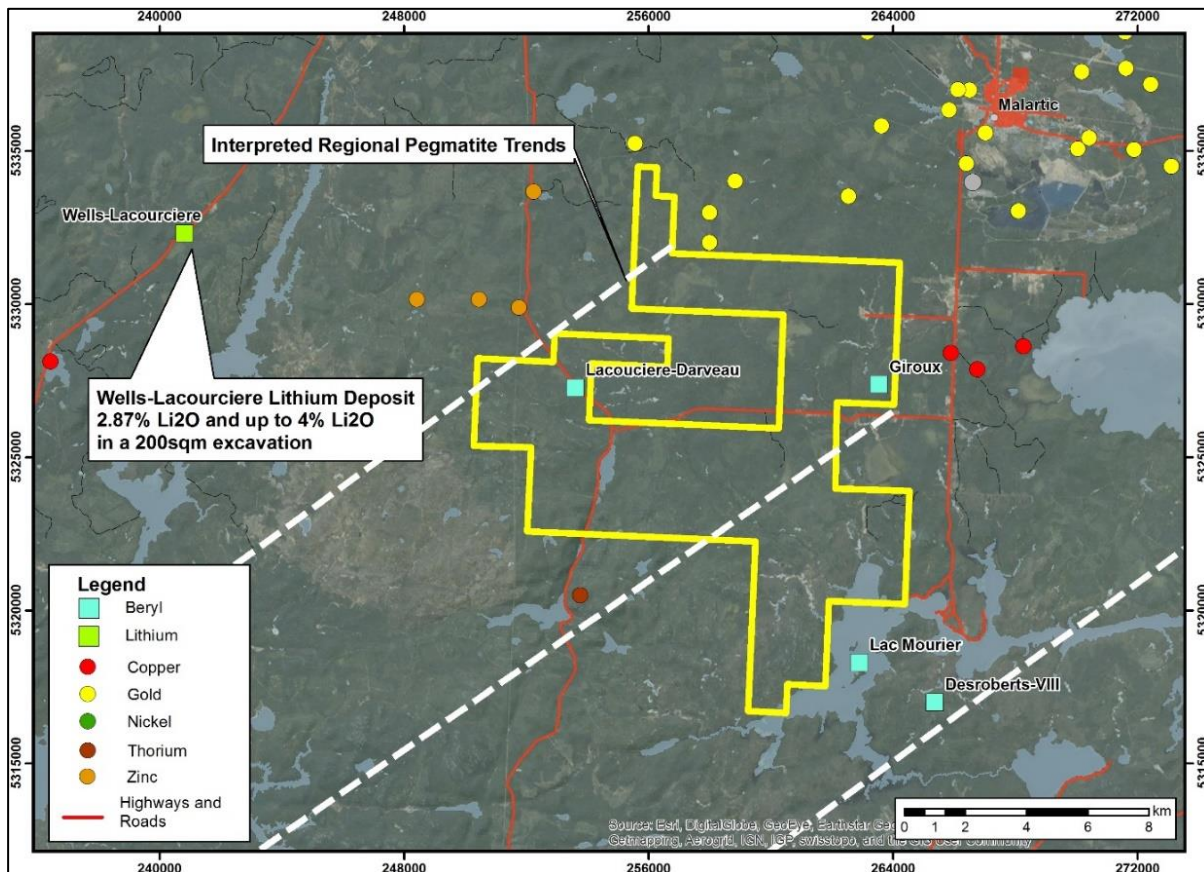


Figure 9 – Lacourciere-Darveau Project location map.

Other lithium occurrences in the vicinity of the project include Ile du Refuge and Lac Simard which are located along trend about 50km to the south-southwest and host known lithium deposits with average grades of 2.1% Li₂O and 1% Li₂O respectively.

Though there are several lithium occurrences in the vicinity, the property itself has seen limited exploration. Geological mapping and outcrop mapping were conducted in 1956 and 1957, with the geological mapping being reinterpreted in 2009. This new geology map revealed the presence of multiple zones of pegmatites and granites. The work on the property in the 1950's also identified three beryl occurrences in pegmatite veins, which is considered to be significant. No drill testing has been recorded on the Lacourciere-Darveau project.

ACTIVITIES DURING THE QUARTER

No fieldwork was completed during the March quarter due to winter conditions. An assessment of the prospective claim areas was completed and a work program for the summer season is being prepared.

CORPORATE

CAPITAL RAISING

During the quarter the Company completed a Private Placement raising \$3,138,660 (net) at an issue price of \$0.005 per share via the issue of 627,732,000 fully paid ordinary shares (Placement).

Subscribers under the Placement were also granted a free attaching option on a 1-for-1 basis, with an exercise price of \$0.01 per option expiring on 31 May 2020. This will result in the issue of 627,732,000 listed options, under the ASX code MLSOA.

The Placement was completed using the Company's Shareholder Approved placement capacity which was approved by shareholders on 16 November 2017 together with its existing capacity pursuant to ASX Listing Rules 7.1 and 7.1A.

The Placement was subscribed for by sophisticated and professional investors, none of which are related parties of the Company.

CHANGE OF COMPANY SECRETARY

During the quarter Mr Paul Fromson resigned as Company Secretary and Mr Graham Baldisseri was appointed to the role. Mr Baldisseri is an experienced professional and has held a variety of senior positions, including Company Secretary and Chief Financial Officer with several mining, exploration and engineering construction companies.

ENDS

For further information please contact:

Graham Baldisseri
Company Secretary
+61 8 9481 7833

Lachlan Reynolds
Exploration Manager
+61 8 9481 7833

Or consult our website:

www.metalsaustralia.com.au

Competent Person Declaration

The information in this report that relates to Exploration Targets, Exploration Results, Mineral Resources or Ore Reserves is based on information compiled by Mr. Lachlan Reynolds, a consultant to Metals Australia Ltd, and a member of The Australasian Institute of Mining and Metallurgy. Mr. Reynolds has sufficient experience that is relevant to the style of mineralisation and type of deposit under consideration and to the activity that he is undertaking to qualify as a Competent Person as defined in the 2012 Edition of the "Australasian Code for Reporting of Exploration Results, Mineral Resource and Ore Reserves". Mr. Reynolds consents to the inclusion in the report of the matters based on his information in the form and context in which it appears.

The Company confirms that it is not aware of any new information or data that materially affects the information included in the original market announcements. The Company confirms that the form and context in which the Competent Person's findings are presented have not been materially modified from the original market announcements.

Forward-Looking Statements

This document may include forward-looking statements. Forward-looking statements include, but are not limited to, statements concerning Metals Australia Ltd's planned exploration program and other statements that are not historical facts. When used in this document, the words such as "could," "plan," "estimate," "expect," "intend," "may", "potential," "should," and similar expressions are forward-looking statements. Although Metals Australia Ltd believes that its expectations reflected in these forward-looking statements are reasonable, such statements involve risks and uncertainties and no assurance can be given that actual results will be consistent with these forward-looking statements.

MINERAL AND EXPLORATION LICENCES

Country	State/ Region	Project	Tenement ID	Area km ²	Grant Date	Expiry Date	Interest %	Company
Namibia	Erongo	Mile 72	EPL 3308	73	19/05/2005	17/5/2018	100	Metals Namibia (Pty) Ltd
Australia	WA	Manindi	M57/227	4.64	3/09/1992	2/09/2034	80	Karrilea Holdings Pty Ltd
			M57/240	3.15	10/11/1993	9/11/2035	80	
			M57/533	8.01	17/01/2008	16/01/2029	80	
Australia	WA	Sherlock Bay	E47/1769	44.7	7/09/2009	6/09/2019	4.5	Metals Australia Ltd
			E47/1770	134.3	7/09/2009	6/09/2019	4.5	
			M47/567	10	7/09/2004	22/09/2025	4.5	

Lac Rainy Graphite Project (Quebec)

Total Count	Claim number (CDC series)	Area (ha)	Grant Date	Expiry Date
1	2511046	52.32	1/02/2018	31/01/2020
2	2511047	52.31	1/02/2018	31/01/2020
3	2477073	52.35	2/02/2017	1/02/2019
4	2477074	52.35	2/02/2017	1/02/2019
5	2477075	52.35	2/02/2017	1/02/2019
6	2477076	52.34	2/02/2017	1/02/2019
7	2477077	52.34	2/02/2017	1/02/2019
8	2477078	52.30	2/02/2017	1/02/2019
9	2477079	52.30	2/02/2017	1/02/2019
10	2493128	52.34	24/05/2017	23/05/2019
11	2493129	52.30	24/05/2017	23/05/2019
12	2493130	52.30	24/05/2017	23/05/2019
13	2493131	52.30	24/05/2017	23/05/2019
14	2493132	52.30	24/05/2017	23/05/2019
15	2493133	52.29	24/05/2017	23/05/2019
16	2493134	52.29	24/05/2017	23/05/2019
17	2493135	52.31	24/05/2017	23/05/2019
18	2467343	52.33	31/10/2016	30/10/2018
19	2467344	52.33	31/10/2016	30/10/2018
20	2467345	52.32	31/10/2016	30/10/2018
21	2467346	52.32	31/10/2016	30/10/2018
22	2462752	52.36	19/09/2016	18/09/2018
23	2462753	52.36	19/09/2016	18/09/2018
24	2462754	52.35	19/09/2016	18/09/2018
25	2462755	52.35	19/09/2016	18/09/2018
26	2462756	52.35	19/09/2016	18/09/2018
27	2462757	52.34	19/09/2016	18/09/2018
28	2462758	52.34	19/09/2016	18/09/2018
29	2462759	52.34	19/09/2016	18/09/2018
30	2462760	52.34	19/09/2016	18/09/2018
31	2462761	52.34	19/09/2016	18/09/2018
32	2462762	52.33	19/09/2016	18/09/2018
33	2462763	52.33	19/09/2016	18/09/2018
34	2462764	52.33	19/09/2016	18/09/2018
35	2462765	52.33	19/09/2016	18/09/2018
36	2462766	52.33	19/09/2016	18/09/2018
37	2462767	52.33	19/09/2016	18/09/2018
38	2462768	52.32	19/09/2016	18/09/2018
39	2462769	52.32	19/09/2016	18/09/2018
40	2462770	52.32	19/09/2016	18/09/2018
41	2462771	52.32	19/09/2016	18/09/2018
42	2462772	52.32	19/09/2016	18/09/2018
43	2462773	52.31	19/09/2016	18/09/2018
44	2462774	52.31	19/09/2016	18/09/2018
45	2462775	52.31	19/09/2016	18/09/2018

Total Count	Claim number (CDC series)	Area (ha)	Grant Date	Expiry Date
46	2462776	52.31	19/09/2016	18/09/2018
47	2462777	52.31	19/09/2016	18/09/2018
48	2462778	52.31	19/09/2016	18/09/2018
49	2462779	52.30	19/09/2016	18/09/2018
50	2462780	52.30	19/09/2016	18/09/2018
51	2462781	52.30	19/09/2016	18/09/2018
52	2462782	52.30	19/09/2016	18/09/2018
53	2462783	52.30	19/09/2016	18/09/2018
54	2471082	52.38	16/12/2016	15/12/2018
55	2471083	52.37	16/12/2016	15/12/2018
56	2471084	52.36	16/12/2016	15/12/2018
57	2471085	52.36	16/12/2016	15/12/2018
58	2471086	52.36	16/12/2016	15/12/2018
59	2471087	52.36	16/12/2016	15/12/2018
60	2471088	52.35	16/12/2016	15/12/2018
61	2471089	52.35	16/12/2016	15/12/2018
62	2471090	52.35	16/12/2016	15/12/2018
63	2471091	52.35	16/12/2016	15/12/2018
64	2471092	52.34	16/12/2016	15/12/2018
65	2471093	52.34	16/12/2016	15/12/2018
66	2471094	52.34	16/12/2016	15/12/2018
67	2471095	52.34	16/12/2016	15/12/2018
68	2471096	52.33	16/12/2016	15/12/2018
69	2471097	52.33	16/12/2016	15/12/2018
70	2471098	52.33	16/12/2016	15/12/2018
71	2471099	52.33	16/12/2016	15/12/2018
72	2471100	52.32	16/12/2016	15/12/2018
73	2471101	52.32	16/12/2016	15/12/2018
74	2471102	52.32	16/12/2016	15/12/2018
75	2471103	52.32	16/12/2016	15/12/2018
76	2471104	52.31	16/12/2016	15/12/2018
77	2471105	52.31	16/12/2016	15/12/2018
78	2471106	52.31	16/12/2016	15/12/2018
79	2471107	52.31	16/12/2016	15/12/2018
80	2471108	52.31	16/12/2016	15/12/2018
81	2465815	52.30	13/10/2016	12/10/2018
82	2499090	35.22	2/08/2017	1/08/2019
83	2499091	45.67	2/08/2017	1/08/2019
84	2499092	25.58	2/08/2017	1/08/2019
85	2499356	52.35	7/08/2017	6/08/2019
86	2499357	52.35	7/08/2017	6/08/2019
87	2499377	52.34	7/08/2017	6/08/2019
88	2499378	52.35	7/08/2017	6/08/2019

Lac La Motte Lithium Project (Quebec)

Total Count	Claim number (CDC series)	Area (ha)	Date Granted	Date Expires
1	2455432	24.94	28/07/2016	27/07/2018
2	2455433	54.02	28/07/2016	27/07/2018
3	2455434	57.25	28/07/2016	27/07/2018
4	2455435	57.25	28/07/2016	27/07/2018
5	2455436	57.25	28/07/2016	27/07/2018
6	2455437	57.25	28/07/2016	27/07/2018
7	2455438	39.10	28/07/2016	27/07/2018
8	2455439	57.24	28/07/2016	27/07/2018
9	2455440	57.24	28/07/2016	27/07/2018
10	2455441	57.24	28/07/2016	27/07/2018
11	2455442	57.24	28/07/2016	27/07/2018
12	2455443	57.24	28/07/2016	27/07/2018
13	2455444	57.24	28/07/2016	27/07/2018
14	2455445	57.25	28/07/2016	27/07/2018
15	2455446	57.25	28/07/2016	27/07/2018
16	2455447	57.25	28/07/2016	27/07/2018
17	2455448	57.25	28/07/2016	27/07/2018
18	2455449	57.25	28/07/2016	27/07/2018
19	2455450	57.25	28/07/2016	27/07/2020
20	2455451	57.25	28/07/2016	27/07/2020
21	2455452	47.63	28/07/2016	27/07/2020
22	2455453	54.61	28/07/2016	27/07/2020
23	2455454	57.24	28/07/2016	27/07/2020
24	2455455	57.24	28/07/2016	27/07/2020
25	2455456	57.24	28/07/2016	27/07/2020
26	2455457	57.23	28/07/2016	27/07/2020
27	2455458	57.23	28/07/2016	27/07/2020
28	2455459	33.56	28/07/2016	27/07/2020
29	2455462	57.29	28/07/2016	27/07/2018
30	2455463	57.29	28/07/2016	27/07/2018
31	2455464	57.28	28/07/2016	27/07/2018
32	2455465	57.28	28/07/2016	27/07/2018
33	2455466	57.27	28/07/2016	27/07/2018
34	2455467	57.27	28/07/2016	27/07/2018
35	2455468	57.27	28/07/2016	27/07/2018
36	2455469	57.27	28/07/2016	27/07/2018
37	2455470	57.27	28/07/2016	27/07/2018
38	2455471	57.27	28/07/2016	27/07/2018
39	2455472	57.26	28/07/2016	27/07/2018
40	2455473	57.26	28/07/2016	27/07/2018
41	2455474	57.26	28/07/2016	27/07/2018
42	2455475	57.26	28/07/2016	27/07/2018
43	2455476	57.26	28/07/2016	27/07/2018
44	2455477	57.26	28/07/2016	27/07/2018
45	2455478	57.26	28/07/2016	27/07/2018
46	2455479	57.26	28/07/2016	27/07/2018

Total Count	Claim number (CDC series)	Area (ha)	Date Granted	Date Expires
47	2455480	57.26	28/07/2016	27/07/2018
48	2455481	57.26	28/07/2016	27/07/2018
49	2455482	57.26	28/07/2016	27/07/2018
50	2455483	57.26	28/07/2016	27/07/2018
51	2455484	57.26	28/07/2016	27/07/2018
52	2455485	57.26	28/07/2016	27/07/2018
53	2455486	57.26	28/07/2016	27/07/2018
54	2455487	57.28	28/07/2016	27/07/2018
55	2455488	57.28	28/07/2016	27/07/2018
56	2455489	57.27	28/07/2016	27/07/2018
57	2455490	57.27	28/07/2016	27/07/2018
58	2455491	57.27	28/07/2016	27/07/2018
59	2455492	57.27	28/07/2016	27/07/2018
60	2455493	57.27	28/07/2016	27/07/2018
61	2457668	57.08	16/08/2016	15/08/2018
62	2505936	57.29	22/11/2017	21/11/2019
63	2505937	57.28	22/11/2017	21/11/2019
64	2505938	57.28	22/11/2017	21/11/2019
65	2505939	57.28	22/11/2017	21/11/2019
66	2505940	57.27	22/11/2017	21/11/2019
67	2505941	57.28	22/11/2017	21/11/2019
68	2505971	57.25	22/11/2017	21/11/2019
69	2505972	57.25	22/11/2017	21/11/2019
70	2505973	57.24	22/11/2017	21/11/2019
71	2505974	57.24	22/11/2017	21/11/2019
72	2505975	57.24	22/11/2017	21/11/2019
73	2505976	57.24	22/11/2017	21/11/2019
74	2505977	57.23	22/11/2017	21/11/2019
75	2505978	57.23	22/11/2017	21/11/2019
76	2505979	57.23	22/11/2017	21/11/2019
77	2505980	57.22	22/11/2017	21/11/2019
78	2505981	57.22	22/11/2017	21/11/2019
79	2505982	57.22	22/11/2017	21/11/2019
80	2505983	57.22	22/11/2017	21/11/2019
81	2506552	24.22	28/11/2017	27/11/2019
82	2506553	29.52	28/11/2017	27/11/2019
83	2506554	57.21	28/11/2017	27/11/2019
84	2506555	55.77	28/11/2017	27/11/2019
85	2455460	41.19	28/07/2016	27/07/2020
86	2455461	22.73	28/07/2016	27/07/2020
87	2438019	42.48	14/03/2016	13/03/2020
88	2438020	45.81	14/03/2016	13/03/2020

Lac La Corne Lithium Project (Quebec)

Total Count	Claim number (CDC series)	Area (ha)	Grant Date	Expiry Date
1	2450086	57.28	20/06/2016	19/06/2020
2	2450087	57.28	20/06/2016	19/06/2020
3	2450088	57.27	20/06/2016	19/06/2020
4	2450089	57.26	20/06/2016	19/06/2020
5	2450090	57.26	20/06/2016	19/06/2020
6	2454427	57.28	25/07/2016	24/07/2020
7	2454428	57.28	25/07/2016	24/07/2020
8	2454429	57.27	25/07/2016	24/07/2020
9	2454430	57.26	25/07/2016	24/07/2020
10	2454431	57.26	25/07/2016	24/07/2020
11	2454432	57.25	25/07/2016	24/07/2020
12	2454433	57.25	25/07/2016	24/07/2020
13	2454434	57.25	25/07/2016	24/07/2020
14	2454435	57.25	25/07/2016	24/07/2020
15	2444218	57.27	5/05/2016	4/05/2020
16	2444219	57.27	5/05/2016	4/05/2020
17	2455213	57.31	28/07/2016	27/07/2020
18	2455214	57.30	28/07/2016	27/07/2020
19	2455215	57.30	28/07/2016	27/07/2020
20	2455216	57.29	28/07/2016	27/07/2020
21	2455217	57.29	28/07/2016	27/07/2020
22	2455218	57.29	28/07/2016	27/07/2020
23	2455219	57.27	28/07/2016	27/07/2020
24	2455220	57.26	28/07/2016	27/07/2020
25	2455221	57.26	28/07/2016	27/07/2020
26	2455222	57.26	28/07/2016	27/07/2020
27	2455223	57.25	28/07/2016	27/07/2020
28	2455224	57.25	28/07/2016	27/07/2020
29	2455225	57.25	28/07/2016	27/07/2020
30	2455226	57.24	28/07/2016	27/07/2020
31	2455227	57.24	28/07/2016	27/07/2020
32	2455228	57.24	28/07/2016	27/07/2020
33	2455229	57.24	28/07/2016	27/07/2020
34	2455230	57.23	28/07/2016	27/07/2020
35	2455231	57.23	28/07/2016	27/07/2020
36	2455232	57.23	28/07/2016	27/07/2020
37	2455233	57.28	28/07/2016	27/07/2020
38	2455234	57.28	28/07/2016	27/07/2018
39	2455235	57.27	28/07/2016	27/07/2020
40	2455236	57.25	28/07/2016	27/07/2020
41	2455237	57.21	28/07/2016	27/07/2020
42	2455238	57.21	28/07/2016	27/07/2020
43	2455239	57.20	28/07/2016	27/07/2020
44	2455240	57.29	28/07/2016	27/07/2020
45	2455241	57.29	28/07/2016	27/07/2020
46	2455242	57.29	28/07/2016	27/07/2020
47	2455243	57.29	28/07/2016	27/07/2018
48	2455244	57.29	28/07/2016	27/07/2018
49	2455245	57.29	28/07/2016	27/07/2018
50	2455246	57.28	28/07/2016	27/07/2018
51	2455247	57.28	28/07/2016	27/07/2018
52	2455248	57.28	28/07/2016	27/07/2018
53	2455249	57.28	28/07/2016	27/07/2018
54	2455250	57.28	28/07/2016	27/07/2018
55	2455251	57.28	28/07/2016	27/07/2018

Total Count	Claim number (CDC series)	Area (ha)	Grant Date	Expiry Date
56	2455252	57.28	28/07/2016	27/07/2018
57	2455253	57.27	28/07/2016	27/07/2018
58	2455254	57.27	28/07/2016	27/07/2018
59	2455255	57.27	28/07/2016	27/07/2018
60	2455256	57.27	28/07/2016	27/07/2018
61	2455257	57.27	28/07/2016	27/07/2018
62	2455258	57.27	28/07/2016	27/07/2018
63	2455259	57.27	28/07/2016	27/07/2018
64	2455260	57.26	28/07/2016	27/07/2018
65	2455261	57.26	28/07/2016	27/07/2018
66	2455262	57.26	28/07/2016	27/07/2018
67	2455263	57.26	28/07/2016	27/07/2018
68	2455264	57.26	28/07/2016	27/07/2018
69	2455265	57.26	28/07/2016	27/07/2018
70	2455266	57.26	28/07/2016	27/07/2018
71	2455267	57.26	28/07/2016	27/07/2018
72	2455268	57.26	28/07/2016	27/07/2018
73	2455269	57.26	28/07/2016	27/07/2018
74	2455270	57.26	28/07/2016	27/07/2018
75	2455271	57.26	28/07/2016	27/07/2018
76	2455272	57.26	28/07/2016	27/07/2018
77	2455273	57.25	28/07/2016	27/07/2018
78	2455274	57.25	28/07/2016	27/07/2018
79	2455275	57.25	28/07/2016	27/07/2018
80	2455276	57.25	28/07/2016	27/07/2018
81	2455277	57.25	28/07/2016	27/07/2020
82	2455278	57.25	28/07/2016	27/07/2018
83	2455279	57.25	28/07/2016	27/07/2018
84	2455280	57.22	28/07/2016	27/07/2020
85	2455281	57.22	28/07/2016	27/07/2020
86	2455282	57.22	28/07/2016	27/07/2020
87	2455283	57.22	28/07/2016	27/07/2020

Lacourciere-Darveau Lithium Project (Quebec)

Total count	Claim number (CDC series)	Area (ha)	Grant Date	Expiry Date
1	2455116	57.58	27/07/2016	26/07/2018
2	2455117	57.58	27/07/2016	26/07/2018
3	2455118	57.58	27/07/2016	26/07/2018
4	2455119	57.58	27/07/2016	26/07/2018
5	2455120	57.58	27/07/2016	26/07/2018
6	2455121	57.58	27/07/2016	26/07/2018
7	2455122	57.58	27/07/2016	26/07/2018
8	2455123	57.58	27/07/2016	26/07/2018
9	2455127	57.57	27/07/2016	26/07/2018
10	2455128	57.57	27/07/2016	26/07/2018
11	2455129	57.57	27/07/2016	26/07/2018
12	2455130	57.57	27/07/2016	26/07/2018
13	2455131	57.57	27/07/2016	26/07/2018
14	2455132	57.57	27/07/2016	26/07/2018
15	2455133	57.57	27/07/2016	26/07/2018
16	2455134	57.57	27/07/2016	26/07/2018
17	2454899	57.62	27/07/2016	26/07/2018
18	2454900	57.62	27/07/2016	26/07/2018
19	2454901	57.62	27/07/2016	26/07/2018
20	2454902	57.62	27/07/2016	26/07/2018
21	2454903	57.62	27/07/2016	26/07/2018
22	2454904	57.62	27/07/2016	26/07/2018
23	2454905	57.62	27/07/2016	26/07/2018
24	2454906	57.62	27/07/2016	26/07/2018
25	2454907	57.61	27/07/2016	26/07/2018
26	2454908	57.61	27/07/2016	26/07/2018
27	2454909	57.61	27/07/2016	26/07/2018
28	2454910	57.61	27/07/2016	26/07/2018
29	2454911	57.61	27/07/2016	26/07/2018
30	2454912	57.61	27/07/2016	26/07/2018
31	2454913	57.61	27/07/2016	26/07/2018
32	2454914	57.61	27/07/2016	26/07/2018
33	2454915	57.60	27/07/2016	26/07/2018
34	2454916	57.60	27/07/2016	26/07/2018
35	2454917	57.59	27/07/2016	26/07/2018
36	2454918	57.59	27/07/2016	26/07/2018
37	2454919	57.62	27/07/2016	26/07/2018
38	2454920	57.62	27/07/2016	26/07/2018
39	2454921	57.61	27/07/2016	26/07/2018
40	2454922	57.61	27/07/2016	26/07/2018
41	2454923	57.60	27/07/2016	26/07/2018
42	2454924	57.60	27/07/2016	26/07/2018
43	2454925	57.60	27/07/2016	26/07/2018
44	2454926	57.60	27/07/2016	26/07/2018
45	2454927	57.60	27/07/2016	26/07/2018
46	2454928	57.59	27/07/2016	26/07/2018
47	2454929	57.59	27/07/2016	26/07/2018
48	2454930	57.59	27/07/2016	26/07/2018
49	2454931	57.59	27/07/2016	26/07/2018

Total count	Claim number (CDC series)	Area (ha)	Grant Date	Expiry Date
50	2454932	57.59	27/07/2016	26/07/2018
51	2454933	57.56	27/07/2016	26/07/2018
52	2454934	57.56	27/07/2016	26/07/2018
53	2454935	57.56	27/07/2016	26/07/2018
54	2454936	57.57	27/07/2016	26/07/2018
55	2454937	57.57	27/07/2016	26/07/2018
56	2454938	57.57	27/07/2016	26/07/2018
57	2454939	57.63	27/07/2016	26/07/2018
58	2454940	57.63	27/07/2016	26/07/2018
59	2454941	57.63	27/07/2016	26/07/2018
60	2454942	57.63	27/07/2016	26/07/2018
61	2454943	57.62	27/07/2016	26/07/2018
62	2454944	57.62	27/07/2016	26/07/2018
63	2454945	57.62	27/07/2016	26/07/2018
64	2454946	57.62	27/07/2016	26/07/2018
65	2454947	57.62	27/07/2016	26/07/2018
66	2454948	57.61	27/07/2016	26/07/2018
67	2454949	57.61	27/07/2016	26/07/2018
68	2454950	57.61	27/07/2016	26/07/2018
69	2454951	57.60	27/07/2016	26/07/2018
70	2454952	57.60	27/07/2016	26/07/2018
71	2454953	57.60	27/07/2016	26/07/2018
72	2454954	57.60	27/07/2016	26/07/2018
73	2454955	57.60	27/07/2016	26/07/2018
74	2454956	57.59	27/07/2016	26/07/2018
75	2454957	57.59	27/07/2016	26/07/2018
76	2454958	57.59	27/07/2016	26/07/2018
77	2454959	57.60	27/07/2016	26/07/2018
78	2454960	57.63	27/07/2016	26/07/2018
79	2454961	57.63	27/07/2016	26/07/2018
80	2454962	57.63	27/07/2016	26/07/2018
81	2454963	57.64	27/07/2016	26/07/2018
82	2454964	57.62	27/07/2016	26/07/2018
83	2454965	57.62	27/07/2016	26/07/2018
84	2454966	57.63	27/07/2016	26/07/2018
85	2454967	57.63	27/07/2016	26/07/2018
86	2454968	57.63	27/07/2016	26/07/2018
87	2454969	57.61	27/07/2016	26/07/2018
88	2454970	57.61	27/07/2016	26/07/2018
89	2454971	57.62	27/07/2016	26/07/2018
90	2454972	57.62	27/07/2016	26/07/2018
91	2454973	57.62	27/07/2016	26/07/2018
92	2454974	57.62	27/07/2016	26/07/2018
93	2454975	57.62	27/07/2016	26/07/2018
94	2454976	57.60	27/07/2016	26/07/2018
95	2454977	57.61	27/07/2016	26/07/2018
96	2454978	57.61	27/07/2016	26/07/2018
97	2454990	57.59	27/07/2016	26/07/2018
98	2454991	57.59	27/07/2016	26/07/2018

Total count	Claim number (CDC series)	Area (ha)	Grant Date	Expiry Date
99	2454992	57.59	27/07/2016	26/07/2018
100	2454993	57.59	27/07/2016	26/07/2018
101	2454994	57.59	27/07/2016	26/07/2018
102	2454995	57.59	27/07/2016	26/07/2018
103	2454996	57.60	27/07/2016	26/07/2018
104	2454997	57.60	27/07/2016	26/07/2018
105	2454998	57.57	27/07/2016	26/07/2018
106	2454999	57.56	27/07/2016	26/07/2018
107	2455000	57.55	27/07/2016	26/07/2018
108	2455001	57.55	27/07/2016	26/07/2018
109	2455002	57.55	27/07/2016	26/07/2018
110	2455003	57.55	27/07/2016	26/07/2018
111	2455004	57.55	27/07/2016	26/07/2018
112	2455005	57.55	27/07/2016	26/07/2018
113	2455006	57.55	27/07/2016	26/07/2018
114	2455007	57.55	27/07/2016	26/07/2018
115	2455008	57.55	27/07/2016	26/07/2018
116	2455009	57.55	27/07/2016	26/07/2018
117	2455010	57.55	27/07/2016	26/07/2018
118	2455011	57.54	27/07/2016	26/07/2018
119	2455012	57.54	27/07/2016	26/07/2018
120	2455013	57.54	27/07/2016	26/07/2018
121	2455014	57.54	27/07/2016	26/07/2018
122	2455015	57.54	27/07/2016	26/07/2018
123	2455016	57.54	27/07/2016	26/07/2018
124	2455017	57.54	27/07/2016	26/07/2018
125	2455018	57.54	27/07/2016	26/07/2018
126	2455019	57.54	27/07/2016	26/07/2018
127	2455020	57.53	27/07/2016	26/07/2018
128	2455021	57.53	27/07/2016	26/07/2018
129	2455022	57.52	27/07/2016	26/07/2018
130	2455023	57.52	27/07/2016	26/07/2018
131	2455024	57.51	27/07/2016	26/07/2018
132	2450013	57.68	20/06/2016	19/06/2018
133	2450014	57.68	20/06/2016	19/06/2018
134	2450015	57.67	20/06/2016	19/06/2018
135	2450016	57.67	20/06/2016	19/06/2018
136	2450017	57.67	20/06/2016	19/06/2018
137	2450018	57.67	20/06/2016	19/06/2018
138	2450019	57.66	20/06/2016	19/06/2018
139	2450020	57.66	20/06/2016	19/06/2018
140	2450021	57.66	20/06/2016	19/06/2018
141	2450022	57.66	20/06/2016	19/06/2018

Total count	Claim number (CDC series)	Area (ha)	Grant Date	Expiry Date
142	2450023	57.65	20/06/2016	19/06/2018
143	2450024	57.65	20/06/2016	19/06/2018
144	2450025	57.65	20/06/2016	19/06/2018
145	2450026	57.65	20/06/2016	19/06/2018
146	2450027	57.64	20/06/2016	19/06/2018
147	2450028	57.64	20/06/2016	19/06/2018
148	2450029	57.64	20/06/2016	19/06/2018
149	2450030	57.64	20/06/2016	19/06/2018
150	2450031	57.64	20/06/2016	19/06/2018
151	2450032	57.64	20/06/2016	19/06/2018
152	2450033	57.64	20/06/2016	19/06/2018
153	2450034	57.64	20/06/2016	19/06/2018
154	2505207	57.61	20/11/2017	19/11/2019
155	2505208	57.60	20/11/2017	19/11/2019
156	2505209	57.60	20/11/2017	19/11/2019
157	2505210	57.59	20/11/2017	19/11/2019
158	2505211	57.59	20/11/2017	19/11/2019
159	2505212	57.59	20/11/2017	19/11/2019
160	2505213	57.58	20/11/2017	19/11/2019
161	2505214	57.58	20/11/2017	19/11/2019
162	2505215	57.58	20/11/2017	19/11/2019
163	2505241	57.54	20/11/2017	19/11/2019
164	2505242	57.58	20/11/2017	19/11/2019
165	2505243	57.58	20/11/2017	19/11/2019
166	2505244	57.58	20/11/2017	19/11/2019
167	2505245	57.57	20/11/2017	19/11/2019
168	2505246	57.57	20/11/2017	19/11/2019
169	2505247	57.57	20/11/2017	19/11/2019
170	2505248	57.57	20/11/2017	19/11/2019
171	2505249	57.57	20/11/2017	19/11/2019
172	2505250	57.56	20/11/2017	19/11/2019
173	2505251	57.56	20/11/2017	19/11/2019
174	2505252	57.56	20/11/2017	19/11/2019
175	2505253	57.56	20/11/2017	19/11/2019
176	2505254	57.56	20/11/2017	19/11/2019
177	2505255	57.55	20/11/2017	19/11/2019
178	2505256	57.55	20/11/2017	19/11/2019
179	2505257	57.55	20/11/2017	19/11/2019
180	2505258	57.54	20/11/2017	19/11/2019
181	2505259	57.54	20/11/2017	19/11/2019

Lac du Marcheur Cobalt Project (Quebec)

Total Count	Claim number (CDC series)	Area (ha)	Date Granted	Date Expires
1	2505515	59.61	20/11/2017	19/11/2019
2	2505516	59.61	20/11/2017	19/11/2019
3	2473803	59.55	27/01/2017	26/01/2019
4	2473804	59.54	27/01/2017	26/01/2019
5	2473805	59.53	27/01/2017	26/01/2019
6	2473806	59.53	27/01/2017	26/01/2019
7	2473807	59.53	27/01/2017	26/01/2019
8	2473808	59.52	27/01/2017	26/01/2019
9	2488121	56.75	6/04/2017	5/04/2019
10	2488122	34.77	6/04/2017	5/04/2019
11	2488123	24.04	6/04/2017	5/04/2019
12	2488124	19.67	6/04/2017	5/04/2019
13	2488125	0.72	6/04/2017	5/04/2019
14	2488126	27.75	6/04/2017	5/04/2019
15	2488062	58.30	5/04/2017	4/04/2019
16	2488063	31.04	5/04/2017	4/04/2019
17	2488064	31.51	5/04/2017	4/04/2019
18	2488065	59.61	5/04/2017	4/04/2019
19	2488066	59.61	5/04/2017	4/04/2019
20	2488067	59.61	5/04/2017	4/04/2019
21	2488068	59.61	5/04/2017	4/04/2019
22	2488069	59.61	5/04/2017	4/04/2019
23	2477461	59.55	7/02/2017	6/02/2019
24	2477462	56.91	7/02/2017	6/02/2019
25	2477463	8.83	7/02/2017	6/02/2019
26	2477464	46.28	7/02/2017	6/02/2019
27	2477465	49.94	7/02/2017	6/02/2019
28	2477466	10.88	7/02/2017	6/02/2019
29	2477467	23.53	7/02/2017	6/02/2019
30	2477468	56.87	7/02/2017	6/02/2019
31	2477469	9.58	7/02/2017	6/02/2019
32	2477470	54.20	7/02/2017	6/02/2019
33	2477471	41.03	7/02/2017	6/02/2019
34	2477472	55.11	7/02/2017	6/02/2019
35	2477473	18.90	7/02/2017	6/02/2019
36	2477474	35.87	7/02/2017	6/02/2019