

19 May 2016...High Grade Gold at Edna Beryl West

- 5m at 27g/t gold incl. 2m at 51g/t gold
- 13m at 8.7g/t gold incl. 7m at 15g/t gold

2 August 2016... "Bonanza" Gold at Edna Beryl West

- 5m at 35.6g/t gold from 120m
- 2m at 30.1g/t gold from 128m
- 3m at 36.6g/t gold from 227m

13 July 2017...Edna Beryl Mine Opening

13 December 2017... Discovery Drill hole at Kadungle, NSW

20 December 2017...First Gold Pour from Edna Beryl

19 February 2018....Emmerson retains gold projects within Tennant Creek JV

10 April 2018.....New high grade Cobalt, Copper and Gold at Tennant Creek



**Investor Presentation**



# Important notice and disclaimer



This presentation has been prepared by Emmerson Resources Limited ACN 117 086 745 (ASX: **ERM**) (the “**Company**”) and is being provided to a limited number of investors for the sole purpose of providing preliminary background information to enable recipients to review the business activities of the Company. It is not intended as an offer, invitation, solicitation or recommendation with respect to the purchase or sale of any securities.

This presentation should not be relied upon as a representation of any matter that a potential investor should consider in evaluating the Company. The Company, nor any of its directors, agents, officers, employees or affiliates does not make any representation or warranty, express or implied, as to or endorsement of, the accuracy or completeness of any information, statements, representations or forecasts contained in this presentation, and they do not accept any liability for any statement made in, or omitted from, this presentation.

Prospective investors should make their own independent evaluation of an investment in the Company.

Nothing in this presentation should be construed as a financial product advice, whether personal or general, for the purposes of Section 766B of the Corporations Act. This presentation consists purely of factual information and does not involve or imply a recommendation or a statement of opinion in respect of whether to buy, sell or hold a financial product. The Company has not considered any of your objectives, financial situation or needs.

This presentation and contents has been made available in confidence and may not be reproduced or disclosed to third parties or made public in any way without the express written permission of the Company.

# Why invest in Emmerson?



1

## **Exposure to high-grade Cobalt, Copper and Gold**

Best intersections of greater than  
1.3% Co, 10.5% Cu and 15g/t Au

2

## **Revenue Stream from first high-grade gold mine**

Head grade of the Edna Beryl gold  
mine of +40g/t Au

3

## **Commanding ground positions in Tennant Creek (2,600km<sup>2</sup>) and NSW (2,400km<sup>2</sup>)**

4

## **Track record of discoveries from systematic science based exploration**

Drilling and geophysical programs  
now underway

5

## **Highly credentialed and committed Board and Management**

Majority have been with Emmerson  
since 2007

6

## **Cashed up and poised for further success**

\$4.6M cash, debt free and revenue  
stream from small mines

# Board of Directors



**Mr. Andrew McIlwain** B.Eng (Mining)  
*Non-Executive Chairman*

Mining Engineer with more than 25 years experience in operational, senior management and executive roles (MIM, WMC, UML & others).



**Mr. Robert Bills** B.Sc, M.Sc  
*Managing Director and Chief Executive Officer*

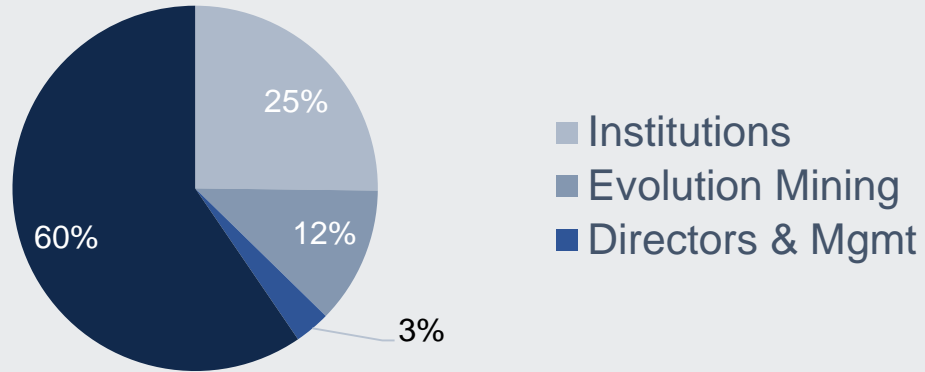
Geologist with over 30 years experience in exploration and mining with WMC and BHP. Joined Emmerson in late 2007 as the Managing Director and CEO.



**Dr. Allan Trench** B.Sc (Hons), Ph.D, M.Sc, MBA  
*Non-Executive Director*

Geologist/geophysicist with extensive experience in strategy, project development and operations within the natural resource sector.

# Capital Structure

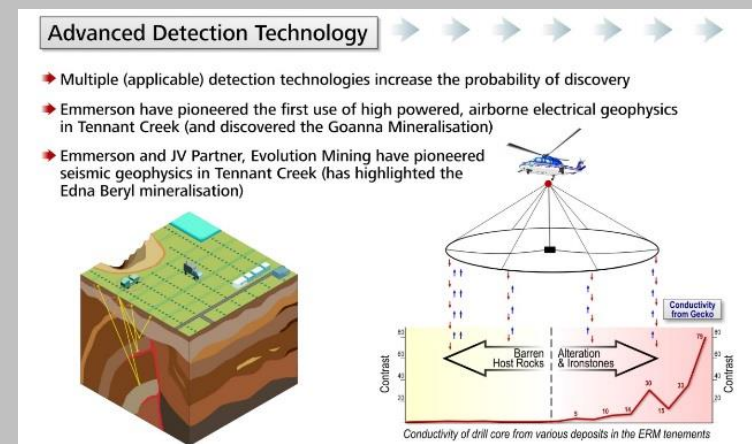
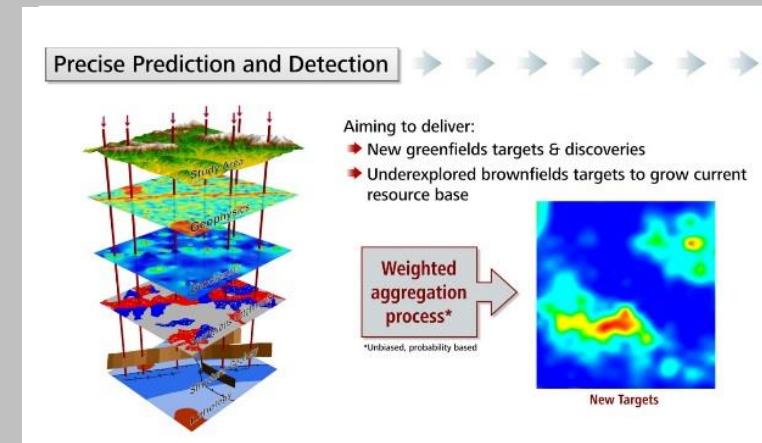


ASX code	ERM
Shares on issue	405,530,203
Options (exercise price \$0.135)	19,800,000
Market capitalisation (at \$0.096/share)	\$38.9 million
Cash (31/03/18)	\$4.6 million
Enterprise value	\$34.3 million

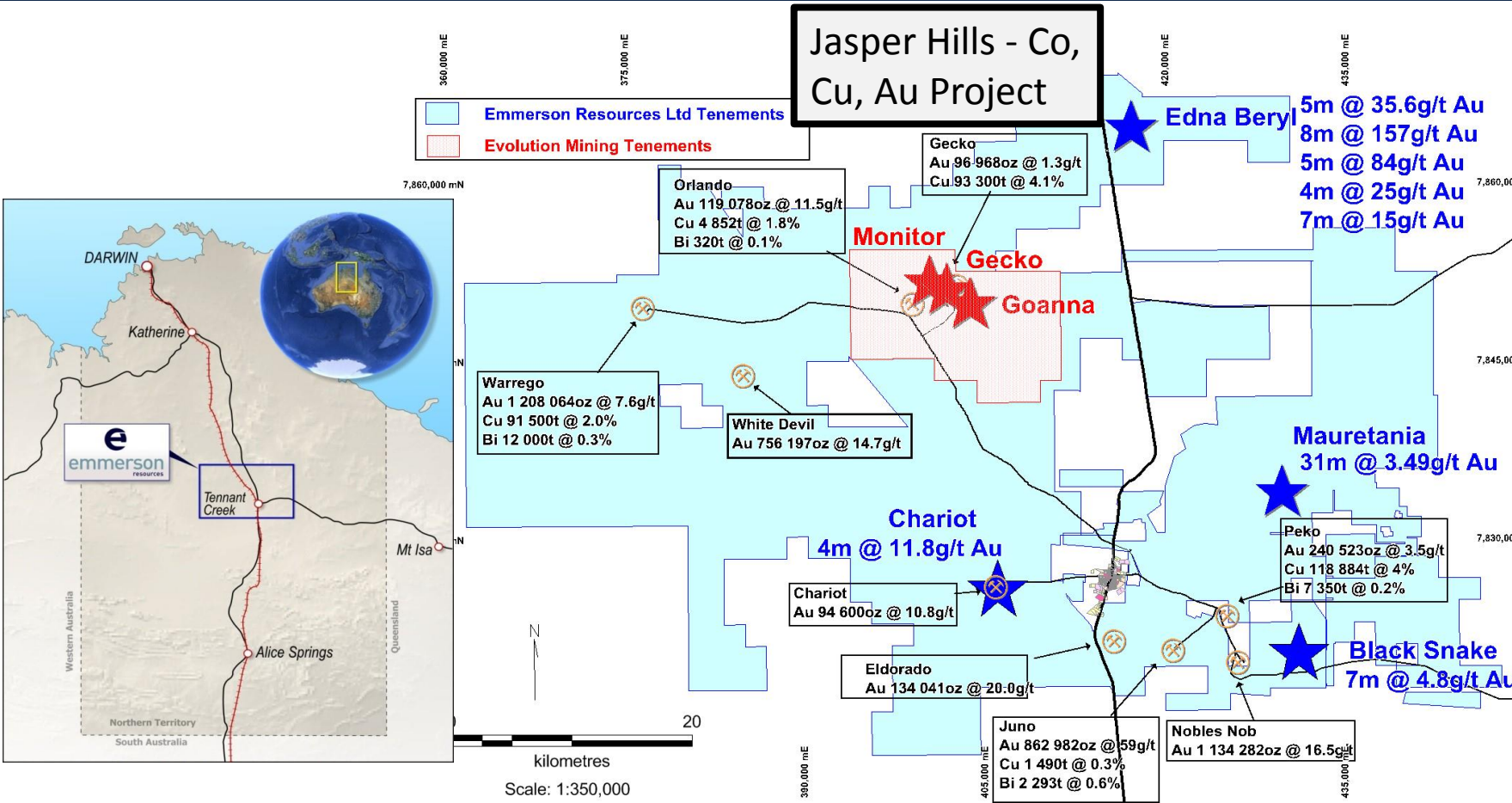


# Superior value from a strategy of discovery and production....

- Application of proprietary 2D and 3D targeting models to predict where the next discovery will be
- Use appropriate detection technologies to discover
- Maximise value – monetise existing resources, expand via near mine exploration
- Deal assets that are not value accretive for ERM



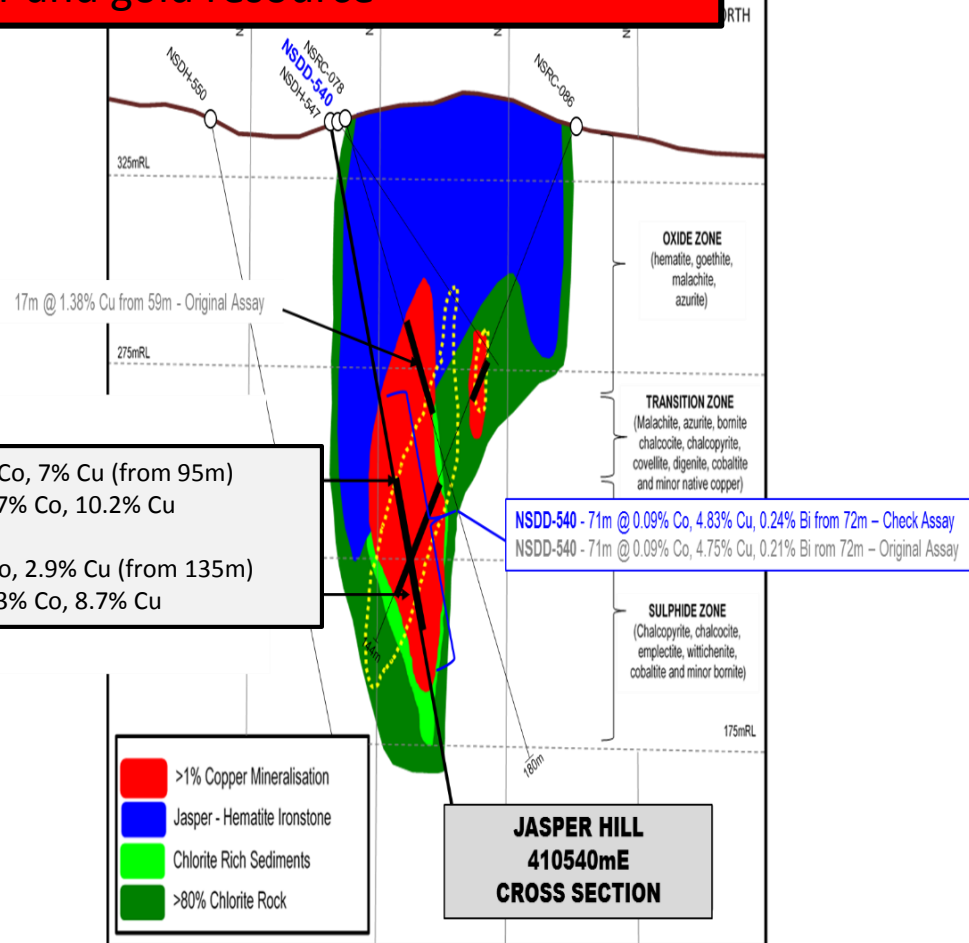
# Restructure of the Tennant Creek Project



- **Go for Gold, Cobalt and Copper** – Emmerson retains 2,600km<sup>2</sup> or 94% of gold assets including the small mines(light blue)
- Evolution own the Gecko-Goanna and Orlando Area (red stipple).
- Note some of the significant intersections reported during the term of the JV (dark blue)

# Jasper Hills.....how many more of these are there?

An exceptionally high grade, zoned cobalt, copper and gold resource

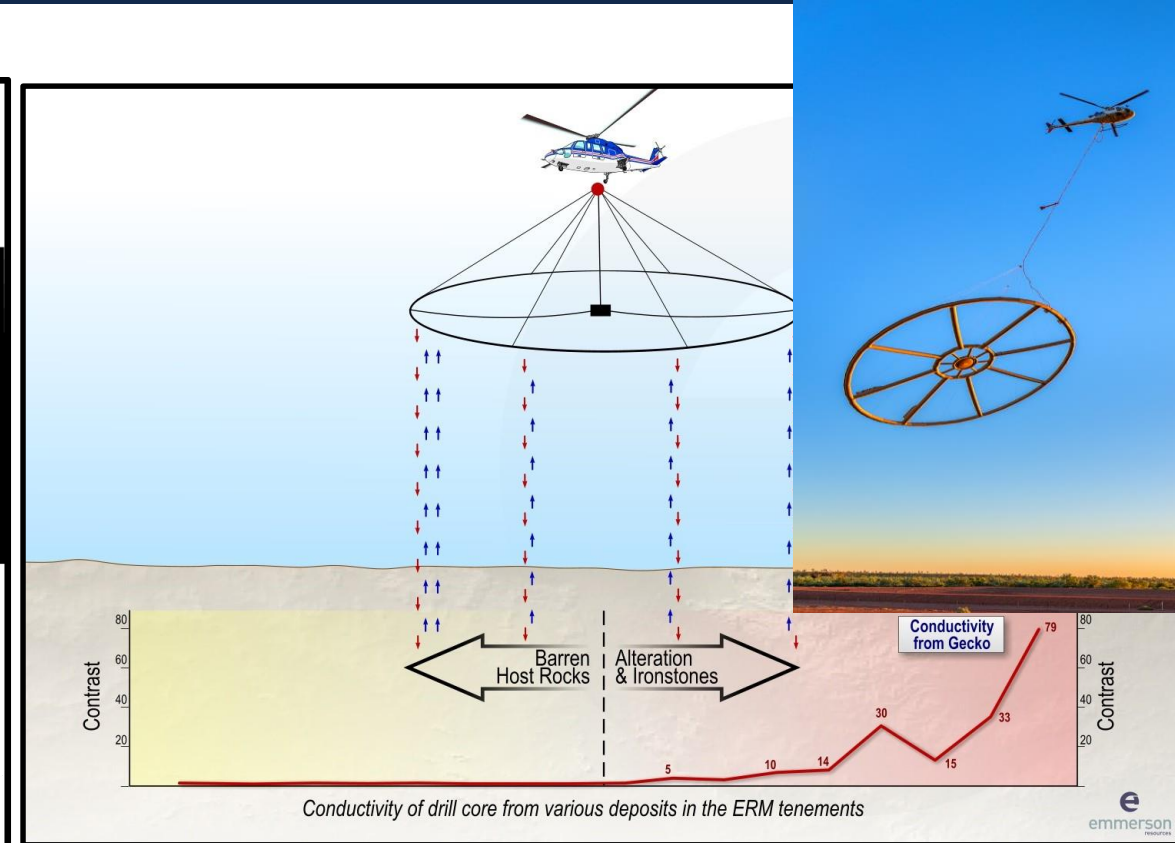
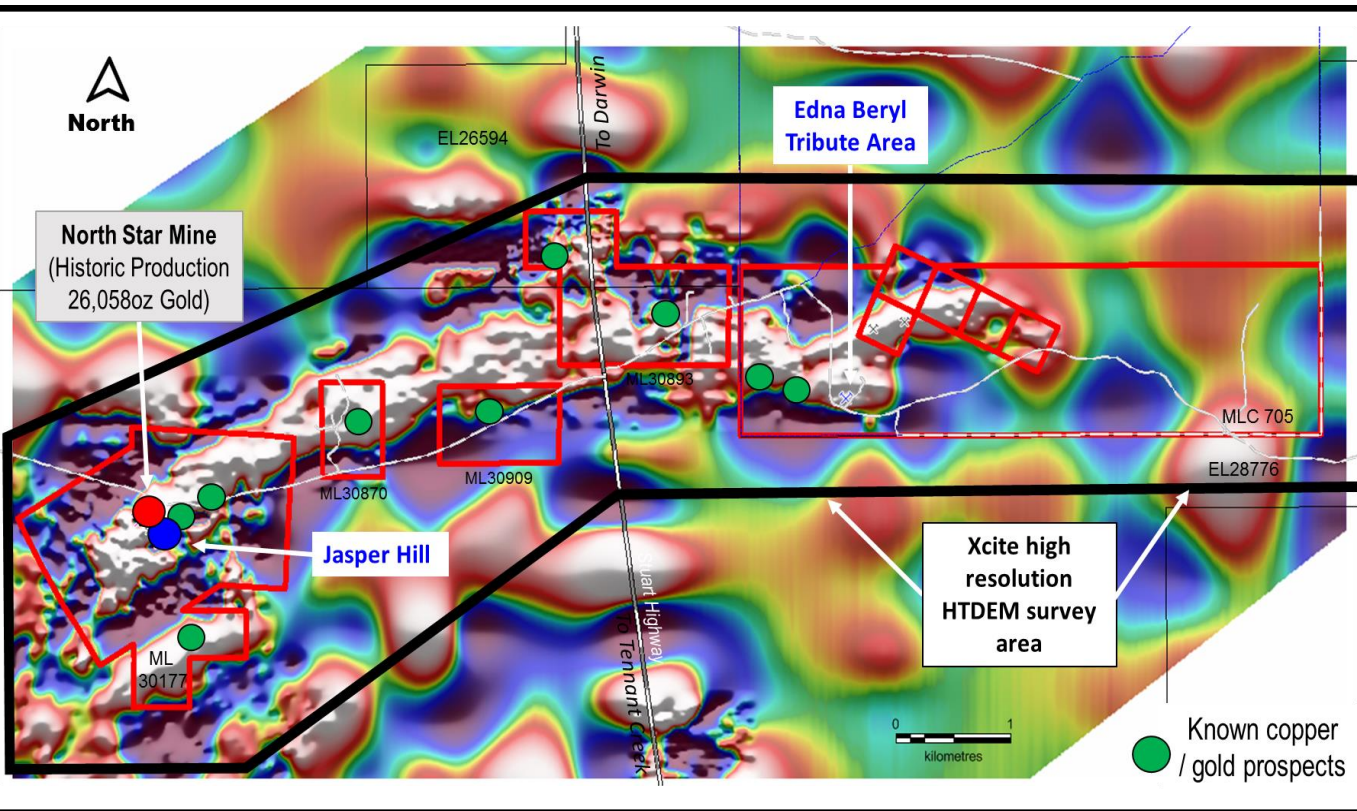


- **NSDH101:** 28m at 5.83g/t gold, 0.17% cobalt and 8.52% copper (**23g/t AuEq**) (from 108m) and includes:
  - 19m at 0.56g/t gold, 0.47% cobalt and 11.4% copper and
  - **2m at 50.1g/t gold and 10.5% copper (67g/t AuEq)**
- **NSDD100:** 11m at 0.22g/t gold, 0.18% cobalt and 2.56% copper (**8.0g/t AuEq**) (from 117 ) and includes:
  - 3m at 0.34g/t gold, 0.55% cobalt and 5.80% copper and
  - **1m at 0.48g/t gold, 1.07% cobalt and 5.71% copper**
- **NSDH547:** 23m at 0.14% cobalt and 7.04% copper (**14g/t AuEq**) (from 95m) and includes:
  - 4m at 0.37% cobalt and 10.2% copper and 1.35g/t gold (**25g/t AuEq**)
- **NSDH488:** 14m at 6.72g/t gold, 0.28% cobalt and 2.17% copper (**16g/t AuEq**) (from 284m) and includes:
  - 5m at 16.6g/t gold
  - **2m at 1.32% cobalt and 2% copper (31g/t AuEq)**
- **NSDD110:** 15m at 7g/t gold (from 295 to 310m) and includes:
  - **6m at 14.9g/t gold**

NOTE: Gold equivalent grades are based on metal prices of: copper US\$6,614/t, gold US\$1300 per oz and cobalt US\$88,750/t. Metal recoveries have not been applied in the gold equivalent calculation. The gold equivalent calculation is as follows;  $AuEq = Au \text{ grade} + (Cu \text{ grade} \times Cu \text{ price} + Co \text{ grade} \times Co \text{ price}) / (22.0462 \times 31.1035 \times Au \text{ price})$ . Prices as at 01 May 2018. It is the company's opinion that all elements included in the metal equivalent calculation have a reasonable potential to be recovered and sold. Metallurgical recovery information is not available at this stage. Reporting of metal equivalents may be misleading and additional test work is required to demonstrate probable metallurgical recoveries for cobalt, copper and gold.



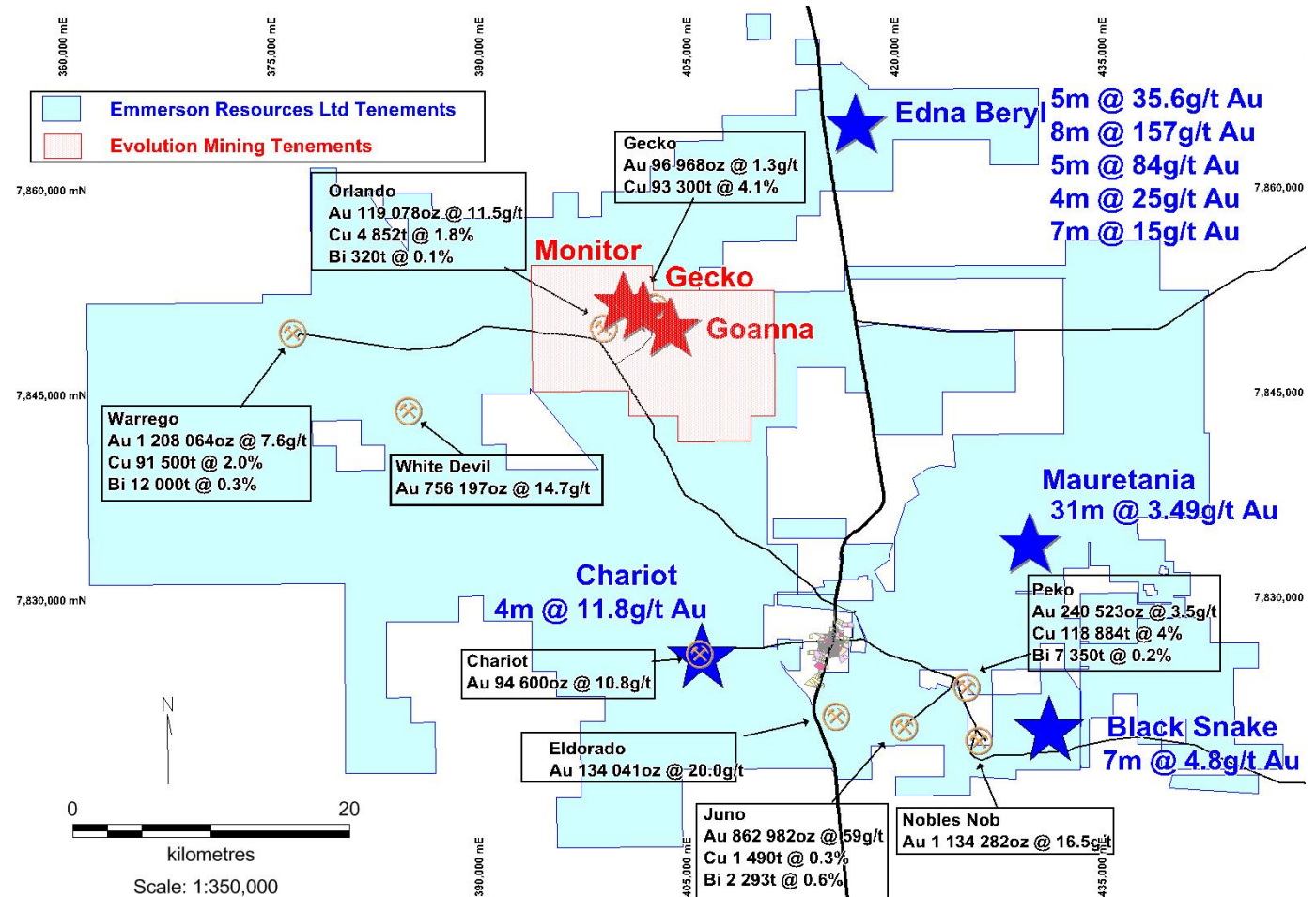
# The hunt for high grade cobalt, gold and copper....



First application of the NRG Xcite airborne geophysical system

# Drill program underway

- 2400m drill program
- Aimed at extensions to high grade gold
- Met samples for additional mines



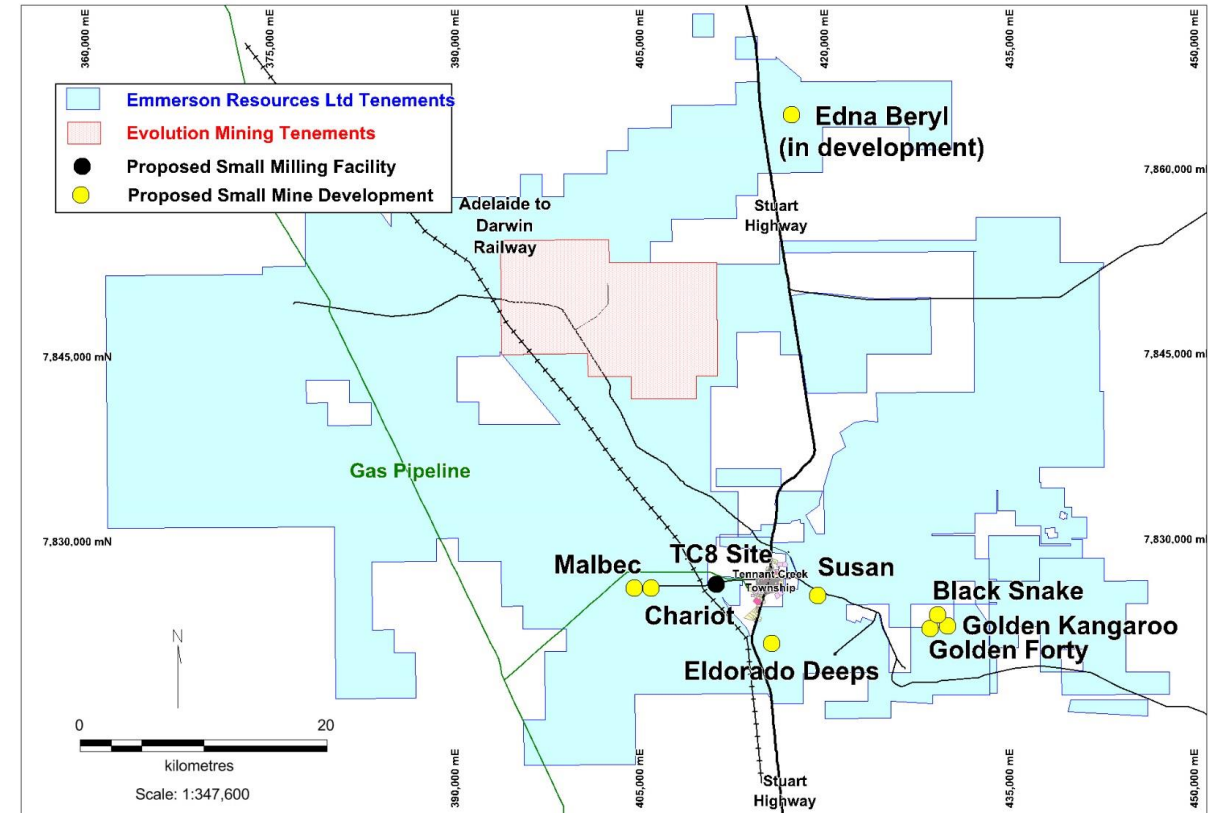


# Small mines

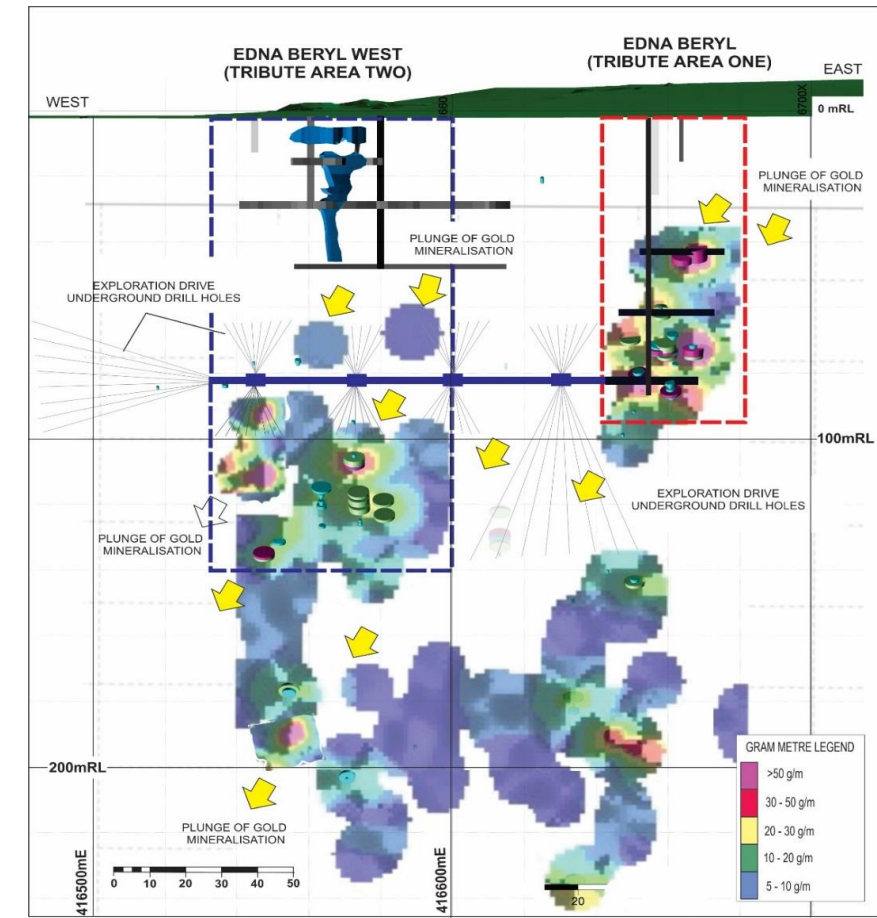
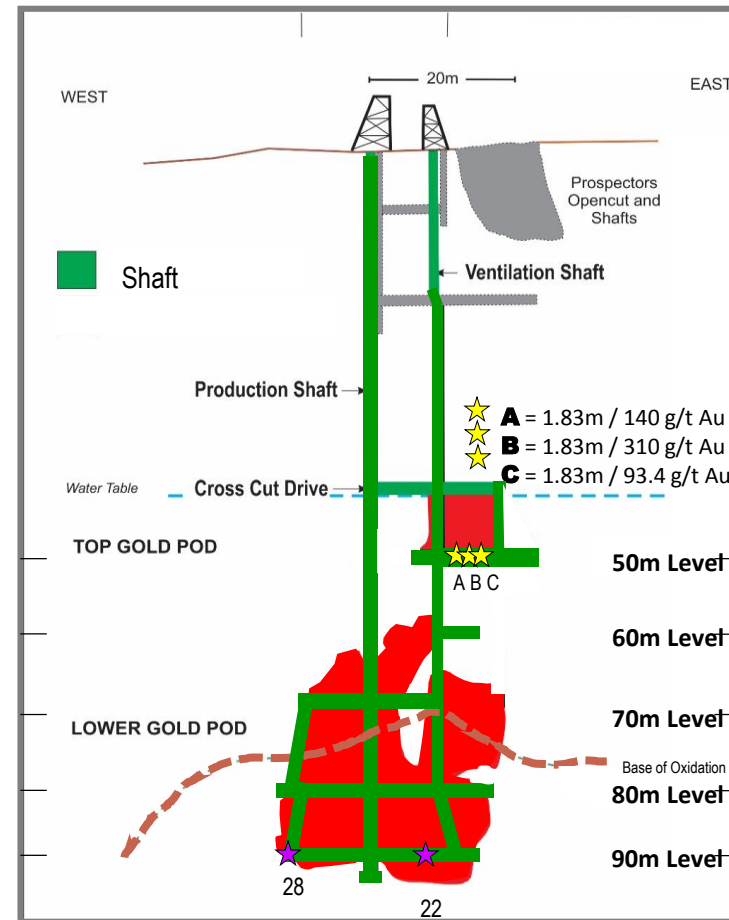
Risk free cash via Tribute Agreement from high grade resources



- Edna Beryl – currently mined under a tribute agreement
- Mitigates risk to ERM
- De-risks exploration & mining
- Terms via royalty:
  - first 5000ozs = 12%
  - > 5,000ozs = 17%
- Small Mines can grow to big mines!
- The largest is Chariot at ~100,000ozs at 17.4g/t gold



# Edna Beryl....is it a similar to Nobles Nob? (+1m ozs 50g/t gold)



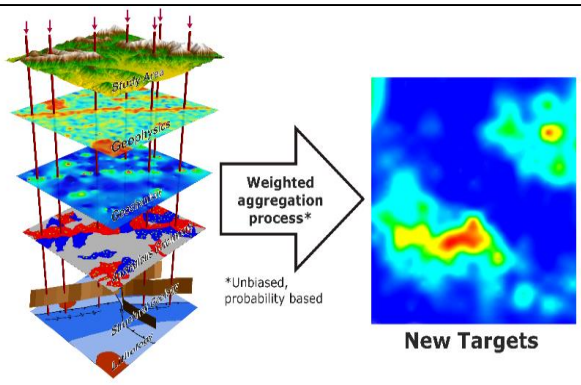


# Commanding Au-Cu position in NSW

Five new project areas spanning 2,400km<sup>2</sup>



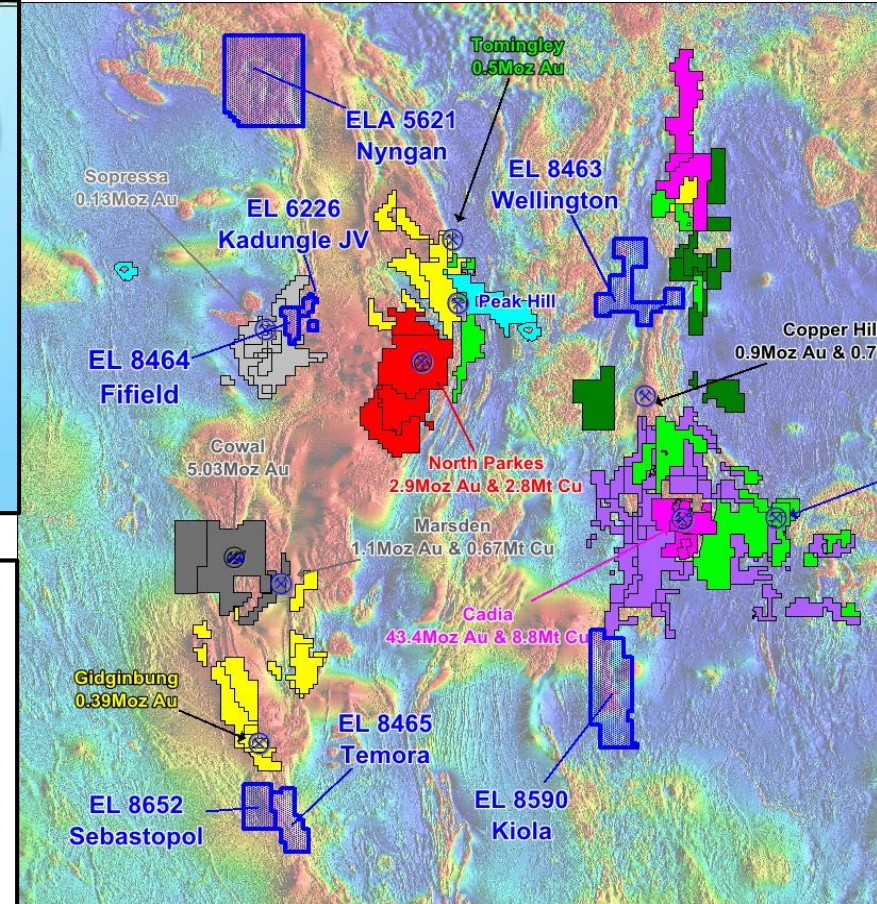
## Prediction



## Detection



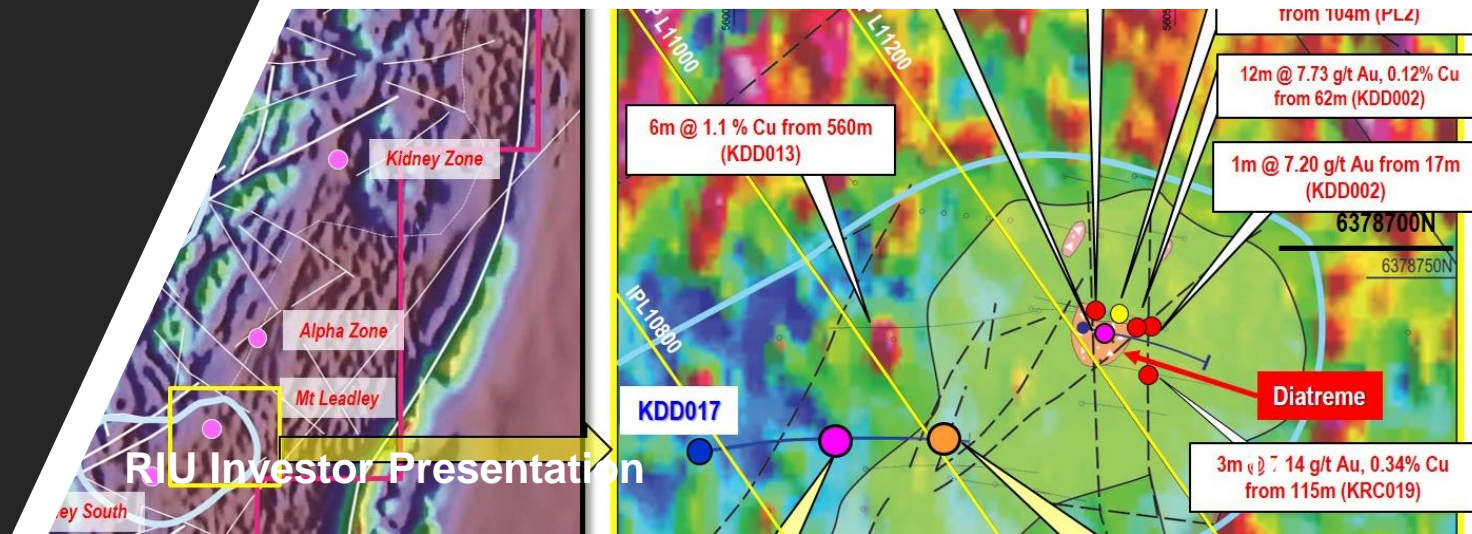
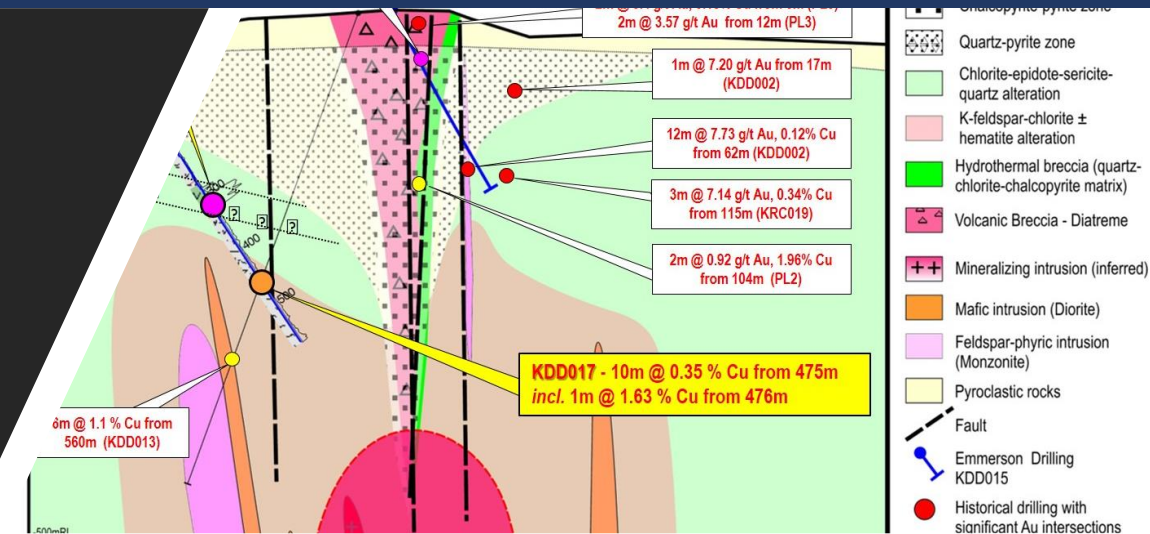
- Elephant Country
- Early stage, systematic exploration
- Promising early results incl. high grade copper and cobalt





# Kadungle Project - Now earnt 80% from Aurelia Metals

- Identified shallow epithermal gold
- Plus potential for deeper copper-gold
- Very large mineralized system over 4km<sup>2</sup>
- Ongoing Exploration



May 2018

RIU Investor Presentation



# Emmerson – a unique gold and copper explorer



- ✓ Tennant Creek Project restructured – sees Emmerson holding gold dominant projects and 2,600km<sup>2</sup> of prospective gold tenements plus 100% of the small high grade gold mines
- ✓ High grade cobalt, copper and gold project at Jasper Hills
- ✓ Exploration in Tennant Creek underway – drilling and AEM
- ✓ Second gold pour from the Tribute Area within the larger high grade Edna Beryl Gold Mine
- ✓ Emmerson has a commanding, 2,400km<sup>2</sup> ground position in NSW – based on new prediction models aimed at increasing the rate of discovery
- ✓ Other NSW projects undergoing systematic exploration – high grade Cobalt of up to 0.55% found in rock chips
- ✓ ERM remains well funded ~\$4.6m in cash, no debt and potential for risk free cash from small mines

# Competent person statement



The information in this report relating to Exploration Results is based on information compiled by Mr Steve Russell, who is a Member of the Australian Institute of Geoscientists and has sufficient exploration experience which is relevant to the style of mineralisation under consideration to qualify as a Competent Person as defined in the 2004 Edition of the 'Australasian Code for Reporting of Exploration Results, Mineral Resources and Ore Reserves'. Mr Russell is a full time employee of Emmerson Resources Ltd. Mr Russell consents to the inclusion in the report of the matters based on his information in the form and context in which it appears.

The information in this report which relates to Mineral Resources is based upon information compiled by Mr Ian Glacken, who is a Fellow of the Australasian Institute of Mining and Metallurgy. Ian Glacken is an employee of Optiro Pty Ltd and has sufficient experience which is relevant to the style of mineralisation and type of deposit under consideration and to the activity which he is undertaking to qualify as a Competent Person as defined in the 2004 edition of the Australasian Code for Reporting of Exploration Results, Mineral Resources and Ore Reserves. Ian Glacken consents to the inclusion in the report of a summary based upon his information in the form and context in which it appears.

Gecko, Goanna & Orlando Mineral Resource: see details in ASX announcement "New High Grade Drill Results & Upgrade to Resource Inventory" released on 18 October 2013.

Chariot Mineral Resource: see details in ASX announcement "High Grade Chariot Gold Resource" released on 28 November 2013

The information was first disclosed under the JORC Code 2004. It has not been updated since to comply with the JORC Code 2012 on the basis that the information has not materially changed since it was last reported.

The gold equivalent calculation assumes a gold price of US\$1,363/oz for gold and US\$3.31/lb for copper and makes no allowance for metallurgical recoveries. The totals may not sum exactly due to rounding.