



Riversgold Ltd

Sydney Resources Round-up

Highly prospective exploration projects in world-class gold terranes

ASX:RGL

RIU Sydney Resources Roundup - May 2018
Allan Kelly – Managing Director

Disclaimer/Forward Looking Statements

This presentation contains certain statements which constitute “forward-looking statements”.

These statements include, without limitation, estimates of future capital expenditure; statements regarding the expectation or description of the prospectivity of the Riversgold Limited tenements; future exploration and exploration potential.

Where Riversgold Limited expresses or implies an expectation or belief as to future events or results, such expectation or belief is expressed in good faith and on a reasonable basis. No representation or warranty, express or implied, is made by Riversgold Limited that the matters stated in this presentation will in fact be achieved or prove to be correct.

Forward-looking statements are only predictions and are subject to risks, uncertainties and other factors, which could cause actual results to differ materially from future results expressed, projected or implied by such forward-looking statements.

Such risks and factors include, but are not limited to: emergence of previously underestimated technical challenges; environmental or social factors

Except for statutory liability which cannot be excluded, Riversgold Limited, its officers, employees and advisers expressly disclaim any responsibility for the accuracy or completeness of the material contained in this presentation and exclude all liability whatsoever (including in negligence) for any loss or damage which may be suffered by any person as a consequence of any information in this presentation or any error or omission therefrom.

Riversgold Limited does not undertake any obligation to release publicly any revisions to any forward-looking statement to reflect events or circumstances after the date of this presentation, or to reflect the occurrence of unanticipated events, except as they may be required under applicable securities laws.

A person should not make any investment decision in relation to Riversgold Limited based solely on the information in this presentation. This presentation does not necessarily contain all information which may be relevant or material to the making of an investment decision.

The securities issued are considered highly speculative in nature.

Any investor should make their own independent assessment of the risks of an investment, and with regard to their own particular requirements and financial circumstances, prior to making any decision to invest in Riversgold Limited.

Competent Person Statement

The information in this document that relates to Exploration Results is based on information compiled by Mr Allan Kelly, a Competent Person who is a Member of The Australian Institute of Geoscientists. Mr Kelly is the Managing Director and CEO of Riversgold Ltd. He is a full time employee of Riversgold Ltd and holds shares and options in the Company.

Mr Kelly has sufficient experience which is relevant to the style of mineralisation and type of deposit under consideration and to the activity which he is undertaking to qualify as a Competent Person as defined in the 2012 Edition of the ‘Australasian Code for Reporting of Exploration Results, Mineral Resources and Ore Reserves’. Mr Kelly consents to the inclusion in the presentation of the matters based on his information in the form and context in which it appears.

Information on historical results for the Australian, Cambodian and Alaskan projects, including Table 1 information, is contained in the Independent Geologists Report in the Riversgold Replacement Prospectus dated 11 August 2017.

The Company confirms that it is not aware of any new information or data that materially affects the information in the original market announcements, and that the form and context in which the Competent Persons findings are presented have not been materially modified from the original market announcements.

Riversgold – Investment Highlights

New mineral explorer with all the key ingredients for success in place:

People	<ul style="list-style-type: none">▪ Experienced Board with track record of discovery, development and production
Projects	<ul style="list-style-type: none">▪ Highly prospective exploration projects in world-class gold terranes:<ul style="list-style-type: none">• Eastern Goldfields, WA• Tintina Gold Province, Alaska▪ Large IOCG target in South Australia▪ Applications next to 1Moz Okvau Deposit
Funding	<ul style="list-style-type: none">▪ Well funded following A\$6.1M IPO▪ A\$2.5M cornerstone investment from Evolution Mining Ltd
Upside	<ul style="list-style-type: none">▪ Tight capital structure and modest EV▪ Testing of drill targets in WA and Alaska to accelerate over next 6 months



*Yilgani drilling, November 2017
(7 days after listing)*

Corporate Snapshot

ASX Symbol	RGL
Shares on Issue	83.7M
Market Cap. (@ \$0.14)	\$11.7M
Cash (Mar 18 Qtr)	\$3.9M
Options (\$0.20)	22.2M

Major Shareholders	%
Greenwich Equities	17.0
Evolution Mining Ltd	15.1
Board/Management	10.1
Top 20 Shareholders	64.3

Experienced Board with track record of discovery, development and production

Rod Webster Non-Exec Chairman	<ul style="list-style-type: none"> Mining Engineer with >40 years experience Formerly Western Metals, First Quantum, Weatherly
Allan Kelly Managing Director	<ul style="list-style-type: none"> Geologist with >25 years experience Founding MD, Doray Minerals Ltd (2009-2016) Most successful IPO of 2010, "Explorer of the Year", 2011 AMEC "Prospector Award", 2014, for Andy Well discovery Funded and built 2 new gold mines in 4 years
Jeff Foster Non-Exec Director	<ul style="list-style-type: none"> Geologist with >30 years experience Founder and former Exec Director, Sirius Resources

Regular news flow since listing...

Date	ASX Release
10/10/2017	<i>Riversgold Commences Trading on ASX</i>
17/10/2017	<i>Kurnalpi Exploration Programs Underway</i>
30/11/2017	<i>Yilgani Drilling Outlines Large Regolith Gold Anomalies</i>
18/12/2017	<i>Yilgani Project - Exploration Update</i>
08/01/2018	<i>Yilgani Phase 2 Drilling Underway</i>
01/02/2018	<i>Riversgold Stakes High Grade Alaskan Gold Project</i>
05/02/2018	<i>Kurnalpi Projects Exploration Update</i>
07/02/2018	<i>Yilgani Drilling Outlines Potential Bedrock Gold Target</i>
26/02/2018	<i>High Grade Gold Acquisition and New JV at Kurnalpi North</i>
19/03/2018	<i>Kurnalpi Projects Exploration Update</i>
28/03/2018	<i>Yilgani Gravity Survey Confirms West Target Structure</i>
29/03/2018	<i>Kurnalpi South Gravity Survey Outlines Large Gold Target</i>
26/04/2018	<i>Yilgani Drilling Outlines 2.6km long gold target</i>
01/05/2018	<i>Key Approvals Received for Kurnalpi North Targets</i>

Project Portfolio

Highly prospective gold projects with potential for year-round news flow



**Alaska
(IRG)**

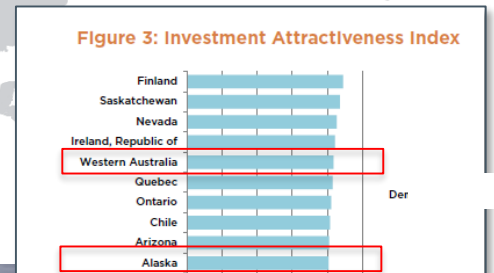
**Cambodia
(IRG)**

**Kurnalpi
(Orogenic gold)**

**Churchill Dam
(IOCG)**



2018 Fraser Inst. Mining Survey



IRG – Intrusion-Related Gold
IOCG – Iron Oxide Cu-Au

Extensive Drill Target Pipeline

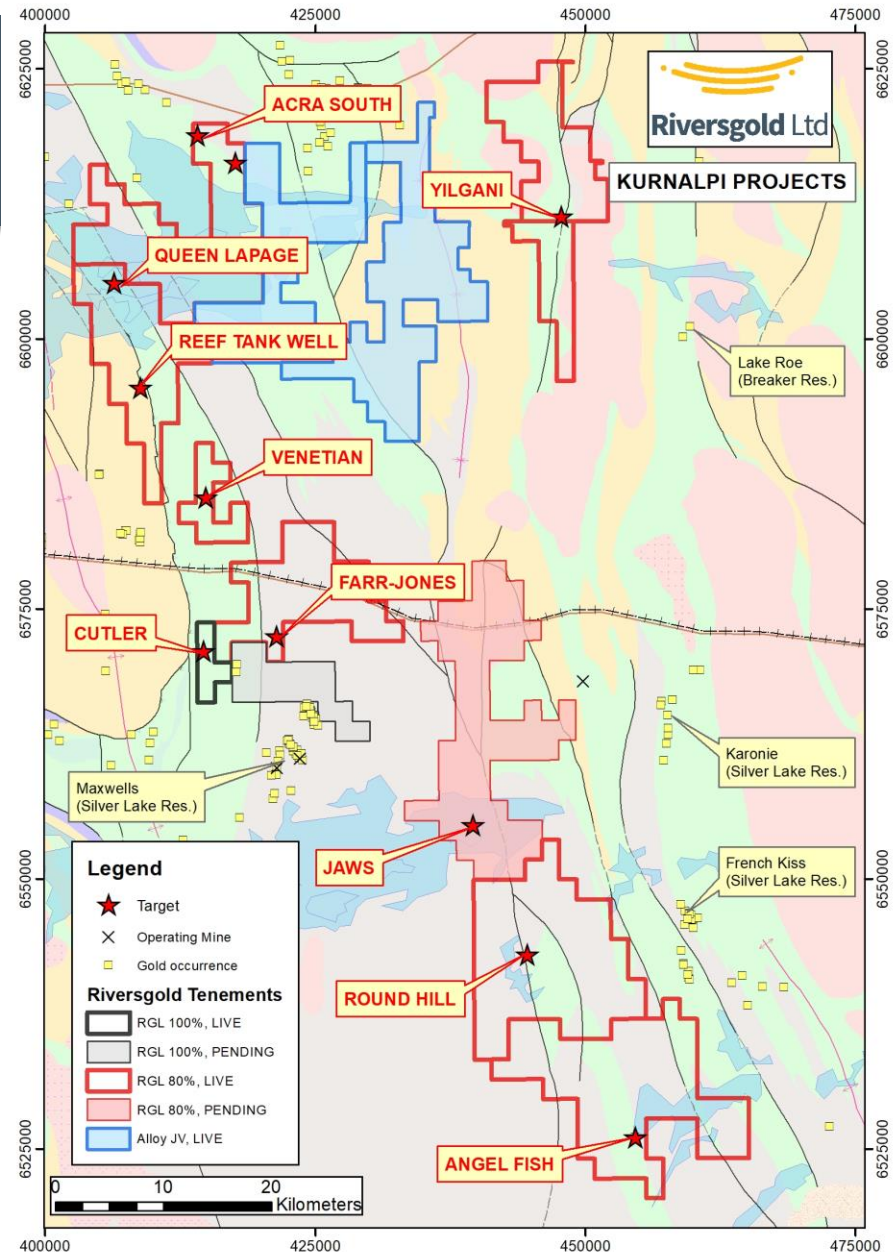
Project	Target Generation	Drill Testing	Advanced Exploration	Resource Delineation
Yilgani		East Target North Target	West Target	
Kurnalpi North	Acra South Lady of the Lake Reef Tank Well <i>Randell Hill*</i> Alloy JV	Farr-Jones Queen Lapage Venetian	Cutler	
Kurnalpi South	Round Hill Angelfish Lake	Jaws		
Alaska	Gemuk Kisa Breccia West End North Quicksilver	Luna/Luna East Quicksilver Skarn targets Golden Dyke		
South Australia	<i>Burt Lagoon*</i>	Churchill Dam		
Cambodia	<i>Antrong*</i> <i>Kang Roland Sth*</i>			

Targets to be drill tested within next 3-6 months

* Tenement applications awaiting grant

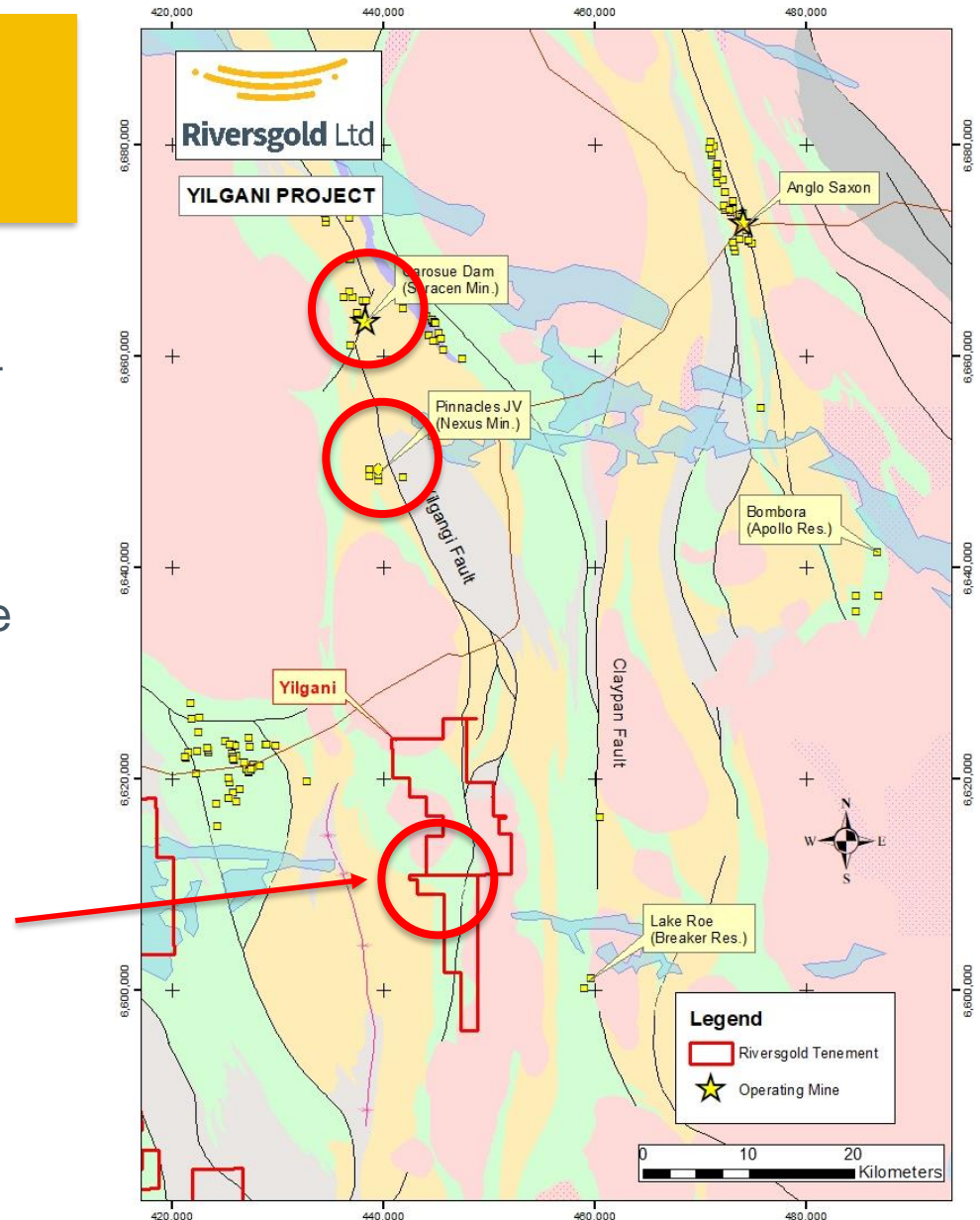
Kurnalpi Projects

- Large strategic land position 100km east of Kalgoorlie-Boulder, WA
- **Gold exploration hot spot:**
 - Breaker – Lake Roe
 - Apollo - Bombora
 - Kairos – Roe Hills
- Proximity to existing transport and processing infrastructure
- **Drill ready targets** along known mineralised trends
 - Numerous auger/surface geochemical gold anomalies
 - **Limited drilling >100m deep**



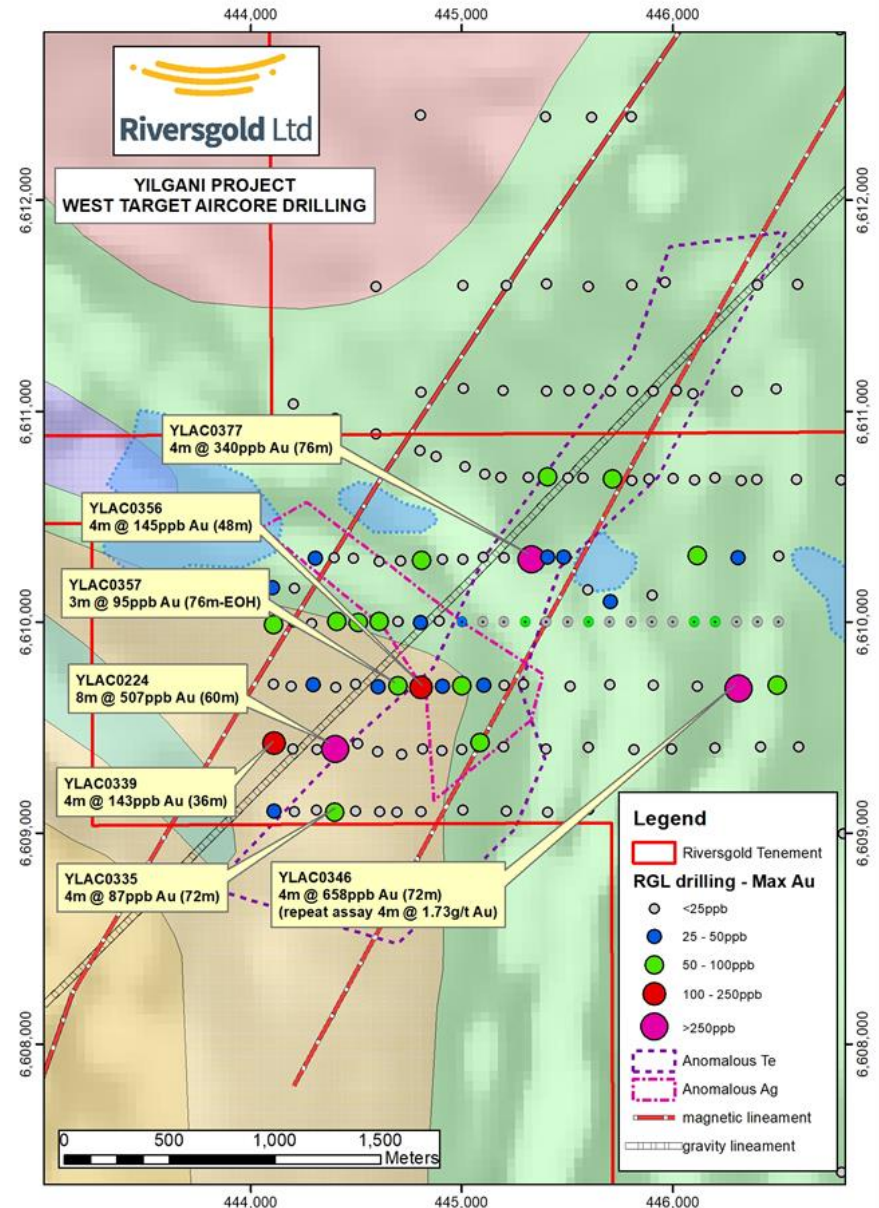
Yilgani Project

- 25km strike of “**Yilgani Fault**” – regional structure which hosts **Carosue Dam** and **Pinnacles** gold deposits
- Possible folded repetition of Lake Roe Greenstone Belt?
- Large regolith gold anomalies outlined by aircore drilling
- **West Target** - bedrock gold target in similar structural setting to Carosue Dam and Pinnacles



Yilgani - West Target

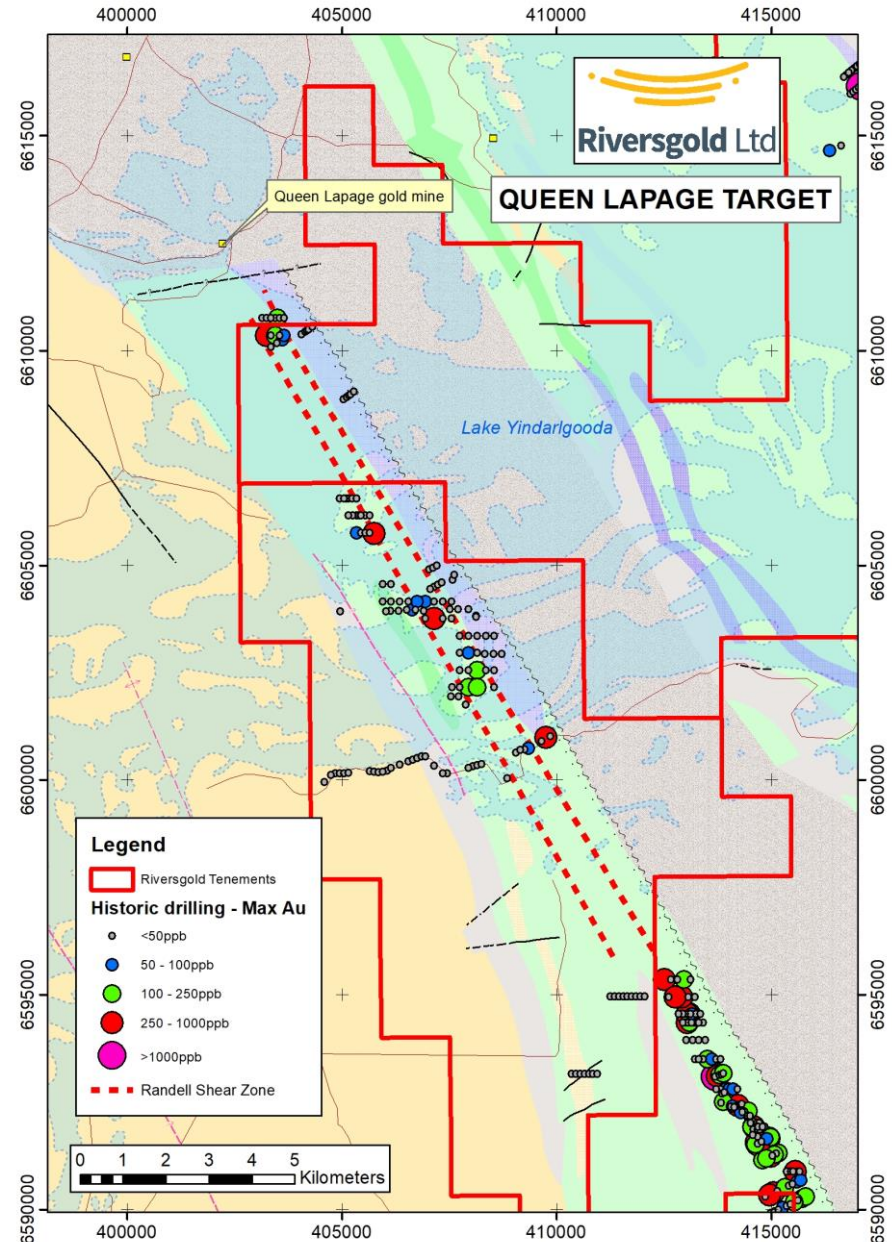
- Bedrock gold target associated with NE-trending structure – confirmed by recent gravity survey
- **Structural setting analogous to Carosue Dam and Pinnacles**
- 2.6km long zone of anomalous gold and pathfinder elements:
 - **8m @ 507ppb Au (YLAC0224)**
 - **4m @ 145ppb Au (YLAC0356)**
 - **4m @ 340ppb Au (YLAC0377)**
- Infill gravity and drilling planned



*See ASX Releases dated 7 February 2018, 28 March 2018 and 26 April 2018

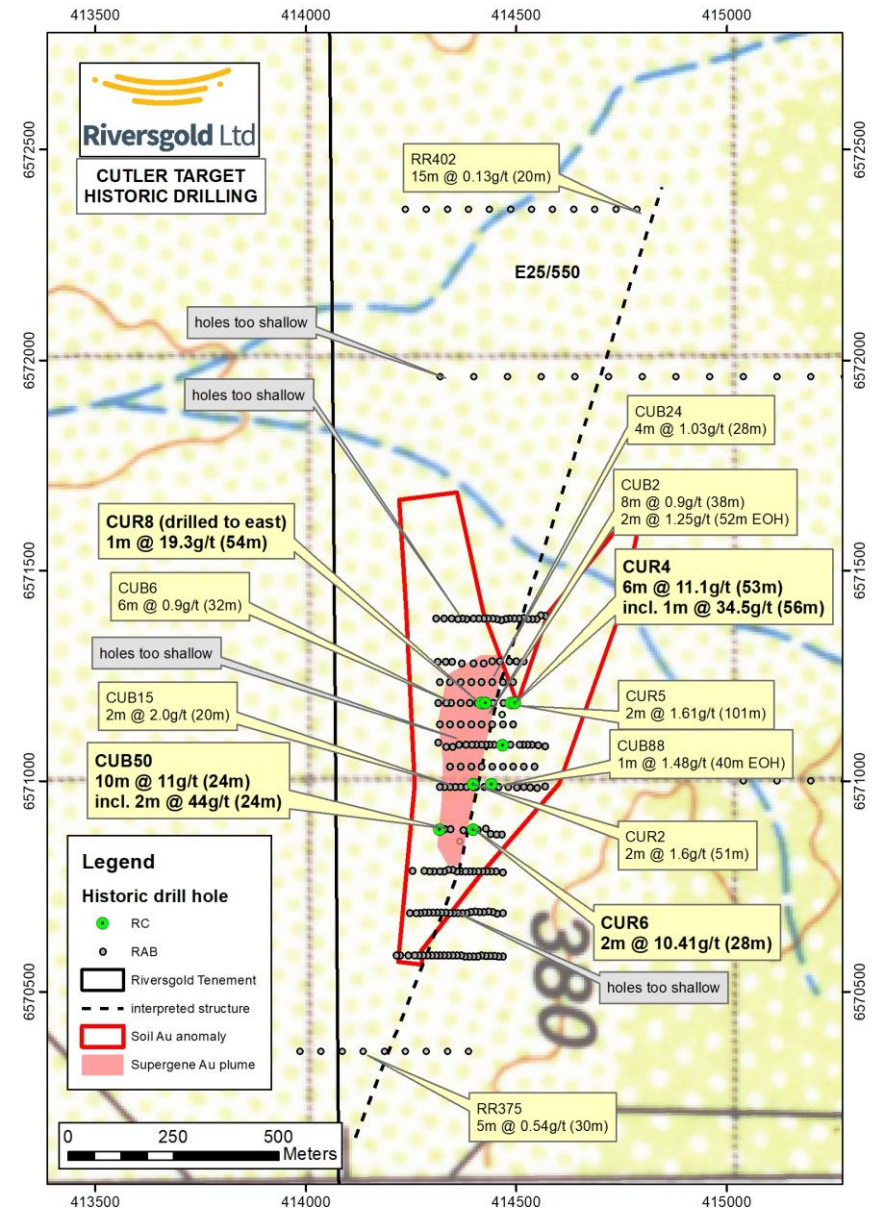
Queen Lapage

- 15km segment of mineralised “Randell Shear Zone” – mostly under shallow salt lake cover
- Along strike from Queen Lapage open pit gold mine
- Anomalous gold in sporadic historical drilling – open at depth and along strike
- Numerous NE-trending faults - felsic/sedimentary rocks untested
- Heritage survey completed and POW approved
- **Lake drilling planned mid-2018**



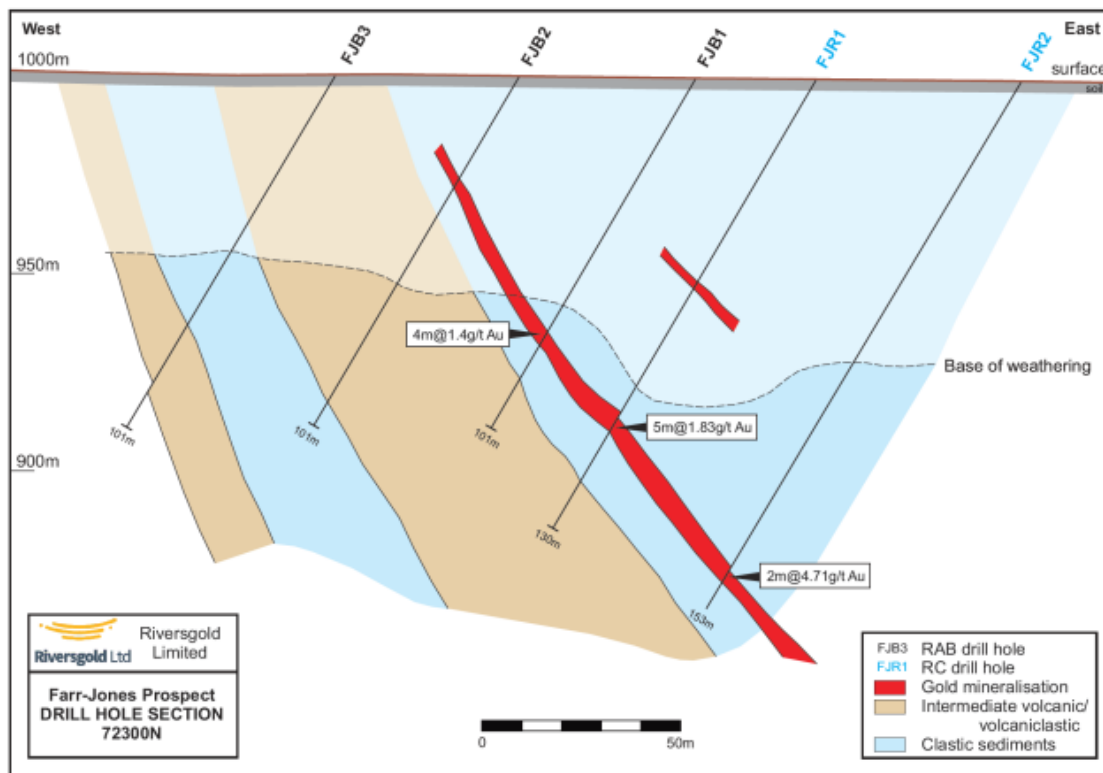
Cutler (RGL 100%)

- 2km long zone of supergene gold in shallow RAB drilling:
 - 10m @ 11.0g/t Au (CUB50)
 - 2m @ 10.4g/t Au (CUR6)
 - 1m @ 8.21g/t Au (CUR8)
- Interpreted structure only tested with RC drilling on one section:
 - 6m @ 11.1g/t Au (CUR4)
 - 1m @ 2.32g/t Au (CUR4)
 - 2m @ 1.61g/t Au (CUR5)
 - 1m @ 19.3g/t Au (CUR8)
- RC drilling underway



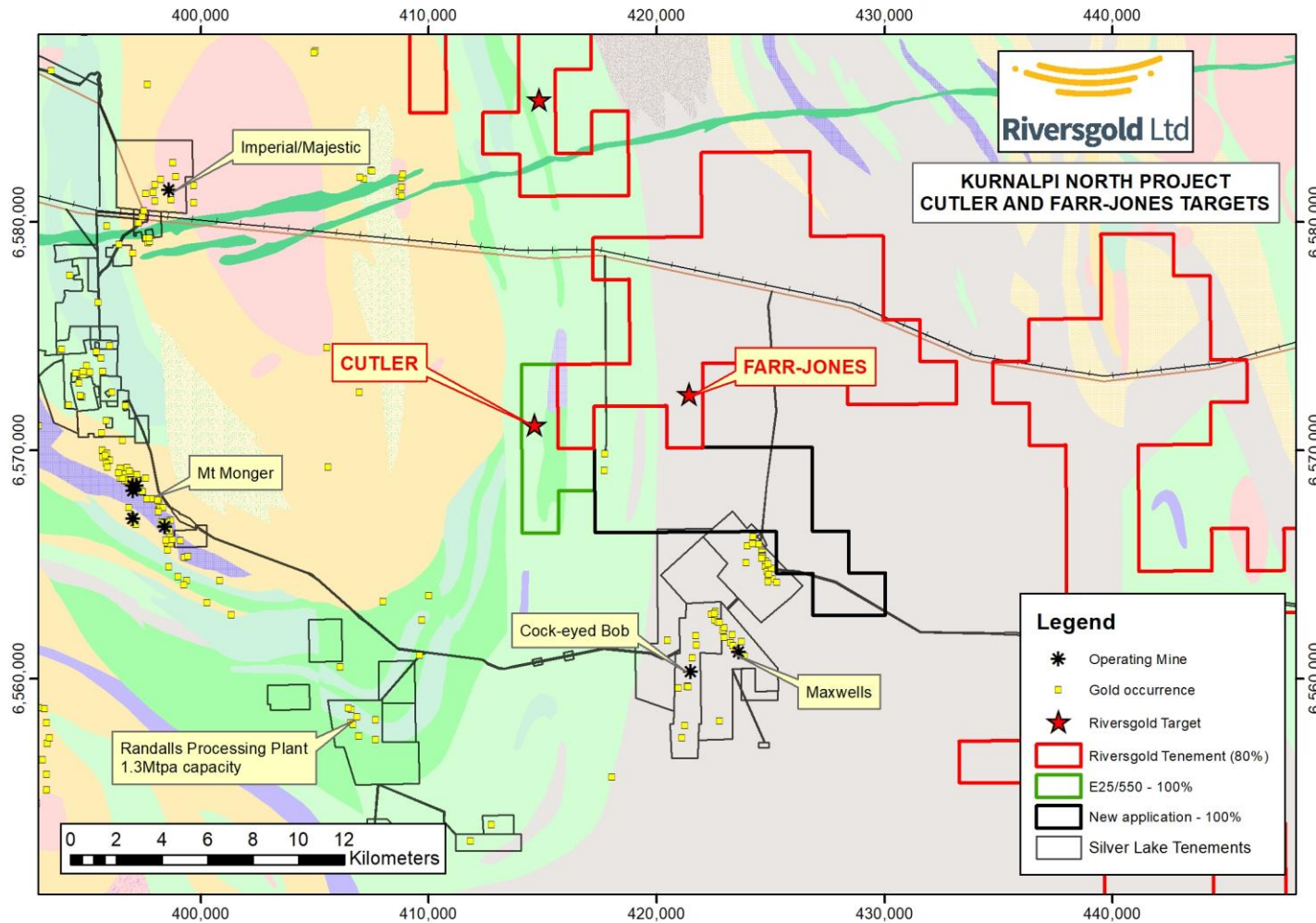
*See ASX Release dated 26 February 2018, 1 May 2018

Farr-Jones



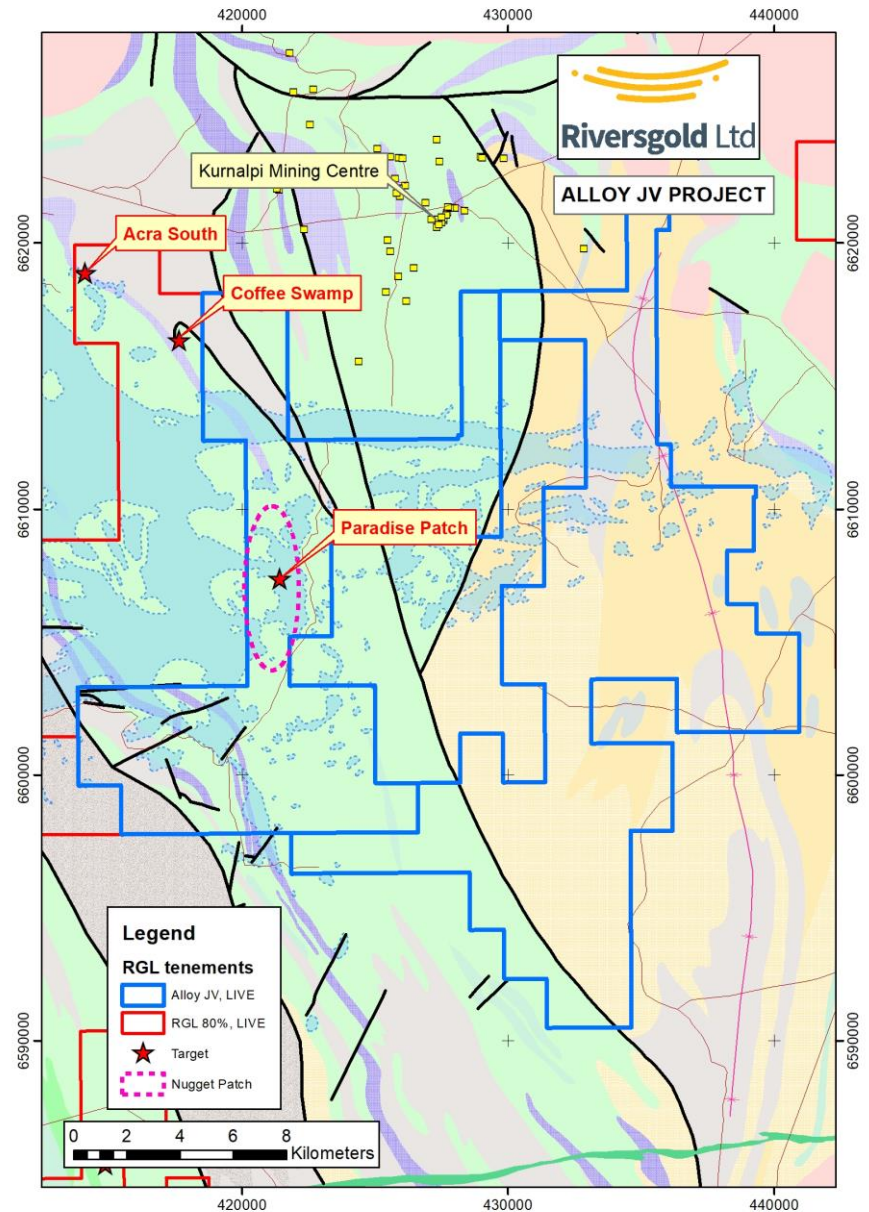
- Single section tested soil anomaly in **1992**
- Mineralised quartz vein in black shale extends >130m down dip:
 - **4m @ 1.40g/t Au**
 - **5m @ 1.89g/t Au**
 - **2m @ 4.71g/t Au**
- **Open at depth and untested along strike**
- **RC drilling planned once POW approved**

Ideally positioned for potential development



Alloy JV

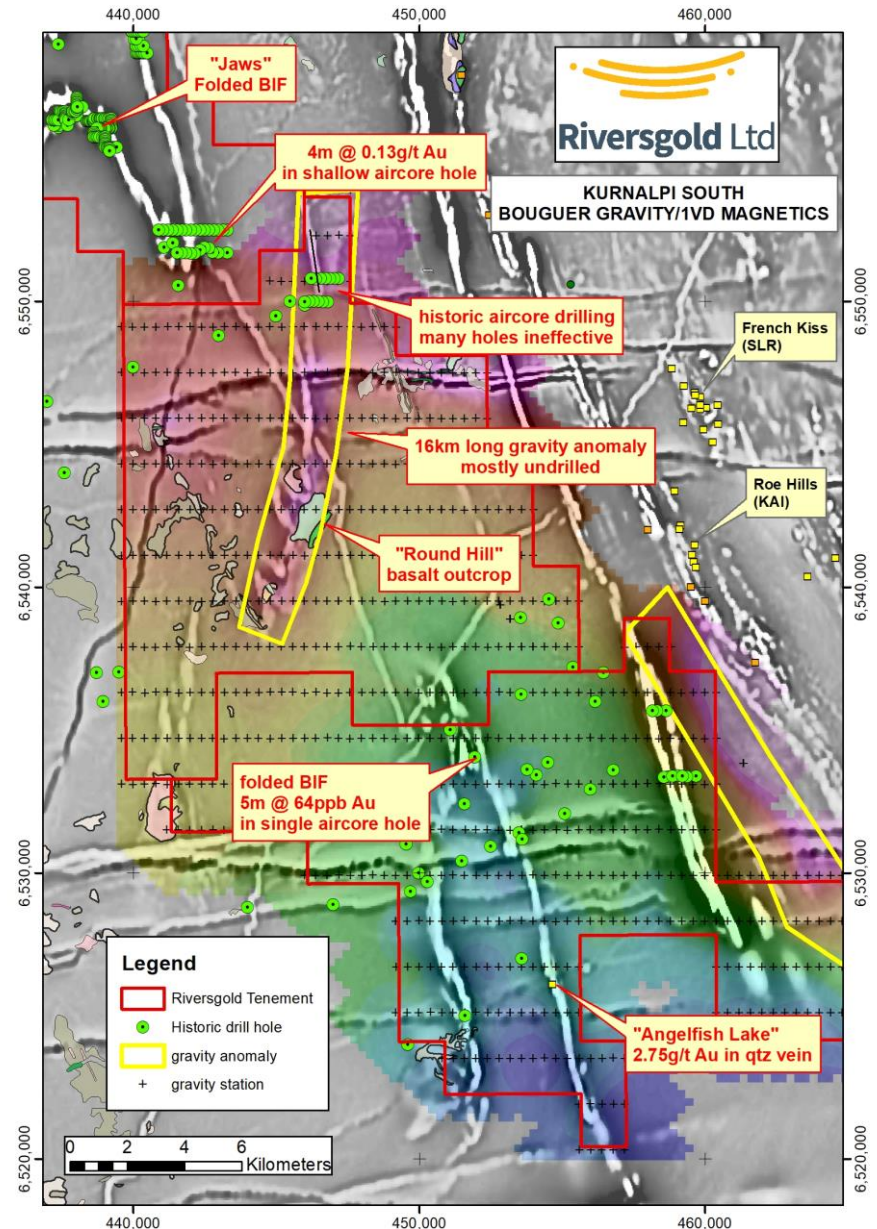
- 2 EL's on major structures
- Simple JV Structure*
- **Paradise Patch Target:**
 - Prospectors located nuggets on lake over 3km of strike (2003)
 - Intense sulphide and carbonate alteration in andesitic basalt
 - Anomalous gold results from shallow aircore drilling (2003-06)
 - Open to NW - along strike from existing Acra South/Coffee Swamp targets



*See ASX Release dated 26 February 2018

Kurnalpi South

- Large land position with numerous surface Au anomalies/minimal drilling
- **Jaws**
 - Folded BIF along strike from Maxwells/Cockeyed Bob deposits
- **Round Hill**
 - 16km gravity anomaly related to buried mafic rocks
 - Mostly undrilled
 - Infill gravity planned
- **Angelfish Lake**
 - **2.75g/t Au** in quartz vein outcrop
 - **Not drilled**

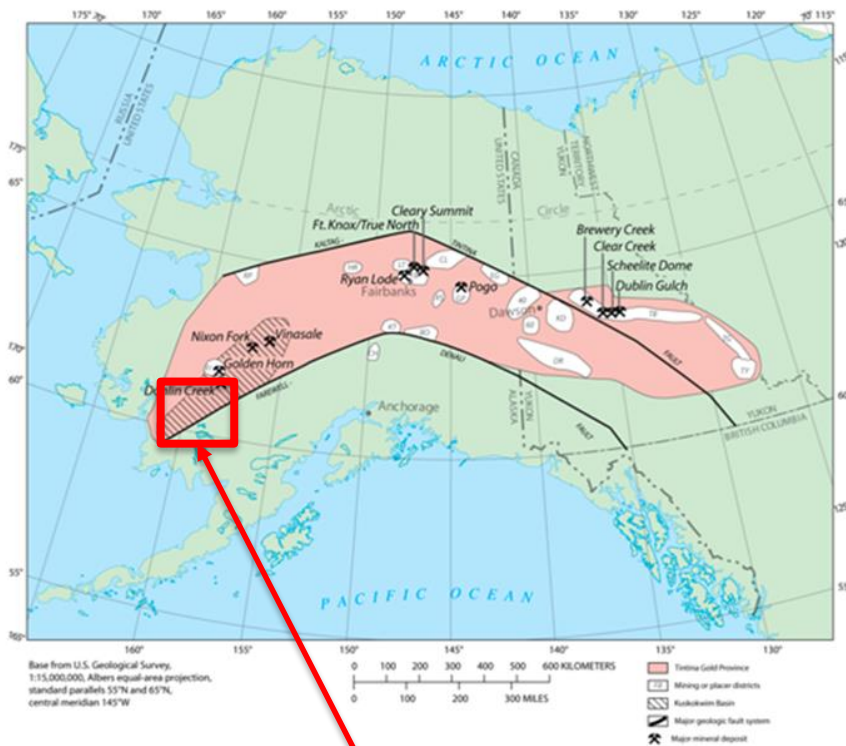


*See ASX Release dated 29 March 2018

Intrusion-Related Gold (IRG)

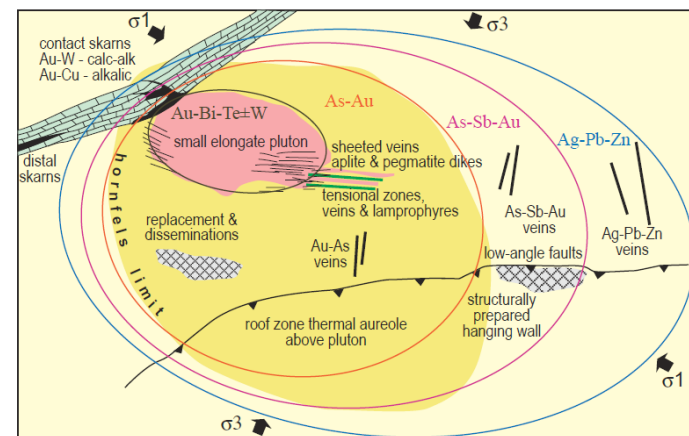
Tintina Gold Province

(the “birthplace” of Intrusion-Related Gold)



Riversgold project area

- Can be very large
 - Donlin Creek (39Moz M+I)
 - Fort Knox (7Moz prod’n)
 - Pogo (280kozpa prod’n)
- Can also be high grade
 - Nixon Fork (18g/t Au)
 - Pogo (12g/t Au)

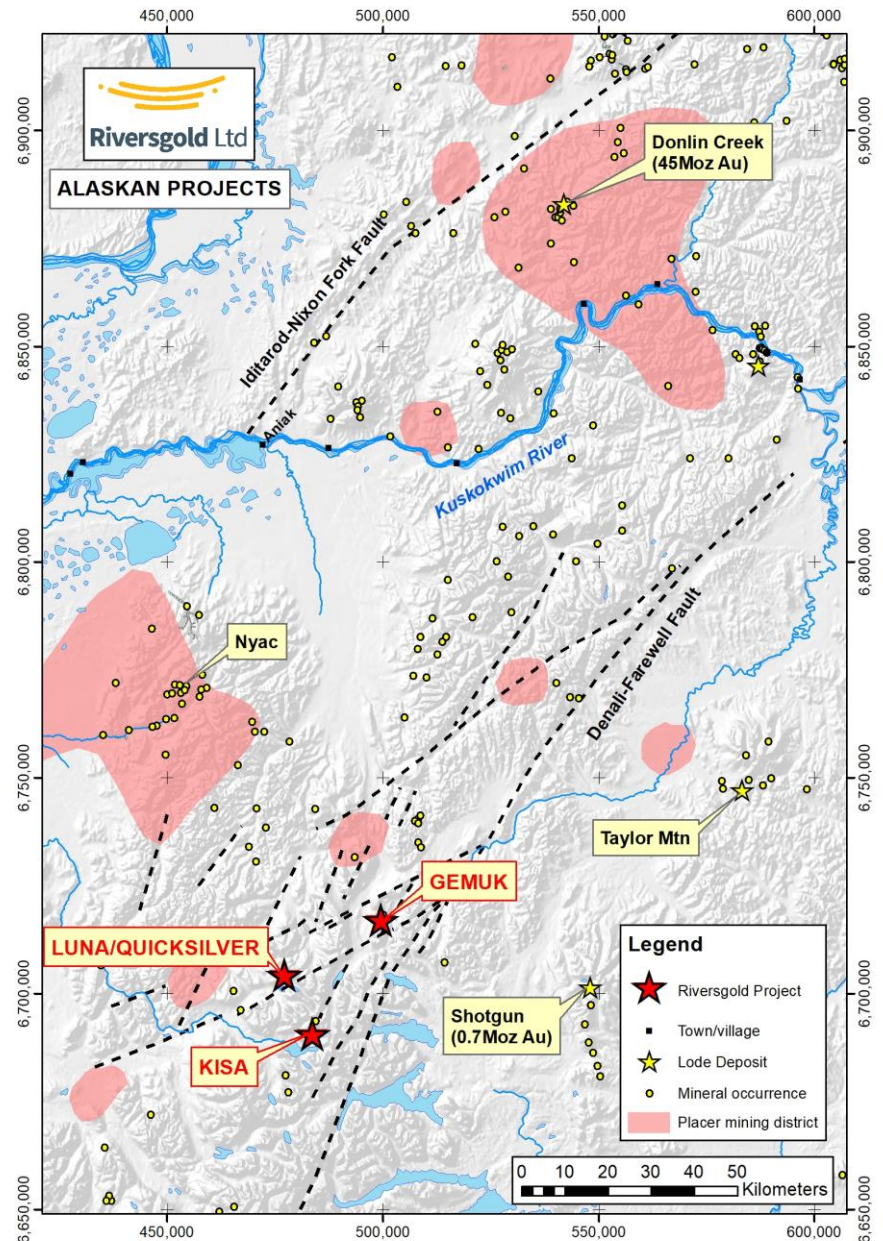


Generalised Intrusion-related gold model (Hart et al 2002)

SW Alaska Projects

- **100% owned** State of Alaska mining claims over 3 large IRG targets
 - **Luna/Quicksilver**
 - **Kisa**
 - **Gemuk Mountain**
- 190km south of giant Donlin Creek gold deposit (**39Moz Au M+I**)
- Historic placer gold mining area
- Dominant land position on splay fault off Denali-Farewell Fault
- Proprietary regional geochemistry and geophysics datasets

Potential for a large, high-grade intrusion-related gold (IRG) deposit



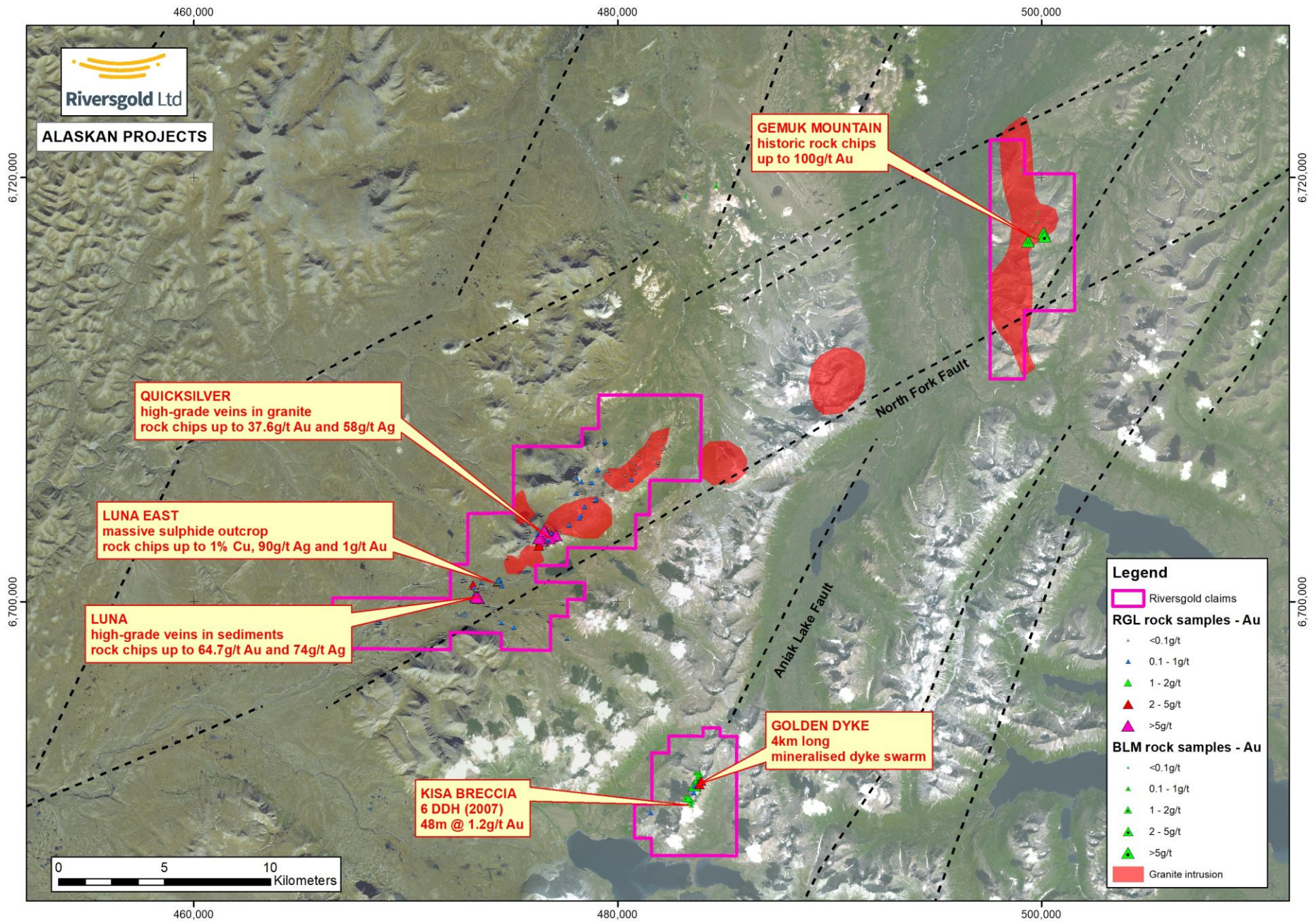
The Alaskan Opportunity



Riversgold project area

- **World-class gold endowment*:**
 - 2.5% of world's reserves
 - 40% of USA's resources
 - 2nd largest producer in USA
- Established mining industry
 - 6 producing mines
 - 8 major projects underway
- Stable Federal/State governments
- Clearly defined land status and permitting processes
- Supportive Native Corporations
- **Top 10 in annual Fraser Institute Global Mining Survey**

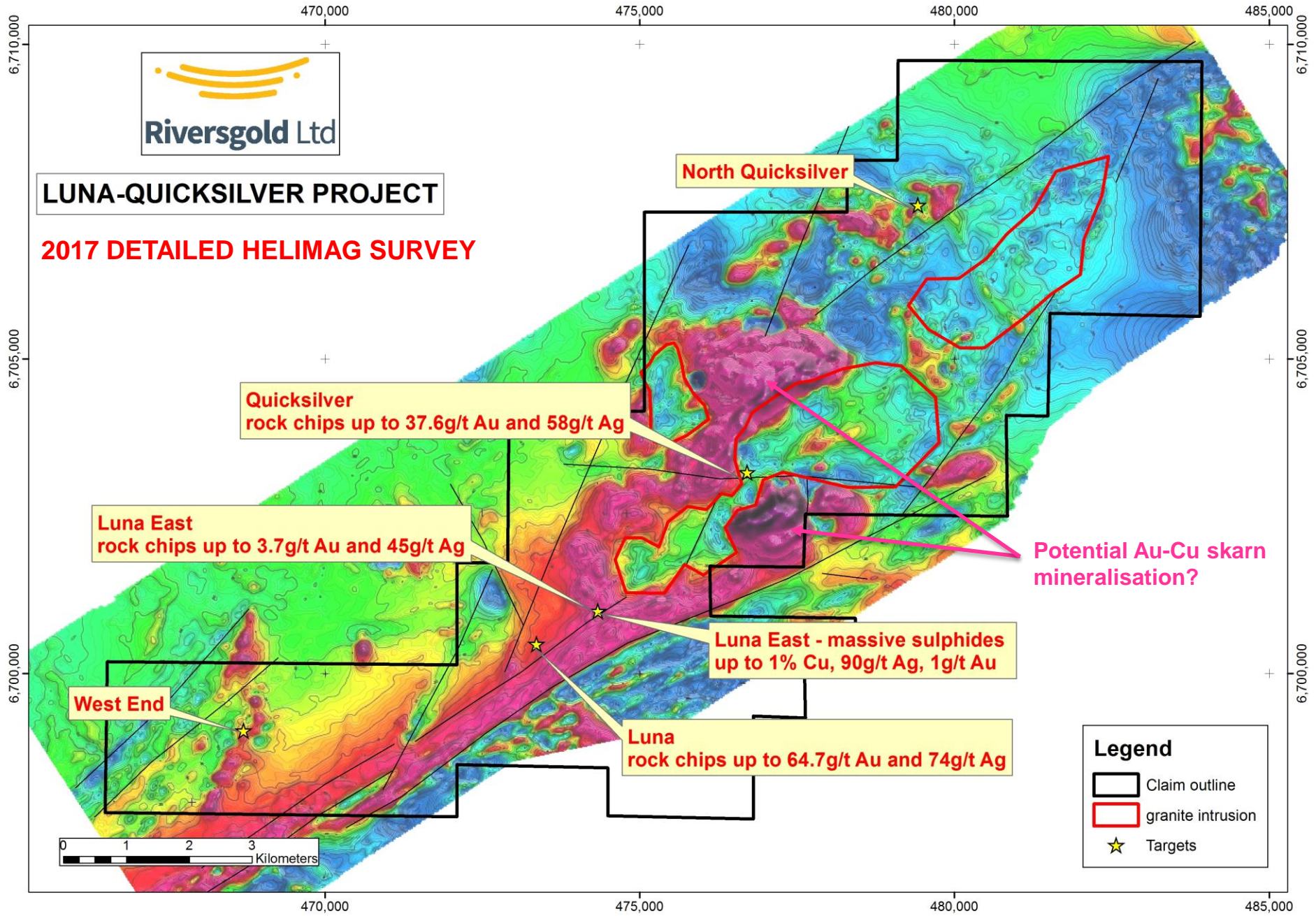
**(USGS 2016 world estimates; DGGs Alaska 2016 data)*





LUNA-QUICKSILVER PROJECT

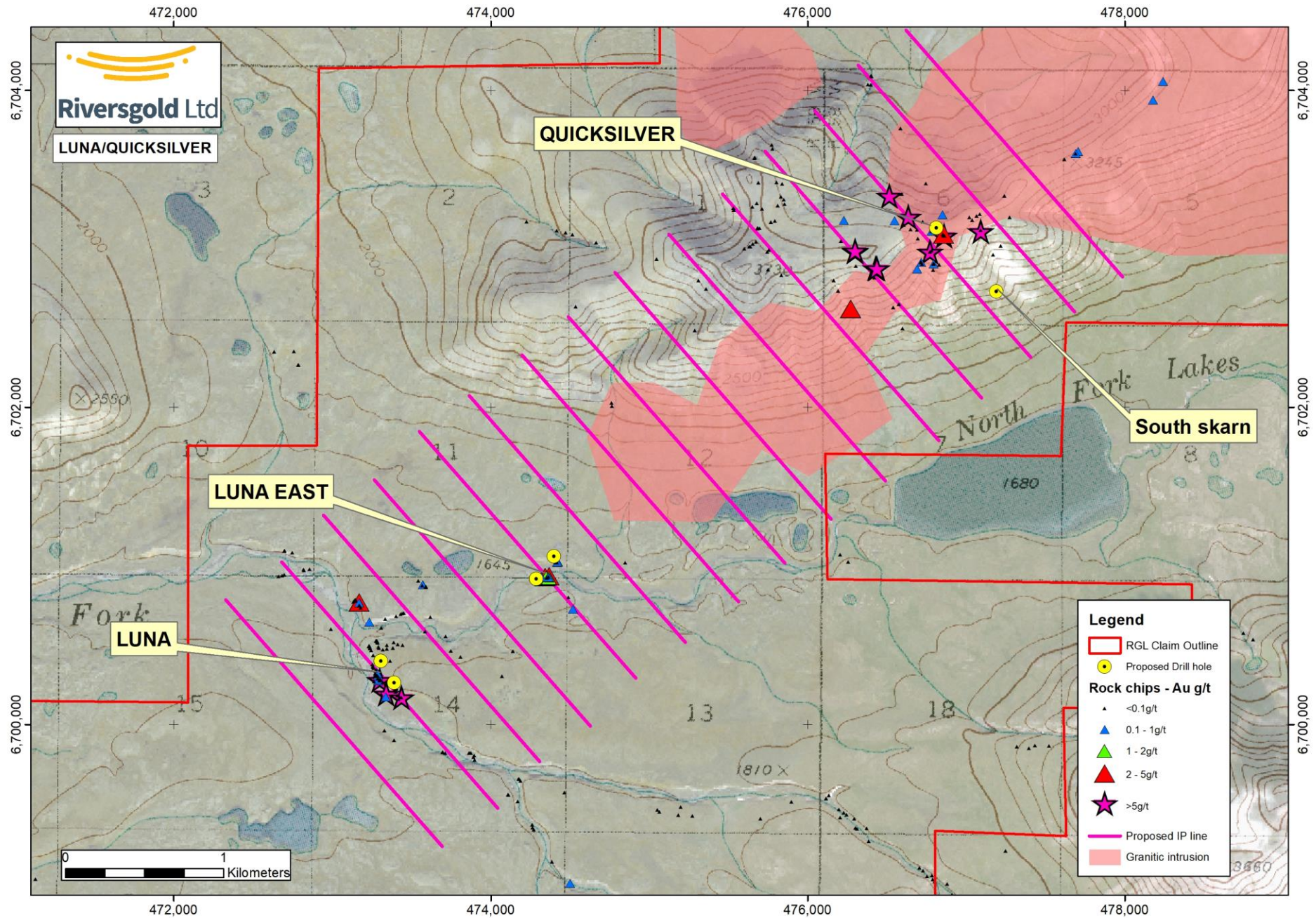
2017 DETAILED HELIMAG SURVEY



2018 Alaska Field Season Objectives

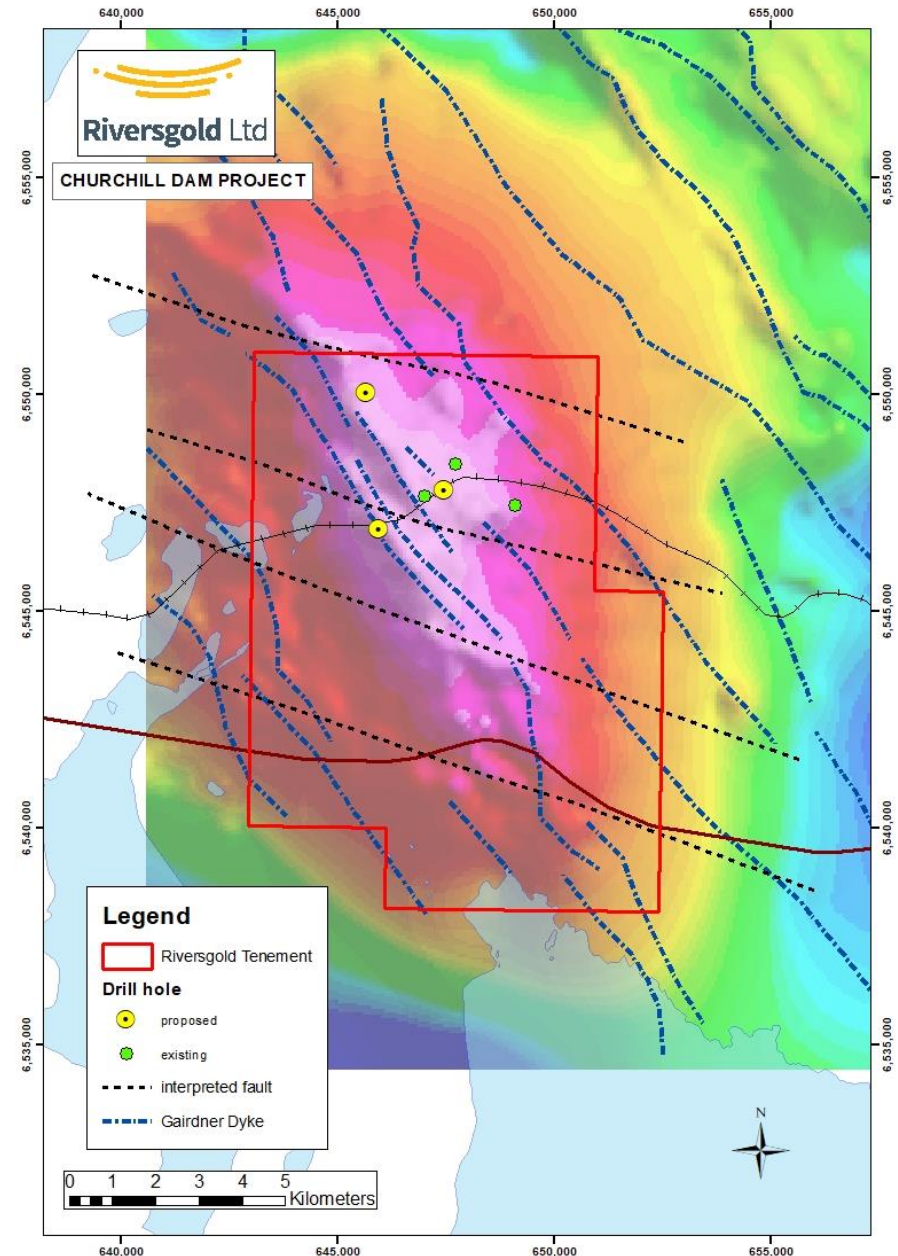
Planning well advanced for Jul-Aug field programme

Project	
Luna/Quicksilver	<ul style="list-style-type: none">▪ Grid IP/soil survey▪ Project-scale mapping/rock chip sampling▪ Diamond Drilling:<ul style="list-style-type: none">• Luna• Luna East• Quicksilver• Skarn targets
Gemuk	<ul style="list-style-type: none">▪ Mapping▪ Rock-chip/soil sampling▪ (Helimags)
Kisa	<ul style="list-style-type: none">▪ Diamond Drilling:<ul style="list-style-type: none">• Golden Dyke

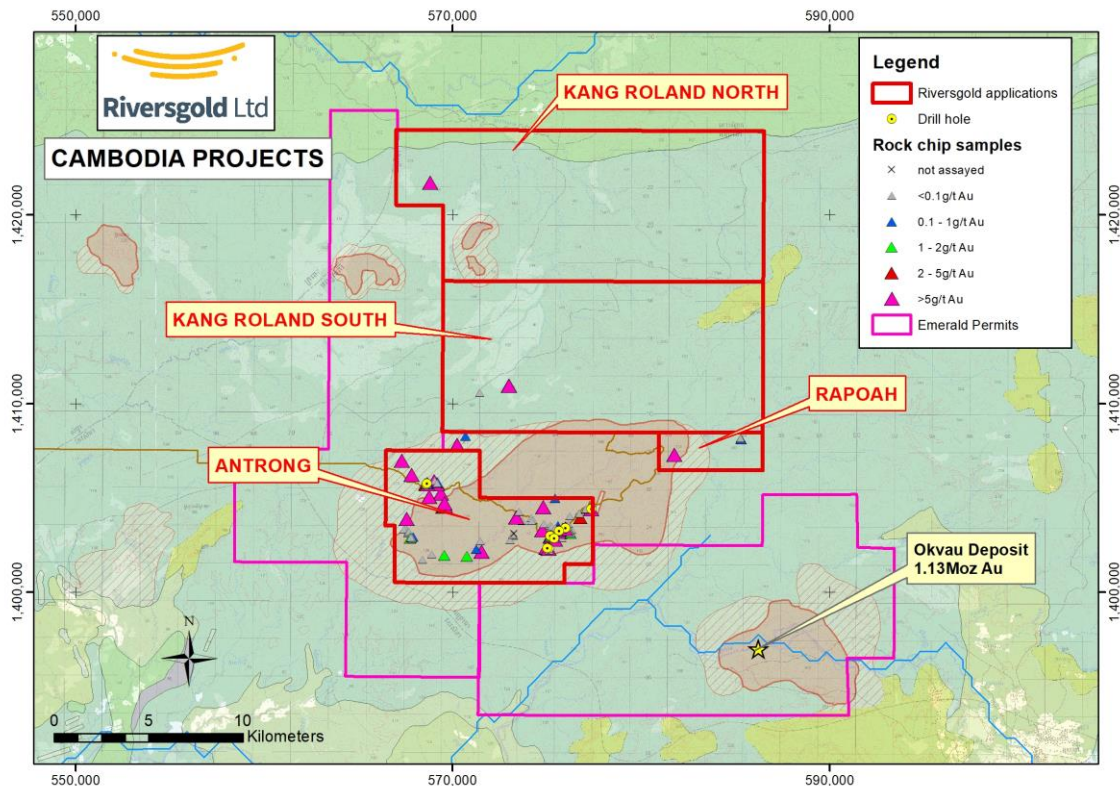


Churchill Dam, SA

- Large IOCG target 90km south of Olympic Dam
- **Highest amplitude part of 60km² gravity anomaly remains untested**
- Hematite-altered Gawler Range Volcanic basement in previous diamond drilling (similar to Acropolis IOCG deposit)
- Anomalous Cu-Au-U-REE's
- Basement shallows to west
- **Plans to drill test in 2H 2018 – permitting underway**



Cambodia IRG Applications



- Applications for Mineral Exploration Licences adjacent to **1.13Moz Okvau** gold deposit
- Numerous Au-As-Sb-Bi soil anomalies
- Multiple high-grade rock chips $>5\text{g/t Au}$
- Shallow high-grade diamond drill results:
 - **Antrong**
 - **O'thmey**

Target testing accelerating in 2018...

	2018		
Project	Jun	Sep	Dec
Yilgani	GPX	aircore +/-RC	aircore +/-RC
Kurnalpi North	Cutler RC Farr-Jones RC Queen Lapage	Venetian	
Kurnalpi South	GPX	GC	aircore
Alaska		GC/GPX Luna/Quicksilver Kisa	
South Australia			Churchill Dam
News flow	✓	✓	✓

GC – geochem

GPX - geophysics

D – drill program (subject to approvals)

Riversgold - Summary

- Highly prospective exploration projects in world-class gold terranes:
 - Strategic landholding in Eastern Goldfields with numerous targets
 - Two Intrusion-Related Gold (IRG) terranes (Alaska and Cambodia)
- Experienced Board with track record of successful exploration, discovery, development and production
- Well funded (A\$3.9M cash @ 30 March 2018)
 - Strategic cornerstone investor – Evolution Mining Limited
- **Substantial upside with drilling accelerating over next 6 months**
 - **2.6km long bedrock gold target identified at Yilgani**
 - **Numerous drill programmes planned for Kurnalpi targets**
 - **New high-grade gold projects acquired in WA and Alaska**
 - **First ever drilling of Luna-Quicksilver in mid-2018 season**
 - **Plans to drill large IOCG target in South Australia in 2H 2018**



Riversgold Ltd

www.riversgold.com.au

