



# Traka Resources Limited

ABN: 63 103 323 173

---

21 May 2018

Company Announcements Office  
ASX Limited  
Level 4, 20 Bridge Street  
SYDNEY NSW 2000

## **INVESTOR PRESENTATION**

Attached is a copy of a presentation on the company's activities to be made to investors.

P C Ruttledge  
Company Secretary



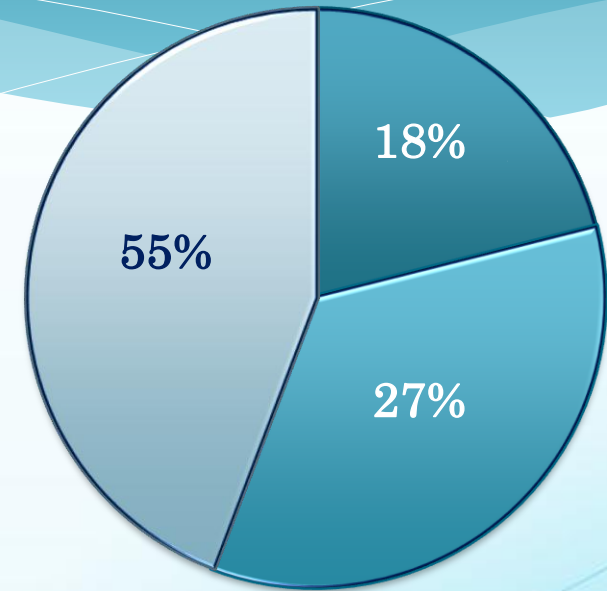
## Investor Presentation May 2018



# Corporate & Capital Overview

Total Shares on Issue	331.3m
Cash on Hand (at 18 May 2018)	\$1.7m
Market Cap @ \$0.044 per share	\$14.6m

## Shareholders



## Board of Directors

**Neil Tomkinson** – Chairman – Lawyer

**Patrick Verbeek** – Managing Director – Geologist

**Joshua Pitt** – Non-Executive Director – Geologist

**George Petersons** – Non-Executive Director – Prospector

- Board of Directors
- Top 10 Shareholders other than Board
- Others

# Company Summary



- Leveraged to discovery
  - Copper/Cobalt – Gorge Creek JV
  - Lithium/Tantalum - Mt Cattlin North JV
  - Nickel/Copper/Cobalt – Musgraves Project
  - Nickel/Cobalt – Powder Puff Hill Project
  
- No cost opportunity to participate in lithium mine production at Mt Cattlin North JV
  
- Company activity has been a mixture of sole risk funding and JV expenditure
  
- Veteran explorers with successful track record

# Exploration Timeline



## Current Activity

1. Gorge Creek Cu, Co, Pb, Zn. XCITE helicopter EM.  
Objective - drill this field season.
2. Evaluation of new “Powder Puff Project” next to Quicksilver Ni and Co discovery.  
Objective – field work upon grant of tenements.
3. Mt Cattlin North lithium/tantalum – exploration ramp-up by Galaxy on Traka’s JV tenements.
4. Musgrave Project Cu, Ni, Co permitting underway.  
Objective -- field work this season.

# GORGE CREEK



**Excellent opportunity for copper cobalt mineralisation the same as found by Aeon on neighbouring Walford Creek Project**

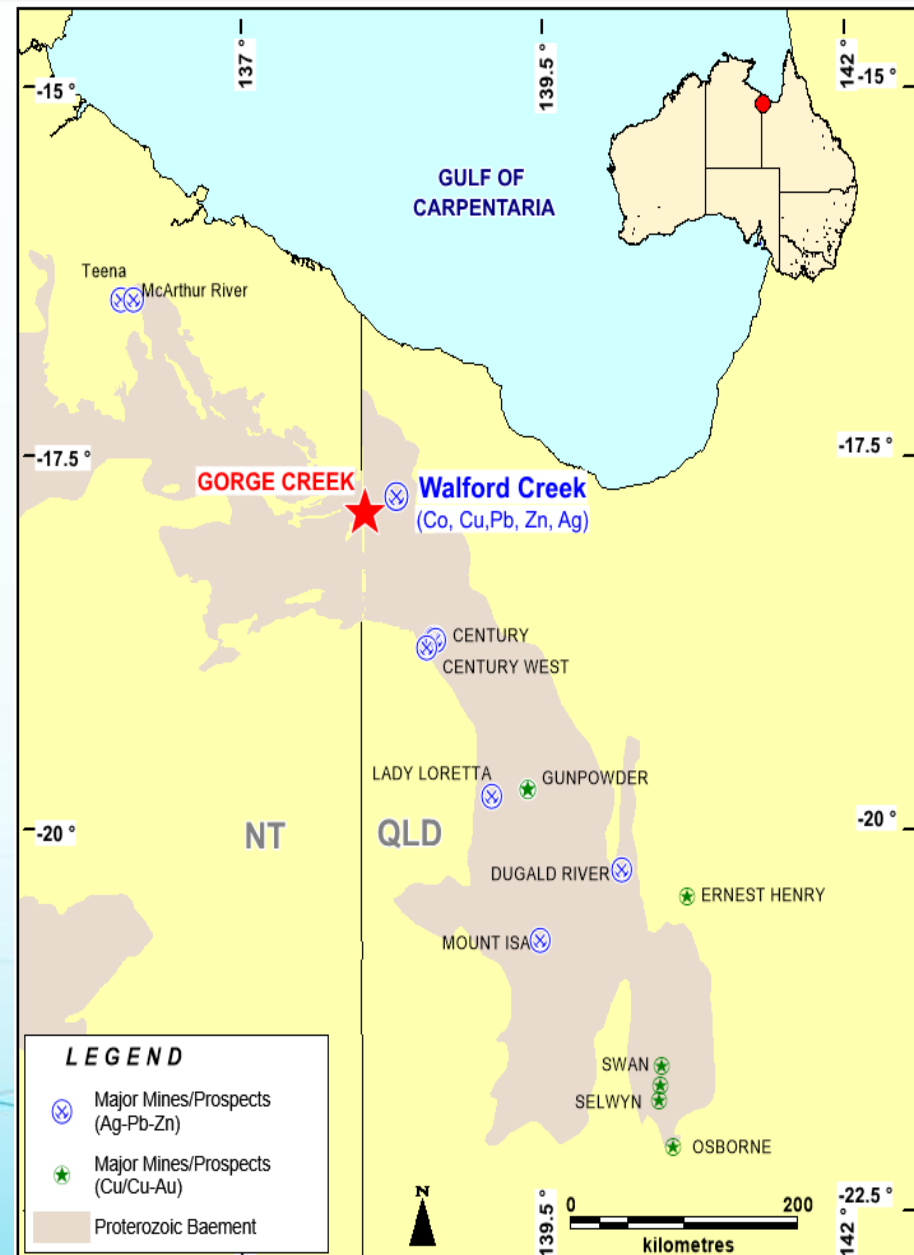
1. Traka is the Operator in JV with Cobalt QLD Pty Ltd.
2. Traka can earn 51% equity for total expenditure \$1 million over 3 years.
3. XCITE helicopter EM survey of EPM26264 completed last week.
4. On ground reconnaissance and target generation work underway.
5. Objective – drilling on targets before the end of field season (November?)



# Traka's principal focus 2018

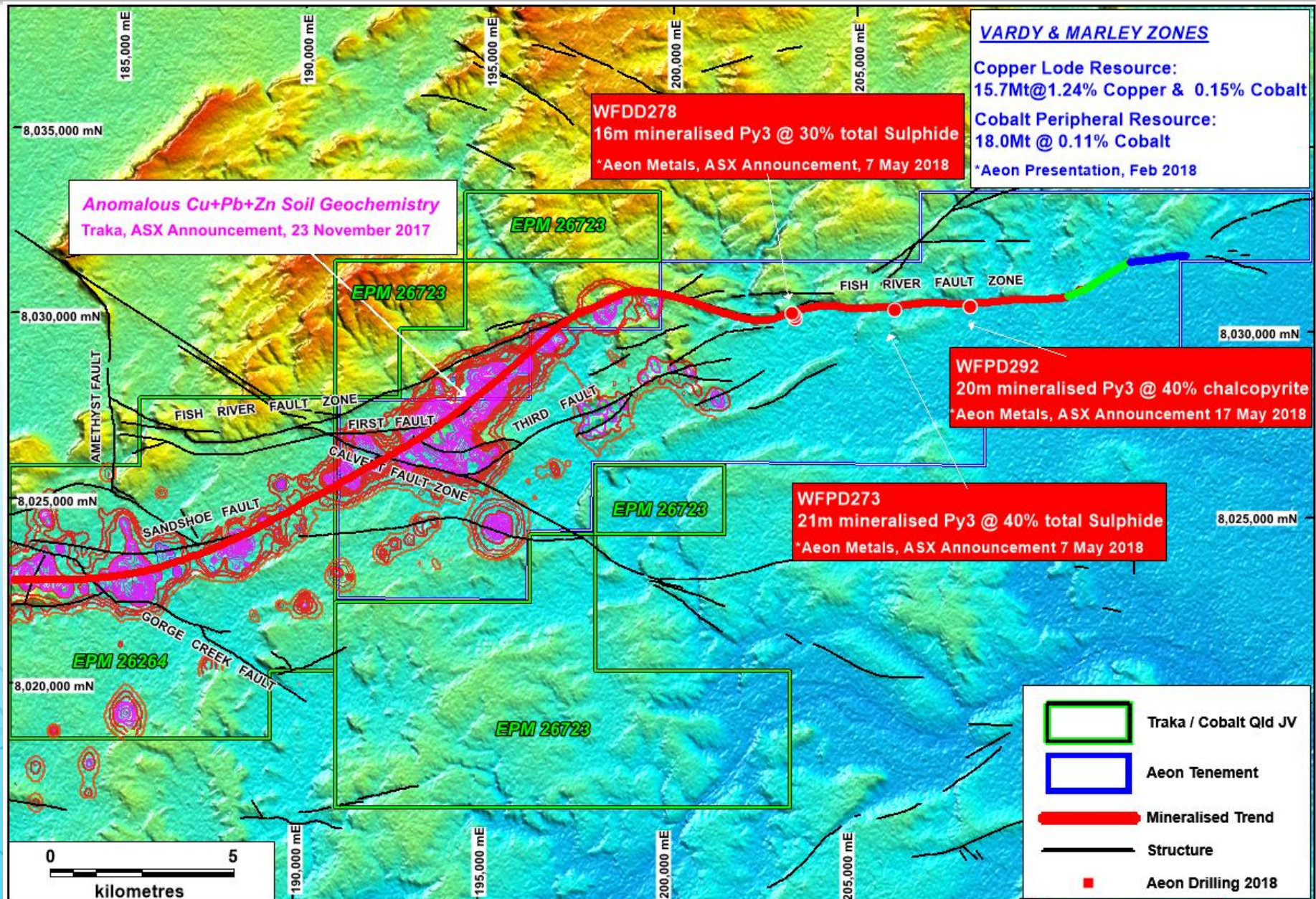
## Gorge Creek JV

- Located in the highly prospective Mt Isa Inlier
- Host to a number of Tier 1 base metal mines
- Previously explored for sedimentary rock hosted copper, lead and zinc mineralisation.
- Copper cobalt targets along the FRFZ along strike from Walford Creek (Aeon)





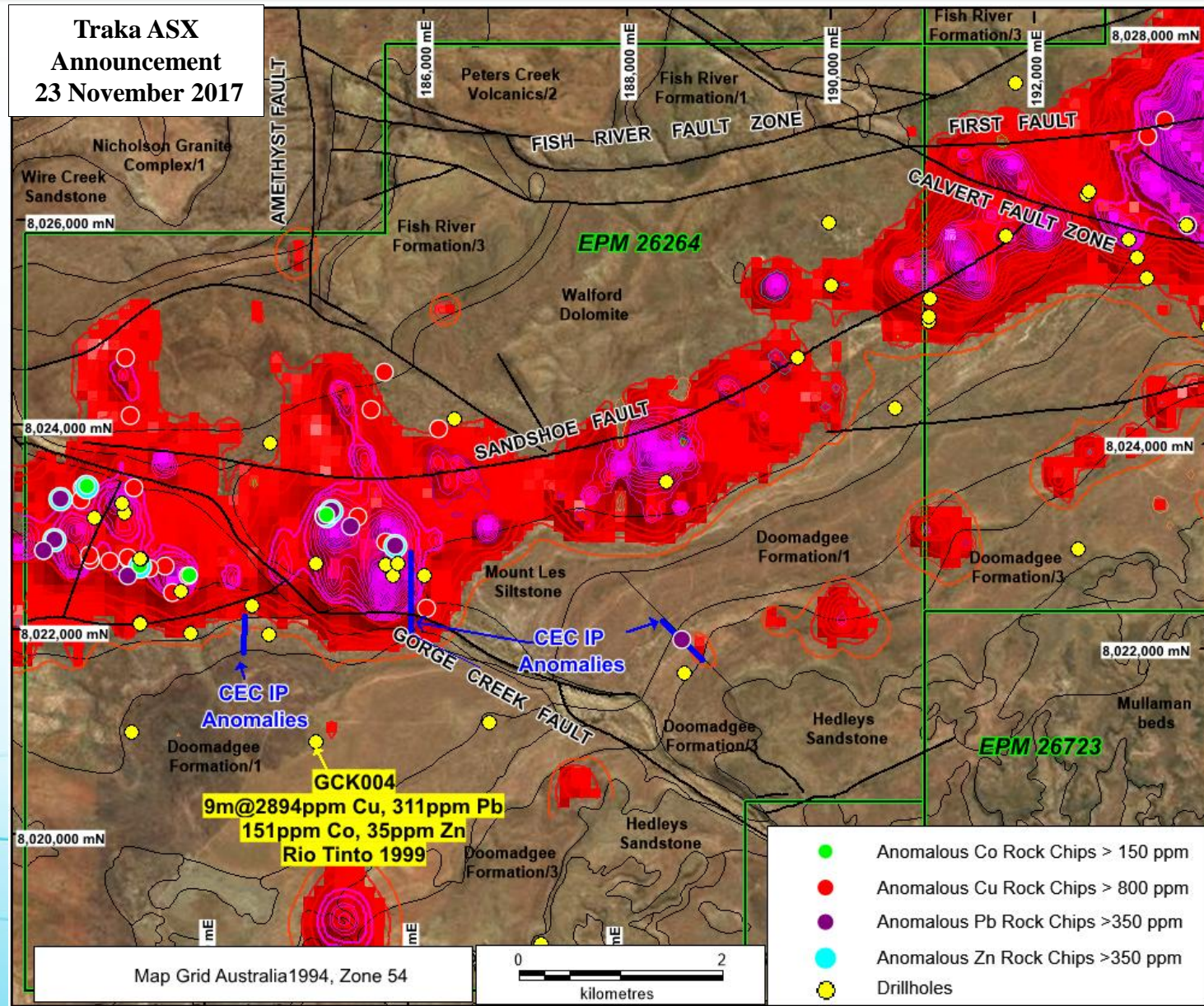
# Gorge Creek - mineralised trend along the FRFZ





# Gorge Creek – project details

- Extensive Pb, Zn and Cu geochemical anomalism along structures
- Gossans and IP targets not drilled
- Old drilling on periphery of structures but not the structures themselves
- Cobalt not tested but now clearly a target

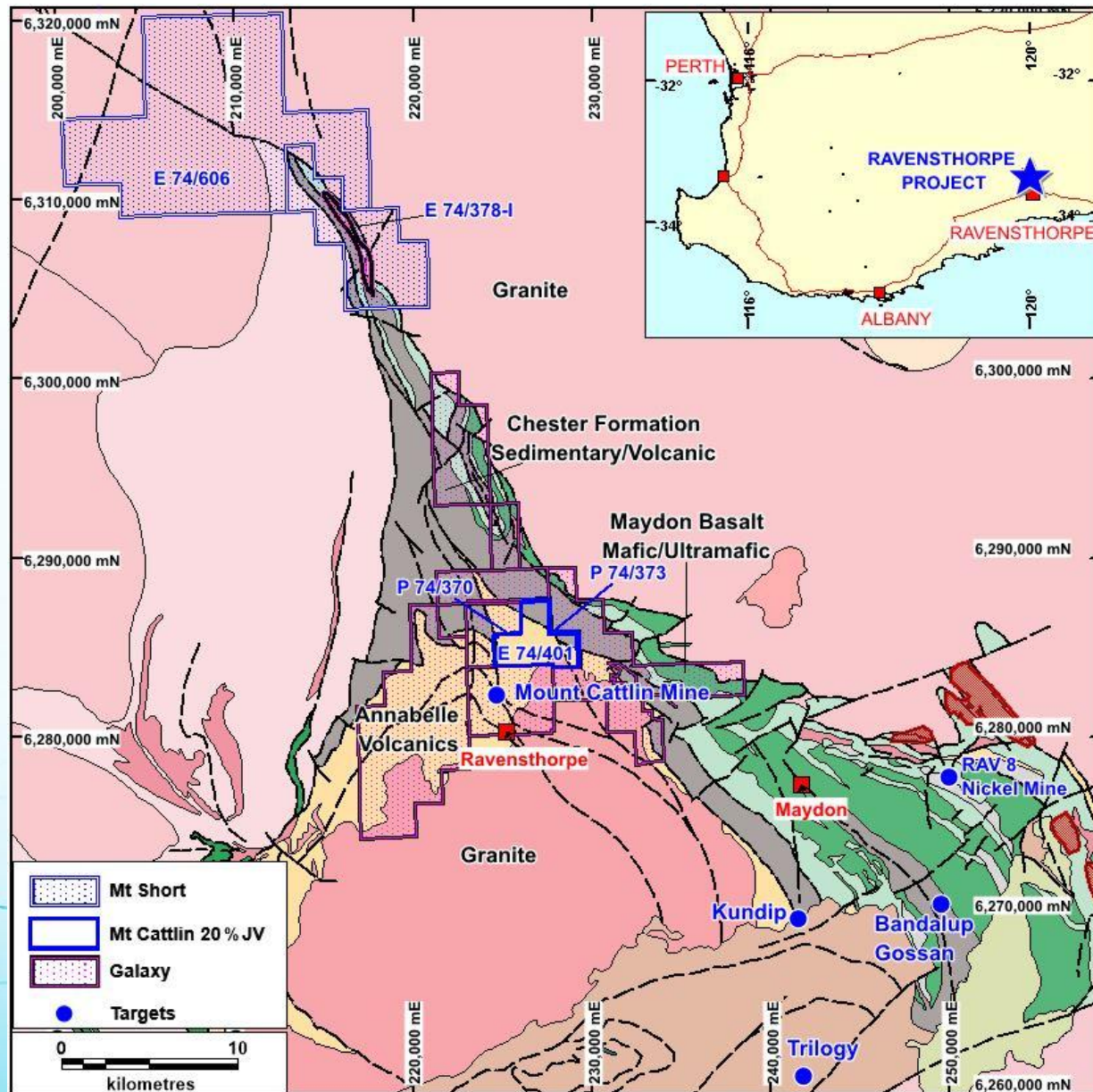




# Ravensthorpe

## 2 Projects

- Mt Cattlin North Lithium/Tantalum (20% Free Carry). Known lithium potential next to Mt Cattlin Mine.
- Mt Short Pb and Zn. Drilling IP and geochemistry target. Traka 100% . +10km of prospective stratigraphy

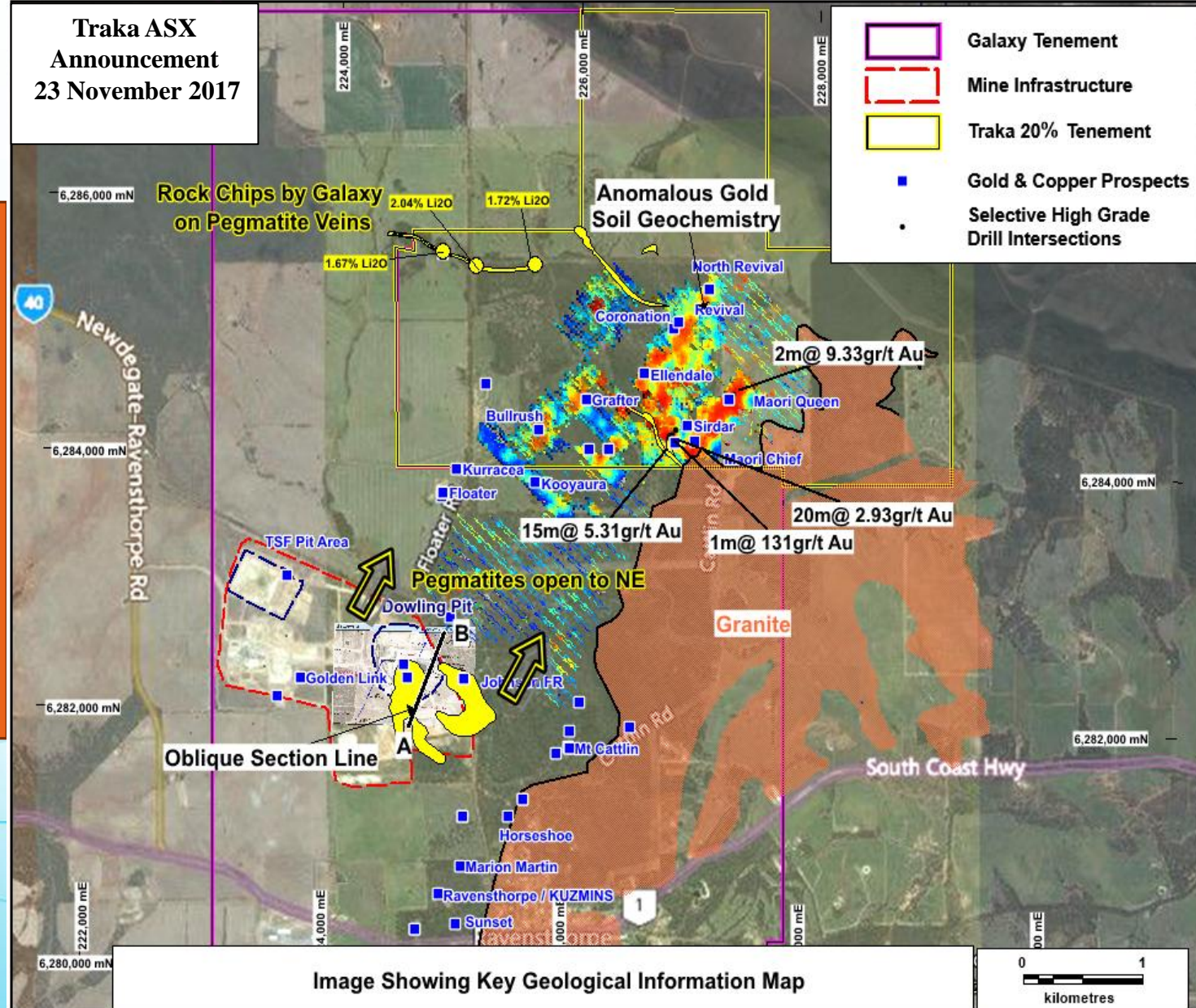




# Mt Cattlin North

Traka ASX  
Announcement  
23 November 2017

	Galaxy Tenement
	Mine Infrastructure
	Traka 20% Tenement
	Gold & Copper Prospects
	Selective High Grade Drill Intersections



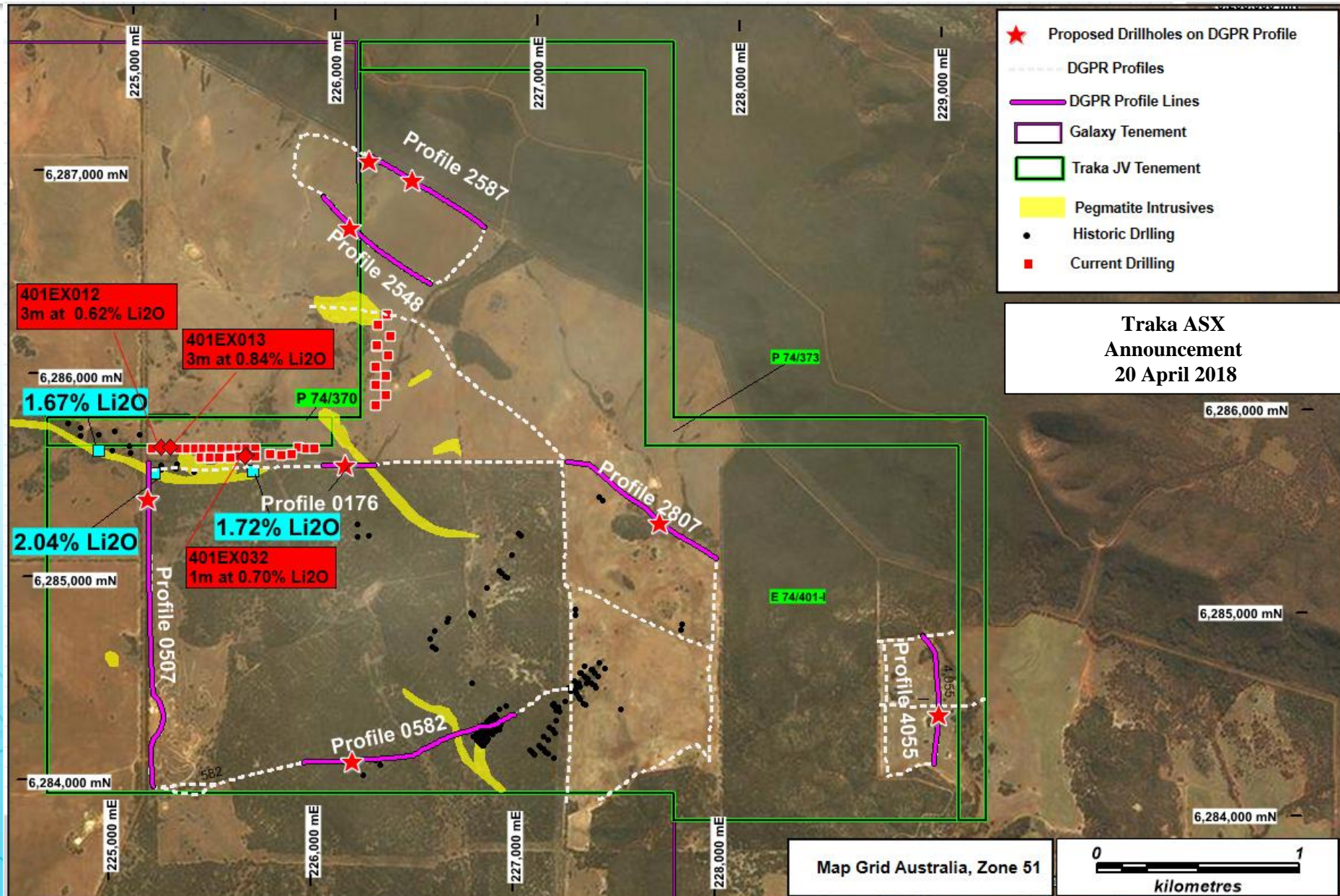
- DGPR between east and north of Dowling Pit
- Targeting flat lying pegmatite
- Gold lodes in the same zone

Image Showing Key Geological Information Map





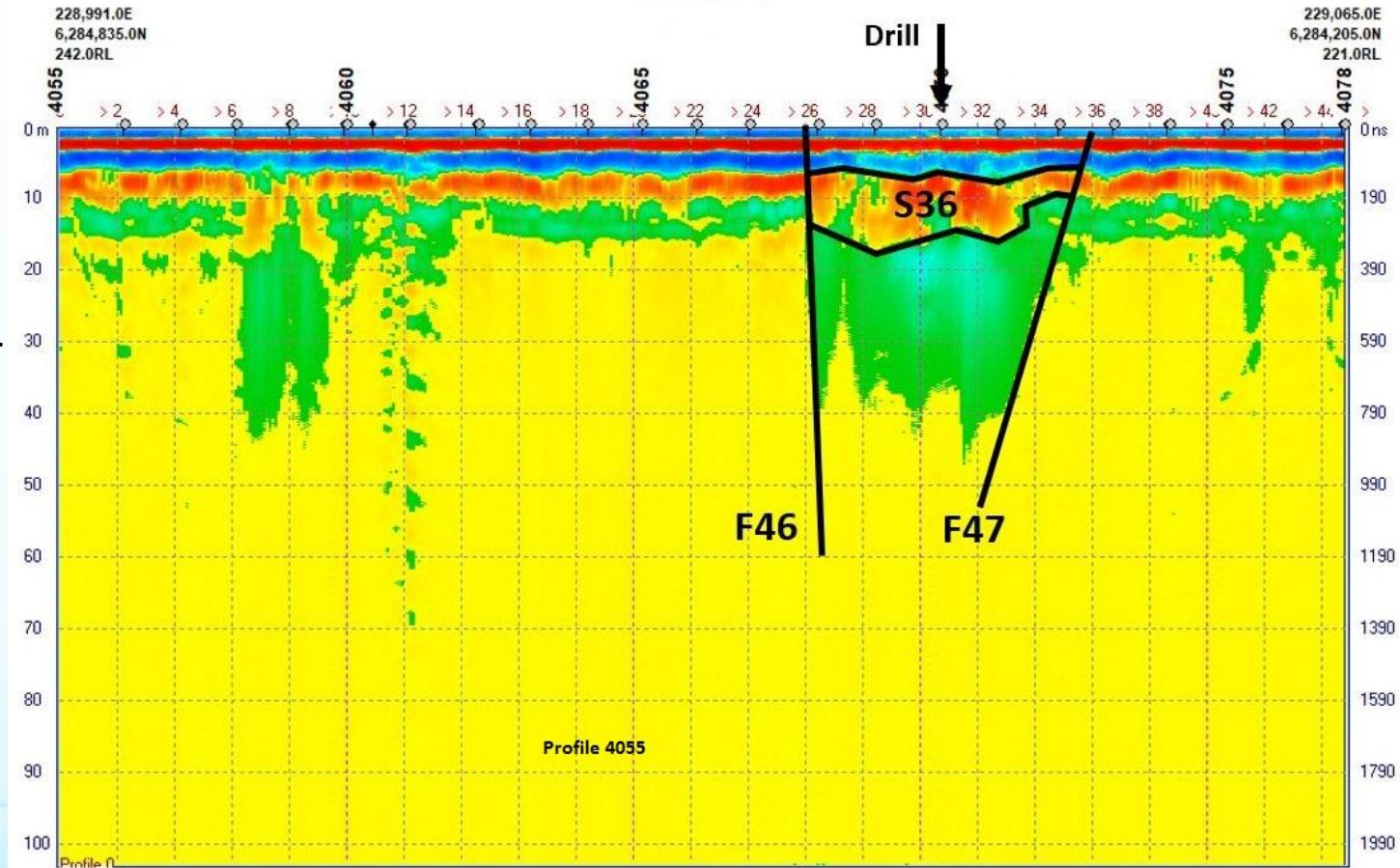
# Mt Cattlin North - DGPR





# DGPR Profile 4055

- Flat pegmatite bodies don't come to surface
- Drilling required to test
- DGPR looking for flat lying intrusive pegmatite dykes
- DGPR has to be systematic and gridded to produce 3D model



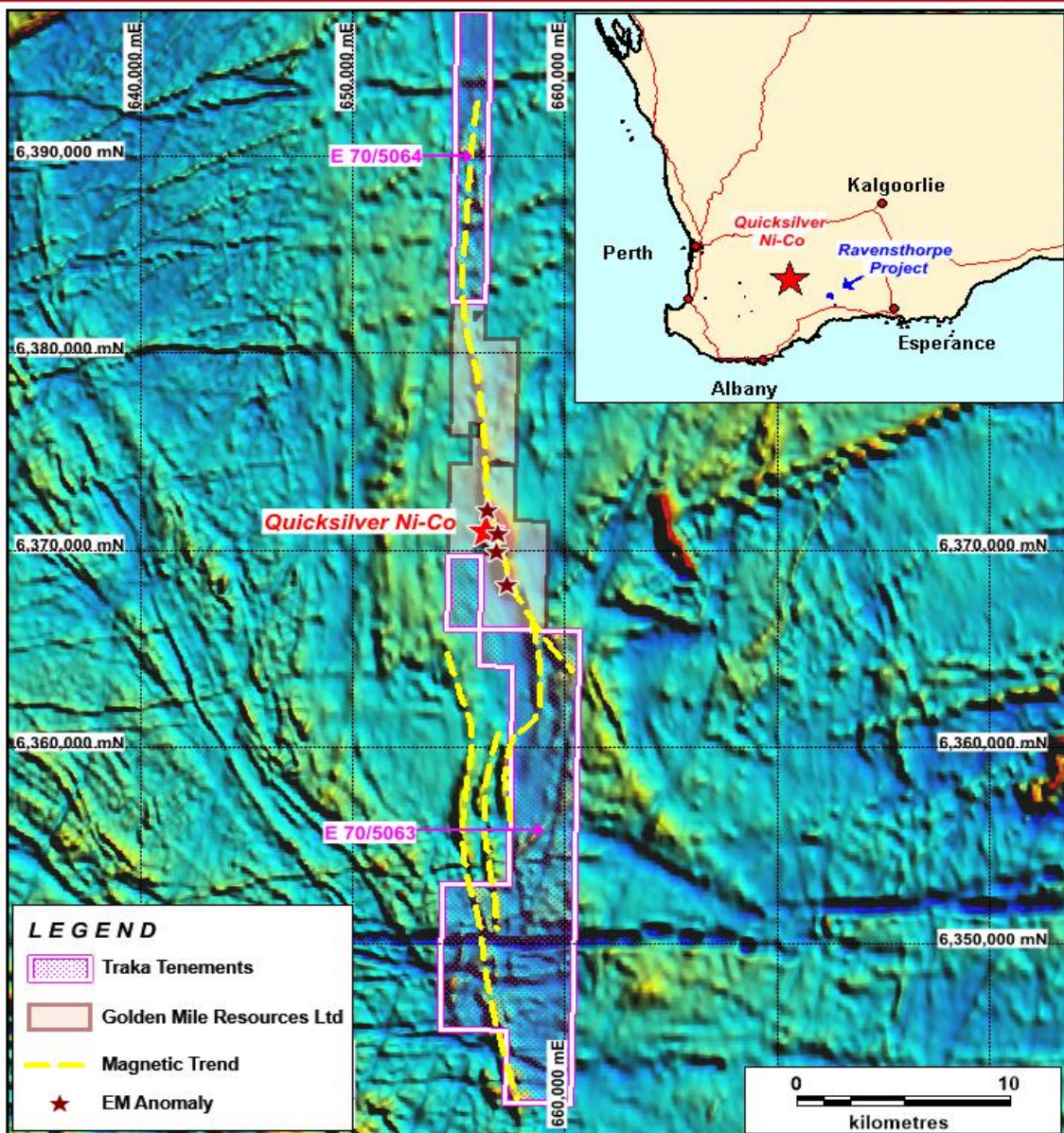
Traka ASX Announcement 20 April 2018



# Powder Puff Project - opportunity near new “Quicksilver” Ni, Co discovery

- Traka tenement applications “Powder Puff Hill” north and south along strike of Quicksilver Ni, Co discovery
- Very little historic work on Traka tenements
- Now undergoing evaluation

Traka ASX  
Announcement  
7 May 2018





# Musgrave Ni/Cu/Co Project

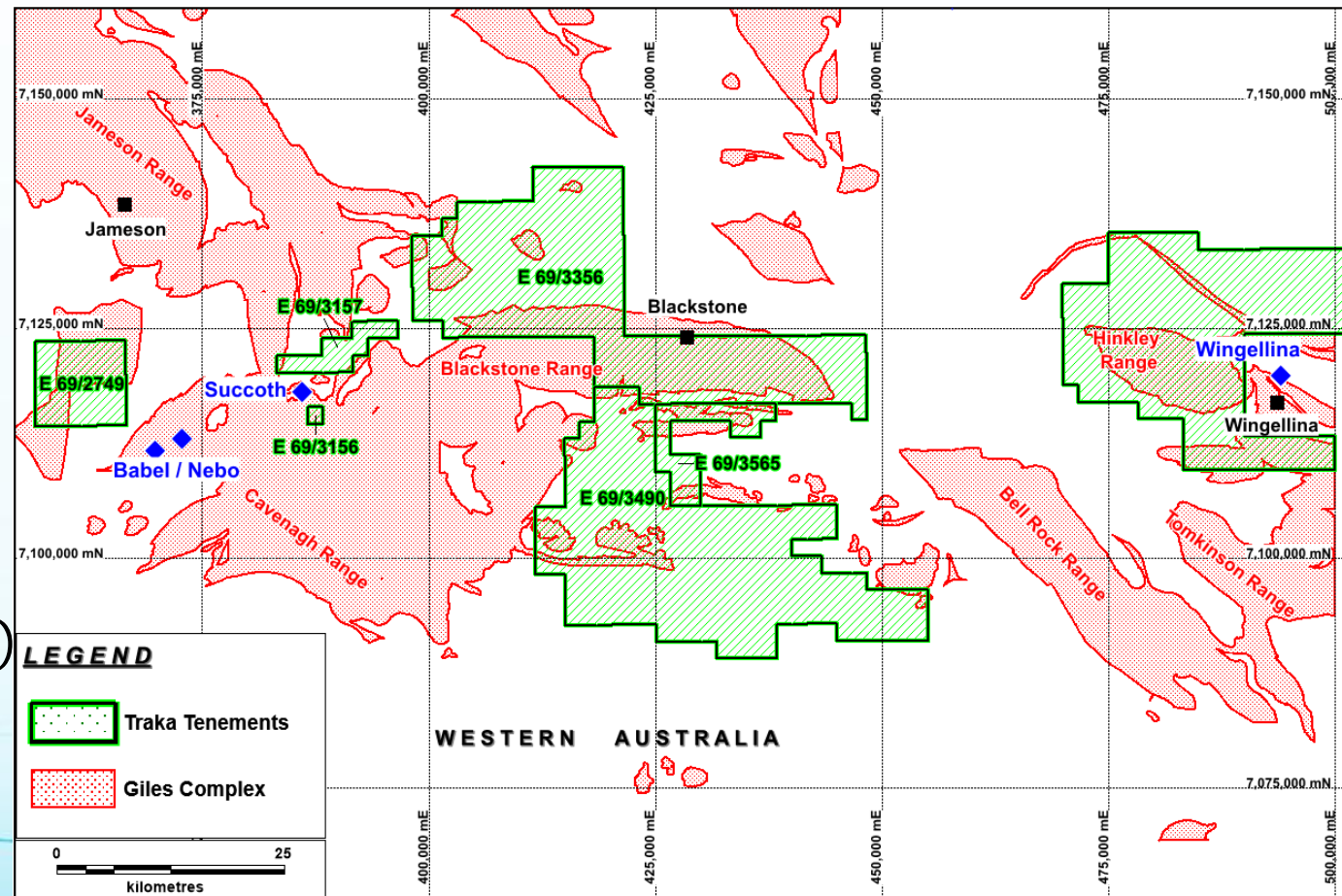


## Summary

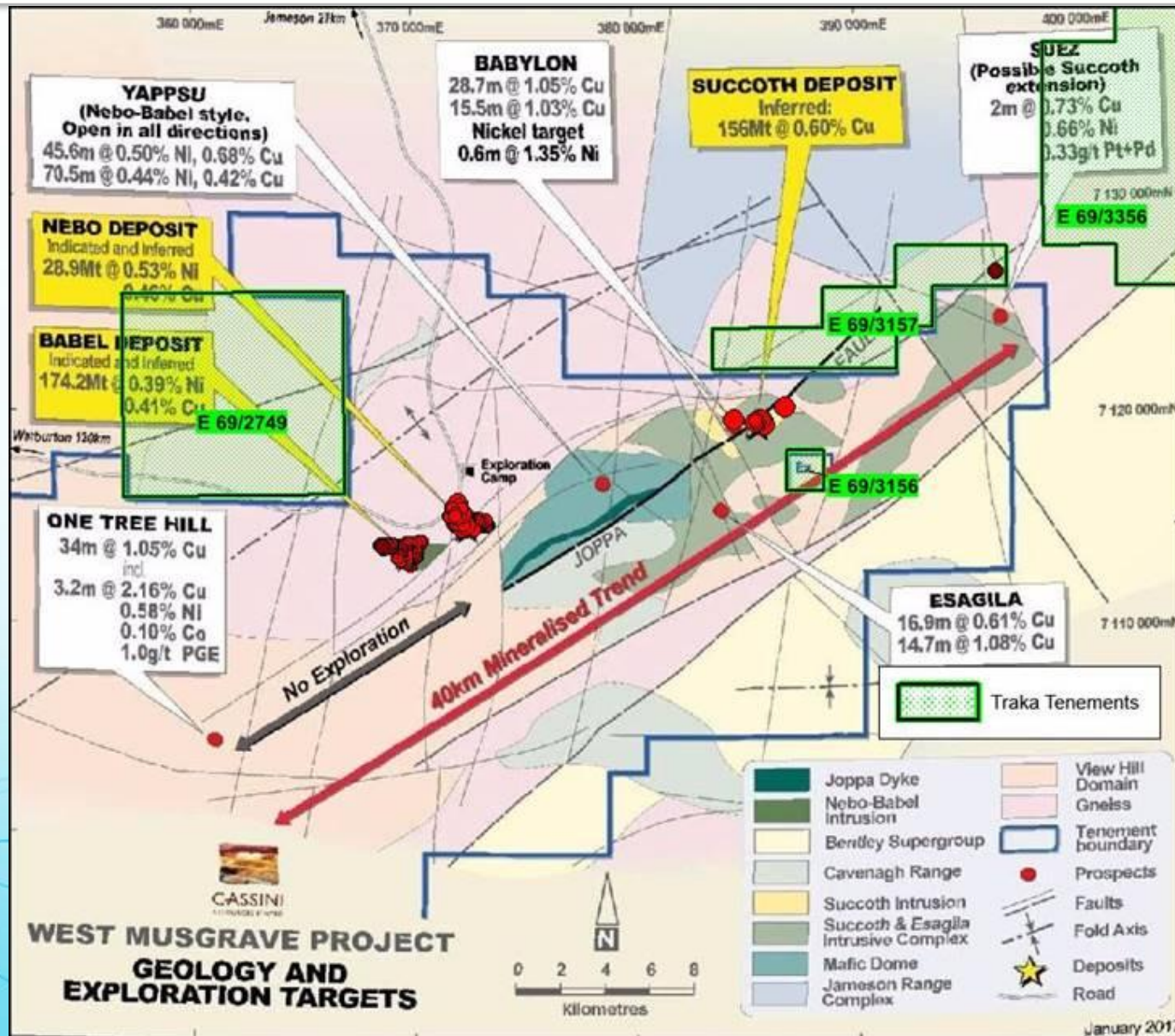
Highly Prospective Proterozoic Terrain with pedigree

### Existing resources

- Babel/Nebo (OZ/Cassini JV)  
830k tonnes Ni  
850k tonnes Cu
- Succoth (OZ/Cassini JV)  
935kt tonnes Cu
- Wingellina (MetalsX)  
2m tonnes Ni  
123k tonnes Co
- Oz Minerals/Cassini JV. Positive PFS

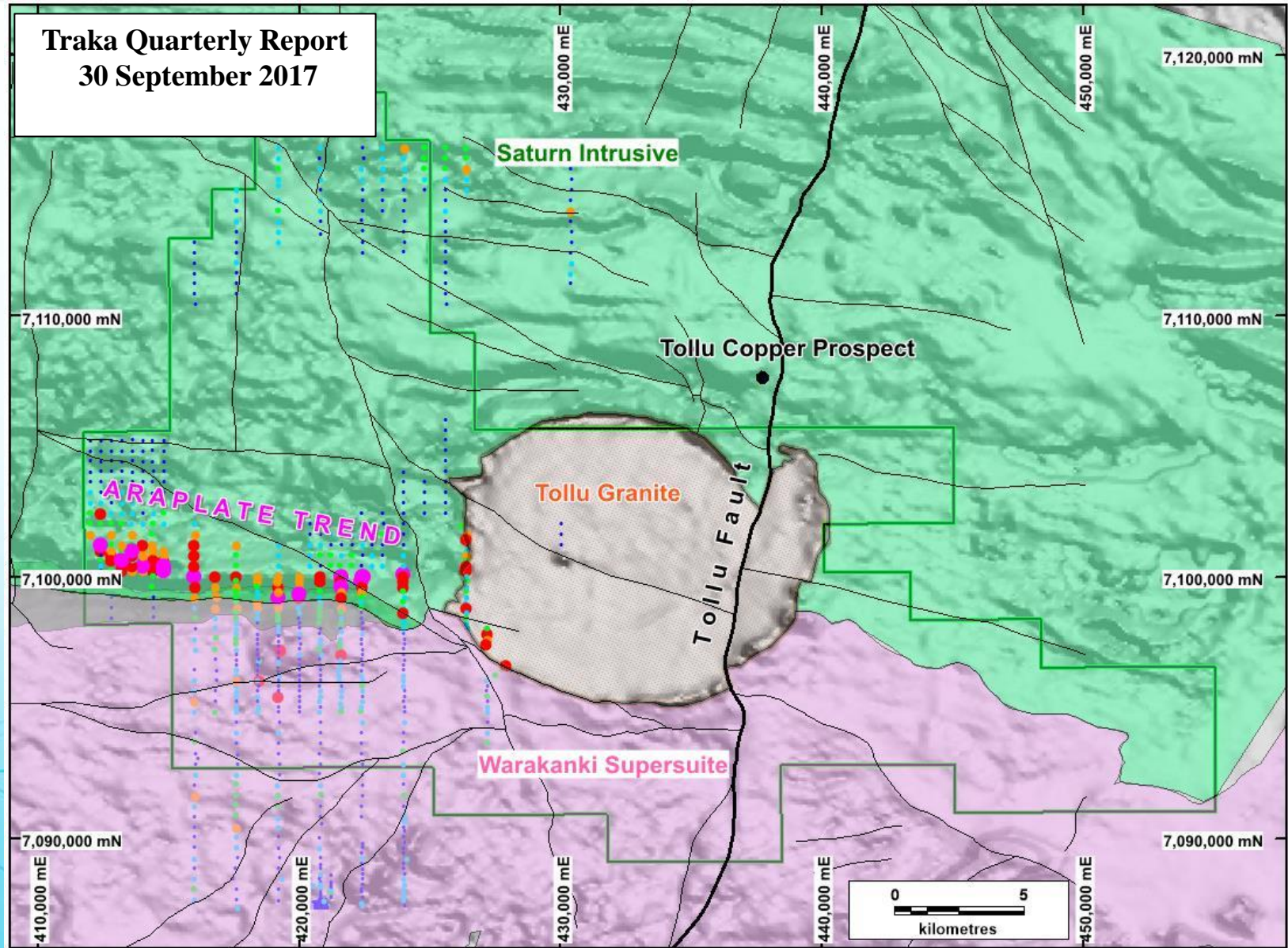


# Tenements adjacent OZ/Cassini



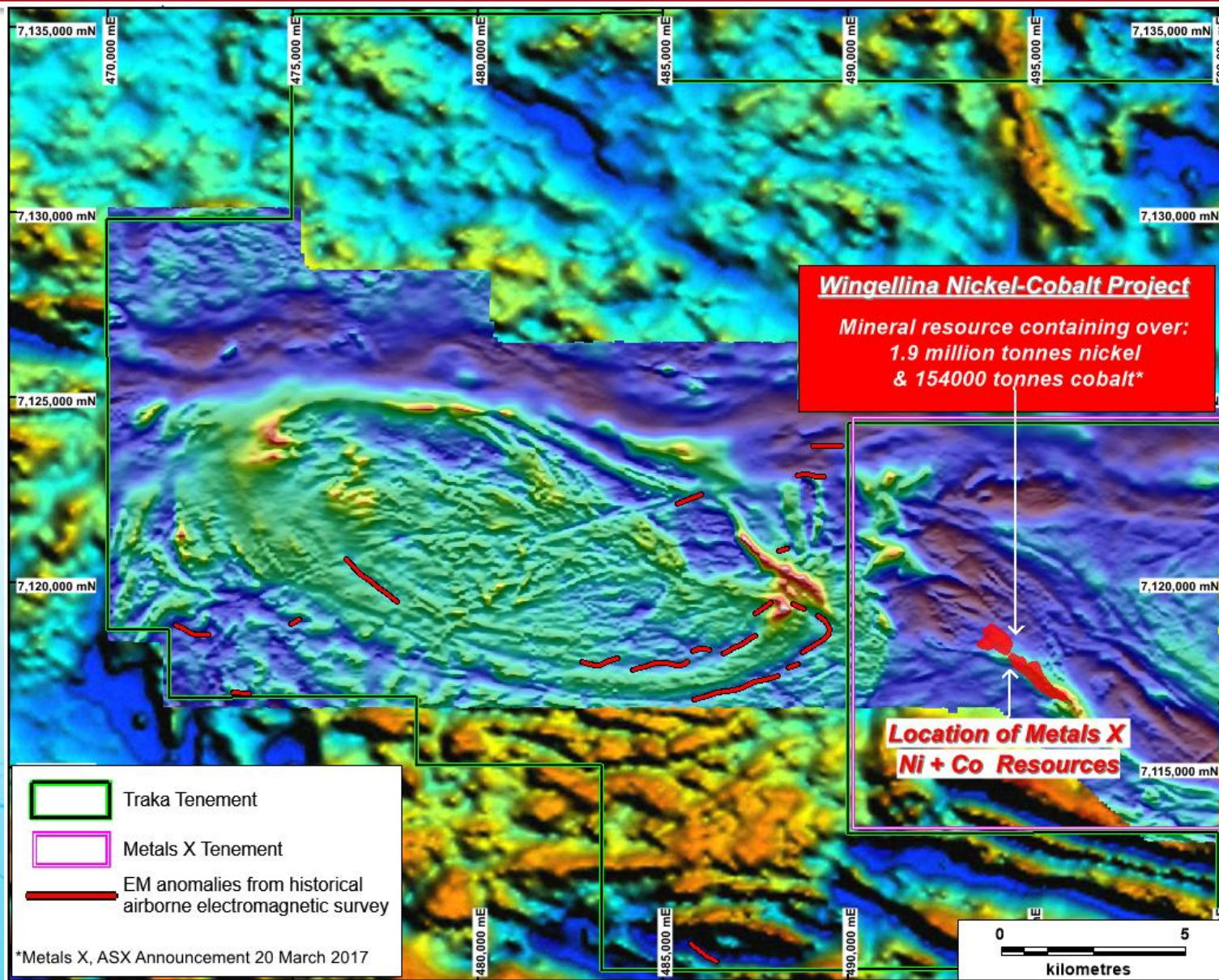


# 13km geochem Ni, Cu, PGE anomaly





# Untested targets around Wingellina



# Traka 2018



- **Traka has - No cost opportunity to participate in lithium/tantalum mine at Mt Cattlin North JV with Galaxy. Exploration ramping up.**
- **Traka – Priority work on emerging Gorge Creek JV for Copper, Cobalt, Lead and Zinc potential**
- **Traka – evaluation the new Powder Puff Hill Project for Nickel and Cobalt potential.**
- **Traka – advancing new phase of exploration work in the Musgrave region**
- **Funding in company adequate to achieve objectives**



# References and Disclaimer



## DISCLAIMER

This presentation has been prepared by **Traka Resources Limited** ABN 63 103 323 173 (**Traka**) for the sole purpose of providing financial, operational and other information to enable recipients to review the business activities of Traka. This presentation is not intended as an offer, invitation, solicitation or recommendation with respect to the purchase or sale of any securities. Nothing in this presentation should be construed as financial product advice, whether personal or general, for the purposes of Section 766B of the *Corporations Act 2001*.

This presentation may contain forward looking information, statements or forecasts that are subject to risks and other factors outside the control of **Traka**. Any forward looking information, statements or forecasts provided is/are considered reasonable in the circumstances and has/have been prepared in good faith and with all due care, but may differ materially from actual future results and performance. **Traka** and its affiliates, any of its directors, agents, officers or employees do not make any representation or warranty, express or implied, as to or endorsement of the accuracy or completeness of any information, statements or forecasts contained in this presentation, and they do not accept any liability for any statements made in, or omitted from, this presentation.

This presentation should not be relied upon as a representation of any matter that an investor should consider in evaluating the business activities of **Traka**. Investors must make and rely upon their own enquiries and due diligence in relation to the subject of this presentation and an investment in **Traka**. A potential investor must assess the merits or otherwise of an investment in **Traka** having regard to their own personal, financial and other circumstances.

The information in this presentation that relates to exploration results is based on information compiled by Mr Patrick Verbeek, a member of the Australasian Institute of Mining and Metallurgy . Mr Verbeek has sufficient experience which is relevant to the style of mineralisation under consideration and to the activity which he is undertaking to qualify as a Competent Person as defined in the 2012 edition of the “Australian Code for Reporting Exploration Results, Mineral Resources and Ore Reserves”. Mr Verbeek consents to the inclusion in the presentation of the matters based on information in the form and context in which it appears.

Information included in the presentation is dated 15 November 2017