



**CYGNUS GOLD**

**High grade gold in SW Western  
Australia**

**James Merrillees**  
Managing Director  
Presentation to AGM  
May 25, 2018

# Cautionary statements

This presentation contains summary information about Cygnus Gold Limited (Cygnus or the Company). The information in this presentation is of general background and does not purport to be complete.

## **Forward looking statements**

This presentation may contain certain forward looking statements and projections regarding estimated, resources and reserves; planned production and operating costs profiles; planned capital requirements; and planned strategies and corporate objectives. Such forward looking statements/projections are estimates for discussion purposes only and should not be relied upon. They are not guarantees of future performance and involve known and unknown risks, uncertainties and other factors many of which are beyond the control of Cygnus Gold Limited. The forward looking statements/projections are inherently uncertain and may therefore differ materially from results ultimately achieved.

Cygnus Gold Limited does not make any representations and provides no warranties concerning the accuracy of the projections, and disclaims any obligation to update or revise any forward looking statements/projects based on new information, future events or otherwise except to the extent required by applicable laws. While the information contained in this report has been prepared in good faith, neither Cygnus Gold Limited or any of its directors, officers, agents, employees or advisors give any representation or warranty, express or implied, as to the fairness, accuracy, completeness or correctness of the information, opinions and conclusions contained in this presentation. Accordingly, to the maximum extent permitted by law, none of Cygnus Gold Limited, its directors, employees or agents, advisers, nor any other person accepts any liability whether direct or indirect, express or limited, contractual, tortious, statutory or otherwise, in respect of, the accuracy or completeness of the information or for any of the opinions contained in this presentation or for any errors, omissions or misstatements or for any loss, howsoever arising, from the use of this presentation.

## **Not an offer**

This presentation is for information purposes only. The presentation does not comprise a prospectus, product disclosure statement or other offering document under Australian law (and will not be lodged with ASIC) or any other law. This presentation also does not constitute or form part of any invitation, offer for sale or subscription or any solicitation for any offer to buy or subscribe for any Securities nor shall they or any part of them form the basis of or be relied upon in connection therewith or act as any inducement to enter into any contract or commitment with respect to Securities.

## **Competent person statement**

The information in this presentation that relates to Exploration Results is based on information and supporting documentation compiled by Mr James Merrillees, a Competent Person who is a member of The Australasian Institute of Mining and Metallurgy. Mr Merrillees is Managing Director and a full-time employee of Cygnus Gold and holds shares in the Company. Mr Merrillees has sufficient experience relevant to the style of mineralisation under consideration and to the activity which he is undertaking to qualify as a Competent Person as defined in the 2012 edition of the “Australasian Code for Reporting of Exploration Results, Mineral Resources and Ore Reserves”. Mr Merrillees consents to the inclusion in this announcement of the matters based on this information in the form and context in which it appears.



# Investment highlights

- Experienced team of mine finders and developers
- New targeting approach in under-explored region with numerous high grade gold prospects
  - ~8,000km<sup>2</sup> tenement package
- Recent IPO leveraged to exploration success:  
*Early drilling success on Stanley (20km of greenstone)*<sup>1</sup>
  - 9.5m @ 29.20 g/t Au
  - 10.9m @ 15.10 g/t Au
  - 6.0m @ 3.27 g/t Au
- Advancing exploration on 100% tenure and JVs
- High profile industry partners:
  - Resource Capital Funds (RCF)
  - Gold Road Resources (ASX:GOR)





# About us



## **James Merrillees - Managing Director**

James is a professional geologist with more than 20 years' global experience in minerals exploration and development. He has wide experience leading teams exploring and evaluating precious and base metals throughout Australia, Europe, South America, Asia and Africa. He has been involved in the discovery of greenfields nickel, uranium and iron ore deposits in Scandinavia, and bauxite and gold in West Africa. James is a member of the AusIMM.



## **Simon Jackson – Non-Executive Director**

Simon is a Chartered Accountant with 25 years' experience in the gold industry. Most recently, Mr Jackson was a founding shareholder and President & CEO of the TSXV listed Orca Gold Inc, a junior exploration company with multiple gold discoveries in Sudan. Prior to that, he was an integral part of the senior management team at Red Back Mining Inc, which grew from a small West Perth based junior to a TSX listed intermediate producer that was taken over by Kinross Gold Corp in 2010.



## **Dr Amanda Buckingham – Non-Executive Director**

Amanda has been involved full-time in mineral exploration for over 20 years. Amanda founded and remains a major shareholder and director of companies in the United States, Australia and Singapore and has been fundamental to their high profitability. Amanda founded Fathom Geophysics in 2007, an industry leading geophysical group that has developed worlds-best technology for interpreting under cover and significantly increasing the chance of discovery. Amanda is a research fellow at the University of Western Australia and a founder of Cygnus Gold.



## **Dr Oliver Kreuzer – Non-Executive Director**

Oliver is a Registered Professional Geoscientist (MAIG RPGeo) with a broad skill set in structural, generative and corporate geology honed during a 18+ year career in applied research and mineral exploration across a wide range of gold, base metals and uranium projects in Australia, Africa, North America, Europe and Asia. His work directly contributed to new company floats (ASX:AUC, ASX:RGU), company transforming project acquisitions (ASX:AWV) and new discoveries (e.g., Katanning Au).



## **Michael Bohm - Non-Executive Chairman**

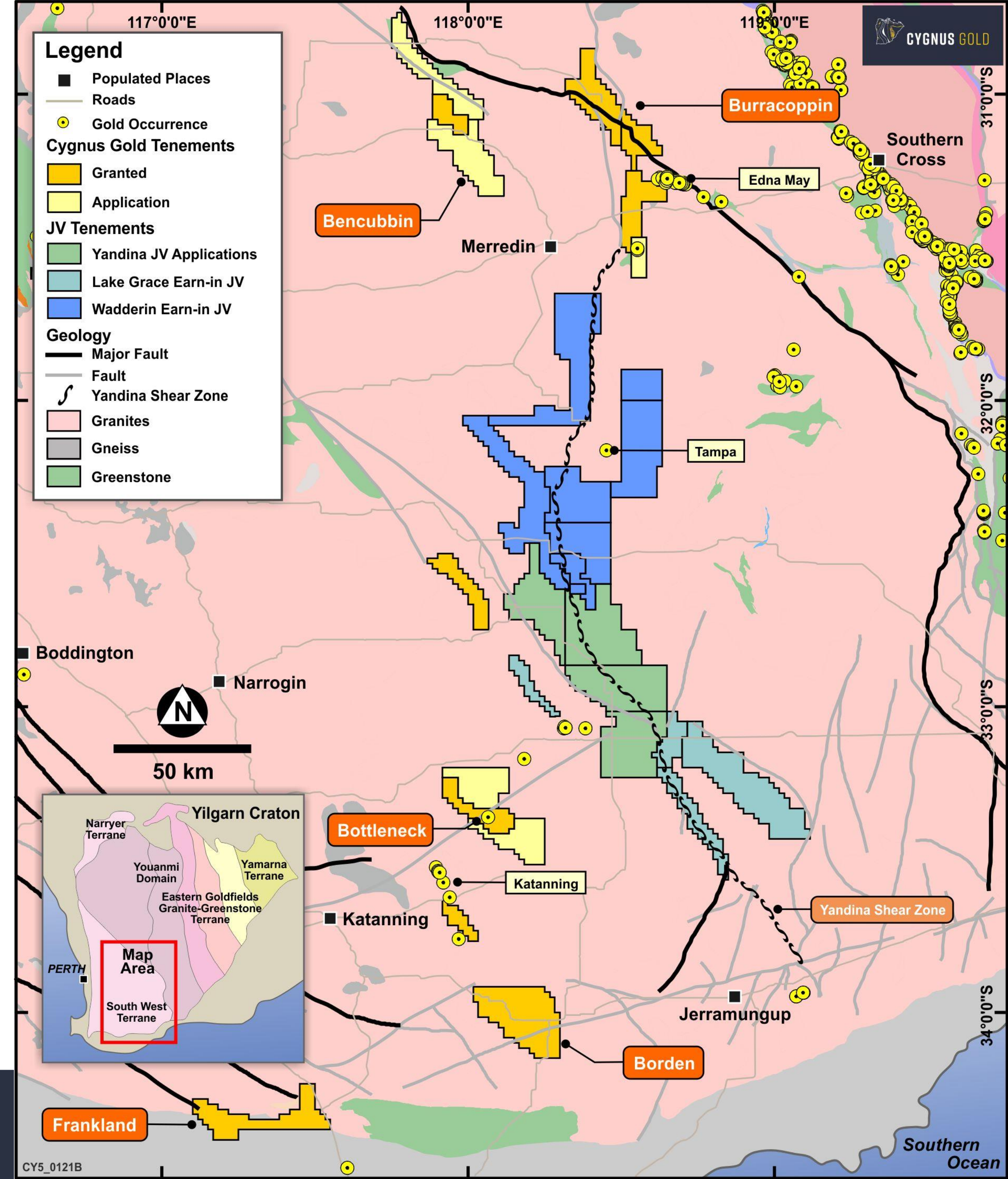
Michael is a mining professional with extensive Corporate & Operations experience in Australia, South East Asia, Africa, Chile, Canada & Europe. A graduate of the WA School of Mines, Michael has worked as a mining engineer, mine manager, project manager, project director and managing director and has been involved in a number of mine developments in the gold, nickel and diamond sectors. Mike is a Director and Chair of a number of ASX-listed companies and sits on their Audit & Risk and Remuneration Committees. Mike has had previous directorships at Argyle Diamonds, Sally Malay Mining and Ashton Mining of Canada. He is a member of the AusIMM and AICD.



# High grade gold in the Wheatbelt, WA

*~8,000km<sup>2</sup> in underexplored greenstone terrane*

- Significant ground position for gold exploration in the Southwest Terrane within the prolific Yilgarn Craton
- Poorly explored due to widespread post-mineral cover and limited geophysical data
- New understanding of high metamorphic grade gold deposits
- Target generation using leading edge technologies applied to recently released datasets
- High grade near-surface gold in 100% owned Stanley Project
- Three joint ventures with highly successful explorer Gold Road (ASX:GOR)
- Backed by recognised industry partners
- IPO 15 January 2018, drilling commenced at Bottleneck

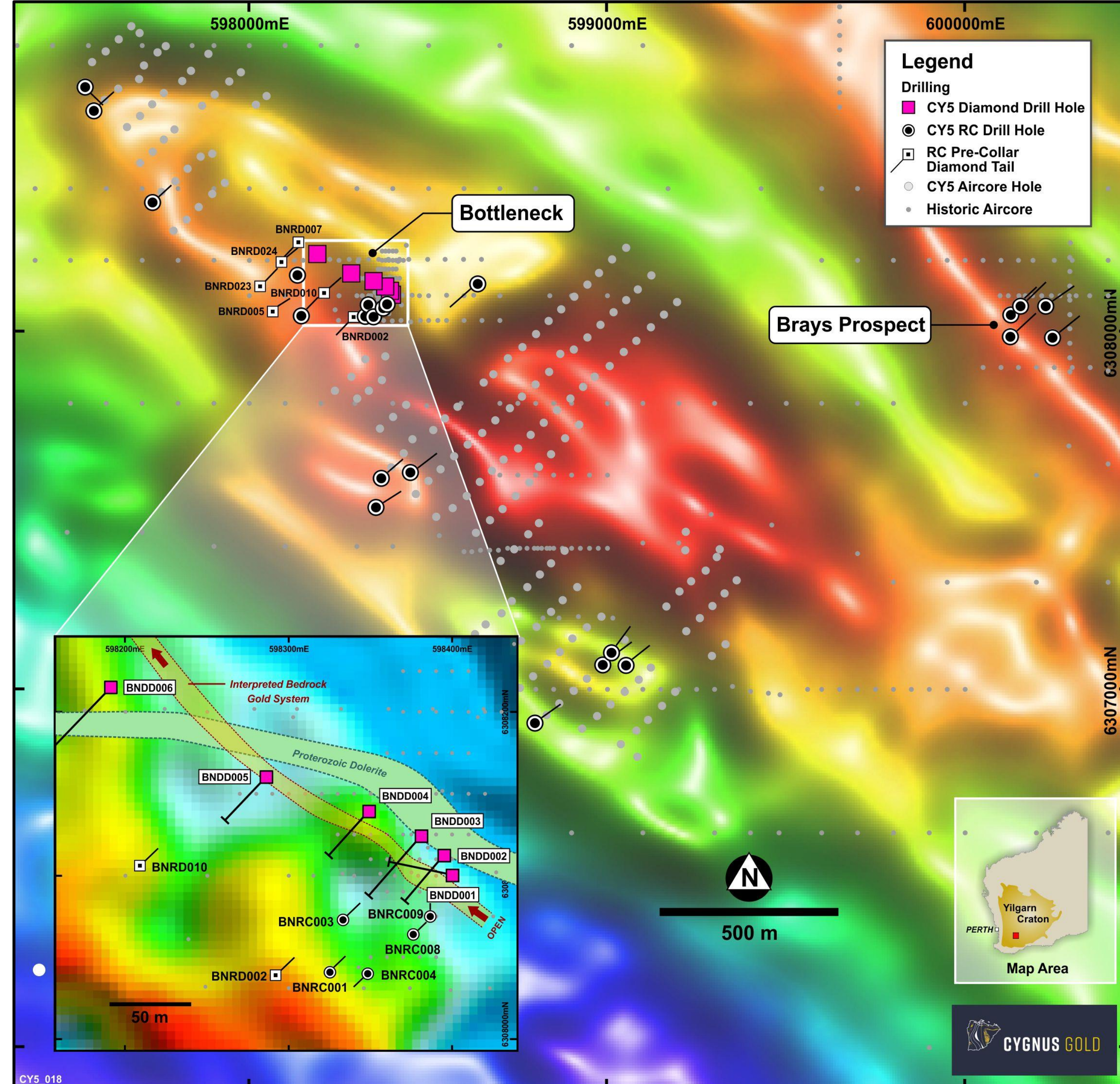




# Bottleneck - shallow, high-grade gold<sup>1</sup>

*First core holes drilled at Stanley*

- BNDD001
  - 9.5m @ 29.2 g/t Au from 36.7m (incl 2.4 m @ 114 g/t Au)
- BNDD003
  - 10.9m @ 15.1 g/t Au from 24.7m (incl. 4.8 m @ 34 g/t Au)
- BNDD006 (fresh rock)
  - 6m @ 3.3 g/t Au from 157.5m (incl. 2 m @ 8.8 g/t Au)
- Visible gold in fresh rock
- Detailed structural study improving understanding controls on mineralisation
- Follow-up RC/DD drilling ongoing
- Co-funded by WA Government's EIS program



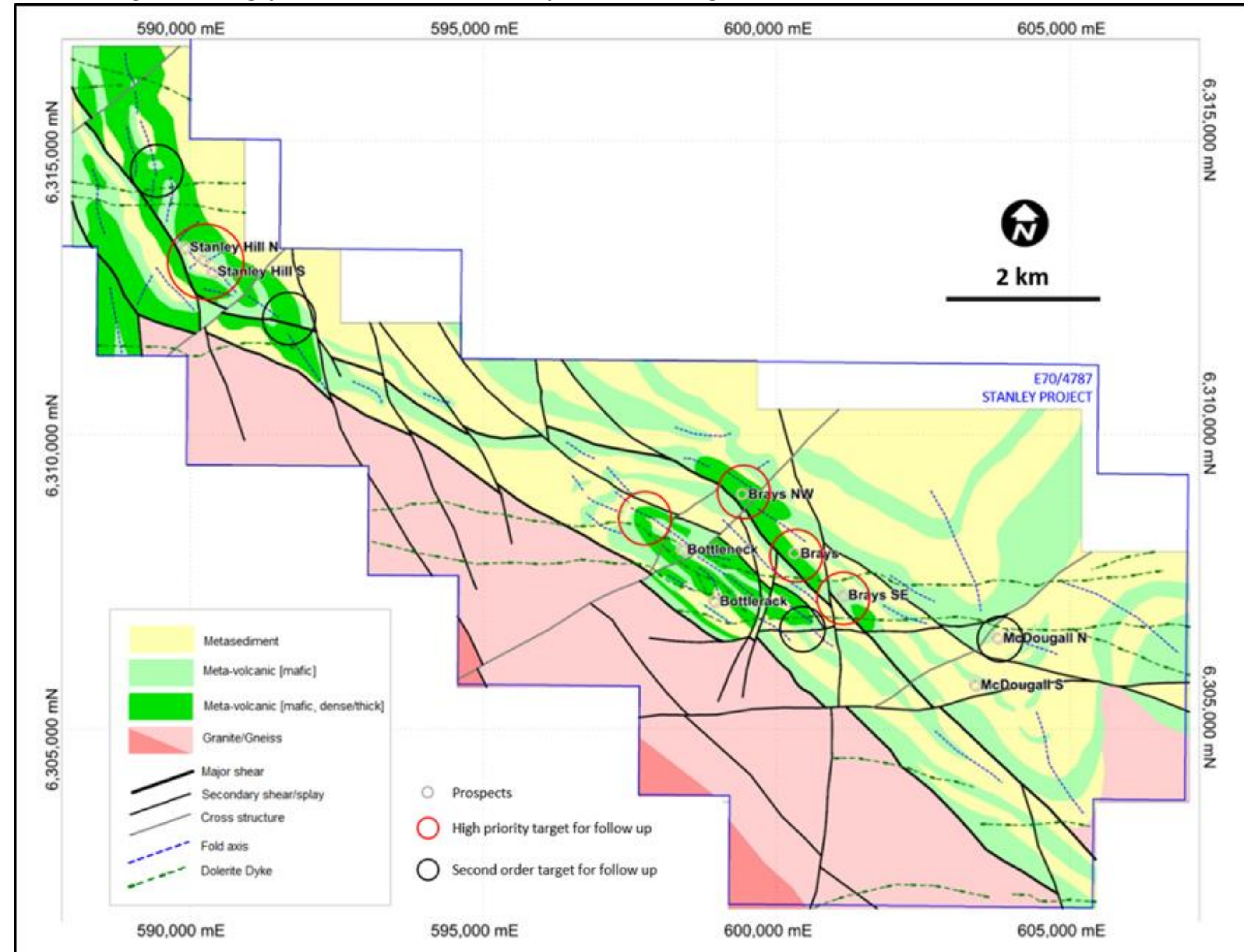
<sup>1</sup> Refer ASX announcement 22/2/18 for full details of these exploration results. Cygnus is not aware of any new information or data that materially affects the information included in the said announcement.



# Stanley - multiple high-grade prospects, 100% Cygnus

>20 km strike length of prospective greenstone geology, limited deep drilling

- **Bottleneck**<sup>1</sup>
  - BNDD001: 9.50m at 29.20 g/t Au
  - BNDD003: 10.9m @ 15.1 g/t Au (incl. 4.8m @ 34 g/t Au)
- **Stanley Hill**<sup>2</sup>
  - 3m @ 3.77 g/t Au
- **Brays**<sup>2</sup>
  - 8m @ 2.97 g/t Au
- **McDougall**<sup>2</sup>
  - >400m Au-in-soil anomaly
- Numerous untested >50 ppb Au surface anomalies
- New targets identified from ground gravity survey



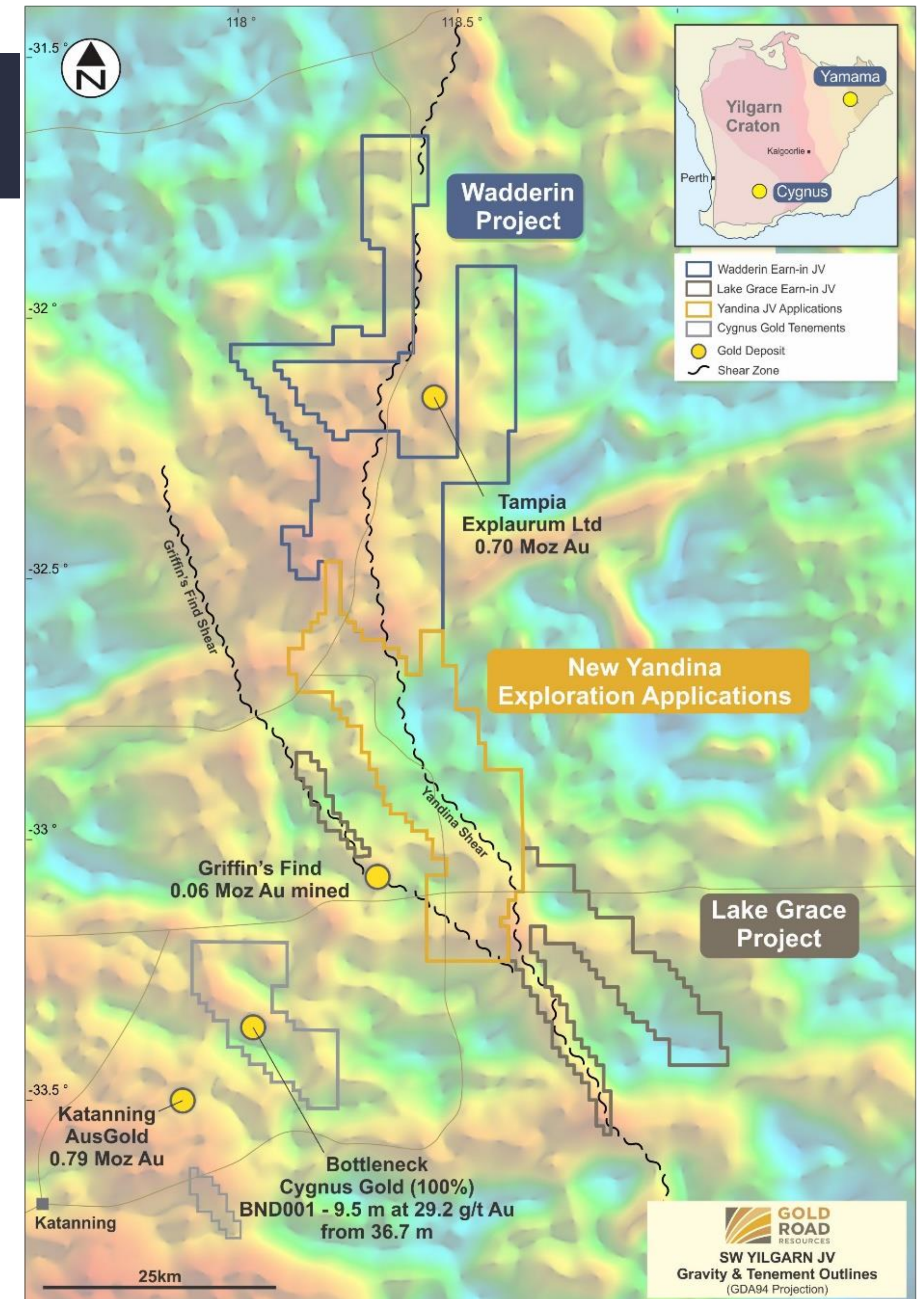


# Gold Road joint ventures

## *Experienced technical partner*



- Cygnus managing three JV projects covering ~5,000km<sup>2</sup>
- 2018 activity (subject to approvals):
  - Gravity surveys (targeting mafic host rocks)
  - Surface sampling
  - AC and RC drilling
- Wadderin/Lake Grace Earn-in JVs:
  - GOR to spend A\$3.7M to earn 75% (4yrs), min spend A\$1.3M (1.5yrs)
- Yandina JV Project:
  - 75% Gold Road, 25% Cygnus

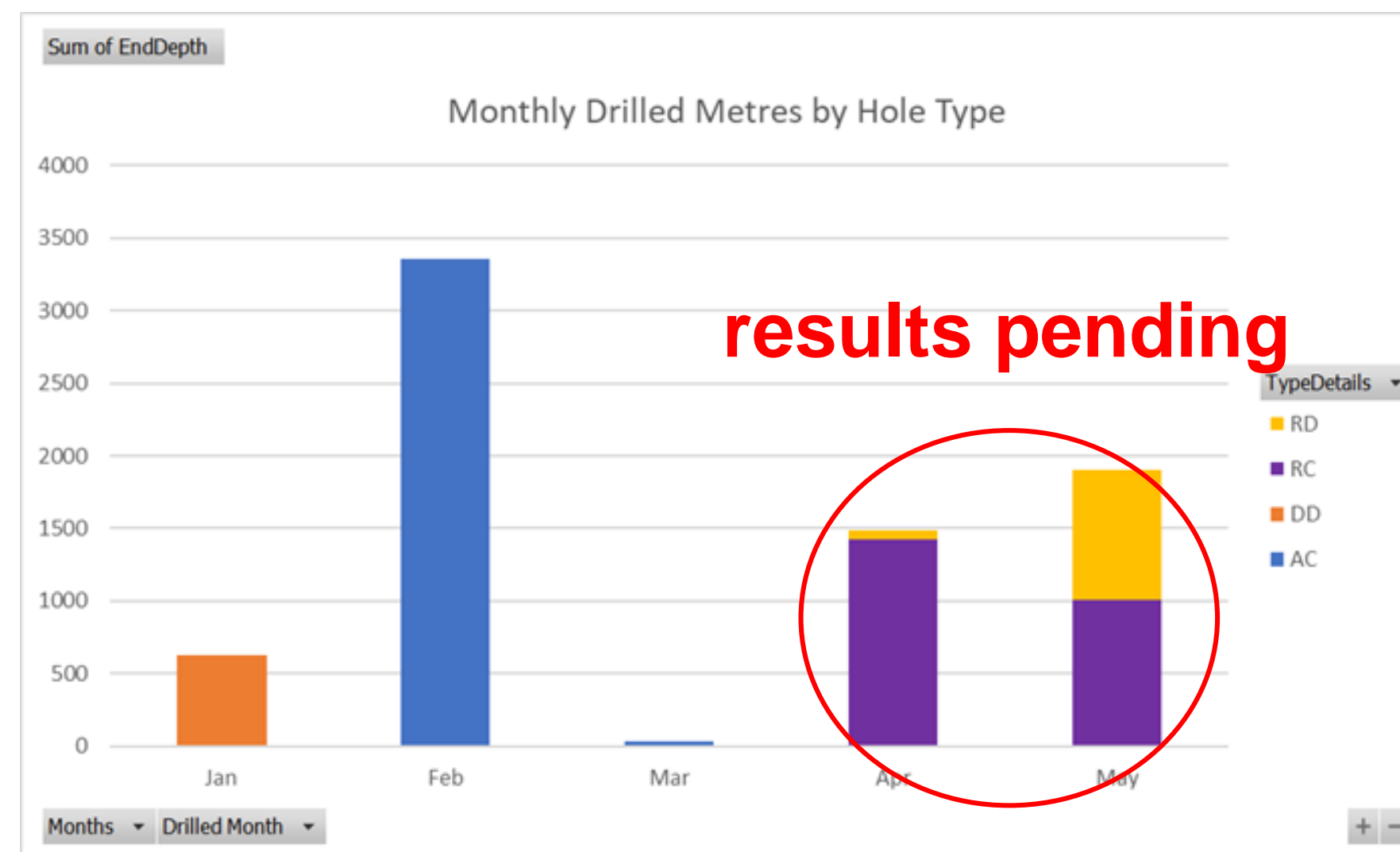




# Progress since IPO 15 January 2018

*~7,400m drilling completed to date*

- Ongoing drill programs
- New JV with Gold Road at Yandina
- Additional tenement applications in the southwest
- Detailed ground gravity at Stanley
- Target generation and field work on 100% & JV ground





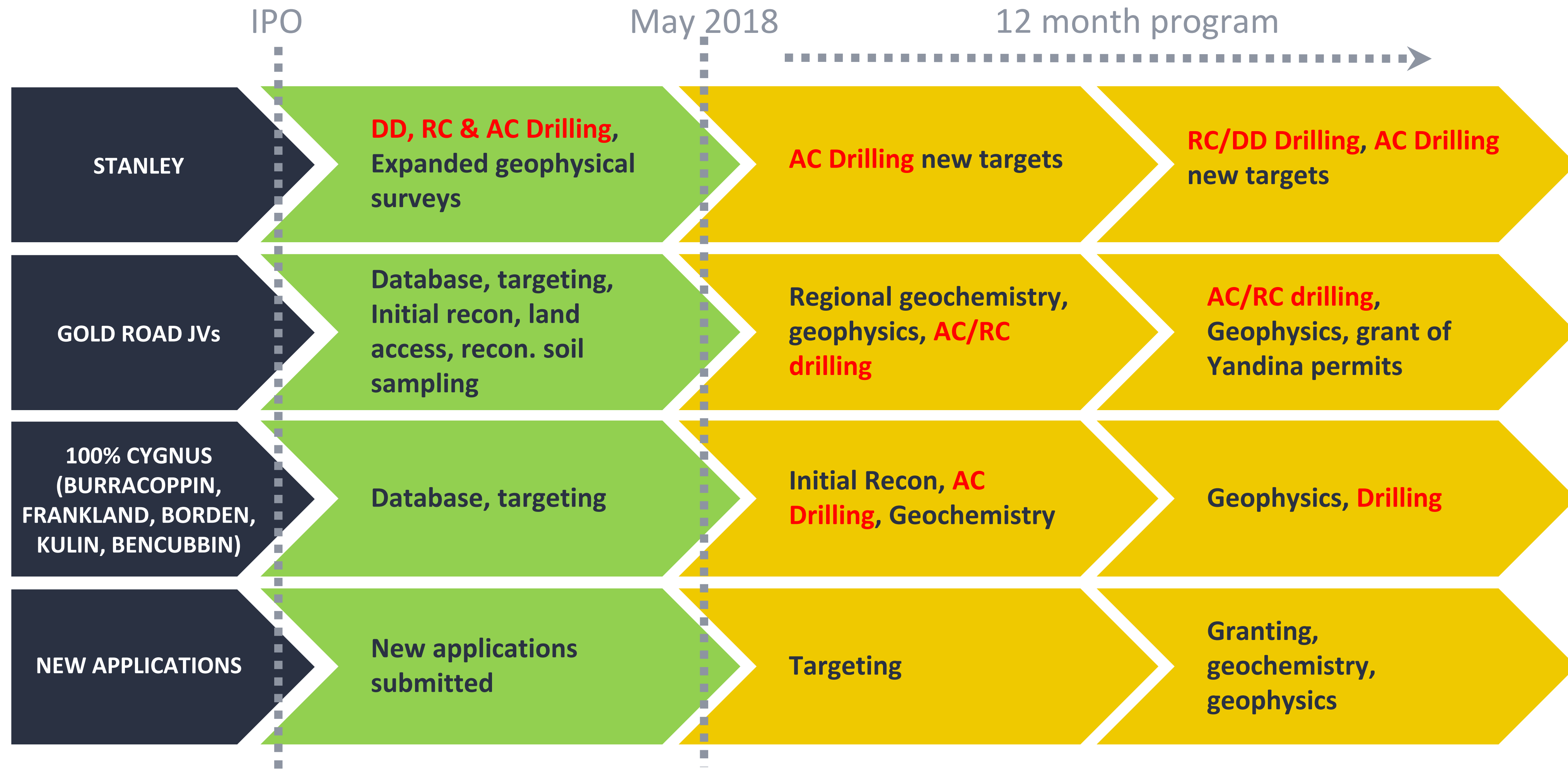
# 2018 Exploration

## *Active exploration on existing and new projects*

- Stanley drilling results pending:
  - RC drilling completed (2,975m) testing high grade targets identified in previous diamond drilling. Assays to be reported in coming weeks
  - 600m diamond drilling ongoing testing shallow, high grade gold targets at Bottleneck
- Gold Road JVs – exploration commencing:
  - Geophysical surveys and surface sampling for target generation (2H 2018)
  - AC and RC drilling to follow (Q4 2018 / Q1 2019)
  - Focus on Lake Grace / Wadderin (GOR spending ~\$1m over next 12 months)
- Drilling new targets:
  - Targeting ongoing with drilling/exploration advancing in 2H 2018 on Cygnus' 100% owned Burracoppin, Frankland, Borden, Kulin and Bencubbin projects
- New project generation:
  - Cygnus will continue to use its successful project generation approach for additional applications (on-going)



# Exploration programs





# Capital & shareholder structure

Capital Structure	
Pre – IPO Shares	30,683,341
Shares Issued at IPO	30,000,000
Shares on Issue post IPO	60,683,341
Market Capitalisation (@ \$0.18)	\$10.9m
Cash (at 31 March 2018)	~\$4.9m

Shareholder Structure	Shares	%
Resource Capital Funds (RCF)	9,166,667	15.11%
Southern Cross Capital (US HNW)	7,500,000	12.36%
Gold Road Projects	3,750,000	6.18%
Board & Management	9,326,003	15.21%
<b>TOTAL</b>	<b>29,966,560</b>	<b>49.38%</b>
Shares Escrowed	19,743,755	32.52%





# Cygnus Gold - Contact

**James Merrillees**

Managing Director

—

Level 3, 20 Parkland Rd,  
Osborne Park, WA 6017

PO Box 2215,  
Churchlands, WA 6018

—

**E:** [j.merrillees@cygnusgold.com](mailto:j.merrillees@cygnusgold.com)

**T:** +61 8 9489 2680

**W:** [www.cygnusgold.com](http://www.cygnusgold.com)

