

**West African Resources hits 14.5m at 27.93 g/t gold  
including 3m at 64.9 g/t gold at M1 South**

Gold developer West African Resources Limited (ASX, TSXV: WAF) is pleased to report further high-grade drilling results from its Sanbrado Gold Project, Burkina Faso.

**Highlights**

- High-grade results from infill drilling at M1 South include;
  - **TAN18-DD206: 8m at 12.89 g/t Au from 126m**
  - **TAN18-DD206: 14.5m at 27.93 g/t Au from 142.5m**
    - **including 3m at 64.9 g/t Au and 3.5m at 52.8 g/t Au**
  - **TAN18-DD206: 1.5m at 22.1 g/t Au from 170.5m**
  - **TAN18-DD209: 4m at 25.72 g/t Au from 440.5m including 0.5m at 124 g/t Au**
  - **TAN18-DD209: 14m at 7.82 g/t Au from 482m including 0.5m at 57.9 g/t Au**
- High-grade results from infill drilling at M5 include;
  - **TAN18-DD200: 14m at 3.11 g/t Au from 232m**
  - **TAN18-DD201A: 31m at 2.39 g/t Au from 246m**
  - **TAN18-DD202A: 18m at 4.82 g/t Au from 266m**
  - **TAN18-DD203: 4m at 12.34 g/t Au from 238m**
- Strong high-grade visible gold intercepted in TAN18-DD214A in step-out/down drilling
- Resource update and feasibility study on track for June 2018
- Funded to complete all work programs with approximately \$45m cash at bank

Managing Director Richard Hyde commented:

“Drilling M1 South has intercepted strong visible gold in deep drilling, while infill drilling shows excellent continuity of high grade gold.

“M5 has returned strong results from within the proposed open pit area and from depth.

“The Company will release an updated resource estimate and significantly improved Feasibility Study incorporating open pit and underground mine schedules next month.”

### M1 South Drilling Program

Today's results include some infill drilling around the base of the proposed open pit at 120m vertical as well as step out and down drilling at more than 550m vertical.

Infill drilling has again confirmed the continuity of high grade mineralisation with TAN18-DD206 returning high grade from three zones including **8m at 12.89 g/t Au from 126m, 14.5m at 27.93 g/t Au from 142.5m including 3m at 64.9 g/t Au and 3.5m at 52.8 g/t Au, and 1.5m at 22.1 g/t Au from 170.5m**. High grade has also been returned from TAN18-DD209 at approximately 350m vertical with **4m at 25.72 g/t Au from 440.5m down hole including 0.5m at 124 g/t Au and 14m at 7.82 g/t Au from 482m including 0.5m at 57.9 g/t Au**.

Step out and down drilling in TAN18-DD214A has intercepted four zones of visible gold approximately 20m along strike from TAN18-189 which returned **11m at 10.5 g/t from 654 and 6m at 24.4 g/t Au from 675m** (ASX/TSXV 23/04/18). A potential new zone of very strong visible gold mineralisation has been intercepted at 578.4m down hole, some 40m above the first expected zone of high-grade mineralisation at 619m (See photos 1 and 2). Additional visible gold was intercepted at 624.2m and 639.5m down hole. Logging and cutting of TAN18-DD214A is in progress. Results are expected in June and will not be included in the resource estimation due for release in June 2018. Results demonstrate that the underground mine life at M1 South will be extended beyond what will be outlined in the upcoming Feasibility Study and that drilling at depth remains a high priority in the Company's exploration strategy.

### M5 Drilling Program

Drilling at M5 over the last quarter has been targeting higher grade mineralisation in the southern portion of the deposit on 25 metre sections. Higher grade mineralisation is interpreted to occur around the intersection of the M1 and M5 structures. Significant mineralisation occurs beneath the proposed open pit with detailed drilling now supporting the potential for two higher grade shoots (see Figure 2). TAN18-DD202A returned strong results in two zones including **18m at 4.82 g/t Au from 266m and 7m at 3.01 g/t Au from 295m** with which remains open to the southwest and down plunge at depth. Sufficient results have been returned now to support a Scoping Study on the potential of adding underground inventory from beneath the proposed M5 open-pit. This work will commence following the completion of the Feasibility Study which will be delivered in June 2018.

Significant results from recent drilling include:

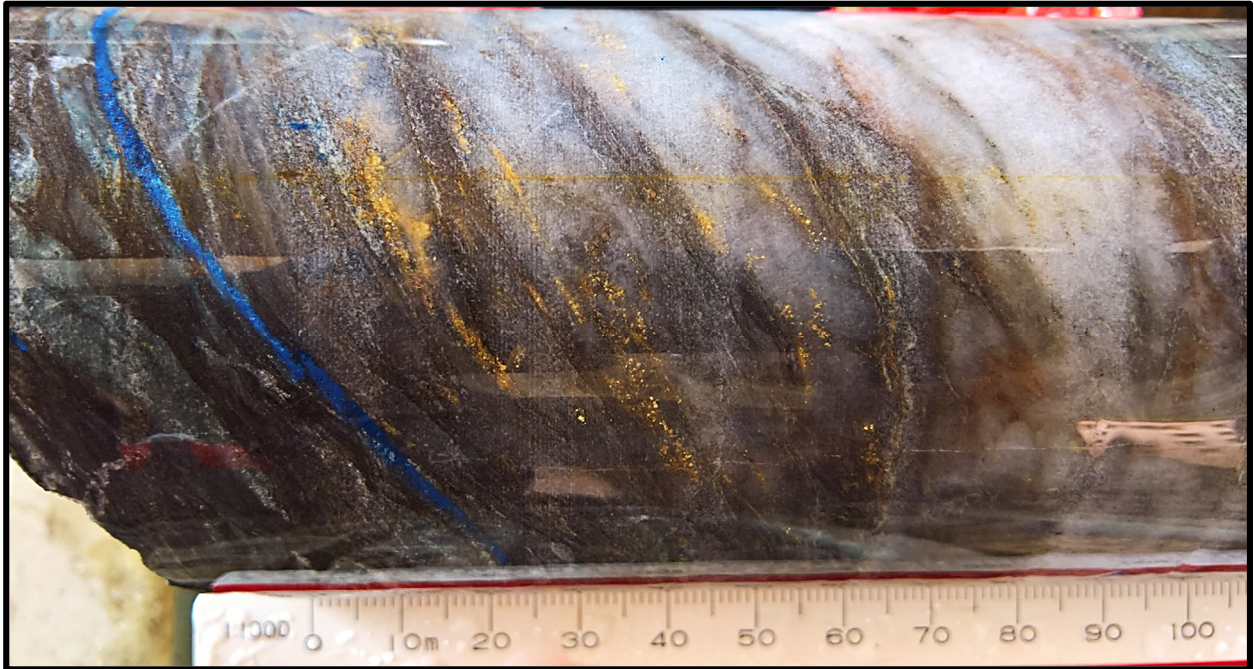
- TAN18-RC429A: 12m at 3.09 g/t Au from 4m
- TAN18-DD198: 3m at 7.56 g/t Au from 225m
- TAN18-DD199: 6m at 3.46 g/t Au from 426m
- TAN18-DD200: 14m at 3.11 g/t Au from 232m
- **TAN18-DD201A: 31m at 2.39 g/t Au from 246m**
- **TAN18-DD202A: 18m at 4.82 g/t Au from 266m**
- TAN18-DD202A: 7m at 3.01 g/t Au from 295m
- TAN18-DD203: 4m at 12.34 g/t Au from 238m
- TAN18-DD207: 13m at 2.61 g/t Au from 454m

Work on the updated Feasibility Study is nearing completion and will incorporate over 300 vertical metres of additional high-grade mineralisation at M1 South, concurrent open pit and underground mining which is designed to bring forward cashflow over the early years of the project life and improved

metallurgical recoveries. A Scoping Study investigating the underground potential of M5 mineralisation will commence in Q3 2018.

Summary long-sections through M1 South and M5 are presented as Figure 1 and 2, along with a location plan as Figure 3. Photos 1 and 2 shows visible gold intercepted in TAN18-DD214A. A summary of significant intercepts is presented in Table 1.

**Photo 1: TAN18-DD214A: Strong visible gold at 578m down hole – Assays pending**



**Photo 2: TAN18-DD214A: Visible gold at 619m down hole – Assays pending**

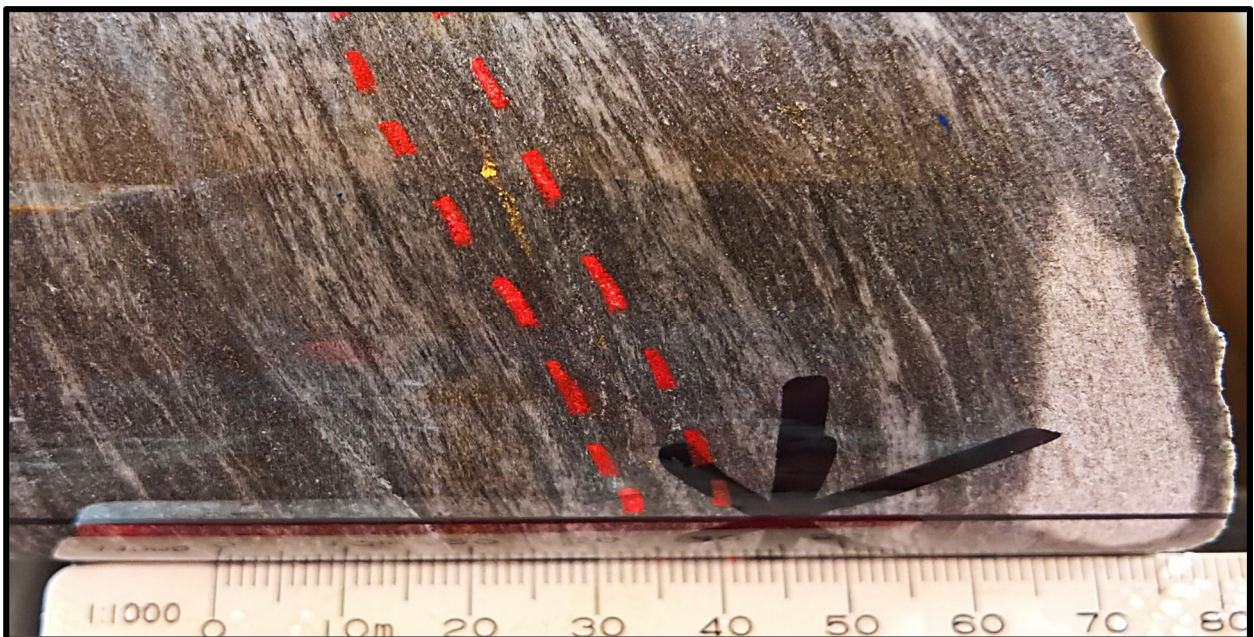


Figure 1: M1 South – Long Section

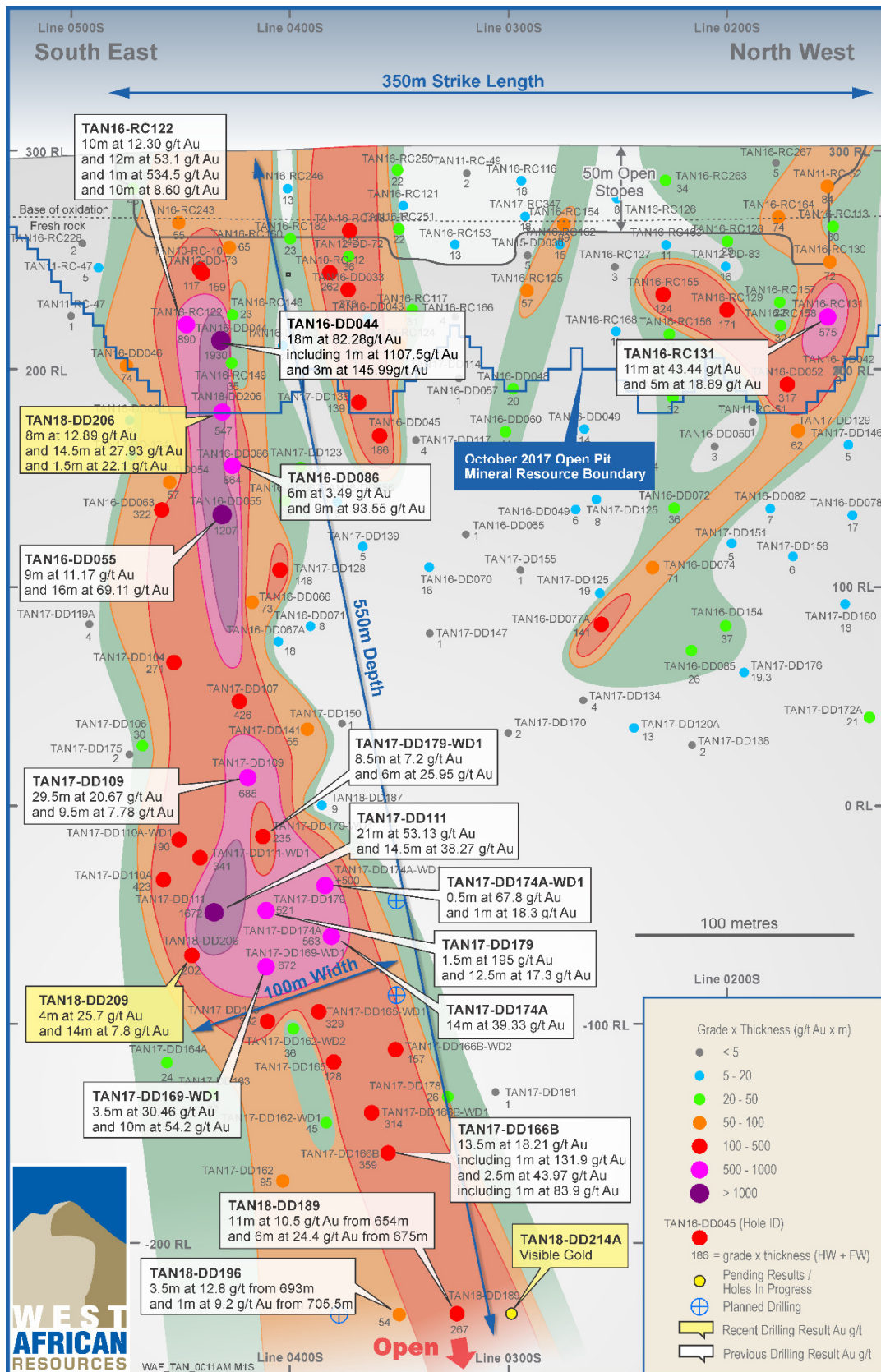


Figure 2: M5 South – Long Section

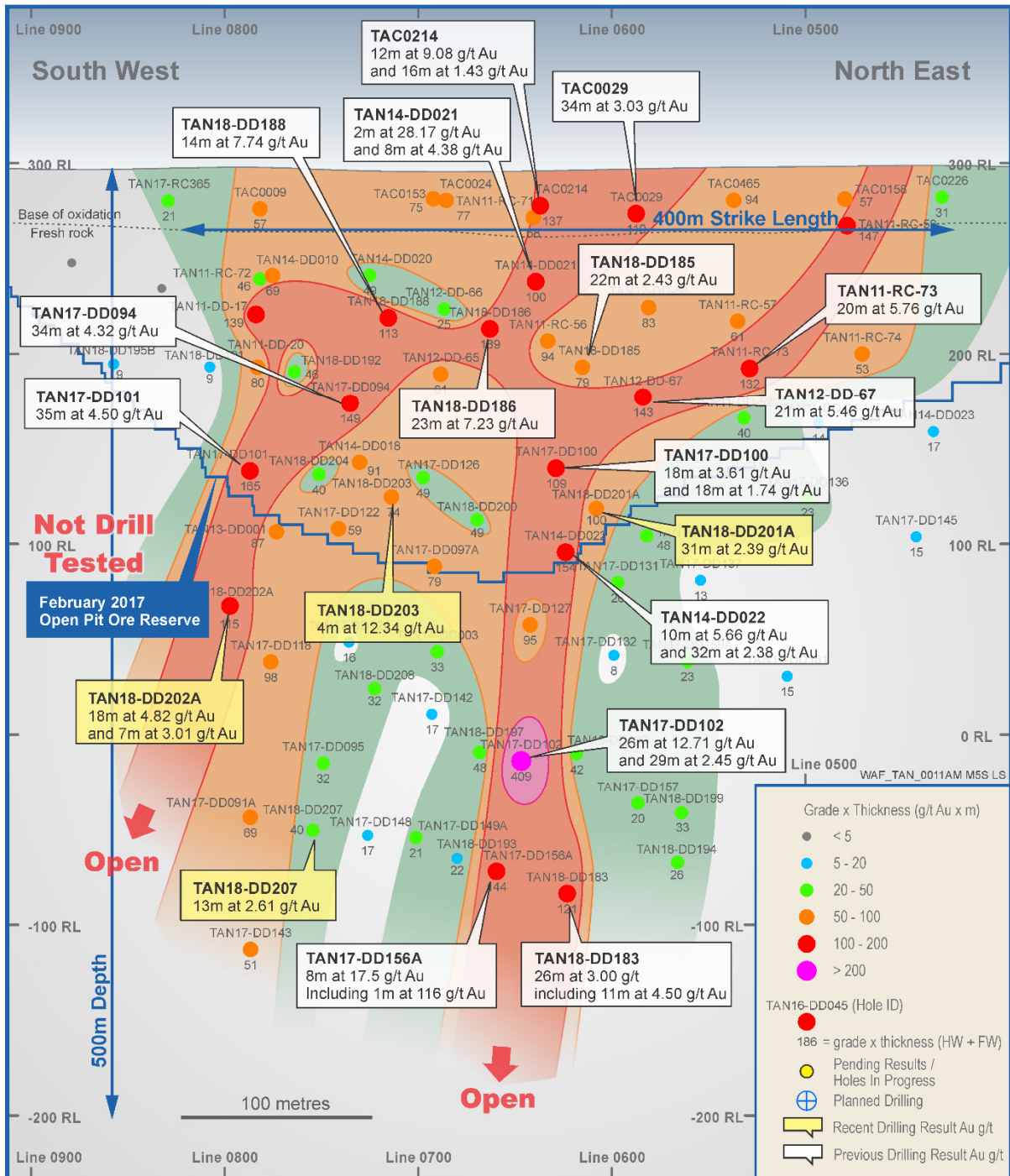


Figure 3: Sanbrado Gold Project – Mineralised Trends and Prospect Locations

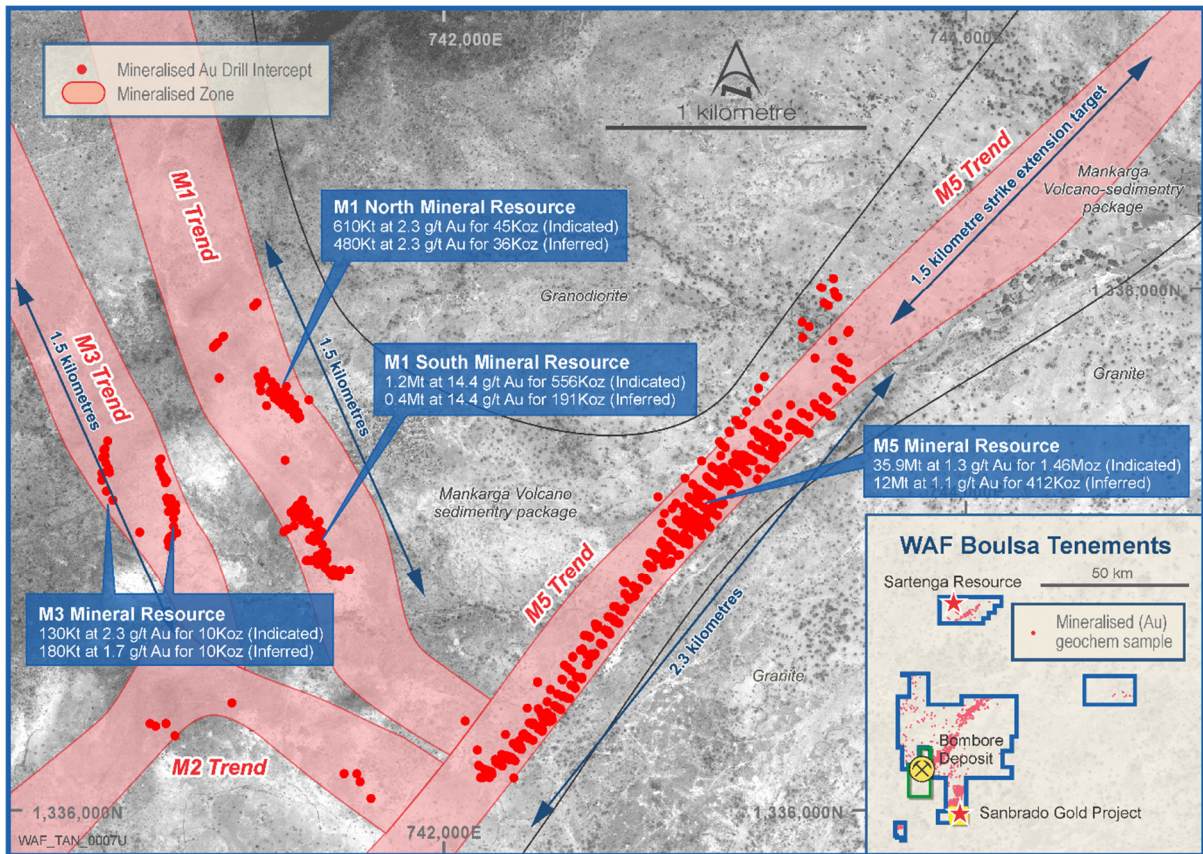


Table 1  
Significant Intercepts 2 g/t Cut Off

Hole ID	From	To	Interval	Au g/t	Dip	Azi	EOH	Easting	Northing	RL	Section	Prospect
TAN18-DD183	438	440	2	3.14	-55	120	549	742006	1336435	298	SW0625	M5
TAN18-DD183	445	449	4	2.89								
TAN18-DD183	454	480	26	2.93								
TAN18-DD184	496.5	506.5	10	5.14	-55	230	544	741801	1337220	300	SE0375	M1S
TAN18-DD185	115	124	9	4.55	-50	120	180	742224	1336312	295	SW0625	M5
TAN18-DD185	145	149	4	3.18								
TAN18-DD186	87	88	1	4.95	-51	120	174	742196	1336270	294	SW0675	M5
TAN18-DD186	106	121	15	10.75								
TAN18-DD187	389.5	391.5	2	3.28	-55	230	450	741748	1337138	297	SE0400	M1S
TAN18-DD188	91	103	12	8.28	-52	120	129	742167	1336227	294	SW0725	M5
TAN18-DD189	654	665	11	11.21	-57	230	774	741899	1337313	301	SE0375	M1S
TAN18-DD189	675	681	6	24.42								
TAN18-DD190	366	371	5	2.27	-55	120	443	742067	1336400	297	SW0625	M5
TAN18-DD190	420	421	1	5.45								
TAN18-DD192	122	124	2	3.77	-52	120	212	742106	1336214	294	SW0775	M5
TAN18-DD192	144	148	4	3.12								
TAN18-DD193	462	465	3	4.68	-60	120	531	741977	1336394	298	SW0675	M5
TAN18-DD194	346	347	1	12.00	-55	120	555	742036	1336479	298	SW0575	M5
TAN18-DD194	422	424	2	3.68								
TAN18-DD194	509	510	1	4.16								
TAN18-DD195B	124	125	1	6.34	-53	120	171	742051	1336131	294	SW0875	M5
TAN18-DD196	693	710	17	4.07	-60	230	757	741916	1337294	301	SE0400	M1S
TAN18-DD197	360	367	7	2.15	-56	120	443	742038	1336359	297	SW0675	M5

**Table 1**  
**Significant Intercepts 2 g/t Cut Off**

Hole ID	From	To	Interval	Au g/t	Dip	Azi	EOH	Easting	Northing	RL	Section	Prospect
TAN18-DD197	407	414	7	2.24								
TAN18-DD198	3	4	1	15.30	-53	120	236	742605	1336878	289	NE0050	M5
TAN18-DD198	225	228	3	7.56								
TAN18-DD199	426	432	6	3.46	-55	120	459	742096	1336442	297	SW0575	M5
TAN18-DD200	232	246	14	3.11	-55	120	306	742109	1336317	295	SW0675	M5
TAN18-DD201A	232	234	2	3.11	-53	120	316	742139	1336363	296	SW0625	M5
TAN18-DD201A	239	240	1	5.47								
TAN18-DD201A	246	277	31	2.39								
TAN18-DD202A	266	284	18	4.82	-53	120	348	741997	1336222	296	SW0825	M5
TAN18-DD202A	295	302	7	3.01								
TAN18-DD203	238	242	4	12.34	-52	120	300	742086	1336276	295	SW0725	M5
TAN18-DD204	197	199	2	2.09	-52	120	301	742065	1336246	295	SW0725	M5
TAN18-DD204	219	220	1	5.71								
TAN18-DD206	126	134	8	12.89	-52	225	183	741640	1336992	301	SE0425	M1S
TAN18-DD206	142.5	157	14.5	27.93								
TAN18-DD206	170.5	172	1.5	22.10								
TAN18-DD207	156	157	1	4.05	-55	120	522	741926	1336325	298	SW0775	M5
TAN18-DD207	454	467	13	2.61								
TAN18-DD208	347	348	1	6.21	-55	120	405	742011	1336315	296	SW0725	M5
TAN18-DD208	354	360	6	3.20								
TAN18-DD209	440.5	444.5	4	22.17	-55	230	555	741834	1337121	298	SE0475	M1S
TAN18-DD209	482	496	14	7.55								
TAN18-DD210	92	93	1	4.64	-52	120	132	743456	1337768	284	NE1250	M5
TAN18-DD211	132	133	1	4.39	-52	120	160	743417	1337672	284	NE1150	M5
TAN18-RC385	191	192	1	5.21	-53	221	200	741875	1336801	293	SE0725	M1S
TAN18-RC388	15	23	8	3.14	-52	224	132	742070	1336575	298	SE1025	M1S
TAN18-RC393	74	75	1	49.70	-50	225	200	741586	1336798	297	SE0525	M1S
TAN18-RC398	62	72	10	3.80	-52	225	128	742068	1337073	298	SE0675	M1S
TAN18-RC398	101	102	1	5.11								
TAN18-RC418	198	199	1	6.44	-52	120	200	742162	1336549	296	SW0450	M5

- \* denotes ending in mineralisation
- All holes are diamond holes.
- All reported intersections from the current 2018 program are assayed at 1m intervals for M5 and 0.5m for M1 where possible.
- Sample preparation and Fire Assay conducted by SGS Ouagadougou. Assayed by 50g fire assay with AAS finish. All samples >5 g/t Au are checked by 50g fire assay with gravimetric finish.
- Mineralised intervals for DD reported >2g/t Au with a maximum of 5 m of internal dilution of less than 2/t gold. No top cut applied.
- QA/QC protocol: we insert one blank, one standard and one duplicate for every 17 samples (3 QA/QC within every 20 samples).

#### **Competent Persons and Qualified Persons Statement**

Information in this announcement that relates to exploration results, exploration targets or mineral resources is based on information compiled by Mr Richard Hyde, a Director, who is a Member of The Australian Institute of Mining and Metallurgy and Australian Institute of Geoscientists. Mr Hyde has sufficient experience which is relevant to the style of mineralisation and type of deposit under consideration and to the activity which he is undertaking to qualify as a Competent Person as defined in the 2012 Edition of the Australasian Code for Reporting of Exploration Results, Mineral Resources and Ore Reserves (the JORC Code) and a Qualified Person under National Instrument 43-101. Mr Hyde consents to the inclusion in this announcement of the statements based on his information in the form and context in which they appear.

**Forward Looking Information**

This news release contains “forward-looking information” within the meaning of applicable Canadian and Australian securities legislation, including information relating to West African's future financial or operating performance may be deemed “forward looking”. All statements in this news release, other than statements of historical fact, that address events or developments that West African expects to occur, are “forward-looking statements”. Forward-looking statements are statements that are not historical facts and are generally, but not always, identified by the words “expects”, “does not expect”, “plans”, “anticipates”, “does not anticipate”, “believes”, “intends”, “estimates”, “projects”, “potential”, “scheduled”, “forecast”, “budget” and similar expressions, or that events or conditions “will”, “would”, “may”, “could”, “should” or “might” occur. All such forward-looking statements are based on the opinions and estimates of the relevant management as of the date such statements are made and are subject to important risk factors and uncertainties, many of which are beyond West African’s ability to control or predict. Forward-looking statements are necessarily based on estimates and assumptions that are inherently subject to known and unknown risks, uncertainties and other factors that may cause actual results, level of activity, performance or achievements to be materially different from those expressed or implied by such forward-looking statements. In the case of West African, these facts include their anticipated operations in future periods, planned exploration and development of its properties, and plans related to its business and other matters that may occur in the future. This information relates to analyses and other information that is based on expectations of future performance and planned work programs. Statements concerning mineral resource estimates may also be deemed to constitute forward-looking information to the extent that they involve estimates of the mineralization that will be encountered if a mineral property is developed.

Forward-looking information is subject to a variety of known and unknown risks, uncertainties and other factors which could cause actual events or results to differ from those expressed or implied by the forward-looking information, including, without limitation: exploration hazards and risks; risks related to exploration and development of natural resource properties; uncertainty in West African’s ability to obtain funding; gold price fluctuations; recent market events and conditions; risks related to the uncertainty of mineral resource calculations and the inclusion of inferred mineral resources in economic estimation; risks related to governmental regulations; risks related to obtaining necessary licenses and permits; risks related to their business being subject to environmental laws and regulations; risks related to their mineral properties being subject to prior unregistered agreements, transfers, or claims and other defects in title; risks relating to competition from larger companies with greater financial and technical resources; risks relating to the inability to meet financial obligations under agreements to which they are a party; ability to recruit and retain qualified personnel; and risks related to their directors and officers becoming associated with other natural resource companies which may give rise to conflicts of interests. This list is not exhaustive of the factors that may affect West African’s forward-looking information. Should one or more of these risks and uncertainties materialize, or should underlying assumptions prove incorrect, actual results may vary materially from those described in the forward-looking information.

West African’s forward-looking information is based on the reasonable beliefs, expectations and opinions of their respective management on the date the statements are made, and West African does not assume any obligation to update forward looking information if circumstances or management’s beliefs, expectations or opinions change, except as required by law. For the reasons set forth above, investors should not place undue reliance on forward-looking information. For a complete discussion with respect to West African, please refer to West African’s financial statements and related MD&A, all of which are filed on SEDAR at [www.sedar.com](http://www.sedar.com).

Neither TSX Venture Exchange nor its Regulation Services Provider (as that term is defined in the policies of the TSX Venture Exchange) accepts responsibility for the adequacy or accuracy of this release.



## JORC Table 1, Sections 1-2

## Section 1 Sampling Techniques and Data

Criteria	JORC Code Explanation	Commentary
<b>Sampling Techniques</b>	<ul style="list-style-type: none"> <li>Nature and quality of sampling (e.g. cut channels, random chips, or specific specialised industry standard measurement tools appropriate to the minerals under investigation, such as downhole gamma sondes, or handheld XRF instruments, etc.). These examples should not be taken as limiting the broad meaning of sampling.</li> <li>Include reference to measures taken to ensure sample representivity and the appropriate calibration of any measurement tools or systems used.</li> <li>Aspects of the determination of mineralisation that are Material to the Public Report. In cases where 'industry standard' work has been done this would be relatively simple (e.g. 'reverse circulation drilling was used to obtain 1m samples from which 3kg was pulverised to produce a 30g charge for fire assay'). In other cases more explanation may be required, such as where there is coarse gold that has inherent sampling problems. Unusual commodities or mineralisation types (e.g. submarine nodules) may warrant disclosure of detailed information.</li> </ul>	<ul style="list-style-type: none"> <li>The area of the Mankarga 5 resource was drilled using Reverse Circulation (RC), Aircore (AC) and Diamond drillholes (DD) on a nominal 50m x 25m grid spacing. A total of 723 AC holes (23,314m), 71 DC holes (14,537m), 41 DT holes (8,739m) and 69 RC holes (7,078m) were drilled by WAF between 2013 and 2017. A total of 60 RC holes (7,296.2m) and 71 DD holes (15,439.6m) were drilled by Channel Resources (CHU) in 2010-2012. Holes were angled towards 120° or 300° magnetic at declinations of between -50° and -60°, to optimally intersect the mineralised zones.</li> <li>The area of the Mankarga 1 resource was drilled using Reverse Circulation (RC), Aircore (AC) and Diamond drillholes (DD) on a nominal 25m x 20m grid spacing. A total of 217 AC holes (3,290m), 42 DC holes (12,041m), 52 DT holes (14,113m) and 115 RC holes (12,602m) were drilled by WAF between 2015 and 2017. A total of 23 RC holes (3,060.0m) and 7 DD holes (1,199.0m) were drilled by Channel Resources (CHU) in 2010-2012. Holes were angled towards 020°, 045°, 180° or 225° magnetic at declinations of between -50° and -60°, to optimally intersect the mineralised zones.</li> <li>All RC samples were weighed to determine recoveries. WAF and CHU RC samples were split and sampled at 1m and 2m intervals respectively using a three-tier riffle splitter. Diamond core is a combination of HQ, NQ2 and NQ3 sizes and all Diamond core was logged for lithological, alteration, geotechnical, density and other attributes. In addition, WAF Diamond core was logged for structural attributes. Half-core sampling was completed at 1m and 1.5m intervals for WAF and CHU respectively. QAQC procedures were completed as per industry standard practices (i.e. certified standards, blanks and duplicate sampling were sent with laboratory sample dispatches).</li> <li>CHU RC samples were dispatched to Abilab Burkina SARL (ALS Laboratory Group) in Ouagadougou. CHU DD samples were dispatched to SGS Burkina Faso SA (SGS) in Ouagadougou and WAF RC and DD samples were dispatched to BIGS Global Burkina SARL (BIGS) and SGS (2017) in Ouagadougou. The Diamond core samples were crushed, dried and pulverised (total prep) to produce a sub sample for analysis for gold by 50g standard fire assay method (FA) followed by an atomic absorption spectrometry (AAS) finish. WAF Samples over 5 g/t Au are checked with Fire Assay with a Gravimetric Finish. WAF and CHU RC drilling was used to obtain 1m and 2m composite samples respectively from which 3kg was pulverised (total prep) to produce a sub sample for assaying as above.</li> </ul>
<b>Drilling Techniques</b>	<ul style="list-style-type: none"> <li>Drill type (e.g. core, reverse circulation, open-hole hammer, rotary air blast, auger, Bangka, sonic, etc.) and details (e.g. core diameter, triple or standard tube, depth of diamond tails, face-sampling bit or other type, whether core is oriented and if so, by what method, etc.).</li> </ul>	<ul style="list-style-type: none"> <li>Diamond drilling in the resource area comprises NQ2, NQ3 or HQ sized core. RC depths range from 13m to 204m and DD depths range from 49.5m to 667m. WAF Diamond core was oriented using a combination of orientation spear with &gt;50% of orientations rated as "confident", Reflex ACT II system and Coretell® ORIshot orientation system. RC and AC drilling within the resource area comprises 5.5 inch and 4.5 inch diameter face sampling hammer and aircore blade drilling.</li> </ul>
<b>Drill Sample Recovery</b>	<ul style="list-style-type: none"> <li>Method of recording and assessing core and chip sample recoveries and results assessed.</li> <li>Measures taken to maximise sample recovery and ensure representative nature of the samples.</li> <li>Whether a relationship exists between sample recovery and grade and whether sample bias may have occurred due to preferential loss/gain of fine/coarse material.</li> </ul>	<ul style="list-style-type: none"> <li>Diamond core and RC recoveries are logged and recorded in the database. Overall recoveries are &gt;90% for the diamond core and &gt;70% for the RC; there are no core loss issues or significant sample recovery problems. A technician is always present at the rig to monitor and record recovery.</li> <li>Diamond core is reconstructed into continuous runs on an angle iron cradle for orientation marking. Depths are checked against the depth given on the core blocks and rod counts are routinely carried out by the drillers. RC samples were visually checked for recovery, moisture and contamination.</li> <li>The resource is defined by DD and RC drilling, which have high sample recoveries. No relationship between sample recovery and grade have been identified at the project. The consistency of the mineralised intervals and density of drilling is considered to preclude any issue of sample bias due to material loss or gain.</li> </ul>
<b>Logging</b>	<ul style="list-style-type: none"> <li>Whether core and chip samples have been geologically and geotechnically logged to a level of detail to support appropriate Mineral Resource estimation, mining studies</li> </ul>	<ul style="list-style-type: none"> <li>Geotechnical logging was carried out on all diamond drillholes for recovery, RQD and number of defects (per interval). Information on structure type, dip, dip direction, alpha angle, beta angle, texture,</li> </ul>

Criteria	JORC Code Explanation	Commentary
	<p>and metallurgical studies.</p> <ul style="list-style-type: none"> <li>Whether logging is qualitative or quantitative in nature. Core (or costean, channel, etc.) photography.</li> <li>The total length and percentage of the relevant intersections logged.</li> </ul>	<p>shape, roughness and fill material is stored in the structure/geotechnical table of the database.</p> <ul style="list-style-type: none"> <li>Logging of diamond core and RC samples recorded lithology, mineralogy, mineralisation, structural (WAF DD only), weathering, alteration, colour and other features of the samples. Core was photographed in both dry and wet form.</li> <li>All drilling has been logged to standard that is appropriate for the category of Resource which is being reported.</li> </ul>
<b>Sub-Sampling Techniques and Sample Preparation</b>	<ul style="list-style-type: none"> <li>If core, whether cut or sawn and whether quarter, half or all core taken.</li> <li>If non-core, whether riffled, tube sampled, rotary split, etc. and whether sampled wet or dry.</li> <li>For all sample types, the nature, quality and appropriateness of the sample preparation technique.</li> <li>Quality control procedures adopted for all sub-sampling stages to maximise representivity of samples.</li> <li>Measures taken to ensure that the sampling is representative of the in situ material collected, including for instance results for field duplicate/second-half sampling.</li> <li>Whether sample sizes are appropriate to the grain size of the material being sampled.</li> </ul>	<ul style="list-style-type: none"> <li>Core was cut in half onsite using a CM core cutter. All samples were collected from the same side of the core.</li> <li>RC samples were collected on the rig using a three tier splitter. All samples were dry.</li> <li>The sample preparation for all samples follows industry standard practice. The samples were dispatched to the laboratory (as per section 'Sampling Techniques') where they were crushed, dried and pulverised to produce a sub sample for analysis. Sample preparation involved oven drying, coarse crushing, followed by total pulverisation LM2 grinding mills to a grind size of 90% passing 75 microns.</li> <li>Field QC procedures involve the use of certified reference material as assay standards, blanks and duplicates. The insertion rate of these averaged 3:20.</li> <li>Field duplicates were taken on 1m and 2m composites for WAF and CHU RC samples respectively, using a riffle splitter.</li> <li>The sample sizes are considered to be appropriate to correctly represent the style of mineralisation, the thickness and consistency of the intersections.</li> </ul>
<b>Quality of Assay Data and Laboratory Tests</b>	<ul style="list-style-type: none"> <li>The nature, quality and appropriateness of the assaying and laboratory procedures used and whether the technique is considered partial or total.</li> <li>For geophysical tools, spectrometers, handheld XRF instruments, etc., the parameters used in determining the analysis including instrument make and model, reading times, calibrations factors applied and their derivation, etc.</li> <li>Nature of quality control procedures adopted (e.g. standards, blanks, duplicates, external laboratory checks) and whether acceptable levels of accuracy (i.e. lack of bias) and precision have been established.</li> </ul>	<ul style="list-style-type: none"> <li>The laboratory used an aqua regia digest followed by fire assay with an AAS finish for gold analysis.</li> <li>No geophysical tools were used to determine any element concentrations used in this Resource Estimate.</li> <li>Sample preparation checks for fineness were carried out by the laboratory as part of their internal procedures to ensure the grind size of 90% passing 75 micron was being attained. Laboratory QAQC involves the use of internal lab standards using certified reference material, blanks, splits and duplicates as part of the in house procedures. Certified reference materials, having a good range of values, were inserted blindly and randomly. Results highlight that sample assay values are accurate and that contamination has been contained.</li> <li>Repeat or duplicate analysis for samples reveals that precision of samples is within acceptable limits. For Diamond core, one blank and one standard is inserted every 18 core samples and no duplicates. For RC samples, one blank, one standard and one duplicate is inserted every 17 samples.</li> </ul>
<b>Verification of Sampling and Assaying</b>	<ul style="list-style-type: none"> <li>The verification of significant intersections by either independent or alternative company personnel.</li> <li>The use of twinned holes.</li> <li>Documentation of primary data, data entry procedures, data verification, data storage (physical and electronic) protocols.</li> <li>Discuss any adjustment to assay data.</li> </ul>	<ul style="list-style-type: none"> <li>The CP has visually verified significant intersections in diamond core and RC drilling as part of the Resource Estimation process.</li> <li>Six RC holes and one diamond hole were twinned by diamond holes (2 drilled by WAF, 5 by CHU) for the Mankarga 5 prospect. Four RC holes were twinned by RC holes and two further RC holes were twinned by diamond holes (all drilled by WAF) at the Mankarga 1 prospect. Results returned from the twins were consistent with original holes.</li> <li>Primary data was collected using a set of company standard Excel™ templates on Toughbook™ laptop computers using lookup codes. The information was validated on-site by the Company's database technicians and then merged and validated into a final Access™ database by the company's database manager.</li> <li>The results confirmed the initial intersection geology.</li> <li>No adjustments or calibrations were made to any assay data used in this estimate.</li> </ul>
<b>Location of Data Points</b>	<ul style="list-style-type: none"> <li>Accuracy and quality of surveys used to locate drillholes (collar and down-hole surveys), trenches, mine workings and other locations used in Mineral Resource estimation.</li> <li>Specification of the grid system used.</li> <li>Quality and adequacy of topographic control.</li> </ul>	<ul style="list-style-type: none"> <li>All drillholes have been located by DGPS in UTM grid WGS84 Z30N. WAF DD downhole surveys were completed at least every 24m and at the end of hole using a Reflex downhole survey tool. CHU DD downhole surveys were completed every 3m with a Reflex EZ-Trac survey tool and CHU RC holes were surveyed every 5m using a GYRO Smart survey instrument.</li> <li>The grid UTM Zone 30 WGS 84 was used. A local grid orientated</li> </ul>

Criteria	JORC Code Explanation	Commentary
		<p>parallel to the strike of Mankarga (bearing 030 UTM) has recently been implemented and will be used for future work</p> <ul style="list-style-type: none"> <li>Ground DGPS, Real time topographical survey and a drone survey was used for topographic control.</li> </ul>
<b>Data Spacing and Distribution</b>	<ul style="list-style-type: none"> <li>Data spacing for reporting of Exploration Results.</li> <li>Whether the data spacing and distribution is sufficient to establish the degree of geological and grade continuity appropriate for the Mineral Resource and Ore Reserve estimation procedure(s) and classifications applied.</li> <li>Whether sample compositing has been applied.</li> </ul>	<ul style="list-style-type: none"> <li>The nominal drillhole spacing is 50m (northeast) by 20m (northwest) for the Mankarga 5 prospect, 25m (northwest) by 20m (northeast) for the Mankarga 1 prospect</li> <li>The mineralised domains have demonstrated sufficient continuity in both geology and grade to support the definition of Inferred and Indicated Mineral Resources as per the guidelines of the 2012 JORC Code.</li> </ul>
<b>Orientation of Data in Relation to Geological Structure</b>	<ul style="list-style-type: none"> <li>Whether the orientation of sampling achieves unbiased sampling of possible structures and the extent to which this is known, considering the deposit type.</li> <li>If the relationship between the drilling orientation and the orientation of key mineralised structures is considered to have introduced a sampling bias, this should be assessed and reported if material.</li> </ul>	<ul style="list-style-type: none"> <li>The majority of the data is drilled to either magnetic 120° or 300° orientations for Mankarga 5 and magnetic 045° or 225° orientations for Mankarga 1 and Mankarga3, which is orthogonal/perpendicular to the orientation of the mineralised trend. The bulk of the drilling is almost perpendicular to the mineralised domains. Structural logging based on oriented core indicates that the main mineralisation controls are largely perpendicular to drill direction.</li> <li>No orientation based sampling bias has been identified in the data at this point.</li> </ul>
<b>Sample Security</b>	<ul style="list-style-type: none"> <li>The measures taken to ensure sample security.</li> </ul>	<ul style="list-style-type: none"> <li>Chain of custody is managed by WAF. Samples are stored on site and delivered by WAF personnel to BIGS Ouagadougou for sample preparation. Whilst in storage, they are kept under guard in a locked yard. Tracking sheets are used to track the progress of batches of samples.</li> </ul>
<b>Audits or Reviews</b>	<ul style="list-style-type: none"> <li>The results of any audits or reviews of sampling techniques and data.</li> </ul>	<ul style="list-style-type: none"> <li>WAF personnel completed site visits and data review during the due diligence period prior to acquiring Channel Resources Ltd. No material issues were highlighted. During 2012 AMEC completed a site visit and data review as part of the NI43-101 report dated 29 July 2012. No material issues were noted. between May 2014 and May 2017 the CP has completed several site visits and data review as part of this Resource Estimate.</li> </ul>

## Section 2 Reporting of Exploration Results

Criteria	JORC Code Explanation	Commentary
<b>Mineral Tenement and Land Tenure Status</b>	<ul style="list-style-type: none"> <li>Type, reference name/number, location and ownership including agreements or material issues with third parties such as joint ventures, partnerships, overriding royalties, native title interests, historical sites, wilderness or national park and environmental settings.</li> <li>The security of the tenure held at the time of reporting along with any known impediments to obtaining a licence to operate in the area.</li> </ul>	<ul style="list-style-type: none"> <li>The Sanbrado project comprises a granted Mining Licence (No 2017 – 104/PRES/PM/MEMC/MINEFID/MEEVCC) covering 26km2 and a single Exploration Licence (N2017/014/MEMC/SG/DGCMIM) covering 90km2.</li> <li>All licences, permits and claims are granted for gold. All fees have been paid, and the permits are valid and up to date with the Burkinabe authorities. The payment of gross production royalties are provided for by the Mining Code and the amount of royalty to be paid for is 5%.</li> </ul>
<b>Exploration Done by Other Parties</b>	<ul style="list-style-type: none"> <li>Acknowledgment and appraisal of exploration by other parties.</li> </ul>	<ul style="list-style-type: none"> <li>Exploration activities on the original Tanlouka permit by previous workers have included geological mapping, rock and chip sampling, geophysical surveys, geochemical sampling and drilling, both reverse circulation and core. This work was undertaken by Channel Resources personnel and their consultants from 1994 until 2012.</li> </ul>
<b>Geology</b>	<ul style="list-style-type: none"> <li>Deposit type, geological setting and style of mineralisation.</li> </ul>	<ul style="list-style-type: none"> <li>The project is located within a strongly arcuate volcano-sedimentary northeast-trending belt that is bounded to the east by the Tiébéle-Dori-Markoye Fault, one of the two major structures subdividing Burkina Faso into three litho-tectonic domains. The geology of the Tanlouka area is characterised by metasedimentary and volcanosedimentary rocks, intruded by mafic, diorite and granodiorite intrusions. The Mankarga prospect area is characterised by a sedimentary pile which is mostly composed of undifferentiated pelitic and psammitic metasediments as well as volcanosedimentary units. This pile has been intruded by a variably porphyritic granodiorite, overprinted by shearing and mylonites in places, and is generally parallel to sub-parallel with the main shear orientation. In a more regional context, the sedimentary pile appears “wedged” between regional granites and granodiorites. The alteration mineralogy varies from chloritic to siliceous, albitic, calcitic and sericite-muscovite. Gold mineralisation in the project area is mesothermal orogenic in origin and structurally controlled.</li> </ul>

Criteria	JORC Code Explanation	Commentary
		The project area is interpreted to host shear zone type quartz-vein gold mineralisation. Observed gold mineralisation at the Mankarga prospects appears associated with quartz vein and veinlet arrays, silica, sulphide and carbonate-albite, tourmaline-biotite alteration. Gold is free and is mainly associated with pyrrhotite, pyrite, minor chalcopyrite and arsenopyrite disseminations and stringers.
<b>Drillhole Information</b>	<ul style="list-style-type: none"> <li>A summary of all information material to the understanding of the exploration results including a tabulation of the following information for all Material drillholes: <ul style="list-style-type: none"> <li>easting and northing of the drillhole collar</li> <li>elevation or RL (Reduced Level - elevation above sea level in metres) of the drillhole collar</li> <li>dip and azimuth of the hole</li> <li>downhole length and interception depth</li> <li>hole length.</li> </ul> </li> <li>If the exclusion of this information is justified on the basis that the information is not Material and this exclusion does not detract from the understanding of the report, the Competent Person should clearly explain why this is the case.</li> </ul>	<ul style="list-style-type: none"> <li>Significant intercepts that form the basis of this Resource Estimate have been released to the ASX in previous announcements (available on the WAF website) with appropriate tables incorporating Hole ID, Easting, Northing, Dip, Azimuth, Depth and Assay Data. Appropriate maps and plans also accompany this Resource Estimate announcement.</li> <li>Drilling completed by Channel Resources is documented in the publically available report "NI 43-101 Technical Report on Mineral Resources for the Mankarga 5 Gold Deposit Tanlouka Property, Burkina Faso for Channel Resources Ltd" prepared by AMEC Consultants and dated 17 August 2012.</li> <li>A complete listing of all drillhole details is not necessary for this report which describes the Mankarga5 and Mankarga 1 Gold Resource and in the Competent Person's opinion the exclusion of this data does not detract from the understanding of this report.</li> </ul>
<b>Data Aggregation Methods</b>	<ul style="list-style-type: none"> <li>In reporting Exploration Results, weighting averaging techniques, maximum and/or minimum grade truncations (e.g. cutting of high grades) and cut off grades are usually Material and should be stated.</li> <li>Where aggregate intercepts incorporate short lengths of high grade results and longer lengths of low grade results, the procedure used for such aggregation should be stated and some typical examples of such aggregations should be shown in detail.</li> <li>The assumptions used for any reporting of metal equivalent values should be clearly stated.</li> </ul>	<ul style="list-style-type: none"> <li>All intersections are assayed on one meter intervals. No top cuts have been applied to exploration results. Mineralised intervals are reported with a maximum of 2m of internal dilution of less than 0.5g/t Au. Mineralised intervals are reported on a weighted average basis.</li> </ul>
<b>Relationship Between Mineralisation Widths and Intercept Lengths</b>	<ul style="list-style-type: none"> <li>These relationships are particularly important in the reporting of Exploration Results.</li> <li>If the geometry of the mineralisation with respect to the drillhole angle is known, its nature should be reported.</li> <li>If it is not known and only the downhole lengths are reported, there should be a clear statement to this effect (e.g. 'downhole length, true width not known').</li> </ul>	<ul style="list-style-type: none"> <li>The orientation of the mineralised zone has been established and the majority of the drilling was planned in such a way as to intersect mineralisation in a perpendicular manner or as close as practicable. Topographic limitations were evident for some holes and these were drilled from less than ideal orientations. However, where possible, earthworks were carried out in order to accomplish drill along optimum orientations.</li> </ul>
<b>Diagrams</b>	<ul style="list-style-type: none"> <li>Appropriate maps and sections (with scales) and tabulations of intercepts should be included for any significant discovery being reported These should include, but not be limited to a plan view of drillhole collar locations and appropriate sectional views.</li> </ul>	<ul style="list-style-type: none"> <li>The appropriate plans and sections have been included in the body of this document.</li> </ul>
<b>Balanced Reporting</b>	<ul style="list-style-type: none"> <li>Where comprehensive reporting of all Exploration Results is not practicable, representative reporting of both low and high grades and/or widths should be practiced to avoid misleading reporting of Exploration Results.</li> </ul>	<ul style="list-style-type: none"> <li>All grades, high and low, are reported accurately with "from" and "to" depths and "hole identification" shown.</li> </ul>
<b>Other Substantive Exploration Data</b>	<ul style="list-style-type: none"> <li>Other exploration data, if meaningful and material, should be reported including (but not limited to): geological observations; geophysical survey results; geochemical survey results; bulk samples – size and method of treatment; metallurgical test results; bulk density, groundwater, geotechnical and rock characteristics; potential deleterious or contaminating substances.</li> </ul>	<ul style="list-style-type: none"> <li>Detailed metallurgical test work has been carryout as part of the FS. Test work shows that the ore is amenable to conventional crushing, grinding and CIL processing. LOM recoveries have been determined to be 90.7%</li> </ul>
<b>Further Work</b>	<ul style="list-style-type: none"> <li>The nature and scale of planned further work (e.g. tests for lateral extensions or depth extensions or large-scale step-out drilling).</li> <li>Diagrams clearly highlighting the areas of possible extensions, including the main geological interpretations and future drilling areas, provided this information is not commercially sensitive.</li> </ul>	<ul style="list-style-type: none"> <li>A program of dedicated metallurgical and geotechnical drillholes has been completed. Some grade control pattern test work is planned prior to commencing mining.</li> </ul>