

1 June 2018

ASX ANNOUNCEMENT

ASIC consent to resignation of auditor

BlackEarth Minerals NL (ASX: BEM) (the Company or BlackEarth) advises that it sought the resignation of its auditor, subject to ASIC approval. ASIC has advised it consents to the resignation subject to disclosure requirements being reported by way of a continuous disclosure notice, that would not deal with other matters. In accordance with those requirements, the Company advises as listed below: which is consistent with correspondence lodged with ASIC as part of the process.

Details of Outgoing auditor:	William Buck Audit (WA) Pty Ltd
Details of the proposed auditor:	Bentleys Audit & Corporate (WA) Pty Ltd
The reason for change in auditor:	For more efficient scheduling of the audit, process and cost efficiencies.

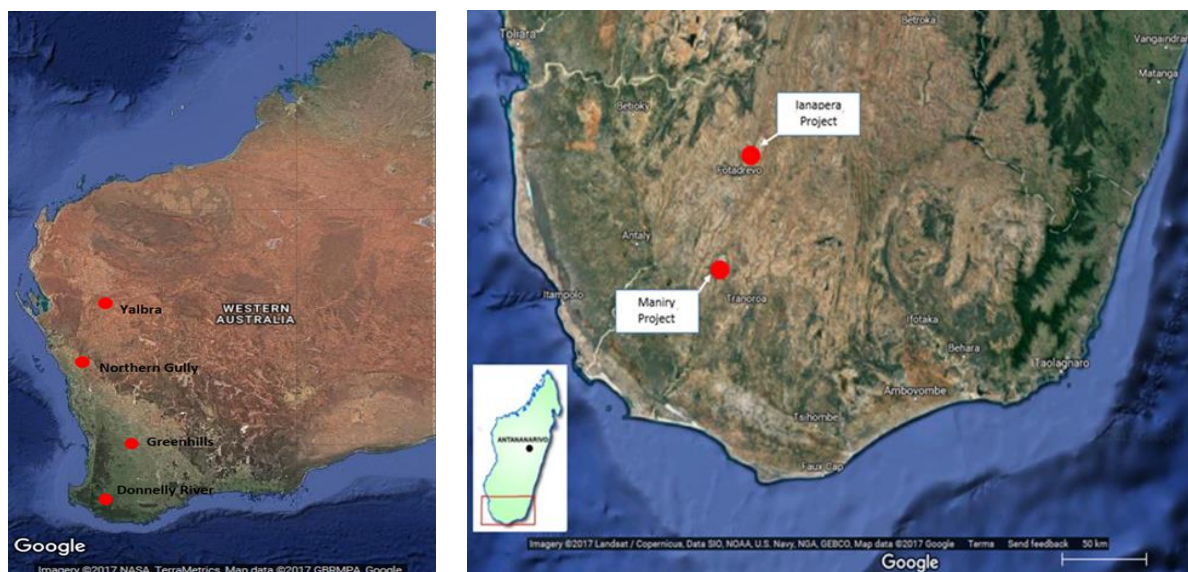
MEDIA CONTACTS

Tom Revy, BlackEarth Minerals NL

08 6145 0289 | 0411 475 376

About BlackEarth Minerals NL

BlackEarth Minerals NL is an ASX listed company focused on the exploration and development of its 100% owned Madagascan and Western Australian graphite projects.



The location of the Company's graphite projects: Madagascar (Maniry & Ianapera - above), Western Australia (Yalbra, Northern Gully, Greenhills & Donnelly River - left)

The Company's Madagascan projects consist of two primary exploration areas: the main Maniry project ("Maniry") in the south, and the Ianapera project ("Ianapera") in the north. Maniry is highly prospective for large-scale, high-quality graphite deposits and is currently at an advanced evaluation stage pending additional work to establish an initial resource, which is expected to be completed by mid-2018. Results, from samples taken within 50m of surface, have been received of 10m at 10.2% TGC, 12m at 11.6% TGC and 14m at 11.3% TGC, as disclosed in the Company's Replacement Prospectus dated 24 November 2017.

Ianapera is located within 10 km of NextSource Material Inc's (TSX: NEXT) Molo graphite deposit. It consists of a series of high-grade outcrops, up to 800m long and 30m wide, of graphite mineralisation within a broader graphite trend. These high-grade (15%+ TGC), near-surface exposures of graphite mineralisation lie over the top of a large conductive body, which indicates the potential presence of a large graphitic mineralised system.

The Company's Western Australian graphite assets include project areas that have been partially explored by a number of companies in the past, with encouraging results reported from several locations. The Company researched graphite data via the extensive historical Western Australian Mineral Exploration (WAMEX) database, which has already led to the identification of targets which will be the focus of initial exploration activities.

For more information – www.blackearthminerals.com.au