

**14 June 2018**

## Exploration commences at Edinburgh Park Project

Forte Consolidated Limited (ASX:FRC) is pleased to report the commencement of exploration activities on its North Queensland Exploration Permits (EPM) south west of Townsville, the newly acquired Edinburgh Park Project.

### Highlights:

- As announced to the market on 26<sup>th</sup> April 2018, the 'Edinburgh Park' project comprises two contiguous EPM's (26527 & 26810) and is considered highly prospective early stage exploration ground with identified epithermal and porphyry mineralisation across a number of delineated prospects.
- The first stage of exploration will involve the acquisition of high-resolution aeromagnetic and radiometric data, remote sensing surveys, and surface exploration comprising geological mapping and geochemical sampling (rock chip and soil).
- The program has commenced this month and is anticipated to take 2-3 months to complete with strong news flow as results are received and interpreted.

In line with a strategy to increase the Company's gold exploration footprint in the highly prospective Mt Carlton region, and based on regional prospectivity criteria, Forte has been granted EPM 26527 and recently applied for EPM 26810, collectively known as the Edinburgh Park Project.

Edinburgh Park is a "grass roots stage" exploration project located at the northern margin of the Bowen Basin in a region interpreted to represent a magmatic arc setting which is regarded as being prospective for porphyry copper-molybdenum deposits and epithermal gold-silver deposits.

Forte's exploration activity has established a geological framework for the project area which highlights strong similarities with the Mt Carlton district some 30 kilometres to the south. The Mt Carlton deposit, currently being mined by Evolution Mining, is a relatively recent discovery for the area.

Epithermal and porphyry-style mineralisation is present in the project area with a number of prospects already delineated with promising geochemical signatures. The proposed exploration program is aimed at acquiring an in-depth understanding of the lithological and structural controls on mineralisation.

### Board of Directors

Chairman  
Executive Director  
John Terpu

Non-Executive  
Director  
Kathleen Bozanic

Non-Executive  
Director  
Andrew Caruso

Company Secretary  
Mark Petricevic

### Contact Details

Registered Office and  
Postal Address  
Suite 4, 213 Balcatta Road  
BALCATT WA 6021  
Phone: 61 8 9240 4111  
Fax: 61 8 9240 4054  
Website:  
[forteconsolidated.com.au](http://forteconsolidated.com.au)

Share Registry  
Link Market Services Limited  
Level 12, QV1 Building  
250 St Georges Terrace  
Perth WA 6000

Telephone  
(within Australia): 1300 554 474  
(outside Australia): +61 1300 554 474  
Facsimile: +61 2 9287 0303

Email: [registrars@linkmarketservices.com.au](mailto:registrars@linkmarketservices.com.au)

If you wish to view your holdings online please login using the following link:  
<https://investorcentre.linkmarketservices.com.au/Login.aspx/Login>

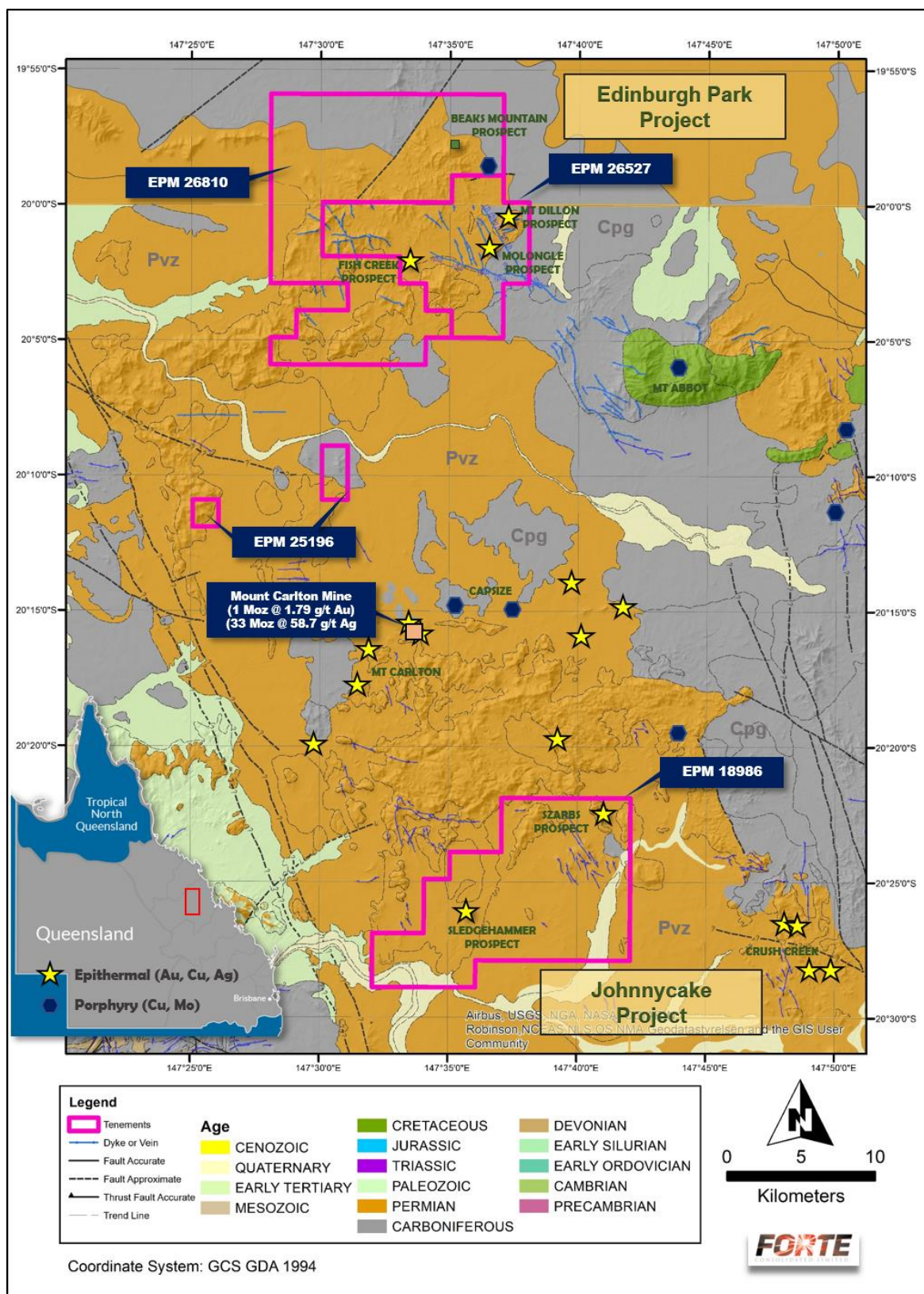


Figure 1: Location and geology of the Edinburgh Park Project, north Queensland

**Forte's Executive Director and Chairman, John Terpu, comment:**

*"The Edinburgh Park project is seen by the Company as an exciting growth area in the Company's portfolio. We believe the geology has all the right attributes to host a potential discovery of porphyry and/or epithermal mineralisation.*

*One of the attractive features of the project is the combination of good exposure to geology and the underexplored greenfield stage of the permit area with opportunities to make a discovery at the early reconnaissance stage. We have a number of delineated prospects to give the Company good initial exploration focus, but it is important that we view the exploration on the project area holistically, stepwise and using a first principals geology approach to ensure we can delineate further target areas and unlock the full potential of the project."*

**Company contact:**

John Terpu  
+61 (08) 9240 4111

**Competent Persons Statement**

The information in this report that relates to exploration results on EPM 26527 and EPM 26810 is based on information compiled by Dr Bryce Healy. Dr Healy is Head of Exploration with Forte Consolidated Ltd. He has sufficient experience relevant to the style of mineralisation and type of deposit under consideration. Dr Healy is a Member of the Australasian Institute of Geoscientists and as such, is a Competent Person for the Reporting of Exploration Results, Mineral Resources and Ore Reserves under the JORC Code (2012). Dr Healy consents to the inclusion in the report of the matters based on his information in the form and context in which they occur.

**Forward-Looking Statements**

Forward-looking statements are only predictions and are not guaranteed, and they are subject to known and unknown risks, uncertainties and assumptions, some of which are outside the control of Forte Consolidated Limited. Past performance is not necessarily a guide to future performance and no representation or warranty is made as to the likelihood of achievement or reasonableness of any forward-looking statements or other forecast. The occurrence of events in the future are subject to risks, uncertainties and other factors that may cause Forte Consolidated Limited's actual results, performance or achievements to differ from those referred to in this announcement. Given these uncertainties, recipients are cautioned not to place reliance on forward looking statements. Any forward-looking statements in this announcement speak only at the date of issue of this announcement. Subject to any continuing obligations under applicable law and the ASX Listing Rules, Forte Consolidated Limited, its directors, officers, employees and agents do not give any assurance or guarantee that the occurrence of the events referred to in this announcement will occur as contemplate.