

## US clinical trial results confirm positive impact of Mente Autism for children with autism spectrum disorder

- Study finds use of Mente Autism produces significant positive changes for children with autism spectrum disorder (ASD)... with an improvement towards normalisation
- Reduction in autistic behaviours as well as improved social and communication skills
- Changes in brain activity showed expected reduction in the frequency bands of interest
- Validates Mente Autism as a complementary home-based device for children with ASD
- Neurotech to complete preparations for FDA submission for Mente Autism
- Investor conference call details to follow

Perth, Australia & Malta – 9 July 2018 – Neurotech International Limited (ASX: NTI) (“Neurotech” or the “Company”), developer of quality medical solutions improving the lives of children with autism, is pleased to announce that the full results of the US clinical trial for its Mente Autism device has been published by leading medical journal *Frontiers in Neurology*.

The study, administered by Carrick Institute, was a randomised-controlled, double-blind investigation that compared Mente Autism with a control (or sham) device over a 12-week period. The trial was designed to ascertain the consequences of the Mente Autism neurofeedback treatment, with a variety of outcome measurements examined to assess the effectiveness of the device including analysis of brain activity, balance and behaviour. Evaluations were conducted at enrolment and again after the conclusion of the 12-week home-based therapy.

In summary, the results showed **significant positive changes, post therapy, in the Active group across all three areas assessed** (brain activity, balance and behaviour). Crucially, similar changes were not observed in the Control group.

Key highlights from the Active group are noted below:

- **Significant reductions in the brain wave frequency bands of interest, delta, beta and high beta**, which are typically abnormally high in children with autism;
- **Improved balance with eyes open rather than with their eyes closed**, which is the opposite effect experienced by autistic children;
- **Positive effects and a reduction of autistic behaviours**, across a number of questionnaires that are used globally as validated tools in clinical applications;
- **Parents indicating significant improvements in social skills and communication of their children**, with the Control group not reporting much change in these skills.

The study had attracted interest from over 700 potential subjects, with a total of 83 ultimately recruited after determining the required number of participants for study (n = 32) and allowing for a reasonable level of drop-outs. At its conclusion, a total of 34 participants (17 Active, 17 Control) completed the study, in excess of the required number. Importantly, while some subjects were

ultimately not included (for example, due to inability or unwillingness to return for the post trial evaluations), there were no drop outs due to problems of tolerance with the Mente device or treatment. The participants ranged from ages 5 to 17.

Given the limitations of traditional neurofeedback, including requiring considerable cost, time and effort from parents and their children to attend sessions in clinical environments, the outcomes of the study suggest Mente Autism is uniquely placed to target autism as a home-based neurofeedback tool.

Professor Frederick Carrick, lead author of the publication, noted, *“When we first designed the study, Mente Autism was of interest as it is a novel tool that takes clinical neurofeedback, an established non-invasive biofeedback approach for the treatment of autism, and makes this really accessible as a treatment option for parents of children with autism.*

*As we flagged along the way, we have been very excited that the study has yielded statistically significant results which show improvements across a wide range of functional areas in the Active group, and not in the Control group. All of these support the positive feedback and gratitude we have received from parents in the Active group, who have noticed improvements in communication and social skills in their child. This study has shown that Mente Autism has a real potential to be considered as a complementary therapy for autistic children.”*

The positive results of the US clinical trial will allow Neurotech to progress toward an FDA submission for Mente Autism, which is targeted for Q3 CY2018. Neurotech expects to market Mente Autism as a Class II regulated device in the US, supported by this clinical data. In parallel, manufacturing for the next batch of Mente devices is well underway, with the first devices expected to be ready by the end of July, and initial shipments recommencing in August.

Neurotech Chief Executive Officer Wolfgang Storf said: *“We’re very pleased with the outcomes delivered by this independent trial and subsequent publication by Frontiers.*

*To have the parents of the autistic children say their social interaction and communication has improved post therapy, and have this supported by the science, are key outcomes we have targeted with Mente Autism from day one.*

*These results give us a strong basis to move toward an FDA submission and progress sales programs of Mente Autism, which will be made available through our distributors.*

*More broadly, we hope that this will raise a real awareness about neurofeedback as one of the tools to help to parents of children with autism, that isn’t invasive and doesn’t involve drugs. Mente Autism takes this one step further, by not only allowing neurofeedback to be readily accessed at home, but also reducing the costs and strain on parents, children and health systems, in what can be particularly challenging situations.”*

The full clinical trial article, *“The Treatment of Autism Spectrum Disorder with Auditory Neurofeedback: A Randomized Placebo Controlled Trial Using the MENTE Autism Device”*, is available as an attachment to this announcement.

#### **INVESTOR CALL WITH PROFESSOR CARRICK & WOLFGANG STORF**

Neurotech is pleased to be able to invite Professor Carrick to an investor conference call, hosted by Neurotech CEO Wolfgang Storf. An ASX announcement with further details will be made imminently.

ends-

### **About Neurotech**

Neurotech International Limited is a medical device and solutions company incorporated in Australia and operating through its wholly-owned, Malta-based subsidiary AAT Research Limited. Neurotech's primary mission is to improve the lives of people with neurological conditions, with a vision of becoming the global leader in home-use and clinical neurotechnology solutions that are both accessible and affordable. Through flagship device Mente Autism and its associated platform, Neurotech is focused on the development and commercialisation of technological solutions for the diagnosis and treatment of such conditions, starting with autism.

Mente Autism is a clinical-quality EEG device that uses neurofeedback technology to help children with autism spectrum disorder. Designed for home use, it helps relax the minds of children on the spectrum which in turn helps them to focus better and engage positively with their environment.

For more information about Neurotech and Mente Autism please visit:

<http://www.neurotechinternational.com>.

<http://www.mentetech.com>.

Media enquiries:

Matthew Wright

[matt@nwrcommunications.com.au](mailto:matt@nwrcommunications.com.au)

Tel: +61 451 896 420



# The Treatment of Autism Spectrum Disorder With Auditory Neurofeedback: A Randomized Placebo Controlled Trial Using the Mente Autism Device

Frederick R. Carrick<sup>1,2,3\*</sup>, Guido Pagnacco<sup>4,5</sup>, Ahmed Hankir<sup>2,6,7</sup>, Mahera Abdulrahman<sup>8,9</sup>, Rashid Zaman<sup>2,10</sup>, Emily R. Kalambaheti<sup>11</sup>, Derek A. Barton<sup>1,11</sup>, Paul E. Link<sup>11</sup> and Elena Oggero<sup>4,5</sup>

<sup>1</sup> Neurology, Carrick Institute, Cape Canaveral, FL, United States, <sup>2</sup> Bedfordshire Centre for Mental Health Research in Association with University of Cambridge, Cambridge, United Kingdom, <sup>3</sup> Harvard Macy Institute and MGH Institute of Health Professions, Boston, MA, United States, <sup>4</sup> Bioengineering, Carrick Institute, Cape Canaveral, FL, United States, <sup>5</sup> Department of Electrical and Computer Engineering, University of Wyoming, Laramie, WY, United States, <sup>6</sup> Psychiatry, Carrick Institute, Cape Canaveral, FL, United States, <sup>7</sup> Leeds York Partnership NHS Foundation Trust, Leeds, United Kingdom, <sup>8</sup> Department of Medical Education, Dubai Health Authority, Dubai, United Arab Emirates, <sup>9</sup> Department of Primary Health Care, Dubai Medical College, Dubai, United Arab Emirates, <sup>10</sup> Psychiatry, University of Cambridge, Cambridge, United Kingdom, <sup>11</sup> Neurology, Plasticity Brain Center, Orlando, FL, United States

## OPEN ACCESS

### Edited by:

Andrea Guzzetta,  
Università degli Studi di Pisa, Italy

### Reviewed by:

Tomoki Arichi,  
King's College London,  
United Kingdom  
Sheffali Gulati,  
All India Institute of Medical Sciences,  
India

### \*Correspondence:

Frederick R. Carrick  
drfrcarrick@post.harvard.edu

### Specialty section:

This article was submitted to  
Pediatric Neurology,  
a section of the journal  
Frontiers in Neurology

**Received:** 19 February 2018

**Accepted:** 18 June 2018

**Published:** 05 July 2018

### Citation:

Carrick FR, Pagnacco G, Hankir A, Abdulrahman M, Zaman R, Kalambaheti ER, Barton DA, Link PE and Oggero E (2018) The Treatment of Autism Spectrum Disorder With Auditory Neurofeedback: A Randomized Placebo Controlled Trial Using the Mente Autism Device. *Front. Neurol.* 9:537. doi: 10.3389/fneur.2018.00537

**Introduction:** Children affected by autism spectrum disorder (ASD) often have impairment of social interaction and demonstrate difficulty with emotional communication, display of posture and facial expression, with recognized relationships between postural control mechanisms and cognitive functions. Beside standard biomedical interventions and psychopharmacological treatments, there is increasing interest in the use of alternative non-invasive treatments such as neurofeedback (NFB) that could potentially modulate brain activity resulting in behavioral modification.

**Methods:** Eighty-three ASD subjects were randomized to an Active group receiving NFB using the Mente device and a Control group using a Sham device. Both groups used the device each morning for 45 minutes over a 12 week home based trial without any other clinical interventions. Pre and Post standard ASD questionnaires, qEEG and posturography were used to measure the effectiveness of the treatment.

**Results:** Thirty-four subjects (17 Active and 17 Control) completed the study. Statistically and substantively significant changes were found in several outcome measures for subjects that received the treatment. Similar changes were not detected in the Control group.

**Conclusions:** Our results show that a short 12 week course of NFB using the Mente Autism device can lead to significant changes in brain activity (qEEG), sensorimotor behavior (posturography), and behavior (standardized questionnaires) in ASD children.

**Keywords:** autism spectrum disorder, neurofeedback, posturography, qeeg guided neurofeedback, binaural beats

## INTRODUCTION

Autism spectrum disorder (ASD) affects approximately 1% of children in the community and as a disorder with lifetime consequences, postponing its identification and intervention beyond infancy can be considered a precious loss of time (1). Autistic children demonstrate difficulty with emotional communication, display of posture and facial expression (2). They often have impairment of social interaction, demonstrating stereotypical patterns of behavior or interests as well as communication deficits that affect both verbal and nonverbal strategies (1, 3). This is complicated by restricted interests and repetitive patterns of behavior affecting their communicative skills, attention, empathy and social activities (4). Fortunately, biomedical interventions and psychopharmacological treatments of ASD are helpful, but unfortunately they may be associated with risks and side effects (5). As a consequence, many parents and their clinicians search for alternative methods of treatment. For instance, the treatment of childhood developmental disorders (CDD) commonly includes complementary and alternative medical (CAM) interventions such as nutritional supplementation, efforts to reduce environmental toxins and biofeedback (BFB). In addition to these treatments, neurofeedback (NFB), a noninvasive BFB approach shown to enhance neuroregulation and metabolic function in ASD is proving to be efficacious (4, 6). Porges' polyvagal theory is used to emphasize the need to integrate NFB with BFB, that in turn influence dynamic brain circuitry (7, 8). Such integration combining surface electroencephalography signals emerged in the 1970s (9) and has been successful in the treatment of a variety of psychiatric disorders of childhood (10) such that these noninvasive effective interventions have become very attractive in the treatment of ASD (11). The central outcome goal of these therapies is to modulate the activity of the brain to result in a behavioral modification. We desired to ascertain the consequences of a novel NFB in the treatment of ASD using the Mente Autism (AAT Medical, Malta) active portable NFB device composed of a headset, software and a cloud component. The Mente device is novel and unique and motivated us to conduct a clinical trial to test its effectiveness in the treatment of ASD as there are no published studies in this clinical area.

The Mente device is designed to utilize the EEG activity of children diagnosed with ASD to provide a home-based support therapy in order to promote relaxation as well as engagement of the subject. The device reads the EEG, augmented in a real-time NFB training in association with auditory therapy that is delivered through binaural beat sounds transmitted via earphones connected directly to the headband. The headband houses 4-EEG channels and a bias electrode system. The EEG signal is bipolar between the 2 EEG Sensors placed on the front of the head (Fp1 and Fp2), taken as active, and each of the 2 sensors placed at the back of the head (O1 and O2), taken as reference. The fifth sensor (FPz, placed between Fp1 and Fp2) is used as bias to minimize the DC and common-mode AC signals. This system can be used as a stand-alone system, with all collected raw EEG data being stored and processed on the device, thus allowing for the user

to move around freely without any hindrance from added devices.

All the analyses are performed on the Mente device with the raw data from each channel (Fp1-O1, Fp1-O2, Fp2-O1, Fp2-O2) passed through two 121th order FIR filters (High pass: Fstop1 = 0.25 Hz, Fpass1 = 1.25 Hz; Low pass: Fpass2 = 40 Hz, Fstop2 = 42 Hz), then an automated Eye Blink correction (12) is applied to remove eye blink artifacts. Then the signal is averaged between all the channels with a Fast Fourier Transformation (FFT). The following bands are selected from the FFT: Delta (1–3 Hz), Theta (4–7 Hz), Alpha (8–13 Hz), Beta1 (14–19 Hz), Beta2 (20–35 Hz). The results are updated every second and an auditory feedback is delivered in the form of binaural auditory beats. The binaural beats produce a perceptual phenomenon that occurs when two tones of a slightly different frequency are presented separately to the left and right ears resulting in the listener perceiving a single tone that varies in amplitude at a frequency equal to the frequency difference between the two tones. The binaural beats delivered by Mente Autism are in the range of delta, theta and beta frequency and are selected accordingly to the user's predominant frequency. The NFB protocol delivered by the device aims to reduce the abnormal EEG pattern associated with ASD that is characterized by excessive power at low-frequency (delta and theta) and high-frequency (beta) bands, as well as reduced power in the middle-range frequency band (alpha). At the end of a treatment session, the data collected are sent to a secure cloud system where they are stored. Subjects in the Control group used a device identical to the Mente Autism device, but the binaural beats were randomly generated and not based on the EEG pattern recorded by the device.

We needed robust outcome measurements that could tell us if the Mente NFB device was effective. We have extensive clinical experience using Quantitative electroencephalography (qEEG), a non-invasive technique that allows a highly precise measurement of brain function and connectivity and decided to incorporate it in our investigation. Additionally, qEEG can identify patterns of brain activity by the amplitude of brain waves at various locations in the cerebral cortex (7) with neural conductivity abnormalities found at both the local and global levels in ASD (13). Moreover, it can distinguish children suffering from ASD from normal children and can be used as an instrument to evaluate the efficacy of an intervention or treatment (14). The electroencephalographic data of qEEG has been utilized in neurofeedback treatments of a variety of childhood psychiatric disorders (10) and was utilized in this investigation.

To ascertain the consequences of NFB in the treatment of ASD, in this study, the effect of a 12-week long NFB treatment plan using the Mente Autism device was investigated by comparing pre and post qEEG and posturography results in children affected by ASD. Standard questionnaires pre and post were also used to better evaluate the effect of the treatment.

## MATERIALS AND METHODS

This investigation was approved by our Institutional Review Board (approval #20160321001) and registered with

ClinicalTrials.gov maintained by the National Library of Medicine (NLM) at the National Institutes of Health (NIH) registration # NCT02773303. It was conducted according to the Declaration of Helsinki and for all the subjects in this investigation, the parents gave their written informed consent and the children gave their assent.

## Protocol

The study protocol included two evaluations, one (PRE) at enrollment and the second (POST) after the conclusion of a treatment period of 12 weeks of home-based NFB therapy. The evaluations consisted of qEEG, dynamic computerized posturography, and ASD questionnaires including the Autism Treatment Evaluation Checklist (ATEC), the Social Responsiveness Scale–Second Edition (SRS-2), the Behavior Rating Inventory of Executive Function (BRIEF), the Autism Behavior Checklist (ABC) and the Questions About Behavioral Function (QABF). Subjects were randomly assigned to two groups: Active (receiving the actual therapy) and Control (receiving a placebo/sham therapy).

## Subjects

A power and sample size calculation suggested that we needed a total of 32 subjects with 16 subjects assigned to each of the two groups to maintain an  $\alpha < 0.05$  with 80% power. Our experience as a tertiary brain center has demonstrated that there often is difficulty for patients to return for testing after 3 months, especially if a treatment was considered to be successful. We had no incentive for the subjects in this study to return for outcome testing. We expected that we might lose a large percent of our sample size and decided to randomize 84 subjects to two groups of 42 (Active and Control) in order to plan for study dropouts and obtain the desired number of subjects. Subjects were recruited by placing notices of the study on social media Autism sites.

## Inclusion-Exclusion Criteria

Subjects were enrolled in the study if they were 2–18 years of age and had received a previously documented diagnosis of ASD and a targeted neural profile (high delta/high theta and/or high beta) associated with autistic disorders was confirmed by qEEG evaluation. Furthermore, since the therapy was going to be administered via a device requiring to be connected to a computer, the availability of an Internet connection was necessary for all subjects. Moreover, since the study testing was done in our clinic in Orlando FL, the parents of accepted subjects agreed that they would be responsible to come to the clinic at the beginning of the study and after 12 weeks of home based therapy and that they would bear the expenses associated with the visits. Subjects were excluded if they had a history of hearing impairment and co-morbidities such as Rett-Syndrome. No healthy controls were included in this research.

## Treatment Device

The NFB protocol delivered by the Mente Autism device aims to reduce the abnormal EEG pattern associated with ASD that is characterized by excessive power at low frequency and high-frequency bands, as well as reduced power in the middle-range

frequency band. As previously mentioned, Mente Autism utilizes an auditory feedback in the form of binaural auditory beats. The binaural beats produce a perceptual phenomenon that occurs when two tones of a slightly different frequency are presented separately to the left and right ears resulting in the listener perceiving a single tone that varies in amplitude at a frequency equal to the frequency difference between the two tones (15). The binaural beats delivered by Mente Autism are in the range of delta, theta and beta frequency and are selected accordingly to the user's brain pattern (amount and distribution of brain waves). Changes in the sound volume are controlled by specialized algorithms and the user receives an instant feedback through the earphones. The Mente Autism system presents a mixture of warble tones and binaural beats using a set of generative rules from derived brain activity levels, in order to present multiple frequencies that are hypothesized to alter and help the brain work in more desirable patterns. The protocol aims to promote a self-regulation of the brain activity including also the reduction of the faster high beta waves mostly associated with anxiety and over arousal. Subjects in the Control group used a device identical to the Mente Autism device, but the binaural beats were randomly generated and not based on the EEG pattern recorded by the device. An iPad running current OS and smart card Internet access was provided to all subjects at no cost, although they were advised that they could use their own devices, smart phones and tablets if they desired.

## Outcome Data Acquisition and Analysis

### qEEG

qEEG is produced through statistical analysis of the EEG, i.e., conversion of the time domain EEG record (voltage plotted against time) to the frequency domain (amplitude or power plotted against frequency) using the fast Fourier transformation (FFT) (16). The qEEG bands we considered are delta (1.5–3.5 Hz), theta (3.5–7.5 Hz), alpha (7.5–12.5 Hz), beta (12.5–30 Hz), and gamma (30–70 Hz) (17). Subject classifications are based on multivariate analysis of linear combinations of qEEG measures (discriminant functions, or “discriminants”), an approach called “neurometric” analysis (18, 19). In this study, raw EEG data were collected non-invasively from the participant's scalp at the time of the PRE and POST evaluation using a BrainMaster Discovery 20 channel EEG (BrainMaster Technologies; Bedford, Ohio). Electrode caps were used to place recording electrodes over the 19 standard regions defined by the International 10/20 system referenced to linked ears: Fp1, Fp2, F3, F4, F7, F8, T3, T4, C3, C4, P3, P4, T5, T6, O1, O2, Fz, Cz, and Pz. The electrode impedance levels were kept below 5,000  $\Omega$ . All channels of EEG were acquired with 24 bits resolution at the sampling rate of 256 Hz. The EEG was recorded for 5 min while the subject rested with eyes closed. Prior to the quantification analysis, all EEG signals were examined to remove epochs containing artifacts, such as EEG segments contaminated by horizontal and lateral eye-movement, muscle activity and electrocardiac artifact. Successive EEG quantification was restricted to those children from whom a minimum of 1 min of artifact-free EEG could be obtained. The NeuroGuide EEG and qEEG analysis system software (Applied Neuroscience, Inc.,

Largo, FL) was used for the signal processing of the qEEG. Each qEEG measure was calculated with the respect to the mean and standard deviation of that measure obtained from an age-regressed normal database using a Z or standard score. The normative database from Neuroguide provided an evaluation of whether the subject's qEEG deviated from the normative sample (20). From the qEEG, we considered the absolute power transformed into z-scores obtained by the power spectrum of each EEG channel. Multiple ANCOVAs were conducted with treatment as between subject factor, post-scores as dependent variables and pre-tests scores as covariate. Paired *t*-test were also conducted within the Active and Control groups respectively. Statistical analysis of qEEG measurements were performed using IBM SPSS Statistics release 20.0.0 (IBM Corporation, Armonk, NY, U.S.A.) Normal distribution of the data was assessed using the Kolmogorov-Smirnov (with the Lilliefors Significance Correction) and the Shapiro-Wilk tests before further proceeding with the analysis. Paired *t*-tests were applied for exploring the differences between pre- and post-test scores with regard to absolute z-scores in group and for each frequency band and the effect size was calculated as Cohen's *d* (21) (0.2 is considered to represent a small effect size, 0.5 represents a medium effect size and 0.8 a large effect size).

### Posturography

The ability of a subject to maintain equilibrium was assessed using standard posturography testing in four different conditions [known as the modified Clinical Test of Sensory Integration in Balance or mCTSIB protocol (22)]: standing on a hard surface with eyes open or closed and on a compliant surface (a 0.1 m thick foam cushion) again with eyes open or closed. We used the CAPS Professional system (Vestibular Technologies, LLC – Cheyenne WY- USA), a commercially available posturography medical device registered with the FDA and proven (23) to exceed the metrological characteristics for clinical posturography recommended by the International Society for Posture and Gait Research (24). Subjects were instructed to stand upright in a comfortable position, with their arms held loosely and naturally to their sides. No restrictions were imposed on the position of the feet and subjects were instructed to stand within the boundaries of the mostly triangular area of support of the force platform (~ 0.75 m × 0.85 m) and of the foam cushion (~ 0.6 m × 0.38 m) allowing subjects to use their preferred and natural stance. Center of Pressure (CoP) coordinates were acquired at 64 Hz for 20 seconds and then upsampled to 1 kHz before any analysis was performed. No filtering besides the anti-aliasing filtering in the device was applied to the data. The 95% confidence mediolateral sway (95% Conf MLsway), the 95% confidence antero-posterior sway (95% Conf AP Sway), the 95% confidence maximum sway (95% Conf Max Sway, the largest sway in any direction), the average sway velocity (Average Sway Vel, calculated as the sway path length (how much the CoP moved during the test) divided by the duration of the test or Average Sway Vel), and the 95% confidence ellipse area (95% Conf Ellipse Area), were considered. For each subject, the different sway measurements and the average sway velocity were normalized by the subject's height, and the 95% confidence ellipse area

was normalized by the square of the subject's height to remove any subject's gender and height dependency (25). The statistical analysis of the data was performed using IBM SPSS Statistics release 20.0.0 (IBM Corporation, Armonk, NY, U.S.A.). The normality of the distribution of the data was confirmed using the Kolmogorov-Smirnov (with the Lilliefors Significance Correction) and the Shapiro-Wilk tests. Since the posturography results consisted of 5 variables per test condition, rather than performing individual *t*-test comparison, the differences in the PRE and POST assessments between Active and Control groups were examined using General Linear Model (GLM) analysis, whereas the differences PRE-POST in the Active and Control groups were investigated using repeated measures GLM analysis.

### Questionnaires

Five commonly available and validated questionnaires were used pre and post treatment to determine the status of the participants: *The Autism Treatment Evaluation Checklist (ATEC)* (26), *The Social Responsiveness Scale-Second Edition (SRS-2)* (27), *The Behavior Rating Inventory of Executive Function (BRIEF)* (28), *The Autism Behavior Checklist (ABC)* (29), *Questions About Behavioral Function (QABF)* (30)

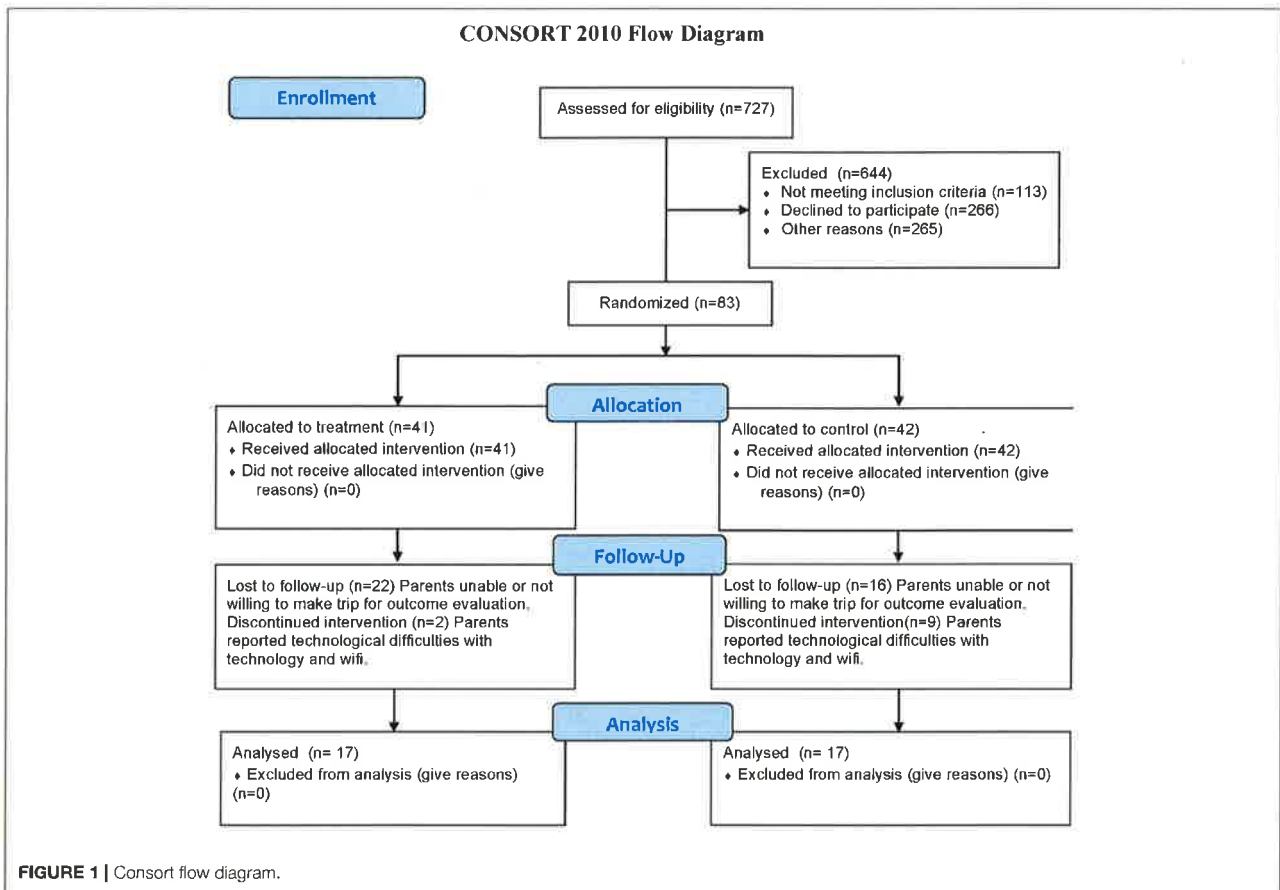
## RESULTS

727 subjects expressed interest in the study and were assessed for eligibility and 644 were excluded (113 did not meet the inclusion criteria, 266 declined to participate and 265 were not chosen in the randomization procedure). 84 subjects were randomized into two groups but one subject did not show for the PRE examination resulting in 83 subjects randomized into Active (41) and Control (42) groups. All randomized subjects received the intervention for their group with the Active group receiving a real Mente Autism device and the Control group receiving a sham/placebo Mente Autism device. Of the 83 subjects that completed the evaluation at the enrollment time, 34 returned for the POST evaluation after the 12 weeks of home based therapy. The dropout reasons were inability or unwillingness to come back for the POST (22 in the Active group and 16 in the Control group), or discontinued treatment because of problems associated with internet connections and technology challenges (2 in the Active group and 9 in the Control group). No subjects dropped out because of problems of tolerance with the Mente device or treatment. Furthermore, some subjects could not complete some of the testing resulting in a different number of subjects included in the different analysis. Some children could not tolerate the placement of an EEG Cap while others could not stand still for 20 seconds of posturography testing.

**Figure 1** shows the Consort Flow Diagram.

**Table 1** shows the demographic information for the Active group, the Control group and combined for all the subjects that completed the protocol and that were then included in the various analyzes. 34 participants completed all the assessments pre and post treatment. Because of artifacts from movement and problems with tolerating the EEG cap, 10 subjects were removed from the qEEG analysis. Therefore, from the entire sample, 24





participants were included in the successive qEEG analysis with their age expressed in months. A Body Mass Index (BMI) is also included in the table. No gender discrimination was included in the demographics of the posturographic data as once they are normalized there is no gender dependency (25).

The BRIEF includes an “Inconsistency scale” that evaluates individual scores in order to monitor the response rate as a score equal or higher than 7 representing an indication of a high degree of inconsistency in the responses. We identified 5 subjects who demonstrated significant scores on the Inconsistency scale promoting a further analysis excluding these subjects. This new sample was composed of 29 subjects (and their demographics is indicated separately in **Table 1**). Furthermore, since they are the most complete, the demographics of the posturographic analysis were also used to determine if there were any statistically significant differences among the two groups by calculating the *t*-tests between the Active and Control groups for each demographic variable. The resulting *p*-values are also shown, indicating that no differences were present among the two groups pre-treatment.

## qEEG

Thirty-four participants completed the pre and post treatment qEEG testing. As stated before, because of artifact from

movement and problems with tolerating the EEG cap, 10 subjects were removed from the analysis. There was some asymmetry in the qEEG results but this was not statistically significant. Three frequency bands demonstrated statistically significant changes pre and post treatment: delta (1-4 Hz), beta (12-25 Hz) and high beta (25-30 Hz). Our analysis reporting is specific for these areas and also focused on three main region of interest (ROIs): Frontal (Fp1, Fp2, F3, F4, F7, F8, Fz), Central (T3, T4, C3, C4, Cz), and Posterior (P3, P4, Pz, T5, T6, O1, O2,) that were chosen a priori for each frequency band to evaluate qEEG changes. The results are reported numerically in **Table 2** and in graphical format in **Figures 2-4**.

Topographical statistical distribution of the outcomes after 12 weeks period of treatment in eyes closed condition assessed by comparing the Pre- and Post- qEEG separately for the Delta, Beta and High Beta bands, in the Active (left side) and the Control (right side) group respectively. Values are expressed in term of absolute Z scores and *p* values of the paired *t*-tests. With the reference to the *t* values the lower the values, the stronger the reductions of the abnormal Z scores values in the Post- over the Pre- qEEG assessment. Pre minus Post qEEG by Frequency Band demonstrates topographical statistical distribution of the outcomes after 12 weeks period of treatment



**TABLE 1 |** Demographics of the subjects participating in the study and that were included in the various analysis.

Analysis	Demographics at enrollment					
	Group	# of subjects	Gender	Median age [year]	Age range [years]	
qEEG	Control	12	10 males 2 female Total	8 13 8.5	5–15 11–15 5–15	
	Active	12	11 males 1 female Total	12 5 11.5	6–17 5–5 5–17	
	Combined	24	21 males 3 females Total	9 11 10	5–17 5–15 5–17	
Posturography	Group	# of subjects	Age [months]	Height [m]	Mass [kg]	BMI [kg/m <sup>2</sup> ]
	Control	17	115.5 (9.4)	1.41 (0.05)	40.7 (4.5)	19.28 (0.99)
	Active	17	117.9 (10.0)	1.37 (0.04)	34.7 (3.5)	17.32 (0.81)
	p-value	—	0.858	0.509	0.251	0.133
Combined	34	116.7 (6.8)	1.39 (0.03)	37.4 (2.9)	18.30 (0.64)	
Average value (Standard Error of the Mean) for the different parameters T-tests between the active and control groups calculated to determine if there were any statistically significant differences among the two groups						
ATEC SRS-2 ABC QABF Questionnaires	Group	# of subjects	Gender	Median age [year]	Age range [years]	
	Control	17	13 males 4 females Total	7 11 5 8	4–15 11–15 4–15	
	Active	17	15 males 2 females Total	11 11 11	6–16 5–17 5–17	
Combined	34	28 males 6 females Total	8 11 5 9.5	4–16 5–17 4–17		
BRIEF Questionnaire (after excluding subjects with high Inconsistency scale)	Group	# of subjects	Gender	Median age [year]	Age range [years]	
	Control	13	12 males 1 female Total	7 15 7	4–15 15–15 4–15	
	Active	16	14 males 2 females Total	11 11 11	6–16 5–17 5–17	
Combined	29	26 males 3 females Total	8 15 8	4–16 5–17 4–17		

The different number of subjects in the qEEG analysis is due to the exclusion of some subjects due to artifacts in the EEG recordings. The different number of subjects in the BRIEF analysis is due to the removal of the subject with high inconsistency value.

in eyes closed condition assessed by comparing the Pre- and Post- qEEG separately for the Delta, Beta and High Beta bands. With the reference to the values on the respective color-coded bar the red indicates larger values on PRE and blue larger values on POST phase. With the reference to the absolute difference values on the respective color-coded bar the red indicates that the color is Red is higher and Blue is lower.

Pairwise comparisons within the groups (Active and Control), carried out for each band of frequency (Delta, Beta, High Beta), showed statistically significant results only in the Active group between pre and post scores. Overall changes represented an improvement toward normalization, i.e. a reduction of the abnormal values in the z-scores. In particular, the paired-samples *t*-test indicated that absolute z-scores were significantly lower (in bold in **Table 2**) in the post- versus pre-qEEG for the Active group in the Delta Frontal, Delta Central, Beta Central, and High Beta Frontal. Box plots comparing the statistically and substantively significant /Pre and Post results for the Delta, Beta and High Beta bands for the Active and Control groups are reported in **Figures 3, 4**.

## Posturography

No significant differences in the PRE and POST assessments between Active and Control groups nor in the Active and Control

groups PRE-POST were found in the multivariate GLM analyzes. **Table 3** contains for each of the considered posturography variables the average and standard error of the mean for each group pre and post treatment. The table shows horizontally the differences between Active and Control groups in the PRE and POST evaluations, and vertically the differences PRE-POST for the two groups separately. The results of the GLM analysis are also shown as the *p* value between groups pre and post and for each group pre-post. When the *p* value was significant ( $p < 0.05$ ), the partial  $\eta^2$  (an estimation of the effect size: 0.02 ~ small; 0.13 ~ medium; 0.26 ~ large) and the observed power (the probability of correctly rejecting the null hypothesis) are also reported.

For each subject, the different sway measurements and the average sway velocity were normalized by the subject's height, and the 95% confidence ellipse area was normalized by the square of the subject's height to remove any subject's gender and height dependency. When the *p* value was significant ( $p < 0.05$ ), the partial  $\eta^2$  (an estimation of the effect size: 0.02 ~ small; 0.13 ~ medium; 0.26 ~ large) and the observed power (the probability of correctly rejecting the null hypothesis) are also reported.

As an example **Figure 5** shows for the hard surface eyes open test condition, the CoP trace pre and post treatment for a subject in the Active group (with a statistically significant decrease) and

**TABLE 2** | Numerical results of the statistical analysis performed on the qEEG Delta, Beta and High Beta bands.

Variable			Frontal			Central			Posterior		
			Control	Active	p-value*	Control	Active	p-value*	Control	Active	p-value*
Delta (1–4 Hz)	Pre	Mean (Std.Error)	1.325 (0.374)	1.977 (0.167)	0.126	1.119 (0.412)	1.511 (0.215)	0.408	0.474 (0.281)	0.420 (0.273)	0.273
	Post	Mean (Std.Error)	1.301 (0.363)	1.089 (0.287)		1.061 (0.403)	0.892 (0.377)		0.855 (0.190)	0.480 (0.285)	
		p-value** Partial	0.947	<b>0.003</b>		0.863	<b>0.040</b>		0.825	0.098	
		$\eta^2$ Obs.-power		<b>0.555</b> <b>0.920</b>			<b>0.329</b> <b>0.563</b>				
Beta (12–25 Hz)	Pre	Mean (Std.Error)	0.520 (0.328)	0.874 (0.304)	0.438	0.201 (0.264)	0.743 (0.311)	0.197	0.367 (0.302)	0.786 (0.319)	0.351
	Post	Mean (Std.Error)	0.313 (0.214)	0.587 (0.308)		0.415 (0.185)	0.445 (0.251)		0.526 (0.237)	0.712 (0.265)	
		p-value** Partial	0.575	0.199		0.318	<b>0.031</b>		0.344	0.651	
		$\eta^2$ Obs.-power					<b>0.358</b> <b>0.617</b>				
High Beta (25–30 Hz)	Pre	Mean (Std.Error)	1.369 (0.355)	1.656 (0.431)	0.613	1.115 (0.267)	1.485 (0.414)	0.461	1.499 (0.308)	1.485 (0.388)	0.979
	Post	Mean (Std.Error)	1.088 (0.222)	1.107 (0.358)		1.352 (0.270)	1.159 (0.338)		1.348 (0.319)	1.549 (0.381)	
		p-value** Partial	0.431	<b>0.024</b>		0.342	0.146		0.621	0.810	
		$\eta^2$ Obs.-power		<b>0.382</b> <b>0.662</b>							

When the p-value was significant ( $p < 0.05$ ), the partial  $\eta^2$  (an estimation of the effect size: 0.02~small; 0.13~medium; 0.26~large) and the observed power (the probability of correctly rejecting the null hypothesis) are also reported.

\*Assuming equal variances.

\*\*Paired differences.

In bold the results that are statistically significant.

for one in the Control group (with an increase in whole body sway post placebo treatment).

## Questionnaires

34 subjects (28 males and 6 females), completed the questionnaires at the beginning of the study and at their final outcome visit. We tested for differences in gender and only found differences between boys and girls at their starting point with reference to the Brief (Organizational Materials Subscale), ATEC (Speech) and SRS (2-Awareness). The T-scores obtained were adjusted for age and sex allowing us to combine all subjects independent of gender for our analysis. All the t values that are positive indicate an improvement in symptoms or dysfunctional areas according to the T-scores provided by each questionnaire standardization with the exception of the ATEC that has negative values indicating a worsening of symptoms. We included a Global Executive Composite (GEC), representing a summary score that incorporated all of the BRIEF clinical scales. Paired t-tests were calculated to explore the differences between pre- and post-test scores within the groups (Active and C), with regard to: standardized T-scores and for BRIEF-2, SRS-2, ABC (ASIEP-3): raw scores for QABF and ATEC. For each paired t-tests, an effect size was calculated as Cohen's d (21). The results of this statistical analysis are reported in **Table 4** and the box plots for only the statistically significant results are reported in **Figures 6, 7**.

## The Autism Treatment Evaluation Checklist (ATEC)

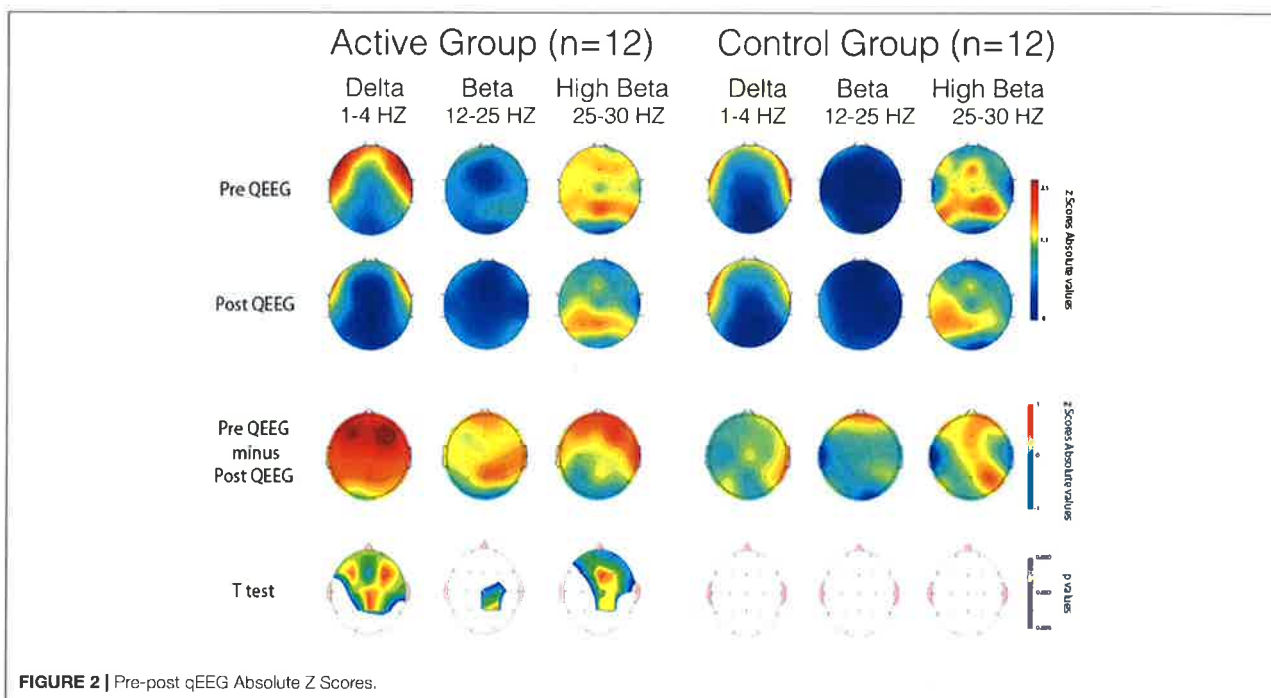
Statistically significant results were found in both groups but with different directions of the effects for the single scales: For the Active group, the behavior worsened for the Speech and the Sensory/Cognitive Awareness whereas the Sociability improved. For the Control group, only the Health/Physical Behavior showed a statistically significant improvement. No statistically significant results were found with the reference to the Total score.

## The Social Responsiveness Scale—Second Edition (SRS-2)

As mentioned previously, T-scores were transformed from the raw individual scores thus allowing a comparison for age and gender. No statistically significant results were found with the reference to each clinical scale as well as the two composite indexes, RRB and SCI for either the Active or Control groups.

## The Behavior Rating Inventory of Executive Function (BRIEF)

T-scores were transformed from the raw individual scores thus allowing the comparison for age and gender. Among significant results, the direction of the effects pointed toward an improvement of executive function where high T scores indicated clinically relevant observations with the reference to each functional area as described by the individual subscales. When all the subjects are considered, The Active group shows



**FIGURE 2 |** Pre-post qEEG Absolute Z Scores.

significant differences between pre and post only in the Shift subscale whereas the Control group shows significant differences between pre and post in the Shift, Plan/Organize, Metacognition Index and in the Global Executive Composite. When the subjects with high inconsistency are excluded from the analysis (Table 4), then only the Active group show significant differences pre and post, in particular in the Shift, Initiate, Organizational of Materials, Behavioral Regulation Index, Metacognition Index, and in the Global Executive Composite.

#### The Autism Behavior Checklist (ABC)

Only the Active group had statistically significant differences between pre and post scores and the direction of the effect was toward a reduction of the autistic behaviors.

#### Questions About Behavioral Function (QABF)

Only the Active group had statistically significant differences between pre and post scores for the Escape, the Nonsocial Reinforcement and the total score. The direction of the effect was toward a reduction of problematic behaviors.

#### Qualitative Reporting

Parents of subjects in the Active group of this investigation reported significant improvements in communication and social skills of their children while the parents of subjects in the Control group did not report much change in these skills.

## DISCUSSION

The Mente device represents a novel approach in a NFB approach to ASD treatment. There are no other comparisons

represented in the literature. As shown in Table 1 (demographics for the posturography analysis) and in Tables 2–4 for the PRE evaluation using the qEEG, posturography and questionnaires, no significant differences were found between the Active and the Control groups with the exception of the Social Awareness score of the SRS-2 questionnaire, the Speech / Language Communication of the ATEC and the Organization of Materials of the BRIEF (in bold in Table 4), so whatever difference were found between PRE and POST treatment evaluations was most likely due to the treatment itself, rather than the subjects. We realized that qEEG is an essential tool for the evaluation and treatment of neurophysiologic disorders (31) but had major difficulties with many of our subjects not tolerating the EEG cap on their heads or having behavioral issues that prevented the acquisition of EEG without artifact and as we discussed previously, 24 subjects could be included in the qEEG analysis (Table 1). In spite of these difficulties, our main findings represent statistically significant improvements of Delta, Beta and High Beta Frequencies in the Active group after a 12 weeks NFB home treatment with the Mente device.

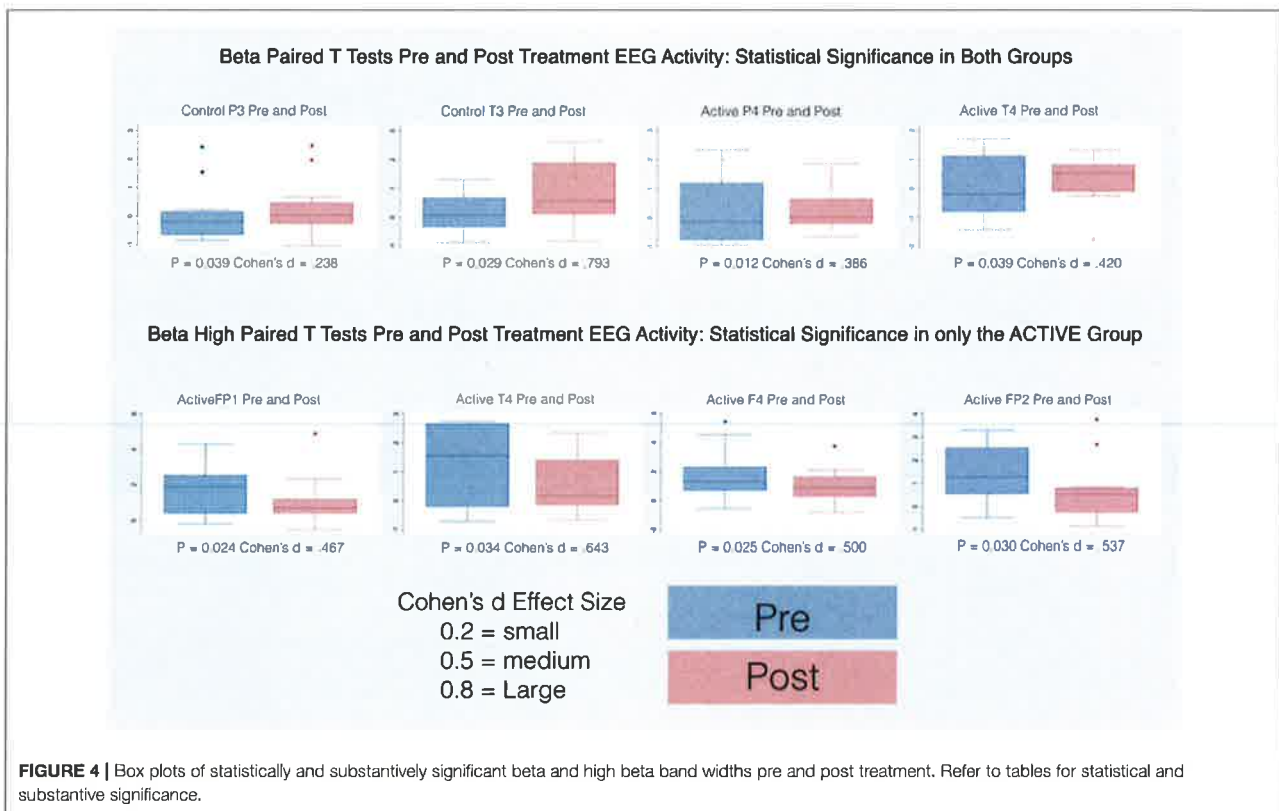
The various frequency bands of the EEG represent power spectra that are regulated by anatomically homeostatic systems mediated by cortical, thalamic and brainstem processes (32). Changes in the power spectra of the EEG as observed in this investigation reflect a statistically significant change in brain function of the active treatment group as a consequence of the intervention. Studies using qEEG in ASD have shown that there is significant lower spectrogram criteria values in left brain hemisphere at F3 and T3 electrodes and at FP1, F7, C3, Cz and T5 electrodes (33). We observed similar criteria values in the active treatment group with subsequent improvement after treatment.



We have documented non significant brain symmetry differences in all of our subjects (Active and Control) before treatment with subsequent changes after treatment. Abnormal functional brain lateralization has been reported before in EEG recordings of ASD subjects (34). Low EEG frequencies tend to decrease with age from childhood to adulthood while high frequencies increase (35). We observed changes in the qEEG frequencies with noted decreases of low EEG frequencies and increases of high frequencies in our Active group after treatment signifying a trend toward normality. For the most part we did not find statistically significant changes in our Control group after treatment but did find a statistically significant improvement only in the Beta band P3 and T3 leads.

Sensory-based interventions (SBIs) are associated with an improved performance in daily life activities and occupations of people with ASD (36) and although the sham treatment did not affect significant change in general, it does appear that the sham sound had a minor consequence in brain activity. Sensory stimulation such as sound may be modified by environmental factors in the development of an individual whose brain interacts with the environment with resultant modification of neural circuitry (37). An assessment of Cochrane systematic reviews found that music therapy is associated with evidence of benefits

for patients with autism spectrum disorders, although the evidence is low quality with a need for high quality long term clinical trials (38). The presentation of binaural auditory beats can affect psychomotor performance and mood, comprising a dual complex system including spectral complexities that are effective for ASD children (15). The binaural beats associated with the NFB of the Active Mente device are associated with the differences between the Active and Control groups. Spectral complexity is present due to different frequencies being sent back to the user in the Active group's NFB loop, resulting in the generation of EEG data frequencies. Binaural beats originate in the superior olivary nucleus as a new auditory stimulation produced by listening to different frequencies of sound at each ear (39). Our investigation demonstrated significant changes in the qEEG of various brain areas and no significant changes in others. The cortical processing evoked by binaural beats is similar in distribution to other acoustic beats that are located mostly to left temporal lobe areas (40). However, multisensory temporal integration in ASD is associated with a wider temporal binding window suggesting that general sound stimulation may bind with other sensory modalities such as proprioception of the head band resulting in an improvement in postural stability (41).



Considering the posturography results (Table 3 and Figure 5) some of the changes recorded between PRE and POST were very small (such as in the case of the 95% Conf. ML sway for the Control group in the hard surface eyes open and closed tests and of the 95% Conf. Max Sway again for the Control group in the eyes open on hard or compliant surface tests) and might have been gone undetected if the instrument used to record the posturography data were not sensitive enough. Looking at the results in general, we found a decrease in whole body sway in both the Active and Control groups but only the Active group demonstrated statistically significant decreases in sway after treatment. The proprioceptive effect of the headband itself might contribute to central changes independent of sound and should be investigated. Although each posturography test lasted 20 seconds, as shown in Table 1, only 34 of the enrolled subjects had a full set of posturography evaluations pre and post treatment and were included in the analysis. This was mainly due to the difficulty in keeping the child in position for the entire duration of the test and obtaining meaningful data without excessive movements or the subject stepping out of position, or opening the eyes. Some subjects were even jumping up and down on the CAPS force platform, but fortunately this type of abuse did not injure the children nor damage the instrument, because of a designed maximum load of 1,000 kg. Also the larger area of support allowed subjects to assume their preferred stance without any restrictions. It would be expected that the more difficult the

test, the higher the sway would be. However, this was not always the case: for example the 95% Conf ML sway in the hard surface eyes open results were actually worse than the corresponding compliant surface eyes closed results pre treatment for the Active group (85.2 mm/m pre vs. 79.1 mm/m post) or the 95% conf ellipse area in the hard surface eyes open results were also worse than the corresponding compliant surface eyes open results pre treatment for the Control group (5450 mm<sup>2</sup>/m<sup>2</sup> vs. 3722.2 mm<sup>2</sup>/m<sup>2</sup>).

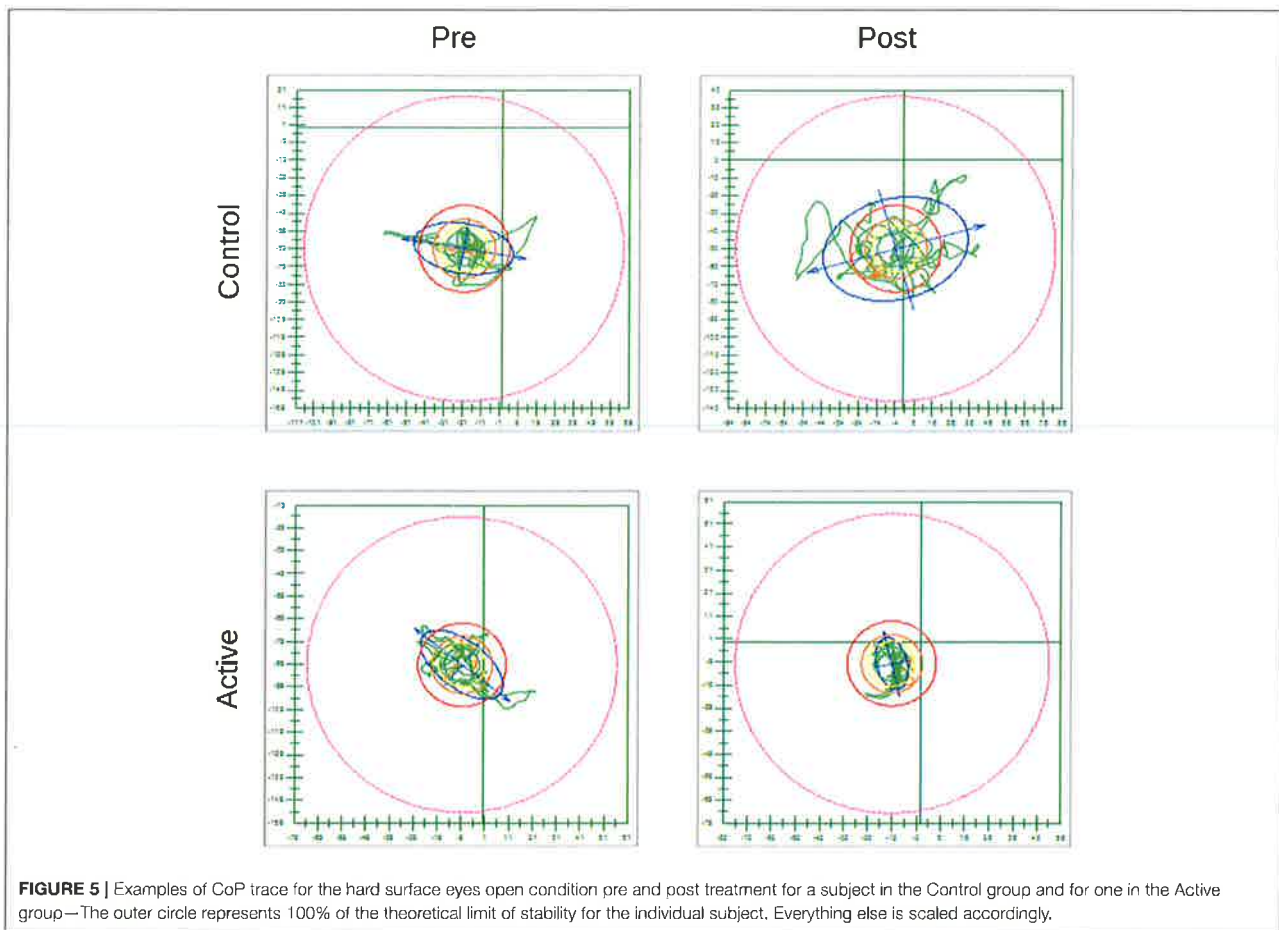
It is expected that people are able to stand better when they can see their environment and these findings in our ASD subjects are alarming. ASD individuals experience the world around them uniquely by using different visual strategies to process social information (42). Clearly, the comparison of the performance of vision strategies and eye movements and gaze following in social settings is quantitatively different in children with developmental delays compared to children without delays (43). Obviously, the role of the eyes in gaze holding plays a central role in social cognition that is impaired in ASD children, suggesting a deficiency in the spatiotemporal networks of the brain (44). The worsening of stability and sway with the eyes open in our subjects may be identified as a biomarker for ASD. Even the targets that a child looks at before maintaining gaze are different in ASD than typically developing children who look at the eyes and mouth of an individual much more than an autistic child (45). A recent meta-analysis suggests that decreased eye fixation

TABLE 3 | Numerical results of the univariate GLM statistical analysis performed on the posturography data.

Variable	95% Conf ML sway [mm/m]		95% Conf AP sway [mm/m]		95% Conf max sway [mm/m]		Average sway Vel [mm/s/m]		95% Conf ellipse Area [mm <sup>2</sup> /m <sup>2</sup> ]					
	Control	Active	Control	Active	Control	Active	Control	Active	Control	Active				
mCTSIB	Pre	Mean (Std.Error)	60.6 (11.6)	71.4 (13.0)	63.7 (12.8)	74.2 (15.2)	74.2 (14.4)	89.6 (17.4)	76.6 (18.3)	65.4 (13.2)	5037.4 (1788.9)	7004.0 (2401.1)	0.624	0.516
	Post	Mean (Std.Error)	53.9 (7.9)	48.7 (10.1)	51.4 (7.9)	47.4 (8.8)	64.1 (9.9)	57.9 (11.3)	53.0 (8.8)	46.3 (9.2)	3030.6 (920.8)	2804.6 (1000.1)	0.605	0.869
		<i>p</i> -value	Partial $\eta^2$	0.404	<b>0.024</b>	0.210	<b>0.049</b>	0.299	<b>0.035</b>	0.093	0.081	0.169	<b>0.050</b>	<b>0.219</b>
		Obs.-power	<b>0.281</b>	<b>0.652</b>	<b>0.220</b>	<b>0.515</b>	<b>0.248</b>	<b>0.579</b>				<b>0.219</b>	<b>0.511</b>	
Hard surface eyes open	Pre	Mean (Std.Error)	61.1 (17.1)	85.2 (22.0)	59.2 (13.7)	89.6 (25.1)	70.7 (17.6)	112.7 (28.6)	77.2 (19.4)	62.1 (18.2)	5450.3 (2383.4)	10,443.7 (4815.2)	0.575	0.360
	Post	Mean (Std.Error)	59.5 (12.3)	42.4 (12.4)	56.6 (41.4)	41.4 (13.4)	72.3 (13.7)	51.8 (14.6)	52.9 (11.0)	34.5 (8.6)	3782.0 (1272.2)	2218.2 (911.6)	0.196	0.325
		<i>p</i> -value	Partial $\eta^2$	0.919	<b>0.013</b>	0.851	<b>0.043</b>	0.906	0.135	<b>0.039</b>	<b>0.239</b>	0.471	0.077	
		Obs.-power	<b>0.330</b>	<b>0.750</b>	<b>0.232</b>	<b>0.542</b>	<b>0.316</b>	<b>0.724</b>				<b>0.239</b>	<b>0.559</b>	
Hard surface eyes close	Pre	Mean (Std.Error)	54.6 (13.5)	54.5 (14.5)	68.3 (19.1)	61.9 (14.5)	73.0 (19.2)	71.4 (16.2)	70.5 (25.1)	50.7 (13.5)	5725.9 (2526.4)	4680.2 (2437.0)	0.492	0.768
	Post	Mean (Std.Error)	51.4 (11.8)	44.3 (12.1)	46.5 (10.2)	47.0 (11.6)	59.0 (12.9)	57.2 (14.0)	51.4 (14.5)	48.6 (14.1)	3025.7 (1149.6)	2917.8 (1213.2)	0.891	0.949
		<i>p</i> -value	Partial $\eta^2$	0.780	0.534	0.240	0.346	0.326	0.425	0.345	0.901	0.247	0.507	
		Obs.-power												
Compliant surface eyes open	Pre	Mean (Std.Error)	53.7 (10.0)	66.7 (14.9)	59.0 (13.4)	60.0 (11.8)	69.7 (14.0)	75.8 (16.1)	75.0 (20.1)	60.5 (11.5)	3722.2 (1467.0)	4804.0 (1854.9)	0.555	0.650
	Post	Mean (Std.Error)	56.6 (8.7)	45.5 (7.9)	51.3 (13.3)	43.0 (7.0)	67.9 (13.9)	51.4 (8.3)	55.6 (11.4)	41.7 (7.2)	3070.7 (1384.5)	2071.7 (550.8)	0.311	0.507
		<i>p</i> -value	Partial $\eta^2$	0.762	0.107	0.416	<b>0.046</b>	0.863	0.070	0.193	0.088	0.499	0.103	
		Obs.-power				<b>0.227</b>	<b>0.530</b>							
Compliant surface eyes closed	Pre	Mean (Std.Error)	72.9 (12.7)	79.1 (13.6)	68.4 (11.2)	86.1 (22.3)	83.4 (12.9)	98.4 (23.4)	83.7 (16.2)	88.4 (18.3)	5251.0 (1794.5)	8088.2 (3845.1)	0.849	0.509
	Post	Mean (Std.Error)	47.8 (6.2)	62.5 (12.2)	51.3 (6.2)	58.1 (9.4)	57.3 (6.9)	71.2 (12.4)	52.1 (7.1)	60.5 (14.0)	2243.9 (656.0)	4010.8 (1880.7)	0.596	0.382
		<i>p</i> -value	Partial $\eta^2$	0.026	0.113	0.096	0.213	<b>0.033</b>	0.220	<b>0.036</b>	0.111	0.072	0.290	
		Obs.-power	<b>0.273</b>	<b>0.634</b>			<b>0.253</b>	<b>0.589</b>						

95% Conf ML Sway = 95% confidence mediolateral sway, 95% Conf AP Sway = 95% confidence antero-posterior sway, 95% Conf Max Sway = the 95% confidence maximum sway (the largest sway in any direction), Average Sway Vel = average sway velocity (calculated as the sway path length (how much the CoP moved during the test) divided by the duration of the test), 95% Conf Ellipse Area = area of the 95% confidence ellipse. In bold the results that are statistically significant, their partial  $\eta^2$  and observed power in underlined italic the results that got worse after treatment. mCTSIB = all 4 posturography tests combined as repeated measures. In bold the results that are statistically significant. In underlined italic the results that are worse POST vs. PRE mCTSIB.





to the eye region of the face may represent a robust biomarker for ASD (46). Interestingly, there are differences in fixation time at eye regions between ASD children who tend to fixate on the right eye for a greater amount of time than the left eye compared to typically developing children that increase left eye fixation over right eye fixation when scanning the face (47). Individuals with autism have difficulty in following another person's gaze direction suggesting pathology linking the orbitofrontal cortex with the superior temporal sulcus and amygdala (48) confirmed by combining eye tracking and functional neuroimaging (49). In order to learn, infants must share joint attention with others and be able to follow their gaze toward goal objects (50), something that ASD children do poorly. Autistic children also have difficulty encoding features of another's face, gaze and facial movements while at the same time demonstrating an inability to imitate body actions (51). These measurable performances are found in concert with difficulties of executive function, memory and language abilities and social sensitivity with a lack of eye gaze alternation and socialization of ASD children compared to typically developing youths (52).

The increased ML sway probably represents a greater frequency of moving weight from one side to the other

representing an increase of fidgety movements in the Control group. When comparing pre and post treatment results, on average, with the exception (in red in **Table 2**) of the 95% Conf. ML sway for the Control group in the compliant surface eyes open test and the 95% Conf. Max sway for the Control group in the hard surface eyes open test, all average values improved (became smaller) for both the Active and the Control groups between pre and post treatment, indicating that even if not in synch with the EEG the sound stimulation had an effect (53). However, this effect was statistically significant only for the 95% confidence measures when the mCTSIB results were considered. Similar results were obtained when considering the hard surface eyes open test with the 95% confidence sway measures and the average sway velocity again all with statistically significant differences between pre and post for the Active group. For the Active group, no statistically significant differences were found for the other three tests comprising the mCTSIB, with the exception of the 95% Conf. AP Sway. For the Control group most variables across all tests decreased in value, but these changes were statistically significant for the 95% Conf. ML Sway, the 95% Conf. Max Sway and the average sway velocity of the PSEC test. This explains the changes in the Control group posturographic



**TABLE 4 |** Pre and Post: questionnaire mean and standard error with bold significant values (\*Assuming equal variances \*\*after excluding subjects with high Inconsistency scale).

SRS-2																		
Questionnaire	Social awareness			Social cognition			Social communication			Social motivation			SCI					
	Control	Active	p*	Control	Active	p*	Control	Active	p*	Control	Active	p*		Control	Active	p*		
Pre	Mean (Std.Err)	75.59 (2.585)	76.12 (2.588)	74.53 (1.851)	72.18 (2.530)	0.223	76.94 (2.200)	76.41 (2.971)	0.507	73.18 (2.686)	70.41 (2.244)	0.251	81.88 (2.488)	79.29 (2.533)	0.782	78.18 (1.879)	76.82 (2.149)	0.127
Post	Mean (Std.Err)	76.18 (1.399)	72.47 (2.017)	71.24 (1.917)	70.53 (2.330)		73.71 (2.774)	70.41 (2.244)		70.76 (2.256)	68.18 (2.403)		77.47 (3.131)	75.29 (2.533)		75.35 (1.788)	73.82 (2.459)	
	p-value Partial	0.846	0.206	0.144	0.525		0.072	0.161		0.182	0.352		0.079	0.174		0.106	0.166	
	$\eta^2$ Obs,P																	
ATEC																		
Questionnaire	ABC			Speech / Language communication			Sociability			Sensory / Cognitive awareness			Health / Physical behavior			Total		
	Control	Active	p*	Control	Active	p*	Control	Active	p*	Control	Active	p*	Control	Active	p*		Control	Active
Pre	Mean (Std.Err)	85.76 (350)	89.41 (3.239)	17.00 (1.683)	18.59 (1.787)	0.014	12.29 (1.686)	14.59 (1.665)	0.639	21.29 (1.233)	20.12 (1.981)	0.122	23.65 (3.280)	23.24 (2.289)	0.276	74.24 (4.96)	76.53 (3.68)	
Post	Mean (Std.Err)	85.12 (2.484)	80.59 (2.773)	18.95 (1.372)	19.65 (1.855)		11.00 (1.663)	10.59 (1.412)		22.88 (1.450)	22.59 (2.220)		19.76 (3.095)	19.88 (2.009)		72.00 (4.10)	72.65 (3.37)	
	p-value Partial	0.816	0.002	0.057	0.006		0.217	0.022		0.244	0.050		0.004	0.071		0.233	0.164	
	$\eta^2$ Obs,P	0.460	0.933	0.381	0.838		0.288	0.665		0.219	0.513		0.411	0.880				
QAFB																		
Questionnaire	Social attention			Escape			Tangible reinforcement			Physical discomfort			Nonsocial reinforcement			Total		
	Control	Active	p*	Control	Active	p*	Control	Active	p*	Control	Active	p*	Control	Active	p*		Control	Active
Pre	Mean (Std.Err)	5.00 (0.804)	2.82 (0.671)	7.82 (1.075)	9.24 (0.730)	0.094	8.29 (1.067)	9.24 (0.881)	0.128	5.94 (0.976)	6.65 (1.000)	0.309	8.47 (0.963)	9.94 (0.929)	0.245	35.53 (3.96)	40.88 (2.44)	
Post	Mean (Std.Err)	4.65 (0.747)	5.47 (0.697)	7.88 (0.652)	7.35 (0.727)		7.86 (0.861)	8.00 (1.085)		4.84 (0.656)	5.41 (0.936)		9.06 (0.972)	8.24 (0.851)		34.41 (2.59)	34.47 (2.98)	
	p-value Partial	0.455	0.543	0.946	0.003		0.563	0.106		0.329	0.268		0.507	0.035		0.708	0.043	
	$\eta^2$ Obs,P				0.424		0.896							0.249			0.232	
					0.886									0.580			0.542	

(Continued)

TABLE 4 | Continued

BRIEF**														
Questionnaire														
Variable	Inhibit		Shift		Emotional control		Behavioral regulation index		Initiate		Working memory			
Group	Control	Active	Control	Active	Control	Active	Control	Active	Control	Active	Control	Active	p*	
Pre	Mean (Std.Err)	64.54 (3.155)	68.88 (3.551)	71.94 (2.823)	66.38 (3.666)	64.25 (3.406)	60.46 (3.854)	65.54 (3.762)	70.75 (3.241)	64.08 (2.971)	66.56 (2.420)	68.62 (2.571)	0.326	0.950
Post	Mean (Std.Err)	64.54 (3.155)	66.94 (3.740)	62.38 (2.947)	53.08 (3.917)	59.63 (3.275)	57.85 (3.561)	63.92 (2.863)	65.25 (3.483)	63.23 (2.585)	60.63 (3.049)	66.31 (2.929)		66.69 (3.127)
	p-value Partial	1.000	0.521	<b>0.002</b>	0.185	0.080	0.164	0.391	<b>0.040</b>	0.546	<b>0.014</b>	0.278		0.059
	$\eta^2$ Obs.P			<b>0.490</b>					<b>0.252</b>		<b>0.341</b>			<b>0.741</b>
				<b>0.943</b>					<b>0.557</b>					
Variable	Plan/Organize		Organization of materials		Monitor		Metacognition index		Global executive composite					
Group	Control	Active	Control	Active	Control	Active	Control	Active	Control	Active	Control	Active	p*	
Pre	Mean (Std.Err)	66.46 (2.382)	70.88 (3.877)	56.00 (2.805)	53.85 (3.322)	71.31 (2.755)	65.46 (2.688)	66.08 (2.302)	70.75 (3.041)	67.31 (2.863)	72.19 (2.830)	72.19 (2.830)	0.735	
Post	Mean (Std.Err)	61.85 (3.048)	65.94 (3.416)	52.13 (3.000)	52.62 (3.079)	64.81 (3.639)	65.15 (3.658)	63.77 (2.920)	64.56 (3.417)	64.92 (3.294)	65.75 (3.290)	65.75 (3.290)		
	p-value Partial	0.164	0.158	<b>0.040</b>	0.473	0.056	0.937	0.245	<b>0.050</b>	0.217	<b>0.018</b>	0.217		
	$\eta^2$ Obs.P			<b>0.253</b>					<b>0.232</b>		<b>0.322</b>			
				<b>0.559</b>					<b>0.513</b>		<b>0.704</b>			

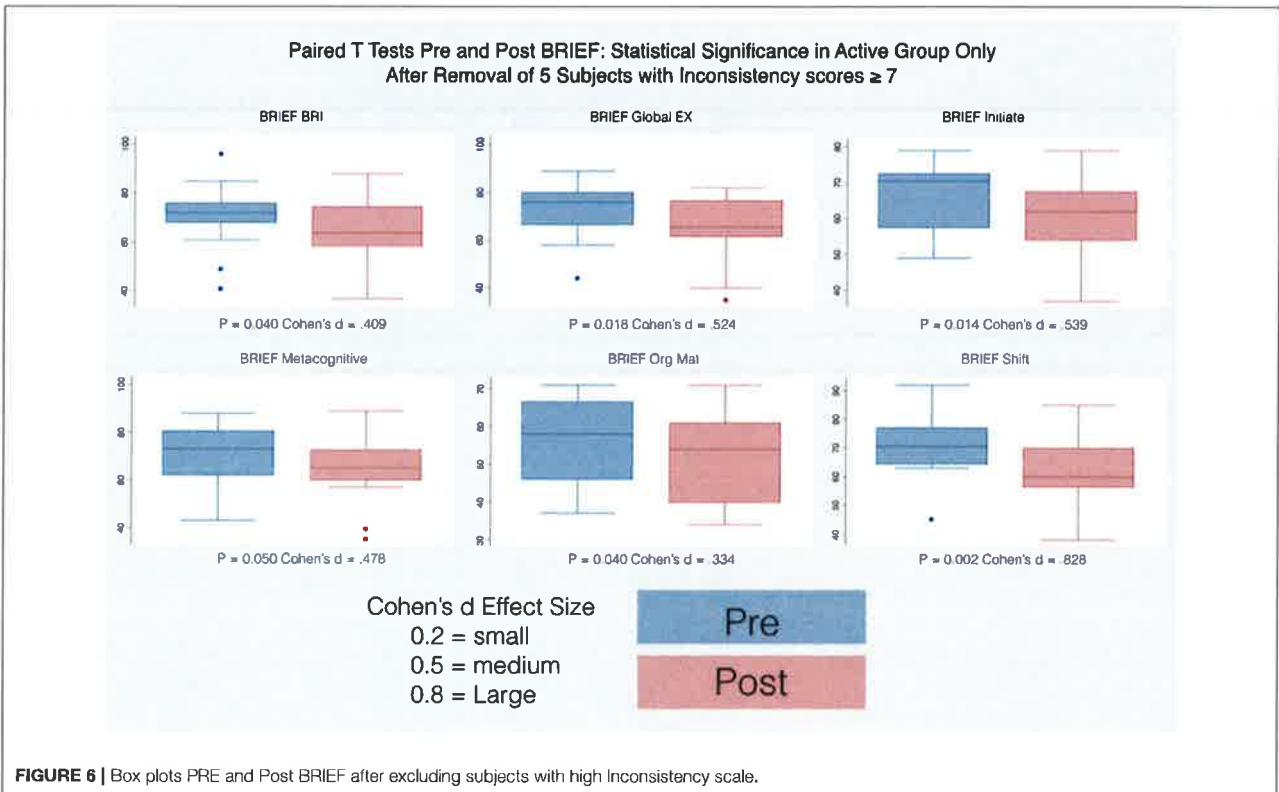
In bold the results that are statistically significant. In underlined italic the results that are worse POST vs. PRE mCTS/B.

tests and further emphasizes the benefit of specific brain based sound stimulation as demonstrated in the statistically significant improvements in the group in this study. These were also confirmed by the results obtained from the statistical analysis of the questionnaires results (Table 4 and Figures 6, 7).

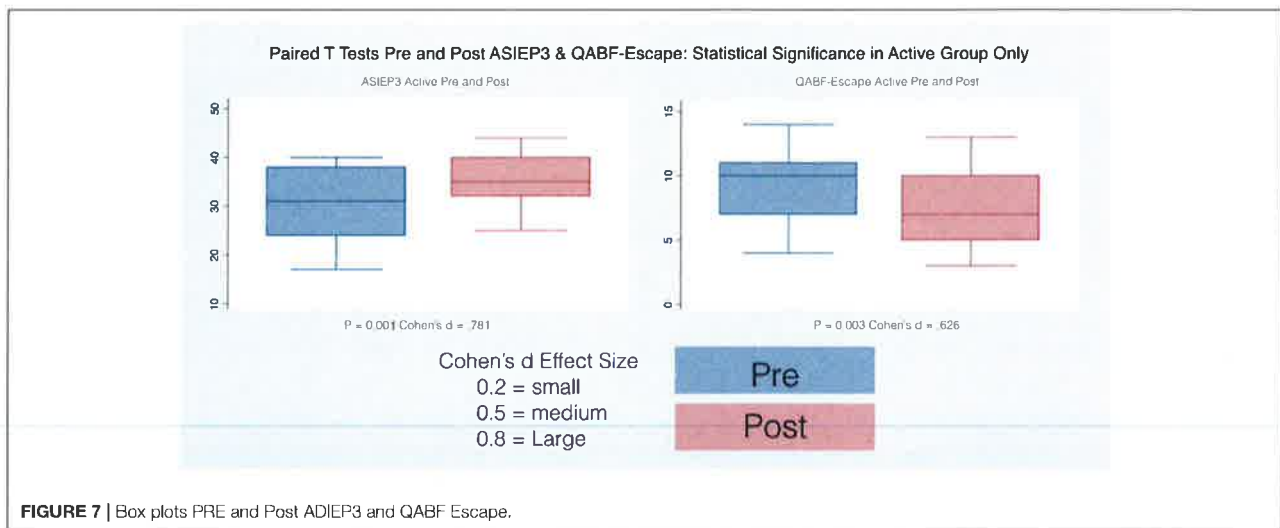
Furthermore, the emotional impairments in ASD may be broader than just a mere consequence of social impairments (54) that can be problematic for developing children especially when complicated by aberrant signaling and perception of internal bodily sensation referred to as interoception. The atypical interoception observed in ASD is thought to be due to a pathological processing of multisensory connections and integration in cortical and subcortical areas (55). It is reasonable to suggest that aberrant sensorimotor integration with feed forward pathophysiology is associated with the motor impairments and motor control disturbances commonly observed in ASD (56). Such disturbances are associated with a persisting impairment of maintaining postural control that begins in infancy and that might serve as an early diagnostic marker or endophenotype of autism (57). These impairments are associated with patterns of postural control and memory performance-attention deficits that are associated with emotional language processing in ASD (54). The relationships of postural control mechanisms and cognitive functions suggest that both should be utilized as measurements in the diagnosis and treatment of ASD patients. For instance, abnormalities in the development of spontaneous fidgety movement patterns

of infancy are seen in ASD and are associated with deficits in language skills and cognition at school age (58). Besides these deficits, children that are not able to stand still or constantly shift their weight from leg to leg will be expected to show differences in their center of pressure (CoP) that might be measured by posturography. The CoP measured by posturography involves a trajectory occurring from a shift in the body weight from one foot to the other during quiet stance allowing for identification of stable and unstable postural control (59). The measurement of CoP by posturography may also identify biomarkers of ASD as postural control systems are problematic, starting in infancy and continuing throughout the lifespan (57). ASD infants demonstrate a motor pathology of postural control as their heads may characteristically drop backwards when they are held horizontally (1). Interestingly, in spite of well documented motor pathology in ASD, the diagnostic criteria of the spectrum does not typically include motor symptomatology (60). It is known that ASD is associated with aberrancies in sensorimotor processing such that postural instability suffers when visual feedback is utilized over somatosensory information (61). Furthermore, pathology in the motor fronto-striatal and cerebellar systems are associated with difficulty of cognitive functions and movement control associated with walking, posture and ataxia similar to that seen in ASD (62).

Parents of subjects in the Active group of this investigation reported significant improvements in communication and social



**FIGURE 6 |** Box plots PRE and Post BRIEF after excluding subjects with high Inconsistency scale.



skills as have other investigators of the effects of neurofeedback treatment in ASD (63). These were also confirmed by the results obtained from the statistical analysis of the questionnaires results (**Table 4** and **Figures 6, 7**). Only the SRS-2 questionnaire did not show any statistically significant change although all its scores showed a decrease in value (an improvement) for both the Active and the Control groups with the exception of the Social Awareness in the Control group (in underline italic in **Table 4**). Not all the indexes showed an improvement: for both the Active and Control group the Speech / Language Communication and the Sensory/ Cognitive Awareness of the ATEC had an increase in value (statistically significant in the Active group - in underline italic in **Table 4**) indicating a worsening between PRE and Post evaluations. Similarly, the Active group showed a worsening in the Social Attention score, and the Control group in the Escape and Nonsocial Reinforcement in the QAFB questionnaires (although not statistically significant - again in underline italic in **Table 4**). The implications of this need to be considered with utilization of the Mente device with further investigation in these areas needed. The Control group showed a statistically significant improvement only in the Health/Physical Behavior of the ATEC questionnaire, whereas the Active group had statistically significant improvements in the scores of the ABC questionnaire, of the Sociability scale of the ATEC questionnaire, of the Escape, Nonsocial Reinforcement and Total scores of the QAFB questionnaire, and of the Shift, BRI, Initiate, Organization of Materials, MCI and GEC of the BRIEF questionnaire. Clearly, some of the questionnaires demonstrated significant changes whereas others did not indicating that the questionnaires are all specific for different measurements as we have detailed. As the questionnaires are validated instruments utilized in clinical applications around the globe, the significant positive changes in the Active group compared to the Control group are supportive of the positive effects of the treatment and are in concert with the physical measurements we have reported.

## LIMITATIONS

There were several limitations in this investigation. The large percentage of drops outs due to an inability or lack of importance to return for a post treatment examination demanded the randomization of a larger number of subjects to compensate and obtain the sample size planned for and the results may be biased by the drop-out rate. No subjects dropped out because of problems of tolerance with the Mente device or treatment. Although the parents of the Active group were generally pleased with the treatment outcomes, there were a large number that did not embrace the need to return for outcome studies due to costs of their visits. We feel that future studies providing the cost of transportation and lodging for subjects would contribute to better compliance with outcome testing but may be beyond funding reality. The physical and emotional characteristics of ASD children do make standardized testing a challenge. They find it difficult to stand on platforms, tolerate electrode caps and following instructions. Furthermore, this investigation was conducted at one neurological center and the results might not be generalized to a larger population. Most treatments of ASD involve multiple therapies at the same times and the isolation of an individual therapy that might act better in concert or combination with other therapies is not realized in this study. We used qEEG as an outcome measurement in this study and found it to be a robust tool. However, throughout the literature, alterations in the power of specific frequency bands in qEEG have been described in ASD, but they are very far from being a diagnostic test that is used in common clinical practice. Neurofeedback is a promising way to help children with ASD but some typical limitations of such technique should be taken into consideration. Conventional neurofeedback treatments are usually offered by professionals in their offices. This implies a considerable effort from parents, and patients themselves, both in terms of time and resources. Doing the therapy in clinical environments may sometimes increase the

patients' stress and could affect the therapy outcomes. Along with the limitations of the traditional neurofeedback approach, there is the limited number of sessions that professionals can offer, and the patient can sustain (one or two per week), due to the transfers home-office and the cost of the session. Another limitation is that EEG is usually collected by means of caps (or single electrodes) to be placed on the scalp and wet with a sticky electroconductive gel. Also, the EEG cap usually comes with wires that can limit the patient's movements. Depending on the context and the severity of symptoms, this may cause discomfort to ASD patients that often don't like to be touched or constrained. Thus, a wireless device equipped with dry sensors and specifically designed for home-based treatment as in this study is of benefit and thought to complement traditional NFB therapies is highly desirable and easy to use for not trained people (i.e. parents).

## CONCLUSIONS

In conclusion, the outcomes of this investigation suggest that the use of the Mente Autism device as a novel NFB tool is associated with significant positive changes in the neuroregulation of ASD children. This 12 weeks home based randomized placebo controlled trial resulted in statistically significant changes in qEEG, Posturography and standard questionnaires used in the assessment of children affected by ASD. The changes were associated with statistically and substantively significant changes for subjects that received the treatment and not for those in the placebo controlled group. The use of the Mente Autism device shows promise as an addition to a treatment program of ASD. Furthermore, our results confirmed reports in the literature that qEEG is able to detect changes produced by NFB in children affected by ASD. The utilization of posturography as an alternative method to detect such changes is beneficial but demands that the instrument be sensitive enough to detect small changes and sturdy and robust enough to take the abuse some of the ASD children inflict to the devices during data collection. Mente Autism has a unique approach to target ASD using a home-based NFB treatment in an easy way for patients and parents. It can represent a valid complementary tool to increase the effectiveness of traditional NFB therapies since part of the therapy can be carried on at home, every day, ensuring continuity and comfort for patients and their families.

## REFERENCES

1. Kotsopoulos S. [Early diagnosis of autism: phenotype-endophenotype]. *Psychiatriki* (2015) 25:273–81.
2. Bemporad JR, Ratey JJ, O'Driscoll G. Autism and emotion: an ethological theory. *Am J Orthopsychiatry* (1987) 57:477–84. doi: 10.1111/j.1939-0025.1987.tb03563.x
3. Nadel S, Poss JE. Early detection of autism spectrum disorders: screening between 12 and 24 months of age. *J Am Acad Nurse Pract.* (2007) 19:408–17. doi: 10.1111/j.1745-7599.2007.00244.x
4. Friedrich EV, Suttie N, Sivanathan A, Lim T, Louchart S, Pineda JA. Brain-computer interface game applications for combined neurofeedback and

## PRESENTATIONS

The preliminary findings of this study were presented at the 6th Cambridge International Conference on Mental Health at Claire College, University of Cambridge, Cambridge, UK held on September 20–22, 2017 and at the International Symposium for Clinical Neuroscience, Orlando, Florida, USA held on May 24–26, 2018.

## DISCLOSURES

GP and EO are affiliated with and have financial interests in Vestibular Technologies, LLC, the company that manufactures and sells the CAPS Professional System used to obtain posturographic data in this study. None of the other authors have any disclosures or conflicts of interest that might affect this investigation.

## AUTHOR CONTRIBUTIONS

FC, GP, AH, MA, RZ, EK, DB, PL, and EO contributed to the conception and design of the study. EK, DB, and PL organized the database. FC and GP performed the statistical analysis. FC wrote the first draft of the manuscript. GP, AH, MA, RZ, EK, DB, PL, and EO wrote sections of the manuscript. All authors contributed to manuscript revision, read and approved the submitted version.

## FUNDING

We wish to thank the Carrick Institute, Plasticity Brain Centers and Neurotech International Limited for funding and equipment utilized in this investigation.

## ACKNOWLEDGMENTS

We wish to thank the Carrick Institute, Plasticity Brain Centers and Neurotech International Limited for funding and equipment utilized in this investigation. As always we are indebted to the Carrick Institute and the Bedfordshire Centre for Mental Health Research in association with the University of Cambridge. We are grateful to the clinical and support staff of the Orlando Plasticity Brain Center for their assistance in conducting this study at their facility with special appreciation to Jamie Norman and Matthew Antonucci.

biofeedback treatment for children on the autism spectrum. *Front Neuroeng.* (2014) 7:21. doi: 10.3389/fneng.2014.00021

5. Coben R, Linden M, Myers TE. Neurofeedback for autistic spectrum disorder: a review of the literature. *Appl Psychophysiol Biofeedback* (2010) 35:83–105. doi: 10.1007/s10484-009-9117-y
6. Weber W, Newmark S. Complementary and alternative medical therapies for attention-deficit/hyperactivity disorder and autism. *Pediatr Clin N Am.* (2007) 54:983–1006. doi: 10.1016/j.pcl.2007.09.006
7. Thompson L, Thompson M, Reid A. Functional neuroanatomy and the rationale for using EEG biofeedback for clients with Asperger's syndrome. *Appl Psychophysiol Biofeedback* (2010) 35:39–61. doi: 10.1007/s10484-009-9095-0

8. Porges SW. The polyvagal theory: new insights into adaptive reactions of the autonomic nervous system. *Clev Clin J Med*. (2009) 76:886–90. doi: 10.3949/ccjm.76.s2.17
9. Micoulaud-Franchi JA, McGonigal A, Lopez R, Daudet C, Kotwas I, Bartolomei F. Electroencephalographic neurofeedback: level of evidence in mental and brain disorders and suggestions for good clinical practice. *Neurophysiol Clin Clin Neurophysiol*. (2015) 45:423–33. doi: 10.1016/j.neucli.2015.10.077
10. Hurt E, Arnold LE, Lofthouse N. Quantitative EEG neurofeedback for the treatment of pediatric attention-deficit/hyperactivity disorder, autism spectrum disorders, learning disorders, and epilepsy. *Child Adol Psychiatr Clin N Am*. (2014) 23:465–86. doi: 10.1016/j.chc.2014.02.001
11. Schoenberg PL, David AS. Biofeedback for psychiatric disorders: a systematic review. *Appl Psychophysiol Biofeedback* (2014) 39:109–35. doi: 10.1007/s10484-014-9246-9
12. Majmudar CA, Mahajan R, Morshed BI. Real-time hybrid ocular artifact detection and removal for single channel EEG. in: IEEE, editor. *2015 IEEE International Conference on Electro/Information Technology*. DeKalb, IL: IEEE (2015), p. 330–4.
13. Billeci L, Sicca F, Maharatna K, Apicella F, Narzisi A, Campatelli G, et al. On the application of quantitative EEG for characterizing autistic brain: a systematic review. *Front Hum Neurosci*. (2013) 7:442. doi: 10.3389/fnhum.2013.00442
14. Cantor DS, Chabot R. QEEG studies in the assessment and treatment of childhood disorders. *Clin EEG Neurosci*. (2009) 40:113–21. doi: 10.1177/155005940904000209
15. Lane JD, Kasian SJ, Owens JE, Marsh GR. Binaural auditory beats affect vigilance performance and mood. *Physiol Behav*. (1998) 63:249–52. doi: 10.1016/S0031-9384(97)00436-8
16. Dumermuth G, Molinari L. Spectral analysis of the EEG. Some fundamentals revisited and some open problems. *Neuropsychobiology* (1987) 17:85–99.
17. Steriade M, Gloor P, Llinás RR, Lopes da Silva FH, Mesulam MM. Basic mechanisms of cerebral rhythmic activities. *Electroencephal Clin Neurophysiol*. (1990) 76:481–508.
18. Sürmeli T, Eralp E, Mustafazade I, Kos IH, Ozer GE, Sürmeli OH. Quantitative EEG neurometric analysis-guided neurofeedback treatment in postconcussion syndrome (pcs): forty cases. How is neurometric analysis important for the treatment of PCS and as a biomarker? *Clin EEG Neurosci*. (2017) 48:217–30. doi: 10.1177/1550059416654849
19. Pritchep LS, John ER. QEEG profiles of psychiatric disorders. *Brain Topogr*. (1992) 4:249–57.
20. Thatcher RW, Walker RA, Biver CJ, North DN, Curtin R. Quantitative EEG normative databases: validation and clinical correlation. *J Neurother*. (2003) 7:87–121. doi: 10.1300/J184v07n03\_05
21. Cohen J. *Statistical Power Analysis for the Behavioral Sciences*. 2nd Edn. Mahwah, NJ: Lawrence Erlbaum Associates (1988).
22. Shumway-Cook A, Horak FB. Assessing the influence of sensory interaction of balance. Suggestion from the field. *Phys Ther*. (1986) 66:1548–50.
23. Pagnacco G, Carrick FR, Wright CH, Oggero E. *In-situ* verification of accuracy, precision and resolution of force and balance platforms. *Biomed Sci Instrum*. (2014) 50:171–8.
24. Scoppa F, Capra R, Gallamini M, Shiffer R. Clinical stabilometry standardization: basic definitions–acquisition interval–sampling frequency. *Gait Posture* (2013);37:290–2. doi: 10.1016/j.gaitpost.2012.07.009
25. Alonso AC, Luna NM, Mochizuki L, Barbieri F, Santos S, Greve JM. The influence of anthropometric factors on postural balance: the relationship between body composition and posturographic measurements in young adults. *Clin (Sao Paulo)*. (2012) 67:1433–41. doi: 10.6061/clinics/2012(12)14
26. Magiati I, Moss J, Yates R, Charman T, Howlin P. Is the autism treatment evaluation checklist a useful tool for monitoring progress in children with autism spectrum disorders? *J Intellect Disabil Res*. (2011) 55:302–12. doi: 10.1111/j.1365-2788.2010.01359.x
27. Constantino JN, Gruber CP. *Social Responsiveness Scale (SRS)*. Torrance, CA: Western Psychological Services (2012).
28. Gioia GA, Isquith PK, Guy SC, Kenworthy L. *Behavior Rating Inventory of Executive Function, (Brief-2)*. Lutz, FL: Psychological Assessment Resource (2016).
29. Krug DA, Arick J, Almond P. Behavior checklist for identifying severely handicapped individuals with high levels of autistic behavior. *J Child Psychol Psychiatry* (1980) 21:221–9. doi: 10.1111/j.1469-7610.1980.tb01797.x
30. Singh N, L Matson J, E Lancioni G, Singh AN, Adkins AD, McKeegan GF, et al. Questions About Behavioral Function in Mental Illness (QABF-MI): A Behavior Checklist for Functional Assessment of Maladaptive Behavior Exhibited by Individuals With Mental Illness (2006). *Behav Modif*. 2006 30:739–51. doi: 10.1177/0145445506286700
31. Sheikhan A, Behnam H, Noroozian M, Mohammadi MR, Mohammadi M. Abnormalities of quantitative electroencephalography in children with Asperger disorder in various conditions. *Res Autism Spectrum Disord*. (2009) 3:538–46. doi: 10.1016/j.rasd.2008.11.002
32. Hughes JR, John ER. Conventional and quantitative electroencephalography in psychiatry. *J Neuropsychiatry Clin Neurosci*. (1999) 11:190–208.
33. Sheikhan A, Behnam H, Mohammadi MR, Noroozian M, Mohammadi M. Detection of abnormalities for diagnosing of children with autism disorders using of quantitative electroencephalography analysis. *J Med Syst*. (2012) 36:957–63. doi: 10.1007/s10916 010 9560 6
34. Stroganova TA, Nygren G, Tsetlin MM, Posikera IN, Gillberg C, Elam M, et al. Abnormal EEG lateralization in boys with autism. *Clin Neurophysiol Off J Int Fed Clin Neurophysiol*. (2007) 118:1842–54. doi: 10.1016/j.clinph.2007.05.005
35. Gasser T, Verleger R, Bacher P, Sroka L. Development of the EEG of school-age children and adolescents. I. Analysis of band power. *Electroencephalogr Clin Neurophysiol*. (1988) 69:91–9.
36. Watling R, Hauer S. Effectiveness of Ayres sensory integration(R) and sensory-based interventions for people with autism spectrum disorder: a systematic review. *Am J Occup Ther Off Publ Am Occup Ther Assoc*. (2015) 69:6905180030p1–12. doi: 10.5014/ajot.2015.018051
37. Chaudhury S, Nag TC, Jain S, Wadhwa S. Role of sound stimulation in reprogramming brain connectivity. *J Biosci*. (2013) 38:605–14. doi: 10.1007/s12038-013-9341-8
38. Lyra L, Rizzo LE, Sunahara CS, Pachito DV, Latorraca COC, Martimbiano ALC, et al. What do cochrane systematic reviews say about interventions for autism spectrum disorders? *Sao Paulo Med J Rev Paulista Med*. (2017) 135:192–201. doi: 10.1590/1516-3180.2017.0058200317
39. Wabbeh H, Calabrese C, Zwickey H. Binaural beat technology in humans: a pilot study to assess psychologic and physiologic effects. *J Altern Complement Med*. (2007) 13:25–32. doi: 10.1089/acm.2006.6196
40. Pratt H, Starr A, Michalewski HJ, Dimitrijevic A, Bleich N, Mittelman N. A comparison of auditory evoked potentials to acoustic beats and to binaural beats. *Hear Res*. (2010) 262:34–44. doi: 10.1016/j.heares.2010.01.013
41. Chan JS, Langer A, Kaiser J. Temporal integration of multisensory stimuli in autism spectrum disorder: a predictive coding perspective. *J Neural Transm*. (2016) 123:917–23. doi: 10.1007/s00702-016-1587-5
42. Boraston Z, Blakemore SJ. The application of eye-tracking technology in the study of autism. *J Physiol*. (2007) 581:893–8. doi: 10.1113/jphysiol.2007.133587
43. Nation K, Penny S. Sensitivity to eye gaze in autism: is it normal? Is it automatic? Is it social? *Dev Psychopathol*. (2008) 20:79–97. doi: 10.1017/S0954579408000047
44. Itier RJ, Batty M. Neural bases of eye and gaze processing: the core of social cognition. *Neurosci Biobehav Rev*. (2009) 33:843–63. doi: 10.1016/j.neubiorev.2009.02.004
45. Falck-Ytter T, von Hofsten C. How special is social looking in ASD: a review. *Prog Brain Res*. (2011) 189:209–22. doi: 10.1016/B978-0-444-53884-0.00026-9
46. Papagiannopoulou EA, Chitty KM, Hermens DF, Hickie IB, Lagopoulos J. A systematic review and meta-analysis of eye-tracking studies in children with autism spectrum disorders. *Soc Neurosci*. (2014) 9:610–32. doi: 10.1080/17470919.2014.934966
47. Guillon Q, Afzali MH, Roge B, Baduel S, Kruck J, Hadjikhani N. The importance of networking in autism gaze analysis. *PLoS ONE* (2015) 10:e0141191. doi: 10.1371/journal.pone.0141191
48. Emery NJ. The eyes have it: the neuroethology, function and evolution of social gaze. *Neurosci Biobehav Rev*. (2000) 24:581–604. doi: 10.1016/S0149-7634(00)00025-7
49. Pfeiffer UJ, Vogeley K, Schilbach L. From gaze cueing to dual eye-tracking: novel approaches to investigate the neural correlates of

- gaze in social interaction. *Neurosci Biobehav Rev.* (2013) 37:2516–28. doi: 10.1016/j.neubiorev.2013.07.017
50. Grossberg S, Vladusich T. How do children learn to follow gaze, share joint attention, imitate their teachers, and use tools during social interactions? *Neural Netw Off J Int Neural Netw Soc.* (2010) 23:940–65. doi: 10.1016/j.neunet.2010.07.011
  51. Dawson G, Webb S, Schellenberg GD, Dager S, Friedman S, Aylward E, et al. Defining the broader phenotype of autism: genetic, brain, and behavioral perspectives. *Dev Psychopathol.* (2002) 14:581–611. doi: 10.1017/S095457940203103
  52. Bruinsma Y, Koegel RL, Koegel LK. Joint attention and children with autism: a review of the literature. *Ment Retard Dev Disabil Res Rev.* (2004) 10:169–75. doi: 10.1002/mrdd.20036
  53. Pagnacco G, Klotzek AS, Carrick FR, Wright CH, Oggero E. Effect of tone-based sound stimulation on balance performance of normal subjects: preliminary investigation. *Biomed Sci Instrum.* (2015) 51: 54–61.
  54. Lartseva A, Dijkstra T, Buitelaar JK. Emotional language processing in autism spectrum disorders: a systematic review. *Front Hum Neurosci.* (2014) 8:991. doi: 10.3389/fnhum.2014.00991
  55. DuBois D, Ameis SH, Lai MC, Casanova MF, Desarkar P. Interoception in autism spectrum disorder: a review. *Int J Dev Neurosci Off J Int Soc Dev Neurosci.* (2016) 52:104–11. doi: 10.1016/j.ijdevneu.2016.05.001
  56. Velasques B, Machado S, Paes F, Cunha M, Sanfim A, Budde H, et al. Sensorimotor integration and psychopathology: motor control abnormalities related to psychiatric disorders. *World J Biol Psychiatry Off J World Fed Soc Biol Psychiatry* (2011) 12:560–73. doi: 10.3109/15622975.2010.551405
  57. Memari AH, Ghanouni P, Shayestehfar M, Ghaheri B. Postural control impairments in individuals with autism spectrum disorder: a critical review of current literature. *Asian J Sports Med.* (2014) 5:e22963. doi: 10.5812/asjms.22963
  58. Einspieler C, Peharz R, Marschik PB. Fidgety movements—tiny in appearance, but huge in impact. *J Pediatr.* (2016) 92:S64–70. doi: 10.1016/j.jpeds.2015.12.003
  59. Wang Z, Newell KM. Inter-foot coordination dynamics of quiet standing postures. *Neurosci Biobehav Rev.* (2014) 47:194–202. doi: 10.1016/j.neubiorev.2014.08.007
  60. Paquet A, Olliac B, Golse B, Vaivre-Douret L. [Formula: see text]Current knowledge on motor disorders in children with autism spectrum disorder (ASD). *Child Neuropsychol J Norm Abnorm Dev Child Adolesc.* (2016) 22:763–94. doi: 10.1080/09297049.2015.1085501
  61. Lim YH, Partridge K, Girdler S, Morris SL. Standing postural control in individuals with autism spectrum disorder: systematic review and meta-analysis. *J Autism Dev Disord.* (2017) 47:2238–53. doi: 10.1007/s10803-017-3144-y
  62. Jaber M. [The cerebellum as a major player in motor disturbances related to autistic syndrome disorders]. *Encephale* (2017) 43:170–5. doi: 10.1016/j.encep.2016.03.018
  63. Kouijzer MEJ, van Schie HT, de Moor JMH, Gerrits BJL, Buitelaar JK. Neurofeedback treatment in autism. Preliminary findings in behavioral, cognitive, and neurophysiological functioning. *Res Autism Spectr Disord.* (2010) 4:386–99. doi: 10.1016/j.rasd.2009.10.007

**Conflict of Interest Statement:** The authors declare that the research was conducted in the absence of any commercial or financial relationships that could be construed as a potential conflict of interest.

Copyright © 2018 Carrick, Pagnacco, Hankir, Abdulrahman, Zaman, Kalambaheti, Barton, Link and Oggero. This is an open-access article distributed under the terms of the Creative Commons Attribution License (CC BY). The use, distribution or reproduction in other forums is permitted, provided the original author(s) and the copyright owner(s) are credited and that the original publication in this journal is cited, in accordance with accepted academic practice. No use, distribution or reproduction is permitted which does not comply with these terms.