

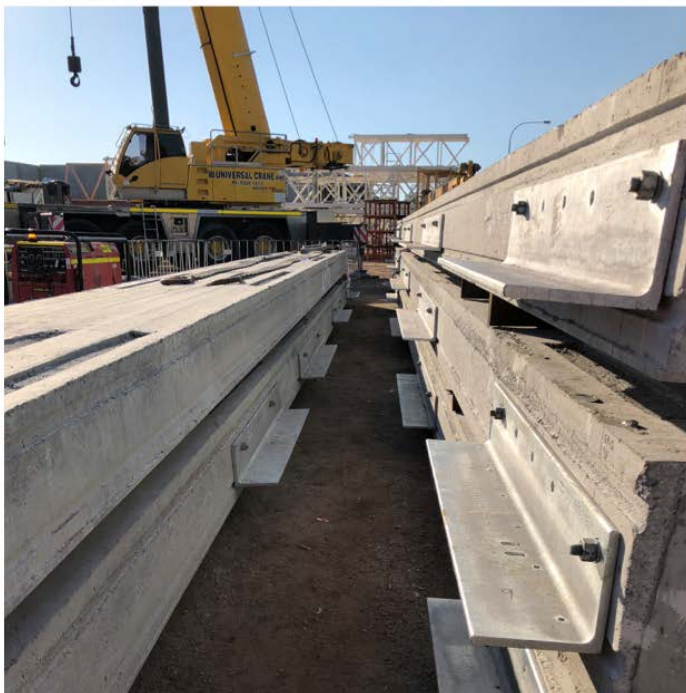
## ASSEMBLY OF THE PARKD SYSTEM COMMENCES AT PERTH CITY SUBARU

### Highlights:

- On-site foundation works complete
- Manufacturing of key structural components complete
- Assembly of main structural components now underway
- Substantial completion expected to take less than 4 weeks

**PARKD Ltd (ASX: PKD)** is pleased to announce that following the successful completion of on-site foundation works and pre-fabricated structural components, the Company has now commenced assembly of the Perth City Subaru car park.

The first elements to be installed will be the precast concrete and steel columns upon which PARKD'S Continuously Voids Beams (CVB's) will be attached, along with light weight steel and concrete slabs installed between the CVB's.



*(Left) Image of PARKDs CVB awaiting installation (Right) Image of column being erected at the site.*

Commencing this assembly phase is a significant milestone for the company, and once all three structural elements are in place will mark the first time this technology has been utilised in Australia for car park design and construction. The company expects substantial completion to take less than 4 weeks.

PARKD's Managing Director Peter McUtchen said; "Through the innovative application of the Company's patented Continuously Voided Beam (CVB) we have realised a solution that delivers time and construction efficiencies not possible through the use of traditional building methods. The light weight characteristic of the system has made it possible to build on this site without the use of complex and expensive ground or foundation solutions."

This project represents a foundational step for PARKD and once built, will allow the dealership to increase parking, maximize revenue from the available land, and provide a level of flexibility to dismount, move and reuse the parking structure time and time again.

Peter McUtchen said, "We believe we have the perfect solution to meet the needs of clients that require speed of construction and flexibility in land use, if a client needs to relocate, the business can simply pack up its entire car park structure and move it to a new site. We realise that the success of the system will also be in its application across a number different sectors, and we are currently looking at potential opportunities within the commercial and residential construction markets"

#### **[ENDS]**

For further information, please contact:

#### **Michael Wills**

Media & Public Relations

Email: [admin@parkdgroup.com](mailto:admin@parkdgroup.com)

Phone: 08 9429 8863

#### **ABOUT PARKD LTD**

Parkd has intellectual property rights to aspects of an innovative lightweight concrete "modular" car parking system. The modular aspect of the system and minimising the structural weight provides the ability to relocate the car park or adapt it to parking demands by adding or subtracting to the structural levels of the car park.

The Parkd Car Park System is currently designed for single or multi rise arrangements for up to 6 levels including ground level. The Parkd Car Park System will be prefabricated offsite with the potential to reduce construction time and construction cost when compared to traditional methods.