

DEMPSEY
MINERALS LTD



Hombre Muerto Lithium Project

Targeting production of Lithium Carbonate in the Lithium Triangle of South America

July 2018

Disclaimer and Important Information

This presentation has been prepared by Dempsey Minerals Limited (“Dempsey”). It contains forecasts and forward looking statements which are no guarantee of future performance and which involve certain risks. Actual results and future outcomes will in all likelihood differ from those outlined herein. The presentation should not be construed as an offer or invitation to subscribe for or purchase securities in Dempsey. Nor is it an inducement to make offer or an invitation with respect to said securities.

Forward-looking statements are statements that are not historical facts. Words such as “expect(s)”, “feel(s)”, “believe(s)”, “will”, “may”, “anticipate(s)” and similar expressions are intended to identify forward-looking statements. These statements include, but are not limited to statements regarding future production, resources or reserves and exploration results. All of such statements are subject to certain risks and uncertainties, many of which are difficult to predict and generally beyond the control of the Company, that could cause actual results to differ materially from those expressed in, or implied or projected by, the forward-looking information and statements. These risks and uncertainties include, but are not limited to: (i) those relating to the interpretation of drill results, the geology, grade and continuity of deposits and conclusions of economic evaluations, (ii) risks relating to possible variations in reserves nor recovery rates and changes in project parameters as plans continue to be refined, (iii) the potential for delays in exploration or development activities or the completion of feasibility studies, (iv) risks related to commodity price and foreign exchange rate fluctuations, (v) risks related to failure to obtain adequate financing on a timely basis and on acceptable terms or delays in obtaining governmental approvals or in the completion of development or construction activities, and (vi) other risks and uncertainties related to the Company’s prospects, properties and business strategy. Our audience is cautioned not to place undue reliance on these forward-looking statements that speak only as of the date hereof, and we do not undertake any obligation to revise and disseminate forward-looking statements to reflect events or circumstances after the date hereof, or to reflect the occurrence of or non-occurrence of any events.

The Company has not fully completed feasibility studies on all its projects. Accordingly, there is no certainty that such projects will be economically successful. Resources that are not reserves do not have demonstrated economic viability.

Hombre Muerto Project



Dempsey Minerals Limited is a lithium exploration company with the rights to earn 100% interest in projects located in the world class Lithium Triangle region in Argentina

Projects located in the Hombre Muerto salt flat, adjacent to Galaxy Resources (mkt cap; A\$1.2bn) and FMC Lithium Corp. (mkt cap; ~A\$15bn). POSCO is a potential new entrant subject to part sale of GXY's Sal de Vida project (ASX:GXY 29 May 2018)

The Hombre Muerto Salar is the premiere lithium brine basin in Argentina - high grade, low impurities, (Li:Mg <4) FMC El Fenix operation has been in production for over 20 years

Key Candelas project covers over 4,000+ ha of potential brine reservoirs contiguous with Galaxy Resources' Sal de Vida lithium project (29 May 2018: GXY sell portion of Sal de Vida containing 2.54Mt of LCE to POSCO for US\$280M)

Targeting fast tracking to production of Lithium Carbonate

Capital Structure

Propose company name change to: **GALAN LITHIUM LIMITED**

Securities	Dempsey Shares	Dempsey Options
Existing issued securities	95,240,001	16,300,000* 3,500,000** 25,000,000***
Current Cash	~\$1.8 million	

* Quoted options exercisable at \$0.14, Dec 2018

** Options exercisable at \$0.15, Nov 2019

*** Options exercisable at \$0.14, Dec 2019 (3m issued – 22m pending shareholder approval)

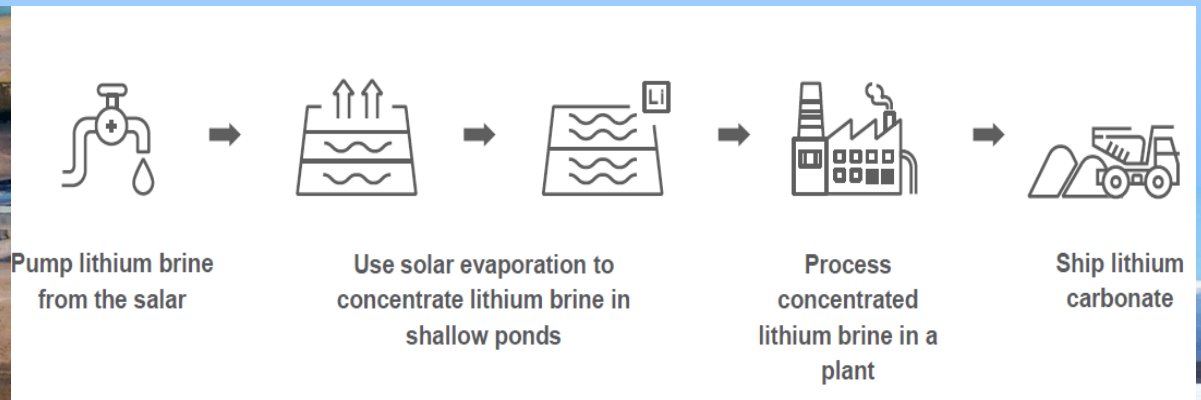
^^ MD performance shares to be advised

Performance Shares ^^	DMI Shares
<u>Vendor Class A Shares</u> upon delineating a JORC compliant resource of at least 80,000t contained LCE	15,000,000
<u>Vendor Class B Shares</u> upon the commencement of commercial production from a pilot plant	10,000,000

Lithium Brines

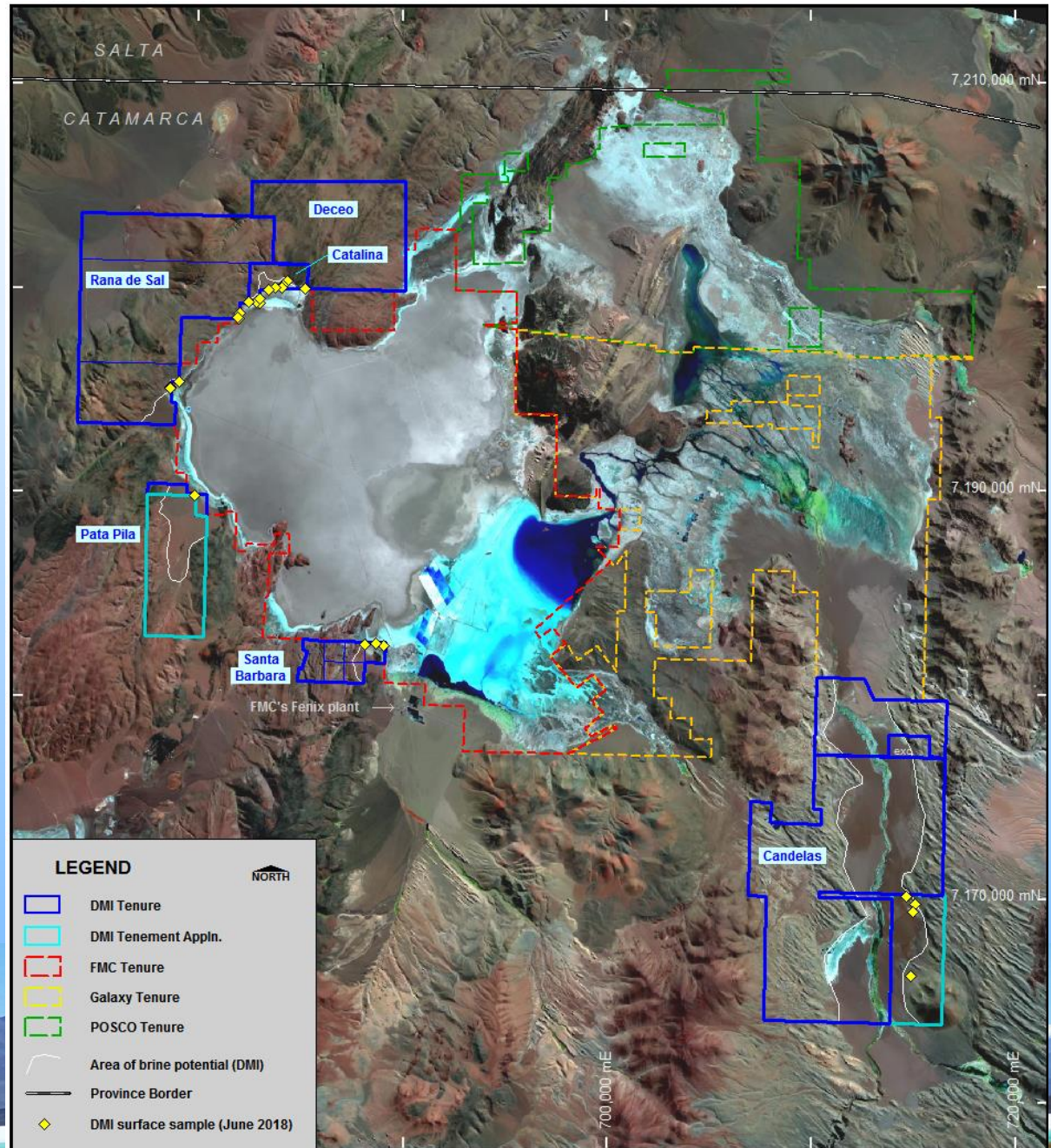
An Overview

- The largest reserves of lithium worldwide are found in the “Lithium Triangle” between Argentina, Bolivia and Chile
- The geology is comparable to petroleum exploration rather than conventional mining as it targets aquifers rather than a static resource
- Aquifer porosity plays a significant part of resource estimation, with higher porosity allowing for higher extraction rates. Brine impurities play an important part of the production cost to produce lithium carbonate
- Typically, Capex and Opex for lithium brine operations are lower than conventional hard rock mining
- Lithium brine operations are relatively simple with only a small number of steps required to produce Lithium Carbonate



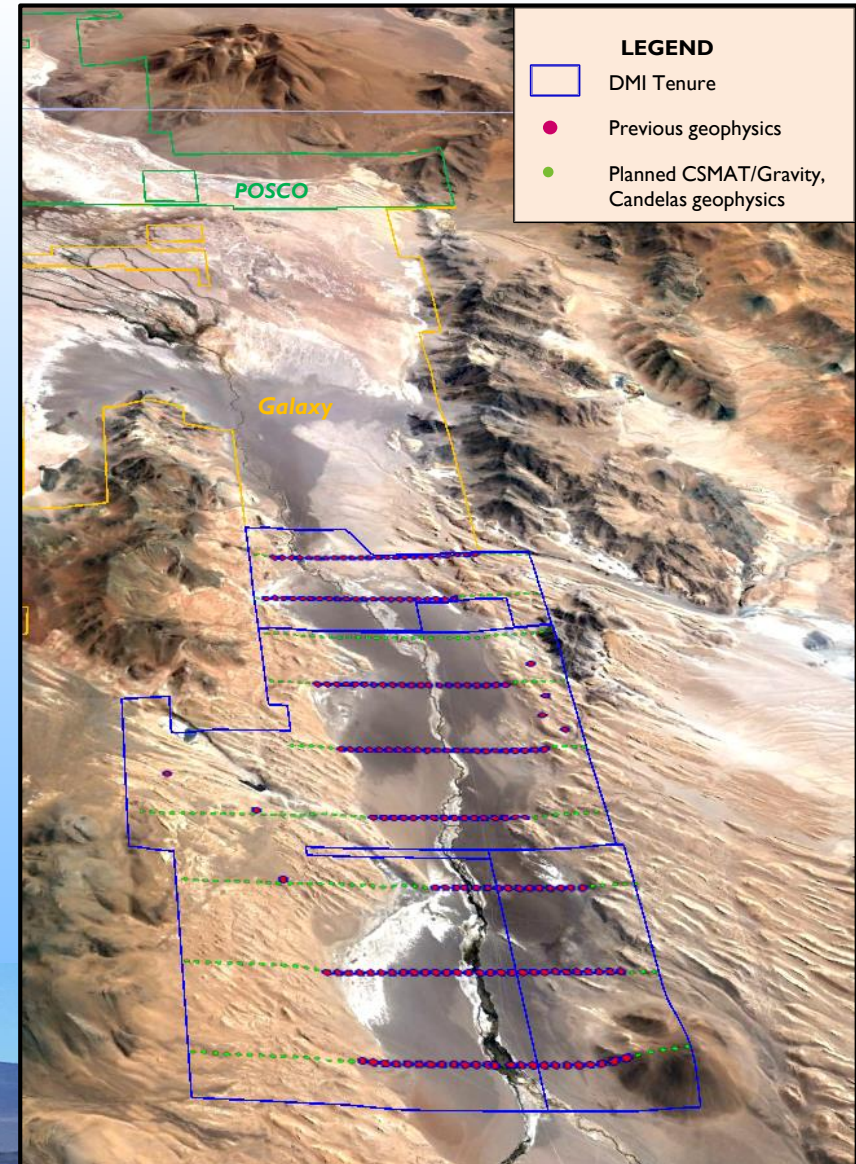
Hombre Muerto Projects

- Six project areas totalling ~ 25,000 Ha of landholdings
- Potential brine areas conservatively comprise ~6,900Ha
- Rich setting for lithium brine development – ground waters sourcing volcanic rocks, hydrothermal activity, a closed basin, arid climate, faulted environment
- Candelas project main focus of exploration
- Other targets lie within the Western Basin; *Catalina*, *Pata Pila*, *Rana de Sal*, *Catalina & Deceo*

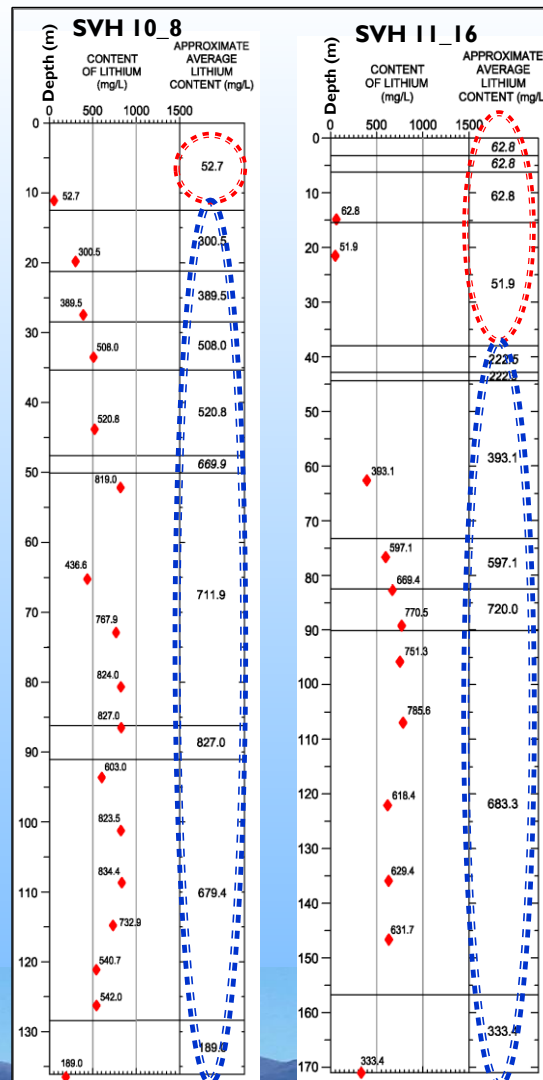
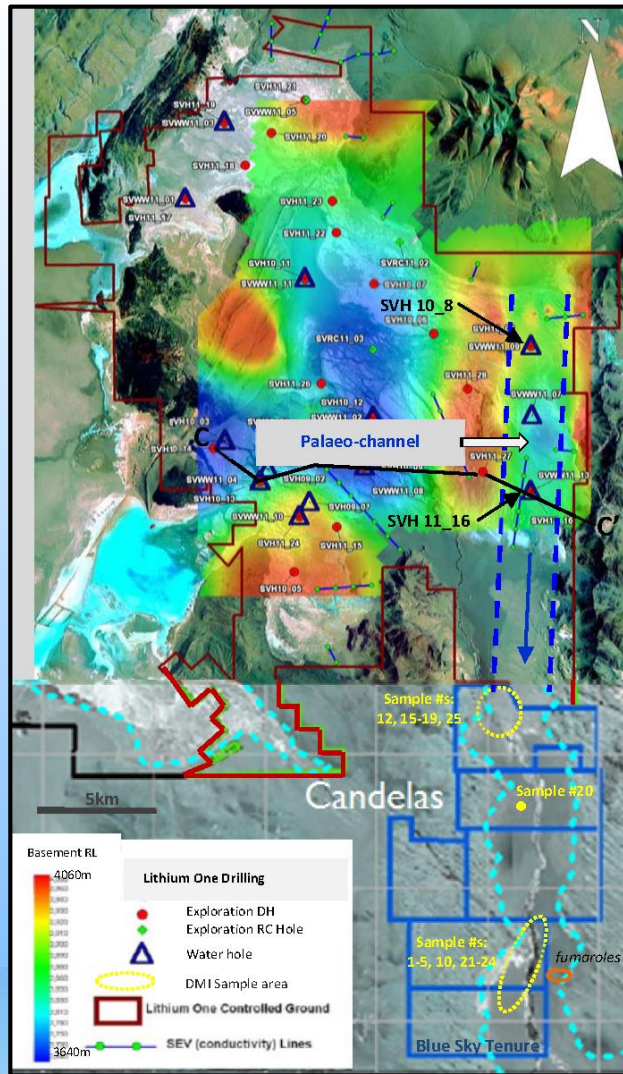


CANDELAS

- Encompasses the 15km x 3-4km Los Patos delta
- Extensive exploration potential, adjacent to Galaxy's Sal de Vida project
- Very shallow targets below surficial alluvial cover
- Sufficient area for evaporation ponds, processing infrastructure & great fresh, process water
- Rio Los Patos accounts for ~79% of incoming waters & lithium into the salar. Likely Li source rocks from the Cerro Galan volcano (associated fumaroles noted in the delta)



CANDELAS Surface Sampling



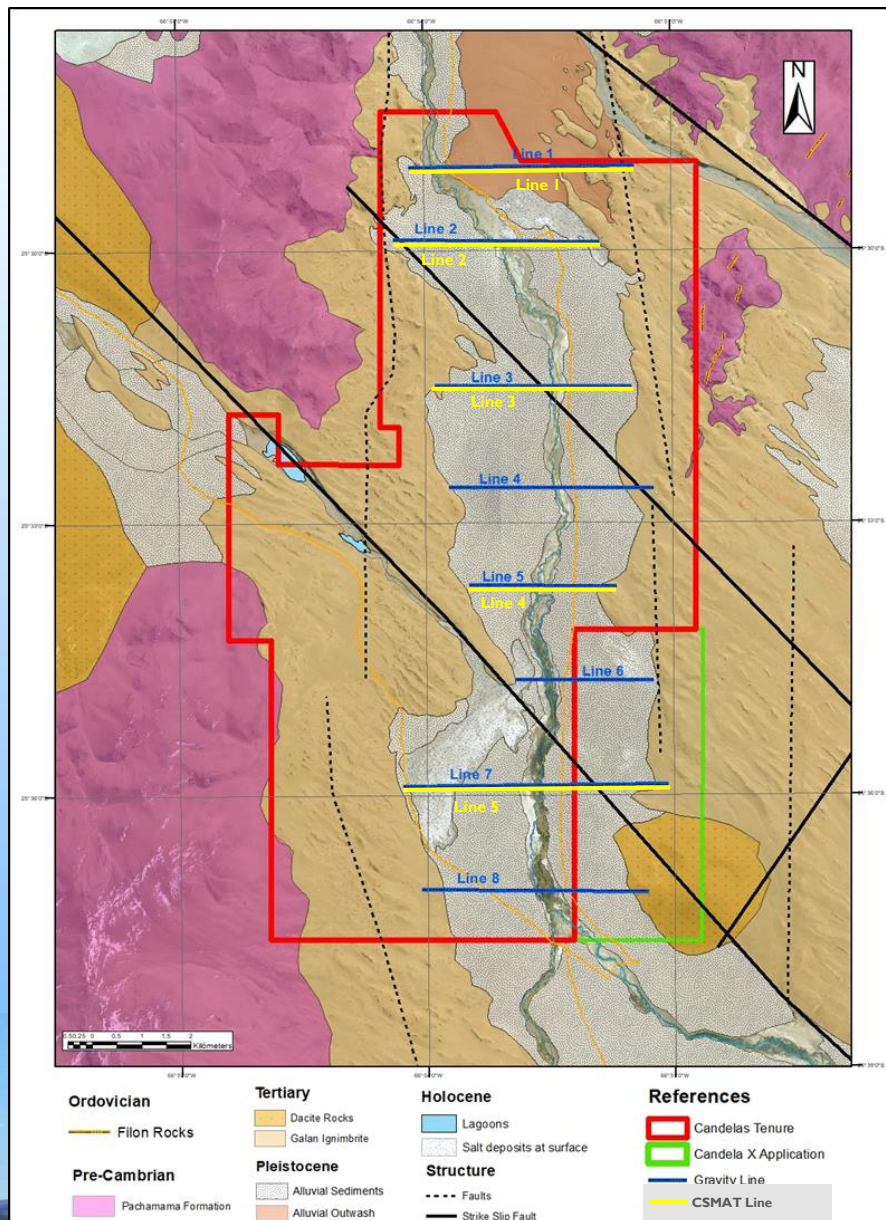
- Galaxy's closest drilling to Candelas indicates substantial volumes of brine hosted by coarse sands and gravels similar to those thought to exist at Candelas; perfect permeable host
 - Recent surface sampling in the north returned results similar to that obtained by Galaxy:
- GXY: ~50-60ppm Li DMI: to 59 ppm Li
- Los Patos palaeochannel clearly visible running into Galaxy ground, brine host
 - Potential for significant volumes of brine to exist at depth within the Candelas channel
 - Gravity & CSAMT (resistivity) survey completed. Aim to generate target areas for drilling
 - Survey conducted by highly regarded group Quantec who conducted work at Sal de Vida for Galaxy

Base gravity/aerial foto image showing eastern palaeo-channel, location of Lithium One (Galaxy) drilling & DMI Samples – Candelas area (ref: Lithium One NI43-101, March 2012)

Lithium One (Galaxy) drillholes SVH10_8 & SVH11_16 noting near surface Li versus underlying economic Li grades (ref: Lithium One NI43-101, March 2012)

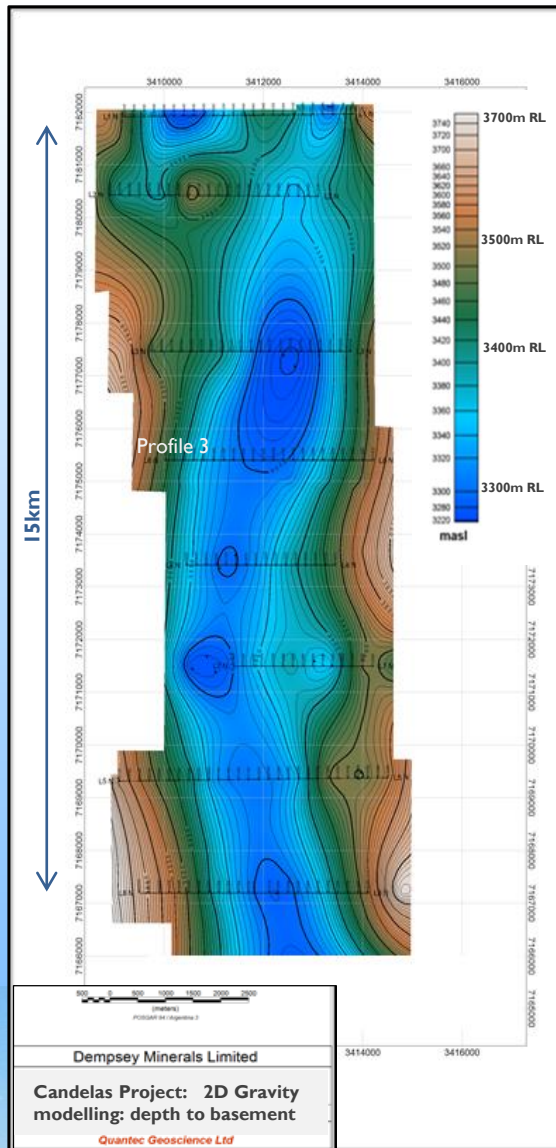
CANDELAS

Geophysics



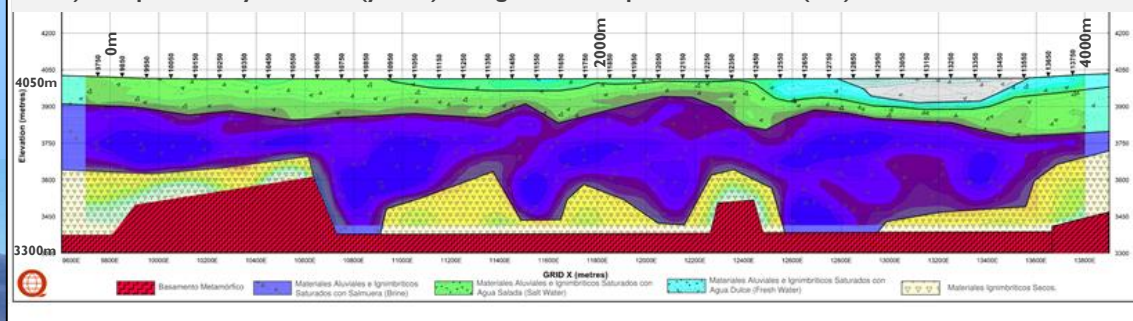
- CSAMT (Controlled Source Audio-frequency Magnetotellurics) survey recently conducted by Quantec Geoscience Ltd
 - Survey covered ~10km over 5 profile lines
 - Profiles interpreted to contain “...very conductive and shallow units that are compatible with units being saturated with brine...” (Quantec)(ASX:DMI 6 June 2018)
 - Interpreted brine layers range from ~150-400m+ thickness over entire extent of the survey
 - Interpreted brine layers remain open to the west
-
- Gravity survey also conducted at the same time
 - Survey covered the ~15km over 8 profile lines
 - Profiles interpreted a deep basin-channel environment with depths of up to 600m
 - Interpretation supports CSMAT findings of a large, deep channel hosting significant brine layers
 - Follow up geophysics extending lines to commence in August

CANDELAS Geophysics

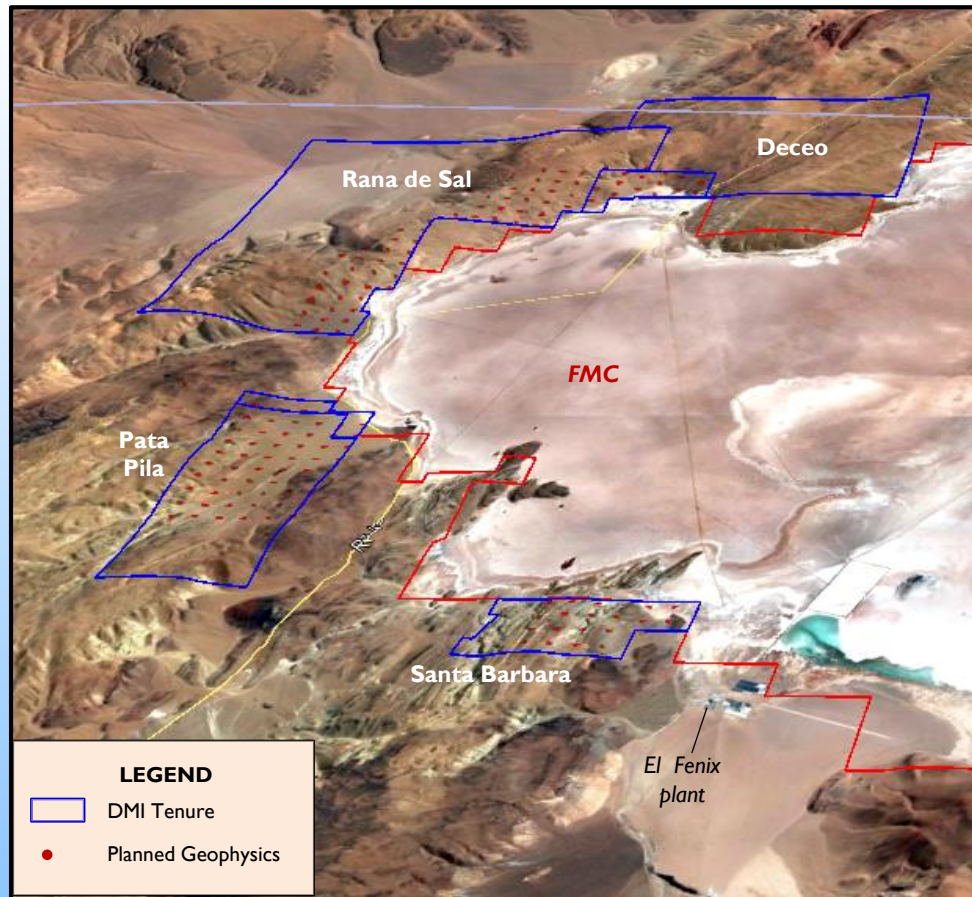


- Candelas channel lies within a structurally controlled graben formed into basement Pre-cambrian metamorphic rocks
- Extends for the length of the project, over 15km
- Channel filled with Tertiary ignimbrites, sourced from the nearby Galan volcano, and more recent Pleistocene sediments (alluvial fan and channel deposits and salar sediments)
- Interpreted Gravity and CSAMT survey results support each other showing depths to basement overlain by lowly resistive units compatible with units being saturated with brine
- Brine thicknesses interpreted to range from ~150 to 400m+
- Profile 3 and 2D Gravity interpretation show examples of the data obtained
- Results far exceeded company expectations

Profile 3 - Interpreted CSAMT model showing depths to lowly resistive brine saturated materials (purple/blue) with possible dry materials (yellow) sitting above interpreted basement (red)



WESTERN BASIN Projects



- Several areas covering margins of the Hombre Muerto salar, includes potential alluvial fan covered salar targets
- Initial near surface water sampling highly encouraging, several samples >1,000 mg/t Li
- Follow up geophysics (gravity & resistivity) surveys to commence in August

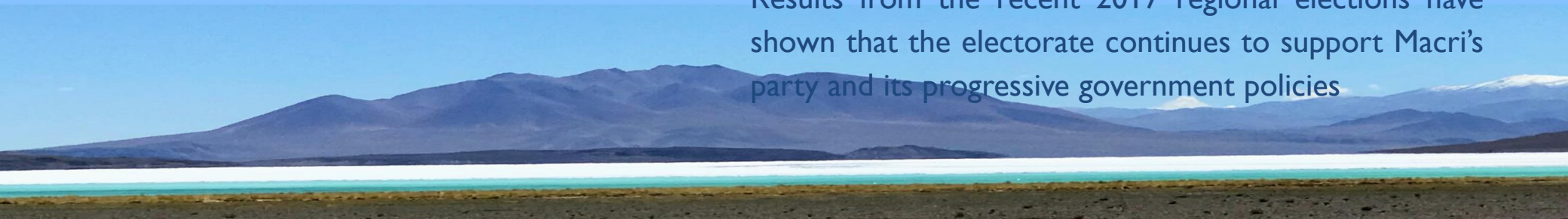
Sample ID	Easting	Northing	Li (mg/l)	Mg (mg/l)	Mg/Li	Location
MC1	682,946.2	7,199,241.6	1,070	2,187	2.04	Catalina
MC2	682,782.8	7,199,308.6	1,156	2,434	2.11	Catalina
MC3	682,940.1	7,199,454.7	690	1,615	2.34	Catalina
MC4	685,204.5	7,199,963.2	304	1,073	3.54	Catalina
MC5	684,311.3	7,200,306.6	149	395	2.66	Catalina
MC6	684,117.3	7,200,124.9	457	1,063	2.33	Catalina
MC7	684,052.1	7,199,990.3	1,272	3,186	2.51	Catalina
MC8	683,717.2	7,200,005.7	1,135	2,597	2.29	Catalina
MC9	683,402.1	7,199,896.6	602	1,295	2.15	Catalina
MR1	682,395.4	7,199,304.7	365	562	1.54	Rana de Sal
MR2	681,966.7	7,198,761.9	921	1,663	1.81	Rana de Sal
MR3	681,953.2	7,198,472.3	434	674	1.55	Rana de Sal
MR4	679,000.5	7,195,375.9	272	3,351	12.33	Rana de Sal
MR6	678,574.4	7,195,090.6	48	649	13.56	Rana de Sal
MR7	678,588.2	7,195,078.1	279	1,821	6.52	Rana de Sal
MD1	679,792.9	7,189,779.0	81	253	3.14	Pata Pila
MSTAB1	689,023.1	7,182,449.7	561	1,053	1.88	Santa Barbara
MSTAB2	688,641.5	7,182,532.0	539	1,078	2.00	Santa Barbara
MSTAB3	688,088.0	7,182,512.1	1,086	2,132	1.96	Santa Barbara



ARGENTINA



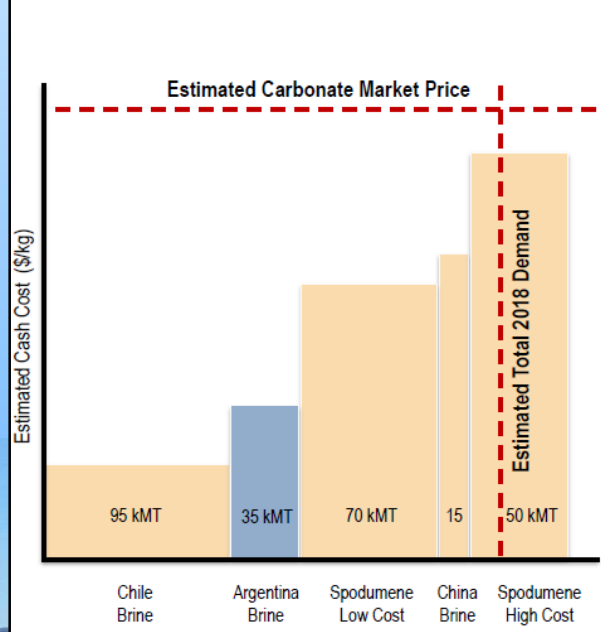
- In 2015 Mauricio Macri was elected President and has championed the opening up of the Argentinian economy to international investment
- The fixed exchange rate between the US\$ and Argentinian Peso has been dropped and capital controls are no longer in place
- The majority of export duties and trade controls have been removed. Consistent royalty regime for all minerals across most of the country introduced in 2017
- FMC, a US based company, has been successfully producing lithium carbonate and lithium hydroxide in Argentina for more than 20 years
- Results from the recent 2017 regional elections have shown that the electorate continues to support Macri's party and its progressive government policies



Lithium Market

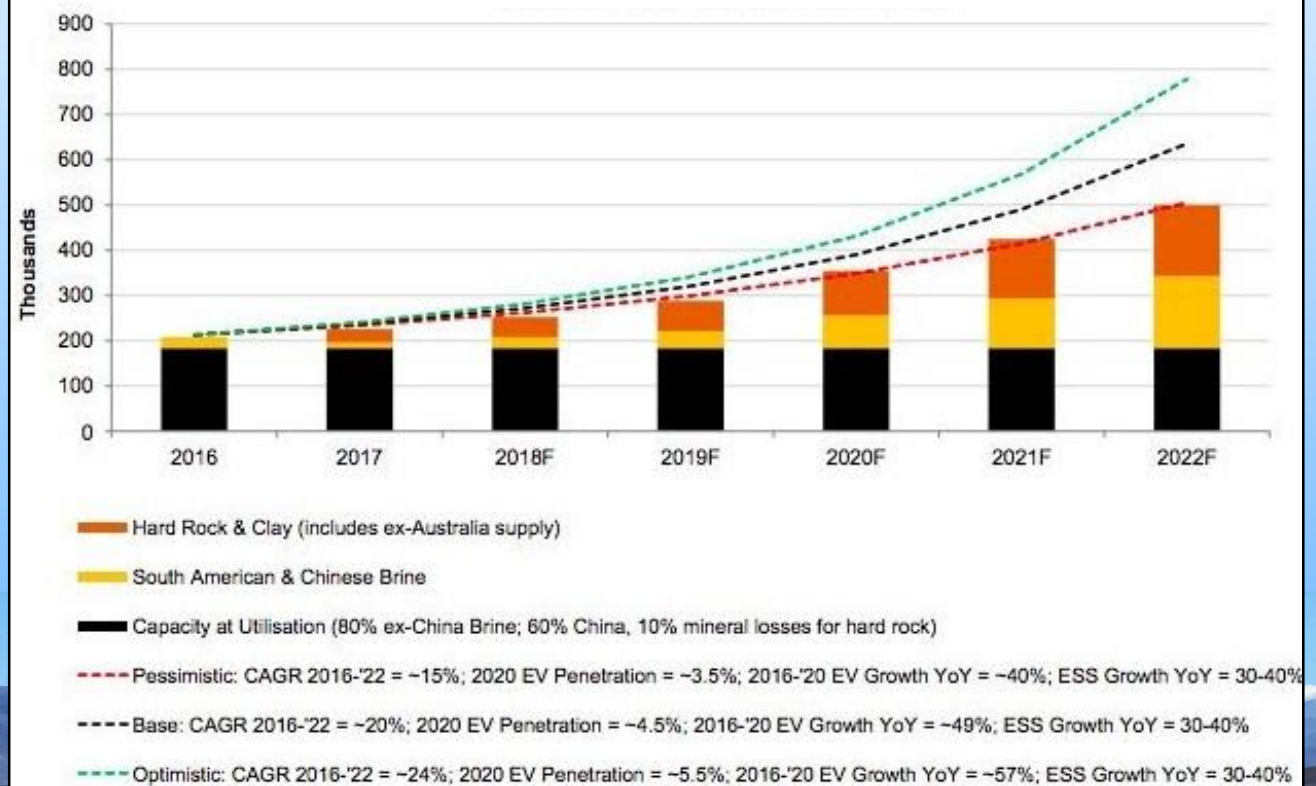
- The lithium price has risen significantly in the past two years with unprecedented prices exceeding >US\$20,000/t (spot) and >US\$13,000/t (contract)
- Price rise primarily due to the demand for lithium batteries in electric vehicles
- Lithium demand is expected to further increase which should place further upward pressure on prices
- Li brine producers are the lowest cost producers & are economic at US\$5,000/t

2018 Lithium Carbonate Cost Curve



Source: FMC Corp.

Strong Demand & Persistent Undersupply



Source: Orocobre Ltd

Lithium: Some Recent news

- ✓ The Tesla Semi planned for 2019 requires 16 times the amount of lithium than that for a 50kWh electric car
- ✓ The number of electric buses will triple within seven years, all of them in China (Bloomberg)
- ✓ “Contemporary Amperex Technology Ltd (CATL) is close to choosing one of three sites in the European Union for its first overseas plant” (Bloomberg) – CATL is the largest producer of lithium ion batteries in the Chinese market
- ✓ End users continue to scramble for access to lithium, eg; POSCO’s signing a DSO offtake & funding agreement with Pilbara Minerals

	Plans to launch 30 new EV models by 2025 and to be 25% of total sales in 2025
 HONDA	Intention to release dedicated EVs in China in 2018
	All new models will have full or partial electric engines by 2019
	Plans to offer 25 electrified models, with 12 fully BEVs, by 2025
	Stated that their new models from 2020 will be electric
	Plans to introduce 2 new EVs in the next 18 months, and the at least 20 new “all electric vehicles” by 2023
	Model 3 launched in July 2017, the company is targeting 20k/month production in December
	Introduction of Leaf full model change in Sep 2017 aimed at millennial market
 RENAULT	Electrified fleet to include 8 pure electric vehicles and 12 electrified models

Source: Company data, Goldman Sachs Global Investment Research

Thank You

DEMPSEY
MINERALS LTD



Level 2, 38 Richardson Street, West Perth, WA 6005
PO Box 396, West Perth, WA, 6872

Ph. +61 8 9322 6283 Fax. +61 8 9322 6398
www.dempseyminerals.com.au

