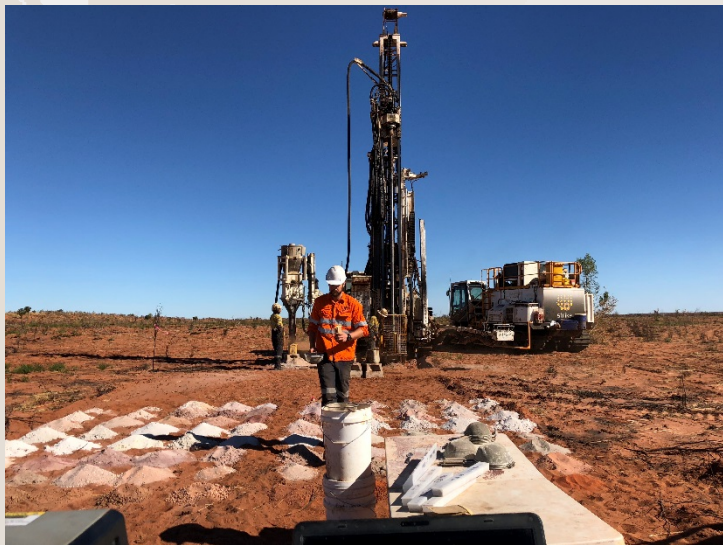




Sipa Resources Limited

Exploration update Uganda and Paterson North



**Diggers and Dealers
August 2018**

DISCLAIMER

This presentation has been prepared by Sipa Resources Limited (**Sipa**).

Summary of information: This presentation contains general and background information about Sipa's activities current as at the date of the presentation and should not be considered to be comprehensive or to comprise all the information that an investor should consider when making an investment decision. The information is provided in summary form, has not been independently verified, and should not be considered to be comprehensive or complete. It should be read solely in conjunction with the oral briefing provided by Sipa and all other documents provided to you by Sipa. Sipa is not responsible for providing updated information and assumes no responsibility to do so.

Not financial product advice: This presentation is not financial product, investment advice or a recommendation to acquire Sipa securities and has been prepared without taking into account the objectives, financial situation or needs of individuals. Before making an investment decision prospective investors should consider the appropriateness of the information having regard to their own objectives, financial situation and needs, and seek legal, taxation and financial advice appropriate to their jurisdiction and circumstances. Sipa is not licensed to provide financial product advice in respect of its securities or any other financial products. Cooling off rights do not apply to the acquisition of Sipa securities. Sipa assumes that the recipient is capable of making its own independent assessment, without reliance on this document, of the information and any potential investment and will conduct its own investigation.

Disclaimer: Sipa and its related bodies corporate and each of their respective directors, agents, officers, employees and advisers expressly disclaim, to the maximum extent permitted by law, all liabilities (however caused, including negligence) in respect of, make no representations regarding, and take no responsibility for, any part of this presentation and make no representation or warranty as to the currency, accuracy, reliability or completeness of any information, statements, opinions, conclusions or representations contained in this presentation. In particular, this presentation does not constitute, and shall not be relied upon as, a promise, representation, warranty or guarantee as to the past, present or the future performance of Sipa.

Future performance: This presentation contains certain forward-looking statements and opinion. The forward-looking statements, opinion and estimates provided in this presentation are based on assumptions and contingencies which are subject to change without notice, as are statements about market and industry trends, which are based on interpretations of current market conditions. Forward-looking statements, including projections, forecasts and estimates, are provided as a general guide only and should not be relied on as an indication or guarantee of future performance and involve known and unknown risks, uncertainties and other factors, many of which are outside the control of Sipa. Past performance is not necessarily a guide to future performance and no representation or warranty is made as to the likelihood of achievement or reasonableness of any forward looking statements or other forecast.

Risks: An investment in Sipa shares is subject to investment and other known and unknown risks, some of which are beyond the control of Sipa. You should have regard to the 'Key Risks' section of this presentation which outlines some of these risks.

Not an offer: This presentation is not, and should not be considered as, an offer or an invitation to acquire securities in Sipa or any other financial products and neither this document nor any of its contents will form the basis of any contract or commitment. This presentation is not a prospectus. Offers of securities in Sipa will only be made in places in which, or to persons to whom it would be lawful to make such offers. This presentation must not be disclosed to any other party and does not carry any right of publication. Neither this presentation nor any of its contents may be reproduced or used for any other purpose without the prior written consent of Sipa.

No Distribution in the US: This presentation is not an offer of securities for sale in the United States. Any securities to be issued by Sipa have not been and will not be registered under the US Securities Act of 1933, as amended (the "**US Securities Act**") and may not be offered or sold in the United States absent registration or an exemption from registration under the US Securities Act. No public offer of the securities is being made in the United States and the information contained herein does not constitute an offer of securities for sale in the United States. This presentation is not for distribution directly or indirectly in or into the United States or to US persons.

Monetary values: Unless otherwise stated, all dollar values are in Australian dollars (A\$). The information in this presentation remains subject to change without notice.

No distribution: Distribution of this presentation may be restricted by law. Persons who come into possession of this presentation should seek advice on and observe any such restrictions. Any failure to comply with such restrictions may constitute a violation of applicable securities laws.

JORC: The information in this report that relates to the exploration results previously reported in the ASX Announcements dated 22 April 2015, 17 November 2016, 1 December 2016, 22 February 2017, 24 May 2017, 19 June 2017, 18 September 2017, 22 September 2017, 12 October 2017 and 20 October 2017, 21 February 2018. The Company is not aware of any new information or data that materially affects the information included in those relevant market announcements.

OVERVIEW

- Sipa is a first mover in under explored frontier mineral provinces
- High quality exploration projects
 - Ugandan nickel copper sulphide discovery
 - Emerging copper gold discovery at Paterson North



High % of total spend in the ground, technically driven, interested only in large discoveries

Royalty Portfolio

Portfolio a legacy of discovery track record

- Sulphur Springs copper-zinc (Venturex *, under DFS) capped at \$3.7m
- Panorama – Kangaroo Caves (Venturex**)
- Ashburton Gold Deposit mined 1999-2004 1.7 million ounces (Northern Star***)
- Enigma Copper (Sandfire, ****)

* \$2 each tonne of ore from the Sulphur Springs Tenements processed to produce zinc concentrate up to \$3.7M

** Panorama royalty, 40% holder of a uncapped royalty equivalent to \$2 per dry metric tonne of all ore mined and processed

*** 1.75% Gross Royalty on all gold production from the Tenements, excluding the first 250,000 ounces of gold produced, and the Merlin Tenements; 0.75% Gross Royalty on all gold production from the Merlin tenements, excluding the first 250,000 ounces of gold produced

**** 1.0% of the Net Smelter Return

CORPORATE



Capital Structure

ASX Code	SRI
Shares (Ord.) (03/08/18)	1201m
Share Price (03/08/18)	1.2c
Market Cap	\$14.4m
Cash (at 30/06/18)	\$2.2m



Shareholders

JM Financial	8.6%
Rodiv NSW P/L Pension Fund	5.2%
Directors & Management	1.3%
Total in top 20	29.0%

Board

Craig McGown	Chairman
Lynda Burnett	Managing Director
Karen Field	Non Executive Director
Tim Kennedy	Non Executive Director

HIGHLIGHTS 2018 - Uganda

Landmark Farm-in and JV Agreement with Rio Tinto validates Sipa's exploration strategy

Deal Terms

- **Staged Option to earn up to 75% by spending up to US\$57M (A\$73M)**
- **Additional Cash payments of up to US\$2M**
- **Sipa to manage exploration for the initial period of 18 months**
- **DD period ceases 11 August 2018**



KITGUM PADER PROJECT - UGANDA



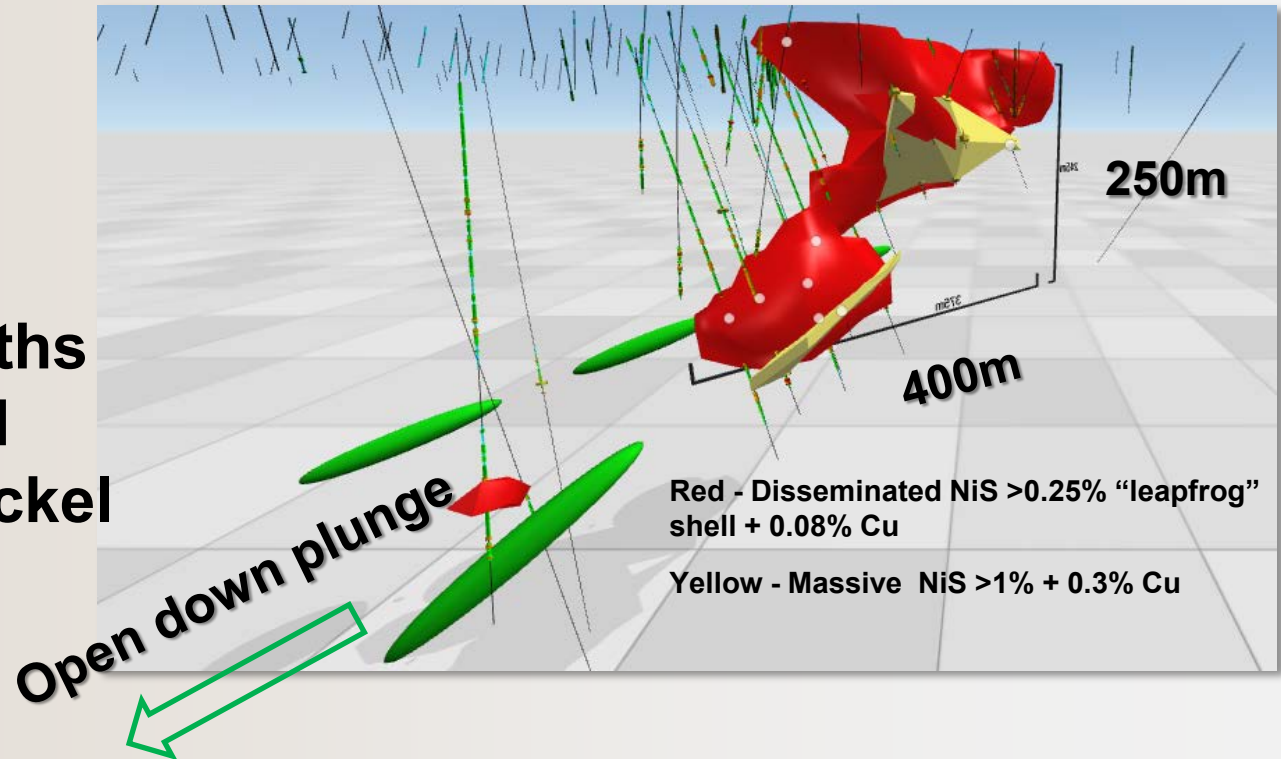
*Belt scale project on
craton margin*

- Akelikongo nickel sulphide discovery open down plunge
- 14 prospective mafic ultramafic intrusions now identified



KITGUM PADER PROJECT - UGANDA

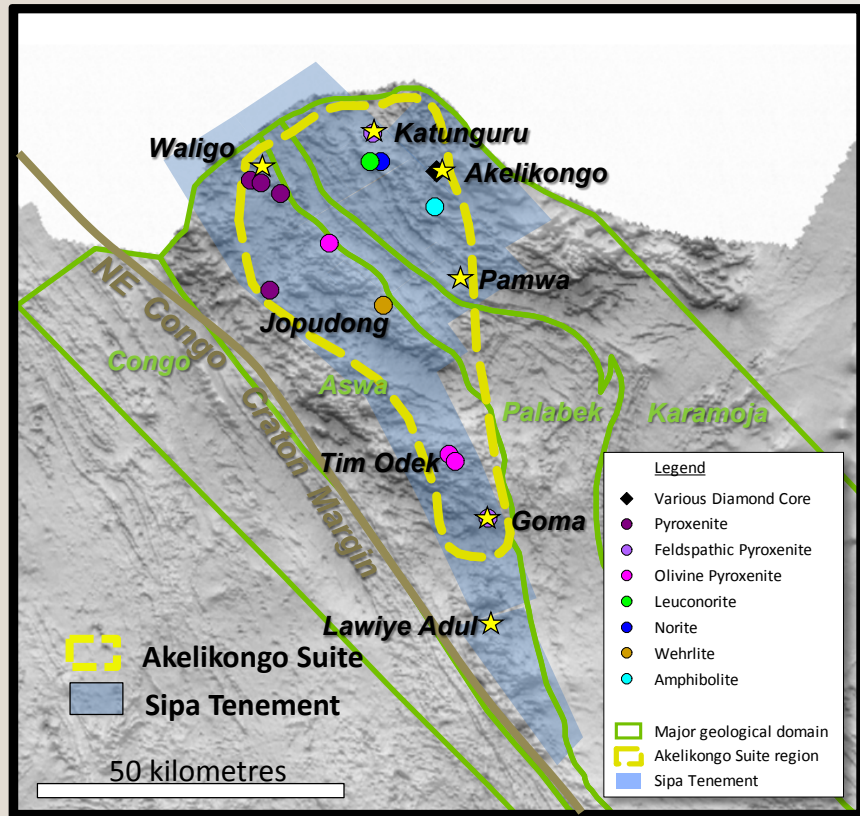
- Nickel Sulphide discovery at Akelikongo
- Thick (>100m) continuous widths of disseminated and massive Nickel and Copper sulphides



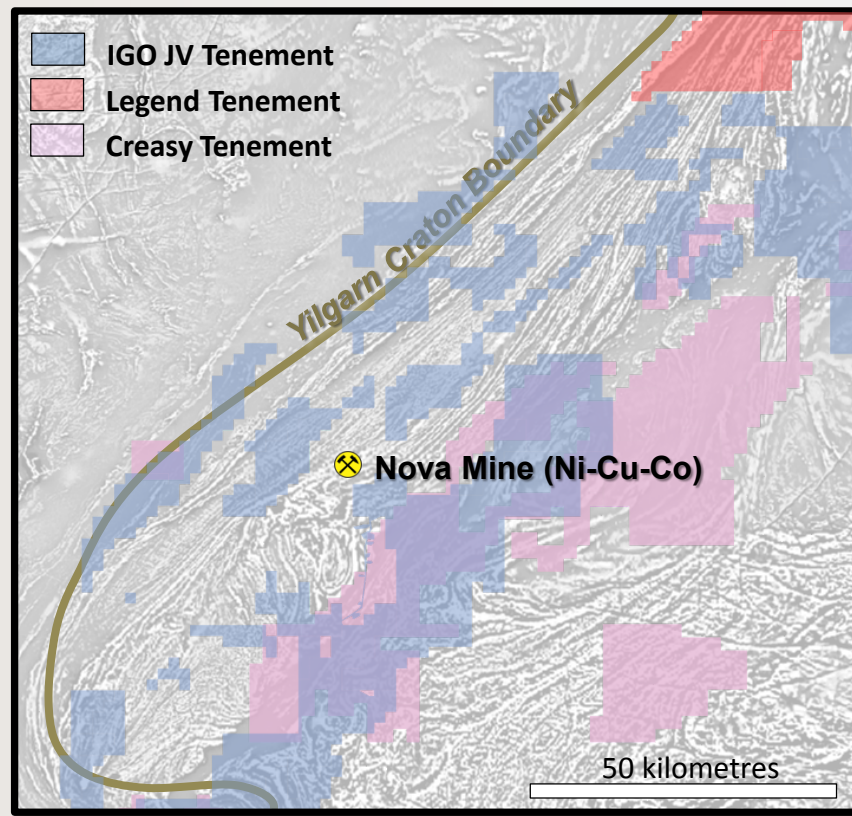
- Extends at least 400m from surface

EXPOSURE TO ENTIRE NICKEL PROVINCE

Kitgum Pader Project- Uganda



Compare with Fraser Range WA



PATERSON NORTH PROJECT WA

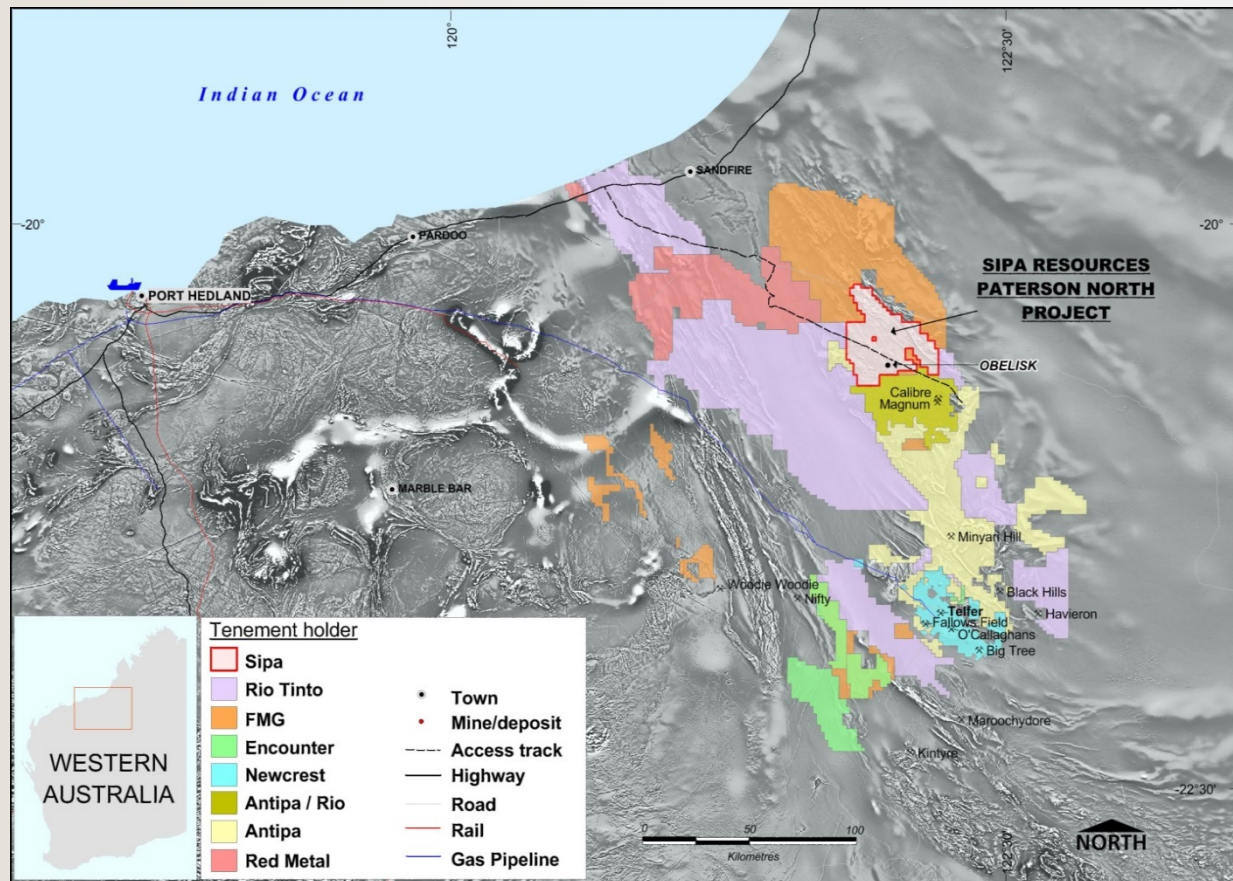


- **Key commodities gold copper**
- **Key position in an emerging and world class gold and copper mineralised belt (Telfer at 25Moz is world class)**
- **Paterson North has the address and the credentials and is almost unexplored**

COMPETITOR TENEMENTS

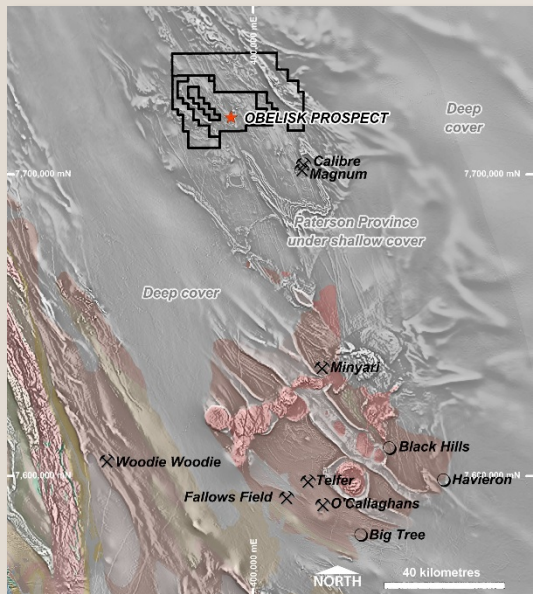
- Sipa exploring here since 2016
- Now surrounded on 3 sides by Rio and by FMG.

“This is the hottest land position in the country”



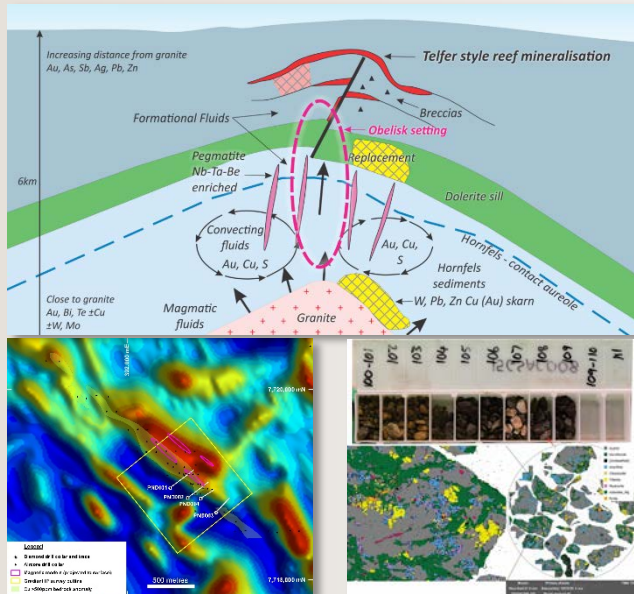
Exploration advancing to discovery

Year 1 -2016



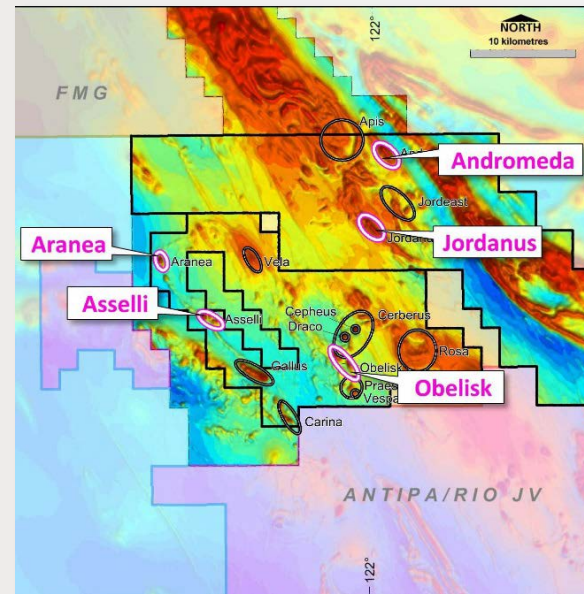
Targeting using regional data sets, broad regional reconnaissance drilling.

Year 2 - 2017



Test proof of concept, initial diamond drilling, experiment with different technologies.

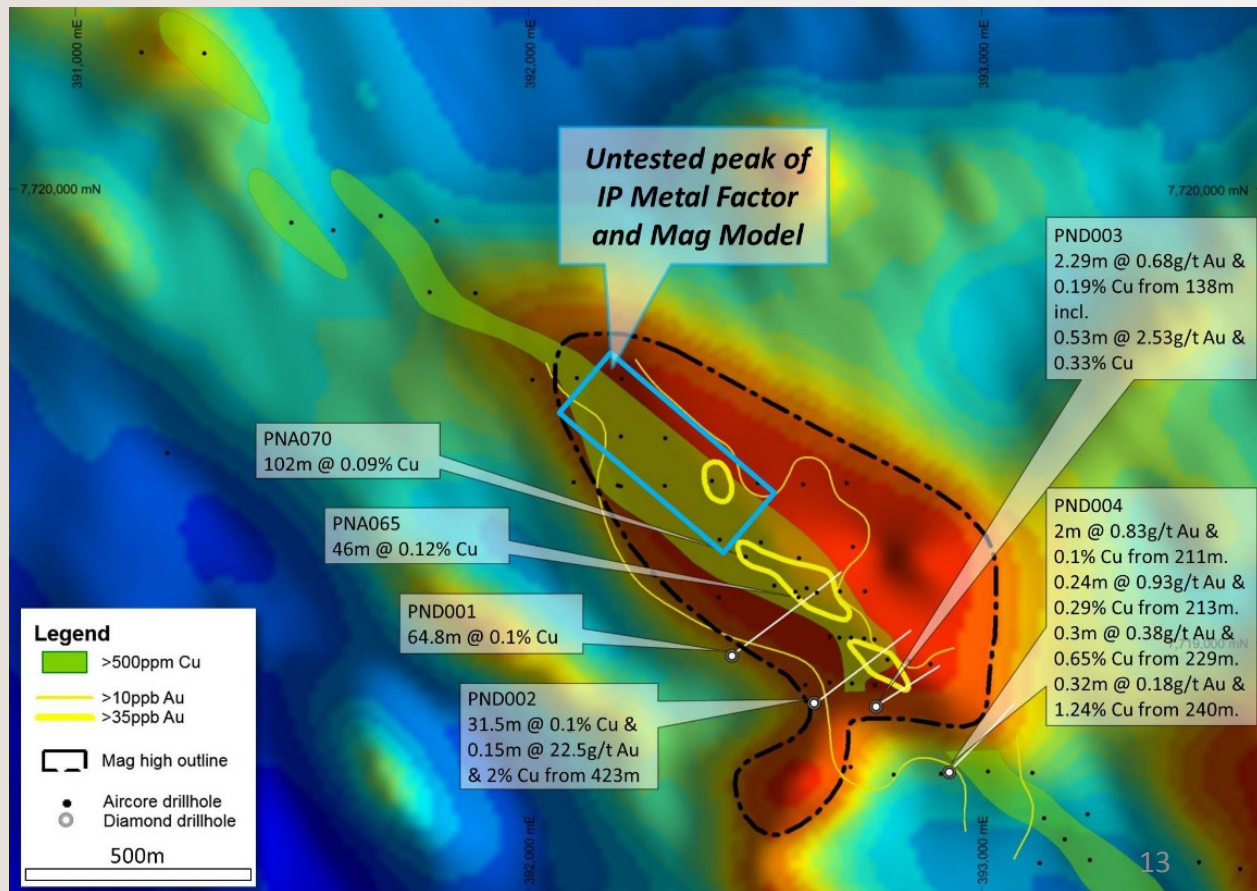
Year 3 - 2018



Re-interpret magnetics based on new drill data. New regional drill targets, prioritised.

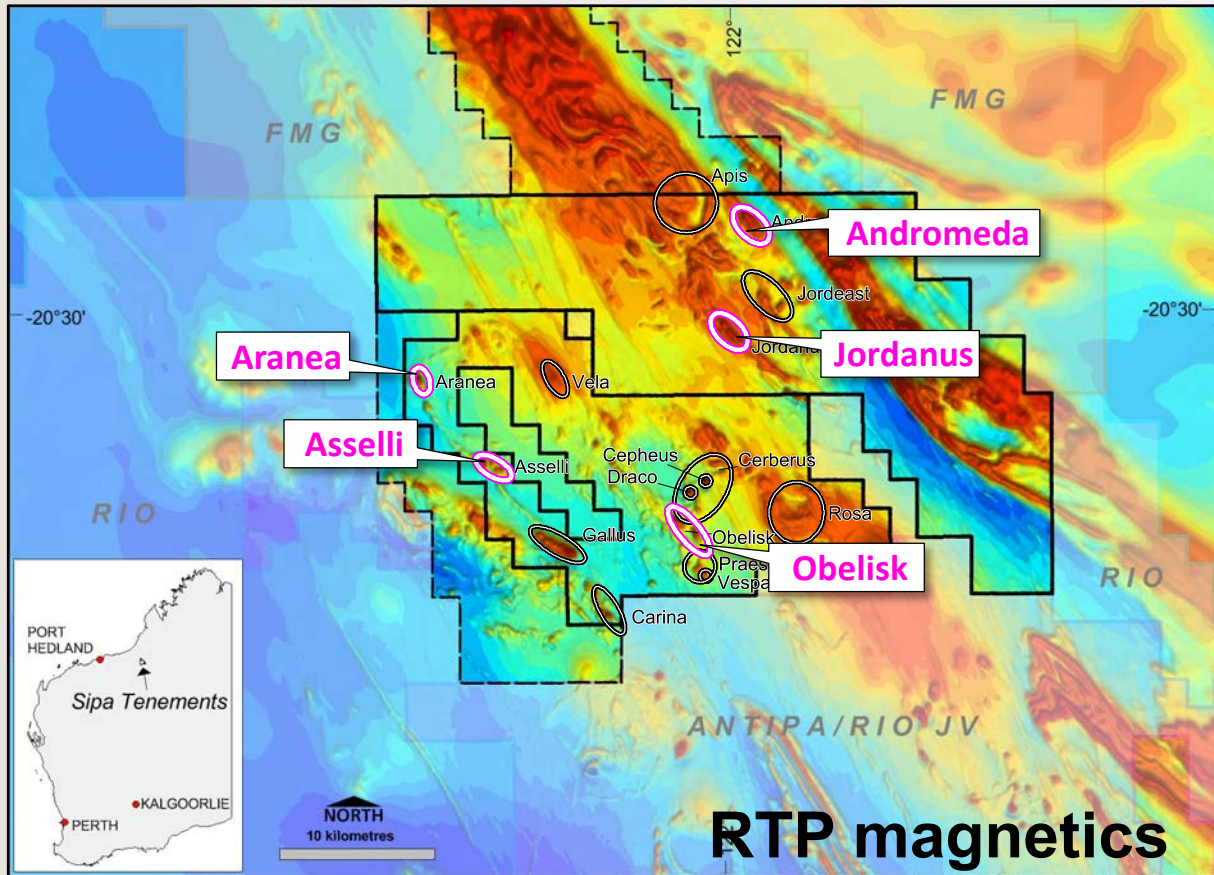
Obelisk – priority target

- Copper plus Mo-Bi-W-Ag >2km long anomaly
- Peak of anomaly untested 250m along strike from PNA070 planned for this field season



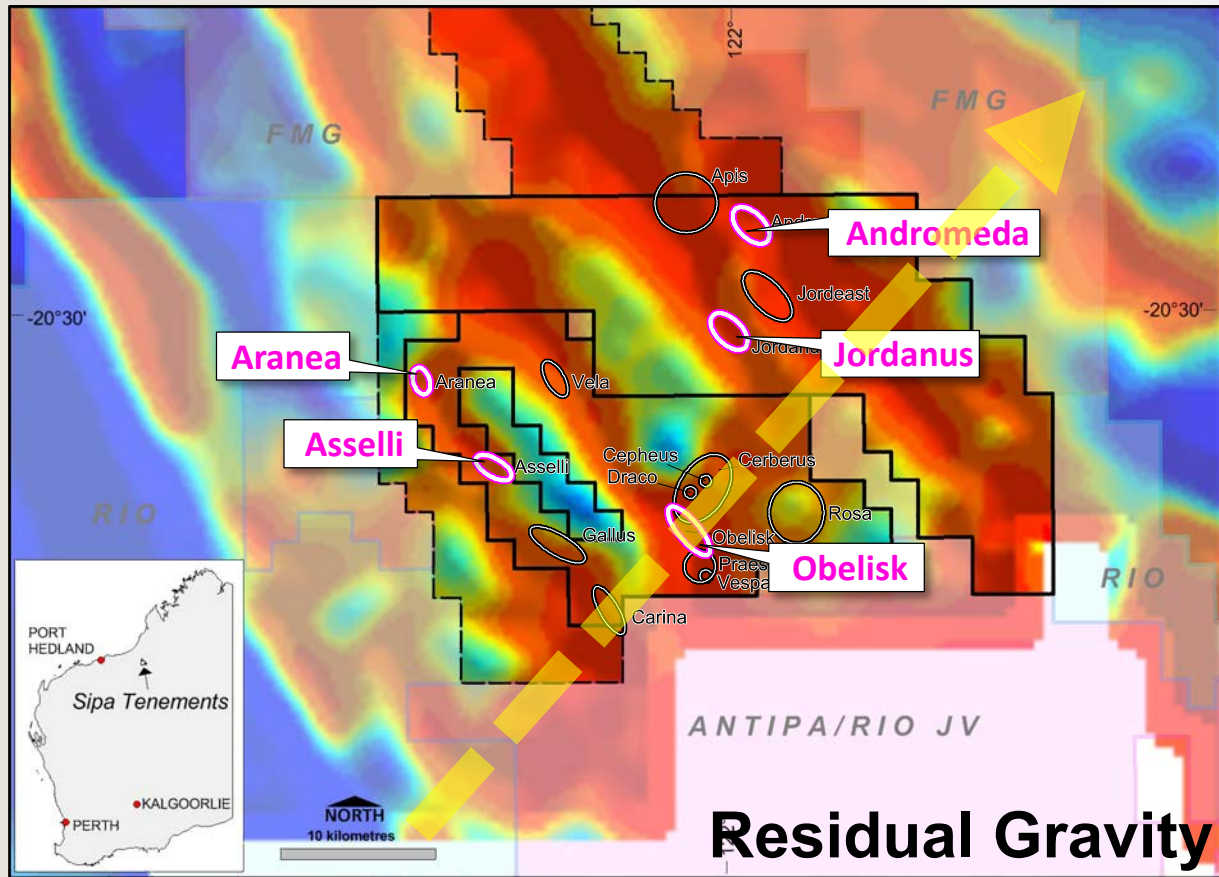
PATERSON NORTH – Regional Targets

- New targets from modelling of geophysics using parameters from 2016-7 exploration
- Ground geophysics to better define drill targets for this field season



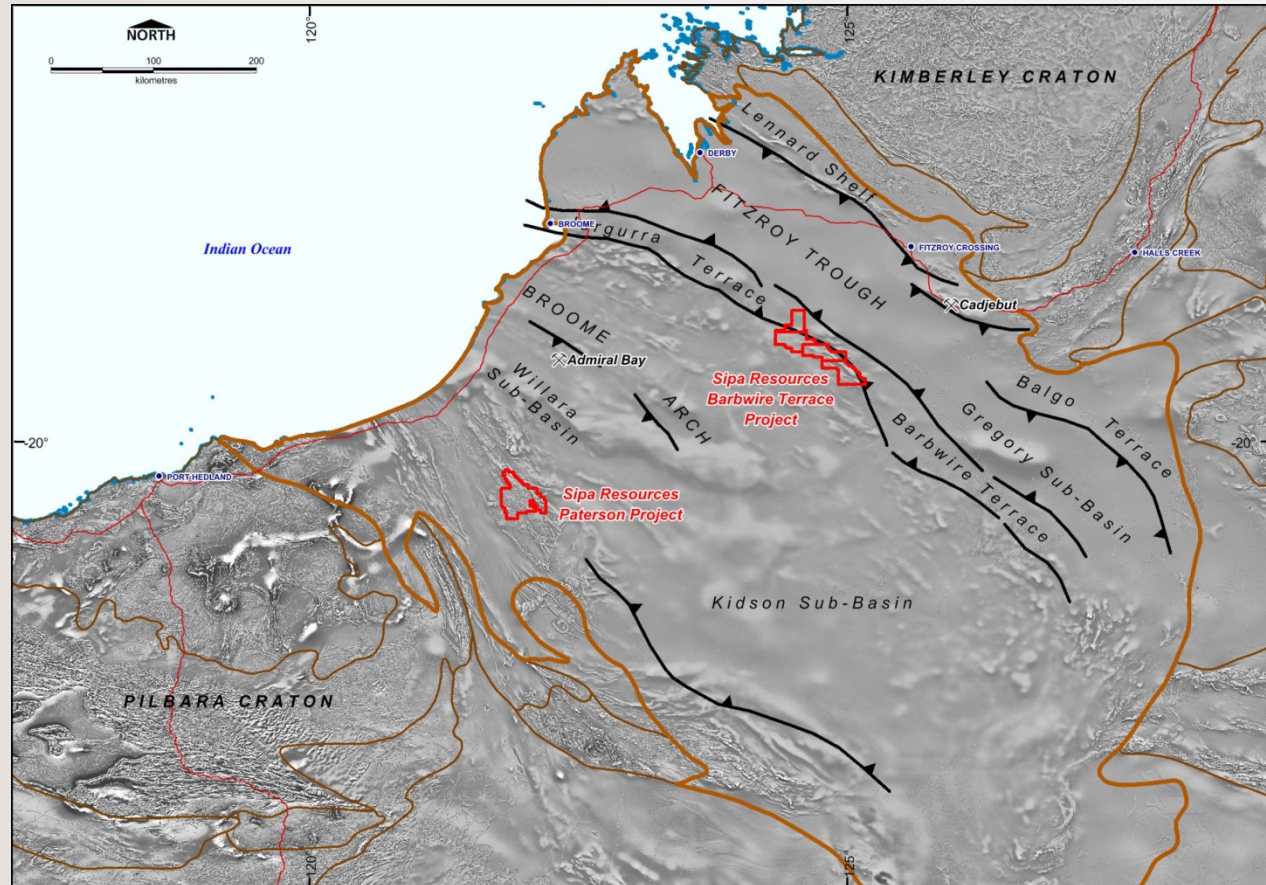
PATERSON NORTH – Regional Targets

- New WA Govt gravity shows large NE structures (yellow arrow) which may be “transfer faults” in addition to NW basin bounding structures



BARBWIRE TERRACE – New Project

- MVT type Zn-Pb
- Explored in 1980s and 1990's by CRAE, BHP, WMC and Pasminco who drilled 35km Zn corridor
- No modern exploration



PLAN FORWARD



Paterson

**AC/RC Drilling currently underway testing
Obelisk, Andromeda, Aranea, Asselli Jordanus.
Drilling under EIS co-funded project grants**

Uganda

**Geochemistry mapping and gravity over 14
nickel targets/intrusions with drill testing later in
2018.**

Barbwire Terrace

Data Compilation on new applications