



SEPTEMBER 2018 ASX : LTR



## AN AUSTRALIAN BATTERY METAL OPPORTUNITY

---

DEFINING LITHIUM AND  
VANADIUM RESOURCES



The Information in this report that relates to the Exploration Results for the Kathleen Valley Project is extracted from ASX announcements entitled "Shallow high-grade lithium mineralisation intersected in initial Phase 2 drill program at Kathleen Valley, WA", "Latest assays confirm continuity of shallow high-grade lithium mineralisation at Kathleen Valley, WA", "Growing resource potential confirmed at Kathleen Valley", "Kathleen Valley emerging as a significant WA lithium discovery with multiple high-grade pegmatites intersected over an extensive area", "Liontown on track for maiden lithium Resource at Kathleen Valley as latest assays confirm continuity and strike extensions of high-grade mineralisation" and "Final assays expand Kathleen Valley lithium deposit ahead of maiden Resource" released on the 5<sup>th</sup>, 19<sup>th</sup>, 26<sup>th</sup> February and 7<sup>th</sup> and 24<sup>th</sup> May 2018 and 2<sup>nd</sup> July 2018 and 6<sup>th</sup> August 2018 respectively which are available on [www.ltresources.com.au](http://www.ltresources.com.au).

The Information in this report that relates to Mineral Resources for the Kathleen Valley Project is extracted from the ASX announcement "Maiden 21 million tonne Lithium-Tantalum Mineral Resource sets strong growth foundation for Liontown at Kathleen Valley" released on the 4<sup>th</sup> September 2018 which is available on [www.ltresources.com.au](http://www.ltresources.com.au).

The Information in this report that relates to the Exploration Results for the Buldania Project is extracted from the ASX announcement entitled "More strong assays confirm significant lithium discovery at Buldania Project in WA" released on the 26<sup>th</sup> March 2018 which is available on [www.ltresources.com.au](http://www.ltresources.com.au).

The Information in this report that relates to Exploration Results for the Toolebuc Vanadium Project is extracted from the ASX announcements entitled "Initial fieldwork confirms outstanding potential of Toolebuc Vanadium Project in Queensland" and "Extensive Vanadium Mineralisation Defined – Toolebuc Project" released on the 4<sup>th</sup> and 23<sup>rd</sup> April 2018 which are available on [www.ltresources.com.au](http://www.ltresources.com.au).

The Information in this report that relates to Mineral Resources for the Toolebuc Vanadium Project is extracted from the ASX announcement "Liontown Announces Maiden 84Mt Vanadium Resource" released on the 30<sup>th</sup> July 2018 which is available on [www.ltresources.com.au](http://www.ltresources.com.au).

The company confirms that it is not aware of any new information or data that materially affects the information included in the original market announcements. The Company confirms that the form and context in which the Competent Persons' findings are presented have not been materially modified from the original market announcement.

This announcement contains forward-looking statements which involve a number of risks and uncertainties. These forward looking statements are expressed in good faith and believed to have a reasonable basis. These statements reflect current expectations, intentions or strategies regarding the future and assumptions based on currently available information. Should one or more of the risks or uncertainties materialise, or should underlying assumptions prove incorrect, actual results may vary from the expectations, intentions and strategies described in this announcement. No obligation is assumed to update forward looking statements if these beliefs, opinions and estimates should change or to reflect other future developments.

# INVESTMENT HIGHLIGHTS



---

THE PROJECTS ARE  
EITHER WHOLLY  
OWNED OR  
LIONTOWN HAS 100%  
OF THE RELEVANT  
MINERAL RIGHTS

---

Three outstanding battery metals project  
located close to established infrastructure

~21Mt Lithium-Tantalum Mineral Resource at  
Kathleen Valley, WA

Second lithium discovery at Buldania near  
Norseman, WA

~84Mt Vanadium Mineral Resource at  
Toolebuc, NW Queensland

~\$3 million in cash will ensure exploration  
momentum is maintained

## Kathleen Valley Lithium Project, Eastern Goldfields, Western Australia

- Maiden Mineral Resource:  
**~21.2Mt @ 1.4% Li<sub>2</sub>O and 170ppm Ta<sub>2</sub>O<sub>5</sub> at a 0.5% Li<sub>2</sub>O cut-off grade**
- 75% of the Mineral Resource is Measured or Indicated
- Metallurgical test work in progress

## Buldania Lithium Project, Norseman, Western Australia

- Significant, new lithium discovery - (up to 58m @ 1.2% Li<sub>2</sub>O)
- Open along strike and at depth
- Follow-up drilling program in progress
- Similar geological setting to the Mt Marion (78Mt) and Bald Hill (26Mt) lithium deposits



## Toolebuc Vanadium Project, NW Queensland

- Maiden Inferred Mineral Resource estimate -  
~84Mt @ 0.30% V<sub>2</sub>O<sub>5</sub>
- Additional Exploration Target# of 100 – 110Mt at an average grade of 0.28% to 0.32% V<sub>2</sub>O<sub>5</sub>
- Low-cost exposure to emerging energy-storage metal

#The potential quantity and grade of the Exploration Target is conceptual in nature as there has been insufficient exploration within these areas to estimate a Mineral Resource and it is uncertain if further exploration will result in the definition of Mineral Resources within these areas.

LIONTOWN IS ONE OF THE FEW JUNIOR EXPLORERS IN AUSTRALIA DRILLING BENEATH OUTCROPPING, FRESH, SPODUMENE-RELATED LITHIUM MINERALISATION



# NEAR TERM OBJECTIVES



## Kathleen Valley Lithium Project

- Complete metallurgical test work (Q3 2018)
- Scoping study (Q4 2018)
- Commence discussions with potential off-take partners

## Buldania Lithium Project

- Complete ~5,000m follow-up drilling (Q3 2018)
- Resource definition drilling (Q4 2018)
- Commence regional exploration over expanded land position

## Toolebuc Vanadium Project

- Extensional drilling (Q3/Q4 2018)
- Metallurgical test work (Q4 2018/Q1 2019)



# KATHLEEN VALLEY LITHIUM PROJECT

---

WESTERN AUSTRALIA

# A SIGNIFICANT NEW, HIGH-GRADE LITHIUM DISCOVERY IN A TIER-1 MINING REGION



## 21.2 million tonne Lithium-Tantalum Mineral Resource

Resource Category	Million Tonnes	Li <sub>2</sub> O %	Ta <sub>2</sub> O <sub>5</sub> ppm
Measured	3.2	1.3	190
Indicated	12.7	1.4	160
Inferred	5.3	1.3	150
Total	21.2	1.4	170



### MAJOR DISCOVERY

- 21.2Mt @ 1.4% Li<sub>2</sub>O and 170ppm Ta<sub>2</sub>O<sub>5</sub> at a 0.5% Li<sub>2</sub>O cut-off grade
- 75% is Measured or Indicated



### READY-TO-GO

- Granted Mining Leases
- Excellent transport, energy and camp infrastructure



### NEXT-STEPS

- Metallurgical test work
  - Scoping Study
- Engage with potential off-take and other strategic partners

# OUTCROPPING HIGH GRADE MINERALISATION ON GRANTED MINING LEASES CLOSE TO ESTABLISHED INFRASTRUCTURE



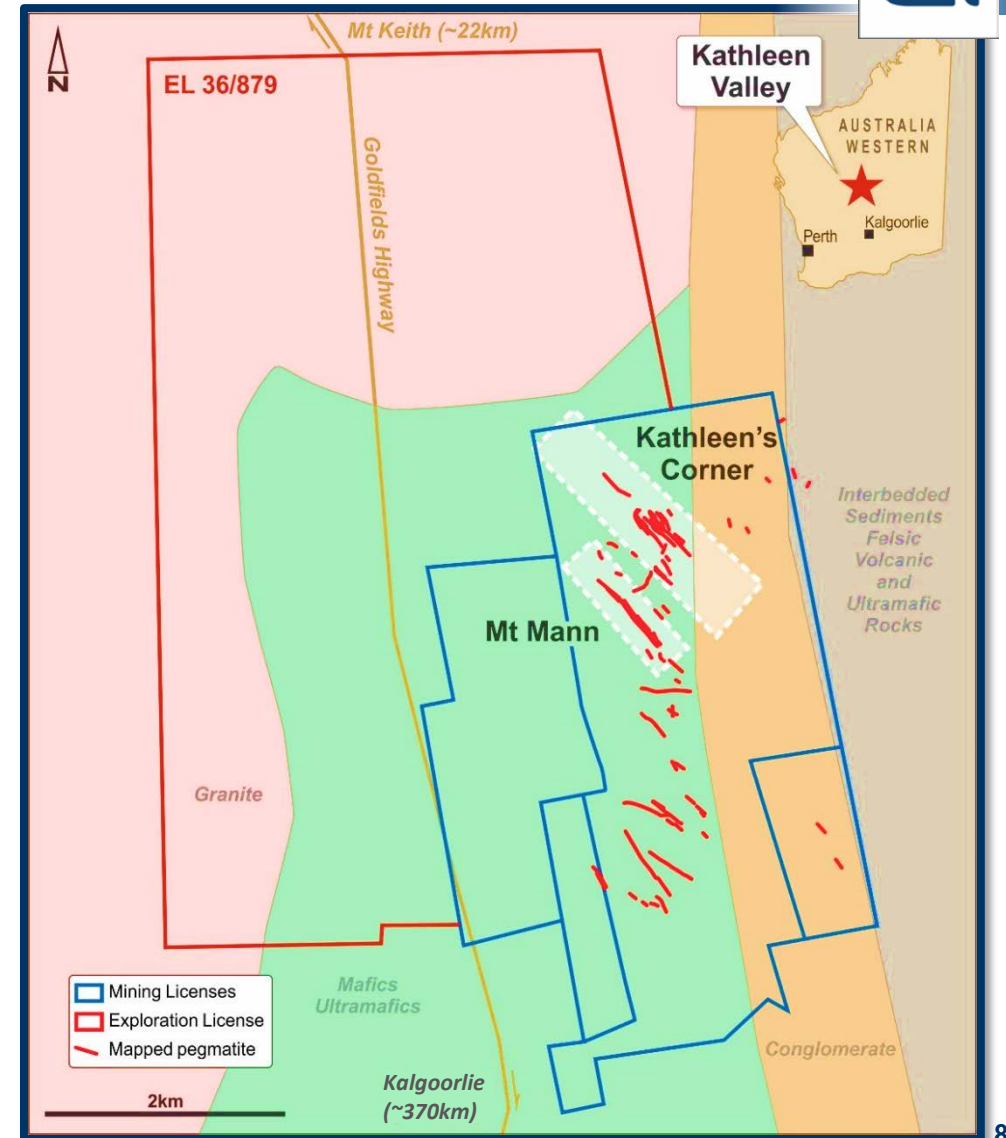
- Two mineralised pegmatite swarms – Kathleen's Corner and Mt Mann
- 18 mineralised pegmatites
- Stacked and predominantly shallowly dipping ( $0-20^{\circ}$ )
- Individually up to 20m thick

## Kathleen's Corner

- >1,100m strike length, >800m down dip (~150m vertical)
- Open along strike and at depth

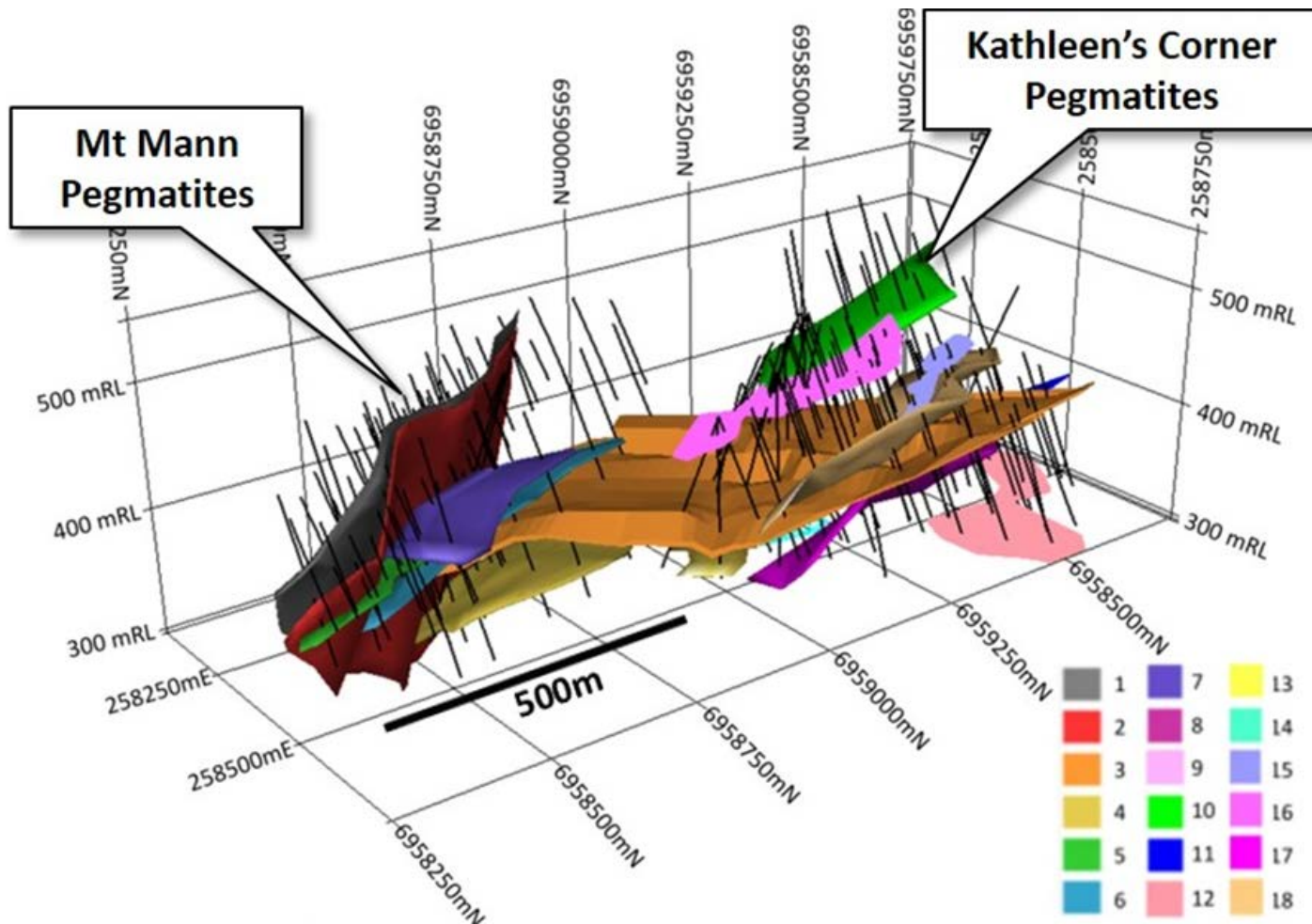
## Mt Mann

- ~650m strike length, ~150m vertical
- Open at depth





# KATHLEEN VALLEY – A LARGE, LITHIUM MINERALISED SYSTEM

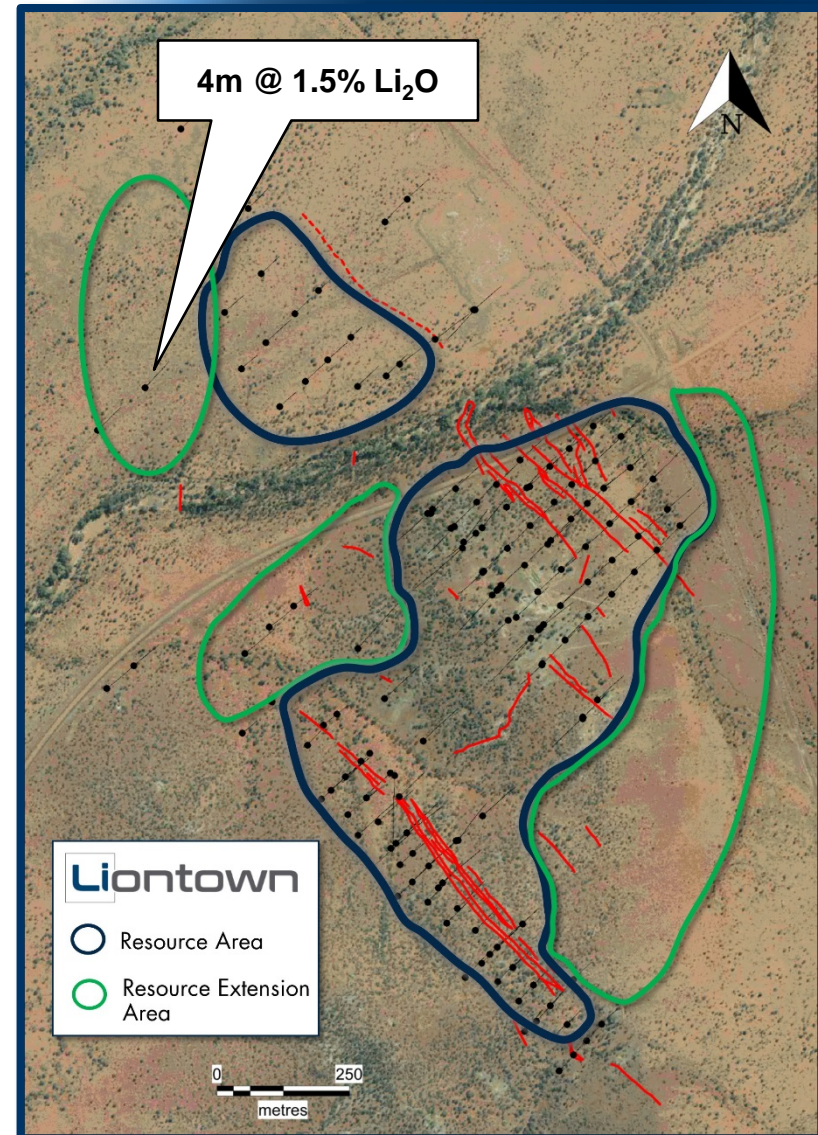


3D views of drill holes and mineralised pegmatites (looking NW)

# RESOURCE REMAINS OPEN ALONG STRIKE AND AT DEPTH – OUTSTANDING POTENTIAL FOR FURTHER GROWTH



- Kathleen's Corner
  - Open along strike and at depth
- Mt Mann
  - Open at depth
- Newly discovered pegmatite intersected by a single drill hole
  - 4m @ 1.5% Li<sub>2</sub>O
- Mineralised system continues northwards under cover
  - No previous drilling





# BULDANIA LITHIUM PROJECT

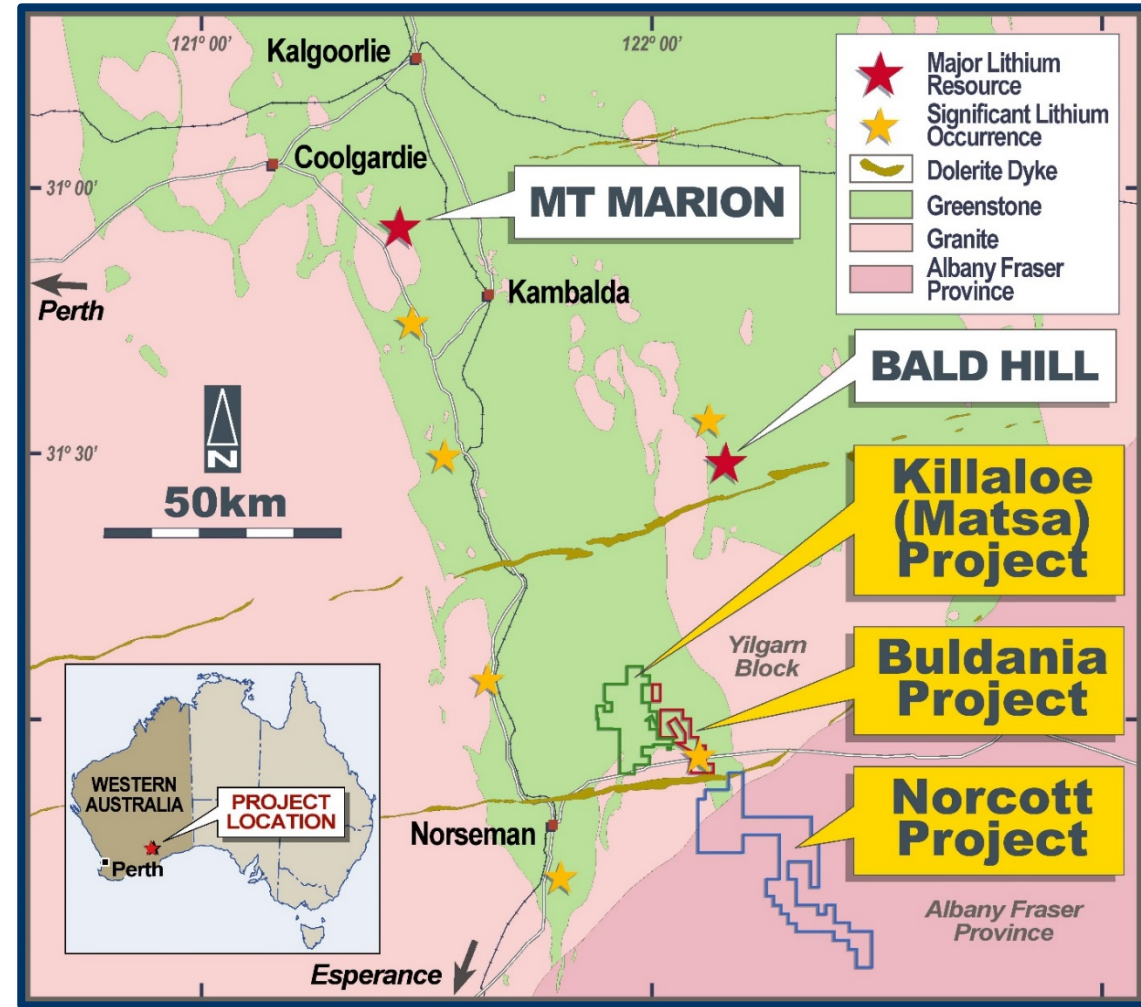
---

WESTERN AUSTRALIA

# BULDANIA IS STRATEGICALLY LOCATED IN A LITHIUM-RICH MINERAL PROVINCE



- Initial drilling intersected mineralised zones more than 50m wide with individual grades up to 2.5%  $\text{Li}_2\text{O}$
- Follow-up drilling in progress
- Similar geological setting to the Mt Marion and Bald Hill lithium deposits (78Mt and 26Mt respectively)
- Good infrastructure – located on Eyre Highway ~30km east of Kalgoorlie-Esperance railway
- Liontown has 100% of the lithium and related metal rights\*



## Significant new lithium discovery

Total land position ~600km<sup>2</sup>

\*Secured via an agreement with Westgold Resources which holds royalty rights

# LARGE SPODUMENE-MINERALISED PEGMATITE INTERSECTED AT THE ANNA PROSPECT



Mineralisation fresh from surface and open along strike and at depth

Initial results include:

BDR0012

25m @ 1.2% Li<sub>2</sub>O (16m)  
*Incl.* 3m @ 2% Li<sub>2</sub>O (22m)  
*Incl.* 5m @ 2% Li<sub>2</sub>O (27m)

BDR0015

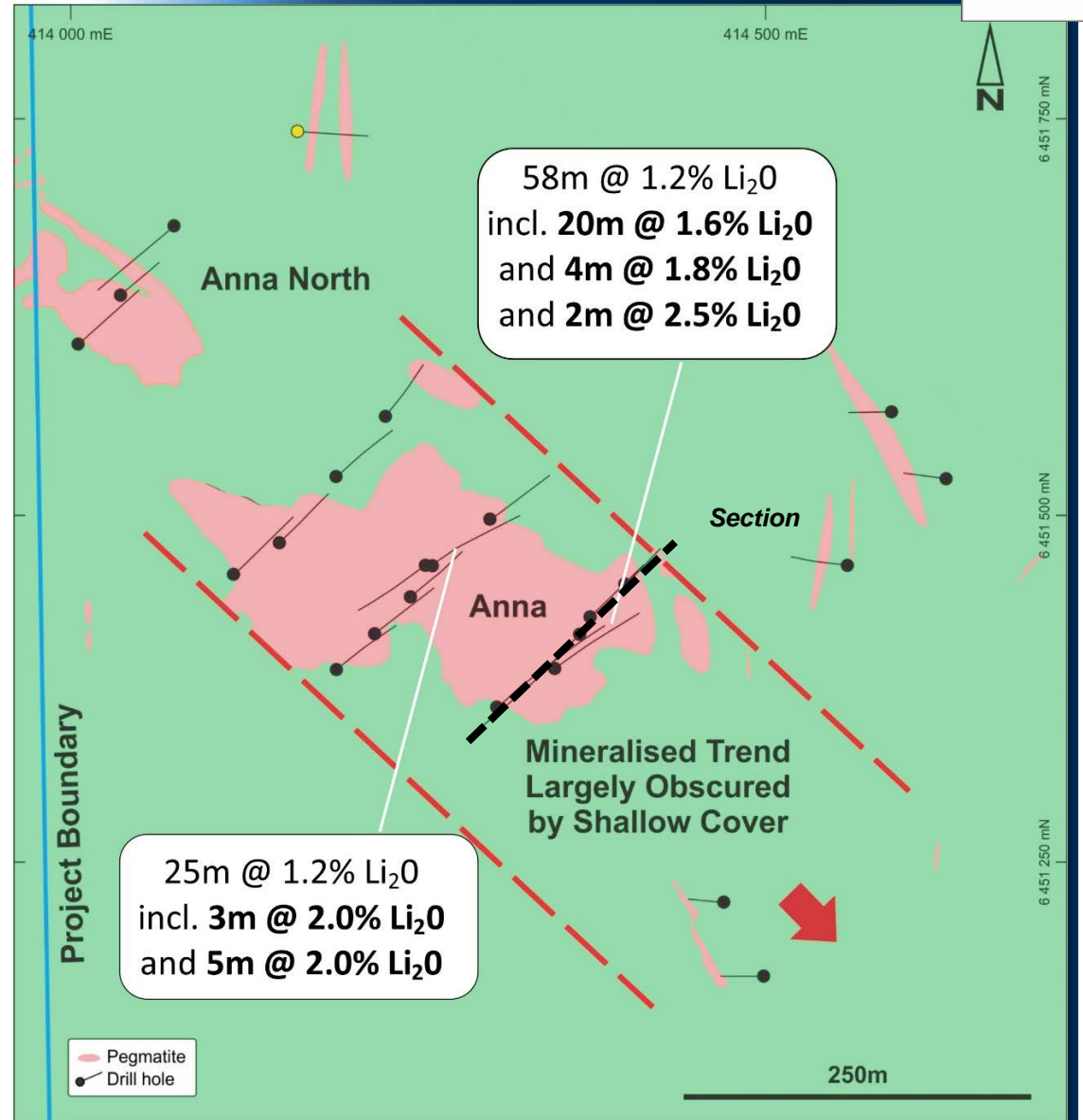
58m @ 1.2% Li<sub>2</sub>O (39m)  
*Incl.* 20m @ 1.6% Li<sub>2</sub>O (40m)  
*Incl.* 4m @ 1.8% Li<sub>2</sub>O (71m)  
*Incl.* 2m @ 2.5% Li<sub>2</sub>O (93m)

BDR0016

36m @ 1% Li<sub>2</sub>O (6m)  
*Incl.* 3m @ 2.0% Li<sub>2</sub>O (12m)  
*Incl.* 6m @ 1.7% Li<sub>2</sub>O (29m)  
*Incl.* 1m @ 1.8% Li<sub>2</sub>O (40m)

BDR0017

15m @ 1.2% Li<sub>2</sub>O (18m)  
*Incl.* 3m @ 2.4% Li<sub>2</sub>O (20m)  
*Incl.* 2m @ 1.7% Li<sub>2</sub>O (27m)

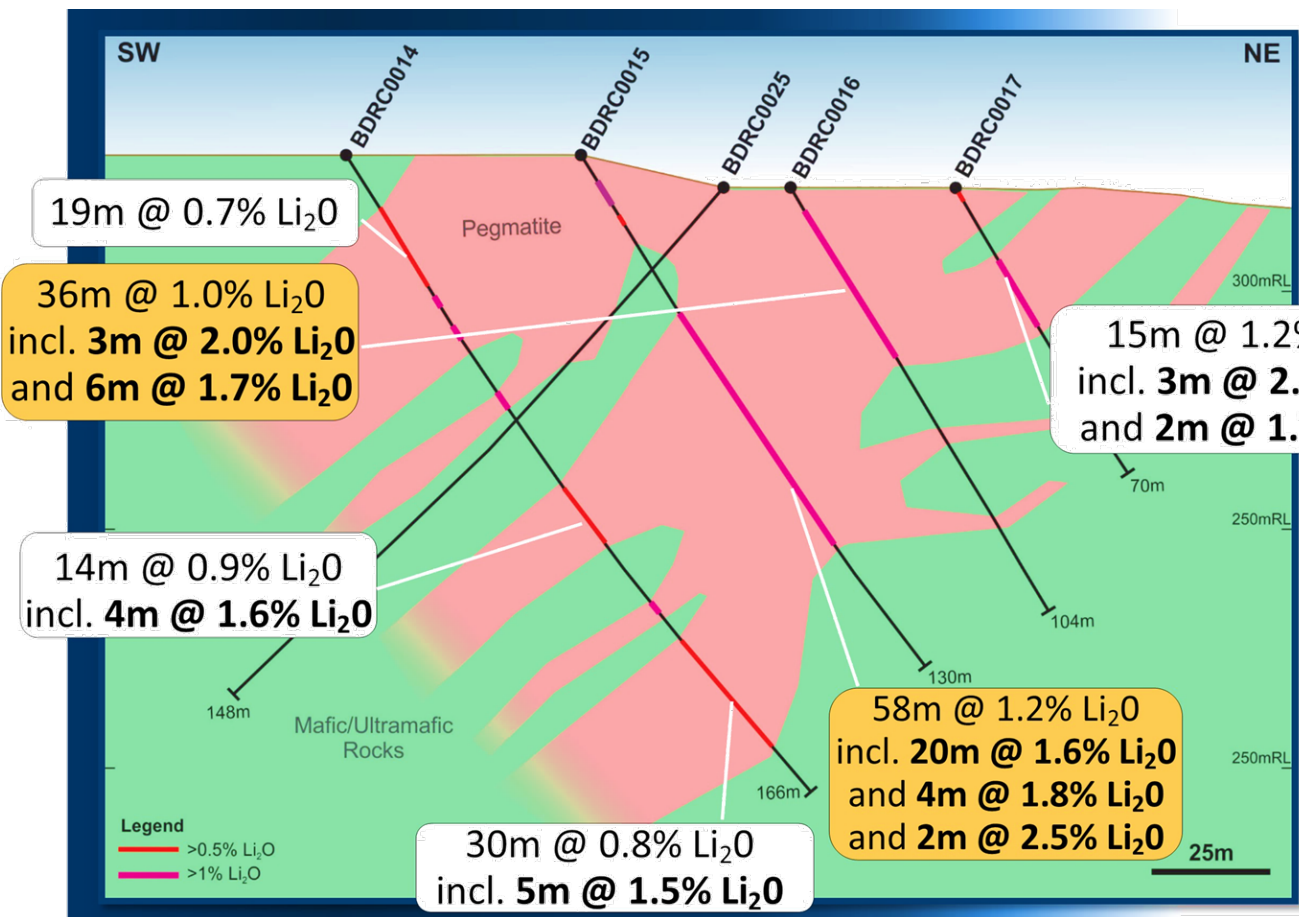


# FOLLOW UP DRILLING TO TARGET EXTENSIONS OF ANNA PEGMATITE



## ANNA

- Thick, shallowly SW dipping pegmatite
- Open at depth and towards southeast beneath shallow cover
- Follow up RC drilling in progress testing for extensions
- Part of regional trend which will also be assessed by the next drilling program



Anna Drill Section

# BULDANIA IS PART OF A LARGE (~600km<sup>2</sup>) STRATEGIC LAND POSITION HIGHLY PROSPECTIVE FOR LITHIUM

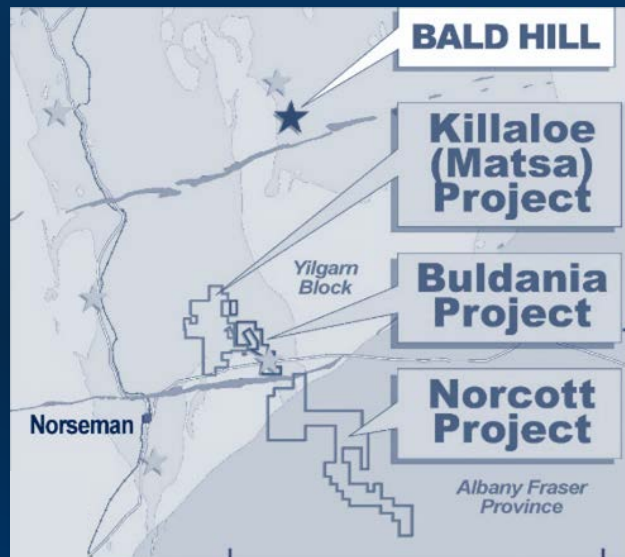


## NORCOTT PROJECT

- 377km<sup>2</sup> area located 4km to the south and along strike of the Buldania Project
- Up to 1.8% Li<sub>2</sub>O recorded from reconnaissance rock chip sampling
- Further geochemical sampling planned

## KILLALOE PROJECT

- Acquired August 2018
- 163km<sup>2</sup> area located immediately west and along strike of the Buldania Project
- Covers ~20km strike length of prospective stratigraphy
- No previous drilling or exploration for lithium





# TOOLEBUC VANADIUM PROJECT

---

QUEENSLAND

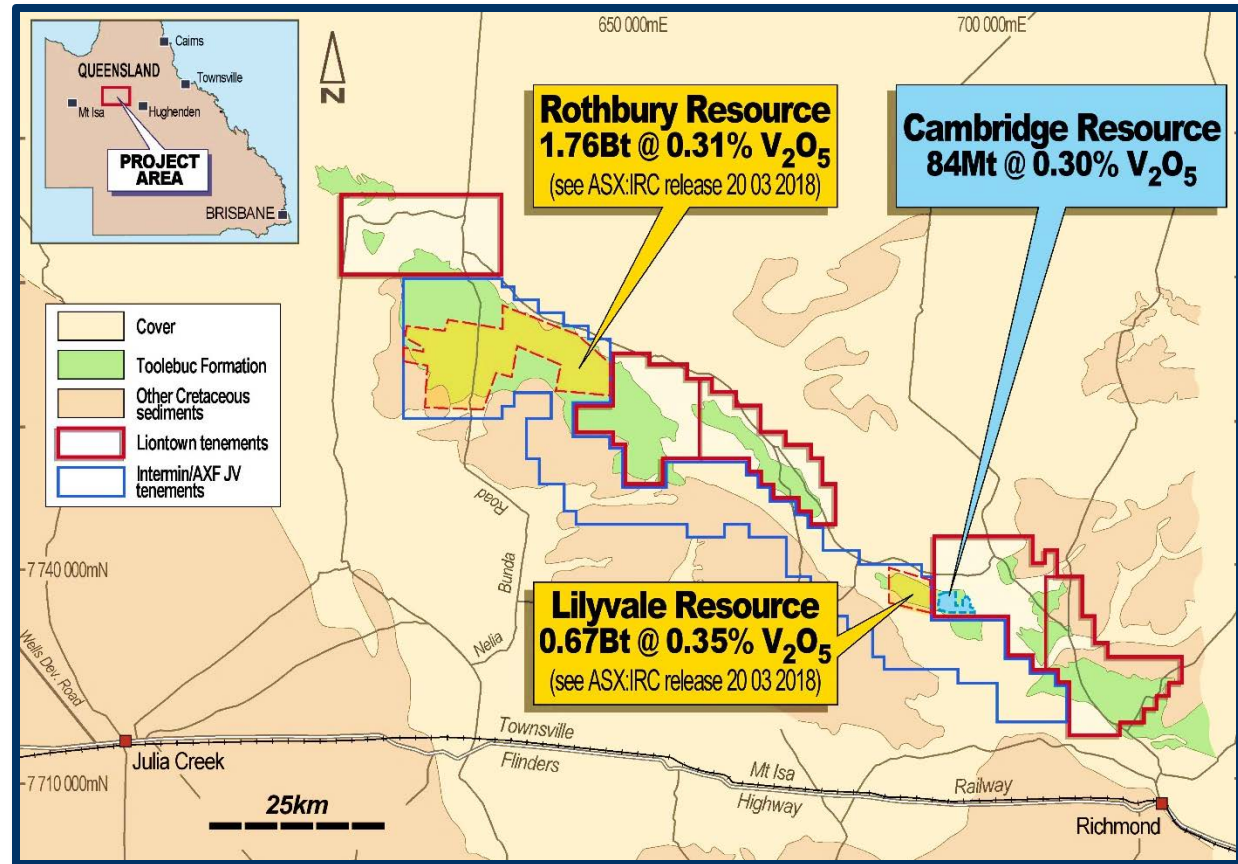


# MAIDEN ~84MT VANADIUM RESOURCE CONFIRMS SIGNIFICANT ADDITION TO BATTERY-METAL PORTFOLIO



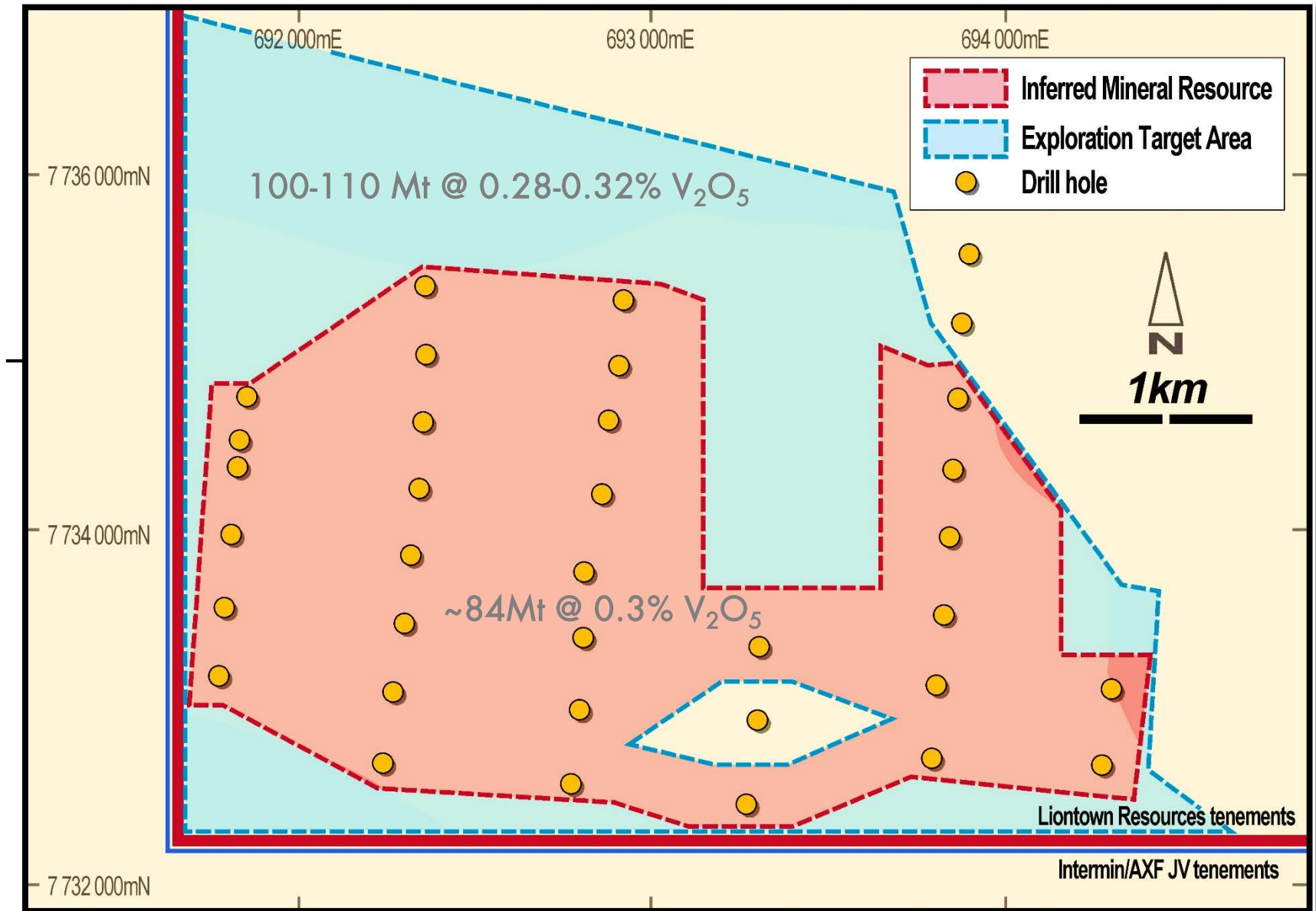
Inferred Mineral Resource estimate -  
~84Mt @ 0.30%  $V_2O_5$

- Additional Exploration Target# of 100 –110Mt @ 0.28% to 0.32%  $V_2O_5$
- Low cost exposure to emerging energy-storage metal
- Project adjoins very large vanadium resources defined by adjacent explorer (Intermin Resources)
- Includes large areas of unexplored, outcropping Toolebuc Formation which hosts the known resources
- Excellent infrastructure close to Townsville – Mt Isa transport links
- 100% owned, ~1,000km<sup>2</sup> area



#The potential grade and tonnage of the exploration target referred to above is conceptual in nature and there has been insufficient exploration to estimate a Mineral Resource. It is uncertain if further exploration will result in the estimation of a Mineral Resource.

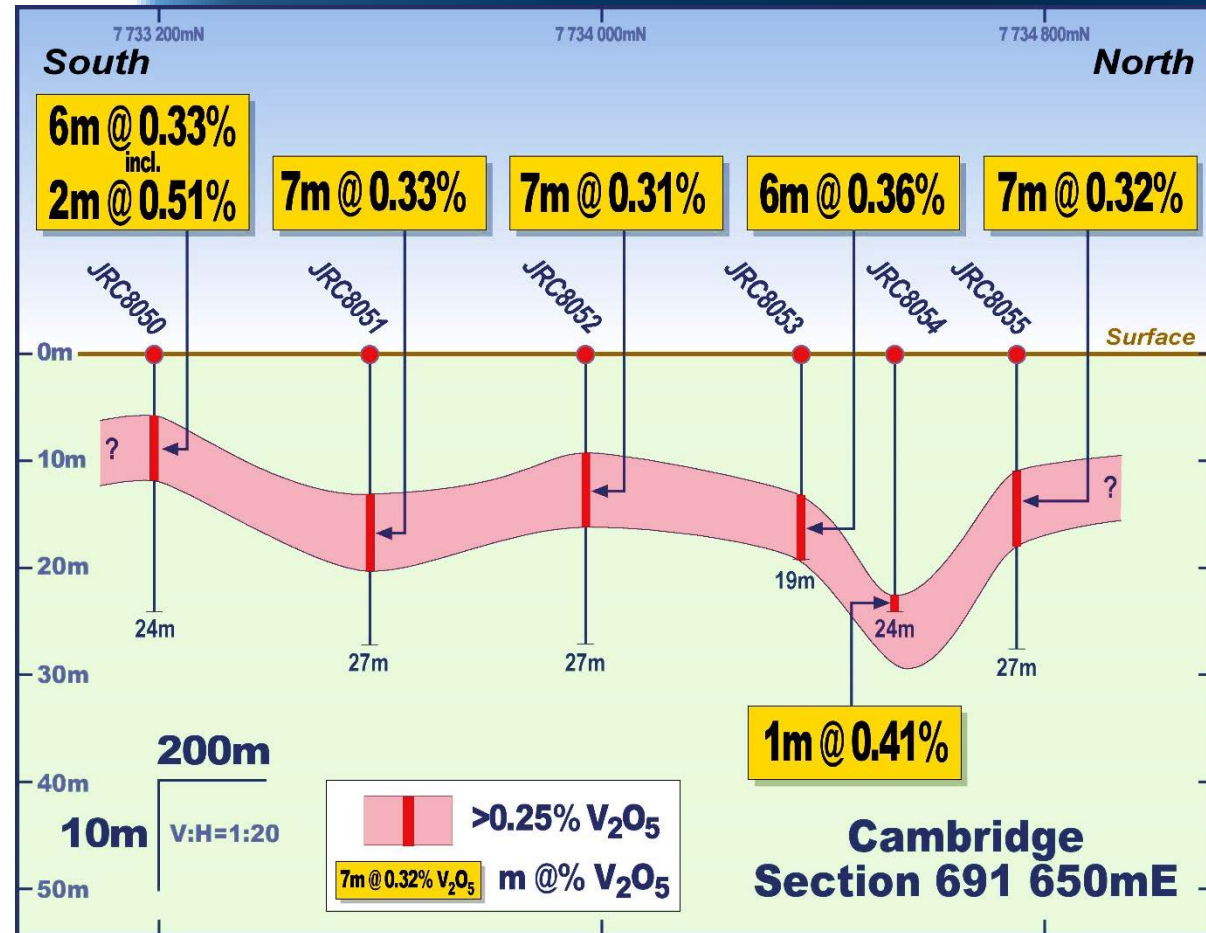
# SIGNIFICANT EXPLORATION UPSIDE ADJACENT TO EXISTING RESOURCE (AND REGIONALLY)



# VANADIUM MINERALISATION IS SHALLOW (<20m), SOFT AND CLOSE TO INFRASTRUCTURE



- Located immediately east of the 671Mt Lilyvale Mineral Resource of Intermin Resources' (ASX:IRC)\*
- 5km x 3km mineralised zone, open to the north and east
- Grades and widths similar to Lilyvale Mineral Resource
- Extensional drilling planned for Q3 2018
- Further metallurgical test work planned for Q4 2018

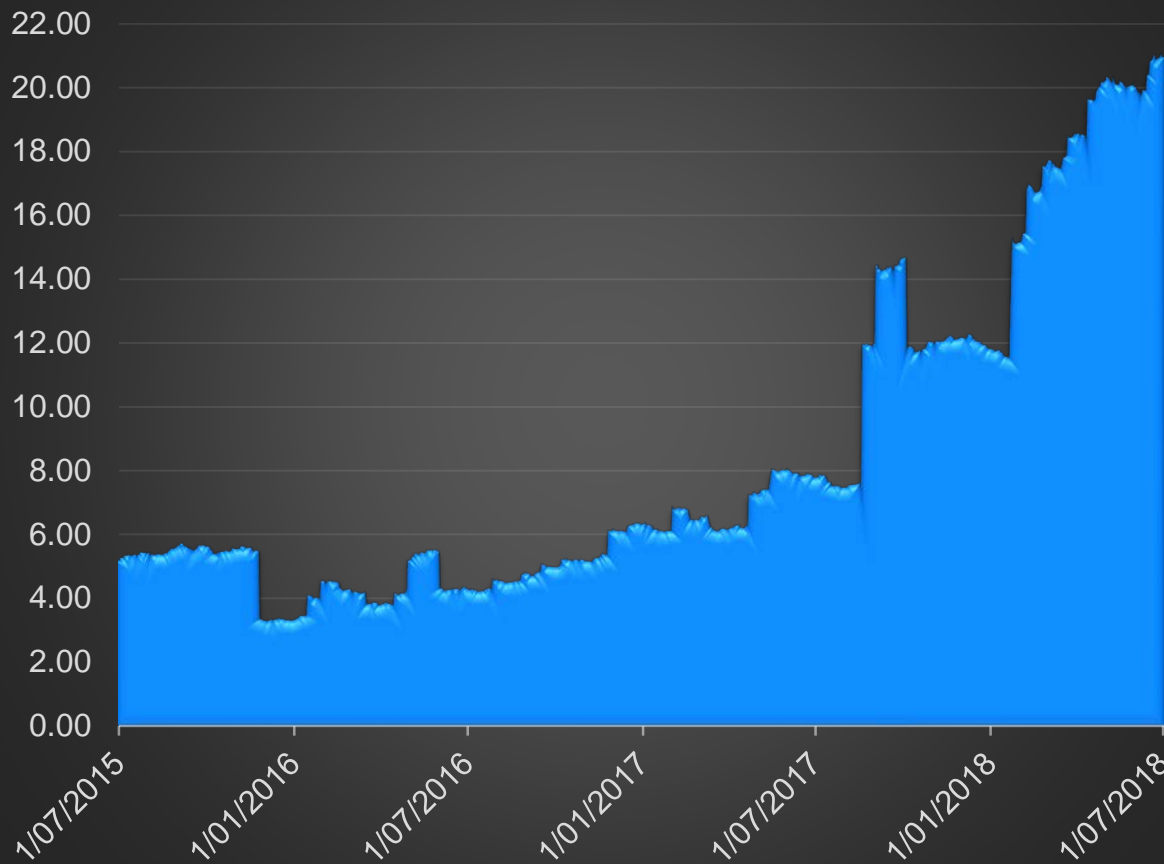


\*See Intermin Resources (ASX:IRC) ASX release dated 20 March 2018

# VANADIUM IS A RELATIVE NEW COMER TO THE BATTERY METALS SPACE IN THE EMERGING LARGE SCALE ENERGY STORAGE INDUSTRY



VANADIUM PRICE (WEEKLY), AUD\$/LB



- 300% increase in price since 2017 and tipped to be the 'metal to watch' in 2018<sup>1</sup>
- Use and price underpinned by steel industry (~92% of current usage)
- Emerging Vanadium Flow Battery (VFB) market predicted to put pressure on supply
- Commercial VFBs already installed world wide

# INVESTMENT HIGHLIGHTS

High grade lithium resource  
announced at Kathleen Valley

New lithium discovery at Buldania

Advanced vanadium project close to  
established infrastructure

~\$3 million in cash will ensure  
momentum is maintained

---

THE PROJECTS ARE  
EITHER WHOLLY  
OWNED OR  
LIONTOWN HAS 100%  
OF THE RELEVANT  
MINERAL RIGHTS

---

# Liontown



**EMAIL**  
info@ltresources.com.au



**WEBSITE:**  
[www.ltresources.com.au](http://www.ltresources.com.au)



**OFFICE**  
Level 2, 1292 Hay St  
West Perth WA 6005



**PHONE NUMBER**  
08 9322 7431

CONNECT



<https://au.linkedin.com/company/liontown-resources-limited>



<https://twitter.com/LiontownRes>



---

# APPENDIX

---

# A PROVEN, EXPERIENCED TEAM



**DAVID RICHARDS**  
Managing Director

Former Senior Geologist - Battle Mountain (discovered multi-million ounce Vera Nancy gold deposits), Regional Exploration Manager – Delta and Managing Director – Glengarry Resources



**TIM GOYDER**  
Chairman

+40 years experience, Executive Chairman – Chalice Gold Mines, Chairman – DevEx Resources, Non-Executive Director – Strike Energy



**CRAIG WILLIAMS**  
Non-Executive Director

+40 years experience, Chairman Orecorp Ltd, co-founder and former CEO – Equinox Minerals



**ANTHONY CIPRIANO**  
Non-Executive Director

+30 years experience, former partner at Deloitte, Chartered Accountant

## CORPORATE SNAPSHOT

ASX CODE	LTR
SHARES ON ISSUE	~1103M
MARKET CAPITALISATION	\$30.9M (AT ~2.8CPS)
MAJOR SHAREHOLDER	TIM GOYDER – 20.5%
TOP 20 SHAREHOLDERS	51.5%
CASH	~\$3M



# KATHLEEN VALLEY RC DRILLING STATISTICS



Hole_ID	East	North	RL	Dip	Azimuth	Depth (m)	Significant Li2O (>0.4%) and Ta2O5 (>50ppm) results					Prospect
							From(m)	To(m)	Interval(m)	Li2O (%)	Ta2O5 (ppm)	
KVRC0001	258306	6958744	500	-60	45	65	3	6	3	1	122	Mt Mann
							10	11	1	1.1	85	
							16	17	1	1.1	94	
KVRC0002	258379	6958675	500	-60	225	109	0	13	13	1.6	114	Mt Mann
							incl. 9m @ 1.9% Li2O and 107ppm Ta2O5 from 2m					
							26	29	3	1.3	101	
							35	36	1	1.6	127	
							83	96	13	1.6	111	
KVRC0003	258395	6958690	500	-59	225	155	91	105	14	1.7	163	Mt Mann
							incl. 8m @ 2% Li2O and 130ppm Ta2O5 from 92m					
KVRC0004	258348	6958645	500	-50	45	89	36	38	2	1	99	Mt Mann
							45	56	11	1.2	100	
KVRC0005	258276	6958707	500	-53	40	89	incl. 3m @ 1.8% Li2O and 106ppm Ta2O5 from 45m					Mt Mann
							32	34	2	1.3	112	
KVRC0006	258433	6958654	500	-50	227.5	80	39	40	1	1.5	132	Mt Mann
							37	43	6	1.1	153	
KVRC0007	258452	6959426	500	-47	45	132	29	35	6	1.4	170	Kathleens Corner
							incl. 3m @ 1.9% Li2O and 166ppm Ta2O5 from 30m					
							39	40	1	1.1	198	
							124	125	1	2.4	302	
KVRC0008	258512	6959469	500	-50	55	130	81	82	1	1.2	310	Kathleens Corner
							95	96	1	1	124	
KVRC0009	258590	6959528	500	-50	45	113	57	59	2	0.7	248	Kathleens Corner
							70	71	1	0.6	266	
KVRC0010	258593	6959527	500	-50	225	130	83	85	2	1.1	211	Kathleens Corner
							91	92	1	1.4	239	
							100	106	6	1.2	284	
KVRC0011	258208	6958788	500	-50	45	89	24	25	1	1	112	Kathleens Corner
KVRC0012	258154	6958729	500	-55	45	65	No significant assays					Kathleens Corner
KVRC0013	258205	6958930	500	-50	45	108	No significant assays					Kathleens Corner
KVRC0014	258157	6958881	500	-50	45	113	12	17	5	0	240	Mt Mann
							135	193	58	1.2	156	
							incl. 9m @ 1.8% Li2O and 220ppm Ta2O5 from 141m and 13m @ 2.0% Li2O and 138ppm Ta2O5 from 67m and					
							206	230	24	1.3	139	
							incl. 3m @ 1.6% Li2O and 105ppm Ta2O5 from 208m and 2m @ 2.6% Li2O and 271ppm Ta2O5 from 217m and 4m @ 1.6% Li2O and 145ppm Ta2O5 from 226m and					
KVRC0016	258331	6958764	500	-50	45	40	No significant assays					Mt Mann
KVRC0017	257899	6958809	500	-50	45	119	63	65	2	1.3	212	Mt Mann
KVRC0018	257951	6958853	500	-50	45	101	1	2	1	1.4	93	Mt Mann
KVRC0019	258252	6958969	500	-50	45	89	No significant assays					Mt Mann

Hole_ID	East	North	RL	Dip	Azimuth	Depth (m)	Significant Li2O (>0.4%) and Ta2O5 (>50ppm) results					Prospect
							From(m)	To(m)	Interval(m)	Li2O (%)	Ta2O5 (ppm)	
KVRC0020	258702	6958251	532	-60	45	80	26	48	22	1.2	170	Mt Mann
							incl. 5m @ 1.7% Li2O and 126ppm Ta2O5 from 26m incl. 10m @ 1.6% Li2O and 244ppm Ta2O5 from 34m					
							65	75	10	0.9	179	
KVRC0021	258675	6958223	535	-55	45	140	incl. 7m @ 1.1% Li2O and 205ppm Ta2O5 from 68m					Mt Mann
							85	88	3	0.8	305	
							incl. 1m @ 1.3% Li2O and 277ppm Ta2O5 from 86m					
							103	106	3	1.5	237	
KVRC0022	258735	6958215	528	-55	45	80	incl. 2m @ 1.8% Li2O and 246ppm Ta2O5 from 103m					Mt Mann
							20	30	10	1.3	199	
KVRC0023	258708	6958186	529	-55	45	100	incl. 6m @ 1.7% Li2O and 209ppm Ta2O5 from 24m					Mt Mann
							52	58	6	1.5	260	
KVRC0024	258665	6958285	543	-55	45	112	incl. 5m @ 1.7% Li2O and 246ppm Ta2O5 from 53m					Mt Mann
							18	33	15	1.4	139	
							incl. 11m @ 1.6% Li2O and 132ppm Ta2O5 from 20m					
KVRC0025	258636	6958260	544	-55	45	160	49	51	2	0.7	141	Mt Mann
							93	98	5	0.8	173	
							61	75	14	1.6	121	
							incl. 13m @ 1.7% Li2O and 122ppm Ta2O5 from 61m					
							84	85	1	1.7	106	
							103	107	4	1.5	187	
KVRC0026	258564	6958396	535	-55	45	120	incl. 2m @ 2.5% Li2O and 218ppm Ta2O5 from 104m					Mt Mann
							incl. 2m @ 2.0% Li2O and 246ppm Ta2O5 from 123m					
							119	127	8	1.0	197	
							incl. 8m @ 1.8% Li2O and 147ppm Ta2O5 from 35m					
							58	61	3	1.2	93	
KVRC0027	258535	6958367	534	-55	45	160	80	82	2	1.5	375	Mt Mann
							incl. 1m @ 2.5% Li2O and 398ppm Ta2O5 from 81m					
							98	100	2	1	291	
							65	78	13	1.6	120	
KVRC0028	258504	6958477	525	-55	45	120	incl. 6m @ 2% Li2O and 112ppm Ta2O5 from 69m					Mt Mann
							93	97	4	1.5	161	
							101	105	4	0.7	204	
							129	135	6	0.8	107	
KVRC0029	258472	6958448	525	-55	45	196	30	39	9	1.5	133	Mt Mann
							incl. 5m @ 1.9% Li2O and 133ppm Ta2O5 from 32m					
							51	56	5	1.7	80	
							95	97	2	1.4	350	
							75	85	10	1.8	170	
							incl. 7m @ 2.2% Li2O and 154ppm Ta2O5 from 77m					
97	106	9	1.2	110								
KVRC0029	258472	6958448	525	-55	45	196	incl. 3m @ 1.7% Li2O and 89ppm Ta2O5 from 98m					Mt Mann
							125	133	8	1.4	251	
							incl. 2m @ 2% Li2O and 300ppm Ta2O5 from 126m					
							incl. 2m @ 1.8% Li2O and 252ppm Ta2O5 from 129m					
							176	177	1	1.1	74	
							182	188	6	1.9	128	
							incl. 4m @ 2.4% Li2O and 135ppm Ta2O5 from 183m					
193	196	3	1	118								

# KATHLEEN VALLEY RC DRILLING STATISTICS (CONTD)



Hole_ID	East	North	RL	Dip	Azimuth	Depth (m)	Significant Li2O (>0.4%) and Ta2O5 (>50ppm) results					Prospect
							From(m)	To(m)	Interval(m)	Li2O (%)	Ta2O5 (ppm)	
KVRC0030	258464	6958540	520	-55	45	140	16	25	9	1.6	118	Mt Mann
							incl. 6m @ 2% Li2O and 124ppm Ta2O5 from 18m					
							37	44	7	1.1	80	
							incl. 3m @ 1.8% Li2O and 123ppm Ta2O5 from 40m					
							99	103	4	0.9	331	
							113	117	4	1.3	492	
KVRC0031	258435	6958512	521	-55	45	160	52	61	9	1.7	126	Mt Mann
							incl. 6m @ 2% Li2O and 121ppm Ta2O5 from 54m					
							85	93	8	1.4	99	
							incl. 4m @ 1.8% Li2O and 113ppm Ta2O5 from 87m					
							106	110	4	2	312	
							116	118	2	1.5	268	
KVRC0032	258426	6959404	511	-55	45	100	39	44	5	1.6	124	Kathleens Corner
							incl. 3m @ 2.1% Li2O and 150ppm Ta2O5 from 40m					
							67	68	1	1.3	197	
KVRC0033	258802	6959298	513	-55	45	140	6	9	3	0.9	223	Kathleens Corner
							incl. 2m @ 2.2% Li2O and 167ppm Ta2O5 from 54m					
							52	57	5	1.2	157	
KVRC0034	258653	6959155	518	-55	45	120	114	118	4	1.2	152	Kathleens Corner
							18	19	1	0.6	112	
							21	24	3	1.5	156	
							incl. 2m @ 1.9% Li2O and 187ppm Ta2O5 from 22m					
							53	55	2	0.9	177	
							60	64	4	1.4	160	
							incl. 2m @ 2% Li2O and 236ppm Ta2O5 from 61m					
							68	70	2	1.2	123	
							78	95	17	1.4	161	
							incl. 4m @ 2% Li2O and 268ppm Ta2O5 from 79m					
incl. 4m @ 2.3% Li2O and 162ppm Ta2O5 from 90m												
KVRC0035	258694	6959195	516	-55	45	120	106	108	2	0.8	453	Kathleens Corner
							112	114	2	1.4	203	
							incl. 1m @ 1.7% Li2O and 195ppm Ta2O5 from 112m					
							37	40	3	1.1	252	
							47	49	2	1.9	225	
							52	54	2	1.2	201	
							incl. 1m @ 1.9% Li2O and 283ppm Ta2O5 from 53m					
							71	92	21	1.9	201	
							incl. 17m @ 2.2% Li2O and 220ppm Ta2O5 from 74m					
							101	103	2	0.9	273	
KVRC0036	258733	6959232	514	-55	45	140	108	110	2	1.3	94	Kathleens Corner
							14	17	3	1.1	247	
							23	24	1	2.2	375	
							54	56	2	1.6	164	
							incl. 1m @ 2.2% Li2O and 105ppm Ta2O5 from 55m					
							69	73	4	1.7	255	
							incl. 2m @ 2.5% Li2O and 328ppm Ta2O5 from 70m					
							76	77	1	0.8	107	
							101	103	2	0.7	186	
							115	119	4	1	223	

Hole_ID	East	North	RL	Dip	Azimuth	Depth (m)	Significant Li2O (>0.4%) and Ta2O5 (>50ppm) results					Prospect
							From(m)	To(m)	Interval(m)	Li2O (%)	Ta2O5 (ppm)	
KVRC0037	258730	6959085	516	-55	45	120	15	19	4	1.1	303	Kathleens Corner
							63	77	14	1.7	168	
							incl. 2m @ 2.5% Li2O and 103ppm Ta2O5 from 64m					
							incl. 7m @ 2.1% Li2O and 214ppm Ta2O5 from 69m					
							83	87	4	1.3	107	
							incl. 2m @ 2% Li2O and 184ppm Ta2O5 from 85m					
KVRC0038	258774	6959131	514	-55	45	120	37	42	5	1	178	Kathleens Corner
							incl. 2m @ 1.8% Li2O and 198ppm Ta2O5 from 38m					
							58	64	6	0.7	129	
							76	85	9	1.7	255	
							incl. 4m @ 2.5% Li2O and 292ppm Ta2O5 from 77m					
							100	102	2	0.6	233	
KVRC0039	258803	6959163	513	-55	45	120	8	16	8	1.1	131	Kathleens Corner
							incl. 3m @ 1.6% Li2O and 173ppm Ta2O5 from 10m					
							45	49	4	1.3	204	
							incl. 2m @ 1.7% Li2O and 243ppm Ta2O5 from 46m					
							85	90	5	1.9	143	
							incl. 3m @ 2.3% Li2O and 138ppm Ta2O5 from 86m					
KVRC0040	258836	6959192	512	-55	45	140	37	39	2	0.7	191	Kathleens Corner
							115	123	8	1.1	176	
							incl. 2m @ 2.1% Li2O and 157ppm Ta2O5 from 115m					
							126	127	1	1.6	206	
							107	118	11	1.6	120	
							incl. 6m @ 1.9% Li2O and 123ppm Ta2O5 from 111m					
KVRC0041	258398	6958475	524	-60	52	220	149	159	10	0.8	139	Mt Mann
							incl. 2m @ 1.8% Li2O and 136ppm Ta2O5 from 156m					
							183	197	14	1.6	83	
							incl. 6m @ 2.1% Li2O and 100ppm Ta2O5 from 185m					
							and 2m @ 2.2% Li2O and 113ppm Ta2O5 from 194m					
							95	103	8	1.4	121	
KVRC0042	258373	6958534	519	-60	49	200	incl. 4m @ 1.9% Li2O and 124ppm Ta2O5 from 98m					Mt Mann
							120	130	10	1.1	119	
							incl. 2m @ 1.6% Li2O and 161ppm Ta2O5 from 124m					
							172	180	8	1.5	137	
KVRC0043	258815	6959306	512	-55	53	120	incl. 4m @ 1.9% Li2O and 138ppm Ta2O5 from 173m					Kathleens Corner
							34	37	3	1.5	215	
							83	84	1	1.1	906	
							43	47	4	1.5	129	
KVRC0044	258605	6959116	519	-54	40	150	incl. 3m @ 1.8% Li2O and 155ppm Ta2O5 from 44m					Kathleens Corner
							65	80	15	1.1	204	
							incl. 1m @ 2.4% Li2O and 287ppm Ta2O5 from 72m					
							incl. 2m @ 2.4% Li2O and 250ppm Ta2O5 from 76m					
							102	109	7	1.6	225	
							incl. 5m @ 1.9% Li2O and 238ppm Ta2O5 from 102m					
							114	116	2	0.9	118	
							122	124	2	1.2	273	
							127	131	4	1	172	
							incl. 1m @ 2% Li2O and 181ppm Ta2O5 from 128m					
138	140	2	1.5	266								

# KATHLEEN VALLEY RC DRILLING STATISTICS (CONTD)



Hole_ID	East	North	RL	Dip	Azimuth	Depth (m)	Significant Li2O (>0.4%) and Ta2O5 (>50ppm) results					Prospect
							From(m)	To(m)	Interval(m)	Li2O (%)	Ta2O5 (ppm)	
KVR00045	258571	6959089	521	-59	38	150	65	69	4	1.6	149	Kathleens Corner
							incl. 3m @ 1.9% Li2O and 173ppm Ta2O5 from 65m					
							84	94	10	1.6	287	
							incl. 5m @ 2.3% Li2O and 317ppm Ta2O5 from 85m					
							114	133	19	1.1	131	
							incl. 2m @ 2.1% Li2O and 236ppm Ta2O5 from 116m					
							and 2m @ 2.4% Li2O and 98ppm Ta2O5 from 130m					
KVR00046	258887	6959230	512	-54	48	93	28	31	3	1.7	191	
							incl. 1m @ 2.5% Li2O and 190ppm Ta2O5 from 29m					
							34	36	2	0.9	307	
KVR00047	258688	6959048	520	-56	46	200	76	85	9	1.5	206	
							incl. 3m @ 2% Li2O and 128ppm Ta2O5 from 77m					
							and 1m @ 2.3% Li2O and 234ppm Ta2O5 from 83m					
							88	90	2	1.3	260	
							100	102	2	2.5	173	
							132	136	4	1.2	180	
							incl. 1m @ 2% Li2O and 314ppm Ta2O5 from 133m					
							45	48	3	1.5	214	
KVR00048	258645	6959011	522	-55	47	120	85	99	14	1.6	236	
							incl. 9m @ 2% Li2O and 230ppm Ta2O5 from 87m					
KVR00049	258957	6959148	513	-57	47	120	109	113	4	1.4	200	
							incl. 1m @ 2.1% Li2O and 176ppm Ta2O5 from 109m					
KVR00050	258904	6959102	514	-56	49	120	and 1m @ 1.7% Li2O and 183ppm Ta2O5 from 111m					
							5	7	2	1.1	84	
							31	34	3	1	135	
							100	108	8	1	123	
KVR00051	258855	6959056	516	-57	51	121	incl. 2m @ 2.1% Li2O and 146ppm Ta2O5 from 100m					
							13	17	4	0.9	114	
							incl. 1m @ 1.7% Li2O and 159ppm Ta2O5 from 14m					
							21	23	2	1.6	130	
							incl. 1m @ 2% Li2O and 179ppm Ta2O5 from 21m					
							28	30	2	1.7	161	
KVR00052	258807	6959015	515	-55	48	120	48	52	4	1.6	131	
							incl. 2m @ 2.2% Li2O and 145ppm Ta2O5 from 48m					
							108	114	6	0.8	153	
							incl. 1m @ 2.2% Li2O and 238ppm Ta2O5 from 111m					
							80	86	6	1.5	162	
							incl. 3m @ 2.2% Li2O and 160ppm Ta2O5 from 81m					
KVR00053	258757	6958966	519	-56	49	120	68	73	5	1.6	183	
							incl. 1m @ 2% Li2O and 233ppm Ta2O5 from 72m					
							78	80	2	1	226	
							106	115	9	1.7	126	
							incl. 6m @ 2.2% Li2O and 132ppm Ta2O5 from 108m					
KVR00054	258717	6958930	522	-57	52	160	27	30	3	0.9	263	
							71	87	16	1.6	185	
							incl. 2m @ 2.4% Li2O and 241ppm Ta2O5 from 74m					
							and 3m @ 2% Li2O and 260ppm Ta2O5 from 78m					
							139	144	5	1	139	
							incl. 1m @ 2% Li2O and 167ppm Ta2O5 from 142m					
KVR00055	258374	6959379	510	-55	47	100	52	60	8	0.9	110	
							incl. 2m @ 1.9% Li2O and 93ppm Ta2O5 from 53m					
KVR00057	258360	6959477	511	-56	49	50	52	58	6	1.3	93	
							28	32	4	0.6	126	
KVR00058	258274	6959395	509	-56	48	120	70	77	7	1.4	130	
							incl. 3m @ 1.9% Li2O and 189ppm Ta2O5 from 72m					
KVR00059	258254	6959520	511	-57	47	80	43	50	7	1.4	156	
							incl. 1m @ 2.6% Li2O and 305ppm Ta2O5 from 47m					
KVR00060	258298	6959565	510	-56	50	80	No significant assays					
KVR00061	258194	6959467	507	-56	47	124	75	82	7	1.5	134	
							incl. 3m @ 1.9% Li2O and 114ppm Ta2O5 from 76m					

Hole_ID	East	North	RL	Dip	Azimuth	Depth (m)	Significant Li2O (>0.4%) and Ta2O5 (>50ppm) results					Prospect
							From(m)	To(m)	Interval(m)	Li2O (%)	Ta2O5 (ppm)	
KVR00062	258563	6958526	520	-60	49	180	48	51	3	1	492	Mt Mann
							incl. 1m @ 1.7% Li2O and 336ppm Ta2O5 from 48m					
							94	99	5	1.1	143	
							incl. 2m @ 2% Li2O and 288ppm Ta2O5 from 94m					
							105	108	3	1.2	142	
							incl. 1m @ 1.7% Li2O and 171ppm Ta2O5 from 106m					
							118	119	1	1.1	333	
							125	128	3	0.6	83	
							137	146	9	1	135	
							KVR00062A	258555	6958525	520	-60	
KVR00063	258833	6958178	523	-61	46	105	No significant assays					
KVR00064	258805	6958151	521	-60	44	100						
KVR00065	258780	6958123	524	-60	43	100						
KVR00066	258754	6958091	524	-65	46	101						
KVR00067	258449	6958419	524	-61	47	238	117	121	4	0.8	152	
							123	129	6	1.2	184	
							incl. 2m @ 1.6% Li2O and 133ppm Ta2O5 from 127m					
							144	157	13	1.3	125	
							incl. 4m @ 2% Li2O and 137ppm Ta2O5 from 147m					
							and 1m @ 2% Li2O and 100ppm Ta2O5 from 153m					
							184	195	11	1.4	72	
							incl. 4m @ 2.2% Li2O and 84ppm Ta2O5 from 188m					
							199	201	2	0.8	93	
							203	212	9	1.2	77	
incl. 2m @ 1.7% Li2O and 138ppm Ta2O5 from 210m												
KVR00068	258779	6958265	525	-59	46	100	72	78	6	NSR	129	
							69	78	9	1.5	178	
							incl. 4m @ 1.8% Li2O and 171ppm Ta2O5 from 71m					
KVR00069	258689	6958169	529	-66	43	130	83	94	11	1.2	184	
							incl. 2m @ 2.2% Li2O and 249ppm Ta2O5 from 83m					
							96	100	4	0.6	110	
							0	4	4	1.6	124	
KVR00070	258387	6958609	518	-59	55	80	39	42	3	1.5	118	
							55	61	6	1.3	119	
							incl. 2m @ 1.8% Li2O and 109ppm Ta2O5 from 57m					
							31	46	15	1.6	129	
KVR00071	258665	6958290	538	-61	47	100	incl. 6m @ 2% Li2O and 116ppm Ta2O5 from 35m					
							and 3m @ 1.7% Li2O and 146ppm Ta2O5 from 42m					
							46	56	10	1.5	81	
							incl. 5m @ 2% Li2O and 86ppm Ta2O5 from 48m					
							64	66	2	1.5	92	
KVR00072	258407	6958564	519	-60	49	180	97	98	1	1.5	259	
							106	107	1	1.3	994	
							125	128	3	1.3	146	
							incl. 1m @ 2.3% Li2O and 164ppm Ta2O5 from 126m					
							161	169	8	1.8	130	
							incl. 6m @ 2.1% Li2O and 143ppm Ta2O5 from 162m					
							72	90	18	1.4	145	
KVR00073	258635	6958263	541	-65	45	140	incl. 4m @ 1.9% Li2O and 153ppm Ta2O5 from 75m					
							and 5m @ 1.9% Li2O and 155ppm Ta2O5 from 83m					
							104	118	14	1.3	176	
							incl. 5m @ 2% Li2O and 189ppm Ta2O5 from 104m					
							and 2m @ 2% Li2O and 226ppm Ta2O5 from 111m					
KVR00074	258354	6958569	518	-65	45	140	88	99	11	1.4	97	
							incl. 1m @ 1.9% Li2O and 96ppm Ta2O5 from 88m					
							and 6m @ 1.8% Li2O and 107ppm Ta2O5 from 91m					
							112	119	7	1.8	150	
							incl. 5m @ 2.2% Li2O and 143ppm Ta2O5 from 114m					

# KATHLEEN VALLEY RC DRILLING STATISTICS (CONTD)



Hole_ID	East	North	RL	Dip	Azimuth	Depth (m)	Significant Li2O (>0.4%) and Ta2O5 (>50ppm) results					Prospect
							From (m)	To (m)	Interval (m)	Li2O (%)	Ta2O5 (ppm)	
KVR0075	258686	6958371	539	-65	47	100	79	87	8	1	228	Mt Mann
							incl. 1m @ 1.8% Li2O and 344ppm Ta2O5 from 81m and 1m @ 1.6% Li2O and 149ppm Ta2O5 from 86m					
							89	90	1	1.8	147	
KVR0076	258450	6958610	518	-65	45	130	98	105	7	1.6	281	Mt Mann
							incl. 3m @ 2.4% Li2O and 252ppm Ta2O5 from 99m					
							113	119	6	0.4	42	
KVR0077	258573	6958267	545	-65	44	180	109	137	28	1.4	108	Mt Mann
							incl. 14m @ 2.2% Li2O and 147ppm Ta2O5 from 109m					
							149	152	3	1.1	103	
KVR0078	258595	6959106	520	-69	230	190	169	171	2	1	169	Kathleens Corner
							incl. 6m @ 2.3% Li2O and 214ppm Ta2O5 from 80m and 1m @ 2.6% Li2O and 186ppm Ta2O5 from 89m					
							114	120	6	2.1	171	
KVR0079	258535	6958448	530	-65	45	120	127	147	20	1.5	147	Mt Mann
							incl. 5m @ 2.4% Li2O and 172ppm Ta2O5 from 114m					
							178	181	3	1.8	134	
KVR0080	258632	6958999	524	-65	225	120	24	36	12	1.9	132	Kathleens Corner
							incl. 7m @ 2.3% Li2O and 135ppm Ta2O5 from 29m					
							55	62	7	1.5	96	
KVR0081	258503	6958408	529	-65	45	125	75	76	1	2.8	47	Mt Mann
							incl. 4m @ 2.2% Li2O and 281ppm Ta2O5 from 76m and 3m @ 2% Li2O and 148ppm Ta2O5 from 86m					
							103	104	1	0.9	132	
KVR0082	258477	6958503	523	-60	50	100	40	41	1	1.5	213	Kathleens Corner
							incl. 10m @ 2.1% Li2O and 175ppm Ta2O5 from 92m					
							88	103	15	1.9	162	
KVR0083	258714	6958927	522	-65	227	136	41	50	9	1.8	150	Mt Mann
							incl. 7m @ 2.1% Li2O and 133ppm Ta2O5 from 42m					
							58	63	5	1.4	110	
KVR0084	258451	6958481	522	-64	47	130	13	14	1	1	325	Kathleens Corner
							incl. 3m @ 1.7% Li2O and 105ppm Ta2O5 from 58m					
							28	29	1	0.9	298	
KVR0085	258225	6959344	508	-70	49	120	94	106	12	1.9	202	Mt Mann
							incl. 7m @ 2.5% Li2O and 209ppm Ta2O5 from 95m					
							116	117	1	0.6	132	
KVR0086	258153	6959419	509	-70	49	120	120	127	7	2	91	Kathleens Corner
							incl. 2m @ 2.7% Li2O and 92ppm Ta2O5 from 121m and 3m @ 2.2% Li2O and 96ppm Ta2O5 from 124m					
							71	80	9	1.1	115	

Hole_ID	East	North	RL	Dip	Azimuth	Depth (m)	Significant Li2O (>0.4%) and Ta2O5 (>50ppm) results					Prospect
							From (m)	To (m)	Interval (m)	Li2O (%)	Ta2O5 (ppm)	
KVR0087	258320	6958621	513	-49	50	112	29	34	5	1.4	99	Mt Mann
							incl. 2m @ 2% Li2O and 114ppm Ta2O5 from 30m					
							68	71	3	1.3	84	
KVR0088	258302	6958603	514	-60	49	148	78	84	6	1.2	65	Mt Mann
							incl. 1m @ 2.2% Li2O and 96ppm Ta2O5 from 69m					
							88	92	4	1.7	121	
KVR0089	258593	6958356	542	-60	46	118	94	94	3	1.6	83	Mt Mann
							incl. 2m @ 1.9% Li2O and 85ppm Ta2O5 from 92m					
							100	106	6	1.4	82	
KVR0090	258766	6958178	525	-59	46	70	136	142	6	1.6	139	Mt Mann
							incl. 2m @ 2% Li2O and 75ppm Ta2O5 from 102m					
							29	40	11	1.6	127	
KVR0091	258738	6958153	525	-59	46	90	97	98	1	1.1	150	Mt Mann
							incl. 5m @ 1.9% Li2O and 122ppm Ta2O5 from 32m					
							18	21	3	0.1	228	
KVR0092	258978	6959117	513	-55	47	130	34	37	3	1.3	126	Mt Mann
							incl. 1m @ 1.8% Li2O and 159ppm Ta2O5 from 14m					
							14	16	2	1.2	110	
KVR0093	258935	6959074	514	-55	46	132	117	122	5	1.6	161	Kathleens Corner
							incl. 3m @ 2.1% Li2O and 204ppm Ta2O5 from 118m					
							23	26	3	1.5	173	
KVR0094	258893	6959032	515	-55	49	126	93	94	1	1.1	118	Kathleens Corner
							incl. 1m @ 2% Li2O and 128ppm Ta2O5 from 24m					
							117	119	2	1	96	
KVR0095	258852	6958991	516	-54	43	120	1	5	4	1.6	149	Kathleens Corner
							incl. 1m @ 1.8% Li2O and 121ppm Ta2O5 from 1m					
							42	49	7	1	66	
KVR0096	258806	6958949	517	-55	47	120	102	103	1	1	120	Kathleens Corner
							incl. 1m @ 2.8% Li2O and 89ppm Ta2O5 from 47m					
							112	117	5	1.4	161	
KVR0097	258763	6958905	518	-56	46	138	39	43	4	1.5	130	Kathleens Corner
							incl. 2m @ 2.1% Li2O and 169ppm Ta2O5 from 114m					
							61	65	4	1.6	135	
KVR0098	258721	6958858	519	-55	48	168	73	75	2	1	78	Kathleens Corner
							incl. 3m @ 1.8% Li2O and 132ppm Ta2O5 from 62m					
							103	110	7	0	229	
KVR0099	258763	6958905	518	-56	46	138	14	20	6	0	230	Kathleens Corner
							incl. 1m @ 1.7% Li2O and 178ppm Ta2O5 from 83m					
							56	66	10	0	191	
KVR0100	258763	6958905	518	-56	46	138	82	86	4	1.1	136	Kathleens Corner
							incl. 1m @ 1.9% Li2O and 182ppm Ta2O5 from 80m and 1m @ 2.4% Li2O and 129ppm Ta2O5 from 84m					
							90	98	8	0	122	
KVR0101	258763	6958905	518	-56	46	138	78	85	7	1.2	247	Kathleens Corner
							incl. 1m @ 1.9% Li2O and 104ppm Ta2O5 from 13m					
							92	94	2	1	149	
KVR0102	258721	6958858	519	-55	48	168	103	105	2	1.1	79	Kathleens Corner
							incl. 3m @ 2.2% Li2O and 263ppm Ta2O5 from 111m					
							121	123	2	1.9	112	
KVR0103	258721	6958858	519	-55	48	168	13	16	3	1.4	171	Kathleens Corner
							incl. 1m @ 1.9% Li2O and 125ppm Ta2O5 from 95m					
							89	96	7	1.3	219	
KVR0104	258721	6958858	519	-55	48	168	110	111	1	1.2	73	Kathleens Corner
							incl. 3m @ 1.7% Li2O and 213ppm Ta2O5 from 90m and 1m @ 1.9% Li2O and 125ppm Ta2O5 from 95m					
							113	116	3	1	76	
KVR0105	258721	6958858	519	-55	48	168	161	165	4	1.4	103	Kathleens Corner
							incl. 2m @ 1.7% Li2O and 92ppm Ta2O5 from 163m					

# KATHLEEN VALLEY RC DRILLING STATISTICS (CONTD)



Hole_ID	East	North	RL	Dip	Azimuth	Depth (m)	Significant Li2O (>0.4%) and Ta2O5 (>50ppm) results					Prospect
							From(m)	To(m)	Interval(m)	Li2O (%)	Ta2O5 (ppm)	
KVRC0099	258720	6958856	519	-66	227	150	21	27	6	1.1	282	Kathleens Corner
							incl. 2m @ 2.2% Li2O and 319ppm Ta2O5 from 24m					
							89	95	6	2.1	252	
							incl. 5m @ 2.2% Li2O and 233ppm Ta2O5 from 89m					
							112	114	2	1.5	266	
							incl. 1m @ 1.9% Li2O and 256ppm Ta2O5 from 112m					
							131	139	8	1.9	119	
							incl. 3m @ 2.5% Li2O and 121ppm Ta2O5 from 131m and 2m @ 2.3% Li2O and 133ppm Ta2O5 from 135m and 1m @ 2.3% Li2O and 139ppm Ta2O5 from 138m					
KVRC0100	258677	6959246	509	-56	50	144	25	27	2	1.4	247	Kathleens Corner
							35	37	2	1	175	
							78	98	21	1.1	146	
							incl. 6m @ 1.7% Li2O and 147ppm Ta2O5 from 78m and 4m @ 1.9% Li2O and 317ppm Ta2O5 from 93m and 1m @ 1.7% Li2O and 272ppm Ta2O5 from 115m					
							6	11	5	1.6	105	
							incl. 3m @ 2.1% Li2O and 101ppm Ta2O5 from 7m					
KVRC0101	258636	6959202	510	-57	47	126	56	61	5	0.9	141	Kathleens Corner
							incl. 2m @ 1.6% Li2O and 260ppm Ta2O5 from 58m					
							66	68	2	1.5	174	
							incl. 1m @ 1.7% Li2O and 142ppm Ta2O5 from 66m					
							81	89	8	1.5	263	
							incl. 3m @ 1.9% Li2O and 257ppm Ta2O5 from 82m and 2m @ 1.8% Li2O and 243ppm Ta2O5 from 86m					
							94	108	14	1	97	
							incl. 1m @ 2.1% Li2O and 54ppm Ta2O5 from 97m and 2m @ 2% Li2O and 167ppm Ta2O5 from 106m					
KVRC0102	258599	6959167	513	-59	46	120	26	33	7	1.2	116	Kathleens Corner
							incl. 2m @ 2.4% Li2O and 120ppm Ta2O5 from 29m					
							70	78	8	1.8	197	
							incl. 6m @ 2.1% Li2O and 197ppm Ta2O5 from 71m					
							86	98	12	1.1	141	
							incl. 3m @ 2.3% Li2O and 312ppm Ta2O5 from 92m					
KVRC0103	258548	6959116	520	-55	47	144	104	105	1	1.2	263	Kathleens Corner
							incl. 1m @ 1.7% Li2O and 65ppm Ta2O5 from 64m and 1m @ 1.6% Li2O and 190ppm Ta2O5 from 67m					
							91	100	9	1.9	262	
							incl. 2m @ 2.4% Li2O and 199ppm Ta2O5 from 92m and 5m @ 2.2% Li2O and 313ppm Ta2O5 from 95m					
							117	125	8	1.3	168	
							incl. 4m @ 1.8% Li2O and 240ppm Ta2O5 from 118m					
							128	130	2	1	197	
							135	138	3	1.8	111	
KVRC0104	258544	6959111	520	-68	225	178	141	143	2	0.9	171	Kathleens Corner
							81	83	2	1.5	187	
							incl. 1m @ 1.7% Li2O and 120ppm Ta2O5 from 81m					
							92	105	13	1.6	251	
							incl. 4m @ 2.1% Li2O and 213ppm Ta2O5 from 92m and 3m @ 2.2% Li2O and 282ppm Ta2O5 from 98m					
							121	125	4	1.5	163	
							incl. 1m @ 2.3% Li2O and 170ppm Ta2O5 from 122m and 1m @ 2% Li2O and 149ppm Ta2O5 from 124m					
							136	139	3	1.5	191	
							incl. 1m @ 1.7% Li2O and 164ppm Ta2O5 from 138m					
							148	161	13	1.9	165	
incl. 3m @ 2.2% Li2O and 182ppm Ta2O5 from 148m and 8m @ 2% Li2O and 164ppm Ta2O5 from 152m												
170	172	2	1.3	125								

Hole_ID	East	North	RL	Dip	Azimuth	Depth (m)	Significant Li2O (>0.4%) and Ta2O5 (>50ppm) results					Prospect
							From(m)	To(m)	Interval(m)	Li2O (%)	Ta2O5 (ppm)	
KVRC0105	258868	6959291	517	-59	50	112	28	29	1	0.5	18	Kathleens Corner
KVRC0106	258821	6959242	518	-60	49	160	4	5	1	0.5	107	
							8	9	1	0.5	115	
							35	38	3	1.5	247	
							incl. 2m @ 1.9% Li2O and 261ppm Ta2O5 from 36m					
KVRC0107	258774	6959200	519	-60	46	124	109	111	2	1.1	172	
							7	9	2	1	253	
							21	24	3	1.1	203	
							incl. 1m @ 2% Li2O and 286ppm Ta2O5 from 22m					
							48	49	1	0.8	189	
							52	54	2	1.2	256	
							incl. 1m @ 1.8% Li2O and 303ppm Ta2O5 from 52m					
							59	60	1	1.1	181	
							73	75	2	0.5	103	
							90	95	5	0.9	156	
KVRC0108	258739	6959165	519	-59	42	124	26	27	1	1	248	
							40	46	6	1.4	233	
							incl. 3m @ 1.7% Li2O and 301ppm Ta2O5 from 41m					
							63	70	7	1.1	138	
							incl. 2m @ 2% Li2O and 233ppm Ta2O5 from 68m					
							80	88	8	1	120	
							incl. 1m @ 2.6% Li2O and 160ppm Ta2O5 from 86m					
							110	112	2	1.2	230	
KVRC0109	258696	6959120	520	-54	48	124	17	18	1	1.4	254	
							20	22	2	1.5	77	
							incl. 1m @ 2.4% Li2O and 115ppm Ta2O5 from 20m					
							62	77	15	1.5	191	
							incl. 10m @ 2% Li2O and 258ppm Ta2O5 from 67m					
KVRC0110	258655	6959076	523	-56	47	124	97	98	1	1	126	
							44	46	2	1.4	159	
							incl. 1m @ 2% Li2O and 125ppm Ta2O5 from 45m					
							75	87	12	1.6	205	
							incl. 8m @ 2% Li2O and 206ppm Ta2O5 from 77m					
							91	92	1	1.1	162	
							100	108	8	1.5	129	
incl. 2m @ 2.2% Li2O and 134ppm Ta2O5 from 105m												
KVRC0111	258609	6959034	523	-55	46	130	61	64	3	1.1	260	
							93	84	1	1.6	247	
							86	99	13	1.2	205	
							incl. 5m @ 1.9% Li2O and 292ppm Ta2O5 from 89m					
KVRC0112	258608	6959031	523	-69	227	154	114	117	3	0.4	22	
							75	89	14	1.5	202	
							incl. 3m @ 2.1% Li2O and 310ppm Ta2O5 from 78m and 3m @ 2.2% Li2O and 157ppm Ta2O5 from 84m					
							126	136	10	1.9	93	
							incl. 7m @ 2.2% Li2O and 97ppm Ta2O5 from 128m					
KVRC0113	258928	6959208	508	-54	45	124	141	142	1	1.7	250	
							146	150	4	1.5	148	
							incl. 1m @ 2.8% Li2O and 123ppm Ta2O5 from 123m					
							22	24	2	2.7	182	
KVRC0114	258885	6959166	514	-55	45	130	incl. 1m @ 4.2% Li2O and 156ppm Ta2O5 from 22m					
							33	36	3	0.1	329	
KVRC0115	258845	6959125	501	-54	46	130	114	119	5	0.1	146	
							0	6	6	0.6	154	
							24	25	1	1.1	204	
							37	41	4	1.4	163	
							incl. 2m @ 1.9% Li2O and 200ppm Ta2O5 from 38m					
							114	117	3	2	188	
incl. 2m @ 2.4% Li2O and 196ppm Ta2O5 from 114m												

# KATHLEEN VALLEY RC DRILLING STATISTICS (CONTD)



Hole_ID	East	North	RL	Dip	Azimuth	Depth (m)	Significant Li2O (>0.4%) and Ta2O5 (>50ppm) results					Prospect
							From(m)	To(m)	Interval(m)	Li2O (%)	Ta2O5 (ppm)	
KVRC0116	258800	6959080	504	-55	50	140	41	48	7	1.2	223	Kathleens Corner
							incl. 3m @ 1.7% Li2O and 245ppm Ta2O5 from 43m					
							53	59	6	1	131	
							incl. 1m @ 1.9% Li2O and 210ppm Ta2O5 from 53m					
							80	85	5	1.3	214	
KVRC0117	258755	6959038	519	-54	47	140	73	91	18	1.6	212	Kathleens Corner
							incl. 2m @ 2.1% Li2O and 180ppm Ta2O5 from 74m and 1m @ 2.4% Li2O and 231ppm Ta2O5 from 80m and 8m @ 2% Li2O and 213ppm Ta2O5 from 82m					
							104	107	3	0.9	134	
							22	24	2	0.9	297	
							83	97	14	1.2	217	
KVRC0118	258710	6958997	520	-55	49	172	128	134	6	1.4	178	Kathleens Corner
							incl. 1m @ 2.5% Li2O and 201ppm Ta2O5 from 84m and 2m @ 2.1% Li2O and 253ppm Ta2O5 from 89m and 1m @ 1.9% Li2O and 163ppm Ta2O5 from 96m					
							85	100	15	1.1	197	
							incl. 3m @ 1.9% Li2O and 157ppm Ta2O5 from 128m					
							85	100	15	1.1	197	
KVRC0119	258671	6958948	522	-53	48	142	56	58	2	1.6	323	Kathleens Corner
							incl. 1m @ 2.2% Li2O and 408ppm Ta2O5 from 88m and 5m @ 1.6% Li2O and 133ppm Ta2O5 from 94m					
							98	119	21	1.5	197	
							incl. 3m @ 2.3% Li2O and 243ppm Ta2O5 from 99m and 5m @ 2.8% Li2O and 238ppm Ta2O5 from 105m and 1m @ 1.7% Li2O and 377ppm Ta2O5 from 114m and 1m @ 1.9% Li2O and 361ppm Ta2O5 from 117m					
							28	35	7	0.6	109	
KVRC0120	258668	6958944	523	-53	228	140	96	103	7	0.8	172	Kathleens Corner
							incl. 1m @ 1.7% Li2O and 309ppm Ta2O5 from 33m					
							114	123	9	0.9	111	
							incl. 1m @ 1.7% Li2O and 225ppm Ta2O5 from 99m					
							128	131	3	1.1	270	
KVRC0121	258556	6959190	513	-56	47	142	134	135	1	2.3	193	Kathleens Corner
							incl. 2m @ 1.8% Li2O and 140ppm Ta2O5 from 115m					
							67	71	4	1.1	157	
							incl. 1m @ 1.9% Li2O and 227ppm Ta2O5 from 129m					
							126	138	12	1.3	122	
KVRC0122	258514	6959152	521	-56	45	148	51	53	2	1.2	176	Kathleens Corner
							incl. 6m @ 2.5% Li2O and 254ppm Ta2O5 from 100m and 5m @ 1.7% Li2O and 292ppm Ta2O5 from 126m					
							66	71	4	1.1	157	
							incl. 5m @ 1.9% Li2O and 128ppm Ta2O5 from 127m					
							99	121	22	1.5	218	
KVRC0123	258510	6959142	521	-84	53	160	52	54	2	1	182	Kathleens Corner
							incl. 1m @ 2% Li2O and 296ppm Ta2O5 from 66m					
							82	94	12	1.7	223	
							incl. 5m @ 2.5% Li2O and 279ppm Ta2O5 from 87m					
							102	106	4	1	169	
KVRC0124	258510	6959142	521	-84	53	160	113	125	12	1.8	161	Kathleens Corner
							incl. 2m @ 1.8% Li2O and 212ppm Ta2O5 from 113m and 6m @ 2.5% Li2O and 189ppm Ta2O5 from 118m					
							141	153	12	0.9	131	
							incl. 4m @ 1.8% Li2O and 210ppm Ta2O5 from 148m					
							141	153	12	0.9	131	

Hole_ID	East	North	RL	Dip	Azimuth	Depth (m)	Significant Li2O (>0.4%) and Ta2O5 (>50ppm) results					Prospect
							From(m)	To(m)	Interval(m)	Li2O (%)	Ta2O5 (ppm)	
KVRC0132	258421	6958793	512	-54	48	160	100	104	4	2	252	Kathleen's Corner
							incl. 3m @ 2.4% Li2O and 283ppm Ta2O5 from 100m					
							141	145	4	1.8	164	
							incl. 3m @ 2.2% Li2O and 189ppm Ta2O5 from 142m					
							152	153	1	0.9	150	
KVRC0133	258494	6958713	514	-55	45	170	70	72	2	1.4	185	Kathleen's Corner
							incl. 3m @ 2% Li2O and 252ppm Ta2O5 from 108m					
							96	98	2	1.1	266	
							108	113	5	1.6	226	
							131	133	2	1.7	103	
KVRC0134	258606	6958572	520	-55	49	160	41	44	3	1	332	Kathleen's Corner
							incl. 1m @ 1.7% Li2O and 270ppm Ta2O5 from 42m					
							86	95	9	1.7	296	
							incl. 5m @ 2.3% Li2O and 405ppm Ta2O5 from 88m					
							103	105	2	1.1	120	
KVRC0135	258189	6959595	510	-54	46	80	106	110	4	1.3	150	Kathleen's Corner
							incl. 1m @ 1.8% Li2O and 215ppm Ta2O5 from 103m					
							106	110	4	1.3	150	
							incl. 2m @ 1.7% Li2O and 153ppm Ta2O5 from 107m					
							131	133	2	0.9	159	
KVRC0136	258120	6959522	510	-64	46	110	33	35	2	0	347	Kathleen's Corner
							incl. 3m @ 2% Li2O and 183ppm Ta2O5 from 59m					
							56	64	8	1.2	122	
							incl. 1m @ 3.7% Li2O and 136ppm Ta2O5 from 98m					
							48	52	4	0	301	
KVRC0137	258083	6959629	510	-60	46	120	109	112	3	0	132	Kathleen's Corner
KVRC0138	258164	6959718	510	-55	45	100	57	59	2	0	146	
KVRC0139	258184	6959859	510	-55	44	100	60	64	4	0	165	
KVRC0140	258105	6959801	510	-55	44	130	97	102	5	0	153	
KVRC0141	258037	6959868	512	-62	44	124	No significant assays					
KVRC0142	258109	6959937	512	-55	41	112	91	94	3	0	507	Kathleen's Corner
KVRC0143	258464	6959736	508	-56	47	94	85	86	1	0	237	
KVRC0144	258422	6959693	508	-55	42	106	63	65	2	0	158	
KVRC0145	257970	6959380	508	-57	42	130	23	28	5	0	166	
							44	48	4	1.5	166	
							incl. 2m @ 2.5% Li2O and 133ppm Ta2O5 from 45m					
KVRC0146	257880	6959300	508	-56	45	118	72	76	4	0	131	Kathleen's Corner

\* True widths estimated as follows:  
 Holes drilled towards NE (~045) at Kathleen's Corner, true widths 85-95%  
 Holes drilled towards NE (~045) at Mt Mann, true widths 80-90%  
 Holes drilled towards SW (~225) at Kathleen's Corner, true widths 65-75%  
 Holes drilled towards SW (~225) at Mt Mann, true widths 30-50% of  
 KVRC0015 true widths ~20% of downhole width

# KATHLEEN VALLEY DIAMOND CORE DRILLING STATISTICS



Hole_ID	East	North	RL	Dip	Azimuth	Depth (m)	Significant Li2O (>0.4%) and Ta2O5 (>50ppm) results					Prospect
							From(m)	To(m)	Interval(m)	Li2O (%)	Ta2O5 (ppm)	
KVDD0001	258690	6959191	512	-55	39	141.2	39.05	41.24	2.19	2.1	291	Kathleens Corner
							incl. 1m @ 2.5% Li2O and 289ppm Ta2O5 from 40m					
							47.07	49	1.93	2.7	258	
							53	54.87	1.87	1.7	230	
							incl. 0.87m @ 2.2% Li2O and 217ppm Ta2O5 from 54m					
							70.65	85.55	14.9	1.4	190	
							incl. 4m @ 2.1% Li2O and 288ppm Ta2O5 from 72m and 4m @ 1.8% Li2O and 178ppm Ta2O5 from 81m					
							102.26	103.71	1.45	1.4	336	
							124	125	1	1	243	
							14	16	2	1	452	
KVDD0002	258738	6959090	514	-55	45	156.4	59.29	76	16.71	1.6	215	Kathleens Corner
							incl. 3m @ 2.2% Li2O and 124ppm Ta2O5 from 63m and 6m @ 2.3% Li2O and 241ppm Ta2O5 from 68m					
							80.48	83	2.52	1.7	153	
							incl. 1.52m @ 2% Li2O and 110ppm Ta2O5 from 80.48m					
							122.19	123	0.81	1	238	
							130	130.9	0.9	0.9	204	
							72	87	15	1.4	233	
							incl. 7m @ 2% Li2O and 212ppm Ta2O5 from 75m and 1m @ 1.9% Li2O and 116ppm Ta2O5 from 86m					
							134.06	141	6.94	1.5	148	
							incl. 1m @ 2.1% Li2O and 74ppm Ta2O5 from 135m and 2m @ 2.1% Li2O and 172ppm Ta2O5 from 137m					
KVDD0003	258722	6958935	520	-55	41	159.2	42	50.12	8.12	1.4	125	Kathleens Corner
							incl. 2m @ 2.1% Li2O and 99ppm Ta2O5 from 46m					
							66.2	66.85	0.65	1.1	87	
							70.22	76	5.78	1.5	106	
							incl. 1.34m @ 1.9% Li2O and 98ppm Ta2O5 from 71m and 2m @ 1.8% Li2O and 134ppm Ta2O5 from 74m					
							103.91	108	4.09	1.9	301	
							115.75	117	1.25	0.6	82	
							141	141.9	0.9	1.1	232	
							162	170	8	1.5	82	
							incl. 3m @ 2.1% Li2O and 81ppm Ta2O5 from 167m					
KVDD0004	258444	6958521	521	-54	50	189.2	173.8	178.5	4.7	1.3	119	Kathleens Corner
							incl. 8m @ 2.1% Li2O and 137ppm Ta2O5 from 44m					
							79	83	4	1.1	99	
							102.04	103.83	1.79	1.4	337	
							130.03	136	5.97	1.8	155	
							165.42	170.44	5.02	1.3	138	
							incl. 1.6m @ 2% Li2O and 148ppm Ta2O5 from 167m					
							181.98	191	9.02	1.5	160	
							incl. 1.93m @ 1.9% Li2O and 103ppm Ta2O5 from 183m and 2m @ 2.2% Li2O and 256ppm Ta2O5 from 188m					
							38.05	52	13.95	1.6	129	
KVDD0005	258528	6958434	531	-60	44	216.4	incl. 7m @ 1.9% Li2O and 118ppm Ta2O5 from 43m					Mt Mann
							65.99	66.89	0.9	1.7	188	
							95.16	100	4.84	1	196	
							115	118	3	1.7	174	

Hole_ID	East	North	RL	Dip	Azimuth	Depth (m)	Significant Li2O (>0.4%) and Ta2O5 (>50ppm) results					Prospect
							From(m)	To(m)	Interval(m)	Li2O (%)	Ta2O5 (ppm)	
KVDD0007	258569	6959079	520	-60	228	231.6	88.45	98.91	10.46	1.3	205	Kathleens Corner
							incl. 5m @ 2% Li2O and 198ppm Ta2O5 from 88.45m					
							108.13	114.17	6.04	1.6	155	
							incl. 4m @ 1.9% Li2O and 151ppm Ta2O5 from 108.13m					
							145.08	148.26	3.18	1.4	423	
							156.75	163.85	7.1	1.5	165	
							incl. 4.7m @ 1.8% Li2O and 193ppm Ta2O5 from 156.75m					
							165.73	169.7	3.97	1.3	159	
							incl. 1.97m @ 2% Li2O and 158ppm Ta2O5 from 165.73m					
							184.23	186.35	2.12	1.1	184	
KVDD0008	258629	6958992	523	-48	223	153.2	incl. 1m @ 1.8% Li2O and 245ppm Ta2O5 from 184.23m					Kathleens Corner
							188.65	191.5	2.85	2.4	140	
							205.11	207.1	1.99	1.1	129	
							217.76	218.76	1	1.2	154	
							incl. 1m @ 2% Li2O and 315ppm Ta2O5 from 123.47m and 1m @ 1.9% Li2O and 238ppm Ta2O5 from 125.47m and 0.93m @ 2.6% Li2O and 100ppm Ta2O5 from 129.47m					
							123.47	132.4	8.93	1.3	196	
							137.48	137.98	0.5	1.4	100	
							39.1	43	3.9	1.4	448	
							105.23	106.22	0.99	2	224	
							incl. 0.77m @ 2.4% Li2O and 123ppm Ta2O5 from 105.23m					
KVDD0009	258696	6958909	521	-52	221	177.5	113.5	120.1	6.6	0	338	Kathleens Corner

True widths - see RC drill statistics

# BULDANIA RC DRILLING STATISTICS



Hole_ID	Prospect	East	North	RL	Dip	Azimuth	Depth	Significant Li2O (>0.4%) and Ta2O5 (>50ppm) results				
								From(m)	To(m)	Interval(m)	Li2O (%)	Ta2O5 (ppm)
BDRC0001	Conda	414492	6450902	337	-60	320	82	25	26	1	0.5	1
								28	29	1	0.5	52
								11	14	3	0.8	50
BDRC0002	Conda	414463	6450923	333	-60	323	80	incl. 1m @ 1.4% Li2O and 40ppm Ta2O5 from 13m				
								28	44	16	1.2	81
BDRC0003	Anna	414218	6451415	327	-59	52	100	incl. 1m @ 1.9% Li2O and 148ppm Ta2O5 from 34m				
								incl. 2m @ 1.7% Li2O and 67ppm Ta2O5 from 37m				
								incl. 2m @ 1.5% Li2O and 40ppm Ta2O5 from 41m				
								62	66	4	1.1	233
								incl. 1m @ 2% Li2O and 347ppm Ta2O5 from 63m				
								75	78	3	1.9	132
								97	100	3	1.8	82
incl. 1m @ 3.4% Li2O and 101ppm Ta2O5 from 99m (EoH)												
BDRC0004	Anna	414244	6451442	327	-60	51	100	22	25	3	0.6	7
								29	30	1	0.5	38
								32	37	5	0.9	45
								39	42	3	1.1	64
								70	82	12	1.2	65
								incl. 7m @ 1.7% Li2O and 56ppm Ta2O5 from 72m				
								96	97	1	0.5	49
BDRC0005	Conda	414522	6450872	334	-60	318	80	98	99	1	1.4	48
								46	48	2	0.8	94
								69	70	1	0.6	49
BDRC0006	Conda	414410	6450980	338	-59	322	80	No significant assays				
BDRC0007	Conda	414436	6450950	338	-59	319	80	2	5	3	1.1	79
BDRC0008	Conda	414442	6450834	338	-59	323	80	7	8	1	1.2	37
								22	23	1	1	53
								31	32	1	0.6	32
BDRC0009	Conda	414401	6450871	339	-59	313	80	10	11	1	1.2	34
BDRC0010	Conda	414351	6450920	340	-59	323	50	No significant assays				
BDRC0011	Anna	414190	6451389	331	-58	52	100	84	87	3	0.1	192
BDRC0012	Anna	414259	6451464	327	-59	57	140	7	9	2	1	36
								16	41	25	1.2	48
								incl. 3m @ 2% Li2O and 48ppm Ta2O5 from 22m				
								incl. 5m @ 2% Li2O and 25ppm Ta2O5 from 27m				
								51	61	10	1	53
								incl. 2m @ 2% Li2O and 51ppm Ta2O5 from 53m				
								79	84	5	0.7	38
								86	88	2	1	73
								99	106	7	1	44
								incl. 1m @ 1.8% Li2O and 32ppm Ta2O5 from 99m				
BDRC0013	Anna	414301	6451497	320	-58	54	100	incl. 1m @ 1.7% Li2O and 66ppm Ta2O5 from 103m				
								109	11	2	0.5	15
								1	6	5	1.2	64
								incl. 2m @ 2.3% Li2O and 45ppm Ta2O5 from 1m				
								46	48	2	1.3	64
BDRC0014	Anna	414306	6451362	329	-58	50	166	13	32	19	0.7	174
								35	37	2	1.1	34
								39	45	6	0.4	69
								60	63	3	1.3	111
								incl. 1m @ 1.8% Li2O and 80ppm Ta2O5 from 61m				
								84	98	14	0.9	68
								incl. 4m @ 1.6% Li2O and 81ppm Ta2O5 from 85m				
								114	116	2	1.2	61
								incl. 1m @ 1.9% Li2O and 95ppm Ta2O5 from 115m				
								124	154	30	0.8	46
incl. 5m @ 1.5% Li2O and 65ppm Ta2O5 from 128m												

Hole_ID	Prospect	East	North	RL	Dip	Azimuth	Depth	Significant Li2O (>0.4%) and Ta2O5 (>50ppm) results				
								From(m)	To(m)	Interval	Li2O (%)	Ta2O5 (ppm)
BDRC0015	Anna	414347	6451390	329	-58	56	130	7	12	5	1	58
								incl. 1m @ 1.7% Li2O and 18ppm Ta2O5 from 10m				
								15	17	2	0.6	1
								23	24	1	0.5	1
								39	97	58	1.2	36
								incl. 20m @ 1.6% Li2O and 29ppm Ta2O5 from 40m				
								incl. 4m @ 1.8% Li2O and 34ppm Ta2O5 from 71m				
BDRC0016	Anna	414373	6451427	322	-58	47	104	incl. 2m @ 2.5% Li2O and 33ppm Ta2O5 from 93m				
								6	42	36	1	34
								incl. 3m @ 2% Li2O and 31ppm Ta2O5 from 12m				
								incl. 6m @ 1.7% Li2O and 33ppm Ta2O5 from 29m				
								incl. 1m @ 1.8% Li2O and 19ppm Ta2O5 from 40m				
								60	61	1	0.6	17
								82	83	1	1.7	52
BDRC0017	Anna	414398	6451451	322	-59	47	70	0	3	3	0.7	54
								18	33	15	1.2	44
								incl. 3m @ 2.4% Li2O and 36ppm Ta2O5 from 20m				
								incl. 2m @ 1.7% Li2O and 33ppm Ta2O5 from 27m				
								54	56	2	1.1	87
BDRC0018	Anna	414150	6451480	320	-60	44	100	16	21	5	0.7	54
								23	35	12	0.8	69
								incl. 1m @ 1.7% Li2O and 57ppm Ta2O5 from 25m				
								42	45	3	0.5	42
								30	33	3	0.8	74
BDRC0019	Anna	414190	6451528	320	-59	49	100	42	50	8	0.7	49
								55	61	6	0.7	62
								No significant assays				
								9	22	13	1	92
BDRC0020	Anna	414005	6451623	330	-55	49	100	No significant assays				
BDRC0021	Anna	414035	6451658	329	-53	230	70	incl. 1m @ 1.8% Li2O and 89ppm Ta2O5 from 10m				
								incl. 2m @ 1.8% Li2O and 65ppm Ta2O5 from 20m				
BDRC0022	Anna	414074	6451708	323	-53	230	117	33	39	7	0.7	43
BDRC0023	Anna	414226	6451571	314	-62	37	100	No significant assays				
BDRC0024	Anna	414255	6451464	321	-58	236	110	14	17	3	0.7	42
								26	46	20	0.8	61
								incl. 4m @ 1.5% Li2O and 102ppm Ta2O5 from 31m				
								51	53	2	1.7	158
								61	70	9	1.5	62
								incl. 5m @ 2% Li2O and 74ppm Ta2O5 from 61m				
								73	79	6	1	51
incl. 1m @ 1.6% Li2O and 51ppm Ta2O5 from 74m												
BDRC0025	Anna	414366	6451414	323	-45	227	148	33	36	3	0.6	1
BDRC0026	Conda	414423	6450625	317	-58	316	100	No significant assays				
BDRC0027	Conda	414444	6450718	330	-59	319	100	No significant assays				
BDRC0028	Conda	414394	6450764	325	-60	317	100	No significant assays				
BDRC0029	Conda	414348	6450814	326	-58	312	50	No significant assays				
BDRC0030	Regional	414591	6451574	309	-59	269	60	1	2	1	0.9	31
								7	8	1	1.2	32
								5	7	2	0.6	26
BDRC0031	Regional	414630	6451526	306	-59	278	60	11	13	2	1.5	25
								23	25	2	1.4	57
								No significant assays				
BDRC0032	Regional	414559	6451464	303	-59	278	80	No significant assays				
BDRC0033	Regional	414163	6451776	310	-59	93	100	No significant assays				
BDRC0034	Regional	414470	6451221	317	-58	276	50	No significant assays				
BDRC0035	Regional	414499	6451168	338	-59	270	60	No significant assays				
BDRC0036	Anna	414117	6451457	337	-58	46	112	No significant assays				

True widths estimated to be 90-100% of downhole intersections



# TOOLEBUC / LILYVALE EXTENDED – DRILL HOLE STATISTICS



Hole_ID	Prospect	East	North	RL	Depth	Azimuth	Dip	Significant V2O5 (>0.25%)					
								From (m)	To (m)	Interval	V2O5%		
JRC08016	Lilyvale	695813	7735519	135	30	0	-90	No significant assays					
JRC08017	Lilyvale	695776	7735124	135	24	0	-90	No significant assays					
JRC08018	Lilyvale	695745	7734704	135	24	0	-90	6	12	6	0.34	incl. 1m @ 0.52% V2O5 from 8m	
JRC08019	Lilyvale	695712	7734299	135	24	0	-90	No significant assays					
JRC08020	Lilyvale	695680	7733911	135	21	0	-90	3	6	3	0.36		
JRC08021	Lilyvale	695640	7733474	135	21	0	-90	6	11	5	0.32	incl. 1m @ 0.51% V2O5 from 7m	
JRC08022	Lilyvale	695607	7733082	135	21	0	-90	15	19	4	0.48	incl. 2m @ 0.63% V2O5 from 16m	
JRC08023	Lilyvale	695575	7732676	135	23	0	-90	No significant assays					
JRC08032	Lilyvale	696540	7732628	135	21	0	-90	5	11	6	0.33	incl. 1m @ 0.55% V2O5 from 7m	
JRC08033	Lilyvale	696596	7733066	135	18	0	-90	4	7	3	0.35		
JRC08034	Lilyvale	694590	7732894	135	27	0	-90	No significant assays					
JRC08035	Lilyvale	694601	7733314	135	21	0	-90	No significant assays					
JRC08036	Lilyvale	693582	7732961	135	27	0	-90	16	23	7	0.35	incl. 1m @ 0.71% V2O5 from 18m	
JRC08037	Lilyvale	693606	7733377	135	21	0	-90	No significant assays					
JRC08038	Lilyvale	693626	7733744	135	20	0	-90	No significant assays					
JRC08039	Lilyvale	693727	7734181	135	24	0	-90	6	11	5	0.36	incl. 1m @ 0.59% V2O5 from 7m	
JRC08040	Lilyvale	693770	7734602	135	24	0	-90	8	12	4	0.37	incl. 1m @ 0.57% V2O5 from 10m	

Hole_ID	Prospect	East	North	RL	Depth	Azimuth	Dip	Significant V2O5 (>0.25%)					
								From (m)	To (m)	Interval	V2O5%		
JRC08041	Lilyvale	693820	7734912	135	12	0	-90	6	11	5	0.33	incl. 1m @ 0.67% V2O5 from 8m	
JRC08042	Lilyvale	693860	7735279	135	24	0	-90	12	19	7	0.33	incl. 1m @ 0.57% V2O5 from 14m	
JRC08043	Lilyvale	692540	7733081	135	24	0	-90	13	19	6	0.35	incl. 1m @ 0.62% V2O5 from 14m	
JRC08044	Lilyvale	692590	7733454	135	26	0	-90	24	26	2	0.32		
JRC08045	Lilyvale	692640	7733847	135	24	0	-90	No significant assays					
JRC08046	Lilyvale	692685	7734234	135	27	0	-90	16	22	6	0.37	incl. 1m @ 0.65% V2O5 from 18m	
JRC08047	Lilyvale	692714	7734588	135	24	0	-90	18	24	6	0.37		
JRC08048	Lilyvale	692735	7734978	135	27	0	-90	3	6	3	0.36		
JRC08049	Lilyvale	692728	7735368	135	27	0	-90	9	14	5	0.34		
JRC08050	Lilyvale	691540	7733177	135	24	0	-90	6	12	6	0.33		
JRC08051	Lilyvale	691580	7733568	135	27	0	-90	13	20	7	0.33		
JRC08052	Lilyvale	691615	7733964	135	27	0	-90	9	16	7	0.31		
JRC08053	Lilyvale	691665	7734351	135	19	0	-90	13	19	6	0.36		
JRC08054	Lilyvale	691687	7734514	135	24	0	-90	23	24	1	0.41		
JRC08055	Lilyvale	691712	7734749	135	27	0	-90	11	18	7	0.32		
JRC08067	Lilyvale	692457	7732674	135	30	0	-90	14	22	8	0.36	incl. 1m @ 0.74% V2O5 from 16m	
JRC08068	Lilyvale	693533	7732554	135	24	0	-90	No significant assays					
JRC08071	Lilyvale	694524	7732441	135	24	0	-90	21	24	3	0.43	incl. 1m @ 0.56% V2O5 from 23m	

Down hole widths approximately equivalent to true widths