



**Springdale Project  
Grapchina International Graphene  
Innovation Conference  
19 - 21 September**

[cometres.com.au](http://cometres.com.au)

# Important Information

All currency amounts are in AUD\$ unless stated otherwise.

## **Disclaimer**

*This presentation has been prepared by Comet Resources Limited ("Company"). It does not purport to contain all the information that a prospective investor may require in connection with any potential investment in the Company. You should not treat the contents of this presentation, or any information provided in connection with it, as financial advice, financial product advice or advice relating to legal, taxation or investment matters.*

*No representation or warranty (whether express or implied) is made by the Company or any of its officers, advisers, agents or employees as to the accuracy, completeness or reasonableness of the information, statements, opinions or matters (express or implied) arising out of, contained in or derived from this presentation or provided in connection with it, or any omission from this presentation, nor as to the attainability of any estimates, forecasts or projections set out in this presentation.*

*This presentation is provided expressly on the basis that you will carry out your own independent inquiries into the matters contained in the presentation and make your own independent decisions about the affairs, financial position or prospects of the Company. The Company reserves the right to update, amend or supplement the information at any time in its absolute discretion (without incurring any obligation to do so).*

*Neither the Company, nor its related bodies corporate, officers, their advisers, agents and employees accept any responsibility or liability to you or to any other person or entity arising out of this presentation including pursuant to the general law (whether for negligence, under statute or otherwise), or under the Australian Securities and Investments Commission Act 2001, Corporations Act 2001, Competition and Consumer Act 2010 or any corresponding provision of any Australian state or territory legislation (or the law of any similar legislation in any other jurisdiction), or similar provision under any applicable law. Any such responsibility or liability is, to the maximum extent permitted by law, expressly disclaimed and excluded.*

*Nothing in this material should be construed as either an offer to sell or a solicitation of an offer to buy or sell securities. It does not include all available information and should not be used in isolation as a basis to invest in the Company.*

## **Future matters**

*This presentation contains reference to certain intentions, expectations, future plans, strategy and prospects of the Company.*

*Those intentions, expectations, future plans, strategy and prospects may or may not be achieved. They are based on certain assumptions, which may not be met or on which views may differ and may be affected by known and unknown risks. The performance and operations of the Company may be influenced by a number of factors, many of which are outside the control of the Company. No representation or warranty, express or implied, is made by the Company, or any of its directors, officers, employees, advisers or agents that any intentions, expectations or plans will be achieved either totally or partially or that any particular rate of return will be achieved.*

*Given the risks and uncertainties that may cause the Company's actual future results, performance or achievements to be materially different from those expected, planned or intended, recipients should not place undue reliance on these intentions, expectations, future plans, strategy and prospects. The Company does not warrant or represent that the actual results, performance or achievements will be as expected, planned or intended.*

## **Competent Person's Statement**

*The information in the report to which this statement is attached relates to Exploration Results, Mineral Resources or Ore Reserves compiled by Mr A Cooper, who is a Consultant and director to Comet is also a Member of The Australian Institute of Mining and Metallurgy, with over 30 years' experience in the mining industry. Mr Cooper has sufficient experience, which is relevant to the style of mineralisation and type of deposit under consideration and to the activity, which he is undertaking to qualify as a Competent Person as defined in the 2012 edition of the "Australian Code for Reporting of Exploration Results, Mineral Resources and Ore Reserves". Mr Cooper consents to the inclusion in the report of the matters based on his information in the form and context in which it appears.*

## **Exploration Targets**

*The terms "Target" or "Exploration Target" where used in this presentation should not be misunderstood or misconstrued as an estimate of a Mineral Resource as defined in the JORC Code and therefore the terms have not been used in this context. Exploration Targets are conceptual in nature, there has been insufficient exploration to define a Mineral Resource and it is uncertain further exploration will result in the determination of a Mineral Resource.*

## **US disclosure**

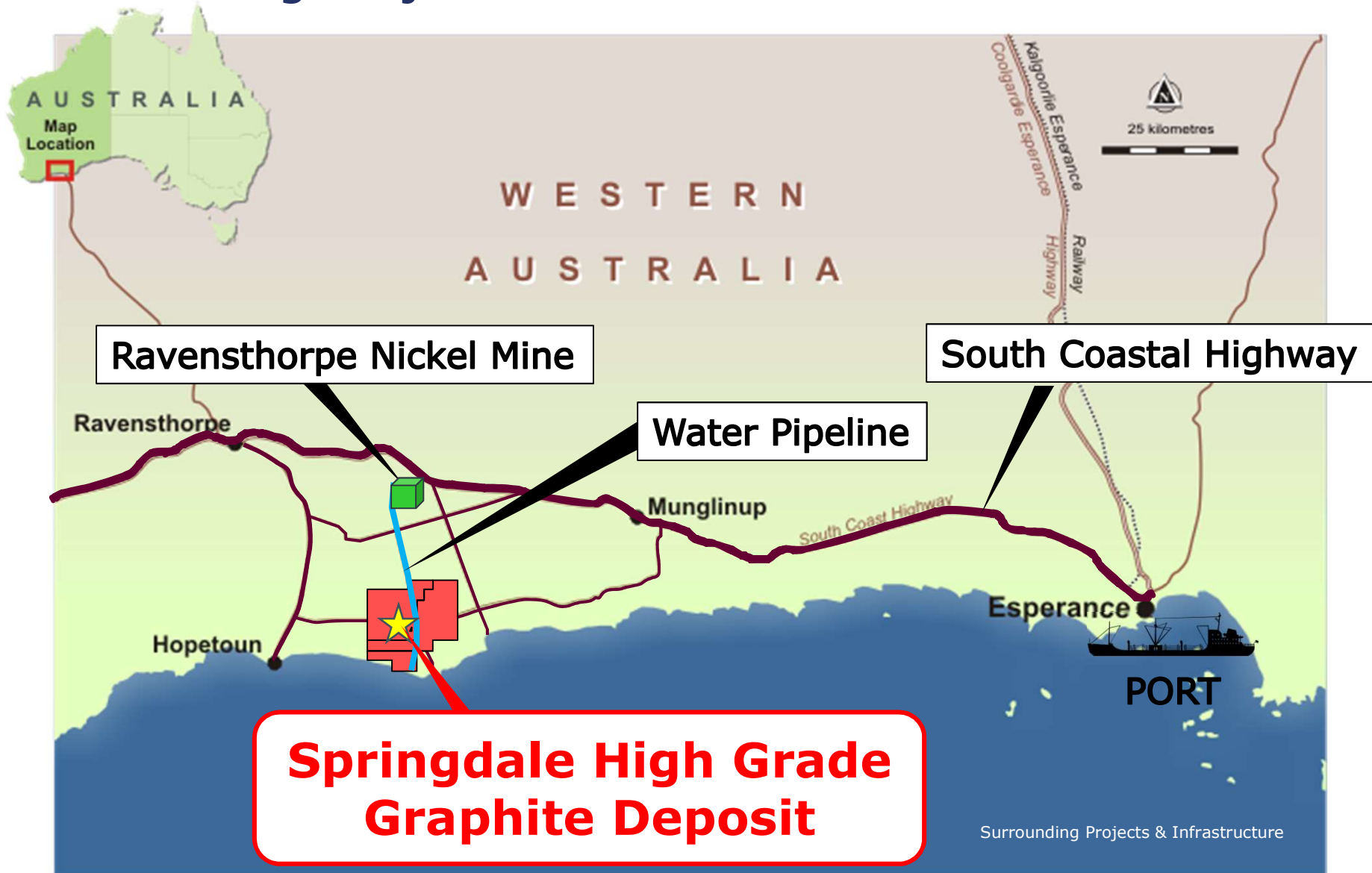
*This document does not constitute any part of any offer to sell, or the solicitation of an offer to buy, any securities in the United States or to, or for the account or benefit of any "US person" as defined in Regulation S under the US Securities Act of 1993 ("Securities Act"). The Company's shares have not been, and will not be, registered under the Securities Act or the securities laws of any state or other jurisdiction of the United States, and may not be offered or sold in the United States or to any US person without being so registered or*

# Comet Resources Ltd.

## **ASX: CRL**

Market Capitalisation	AUS\$6,800,000
Cash	AUS\$500,000
Fully Paid Ordinary Shares	206,000,000
Converting Securities	59,650,000
Last Price	AUS\$0.033
52 Week Price Range	\$0.032 - \$0.145
Top 20 Shareholders	48%
Board & Management	22%

## Surrounding Projects and Infrastructure





# Esperance Port



**Deepest port in the southern hemisphere  
Capable of handling Cape size vessels**

# Project Advantages

- Australian project - low sovereign risk and a stable operating environment.
- Freehold land title – no Native Title issues.
- Leverage –low market capitalisation with large upside.
- Infrastructure - access to water, power, roads, work force and port facilities.
- High grade graphite.
- Metallurgical testwork has shown that solid rock can be converted to graphene.
- Local work force – with mining experience.
- Supportive government - local and state.



Drill rig on site at Springdale Project



Collection of drill core samples at Springdale Project



# Why the Springdale Project



Springdale graphite flakes are connected,  
allowing the core to conduct electricity.

**This makes the Springdale ore very unique and valuable.  
Electrical Exfoliation is a low cost scalable method of  
producing graphene nano platelets.**

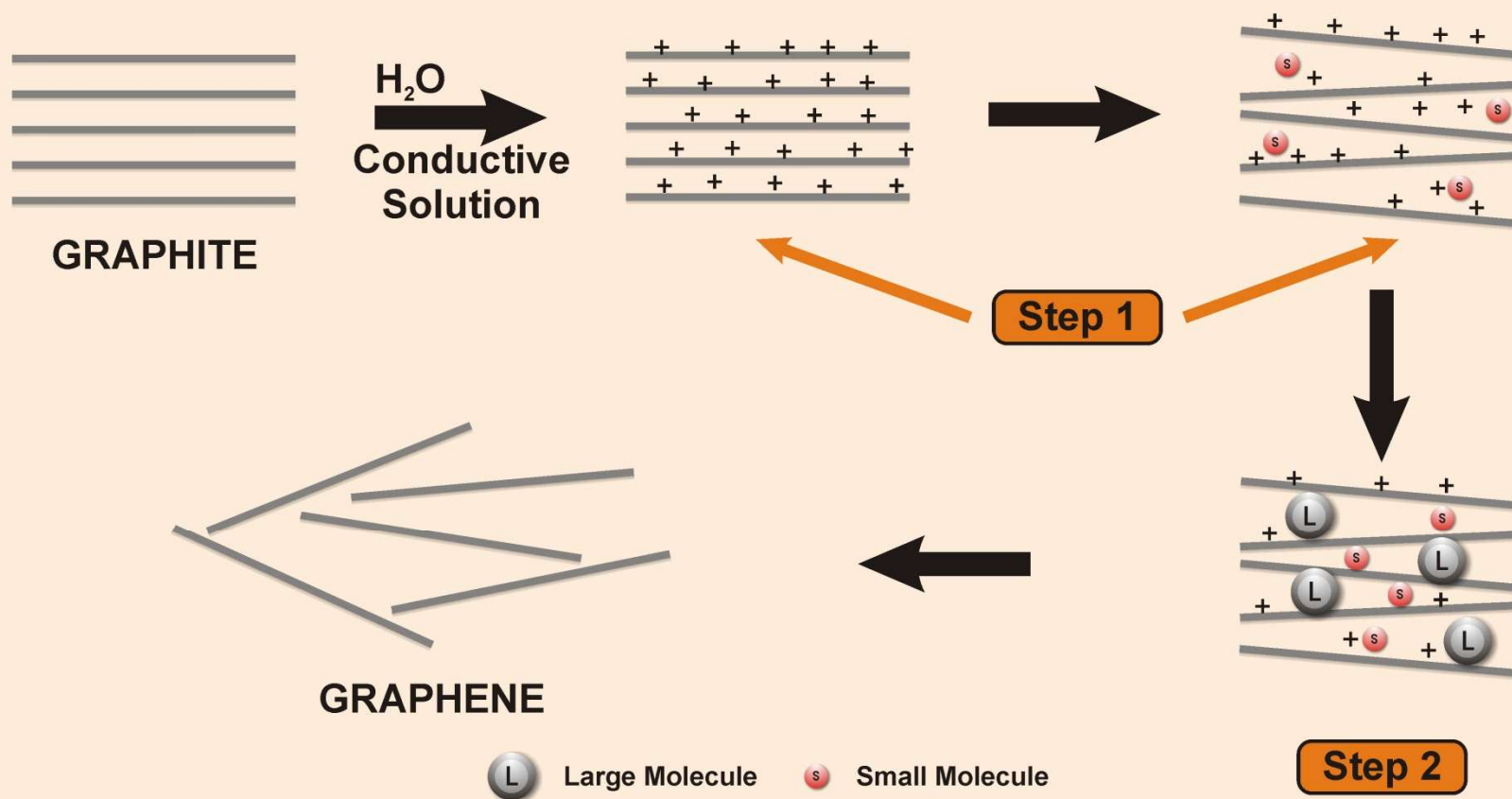
## Other Global Graphite Deposits



Stylised graphite ore from other deposits in the world.  
The graphite flakes are separated by non conductive gangue minerals.



## Electrical Exfoliation Process

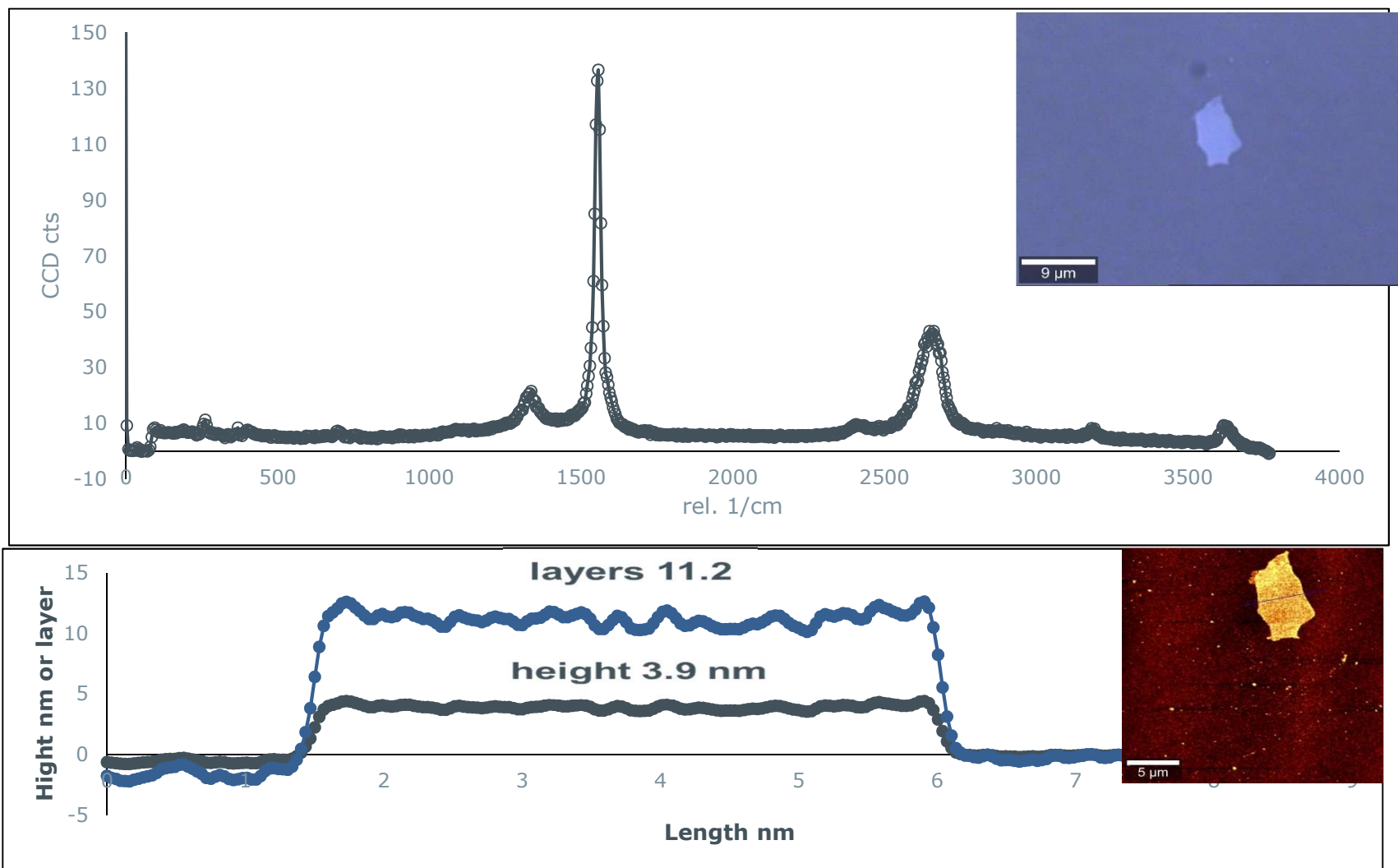


# Exfoliation Graphite to Graphene



**Bench Scale Graphene Plant**

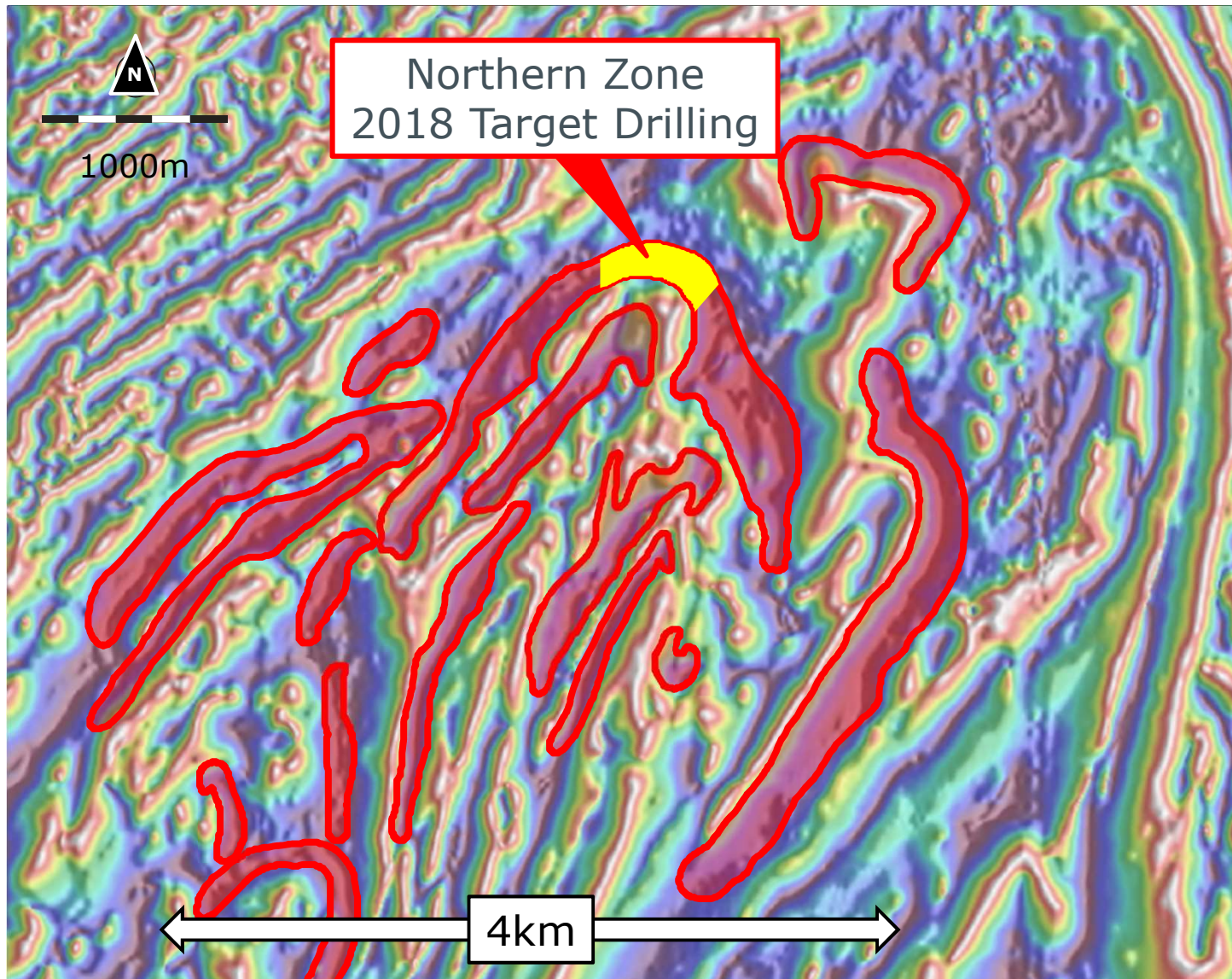
# Springdale Graphene



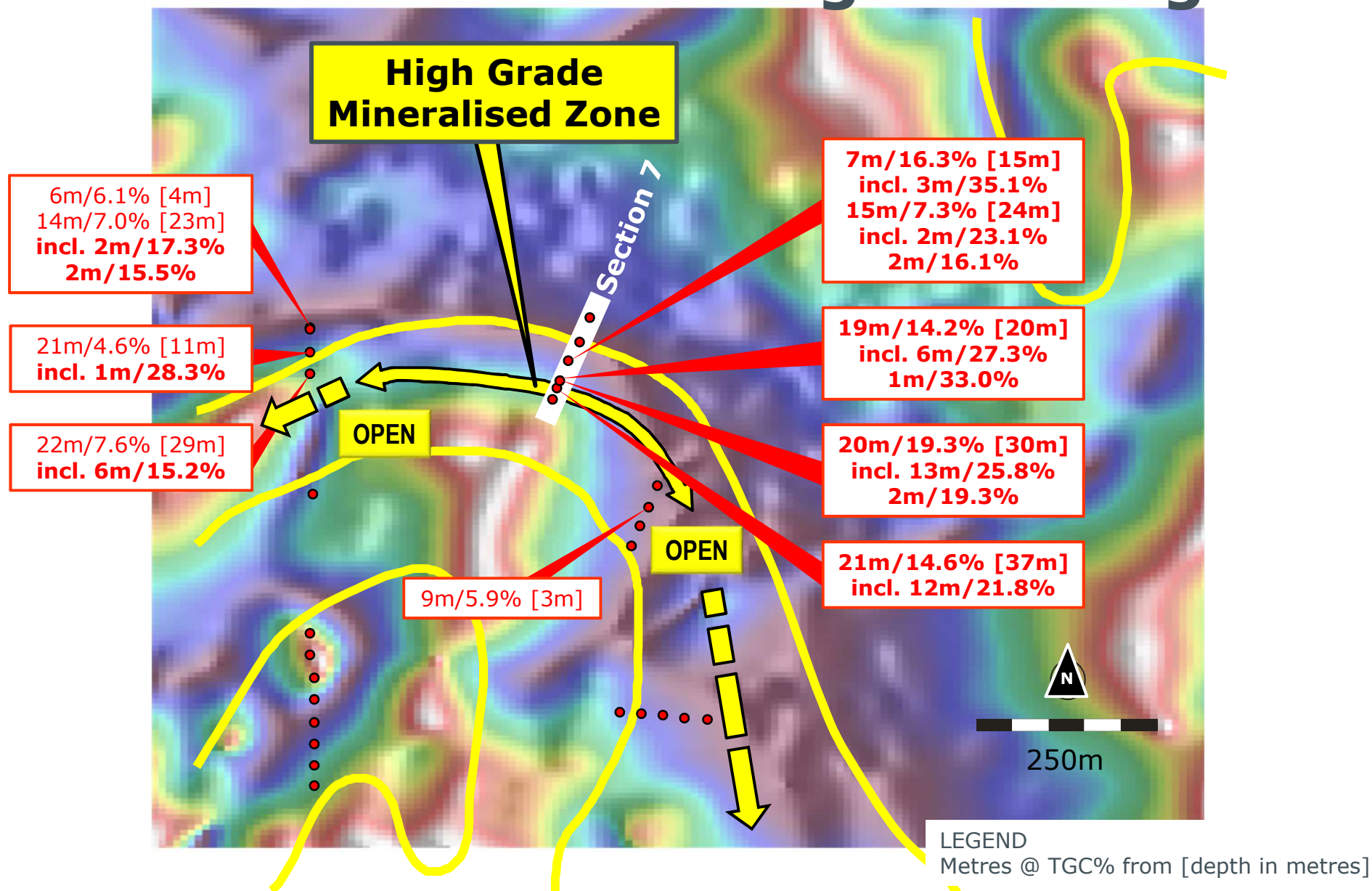
Raman plot and cross section plot for selected graphene nano platelet



# Graphite Horizon Aeromagnetic Targets

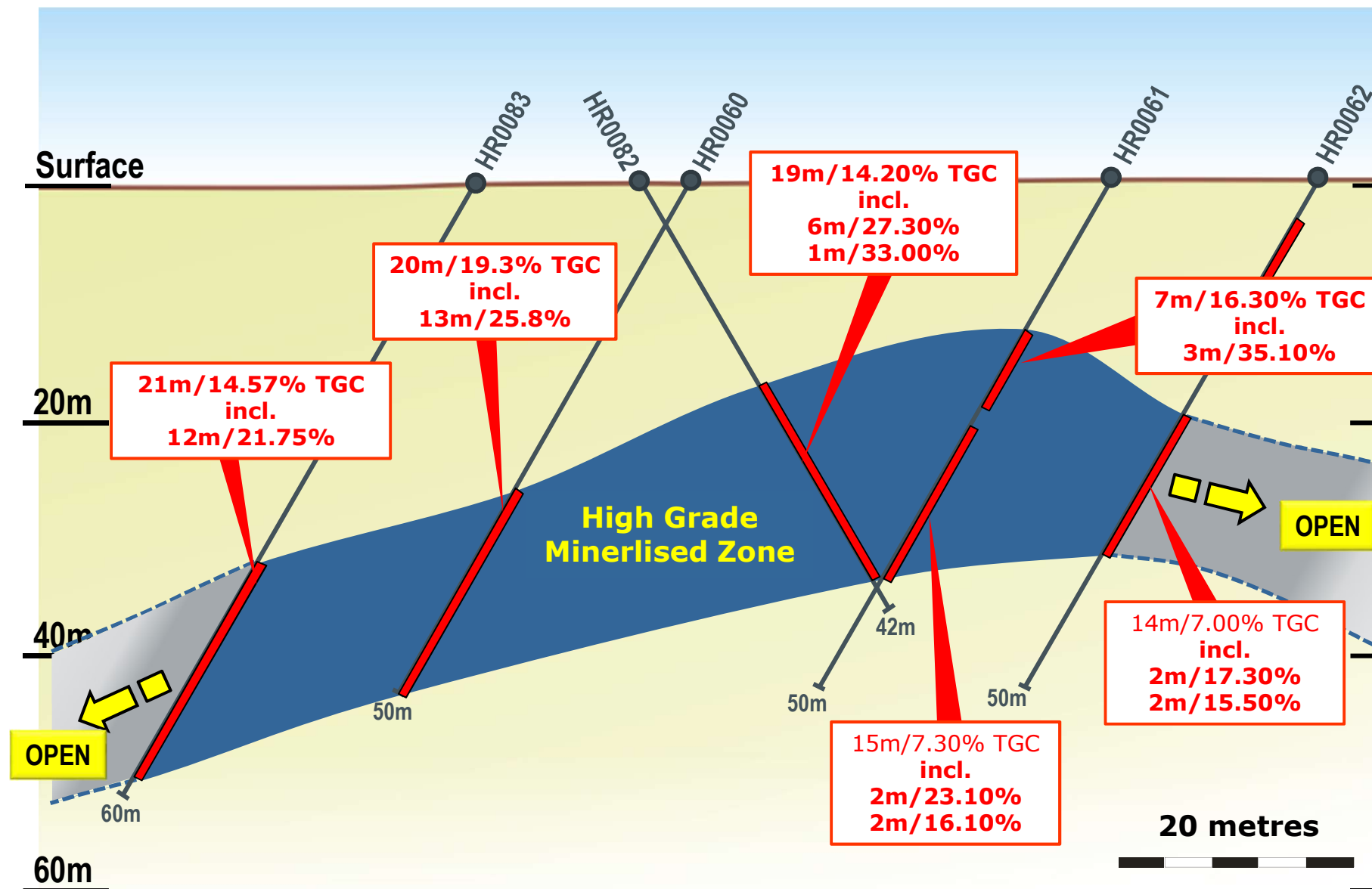


# Northern Zone Target Drilling



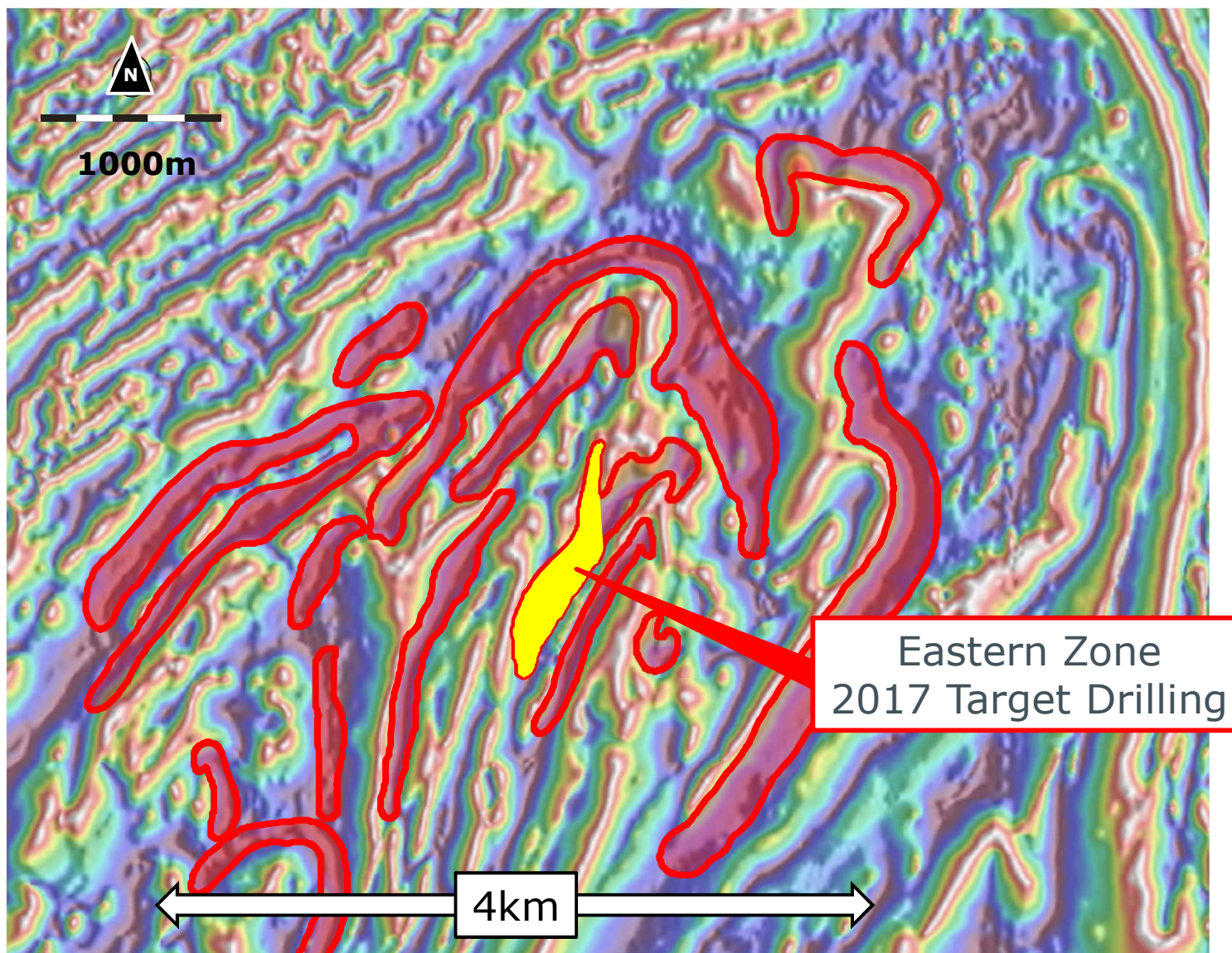


# Northern Zone Section Line 7

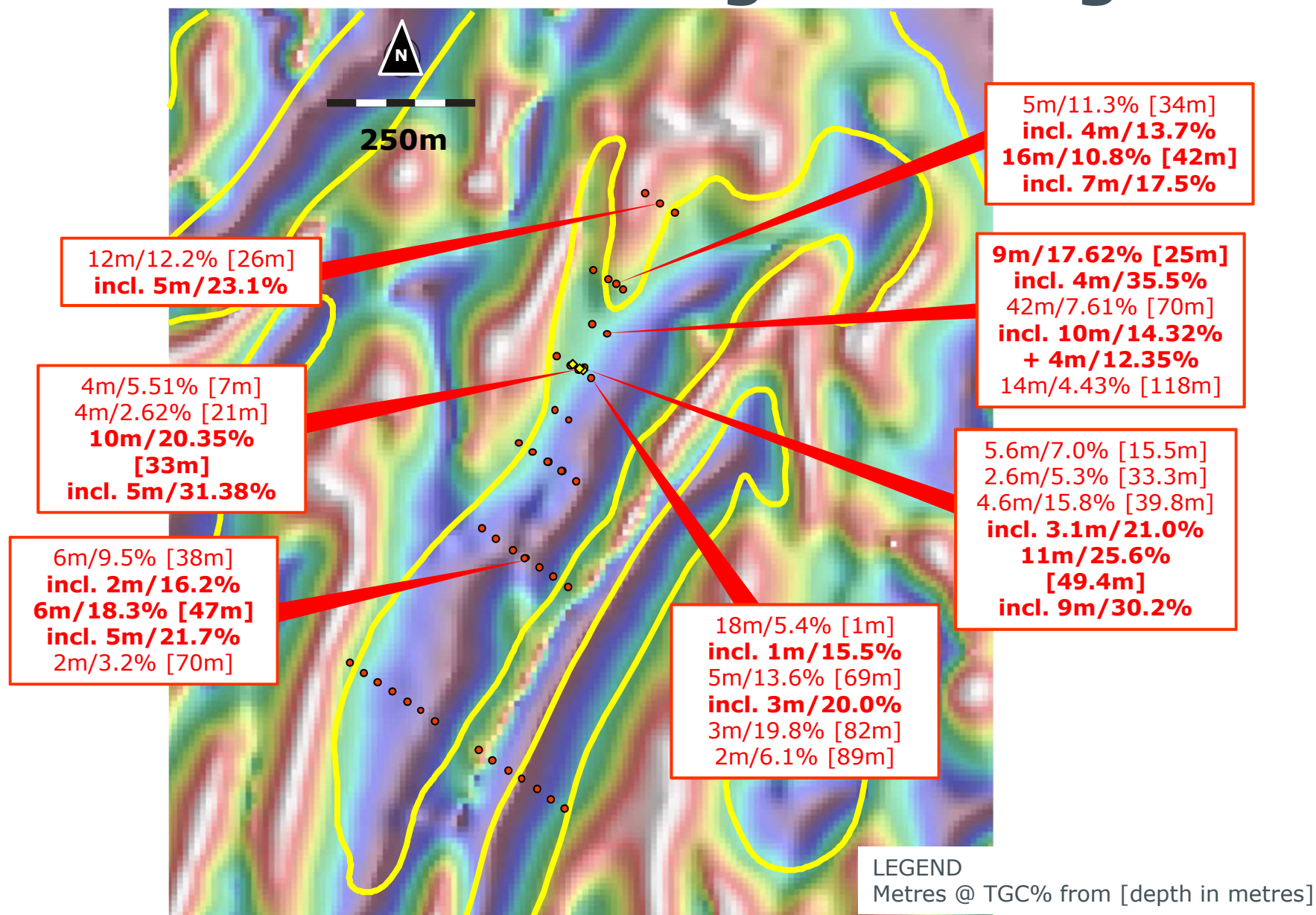




# Eastern Zone

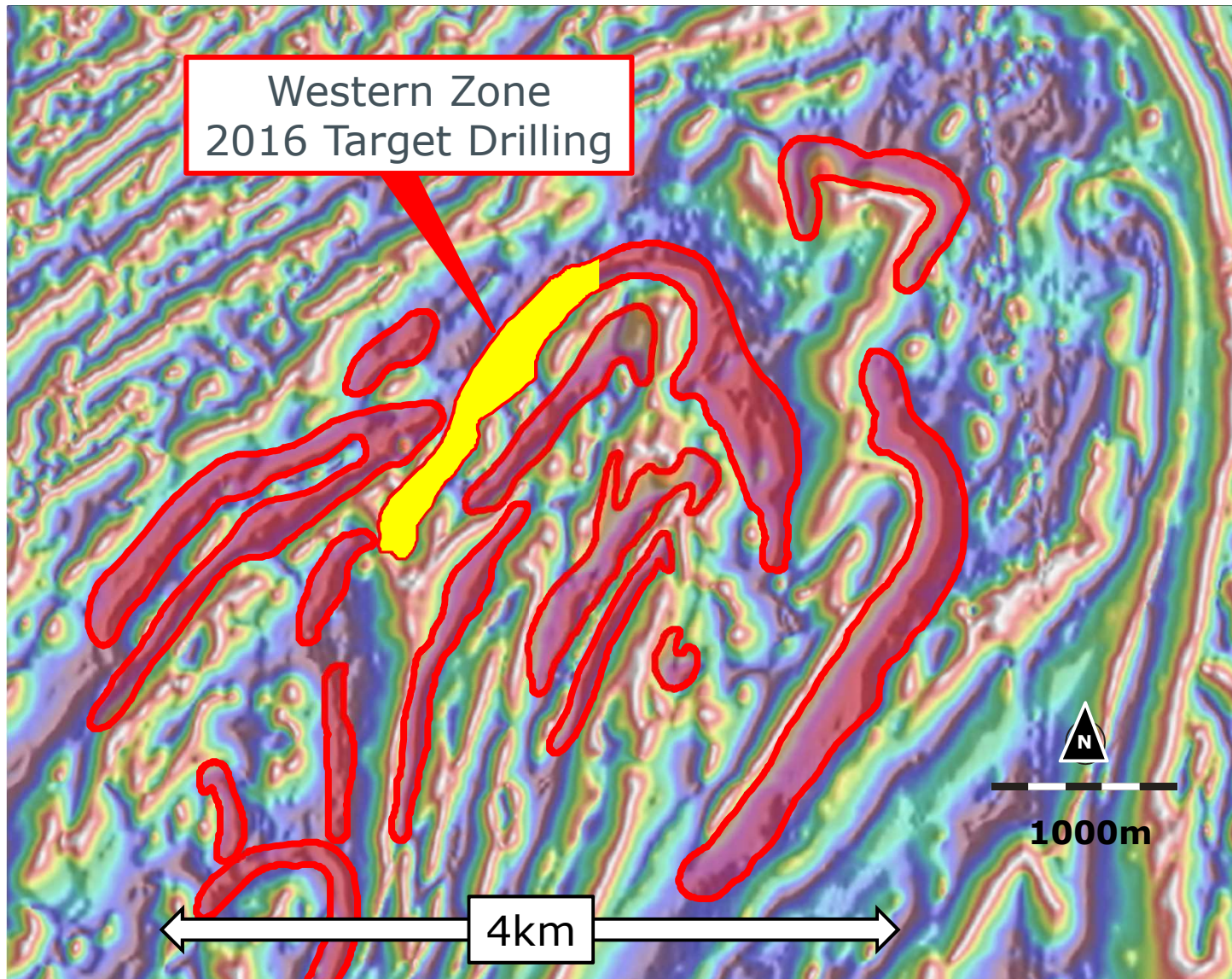


# Eastern Zone Target Drilling



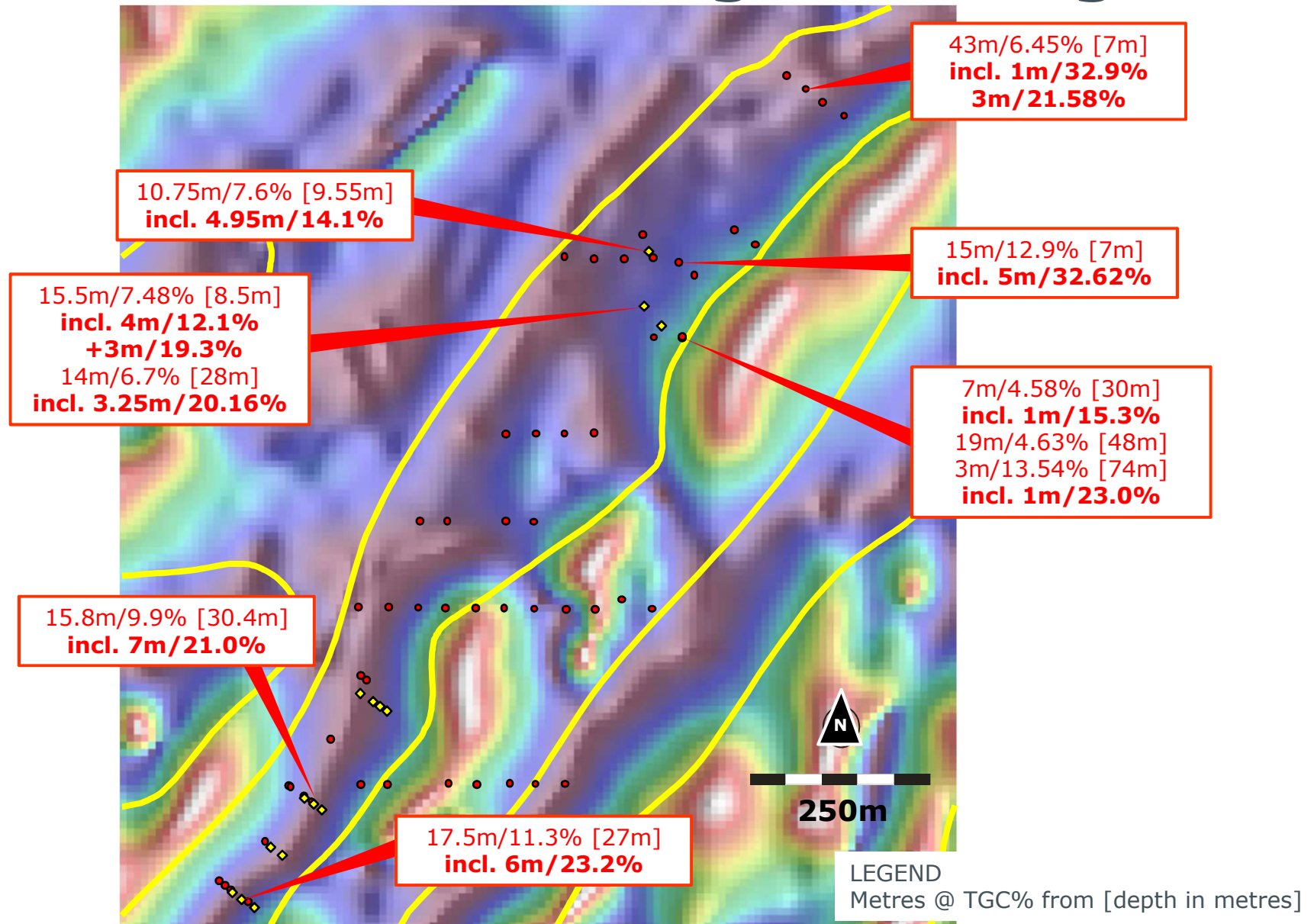


# Graphite Horizon Aeromagnetic Targets

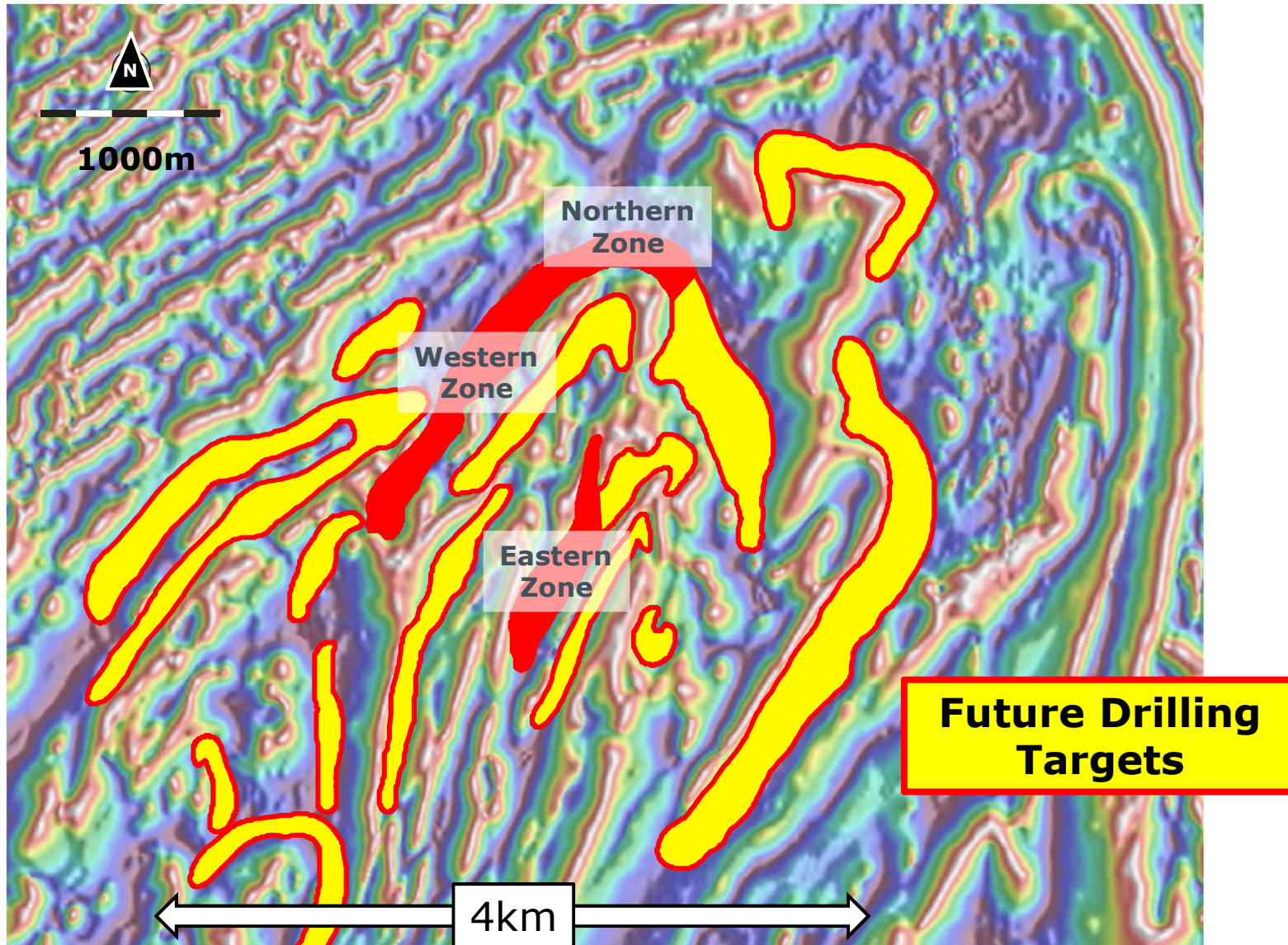




# Western Zone Target Drilling



# Graphite Horizon Untested Targets





# Graphene Mining Companies



Talga Resources Ltd  
SWEDEN  
Market Cap. 120M\$

First Graphene Resources Ltd  
SIRA LANKA  
Market Cap. 70M\$

Comet Resources Ltd  
AUSTRALIA  
Market Cap. 6M\$



# Contact Details

**Tony Cooper**  
**Managing Director**  
**Email:** [tony.cooper@cometres.com.au](mailto:tony.cooper@cometres.com.au)



**Address:** Unit 1, 4 Canning Road  
Kalamunda, WA 6104  
**Phone:** +61 (8) 9466 7770  
**Email:** [comet@cometres.com.au](mailto:comet@cometres.com.au)