

## RESULTS OF 2018 ANNUAL GENERAL MEETING

In accordance with ASX Listing Rule 3.13.2 and section 251AA(2) of the *Corporations Act 2001* (Cth), we advise details of the outcome in respect of each resolution before the meeting and numbers of valid proxy votes as detailed in the table below. All resolutions were passed unanimously on a show of hands.

Resolution	Number of votes for	Number of votes against	Number of votes abstaining / excluded	Number of discretionary votes	Total number of valid proxy votes cast
Adoption of Remuneration Report	2,906,555	233,358	1,500,700	42,200	4,682,813
Re-election of Mr Leonard Dean as a Director of the Company	4,392,255	223,358	25,000	42,200	4,682,813
Ratification of 600,000 Consideration Shares issued in the preceding 12 month period	4,376,061	239,552	25,000	42,200	4,682,813
Ratification of 8,568,674 Placement Shares issued in the preceding 12 month period	4,160,827	223,358	256,428	42,200	4,682,813
Share Placement Facility	4,392,255	199,858	48,500	42,200	4,682,813
Issue of Director Performance Rights to Mr Leonard Dean	2,870,782	295,980	1,473,851	42,200	4,682,813
Issue of Director Performance Rights to Mr Michael Schwarz	2,870,782	295,980	1,473,851	42,200	4,682,813
Issue of Director Performance Rights to Mr Duncan Chessell	2,800,782	365,980	1,473,851	42,200	4,682,813
Issue of Director Performance Rights to Mr Andrew Shearer	2,870,782	295,980	1,473,851	42,200	4,682,813
Approval of 10% Additional Placement Capacity ( <b>Special Resolution</b> )	4,417,255	223,358	0	42,200	4,682,813

### CAPITAL STRUCTURE

**Ordinary Shares**  
 Issued 50.8 M

**Options and rights**  
 Listed options 6.3 M @ 20c  
 Unlisted options 12.3 M @ 25c  
 Unlisted rights 2.5 M

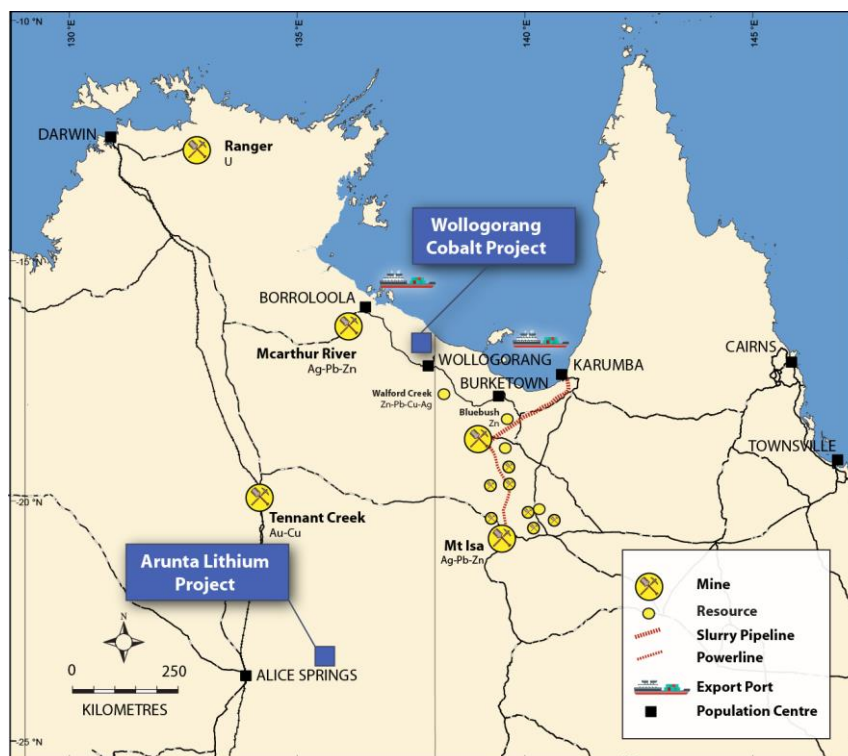
### Performance Shares

Class A 9.6 M  
 Class B 3.6 M

**Last Capital Raise**  
 24 April 2018 - SPP  
 \$0.6M @ 35c

### BOARD

Len Dean - Chair  
 Michael Schwarz - MD  
 Duncan Chessell - Exec Dir  
 Andrew Shearer - NED  
 Jarek Kopias - Co Sec



## Project Location

The Wologorang Cobalt Project is located in the far north-eastern corner of the Northern Territory, a mining friendly authority. The Project area is 180 km to the south-east of the population centre of Borroloola. The capital city of Darwin is 870 km to the north-west and the McArthur River Mine is approximately 150 km to the west-northwest.

## For further information please contact:

Michael Schwarz  
 Managing Director, Northern Cobalt Ltd  
 M: +61 402 101 790  
 E: mschwarz@northerncobalt.com.au