

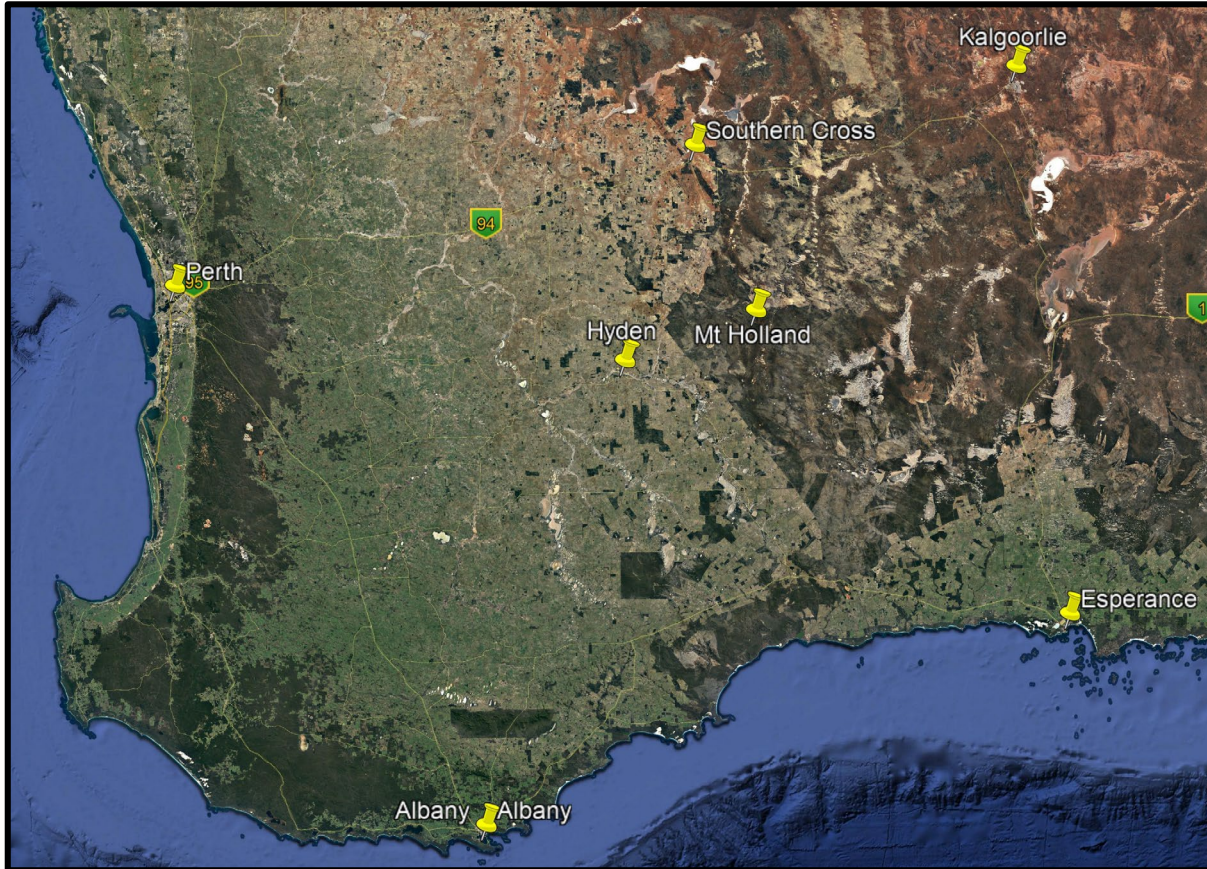
**HANNANS**<sub>LTD</sub>

ASX:HNR

**Annual General Meeting**  
Mt Holland Lithium Project Update

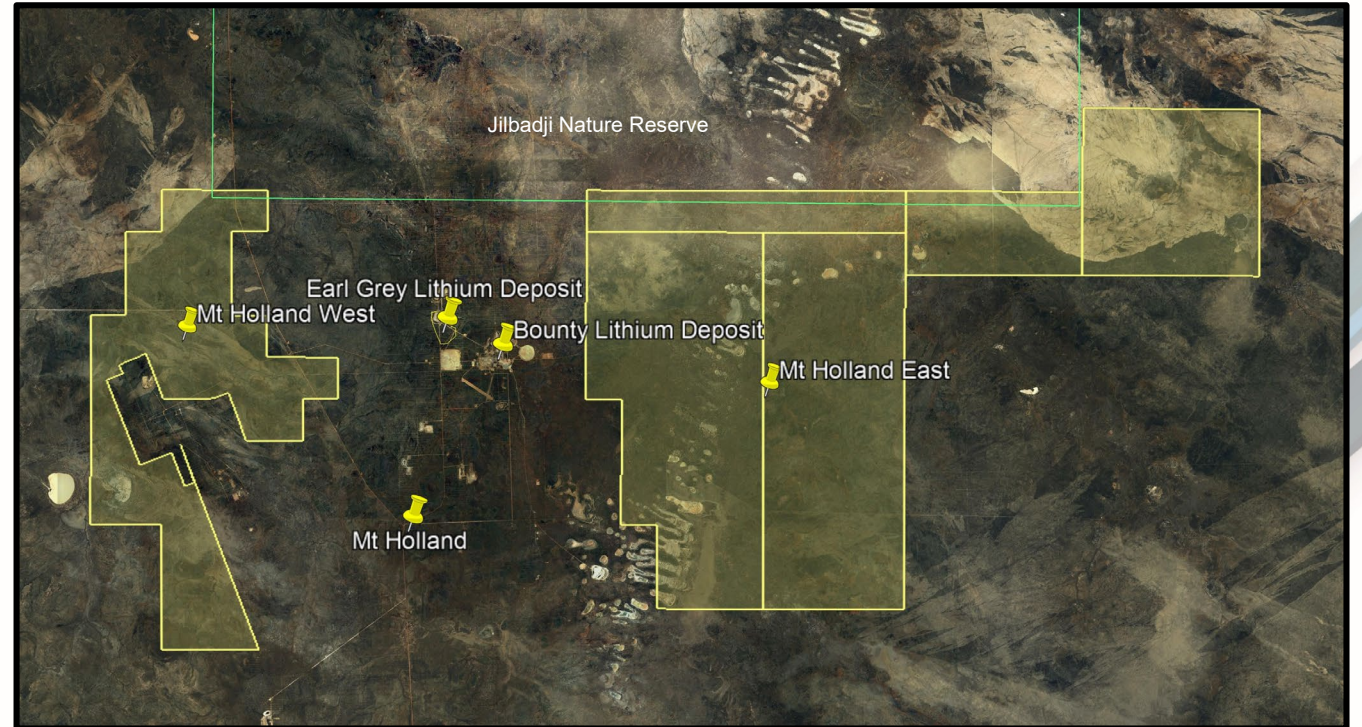
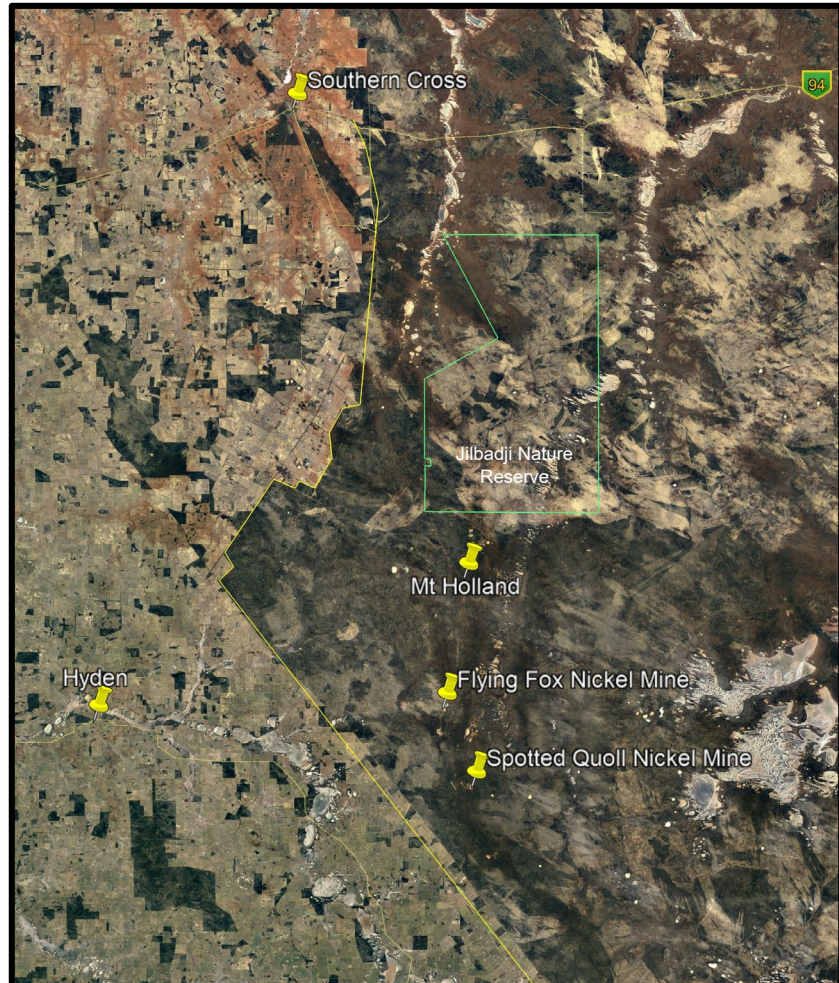
25 October 2018

# Summary



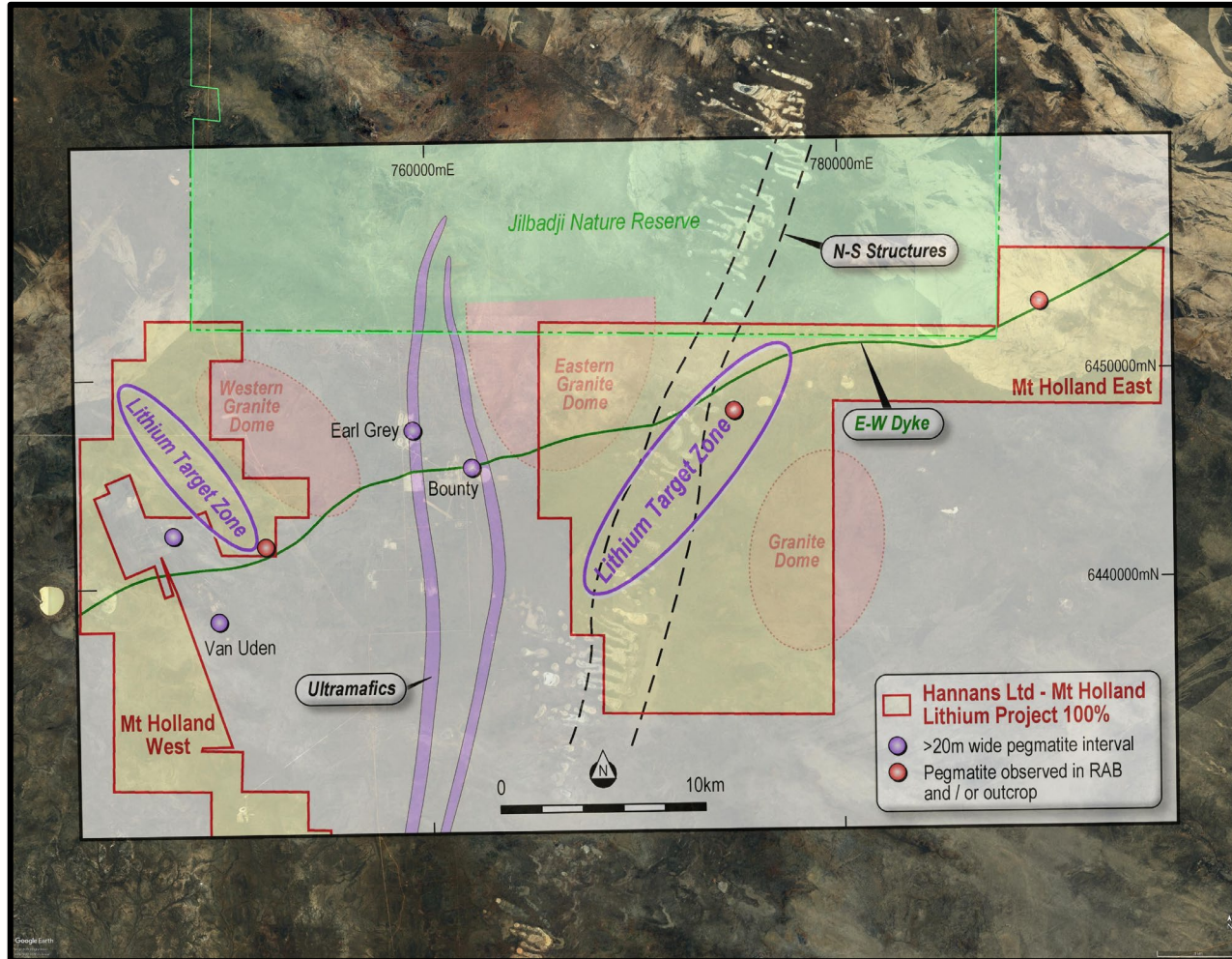
- ❑ Hannans' 100% owned Mt Holland Lithium Project is located adjacent to the 3<sup>rd</sup> largest hard rock lithium deposit in the world
- ❑ Hannans is following a systematic exploration process to identify pegmatites hosting economic grades and widths of lithium
- ❑ Hannans has \$3.6 million in cash and no debt
- ❑ Exploration success is expected to result in an immediate and sustainable increase in value for Hannans shareholders

# Mt Holland – Location Maps



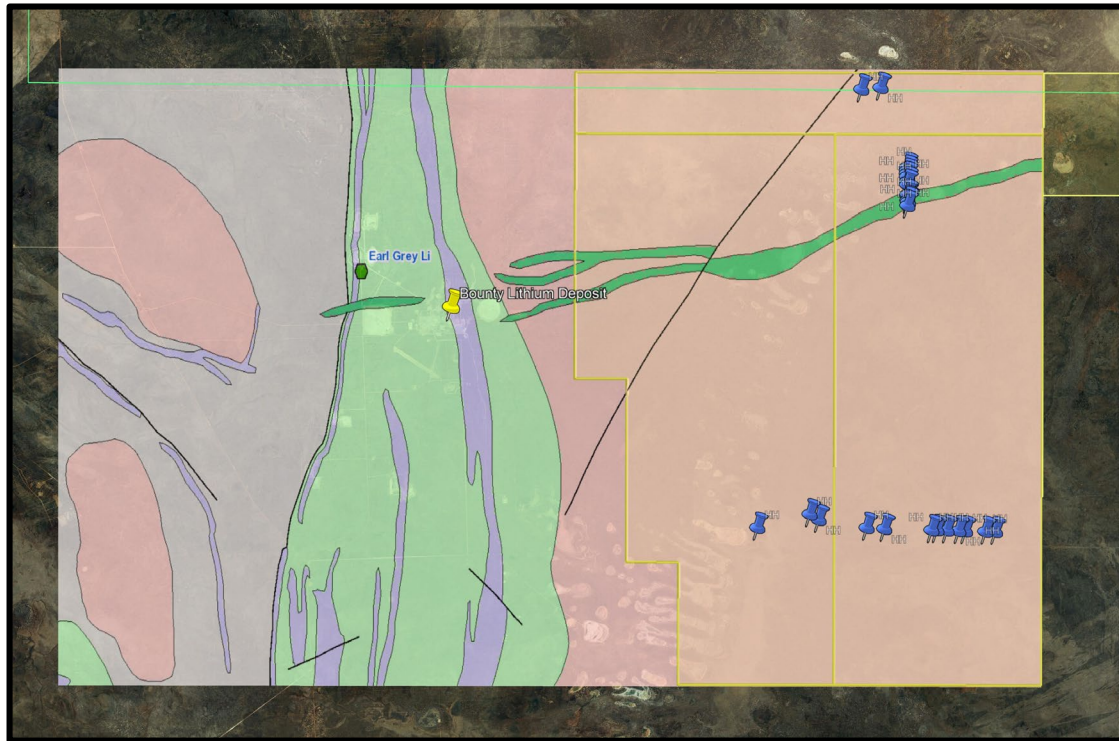
Hannans Mt Holland Project is located north of operating world class nickel mines and south of the nature reserve. The project is well serviced by local communities, services, roads and power.

# Lithium – Deposit Model



- Identify granites that may be the source of the pegmatites hosting lithium mineralisation
- Identify the margin of the granite in the field via mapping or drilling
  - This is important because ~4km from the margin appears to be the distance necessary to allow for cooling of the intruding pegmatites, and for differential crystallisation of exotic minerals including spodumene (an important lithium bearing mineral).
- Locate pegmatites in the field either via mapping or drilling
  - Note that the Mt Holland region is covered with transported sands which can be up to 40m thick, and the region comprises thick scrub and woodlands making identification of outcrop challenging
- Log and assay pegmatites intersected in drilling to identify economic grades and widths of lithium mineralisation
  - Note that grades  $>1\%$   $\text{LiO}_2$  (lithium oxide) are considered significant

# Mt Holland East – Start with Open File Data

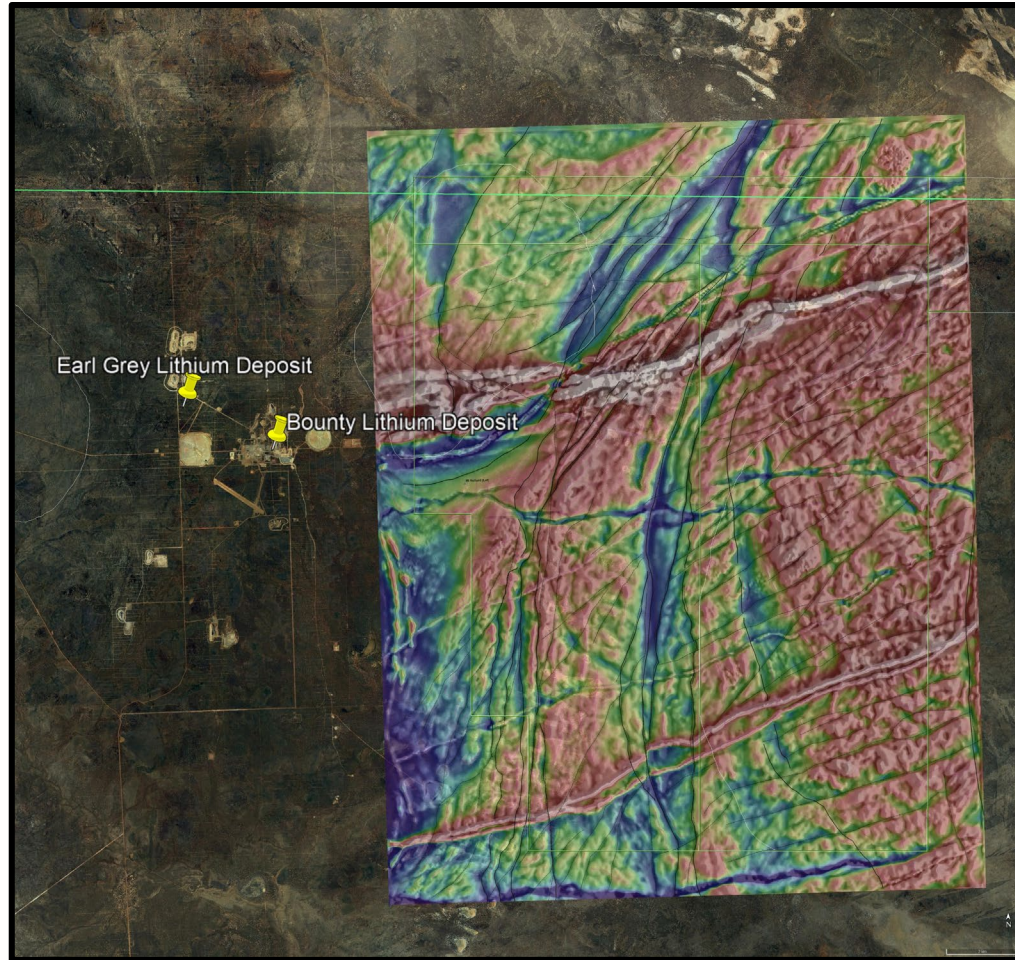


GSWA 1:250,000 interpreted bedrock geology and all historic drilling (blue icons)



GSWA open file radiometric image

# Mt Holland East – Generate New Data

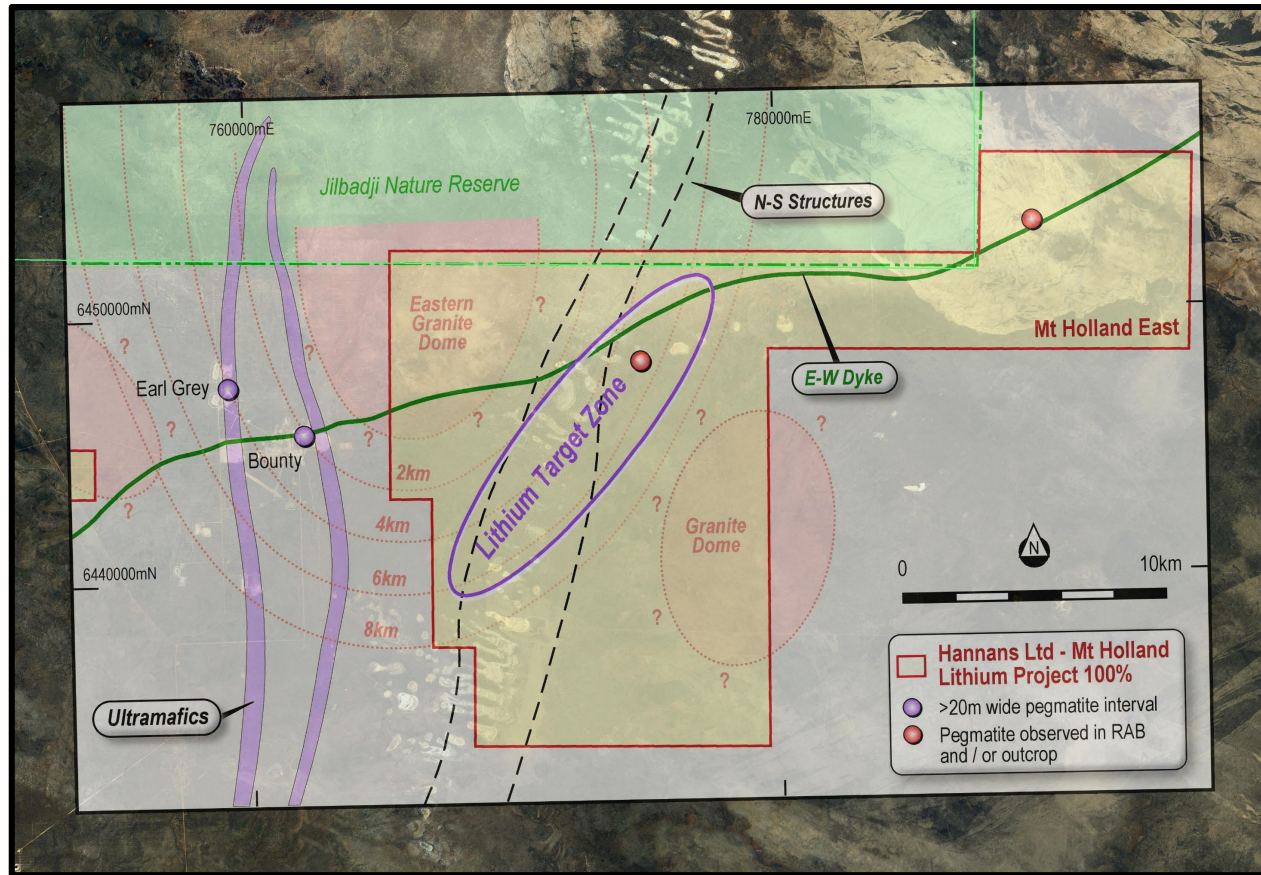


Processed airborne magnetic image from Hannans survey



Hannans structural interpretation based on recent survey

# Mt Holland East – Identify Target Zones & Test the Targets



MHE covers the western margin of the potential source granite to the pegmatites hosting the Earl Grey lithium mineralisation

Yellow icons show all recently completed drilling by Hannans (5,000 metres of aircore drilling to blade refusal); blue icons show all historic drilling

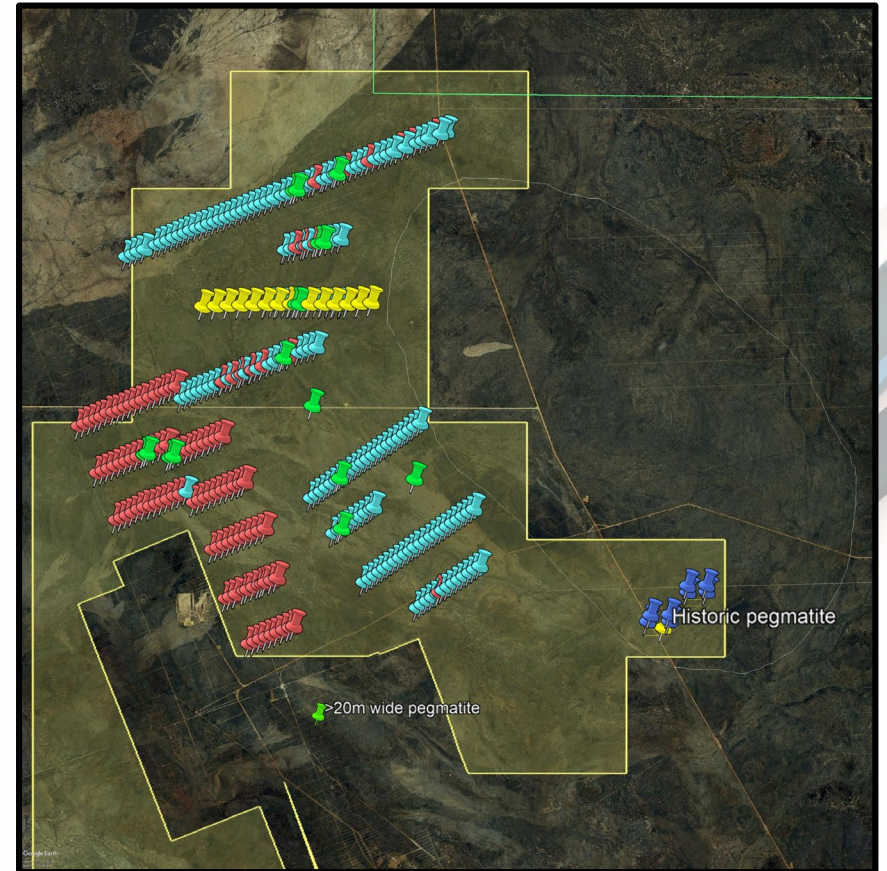
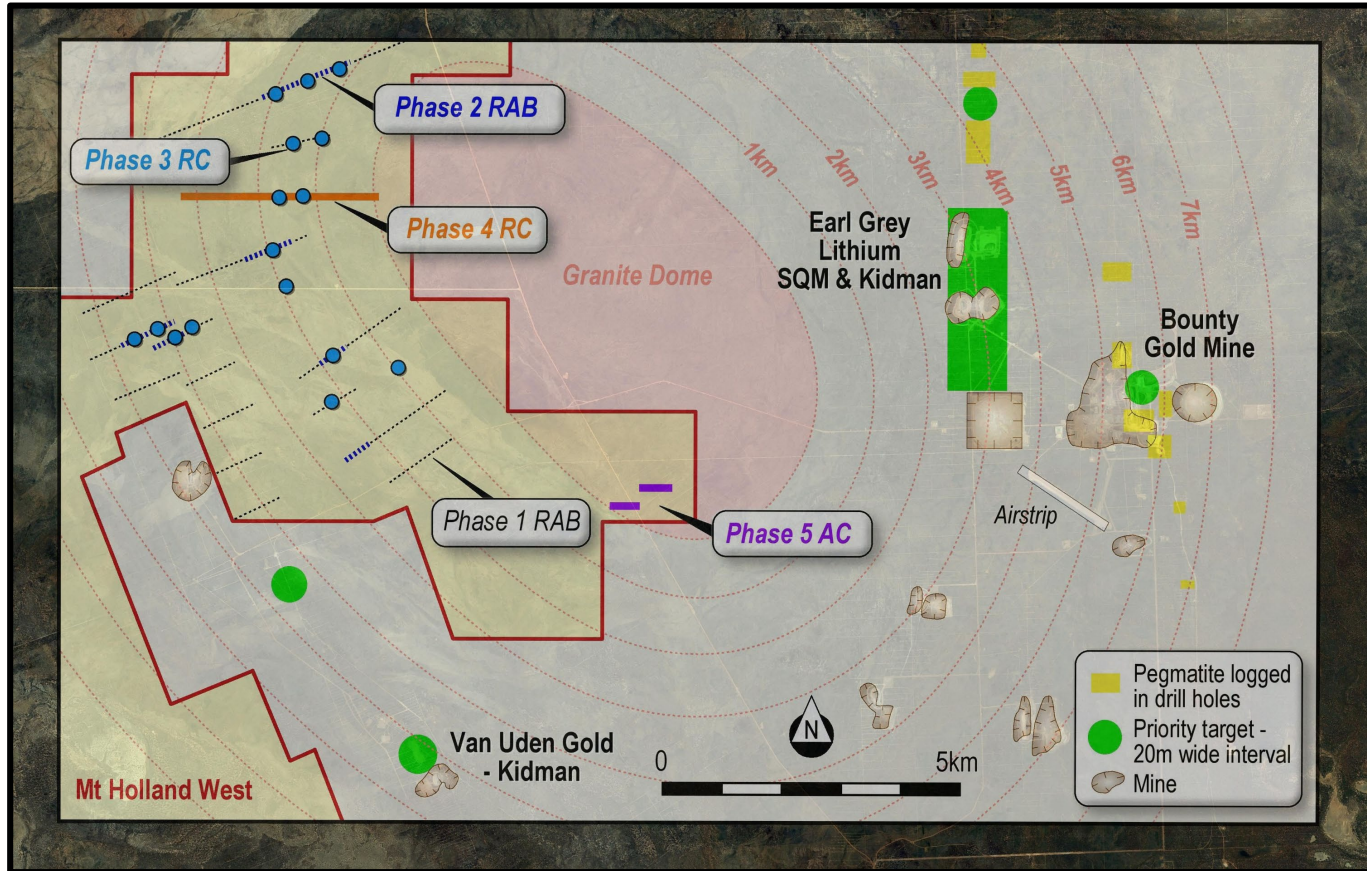
# Mt Holland East – Timetable

Year	Month	Comment
2017	December	Lodged applications for new tenements
2018	January	Completed detailed airborne geophysical (radiometric and magnetic) survey (7,566 line kms over ~260km <sup>2</sup> )
	February	Completed mapping using orthophotos and reviewed historic exploration data
	March	Completed structural interpretation using new geophysical dataset - identified major new target zone for lithium and gold represented by the intersection of (north-south) structures and a complex (east-west) dyke system within the proximity of margins of granite plutons
	April	Completed field trips to validate structural interpretation
	May	Completed desktop flora and fauna survey
	August	Tenements granted
	October	1st Phase of drilling completed (5,000 metres of aircore drilling to blade refusal)





# Mt Holland West – We've Only Scratched the Surface



MHW covers the western margin of the potential source granite to the pegmatites hosting the Earl Grey lithium mineralisation

All of Hannans drilling – Phases 1- 4 and 5 planned (dark blue)

# Mt Holland West – Timetable

Year	Month	Comment
2016	September	Acquired Mt Holland West Project
2017	April	1 <sup>st</sup> phase geochemistry drilling (3,093m, 240 holes to max depth of 12m)
	August (red icons)	2 <sup>nd</sup> phase geochemistry drill program (2,759m, 57 holes to max depth of 68m)
2018	March (green icons)	3 <sup>rd</sup> phase geochemistry and geology drill program (1,866m, 16 holes to max depth of 156m)
	June/July (yellow icons)	4 <sup>th</sup> phase geochemistry drill program (RC) – drilling consists of a traverse of angled drill holes down to recognizable bed-rock to define the geology of the area surrounding the granitic intrusion.
	November (?)	5 <sup>th</sup> phase geochemistry drill program (air core drilling to blade refusal) testing historic pegmatite – waiting on government approvals to enable commencement of program

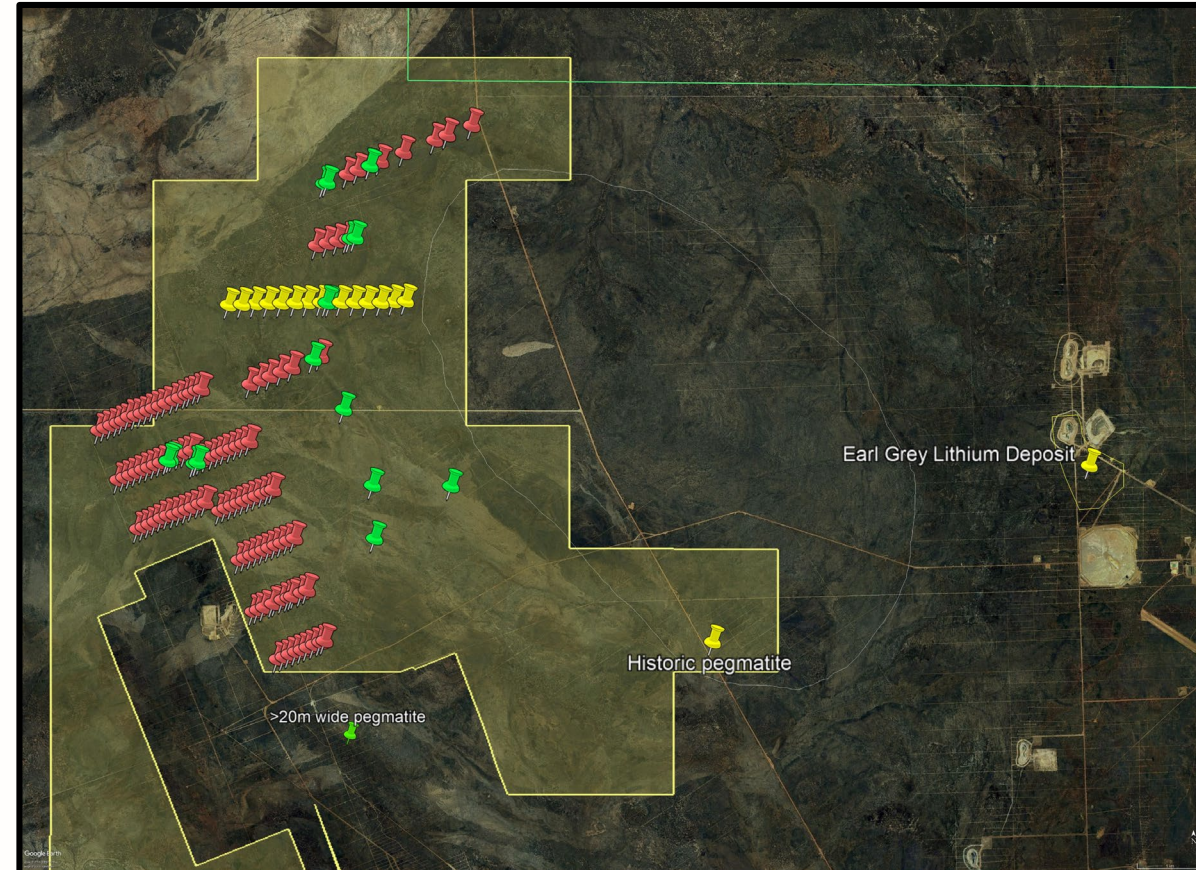
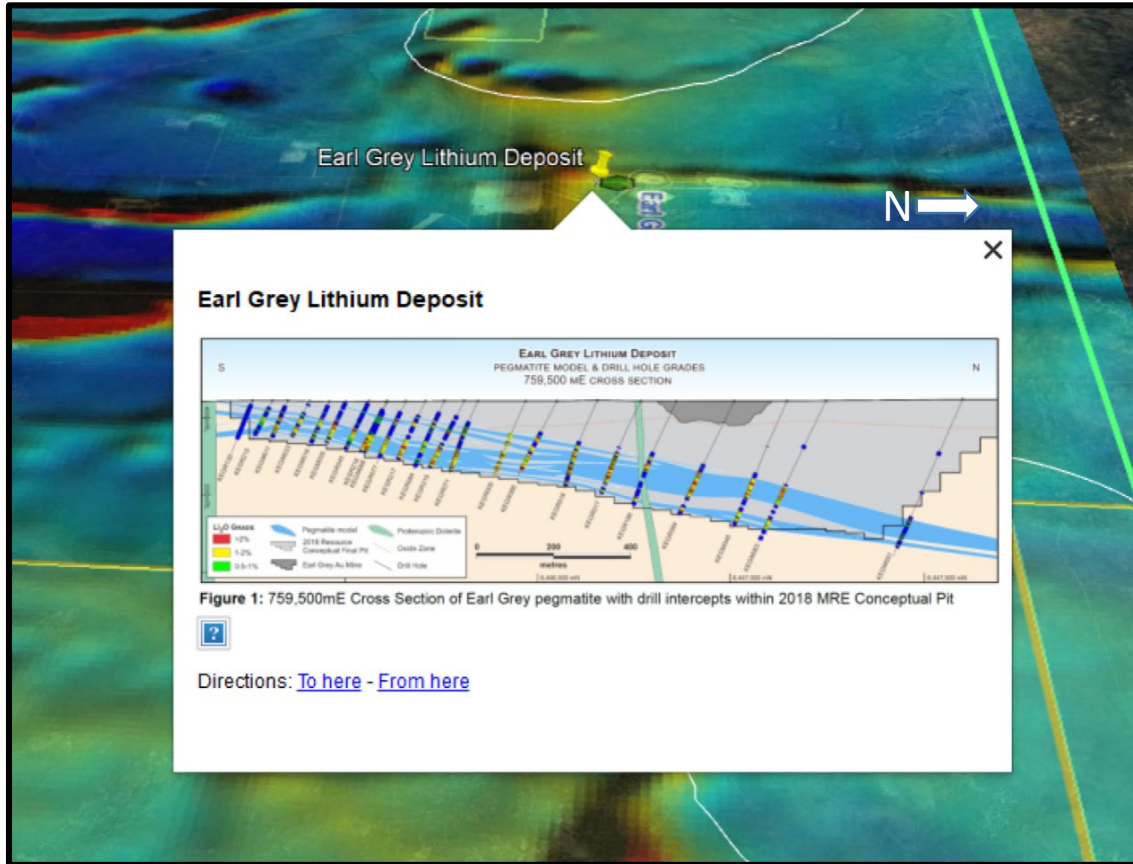
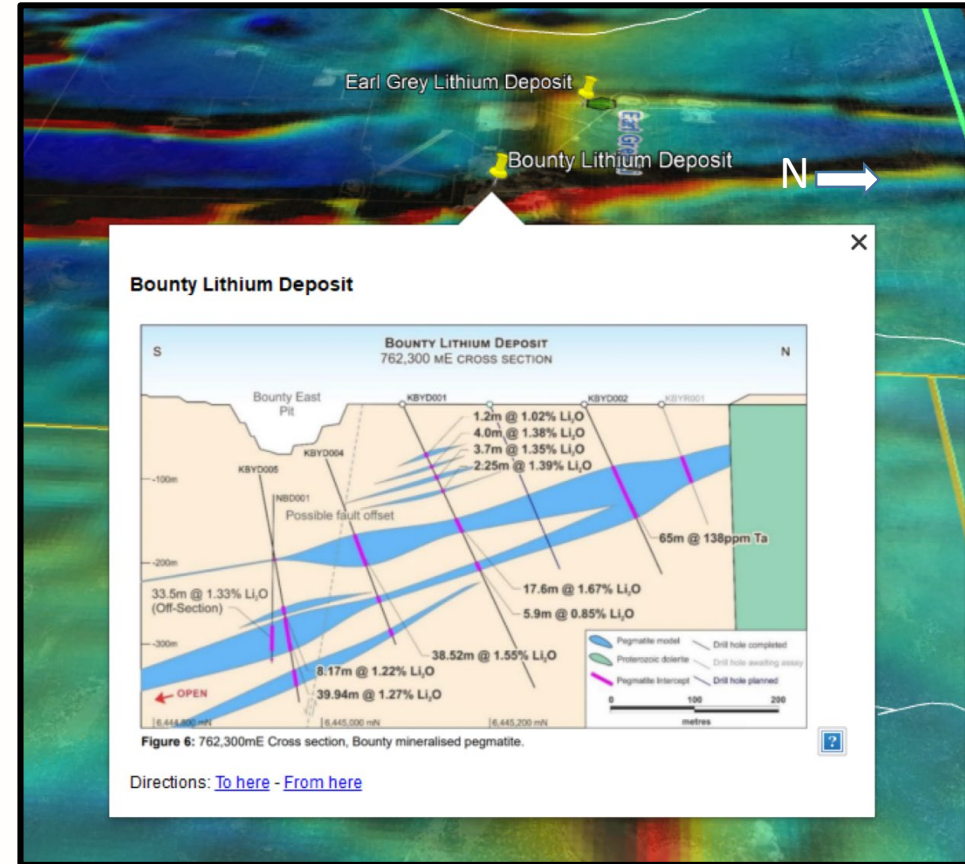


Image shows all Hannans drill holes deeper than 12m, shallow drilling generally ineffective in identifying pegmatites

# Earl Grey and Bounty Lithium Deposits – Noteworthy



Earl Grey dips North



Bounty dips South

These two examples highlight the irregularity / complexity of pegmatites in the region

# Directors & Management



## **Jonathan Murray, Independent Non-Executive Chairman**

- ❑ Director of Hannans Ltd (2010).
- ❑ Partner of Steinepreis Paganin
- ❑ Principal legal practice areas include equity capital markets, takeovers, project acquisitions and divestments, corporate governance, commercial law and strategy.



## **Markus Bachmann, Non-Executive Director**

- ❑ Director of Hannans Ltd (2012).
- ❑ Corporate finance professional
- ❑ Founding partner of Craton Capital (cratoncapital.com)
- ❑ Craton Capital awarded Fund Manager of the Year at the Mining Journal's "Outstanding Achievement Awards" during December 2010.



## **Clay Gordon, Non-Executive Director**

- ❑ Director of Hannans (2016).
- ❑ Bachelor of Applied Science (Geology) and a Master of Science (Mineral Economics). Member of the AusIMM and AIG.
- ❑ +25 years' experience in senior roles (operational, management and corporate) within large and small resource companies active in a range of commodities within Australia, Africa and South East Asia.



## **Damian Hicks, Executive Director**

- ❑ Director of Hannans Ltd (2002).
- ❑ Financial, legal and compliance qualifications.
- ❑ Principal responsibilities includes strategy formulation, team development, deal origination & execution, stakeholder relationships and capital raising



## **Amanda Scott, Non-Executive Director**

- ❑ Director of Hannans (2016).
- ❑ Exploration Manager for Hannans Group (2008-2016).
- ❑ Consulting Geologist with 13 years experience.
- ❑ Extensive experience in the Yilgarn and Pilbara regions of Western Australia and the Caledonides and Kiruna regions of Scandinavia exploring for gold, copper, nickel, PGEs, iron and manganese.
- ❑ Responsible for generating all of Hannans projects since 2008.

# Corporate Overview

<b>Fully paid ordinary shares</b>	<b>~ 1.98 billion</b>
Options (ex 0.5 – 2.7c)	125 million
Share price	1.2 cents
Market capitalisation	~ \$23 million
Top 20 holding	63%
Neometals Ltd shareholding	36%
Cash	~ \$3.6 M
Debt	Nil



# Contact Details

Jonathan Murray  
Chairman  
+61 8 9321 4000  
[jmurray@steinpag.com.au](mailto:jmurray@steinpag.com.au)

Damian Hicks  
Executive Director  
+61 419 930 087  
[damianh@hannansreward.com](mailto:damianh@hannansreward.com)

Mindy Ku  
Finance & Compliance Manager  
+61 8 9324 3388  
[mindyk@corpbservives.com](mailto:mindyk@corpbservives.com)

W: [www.hannansreward.com](http://www.hannansreward.com)



@hannansreward



Hannans Reward

# Important Disclaimer

This Document and the information contained herein and any presentation (collectively referred to as “Information”) is proprietary to Hannans Limited (“the Company” or “Hannans”).

This Document is intended to provide general background on the Company. It is not a disclosure document and is not intended as an offer, invitation, solicitation or recommendation with respect to any potential transaction.

Securities of micro cap exploration companies, typically involve a high degree of risk and as such, any investment in the Company must be considered as purely speculative. The Information in this presentation does not purport to cover all relevant information about any potential investment in the Company. Accordingly potential investors are advised to seek appropriate independent advice, if necessary, to determine the suitability of this investment. You should not solely act in reliance on the material in this presentation. This presentation does not purport to be all inclusive or to contain all information which its recipients require in order to make an informed assessment of the Company’s prospects. You should conduct your own investigation and perform your own analysis in order to satisfy yourself as to the accuracy or completeness of the information, statements, and opinions contained in this presentation before deciding whether to make an investment into Hannans.

The Document contains reference to certain intentions, expectations and plans of the Company. Those intentions, expectations and plans may or may not be achieved. They are based on certain assumptions which may not be met or on which views may differ. The performance and operations of the Company may be influenced by a number of factors, many of which are outside the control of the Company. No representation or warranty, express or implied, is made by the Company or any of their respective directors, employees, agents, advisers and consultants that any intentions, expectations or plans will be achieved either totally or partially or within a prescribed timeframe or that any particular rate of return will be achieved.

The Information disclosed relates to the proposed business of the Company at the date of this Document. Material information may have changed since the date the Document was compiled. No responsibility is accepted to advise any person of any change or update any of the Information.

Neither the provision of this Document nor any information contained in this Document or subsequently communicated to any person in connection with this Document is, or should be taken as, constituting the giving of investment advice to any person. By accepting this Document you acknowledge and agree to be bound by each of the foregoing statements.

The currency used throughout the presentation is Australian Dollars unless otherwise stated.

Hannans does not own any of the infrastructure in this presentation.

# Competent Persons Statement

The information in this document that relates to exploration results at Mt Holland is based on information compiled by Dr Bryan Smith, a Competent Person who is a Member of the Australian Institute of Geoscientists. Dr Smith is a consultant to Hannans Ltd and its subsidiary companies. Dr Smith has sufficient experience, which is relevant to the style of mineralisation and types of deposits under consideration and to the activity which has been undertaken to qualify as a Competent Person as defined in the 2012 edition of the Australasian Code for Reporting of Exploration Results, Mineral Resources and Ore Reserves (JORC Code). Dr Smith consents to the inclusion in the report of the matters based on his information in the form and context to which it appears.