

31 October 2018

## HGM QUARTERLY ACTIVITIES REPORT SEPTEMBER 2018 QUARTER

### HIGHLIGHTS

- Excellent geophysical results at the Leogang Exploration Target;
- New applications lodged for an expanded footprint around Gratlspitz;
- Non-core asset divested – Victory Bore sold to Surefire Resources NL (subject to SRN shareholder approval);
- Drilling started at Leogang Copper-Cobalt Project;
- Subsequent to the end of the quarter, drilling commenced at Schellgaden Gold Project.

### PLANS FOR CURRENT QUARTER

- Comprehensive drilling programs to commence to test the Exploration Targets\* at both the Schellgaden Gold Project and Leogang Copper-Cobalt Project will continue
- Ongoing data acquisition, desk top analysis and planning activities across all five Gold and all four Copper-Cobalt Projects

### CORPORATE

- At the end of the quarter, the Company holds A\$2.937 million in cash with no debt
- Subsequent to the end of the Quarter Mr Simon Francis became Non Executive Chairman and Adrien Wing Non Executive Director and Company Secretary. Mr Steve Formica moved to Non Executive Director and Mr David Palumbo retired from the board and resigned as Company Secretary effective November 2018.

*\*The potential quantity and grade of the Exploration Target is conceptual in nature, there has been insufficient exploration to estimate a Mineral Resource and it is uncertain if further exploration will result in the estimation of Mineral Resource.*

---

High Grade Metals Ltd	Issued Capital	Australian Registered Office	Directors
ACN: 062 879 583	452,937,867 Shares	Level 17, 500 Collins Street	Torey Marshall – Managing Director and CEO
ASX: HGM	100,500,000 Options	Melbourne VIC 3000	Simon Francis – Non Executive Chairman
	240,000,000 Perf Shares		Adrien Wing — Non Executive Director
			Steve Formica – Non Executive Director
			Hayden Locke – Non Executive Director

High Grade Metals Ltd (ASX: HGM) (“**HGM**” or the “**Company**”) is pleased to present its Quarterly Activities’ Report for the quarter ended 30 September 2018.

### Activities during the Quarter

Cash outflows during the quarter were sharply lower due to the delayed start up of drilling operations at the Leogang and Schellgaden projects.

Area	Forecast \$000’s	Actual \$000’s	Variance \$000’s
Exploration	1,414	419	995
Head office and GST/VAT	220	263	43
Sale of asset	-	(50)	(50)
Net cash outflow	1,634	632	1,002

### Activities during the Quarter at Schellgaden Gold Project

During the quarter significant preplanning activities were undertaken at Schellgaden in preparation for the commencement of drilling. The main focus of activities was the physical construction of a road to access the sites, preparation of drill pads, and the finalisation of logistics that supported the commencement of operations.

As part of the conditions attached to permitting, the Company undertook extensive water sampling of local springs and water sources. This was undertaken in addition to the environmental baseline study that the Company has commissioned.

### Activities During the Quarter at Leogang Cobalt, Copper, Nickel Project

#### Nöckelberg Cobalt, Copper and Nickel Prospect Geophysical Program

During the Quarter the Company completed a geophysical survey at the Leogang Project and the results, which are based on multiple data types (induced polarisation, spontaneous potential and resistivity on the main profiles, plus magnetic data around the prospect area), suggest that the old mine area does have a geophysical response, and that the anomalism continues east and west of the main adit.

The geophysical campaign was also designed to test the possible extensions to the old mine area, should an anomaly be detected; in this case a broad area, consistent with geological modelling, was shown to have anomalous responses, suggesting the target dolomites extend a considerable distance from the old mine area.



**Figure 1: The Leogang Exploration Area**

The program involved the acquisition of six profiles of a combined geo-electrical (DC), induced polarisation (IP), and electric spontaneous potential (SP) survey data (See Figure 2). In addition, a ground magnetic survey was acquired to supplement the other geophysical data (See Figure 3).

The program was intended to test the geophysical response of the mineralised section assumed to be recovered from the historic Nöckelberg mine. Specifically, the geology has high contrast rock types being the target dolomite layers and the adjacent graphitic shales. Theoretically a difference in both magnetisation of contained minerals, and conductivity of them creates a significant difference in geophysical response across the combined techniques used.

The survey included lines acquired over the known adits, as transposed in three dimensions as a calibration, and extended east and west of that main objective to provide insight on its possible extents.

As a result, known (assumed), mineralisation still present subsurface appears as a strong signal on the main calibration profile, and, by extension, the derived anomaly pattern was found to replicate on other profiles acquired (Figure 4 – 3d model and Figure 7 Profile 3).

Where the combined DC information was not acquired, magnetic contrast in the units, relative to the known areas of calibration, suggest that the target units extend further to the east and west than previously presented.

Based on the results, the complex anomalies of potentially mineralised dolomites in the Nöckelberg prospect comprise:

- 1) SP – low to very low readings;
- 2) DC – slightly higher resistivity than the graphitic shales;
- 3) IP – very strong signal
- 4) Magnetics – elevated versus the surrounding rock

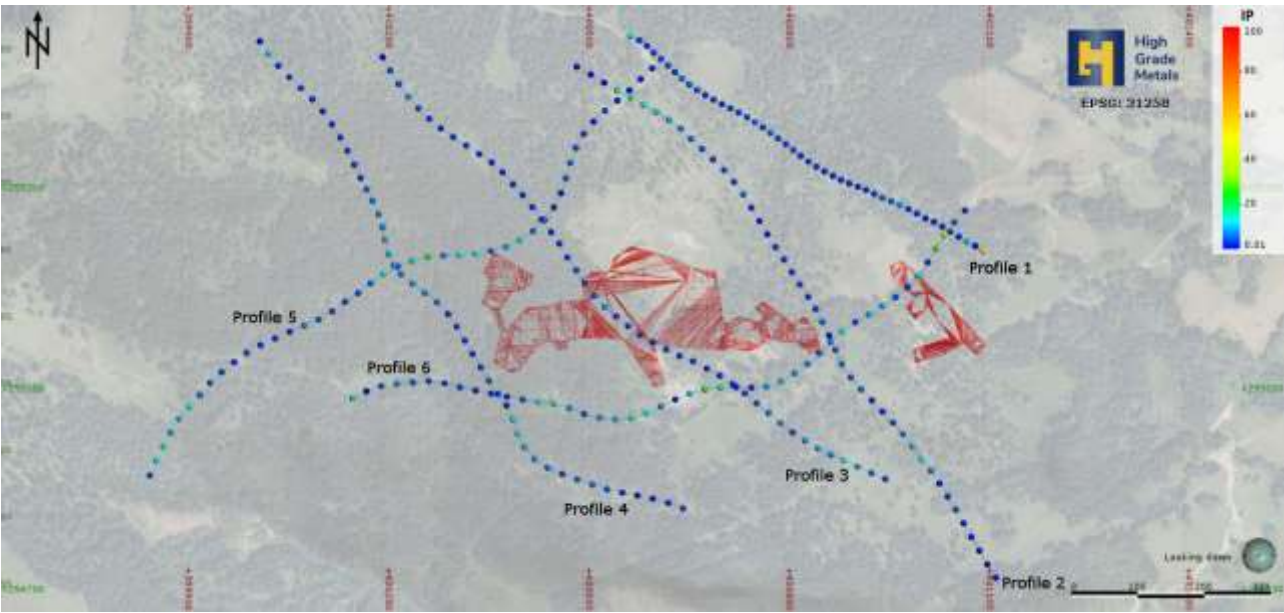


Figure 2 – Location map of DC, IP and SP survey profiles

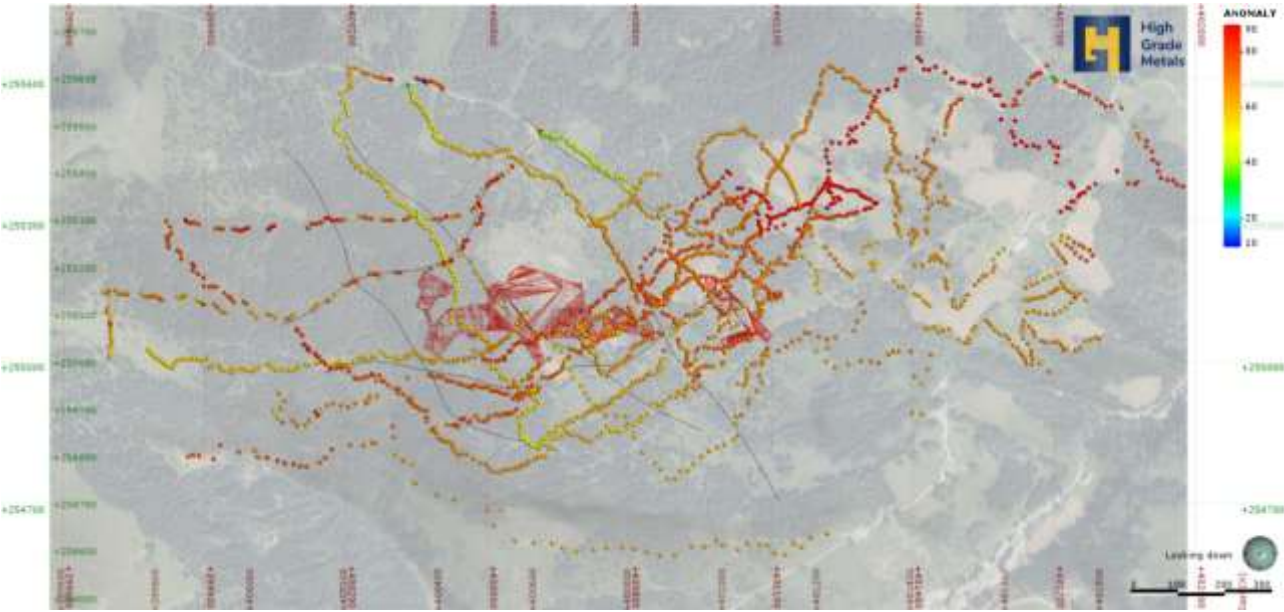


Figure 3 – Location map of ground magnetic survey points



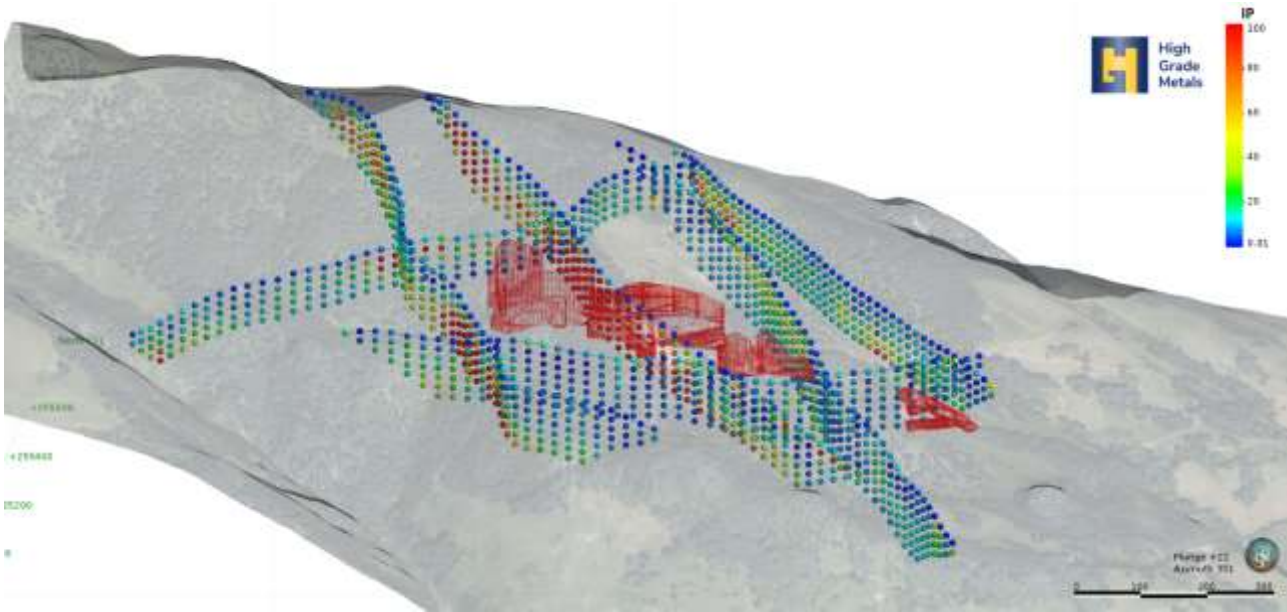


Figure 4 – 3D Drape of IP survey over Nöckelberg

All IP profiles acquired are inserted below for reference

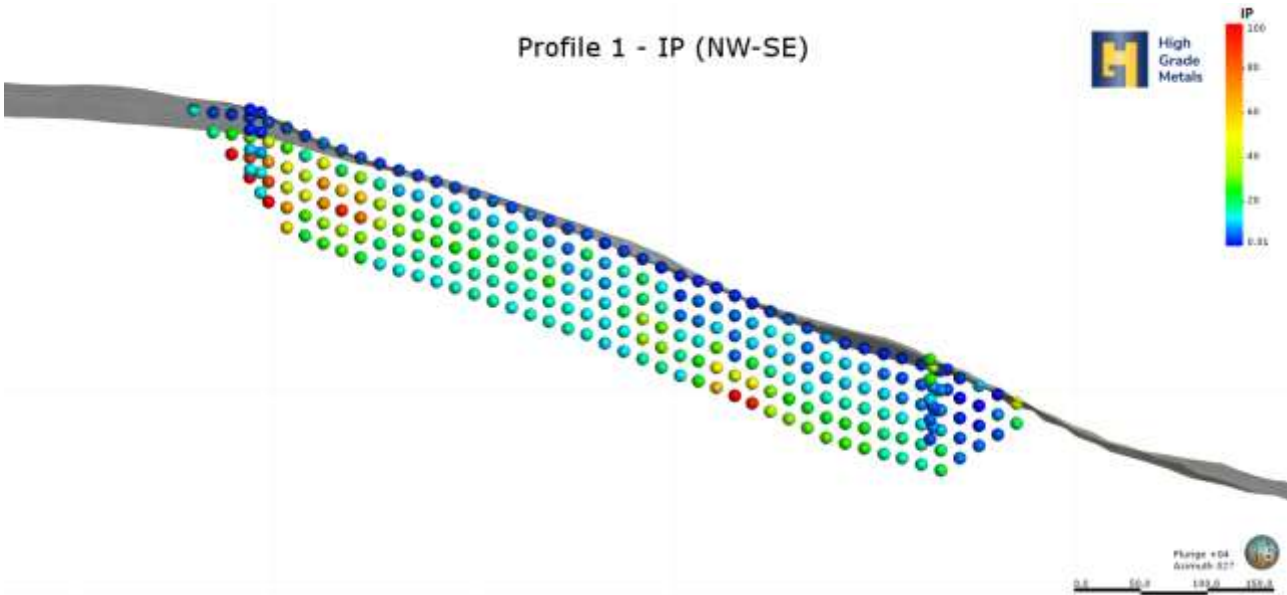


Figure 5 – IP Profile 1

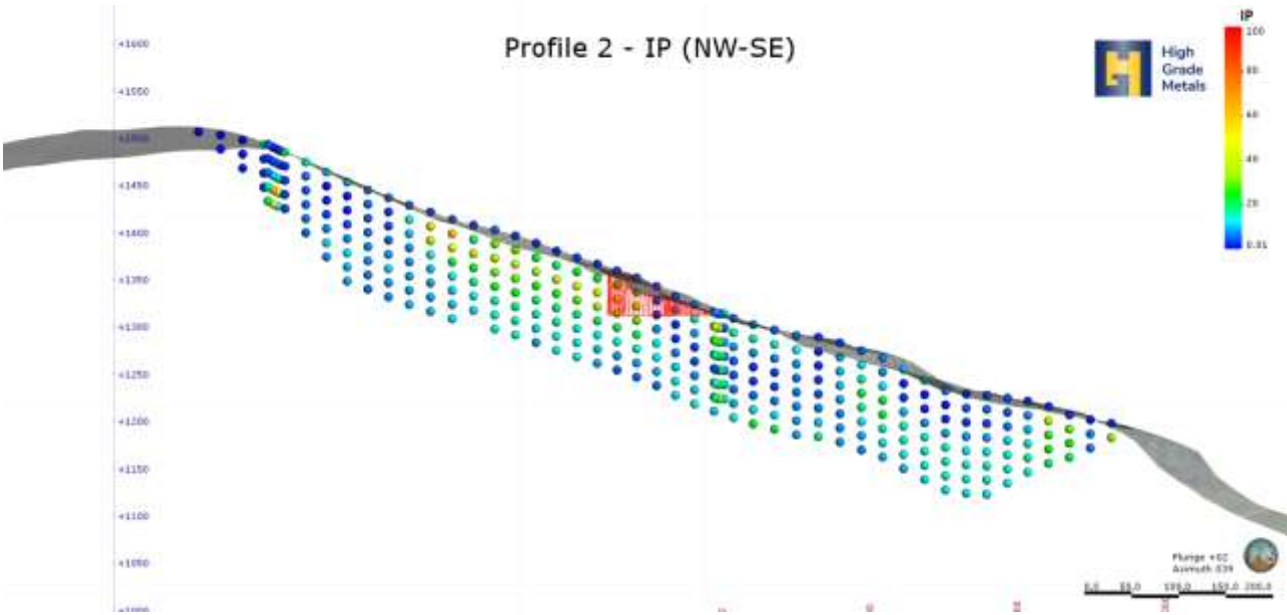


Figure 6 – IP Profile 2

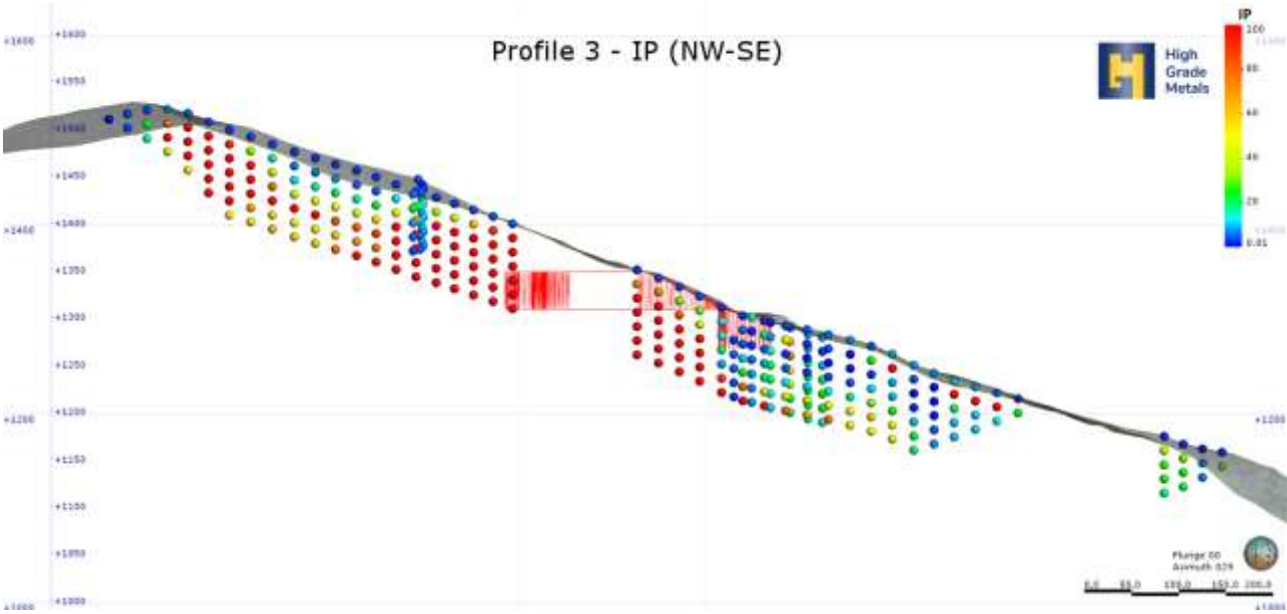


Figure 7 – IP Profile 3

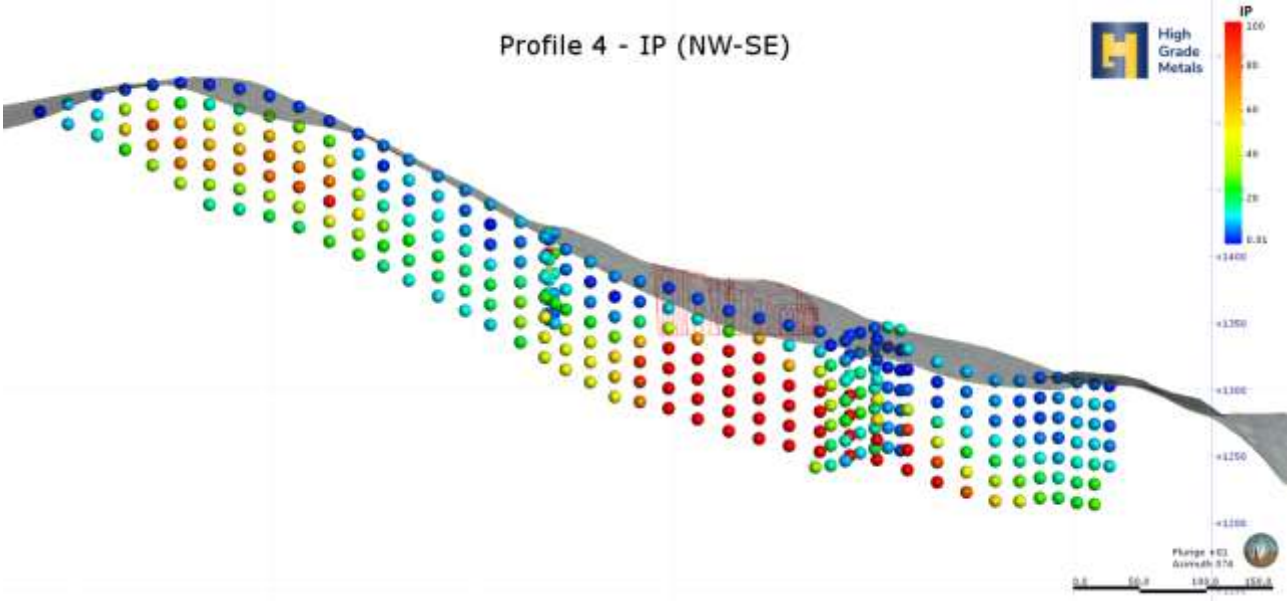


Figure 8 – IP Profile 4

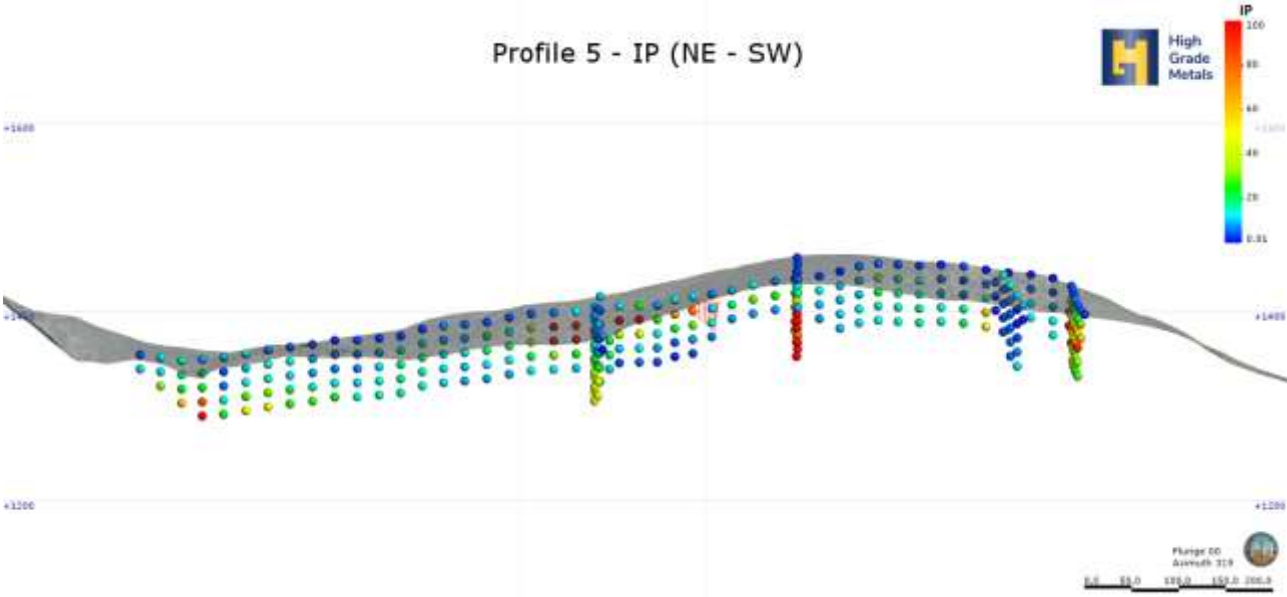
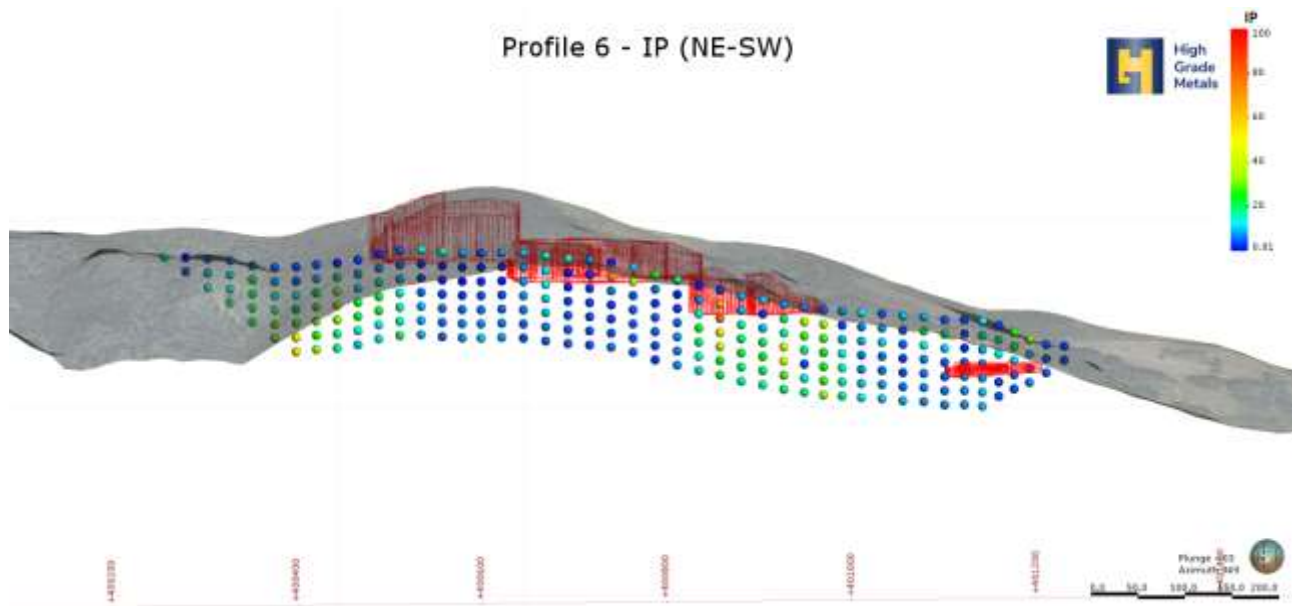


Figure 9 – IP Profile 5



### Drilling

The full program is anticipated to take between 4 and 6 weeks to complete depending on mechanical performance and general geological conditions.

The maiden program at Leogang is focussed around the historic, high grade, Nockelberg mine which was a source of cobalt ore for artisanal mining stretching back over 400 years. The full program will consist of 9 diamond holes from 3 drill pad locations, reducing the overall movement of the drill rigs and minimising the amount of time taken between holes.

These are planned to 'fan' down through the areas of historically high grade material and are supported by geochemical and geophysical data acquired by the Company through 2018.



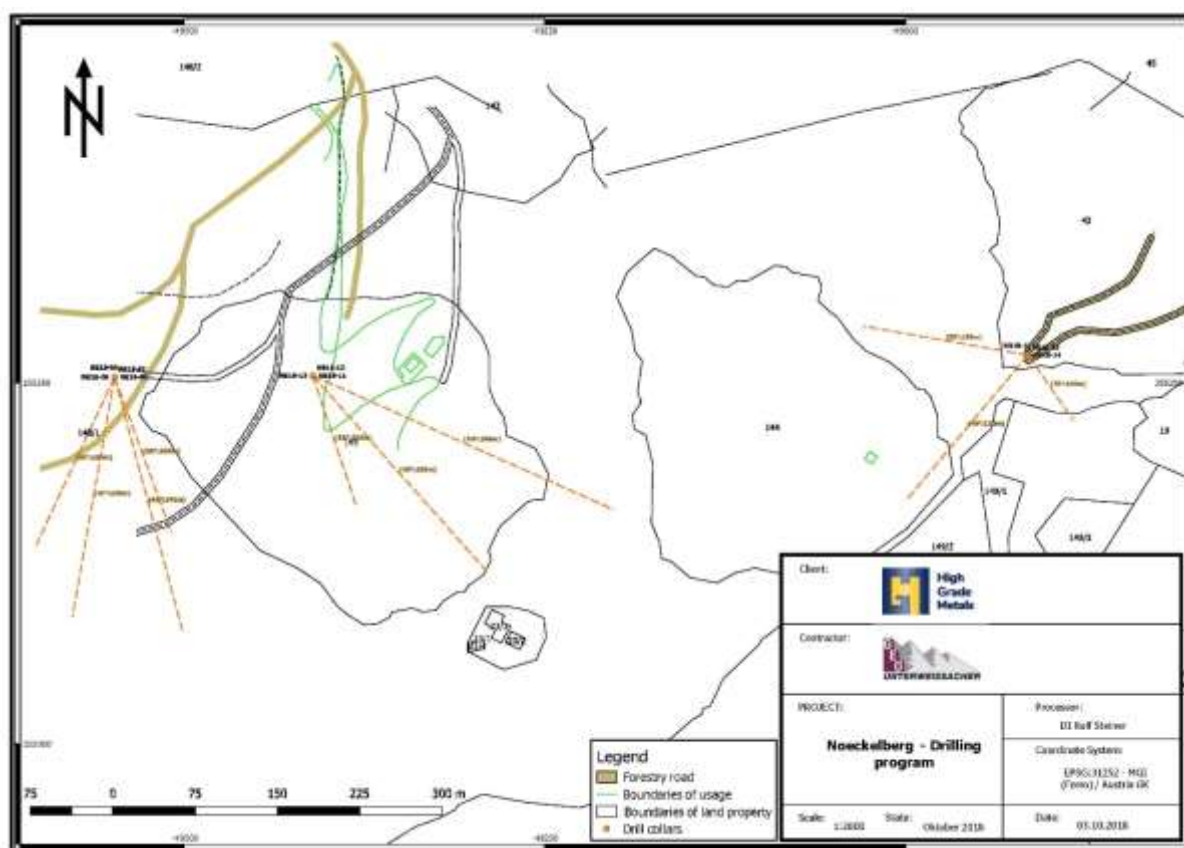


Figure 11 – Location map showing proposed collar locations and hole traces at Leogang

Hole-Id.	Meridian	Coordinates EPSG: 31252			Azimuth	Dip	Depth
		Y	X	Z [ü.A]			
NB18-06	M 31	- 49 548,15	255 254,16	1435,82	190,00	40,00	220,00
NB18-07	M 31	- 49 548,15	255 254,16	1435,82	205,00	50,00	200,00
NB18-08	M 31	- 49 548,15	255 254,16	1435,82	160,00	55,00	200,00
NB18-09	M 31	- 49 548,15	255 254,16	1435,82	165,00	41,00	240,00
NB18-11	M 31	- 49 400,33	255 276,65	1390,30	145,00	40,00	250,00
NB18-12	M 31	- 49 400,33	255 276,65	1390,30	170,00	55,00	200,00
NB18-13	M 31	- 49 400,33	255 276,65	1390,30	120,00	40,00	299,00
NB18-14	M 31	- 48 915,33	255 269,24	1241,52	220,00	40,00	170,00
NB18-15	M 31	- 48 915,33	255 269,24	1241,52	280,00	50,00	180,00
NB18-16	M 31	- 48 915,33	255 269,24	1241,52	145,00	70,00	160,00

Table 3 – Collar location data and drillhole orientation

### Expansion in Acreage

During the quarter the Company announced that it has increased the licenced area of its flagship Schellgaden Gold Project and Gratspitz Copper Cobalt Project. The Company has received notification that is the first rights holder of the additional areas covering around 65km<sup>2</sup>.

The Schellgaden Project area has been increased by 30km<sup>2</sup> to 100km<sup>2</sup>. The increase is designed to ensure all prospective areas in the northern extent of the Project area are secured given new geological information suggesting the mineralisation may extend into this area.

The Gratlspitz Project areas has been increased by 35km<sup>2</sup> to 53km<sup>2</sup>. The increase is designed to ensure all historic copper and cobalt mines in the region fall within the Company's project area and will be explored as part of the Company's medium term program.

The additional areas are complimentary to the existing portfolio and consistent with the Company's exploration model that seeks to leverage in country expertise and operational capacity.

For more information see ASX dated 24th July 2018.

### **Plans for the Current Quarter**

#### *Continue Drilling at Schellgaden Gold Project and Nöckelberg Cobalt, Copper, Nickel Project*

The Company will continue its drilling at both project locations and complete as much of the program as possible during the current calendar year.

#### *Ongoing exploration activities*

HGM will continue to progress its portfolio of projects through first principles surface exploration work which will include geological mapping, geochemical sampling and geophysics. Equally, preplanning for the 2019 program is quite advanced with the ability to continue drilling within the existing permitting, in addition to seeking permission for an expanded program in 2019.

### **Victory Bore**

On the 21<sup>st</sup> of August 2018 the Company announced the sale of Victory Bore to Surefire Resources NL. This is subject to a variety of approvals including ASIC, ASX and shareholder approvals. It remains uncertain as to the completion timetable for this sale, but the Company is in constant contact with Surefire on its progress.

### **Corporate**

At the end of the September quarter 2018, the Company holds A\$2.937million in cash and has no debt.

Subsequent to the end of the quarter, board changes were announced whereby Mr Simon Francis was appointed Non Executive Chairman and Mr Adrien Wing was appointed Non Executive Director and Company Secretary. Mr Steve Formica became a Non Executive Director and Mr David Palumbo retired from the board and resigned as Company Secretary effective November 2018.

**\*\*\* END \*\*\***

**For further information contact:**

**Torey Marshall**

CEO and Managing Director

info@highgrademetals.com.au

**Hayden Locke**

Non-Executive Director

info@highgrademetals.com.au

## Competent Persons Statement

The information in this report that relates to the Exploration Results is based on, and fairly represents, information and supporting documentation compiled under the supervision of Mr Torey Marshall, the Managing Director and CEO of HGM. Mr Marshall is a Competent Person who is a member of the Australian Institute of Mining & Metallurgy. Mr Marshall has sufficient experience which is relevant to the style of mineralisation and type of deposit under consideration and to the activity which he is undertaking to qualify as a competent person as defined in the 2012 edition of the JORC Code. Mr Marshall consents to the inclusion of the matters based in this ASX Release on his information noted in the form and context in which it appears.

## About High Grade Metals Ltd

High Grade Metals (ASX: HGM) is an Australian mineral exploration company with a portfolio of brown fields cobalt, copper and gold assets. The Company's major projects are all located in mining friendly Austria, which covers an area of about 84,000 km<sup>2</sup> across Central Europe. The highly experienced management aims to grow the value of HGM's project portfolio to benefit shareholders by leveraging innovation and maximizing value of the assets through systematic exploration and teamwork. The dynamic two-year exploration and development program underpins the Company's business strategy.



**Figure 1. Location of High Grade Metals' Projects within Austria**

## HIGH GRADE METALS PROJECT OVERVIEW

### Austrian Gold Projects

The Company has a 100% interest in five Austrian gold projects covering a total of 200km<sup>2</sup>.

#### 1. Schellgaden North Gold Project

The flagship project lies within an exploration area of 152 overlapping Freischürfe covering an area of 69km<sup>2</sup>. Located in the historic Schellgaden Mining District (refer Figure 2 below), named after the village of Schellgaden, the focus of the district gold production until the early years of the 20th Century. Gold mining at Schellgaden dates back to pre-Roman times. Known gold mines, such as Stüblbau, date back to the 12th-13th Century and the smaller Schulterbau Mine is likely to be considerably older. Chroniclers described the presence of some 150 gold mines during the heyday of mining in the 16th Century. Accordingly, Schellgaden has been considered one of the richest and most active gold mining districts in Austria. Although frequently interrupted, mining activity continued until the first half of the 20th Century. The Company has prepared an Exploration Target for this area with drilling to test the target expected to commence in Q3 CY18.

#### 2. Schellgaden South Gold Project

The flagship project lies within an exploration area of 67 overlapping Freischürfe covering an area of 31km<sup>2</sup>. The project covers the southern extension of the Schellgaden North Gold Project.

#### 3. Goldeck-Sifflitz Gold Project

The project lies within an exploration area of 57 overlapping Freischürfe covering an area of 27.6km<sup>2</sup>. The project covers the historic mine workings of Guginock. The area has been known from the Middle Ages for its deposits of gold and antimony. The large number of mine dumps and traces of collapsed mine entrances that occur across the exploration area, provide testimony to its long history of mining. To the north of the project area lies the ancient Sifflitz Gold Mining District, which was exploited during the 16<sup>th</sup> and 17<sup>th</sup> centuries from over 106 independent mine sites.

#### 4. Kreuzeck East Gold Project

The project lies within an exploration area of 42 overlapping Freischürfe covering an area of 20.5km<sup>2</sup>. The project covers two famous old mining districts; the high grade gold mines north of Lengholz and the stibnite deposits of Lessnig-Radlberg that sit within the Goldeck-Kreuzeck Mining District. Compared to the other projects, little is known about these mines and others within the project area as they have been abandoned for some time and are inaccessible.

#### 5. Kreuzeck West Gold Project

The project lies within an exploration area of 44 overlapping Freischürfe covering an area of 23.9km<sup>2</sup>. The projects also sits within the Goldeck-Kreuzek Mining District and includes for significant historical mines; Rabant, Gurskerkammer, Fundkofel, and Knappenstube-Strieden.



Figure 2: Location map showing the Company's Austrian Gold Projects

## Austrian Copper, Cobalt and Nickel Projects

The Company has a 100% interest in four Austrian gold projects covering a total of 85km<sup>2</sup>.

### 1. Leogang Cobalt, Copper, Nickel Project

The project lies within an exploration area of 63 overlapping Freischürfe covering an area of 27km<sup>2</sup>. The project covers one of the oldest and most famous mining localities in Austria, the Schwarzelo Valley, where mining was first documented in 1425. Nickel and cobalt were mined in the region from the mid-16th century when Leogang was famed for the diversity of its mineralogy and rich ore. At various times in its past, cobalt, nickel, copper and silver have been mined at Leogang. Mines include the Nöckelberg and Leogang mines. The Nöckelberg Prospect is the Company's immediate focus for which an Exploration Target has been prepared with drilling to commence in Q3 CY18.

### 2. Gratspitz Cobalt, Copper, Nickel Project

The flagship project lies within an exploration area of 132 overlapping Freischürfe covering an area of 53km<sup>2</sup>. The project lies within the Schwaz-Brixlegg Mining District, a renowned mining region, famous as the type locality of the mercurian fahlore variety 'schwarzite'. The region was a significant producer of copper and cobalt. Exploitation of copper deposits dates back to the Late Bronze Age (9<sup>th</sup> Century BC – Breitenlechner et al., 2013). The first recording of a copper and silver refinery at Brixlegg dates back to 1463. Between 1420 and 1827, it has been estimated that some 190,000 tonnes of copper and 2,600 tonnes of silver were mined in this area. Cobalt occurrences are located at "Silberberg" (2 km south-southeast of Brixlegg), "Geyer", which lies close to Zimmermoos, 2 km - 6 km southeast of Brixlegg, and on the flanks of Gratspitz Mountain.



### 3. Seekar Cobalt, Copper and Nickel Project

The project lies within an exploration area of 9 overlapping Freischürfe covering an area of approximately 4km<sup>2</sup>. The project covers historic mine sites first established during the 16<sup>th</sup> century and mined intermittently through to 1923. Mineralisation is associated with hydrothermal vein sulphides and is typically polymetallic, copper, silver, nickel and cobalt. Vein thicknesses of up to 2m have been historically mined.

### 4. Zinkwand Cobalt, Copper and Nickel Project

The project lies within an exploration area of 2 overlapping Freischürfe covering an area of approximately 1km<sup>2</sup>. The project covers the site of historic sulphide mining including both cobalt and nickel. Several historical mining adits are still accessible within the project area.



Figure 3 – Location map showing the Company's Cobalt, Copper and Nickel Projects in Austria

## Appendix 1: Tenement Schedule

The Company held a 100% interest in the following granted mining tenements in Austria as at 30 June 2018.

The changes to the mining tenements held during the reporting period, comprised the addition of new licences at Gratspitz & Schellgaden, and the divestment of Victory Bore.

Project	Country	Tenement	% Held	Change During Quarter
Victory Bore	Australia (WA)	EL57/1036	0%	Divested 100%

New Gratlspitz Licence information (100% HGM), is shown in the table below.

ID	Meridan-	Co-ordinates in Metres	
		Y	X
01/Gr/18	M 28	+ 113573.60	+ 5253132.86
02/Gr/18	M 28	+ 114309.99	+ 5253132.32
03/Gr/18	M 28	+ 115046.38	+ 5253131.88
04/Gr/18	M 28	+ 115782.71	+ 5253131.31
05/Gr/18	M 28	+ 116519.12	+ 5253130.83
06/Gr/18	M 28	+ 117255.53	+ 5253130.33
07/Gr/18	M 28	+ 117983.32	+ 5253137.37
08/Gr/18	M 28	+ 118719.66	+ 5253137.39
09/Gr/18	M 28	+ 119455.99	+ 5253137.49
10/Gr/18	M 28	+ 120192.34	+ 5253137.58
11/Gr/18	M 28	+ 120928.62	+ 5253137.66
12/Gr/18	M 28	+ 121664.97	+ 5253137.82
13/Gr/18	M 28	+ 122401.25	+ 5253137.85
14/Gr/18	M 28	+ 123137.62	+ 5253137.98
15/Gr/18	M 28	+ 113951.48	+ 5252526.64
16/Gr/18	M 28	+ 114687.95	+ 5252526.15
17/Gr/18	M 28	+ 115424.43	+ 5252525.76
18/Gr/18	M 28	+ 116160.83	+ 5252525.23
19/Gr/18	M 28	+ 116897.31	+ 5252524.79
20/Gr/18	M 28	+ 117633.80	+ 5252524.35
21/Gr/18	M 28	+ 118361.66	+ 5252531.43
22/Gr/18	M 28	+ 119098.08	+ 5252531.49
23/Gr/18	M 28	+ 119834.50	+ 5252531.65
24/Gr/18	M 28	+ 120570.92	+ 5252531.79
25/Gr/18	M 28	+ 121307.27	+ 5252531.90
26/Gr/18	M 28	+ 122043.70	+ 5252532.11
27/Gr/18	M 28	+ 122780.07	+ 5252532.19
28/Gr/18	M 28	+ 114324.02	+ 5251921.07
29/Gr/18	M 28	+ 115060.42	+ 5251920.73
30/Gr/18	M 28	+ 115796.82	+ 5251920.27
31/Gr/18	M 28	+ 116533.15	+ 5251919.89
32/Gr/18	M 28	+ 111181.99	+ 5251261.24
33/Gr/18	M 28	+ 111918.38	+ 5251260.29
34/Gr/18	M 28	+ 112654.70	+ 5251259.31
35/Gr/18	M 28	+ 110808.34	+ 5250633.62
36/Gr/18	M 28	+ 111544.82	+ 5250632.41
37/Gr/18	M 28	+ 112281.37	+ 5250631.16
38/Gr/18	M 28	+ 113017.86	+ 5250630.01
39/Gr/18	M 28	+ 111175.53	+ 5249996.05
40/Gr/18	M 28	+ 111912.01	+ 5249994.87
41/Gr/18	M 28	+ 112648.50	+ 5249993.68

42/Gr/18	M 28	+ 113332.15	+ 5250014.96
43/Gr/18	M 28	+ 110806.17	+ 5249359.73
44/Gr/18	M 28	+ 111542.65	+ 5249358.50
45/Gr/18	M 28	+ 112279.21	+ 5249357.25
46/Gr/18	M 28	+ 113015.70	+ 5249355.98
47/Gr/18	M 28	+ 110421.34	+ 5248765.34
48/Gr/18	M 28	+ 111163.60	+ 5248778.71
49/Gr/18	M 28	+ 111900.38	+ 5248777.98
50/Gr/18	M 28	+ 112637.15	+ 5248777.11
51/Gr/18	M 28	+ 113373.86	+ 5248776.33
52/Gr/18	M 28	+ 108576.82	+ 5248181.14
53/Gr/18	M 28	+ 109313.65	+ 5248180.07
54/Gr/18	M 28	+ 110050.50	+ 5248178.87
55/Gr/18	M 28	+ 110787.27	+ 5248177.78
56/Gr/18	M 28	+ 108193.16	+ 5247608.70
57/Gr/18	M 28	+ 108930.06	+ 5247607.59
58/Gr/18	M 28	+ 109666.97	+ 5247606.35
59/Gr/18	M 28	+ 110403.81	+ 5247605.21
60/Gr/18	M 28	+ 106322.51	+ 5247014.39
61/Gr/18	M 28	+ 107069.72	+ 5247028.04
62/Gr/18	M 28	+ 107806.70	+ 5247026.78
63/Gr/18	M 28	+ 108543.68	+ 5247025.39
64/Gr/18	M 28	+ 109280.59	+ 5247024.10
65/Gr/18	M 28	+ 105922.77	+ 5246457.20
66/Gr/18	M 28	+ 106670.05	+ 5246470.79
67/Gr/18	M 28	+ 107407.09	+ 5246469.48
68/Gr/18	M 28	+ 108144.14	+ 5246468.05
69/Gr/18	M 28	+ 108881.12	+ 5246466.71
70/Gr/18	M 28	+ 106321.13	+ 5245858.47
71/Gr/18	M 28	+ 107068.49	+ 5245872.09
72/Gr/18	M 28	+ 107805.61	+ 5245870.83
73/Gr/18	M 28	+ 108542.74	+ 5245869.45
74/Gr/18	M 28	+ 109279.79	+ 5245868.16
75/Gr/18	M 28	+ 104189.36	+ 5245123.29
76/Gr/18	M 28	+ 104926.56	+ 5245121.45
77/Gr/18	M 28	+ 103789.27	+ 5244566.25
78/Gr/18	M 28	+ 104526.54	+ 5244564.35
79/Gr/18	M 28	+ 105263.74	+ 5244562.56
80/Gr/18	M 28	+ 104187.54	+ 5243967.36
81/Gr/18	M 28	+ 104924.89	+ 5243965.52

New Schellgaden Licence information (100% HGM), shown in the table below.

Freischurf-Nr	Meridian	Co-ordinates in Meters	
		Y	X
01/18/SN	M 31	+ 16,147.19	+ 5,218,121.77



02/18/SN	M 31	+ 14,905.11	+ 5,218,110.89
03/18/SN	M 31	+ 13,658.51	+ 5,218,103.51
04/18/SN	M 31	+ 15,532.81	+ 5,217,744.01
05/18/SN	M 31	+ 14,289.70	+ 5,217,743.42
06/18/SN	M 31	+ 16,784.54	+ 5,217,741.82
07/18/SN	M 31	+ 13,673.46	+ 5,217,382.48
08/18/SN	M 31	+ 16,164.40	+ 5,217,382.48
09/18/SN	M 31	+ 14,904.76	+ 5,217,380.11
10/18/SN	M 31	+ 15,532.81	+ 5,217,007.92
11/18/SN	M 31	+ 14,289.70	+ 5,217,007.33
12/18/SN	M 31	+ 13,673.46	+ 5,216,646.39
13/18/SN	M 31	+ 16,164.41	+ 5,216,646.39
14/18/SN	M 31	+ 14,904.76	+ 5,216,644.03
15/18/SN	M 31	+ 15,532.81	+ 5,216,271.84
16/18/SN	M 31	+ 14,289.70	+ 5,216,271.25
17/18/SN	M 31	+ 13,673.37	+ 5,215,910.39
18/18/SN	M 31	+ 16,164.31	+ 5,215,910.39
19/18/SN	M 31	+ 14,904.67	+ 5,215,908.03
20/18/SN	M 31	+ 15,532.72	+ 5,215,535.83
21/18/SN	M 31	+ 14,289.61	+ 5,215,535.24
22/18/SN	M 31	+ 13,673.49	+ 5,215,174.56
23/18/SN	M 31	+ 14,904.79	+ 5,215,172.20
24/18/SN	M 31	+ 15,532.85	+ 5,214,800.04
25/18/SN	M 31	+ 14,289.73	+ 5,214,799.45
26/18/SN	M 31	+ 13,673.49	+ 5,214,438.48
27/18/SN	M 31	+ 14,904.79	+ 5,214,436.12
28/18/SN	M 31	+ 14,289.64	+ 5,214,063.44
29/18/SN	M 31	+ 13,673.40	+ 5,213,702.47
30/18/SN	M 31	+ 14,904.70	+ 5,213,700.11
31/18/SN	M 31	+ 14,381.52	+ 5,213,424.57
32/18/SN	M 31	+ 13,765.27	+ 5,213,063.62
33/18/SN	M 31	+ 14,996.57	+ 5,213,061.26
34/18/SN	M 31	+ 14,381.51	+ 5,212,688.48
35/18/SN	M 31	+ 13,163.21	+ 5,212,671.94
36/18/SN	M 31	+ 13,765.28	+ 5,212,327.54
37/18/SN	M 31	+ 14,996.58	+ 5,212,325.18
38/18/SN	M 31	+ 14,381.52	+ 5,211,952.39
39/18/SN	M 31	+ 13,163.21	+ 5,211,935.86
40/18/SN	M 31	+ 14,808.40	+ 5,211,923.10
41/18/SN	M 31	+ 13,765.19	+ 5,211,591.53
42/18/SN	M 31	+ 14,381.43	+ 5,211,216.39
43/18/SN	M 31	+ 13,163.12	+ 5,211,199.85
44/18/SN	M 31	+ 13,765.31	+ 5,210,855.71
45/18/SN	M 31	+ 14,381.55	+ 5,210,480.60
46/18/SN	M 31	+ 13,163.25	+ 5,210,464.06
47/18/SN	M 31	+ 13,765.31	+ 5,210,119.62

48/18/SN	M 31	+ 12,606.06	+ 5,210,058.21
49/18/SN	M 31	+ 14,343.67	+ 5,209,751.68
50/18/SN	M 31	+ 13,163.15	+ 5,209,728.06
51/18/SN	M 31	+ 12,388.34	+ 5,209,426.45
52/18/SN	M 31	+ 13,765.22	+ 5,209,383.62
53/18/SN	M 31	+ 12,902.00	+ 5,209,345.50
54/18/SN	M 31	+ 14,344.70	+ 5,209,300.84

Claim Nr.	Ref. meridian	Coordinates in Meter	
		y	x
GRATLSPITZ			
01/17/T	28	+ 117600.00	5256300.00
02/17/T	28	+ 118336.00	5256300.00
03/17/T	28	+ 119072.00	5256300.00
04/17/T	28	+ 119808.00	5256300.00
05/17/T	28	+ 120544.00	5256300.00
06/17/T	28	+ 121280.00	5256300.00
07/17/T	28	+ 122016.00	5256300.00
08/17/T	28	+ 117232.00	5255663.00
09/17/T	28	+ 117968.00	5255663.00
10/17/T	28	+ 118704.00	5255663.00
11/17/T	28	+ 119440.00	5255663.00
12/17/T	28	+ 120176.00	5255663.00
13/17/T	28	+ 120912.00	5255663.00
14/17/T	28	+ 121648.00	5255663.00
15/17/T	28	+ 122384.00	5255663.00
16/17/T	28	+ 117600.00	5255026.00
17/17/T	28	+ 118336.00	5255026.00
18/17/T	28	+ 119072.00	5255026.00
19/17/T	28	+ 119808.00	5255026.00
20/17/T	28	+ 120544.00	5255026.00
21/17/T	28	+ 121280.00	5255026.00
22/17/T	28	+ 122016.00	5255026.00
23/17/T	28	+ 122752.00	5255026.00
24/17/T	28	+ 117968.00	5254389.00
25/17/T	28	+ 118704.00	5254389.00
26/17/T	28	+ 119440.00	5254389.00
27/17/T	28	+ 120176.00	5254389.00
28/17/T	28	+ 120912.00	5254389.00
29/17/T	28	+ 121648.00	5254389.00
30/17/T	28	+ 122384.00	5254389.00





Claim Nr.	Ref. meridian	Coordinates in Meter		
			y	x
31/17/T	28	+	118336.00	5253752.00
32/17/T	28	+	119072.00	5253752.00
33/17/T	28	+	119808.00	5253752.00
34/17/T	28	+	120544.00	5253752.00
35/17/T	28	+	121280.00	5253752.00
36/17/T	28	+	122016.00	5253752.00
37/17/T	28	+	122752.00	5253752.00
<b>SCHWARZLEO</b>				
38/17/S	31	-	51381.00	5252616.00
39/17/S	31	-	50646.00	5252588.00
40/17/S	31	-	49911.00	5252560.00
41/17/S	31	-	49176.00	5252531.00
42/17/S	31	-	48440.00	5252503.00
43/17/S	31	-	51724.00	5253267.00
44/17/S	31	-	50989.00	5253239.00
45/17/S	31	-	50254.00	5253210.00
46/17/S	31	-	49519.00	5253182.00
47/17/S	31	-	48784.00	5253154.00
48/17/S	31	-	48048.00	5253125.00
49/17/S	31	-	52067.00	5253918.00
50/17/S	31	-	51332.00	5253889.00
51/17/S	31	-	50597.00	5253861.00
52/17/S	31	-	49862.00	5253832.00
53/17/S	31	-	49127.00	5253804.00
54/17/S	31	-	48391.00	5253776.00
55/17/S	31	-	47656.00	5253747.00
56/17/S	31	-	51675.00	5254540.00
57/17/S	31	-	50940.00	5254511.00
58/17/S	31	-	50205.00	5254483.00
59/17/S	31	-	49470.00	5254455.00
60/17/S	31	-	48734.00	5254426.00
61/17/S	31	-	47999.00	5254398.00
62/17/S	31	-	52018.00	5255190.00
63/17/S	31	-	51283.00	5255162.00
64/17/S	31	-	50548.00	5255133.00
65/17/S	31	-	49813.00	5255105.00
66/17/S	31	-	49077.00	5255077.00
67/17/S	31	-	48342.00	5255048.00
<b>SEEKAR</b>				
68/17/S	31	+	15650.00	5237250.00
69/17/S	31	+	16386.00	5237250.00



Claim Nr.	Ref. meridian	Coordinates in Meter	
		y	x
70/17/S	31	+ 17122.00	5237250.00
71/17/S	31	+ 16018.00	5236613.00
72/17/S	31	+ 16754.00	5236613.00
73/17/S	31	+ 17490.00	5236613.00
74/17/S	31	+ 16386.00	5235976.00
75/17/S	31	+ 17122.00	5235976.00
76/17/S	31	+ 17858.00	5235976.00
<b>ZINKWAND</b>			
77/17/S	31	+ 25900.00	5237300.00
78/17/S	31	+ 26350.00	5236750.00
<b>LEOGANG EAST</b>			
LE/01	M 31	-40 147,00	5 256 088,00
LE/02	M 31	-40 901,00	5 256 084,00
LE/03	M 31	-40 499,00	5 255 507,00
LE/04	M 31	-39 749,00	5 255 507,00
LE/05	M 31	-41 255,00	5 255 506,00
LE/06	M 31	-41 611,00	5 254 910,00
LE/07	M 31	-40 861,00	5 254 910,00
LE/08	M 31	-40 111,00	5 254 910,00
LE/09	M 31	-39 361,00	5 254 910,00
LE/10	M 31	-41 240,00	5 254 305,00
LE/11	M 31	-40 490,00	5 254 305,00
LE/12	M 31	-39 740,00	5 254 305,00
LE/13	M 31	-38 990,00	5 254 305,00
LE/14	M 31	-40 106,00	5 253 709,00
LE/15	M 31	-39 356,00	5 253 709,00
LE/16	M 31	-40 869,00	5 253 694,00
LE/17	M 31	-41 602,00	5 253 689,00
LE/18	M 31	-40 470,00	5 253 111,00
LE/19	M 31	-39 720,00	5 253 111,00
LE/20	M 31	-39 871,00	5 252 562,00
LE/21	M 31	-42 445,00	5 252 496,00
LE/22	M 31	-40 506,00	5 252 444,00
LE/23	M 31	-40 809,00	5 252 035,00
LE/24	M 31	-42 145,00	5 252 021,00
LE/25	M 31	-41 504,00	5 251 986,00
LE/26	M 31	-42 830,00	5 251 907,00
LE/27	M 31	-40 403,00	5 251 470,00
LE/28	M 31	-41 124,00	5 251 368,00
LE/29	M 31	-41 786,00	5 251 359,00
LE/30	M 31	-42 448,00	5 251 313,00



Claim Nr.	Ref. meridian	Coordinates in Meter	
		y	x
LE/31	M 31	-40 615,00	5 250 811,00
LE/32	M 31	-42 055,29	5 250 771,34
LE/33	M 31	-41 358,00	5 250 743,00

Claim Nr.	Ref.	Coordinates in Meter	
SCHELLGADEN North / Salzburg			
02/05/S	M 31	+ 17.427,90	+ 5,217.389,24
03/05/S	M 31	+ 18.702,90	+ 5,217.389,24
04/05/S	M 31	+ 16.790,40	+ 5,217.021,18
05/05/S	M 31	+ 18.065,40	+ 5,217.021,18
06/05/S	M 31	+ 19.340,40	+ 5,217.021,18
07/05/S	M 31	+ 17.427,90	+ 5,216.653,12
08/05/S	M 31	+ 18.702,90	+ 5,216.653,12
09/05/S	M 31	+ 16.790,40	+ 5,216.285,06
10/05/S	M 31	+ 18.065,40	+ 5,216.285,06
11/05/S	M 31	+ 19.340,40	+ 5,216.285,06
12/05/S	M 31	+ 17.427,90	+ 5,215.917,00
13/05/S	M 31	+ 18.702,90	+ 5,215.917,00
14/05/S	M 31	+ 16.790,40	+ 5,215.548,94
15/05/S	M 31	+ 18.065,40	+ 5,215.548,94
16/05/S	M 31	+ 19.340,40	+ 5,215.548,94
17/05/S	M 31	+ 16.152,90	+ 5,215.180,88
18/05/S	M 31	+ 17.427,90	+ 5,215.180,88
19/05/S	M 31	+ 18.702,90	+ 5,215.180,88
20/05/S	M 31	+ 16.790,40	+ 5,214.812,82
21/05/S	M 31	+ 18.065,40	+ 5,214.812,82
22/05/S	M 31	+ 19.340,40	+ 5,214.812,82
23/05/S	M 31	+ 16.152,90	+ 5,214.444,76
24/05/S	M 31	+ 17.427,90	+ 5,214.444,76
25/05/S	M 31	+ 18.702,90	+ 5,214.444,76
26/05/S	M 31	+ 15.515,40	+ 5,214.076,70
27/05/S	M 31	+ 16.790,40	+ 5,214.076,70
28/05/S	M 31	+ 18.065,40	+ 5,214.076,70
29/05/S	M 31	+ 19.340,40	+ 5,214.076,70
30/05/S	M 31	+ 16.152,90	+ 5,213.708,84
31/05/S	M 31	+ 17.427,90	+ 5,213.708,64
32/05/S	M 31	+ 18.702,90	+ 5,213.708,64
33/05/S	M 31	+ 16.790,40	+ 5,213.340,60
34/05/S	M 31	+ 18.065,40	+ 5,213.340,58
35/05/S	M 31	+ 19.340,40	+ 5,213.340,58



Claim Nr.	Ref.	Coordinates in Meter	
36/05/S	M 31	+ 17.427,90	+ 5,212.972,52
37/05/S	M 31	+ 18.702,90	+ 5,212.972,52
<b>SCHELLGADEN South /Carinthia</b>			
15/05/K	M 31	+ 15.515,40	+ 5,213.340,58
16/05/K	M 31	+ 16.152,90	+ 5,212.972,52
17/05/K	M 31	+ 15.515,40	+ 5,212.604,46
18/05/K	M 31	+ 16.790,40	+ 5,212.604,46
19/05/K	M 31	+ 18.065,40	+ 5,212.604,46
20/05/K	M 31	+ 19.340,40	+ 5,212.604,46
21/05/K	M 31	+ 16.152,90	+ 5,212.236,40
22/05/K	M 31	+ 17.427,90	+ 5,212.236,40
23/05/K	M 31	+ 18.702,90	+ 5,212.236,40
24/05/K	M 31	+ 19.977,90	+ 5,212.236,40
25/05/K	M 31	+ 15.515,40	+ 5,211.868,34
26/05/K	M 31	+ 16.790,40	+ 5,211.868,34
27/05/K	M 31	+ 18.065,40	+ 5,211.868,34
28/05/K	M 31	+ 19.340,40	+ 5,211.868,34
29/05/K	M 31	+ 14.877,90	+ 5,211.500,28
30/05/K	M 31	+ 16.152,90	+ 5,211.500,28
31/05/K	M 31	+ 17.427,90	+ 5,211.500,28
32/05/K	M 31	+ 18.702,90	+ 5,211.500,28
33/05/K	M 31	+ 19.977,90	+ 5,211.500,28
34/05/K	M 31	+ 15.515,40	+ 5,211.132,22
35/05/K	M 31	+ 16.790,40	+ 5,211.132,22
36/05/K	M 31	+ 18.065,40	+ 5,211.132,22
37/05/K	M 31	+ 19.340,40	+ 5,211.132,22
38/05/K	M 31	+ 14.877,90	+ 5,210.764,16
39/05/K	M 31	+ 16.152,90	+ 5,210.764,16
40/05/K	M 31	+ 17.427,90	+ 5,210.764,16
41/05/K	M 31	+ 18.702,90	+ 5,210.764,16
42/05/K	M 31	+ 19.977,90	+ 5,210.764,16
43/05/K	M 31	+ 15.515,40	+ 5,210.396,10
44/05/K	M 31	+ 16.790,40	+ 5,210.396,10
45/05/K	M 31	+ 18.065,40	+ 5,210.396,10
46/05/K	M 31	+ 19.340,40	+ 5,210.396,10
47/05/K	M 31	+ 14.877,90	+ 5,210.028,04
48/05/K	M 31	+ 16.152,90	+ 5,210.028,04
49/05/K	M 31	+ 17.427,90	+ 5,210.028,04
50/05/K	M 31	+ 18.702,90	+ 5,210.028,04
51/05/K	M 31	+ 19.977,90	+ 5,210.028,04
52/05/K	M 31	+ 15.515,40	+ 5,209.659,98
53/05/K	M 31	+ 16.790,40	+ 5,209.659,98
54/05/K	M 31	+ 18.065,40	+ 5,209.659,98



Claim Nr.	Ref.	Coordinates in Meter	
55/05/K	M 31	+ 19.340,40	+ 5,209.659,98
56/05/K	M 31	+ 14.877,90	+ 5,209.291,92
57/05/K	M 31	+ 16.152,90	+ 5,209.291,92
58/05/K	M 31	+ 17.427,90	+ 5,209.291,92
59/05/K	M 31	+ 15.515,40	+ 5,208.923,86
60/05/K	M 31	+ 16.790,40	+ 5,208.923,86
61/05/K	M 31	+ 12.600,00	+ 5,209.000,00
62/05/K	M 31	+ 13.300,00	+ 5,209.000,00
63/05/K	M 31	+ 14.000,00	+ 5,209.000,00
64/05/K	M 31	+ 14.700,00	+ 5,209.000,00
65/05/K	M 31	+ 12.950,00	+ 5,208.400,00
66/05/K	M 31	+ 13.650,00	+ 5,208.400,00
67/05/K	M 31	+ 14.350,00	+ 5,208.400,00
68/05/K	M 31	+ 12.600,00	+ 5,207.800,00
69/05/K	M 31	+ 13.300,00	+ 5,207.800,00
70/05/K	M 31	+ 14.000,00	+ 5,207.800,00
71/05/K	M 31	+ 12.950,00	+ 5,207.200,00
72/05/K	M 31	+ 13.650,00	+ 5,207.200,00
73/05/K	M 31	+ 14.350,00	+ 5,207.200,00
74/05/K	M 31	+ 12.600,00	+ 5,206.600,00
75/05/K	M 31	+ 13.300,00	+ 5,206.600,00
76/05/K	M 31	+ 14.000,00	+ 5,206.600,00
77/05/K	M 31	+ 12.950,00	+ 5,206.000,00
78/05/K	M 31	+ 13.650,00	+ 5,206.000,00
79/05/K	M 31	+ 12.600,00	+ 5,205.400,00
80/05/K	M 31	+ 13.300,00	+ 5,205.400,00
81/05/K	M 31	+ 12.950,00	+ 5,204.800,00
82/05/K	M 31	+ 13.650,00	+ 5,204.800,00
83/05/K	M 31	+ 12.600,00	+ 5,204.200,00
84/05/K	M 31	+ 13.300,00	+ 5,204.200,00
85/05/K	M 31	+ 12.250,00	+ 5,203.600,00
86/05/K	M 31	+ 12.950,00	+ 5,203.600,00
87/05/K	M 31	+ 12.600,00	+ 5,203.000,00
88/05/K	M 31	+ 13.300,00	+ 5,203.000,00
89/05/K	M 31	+ 12.250,00	+ 5,202.400,00
90/05/K	M 31	+ 12.950,00	+ 5,202.400,00
91/05/K	M 31	+ 12.600,00	+ 5,201.800,00
93/05/K	M 31	+ 12.950,00	+ 5,201.200,00
94/05/K	M 31	+ 11.900,00	+ 5,200.600,00
95/05/K	M 31	+ 12.600,00	+ 5,200.600,00
96/05/K	M 31	+ 9.450,00	+ 5,200.000,00
97/05/K	M 31	+ 10.150,00	+ 5,200.000,00
98/05/K	M 31	+ 10.850,00	+ 5,200.000,00





Claim Nr.	Ref.	Coordinates in Meter	
99/05/K	M 31	+ 11.550,00	+ 5,200.000,00
100/05/K	M 31	+ 12.250,00	+ 5,200.000,00
101/05/K	M 31	+ 12.950,00	+ 5,200.000,00
102/05/K	M 31	+ 9.800,00	+ 5,199.400,00
103/05/K	M 31	+ 10.500,00	+ 5,199.400,00
104/05/K	M 31	+ 9.450,00	+ 5,198.800,00
105/05/K	M 31	+ 10.150,00	+ 5,198.800,00
106/05/K	M 31	+ 9.800,00	+ 5,198.200,00
107/05/K	M 31	+ 10.500,00	+ 5,198.200,00
108/05/K	M 31	+ 10.150,00	+ 5,197.600,00
109/05/K	M 31	+ 10.850,00	+ 5,197.600,00
110/05/K	M 31	+ 10.500,00	+ 5,197.000,00
111/05/K	M 31	+ 11.200,00	+ 5,197.000,00
112/05/K	M 31	+ 11.900,00	+ 5,197.000,00
113/05/K	M 31	+ 12.600,00	+ 5,197.000,00
114/05/K	M 31	+ 10.150,00	+ 5,196.400,00
115/05/K	M 31	+ 10.850,00	+ 5,196.400,00
116/05/K	M 31	+ 11.550,00	+ 5,196.400,00
117/05/K	M 31	+ 12.250,00	+ 5,196.400,00
118/05/K	M 31	+ 9.800,00	+ 5,195.800,00
119/05/K	M 31	+ 10.500,00	+ 5,195.800,00
120/05/K	M 31	+ 11.200,00	+ 5,195.800,00
121/05/K	M 31	+ 11.900,00	+ 5,195.800,00
122/05/K	M 31	+ 8.050,00	+ 5,195.200,00
123/05/K	M 31	+ 8.750,	+ 5,195.200,00
124/05/K	M 31	+ 9.450,00	+ 5,195.200,00
125/05/K	M 31	+ 10.150,00	+ 5,195.200,00
126/05/K	M 31	+ 10.850,00	+ 5,195.200,00
127/05/K	M 31	+ 11.550,00	+ 5,195.200,00
128/05/K	M 31	+ 7.700,00	+ 5,194.600,00
129/05/K	M 31	+ 8.400,00	+ 5,194.600,00
130/05/K	M 31	+ 9.100,00	+ 5,194.600,00
131/05/K	M 31	+ 9.800,00	+ 5,194.600,00
132/05/K	M 31	+ 7.350,00	+ 5,194.000,00
133/05/K	M 31	+ 8.050,00	+ 5,194.000,00
134/05/K	M 31	+ 8.750,00	+ 5,194.000,00
135/05/K	M 31	+ 9.450,00	+ 5,194.000,00
<b>KREUZECK West / Carinthia</b>			
136/05/K	M 31	- 27.900,00	+ 5,183.000,00
137/05/K	M 31	- 27.200,00	+ 5,183.000,00
138/05/K	M 31	- 26.500,00	+ 5,183.000,00
139/05/K	M 31	- 25.800,00	+ 5,183.000,00
140/05/K	M 31	- 25.100,00	+ 5,183.000,00



Claim Nr.	Ref.	Coordinates in Meter	
141/05/K	M 31	- 24.400,00	+ 5,183.000,00
142/05/K	M 31	- 23.700,00	+ 5,183.000,00
143/05/K	M 31	- 23.000,00	+ 5,183.000,00
144/05/K	M 31	- 22.300,00	+ 5,183.000,00
145/05/K	M 31	- 28.980,00	+ 5,182.400,00
146/05/K	M 31	- 28.250,00	+ 5,182.400,00
147/05/K	M 31	- 27.550,00	+ 5,182.400,00
148/05/K	M 31	- 26.850,00	+ 5,182.400,00
149/05/K	M 31	- 26.150,00	+ 5,182.400,00
150/05/K	M 31	- 25.450,00	+ 5,182.400,00
151/05/K	M 31	- 24.750,00	+ 5,182.400,00
152/05/K	M 31	- 24.050,00	+ 5,182.400,00
153/05/K	M 31	- 23.350,00	+ 5,182.400,00
154/05/K	M 31	- 22.650,00	+ 5,182.400,00
155/05/K	M 31	- 29.300,00	+ 5,181.800,00
156/05/K	M 31	- 28.600,00	+ 5,181.800,00
157/05/K	M 31	- 27.900,00	+ 5,181.800,00
158/05/K	M 31	- 27.200,00	+ 5,181.800,00
159/05/K	M 31	- 26.500,00	+ 5,181.800,00
160/05/K	M 31	- 25.800,00	+ 5,181.800,00
161/05/K	M 31	- 25.100,00	+ 5,181.800,00
162/05/K	M 31	- 24.400,00	+ 5,181.800,00
163/05/K	M 31	- 23.700,00	+ 5,181.800,00
164/05/K	M 31	- 23.000,00	+ 5,181.800,00
165/05/K	M 31	- 22.300,00	+ 5,181.800,00
166/05/K	M 31	- 29.650,00	+ 5,181.200,00
167/05/K	M 31	- 28.950,00	+ 5,181.200,00
168/05/K	M 31	- 28.250,00	+ 5,181.200,00
169/05/K	M 31	- 27.550,00	+ 5,181.200,00
170/05/K	M 31	- 26.850,00	+ 5,181.200,00
171/05/K	M 31	- 26.150,00	+ 5,181.200,00
172/05/K	M 31	- 25.450,00	+ 5,181.200,00
173/05/K	M 31	- 24.750,00	+ 5,181.200,00
174/05/K	M 31	- 24.050,00	+ 5,181.200,00
175/05/K	M 31	- 23.350,00	+ 5,181.200,00
176/05/K	M 31	- 22.650,00	+ 5,181.200,00
177/05/K	M 31	- 29.300,00	+ 5,180.600,00
178/05/K	M 31	- 28.600,00	+ 5,180.600,00
179/05/K	M 31	- 27.900,00	+ 5,180.600,00
<b>KREUZECK East / Carinthia</b>			
180/05/K	M 31	- 1.750,00	+ 5,183.600,00
181/05/K	M 31	- 1.050,00	+ 5,183.600,00
182/05/K	M 31	- 350,00	+ 5,183.600,00



Claim Nr.	Ref.	Coordinates in Meter	
183/05/K	M 31	+ 350,00	+ 5,183.600,00
184/05/K	M 31	- 2.100,00	+ 5,183.000,00
185/05/K	M 31	- 1.400,00	+ 5,183.000,00
186/05/K	M 31	- 700,00	+ 5,183.000,00
187/05/K	M 31	+/- 0,00	+ 5,183.000,00
188/05/K	M 31	+ 700,00	+ 5,183.000,00
189/05/K	M 31	- 2.450,00	+ 5,182.400,00
190/05/K	M 31	- 1.750,00	+ 5,182.400,00
191/05/K	M 31	- 1.050,00	+ 5,182.400,00
192/05/K	M 31	- 350,00	+ 5,182.400,00
193/05/K	M 31	+ 350,00	+ 5,182.400,00
194/05/K	M 31	- 6.300,00	+ 5,181.800,00
195/05/K	M 31	- 5.600,00	+ 5,181.800,00
196/05/K	M 31	- 4.900,00	+ 5,181.800,00
197/05/K	M 31	- 4.200,00	+ 5,181.800,00
198/05/K	M 31	- 3.500,00	+ 5,181.800,00
199/05/K	M 31	- 2.800,00	+ 5,181.800,00
200/05/K	M 31	- 2.100,00	+ 5,181.800,00
201/05/K	M 31	- 1.400,00	+ 5,181.800,00
202/05/K	M 31	- 700,00	+ 5,181.800,00
203/05/K	M 31	+/- 0,00	+ 5,181.800,00
204/05/K	M 31	- 5.950,00	+ 5,181.200,00
205/05/K	M 31	- 5.250,00	+ 5,181.200,00
206/05/K	M 31	- 4.550,00	+ 5,181.200,00
207/05/K	M 31	- 3.850,00	+ 5,181.200,00
208/05/K	M 31	- 3.150,00	+ 5,181.200,00
209/05/K	M 31	- 2.450,00	+ 5,181.200,00
210/05/K	M 31	- 1.750,00	+ 5,181.200,00
211/05/K	M 31	- 1.050,00	+ 5,181.200,00
212/05/K	M 31	- 350,00	+ 5,181.200,00
213/05/K	M 31	- 6.300,00	+ 5,180.600,00
214/05/K	M 31	- 5.600,00	+ 5,180.600,00
215/05/K	M 31	- 4.900,00	+ 5,180.600,00
216/05/K	M 31	- 4.200,00	+ 5,180.600,00
217/05/K	M 31	- 3.500,00	+ 5,180.600,00
218/05/K	M 31	- 2.800,00	+ 5,180.600,00
219/05/K	M 31	- 2.100,00	+ 5,180.600,00
220/05/K	M 31	- 1.400,00	+ 5,180.600,00
221/05/K	M 31	- 700,00	+ 5,180.600,00
<b>GOLDECK – SIFLITZ / Carinthia</b>			
222/05/K	M 31	+ 2.800,00	+ 5,185.700,00
223/05/K	M 31	+ 3.500,00	+ 5,185.700,00
224/05/K	M 31	+ 3.150,00	+ 5,185.100,00



Claim Nr.	Ref.	Coordinates in Meter		
225/05/K	M 31	+	3.850,00	+ 5,185.100,00
226/05/K	M 31	+	3.500,00	+ 5,184.500,00
227/05/K	M 31	+	4.200,00	+ 5,184.500,00
228/05/K	M 31	+	3.150,00	+ 5,183.900,00
229/05/K	M 31	+	3.850,00	+ 5,183.900,00
230/05/K	M 31	+	4.550,00	+ 5,183.900,00
231/05/K	M 31	+	2.800,00	+ 5,183.300,00
232/05/K	M 31	+	3.500,00	+ 5,183.300,00
233/05/K	M 31	+	4.200,00	+ 5,183.300,00
234/05/K	M 31	+	4.900,00	+ 5,183.300,00
235/05/K	M 31	+	2.450,00	+ 5,182.700,00
236/05/K	M 31	+	3.150,00	+ 5,182.700,00
237/05/K	M 31	+	3.850,00	+ 5,182.700,00
238/05/K	M 31	+	4.550,00	+ 5,182.700,00
239/05/K	M 31	+	5.250,00	+ 5,182.700,00
240/05/K	M 31	+	2.800,00	+ 5,182.100,00
241/05/K	M 31	+	3.500,00	+ 5,182.100,00
242/05/K	M 31	+	4.200,00	+ 5,182.100,00
243/05/K	M 31	+	4.900,00	+ 5,182.100,00
244/05/K	M 31	+	5.600,00	+ 5,182.100,00
245/05/K	M 31	+	2.450,00	+ 5,181.500,00
246/05/K	M 31	+	3.150,00	+ 5,181.500,00
247/05/K	M 31	+	3.850,00	+ 5,181.500,00
248/05/K	M 31	+	4.550,00	+ 5,181.500,00
249/05/K	M 31	+	5.250,00	+ 5,181.500,00
250/05/K	M 31	+	2.800,00	+ 5,180.900,00
251/05/K	M 31	+	3.500,00	+ 5,180.900,00
252/05/K	M 31	+	4.200,00	+ 5,180.900,00
253/05/K	M 31	+	4.900,00	+ 5,180.900,00
254/05/K	M 31	+	5.600,00	+ 5,180.900,00
255/05/K	M 31	+	1.750,00	+ 5,180.300,00
256/05/K	M 31	+	2.450,00	+ 5,180.300,00
257/05/K	M 31	+	3.150,00	+ 5,180.300,00
258/05/K	M 31	+	3.850,00	+ 5,180.300,00
259/05/K	M 31	+	4.550,00	+ 5,180.300,00
260/05/K	M 31	+	5.250,00	+ 5,180.300,00
261/05/K	M 31	+	1.400,00	+ 5,179.700,00
262/05/K	M 31	+	2.100,00	+ 5,179.700,00
263/05/K	M 31	+	2.800,00	+ 5,179.700,00
264/05/K	M 31	+	3.500,00	+ 5,179.700,00
265/05/K	M 31	+	4.200,00	+ 5,179.700,00
266/05/K	M 31	+	4.900,00	+ 5,179.700,00
267/05/K	M 31	+	1.050,00	+ 5,179.100,00



Claim Nr.	Ref.	Coordinates in Meter	
268/05/K	M 31	+ 1.750,00	+ 5,179.100,00
269/05/K	M 31	+ 2.450,00	+ 5,179.100,00
270/05/K	M 31	+ 3.150,00	+ 5,179.100,00
271/05/K	M 31	+ 3.850,00	+ 5,179.100,00
272/05/K	M 31	+ 4.550,00	+ 5,179.100,00
273/05/K	M 31	+ 700,00	+ 5,178.500,00
274/05/K	M 31	+ 1.400,00	+ 5,178.500,00
275/05/K	M 31	+ 2.100,00	+ 5,178.500,00
276/05/K	M 31	+ 2.800,00	+ 5,178.500,00
277/05/K	M 31	+ 3.500,00	+ 5,178.500,00
278/25/K	M 31	+ 4.200,00	+ 5,178.500,00