



19 November 2018

ASX ANNOUNCEMENT

Anson Finalises Location of Pilot Plant

Highlights:

- **Lithium Pilot Plant to be located on Cane Creek 32-1 pad reducing infrastructure development, time and costs**
- **Utah Government grants oil, gas and associated hydrocarbons lease at Cane Creek 32-1**
- **Utah Government grants Mineral Salts lease at Cane Creek 32-1**
- **Both leases include the 10.6 acre area covered by the Cane Creek 32-1 oil well pad**

Anson Resources Ltd (Anson) is pleased to announce that it has finalised the location of the lithium pilot plant announced on 14 November 2018. The design and construction of the pilot plant incorporating Lilac Solutions ion exchange process to extract lithium without the use of evaporation ponds has commenced. A proposed layout of the pilot plant is shown in Figure 1.



Figure 1: Map showing the proposed location of the pilot plant on the Cane Creek 32-1 Well Pad.

Finalisation of the location follows the granting of State leases for Oil, Gas and Hydrocarbons (480 acres) and Mineral Salts and Potash Salts (640 acres) both of which cover the Cane Creek 32-1 pad area (10.6 acres) at the Paradox Lithium Project in Utah, (the Project) by the State of Utah School and Institutional Trust Lands Administration (SITLA), see Figure 2.

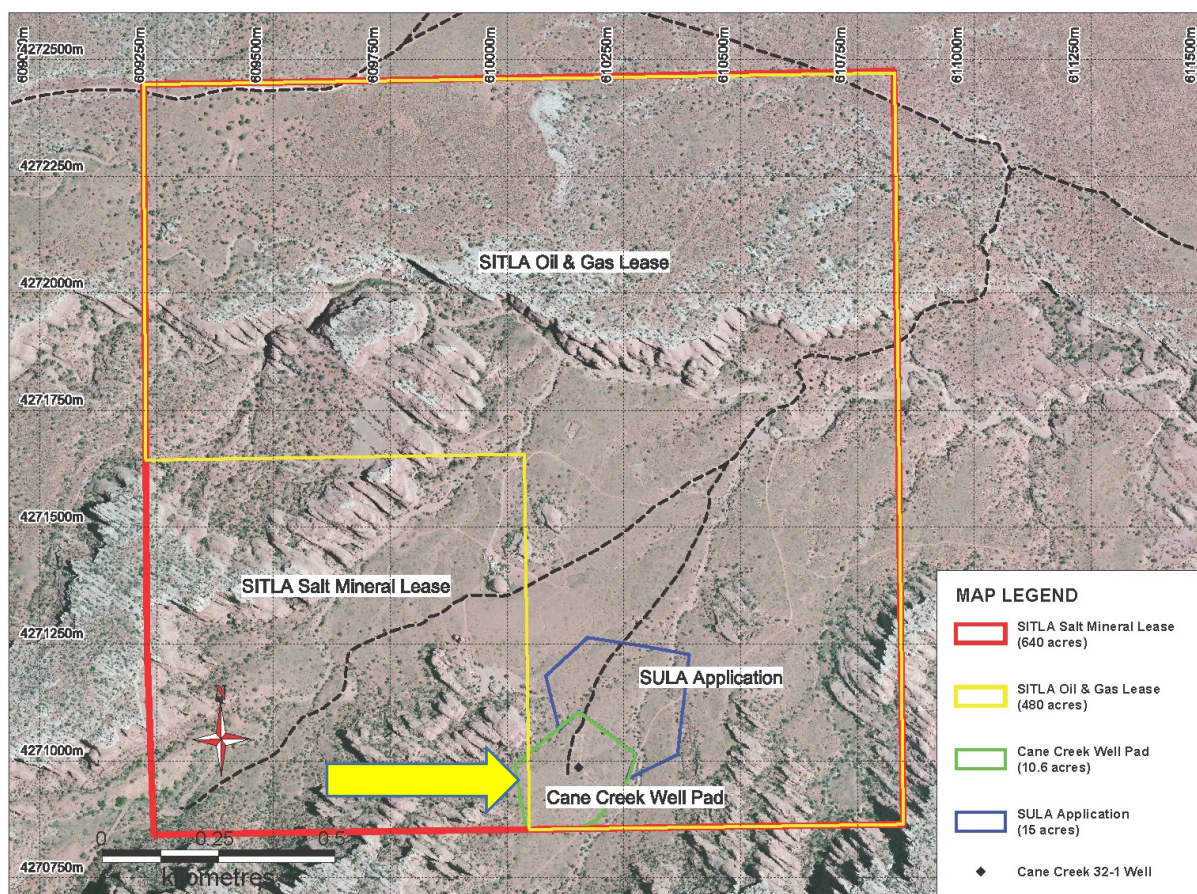


Figure 2: Plan showing the SITLA leases and the Cane Creek 32-1 pad.

Anson was able to successfully apply for the mineral salts lease because of the earlier purchase of the oil and gas lease. The granting of the lithium and salt lease is significant as it not only allows Anson to produce salts of Li, B, Br, I, Mg, Na and Ca as well as potassium salts but also enables Anson to build a pilot plant on the existing oil well pad, saving valuable time in advancing the project. The fenced Cane Creek 32-1 well pad covers an area of 10.6 acres (approximately 43,000 square meters) which is considered more than adequate for the planned pilot plant.

In addition to reducing the time required to build the pilot plant, significant costs will be also saved by utilizing the existing well pad which is construction-ready. In-situ buildings can be erected to contain the pilot plant equipment. This will allow the heated free flowing brine to run directly to the pilot plant, another cost-saving feature of the Project. Planning for the construction of the pilot plant building has commenced.

This strategically important oil and gas lease contains the Cane Creek 32-1 oil well where artesian flow of brine occurred during the recent sampling program. Owning the lease enables Anson to extract the oil and gas which could possibly be used in future production processing,



providing a low-cost source of energy for on-site power generation. Oil and gas have previously been produced from the Cane Creek 32-1 well. It is possible to extract both oil and gas and lithium brine from the same well from different clastic zones using separate tubing. Cognisant of this opportunity with the granting of the oil and gas lease when determining the location of the pilot plant, the Company has maintained the integrity of the oil and gas production facilities for possible future use.

Anson has previously announced that it had applied to SITLA for an Industrial Surface Use Lease Agreement (SULA) over an area adjacent to the well pad for the pilot plant. (see figure 2) This application remains current and this area will be used as the Company up-scales production.

Anson's Managing Director, Bruce Richardson, commented, "Finalising the location of the pilot plant is a further step to fast-tracking production of lithium products for testing by prospective off-take partners and progressing towards a pre-feasibility study. Locating the pilot plant at the Cane Creek 32-1 pad takes advantage of existing infrastructure, providing cost advantages for the Paradox Lithium Project. Strategically located in the centre of the project claims with artesian brine flow from an existing well, road access, power and with an existing construction ready pad, the Company has been successful in obtaining approval for the location of the pilot plant in a comparatively short timeframe, demonstrating its committed objective of bringing the project into production quickly while maintaining a focus on cost minimisation."

ENDS

For further information please contact:

Bruce Richardson
Managing Director

E: info@ansonresources.com

Ph: +61 8 9226 0299

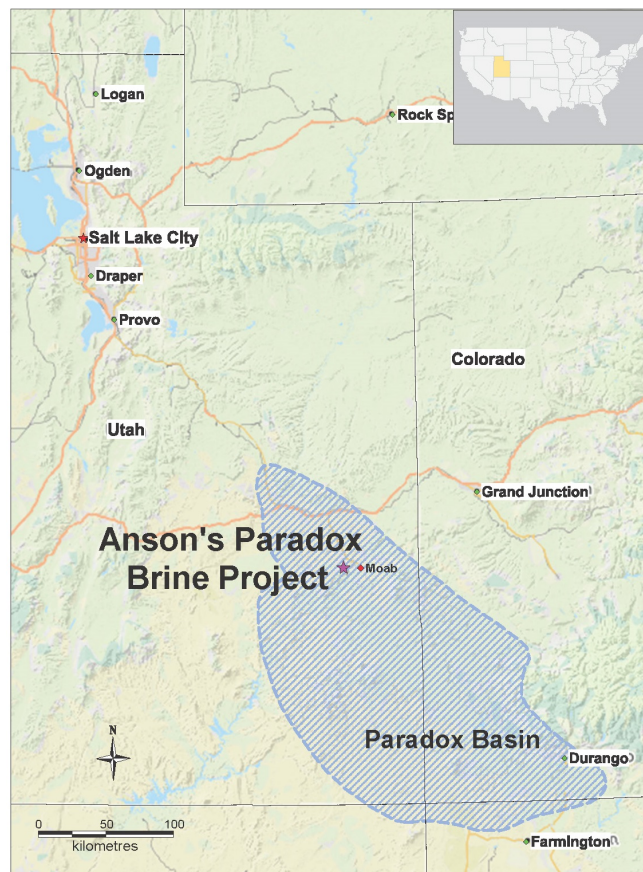
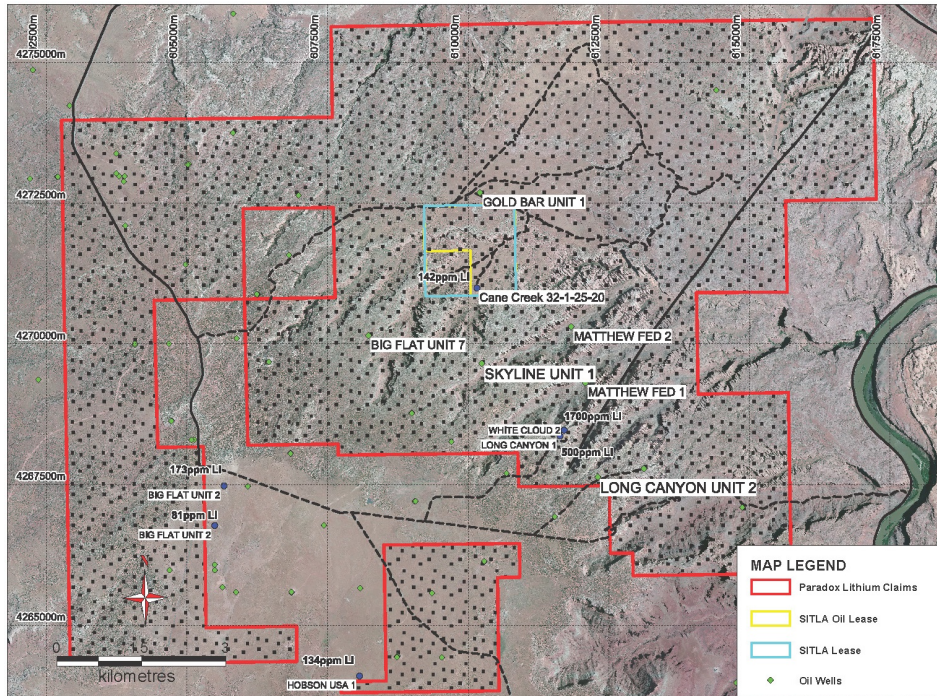
www.ansonresources.com

Follow us on Twitter [@anson_ir](https://twitter.com/anson_ir)

Forward Looking Statements: Statements regarding plans with respect to Anson's mineral projects are forward looking statements. There can be no assurance that Anson's plans for development of its projects will proceed as expected and there can be no assurance that Anson will be able to confirm the presence of mineral deposits, that mineralisation may prove to be economic or that a project will be developed.

About the Utah Lithium Project

Anson is targeting lithium rich brines in the deepest part of the Paradox Basin in close proximity to Moab, Utah. Lithium values of up to 1,700ppm have historically been recorded in close proximity to Anson's claim area. The location of Anson's claims within the Paradox Basin is shown below:





Competent Person's Statement: The information in this announcement that relates to exploration results and geology is based on information compiled and/or reviewed by Mr Greg Knox, a member in good standing of the Australasian Institute of Mining and Metallurgy. Mr Knox is a geologist who has sufficient experience which is relevant to the style of mineralisation under consideration and to the activity being undertaken to qualify as a "Competent Person", as defined in the 2012 Edition of the Australasian Code for Reporting of Exploration Results, Mineral Resources and Ore Reserves and consents to the inclusion in this report of the matters based on information in the form and context in which they appear. Mr Knox is a director of Anson and a consultant to Anson.

JORC CODE 2012 “TABLE 1” REPORT

Section 1 Sampling Techniques and Data

(Criteria in this section apply to all succeeding sections.)

Criteria	JORC Code explanation	Commentary
<p><i>Sampling techniques</i></p>	<ul style="list-style-type: none"> <i>Nature and quality of sampling (eg cut channels, random chips, or specific specialised industry standard measurement tools appropriate to the minerals under investigation, such as down hole gamma sondes, or handheld XRF instruments, etc). These examples should not be taken as limiting the broad meaning of sampling.</i> <i>Include reference to measures taken to ensure sample representivity and the appropriate calibration of any measurement tools or systems used.</i> <i>Aspects of the determination of mineralisation that are Material to the Public Report.</i> <i>In cases where ‘industry standard’ work has been done this would be relatively simple (eg ‘reverse circulation drilling was used to obtain 1 m samples from which 3 kg was pulverised to produce a 30 g charge for fire assay’). In other cases more explanation may be required, such as where there is coarse gold that has inherent sampling problems. Unusual commodities or mineralisation types (eg submarine nodules) may warrant disclosure of detailed information.</i> 	<p>Long Canyon Historic Wells (mentioned in report)</p> <ul style="list-style-type: none"> Mud Rotary (historic oil well). Chip cuttings were collected on continuous 10 feet intervals. and cuttings were stored at the USGS Core Research facility. Historically, brines were sampled only when flowed to surface. Samples were collected in a professional manner <p>Cane Creek 32-1-25-20 well</p> <ul style="list-style-type: none"> Mud Rotary (historic oil well). On re-entry, sampling of the supersaturated brines is to be carried out Samples were collected in IBC containers from which samples for assay were collected
<p><i>Drilling techniques</i></p>	<ul style="list-style-type: none"> <i>Drill type (eg core, reverse circulation, open-hole hammer, rotary air blast, auger, Bangka, sonic, etc) and details (eg core diameter, triple or standard tube, depth of diamond tails, face-sampling bit or other type, whether core is oriented and if so, by what method, etc).</i> 	<ul style="list-style-type: none"> Mud Rotary Drilling (18 ½” roller bit).
<p><i>Drill sample recovery</i></p>	<ul style="list-style-type: none"> <i>Method of recording and assessing core and chip sample recoveries and results assessed.</i> <i>Measures taken to maximise sample recovery and ensure representative nature of the samples.</i> <i>Whether a relationship exists between sample recovery and grade and whether sample bias may have occurred due to preferential loss/gain of fine/coarse material.</i> 	<p>Long Canyon Historic Wells</p> <ul style="list-style-type: none"> Not all wells were not cored, but cuttings were collected Cuttings were recovered from mud returns. <p>Cane Creek 32-1-25-20</p> <ul style="list-style-type: none"> Sampling of the targeted horizons was carried out at the depths interpreted from the newly completed geophysical logs. Clastic Zones 17, 19, 29, 31 and 33 to be sampled

JORC CODE 2012 “TABLE 1” REPORT

Criteria	JORC Code Explanation	Commentary
<i>Logging</i>	<ul style="list-style-type: none"> • <i>Whether core and chip samples have been geologically and geotechnically logged to a level of detail to support appropriate Mineral Resource estimation, mining studies and metallurgical studies.</i> 	<p>Long Canyon Historic Wells All cuttings from the historic oil wells were geologically logged in the field Cane Creek 32-1-25-20 well</p> <ul style="list-style-type: none"> • All cuttings were geologically logged in the field by a qualified geologist
	<ul style="list-style-type: none"> • <i>Whether logging is qualitative or quantitative in nature. Core (or costean, channel, etc.) photography.</i> • <i>The total length and percentage of the relevant intersections logged.</i> 	<ul style="list-style-type: none"> • Geological logging is qualitative in nature. • All the drillhole were logged.
<i>Sub-sampling techniques and sample preparation</i>	<ul style="list-style-type: none"> • <i>If core, whether cut or sawn and whether quarter, half or all core taken.</i> • <i>If non-core, whether riffled, tube sampled, rotary split, etc and whether sampled wet or dry.</i> • <i>For all sample types, the nature, quality and appropriateness of the sample preparation technique.</i> • <i>Quality control procedures adopted for all sub-sampling stages to maximise representivity of samples.</i> • <i>Measures taken to ensure that the sampling is representative of the in situ material collected, including for instance results for field duplicate/second-half sampling.</i> • <i>Whether sample sizes are appropriate to the grain size of the material being sampled,</i> 	<p>Long Canyon Historic Wells</p> <ul style="list-style-type: none"> • Sample size and quality were considered appropriate by operators/labs. <p>Cane Creek 32-1-2520</p> <ul style="list-style-type: none"> • Sampling followed the protocols produced by SRK for lithium brine sampling • Samples were collected in IBC containers and samples taken from them. • Duplicate samples kept Storage samples were also collected and securely stored • Bulk samples were also collected for future use. • Sample sizes were appropriate for the program being completed.
<i>Quality of assay data and laboratory tests</i>	<ul style="list-style-type: none"> • <i>The nature, quality and appropriateness of the assaying and laboratory procedures used and whether the technique is considered partial or total.</i> • <i>For geophysical tools, spectrometers, handheld XRF instruments, etc., the parameters used in determining the analysis including instrument make and model, reading times, calibrations factors applied and their derivation, etc.</i> • <i>Nature of quality control procedures adopted (e.g. standards, blanks, duplicates, external laboratory checks) and whether acceptable levels of accuracy (i.e. lack of bias) and precision have been established.</i> 	<p>Long Canyon Historic Wells</p> <ul style="list-style-type: none"> • Assaying was carried out by US laboratories • Quality and assay procedures are considered appropriate <p>Cane Creek 32-1</p> <ul style="list-style-type: none"> • The assays were carried out in a certified laboratory in Houston, USA which have experience in oil field brines • Duplicate samples kept (can be sent to an external lab) • Bulk sample (1000l) will be sent off for bench top test work

JORC CODE 2012 “TABLE 1” REPORT

Criteria	JORC Code explanation	Commentary
Verification of sampling and assaying	<ul style="list-style-type: none"> The verification of significant intersections by either independent or alternative company personnel. The use of twinned holes. Documentation of primary data, data entry procedures, data verification, data storage (physical and electronic) protocols. <i>Discuss any adjustment to assay data.</i> 	<p>Long Canyon Historic Wells</p> <ul style="list-style-type: none"> Assays are recorded in Concentrated Subsurface Brines UGS Special Publication 13, printed in 1965 <p>Cane Creek 32-1-25-20</p> <p>Documentation has been recorded and sampling protocols followed.</p>
Location of data points	<ul style="list-style-type: none"> Data spacing for reporting of Exploration Results. Whether the data spacing and distribution is sufficient to establish the degree of geological and grade continuity appropriate for the Mineral Resource and Ore Reserve estimation procedure(s) and classifications applied. <i>Whether sample compositing has been applied.</i> 	<p>Long Canyon Historic Wells and Cane Creek 32-1-25-20</p> <ul style="list-style-type: none"> The project is at an early stage and information is insufficient at this stage in regards to sample spacing and distribution.
Data spacing and distribution	<ul style="list-style-type: none"> Data spacing for reporting of Exploration Results. Whether the data spacing and distribution is sufficient to establish the degree of geological and grade continuity appropriate for the Mineral Resource and Ore Reserve estimation procedure(s) and classifications applied. Whether sample compositing has been applied. 	<ul style="list-style-type: none"> Data spacing is considered acceptable for a brine sample but has not been used in any Resource calculations No sample compositing has occurred.
Orientation of data in relation to geological structure	<ul style="list-style-type: none"> Whether the orientation of sampling achieves unbiased sampling of possible structures and the extent to which this is known, considering the deposit type. If the relationship between the drilling orientation and the orientation of key mineralised structures is considered to have introduced a sampling bias, this should be assessed and reported if material. 	<ul style="list-style-type: none"> All drill holes were drilled vertically (dip -90). Orientation has not biased the sampling
Criteria	JORC Code explanation	Commentary

JORC CODE 2012 “TABLE 1” REPORT

<i>Sample security</i>	The measures taken to ensure sample security.	Long Canyon Historic Wells <ul style="list-style-type: none"> • Sampling was carried out by US Geological Survey but sample security is not known • Cuttings from the drilling have been retained at the USGS Core Research facility Cane Creek 32-1-25-20 <ul style="list-style-type: none"> • Cuttings were obtained from USGS Core Research facility. • Sampling protocols were followed and chain of custody recorded.
<i>Audits or reviews</i>	<i>The results of any audits or reviews of sampling techniques and data.</i>	Long Canyon Historic Wells and Cane Creek 32-1-25-20 <ul style="list-style-type: none"> • No audits or reviews of the data have been conducted at this stage.

Section 2 Reporting of Exploration Results

(Criteria in this section apply to all succeeding sections.)

Criteria	JORC Code explanation	Commentary
<i>Mineral tenement and land tenure status</i>	<ul style="list-style-type: none"> • <i>Type, reference name/number, location and ownership including agreements or material issues with third parties such as joint ventures, partnerships, overriding royalties, native title interests, historical sites, wilderness or national park and environmental settings.</i> • <i>The security of the tenure held at the time of reporting along with any known impediments to obtaining a licence to operate in the area.</i> 	Long Canyon Wells <ul style="list-style-type: none"> • The wells are located on oil and gas leases, held by multiple oil companies • The project comprises 1317 granted placer claims, 1 SITLA mineral salts and 1 SITLA oil and gas lease in Utah. All claims are in good standing.
<i>Exploration done by other parties</i>	<ul style="list-style-type: none"> • <i>Acknowledgment and appraisal of exploration by other parties.</i> 	Long Canyon Historic Wells and Cane Creek 32-1-25-20 <ul style="list-style-type: none"> • Past exploration in the region was for oil exploration. • Brine analysis only carried out where flowed to surface during oil drilling.
<i>Geology</i>	<ul style="list-style-type: none"> • <i>Deposit type, geological setting and style of mineralisation.</i> 	<ul style="list-style-type: none"> • Oil was targeted within clastic layers (mainly Clastic Zone 43) Cane Creek 32-1-25-20 <ul style="list-style-type: none"> • Lithium is being targeted within the clastic layers in the Paradox Form.

JORC CODE 2012 “TABLE 1” REPORT

Criteria	JORC Code explanation	Commentary
<p><i>Drill hole Information</i></p>	<ul style="list-style-type: none"> • <i>A summary of all information material to the understanding of the exploration results including a tabulation of the following information for all Material drill holes:</i> <ul style="list-style-type: none"> ○ <i>easting and northing of the drill hole collar</i> ○ <i>elevation or RL (Reduced Level – elevation above sea level in metres) of the drill hole collar</i> ○ <i>dip and azimuth of the hole</i> ○ <i>down hole length and interception depth</i> ○ <i>hole length.</i> 	<p>Drillhole Summary: Long Canyon Historic Wells</p> <ul style="list-style-type: none"> • See previous ASN announcements (mentioned in text). <p>Cane Creek 32-1-25-20</p> <ul style="list-style-type: none"> • 610,154E, 4,270,986N • 5662 RL • 11,405 TD
	<ul style="list-style-type: none"> • <i>If the exclusion of this information is justified on the basis that the information is not Material and this exclusion does not detract from the understanding of the report, the Competent Person should clearly explain why this is the case.</i> 	
<p><i>Data aggregation methods</i></p>	<ul style="list-style-type: none"> • <i>In reporting Exploration Results, weighting averaging techniques, maximum and/or minimum grade truncations (eg cutting of high grades) and cut-off grades are usually Material and should be stated.</i> • <i>Where aggregate intercepts incorporate short lengths of high grade results and longer lengths of low grade results, the procedure used for such aggregation should be stated and some typical examples of such aggregations should be shown in detail.</i> • <i>The assumptions used for any reporting of metal equivalent values should be clearly stated.</i> 	<p>Long Canyon Historic Wells</p> <ul style="list-style-type: none"> • No weighting or cut-off grades have been applied. <p>Cane Creek 32-1-25-20</p> <ul style="list-style-type: none"> • No averaging or cut-off grades have been applied.
<p><i>Relationship between mineralisation widths and intercept lengths</i></p>	<ul style="list-style-type: none"> • <i>These relationships are particularly important in the reporting of Exploration Results.</i> • <i>If the geometry of the mineralisation with respect to the drill hole angle is known, its nature should be reported.</i> • <i>If it is not known and only the down hole lengths are reported, there should be a clear statement to this effect (e.g. ‘down hole length, true width not known’).</i> 	<p>Long Canyon Historic Wells and Cane Creek 32-1-25-20</p> <ul style="list-style-type: none"> • Exploration is at an early stage and information is insufficient at this stage. • Drill hole angle (-90) does not affect the true width of the brine

JORC CODE 2012 “TABLE 1” REPORT

Criteria	JORC Code explanation	Commentary
<i>Diagrams</i>	<ul style="list-style-type: none"> • <i>Appropriate maps and sections (with scales) and tabulations of intercepts should be included for any significant discovery being reported. These should include, but not be limited to a plan view of drill hole collar locations and appropriate sectional views.</i> 	<p>Long Canyon Historic Wells</p> <p>No new discoveries have occurred; all are historic results from the 1960's. Plans are shown in the text.</p>
<i>Balanced reporting</i>	<ul style="list-style-type: none"> • <i>Where comprehensive reporting of all Exploration Results is not practicable, representative reporting of both low and high grades and/or widths should be practiced to avoid misleading reporting of Exploration Results.</i> 	<p>Long Canyon Historic Wells</p> <ul style="list-style-type: none"> • Reporting of additional results, which are all historic, in the area is not practical as the claims are owned by numerous companies. <p>Cane Creek 32-1-25-20</p> <ul style="list-style-type: none"> • Exploration is at an early stage
<i>Other substantive exploration data</i>	<ul style="list-style-type: none"> • <i>Other exploration data, if meaningful and material, should be reported including (but not limited to): geological observations; geophysical survey results; geochemical survey results; bulk samples – size and method of treatment; metallurgical test results; bulk density, groundwater, geotechnical and rock characteristics; potential deleterious or contaminating substances.</i> 	<p>Long Canyon Historic Wells</p> <ul style="list-style-type: none"> • No additional exploration data is meaningful in relation to brines. <p>Cane Creek 32-1-25-20</p> <ul style="list-style-type: none"> • The exploration reported herein is still at an early stage.
<i>Further work</i>	<ul style="list-style-type: none"> • <i>The nature and scale of planned further work (eg tests for lateral extensions or depth extensions or large-scale step-out drilling).</i> • <i>Diagrams clearly highlighting the areas of possible extensions, including the main geological interpretations and future drilling areas, provided this information is not commercially sensitive.</i> 	<p>Long Canyon Historic Wells</p> <ul style="list-style-type: none"> • Historic oil wells and no future work is to be carried out as claim owned by multiple oil companies <p>Cane Creek 32-1-25-20</p> <ul style="list-style-type: none"> • Further work is required which includes mapping and other exploration programs such as further core drilling.