



LATIN RESOURCES LIMITED
ACN: 131 405 144

Unit 3, 32 Harrogate Street
West Leederville, Western Australia,
6007.

P 08 6117 4798
E info@latinresources.com.au
W www.latinresources.com.au

27 November 2018

PROJECTS UPDATE - ARGENTINA

HIGHLIGHTS

- **Progress with San Luis Permitting**
- **Catamarca Exploration**
- **UnCuyo University pilot plant - second stage testing completed**

Latin Resources Limited (ASX: LRS) (“Latin” or “the Company”) provides the following update on its various projects located in Argentina, South America.

Projects Update

San Luis

A social and environmental agreement has now been signed with the communities of San Francisco and Rio Gomez in the province of San Luis. This agreement, also referred to as a Community Peace Treaty, declared and confirmed the community's interest in actively participating in and supporting the development of a sustainable local mining industry based around known lithium deposits in the locality of the projects of Latin Resources known as Geminis, Don Gregorio, Maria Del Huerto and other mining concessions in the San Luis province.

The social and environmental community agreement is an important step in the objective of Latin Resources to assist the province of San Luis to become a leading lithium producer and to develop an environmentally friendly and economically sustainable lithium industry in San Luis province encompassing exploration, processing and production and the potential manufacture of batteries.

The agreement incorporates the following commitments and obligations on the part of the Company for the benefit of the local communities:

- Conduct educational and technical talks to the local communities on specific areas of mining and the environment in relation to the projects which Latin Resource owns or controls known as Geminis, Don Gregorio, Maria del Huerto and others in the province;
- Provide the mining IP and expertise in the development of hard rock lithium pegmatites.

- Provide free public courses in selected educational centers presented by expert mining professionals.
- Provide training and support to the community to generate jobs and services in the area.
- Promote and sponsor the participation of the community in social, sporting, recreational activities as a means to educate the communities with technical knowledge regarding the development of a lithium industry in San Luis province;

With the important social and environmental agreement now signed, the authorised representative of Latin Resources will now enter into discussions with the San Luis government with the intention of signing a Memorandum of Understanding (MOU) on behalf of the Company setting out the criteria to develop a lithium industry in the San Luis province including the potential manufacture of batteries and other associated products. The MOU will include the issue of exploration and drill permits and the granting of certain concessions to Latin Resources.

Once the permits have been approved drilling will commence on selected projects within San Luis where drill targets have already been identified.



Figure 1- The Geminis Pegmatite

The Latin Resources Geminis & Don Gregorio Project remains the focus of the exploration team in San Luis.

The project tenements contain numerous large under explored pegmatites with known spodumene mineralisation, most famously the Geminis Mine. The Company is working on a detailed approach to systematically map and sample the pegmatite field to identify potential for further lithium mineralization in the project area.

The exploration team has completed surveying of a proposed access route from the town of La Carolina. The Company has invited several machinery contractors to quote on the upgrading and construction of this access road. A remote drilling specialist has also been approached to provide options to the Company for early drill testing of the Geminis pegmatite.

Once permits have been received the exploration strategy will now include a first pass exploration drilling program to be conducted at the Geminis pegmatite. The objective of the short program will be to ensure the pegmatite is extensive along strike, thick and well mineralised throughout.

The early testing utilising a small portable rig will remove the costly aspect of road and pad construction and enable informed and de-risked investment decisions moving forward.



Figure 2 - Estanzuela spodumene pegmatite in San Luis

Further exploration attention has been on the extensive LRS tenement package throughout the remainder of the San Luis province including Estanzuela, Maria Del Huerto and the Trapiche pegmatites.

Catamarca

The Company has shifted focus from the known small scale spodumene occurrences in the Catamarca region to the large pegmatites swarms of the NW Alto.

The NW Alto hosts hundreds of underexplored pegmatites outcropping over several square kilometers. No modern exploration has been conducted in this area previously.

In mid-May the LRS geological team began the systematic mapping and sampling of these extensive swarms. Since then the exploration team has continued to improve their understanding of the area and remain optimistic that with further work they can identify valuable drill targets.

As previously reported, a rock chip of 1.219% Li₂O was identified from within one of the only small mines in the region, “Buena Estrella”, previously exploited for Beryl. The sample was not of any traditional lithium ore mineral however the exploration team is encouraged by the presence of lithium in the NW Alto and will continue to progress its understanding here.

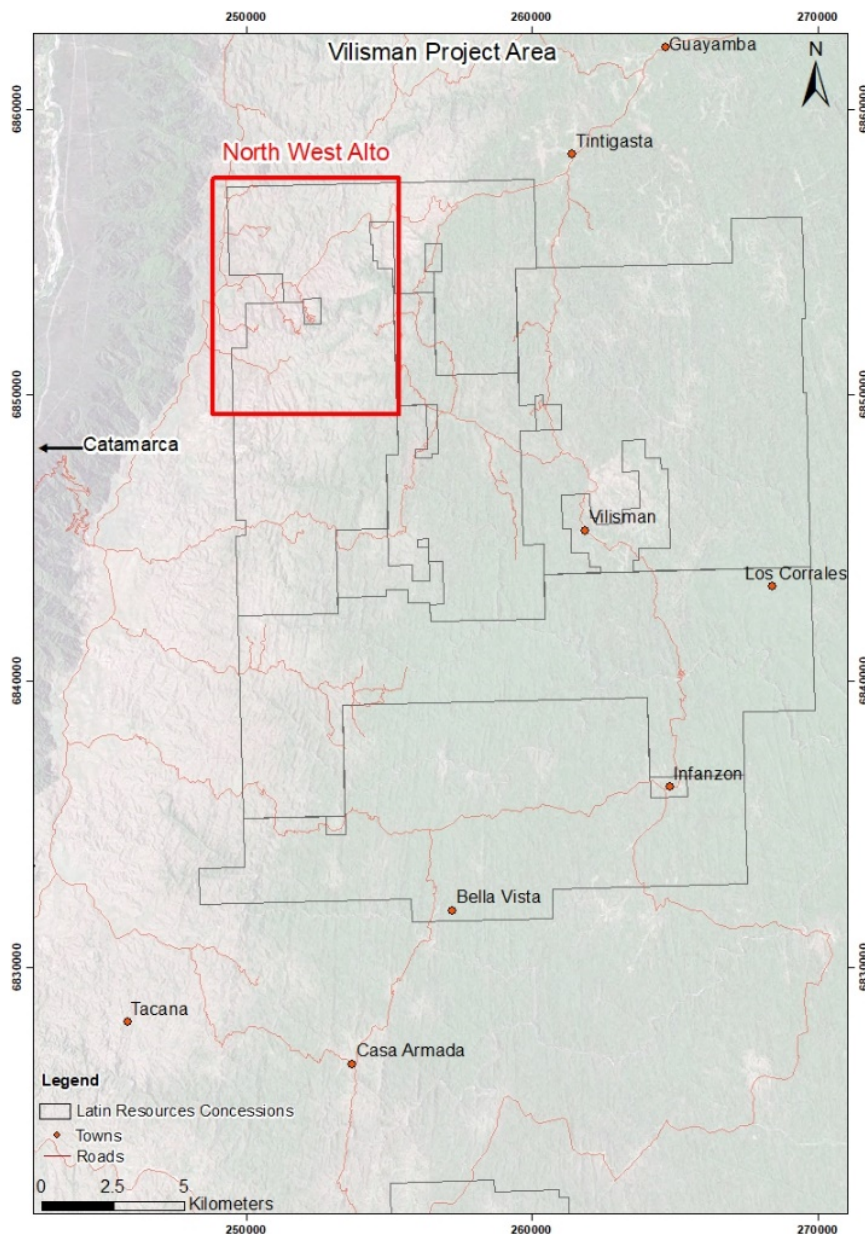


Figure 3 - Location of the NW Alto within Latin Resources Catamarca tenement package



Figure 4 - Location of the 1.219% Li₂O sample in the NW Alto. Note the location of numerous pegmatites in the region.

Drone footage of the NW alto pegmatites is available to view via the link below:

<https://youtu.be/ccdFWQorGxg>

The Company remains open in all aspects of its' Argentinian exploration endeavors continually evaluating opportunities for lithium and other commodities throughout its tenure.

Latin Resources explores all opportunities available to it in Latin America with a primary focus on lithium and other battery metals. Potential future acquisitions will be of quality Argentinian and international properties.

UnCuyo University, Mendoza, Argentina

The University has completed the second stage test work on the spodumene to lithium carbonate process pilot plant in Mendoza, Argentina with Latin Resources receiving an advanced technical report. The report presents the partial results of the experimental tests aimed at determining the best recovery conditions, by chemical precipitation, of the by-products of the leaching of α -spodumene with hydrofluoric acid (HF), in order to establish the conditions of maximum recovery of the by-products and with a minimum loss of lithium in each of the stages involved in this process. To carry out this study, the filtrates or solutions from the first pass testing of the mineral solution were used, largely from the tests detailed in the first report (see ASX quarterly report dated 31st October 2018). The next stage will involve determining the best way to extract lithium carbonate from the spodumene concentrate produced in the pilot plant.

JV Negotiations

The Company is in preliminary discussions with a number of different parties in relation to potential joint venture agreements or offtake arrangements in respect of its lithium assets in Argentina.

There remains strong interest from a number of parties to enter into a JV with the Company once the permitting issues are resolved.

Managing Director Chris Gale commented, “We are extremely pleased by the signing of the agreement between the Province of San Luis and the communities. It is an important milestone which will enable us at last to commence work on our lithium projects. The discussions with the government of San Luis province will now commence to establish a framework to develop a lithium industry after the exploration phase is completed by Latin Resources. Following the approval of the drilling permits for our San Luis projects the Company will move forward with our objective of developing our maiden JORC resource.”

Competent Person’s Statement

The information in this report that relates to Exploration Results and Exploration Targets is based on and fairly represents information and supporting documentation prepared by Mr Samuel Moyle (Exploration Manager of Latin Resources Limited). Mr Moyle is a member of the Australasian Institute of Mining and Metallurgy and has sufficient experience of relevance to the styles of mineralisation and types of deposits under consideration and to the activities undertaken to qualify as a Competent Person as defined in the 2012 Edition of the Joint Ore Reserves Committee (JORC) Australasian Code for Reporting of Exploration Results, Mineral Resources and Ore Reserves. Specifically, Mr Moyle consents to the inclusion in this report of the matters based on his information in the form and context in which they appear.

For further information please contact:

Chris Gale
Managing Director
Latin Resources Limited
+61 8 6117 4798

About Latin Resources

Latin Resources Limited is a mineral exploration company focused on creating shareholder wealth through the identification and definition of mineral resources in Latin America. The Company has secured over 173,000 hectares of exploration concessions in the lithium pegmatite districts of Catamarca, San Luis and Salta Provinces, Argentina as well as 22,000 hectares prospective for Cobalt in La Rioja.

The company also has a portfolio of projects in Peru and is actively progressing its Iron Oxide-Copper-Gold and Copper Porphyry projects in the Ilo region with its joint venture partner First Quantum Minerals Ltd.

Latin Resources recently divested its other Peruvian copper projects into Canadian listed company Westminster Resources (TSX-V; WMR) and is now Westminster's largest shareholder.

info@latinresources.com.au

www.latinresources.com.au

