



KORAB RESOURCES LIMITED

KORAB HOUSE

www.korab.com.au

18 January 2019

Issued Capital

Issued Shares: 309 Mln
Last Price: 2.6 cents
Market Cap: \$8.0 Mln

Listing Codes

ASX: KOR
BERLIN: C6S

Directors

Andrej K. Karpinski
Executive Chairman
Director

Rodney H. Skeet
Non-executive Director
(Independent)

Daniel A. Smetana
Non-executive Director
(Independent)

Anthony G. Wills
Non-executive Director
(Independent)

Projects

Winchester
(Rum Jungle, NT)
Magnesium carbonate
(MgCO₃)

Batchelor
(Rum Jungle, NT)
Au, Ag, Zn, Pb, Ni, Cu, Co, Sc,
Mn

Geolsec
(Rum Jungle, NT)
Phosphate rock
(P2O₅)
(Sub-leased to third party)

Mt. Elephant
(Ashburton, WA)
Au, Cu
(Optioned for sale)

Follow us on Twitter

@KorabResources

WINCHESTER MAGNESIUM CARBONATE PROJECT STRATEGY

Korab Resources Ltd ("Korab", or "Company") (ASX: KOR) and its subsidiaries ("Korab Group") are pleased to provide this update in respect of the Winchester magnesium carbonate project located near Darwin in the Northern Territory.

The Company has been progressing discussions and negotiations with potential buyers of raw magnesium carbonate rock, caustic calcined magnesite (CCM), and dead burned magnesite (DBM) for some time. This has culminated in the signing of an agreement with ZM Ropczyce reported to the market on 17 January 2019.

ZM Ropczyce is just one of the number of parties with whom Korab has been engaging regarding sales of DSO rock, CCM, and DBM and the Company is progressing the negotiations with other parties in parallel with the permitting of the magnesite quarry at Winchester which will provide the raw material for DSO sales and for processing into CCM, and DBM.

As reported to the market on 12 September 2018, the Company intends to produce raw magnesium carbonate rock which will be crushed and screened on-site at the Winchester quarry, as well as CCM, and DBM which will be processed off-site using toll-processing through kilns owned by third parties. Consequently the production of CCM and DBM will not require additional capital investment.

The targeted volumes of production and sales of DSO magnesium carbonate rock and toll-processed CCM, and DBM as outlined in the report of 12 September 2019 have not materially changed. The agreement with ZM Ropczyce reported on 17 January 2019 is a component of these aggregate volumes. The Company confirms that all material assumptions underpinning the production target, or the forecast financial information derived from a production target, in the initial public report titled "ADDITIONAL INFORMATION - WINCHESTER MAGNESITE FEASIBILITY STUDY UPDATE" released to the market on 12 September 2018 continue to apply and have not materially changed.

The Company aims to have the Winchester project in production in the second half of 2019, although this goal is subject to the quarry operator (Ausmag Pty Ltd, a wholly owned subsidiary of Korab) securing all required permits, and approvals, and completing the arrangements with relevant stakeholders.

Korab aims to supply the test batch of DBM to Ropczyce in the first half of 2019, using as the feedstock magnesium carbonate rock retained from historical test mining (see Figure 2).

The overall strategy of Korab is to secure several offtakes for magnesium carbonate rock, CCM, and/or DBM prior to commencing the operations at Winchester. At this point in time, our preference is to have the offtakes being subject to Korab being in a position to quarry the raw material, which means Korab having secured all required permits and approvals, completing the arrangements with relevant stakeholders, and completing the construction of the quarry and the related infrastructure. It is Korab's belief that this approach will reduce the operational and financial risks for the Company.

Korab reported on 30 November 2018 that it has expanded the agreement with the operator of Darwin Port to 800,000 tonnes per year to allow for additional volumes of magnesium carbonate rock to be shipped for toll-processing. This rock will be shipped through Darwin Port in addition to DSO magnesium carbonate rock.

The Company expects to fund the cost of the development of the quarry, quarrying costs, logistics, and the costs of toll-processing, as reflected in the announcement dated 12 September 2018, from



20 PROWSE STREET, WEST PERTH, WA, 6005, AUSTRALIA
PO BOX 1958, WEST PERTH, WA, 6872, AUSTRALIA
TEL (08) 9474 6166 FAX (08) 9322 6333
ACN 082 140 252



PAGE 1



KORAB RESOURCES LIMITED

KORAB HOUSE

www.korab.com.au

Issued Capital

Issued Shares: 309 Mln
Last Price: 2.6 cents
Market Cap: \$8.0 Mln

Listing Codes

ASX: KOR
BERLIN: C6S

Directors

Andrej K. Karpinski
Executive Chairman
Director

Rodney H. Skeet
Non-executive Director
(Independent)

Daniel A. Smetana
Non-executive Director
(Independent)

Anthony G. Wills
Non-executive Director
(Independent)

Projects

Winchester
(Rum Jungle, NT)
Magnesium carbonate
(MgCO₃)

Batchelor
(Rum Jungle, NT)
Au, Ag, Zn, Pb, Ni, Cu, Co, Sc,
Mn

Geolsec
(Rum Jungle, NT)
Phosphate rock
(P2O₅)
(Sub-leased to third party)

Mt. Elephant
(Ashburton, WA)
Au, Cu
(Optioned for sale)

Follow us on Twitter

@KorabResources

the prepayments for the offtakes, although other funding avenues (one of which is capital co-operation with an offtake partner, or partners) are also being explored and evaluated. The Company confirms that all material assumptions underpinning the production target, or the forecast financial information derived from a production target, in the initial public report titled *"ADDITIONAL INFORMATION - WINCHESTER MAGNESITE FEASIBILITY STUDY UPDATE"* released to the market on 12 September 2018 continue to apply and have not materially changed.

Magnesite market has undergone significant level of disruption due to Chinese government focusing on pollution control and environmental protection which resulted in many of the older and more polluting magnesium carbonate quarries and kilns located in China being shut down. This caused a sharp increase in prices for raw magnesium carbonate rock, CCM, and DBM in the global markets over the past 18 months.

Further updates regarding the Winchester magnesium carbonate project will be provided to the market as and when required.

ABOUT WINCHESTER

The proposed magnesium carbonate quarry at Winchester is located 2 km from the regional centre of Batchelor some 70km south of Darwin along Stuart Highway. Please refer to Figure 1 for details of the location of the proposed Winchester magnesium carbonate quarry, and Korab Group's various mineral tenements in the area. Deposit is at shallow depth and is covered by a thin layer (few meters) of unconsolidated clay and gravel (see Figure 2). Winchester magnesium carbonate rock can be quarried using drill and blast, shovel and truck method.

CONTACT PERSON:

Andrej K. Karpinski, Executive Chairman - Australia: (08) 9474 6166, International: +61 8 9474 6166

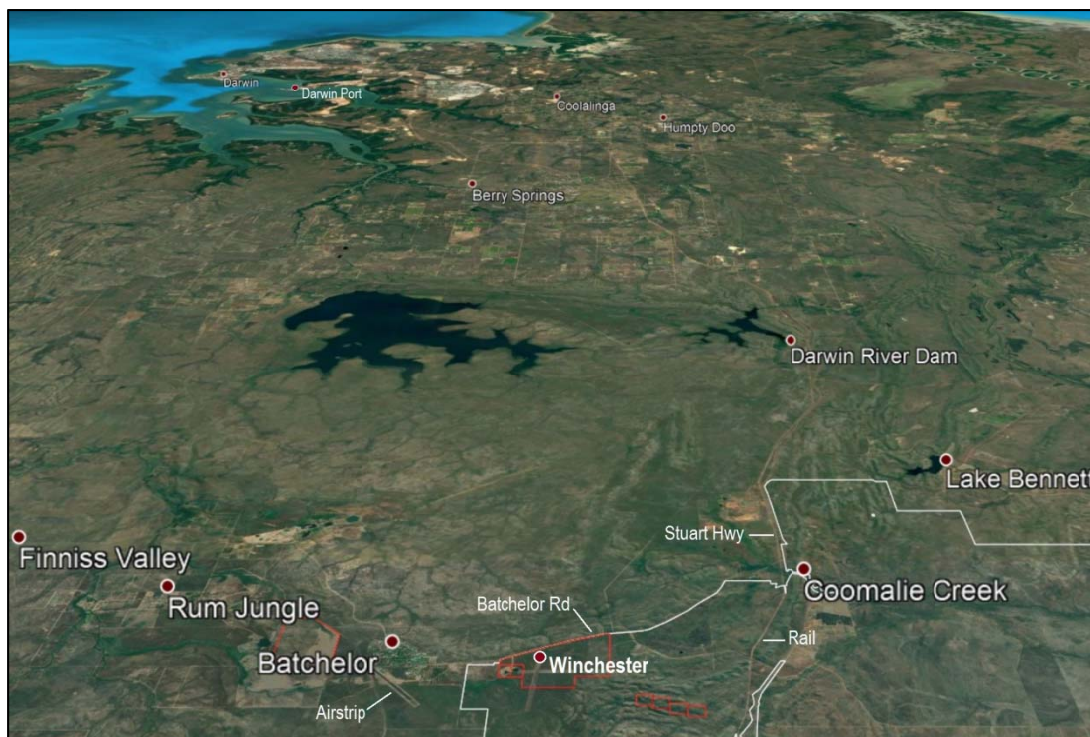


Figure 1 Location of Korab Group's mineral tenements (exploration leases in white and mining leases in red) and Winchester magnesium carbonate project relative to Darwin Port and basic infrastructure



20 PROWSE STREET, WEST PERTH, WA, 6005, AUSTRALIA
PO BOX 1958, WEST PERTH, WA, 6872, AUSTRALIA
TEL (08) 9474 6166 FAX (08) 9322 6333
ACN 082 140 252





KORAB RESOURCES LIMITED

KORAB HOUSE

www.korab.com.au

Issued Capital

Issued Shares: 309 Mln

Last Price: 2.6 cents

Market Cap: \$8.0 Mln

Listing Codes

ASX: KOR

BERLIN: C6S

Directors

Andrej K. Karpinski

Executive Chairman
Director

Rodney H. Skeet

Non-executive Director
(Independent)

Daniel A. Smetana

Non-executive Director
(Independent)

Anthony G. Wills

Non-executive Director
(Independent)

Projects

Winchester
(Rum Jungle, NT)

Magnesium carbonate
(MgCO₃)

Batchelor
(Rum Jungle, NT)

Au, Ag, Zn, Pb, Ni, Cu, Co, Sc,
Mn

Geolsec
(Rum Jungle, NT)

Phosphate rock
(P2O₅)
(Sub-leased to third party)

Mt. Elephant
(Ashburton, WA)

Au, Cu
(Optioned for sale)

Follow us on Twitter

@KorabResources

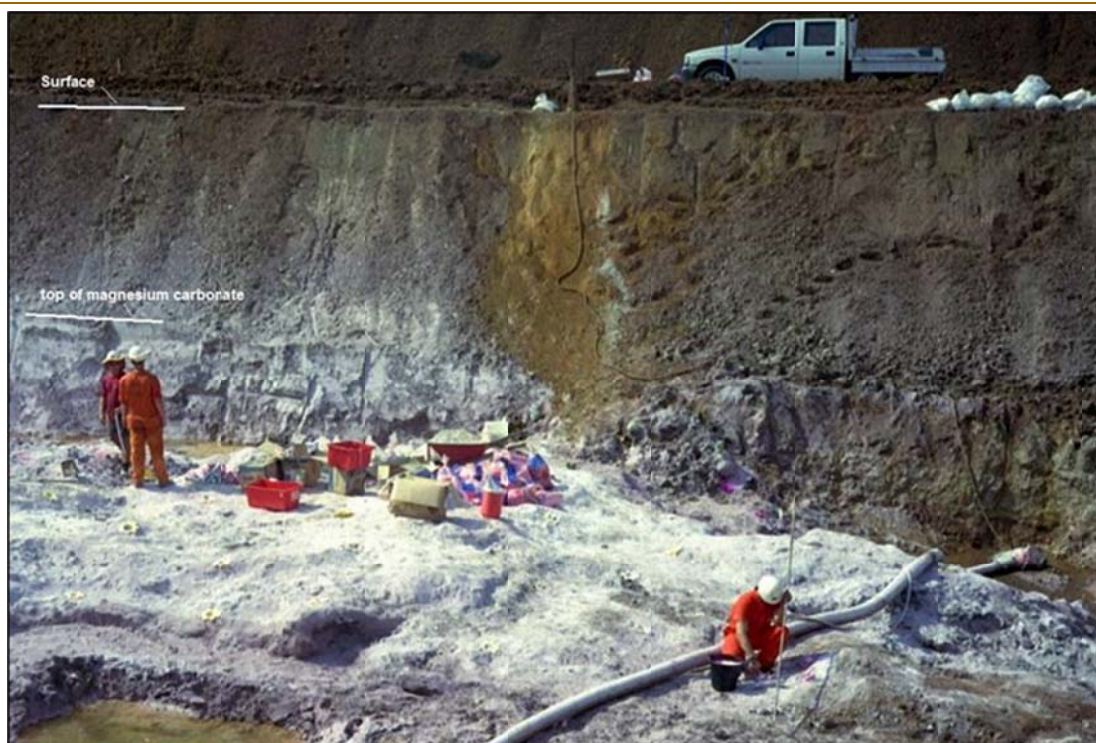


Figure 2 Test mining of magnesium carbonate at Winchester (setting of explosive charges)

ABOUT KORAB RESOURCES

Korab Resources Ltd is an international mining and exploration company with operations in Australia and Europe. Korab's projects include Winchester magnesium carbonate deposit at Batchelor in the Northern Territory of Australia, Geolsec phosphate rock deposit also at Batchelor, and other gold, silver, copper, cobalt, nickel, and polymetallic projects in Australia and overseas. More information about Korab's projects can be sourced from Korab's website at www.korab.com.au. Korab's shares are traded on Australian Securities Exchange (ASX) and on the Berlin Stock Exchange (Berliner Börse) through Equiduct electronic trading platform.

DISCLAIMER AND CAUTIONARY STATEMENT

Forward-looking statements are statements that are not historical facts. Words such as "expect(s)", "expected", "feel(s)", "believe(s)", "will", "may", "anticipate(s)", "should", "envisage(s)" and similar expressions are intended to identify such forward-looking information. This information includes, but is not limited to statements regarding future exploration results, resources, or reserves, and production. Anyone reading this report is cautioned not to place undue reliance on these forward-looking statements. All of such statements are subject to risks and uncertainties (many of which are difficult to predict and which generally are beyond the control of the Company) that could cause actual results to differ materially from those expressed in, or implied or projected by, the forward-looking information and statements. These risks and uncertainties include, but are not limited to: those relating to the interpretation of exploration results (including drill results), the geology, grade and continuity of mineral deposits and conclusions of economic evaluations; risks relating to possible variations in reserves, grade, mining dilution, ore loss, and recovery rates; risks relating to changes in project financial and technical parameters; risks relating to the potential for delays in exploration programs, project evaluation/review, completion of feasibility studies and project development; risks related to commodity prices and foreign exchange rate fluctuations; risks related to failure to secure adequate financing on a timely basis and on acceptable terms; risks related to delays in obtaining governmental, or other permits and approvals; risks related to security of tenure; and other risks and



20 PROWSE STREET, WEST PERTH, WA, 6005, AUSTRALIA
PO BOX 1958, WEST PERTH, WA, 6872, AUSTRALIA
TEL (08) 9474 6166 FAX (08) 9322 6333
ACN 082 140 252



PAGE 3



KORAB RESOURCES LIMITED

KORAB HOUSE

www.korab.com.au

uncertainties related to the Company's prospects, properties and business strategy. Any forward-looking information contained in this report is provided as of the date of this report. Except as required under applicable listing rules and securities laws, the Company does not intend, and does not assume any obligation, to update this forward-looking information.

Issued Capital

Issued Shares: 309 Mln
Last Price: 2.6 cents
Market Cap: \$8.0 Mln

Listing Codes

ASX: KOR
BERLIN: C6S

Directors

Andrej K. Karpinski
Executive Chairman
Director

Rodney H. Skeet
Non-executive Director
(Independent)

Daniel A. Smetana
Non-executive Director
(Independent)

Anthony G. Wills
Non-executive Director
(Independent)

Projects

Winchester
(Rum Jungle, NT)
Magnesium carbonate
(MgCO₃)

Batchelor
(Rum Jungle, NT)
Au, Ag, Zn, Pb, Ni, Cu, Co, Sc,
Mn

Geolsec
(Rum Jungle, NT)
Phosphate rock
(P₂O₅)
(Sub-leased to third party)

Mt. Elephant
(Ashburton, WA)
Au, Cu
(Optioned for sale)

Follow us on Twitter

@KorabResources



20 PROWSE STREET, WEST PERTH, WA, 6005, AUSTRALIA
PO BOX 1958, WEST PERTH, WA, 6872, AUSTRALIA
TEL (08) 9474 6166 FAX (08) 9322 6333
ACN 082 140 252

