



**Riversgold Ltd**

# **New Discoveries in World-Class Gold Terranes**

**Vancouver Resources and Investment Conference – 2019**

**Allan Kelly**  
**Managing Director**

# Riversgold - Investment Highlights

- ASX-listed exploration company with **highly prospective exploration projects** in two **world-class gold terranes**:
  - **Eastern Goldfields of Western Australia**
  - **Tintina Gold Province, SW Alaska, USA**
- **Looking for a large IOCG deposit** in the **Olympic Cu-Au Province** of South Australia
- Management **track record of successful exploration, discovery, development and production**
- **Regular news flow since listing in October 2017**:
  - New high-grade gold discoveries at **Farr-Jones** and **Cutler**
  - **First Alaskan field season identifies multiple new high-grade gold occurrences along 40km North Fork Fault**
  - Drilling underway at large **Queen Lapage** gold target
  - Giant **Churchill Dam** IOCG target permitted/ready to drill



# Riversgold - Corporate Snapshot

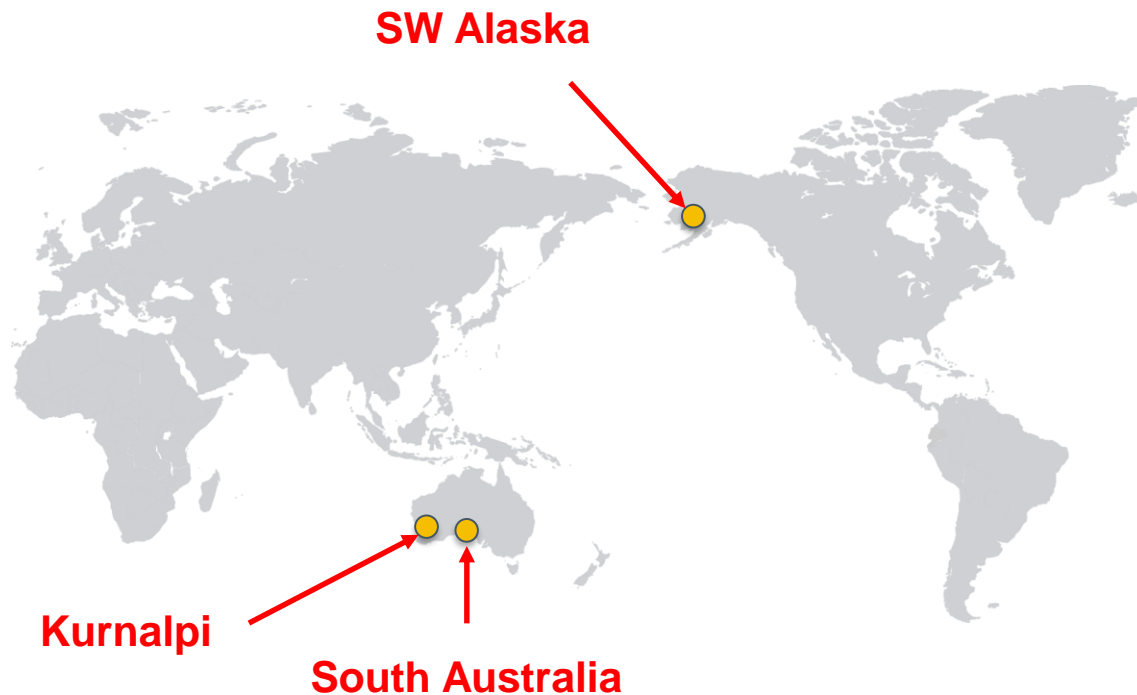
**Aim: “To create superior value for its Shareholders by discovering and monetising world-class mineral deposits.”**

Board	
<b>Rod Webster</b> <i>Non Exec. Chair</i>	Mining Engineer with >40 years experience Ex Western Metals, First Quantum, Weatherly
<b>Allan Kelly</b> <i>Managing Director</i>	Geologist with >25 years experience Founding MD, Doray Minerals Ltd (2009-2016): <ul style="list-style-type: none"> <li>• Best performing ASX IPO of 2010</li> <li>• GMJ “Explorer of the Year”, 2011</li> <li>• AMEC “Prospector Award”, 2014</li> </ul> Managed funding/construction of two new WA gold mines within 4 years: <ul style="list-style-type: none"> <li>• Andy Well – 2013</li> <li>• Deflector – 2016</li> </ul>
<b>Jeff Foster</b> <i>Non Exec. Director</i>	Geologist with >30 years experience Formerly BHP, Sirius, S2R

ASX Code	RGL
Shares on Issue	91.3M
Market Cap (@ 7c)	\$6.4M
Cash (Dec 2018)	\$1.1M
Enterprise Value	\$5.3M

Major Shareholders	%
<b>Evolution Mining Ltd</b>	<b>17.2</b>
Greenwich Equities Pty Ltd	15.4
Citymist Holdings Pty Ltd	8.2
Board and Management	10.0
<b>Top 20 Shareholders</b>	<b><u>64.4</u></b>

# Exploring in world-class gold provinces



	Kurnalpi, WA	South Australia	SW Alaska
<b>Location</b>	<b>Eastern Goldfields</b>	<b>Olympic Cu-Au Province</b>	<b>Tintina Gold Province</b>
<b>Deposit type</b>	Mesothermal lode <b>Gold</b>	Iron-Oxide Copper- <b>Gold</b>	Intrusion-Related <b>Gold</b>
<b>Target</b>	Near-term development opportunities near existing processing plants	Large stand-alone IOCG project	Large high-grade stand-alone gold project
<b>Target size</b>	Up to 2Moz Au	+100Mt @ 1% Cu, 1 g/t Au	+4Moz Au
<b>Examples</b>	various	Olympic Dam Carrapateena Prominent Hill	Donlin Creek Pogo Fort Knox

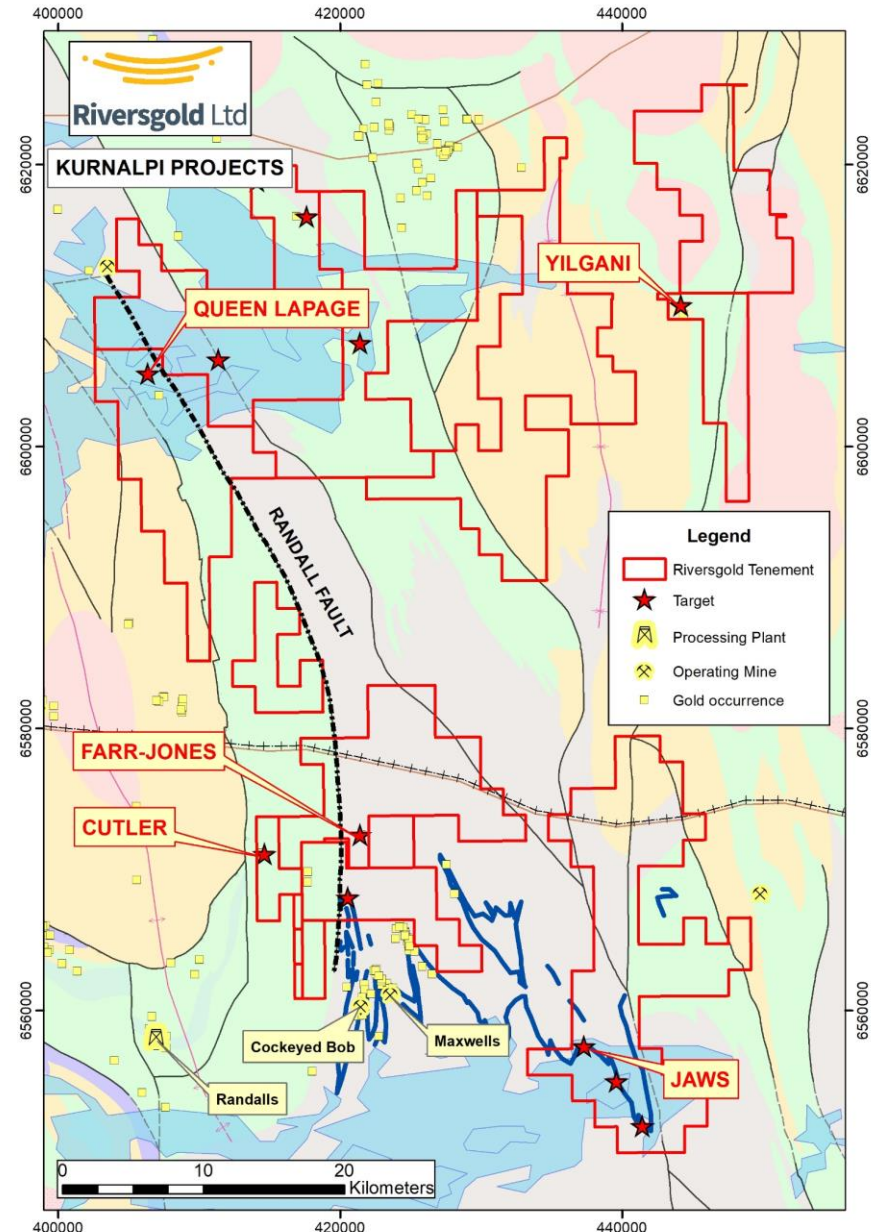
# Multiple high-quality targets to be tested...

Project	Target Generation	Drill Testing	Advanced Exploration	Resource Drilling
Kurnalpi	Reef Tank Well Acra South Coffee Swamp Lady of the Lake Venetian Jaws <i>(Randall Hill)</i>	<b>Queen Lapage Horan Eales Little</b>	<b>Farr-Jones Cutler</b>	
Alloy JV	Paradise Patch			
Yilgani	North Target East Target	<b>West Target</b>		
South Australia	Burt Lagoon	<b>Churchill Dam</b>		
SW Alaska	Gemuk Midway Hill	Luna Quicksilver		

**Key drill targets to be tested in 1H 2019 (pending approvals)**  
*(Tenement applications pending grant)*

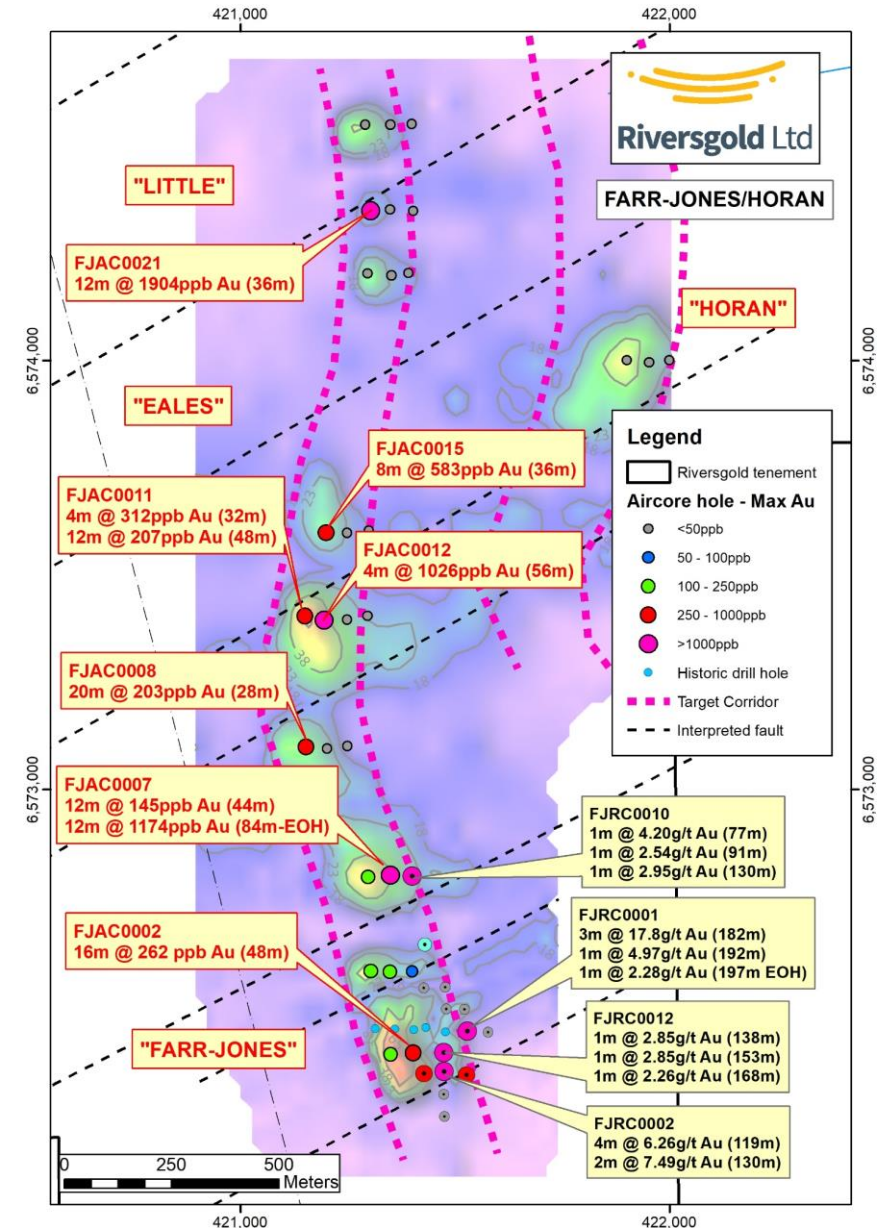
# Kurnalpi Projects, WA

- Strategic land position on the “**Randall Fault**”, 70km east of Kalgoorlie/Boulder, WA
  - Limited drilling >100m deep
  - Proximity to operating mines and processing plants
- Since listing in Oct 2017:
  - New high-grade discovery at **Farr-Jones**
  - New gold discoveries at **Eales** and **Little**
  - High-grade oxide and primary gold at **Cutler**
  - Drilling underway at **Queen Lapage**
  - Recent tenement applications expand land position around new discoveries



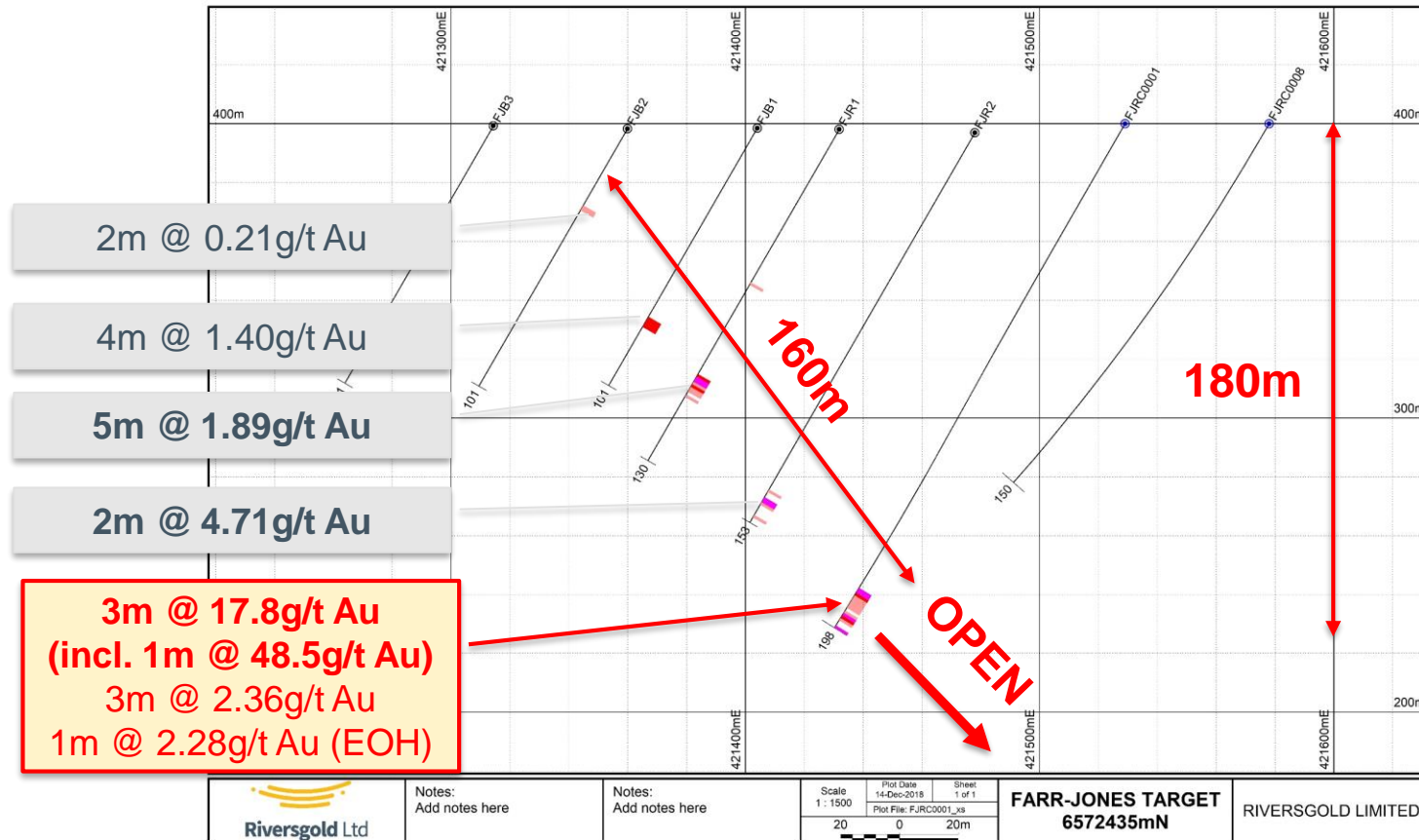
# Farr-Jones/Horan (RGL 80%)

- Drilling confirms **potential for multiple gold occurrences over >2.5km of strike**
- RC drilling identified E-dipping **high-grade gold mineralisation** in black shale at:
  - Farr-Jones** – up to **3m @ 17.8g/t Au**
  - North Farr-Jones** – up to **1m @ 4.20g/t Au**
- Aircore drilling intersects additional gold mineralisation at **Eales** and **Little** targets
  - Eales** – **4m @ 1.03g/t Au**
  - Little** – **12m @ 1.90g/t Au**
- Follow-up drilling and soil sampling planned
- Land position expanded with new applications



\* See ASX Releases 2 July, 13 August, 17 Oct, 23 Oct, 26 Nov 2018, 16 Jan 2019

# Farr-Jones - high-grade gold discovery open at depth

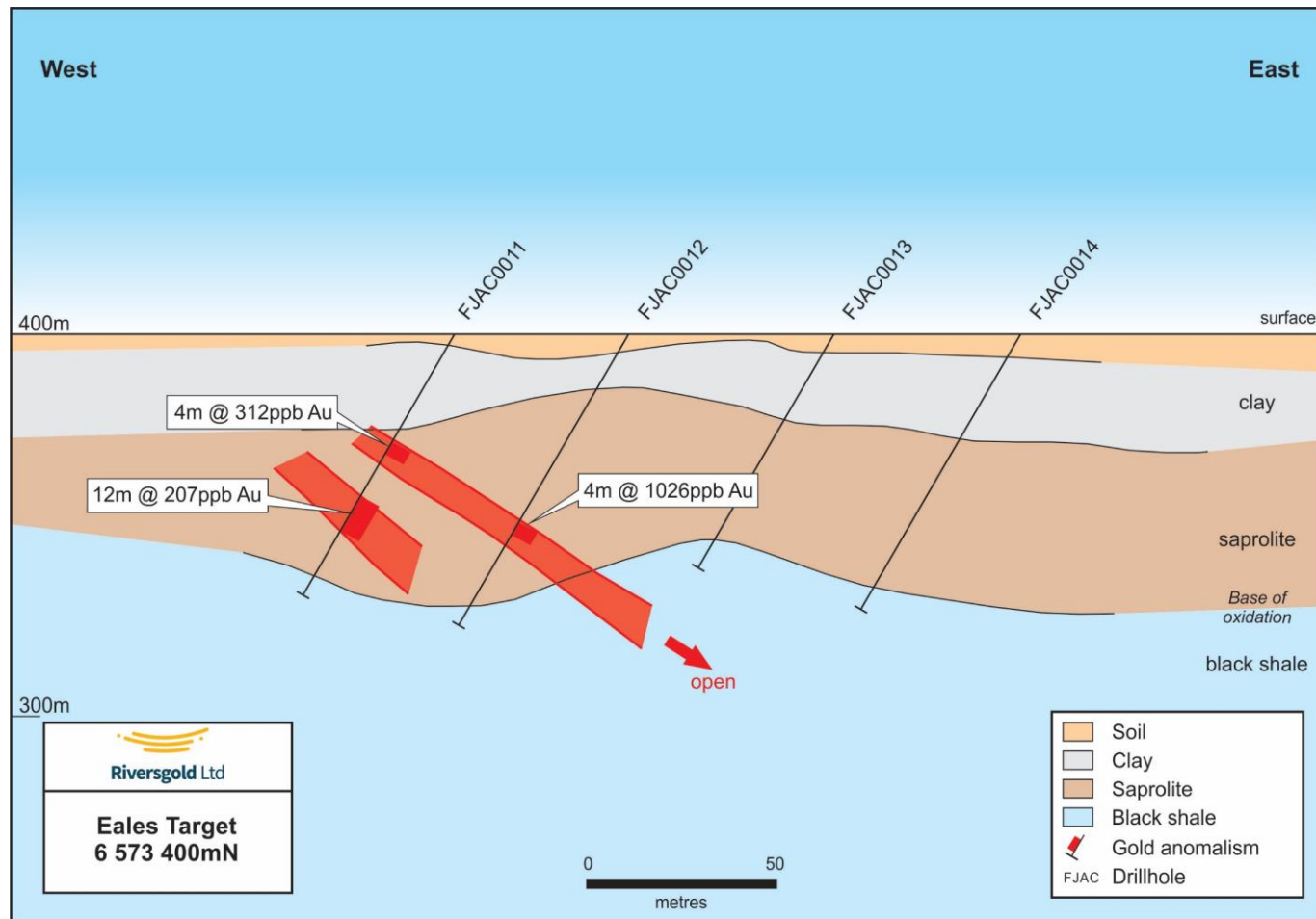


- 700m long soil anomaly
- High-grade RC intersections:
  - 3m @ 17.8g/t Au
  - 4m @ 6.26g/t Au
  - 2m @ 7.45g/t Au
  - 1m @ 4.97g/t Au
  - 1m @ 4.20g/t Au
- Recent aircore results:
  - 12m @ 1174ppb Au
  - 16m @ 262ppb Au
  - 12m @ 145ppb Au

\* See ASX Releases 2 July, 13 August, 17 Oct, 23 Oct, 26 Nov 2018

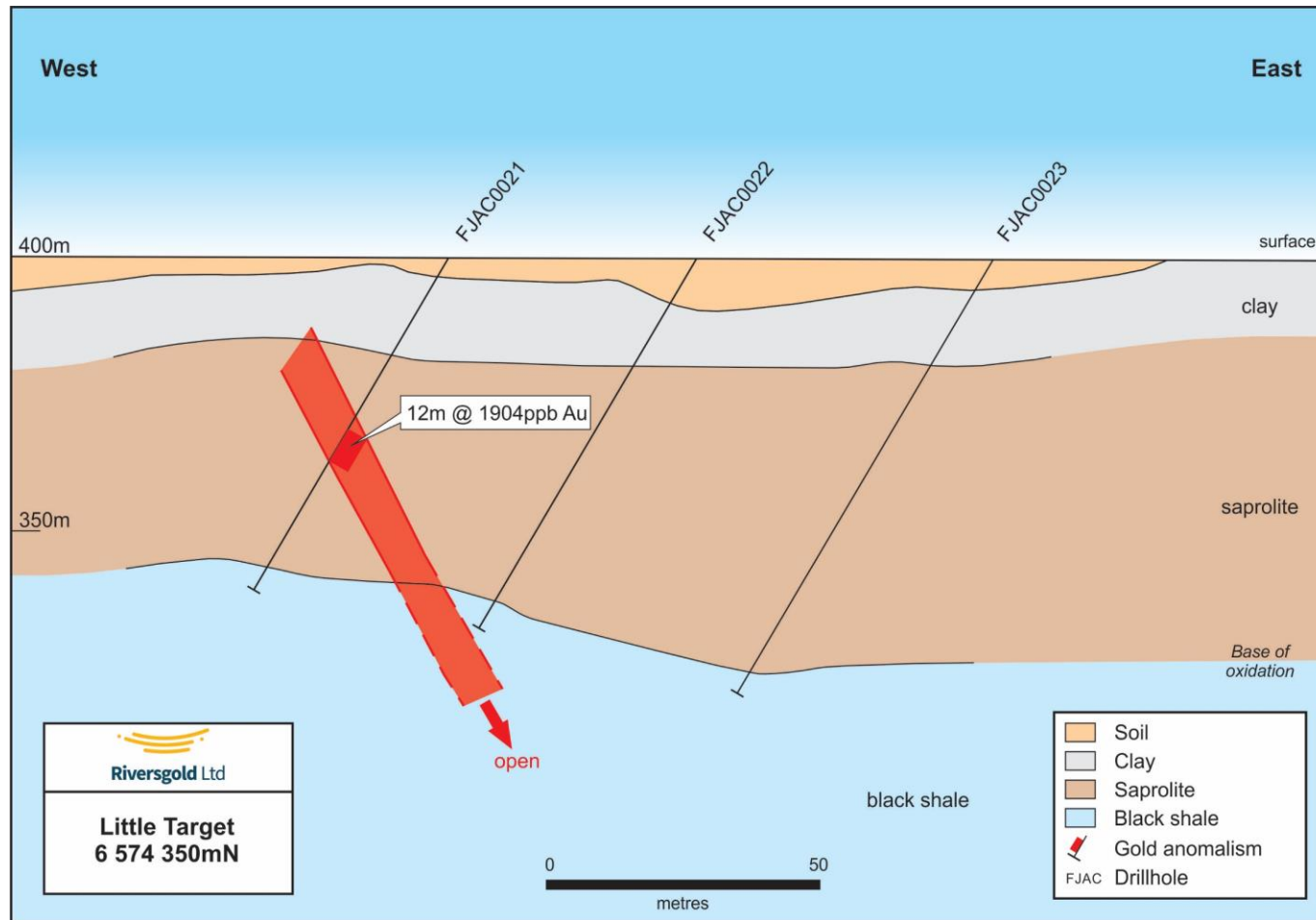


# Eales Prospect - new discovery under soil anomaly



- 700m long soil anomaly
- Significant gold mineralisation intersected on three drill sections
- Open at depth

# Little Prospect - new discovery under soil anomaly

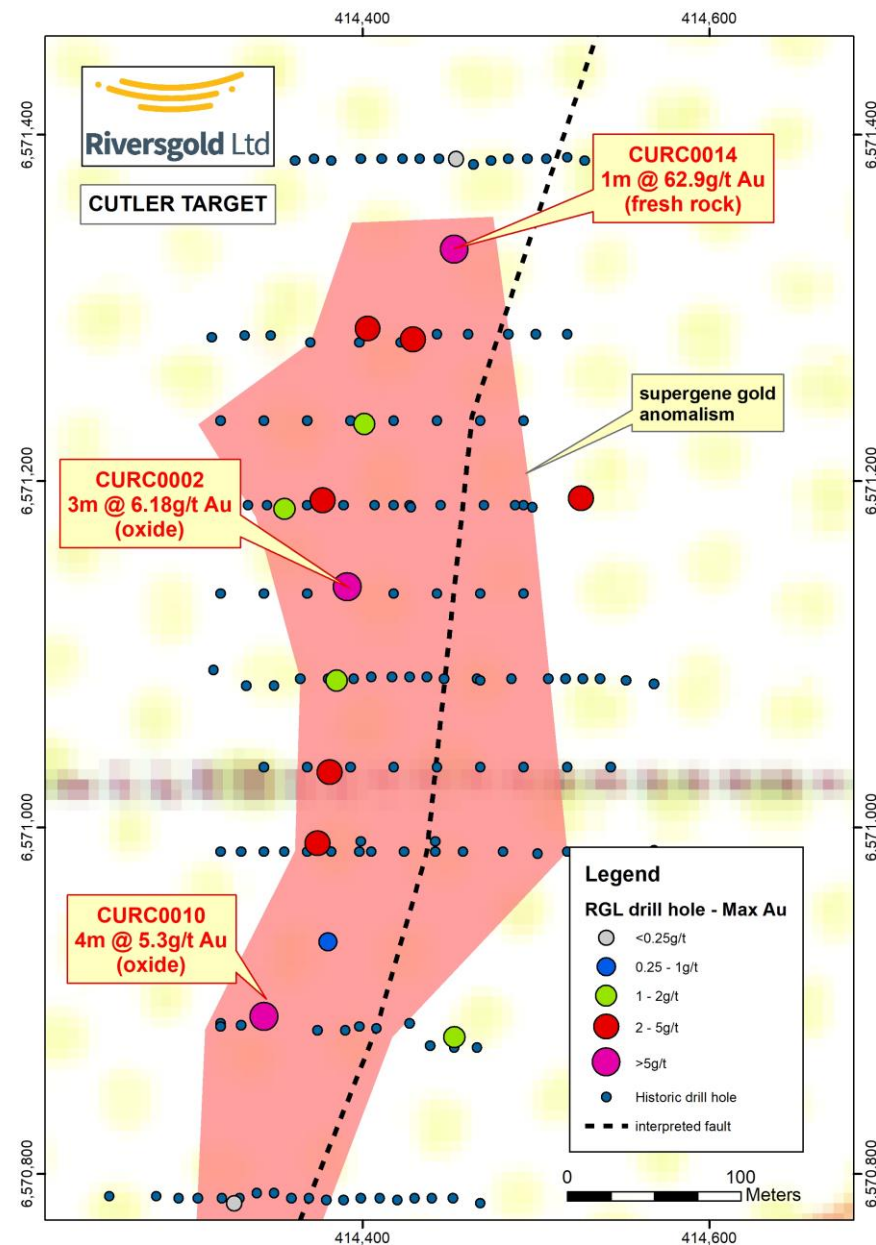


- 450m long soil anomaly
- **FJAC0021**
  - 12m @ 1.90g/t Au from 36m
  - Incl. 8m @ 2.82g/t Au
- Open at depth

# Cutler Target

- High grade oxide gold and mineralised structure:
- Oxide zone results:
  - 10m @ 11.0g/t Au
  - 4m @ 5.3g/t Au
  - 3m @ 6.18g/t Au
  - 6m @ 11.1g/t Au
  - 1m @ 19.0g/t Au
- Primary mineralisation:
  - 1m @ 62.9g/t Au – open down plunge
  - 2m @ 3.9g/t Au
  - 3m @ 2.2g/t Au
  - 10m @ 1.3g/t Au

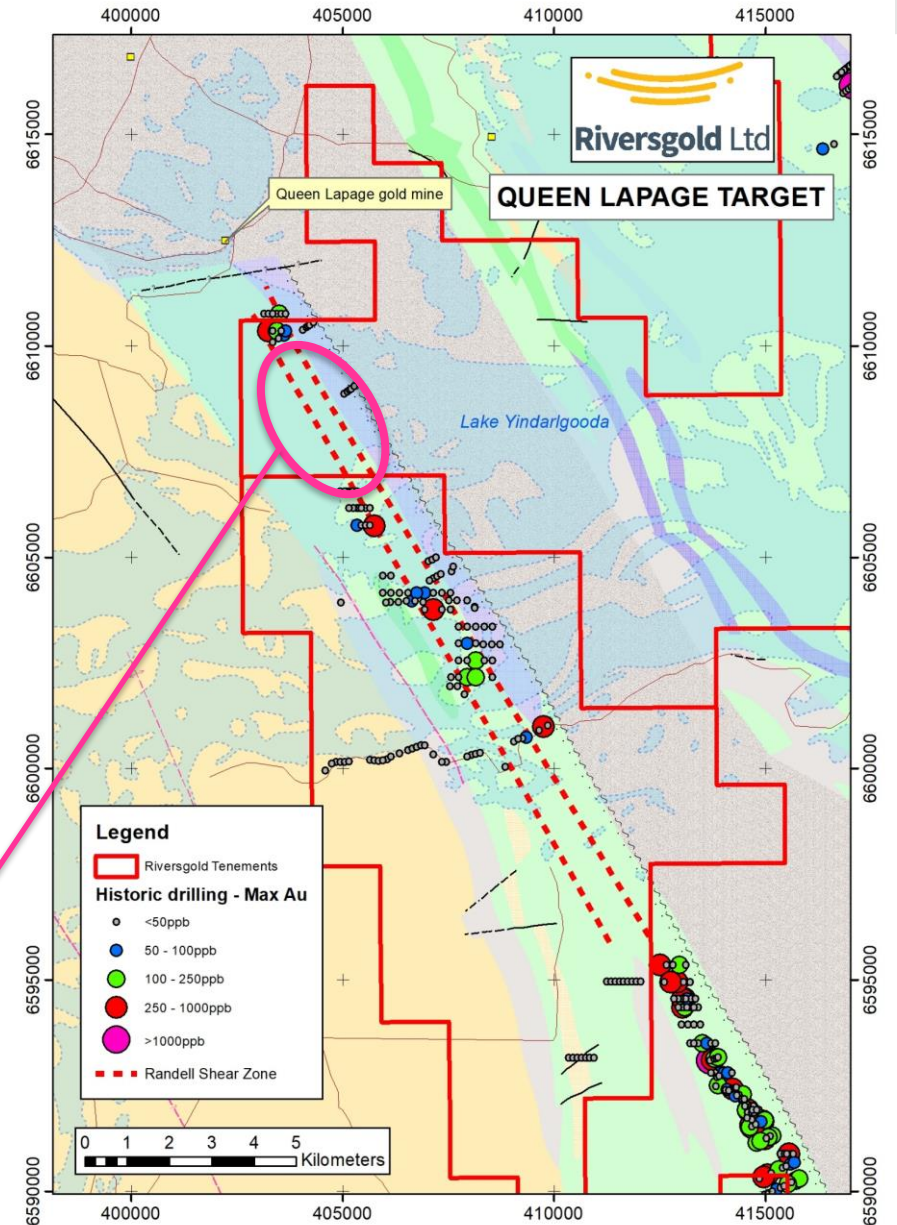
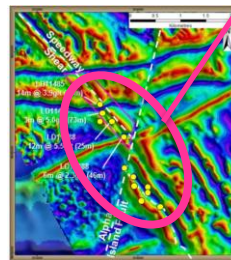
\*See ASX Releases dated 26 February, 8<sup>th</sup> June , 25th July 2018



# Queen Lapage (RGL 80%)

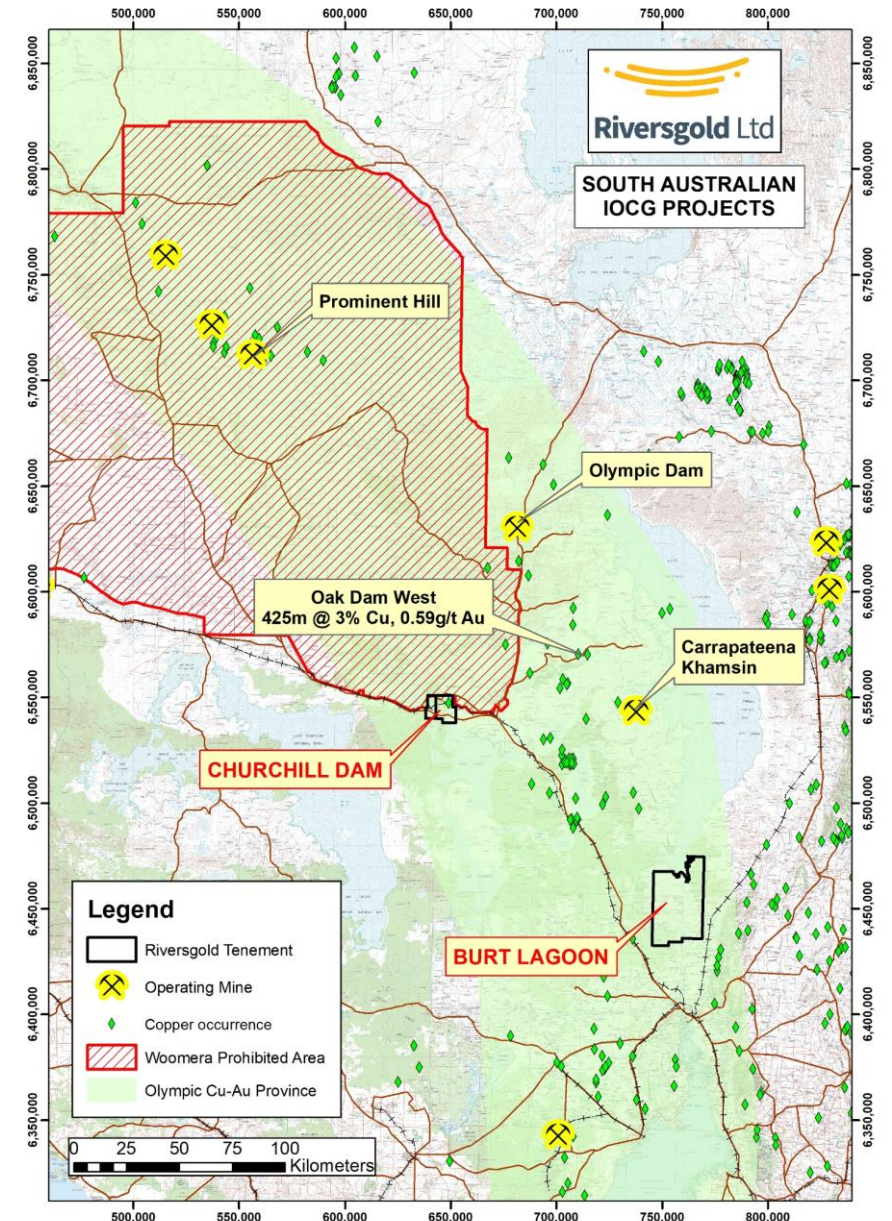
- Potential for large gold deposit(s) under salt lake
- **17km segment of mineralised “Randall Shear Zone”** - 11km under Lake Yindarlgooda
- Anomalous gold in shallow historical drilling along major mafic/ultramafic/sediment contact
- Numerous late NE-trending brittle faults
  - felsic/sedimentary rocks untested
- Similarities to geology/setting of +2Moz Invincible deposit
- **First aircore drilling campaign underway**

*Invincible discovery  
diamond drill holes at  
same scale*



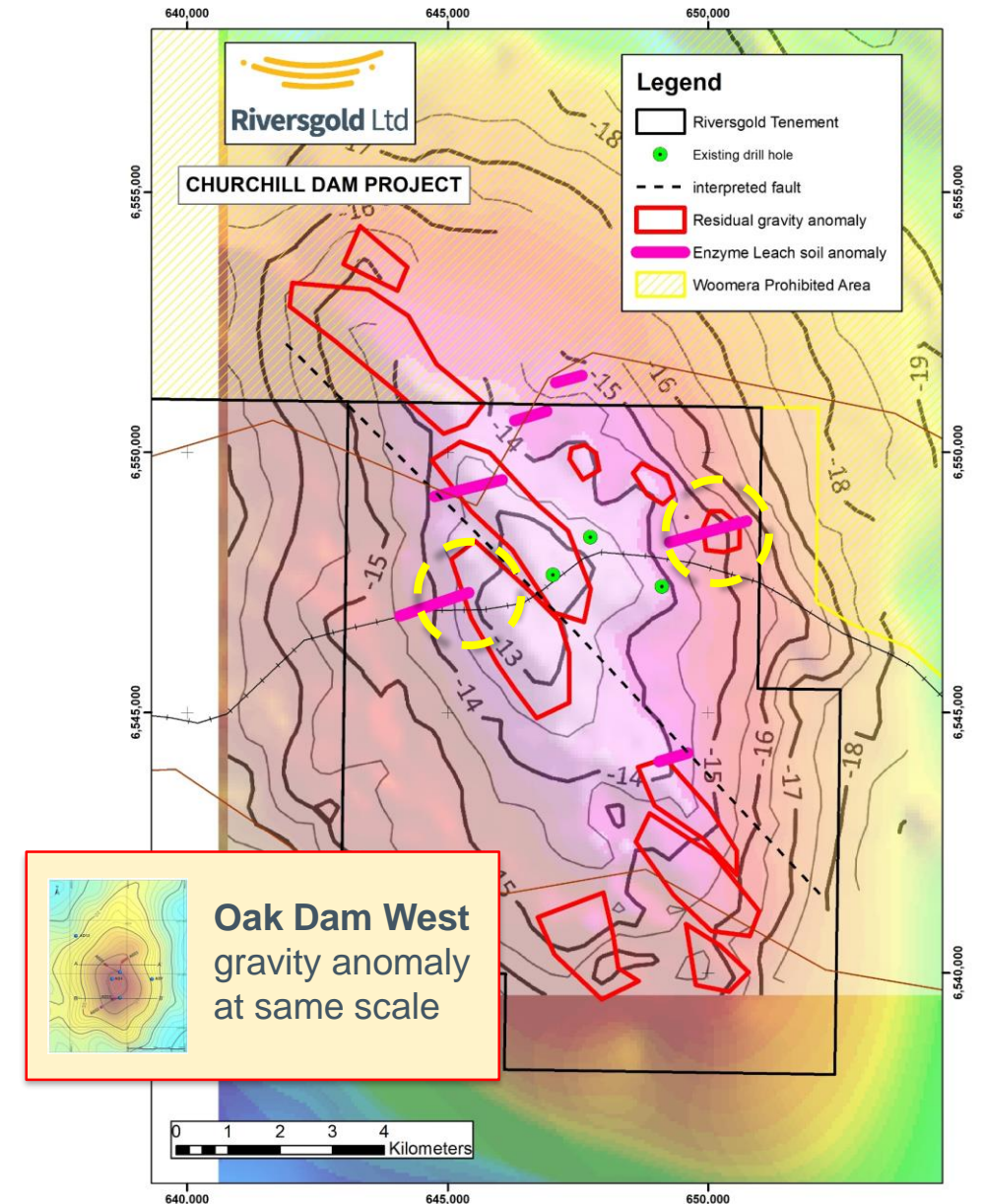
# South Australian IOCG Projects

- Looking for a **large IOCG deposit** in the **Olympic Copper-Gold Province** of South Australia, host to:
  - Olympic Dam
  - Prominent Hill
  - Carrapateena/Khamsin
- Recent “**Oak Dam West**” drilling results by BHP reinforce potential for further IOCG discoveries
- **Churchill Dam**
  - Large gravity anomaly mostly untested
  - Approvals received for diamond drilling
- **Burt Lagoon**
  - Gravity/geochem anomaly in Torrens Hinge Zone



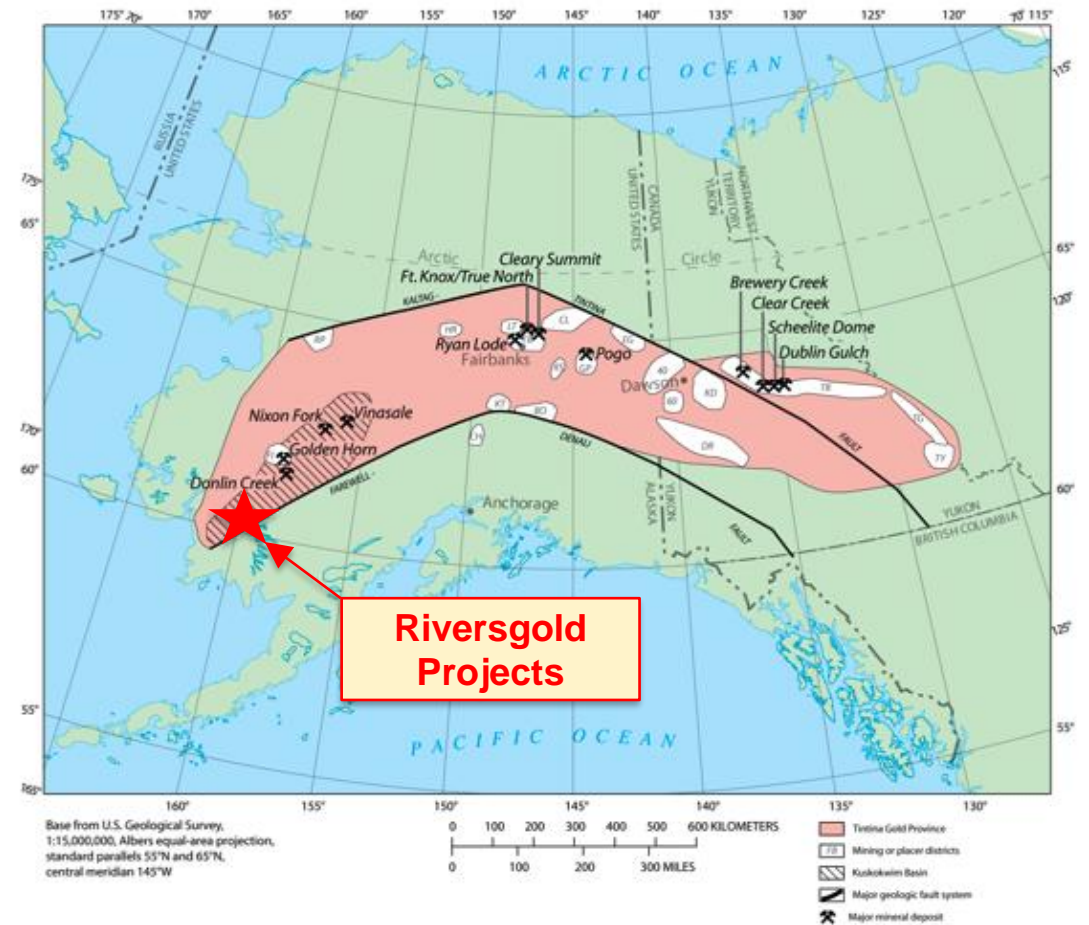
# Churchill Dam

- Large **+5mgal** Bouguer gravity anomaly
  - **similar scale to Olympic Dam**
- **Numerous residual gravity anomalies**
  - each large enough to host a Carrapateena-sized IOCG deposit
- Enzyme Leach “rabbit ear” anomalies
- Previous drilling intersected **hematite-altered Gawler Range Volcanics** with **anomalous REE’s**
- Heritage survey/permitting completed
- Refining target for drill testing in 2019

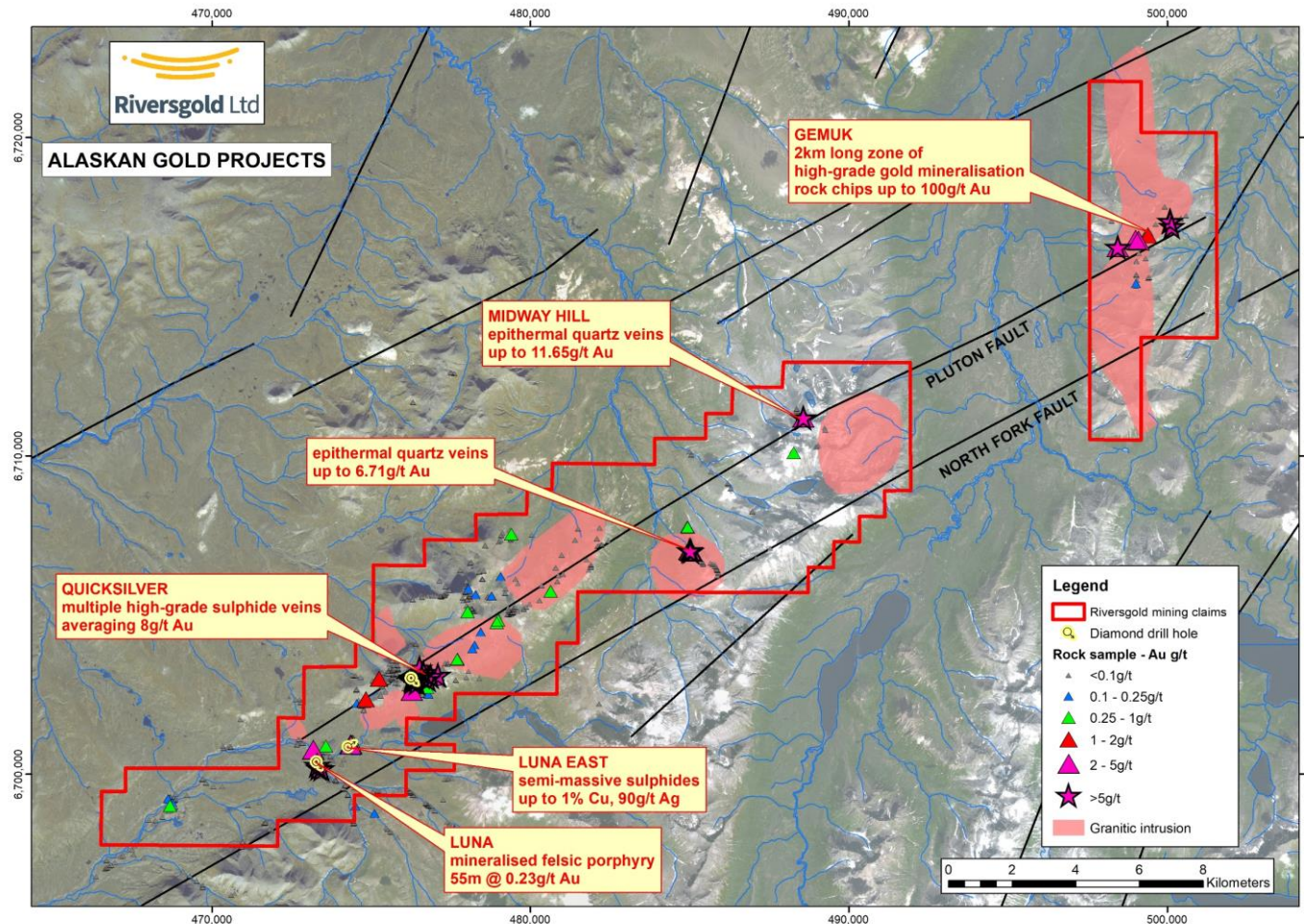


# SW Alaska Gold Projects

- Looking for a large **Intrusion-related gold (IRG)** deposit in the world-class **Tintina Gold Province** – host to multiple large Au deposits:
  - **Donlin Creek (45Moz Resource)**
  - Pogo (4.2Moz Resource, 3.8Moz produced)
  - Fort Knox/True North (7Moz produced)
  - Livengood (15.5Moz Resource)
  - Yukon deposits (7Moz discovered to date)
- **100% owned State mining claims** over several large Intrusion-Related Gold targets
- Similar geology/structural setting to the giant 45Moz **Donlin Creek** gold deposit



# SW Alaska - multiple high-grade gold occurrences



- Multiple new high-grade gold occurrences along “North Fork Fault” corridor
- Outcropping high-grade gold mineralisation at:
  - Luna
  - Quicksilver
  - Midway Hill
  - Gemuk
- Semi-massive Cu sulphides at **Luna East**
- Limited drilling to date

*\*See Appendix for ASX Announcements*



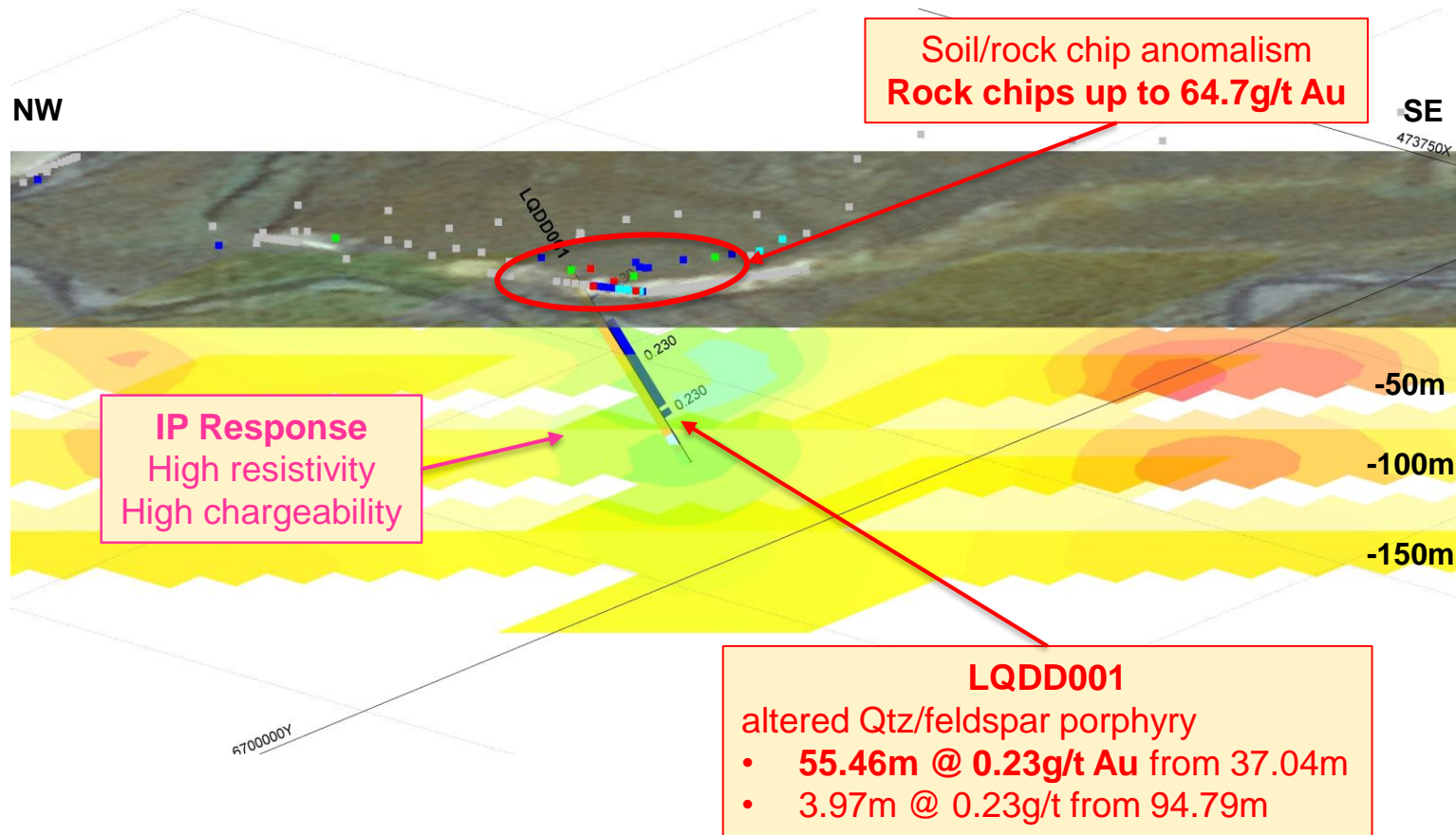
# 2018 Field Season Summary

- **Luna**
  - IP survey highlights numerous chargeability anomalies
  - **LQDD001 – 55m @ 0.23g/t Au** within felsic porphyry
- **Quicksilver**
  - Multiple outcropping arsenopyrite veins averaging **8g/t Au**
  - Large soil anomalies with gold assays up to **2.58g/t Au**
  - **LQDD003** intersects several thin massive sulphide veins
- **Midway Hill**
  - New claims staked over outcropping high-grade epithermal quartz veins up to **11.65g/t Au**
- **Gemuk Mountain**
  - 2km zone of high-grade gold mineralisation up to **100g/t Au**
  - 400m long Au-As-Sb soil anomaly with results up to **1.27g/t Au**



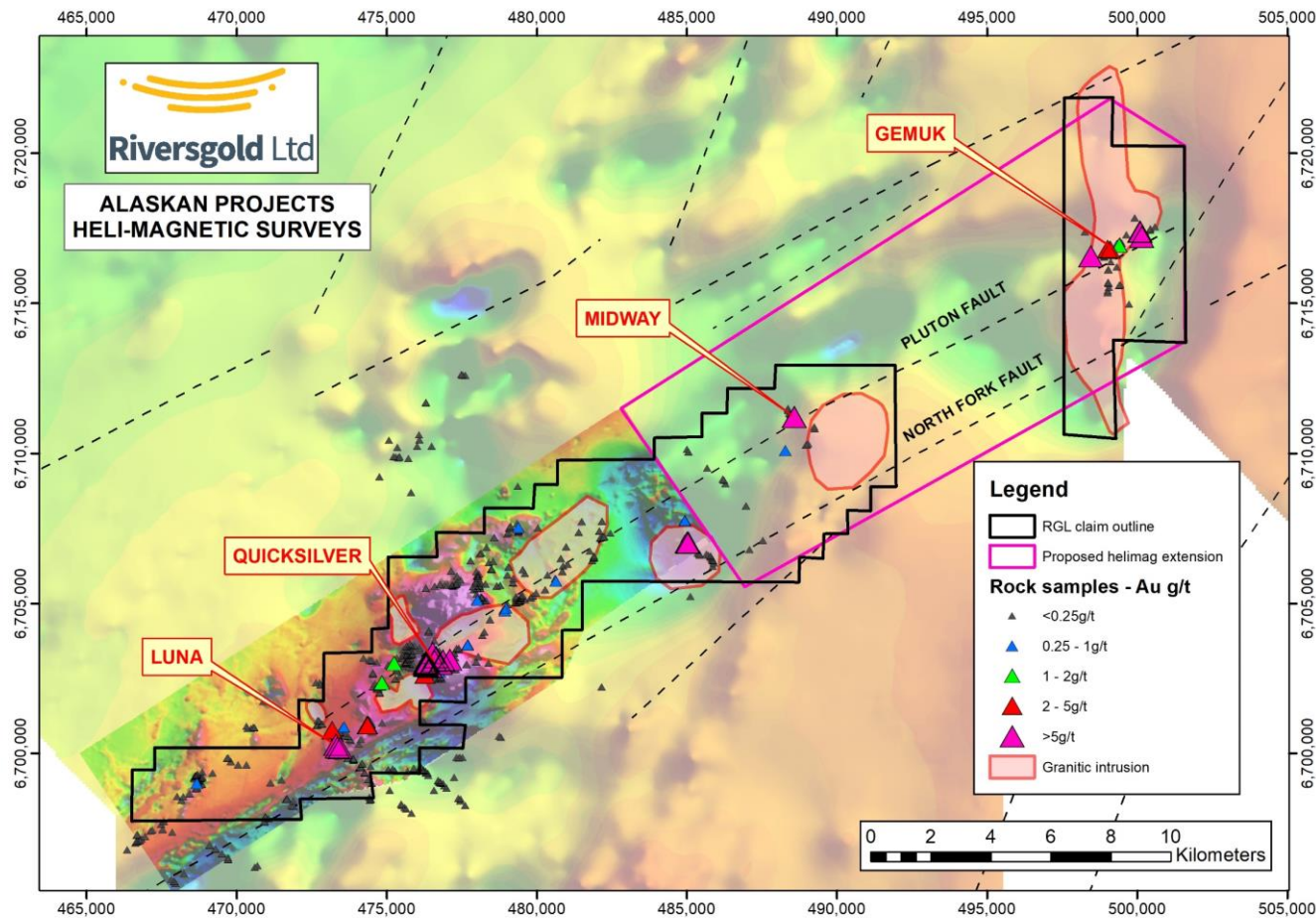
*\*See Appendix for ASX Announcements*

# First Luna drill hole intersects mineralised porphyry



\*See Appendix for ASX Announcements

# Extension of detailed helimag survey planned



- Plans to extend detailed helimag survey to cover new **Midway/Gemuk** claims
- To be flown prior to 2019 field season



# Summary

- The Company hit the ground running after listing in Oct 2017 and has advanced its exploration projects in two world-class gold provinces:
  - **Eastern Goldfields of Western Australia**
  - **Tintina Gold Province of SW Alaska, USA**
- Aims for first half of 2019:
  - Determine potential for gold mineralisation at **Farr-Jones** and **Cutler** that could be monetised in the near-term
  - Determine the potential for a large gold deposit(s) at **Queen Lapage**
  - Diamond drilling at **Churchill Dam** looking for a large, Carrapateena-sized IOCG deposit
  - Extend helimagnetic survey over the **Midway** and **Gemuk** claim blocks in **SW Alaska, USA**



*Aircore drilling on Lake Yindarlgooda, Jan 2019*



**Riversgold Ltd**

[www.riversgold.com.au](http://www.riversgold.com.au)



# Competent Person Statement

The information in this document that relates to Exploration Results is based on information compiled by Mr Allan Kelly, a Competent Person who is a Member of The Australian Institute of Geoscientists. Mr Kelly is the Managing Director and CEO of Riversgold Ltd. He is a full time employee of Riversgold Ltd and holds shares and options in the Company.

Mr Kelly has sufficient experience which is relevant to the style of mineralisation and type of deposit under consideration and to the activity which he is undertaking to qualify as a Competent Person as defined in the 2012 Edition of the 'Australasian Code for Reporting of Exploration Results, Mineral Resources and Ore Reserves'. Mr Kelly consents to the inclusion in the presentation of the matters based on his information in the form and context in which it appears.

- Information on historical results for the Australian, Alaskan and Cambodian projects, including Table 1 information, is contained in the "Independent Geologists Report" in the Riversgold Replacement Prospectus dated 11 August 2017.
- Information on historical results for the Gemuk Mountain Project , including Table 1 information, is contained in the ASX Release dated 1 February 2018.
- Information on the Cutler Project , including Table 1 information, is contained in the ASX Releases dated 26 February 2018 and 8 June 2018;
- Information on the Farr-Jones Project , including Table 1 information, is contained in the ASX Releases dated 2 July, 13 August, 11 September, 17 October, 23 October 26 November 2018 and 16 January 2019;
- Information on results from the Yilgani Project, including Table 1 information, is included in the ASX releases dated 20 November 2017, 7 February 2018, 28 March 2018 and 26 April 2018;
- Information on results from the 2018 Alaskan fieldwork programmes, including Table 1 information, is included in the ASX Releases dated 6 July, 20 July, 17 August, 23 August, 28 August, 26 September, 27 September, 8 October, 11 October and 12 October 2018.

The Company confirms that it is not aware of any new information or data that materially affects the information in the original market announcements, and that the form and context in which the Competent Persons findings are presented have not been materially modified from the original market announcements.