



MICRONS TO MARGINS FULLY FUNDED TO PRODUCTION

Investor Presentation February 2019

DISCLAIMER

This presentation (the "Presentation") has been prepared by Graphex Mining Limited ("Graphex"). No party other than Graphex has authorised or caused the issue of this document, or takes responsibility for, or makes any statements, representations or undertakings in this Presentation. This Presentation does not constitute an offer, invitation or recommendation to subscribe for or purchase any securities and neither this Presentation nor anything contained in it shall form the basis of any contract or commitment.

This Presentation contains summary information about Graphex and its activities, which is current as at the date of this Presentation. The information in this Presentation is of a general nature and does not purport to be complete nor does it contain all the information which a prospective investor may require in evaluating a possible investment in Graphex that would be required in a prospectus or product disclosure statement prepared in accordance with the requirements of the Corporations Act 2001 (Cth). This Presentation should be read in conjunction with Graphex's other disclosures and announcements lodged with the ASX, which are available at www.asx.com.au.

This Presentation is not a prospectus, product disclosure statement or other offering document under Australian law (and will not be lodged with the Australian Securities and Investment Commission) or any other law.

This presentation includes certain "forward-looking statements". Forward-looking statements and forward-looking information are frequently characterised by words such as "plan," "expect," "project," "intend," "believe," "anticipate," "estimate" and other similar words, or statements that certain events or conditions "may", "will" or "could" occur. All statements other than statements of historical fact included in this presentation are forward-looking statements or constitute forward-looking information. Although the Company believes the expectations expressed in such statements and information are based on reasonable assumptions, there can be no assurance that such information or statements will prove to be accurate and actual results and future events could differ materially from those anticipated in such information. Important factors that could cause actual results to differ materially from those in forward-looking statements include the market price of graphite, exploitation and exploration successes, capital and operating costs, changes in project parameters as plans continue to be evaluated, continued availability of capital and financing and general economic, market or business conditions, as well as those factors disclosed in the Company's filed documents. Accordingly, readers should not place undue reliance on "forward looking information". There can be no assurance that a transaction for offtake and finance will be concluded, or that development of the Chilalo Graphite Project will proceed as planned or that the resources at Chilalo can be economically exploited.

This Presentation has been prepared in good faith, but no representation or warranty, express or implied, is made as to the fairness, accuracy, completeness, correctness, reliability or adequacy of any statements, estimates, opinions or other information, or to the reasonableness of any assumption or other statement, contained in the Presentation (any of which may change without notice). To the maximum extent permitted by law, Graphex and its professional advisers and their related bodies corporate, affiliates and each of their respective directors, officers, partners, employees, advisers and agents

and any other person involved in the preparation of the Presentation disclaim all liability and responsibility (including, without limitation, any liability arising from fault or negligence) for any direct or indirect loss or damage which may arise or be suffered through use of or reliance on anything contained in, or omitted from, this Presentation.

Mineral Resources

The information in this Presentation that relates to in situ Mineral Resources for the Chilalo Project was announced on 20 September 2018. Graphex confirms that it is not aware of any new information or data that materially affects the information included in the announcement of 20 September 2018 and that all material assumptions and technical parameters underpinning the estimates in the announcement of 20 September 2018 continue to apply and have not materially changed.

Ore Reserves

The information in this Presentation that relates to the Ore Reserve at the Chilalo Project was announced on 20 September 2018. Graphex confirms that it is not aware of any new information or data that materially affects the information included in the announcement of 20 September 2018 and that all material assumptions and technical parameters underpinning the estimates in the announcement of 20 September 2018 continue to apply and have not materially changed.

Forecast financial information

The forecast financial information (and the production target on which such forecast financial information is based) in this Presentation was announced on 20 September 2018. All material assumptions underpinning the forecast financial information (and the production target on which such forecast financial information is based) in the announcement of 20 September 2018 continue to apply and have not materially changed.

Exploration Target

The information in this Presentation that relates to the Exploration Target was announced by IMX Resources Limited (now Indiana Resources Limited) on 2 September 2015). Graphex confirms that it is not aware of any new information or data that materially affects the information included in the announcement of 2 September 2015. The potential quantity and grade of an exploration target is conceptual in nature, there has been insufficient exploration to determine a mineral resource and there is no certainty that further exploration work will result in the determination of mineral resources or that any associated production target will be realised.

POISED FOR PRODUCTION

Funded for graphite delivery



US\$80M FUNDING PACKAGE

expected to fully fund mine construction to production¹

UNRIVALLED GRAPHITE MARGIN

larger flake sizes attract premium prices

MARKET INSIGHT

price premium provides competitive cashflow advantage

PROGRESSING BFS

with draw-down of interim loan notes underway

NPV US\$349M & 131% IRR

fully permitted Chilalo delivers exceptional economics



¹ Subject to agreed conditions per ASX announcement dated 29 October 2018 and slide 5

HIGH-GRADE LARGE FLAKE RESOURCE

Chilalo Project

FULLY PERMITTED

with Mining Licence and Environmental Approvals

16.9Mt GRAPHITE @ 10.2% TGC

incl Ore Reserves 5.3Mt @ 10.9% TGC

100-350Mt @ 3-11% TGC¹

exploration target tonnage - resource upside

DRILLING COMPLETED

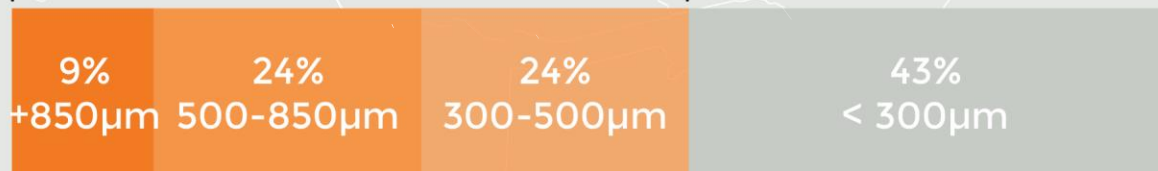
expected resource upgrade² and extension of mine life

PROGRESSING BFS

significant condition to unlock senior funding

GPX PRODUCT FLAKE SIZE

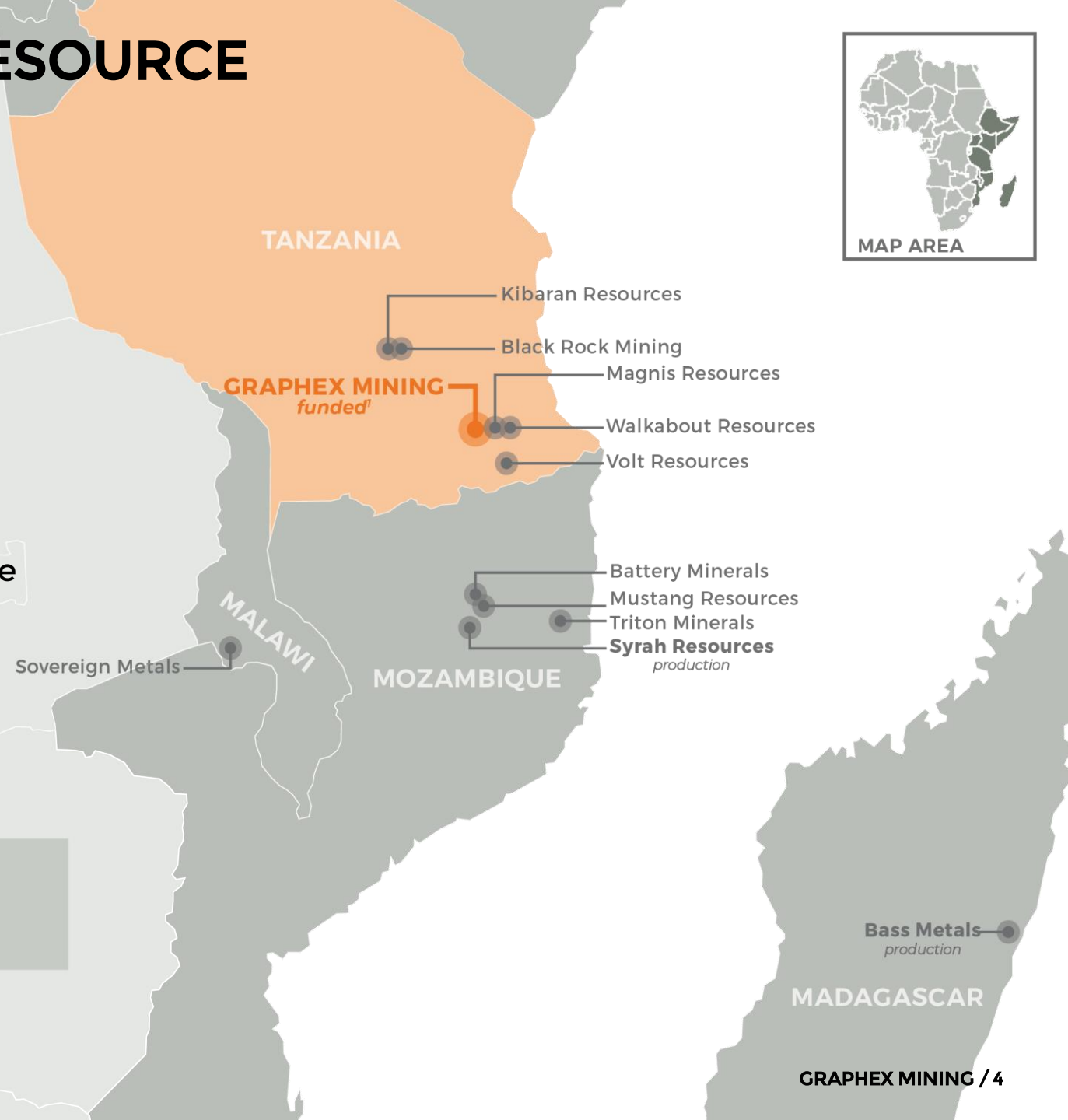
57% >300 µm



FLAKE SIZE PRICE PREMIUM

¹ IMX Resources ASX Announcement dated 2 September 2015.

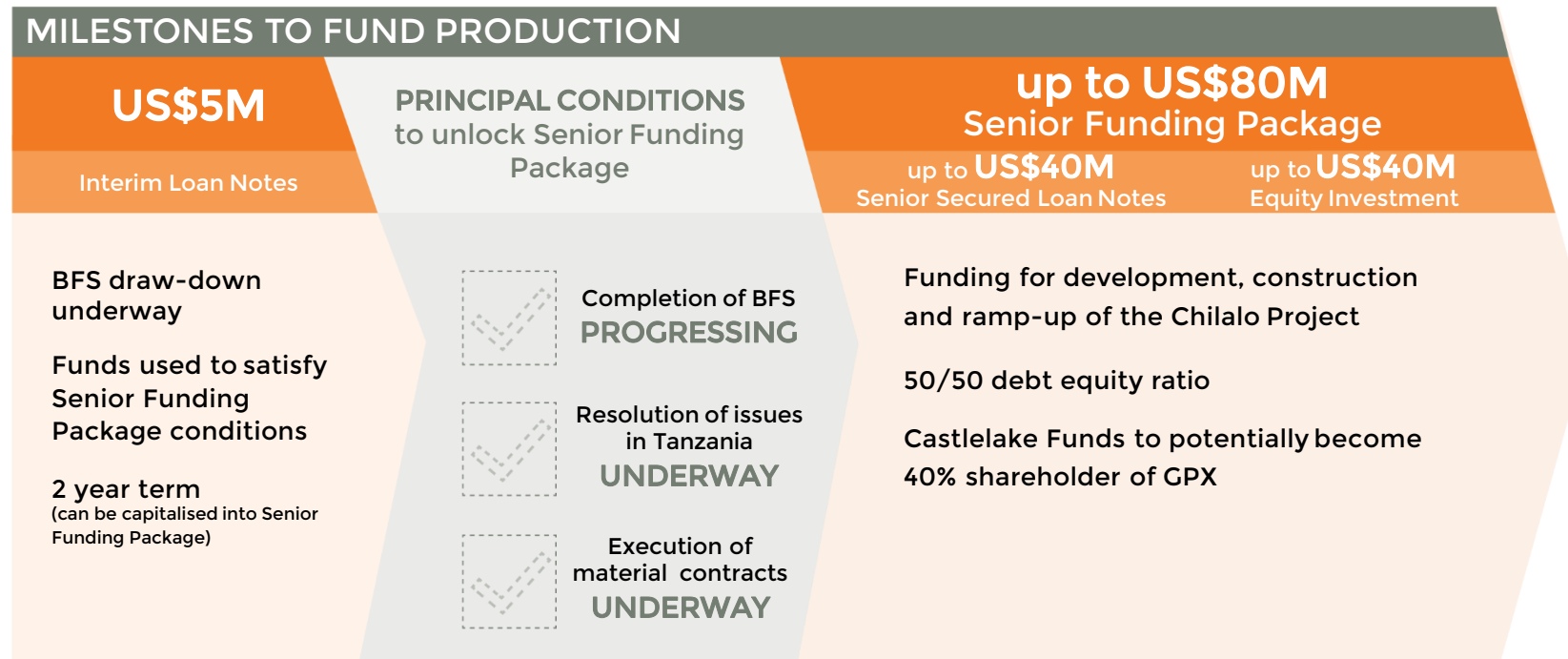
² Expected resource upgrade March 2019 and extension of mine life



GLOBAL INVESTMENT FIRM STAKES GRAPHEX POSITION

US\$80M is an independent validation of

- Chilalo Project quality
- Market opportunity for large flake product
- Potential for resolution in Tanzania

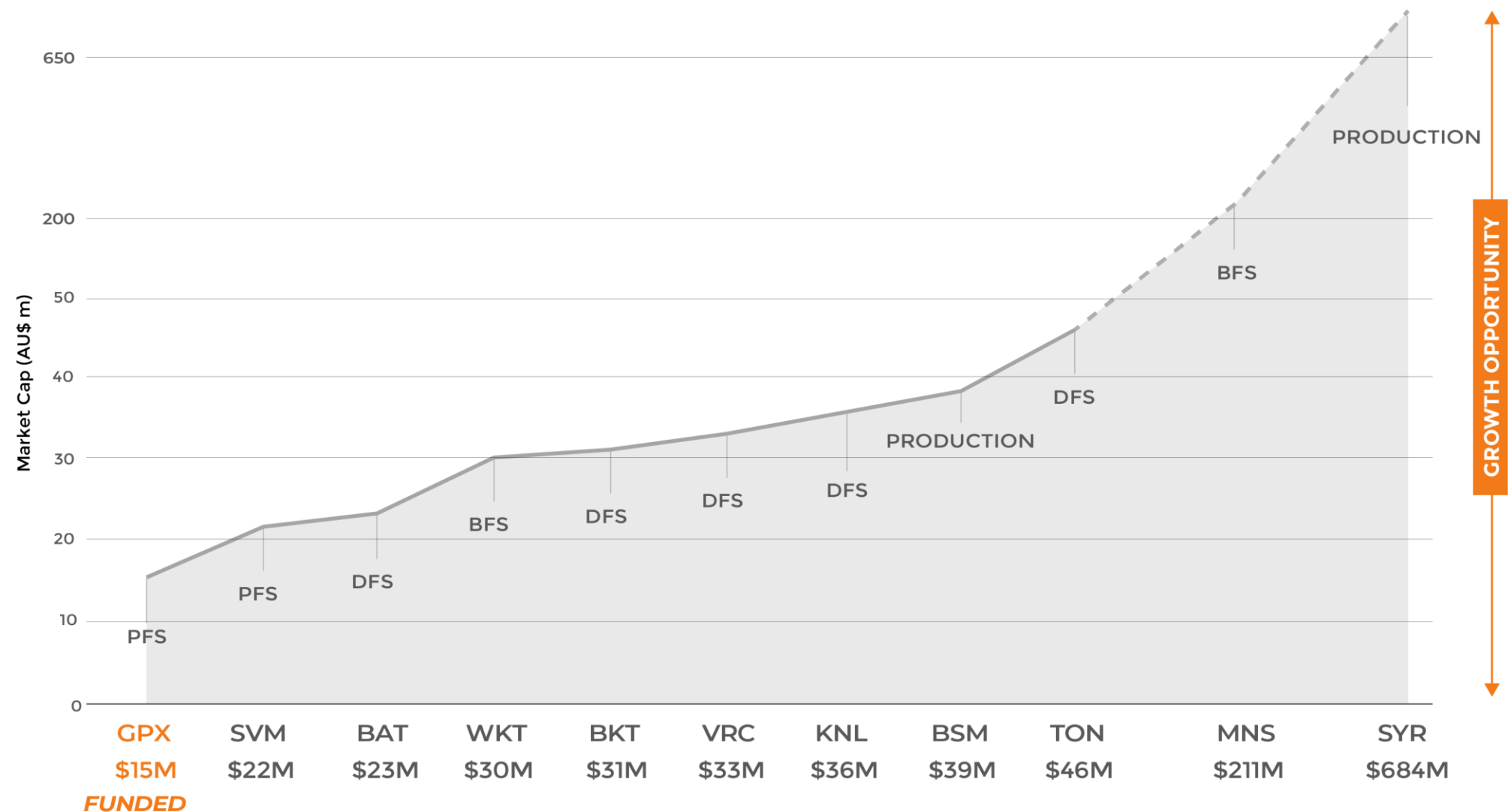


Global Investment Firm with
US\$13.7B under management

Specialising in discovering and pursuing
complex small and mid sized asset based
opportunities.

VALUATION ANOMALY

GPX trading at substantial discount vs. (unfunded) peer group



CHILALO DEVELOPMENT PLAN

PFS highlights compelling economics



STAGE 1 PRODUCTION

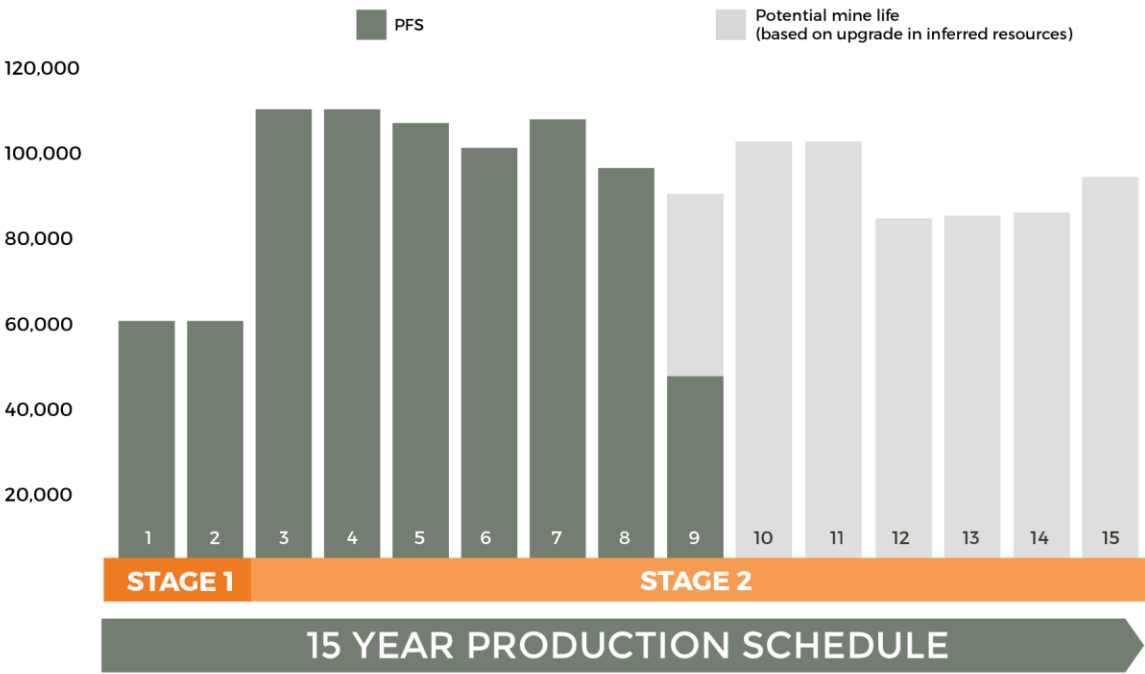
58,000 TONNES
(YRS 1-2)

STAGE 2 PRODUCTION

100,000 TONNES
(YRS 3+)

Item	Measure	PFS
Life of mine	Years	8.5
Average annual production	tpa	93,000
Plant feed rate	tpa	883,000
Average head grade	% TGC	10.6%
Average annual EBITDA	US\$m	112
Basket sales price FOB Mtwara	US\$/t	1,777
Operating cost per tonne of product	US\$/t	500
Operating margin	US\$/t	1,277
Stage 1 capital cost	US\$m	43.6
Stage 2 capital cost	US\$m	32.5
Post-tax NPV (10% discount rate)	US\$m	349
Post-tax internal rate of return (IRR)	%	131
Post-tax payback period	Yrs	0.84

GRAPHEX PRODUCTION SCHEDULE
GRAPHITE (TONNES)



CONVERTING MICRONS TO MARGINS

Valuable product portfolio

US\$1,777/t¹

Basket sale price

US \$1,277/t

Operating Margin

57% OF GPX PRODUCT

achieves premium price

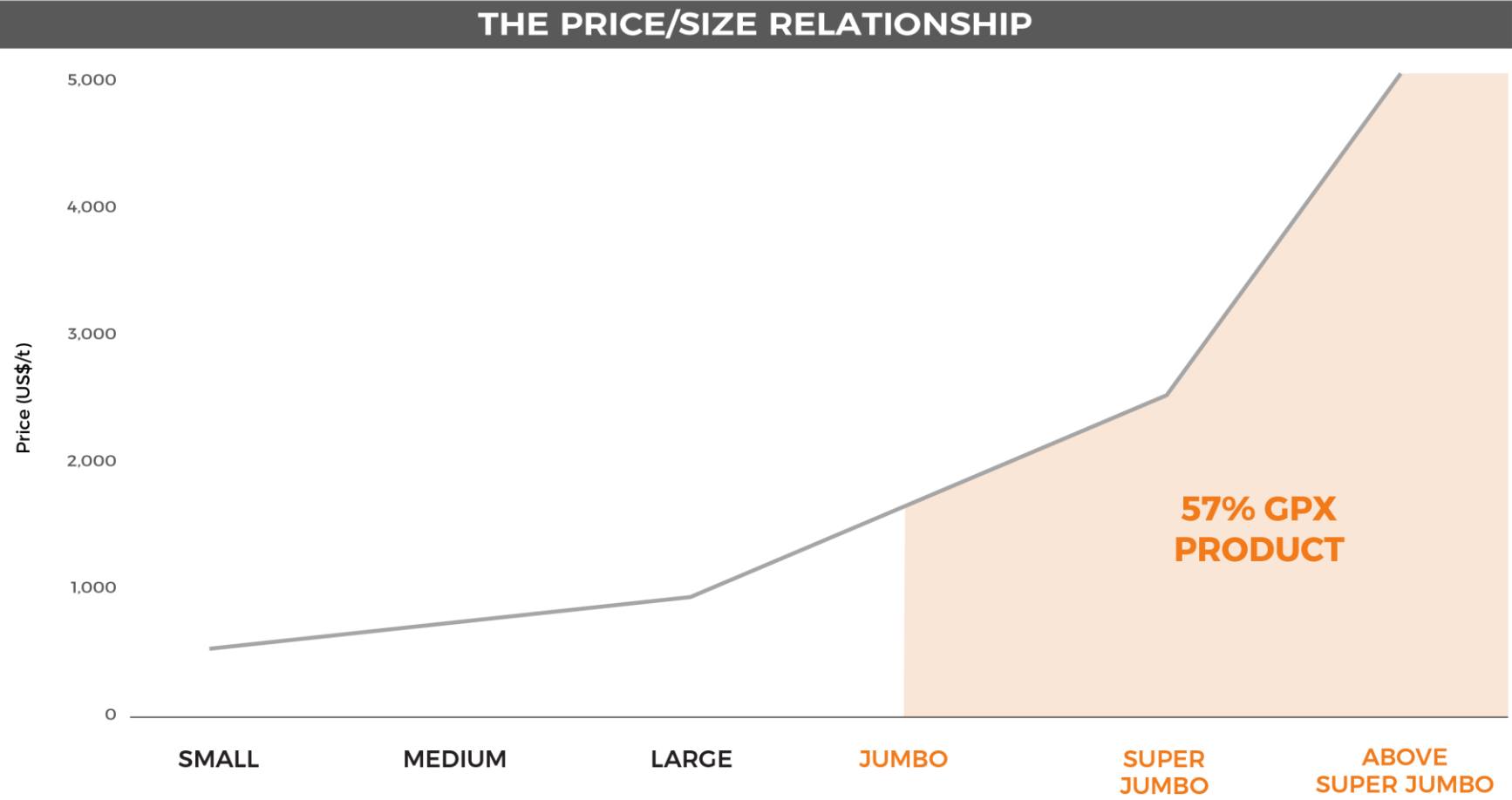
PRICING SOURCE¹

Lower of BMI and Chinese market sources

GPX BASKET PRICE						
Flake Size	Microns	Mass Dist. %	Grade TGC %	Price (US\$/t)	Basket Sale Price (US\$/t)	
Above Super Jumbo	> 850	9	93.4	\$5,150	\$437	PRICE PREMIUM FLAKE SIZE
Super Jumbo	500 – 850	24	90.3	\$2,540	\$620	
Jumbo	300 – 500	24	88.6	\$1,757	\$427	
Large	180 – 300	9	98.7	\$974	\$83	EXPANDABLE
Medium	150 – 180	5	98.8	\$779	\$39	LITHIUM ION BATTERIES & EXPANDABLE
Small	< 150	29	97.4	\$583	\$171	
WEIGHTED AVERAGE BASKET SALE PRICE (FOB)					US\$1,777	

BANKING ON FLAKE SIZE

Graphex targets larger flake size

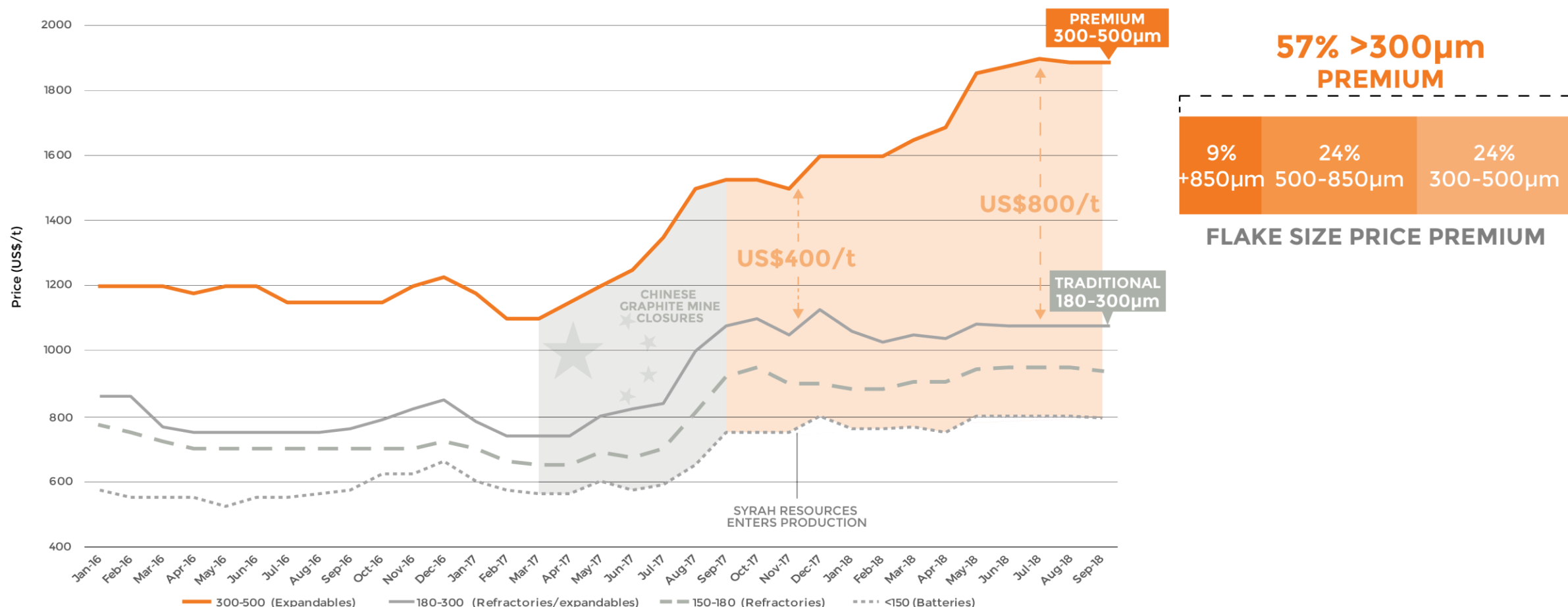


1 Flake price is based on information obtained from CN Docking and reputable Chinese trading houses, with the most conservative estimates used

MINE THE GAP

Growing price inequality between premium and traditional markets

(EXPANDABLE) (REFRACTORY)

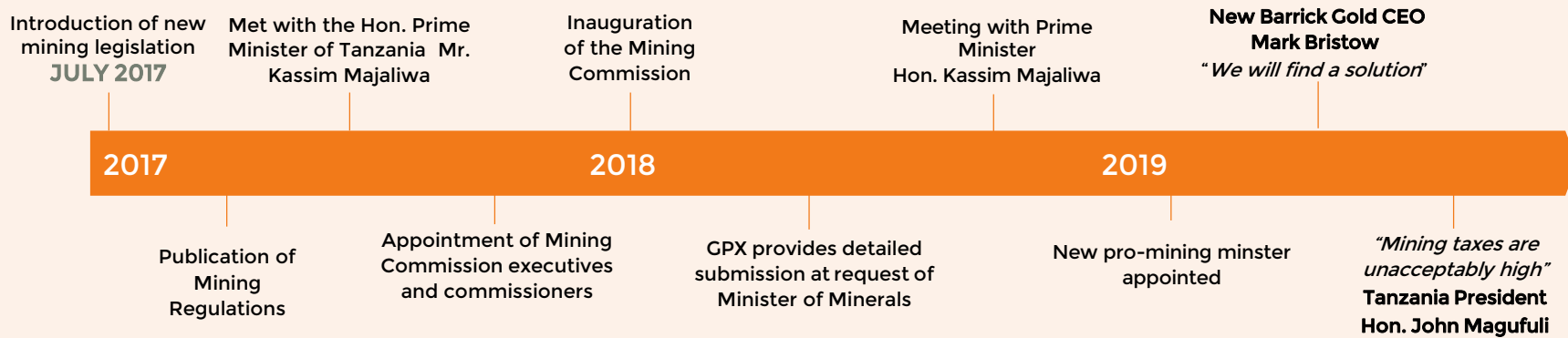


Source: Benchmark Mineral Intelligence

COMMITTED TO TANZANIA

MOMENTUM BUILDING TOWARDS RESOLUTION

TIMELINE OF TANZANIAN GOVERNMENT ENGAGEMENT



STRONG CAPABILITY TO DELIVER IN AFRICA

PHIL HOSKINS
7yrs GPX/IMX

GRANT DAVEY
+10yrs Anglo Gold Ashanti & Cradle Resources

STUART MCKENZIE
+12yrs GPX/IMX & Anvil Mining

HEAVENLIGHT KAVISHE
Country Manager
(Tanzanian Government liaison)



Mining contributes 4.8% to GDP with the government
AIMING TO GROW TO 10% BY 2025

FLAME RETARDANT REVOLUTION

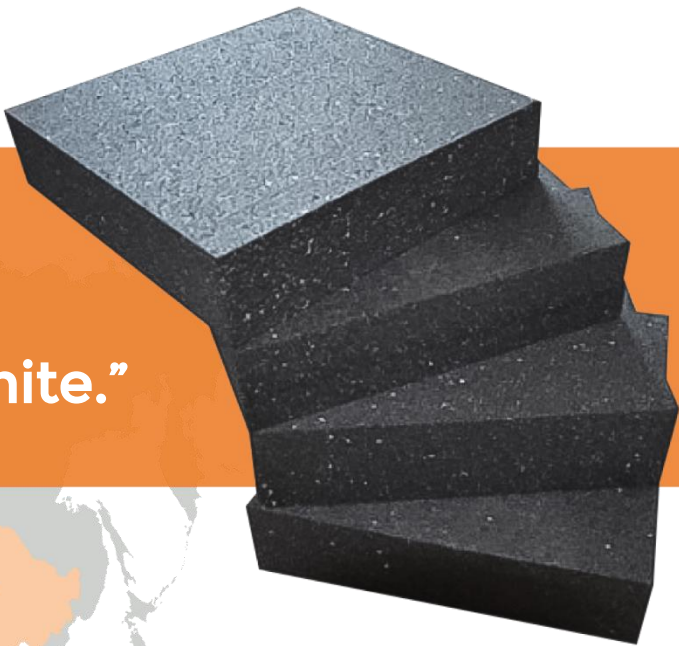
China stepping stone to the global market



CHINA DRIVES GLOBAL FLAME RETARDANT BUILDING (FRBM) MATERIAL INDUSTRY

“China needs 40Mtpa of FRBM’s, which will contain 5% expandable graphite.”

Mr Jiang Yang, Group Vice President - China National Building Materials (FRBM)



UK GRENFELL TOWER
FIRE REGULATORY
RECOMMENDATIONS

CHINA FRBM
MANDATED
BUILDING CODE

UAE SKYSCRAPER
FIRE REGULATORY
RECOMMENDATIONS

AUSTRALIA INDUSTRY
BEST PRACTICE FOLLOWING
GRENFELL (UK)

**GPX HAS THE RIGHT
PRODUCT FOR THE
RIGHT MARKET**

CHINA GRAPHITE SUPPLY UNDER THREAT

Issues facing graphite production

China has historically produced **+70% OF THE WORLD'S GRAPHITE**

Chinese production of graphite is under threat due to **CHINESE GOVERNMENT ENVIRONMENTAL CRACKDOWN** causing mine closures and threatening an industry already impacted by diminished large flake graphite reserves

Structural change will see **EAST AFRICA REPLACING CHINA** as the world's leading supplier of graphite

BUILDING THE PIPELINE

China offtake interest

5 SIGNED
statements of
sales intent

80,000 TONNES
per annum of
Chilalo Graphite

Offtake interest exceeds STAGE 1
PRODUCTION target (>58,000 tonnes)

HEILONGJIANG PROVINCE
20,000t/pa

LIAONING PROVINCE
trade only
40,000t/pa

SHANDONG PROVINCE
20,000t/pa

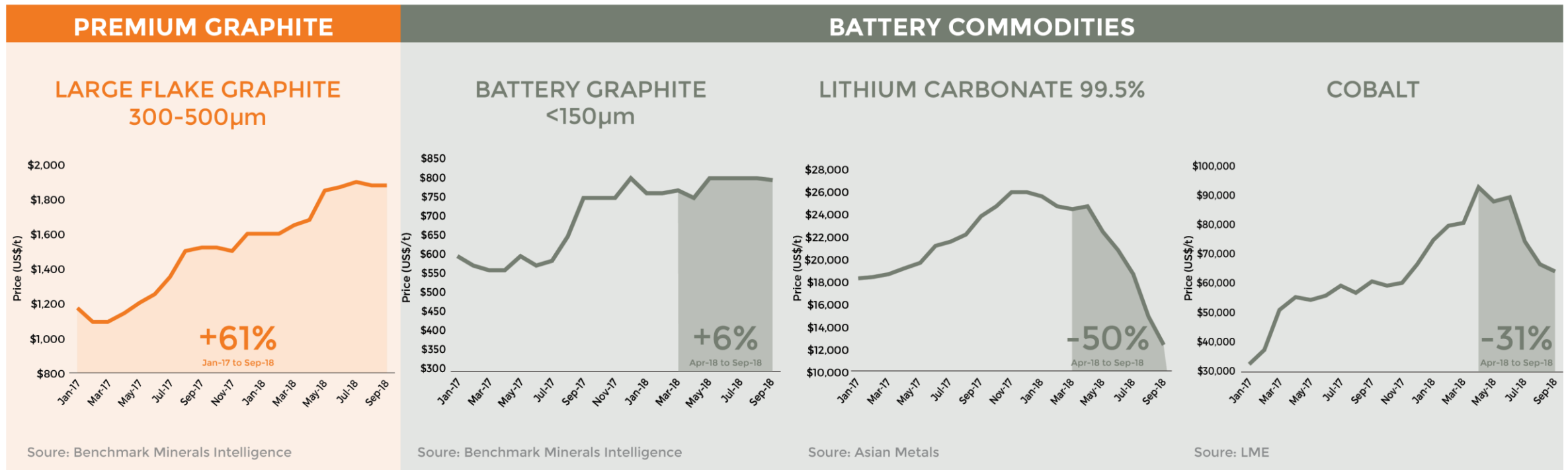
Building offtake relationships in China

PHIL HOSKINS

5yrs in-country experience (Regular in-China
interaction with offtake partners)

THE UNDERSTATED OVERACHIEVER

Surging large flake graphite price obscured by EV story



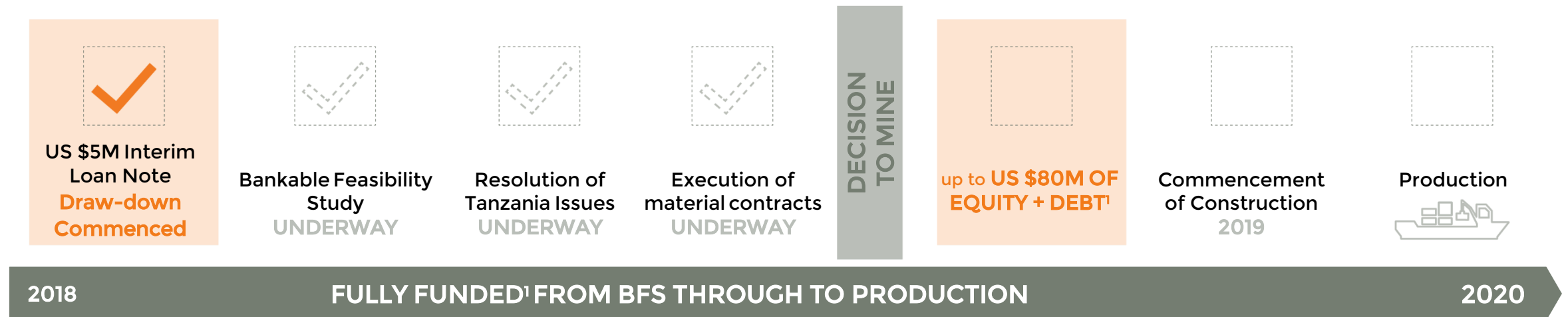
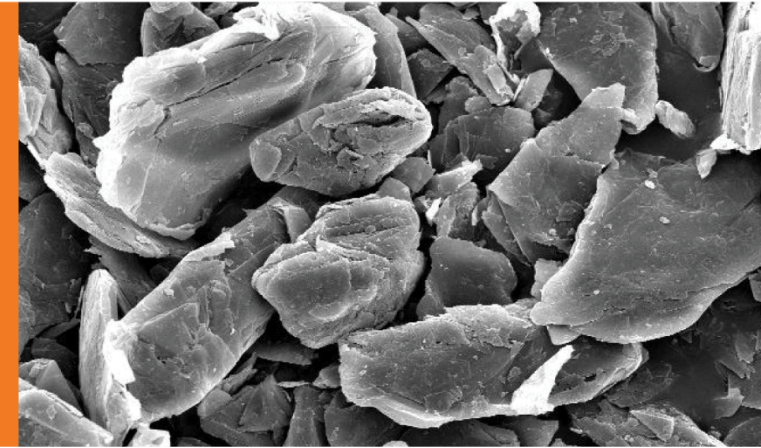
Large flake graphite prices have risen over 60% since early 2017

FUNDING CONDITIONS UNLOCKING PATHWAY TO PRODUCTION

Strategy targeting 2020 production

Management attention now concentrated on resolution of financing conditions ahead of targeted production by 2020

US\$32.5m STAGE 2 mine expansion to be funded from STAGE 1 cash flows



¹ Subject to agreed conditions per ASX announcement dated 29 October 18 and slide 5

EXPANDING OUR HORIZONS

investing in east African Graphite

TRANSFORMATIVE FUNDING ARRANGEMENT

transparent, fully funded pathway to cashflow
with experienced resource investors

>500µm MICRON - COMPETITIVE OFFTAKE ADVANTAGE

highest margin producer, product tailored for
expandable graphite partners

CENTURY OF GRAPHITE

two once-in-a-generation demand events

GRAPHITE: A PERFECT STORM

permanent supply disruption plus demand
megatrend increasing prices and creating
supply opportunities

SIGNIFICANT THIRD-PARTY VALIDATION OF PROJECT, PRODUCT AND STRATEGY



Suite 4, Level 1, 2 Richardson Street
West Perth WA 6005 Australia

Telephone: +61 8 9200 4960
Facsimile: +61 8 9200 4961
Email: info@graphexmining.com.au



CORPORATE OVERVIEW

CAPITAL STRUCTURE

Market Cap	A\$15.6M
Shares on Issue	86.6M

MAJOR SHAREHOLDERS

Capital Drilling Limited	6.88%
J P Morgan Nominees Australia Limited	6.37%
MMG Exploration Holdings	4.09%
BNP Paribas Nominees	3.61%

BOARD & MANAGEMENT

Stephen Dennis	Non-executive Chairman
Grant Davey	Non-executive Director
Phil Hoskins	Managing Director
Warren King	Project Manager

JORC TABLE

DOMAIN	CLASSIFICATION	TONNES (MT)	TGC%	CONTAINED GRAPHTE (KT)
High-grade zone	Probable Reserve	5.3	10.9	576
Total ore reserves	Probable Reserve	5.3	10.9	576
High-grade zone	Indicated	5.2	11.9	622
High-grade zone	Inferred	11.7	9.4	1,100
Total high-grade resource	Indicated and Inferred	16.9	10.2	1,722
Low-grade zone	Inferred	36.6	3.5	1,265
Total resource	Indicated and Inferred	53.5	5.6	2,987