



6 February 2019

ASX ANNOUNCEMENT

ASX: ASN

Anson Commences Roadworks to Access Skyline Drill Pad

Highlights:

- Roadworks commenced to access Skyline Unit 1 for re-entry
- Drilling program permitted to include 2 oil well re-entries:
 - Skyline Unit 1
 - Long Canyon No. 2
- Progression to a JORC Resource remains on track

Anson Resources Limited (Anson) has commenced the roadworks to access the drilling site for the re-entry drilling of Skyline Unit 1 at its Paradox Lithium Project.

The roadworks involves ramping down off an existing oil well pad, see Photo 1, and then upgrading an access road to enable the drilling rig and associated drilling equipment to be mobilised to site.



Photo 1: Ramping down off an existing oil well pad at Anson's Paradox Lithium Project.

The access road after dropping off the pad only requires minor earthworks to be suitable for use by heavy machinery such as drilling rigs, see Photo 2 below.



Photo 2: Roadworks in progress to upgrade access to the Skyline Unit 1 well.

The location of the wells permitted in the current drilling campaign are highlighted in Figure 1.

The data expected to be obtained from the drilling will be used in the estimation of a JORC Resource, the timing of which remains on track.

The brine obtained during the drilling program will be assayed and used for ongoing metallurgical test work.

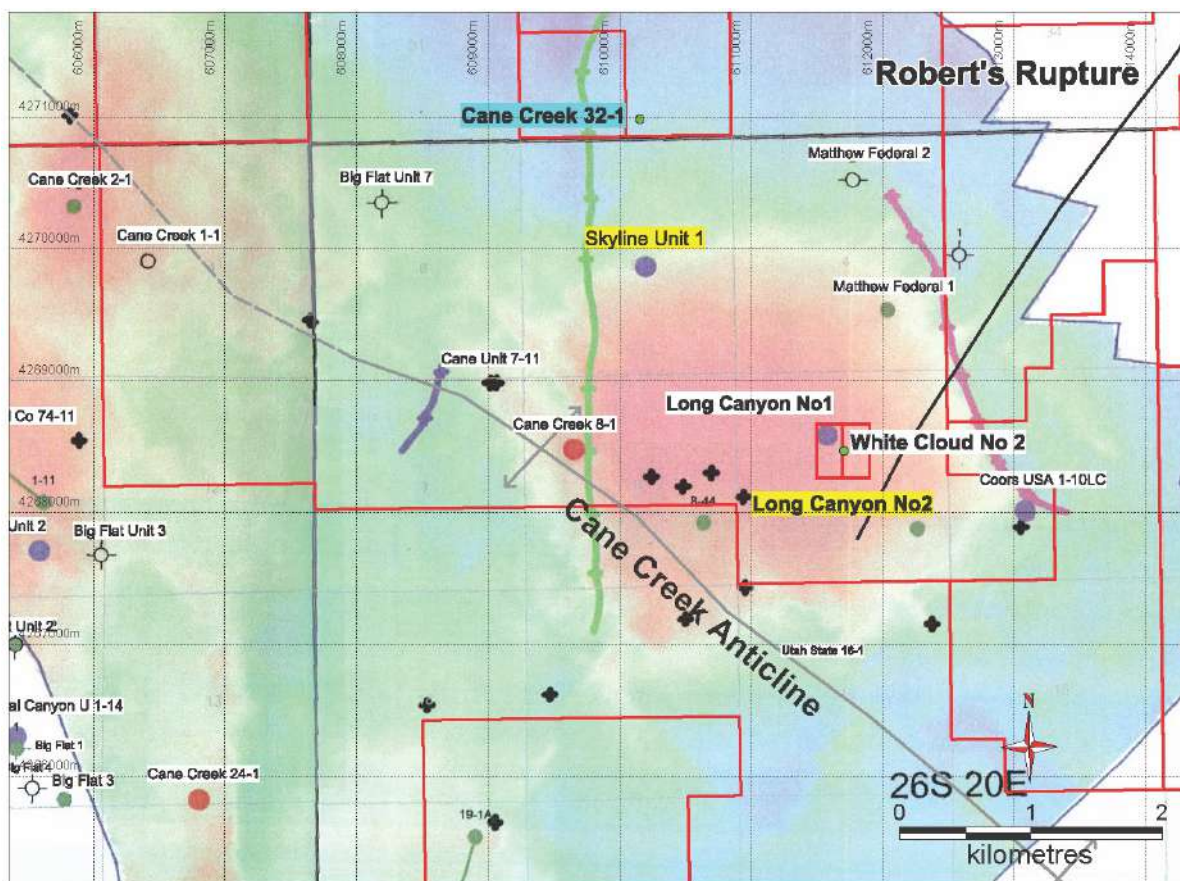


Figure 1: Map showing the location of the planned oil well re-entries.

ENDS

For further information please contact:

Bruce Richardson
Executive Chairman and CEO

E: info@ansonresources.com

Ph: +61 8 9226 0299

www.ansonresources.com

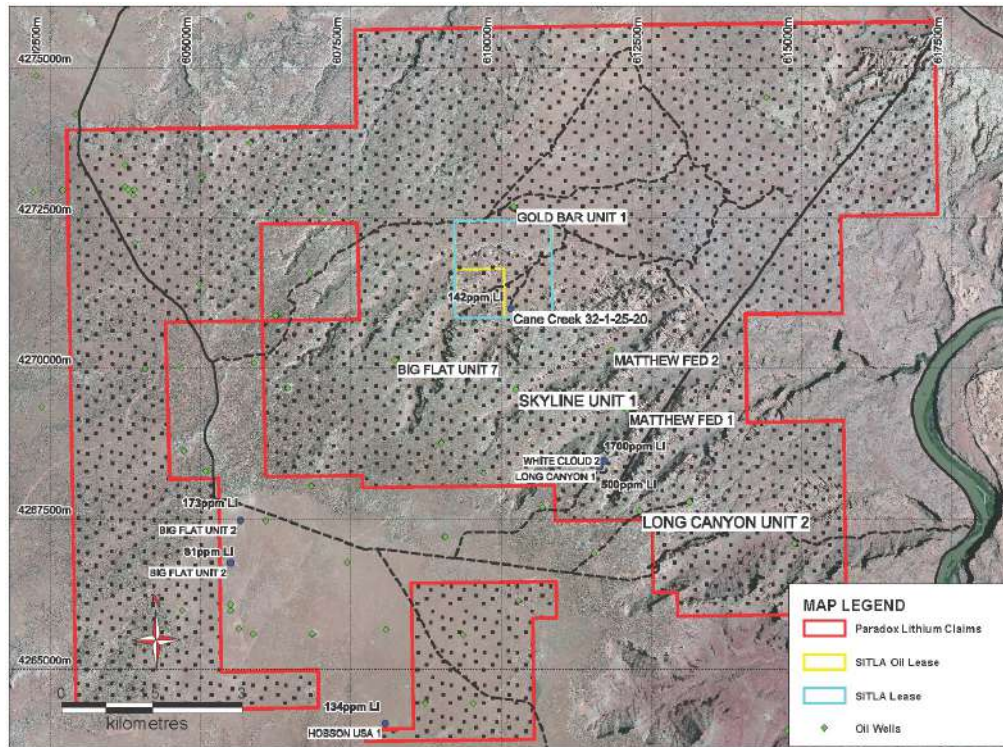
Follow us on Twitter @anson_ir

Forward Looking Statements: Statements regarding plans with respect to Anson's mineral projects are forward looking statements. There can be no assurance that Anson's plans for development of its projects will proceed as expected and there can be no assurance that Anson will be able to confirm the presence of mineral deposits, that mineralisation may prove to be economic or that a project will be developed.

Competent Person's Statement: The information in this announcement that relates to exploration results, geology and metallurgical data is based on information compiled and/or reviewed by Mr Greg Knox, a member in good standing of the Australasian Institute of Mining and Metallurgy. Mr Knox is a geologist who has sufficient experience which is relevant to the style of mineralisation under consideration and to the activity being undertaken to qualify as a "Competent Person", as defined in the 2012 Edition of the Australasian Code for Reporting of Exploration Results, Mineral Resources and Ore Reserves. Mr Knox has reviewed and validated the metallurgical data produced by Lilac Solutions and consents to the inclusion in this announcement of this information in the form and context in which it appears. Mr Knox is a director of Anson and a consultant to Anson.

About the Utah Lithium Project

Anson is targeting lithium rich brines in the deepest part of the Paradox Basin in close proximity to Moab, Utah. Lithium values of up to 1,700ppm have historically been recorded in close proximity to Anson's claim area. Anson's claims are shown below:



The location of Anson's claims within the Paradox Basin is shown below:

