



# **Knocking on the Door to Discovery in Western Victoria**

*(and Queensland, and Tasmania)*

**RIU Explorer's Conference 2019**



## Disclaimer

This presentation contains only an overview of Stavely Minerals Limited (“Stavely” or the “Company”) and its activities and operations. The contents of this presentation, including matters relating to the geology and exploration potential of the Company’s projects, may rely on various assumptions and subjective interpretations which it is not possible to detail in this presentation and which have not been subject to any independent verification.

This presentation contains a number of forward-looking statements. Known and unknown risks and uncertainties, and factors outside of the Company’s control, may cause the actual results, performance and achievements of the Company to differ materially from those expressed or implied in this presentation.

To the maximum extent permitted by law, Stavely does not warrant the accuracy, currency or completeness of the information in this presentation, nor the future performance of the Company, and will not be responsible for any loss or damage arising from the use of the information.

The information contained in this presentation is not a substitute for detailed investigation or analysis of any particular issue. Current and potential investors should seek independent advice before making any investment decision in regard to the Company or its activities.



# STAVELY MINERALS

**STAVELY**  
MINERALS

ASX Code – SVY

Share Price - \$0.31

Cash (31/12/18) - \$2.3M\*

Shares on Issue – 156M

Market Cap - \$48.4M

Management & Staff ~38% equity

*\*Excludes Titeline Drilling agreement and Victorian Gov't co-funding*

## Directors

Chris Cairns

*Executive Chairman*

Jennifer Murphy

*Technical Director*

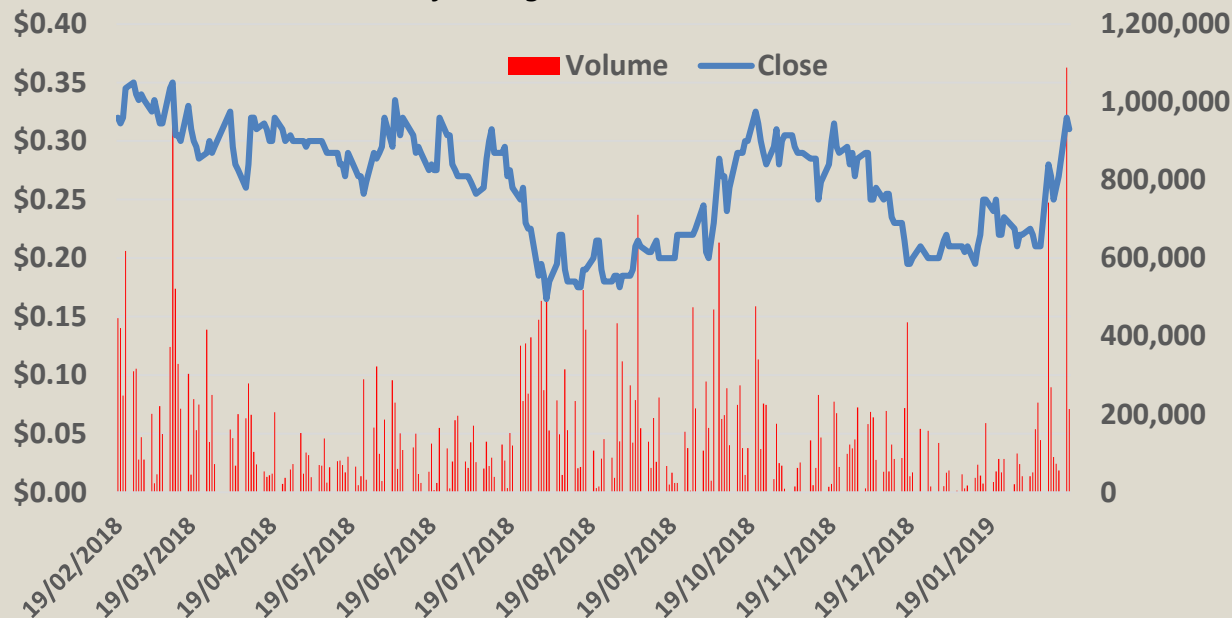
Peter Ironside

*Non-executive Director*

Amanda Sparks

*Non-executive Director*

*& Company Secretary*



*\*\$2m share subscription agreement with Titeline Drilling Pty Ltd announced to the ASX on 7 October 2014*



# TAKE AWAY MESSAGES



1. Stavely provides good value for investors – currently ~80% of expenditure is 'in the ground'
2. Stavely is well in the hunt for a copper-gold porphyry at Thursday's Gossan
3. These porphyries are amongst the largest gold deposits in the world
4. Drill-ready gold targets near Ravenswood in Queensland
5. Recently granted priority application rights over the main Mathinna Goldfield deposits (NE Tasmania) – had produced ~300,000 ounces at a grade of 26g/t gold up until 1932. Very little modern exploration since.

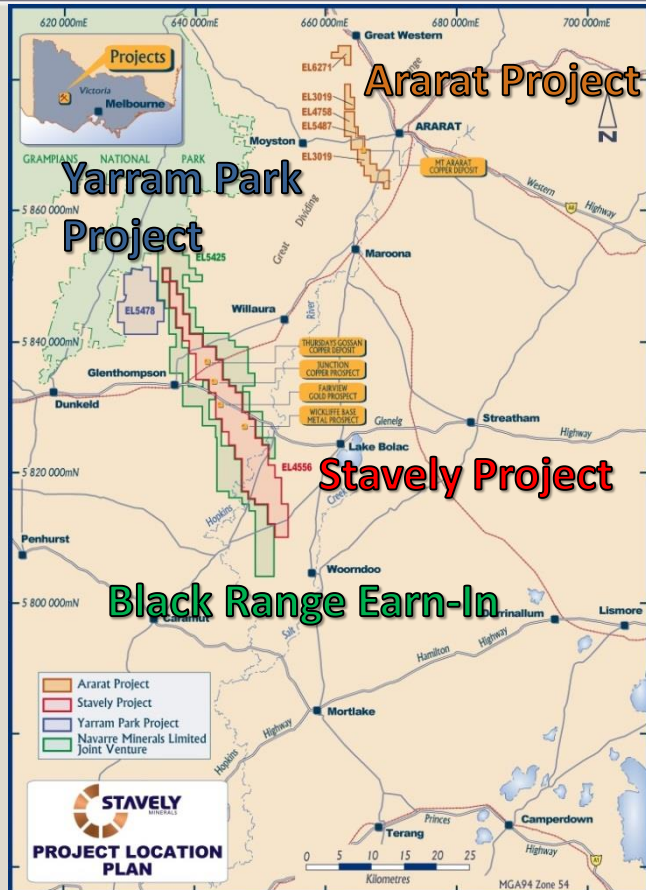




# PROJECTS



# VICTORIAN PROJECT LOCATIONS

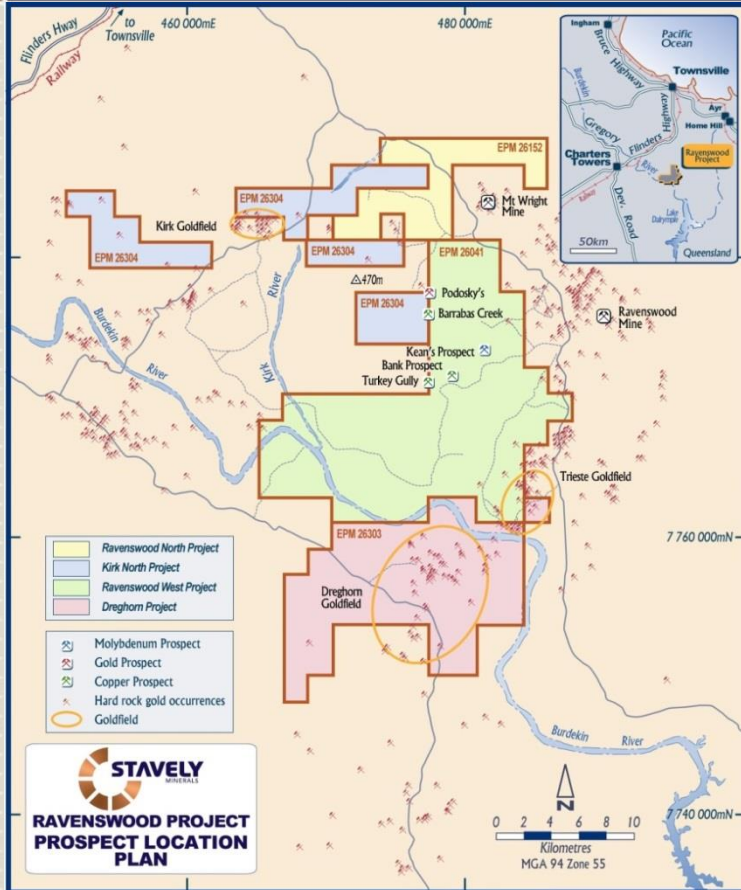


The Ararat Project is prospective for VMS base metals-gold and 'Stawell-style' gold mineralisation.

The Stavely, Yarram Park and Black Range Projects are prospective for ancient porphyry copper-gold and VMS base metals-gold mineralisation.



# QUEENSLAND PROJECT LOCATION



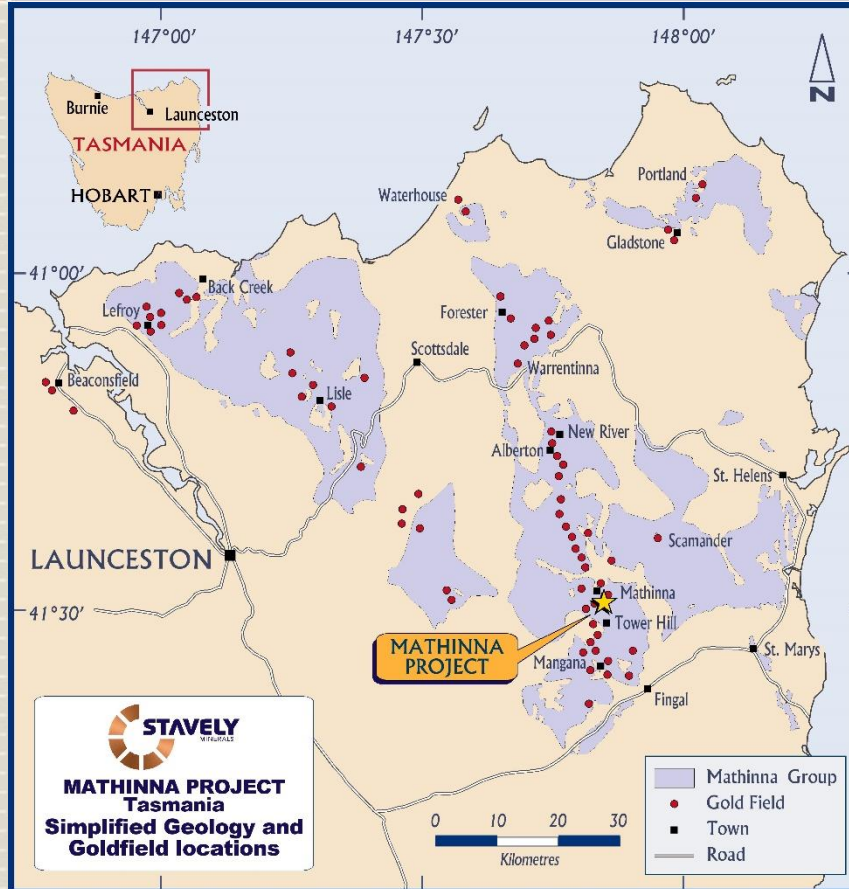
The Ravenswood Project is prospective for:

- porphyry copper-moly-gold,
- quartz-sulphide vein-hosted gold
- breccia-hosted gold mineralisation
- epithermal gold
- VMS copper-gold

2 drill-ready targets to be tested in March 2019



# TASMANIA PROJECT LOCATION



The Mathinna Project is prospective for:

- quartz-sulphide vein-hosted gold

Produced ~300,000 ounces of gold at an average grade of 26g/t gold\*

\*see ASX announcement 26 November 2018, available from [www.stavely.com.au](http://www.stavely.com.au)



At the **Ararat Project**, hosted in a Besshi-style VMS:

- Inferred Mineral Resources of **1.3Mt at 2.0% copper, 0.5 g/t gold, 0.4% zinc and 6 g/t silver** for 30kt of contained copper

At the **Stavely Project** hosted in a secondary chalcocite-enriched blanket:

- Inferred Mineral Resources of **28Mt at 0.4% copper** for 110kt of contained copper (gold and silver not estimated)

<sup>1</sup> reported in compliance with JORC 2012, see ASX announcement 8 September 2015, subsequent Annual Reports and available from [www.stavely.com.au](http://www.stavely.com.au)



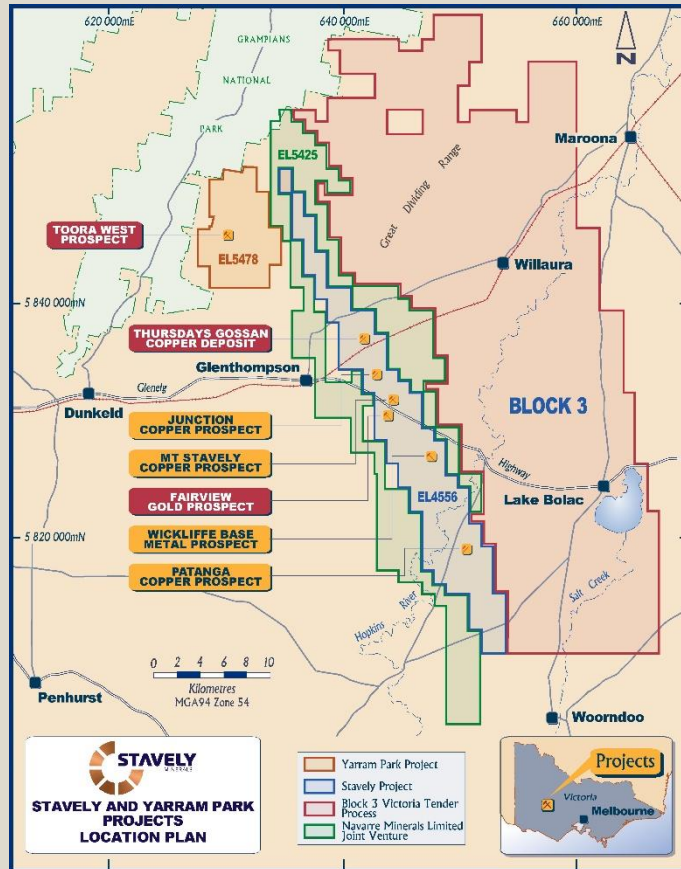


# **PORPHYRY DISCOVERY OPPORTUNITIES:**

# **THURSDAY'S GOSSAN, MOUNT STAVELY AND OTHERS**



# STAVELY VOLCANIC BELT



**Stavely has the largest and most strategic tenement holding in the belt**

- Thursday's Gossan porphyry
- Toora West porphyry prospect
- Junction porphyry
- Mount Stavely porphyry
- Fairview Gold prospect
- Wickliffe VMS prospect
- Patanga copper prospect

**Just awarded the right to apply for Block 3**



# THURSDAY'S GOSSAN PORPHYRY

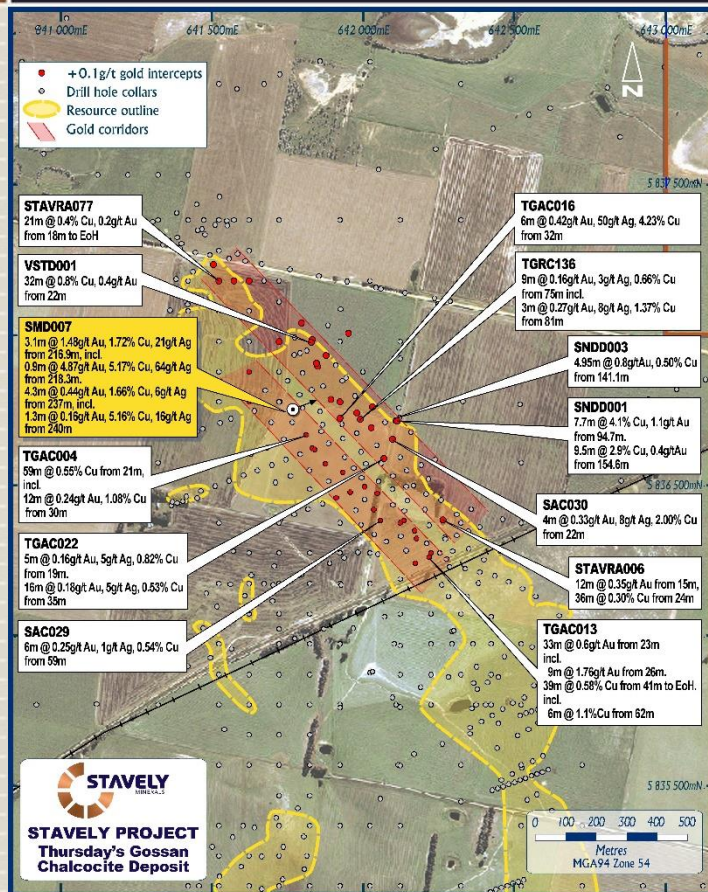


## Thursday's Gossan Chalcocite Blanket

Inferred Mineral Resources  
of **28Mt at 0.4% copper** for  
110kt of contained copper



# THURSDAY'S GOSSAN PORPHYRY

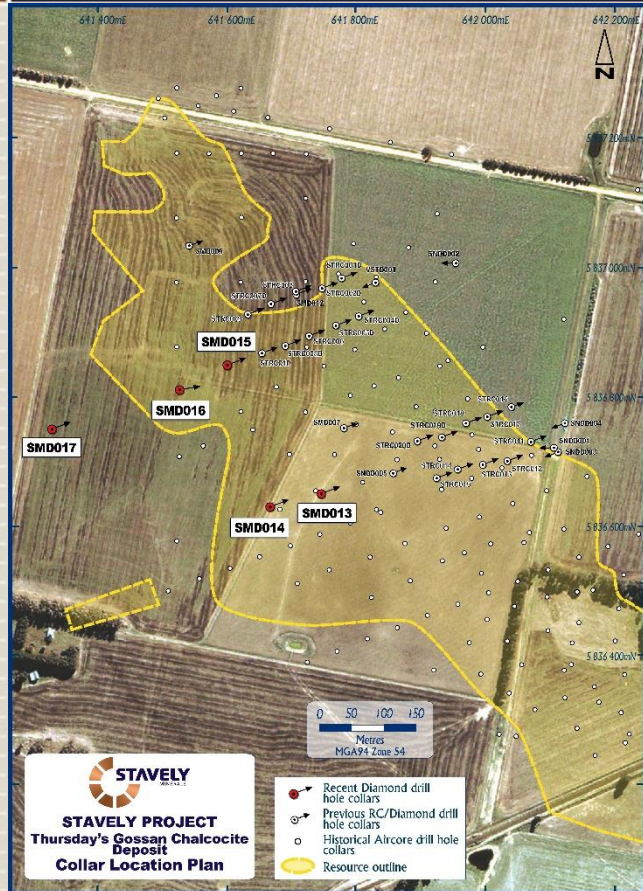


## This Time Last Year...

- Drilling had focussed on two parallel copper-gold mineralised trends at the northern end of the chalcocite blanket



# THURSDAY'S GOSSAN PORPHYRY

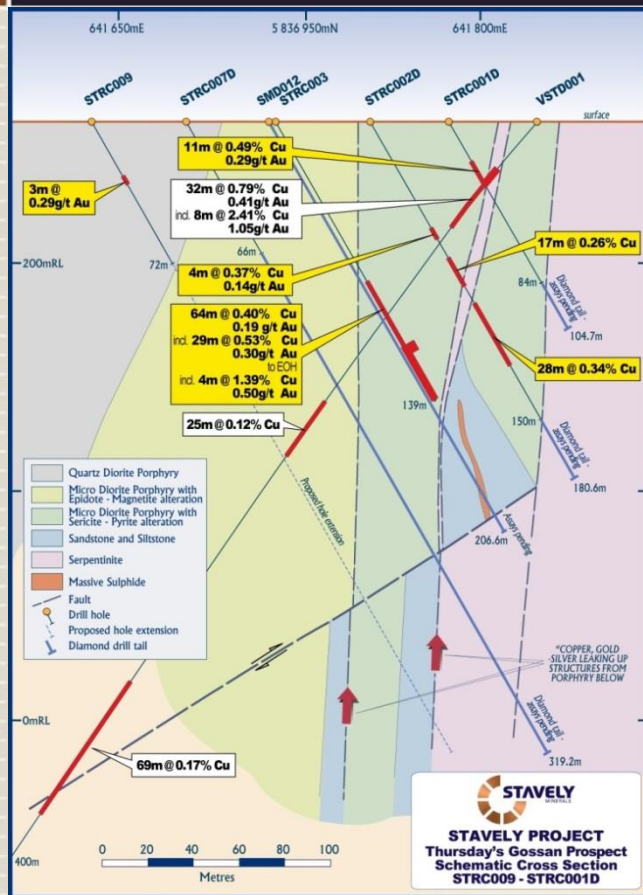


## This Time Last Year...

- Drilling had focussed on two parallel copper-gold mineralised trends at the northern end of the chalcocite blanket
- 4 x fences of 5 RC drill holes
  - Many required diamond drill 'tails'



# THURSDAY'S GOSSAN PORPHYRY



## Thursday's Gossan RC Drilling (north section)

Shallow RC drill results:

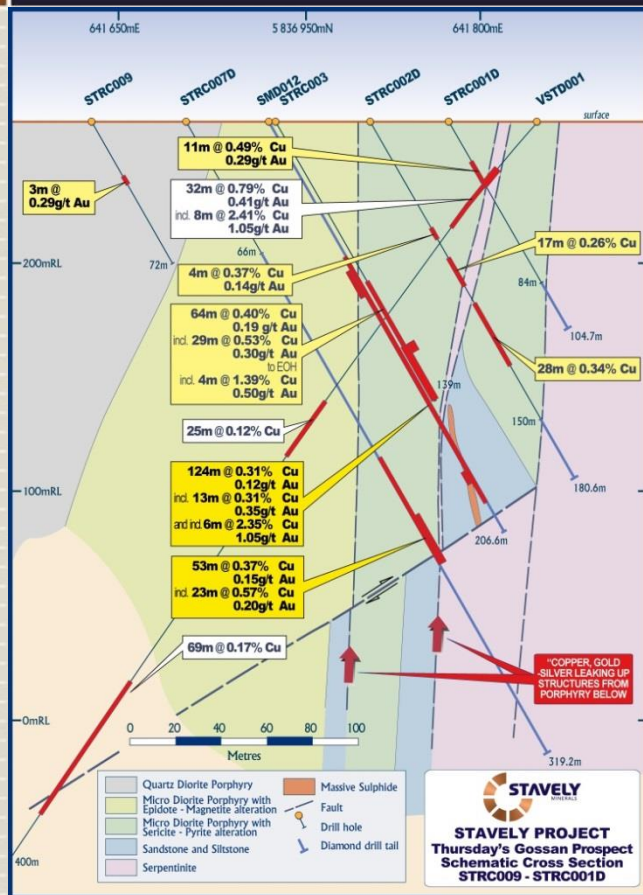
- **64m at 0.40% copper and 0.19g/t gold, including**
  - **29m at 0.53% copper and 0.3g/t gold to end of hole**
- **11m at 0.49% copper and 0.29g/t gold, and**

A number of RC drill holes stopped in grade.

see ASX announcements on 03/07/2017, 23/08/2017 and 05/09/2017 and available from [www.stavely.com.au](http://www.stavely.com.au)



# THURSDAY'S GOSSAN PORPHYRY



## Thursday's Gossan Diamond Tails (north section)

RC drill holes continued / twinned with diamond drill 'tails'. Diamond drill results:

- 124m at 0.31% copper and 0.12g/t gold, and
- 53m at 0.37% copper and 0.15g/t gold, including
  - 23m at 0.57% copper and 0.20g/t gold

see ASX announcement 23/08/2017 and available from [www.stavely.com.au](http://www.stavely.com.au)



# THURSDAY'S GOSSAN PORPHYRY



Additional diamond drill results:

- 314m at 0.11% copper
- 283m at 0.16% copper
- 194m at 0.16% copper
- 85m at 0.35% copper and 0.18g/t gold
- 124m at 0.31% copper and 0.12g/t gold
- 92m at 0.34% copper and 0.12g/t gold, incl
  - 30m at 0.50% copper and 0.22g/t gold

These broad intercepts are NOT from the potassic core of this porphyry – we have yet to drill into that zone.

**When we do, we expect better copper grades and MUCH better gold grades.**

see ASX announcements 05/09/2017, 18/12/2018 & 29/05/2018 and available from [www.stavely.com.au](http://www.stavely.com.au)



**Porphyry 'M' veins and high-  
sulphidation veins**  
**(now we are close, very close)**



# THURSDAY'S GOSSAN PORPHYRY



**Magnetite veins intercepted in SMD015 could be far more important as a proximal indicator to mineralisation**



+120m intercept of classic porphyry 'M' veins:

- Typical of **gold-rich porphyries**
- Veins in this photo are similar to the E-1A 'M' veins at Cadia Ridgeway



# THURSDAY'S GOSSAN PORPHYRY



**Magnetite veins intercepted in SMD015 are important as a proximal indicator to mineralisation**

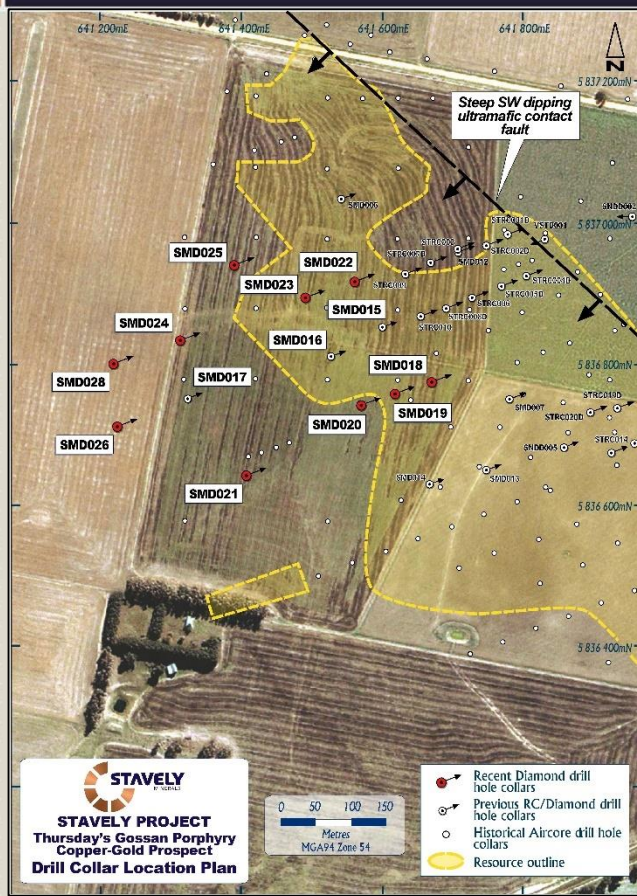
The veins in this photo are similar to the Cadia Ridgeway E-1B 'M' veins



see ASX announcement 12/01/2018 and available from [www.stavely.com.au](http://www.stavely.com.au)



# THURSDAY'S GOSSAN PORPHYRY



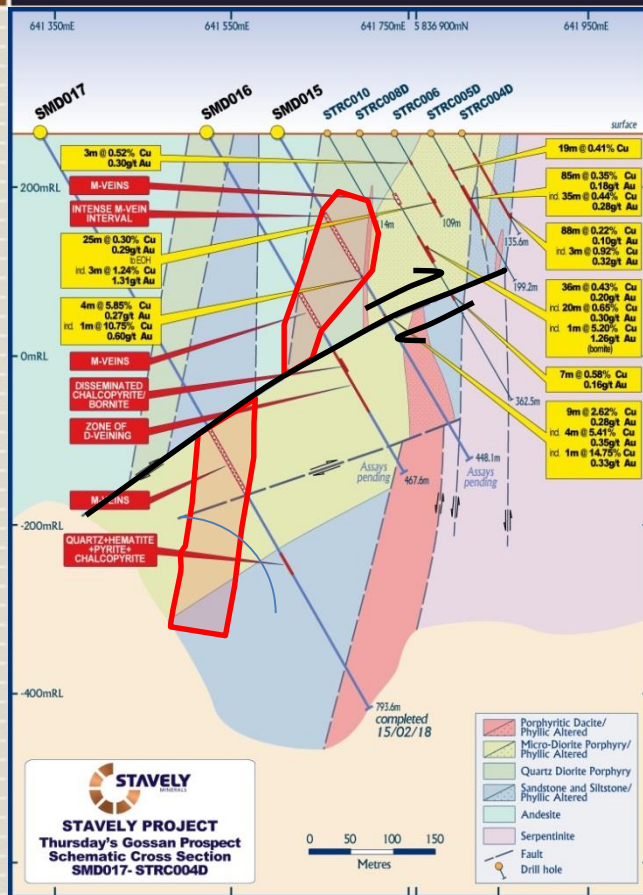
## Results from sulphide veins in SMD015:

- 9m of 2.62% copper and 0.28g/t gold, including
  - 4m of 5.41% copper and 0.35g/t gold, including
    - 1m at 14.75% copper and 0.33g/t gold
- 4m at 5.85% copper and 0.27g/t gold, including
  - 1m at 10.75% copper and 0.60g/t gold

see ASX announcement 19/01/2018 and available from [www.stavely.com.au](http://www.stavely.com.au)



# THURSDAY'S GOSSAN PORPHYRY



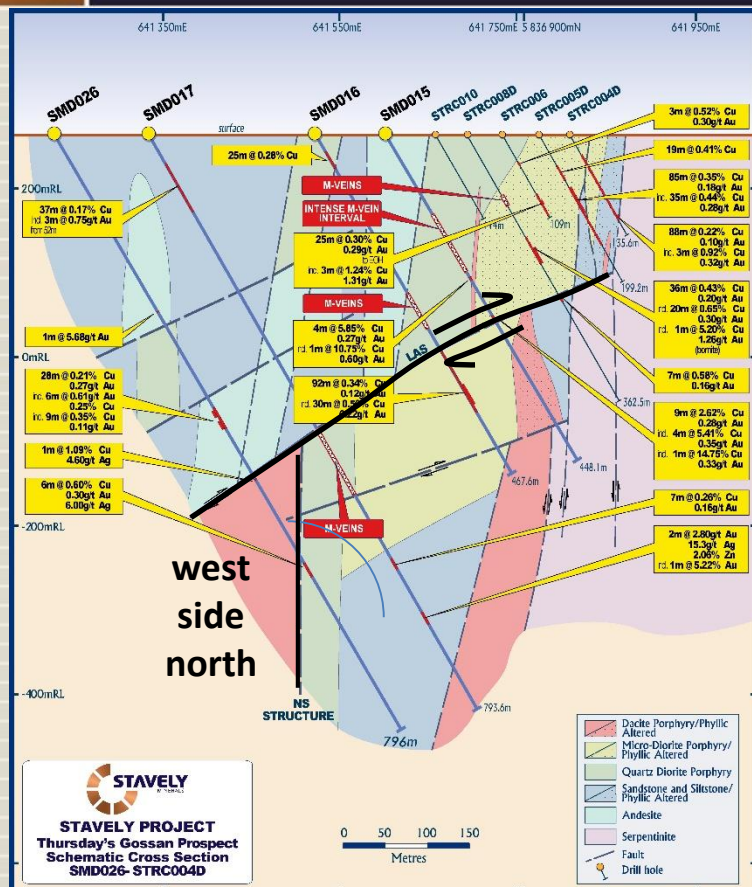
## SMD017

- 80m interval of porphyry 'M' veins from 408m to 488m – below the LAS
  - also with early porphyry 'A' veins
- The 'M' veins in SMD017 display similarities to the Cadia Ridgeway barren E-1A and E-1B veins but – importantly also the E-2 laminated 'M' veins that are associated with the main copper-gold mineralised event

see ASX announcement 18/02/2018 and available from [www.stavely.com.au](http://www.stavely.com.au)



# THURSDAY'S GOSSAN PORPHYRY



## SMD026

- Intercepted another major structure below the LAS
- The north-south (NS) structure has a component of dextral strike-slip
- Higher grades of gold encountered:
  - 1m at 5.68g/t gold
  - 28m at 0.21% copper and 0.27g/t gold, including
    - 6m at 0.25% copper and 0.61g/t gold
  - 6m at 0.60% copper and 0.30g/t gold

see ASX announcement 5/09/2018 and available from [www.stavely.com.au](http://www.stavely.com.au)

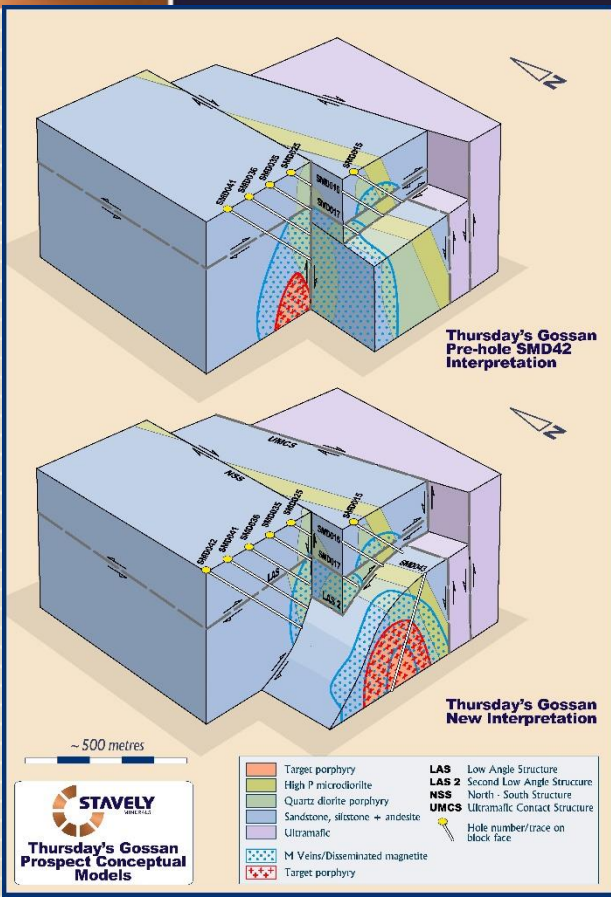


# THURSDAY'S GOSSAN PORPHYRY



## SMD042

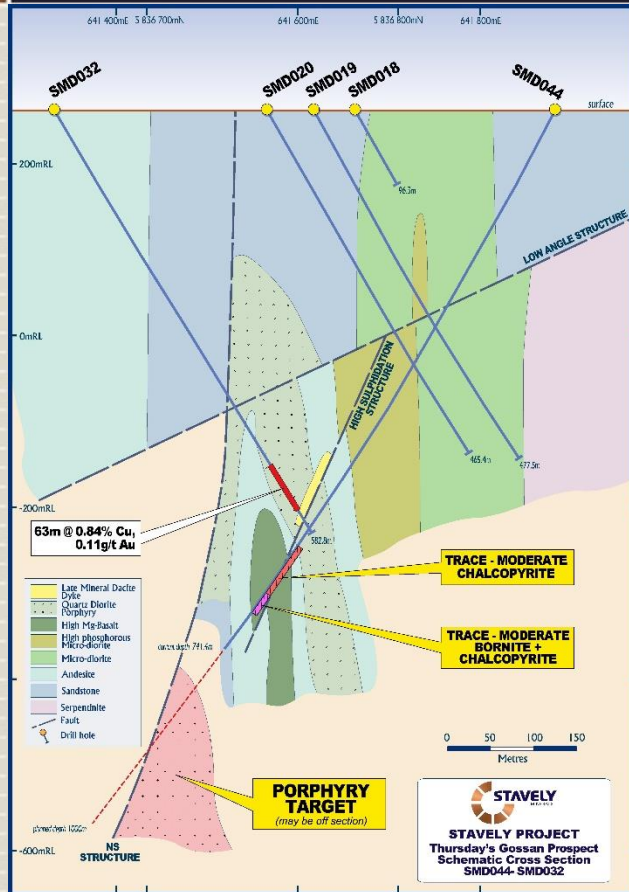
- Drilled just prior to Christmas
- Intercepted the NS structure 225m earlier than expected
- Required a re-think of the structural geometries
  1. The LAS was not mineralised to the north but was to the south
  2. The NS structure is mineralised with higher grade to the south
- ❖ Therefore, with the NS structure shallowing to the west at depth, the porphyry had to be 'under' it on the east side
- ❖ If it's on the east side of the NS structure, it must be south due to the dextral movement on the NS structure (right side towards south)



see ASX announcement 5/09/2018 and available from [www.stavely.com.au](http://www.stavely.com.au)



# THURSDAY'S GOSSAN PORPHYRY



## SMD044 (as at last week...)

- Intercepted **110m of chalcopyrite mineralisation**, of which
  - **40m of mixed chalcopyrite and bornite mineralisation** (assays early March?)
- The character is copper lode-style mineralisation with hematite, specular hematite, magnetite, anhydrite with chalcopyrite, bornite and chalcocite copper mineralisation
- The great unknown is what the gold grades will be...

see ASX announcement 11/02/2019 and available from [www.stavely.com.au](http://www.stavely.com.au)



# THURSDAY'S GOSSAN PORPHYRY



**SMD044 (in-progress)**

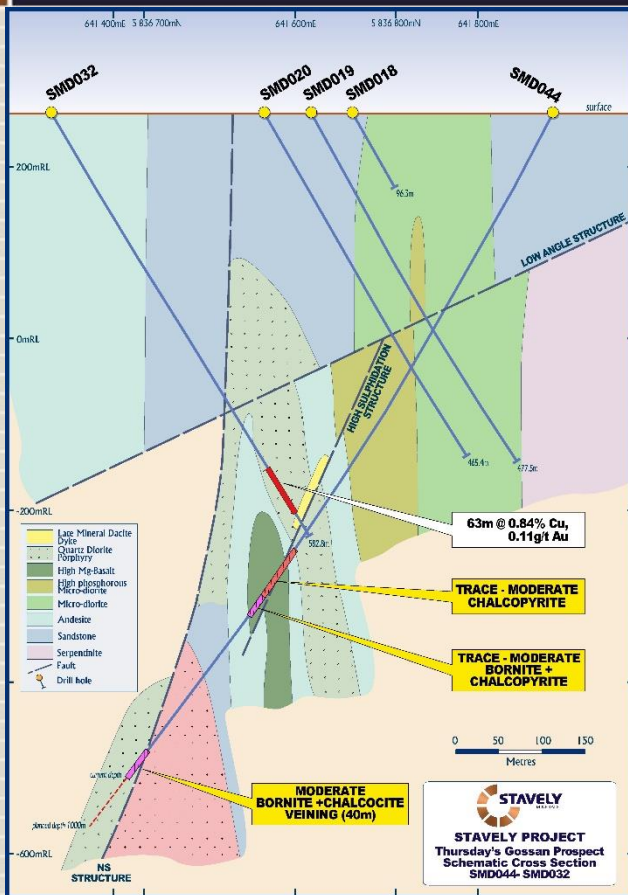
Anhydrite-pyrite-chalcopyrite  
vein at 589m



Anhydrite stockwork veining with well-  
developed chalcopyrite at 622.6m



# THURSDAY'S GOSSAN PORPHYRY

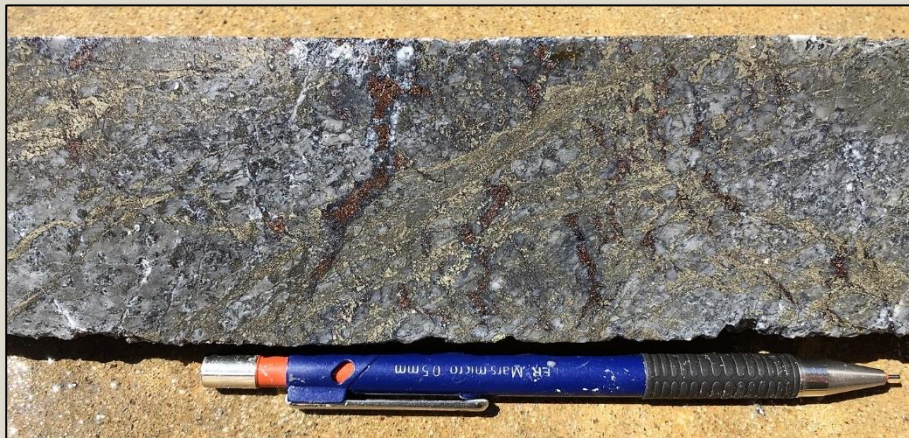


## SMD044 (as at this week...)

- Intercepted **110m of chalcopyrite mineralisation**, of which
  - **40m of mixed chalcopyrite and bornite mineralisation** (assays early March?)
- On the NSS, has intercepted **~40m of high-grade bornite-chalcocite copper mineralisation**
- The great unknown is (again) what the gold grades will be...



# THURSDAY'S GOSSAN PORPHYRY



## SMD044 (in-progress)

Silica-pyrite mineralisation cut  
by bornite-chalcocite at  
924.3m



see ASX announcement  
18/02/2019 and available  
from [www.stavely.com.au](http://www.stavely.com.au)

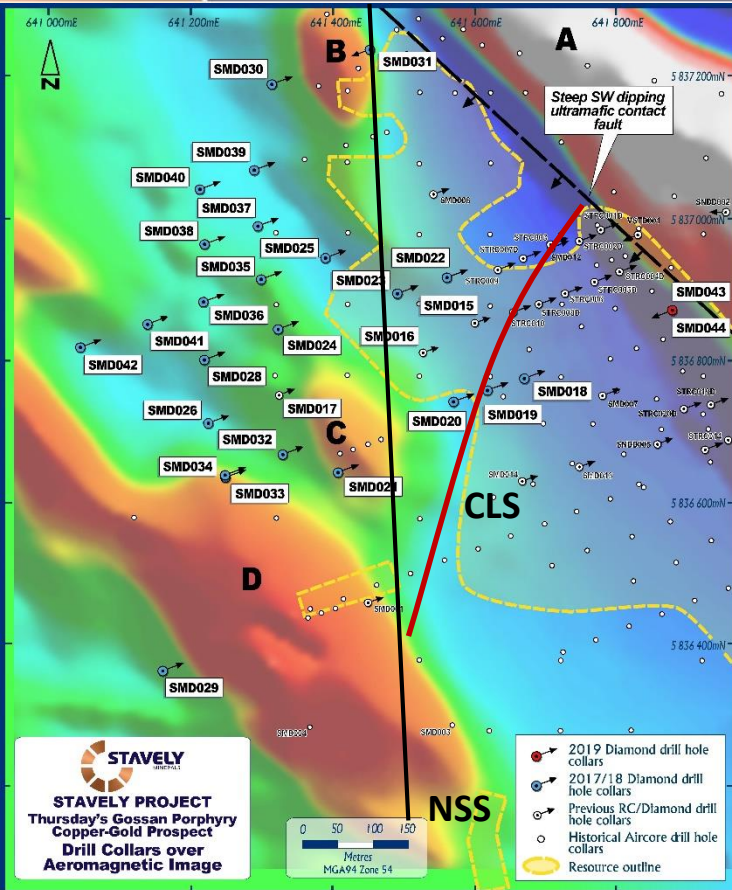


# THURSDAY'S GOSSAN PORPHYRY



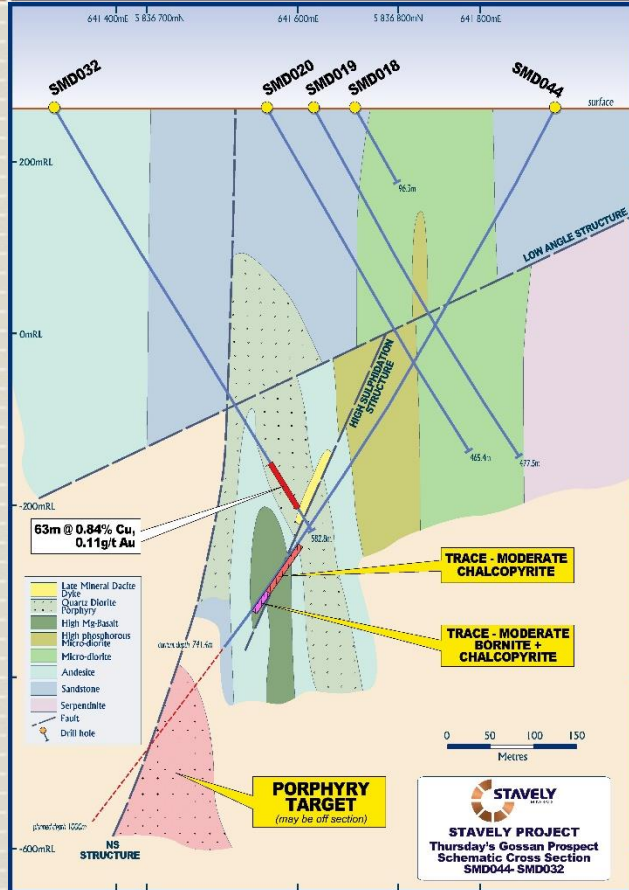
## Copper Lode Structure (CLS)

- Intercepted in a couple of holes:
- STRC019D – 3m at 2.65% copper and 1.17g/t gold
- SMD015 - 9m of 2.62% copper and 0.28g/t gold, including
  - 4m of 5.41% copper and 0.35g/t gold, including
    - 1m at 14.75% copper and 0.33g/t gold
  - 4m at 5.85% copper and 0.27g/t gold, including
    - 1m at 10.75% copper and 0.60g/t gold
- SMD032 - 6m at 6.73% copper, 0.84g/t gold, including
  - 1m at 22.8% copper, 0.91g/t gold, and
  - 2m at 2.43% copper, 0.28g/t gold





# THURSDAY'S GOSSAN PORPHYRY



## SMD032

- Intercepted major sulphide veins
- Copper Lode style in character – means it is above a porphyry
- Highest grades yet encountered:
  - **63m at 0.84% copper and 0.11g/t gold, including**
    - **6m at 6.73% copper, 0.84g/t gold, including**
    - **1m at 22.8% copper, 0.91g/t gold, and**
    - **2m at 2.43% copper, 0.28g/t gold**

see ASX announcement 19/01/2019 and available from  
[www.stavely.com.au](http://www.stavely.com.au)



# THURSDAY'S GOSSAN PORPHYRY



Copper Lode-style (think Magma Mine veins) pyrite-chalcopyrite-bornite-covellite-chalcocite mineralisation from 542.5m – note the chalcocite occurs as late network veins within the more massive sulphides

see ASX announcement 19/01/2019 and available from [www.stavely.com.au](http://www.stavely.com.au)



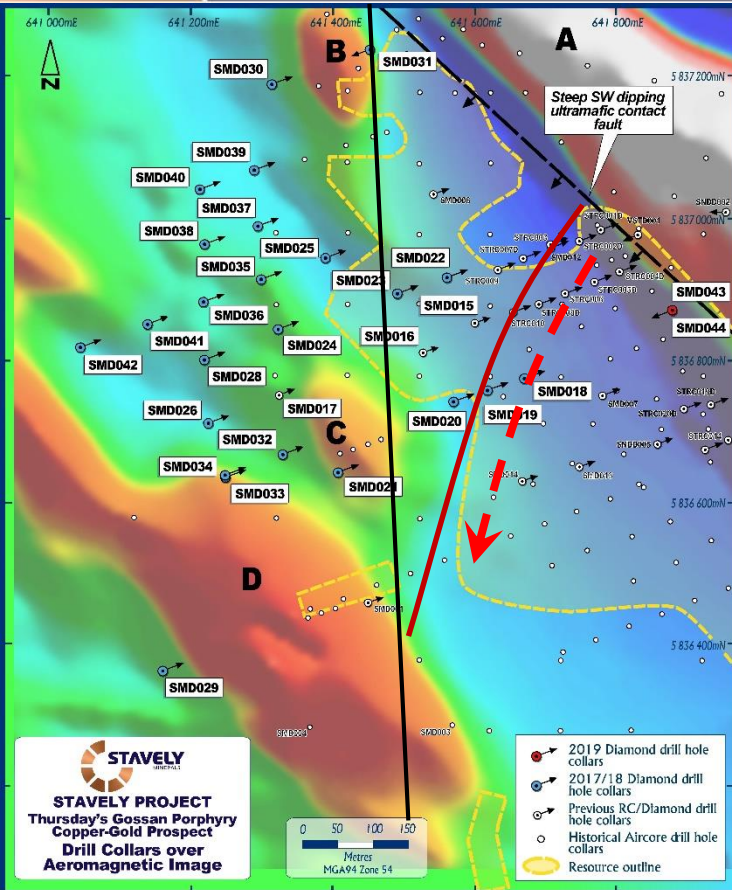
# THURSDAY'S GOSSAN PORPHYRY



## Copper Lode Structure

These structures are very important:

1. They are a genuine exploration target in their own right – high grade, intercepted over 400m vertically and ~500m along strike – an analogy would be the Magma Mine, Superior Arizona
2. They can be followed down to the source porphyry – eg. Resolution Porphyry
3. The NSS and CLS converge to the south of the current drill hole SMD044





# THURSDAY'S GOSSAN PORPHYRY



## Magma Mine and the Resolution Porphyry

Can follow the Magma copper lode veins to the porphyry

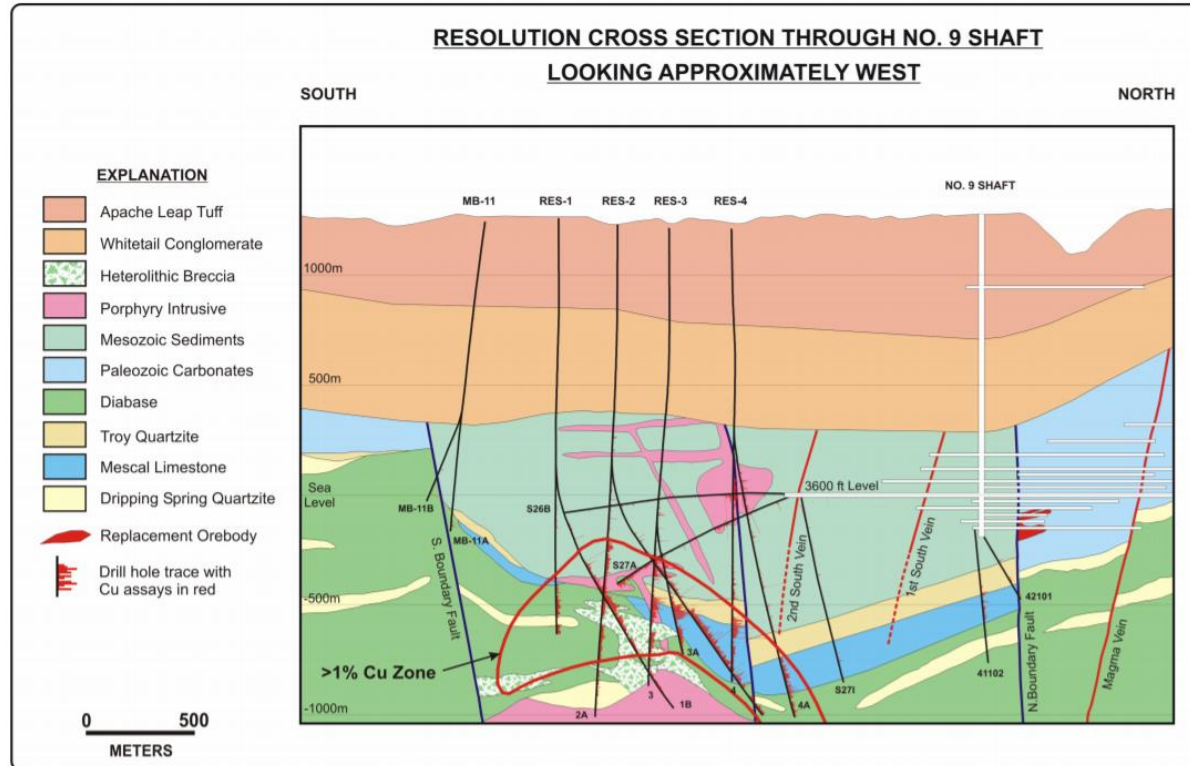


Figure 1



# TAKEAWAY MESSAGES



1. An undiscovered copper-gold porphyry exists at Thursday's Gossan
2. They are amongst the largest gold deposits in the world
3. At 500Ma of age, it's structurally complicated
4. **We remain confident we will find it**
5. We can't tell you what the size and grade will be until we get some holes into it





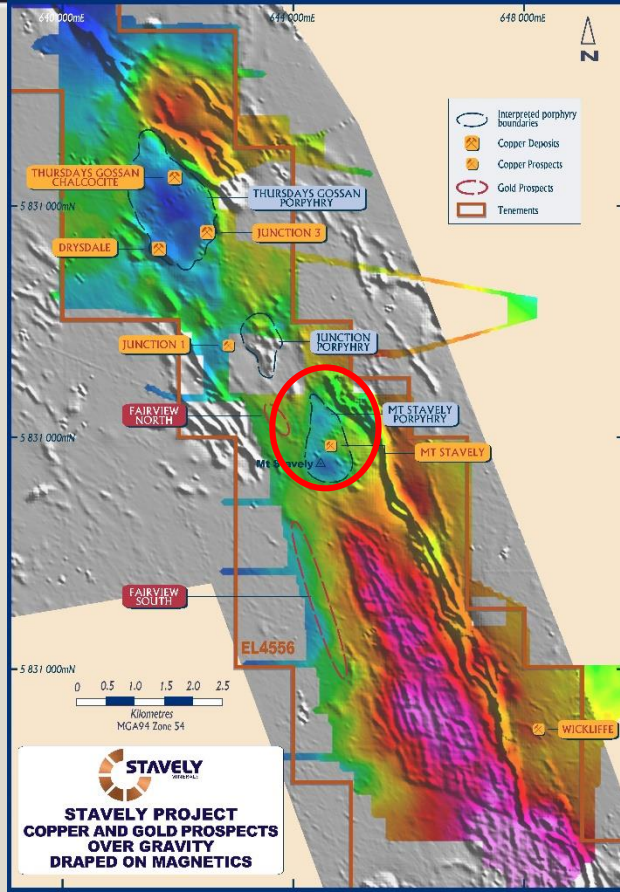
**STAVELY**  
MINERALS

**MOUNT STAVELY**



# STAVELY PROJECT

**STAVELY**  
MINERALS



## Mount Stavelly Prospect

Both Thursday's Gossan and Mount Stavelly are expressed as lows in the gravity data

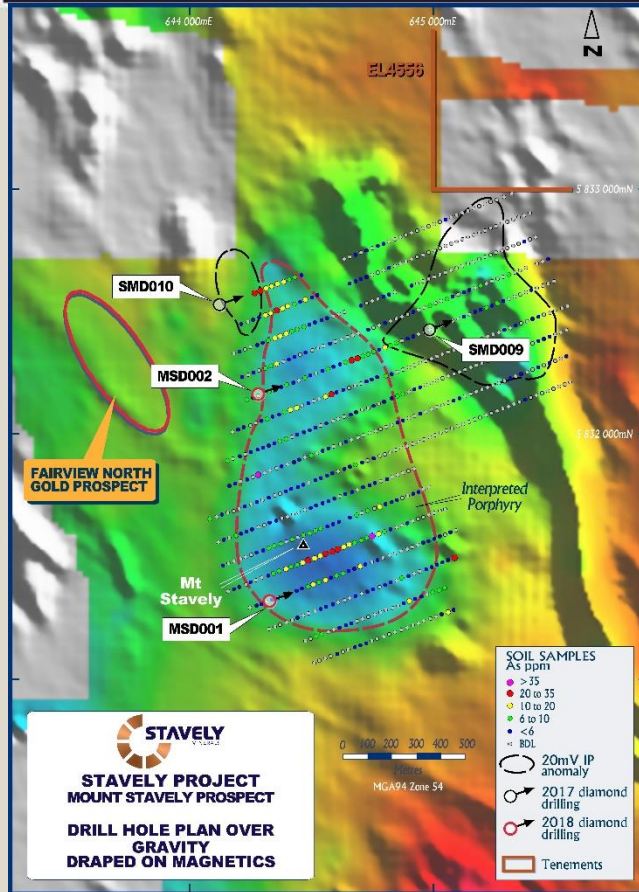


# STAVELY PROJECT

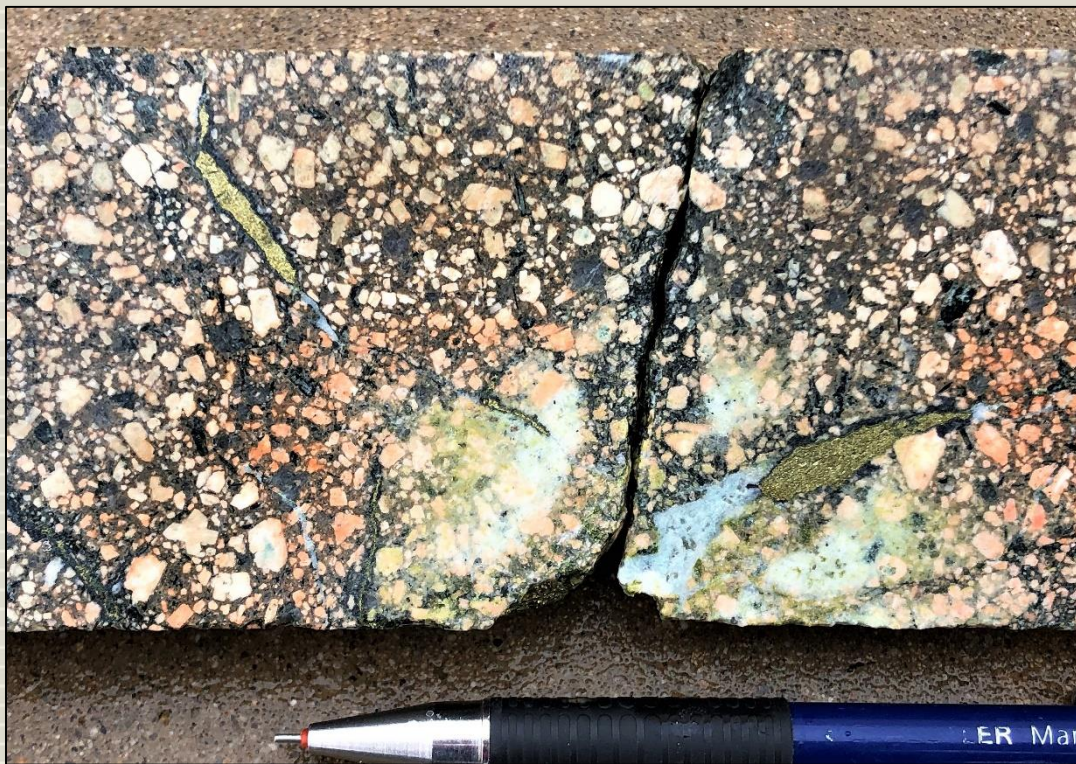
**STAVELY**  
MINERALS

## Mount Stavelly Prospect

MSD001 (the first drill hole ever into Mount Stavelly)







## Mount Stavely Prospect

MSD001 (the first drill hole ever into Mount Stavely)

- ✓ Quartz-carbonate veins with chalcopyrite rimmed by bornite
- ✓ Hematite alteration
- ✓ There's another porphyry out there....



The background features a dark blue field with a large, faint, circular graphic resembling a stylized sun or a mineral structure. This graphic has a central dark blue circle, surrounded by concentric rings of copper-colored segments. The word "STAVELY" is written in large, bold, white capital letters, and "MINERALS" is written in smaller, white capital letters below it.

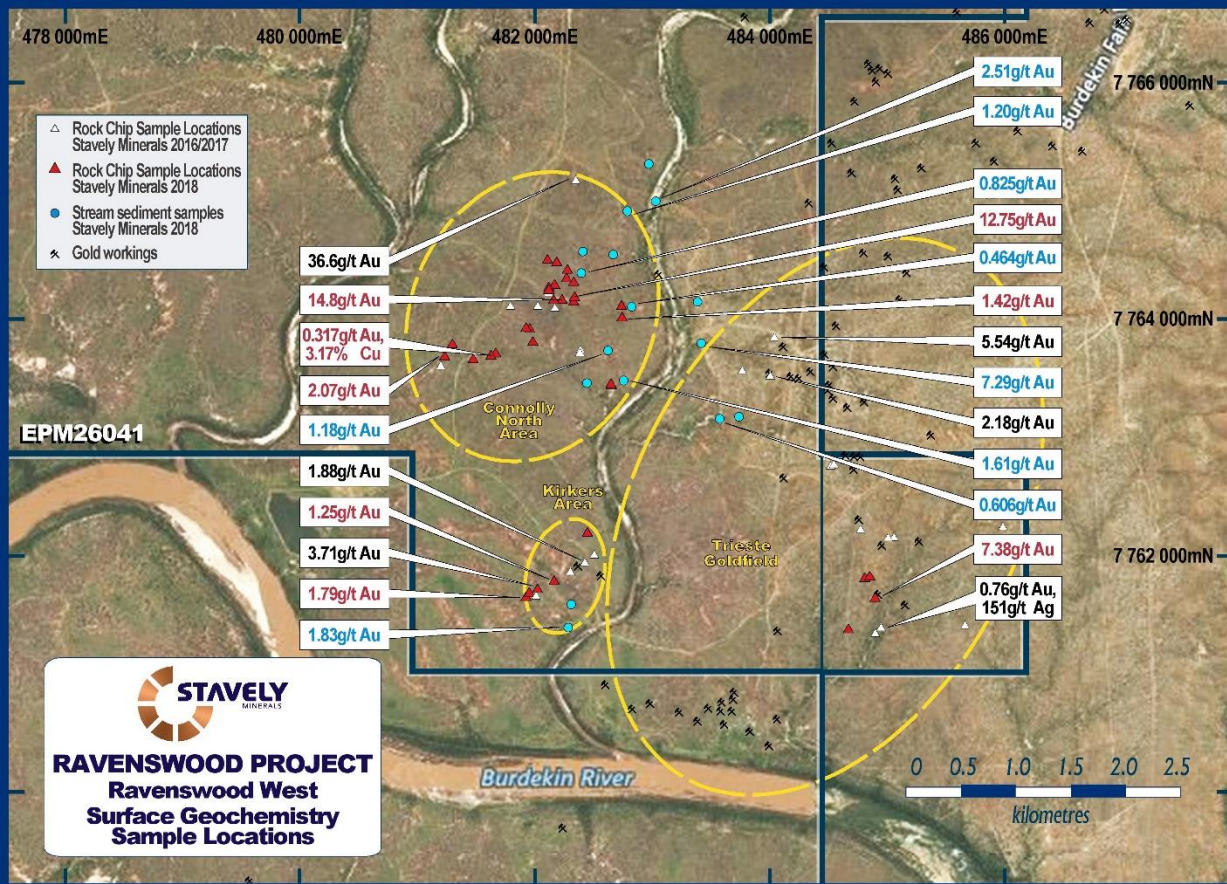
**STAVELY**  
MINERALS

A vertical bar on the left side of the image, divided into a copper-colored top half and a white bottom half.

**QUEENSLAND**



# QUEENSLAND PROJECTS



## Connolly Prospect, Ravenswood

Rock-chips results:

- 36.6g/t gold
  - 14.8g/t gold
  - 12.75g/t gold
- ✓ Similar to the Sarsfield deposit at Ravenswood Gold Mine (15km away)
- ✓ Drill-ready for late March

see ASX announcement 17/07/2018 and available from [www.stavely.com.au](http://www.stavely.com.au)



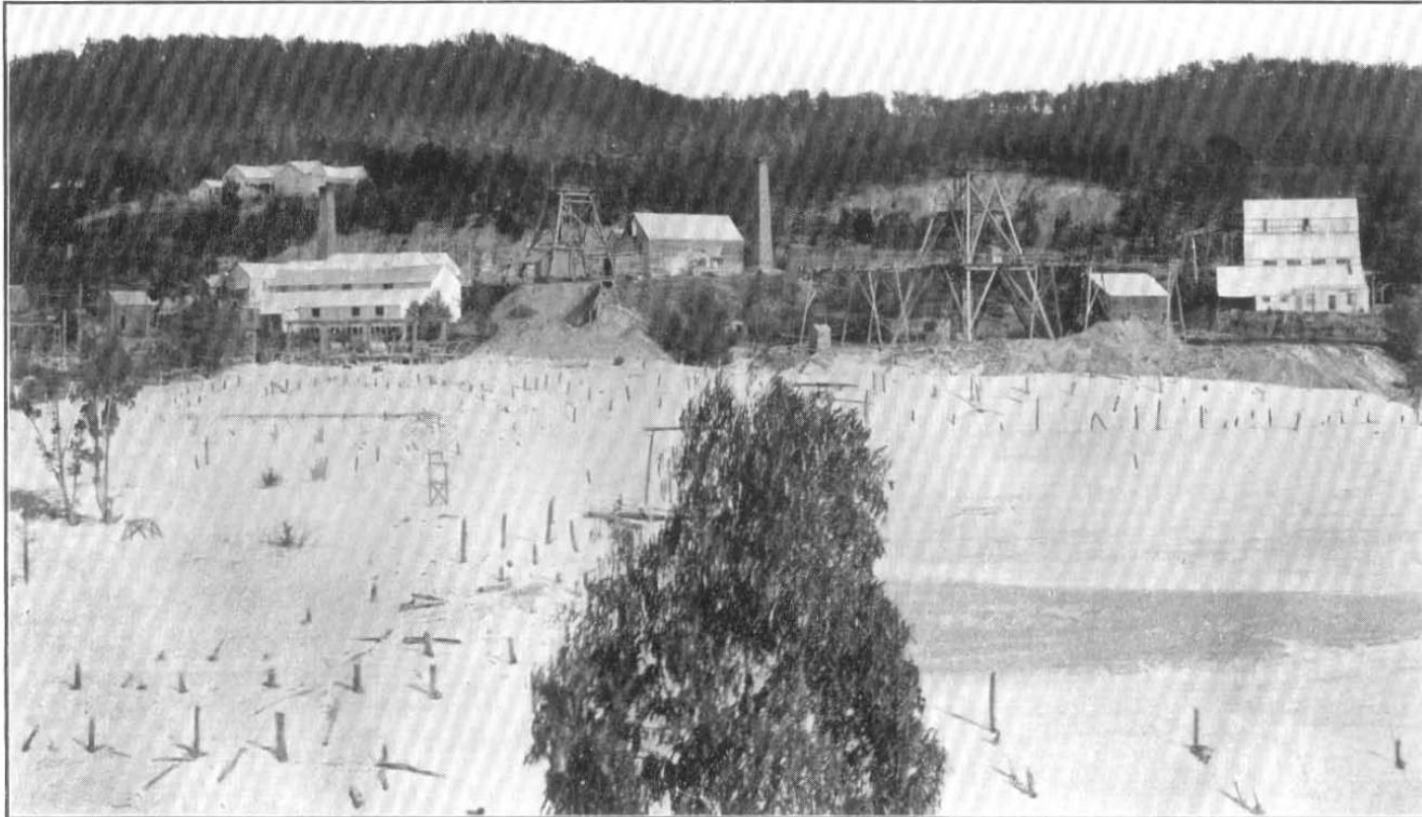
The background features a dark navy blue field with a large, faint, circular graphic resembling a stylized sun or a mineral structure. This graphic has a central dark circle, surrounded by concentric rings of segments. The segments are colored in a gradient from dark blue to a bright orange-gold. The word "STAVELY" is written in a large, bold, white sans-serif font, and "MINERALS" is written in a smaller, white sans-serif font directly below it. On the left side of the image, there is a vertical bar with a copper or bronze metallic texture.

**STAVELY**  
MINERALS

**TASMANIA**



# MATHINNA GOLD PROJECT

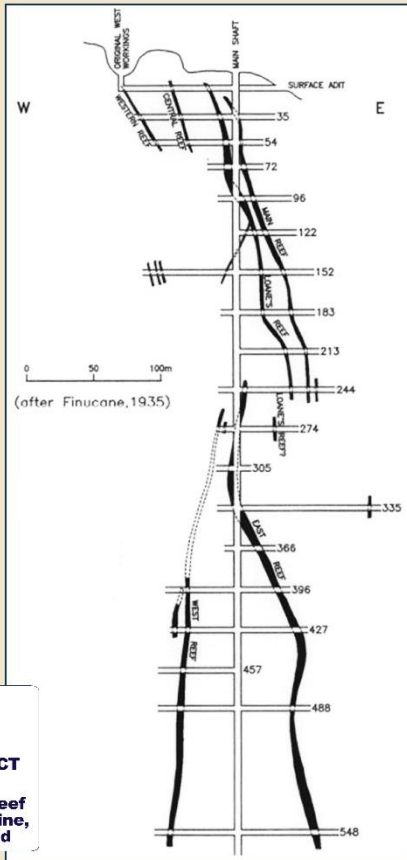


*Frontispiece.*

1. NEW GOLDEN GATE AND TASMANIAN CONSOLS MINES.



# MATHINNA GOLD PROJECT



  
**MATHINNA PROJECT**  
Tasmania  
**E-W Section Main reef**  
New Golden Gate Mine,  
Mathinna Goldfield

To closure in 1932, the Mathinna Goldfield produced circa 300,000 ounces of gold at an average grade of 26g/t gold\*

- ✓ Vertically extensive high-grade gold mineralisation
- ✓ Very little modern work done since
- ✓ Stavely granted priority rights for application for a retention licence (RL)
  - Going through the statutory processes of advertising etc.

\*Tasmania Department of Mines, Geology Report No. 5





**TAKE AWAY MESSAGES**



# TAKE AWAY MESSAGES



- ✓ Stavely Minerals is well in the chase for a copper-gold porphyry at Thursday's Gossan
- ✓ Results to date are great **but** we are not yet in the sweet spot and grades should be very attractive when we do get there
- ✓ **We are confident we will find it**
- ✓ Drilling on-going
- ✓ Other significant discovery opportunities
  - Stavely Belt porphyry targets
    - eg. Toora West, Mount Stavely, Drysdale and Junction
  - Queensland – Connolly North and Dreghorn prospects
  - Tasmania – Mathinna Goldfield



## Thank You

Contact Us:

Stavely Minerals Limited

Level 1, 168 Stirling Highway

Nedlands WA 6009

[www.stavely.com.au](http://www.stavely.com.au)

[info@stavely.com.au](mailto:info@stavely.com.au)

Ph: 08 9287 7630

*The information in this presentation is extracted from information available to view on [www.stavely.com.au](http://www.stavely.com.au). The company confirms that it is not aware of any new information or data that materially affects the information included in the original market announcement and, in the case of estimates of Mineral Resources or Ore Reserves, that all material assumptions and technical parameters underpinning the estimates in the relevant market announcement continue to apply and have not materially changed. The company confirms that the form and context in which the Competent Person's findings are presented have not been materially modified from the original market announcement.*