



Riversgold Ltd

New Discoveries in World-Class Gold Terranes

RIU Explorers' Conference, February 2019

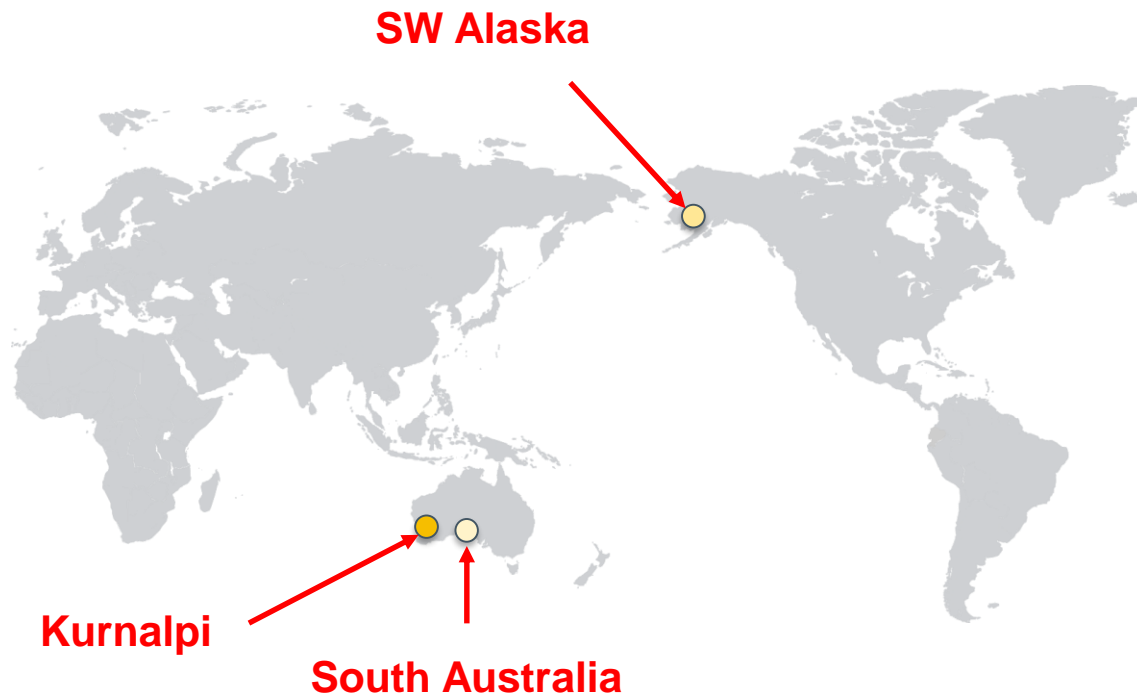
Allan Kelly
Managing Director

Riversgold – investment highlights

- **Making new discoveries in world-class gold provinces:**
 - **Eastern Goldfields of Western Australia**
 - **Tintina Gold Province, SW Alaska, USA**
- Looking for a **large IOCG deposit** in the **Olympic Cu-Au Province** of South Australia
- Board/Management **track record of successful exploration, discovery, development and production**
- Cornerstone investment by **Evolution Mining Limited**
- **Regular news flow** since listing in October 2017



Exploring in world-class gold provinces



	Kurnalpi	SW Alaska	South Australia
Location	Eastern Goldfields, WA	Tintina Gold Province	Olympic Cu-Au Province
Deposit type	Mesothermal lode Gold	Intrusion-Related Gold	Iron-Oxide Copper- Gold
Target	Development opportunities near existing processing plants	Large stand-alone gold project	Large stand-alone IOCG project
Target size	Up to 2Moz Au	+4Moz Au	+100Mt @ 1% Cu, 1 g/t Au
Examples	various	Donlin Creek Pogo Fort Knox	Olympic Dam Carrapateena Prominent Hill

The first 12 months – hitting the ground running...

- **Drilled every quarter since listing**
 - First drilling campaign commenced **7 days after listing**
- **New (high-grade) gold discoveries in WA:**
 - **Farr-Jones, Cutler, Eales and Little**
 - **Queen Lapage**
- Identified **multiple high-grade gold occurrences** along **North Fork Fault** during first Alaskan field programme
- New projects added at **Cutler, Gemuk, Midway, Burt Lagoon** and a new JV with Alloy Resources Limited
- Large **Churchill Dam IOCG** target permitted for drill testing
- **~75% of funds spent on the ground**



Riversgold – corporate snapshot

Mission statement: “To create superior value for shareholders by discovering and monetising world-class mineral deposits.”

Board

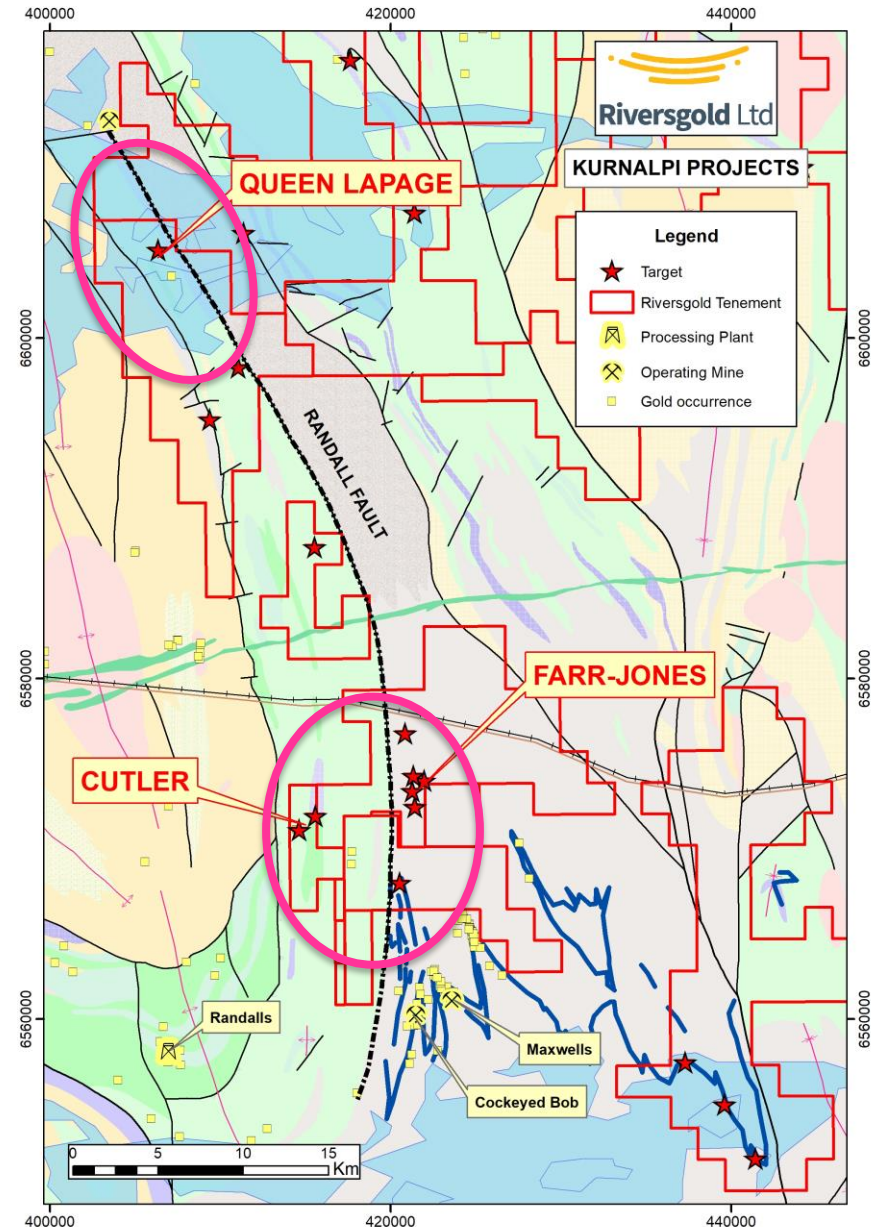
Rod Webster <i>Non Exec. Chairman</i>	Mining Engineer with >40 years experience Previous roles with Western Metals, First Quantum, Weatherly
Allan Kelly <i>Managing Director</i>	Geologist with >25 years experience Founding MD, Doray Minerals Ltd: <ul style="list-style-type: none"> • Best performing ASX IPO of 2010 • AMEC “Prospector Award”, 2014
Jeff Foster <i>Non Exec. Director</i>	Geologist with >30 years industry experience. Former Executive roles with BHP, Sirius Minerals, S2 Resources
Aaron Colleran <i>Non Exec. Director</i>	Geologist with over 30 years finance and industry experience. Former VP Business Development with Evolution Mining

ASX Code	RGL
Shares on Issue	91.3M
Market Cap (@ \$0.06 a share)	\$5.4M
Cash (31 Dec 2018)	\$1.1M
Enterprise Value	\$4.3M

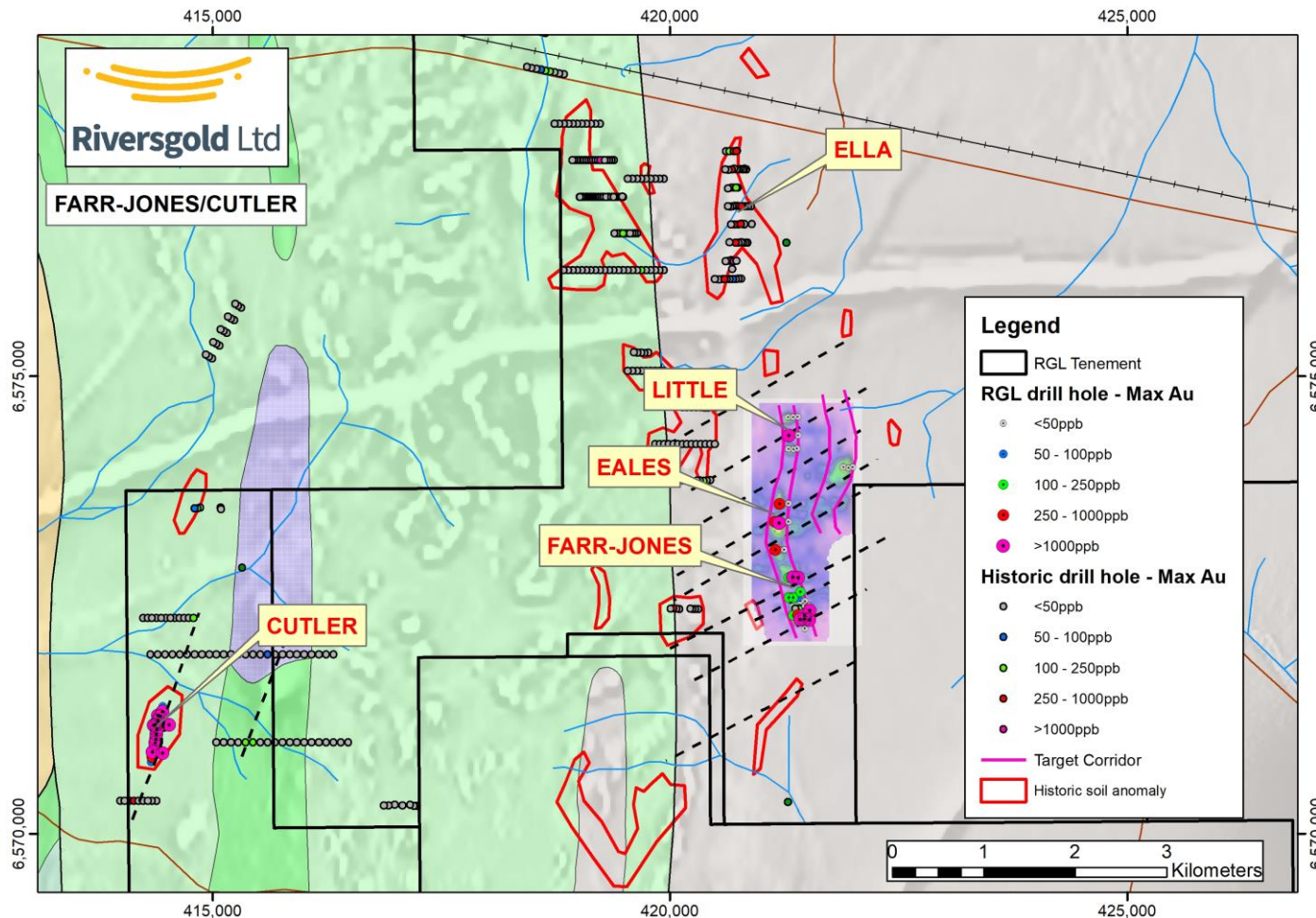
Major Shareholders	%
Evolution Mining Ltd	17.2
Greenwich Equities Pty Ltd	15.4
Citymist Holdings Pty Ltd	8.2
Board and Management	10.0
Top 20 Shareholders	<u>64.4</u>

WA Gold Projects

- Strategic land position on the “**Randall Fault**”, 70km east of Kalgoorlie/Boulder, WA
 - Proximity to mines/processing plants
 - Limited recent and/or deep drilling
 - Modern exploration generating new discoveries
- **Farr-Jones/Cutler**
 - Emerging gold camp with multiple new discoveries over >2.5km of strike
- **Queen Lapage**
 - First aircore programme outlines large new gold targets under Lake Yindarlgooda

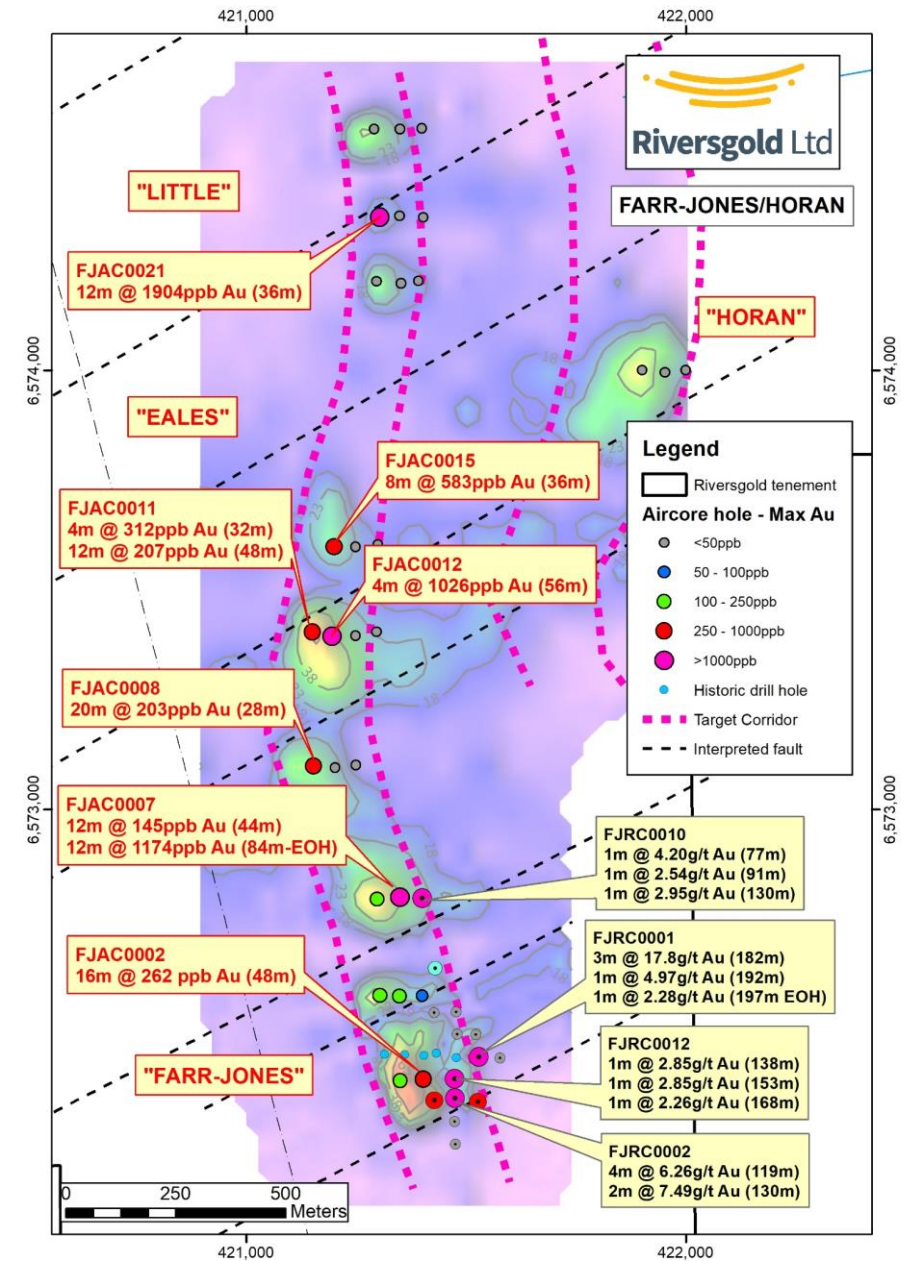
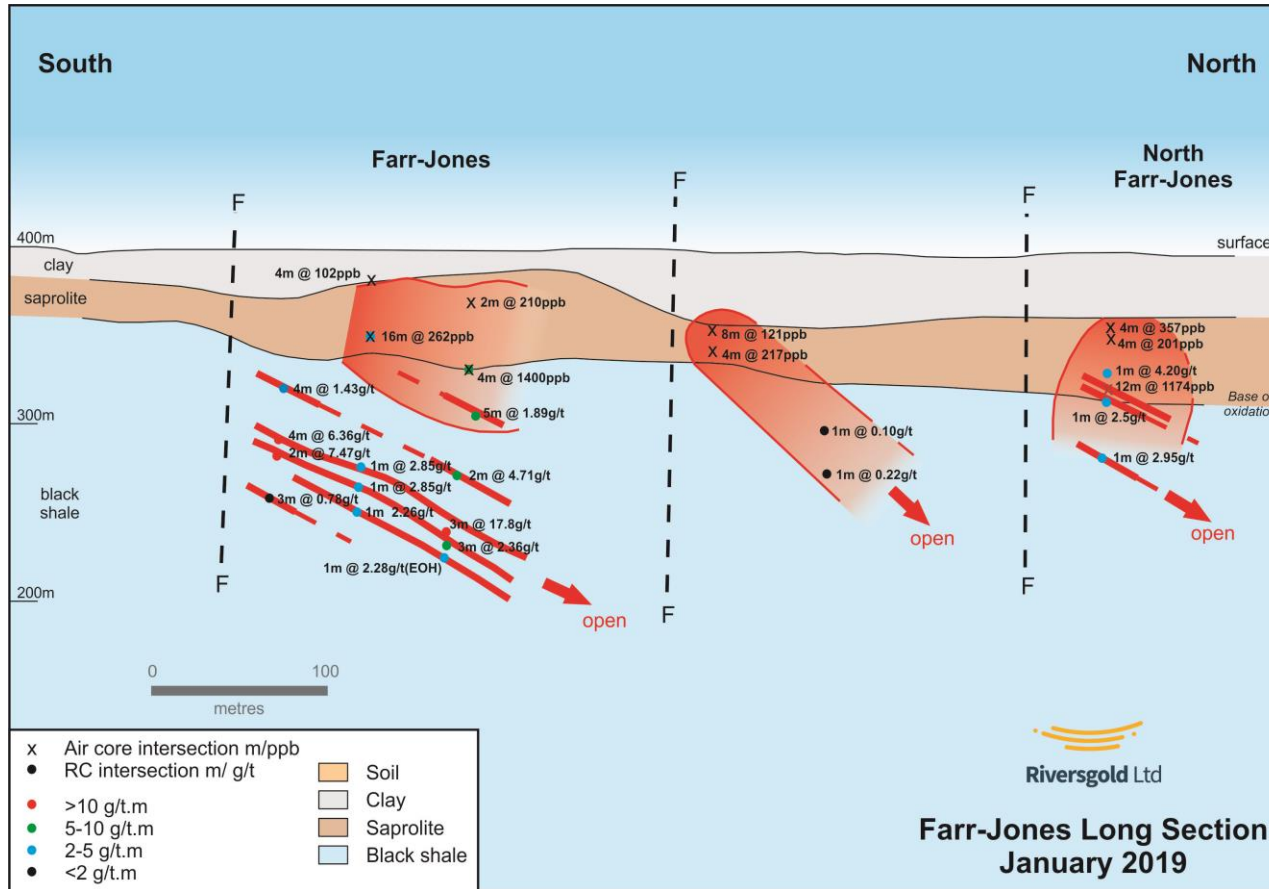


Farr-Jones/Cutler – an emerging new gold camp?

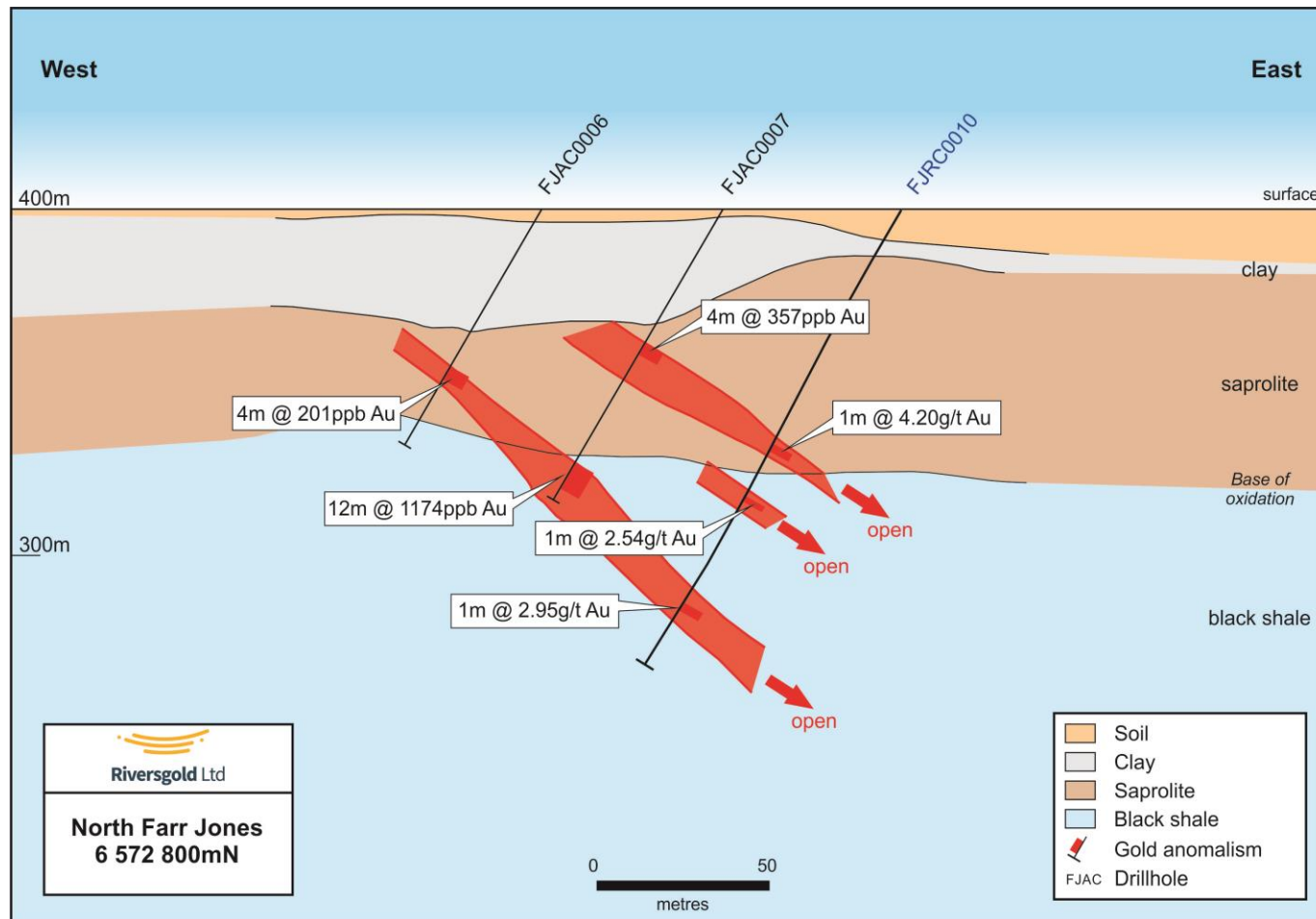


- RC drilling intersected **high-grade gold** mineralisation at:
 - **Farr-Jones**
 - **Cutler**
- Aircore drilling intersected new gold mineralisation beneath soil anomalies at:
 - **Eales**
 - **Little**
- Additional drill targets at **Ella**
- Multiple soil anomalies to test
- Land position expanded with **new applications**

Farr-Jones

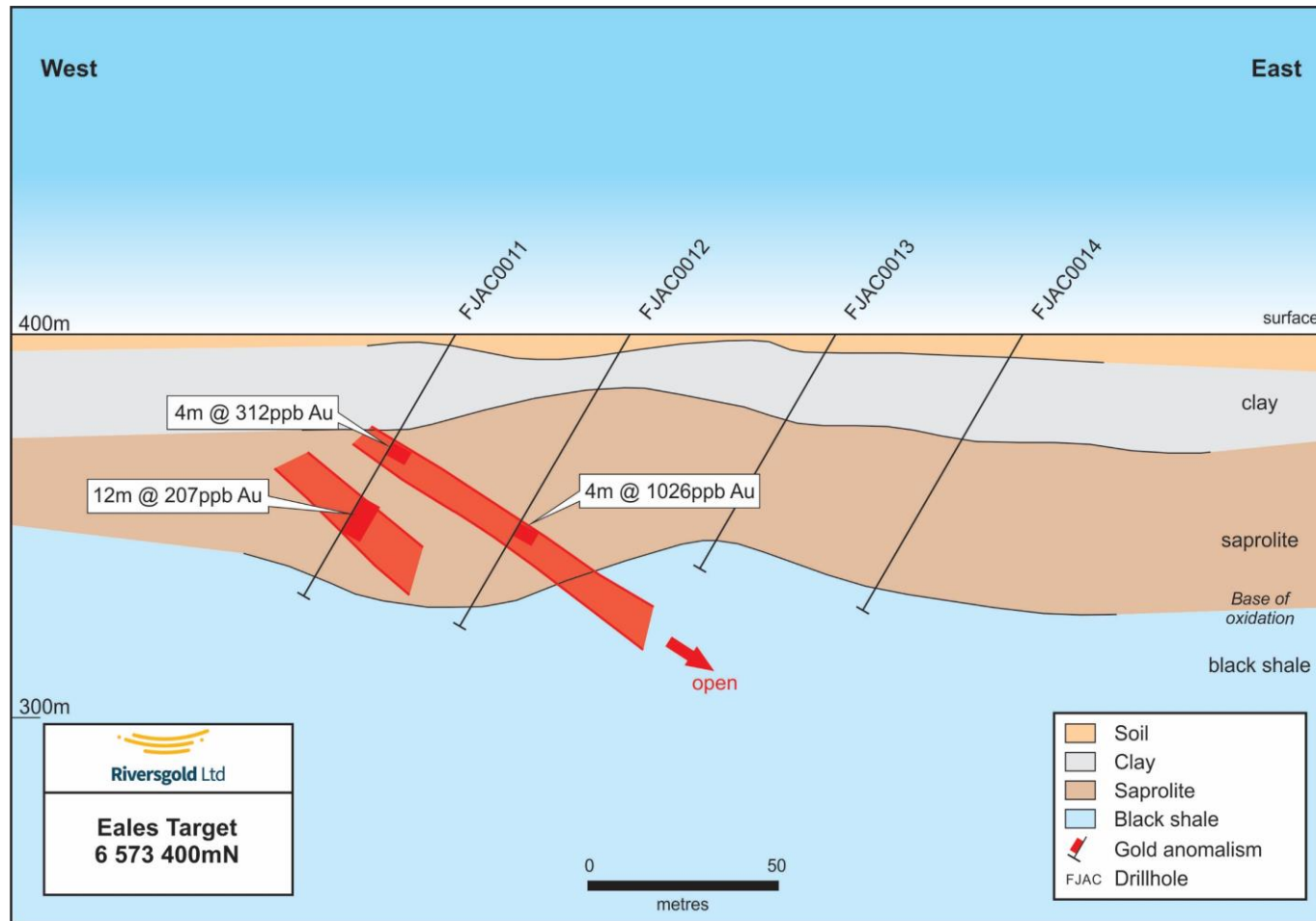


North Farr-Jones – new gold discovery under soil anomaly



- Oxide and primary gold mineralisation
- Shallow aircore drilling:
 - 4m @ 201ppb Au
 - **12m @ 1174ppb Au**
 - 4m @ 357ppb Au
- Follow-up RC drilling:
 - **1m @ 4.20g/t Au**
 - **1m @ 2.54g/t Au**
 - **1m @ 2.95g/t Au**
- **Open at depth**

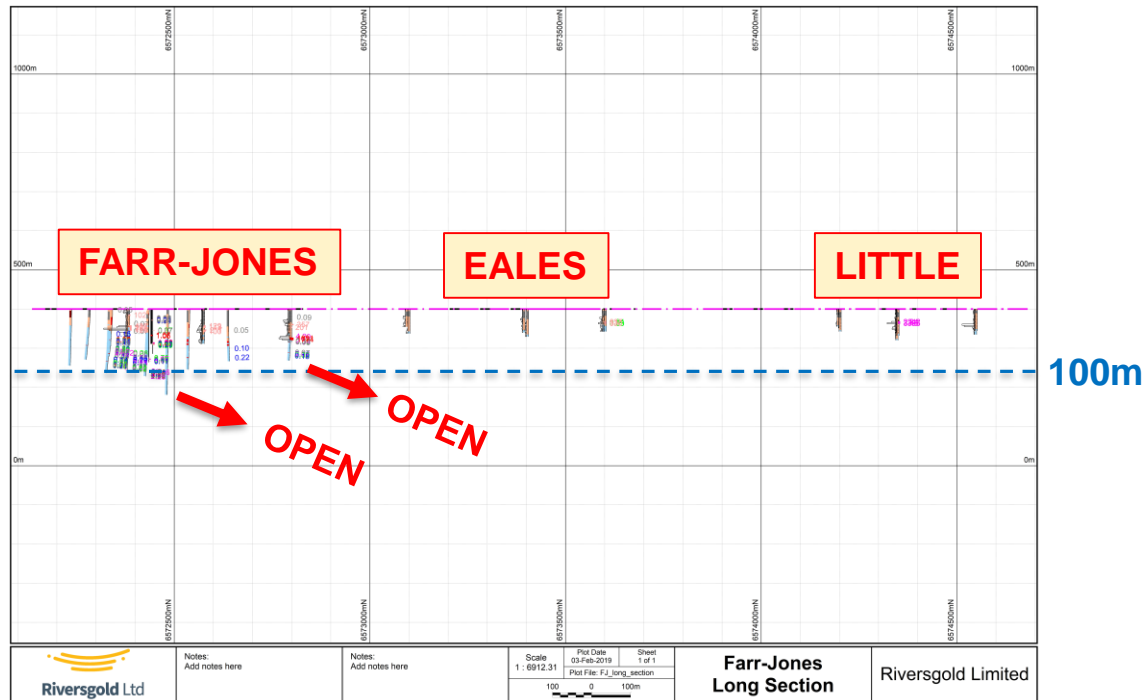
Eales Prospect – new gold discovery under soil anomaly



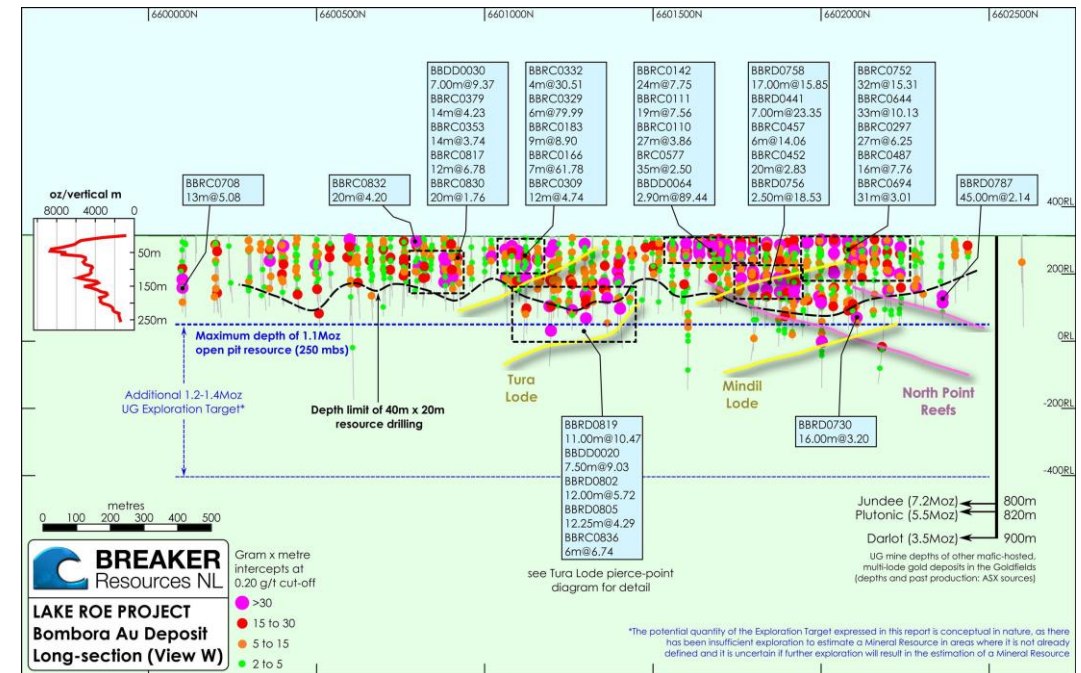
- 700m long soil anomaly
- Significant gold anomalism intersected on three sections
- **FJAC0012**
 - **4m @ 1.03g/t Au (56m)**
- **Open at depth**



How big is Farr-Jones?

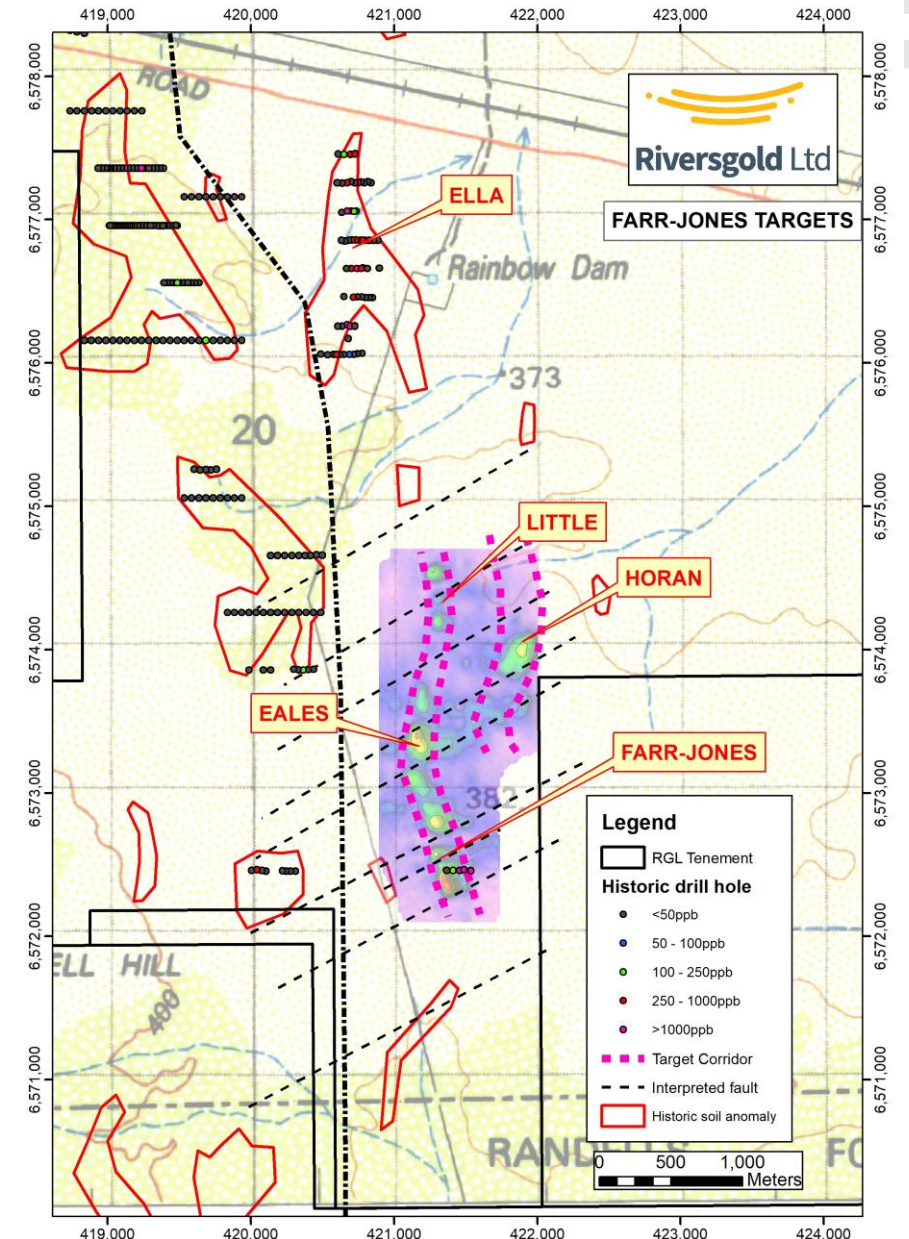
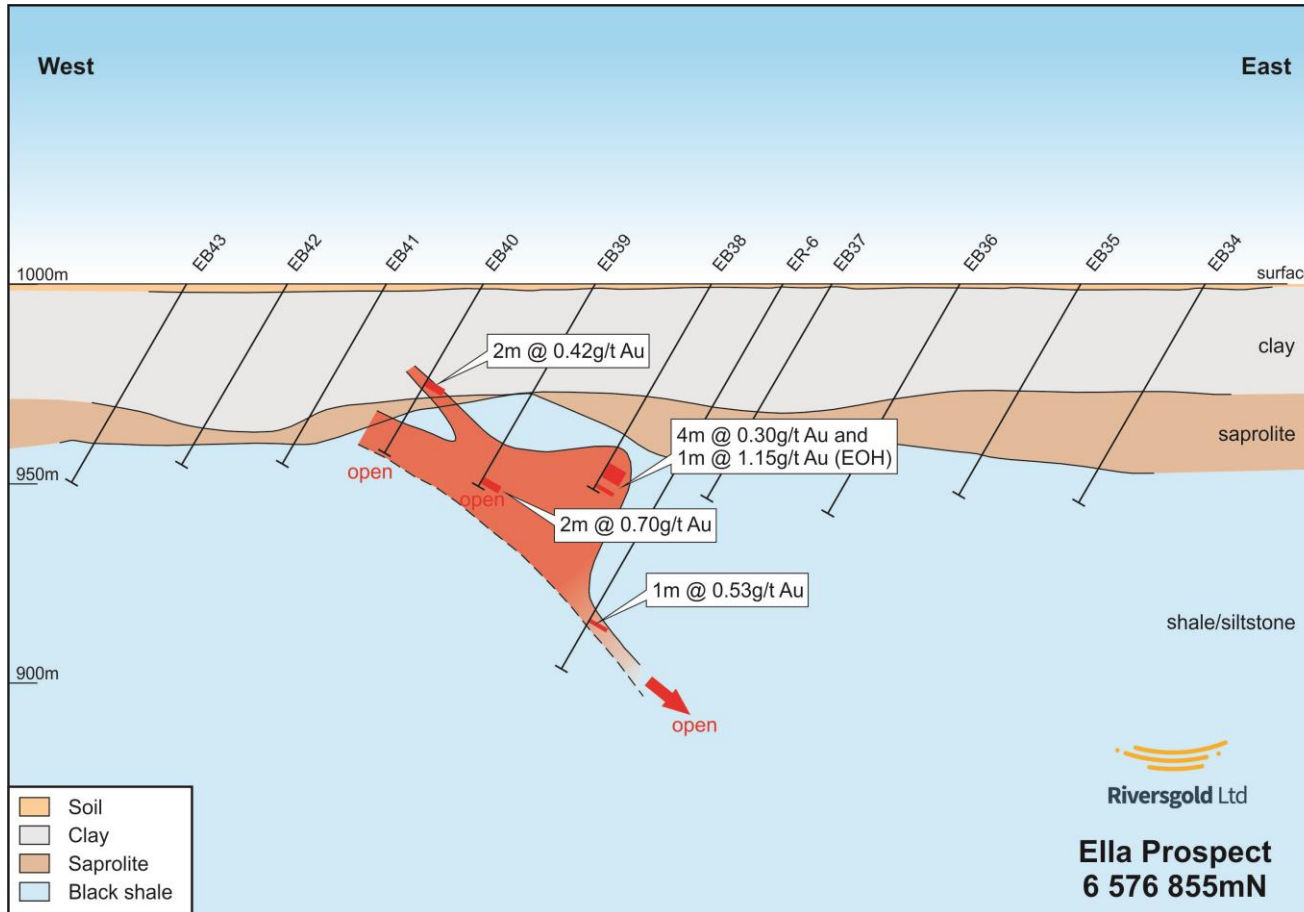


Lake Roe deposit (1.1Moz Au) at same scale



- Soil anomalism over >2.5km of strike
- Multiple hits in wide-spaced aircore drilling
- Economic grades in deeper RC drilling
- Most holes still <100m deep

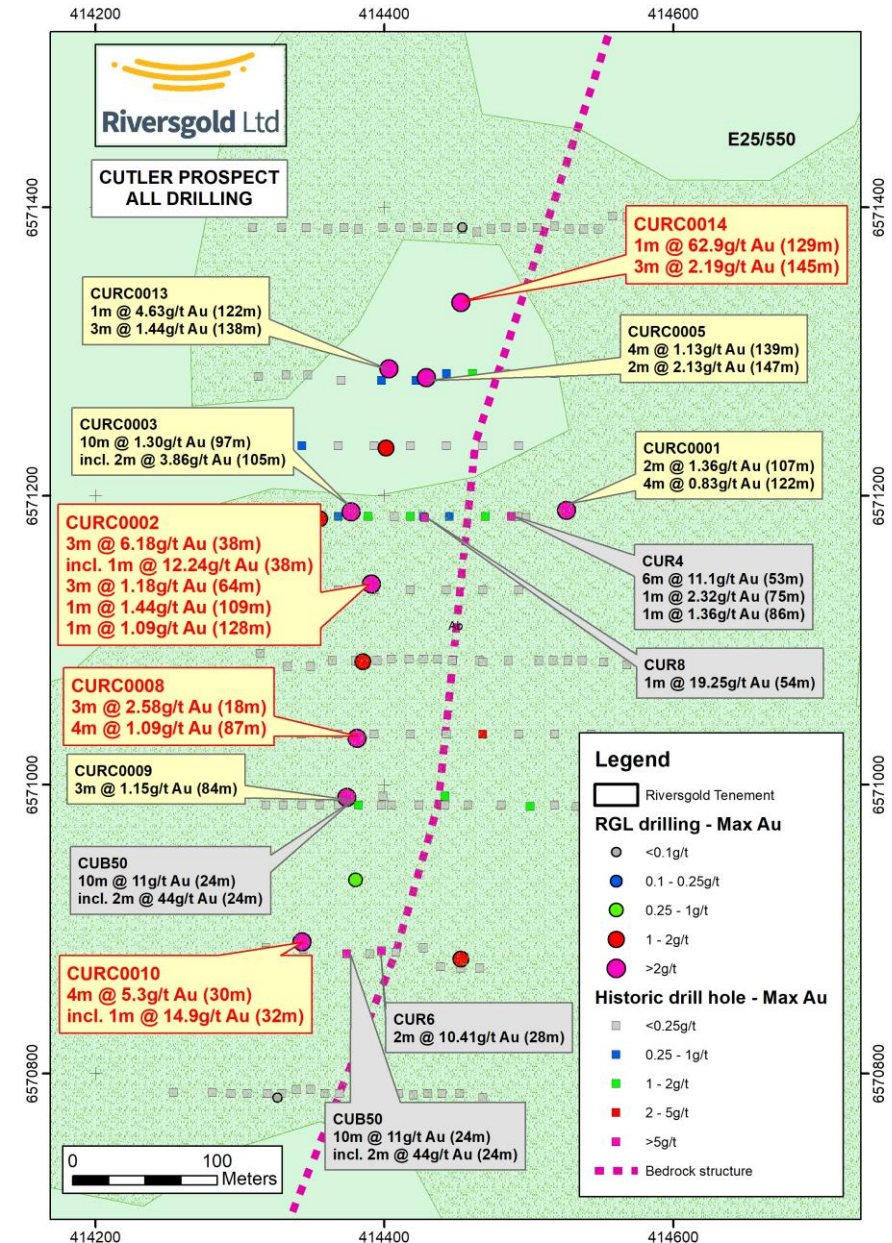
Ella Prospect – open at depth



Cutler (RGL 100%)

- Hosted in mafic rocks – west of Randall Fault
- Numerous high-grade oxide results:
 - 10m @ 11.0g/t Au
 - 4m @ 5.3g/t Au
 - 3m @ 6.18g/t Au
 - 6m @ 11.1g/t Au
 - 1m @ 19.0g/t Au
- Primary mineralisation over >500m strike:
 - 1m @ 62.9g/t Au – open down plunge
 - 2m @ 3.9g/t Au
 - 3m @ 2.2g/t Au
 - 10m @ 1.3g/t Au
- Follow-up RC/Diamond drilling planned

*See ASX Releases dated 26 February, 8th June , 25th July 2018



Farr-Jones/Cutler – an emerging new gold camp?

Next steps:

- Infill aircore drilling of **Farr-Jones** corridor
- Extend soil survey along strike
- Test soil anomalies with aircore drilling to refine future RC drill targets
- Deeper RC holes on existing discoveries:
 - **Farr-Jones/North Farr-Jones**
 - **Eales**
 - **Little**
 - **Cutler**
 - **Ella** (pending permitting)
- Diamond drilling at **Farr-Jones** and **Cutler** to confirm structural orientation

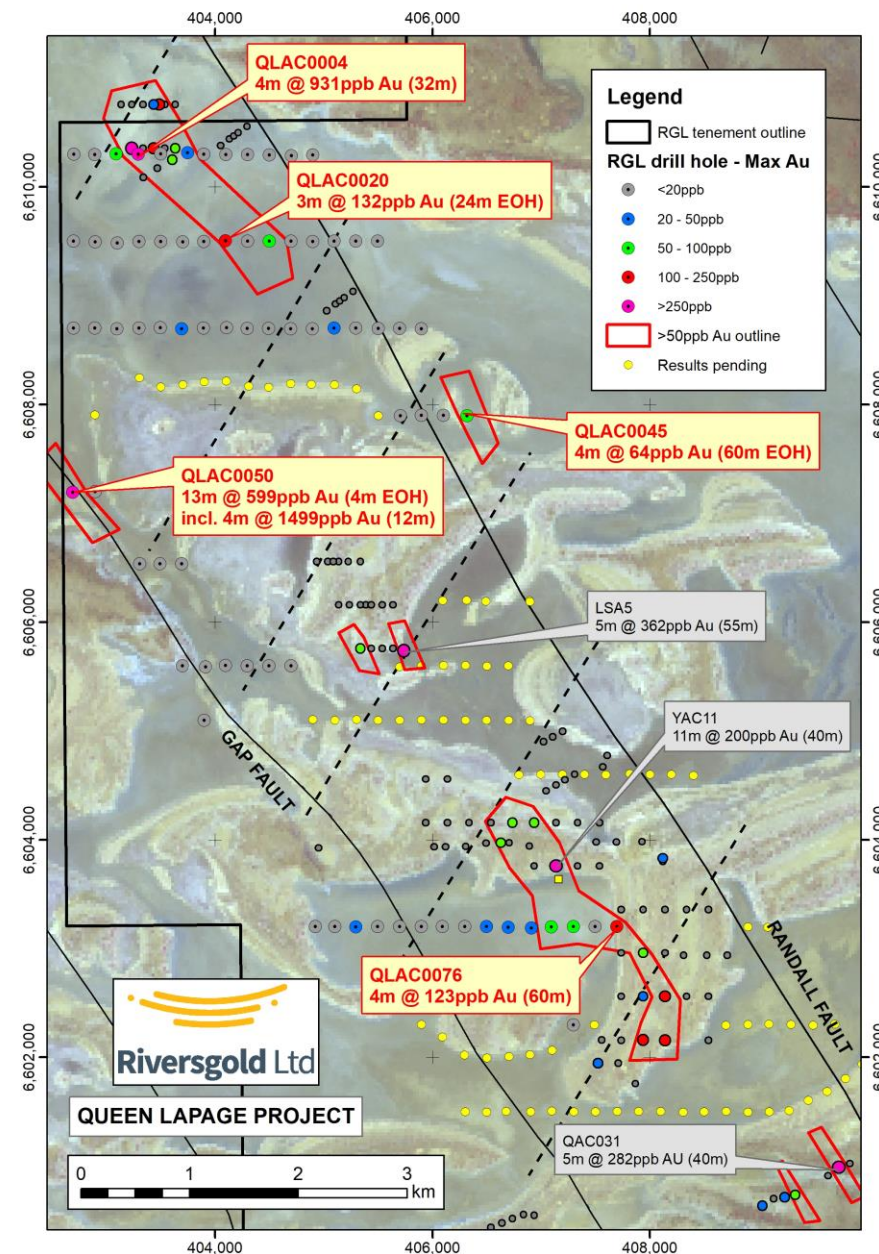


Queen Lapage (RGL 80%)

Very large target with potential for multiple deposits:

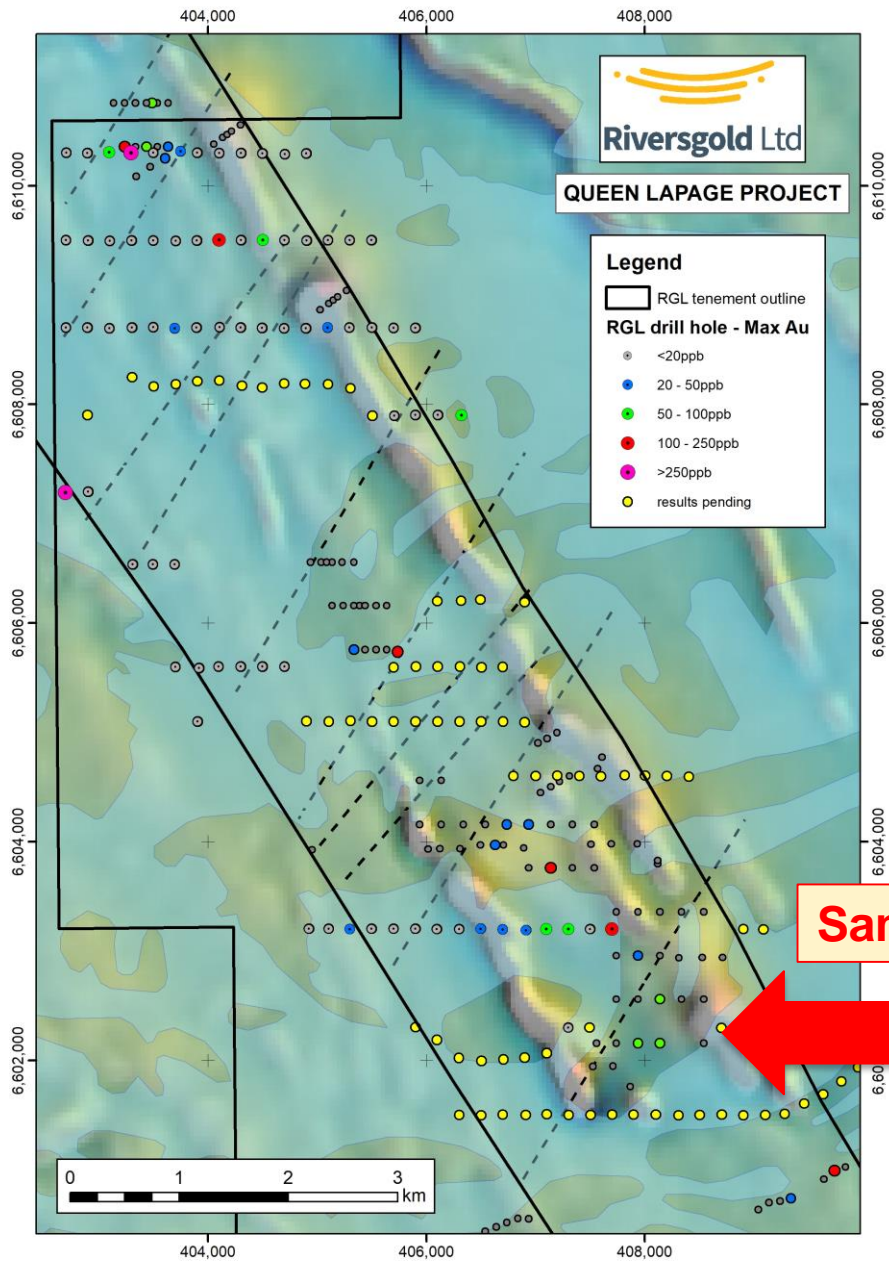
- 11km of Randall Fault under Lake Yindarlgooda
- Major regional structure cross-cut by numerous late NE-trending brittle faults
- Shallow historical drilling on islands within lake
- **First-pass aircore lake drilling results:**
 - 13m @ 599ppb Au (incl. 4m @ 1,499ppb Au)
 - 4m @ 931ppb Au
 - 3m @ 132ppb Au (EOH)
 - 4m @ 123ppb Au
- **Semi continuous gold anomalism over 10km**
- Follow-up aircore drilling planned

See ASX Release dated 14 February 2019



Queen Lapage Lake drilling – January/February 2019



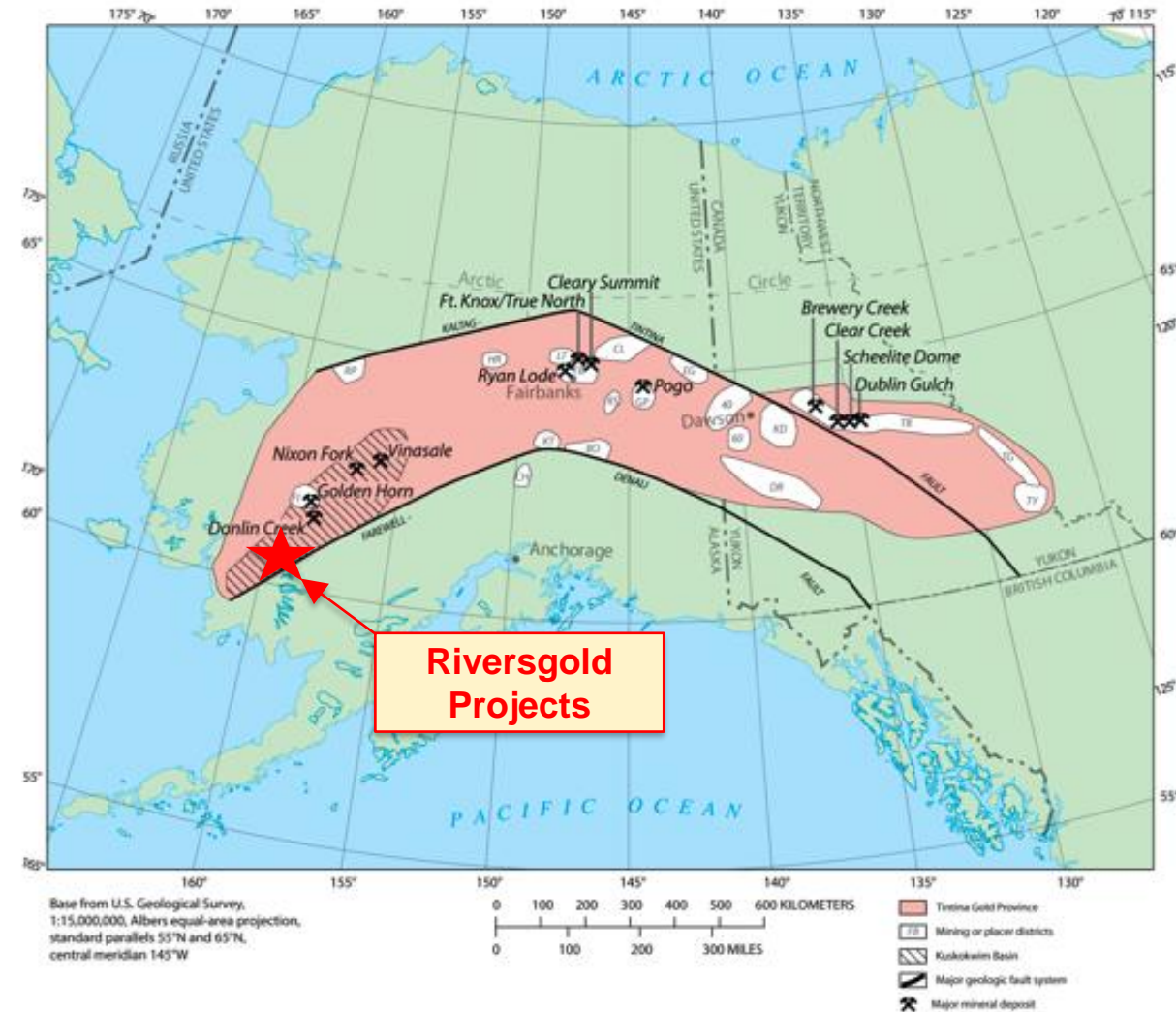


Same scale

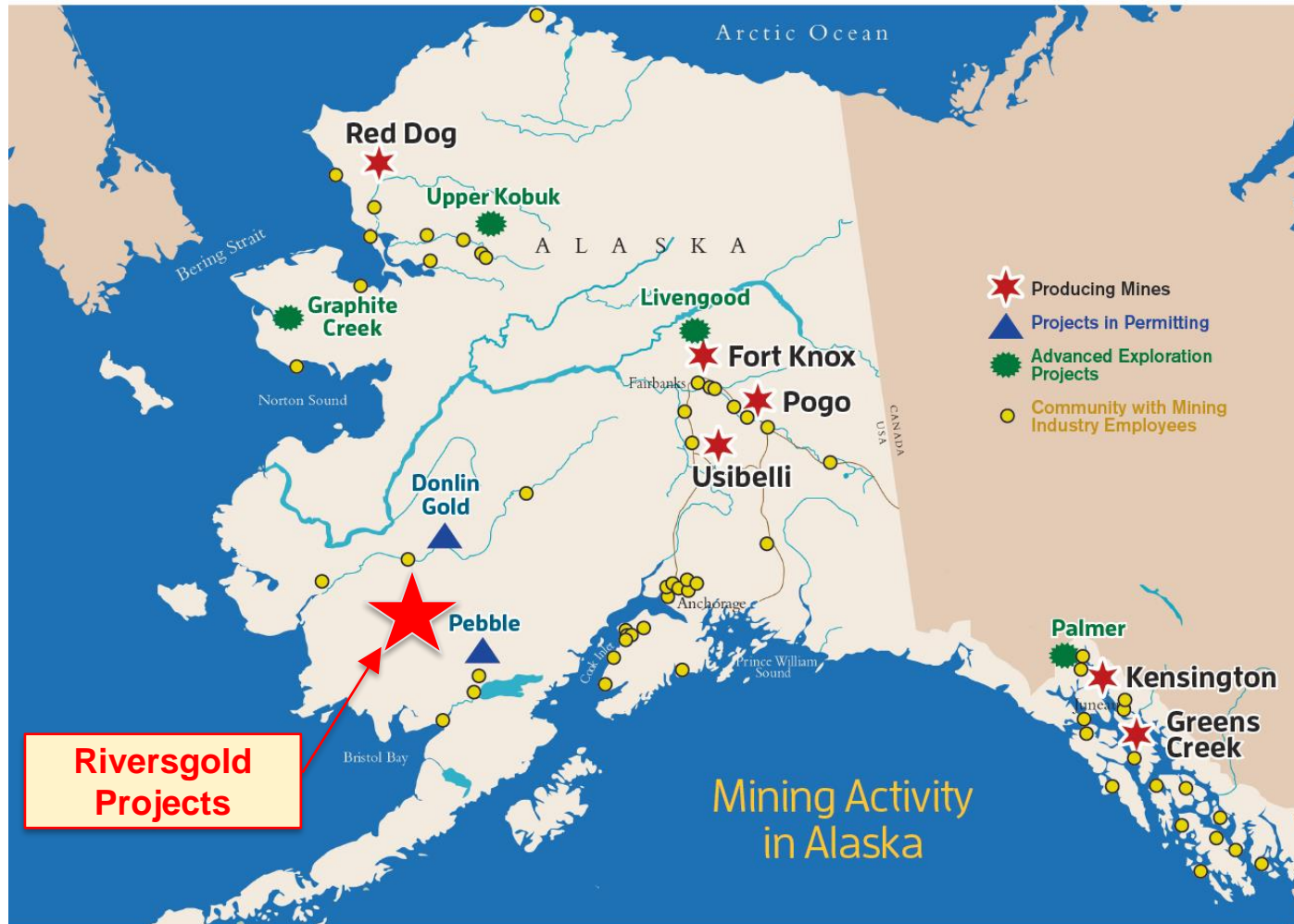


SW Alaska Gold Projects

- ASX first mover in SW Alaska, USA
- Looking for a large Intrusion-Related Gold (IRG) deposit in the Tintina Gold Province – host to multiple large gold deposits:
 - Donlin Creek (45Moz Resource)
 - Pogo (4.2Moz Resource)
 - Fort Knox/True North (7Moz produced)
 - Livengood (15.5Moz Resource)
 - Yukon deposits (7Moz and growing)
- 100% owned State mining claims
- Geology/structural setting similar to giant 45Moz Donlin Creek gold deposit



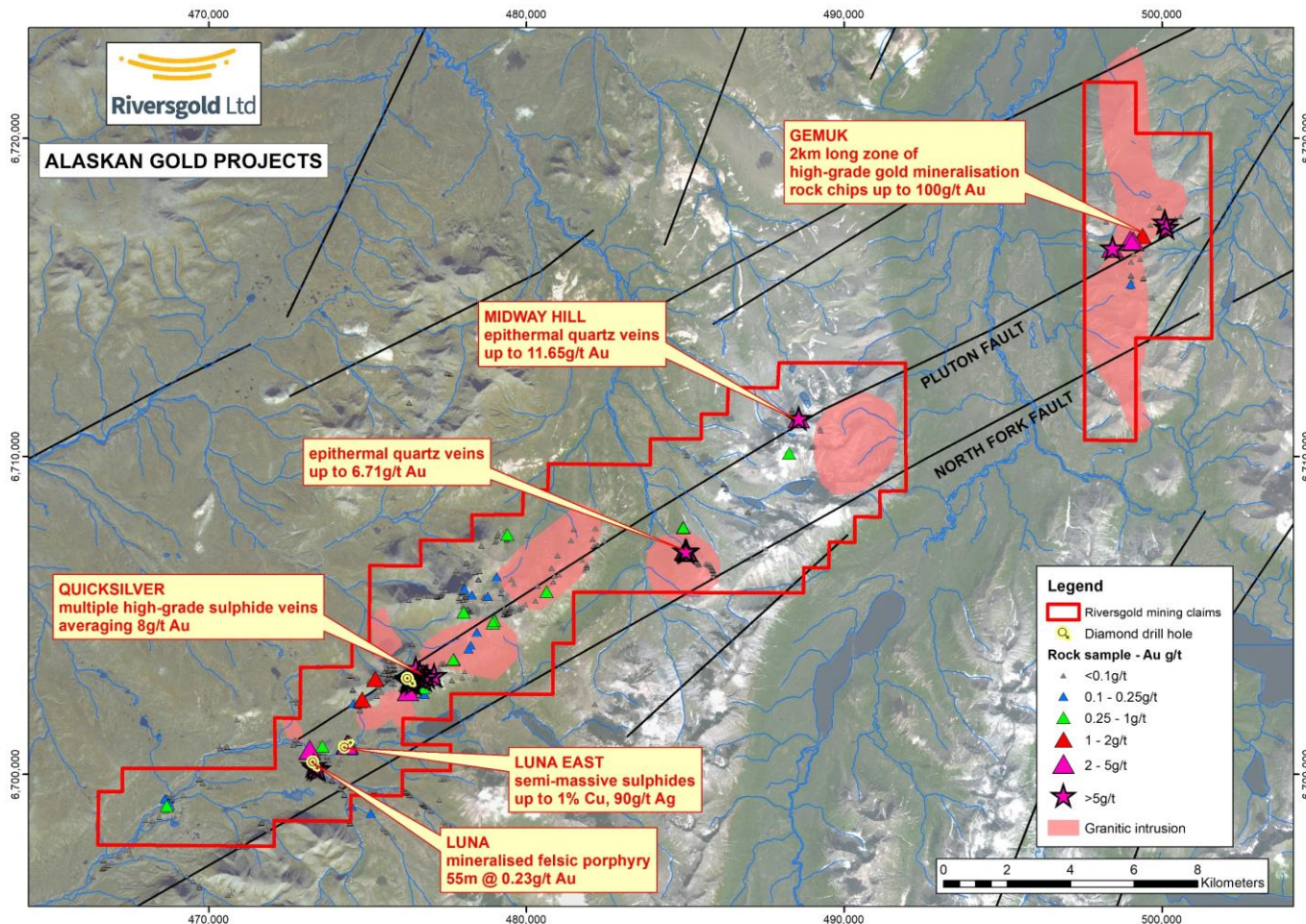
The Alaskan opportunity



- ✓ World Class mineral endowment
 - 2.5% of world's gold reserves
 - 40% of USA's gold resources
 - 2nd largest producer in USA
- ✓ Stable State/Federal governments
- ✓ Well-established mining culture
- ✓ Supportive Native Corporations
- ✓ Well understood permitting process

Consistently ranks in top 10 for Fraser Institute Global Mining Survey

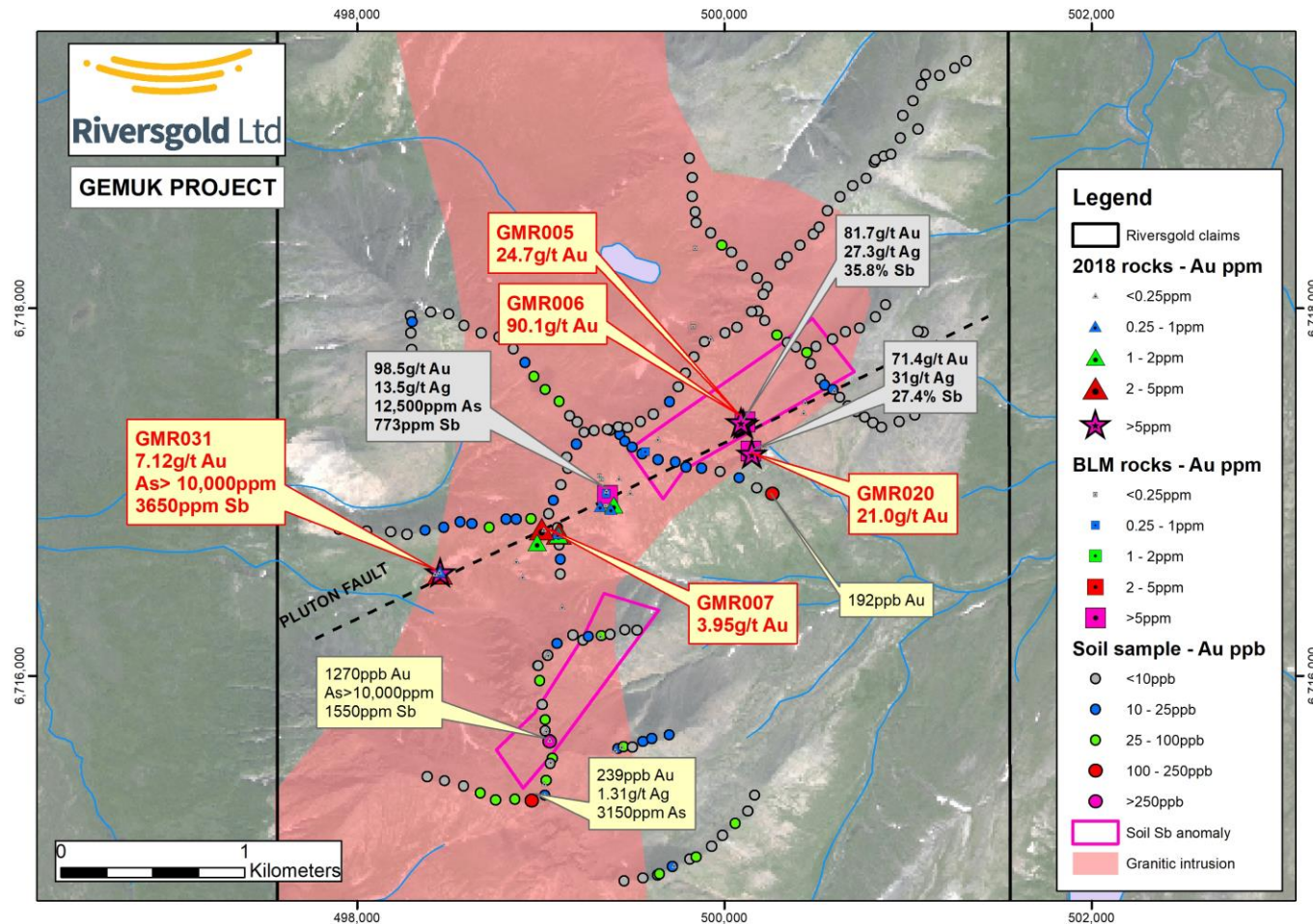
High-grade gold discoveries along North Fork Fault



- 40km long second-order splay fault
- Outcropping high-grade gold mineralisation at:
 - Luna
 - Quicksilver
 - Midway Hill
 - Gemuk
- New claims staked at **Gemuk** and **Midway**
- Limited drilling to date

**See Appendix for ASX Announcements*

Gemuk – high-grade gold mineralisation over 2km



- 2km long zone of high-grade gold mineralisation within “Pluton Fault”
- Multiple high-grade rock chip results
 - up to 100g/t Au
- Soil sampling highlights potential second structure
 - 1.27g/t Au in soil sample
 - Coincident **Au-Sb** anomalism

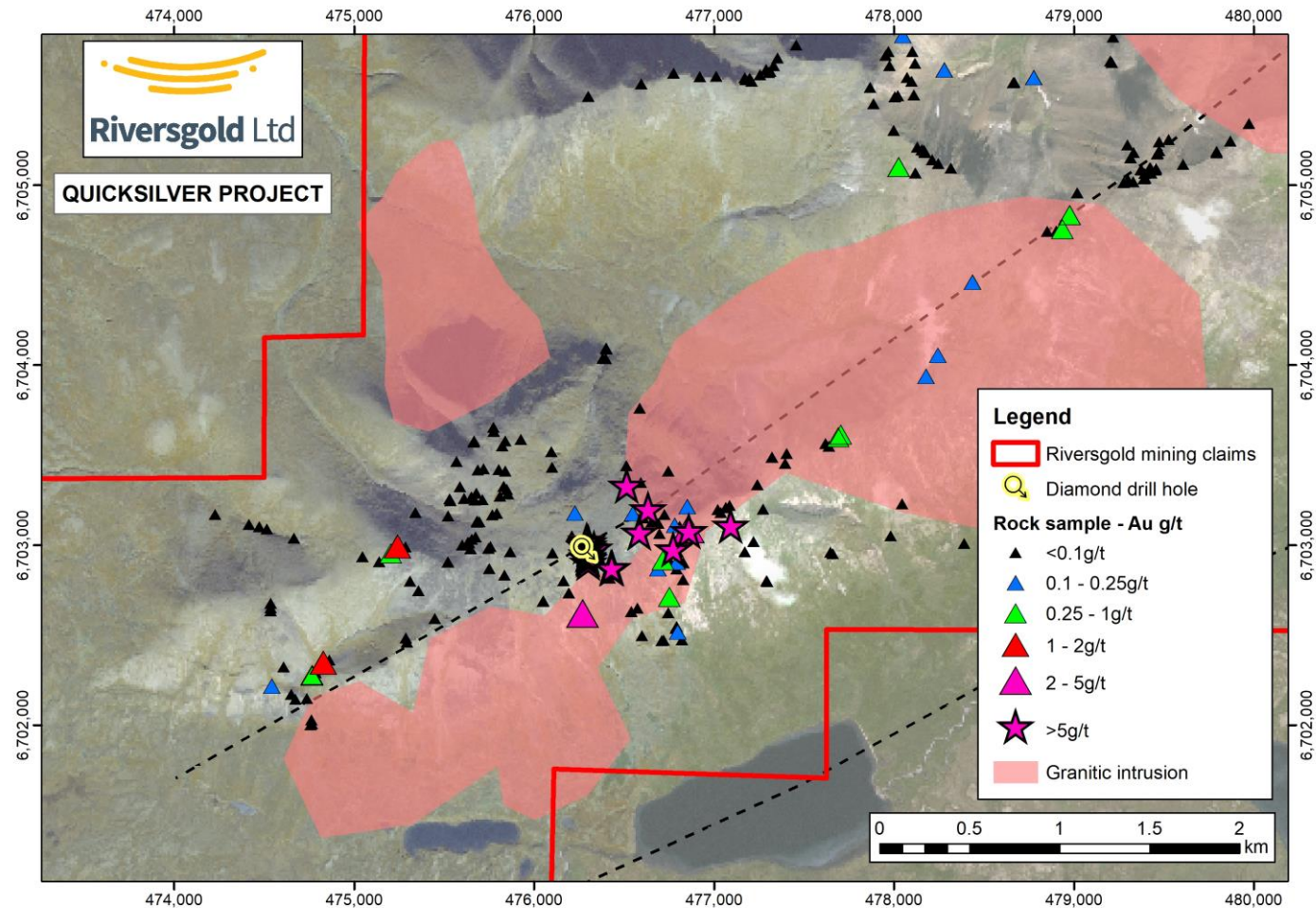
Midway Hill – new high-grade gold discovery



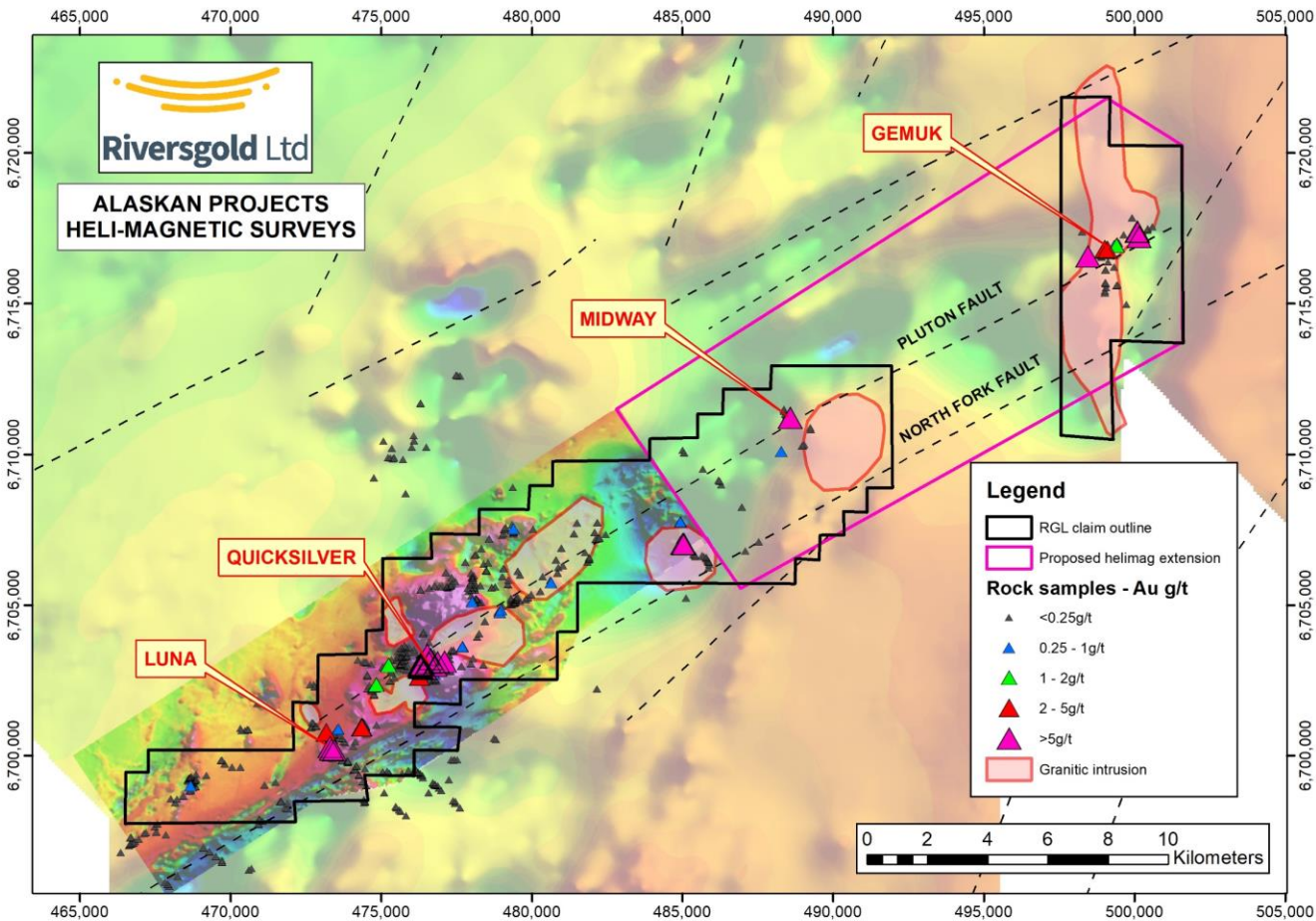
- Discovery of new **high-grade epithermal veins** between Quicksilver and Gemuk
- Rock chip results up to **11.65g/t Au**



Quicksilver – multiple sulphide veins averaging 8g/t Au



Extension of detailed helimag survey planned

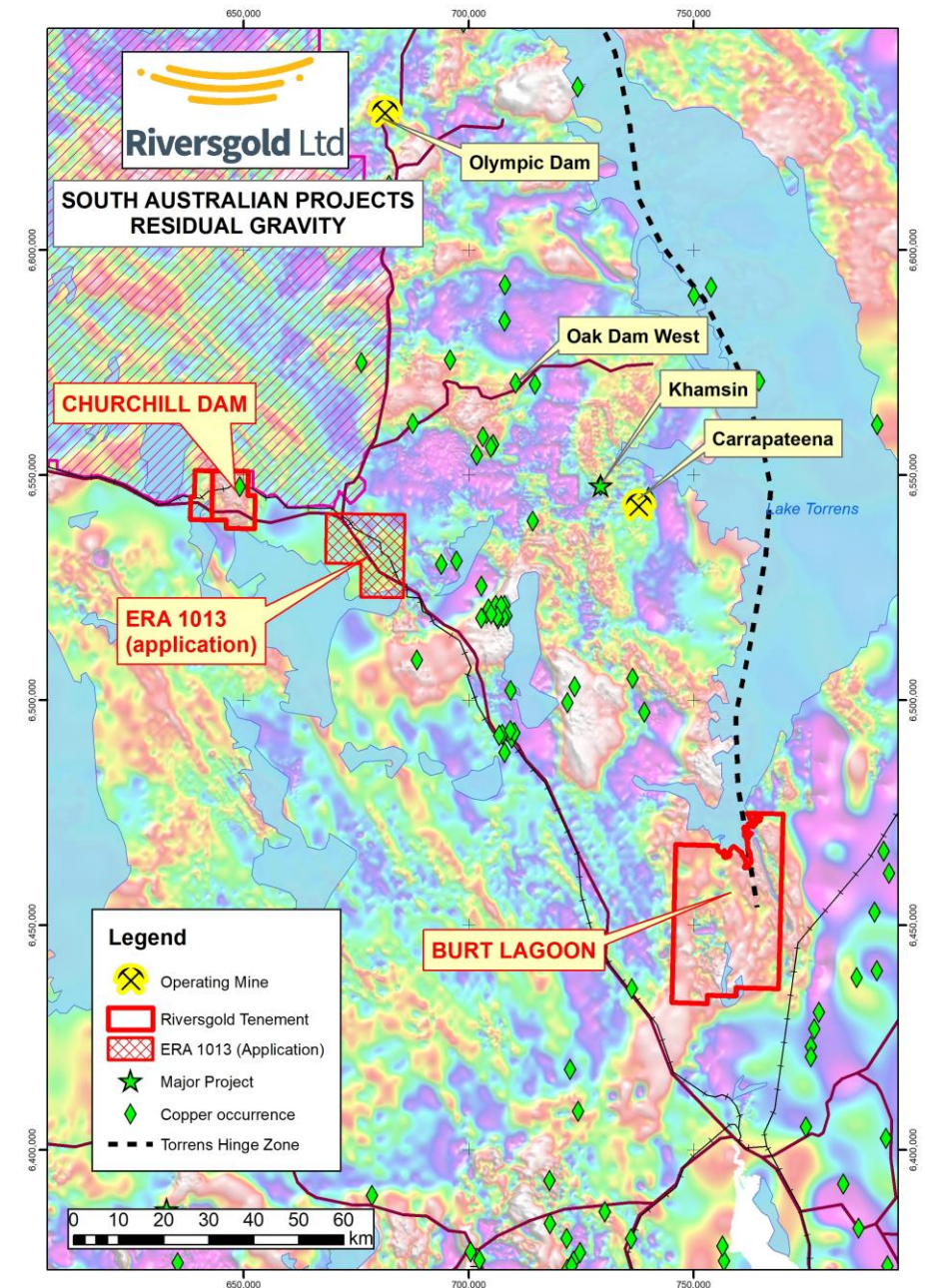


Plans to extend 100m-spaced helimag survey to cover new **Midway Hill** and **Gemuk** claims



South Australian IOCG Projects

- Three projects in the **Olympic Copper-Gold Province** of South Australia, host to:
 - Olympic Dam
 - Prominent Hill
 - Carrapateena/Khamsin
- **“Oak Dam West”** drilling results reinforce potential for further IOCG discoveries
- **Churchill Dam**
 - Large gravity anomaly mostly untested
 - Approvals received for diamond drilling
- **Burt Lagoon**
 - Gravity/geochem anomalies in Torrens Hinge Zone
- **Woomera ERA1013** (application)
 - Multiple poorly defined/untested gravity anomalies



Riversgold – summary

- Hit the ground running after listing in October 2017
- Highly experienced Board and Management team
- **Multiple new gold discoveries in two world-class regions:**
 - **Eastern Goldfields of Western Australia**
 - **Tintina Gold Province of SW Alaska, USA**
- Drilling has defined indications of multiple new gold deposits over at least 2.5km at **Farr-Jones** and **Cutler**
- Recent aircore drilling has outlined multiple very large new gold targets at **Queen Lapage** to be followed up
- Looking to unlock additional shareholder value from our highly prospective projects in **Alaska** and **South Australia**
- **Significant shareholder upside from further success**



Aircore drilling on Lake Yindarlgooda, Jan 2019



Riversgold Ltd

www.riversgold.com.au



Competent Person Statement

The information in this document that relates to Exploration Results is based on information compiled by Mr Allan Kelly, a Competent Person who is a Member of The Australian Institute of Geoscientists. Mr Kelly is the Managing Director and CEO of Riversgold Ltd. He is a full time employee of Riversgold Ltd and holds shares and options in the Company.

Mr Kelly has sufficient experience which is relevant to the style of mineralisation and type of deposit under consideration and to the activity which he is undertaking to qualify as a Competent Person as defined in the 2012 Edition of the 'Australasian Code for Reporting of Exploration Results, Mineral Resources and Ore Reserves'. Mr Kelly consents to the inclusion in the presentation of the matters based on his information in the form and context in which it appears.

- Information on historical results for the Australian, Alaskan and Cambodian projects, including Table 1 information, is contained in the "Independent Geologists Report" in the Riversgold Replacement Prospectus dated 11 August 2017.
- Information on historical results for the Gemuk Mountain Project , including Table 1 information, is contained in the ASX Release dated 1 February 2018.
- Information on the Cutler Project , including Table 1 information, is contained in the ASX Releases dated 26 February 2018 and 8 June 2018;
- Information on the Farr-Jones Project , including Table 1 information, is contained in the ASX Releases dated 2 July, 13 August, 11 September, 17 October, 23 October 26 November 2018 and 16 January 2019;
- Information on results from the Queen Lapage Project, including Table 1 information, is included in the ASX releases dated 14 February 2019;
- Information on results from the Yilgani Project, including Table 1 information, is included in the ASX releases dated 20 November 2017, 7 February 2018, 28 March 2018 and 26 April 2018;
- Information on results from the 2018 Alaskan fieldwork programmes, including Table 1 information, is included in the ASX Releases dated 6 July, 20 July, 17 August, 23 August, 28 August, 26 September, 27 September, 8 October, 11 October and 12 October 2018.

The Company confirms that it is not aware of any new information or data that materially affects the information in the original market announcements, and that the form and context in which the Competent Persons findings are presented have not been materially modified from the original market announcements.