



LATIN RESOURCES LIMITED
ACN: 131 405 144

Unit 3, 32 Harrogate Street
West Leederville, Western Australia,
6007.

P 08 6117 4798
E info@latinresources.com.au
W www.latinresources.com.au

27 February 2019

Latin Resources Limited (ASX: LRS) (“Latin” or “the Company”) provides the following update on its San Luis projects located in Argentina, South America.

San Luis

Last week the Chairman and Managing Director of the Company met with senior officials in the Mines Department (Mining Directorate) of the province of San Luis to discuss the progress of the Company's projects in the province.

A presentation in Spanish was given to the senior staff of the Mining Directorate which is attached (with an English translation for reference). There continues to be fruitful and positive discussions based around the signed co-operation agreement between Latin and the San Luis province in December 2018.

Further updates will be provided as the discussions continue along the required pathway and process being followed to obtain the necessary drill permits to enable the Company to commence its exploration program in San Luis.

For further information please contact:

Chris Gale
Managing Director
Latin Resources Limited
+61 8 6117 4798

About Latin Resources

Latin Resources Limited is a mineral exploration company focused on creating shareholder wealth through the identification and definition of mineral resources in Latin America. The Company has secured over 173,000 hectares of exploration concessions in the lithium pegmatite districts of Catamarca and San Luis., Argentina.

The company also has a portfolio of projects in Peru and is actively progressing its Iron Oxide-Copper-Gold and Copper Porphyry projects in the Southern region of Ilo with its joint venture partner First Quantum Minerals Ltd.

Latin Resources recently divested its other Peruvian copper projects into Canadian listed company Westminster Resources (TSX-V; WMR) and is now Westminster's largest shareholder.

info@latinresources.com.au
www.latinresources.com.au



LATIN RESOURCES
LIMITED

Latin Resources Limited (ASX Code: LRS)

Latin Resources strategy is to develop its projects to the point where we can attract quality JV partners to invest and then develop.



Mineral exploration and development company with Copper projects in Peru and Lithium – Cobalt projects in Argentina with proven record of developing projects



Over 9 years of exploration work and \$25m spent to date in South America



Track record of identifying and developing projects with quality Joint Venture partners



Major Joint Venture in progress with First Quantum in Peru on copper project . Ilo Este and Ilo Sur up for Sale .



Over 150,000 hectares of secured lithium pegmatite concessions in Argentina development has commenced



Strong Management team



Empresa de Exploración y Desarrollo enfocada en proyectos de Cobre en Perú, y en Proyectos de Litio- Cobalto en Argentina con experiencia comprobada en el sector.



9 años de experiencia en trabajos de exploración e inversiones de \$25m en Sudamerica



Experiencia comprobada en reconocimiento y desarrollo de proyectos con socios reconocidos y calificados.



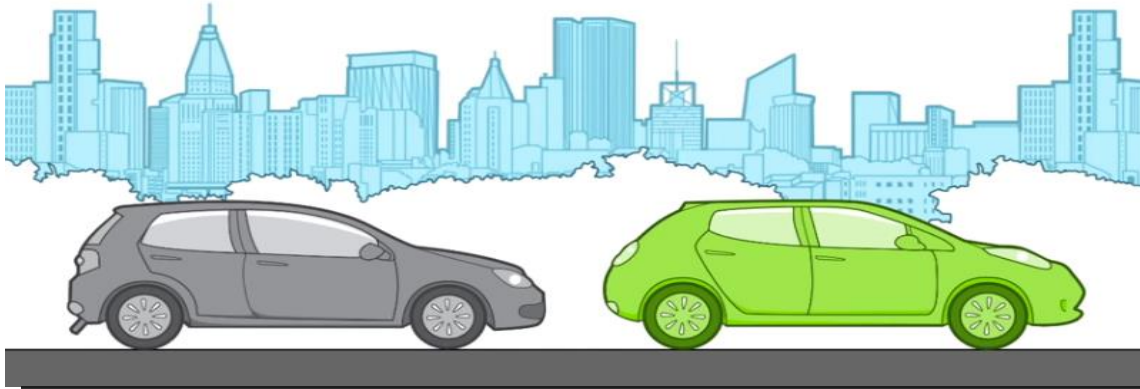
150,000 hectáreas en proceso de concesión en Argentina para exploración de litio en pegmatitas.



Equipo de trabajo experimentado

THE ELECTRIC VEHICLE REVOLUTION

50% REDUCTION



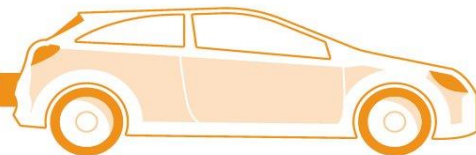
- *Electric Vehicles use energy stored in batteries to power electric motor instead of gasoline*
- *The batteries are made of Lithium , Cobalt and Nickel*
- *The electric vehicle has no fuel emissions therefore reducing greenhouse gases .*
- *There will increasing demand for lithium batteries due to the large increase in electric cars and storage*

WHAT IF All new cars were electric?



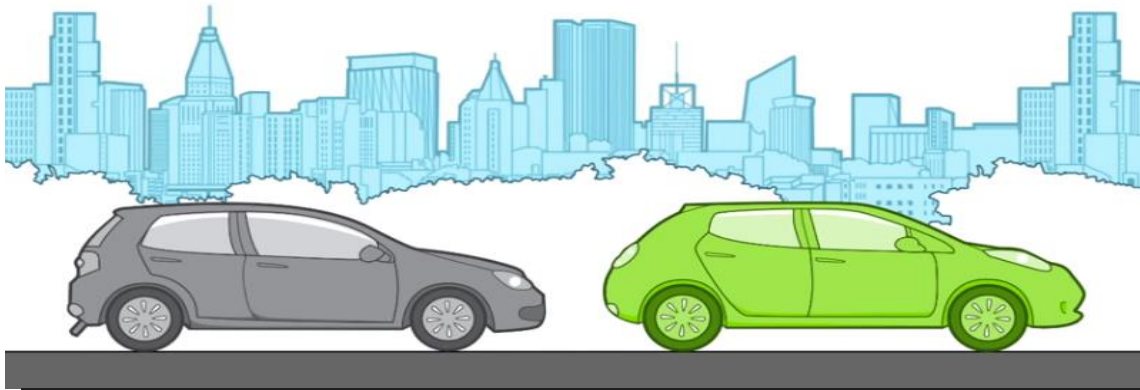
By 2040, electric cars would make up **90% of the world's 2 billion cars**

Saving*
11 billion barrels of oil a year or almost half of annual global production
and
4.7 billion tonnes of CO₂



AUTOMOVILES ELECTRICOS: LA REVOLUCIÓN

50% REDUCTION



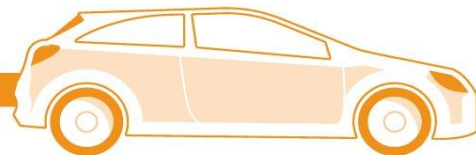
- *Los vehículos eléctricos utilizan energía contenida en baterías que permiten el funcionamiento de los motores, en lugar del uso de combustible.*
- *Las baterías se fabrican con litio, cobalto y níquel.*
- *El vehículo eléctrico no emite gases, reduciendo el efecto invernadero.*
- *El incremento del uso de autos eléctricos implicará una demanda creciente de baterías de litio.*

WHAT IF All new cars were electric?



By 2040, electric cars would make up **90% of the world's 2 billion cars**

Saving*
11 billion barrels of oil a year or almost half of annual global production
and
4.7 billion tonnes of CO₂



SAN LUIS RENEWABLE ENERGY SOURCE



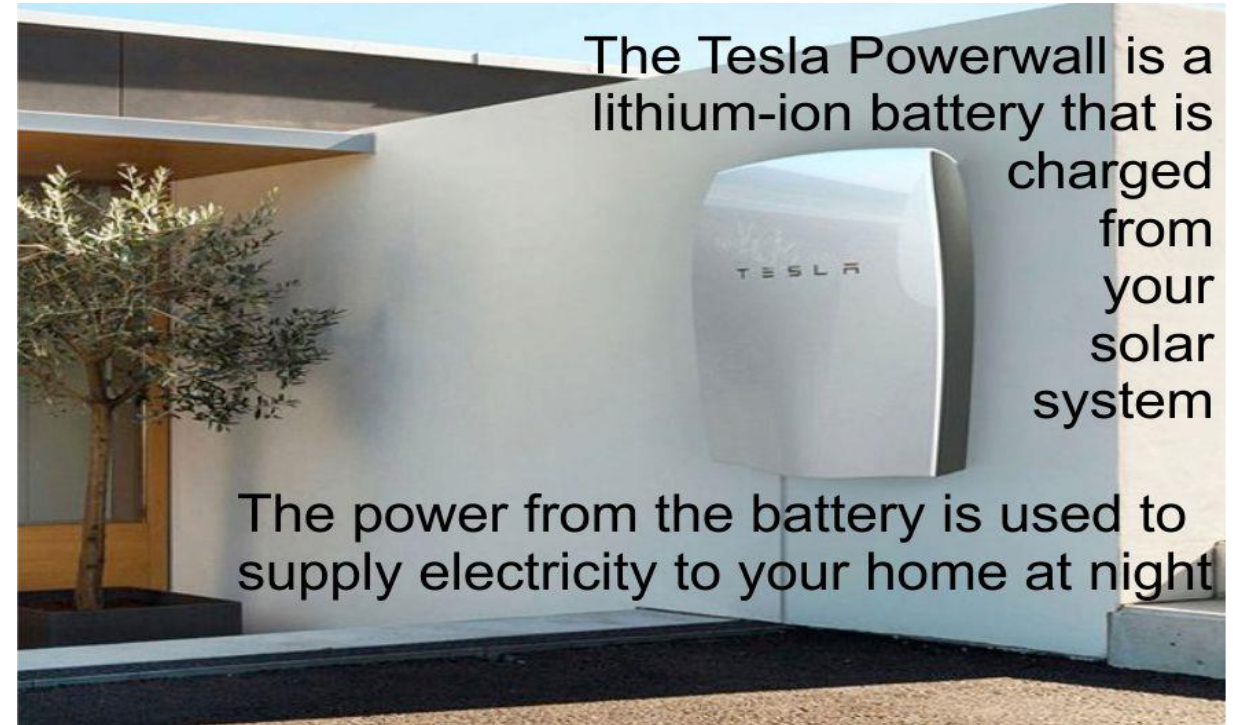
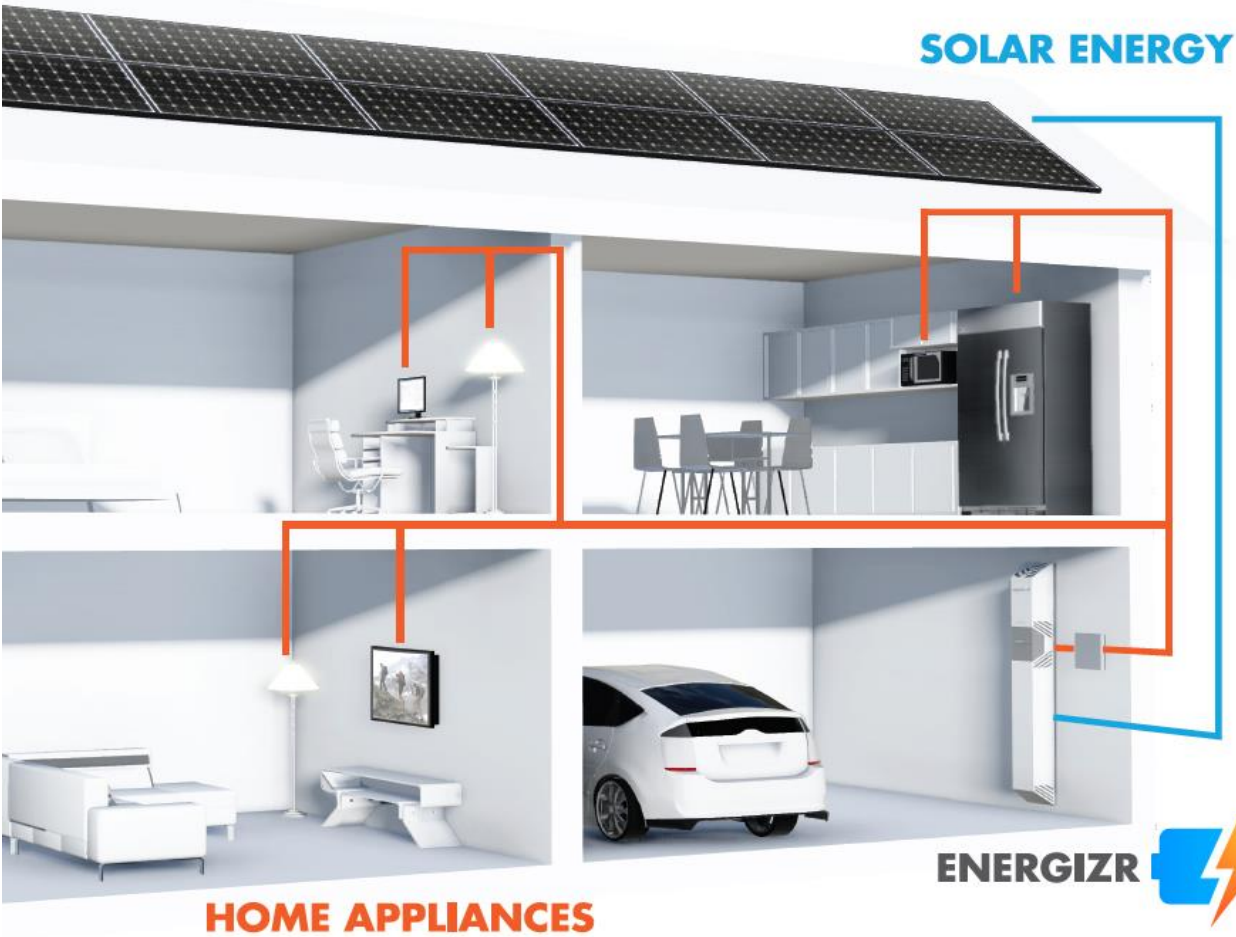
- *San Luis could create its own energy source via solar or wind power (or both)*
- *Lithium batteries could provide energy storage supplied by wind or solar power*
- *Local supplied lithium from Spodumene could turn San Luis into a true green province*

SAN LUIS: FUENTE DE ENERGÍA RENOVABLE



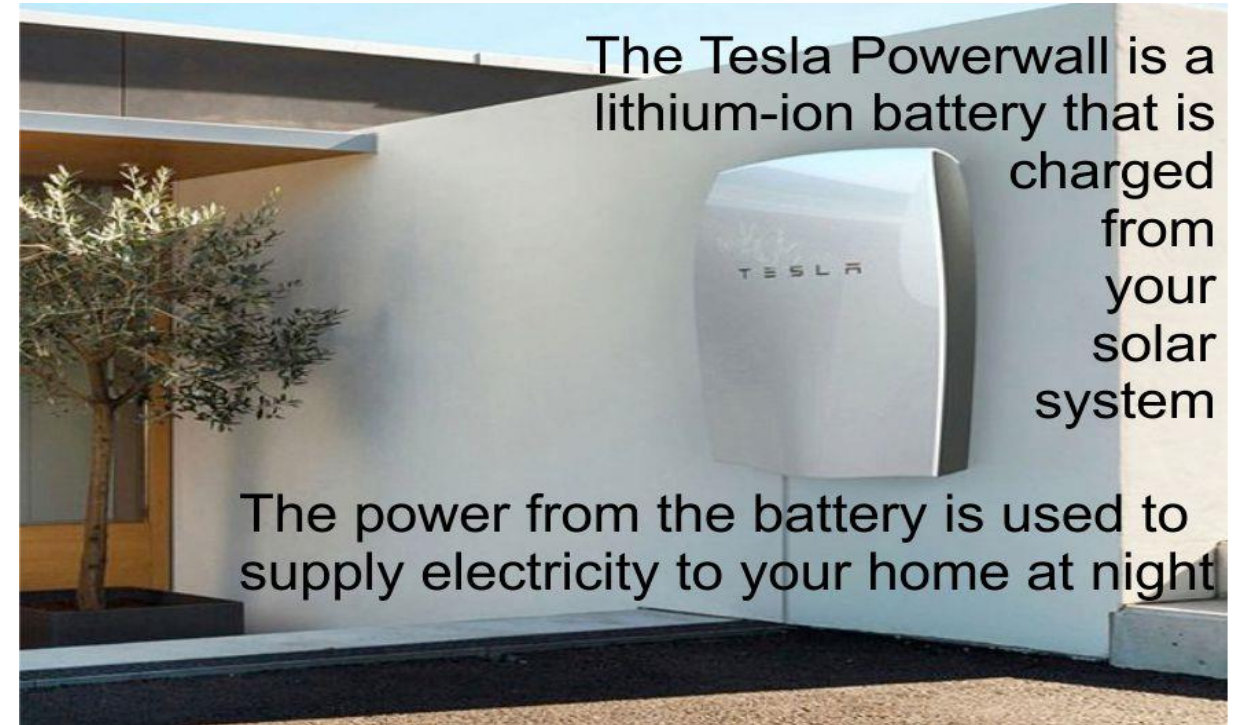
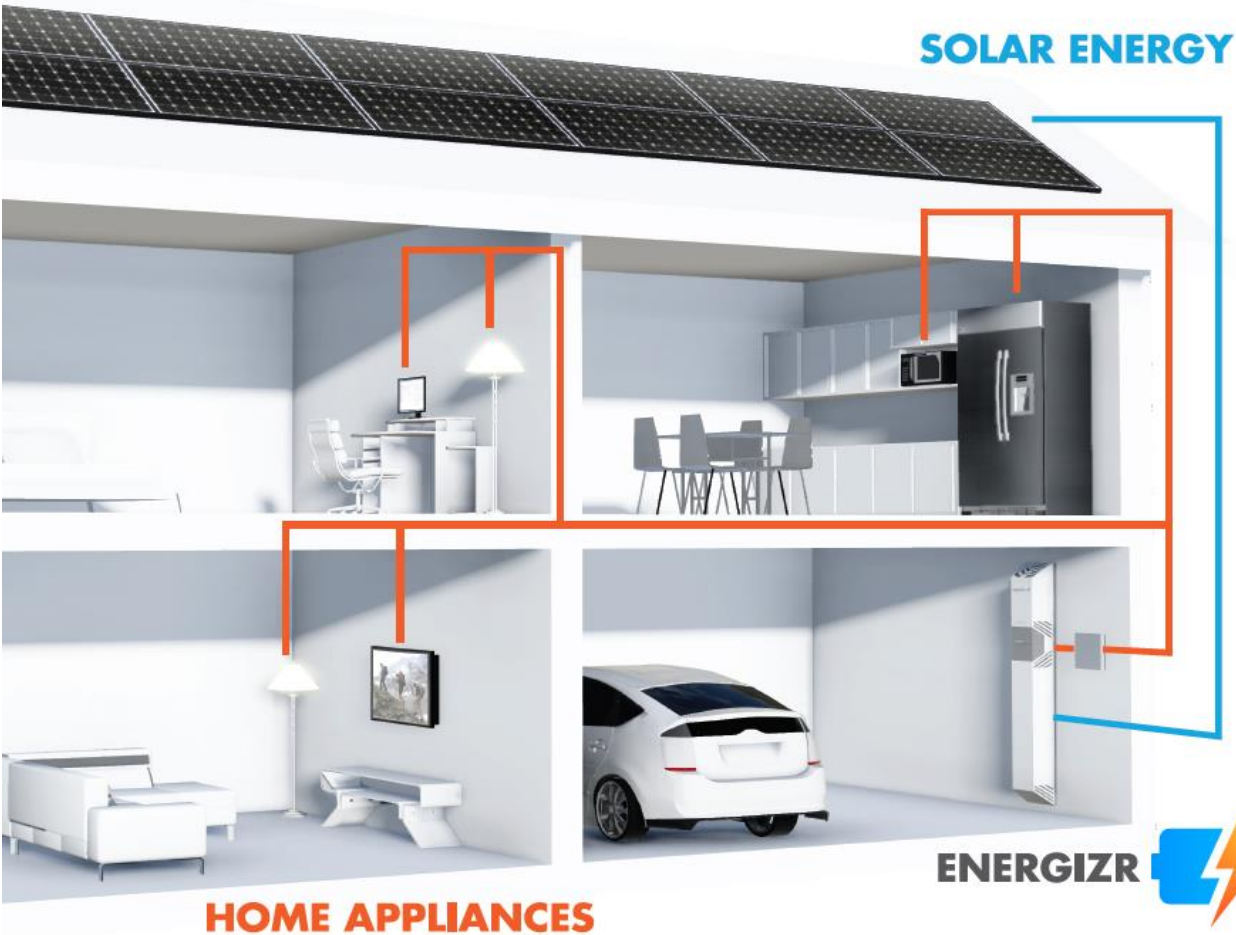
- *San Luis puede generar su propia fuente de energía: solar y/o eólica*
- *Las baterías de litio pueden almacenar la energía eólica o solar.*
- *El Litio obtenido de espodumeno colabora en el desarrollo ambiental de la provincia de San Luis.*

SAN LUIS RENEWABLE ENERGY SOURCE



- *Homes with solar panels can provide power for electric storage for all home appliances and electric cars*

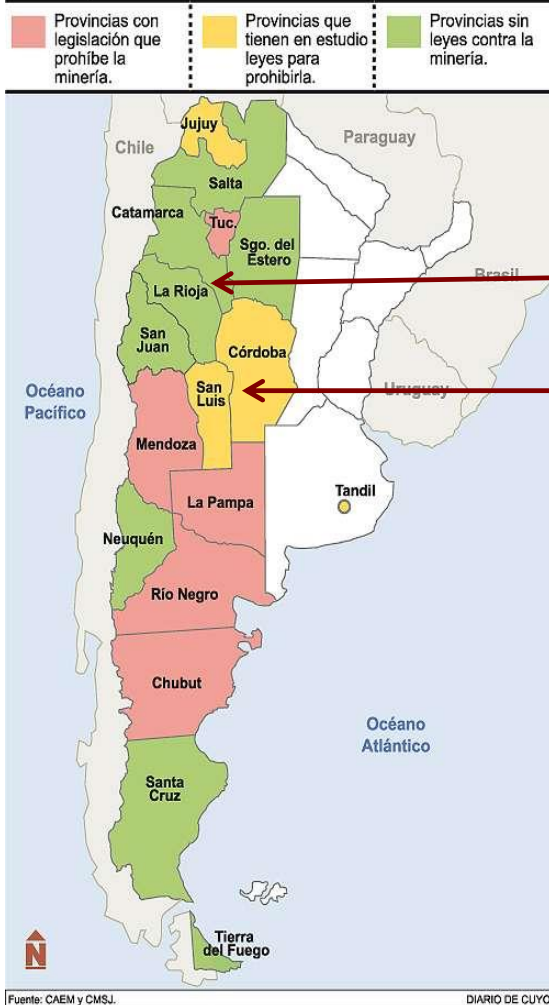
SAN LUIS FUENTE DE ENERGIA RENOVABLE



- *Los Hogares con paneles solares brindan energía para almacenar y utilizar en artefactos y en automóviles eléctricos.*

Latin Resources Lithium Projects – Argentina

El mapa minero



Catamarca Lithium pegmatite Projects – over 70,000 hectares of concessions

San Luis Lithium pegmatite Projects - over 140,000 hectares of concessions

Latin Resources controls over 200,000 hectares of prime , high grade lithium concessions in Argentina .

Recursos Latinos: Proyectos de Litio en Argentina

El mapa minero

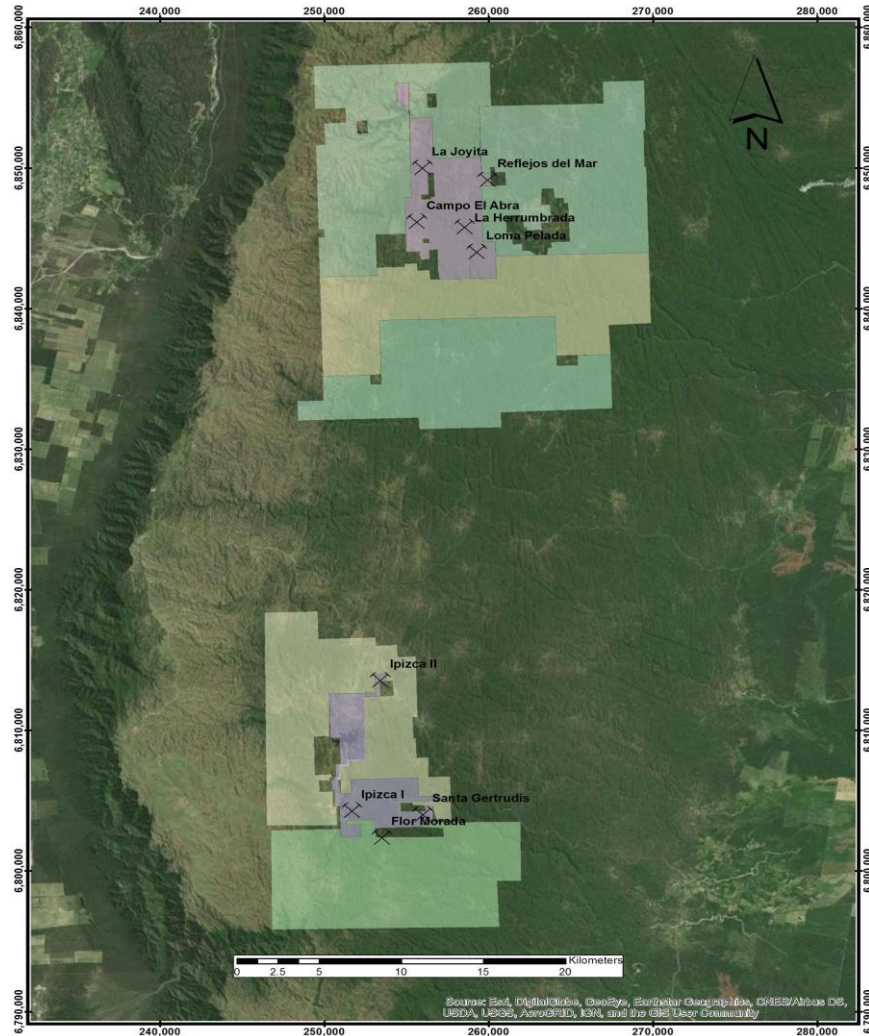


Catamarca. Litio en Pegmatita– 70,000 hectáreas aprox.

San Luis. Litio en Pegmatita- 140,000 hectáreas aprox

Recursos Latinos tiene 200,000 hectáreas en concesión en Argentina .

Catamarca Lithium Concessions

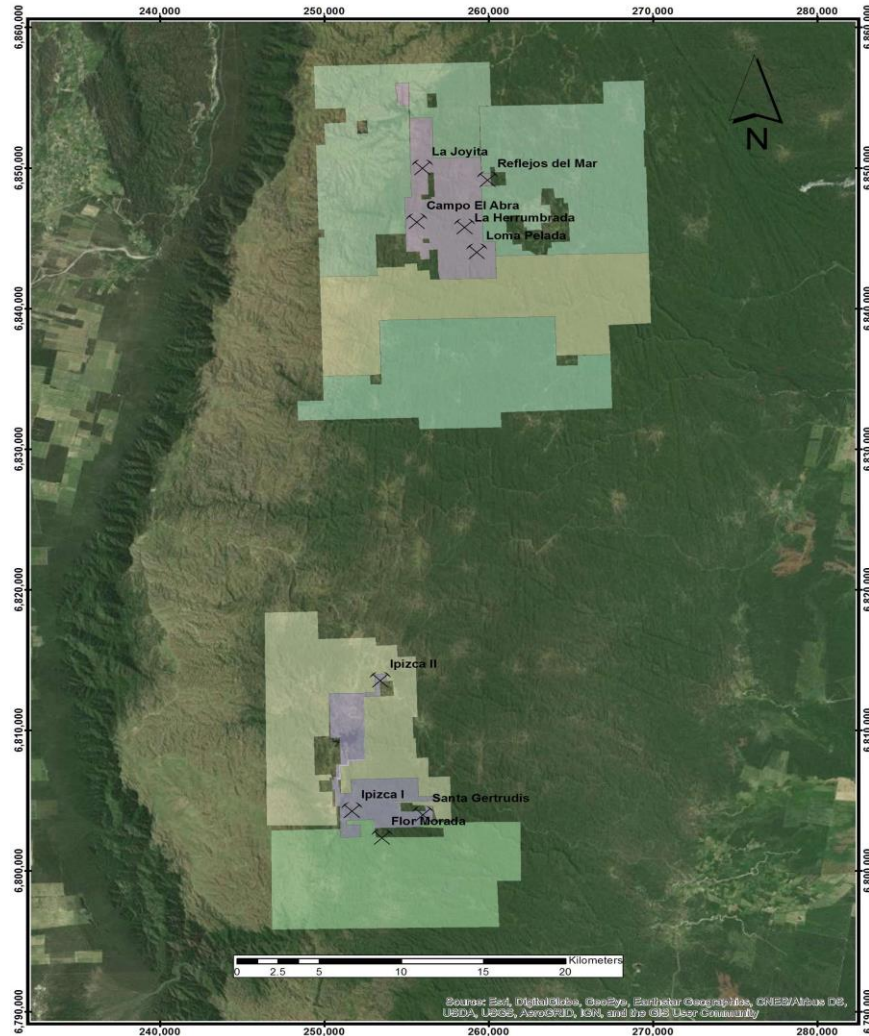


Latin Resources holds a large lithium pegmatite land package in Catamarca with over 70,000 hectares of concessions.

Drilling in 2nd Qtr 2017 - Intercepts include:

- ***3m @ 2.98% Li₂O***
- ***5.2m @ 1.62% Li₂O***
- ***6m @ 2.40% Li₂O***
- ***7m @ 2.17% Li₂O***

Concesiones en Catamarca

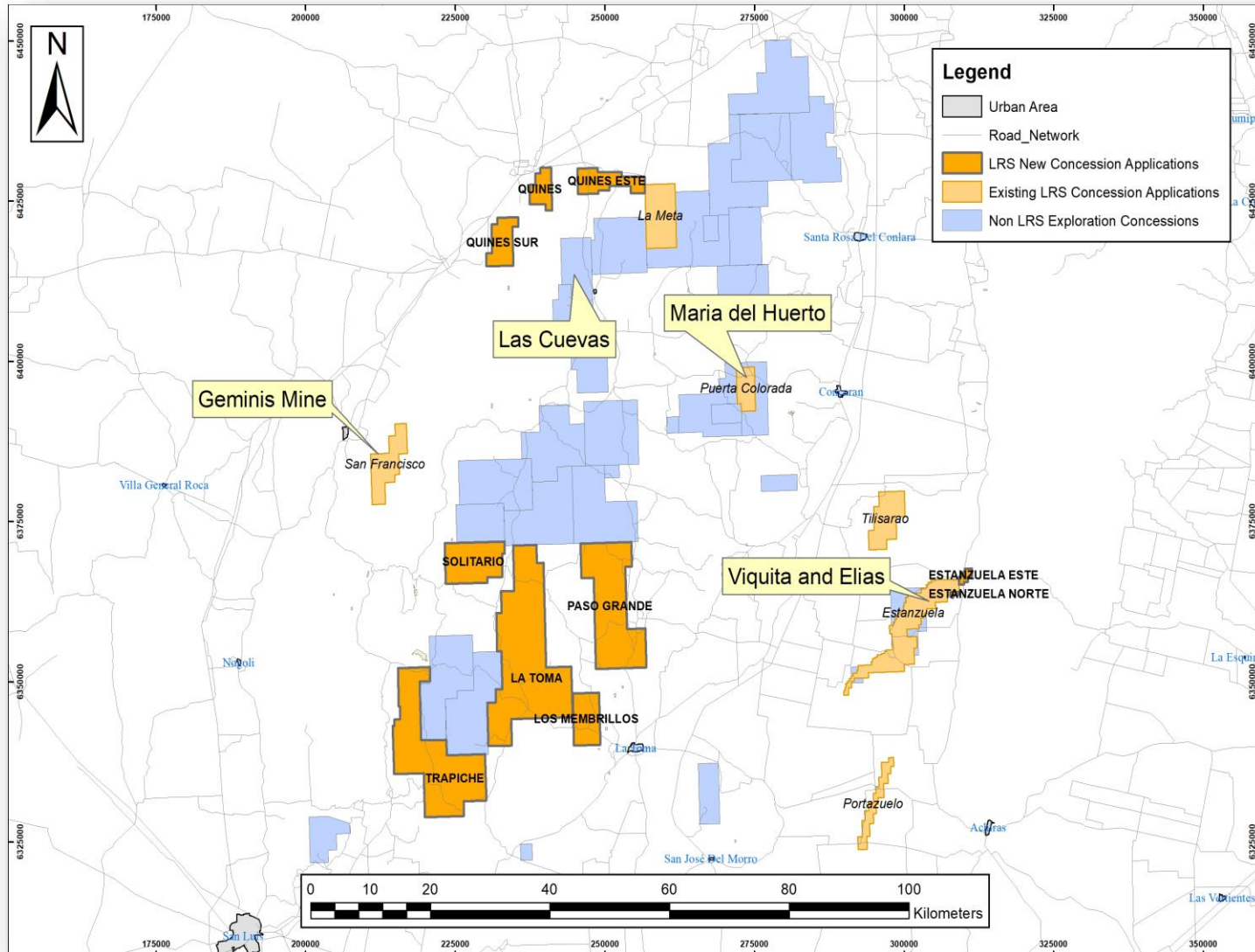


Recursos Latinos tiene áreas en concesión en la provincia de Catamarca de litio en pegmatita de una superficie aproximada de 70,000 ha

Intercepciones de Perforación 2^{do} Sem. 2017

- ***3m @ 2.98% Li₂O***
- ***5.2m @ 1.62% Li₂O***
- ***6m @ 2.40% Li₂O***
- ***7m @ 2.17% Li₂O***

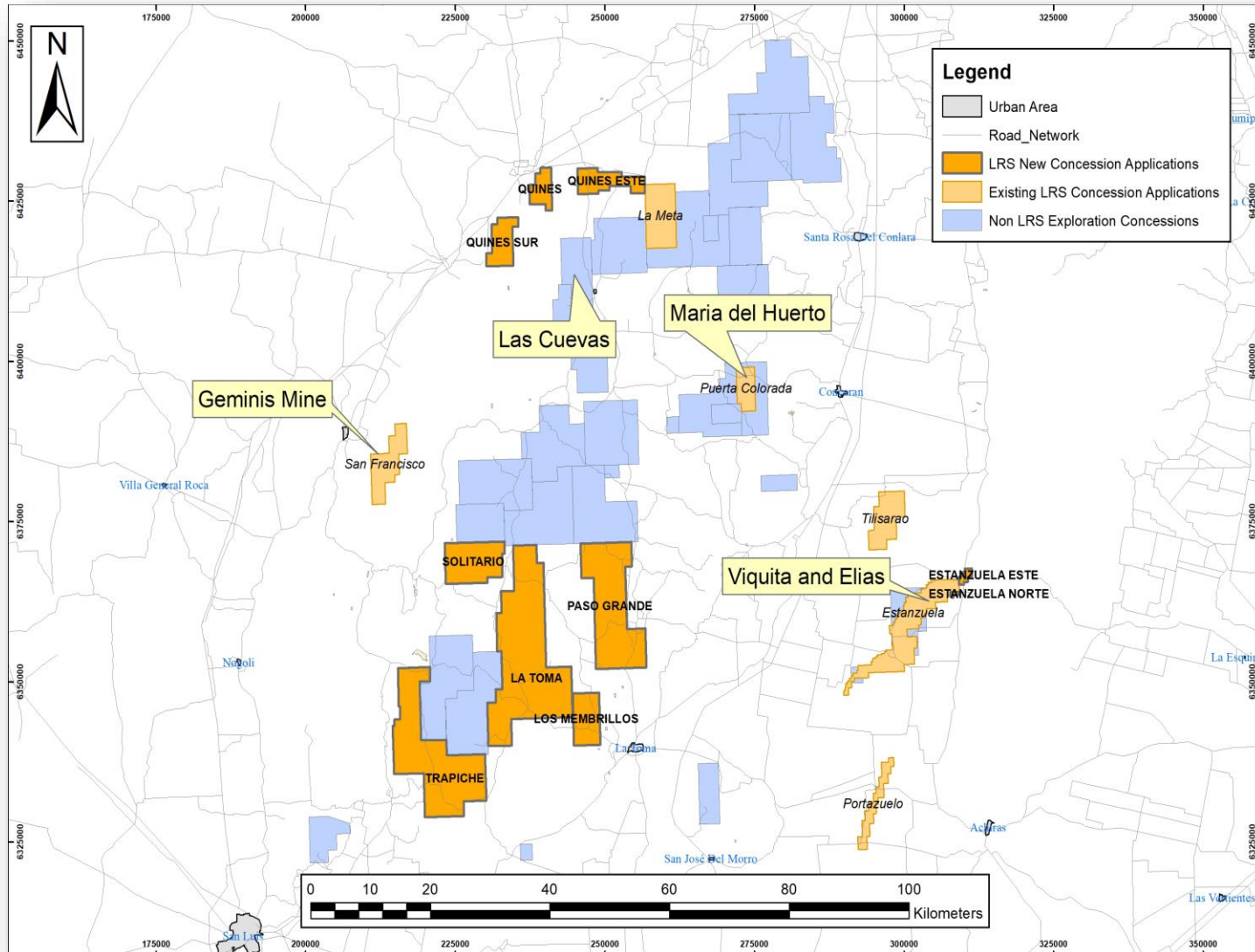
San Luis LRS Concessions



A total of twenty exploration concessions have been claimed within the Conlara and Estanzuela pegmatite fields. Each claim surrounds documented lithium bearing pegmatite deposits that have been mined in the past for Lithium bearing minerals (spodumene or lepidolite) and/or other related minerals including quartz, feldspar, albite, beryl, tantalite (tantalum ore) and colombite (niobium ore).

Existing Concession Name	Area (Ha)	New Concession Name	Area (Ha)
La Meta	5,000	Estanzuela Este	341
La Estanzuela	7,976	Estanzuela Norte	86
El Portazuelo	1,988	Quines	1,878
Tilarao	3,838	Quines Sur	2,875
San Francisco	3,977	Quines Este	3,174
Puerta Colorada	1,990	Trapiche	17,274
Maria del Huerto	18	La Toma	24,248
Total Existing Concessions	24,787	Solitario	5,878
		Paso Grande	13,926
		Los Membrillos	3,564
		Total New Concession Applications	73,243
		Total San Luis Concessions	98,030

Concesiones en San Luis



Un total de 20 concesiones han sido solicitadas en las áreas con pegmatitas en Conlara y Estanzuela. Cada solicitud contiene depositos de pegmatita con litio que han sido extraidos en el pasado ya sea de minerales que contienen litio (espodumeno o lepidolita) asi como otros minerales, incluyendo cuarzo, feldespato, albita, berilo, tantalita (mineral de tántalo) y colombita.

Existing Concession Name	Area (Ha)	New Concession Name	Area (Ha)
La Meta	5,000	Estanzuela Este	341
La Estanzuela	7,976	Estanzuela Norte	86
El Portazuelo	1,988	Quines	1,878
Tilisarao	3,838	Quines Sur	2,875
San Francisco	3,977	Quines Este	3,174
Puerta Colorada	1,990	Trapiche	17,274
Maria del Huerto	18	La Toma	24,248
Total Existing Concessions	24,787	Solitario	5,878
		Paso Grande	13,926
		Los Membrillos	3,564
		Total New Concession Applications	73,243
		Total San Luis Concessions	98,030

Maria del Huerto concession – San Luis



View to the South Western end of the main pit at Maria Del Huerto.

The Maria Del Huerto deposit was mined between 1936 and 1940 and was one of the first spodumene producers in the San Luis Province to have good grades. (Roquet et.al. 2006).



Examples of pink coloured weathered spodumene in the Maria del Huerto open pit (Intermediate Zone).

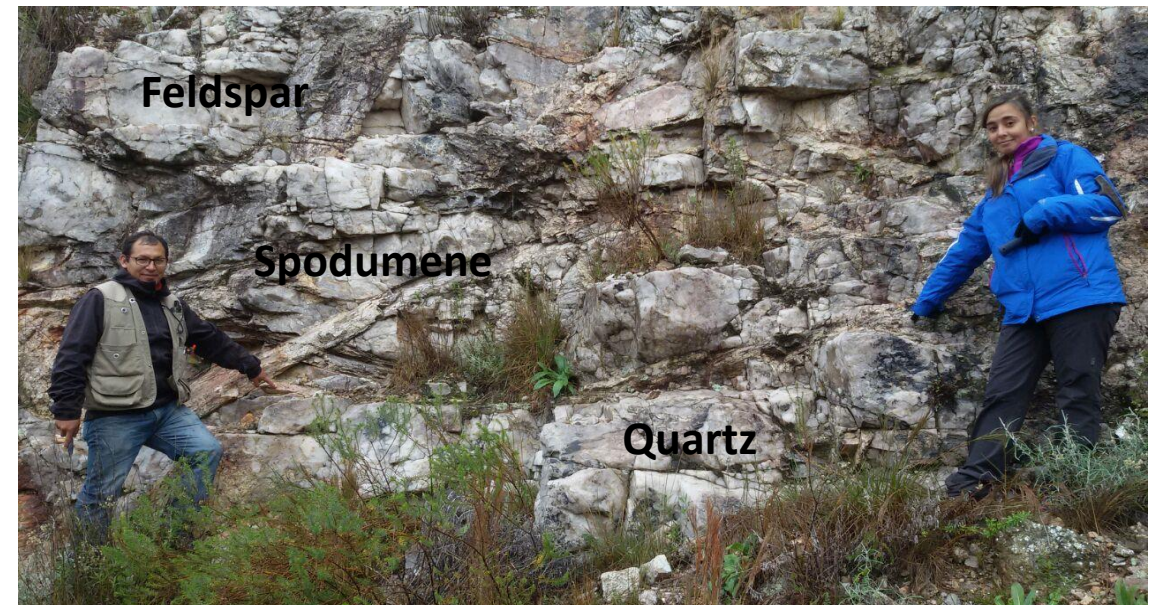
Maria del Huerto Cantera – San Luis



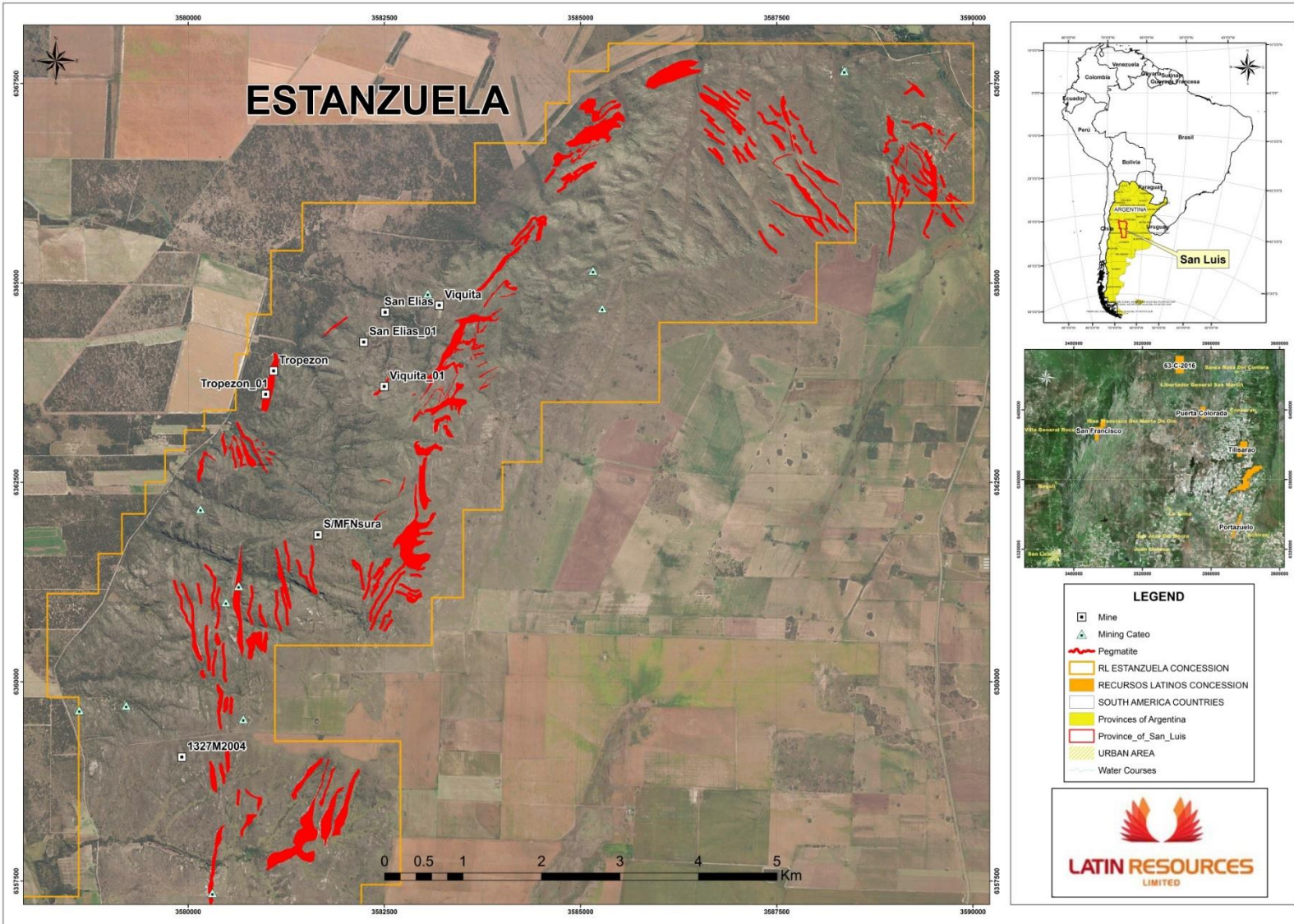
View to the South Western end of the main quarry at Maria Del Huerto.

El depósito Maria Del Huerto fue explorado y trabajado entre 1936 y 1940 y fue uno de los primeros procesos de espodumeno en obtener buenos resultados. (Roquet et.al. 2006).

La extracción de espodumeno de pegmatita es el mismo el proceso que la obtencion del cuarzo y feldespato de la cantera.

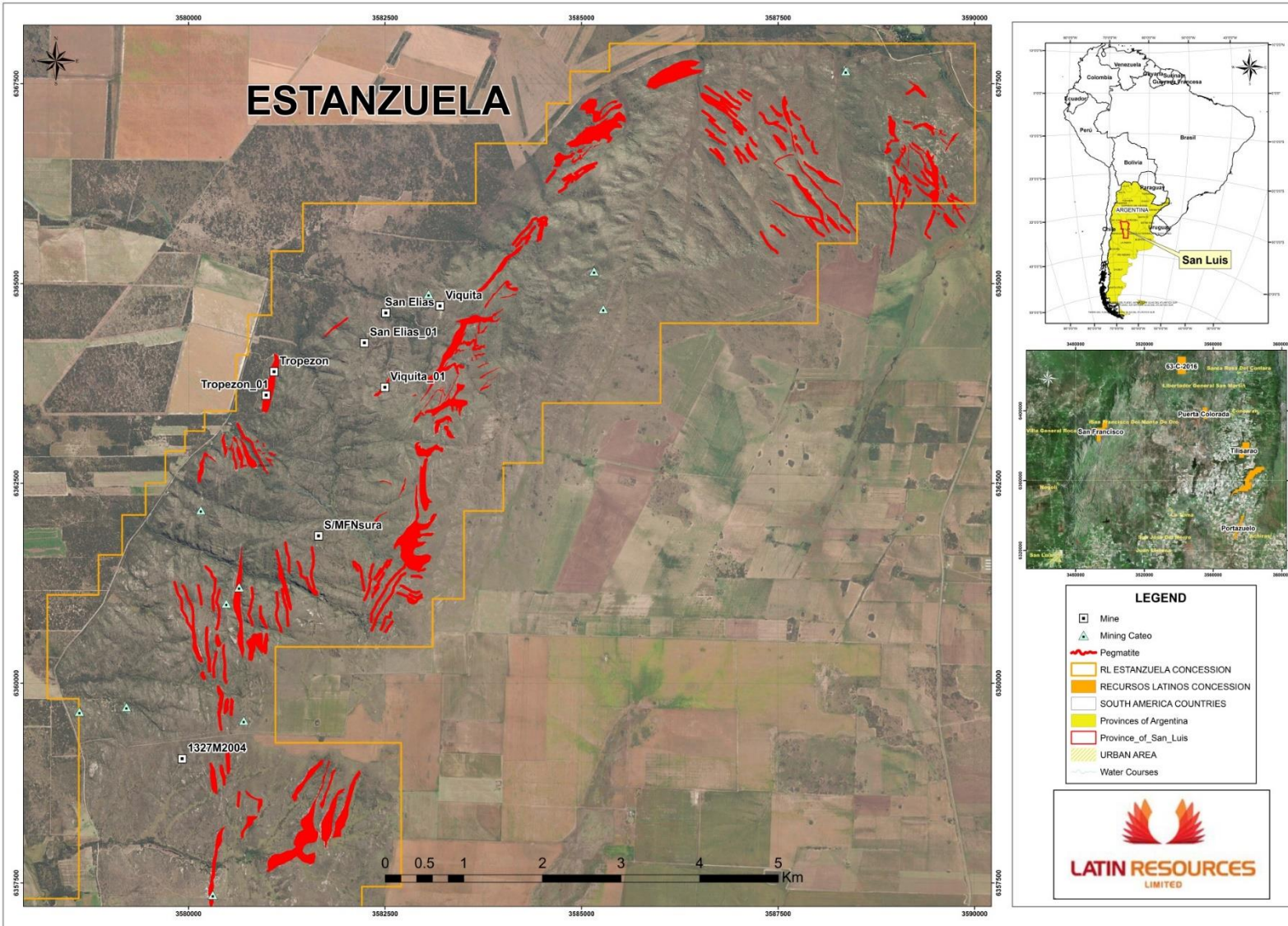


San Luis concessions – Estanzuela



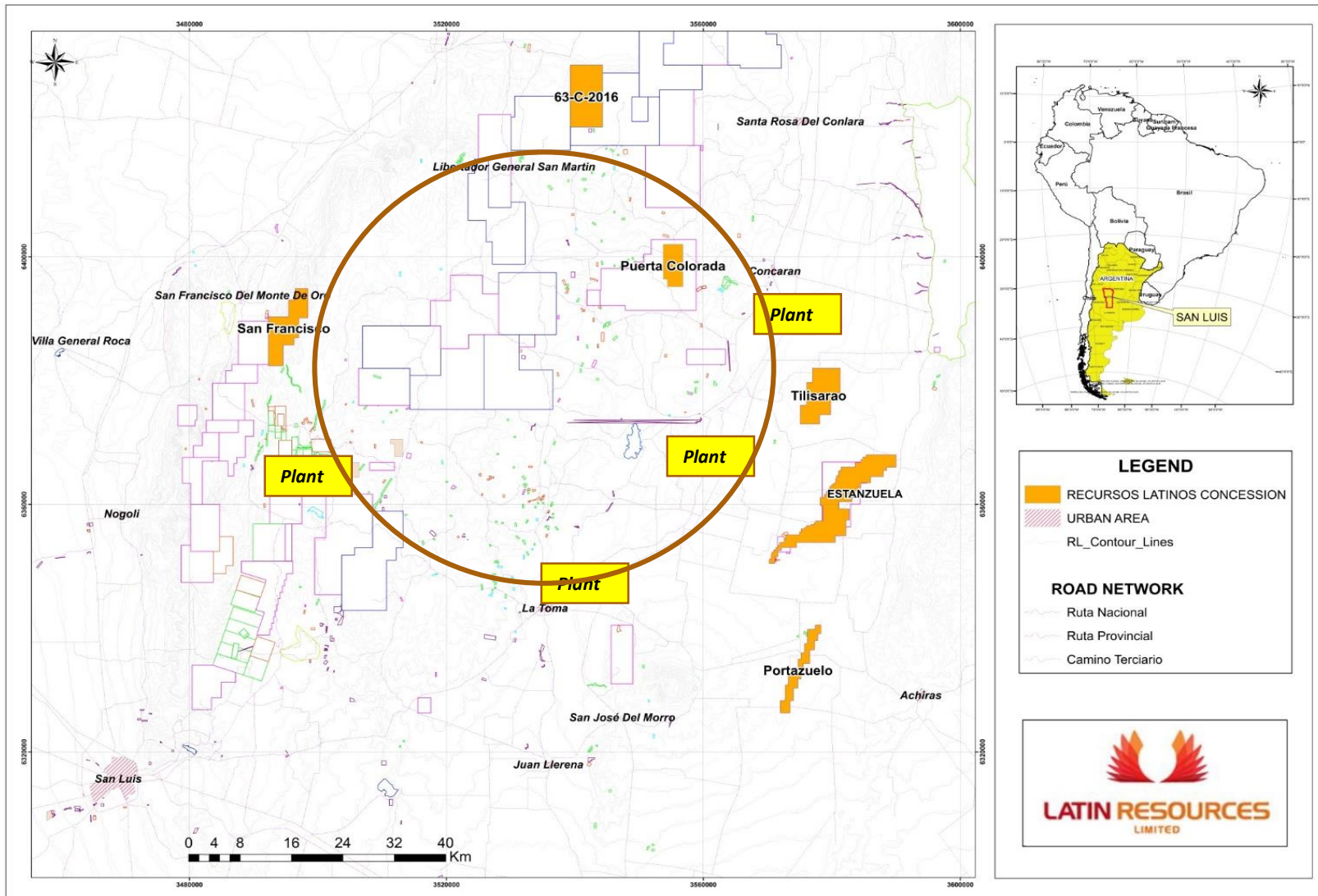
- The Estanzuela pegmatite field surrounds documented lithium bearing pegmatite deposits that have been mined in the past for Spodumene.*

Concesiones en San Luis – Estanzuela



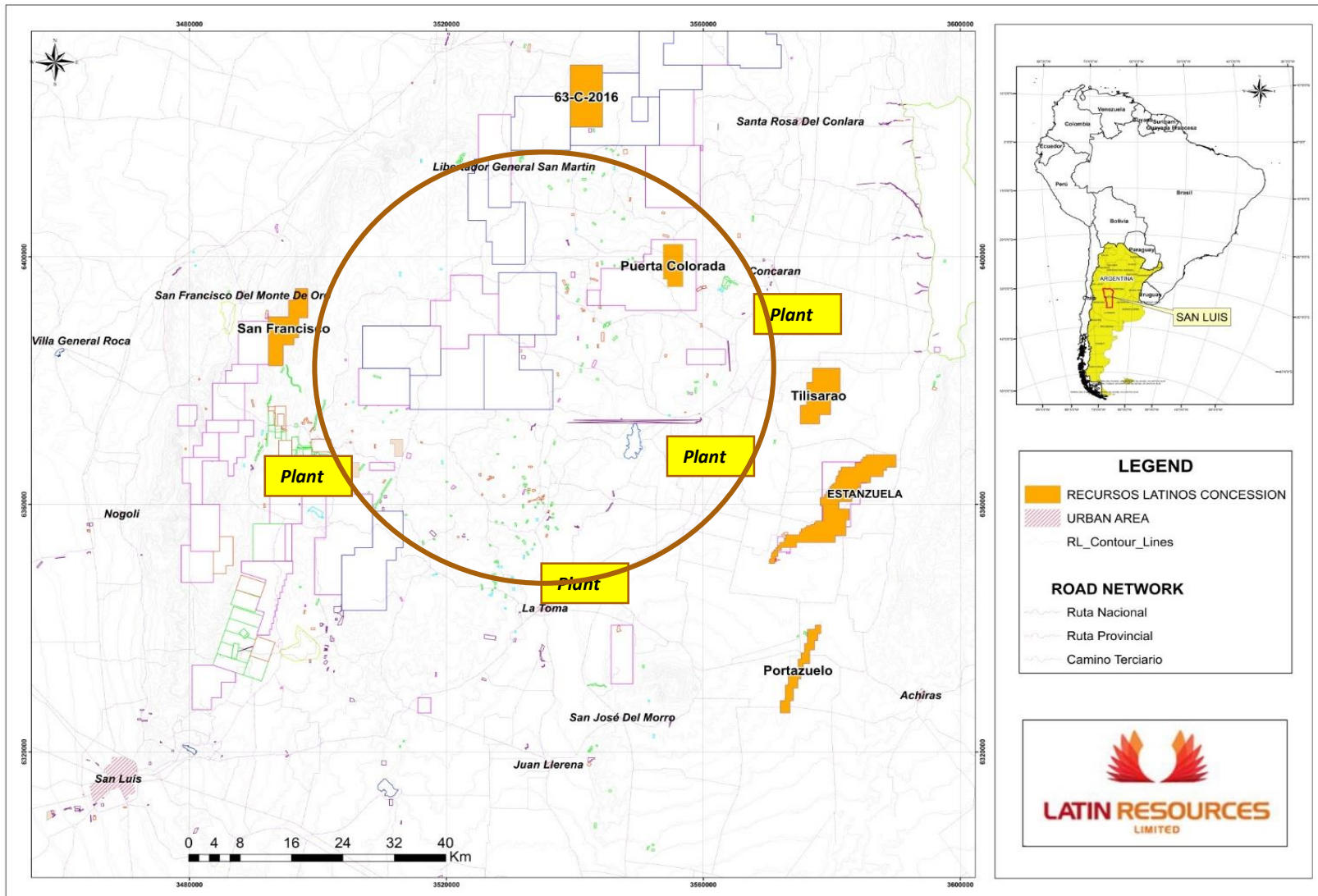
- *Las áreas en Estanzuela rodean depositos de litio que han sido explorados en el pasado por espodumeno.*

San Luis District – Logistics



- ***Feldspar and quartz processing plants in close proximity of LRS concessions with excellent infrastructure***
- ***The San Luis district has opportunity for short term production with a number of quartz and feldspar plants in the district and close to LRS concessions***
- ***LRS could modify or upgrade one of these plants to produce spodumene***

Provincia de San Luis – Logística



- **Plantas procesadoras de cuarzo y feldespato próximas a las concesiones de la empresa con excelente infraestructura.**
- **San Luis tiene la oportunidad de producir a corto plazo con varias plantas de cuarzo y feldespato cercanas a las concesiones de la empresa.**
- **Recursos Latinos puede colaborar en el acondicionamiento y mejora de estas plantas para producir espodumeno.**

Processing Plants – San Luis



- *There is an opportunity to add a spodumene circuit to a current processing plant in San Luis.*
- *The processing of spodumene is very similar to quartz and feldspar .*
- *There are no chemicals used in the spodumene processing only flotation of minerals.*
- *There is also an opportunity for local miners to toll process spodumene at LRS plant*

Plantas Procesadoras– San Luis



- *Oportunidad de agregar un circuito de espodumeno a las plantas existentes en San Luis.*
- *El procesamiento del espodumeno es similar al del cuarzo y el feldespató.*
- *NO se utilizan químicos en el procesamiento del espodumeno solo flotación de minerales.*
- *Oportunidad para mineros locales de colaborar en el traslado del espodumeno a la planta procesadora.*

Benefits to San Luis Province



- *There is an opportunity for San Luis to become a clean energy Province*
- *With this clean energy policy more jobs will be created*
- *The current processing plant at Concoran employs 20 people, this would increase to 50 with the addition of a spodumene circuit*
- *Latin Resources will look at investing \$10m initially in exploration with a further \$50m in the new processing plant*
- *there will be substantial monetary benefits with payment to San Luis province of tax and royalties with the production lithium spodumene .*

Beneficios para la Provincia de San Luis



- *Oportunidad de que San Luis sea una Provincia con energías limpias*
- *Con esta política de energías renovables se generan mas puestos de trabajo.*
- *Actualmente, la planta procesadora de Concarán emplea 20 personas, esta cifra se incrementaria en 50 con el agregado del circuito de espodumeno.*
- *Recursos Latinos proyecta invertir \$10m en exploración con una proyección de \$50m en una nueva planta procesadora.*
- *Beneficios económicos sustanciales para la provincia por el pago de impuestos y regalías*

Request from Recursos Latinos



- *We require our applications and permits to be granted and approved, so we can commence drilling.*
- *We have investment ready to go, but we are restricted as we have no permission to drill .*

Requerimiento de Recursos Latinos



- *Solicitamos que nuestras solicitudes y permisos de exploracion seas otorgados y aprobados para comenzar las perforaciones.*
- *Nuestras inversiones estan listas para efectivizarse, sin embargo nos encontramos limitados al no contar aun con los permisos para perforar.*



LATIN RESOURCES LIMITED

Thank You & Questions

Competent Person Statement

The information in this report that relates to Geological Data and Exploration Results is based on information compiled by Mr Samuel Moyle, who is a Member of the Australian Institute of Mining and Metallurgy. Mr Moyle has sufficient experience which is relevant to the style of mineralisation and type of deposit under consideration and to the activity which he is undertaking to qualify as a Competent Person as defined in the 2012 Edition of the 'Australasian Code for Reporting of Exploration Results, Mineral Resources and Ore Reserves'. Mr Moyle is the Exploration Manager of Latin Resources Limited and consents to the inclusion in this report of the matters based on his information, and information presented to him, in the form and context in which it appears.



LATIN RESOURCES
LIMITED

Gracias por su atención