

ABBOTTS : SIGNIFICANT HISTORIC DRILLING RESULTS

Ora Gold Limited (“Ora Gold” or “Company”) completed the acquisition of the Abbotts ground on 21 December 2018, significantly expanding the size and prospectivity of its Garden Gully gold project. As part of the purchase, Ora Gold obtained all the previous owner’s exploration data. A detailed desktop review of these data, together with all the information available in the public domain in the form of reports lodged by previous explorers, shows a number of locations where historic drilling returned significant intercepts of gold mineralisation. Further exploration in and around the areas that returned these high grade results will form part of the next stages of exploration at Garden Gully as the Company seeks to identify and define mineralisation suitable for small scale mining and treatment, in accordance with our stated change in development strategy.

- **Mount Vranizan / New Murchison King area ¹ (downhole widths):**

4m at 48.9 gpt Au from 123m in AB126
7m at 11.5 gpt Au from 66m in AB113
4m at 13.9 gpt Au from 59m in AB115
4m at 10.4 gpt Au from 45m in AB121
3m at 12.5 gpt Au from 113m in AB141
3m at 8.1 gpt Au from 129m in AB134
5m at 4.1 gpt Au from 94m in AB054

- **Kingswood area ² (downhole widths):**

8m at 13.5 gpt Au from 16m in ABAC0110
8m at 5.5 gpt Au from 52m in ABAC0099
4m at 6.1 gpt Au from 76m in ABAC0100

- **Abernethy South (downhole widths):**

10m at 41.8 gpt Au from 30m in ABNI143 ^{2,3,4}
6m at 13.6 gpt Au from 46m in ABNI343 ³
1m at 27.2 gpt Au from 62m in ABAC0041 ⁴

These intercepts complement those previously announced from the Company’s own exploration to date, including drilling carried out at Crown Prince, Lydia and Young ⁵ :

8m at 22.3 gpt Au from 259.2m in TGGRCDD110 (**Crown Prince**)
4m at 16.5 gpt Au from 166 m in TGGRC103 (**Crown Prince**)
7m at 24.5 gpt Au from 11 m in TGGRC018 (**Lydia**)
12m at 4.0 gpt Au from 96 m in TGGRC026 (**Lydia**)
5m at 6.9 gpt Au from 14 m in TGGAC181 (**Young**)

Sources: 1. WA DMP WAMEX report a54175 Mar 1998 St Barbara Mines Ltd ATR; 2. Doray Minerals Ltd 10-Nov-2011; 3. Doray Minerals 14-Jul-2011; 4. Doray Minerals 20-Oct-2011; 5. Full details in OAU.ASX releases of 29-Jul and 13-Sep 2016; 12-Dec-2017; 08-Feb and 28-Jun 2018. Neither Doray Minerals nor St Barbara Mines has any active current interest in this project.

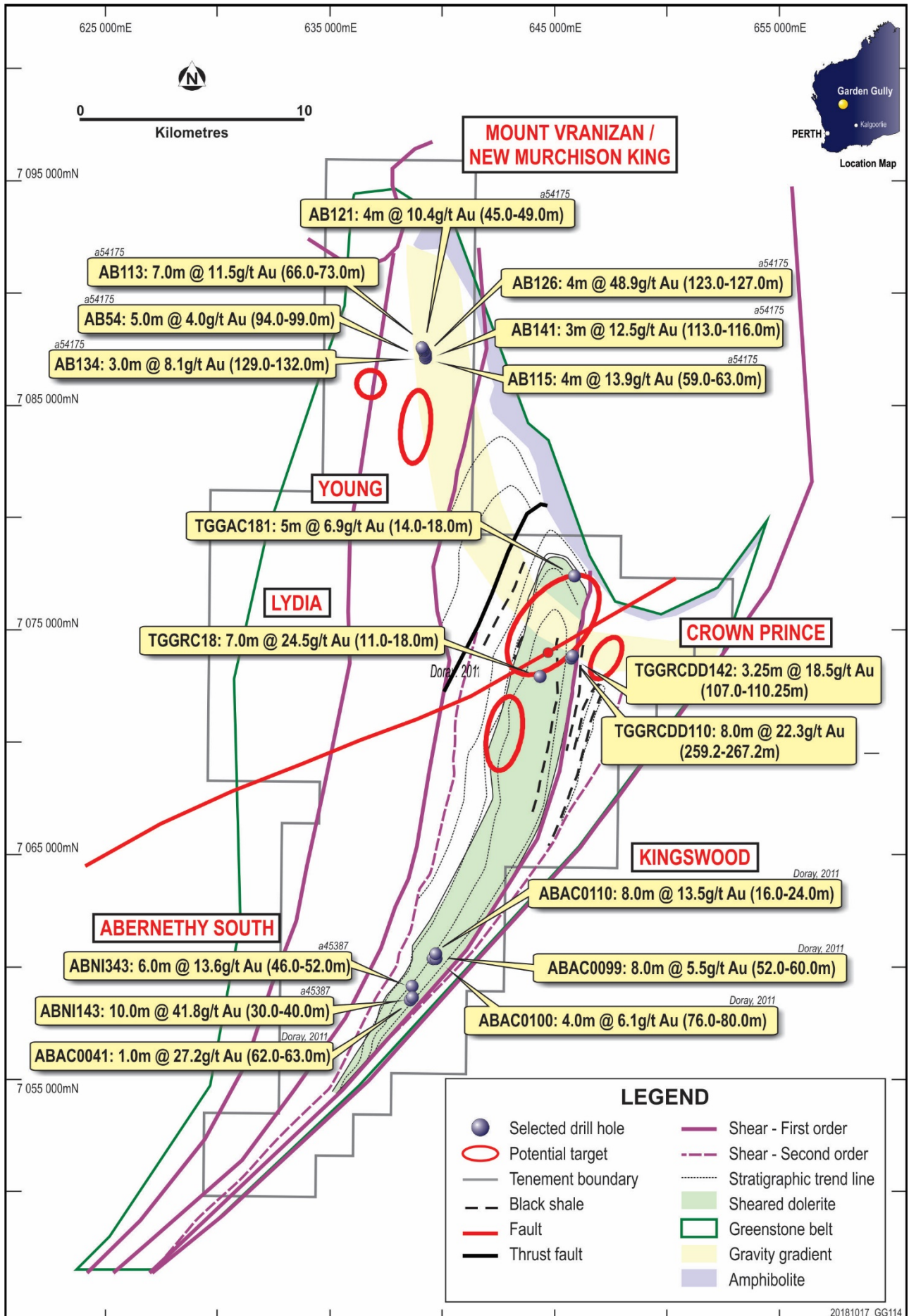


Figure 1. Garden Gully Project showing areas of potential interest.

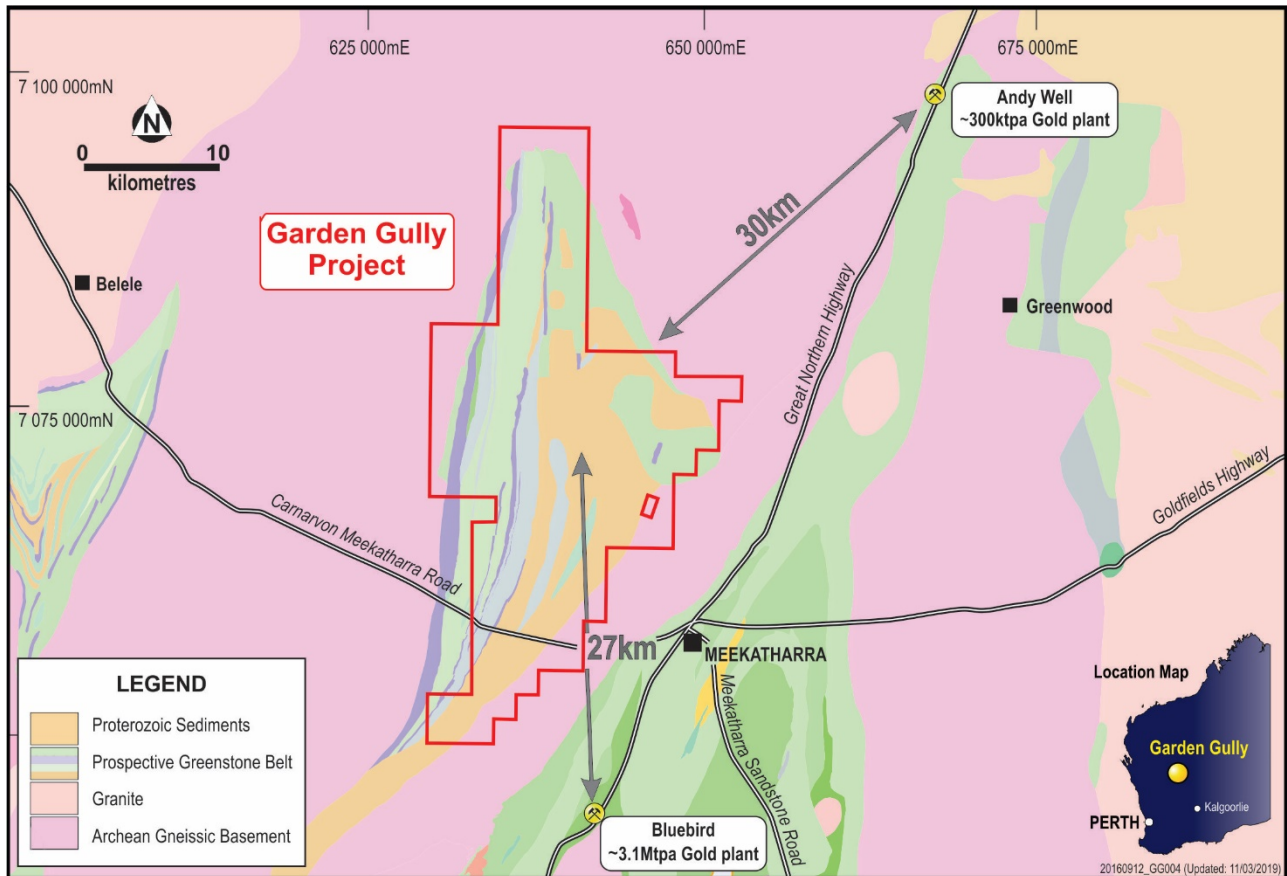


Figure 2. Garden Gully regional location.

About Garden Gully.

Ora Gold’s wholly-owned Garden Gully project comprises 21 PLs, 7 ELs and 2 MLs, all granted, covering about 530 square kilometres. It is located about 20 kilometres north-west of the town of Meekatharra, a well-established and proven gold endowment centre in Western Australia’s Murchison Province that has delivered in excess of seven million ounces of gold production to date. Ora Gold began exploration on the project in mid-2016 and continues to explore aggressively as we test the unquestioned potential of this exciting Garden Gully project.

For further information contact:
Mr Tony Lofthouse - Chief Executive Officer
+61 8 9389 6927

ORA GOLD LIMITED	ASX Code
Quoted Shares: 646.1M	OAU
Quoted Options: 109.3M	OAUOB

Competent Person Statement

The details contained in this report that pertain to Exploration Results, Mineral Resources or Ore Reserves, are based upon, and fairly represent, information and supporting documentation compiled by Mr Costica Vieru, a Member of the Australian Institute of Geoscientists and a full-time employee of the Company. Mr Vieru has sufficient experience which is relevant to the style(s) of mineralisation and type(s) of deposit under consideration and to the activity which he is undertaking to qualify as a Competent Person as defined in the 2012 edition of the “Australasian Code for Reporting of Exploration Results, Mineral Resources and Ore Reserves” (JORC Code). Mr Vieru consents to the inclusion in this report of the matters based upon the information in the form and context in which it appears.