



# KORAB RESOURCES LIMITED

KORAB HOUSE

[www.korab.com.au](http://www.korab.com.au)

28 March 2019

## Issued Capital

Issued Shares: 309 Mln  
Last Price: 3.9 cents  
Market Cap: \$12.1 Mln

## Listing Codes

ASX: KOR  
BERLIN: C6S

## Directors

**Andrej K. Karpinski**  
Executive Chairman  
Director

**Rodney H. Skeet**  
Non-executive Director  
(Independent)

**Daniel A. Smetana**  
Non-executive Director  
(Independent)

**Anthony G. Wills**  
Non-executive Director  
(Independent)

## Projects

**Winchester**  
(Rum Jungle, NT)  
Magnesium carbonate  
(MgCO<sub>3</sub>)

**Batchelor**  
(Rum Jungle, NT)  
Au, Ag, Zn, Pb, Ni, Cu, Co, Sc,  
Mn

**Geolsec**  
(Rum Jungle, NT)  
Phosphate rock  
(P2O<sub>5</sub>)  
(Sub-leased to third party)

**Mt. Elephant**  
(Ashburton, WA)  
Au, Cu  
(Optioned for sale)

Follow us on Twitter

@KorabResources

## WINCHESTER MAGNESIUM CARBONATE PROJECT UPDATE

Korab Resources Ltd ("Korab", or "Company") (ASX: KOR) and its subsidiaries ("Korab Group") refer to the ASX announcement dated 22 March 2019 titled: "WINCHESTER MAGNESIUM CARBONATE PROJECT UPDATE" and a reference therein to an assessment of the potential economic impact of the sales of the low grade material (as a new product stream) results of which were expected to be released to the market this week following their verification with outside advisors. Korab Group advises that the results are still being verified with outside advisors. We anticipate that this process will be completed over the next few days with the results expected to be released to the market early next week.

### ABOUT WINCHESTER

The proposed magnesium carbonate quarry at Winchester is located 2 km from the regional centre of Batchelor some 70km south of Darwin along Stuart Highway. Please refer to Figure 1 for details of the location of the proposed Winchester magnesium carbonate quarry, and Korab Group's various mineral tenements in the area. Deposit is at shallow depth and is covered by a thin layer (few meters) of unconsolidated clay and gravel (see Figure 2). Winchester magnesium carbonate rock can be quarried using drill and blast, shovel and truck method.

### CONTACT PERSON:

Andrej K. Karpinski, Executive Chairman - Australia: (08) 9474 6166, International: +61 8 9474 6166

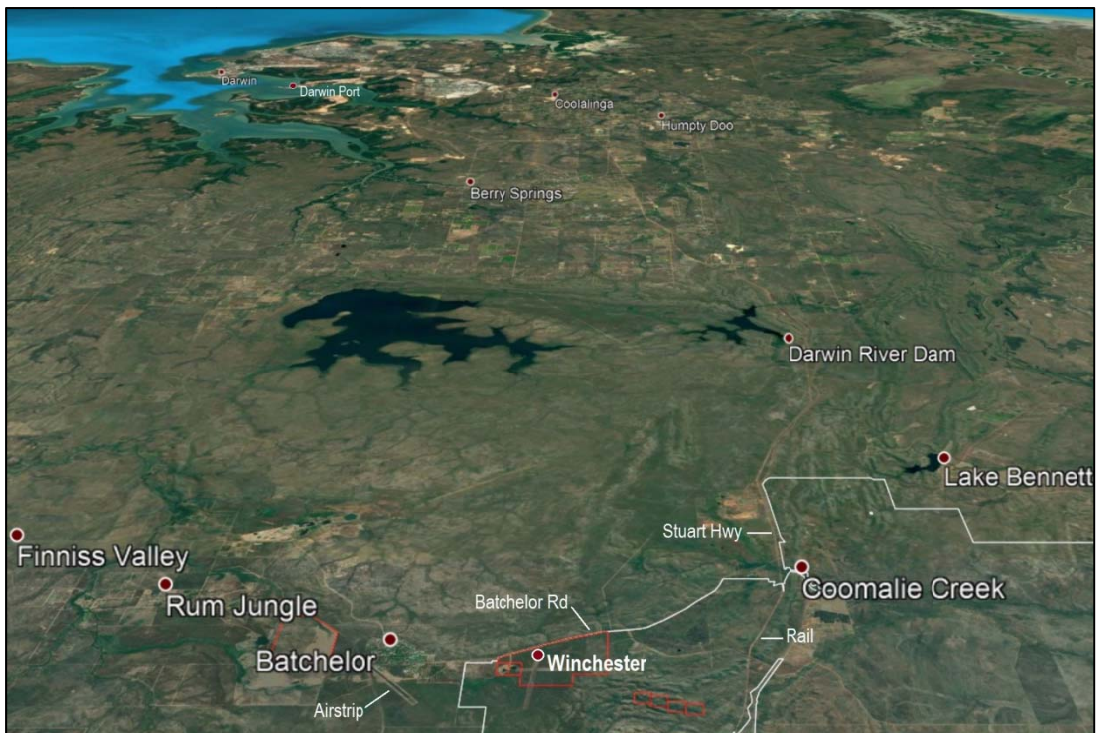


Figure 1 Location of Korab Group's mineral tenements (exploration leases in white and mining leases in red) and Winchester magnesium carbonate project relative to Darwin Port and basic infrastructure



20 PROWSE STREET, WEST PERTH, WA, 6005, AUSTRALIA  
PO BOX 1958, WEST PERTH, WA, 6872, AUSTRALIA  
TEL (08) 9474 6166 FAX (08) 9322 6333  
ACN 082 140 252



PAGE 1



# KORAB RESOURCES LIMITED

KORAB HOUSE

[www.korab.com.au](http://www.korab.com.au)

## Issued Capital

Issued Shares: 309 Mln  
Last Price: 3.9 cents  
Market Cap: \$12.1 Mln

## Listing Codes

ASX: KOR  
BERLIN: C6S

## Directors

**Andrej K. Karpinski**  
Executive Chairman  
Director

**Rodney H. Skeet**  
Non-executive Director  
(Independent)

**Daniel A. Smetana**  
Non-executive Director  
(Independent)

**Anthony G. Wills**  
Non-executive Director  
(Independent)

## Projects

**Winchester**  
(Rum Jungle, NT)  
Magnesium carbonate  
(MgCO<sub>3</sub>)

**Batchelor**  
(Rum Jungle, NT)  
Au, Ag, Zn, Pb, Ni, Cu, Co, Sc,  
Mn

**Geolsec**  
(Rum Jungle, NT)  
Phosphate rock  
(P2O<sub>5</sub>)  
(Sub-leased to third party)

**Mt. Elephant**  
(Ashburton, WA)  
Au, Cu  
(Optioned for sale)

Follow us on Twitter

@KorabResources

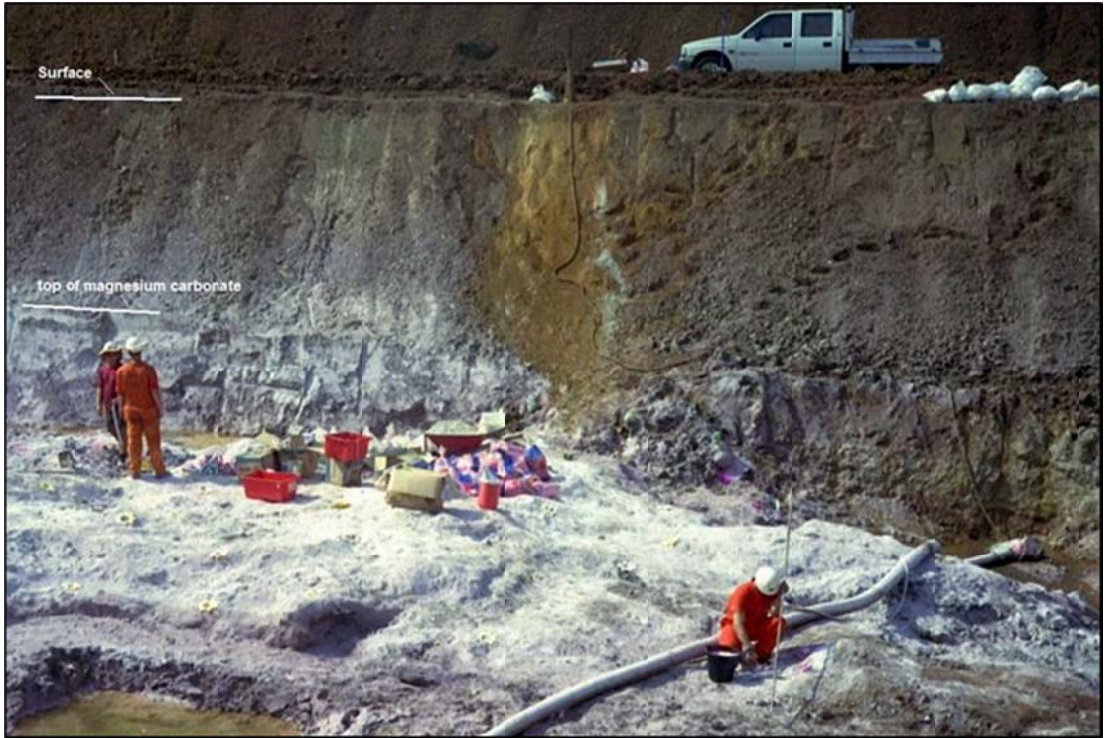


Figure 2 Test mining of magnesium carbonate at Winchester (setting of explosive charges)

## ABOUT KORAB RESOURCES

Korab Resources Ltd is an international mining and exploration company with operations in Australia and Europe. Korab's projects include Winchester magnesium carbonate deposit at Batchelor in the Northern Territory of Australia, Geolsec phosphate rock deposit also at Batchelor, and other gold, silver, copper, cobalt, nickel, and polymetallic projects in Australia and overseas. More information about Korab's projects can be sourced from Korab's website at [www.korab.com.au](http://www.korab.com.au). Korab's shares are traded on Australian Securities Exchange (ASX) and on the Berlin Stock Exchange (Berliner Börse) through Equiduct electronic trading platform.

## DISCLAIMER AND CAUTIONARY STATEMENT

Forward-looking statements are statements that are not historical facts. Words such as "expect(s)", "expected", "feel(s)", "believe(s)", "will", "may", "anticipate(s)", "should", "envisage(s)" and similar expressions are intended to identify such forward-looking information. This information includes, but is not limited to statements regarding future exploration results, resources, or reserves, and production. Anyone reading this report is cautioned not to place undue reliance on these forward-looking statements. All of such statements are subject to risks and uncertainties (many of which are difficult to predict and which generally are beyond the control of the Company) that could cause actual results to differ materially from those expressed in, or implied or projected by, the forward-looking information and statements. These risks and uncertainties include, but are not limited to: those relating to the interpretation of exploration results (including drill results), the geology, grade and continuity of mineral deposits and conclusions of economic evaluations; risks relating to possible variations in reserves, grade, mining dilution, ore loss, and recovery rates; risks relating to changes in project financial and technical parameters; risks relating to the potential for delays in exploration programs, project evaluation/review, completion of feasibility studies and project development; risks related to commodity prices and foreign exchange rate fluctuations; risks related to failure to secure adequate financing on a timely basis and on acceptable terms; risks related to delays in obtaining governmental, or other permits and approvals; risks related to security of tenure; and other risks and



20 PROWSE STREET, WEST PERTH, WA, 6005, AUSTRALIA  
PO BOX 1958, WEST PERTH, WA, 6872, AUSTRALIA  
TEL (08) 9474 6166 FAX (08) 9322 6333  
ACN 082 140 252





# KORAB RESOURCES LIMITED

KORAB HOUSE

[www.korab.com.au](http://www.korab.com.au)

uncertainties related to the Company's prospects, properties and business strategy. Any forward-looking information contained in this report is provided as of the date of this report. Except as required under applicable listing rules and securities laws, the Company does not intend, and does not assume any obligation, to update this forward-looking information.

## Issued Capital

Issued Shares: 309 Mln  
Last Price: 3.9 cents  
Market Cap: \$12.1 Mln

## Listing Codes

ASX: KOR  
BERLIN: C6S

## Directors

**Andrej K. Karpinski**  
Executive Chairman  
Director

**Rodney H. Skeet**  
Non-executive Director  
(Independent)

**Daniel A. Smetana**  
Non-executive Director  
(Independent)

**Anthony G. Wills**  
Non-executive Director  
(Independent)

## Projects

**Winchester**  
**(Rum Jungle, NT)**  
Magnesium carbonate  
(MgCO<sub>3</sub>)

**Batchelor**  
**(Rum Jungle, NT)**  
Au, Ag, Zn, Pb, Ni, Cu, Co, Sc,  
Mn

**Geolsec**  
**(Rum Jungle, NT)**  
Phosphate rock  
(P<sub>2</sub>O<sub>5</sub>)  
(Sub-leased to third party)

**Mt. Elephant**  
**(Ashburton, WA)**  
Au, Cu  
(Optioned for sale)

Follow us on Twitter

@KorabResources



20 PROWSE STREET, WEST PERTH, WA, 6005, AUSTRALIA  
PO BOX 1958, WEST PERTH, WA, 6872, AUSTRALIA  
TEL (08) 9474 6166 FAX (08) 9322 6333  
ACN 082 140 252



PAGE 3