



Jadar Lithium

ASX: JDR

INVESTOR PRESENTATION
HONG KONG MINES & MONEY



Disclaimer

This presentation has been prepared by Jadar Lithium Limited ("JDR"). The information contained in this presentation is a professional opinion only and is given in good faith. The material in this presentation ("material") is not and does not constitute an offer, invitation or recommendation to subscribe for or purchase any security in JDR, nor does it form the basis of any contract or commitment. JDR makes no representation or warranty, express or implied, as to the accuracy, reliability or completeness of this material. JDR, its directors, employees, agents and consultants shall have no liability, including liability to any person by reason of negligence or negligent misstatement, for any statements, opinions, information or matters, express or implied, arising out of, contained in or derived from, or for any omissions from, this material, except liability under statute that cannot be excluded. Statements contained in this material, particularly those regarding possible or assumed future performance, costs, dividends, production levels or rates, prices, resources, reserves or potential growth of JDR, industry growth or other trend projections are, or may be, forward looking statements. Such statements relate to future events and expectations and, as such, involve known and unknown risks and uncertainties, many of which are outside the control of, and may be unknown to, JDR. Actual results and developments may differ materially from those expressed or implied by these forward looking statements depending on a variety of factors. Recipients of this presentation are cautioned to not place undue reliance on such forward looking statements. JDR does not take responsibility to release publicly any revisions or updates to any forward looking statements to reflect events, circumstances or unanticipated events occurring after the date of this presentation except as required by law or by any appropriate regulatory authority.

This presentation is a visual aid and is not intended to be read as a stand alone document. The material contains selected and abbreviated summary information about JDR and its subsidiaries and their activities current as at the date of this presentation. The material is of general background and does not purport to be complete. JDR does not take responsibility for updating any information or correcting any error or omission which may become apparent after the date of this presentation.

Compliance Statement

This presentation contains information extracted from ASX market announcements reported in accordance with the 2012 edition of the "Australasian Code for Reporting of Exploration Results, Mineral Resources and Ore Reserves" ("2012 JORC Code") and available for viewing at www.jadarlithium.com.au. JDR confirms that it is not aware of any new information or data that materially affects the information included in any original ASX market announcement.

ASX announcements referred to are as follows:

Satellite Project – 14 March 2019;

Weinebene Project – 19 February 2019;

Cer Project – 6 July 2018; and

Vranje South Project – 14 November 2018 and 20 August 2018.

Corporate Overview

BOARD OF DIRECTORS

- **Mr Luke Martino** – Specialist in corporate advisory and investment banking
- **Mr Steven Dellidis** – Project management and strategic investment for 20+ years
- **Mr Michael Davy** – 15+ years as an executive with broad experience
- **Mr Nicholas Sage** – Experienced marketing and communications professional
- **Mr Stefan Müller** – Extensive financial markets and investment banking knowledge and experience built over a 25-year career

CAPITAL STRUCTURE

Shares on Issue (Undiluted)	430.4 million
Options (\$0.02; 12/2020)	70.2 million
Options (\$0.03; 07/2020)	30 million
Share Price (25/03/2019)	A\$0.011
Market Capitalisation (Undiluted)	~A\$4.7 million
Cash balance (31/12/2018)	~A\$2.8 million
Escrowed shares (12/2019)	50 million

Listing	ASX “JDR” Frankfurt Exchange R1E.F Berlin Exchange R1E.B Stuttgart Exchange R1E.SG
---------	---

TOP HOLDERS (@ 25.03.2019)

Top 20	46%
Other	54%

TOP 5 SHAREHOLDERS (@ 25.03.2019)

J P Morgan Nominees Australia Limited	12.93%
Sunshore Holdings Pty Ltd	4.17%
Exchange Minerals Ltd	3.24%
Bennelong Resource Capital Pty Ltd	2.65%
ADKSK Superfund Pty Ltd	2.60%

Portfolio Overview

28KM²

Weinebene¹ 80% OWNED (AUSTRIA)

- Surrounding European Lithium Limited's Wolfsberg lithium deposit with 11MT at 1.0% Li₂O - JORC compliant resource (now in DFS) (refer EUR ASX Announcement 3 July 2017)
- High Grade mineralisation trends/strikes into JDR ground
- Natural extension of Wolfsberg deposit
- Identified numerous spodumene bearing pegmatites with very high lithium values up to 3.39% Li₂O
- Additional field activities underway to support future drilling.

37km²

Satellite Projects² 80% OWNED (AUSTRIA)

- Unique high value lithium targets
- Sampling confirmed numerous pegmatites with very high lithium values up to 3.88% Li₂O
- Additional field activities underway to support future drilling.

90KM²

Vranje South 100% OWNED (SERBIA)

- Very similar geological setting to the Jadar Basin, which hosts Rio Tinto's world-class Jadarite discovery = one of the world's largest lithium deposits
- Defined target areas with supporting high grade geochemistry.

75KM²

Rekovac 100% OWNED (SERBIA)

- Very similar geological setting to the Jadar Basin, which hosts Rio Tinto's world-class Jadarite discovery = one of the world's largest lithium deposits
- Defined target areas with supporting high grade geochemistry.

93KM²

Cer 100% OWNED (SERBIA)

- Pegmatite fields within close proximity to Rio Tinto's Jadarite deposit
- Potential for spodumene based mineralisation.



¹ Weinebene Project – refer JDR ASX Announcement dated 19 February 2019

² Satellite Projects – refer JDR ASX Announcement dated 14 March 2019

Lithium Sources → Limited in Europe

IN PRODUCTION

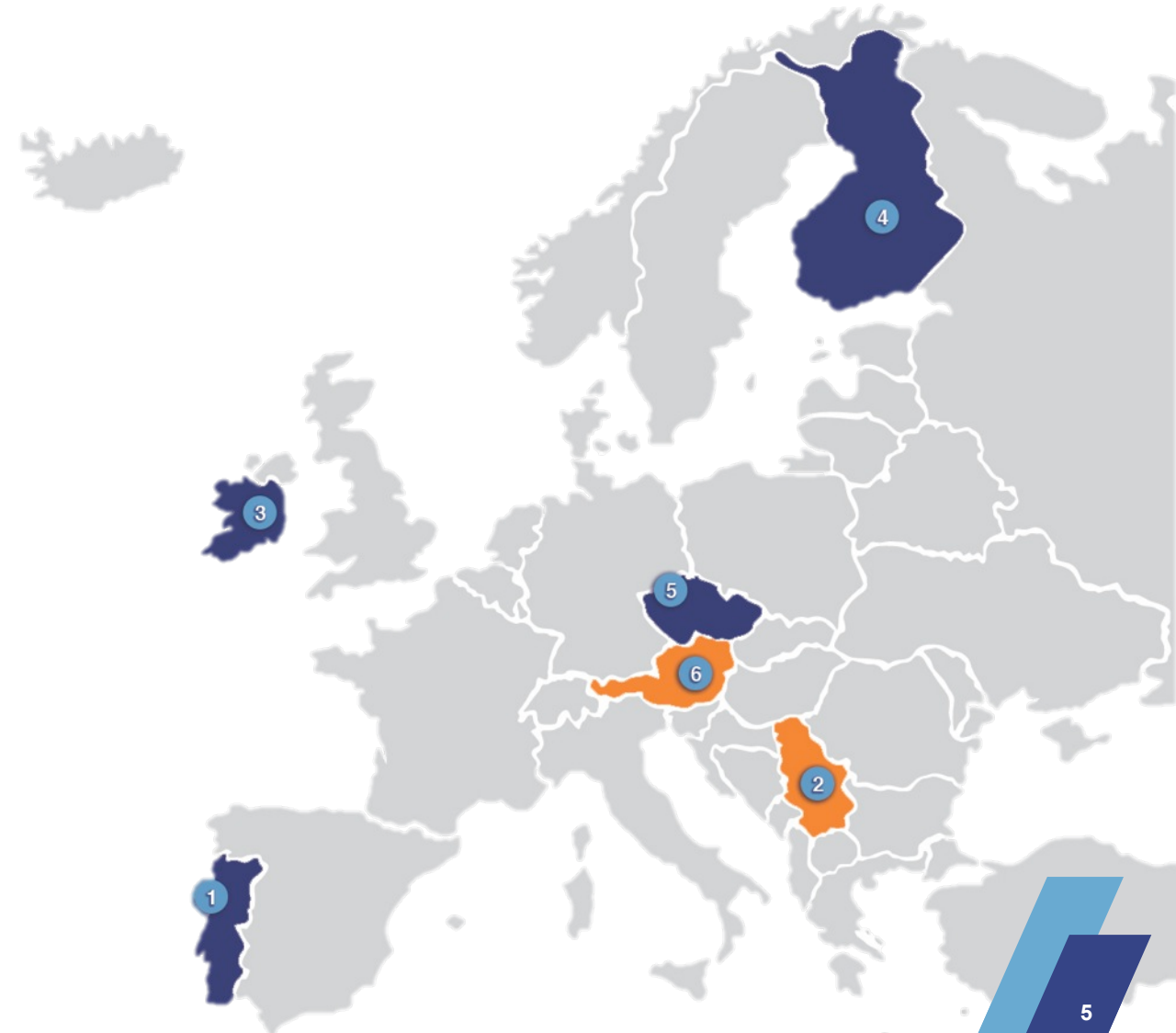
1. SMP (Portugal)

WORLD CLASS POTENTIAL

- 2a. Rio Tinto (Serbia)
 - Inferred Resource of 135.7Mt @ 1.86% Li₂O and 15.4% B₂O₃¹ (Ranked as one of the world's largest Li deposits)
 - *start construction ~ 2020*
 - *production target ~ 2023*
- 2b. Jadar Lithium (Serbia)
 - two licences with very similar geological setting to Rio's Jadarite project
 - significant upside potential

SCOPING / EXPLORATION

3. Avalonia Lithium (Ireland)
4. Keliber (Finland)
5. European Metals/Cinovec Tin (Czech Republic)
- 6a. European Lithium (Austria)
 - JORC Resource of ~11Mt @ 1.0% Li₂O (Wolfsberg project)²
- 6b. Jadar Lithium (Austria)
 - Licences surrounding European Lithium's Wolfsberg project
 - Attractive satellite exploration assets with potential for near-term discovery



1. https://www.riotinto.com/documents/180321_Presentation_Andrew_Latham_Lithium_Battery_Metals_Conference.pdf
2. <https://europeanlithium.com/wolfsberg-lithium-project/>

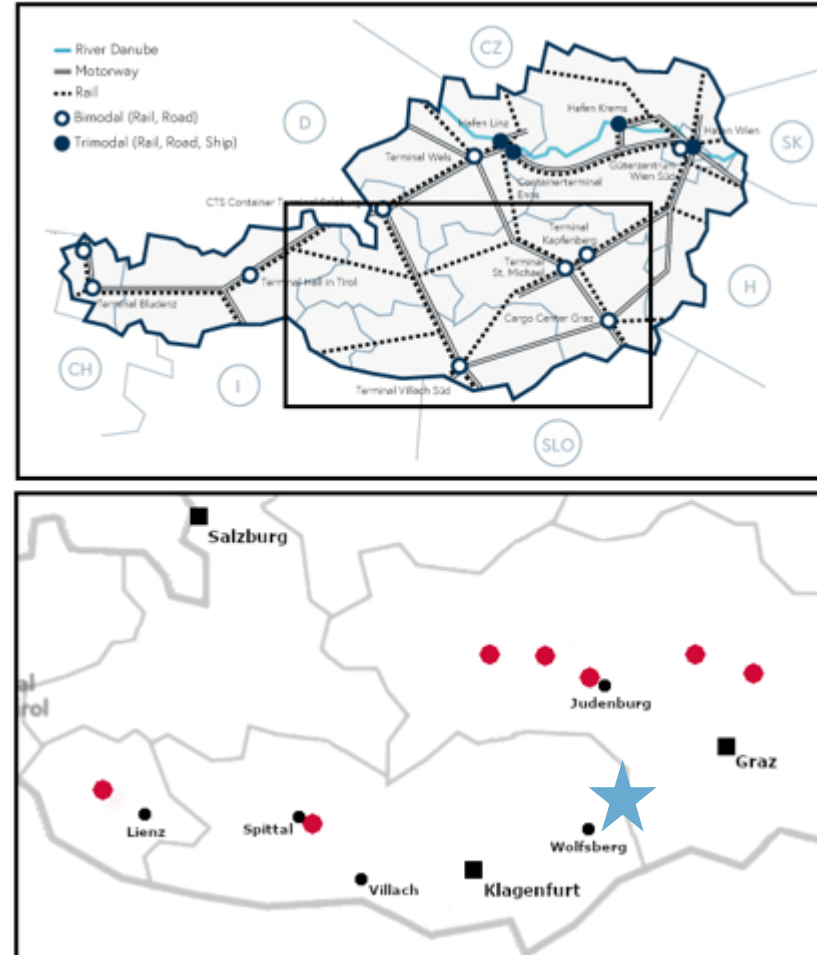
Austria

Part of European Union since 1995	Highly industrialized economy with skilled labor force
Closely tied to other EU economies, especially Germany	In 2012 the Austrian Raw Material Alliance was founded
Economic and Monetary Union since 1999	Excellent infrastructure with access to Trans-European Transport Networks
The Austrian Mineral Raw Materials Act (MinroG) regulate exploration and extraction of minerals	Supportive government with positive investment incentives
Favourable foreign investment laws	No restrictions on foreign ownership
In 2017 Austria elected a new pro-business government	No restrictions on flow of capital



Austrian Project – Highlights

- Jadar Lithium Limited holds an 80% interest in Austrian Lithium Exploration Licences
- Eight project areas covered with 136 exploration permits “Freischurf” covering in total 64.2 km² - **all hosting Li bearing mineralisation**
- The eastern Alps region comprises favourable geology for locating deposits of lithium bearing pegmatite ores
- Weinebene project area surrounding European Lithium Limited’s Wolfsberg lithium deposit with 11MT at 1.0% Li₂O - JORC compliant resource (now in DFS) (refer EUR ASX Announcement dated 3 July 2018)
- Potential for near-term brownfield discovery (resource extension)
- Attractive satellite exploration assets with potential for further high grade resources/mill feed
- Strategically placed assets for European manufacturers using lithium (In the heart of European manufacturing center).



- Denotes satellite projects¹
Highest Grd 3.88% Li₂O, Avg Grd 1.54% Li₂O
- ★ Denotes Weinebene project²
Highest Grd 3.39% Li₂O, Avg Grd 1.61% Li₂O
Surrounding European Lithium Limited’s
Wolfsberg lithium deposit with 11MT at
1.0% Li₂O - JORC

¹ Satellite Projects – refer JDR ASX Announcement dated 14 March 2019
² Weinebene Project – refer JDR ASX Announcement dated 19 February 2019

Austrian infrastructure and exploration licenses location map

Austrian Projects

PROJECT AREA	NUMBER OF LICENSES	LICENSES AREA (KM ²)	HIGHEST Li ₂ O GRADE SAMPLE	AVERAGE Li ₂ O GRADE SAMPLE	STATUS
Weinebene Project¹	60	27.528	3.39%	1.61%	Brownfield opportunity with near term resource potential
Satellite Projects²					
Millstätter – Seerücken – Spittal Mittereck – Pallbaueralm Hohenwart St. Radegund (Garrach) Mitterberg Falkenberg Glanzalm – Ratzell - Poling Klementkogel Birkfeld	76	36.637	3.88%	1.54%	Greenfield opportunity with potential high grade mill feed opportunity

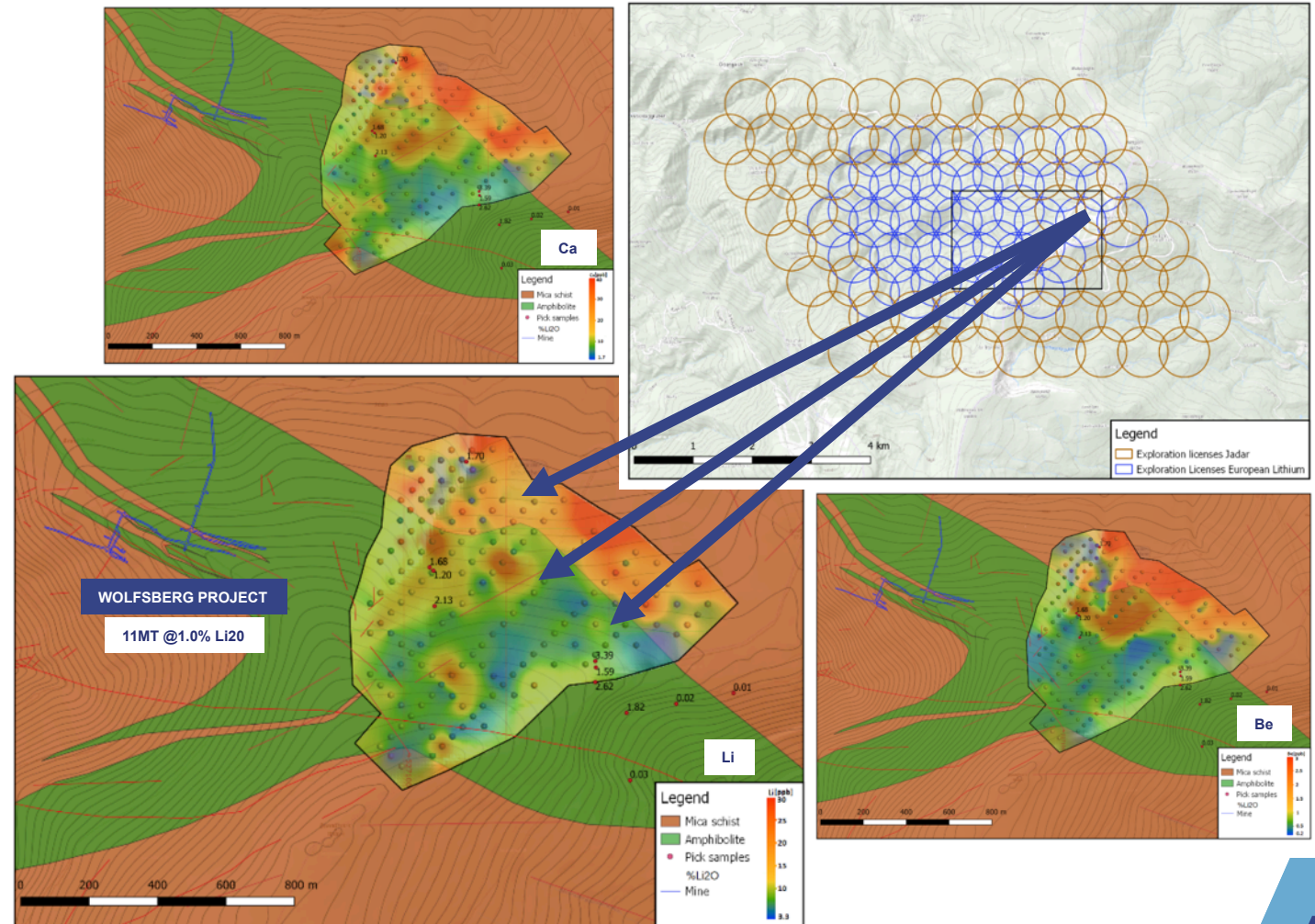
¹ Weinebene Project – refer JDR ASX Announcement dated 19 February 2019

² Satellite Projects – refer JDR ASX Announcement dated 14 March 2019

Projects – Weinebene

PROJECT HIGHLIGHTS

- Weinebene project¹ area surrounds the European Lithium Limited's Wolfsberg lithium deposit with 11MT @ 1.0%Li₂O (refer EUR ASX Announcement dated 3 July 2018)
- Field reconciliation and mapping, rock chips and soil sampling undertaken to-date
- Identified numerous spodumene bearing pegmatites with very high lithium values up to 3.39% Li₂O - indicates the European Lithium resource possibly/likely extends into JDR project
- Soil sampling showing anomalous values in the northern portion of the sampled area to be aligned with the projected trend of the known pegmatite veins – anomaly still open to the north - northeast
- Planned work - soil sampling of north-eastern part; define exploration targets for H2.

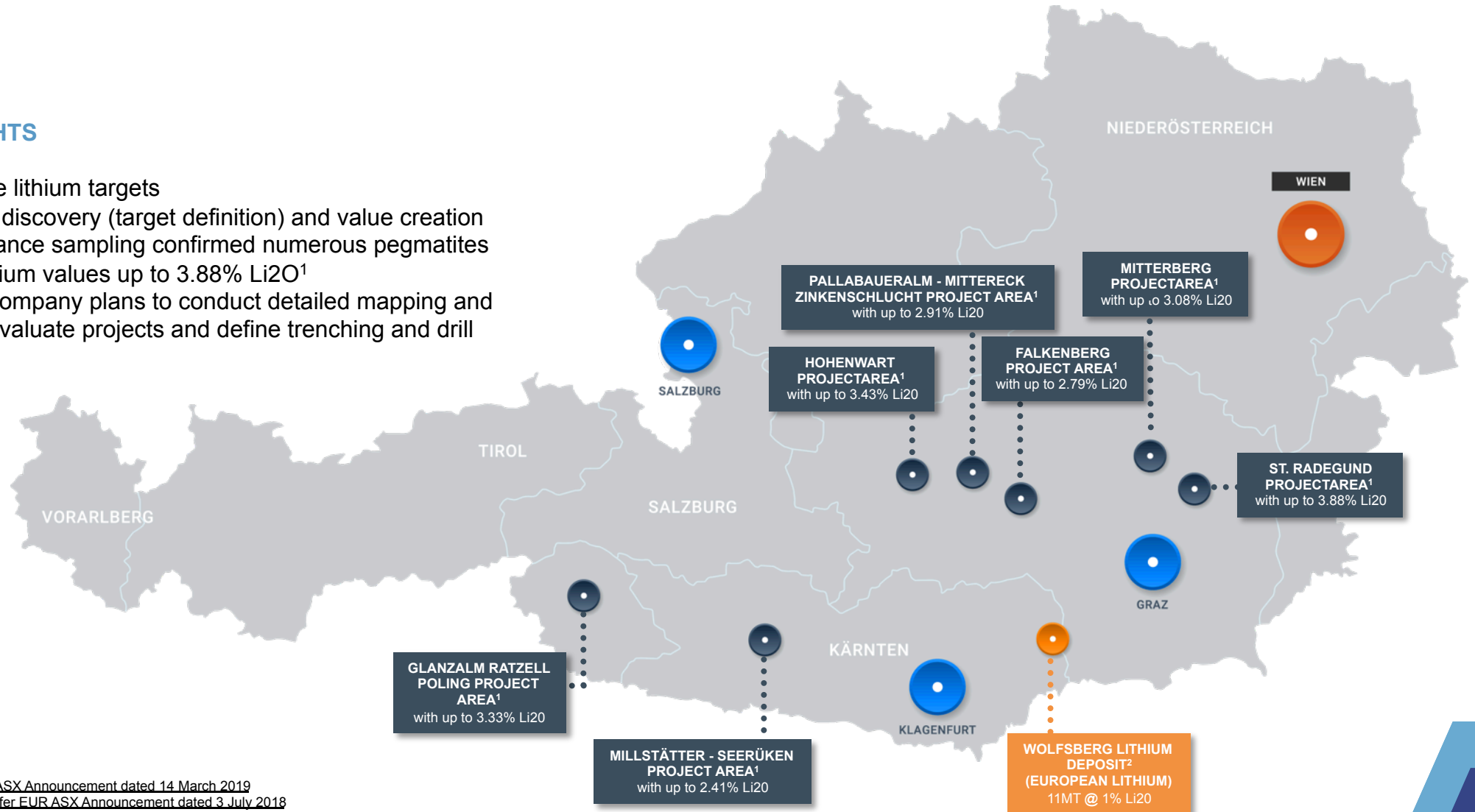


¹ Weinebene Project – refer JDR ASX Announcement dated 19 February 2019

Projects – Satellite

PROJECT HIGHLIGHTS

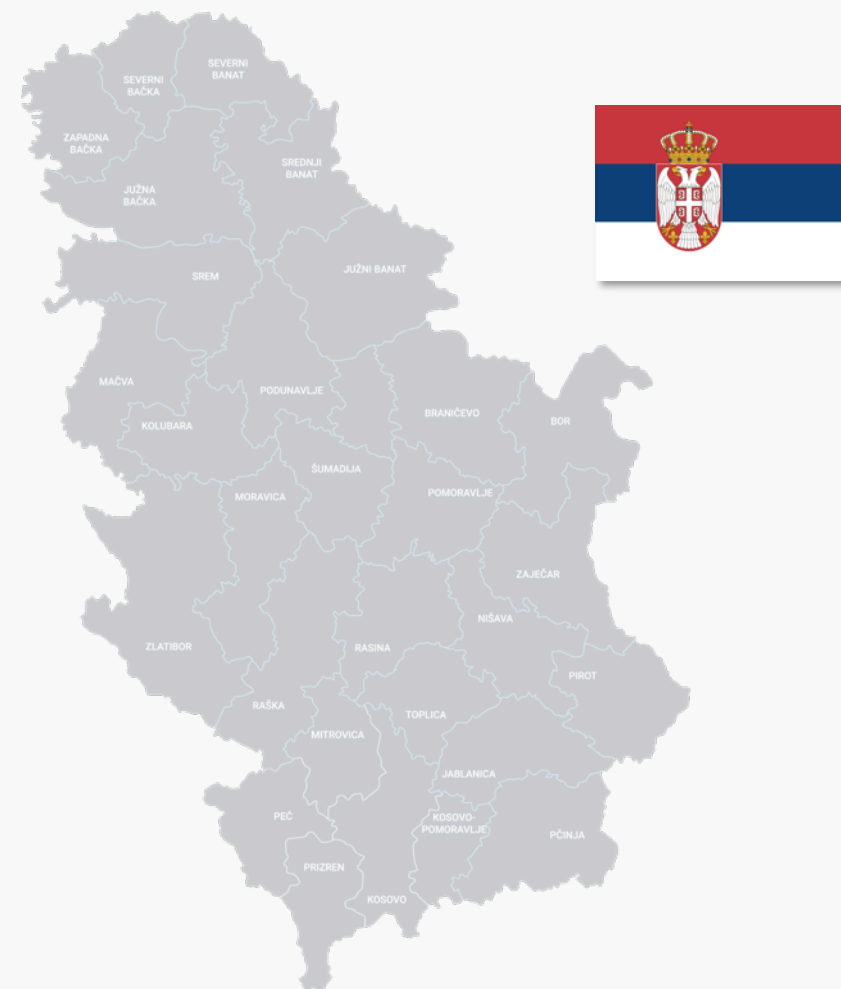
- Unique high value lithium targets
- Short time line to discovery (target definition) and value creation
- Initial reconnaissance sampling confirmed numerous pegmatites with very high lithium values up to 3.88% Li₂O¹
- Planned work - Company plans to conduct detailed mapping and soil sampling to evaluate projects and define trenching and drill targets



1. [Satellite Projects – refer JDR ASX Announcement dated 14 March 2019](#)
 2. [Wolfsberg Lithium Deposit - refer EUR ASX Announcement dated 3 July 2018](#)

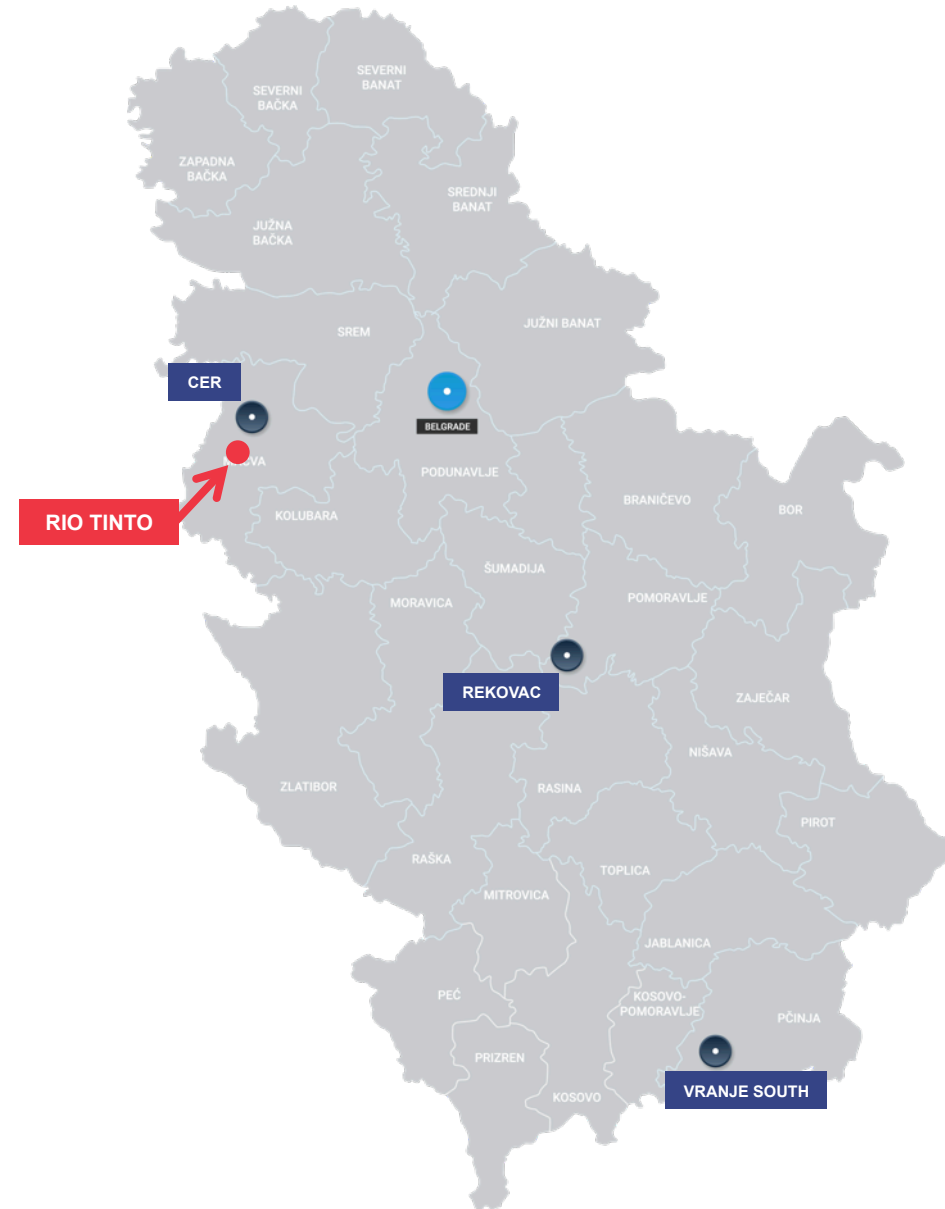
Serbia

Goal to join European Union by 2020	World Bank #47 for overall ease of doing business 2017
At crossroad of Central & South Eastern Europe	Updated mining code in December 2015
Strong mining heritage & history	European quality infrastructure
Aim to increase GDP contribution from mining to 5% by 2020	Supportive government & favourable regulatory environment
Favourable foreign investment laws	No restrictions on foreign ownership
No government participation	No restrictions on flow of capital



Highlights – Serbia

- 3 exploration licences in Serbia (emerging Tier 1 Lithium jurisdiction)
- Substantial exploration area $\approx 258\text{km}^2$
- Serbia is only known source of Jadarite
= new & valuable lithium-borate bearing mineral ($\text{LiNaB}_3\text{SiO}_7(\text{OH})$)
- Rekovac and Vranje South licenses have a very similar geological setting to the Jadar Basin, which is host to Rio Tinto's world-class Jadarite discovery = one of the world's largest lithium deposits
- Experienced local team managing the work program
- Strategically placed for European manufacturers using lithium (In heart of EU manufacturing centre).



Projects

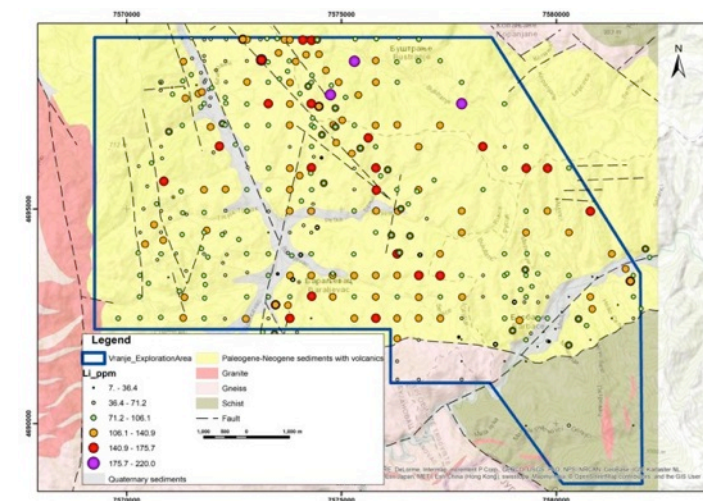
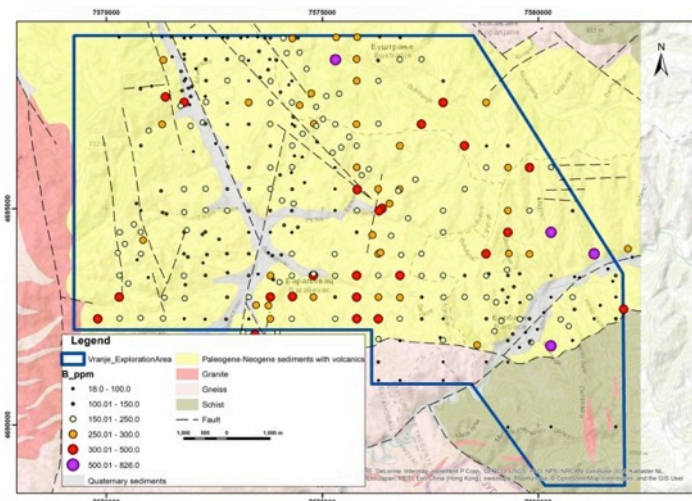
PROJECT	LOCATION	AREA (KM ²)	DEPOSIT TYPE	HIGHEST SOIL SAMPLE VALUES	STATUS
Vranje South ¹	South Vranje, South Serbia	90.4	Hydrothermal Sedimentary	+800ppm Borate and 220ppm Lithium	Targets defined and targeting T1 potential (Jadar Like deposits)
Rekovac	Paraci, Central Serbia	75.4	Hydrothermal Sedimentary	N/A	Targets defined and targeting T1 potential (Jadar Like deposits)
Cer	Loznica, West Serbia	92.8	Pegmatite	N/A	Pegmatites defined and sampling underway to define spodumene mineralisation
TOTAL		258			

1. Vranje South – refer JDR ASX Announcements dated 14 November 2018 and 20 August 2018

Projects – Vranje South¹

PROJECT HIGHLIGHTS

- Project hosts a sedimentary basin with hydrothermal to metasomatically altered volcanogenic-sedimentary deposits
- Jadar Resources is 1st mover within the entire basin - has not been tested for Li-B mineralisation to date despite strategic position and geology
- Targeting a world class deposit akin to Rio Tinto's Jadar Deposit (Inferred Resource of 135.7 Mt @ 1.86% Li₂O and 15.4% B₂O₃ now in PFS)²
- 2 phases of sampling and mapping undertaken to date
- Numerous target areas defined with **very high** values of both Li and B present in soil samples
- Highest values include **+800ppm Borate and 220ppm Lithium** in soil sampling
- Good correlation between B and Li anomalism throughout permit
- Ongoing activities – possibly including geophysics – in near term to define drill targets for 2H 2019 program
- Further ground applied for– strategically secure entire basin (ca 700km²).

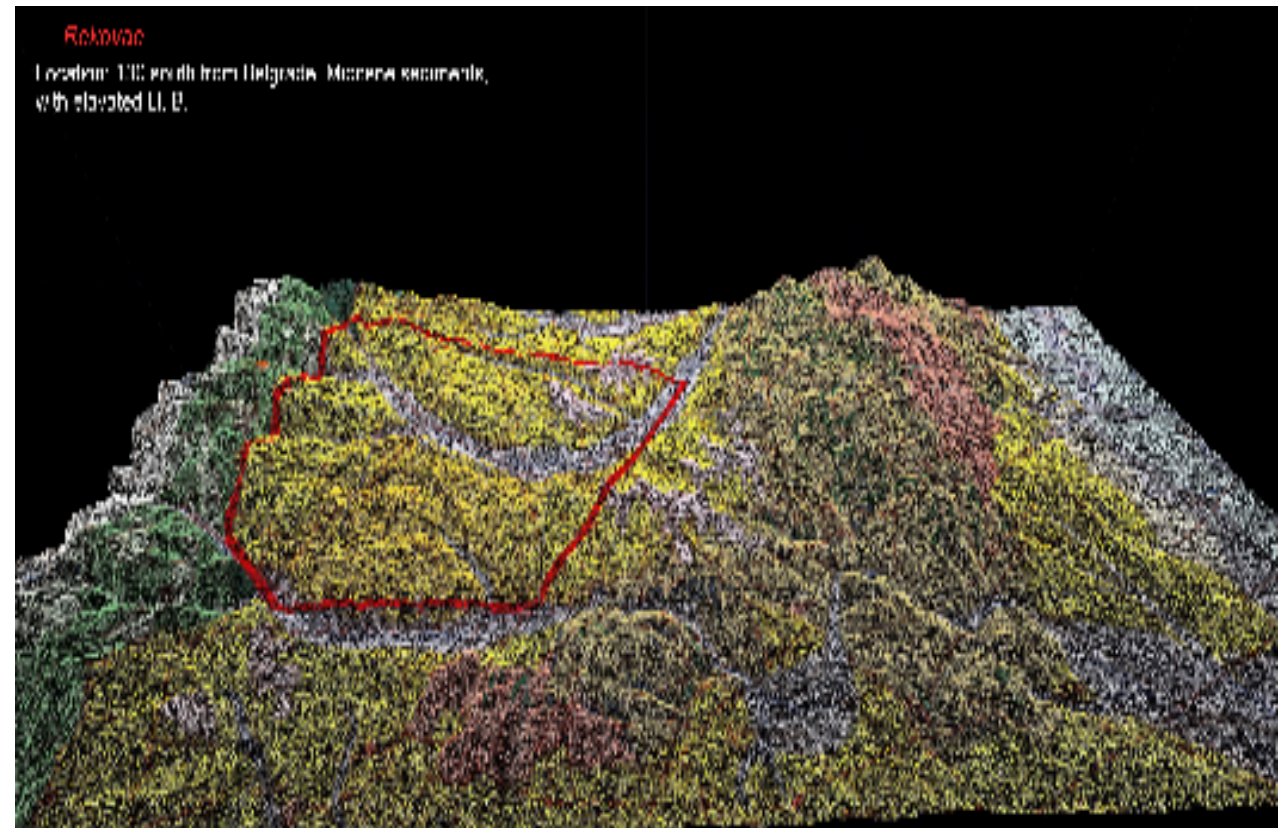


1. Vranje South – refer JDR ASX Announcements dated 14 November 2018 and 20 August 2018
 2. https://www.riotinto.com/documents/180321_Presentation_Andrew_Latham_Lithium_Battery_Metals_Conference.pdf

Projects – Rekovac

PROJECT HIGHLIGHTS

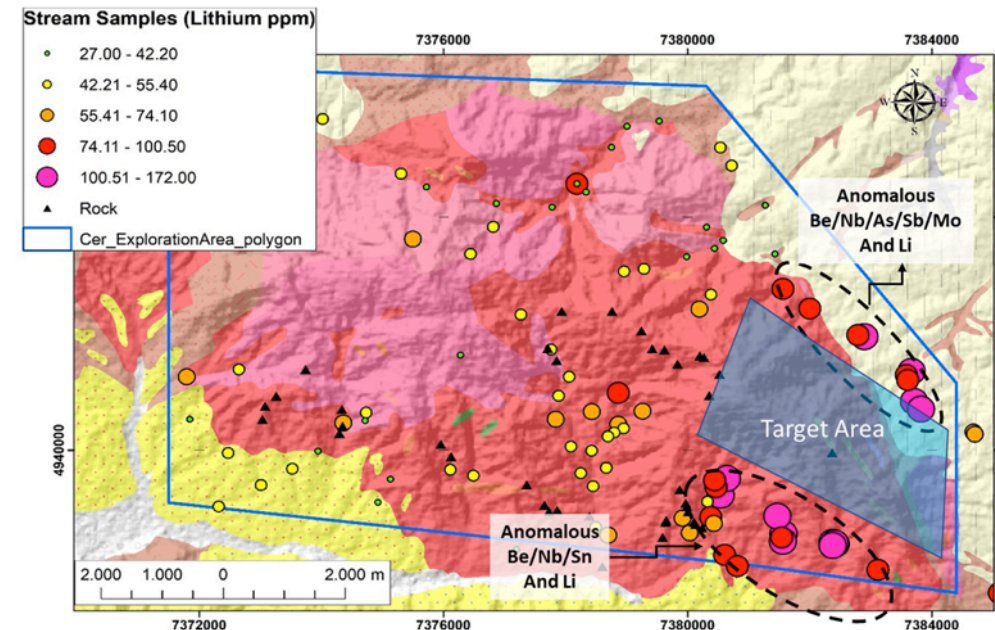
- Project composed of Miocene sediments which are very similar setting to Jadar Basin, with potential to contain lithium – borates mineralisation
- Two phases of soil sampling have defined a target area in central part of permit
- Strong correlation between lithium and borate soil anomalies
- Ongoing activities – possibly including geophysics – in near term to define drill targets for 2H 2019 program.



Projects – Cer¹

PROJECT HIGHLIGHTS

- Proximal to known world class mineralization
- Excellent road and railway infrastructure nearby
- Numerous pegmatite fields mapped out by Government surveys
- Granitoid Complex shows metallogenic association with Lithium
- Initial reconnaissance sampling delineated target areas which will be focus of next phases of work
- Follow up work sampling recommencing Q2 2019 to define detailed targets.



1. [Cer—refer JDRASX Announcements dated 8 July 2018](#)

Next Steps

AUSTRIA

Weinebene Project

- Soil sampling of the north-eastern part – outline previously identified Li, Be, Cs anomaly; define exploration targets for H2 2019

Satellite Projects

- Detailed mapping and soil sampling of the satellite projects; project prioritization, and define trenching and drilling targets H2 2019

SERBIA

Vranje South & Rekovac Projects

- Field mapping and of geophysical surveys
- Evaluate basin geometry on Rekovac and Vranje South prior to drill testing H2 2019

Cer Project

- Detailed mapping and trenching to define drill targets on Cer

CORPORATE

- Continue to evaluate battery metals opportunities within the European region
- Engagement with major investors/shareholder in Europe and the European/London markets
- Industry and government interface. Building on trends in electric vehicle markets.

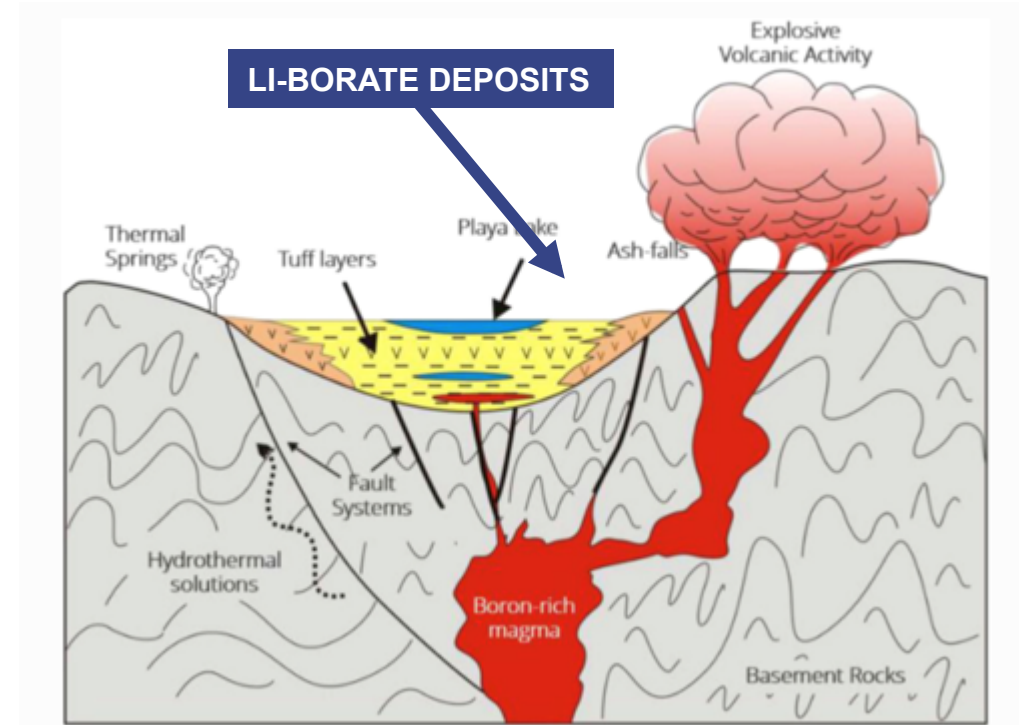


APPENDIX

Targets

JADAR STYLE LITHIUM-BORATE

- Jadar Deposit is essentially a borate deposit with high grade lithium co-product
- Borate deposits form from hydrothermal fluids associated with volcanic activity and granites in arid tectonic basins
- Typically associated with fine-grained, lacustrine sediments, evaporates, clays and sands
- Have kilometre scale footprints
- Deposits associated with basin scale faults that provided fluid conduits
- Testing will require reconnaissance drilling of the basin sequence
- Potentially prospective accumulations of sediments exist at Rekovac and Vranje South
- Additional data review and field visits are required to ascertain the prospectivity of these sedimentary packages.



Genetic Model for Borate +/- Lithium deposit formation, From: Helvacı, C., 2015, *Geological Features of Neogene Basins Hosting Borate Deposits: An Overview of Deposit and Future Forecast, Turkey*. Bull. Min. Res. Exp., 151: pp 169-215

Licences in a very similar geological setting to a World-Class Deposit

RIO TINTO'S JADAR PROJECT

- World-class lithium borate deposit
- Unique Jadarite deposit near Loznica
- Ranked as one of the largest global lithium deposits in world (due to high lithium & boron concentrations)
- Rio Tinto spent US\$90m+ to date
- Currently in prefeasibility stage
- Production could commence by 2023
- Could supply 10% of global lithium demand

Source: "Jadar Project Fact Sheet", Rio Tinto, March 2017

≈Rekovac and Vranje South licences in very similar geological setting to Rio's Jadar Project

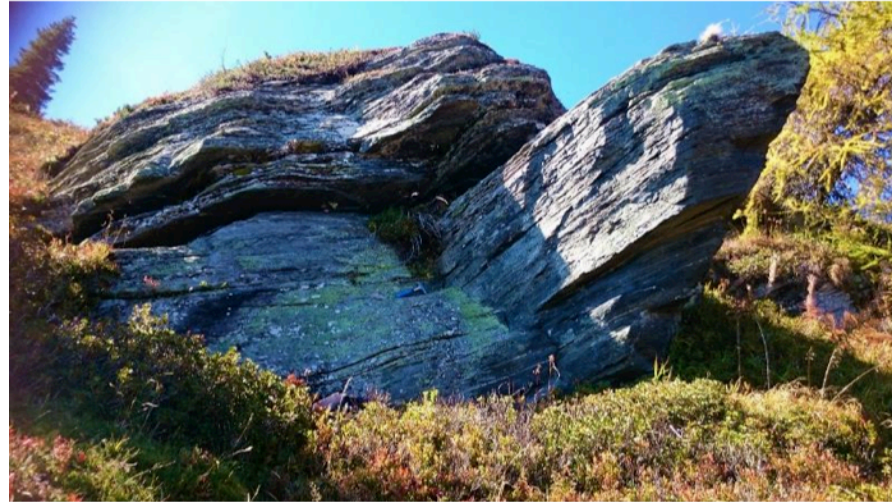
“Rio Tinto powers up Serbian lithium mine for car battery boom”

AFR, Feb 2017



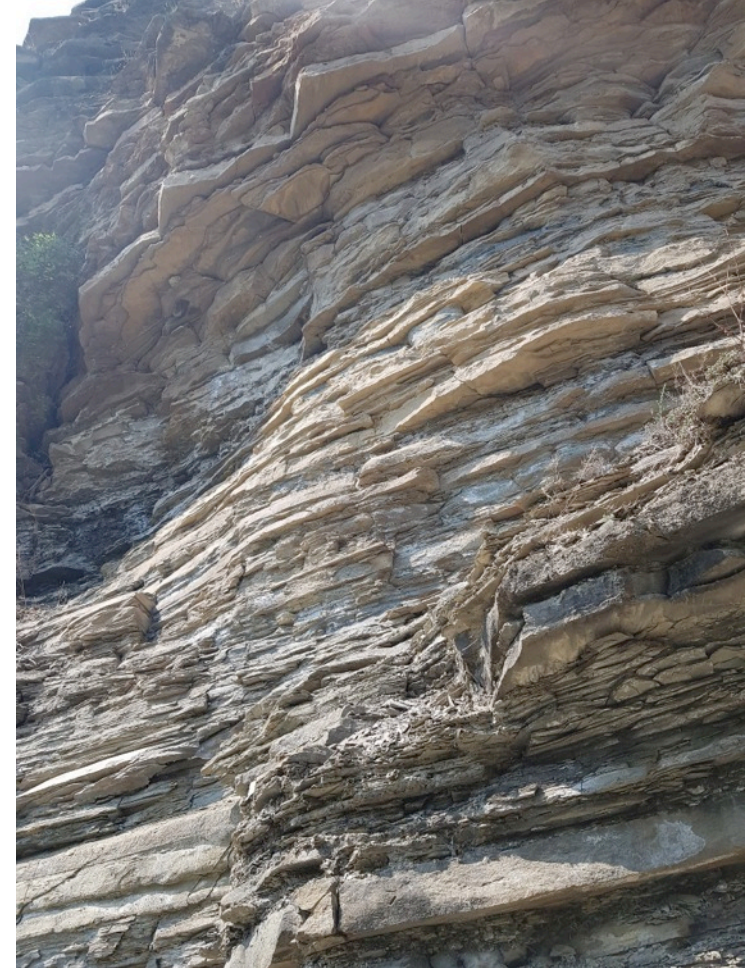
Field Photos from Austria

Jadar Lithium



Field Photos from Serbia

Jadar Lithium





Jadar Lithium

LUKE MARTINO

CHAIRMAN

luke@jadarlithium.com.au

Mobile: +61 (0) 403 635 555