

30 April 2019

## **QUARTERLY ACTIVITIES REPORT**

### **MARCH 2019**

#### **HIGHLIGHTS**

- **2019 exploration program underway, including review of historic data at Undal and Tverfjellet, following strategic review of tenement package and renewal of key exploration permits**
- **Application submitted for a new exploration permit at the Company's highly prospective Tverfjellet Project**
- **In addition to developing its Norwegian Projects, Company reviewing potential acquisitions and investments across a range of commodities and jurisdictions**

During the Quarter, Koppar Resources Limited (ASX:KRX) (Koppar or the Company), built on the technical review of Koppar's extensive copper-zinc portfolio in Norway by highly respected geological consultant Grant "Rocky" Osborne. Particular focus was on the compilation of historical data across its Tverfjellet and Undal Projects (Figure 1) for the purpose of delineating drilling targets.

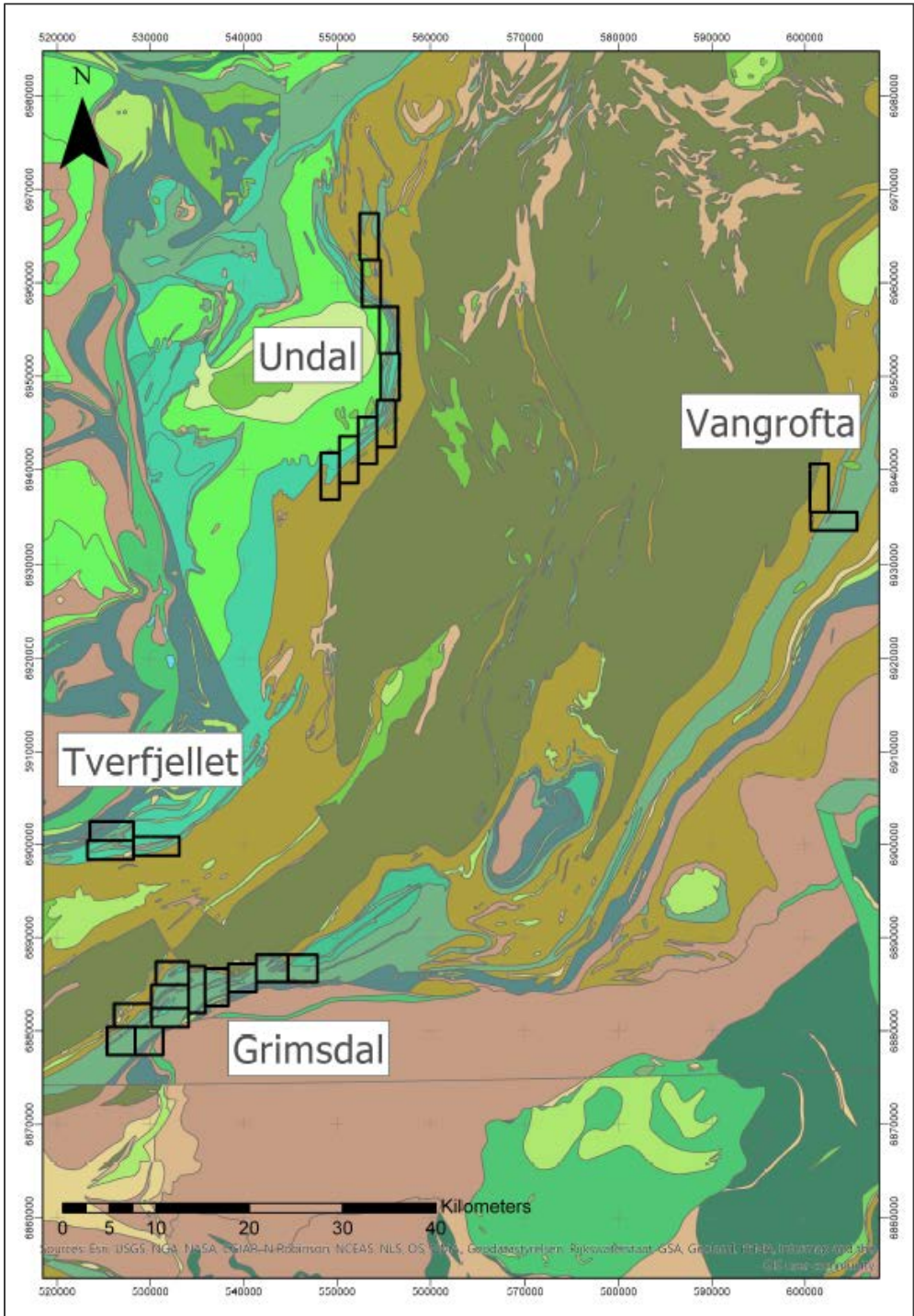
The findings from the Tverfjellet review were released subsequent to the end of the Quarter (see ASX Announcement 12 April 2019) and confirmed the prospectivity of the project. The Company believes that previous work has successfully defined the target horizon and the application of modern day geochemical and geophysical techniques may be able to highlight key indicators for base metal mineralisation.

Koppar plans to systematically advance the Tverfjellet project via field work to rank and prioritise historical targets, geophysical techniques to better delineate the orientation of conductive bodies at these targets and finally drill testing of the highest priority targets. Given the success of the historical soil sampling programme geochemical techniques will also be trialled.

In addition to developing its Norwegian projects, the Company continued to review potential acquisitions and investments across a range of commodities and jurisdictions.



Figure 1: Overview of Koppa's renewed tenement holding and the focus of the Company's 2019 Norway exploration program underlain by regional 1:250,000 mapping by the Norwegian Geological Survey





During the Quarter, as a result of Mr Osbourne' technical review, the Company submitted an application for an additional permit at Tverfjellet.

The Tverfjellet Project was one of the areas identified by Mr Osborne as highly prospective. The deposit is approximately 1.8 km in length and was in operation from 1968 until 1993 producing circa 15 Mt at 1.0% Cu, 1.2% Zn, 0.2% Pb and 36% sulphur (NGU Ore Database). At its peak, the NGU reports the Tverfjellet mine was the largest producer of pyrite concentrate, chalcopyrite and sphalerite in Norway, and is reported to be one of the largest stratiform base metal sulphide deposits within Norway.

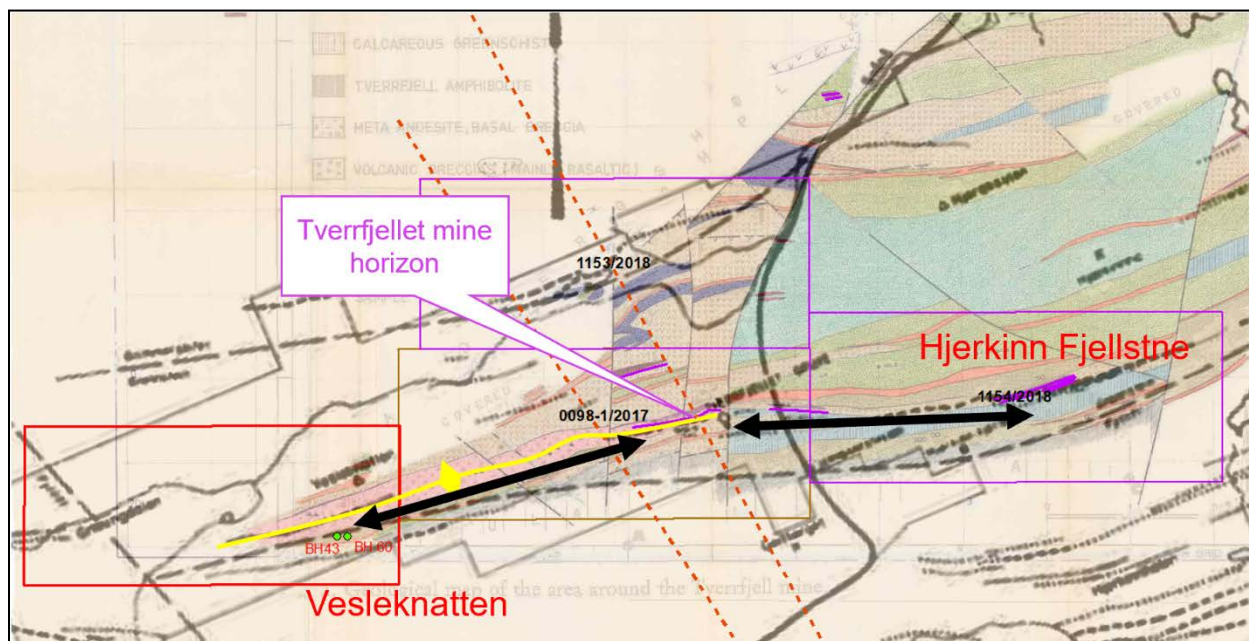
The Tverfjellet mine lies midway between two mapped mineralized exhalites at Vesleknatten and Hjerkin Fjellstne, both located approximately 4km from Tverfjellet (2). The exhalative sulphide horizon located 4km west of the Tverfjellet mine is hosted within a breccia which appears to be developed on the same chronostratigraphic horizon as the Tverfjellet mine deposit suggesting that the andesite body is not extrusive but indeed a sub-volcanic intrusive sill. This is a classical setting for VHMS mineralization (e.g. a dacite sill is coeval with and lies immediately underneath the MesoArchaean Sulphur Springs VHMS), and even the 4km spacing is a well-known periodicity for VHMS deposits (e.g. Triumph, Teutonic Bore, Jaguar, Bentley in the Eastern Goldfields of W.A.). The technical review also highlighted a series of NNW-oriented faults cross the area that can be traced toward the Grimsdalen area 13km SE.

Turam surveys were carried out along the 22 km km long trend of fertile volcanics in the 1960's identifying several EM conductors, a number of which had initial drill testing with no significant results. Accordingly the Company is considering a ground gravity survey across the project area since anomalies would represent key targets as well as additional criteria for ranking historical EM conductors. Historical data indicates that the Tverfjellet deposit is located in the southern flank of a gravity high. This has been interpreted based on thickening of the amphibolite layer in the area of the deposit, which has a density contrast to the surrounding rocks, with elevated base metal contents also found where the amphibolite layer is thicker.

The Tverfjellet-Heimtjønnhø area is considered highly prospective as there may well be fold repeats of ore horizons that may not have been explored, as well as potential west of the mine surrounding the postulated andesite sill. Based on recommendations by Mr Osborne, an application has been submitted for an additional exploration permit at Tverfjellet which covers the western extension of mapped andesite (pink unit in 2) beyond the Vesleknatten occurrence.



Figure 2: Overview of Tverrfjellet Project showing the location of the existing Koppar exploration permits (purple rectangle) and the exploration permit under application (red rectangle). Historical TURAM conductors are shown as black lines, mapped exhalites are shown as magenta lines, and red dashed lines are interpreted gravity linears that link to Koppar's Grimsdalen Project.



#### For and on behalf of the board:

Mauro Piccini  
Company Secretary

#### About Koppar

Koppar is a junior exploration company established with the purpose of exploring and developing copper, zinc and other mineral opportunities. The Company has a conditional right to acquire mineral exploration projects located in the Trøndelag region of Norway, namely the Løkken Project, Tverrfjellet Project, Grimsdal Project, Killingdal Project and Storwartz Project. The Projects are located in a historic mining area, and mining has been previously carried out on several of the projects.

For further information visit [www.kopparresources.com](http://www.kopparresources.com)

#### Competent Persons Statement

The technical information in this announcement complies with the 2012 Edition of the Australasian Code for Reporting of Exploration Results, Mineral Resources and Ore Reserves (JORC Code) and has been



compiled and assessed under the supervision of Miss Rebecca Morgan, the Non-Executive Technical Director of Koppar Resources Ltd. Miss Morgan is a Member of the Australasian Institute of Geoscientists. She has sufficient experience that is relevant to the style of mineralisation and type of deposit under consideration and to the activity being undertaken to qualify as a Competent Person as defined in the 2012 Edition of the JORC Code. Miss Morgan consents to the inclusion in this announcement of the matters based on his information in the form and context in which it appears.

### **Disclaimer**

Some of the statements appearing in this announcement may be in the nature of forward looking statements. You should be aware that such statements are only predictions and are subject to inherent risks and uncertainties. Those risks and uncertainties include factors and risks specific to the industries in which Koppar operates and proposes to operate as well as general economic conditions, prevailing exchange rates and interest rates and conditions in the financial markets, among other things. Actual events or results may differ materially from the events or results expressed or implied in any forward-looking statement. No forward-looking statement is a guarantee or representation as to future performance or any other future matters, which will be influenced by a number of factors and subject to various uncertainties and contingencies, many of which will be outside Koppar's control.

Koppar does not undertake any obligation to update publicly or release any revisions to these forward-looking statements to reflect events or circumstances after today's date or to reflect the occurrence of unanticipated events. No representation or warranty, express or implied, is made as to the fairness, accuracy, completeness or correctness of the information, opinions or conclusions contained in this announcement. To the maximum extent permitted by law, none of Koppar, its Directors, employees, advisors or agents, nor any other person, accepts any liability for any loss arising from the use of the information contained in this announcement. You are cautioned not to place undue reliance on any forward-looking statement. The forward-looking statements in this announcement reflect views held only as at the date of this announcement.

This announcement is not an offer, invitation or recommendation to subscribe for, or purchase securities by Koppar. Nor does this announcement constitute investment or financial product advice (nor tax, accounting or legal advice) and is not intended to be used for the basis of making an investment decision. Investors should obtain their own advice before making any investment decision.





## APPENDIX 1 – LICENSES HELD BY KOPPAR RESOURCES AS AT 30 MARCH 2019

Table 1: List of exploration permits as at 30 March 2019

NAME	STATUS	PERMIT TYPE	AREA (KM2)
Hoydalsgruva 100	Granted	Exploration	4.0
Meldal 100	Granted	Exploration	5.3
Svorka 100	Granted	Exploration	1.4
Lokken 100	Granted	Exploration	8.6
Killingdal	Granted	Exploration	4.5
Nygruva	Granted	Exploration	9.14
Grimsdalen	Granted	Exploration	9.86
Storwartz	Granted	Exploration	5.20
Tverrfjellet	Granted	Exploration	9.99
Fløttum 101	Granted	Exploration	10.0
Fløttum 102	Granted	Exploration	10.0
Fløttum 103	Granted	Exploration	10.0
Rødalen 101	Granted	Exploration	10.0
Rødalen 102	Granted	Exploration	10.0
Undal 101	Granted	Exploration	10.0
Undal 102	Granted	Exploration	10.0
Nyberget 101	Granted	Exploration	10.0
Nyberget 102	Granted	Exploration	10.0
Meldal 101	Granted	Exploration	10.0
Meldal 102	Granted	Exploration	10.0
Meldal 103	Granted	Exploration	10.0
Meldal 104	Granted	Exploration	10.0
Lomsjødalen 101	Granted	Exploration	10.0
Lomsjødalen 102	Granted	Exploration	10.0
Innerdalen 101	Granted	Exploration	10.0
Innerdalen 102	Granted	Exploration	10.0
Innerdalen 103	Granted	Exploration	10.0
Innerdalen 104	Granted	Exploration	10.0
Klinkengruva 101	Granted	Exploration	10.0
Klinkengruva 102	Granted	Exploration	10.0
Killingdal 101	Granted	Exploration	10.0
Killingdal 102	Granted	Exploration	10.0
Killingdal 103	Granted	Exploration	10.0
Killingdal 104	Granted	Exploration	10.0
Killingdal 105	Granted	Exploration	7.5
Klasberget 101	Granted	Exploration	10.0
Klasberget 102	Granted	Exploration	10.0
Finnlandsvollen 101	Granted	Exploration	10.0



NAME	STATUS	PERMIT TYPE	AREA (KM2)
Finnlandsvollen 102	Granted	Exploration	10.0
Os 101	Granted	Exploration	10.0
Os 102	Granted	Exploration	10.0
Os 103	Granted	Exploration	10.0
Os 104	Granted	Exploration	10.0
Abrahams gruve 101	Granted	Exploration	10.0
Abrahams gruve 102	Granted	Exploration	10.0
Abrahams gruve 103	Granted	Exploration	10.0
Rødhammer 101	Granted	Exploration	10.0
Rødhammer 102	Granted	Exploration	10.0
Rødhammer 103	Granted	Exploration	10.0
Gressli 101	Granted	Exploration	10.0
Gressli 102	Granted	Exploration	10.0
Gressli 103	Granted	Exploration	10.0
Gressli 104	Granted	Exploration	10.0
Gressli 105	Granted	Exploration	10.0
Løkken 101	Granted	Exploration	10.0
Løkken 102	Granted	Exploration	10.0
Løkken 103	Granted	Exploration	10.0
Løkken 104	Granted	Exploration	10.0
Løkken 105	Granted	Exploration	10.0
Storwatz 101	Granted	Exploration	10.0
Vangrofta 101	Granted	Exploration	10.0
Vangrofta 102	Granted	Exploration	9.8
Roros 101	Granted	Exploration	10.0
Roros 102	Granted	Exploration	10.0
Roros 103	Granted	Exploration	9.8
Roros 104	Granted	Exploration	9.8
Roros 105	Granted	Exploration	10.0
Tverrfjellet 101	Granted	Exploration	9.4
Tverrfjellet 102	Granted	Exploration	10.0
Grimsdalen 101	Granted	Exploration	9.0
Grimsdalen 102	Granted	Exploration	10.0
Grimsdalen 103	Granted	Exploration	8.8
Grimsdalen 104	Granted	Exploration	8.8
Grimsdalen 105	Granted	Exploration	10.0
Grimsdalen 106	Granted	Exploration	8.0
Grimsdalen 107	Granted	Exploration	10.0
Grimsdalen 108	Granted	Exploration	9.0
Grimsdalen 109	Granted	Exploration	9.0



**The mining tenement interests relinquished during the quarter and their location**

None

**The mining tenement interests acquired during the quarter and their location**

Acquired - None

Granted – None

**Beneficial percentage interests held in farm-in or farm-out agreements at the end of the quarter**

Not applicable.

**Beneficial percentage interests in farm-in or farm-out agreements acquired or disposed of during the quarter**

Not applicable.