



COPPER FOCUSED

Active explorer - Cobar Region and Chile

New discoveries - High grade Collerina

Highly prospective properties



A value exposure to an advancing copper story – timely and compelling

COPPER MACRO GAINING MOMENTUM

- Sustained demand growth and new demand sources (renewables, batteries, EVs, etc)
- Industry wide grade declines, resource depletion and underinvestment in new capacity



HELIX HAS BUILT ITS COPPER PORTFOLIO AND CAREFULLY ADVANCED THE PROJECTS THROUGH THE CYCLE

- Now very strongly positioned to capitalise on recent exploration success – ours and regionally
- Cobar region increasingly recognised as the next high-grade base metal hotspot

HELIX'S FLAGSHIP NSW COPPER PROJECTS ADVANCING TO KEY MILESTONES

- Collerina Deposit Central Zone plunge extent now intersected down plunge over 1km and still open at depth
- Regional targets demand more drilling – Yathella, Tindalls, Widgelands & Mundarlo

Retained exposure to large-scale copper projects in Chile

- Fully funded by JV partners

Copper – underpinning renewable energy demand

Clean Capital Structure with a tight register

ASX Code	HLX
Issued Shares	424 million
Unlisted Options (Directors, Management & Staff)	19 million
Market Cap @ A\$0.024ps	\$10m
Cash @ Mar'19	\$1m
Enterprise Value	\$9m

Major Shareholders	%
Yandal Investments	8%
Gee Vee Pty Ltd	7%
Directors & Management	4%
Top 20	36%



DIRECTORS

Peter Lester	Non-Exec Chairman
Mick Wilson	Managing Director
Tim Kennedy	Non-Exec Director
Jason Macdonald	Non-Exec Director

High value exploration potential in a richly endowed province

LARGE FOOTPRINT

Strong presence (1,500km²) in proven copper and gold camps that remain under-explored

ACTIVE EXPLORER

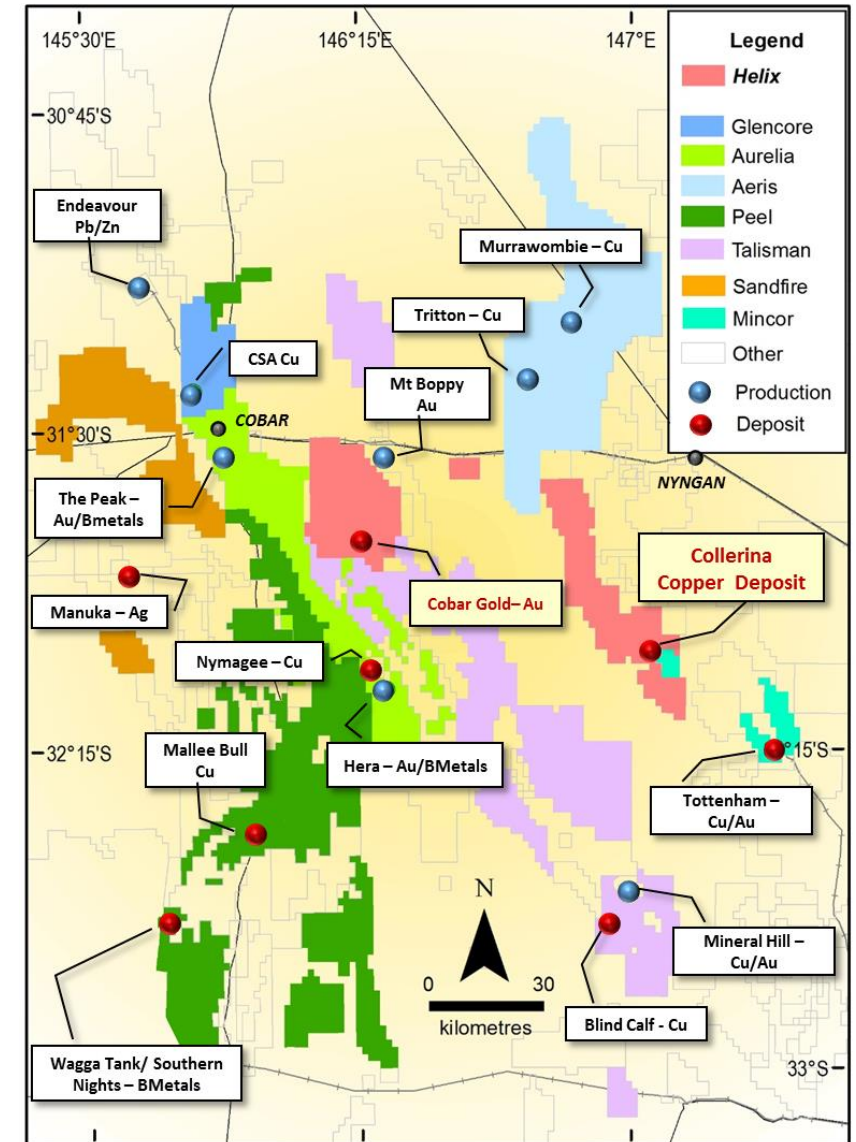
Focused programs advancing high potential prospects, with projects entering pivotal stages.

DISTRICT ATTRIBUTES

High grade mineralisation in short strike length deposits.

Substantial down-dip or down-plunge extents.

Deposits tend to be found in clusters.



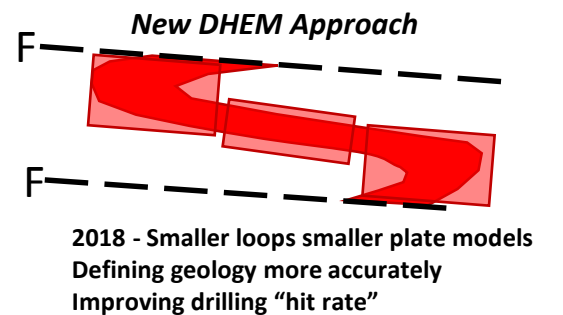
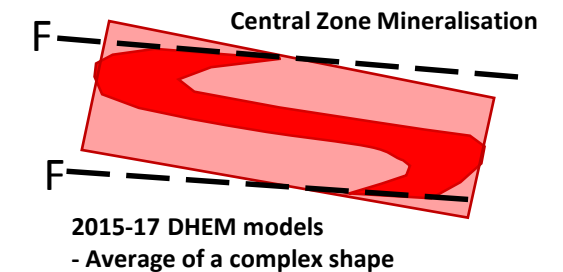
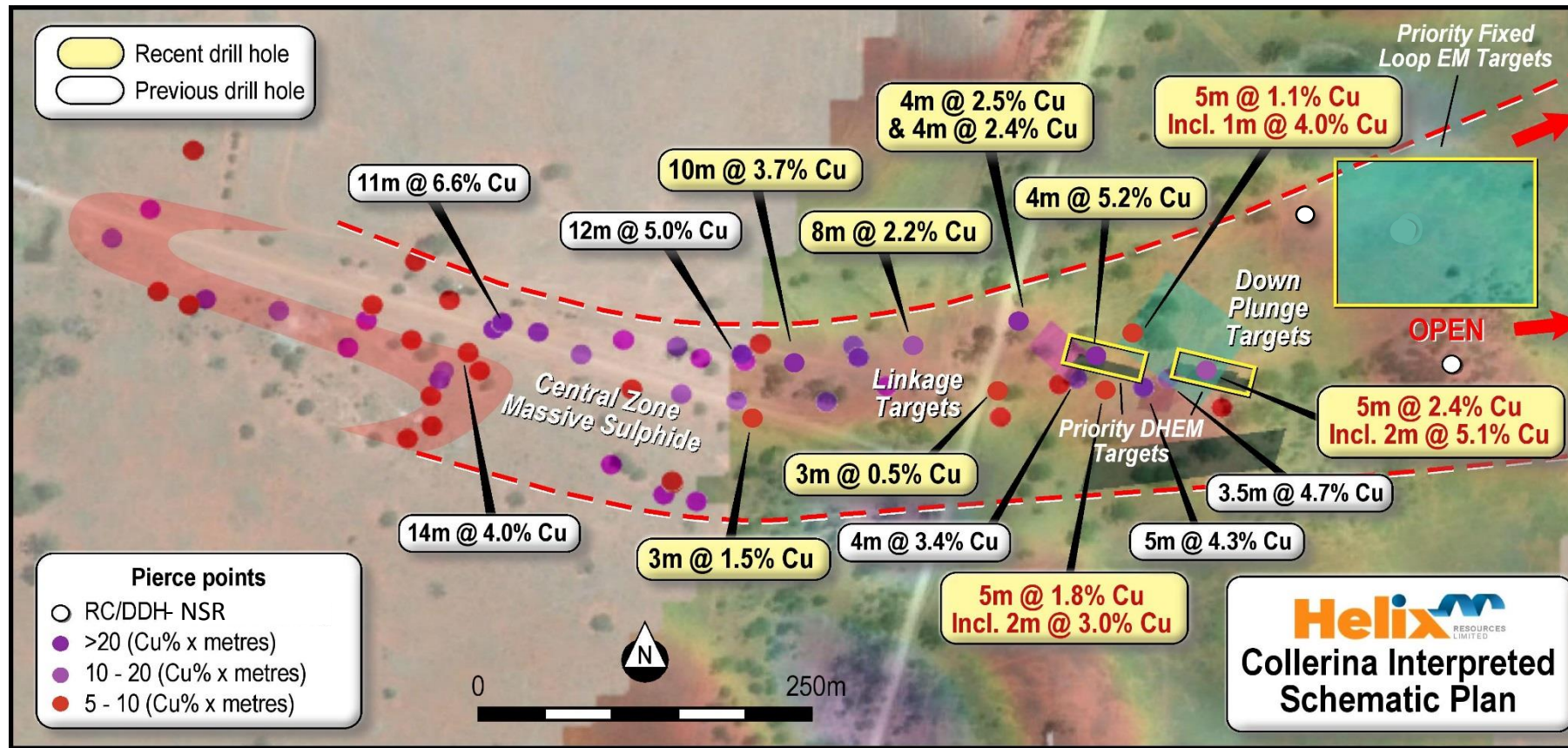


COLLERINA

Cracking the VMS and structural
code at our Flagship Asset



The new geology and structural interpretation – Refined EM Targeting

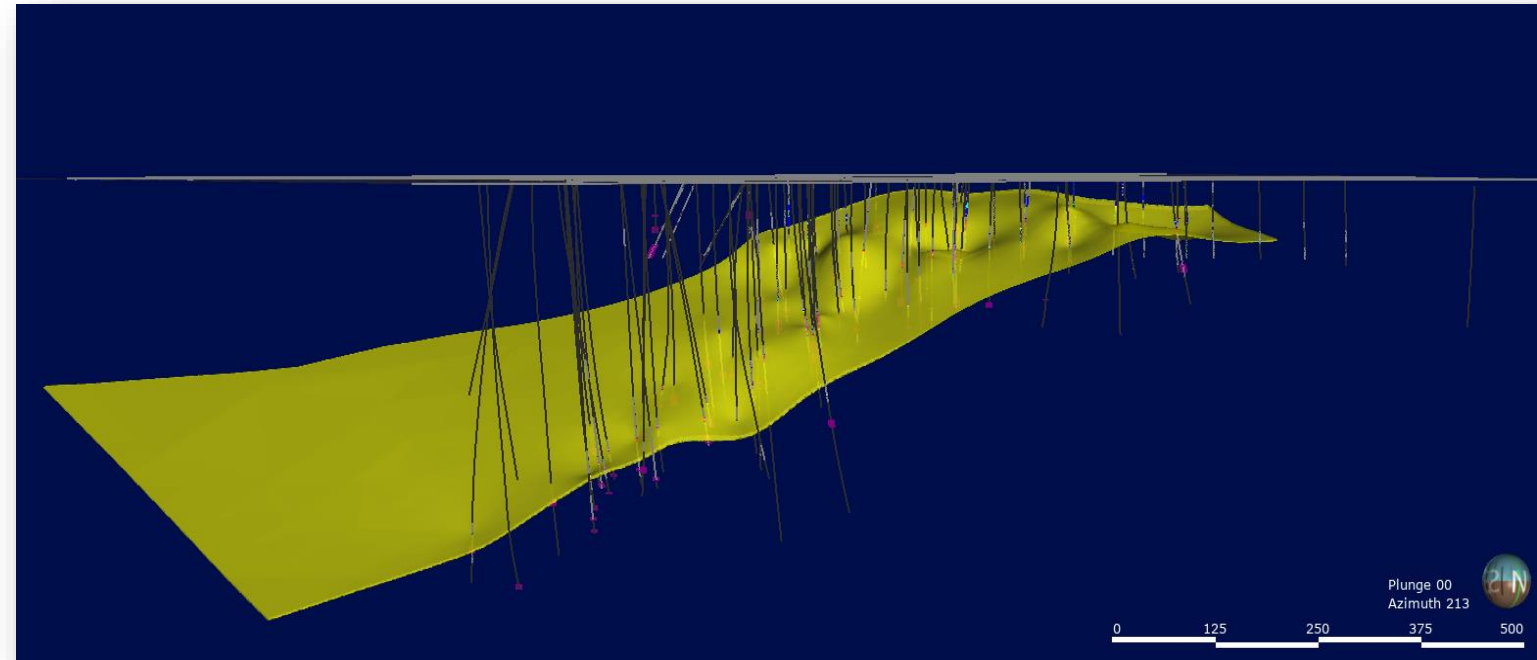


Confidence to continue drill testing EM related plunge and dip targets at depth



Resource modelling and future programs

- Modelling underway.
- Initial resource to concentrate on Central Zone and drilled plunge position.
- Focus initially on maximising grade and geological continuity.
- Lies within the broader Collerina system – well defined at surface and constrained by cross-cutting structures.
- Like others in the district - Opportunities to grow deposit scale with more drilling (up dip, down dip and down plunge).



Leapfrog™ derived geological shape driving the resource modelling

Setting the foundation for high-grade, near surface - Collerina Deposit

Regional Comparison and Context

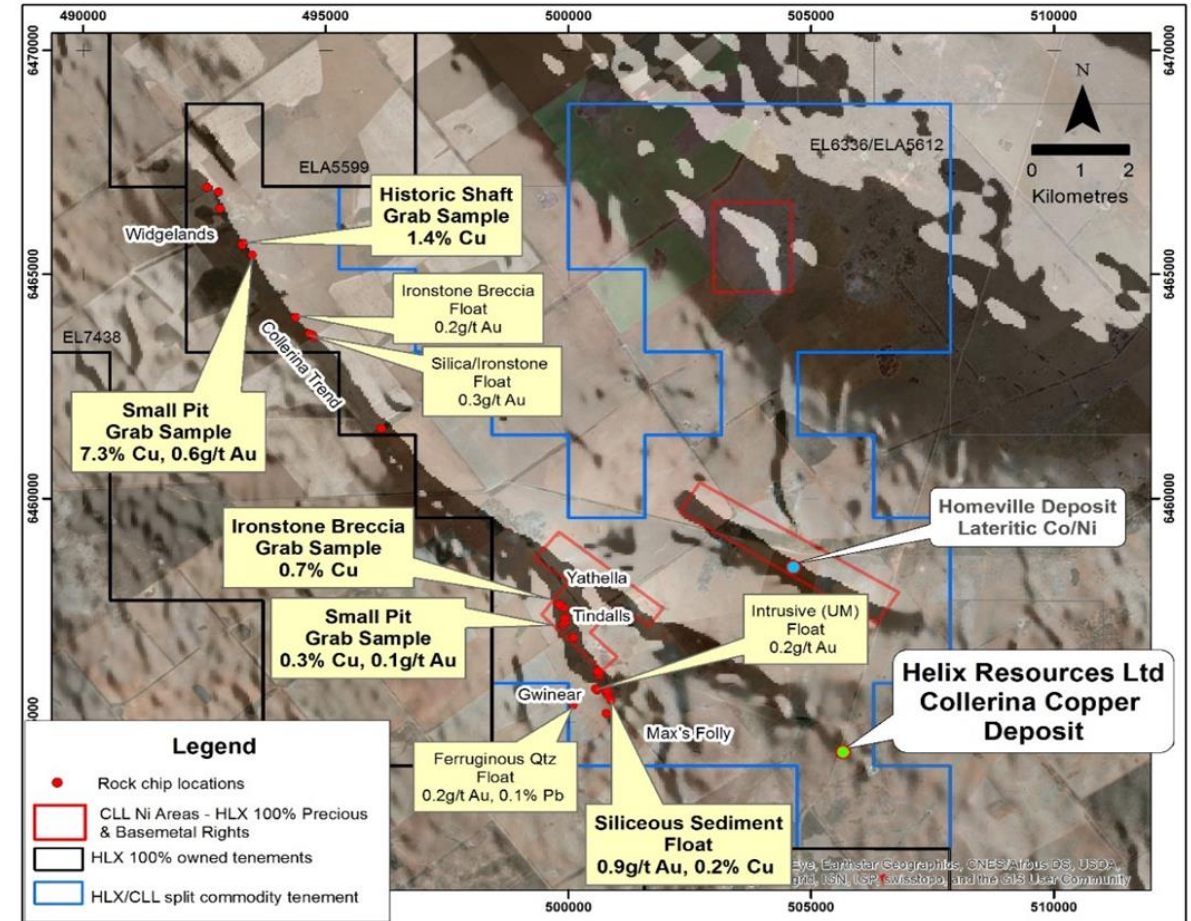
Attributes	Tritton Mine (in Production)	Collerina Deposit
Initial Resource	14Mt @ 2.7% Cu, 0.3g/t Au (380,000t contained Cu)	Scale Emerging from Exploration Breakthrough
Mineralisation	Massive & Banded Sulphide Chalcopyrite (Primary)	Massive & Banded Sulphide Chalcopyrite (Primary)
Strike Length of Main Body	100-300m	250-300m
Depth to Mineralisation	Begins 180m below Surface	Gossan From Surface
Vertical Continuity	Mineralisation defined to over 1.4km below surface	Yet to be determined?
Thickness of Massive Sulphide Mineralisation	2- 30m (Av. Grade 2.7% Cu)	4 - 29m (Ave. Grade 2-3%? Cu)
Discovery Intercept	7 th hole 5m @ 1.8% Cu	2 nd Hole 14m @ 4% Cu
Host Rocks	Metasediments & Mafic Volcanic/Volcanoclastics	Metasediments & Mafic Volcanic/Volcanoclastics
Alteration	Silica & Chlorite	Silica & Chlorite

Regional Opportunities – Collerina Copper trend

- Helix controls 85km of the prospective VMS Belt
- Limited exploration has been conducted on the wider Project Area
- Multiple prospects identified across 3 priority target zones within the 25km “Collerina Copper Trend”
- Helix holds additional 60km of prospective VMS corridor north and south of the main Collerina Trend



Surface Gossan

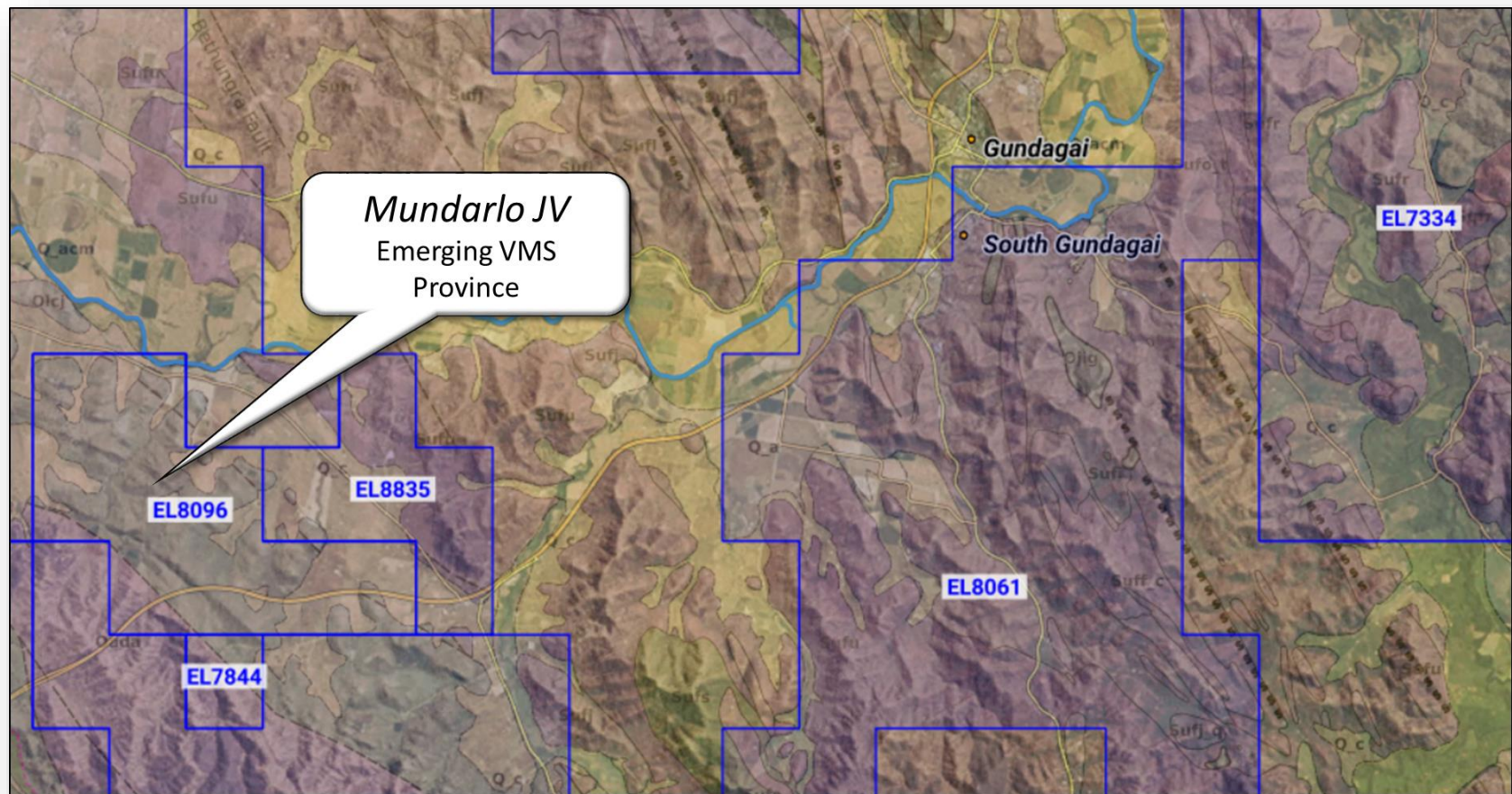


The VMS big picture: potential cluster occurrences

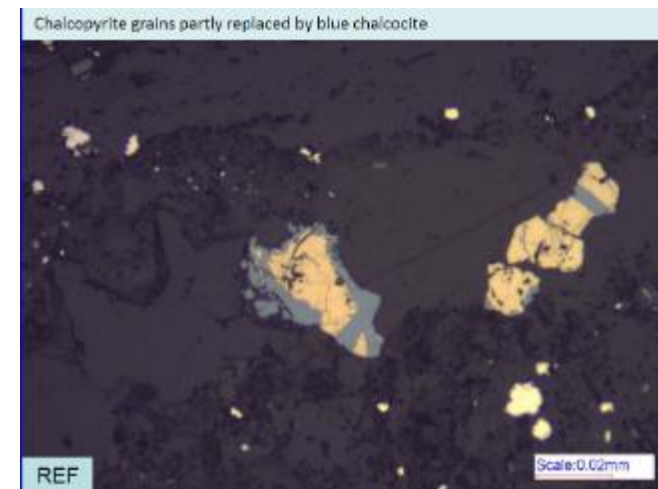
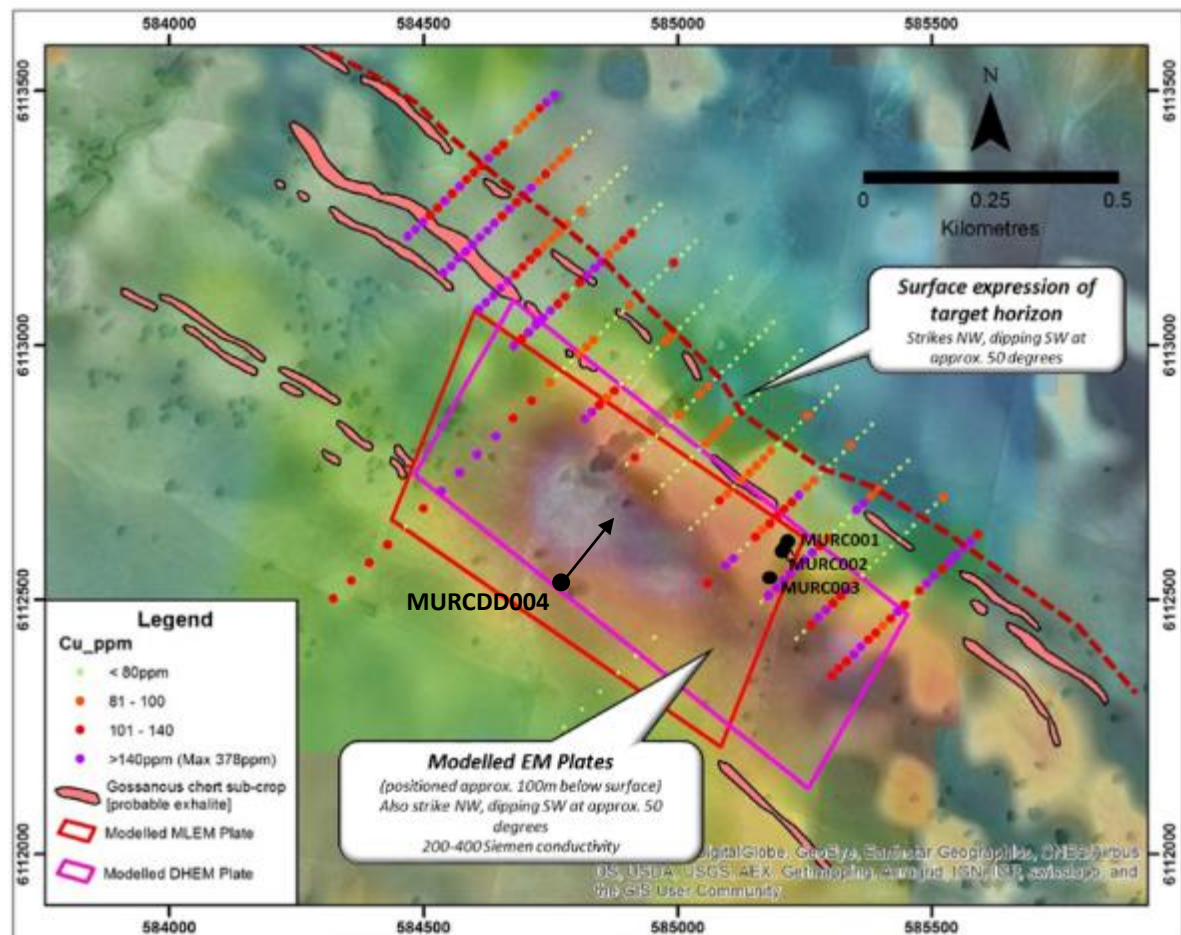


MUNDARLO

Targeting VMS-style base metal
systems in a new province



Bedrock EM conductor is sulphide related – Target is Large



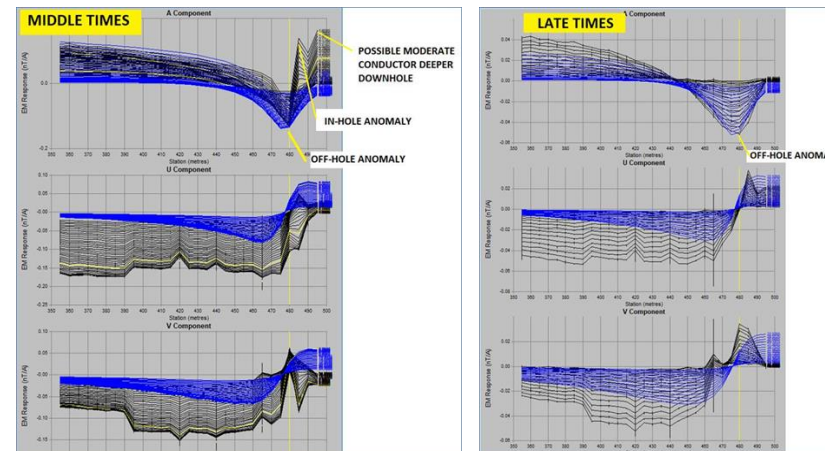
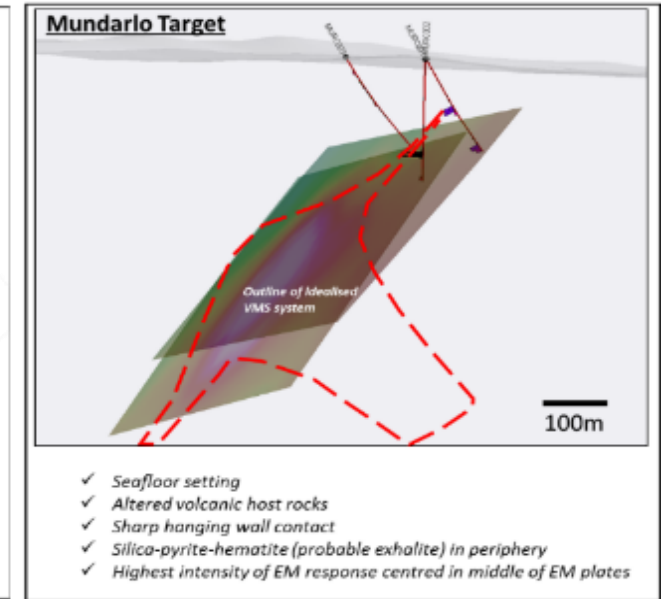
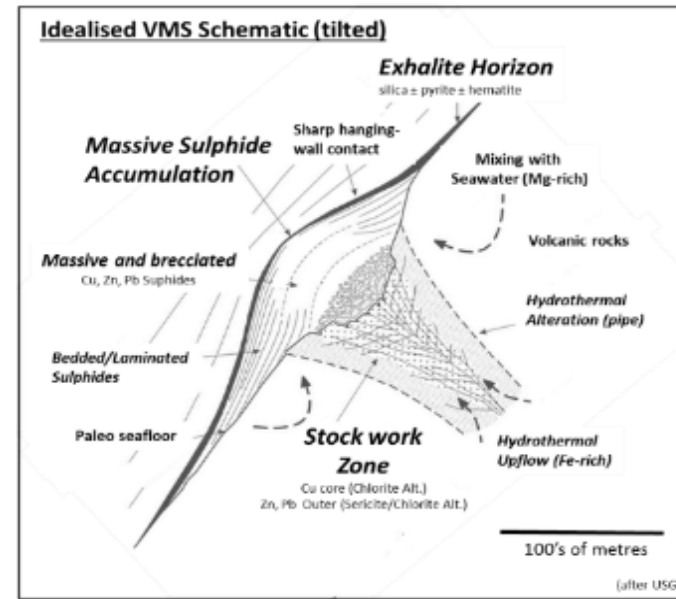
Re-mobilised (?) copper noted in hanging wall rocks

Massive and semi-massive sulphide in silica-rich unit -
Interpreted Periphery of VMS



Large EM Conductor in new VMS belt

- Geology and structural studies confirm VMS provenance
- Strong off-hole conductors present
- NSW Geological Survey assessing Mundarlo System in 1H19.





COBAR

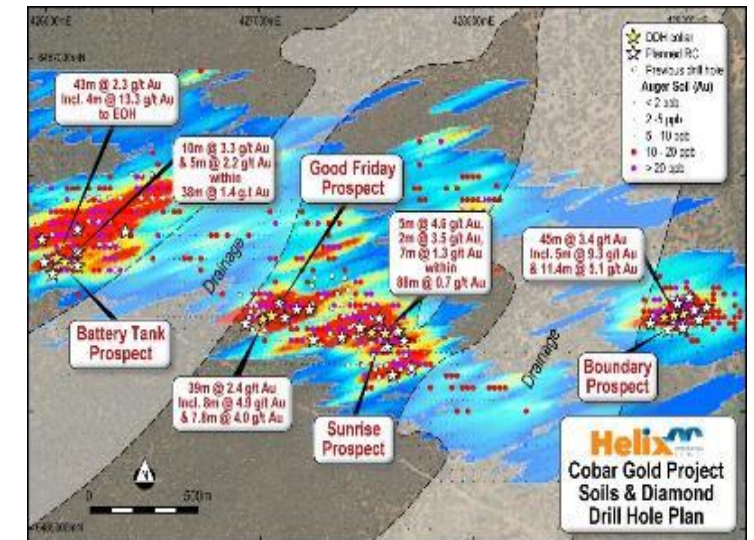
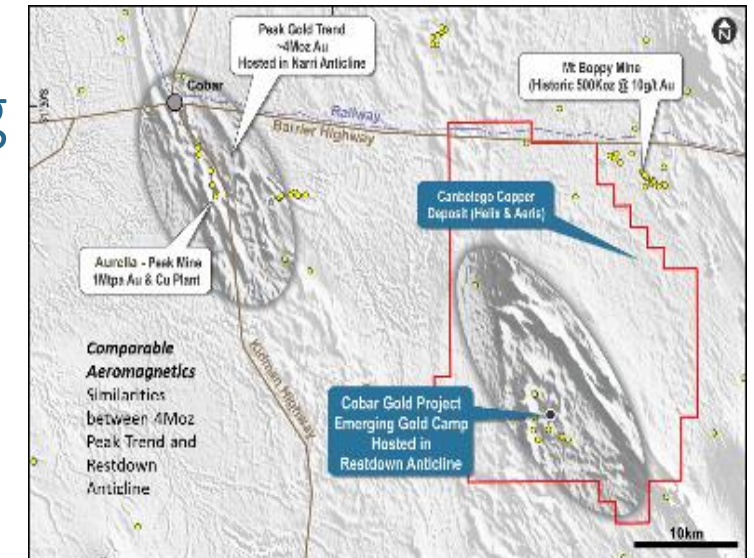
GOLD PROJECT

Large System Potential – Control of Entire
Goldfield – More Regional Targets Emerging



High Prospectivity in compelling geological setting

- Geological model shows evidence for a significant gold system
- New Discoveries - Battery Tank Prospect – Wide zones of gold mineralisation
 - 43m @ 2.3 g/t gold from surface, incl. 4m @ 13.3g/t gold and 14m @ 2.8g/t gold
 - 54m @ 1g/t Au from 9.2m incl. 10m @ 3.3g/t gold incl. 3.3m @ 5.2g/t gold and 5m @ 2.4g/t gold
- High grade gold mineralisation at 5 of the 9 known prospects in the main goldfield, 3 are undrilled
- Potential for depth extensions, Multiple regional targets untested by drilling



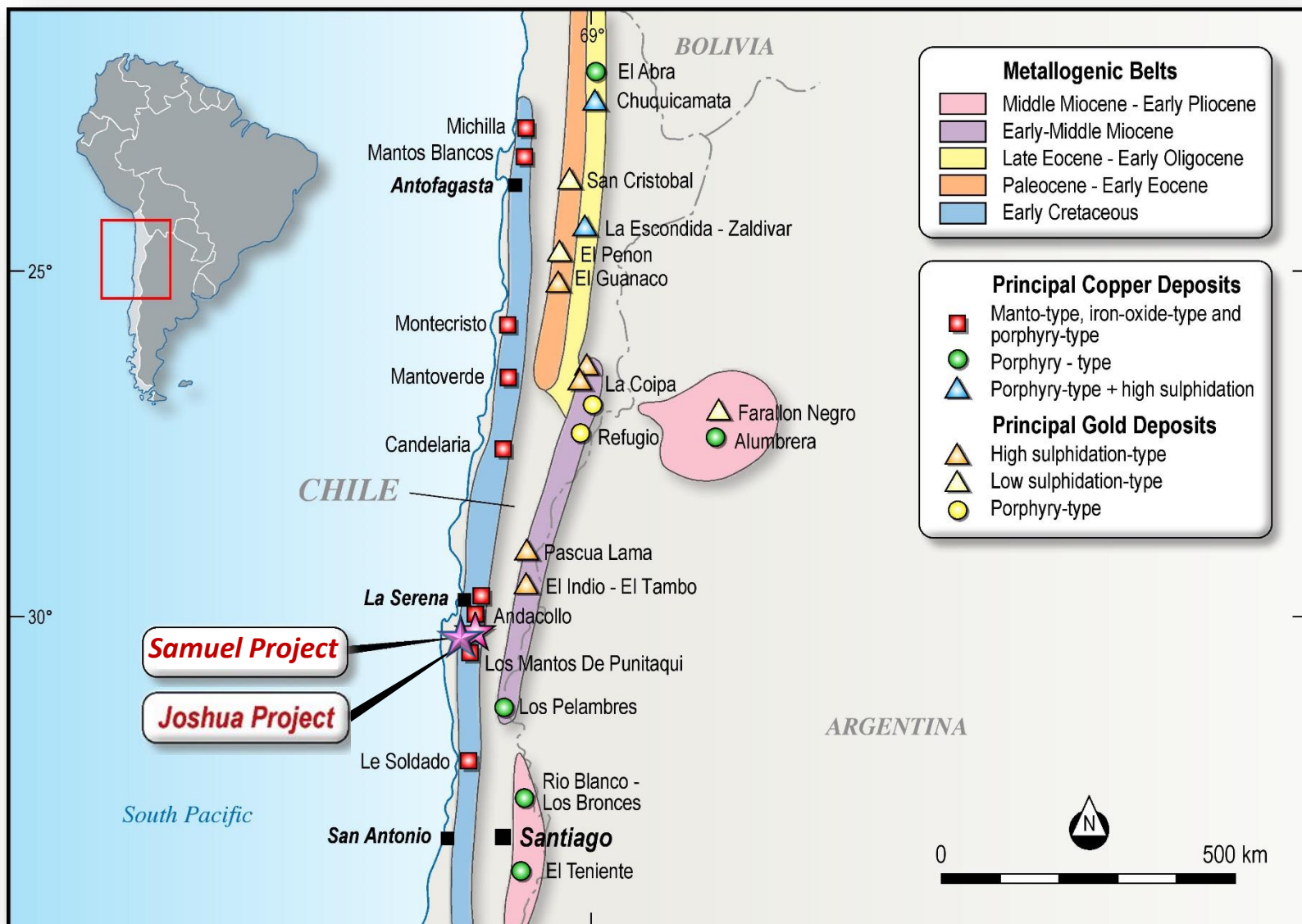
Opportunity to extract value from a well positioned goldfield



CHILE

COPPER JOINT VENTURES

Retained exposure to large copper projects in a world-class jurisdiction

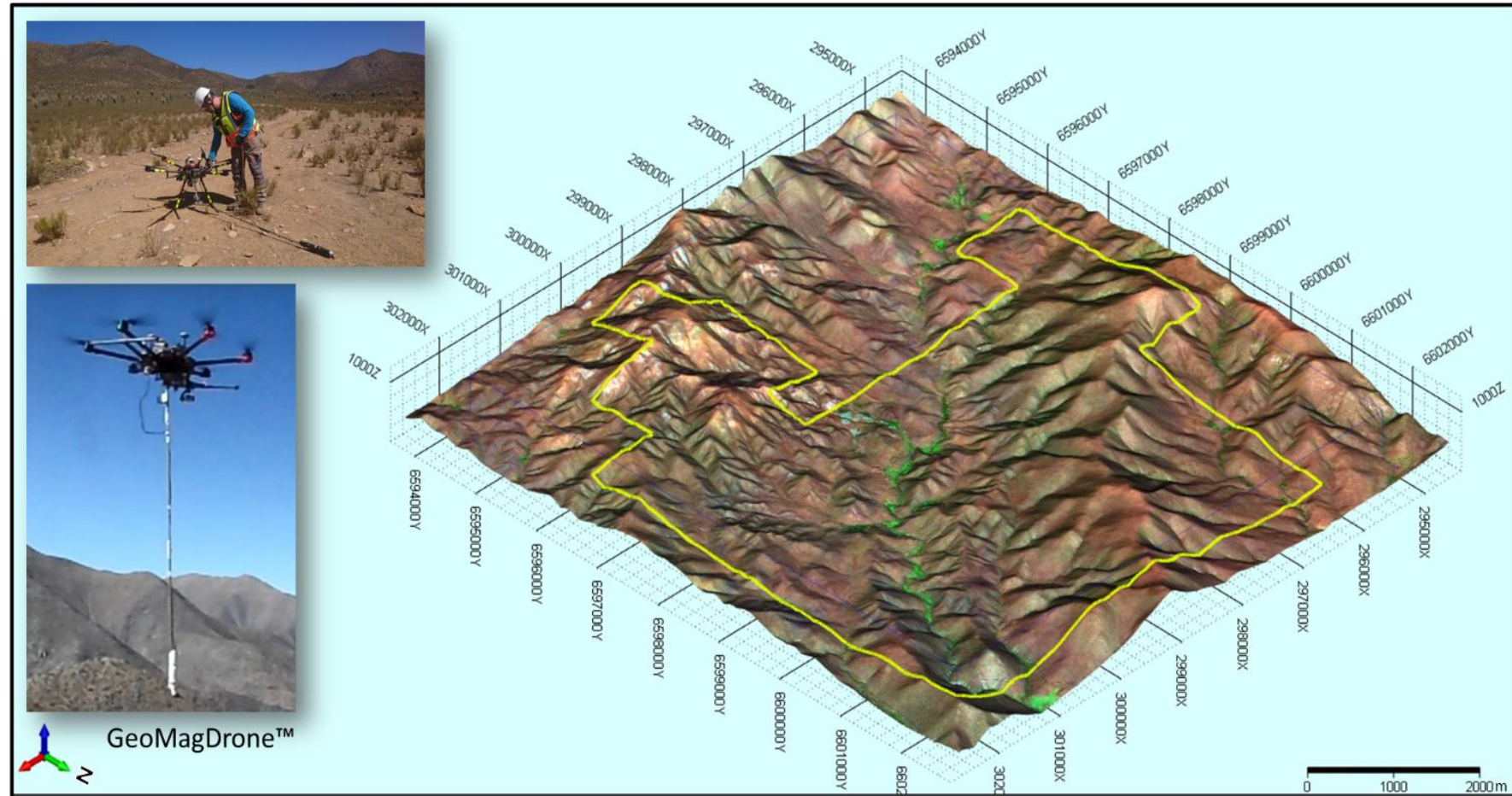


Large Scale Porphyry and Manto Copper Targets

- JOGMEC Funding Partner Helix 40% Equity after \$3.3m spend by 2021.
- Full coverage Drone Aeromagnetic survey completed, large IP Survey completed
- Field structural mapping and sampling completed

JOGMEC FUNDED STAGE 2 DRILLING PROGRAM UNDERWAY

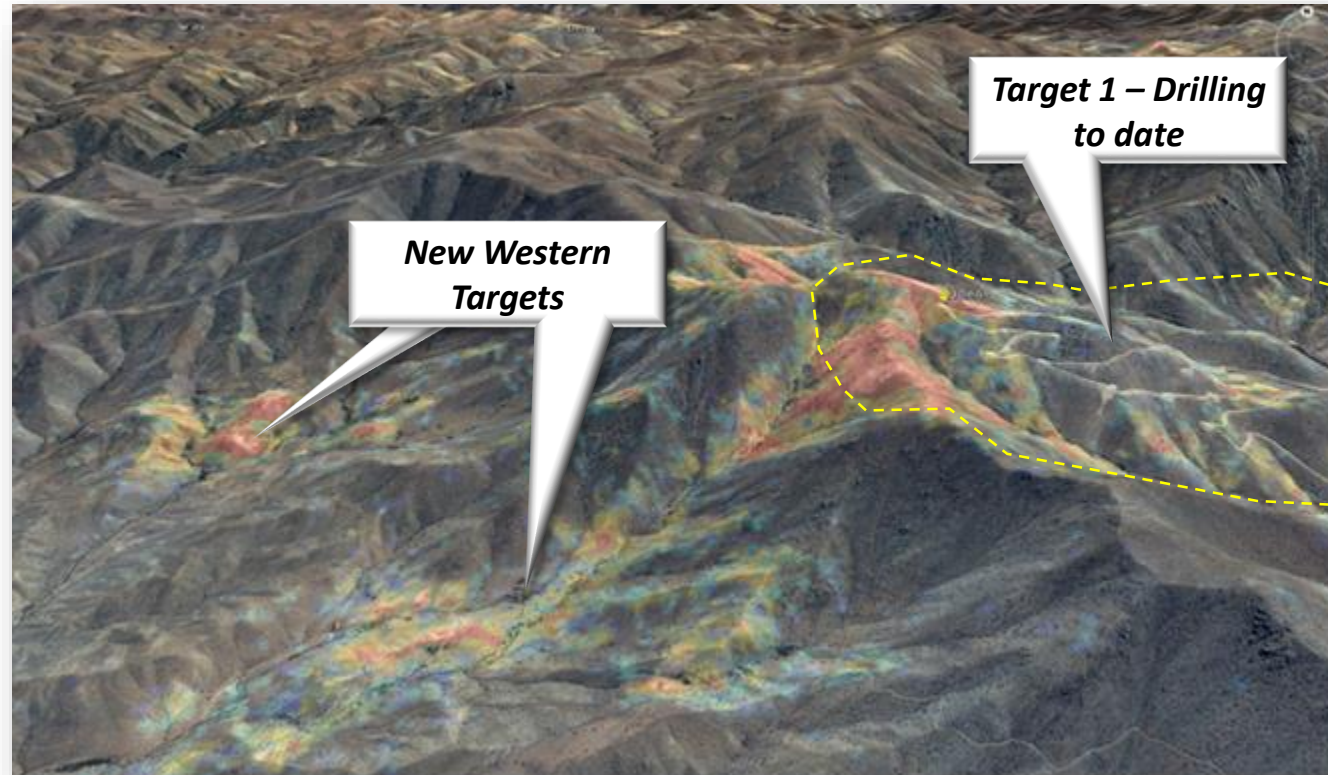
- 3000m DDH drilling by end 3Q19.



Large Scale Porphyry Copper Target

HELIX FREE-CARRIED TO
BFS WITH RETAINED
20% EQUITY

- Multiple Porphyry Phases Present – dynamic mineralising system
- Potentially economic grades intersected (>0.5% Cu for first time)
- Overall system significantly larger than zone previously drilled



Molybdenite-quartz veins in dacite porphyry



Late 'epithermal' base metal vein overprint



Copper bearing sulphides in dacite breccia matrix

Focused exploration - Quality Addresses – Value Drivers Emerging

GEOLOGICAL AND STRUCTURAL REVIEW DRIVING EXPLORATION STRATEGY

- Provenance and potential scale
- Advancing assests at Prospect and Project Scale, within funding capacity

COLLERINA COPPER PROJECT (100%)

- Flagship Helix discovery hosted within proven copper trend
- Improved drilling “hit rate” at depth in plunge corridor

REGIONAL COPPER PROSPECTS

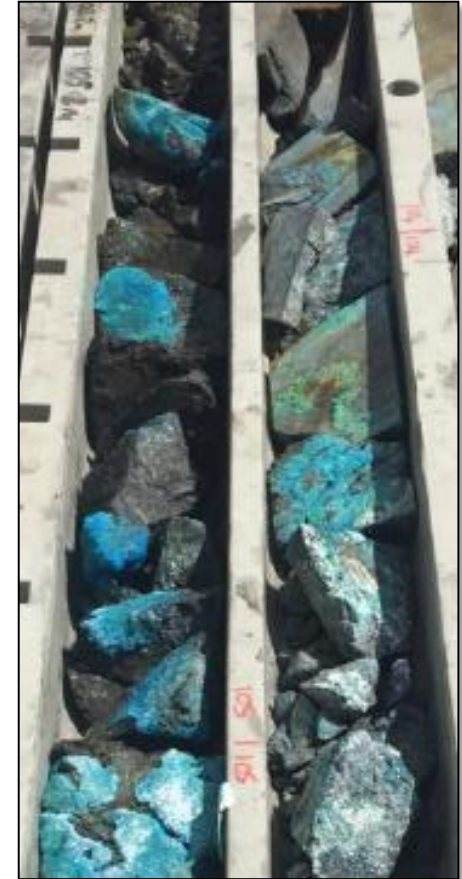
- Regional targets on Collerina Trend – Yathella, Tindalls, Widgelands
- Mundarlo Project (80%), new VMS province in south-east NSW

COBAR GOLD PROJECT (100%)

- Large system potential: depth continuation and more regional prospects identified

CHILE COPPER PROJECTS (100% - Fully Funded JV's)

- JV's partners fully funding exploration – Minimum \$2.7M by end 3Q19



Disclaimer and Competent Persons Statement

This presentation has been prepared by Helix Resources Limited (“Company”). The presentation does not contain all the information that a prospective investor may require about the companies, their business or the proposal. It is not a complete statement of material information. Except where stated, the information disclosed in this presentation (“Information”) relates to the proposed business of the Company at the date of this document. This presentation does not contain advice relating to legal, taxation or investment matters. The Company makes no representation or warranty (express or implied) as to the accuracy, reliability or completeness of the Information. The Company and its subsidiaries, directors, employees, agents and consultants shall have no liability (including liability to any person by reason of negligence or negligent misstatement) for any statements, opinions, information or matters (express or implied) arising out of, contained in or derived from, or for any omissions from this presentation, except liability under statute that cannot be excluded.

This presentation may contain reference to certain intentions, expectations and plans of a Company (“forward looking statements”). Those intentions, expectations and plans may or may not be achieved. Any forward looking statements are subject to inherent risks and uncertainties and are based on certain assumptions that may not be met or on which views may differ. The performance and operations of a Company may be influenced by a number of factors, many of which are outside the control of the Company. Actual future results may be materially different. No representation or warranty, express or implied, is made by either Company or any of its directors, officers, employees, advisers or agents that any intentions, expectations or plans will be achieved either totally or partially or that any particular rate of return will be achieved. You are cautioned against relying upon any forward looking statement in this document.

This presentation does not contain an offer of securities in a Company, nor an invitation to apply for such securities. Nothing in this document should be construed as investment advice or financial product advice, whether personal or general, for the purposes of Section 766B of the Corporations Act. The document does not involve or imply a recommendation or a statement of opinion in respect of whether to buy, sell or hold a financial product. You should obtain professional advice and carry out your own independent investigations and assessment of the Information before acting.

The Company has not verified the accuracy or completeness of the information, statements and opinions contained in this presentation. Accordingly, to the maximum extent permitted by law, the Company makes no representation and give no assurance, guarantee or warranty, express or implied, as to, and take no responsibility and assume no liability for, the authenticity, validity, accuracy, suitability or completeness of, or any errors in or omissions, from any information, statement or opinion contained in this presentation. The contents of this presentation are confidential. Information in this presentation which is attributed to a named third party source has not been checked or verified by the Company. This presentation remains the property of Helix Resources Limited and may not be reproduced, distributed, transmitted or published (in whole or in part) without the prior consent of the Company.

Competent Persons Statement

The information in this announcement that relates to Exploration Results, Mineral Resources or Ore Reserves is based on information compiled by Mr M Wilson who is a full time employee of Helix Resources Limited and a Member of The Australasian Institute of Mining and Metallurgy. Mr M Wilson has sufficient experience which is relevant to the style of mineralisation and type of deposit under consideration and to the activity which he is undertaking to qualify as a Competent Person as defined in the 2004 Edition of the ‘Australasian Code for Reporting of Exploration Results, Mineral Resources and Ore Reserves’. Mr M Wilson consents to the inclusion in the report of the matters based on his information in the form and context in which it appears.

Details of JORC 2012 compliant information and the assumptions underlying all Resource estimations are contained in previous ASX releases or at www.helix.net.au

For full details of exploration results relating to the Cobar Gold Project refer to ASX announcements dated 7 April 2011, 17 November 2016, 3 April 2017, 26 April 2017 and 11 May 2017. Helix Resources is not aware of any new information or data that materially effects the information in this announcement.

For full details of exploration results relating to the Collierina Copper Project refer to ASX announcements dated 15 December 2014, 4 February 2015, 10 November 2015, 18 February 2016, 2 November 2016, 4 May 2017 and 8 November 2017. 14 February 2018, 27 February 2018, 5 April 2018, 14 May 2018 and 13 June 2018 Helix Resources is not aware of any new information or data that materially effects the information in this announcement.



or further information:

Mick Wilson

Managing Director

mick.wilson@helix.net.au

+61 8 9321 2644

www.helixresources.com.au

RIU Conference: Booth 11

