

# Production | Development | Progress

121 Oil and Gas Investment  
16 - 17 May 2019, Hong Kong  
Rob Towner, Managing Director

# TRIANGLE ENERGY (GLOBAL) LTD (ASX:TEG)

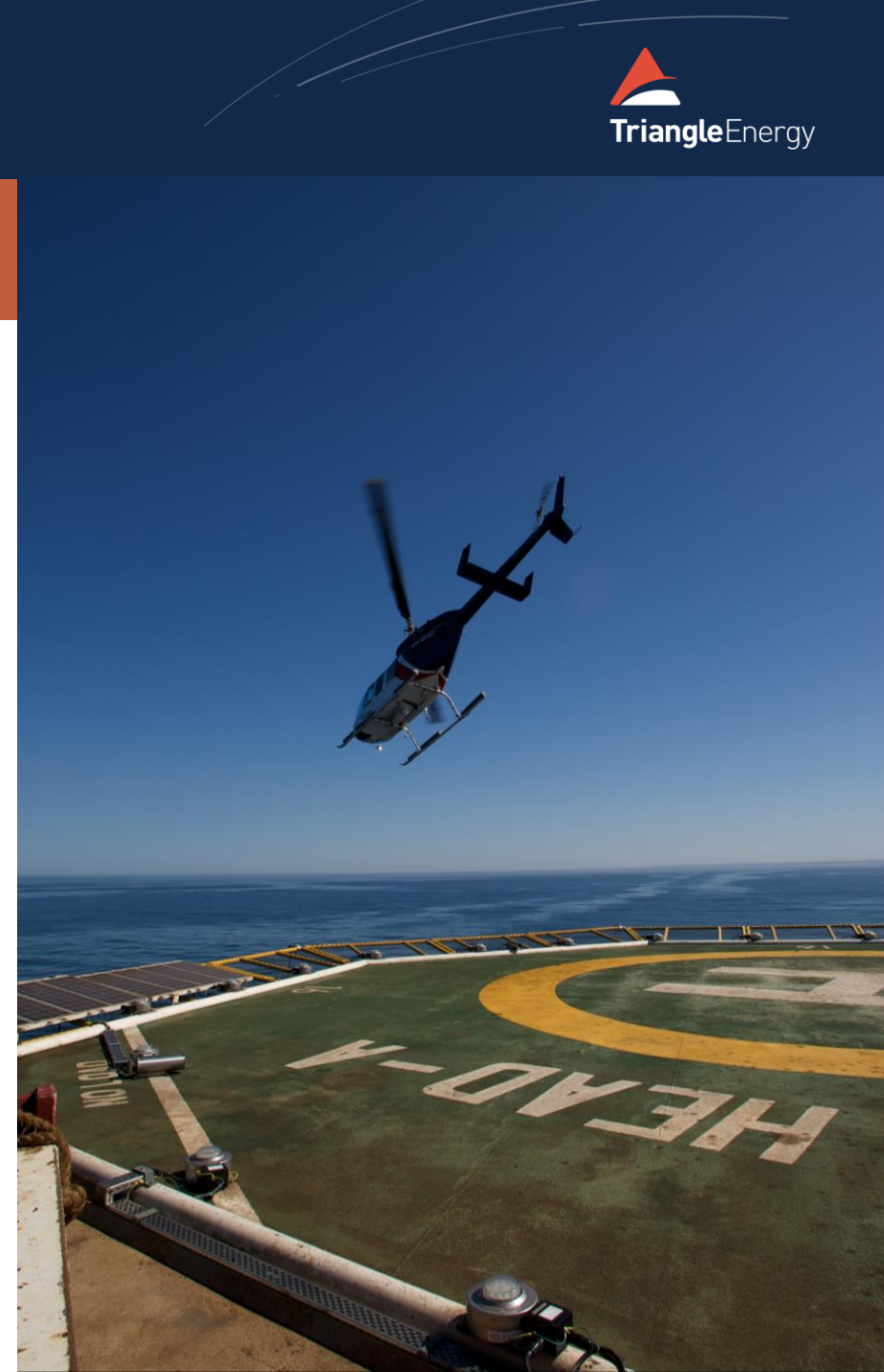


**Triangle is an oil producer with a growing exploration and development portfolio in the under explored Perth Basin**

- Australian focus in the oil and gas sector
- 78.75% interest and operator of the Cliff Head Oil Field with production (651 bbls net<sup>1</sup>) and predictable, positive cash flows
- Offshore and onshore infrastructure essential for any exploration success in the region
- Growth strategy to expand production in the Perth Basin
  - 50% interest in the Mt Horner L7 Production Licence<sup>2</sup>
  - 45% interest in TP/15 Xanadu-1 oil discovery
- 35% equity (47.8 million shares) in State Gas Ltd (ASX:GAS) valued at ~\$37 million *(at ~\$0.77 per share 10-05-19)*

1. CY19 Forecast average daily production

2. Subject to completion of the Farmout Agreement (see ASX announcement 31 October 2018).



# CORPORATE SNAPSHOT

## Capital Structure and Key Metrics

ASX Code	TEG
Shares on issue <sup>1</sup>	312.8 million
Unlisted options on issue	11.155M <i>exc @ \$0.15, exp 19 Jan 2020</i> 0.400M <i>performance shares</i>
Share price <sup>1</sup>	\$0.095
Market Capitalisation <sup>1</sup>	\$29.7 million
CY19 Attributable Gross Cashflow (78.75% Cliff Head) <sup>2</sup>	\$23.1 million (651 bbl/day, USD 69/bbl, USD/AUD 0.71)
Cash	\$4.14 million (at 31 March 2019);
Debt <sup>3</sup>	USD 1.259 million (Tamarind) AUD 0.37 million (TEO Related Party Loan)

## Operating Metrics

	Mar Qtr.	Dec Qtr.	Sept Qtr.
Cliff Head Daily Production (100%)	802 bopd	766 bopd	397 bopd
Net Reserves <sup>4</sup>	2P Reserves – 1.73 mmstb		

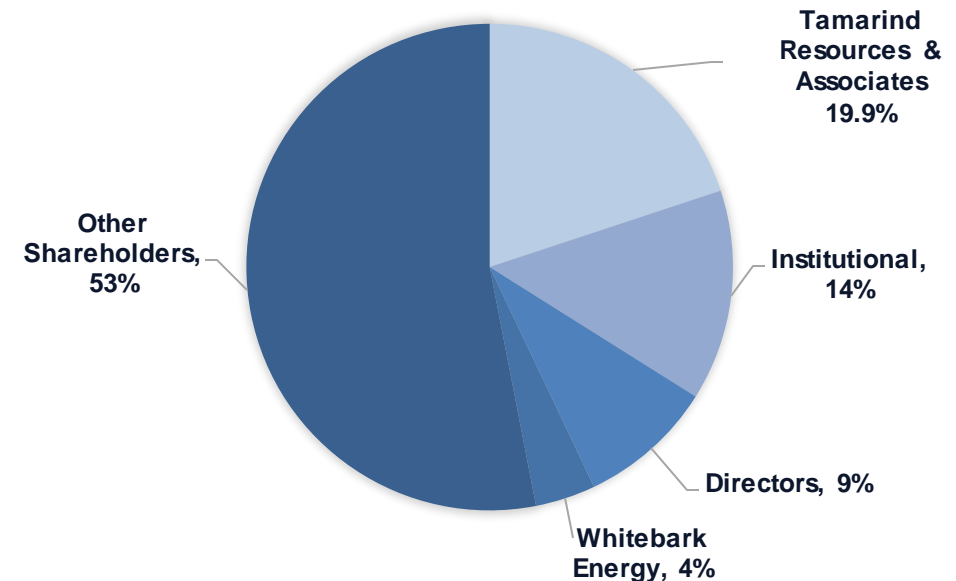
### Notes:

1. At 13 May 2019. Undiluted market capitalisation.
2. Based on CY19 forecast av 651 bbl/day (78.75% JV),
3. Debt position at 31 March 2019, Tamarind Loan repayable in full on or before 30 June 2019. Triangle Energy (Operations) Pty Ltd Shareholder Loan (excess cash flow from operations of 50/50% jointly controlled entity)
4. Reserves as at 1 January 2019 based on Roc Oil October 2016 reserves assessment

## Board

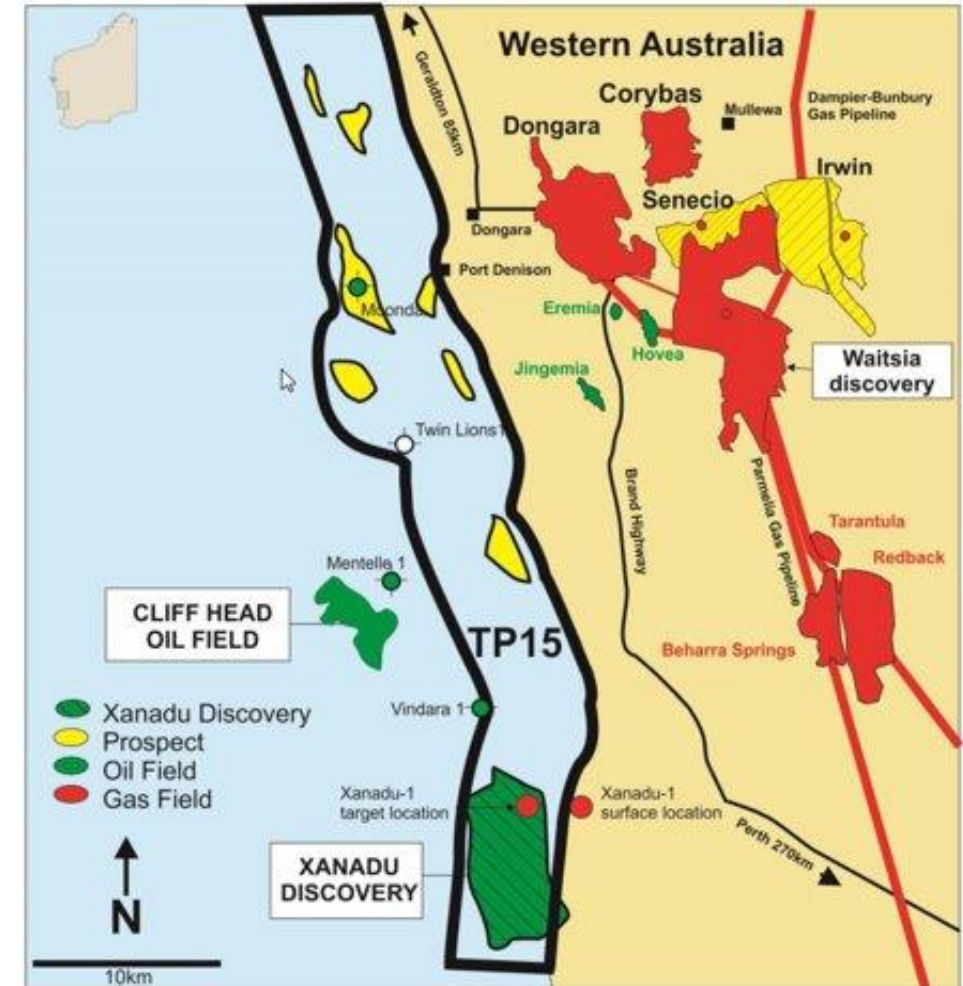
Timothy Monckton	Non-Executive Chairman
Robert Towner	Managing Director
Darren Bromley	Executive Director – CFO / COO
Wai-Lid Wong	Non-Executive Director
Jason Peacock	Non-Executive Director
Edward Farrell	Non-Executive Director

## Shareholder Composition





# CLIFF HEAD OIL FIELD

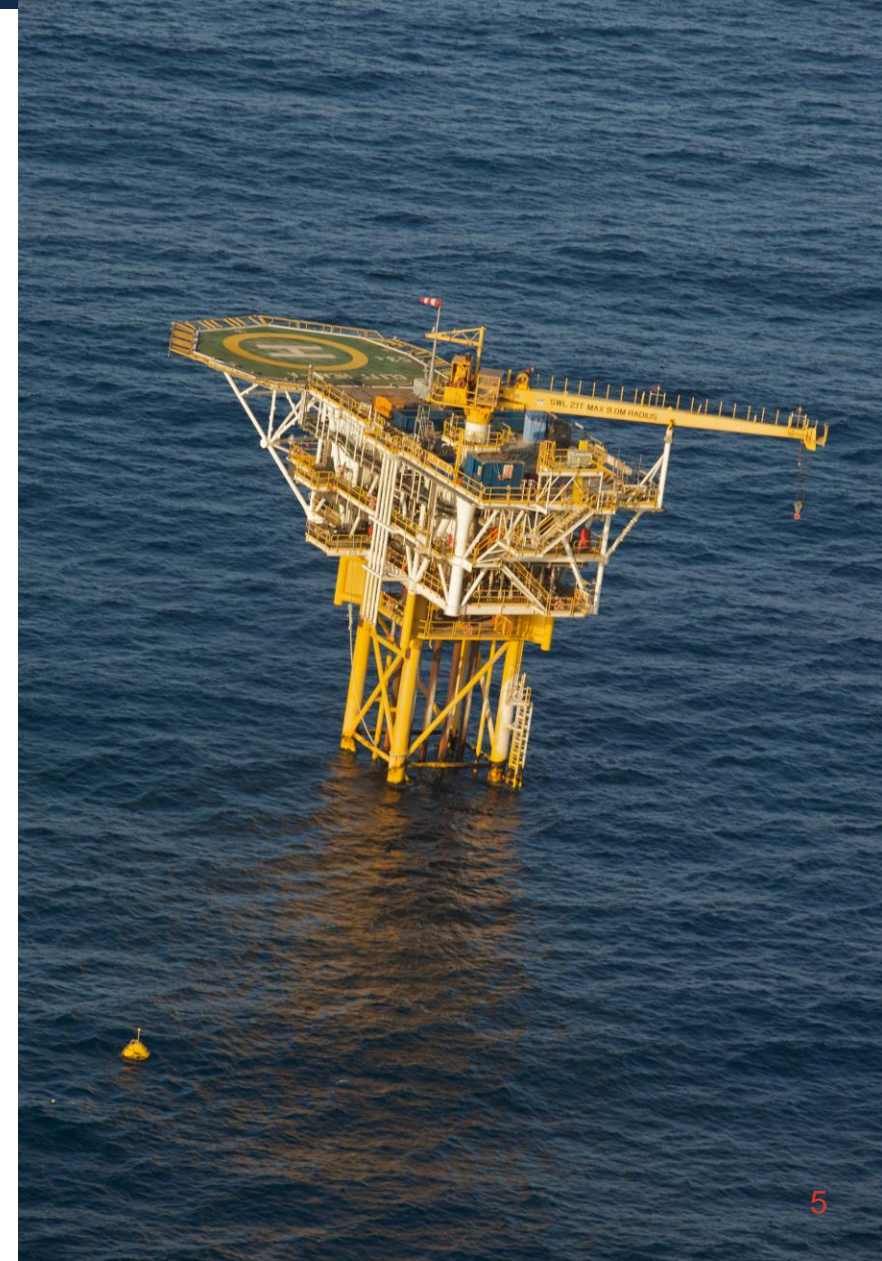




## Cliff Head Oil Field Production Profile

- CHJV (100%) production March quarter 2019: **72,193 bbls (802 bopd)**
- CHJV (100%) oil sales revenue March 2019 quarter: **AU\$6.13 million**
- CHJV lifting costs: **US\$27.69/bbl**
- CHJV operating margin: **US\$32.81/bbl<sup>1</sup>**

<sup>1</sup>. Operating margin excludes Non-Routine, Transportation and any Capital Expenditure for the period.





- Cliff Head Production Enhancement Programme
- 50%<sup>1</sup> participating interest in Production Licence L7 Mt Horner
- 45% equity interest in TP/15 JV (Xanadu oil discovery)
- Continue to assess opportunities in the Perth Basin
- Capacity to process additional crude within the Perth Basin

1. Subject to completion of the Farmout Agreement (see ASX announcement 31 October 2018).

## Cliff Head Production Enhancement Programme

### **Reservoir Management**

Reservoir dynamic modelling

### **Waterflood Management**

Redefine waterflood strategy to balance the sweep and improve recovery, through zonal isolation in existing water injector(s) or conversion of producer into injector

### **Production Enhancement**

Maturing several workovers/well intervention, scope includes evaluation of workover to access unproduced zone and add-perf/re-completion to support waterflood strategy

### **Infill Development Drilling**

Develop unproduced and by-passed oil through infill drilling and evaluate the feasibility of workover/recompletions

### **Near Field Exploration**

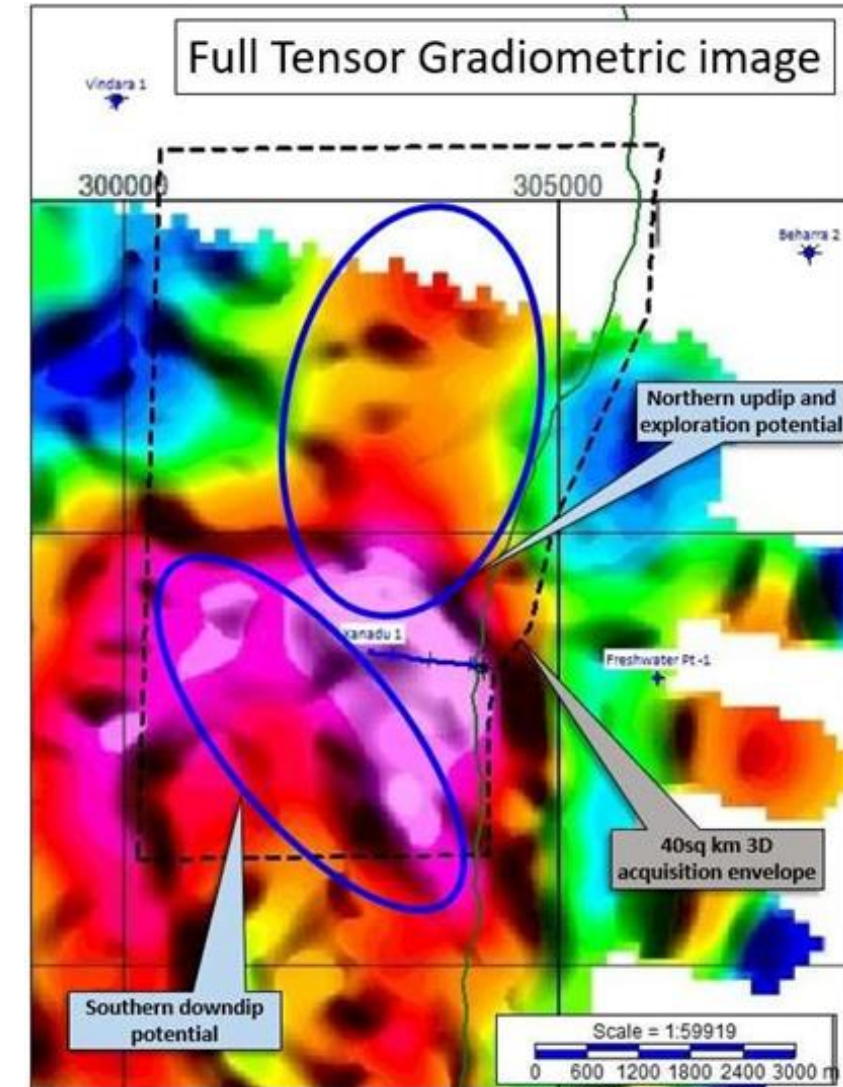
Identified exploration prospects within the block, namely NFE West, South, SE and CH5 area.



## TP/15 XANADU DISCOVERY

### The story so far.....a strong upside position

- Confirmed oil discovery
- Triangle has a 45% interest in the TP/15 Joint Venture
- Xanadu-1 was drilled as a deviated well, from an onshore surface location to an offshore target, TD at 2035m.
- Xanadu is structurally and geochemically similar to Cliff Head and production from TP/15 will fit seamlessly into the Arrowsmith processing plant 12 kms to the north
- The forward plan:
  - Approval granted of the Environmental Plan for the 42km<sup>2</sup> 3D seismic<sup>1</sup>
  - Drilling under review that could include extending / side-tracking the Xanadu-1 well
  - Objective is to progress a low cost, high impact follow-up programme to fast-track future drilling and development planning



<sup>1</sup> Oil Spill Contingency Plan to be finalised.



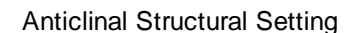


## PRODUCTION LICENCE L7: MOUNT HORNER 50% Farmout Agreement Executed<sup>1</sup>

- The Joint Venture will develop a work programme which will include a 3D seismic survey of at least 50 km<sup>2</sup> and a drilling programme of at least two new wells
- The Joint Venture will evaluate workover opportunities of the existing two wells

<sup>1</sup> Subject to completion of the Farmout Agreement. See ASX Announcement dated 31 October 2018

- GAS holds an 80% interest and is the Operator of the Reid's Dome Gas Project (PL231) in the Bowen Basin QLD
- Successfully drilled two wells during Q4 2018, Primero West-1 and Nyanda-4
- Nyanda-4 drilled to 1200m encountering 40.4m of net coal seams and an additional 25m of carbonaceous shales and thinner coal seams
- Average gas content 11.6m<sup>3</sup>/t





# INVESTMENT PROPOSITION

- ✓ Developing projects and creating value in the Perth Basin
- ✓ 78.75% interest and Operator of Cliff Head Oil Field
- ✓ Oil production providing predictable, positive cash flow
- ✓ Valuable infrastructure with capacity to process additional crude within the Perth Basin
- ✓ 45% interest in TP/15 (Xanadu-1 oil discovery) with near term 3D seismic and drilling
- ✓ Potential to increase reserves through TEG 50%<sup>1</sup> interest in PL L7: Mt Horner
- ✓ 35% equity (47.8 million shares) in State Gas Ltd (ASX:GAS) valued at \$37 million *(at ~\$0.77/share 10/05/19)*

**The only offshore and onshore infrastructure operating in the Perth Basin**



Arrowsmith Stabilisation Plant (ASP)



Cliff Head Alpha Platform

1. Subject to completion of the Farmout Agreement (see ASX announcement 31 October 2018).



**Triangle Energy (Global) Limited  
(ASX:TEG)**

**Mr Rob Towner – Managing Director**

**Ground Floor, 100 Havelock St  
West Perth Western Australia 6005**

**E: [info@triangleenergy.com.au](mailto:info@triangleenergy.com.au)**

**T: +61 8 9219 7111**

**W: [www.triangleenergy.com.au](http://www.triangleenergy.com.au)**





# DISCLAIMER AND FORWARD LOOKING STATEMENTS

- This Presentation is provided on the basis that Triangle Energy (Global) Limited (“Triangle” or the “Company”) nor its respective officers, shareholders, related bodies corporate, partners, affiliates, employees, representatives and advisers make any representation or warranty (express or implied) as to the accuracy, reliability, relevance or completeness of the material contained in the Presentation and nothing contained in the Presentation is, or may be relied upon as, a promise, representation or warranty, whether as to the past or the future. The Company hereby excludes all warranties that can be excluded by law.
- All persons should consider seeking appropriate professional advice in reviewing the Presentation and all other information with respect to the Company and evaluating the business, financial performance and operations of the Company. Neither the provision of the Presentation nor any information contained in the Presentation or subsequently communicated to any person in connection with the Presentation is, or should be taken as, constituting the giving of investment advice to any person.
- Certain statements in this presentation contain ‘forward-looking statements’ including, without limitation to: expectations, beliefs, plans and objectives regarding production and exploration activities. Any matters that are not historical facts are forward-looking and accordingly, involve estimates, assumptions, risks and uncertainties and other factors discussed in our most recently lodged Annual Report, our website, <http://www.triangleenergy.com.au/>, and in our other public documents and press releases. These forward-looking statements are based on Triangle’s current expectations, estimates and projections about the company, its industry, its management’s beliefs and certain assumptions made by management. No assurance can be given that such expectations, estimates or projections will prove to have been correct. A number of factors could cause actual results to differ materially from the projections, anticipated results or other expectations expressed in this presentation, including, Triangle’s ability to meet its production targets, successfully manage its capital expenditures and to complete, test and produce the wells and prospects identified in this presentation; to successfully plan, secure necessary government approvals, finance and to achieve its production and budget expectations on its projects.
- Whenever possible, these ‘forward-looking statements’ are identified by words such as “expects,” “believes,” “anticipates,” “projects,” and similar phrases. Because such statements involve risks and uncertainties, Triangle’s actual results and performance may differ materially from the results expressed or implied by such forward-looking statements. Given these risks and uncertainties, you are cautioned not to place undue reliance on such forward-looking statements, which speak only as of the date hereof. Unless legally required, we assume no duty to update these statements as of any future date. However, you should review carefully reports and documents that Triangle lodges periodically with the Australian Securities Exchange.
- In accordance with ASX Listing Rules, information in this report that relates to prospective resources has been reviewed and signed off by Mr Matt Fittall, the Company's Subsurface Manager, Information that relates to the prospective resources is based on and fairly represents, information and supporting documentation prepared by or under the supervision of Mr Fittall. He has provided his written consent to the form and context in which the information that relates to the reserves presented. Matt Fittall is a geologist and senior industry executive of over 30 years standing. He has a foundation of 25 years experience in a range of technical, operational and management roles with major Operators, primarily BHP Billiton, and also Delhi Petroleum (now a subsidiary of Beach Energy).