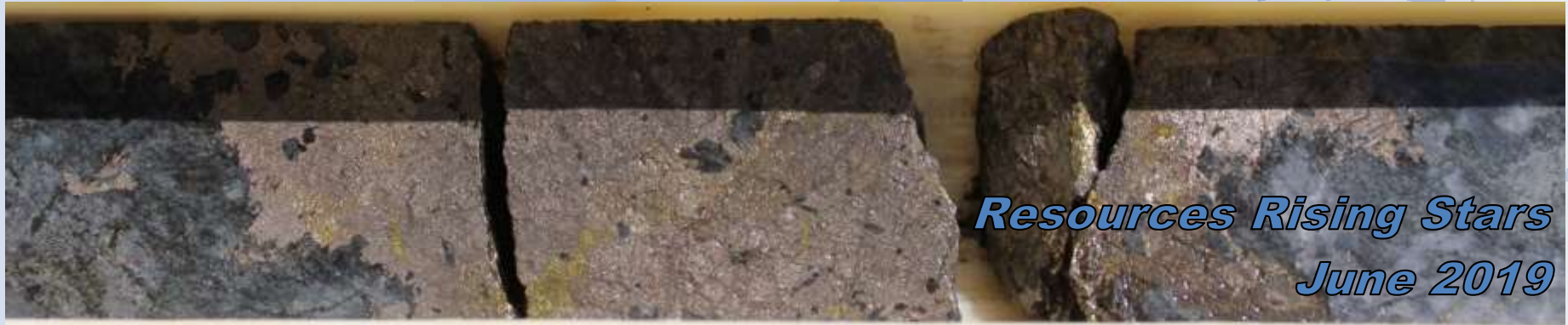




Sipa Resources Limited

# ***Greenfield Mineral Discovery in Australia and Uganda***



***Resources Rising Stars  
June 2019***

# DISCLAIMER

This presentation has been prepared by Sipa Resources Limited (**Sipa**).

**Summary of information:** This presentation contains general and background information about Sipa's activities current as at the date of the presentation and should not be considered to be comprehensive or to comprise all the information that an investor should consider when making an investment decision. The information is provided in summary form, has not been independently verified, and should not be considered to be comprehensive or complete. It should be read solely in conjunction with the oral briefing provided by Sipa and all other documents provided to you by Sipa. Sipa is not responsible for providing updated information and assumes no responsibility to do so.

**Not financial product advice:** This presentation is not financial product, investment advice or a recommendation to acquire Sipa securities and has been prepared without taking into account the objectives, financial situation or needs of individuals. Before making an investment decision prospective investors should consider the appropriateness of the information having regard to their own objectives, financial situation and needs, and seek legal, taxation and financial advice appropriate to their jurisdiction and circumstances. Sipa is not licensed to provide financial product advice in respect of its securities or any other financial products. Cooling off rights do not apply to the acquisition of Sipa securities. Sipa assumes that the recipient is capable of making its own independent assessment, without reliance on this document, of the information and any potential investment and will conduct its own investigation.

**Disclaimer:** Sipa and its related bodies corporate and each of their respective directors, agents, officers, employees and advisers expressly disclaim, to the maximum extent permitted by law, all liabilities (however caused, including negligence) in respect of, make no representations regarding, and take no responsibility for, any part of this presentation and make no representation or warranty as to the currency, accuracy, reliability or completeness of any information, statements, opinions, conclusions or representations contained in this presentation. In particular, this presentation does not constitute, and shall not be relied upon as, a promise, representation, warranty or guarantee as to the past, present or the future performance of Sipa.

**Future performance:** This presentation contains certain forward-looking statements and opinion. The forward-looking statements, opinion and estimates provided in this presentation are based on assumptions and contingencies which are subject to change without notice, as are statements about market and industry trends, which are based on interpretations of current market conditions. Forward-looking statements, including projections, forecasts and estimates, are provided as a general guide only and should not be relied on as an indication or guarantee of future performance and involve known and unknown risks, uncertainties and other factors, many of which are outside the control of Sipa. Past performance is not necessarily a guide to future performance and no representation or warranty is made as to the likelihood of achievement or reasonableness of any forward looking statements or other forecast.

**Risks:** An investment in Sipa shares is subject to investment and other known and unknown risks, some of which are beyond the control of Sipa. You should have regard to the 'Key Risks' section of this presentation which outlines some of these risks.

**Not an offer:** This presentation is not, and should not be considered as, an offer or an invitation to acquire securities in Sipa or any other financial products and neither this document nor any of its contents will form the basis of any contract or commitment. This presentation is not a prospectus. Offers of securities in Sipa will only be made in places in which, or to persons to whom it would be lawful to make such offers. This presentation must not be disclosed to any other party and does not carry any right of publication. Neither this presentation nor any of its contents may be reproduced or used for any other purpose without the prior written consent of Sipa.

**No Distribution in the US:** This presentation is not an offer of securities for sale in the United States. Any securities to be issued by Sipa have not been and will not be registered under the US Securities Act of 1933, as amended (the "**US Securities Act**") and may not be offered or sold in the United States absent registration or an exemption from registration under the US Securities Act. No public offer of the securities is being made in the United States and the information contained herein does not constitute an offer of securities for sale in the United States. This presentation is not for distribution directly or indirectly in or into the United States or to US persons.

**Monetary values:** Unless otherwise stated, all dollar values are in Australian dollars (A\$). The information in this presentation remains subject to change without notice.

**No distribution:** Distribution of this presentation may be restricted by law. Persons who come into possession of this presentation should seek advice on and observe any such restrictions. Any failure to comply with such restrictions may constitute a violation of applicable securities laws.

**JORC:** The information in this report that relates to the exploration results previously reported in the ASX Announcements dated 22 April 2015, 17 November 2016, 1 December 2016, 22 February 2017, 24 May 2017, 19 June 2017, 18 September 2017, 22 September 2017, 12 October 2017, 20 October 2017, 5 December 2018, 24 April 2019 and 1 May 2019. The Company is not aware of any new information or data that materially affects the information included in those relevant market announcements.

# STRATEGY

- Sipa's strength and track record is in quality greenfields project generation and discovery
- Sipa's aim is to identify and secure first mover positions in under-explored mineral provinces with high potential for significant discoveries
- Funding via JV's, alliances, strategic investments



# CORPORATE

## Capital Structure

<b>ASX Code</b>	<b>SRI</b>
<b>Shares (Ord.) (27/05/19)</b>	<b>1707m</b>
<b>Share Price (27/05/19)</b>	<b>0.9c</b>
<b>Market Cap (27/05/19)</b>	<b>\$15.4m</b>
<b>Cash (at 31/03/19)</b>	<b>\$3.1m</b>
<b>(+Post 31/03/19 Placement to Rodiv for 0.82M)</b>	

## Shareholders

<b>Rodiv NSW P/L Pension Fund</b>	<b>17.7%</b>
<b>JM Financial</b>	<b>5.2%</b>
<b>Directors &amp; Management</b>	<b>1.4%</b>
<b>Total in top 20</b>	<b>37.0%</b>

## Board

<b>Tim Kennedy</b>	<b>Chairman</b>
<b>Lynda Burnett</b>	<b>Managing Director</b>
<b>Karen Field</b>	<b>Non Executive Director</b>
<b>Craig McGown</b>	<b>Non Executive Director</b>

# OVERVIEW – 2 active discoveries

- Greenfields explorer and discoverer in frontier mineral provinces in Uganda and Australia





# OVERVIEW – 5 new projects

- Consistent with our strategy of greenfields discovery in new highly prospective areas
- Actively looking for partners



# PATERSON NORTH - WA

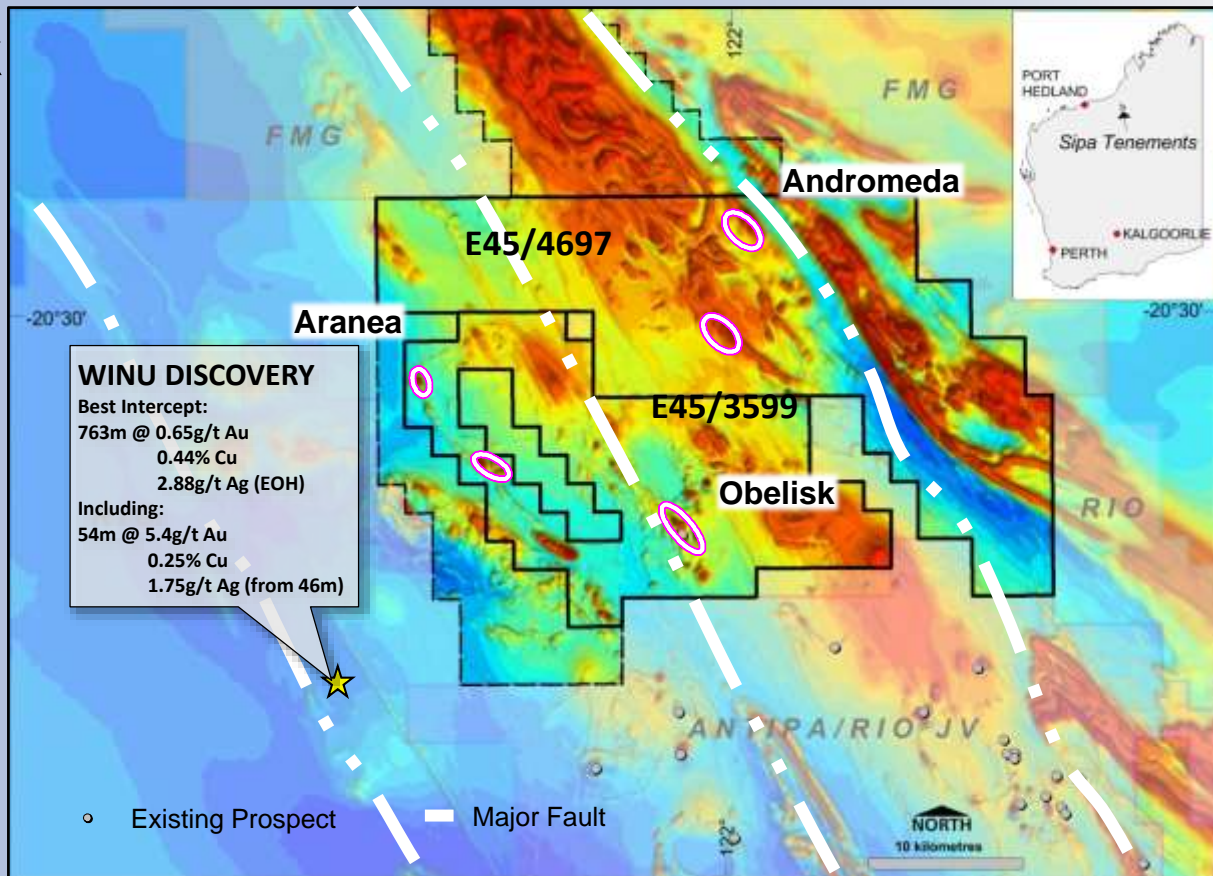
*Sipa was first mover when in 2016 it secured large strategic holding in one of highest potential discovery destinations globally*



*Located 10km from Winu, Sipa has discovered new Copper Gold prospects at Obelisk and Aranea*

# PATERSON NORTH – Winu and Obelisk

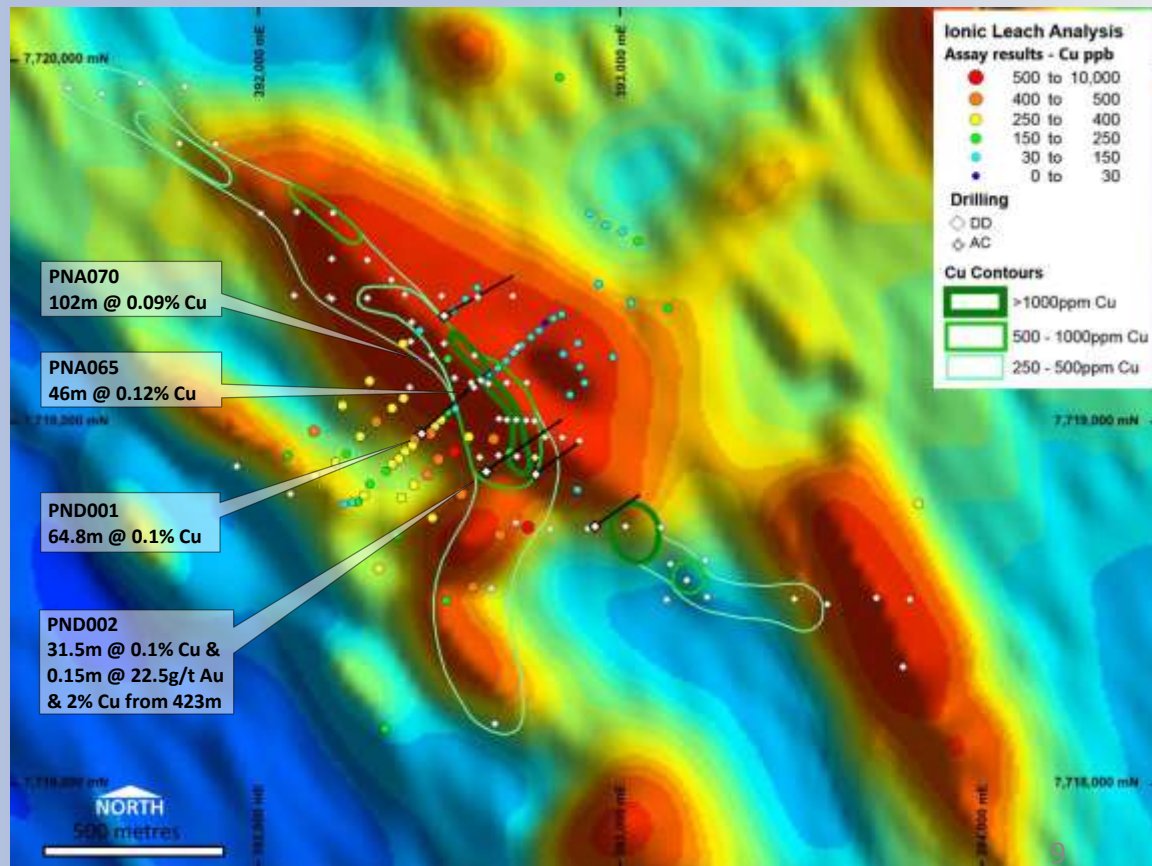
- Winu and Obelisk are similar systems
- Cu Au + (Ag,Mo,Bi,W) association
- High grade multiple vein hosted Pyrite  
Chalcopyrite  
Pyrrhotite





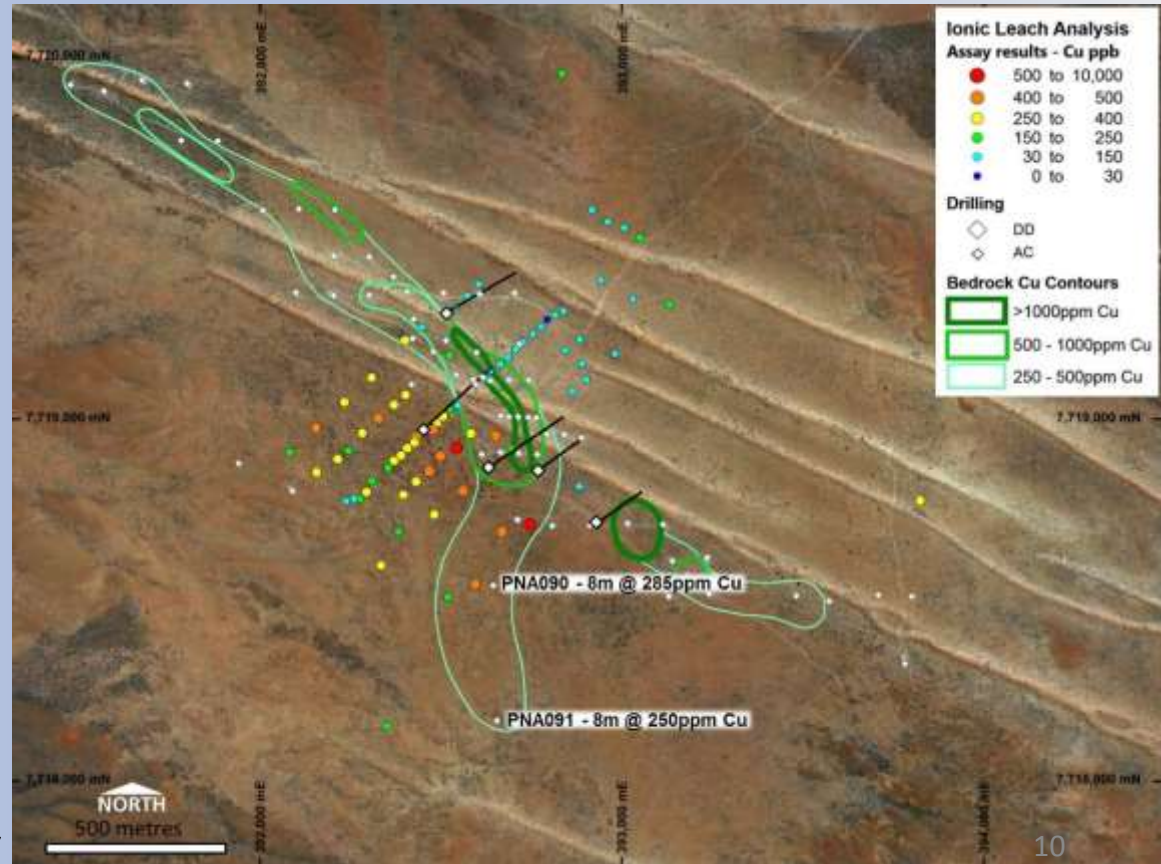
# PATERSON NORTH – Obelisk

- Drilled a Large copper (+Au Ag Bi Mo W) system associated with complex gravity and magnetic anomalies
- Under 70-100m sand cover



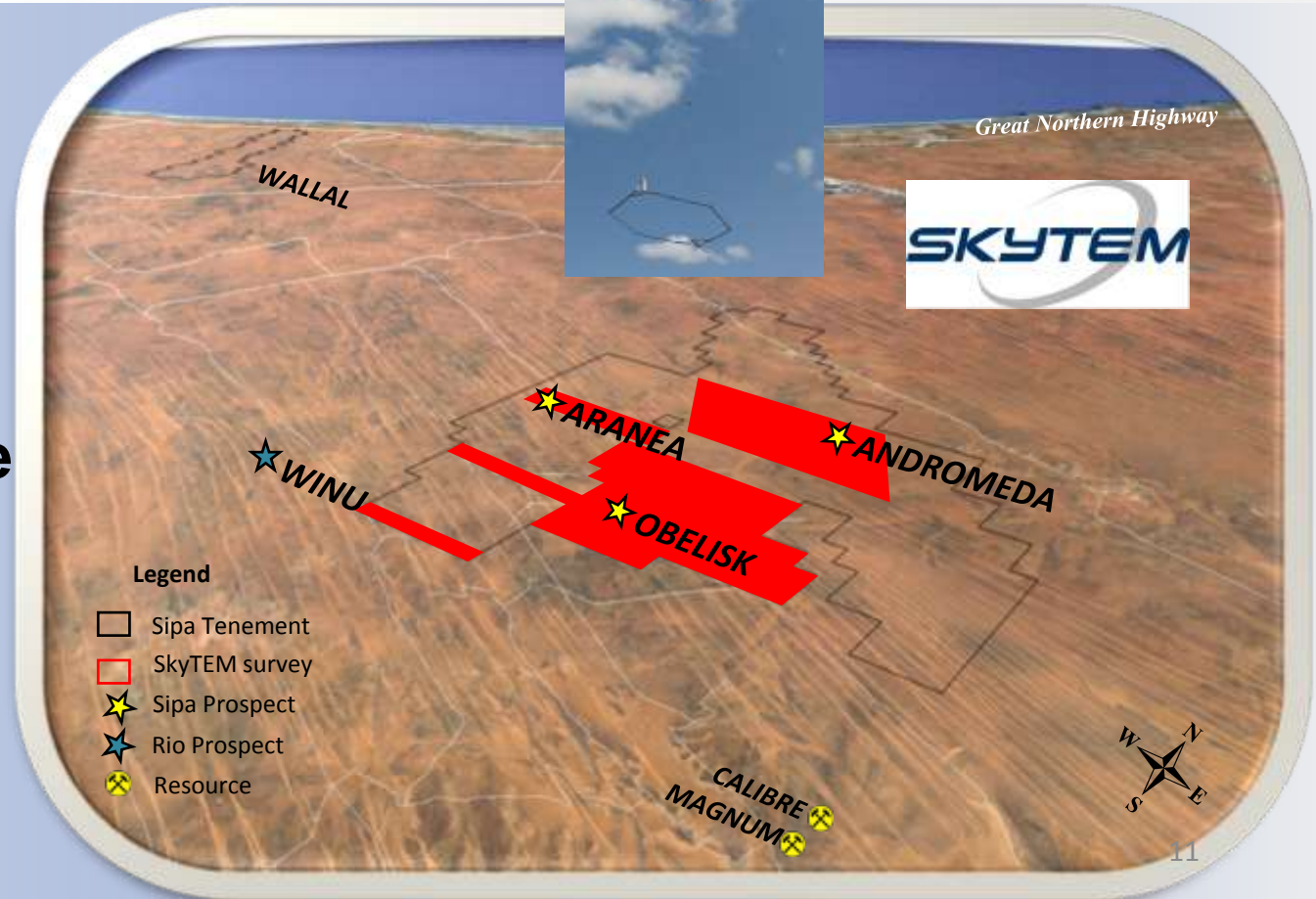
# PATERSON NORTH – Obelisk

- “Seeing” through sand is the key to future discoveries
- Preliminary work indicates that surface geochemistry may be an important discovery tool
- Further soil geochem underway



# PATERSON NORTH - EM

- In addition SkyTEM EM geophysics is imminent. The survey will determine depth to bedrock and directly detect sulphides



# PATERSON NORTH - PROGRAM

Program	June	July	August	September	October
SKYTEM					
Soil Study					
Heritage Survey					
RC/Aircore					
Follow up					

- **WA Govt EIS co-funded drilling grant to support RC/Aircore program up to \$150,000**





# KITGUM PADER

*100km long Belt scale land holding. Sipa was first mover in 2012 and discovered nickel copper sulphides in 2014. JV with Rio Tinto 2018*



*14+ nickel prospective intrusions*

*Drilled and extended Akelikongo nickel copper sulphide discovery*

# HIGHLIGHTS 2018-9 - Uganda

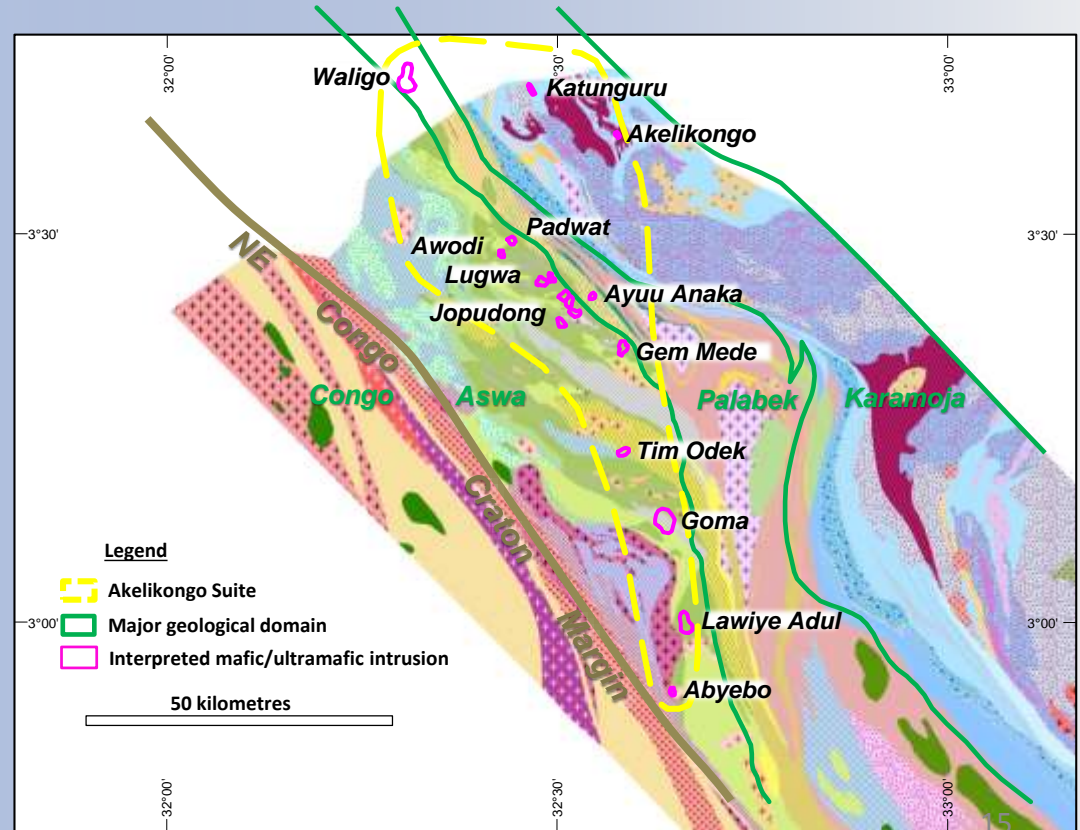
*Rio Tinto farm-in (up to 59M) , Sipa manager, Rio funding. Work commenced August 2018*

- 1<sup>st</sup> phase Gravity surveying, mapping and rock chip sampling of ultramafic intrusive complexes
- 10 diamond holes for 4083 metres
- 5 holes at Akelikongo, 4/5 holes have extended mineralisation



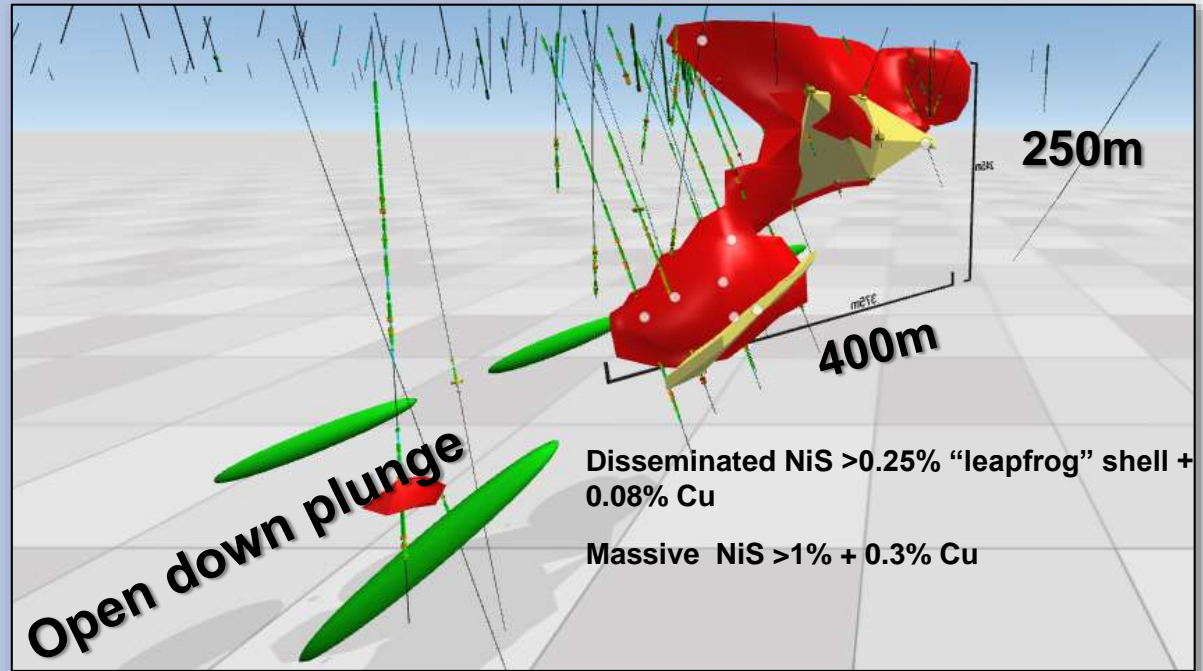
# KITGUM PADER JV – Work Program

- Analysis of new mapping, rock geochemistry drilling and ground geophysics to determine belt scale prospectivity
- DHEM
- Diamond Core Drilling



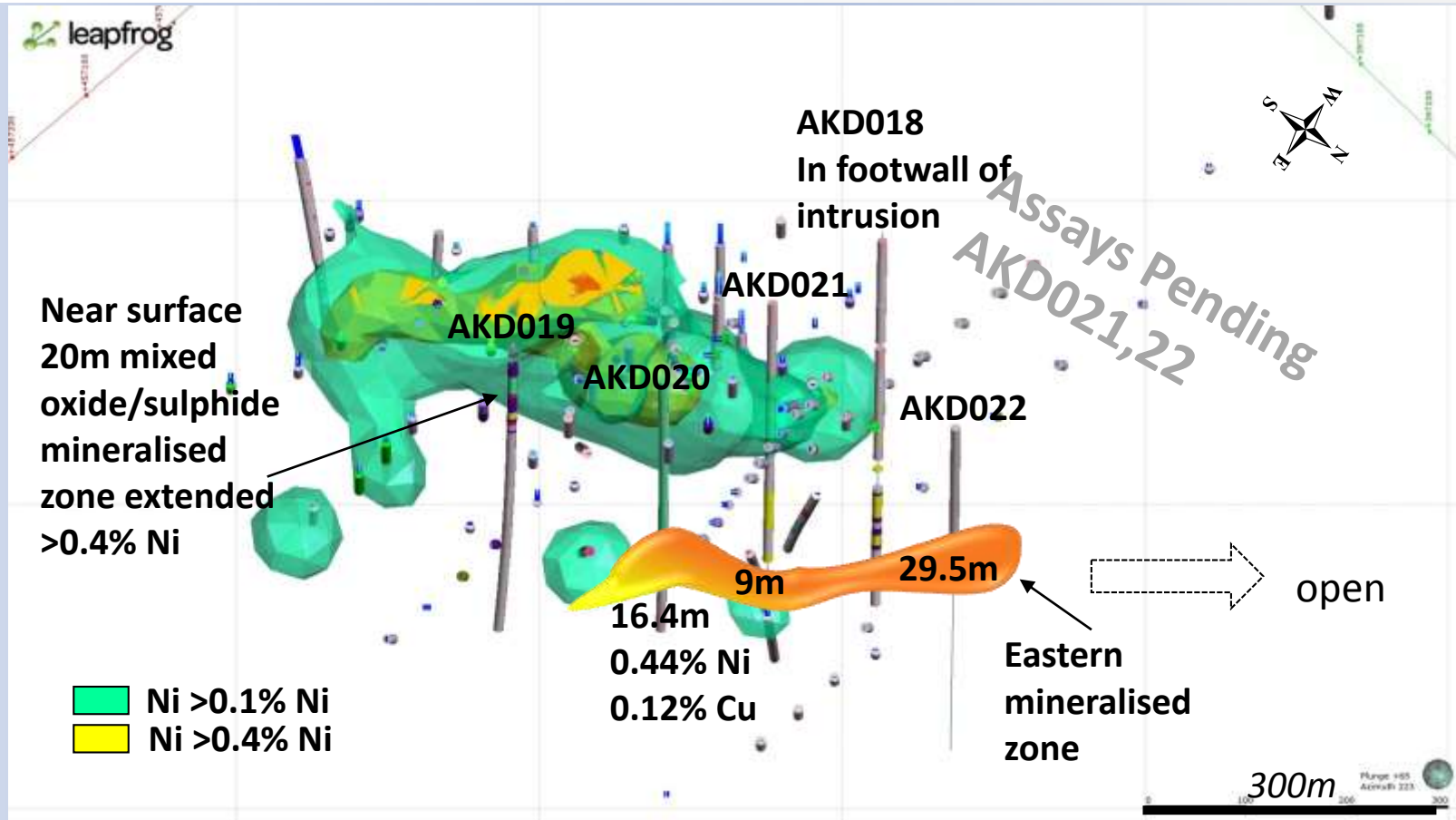
# KITGUM PADER JV - Akelikongo

- Thick (>100m) continuous widths of disseminated and massive nickel and copper sulphides
- Intrusion now drilled over 700m extending from surface

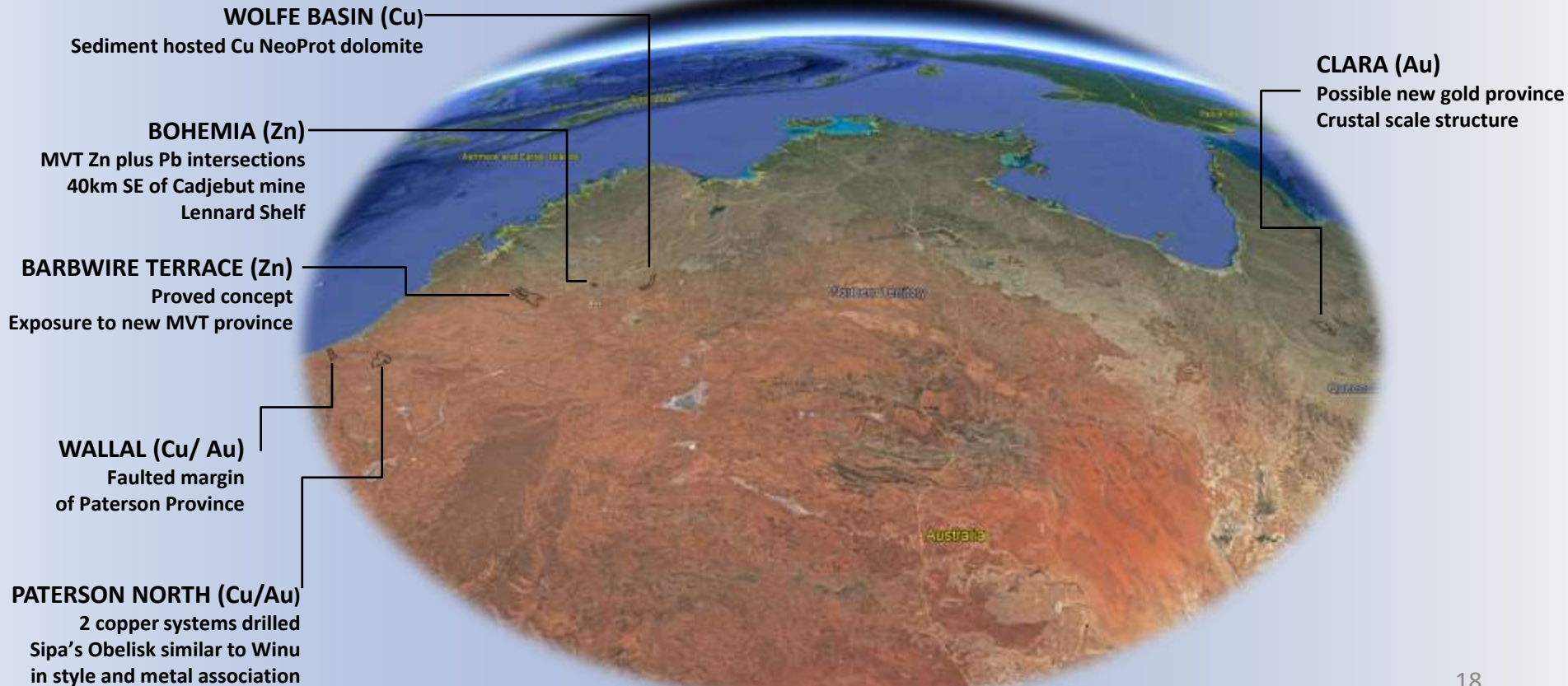




# Akelikongo 5 new drill holes

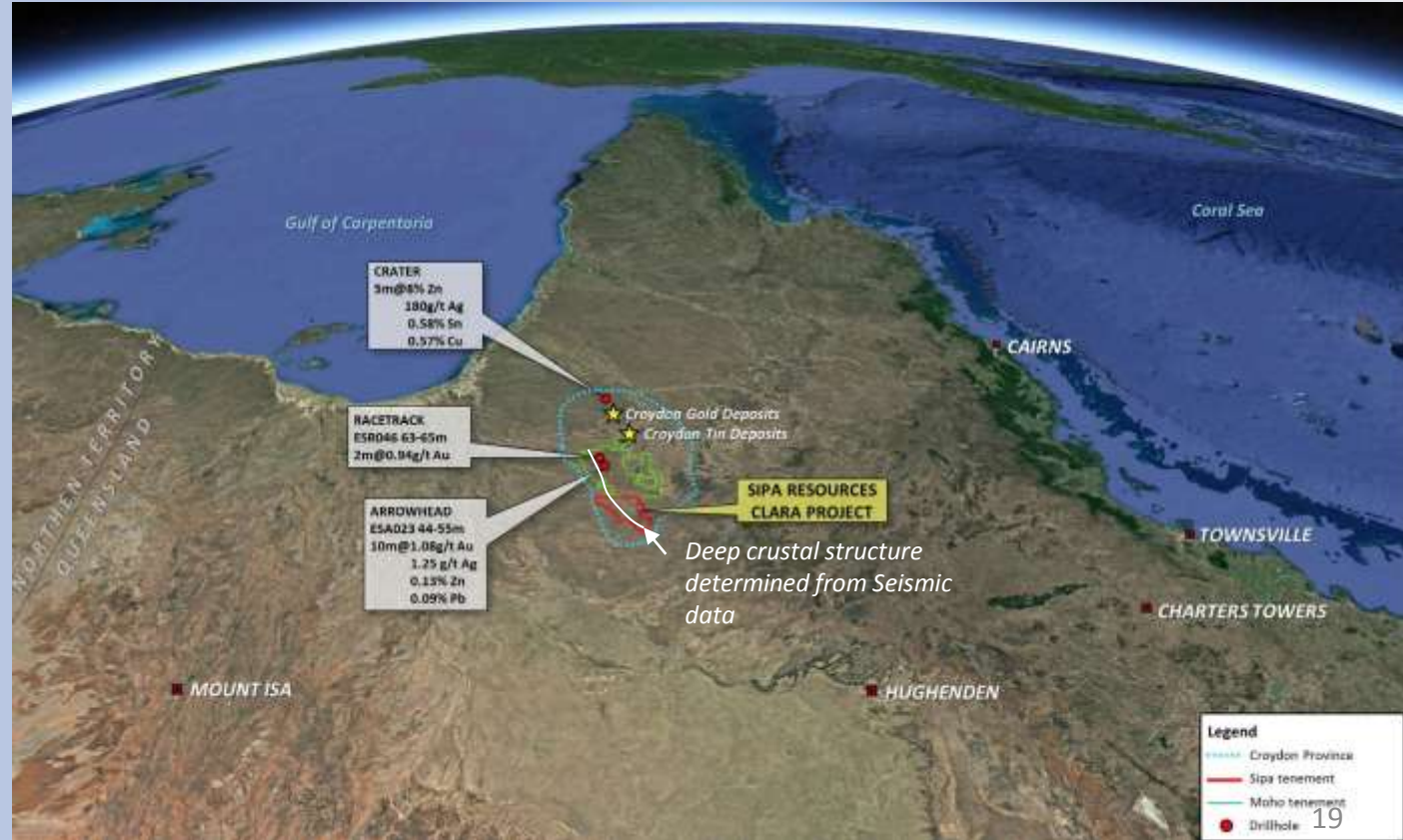


# AUSTRALIAN PROJECTS - Overview



# Clara Gold – NW Queensland

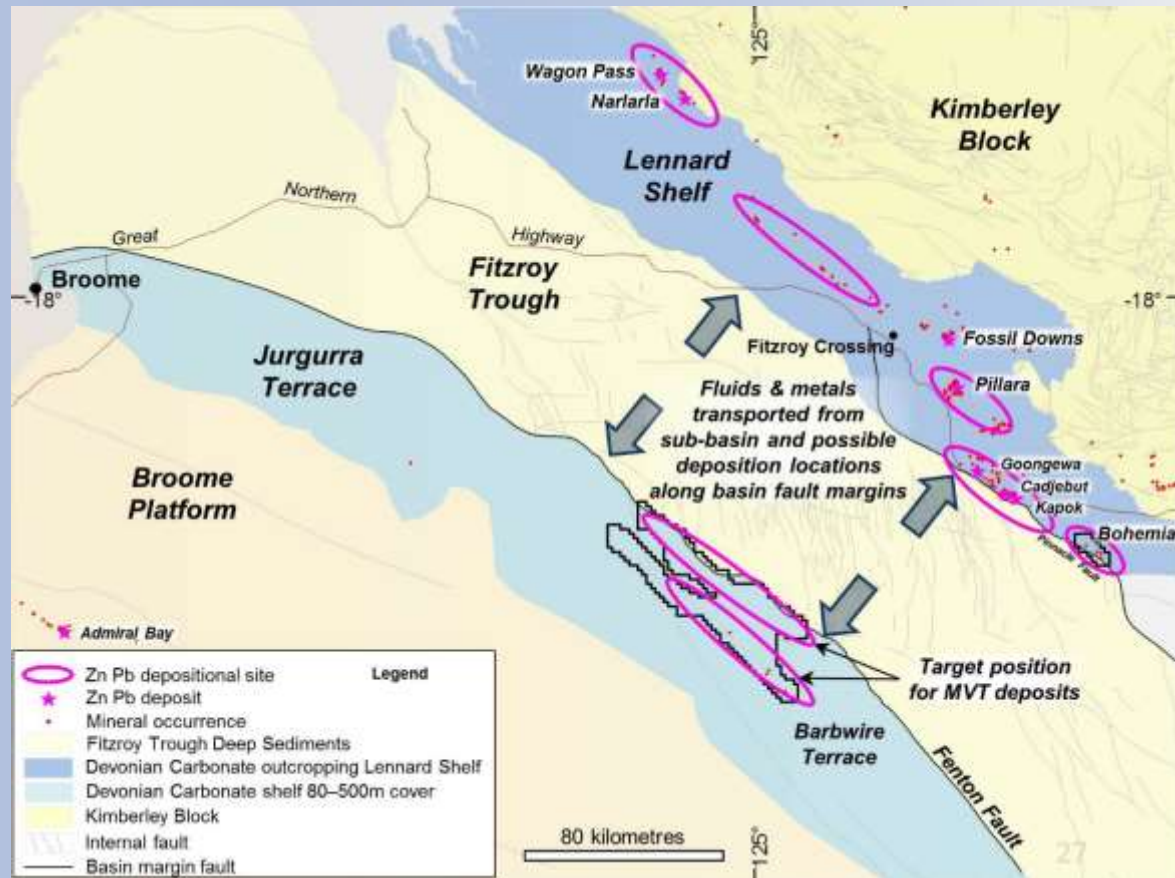
- Emerging intrusion related gold province
- Shallow cover
- Deep crustal structure





# Barbwire Terrace, Bohemia –MVT Zinc

- Concept proven but little to no work ever done
- Zinc mineralising fluids moved both ways out of the Fitzroy Trough and into Lennard Shelf in North and Barbwire in South





# Barbwire Terrace – is zinc mineralised

- GSWA Core Library Hole WRD1 shows visible sulphide (marcasite) mineralisation in dolomitised upper Devonian Carbonate rocks with Zinc up to 2% detected on portable XRF



2% Zinc on  
PXRF Spot

# News flow and Plan forward

- Paterson - Skytem EM geophysical survey underway
- Paterson - surface soil geochemical study underway
- Paterson - EIS co-funded drilling – July
- Uganda - drilling results now to July, work ongoing
- Continue to generate and acquire new projects with the objective of attracting JV funding or creating alliances.

