

The background features a dark blue field with a faint, large-scale geometric pattern of concentric circles and radial lines, resembling a stylized sun or a radar screen. A solid orange vertical bar is positioned on the left side of the image. The Stavelly Minerals logo is located in the upper right quadrant, featuring the word "STAVELY" in a large, bold, white sans-serif font, with the word "MINERALS" in a smaller, white sans-serif font directly beneath it. The logo is partially overlaid by a circular graphic element consisting of a dark blue center and an orange ring.

STAVELY
MINERALS

NOOSA MINING CONFERENCE

July 2019

Disclaimer

This presentation contains only an overview of Stavely Minerals Limited ("Stavely" or the "Company") and its activities and operations. The contents of this presentation, including matters relating to the geology and exploration potential of the Company's projects, may rely on various assumptions and subjective interpretations which it is not possible to detail in this presentation and which have not been subject to any independent verification.

This presentation contains a number of forward-looking statements. Known and unknown risks and uncertainties, and factors outside of the Company's control, may cause the actual results, performance and achievements of the Company to differ materially from those expressed or implied in this presentation.

To the maximum extent permitted by law, Stavely does not warrant the accuracy, currency or completeness of the information in this presentation, nor the future performance of the Company, and will not be responsible for any loss or damage arising from the use of the information.

The information contained in this presentation is not a substitute for detailed investigation or analysis of any particular issue. Current and potential investors should seek independent advice before making any investment decision in regard to the Company or its activities.

STAVELY MINERALS

STAVELY
MINERALS

ASX Code – SVY

Share Price - \$0.23

Cash (31/03/19) - \$0.76M*

**Excludes \$4.2m raising / SPP, \$2m drilling fund and \$0.5m Victorian Gov't co-funding*

Shares on Issue – 181.3M

Market Cap - \$41.7M

Management & Staff ~30% equity

Directors

Chris Cairns

Executive Chairman

Jennifer Murphy

Technical Director

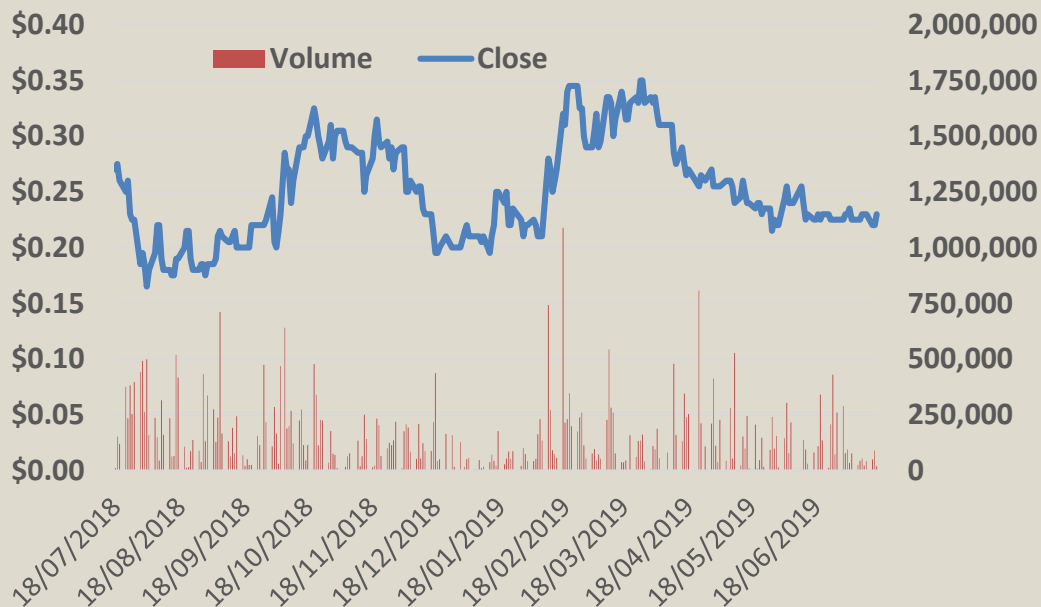
Peter Ironside

Non-executive Director

Amanda Sparks

Non-executive Director

& Company Secretary



STAVELY MINERALS BUSINESS UNITS



Two main business units:

1. Exploring for giant copper-gold porphyries in western Victoria
 - Thursday's Gossan with recent drill intercepts including:
 - **952m at 0.23% copper***, including
 - **10m at 2.43% copper and 0.30g/t gold**, and
 - **38.3m at 1.59% copper and 0.27g/t gold**, and
 - **392m at 0.32% copper*** including
 - **18m at 3.62% Cu, 0.28g/t Au and 15g/t Ag**
 - Multiple additional porphyry targets
2. Gold exploration in north-east Tasmania and Ravenswood, Queensland
 - The Mathinna Goldfield produced ~300,000oz at 26g/t gold pre-1932

*see ASX announcements 12 March 2019 and 23 April 2019, available from www.stavely.com.au

STAVELY MINERALS BUSINESS UNITS



Stavely's business units reflect two strong resource market thematics:

1. Tier 1 copper-gold porphyry

- ✓ July 2013 – China Molybdenum Co Ltd buys 80% of the North Parkes copper-gold porphyry assets from Rio Tinto for **US\$820m**
- ✓ March 2019 – Newcrest buys a 70% interest in the Red Chris copper-gold porphyry in British Columbia for **US\$806.5m**
- ✓ Newcrest and BHP acquire equity interests (15.23% and 11.2% respectively) in SolGold Plc 85% owner of the Alpala copper-gold porphyry in Ecuador. SolGold's market cap is **£737m**

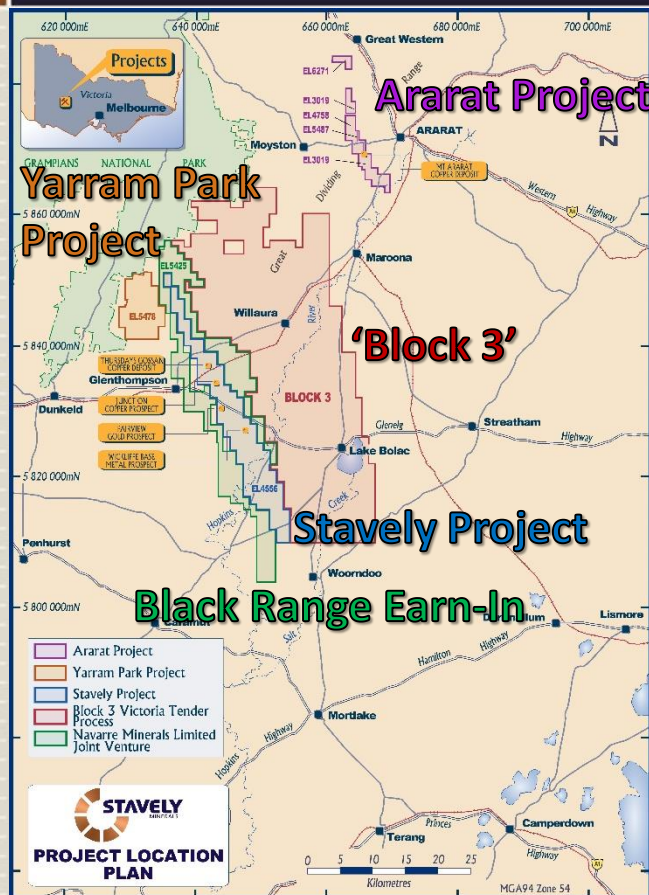
2. High-grade gold

- ✓ Kirkland Lake Gold (ASX:KLA) 12 months ▲ 145%
- ✓ Bellevue Gold (ASX:BGL) 12 months ▲ 367%



PROJECTS

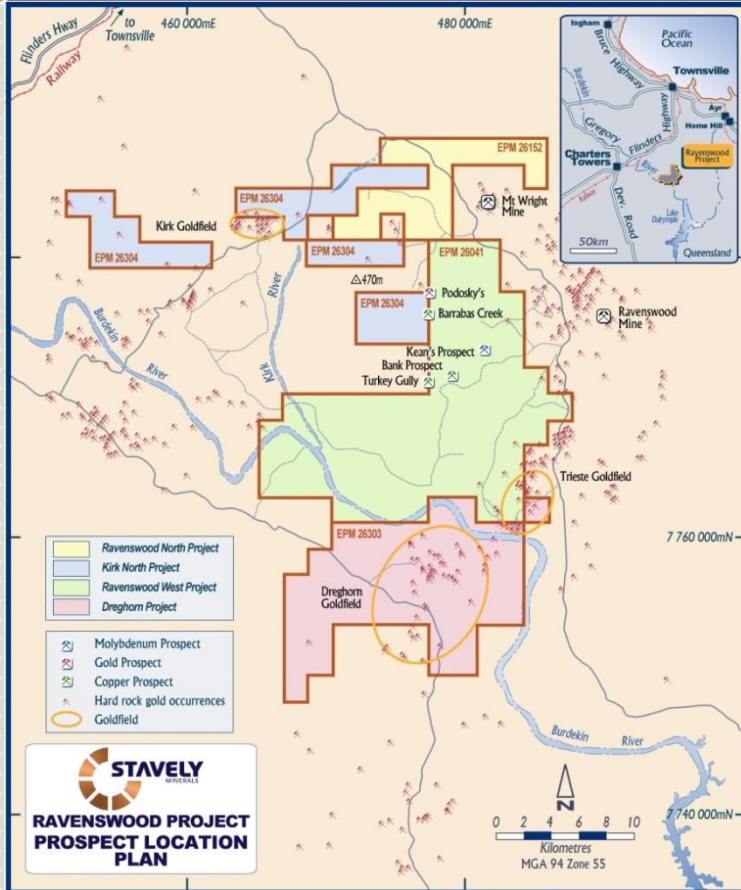
VICTORIAN PROJECT LOCATIONS



The Ararat Project is prospective for VMS base metals-gold and 'Stawell-style' gold mineralisation.

The Stavely, 'Block 3', Yarram Park and Black Range Projects are prospective for ancient porphyry copper-gold and VMS base metals-gold mineralisation.

QUEENSLAND PROJECT LOCATION

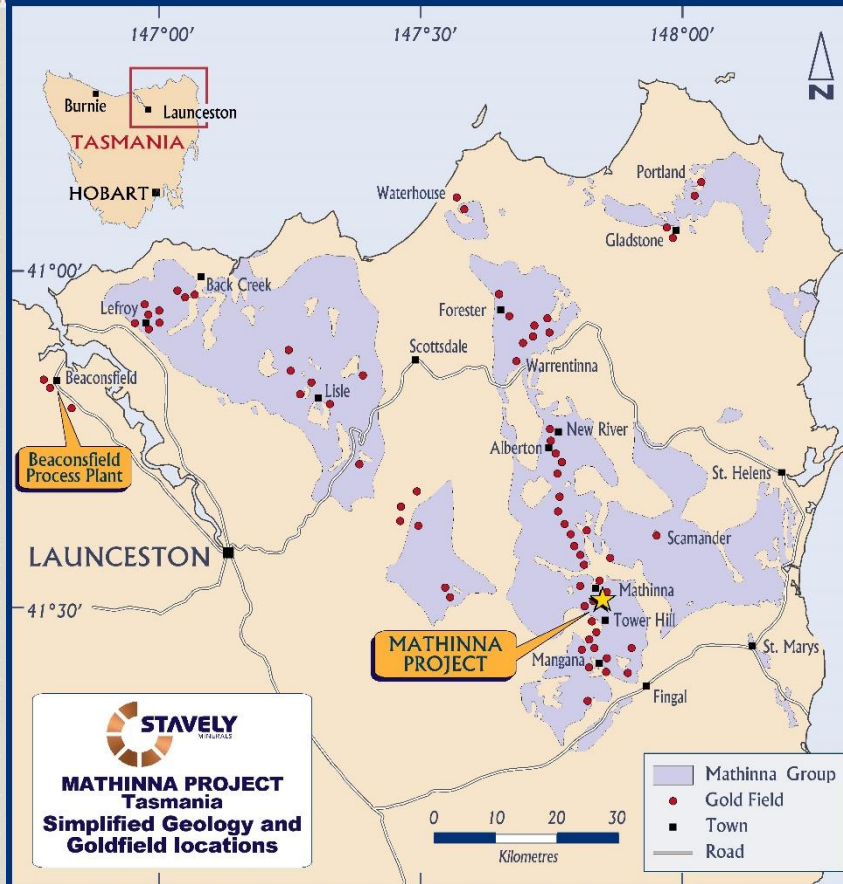


The Ravenswood Project is prospective for:

- porphyry copper-moly-gold,
- quartz-sulphide vein-hosted gold
- breccia-hosted gold mineralisation
- epithermal gold
- VMS copper-gold

✓ 2 targets have been drill tested in April 2019 – assays pending

TASMANIA PROJECT LOCATIONS



The Mathinna Project is prospective for:

- quartz-sulphide vein-hosted gold

Produced ~300,000 ounces of gold at an average grade of 26g/t gold*

*see ASX announcement 26 November 2018 available from www.stavely.com.au

At the **Ararat Project**, hosted in a Besshi-style VMS:

- Inferred Mineral Resources of **1.3Mt at 2.0% copper, 0.5 g/t gold, 0.4% zinc and 6 g/t silver** for 30kt of contained copper

At the **Stavely Project** hosted in a secondary chalcocite-enriched blanket:

- Inferred Mineral Resources of **28Mt at 0.4% copper** for 110kt of contained copper (gold and silver not estimated)

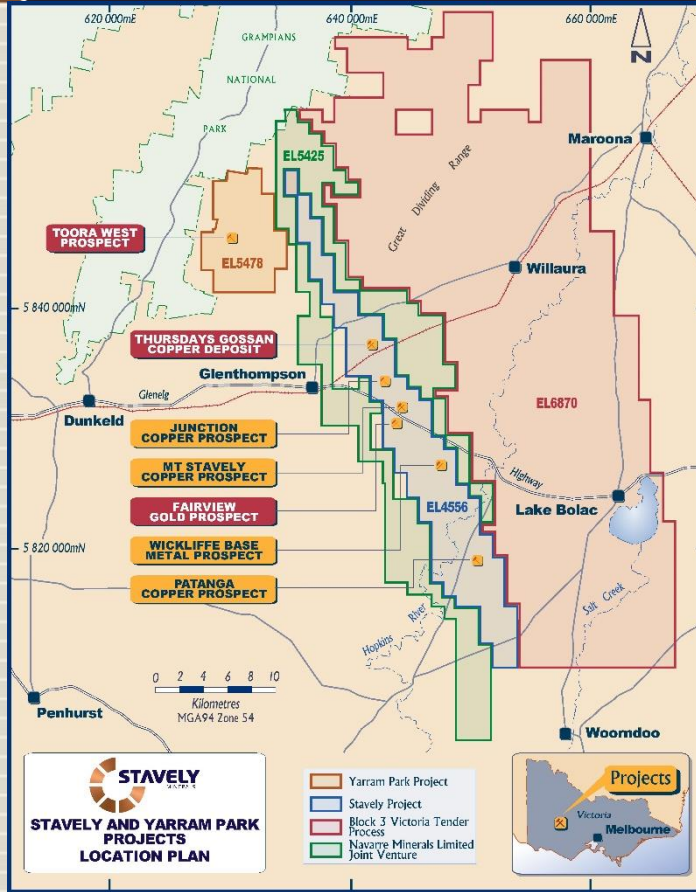
¹ reported in compliance with JORC 2012, see ASX announcement 8 September 2015, subsequent Annual Reports and available from www.stavely.com.au



**PORPHYRY DISCOVERY
OPPORTUNITIES:**

**THURSDAY'S GOSSAN, MOUNT
STAVELY AND OTHERS**

STAVELY VOLCANIC BELT

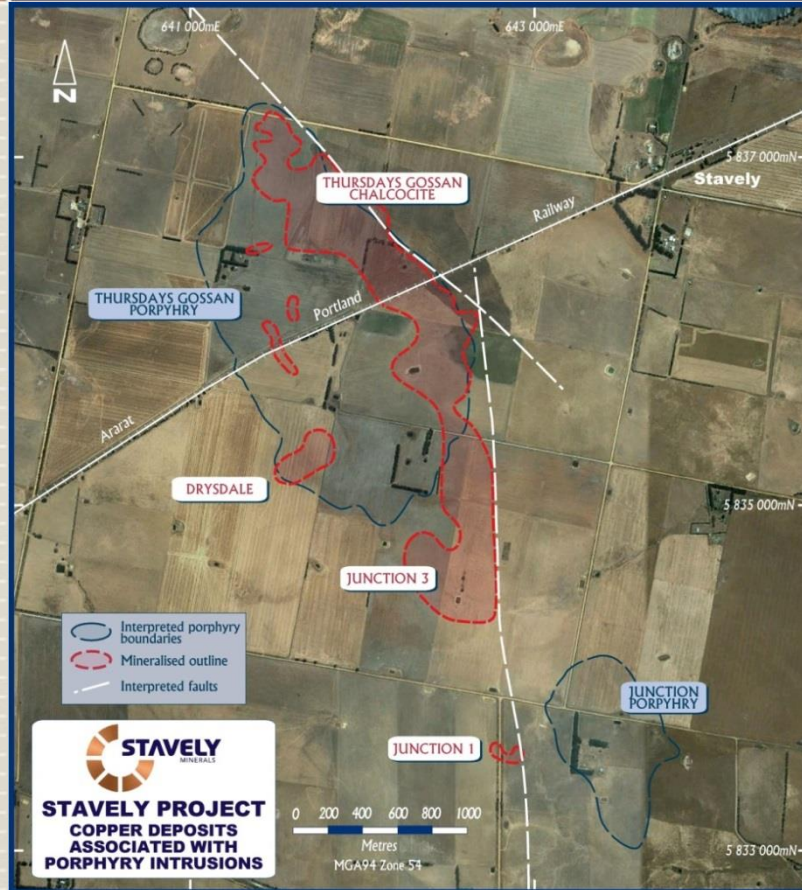


Stavely has the largest and most strategic tenement holding in the belt

- Thursday's Gossan porphyry
- Toora West porphyry prospect
- Junction porphyry
- Mount Stavelly porphyry
- Fairview Gold prospect
- Wickliffe VMS prospect
- Patanga copper prospect

Recently granted EL6870 (Block 3)

THURSDAY'S GOSSAN PORPHYRY



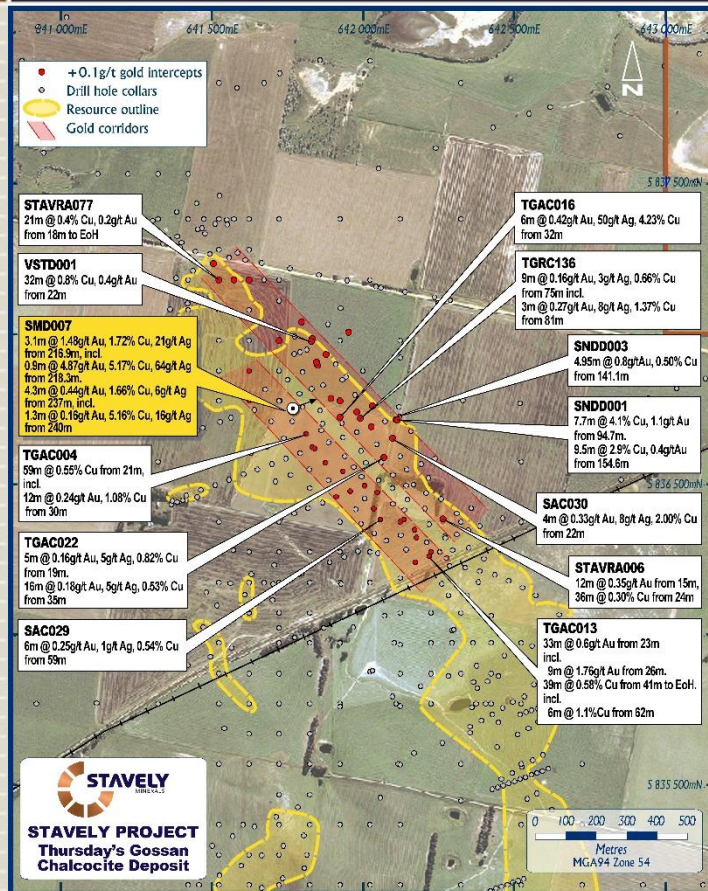
Thursday's Gossan Chalcocite Blanket

Inferred Mineral Resources of **28Mt at 0.4% copper** for 110kt of contained copper

✗ **Shock!! silver and gold often not assayed but known to be there**

✓ Rail line crosses the project and goes direct to a deep water port at Portland

THURSDAY'S GOSSAN PORPHYRY

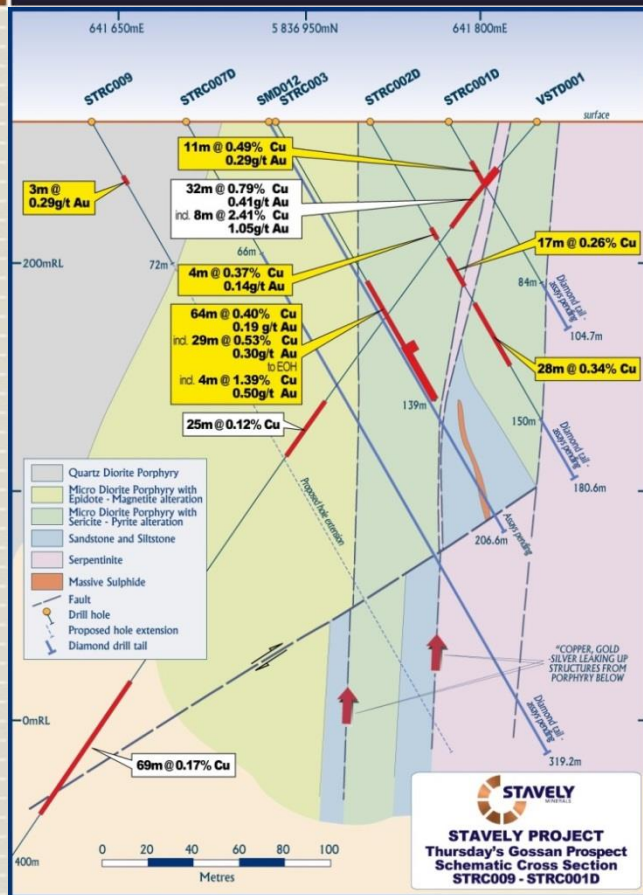


This Time Last Year...

Drilling had focussed on two parallel copper-gold mineralised trends at the northern end of the chalcocite blanket – eg:

- ❖ 7.7m at 4.1% copper and 1.1g/t gold
- ❖ 9.5m at 2.9% copper and 0.4g/t gold
- ❖ 32m at 0.8% copper and 0.4g/t gold

THURSDAY'S GOSSAN PORPHYRY



Thursday's Gossan RC Drilling (north section)

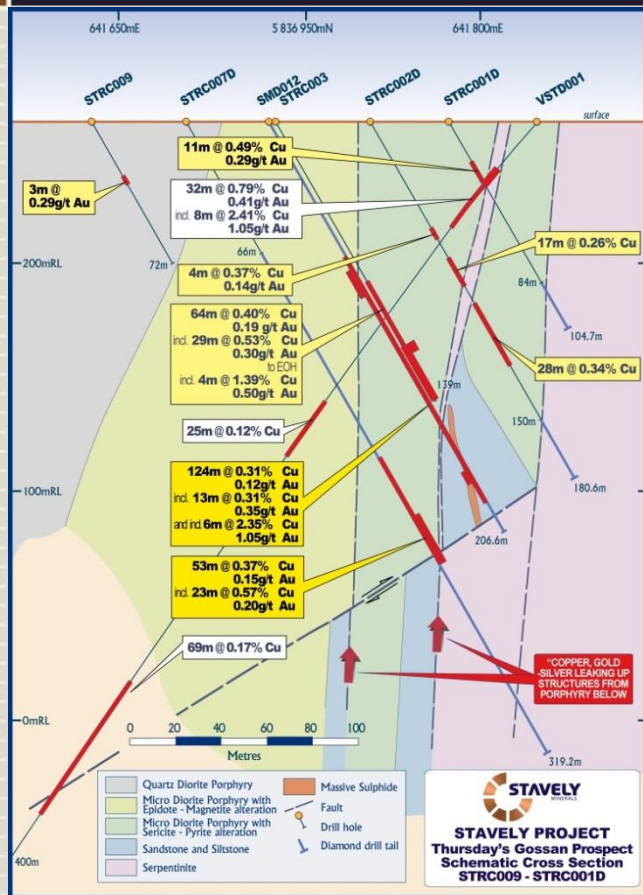
Shallow RC drill results:

- **64m at 0.40% copper and 0.19g/t gold**, including
 - **29m at 0.53% copper and 0.3g/t gold** to end of hole
- **11m at 0.49% copper and 0.29g/t gold**, and

A number of RC drill holes stopped in grade.

see ASX announcements on 03/07/2017, 23/08/2017 and 05/09/2017 and available from www.stavely.com.au

THURSDAY'S GOSSAN PORPHYRY



Thursday's Gossan Diamond Tails (north section)

RC drill holes continued / twinned with diamond drill 'tails'. Diamond drill results:

- 124m at 0.31% copper and 0.12g/t gold, and
- 53m at 0.37% copper and 0.15g/t gold, including
 - 23m at 0.57% copper and 0.20g/t gold

see ASX announcement 23/08/2017 and available from www.stavely.com.au

THURSDAY'S GOSSAN PORPHYRY



Additional diamond drill results:

- 314m at 0.11% copper
- 283m at 0.16% copper
- 194m at 0.16% copper
- 85m at 0.35% copper and 0.18g/t gold
- 124m at 0.31% copper and 0.12g/t gold
- 92m at 0.34% copper and 0.12g/t gold, incl
 - 30m at 0.50% copper and 0.22g/t gold

These broad intercepts are **NOT** from the potassic core of this porphyry – we have yet to drill into that zone.

When we do, we expect better copper grades and MUCH better gold grades.

see ASX announcements 05/09/2017, 18/12/2018 & 29/05/2018 and available from www.stavely.com.au

What are 'normal' porphyry grades?



Cadia East Underground Indicated Mineral Resource (Newcrest, 2018):

2.9Bt at **0.26% copper and 0.36g/t gold**

(34 million ounces of gold and 7.6 million tonnes of copper)

Red Chris Measured and Indicated Mineral Resources (Imperial Metals, 2012):

1.25Bt at **0.32% copper and 0.32g/t gold**

(12.9 million ounces of gold and 4.0 million tonnes of copper)

Alpala Indicated and Inferred Mineral Resource (SolGold, Nov. 2018):

2.95Bt at **0.37% copper and 0.24g/t gold**

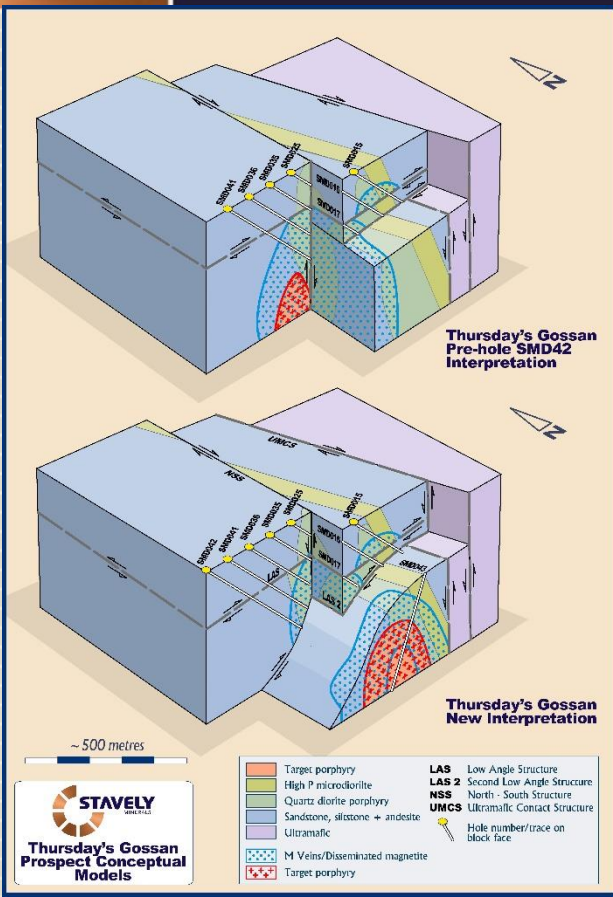
(23.2 million ounces of gold and 10.9 million tonnes of copper)

THURSDAY'S GOSSAN PORPHYRY



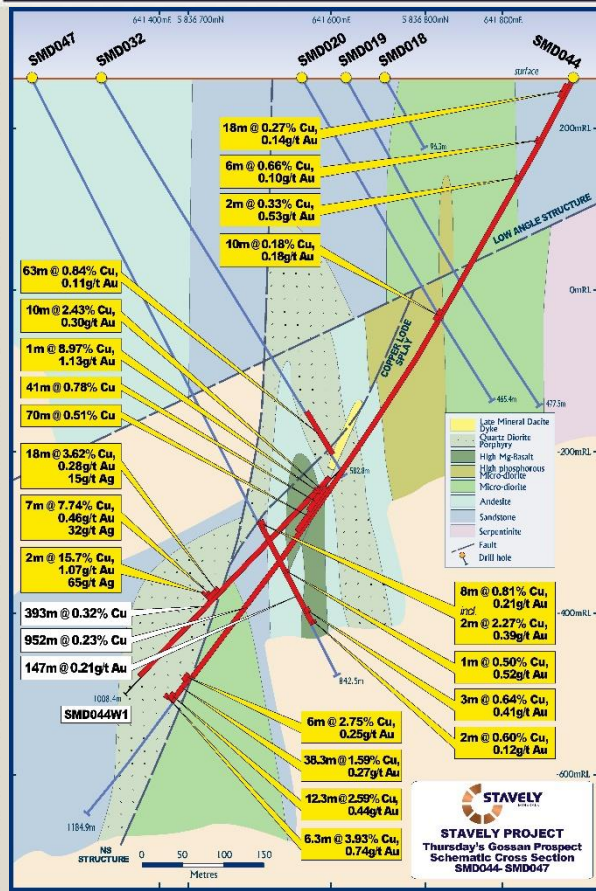
SMD042 and SMD044

- SMD042 drilled just prior to Christmas
- Intercepted the NS structure 225m earlier than expected
- Required a re-think of the structural geometries
 1. The LAS was not mineralised to the north but was to the south
 2. The NS structure is mineralised with higher grade to the south
- ❖ Therefore, with the NS structure shallowing to the west at depth, the porphyry had to be 'under' it on the east side
- ❖ If it's on the east side of the NS structure, it must be south due to the dextral movement on the NS structure (right side towards south)



see ASX announcement 5/09/2018 and available from www.stavely.com.au

THURSDAY'S GOSSAN PORPHYRY

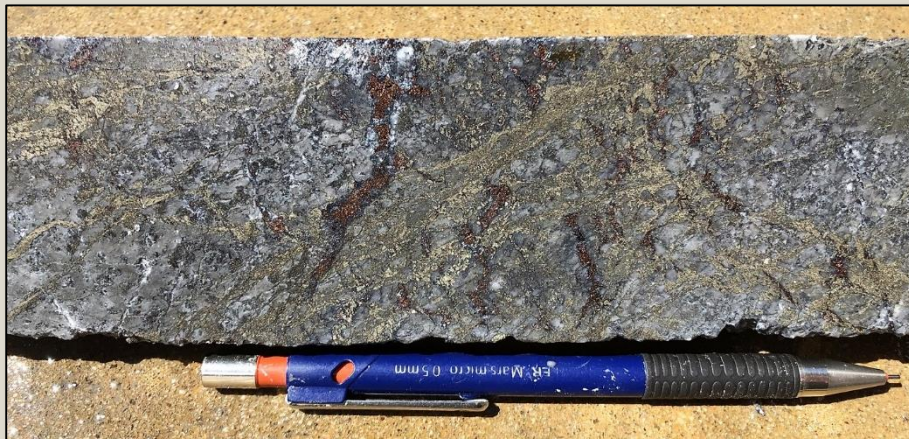


SMD044

- Large low-grade intercept of **952m at 0.23% copper** – reflects a very large system
- Included 70m of chalcopyrite mineralisation – **70m at 0.51% copper** including:
 - 10m at 2.43% copper and 0.30g/t gold
- Intercepted another interval of chalcopyrite-bornite-chalcocite-covellite mineralisation:
 - 38.3m at 1.59% copper and 0.27g/t gold, including:
 - 6m at 2.75% copper and 0.25g/t gold, and
 - 12.3m at 2.59% copper and 0.44g/t gold

see ASX announcement 12/03/2019 and available from www.stavely.com.au

THURSDAY'S GOSSAN PORPHYRY



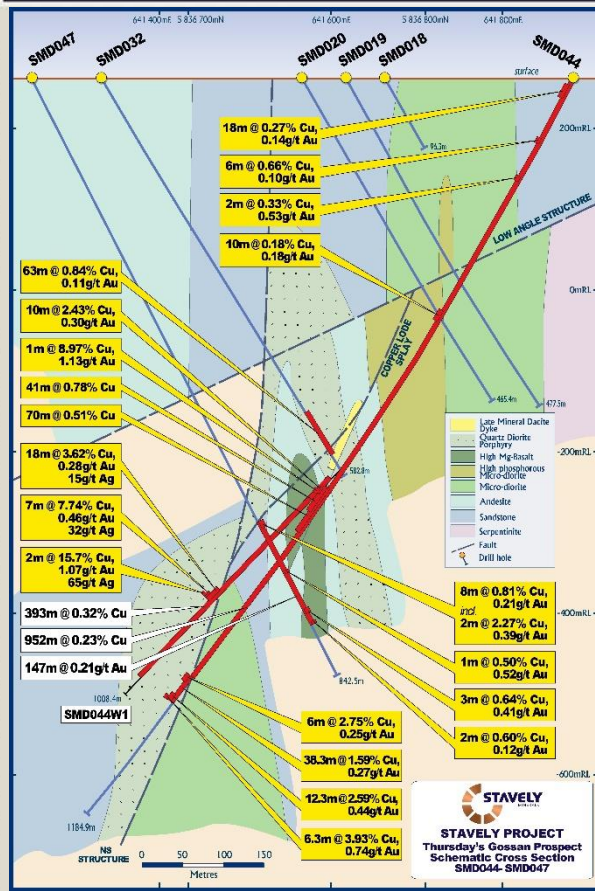
SMD044

Silica-pyrite mineralisation cut
by bornite-chalcocite at
924.3m



see ASX announcement
18/02/2019 and available
from www.stavelly.com.au

THURSDAY'S GOSSAN PORPHYRY



SMD044W1

- Large low-grade intercept of **393m at 0.32% copper**
- Intercepted another interval of chalcopyrite-bornite-chalcocite-covellite mineralisation:
 - **18m at 3.62% copper, 0.28g/t gold and 15g/t silver, including**
 - **7m at 7.74% copper, 0.46g/t gold and 32g/t silver, including**
 - **2m at 15.7% copper, 1.07g/t gold and 65g/t silver**

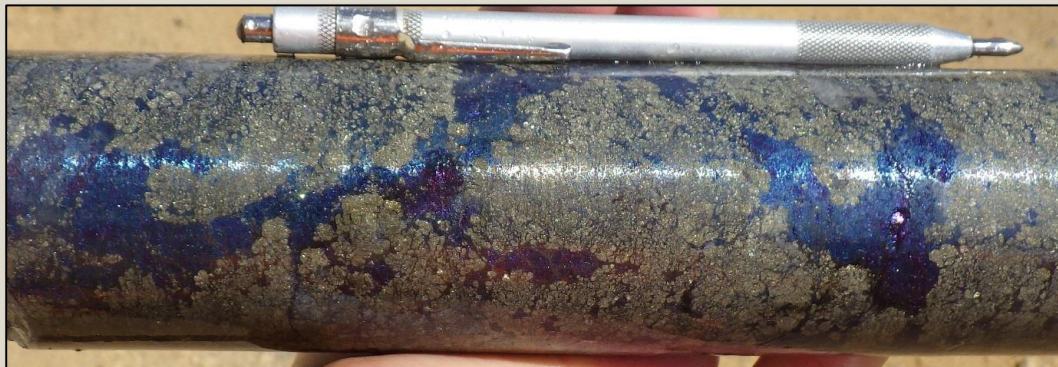


Photo 1. Pyrite vein with bornite-covellite-chalcocite(+digenite) veining at 859.0m in SMD044W1.

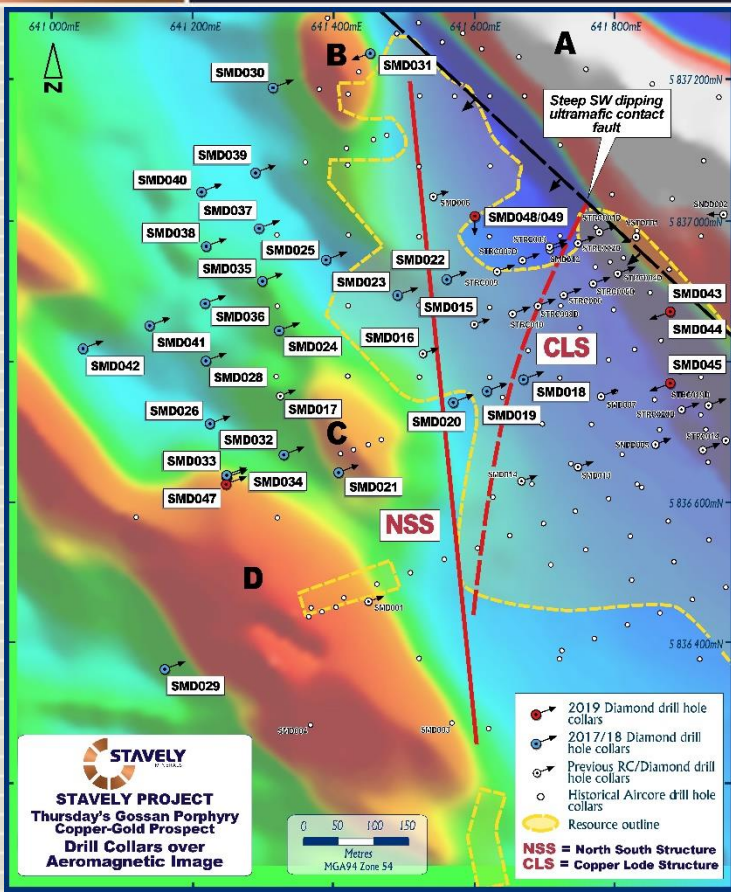


Photo 2. Chalcocite(+digenite)-bornite-covellite veining at 859.0m in SMD044W1
(This photo is of the other side of the previous photo)

SMD044W1 – 392m at 0.32% copper incl.

- 18m at 3.62% Cu, 0.28g/t Au and 15g/t Ag, including:
- 7m at 7.74% Cu, 0.46g/t Au and 32g/t Ag, including:
 - 2m at 15.7% Cu, 1.07g/t Au and 65g/t Ag

THURSDAY'S GOSSAN PORPHYRY



Copper Lode Splay (CLS)

Intercepted in a couple of shallower holes:

- STRC019D – 3m at 2.65% copper and 1.17g/t gold
- SMD015 - 9m of 2.62% copper and 0.28g/t gold from 248m, including
 - 4m of 5.41% copper and 0.35g/t gold, including
 - 1m at 14.75% copper and 0.33g/t gold
 - 4m at 5.85% copper and 0.27g/t gold, from 196m including
 - 1m at 10.75% copper and 0.60g/t gold
- SMD032 - 6m at 6.73% copper, 0.84g/t gold, including
 - 1m at 22.8% copper, 0.91g/t gold
 - 2m at 2.43% copper, 0.28g/t gold

THURSDAY'S GOSSAN PORPHYRY



Copper Lode-style (think Magma Mine veins) pyrite-chalcopyrite-bornite-covellite-chalcocite mineralisation from 542.5m in SMD032 – note the chalcocite occurs as late network veins within the more massive sulphides

see ASX announcement 18/12/2018 and available from www.stavelly.com.au

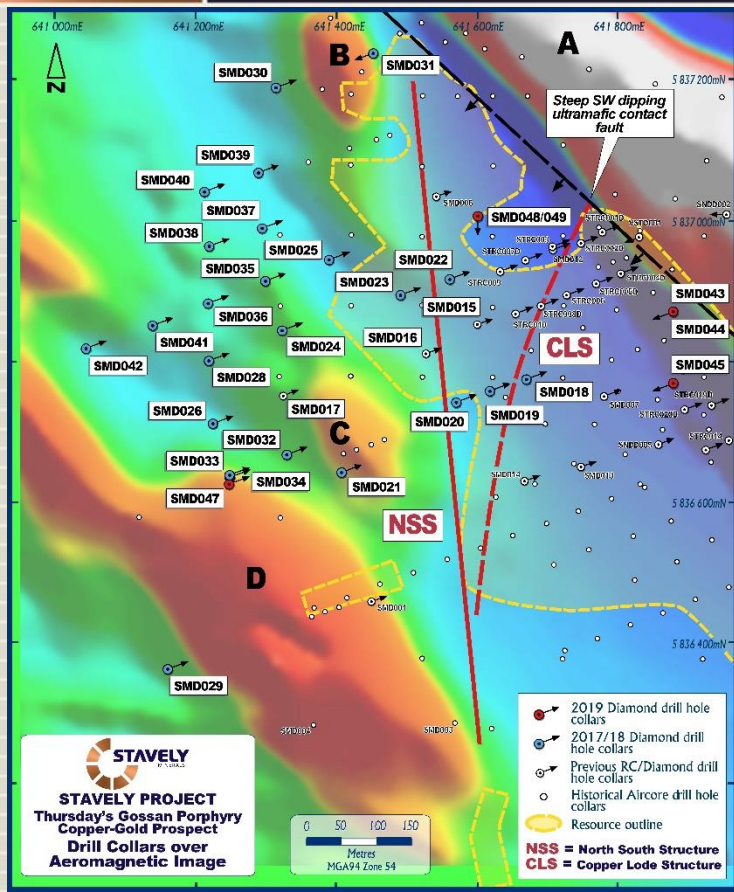
THURSDAY'S GOSSAN PORPHYRY



Copper Lode Splay

These structures are very important:

1. They are a genuine exploration target in their own right – high grade, intercepted over 400m vertically and ~500m along strike – an analogy would be the **Magma Mine, Superior Arizona** or the veins at **Butte, Montana** (“the richest hill on earth”)
2. They can be followed down to the source porphyry – eg. **Resolution Porphyry**
3. The NSS and CLS converge to the south of drill hole SMD045

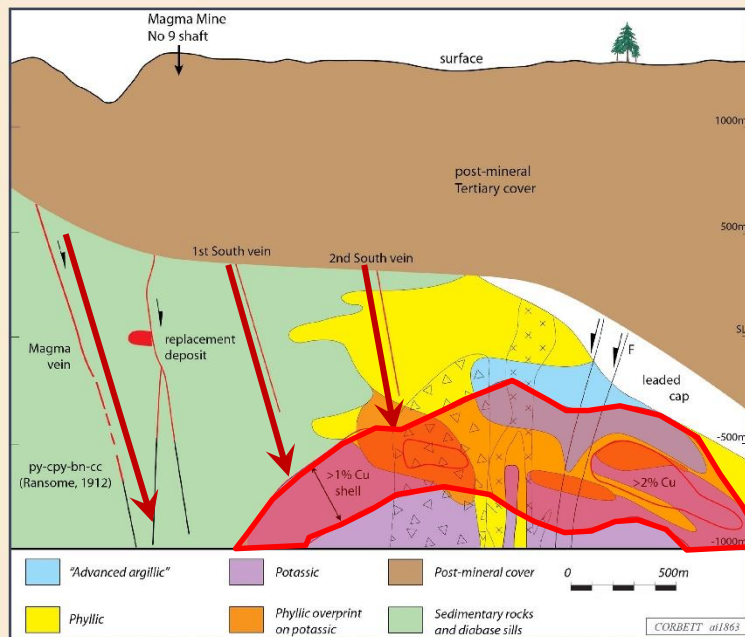


THURSDAY'S GOSSAN PORPHYRY



Magma Mine and the Resolution Porphyry

Can follow the Magma copper lode veins to the Resolution copper porphyry:
1.8Bt at 1.53% copper (Rio Tinto, 2018)



**Cross section
through the Magma Vein
and Resolution Porphyry
(along line A - A')**

(after Corbett, 2019 from Henke et al. 2012)

Animation: Following the Indicators to the Porphyry

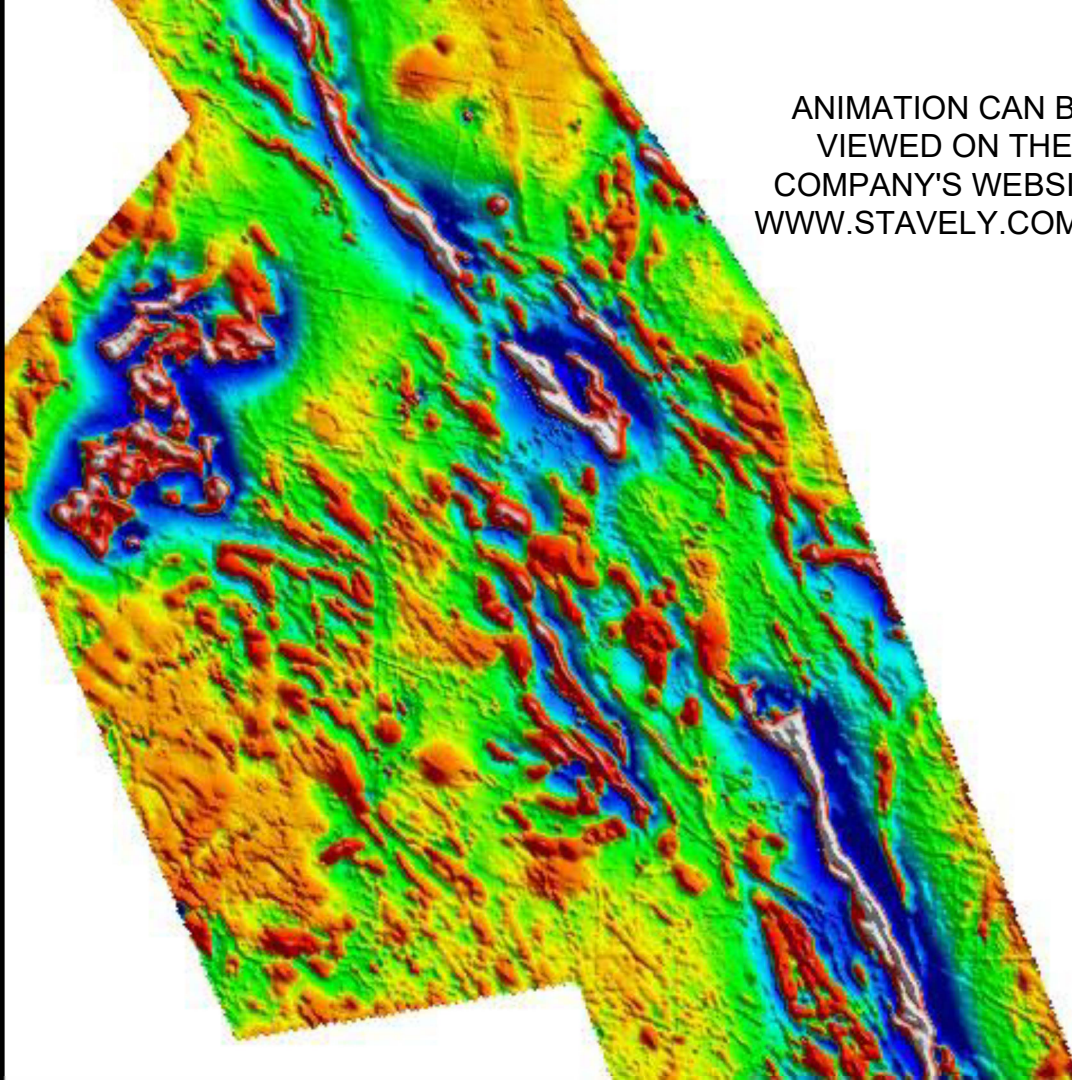
In the plane of the structures the high-grade copper-gold-silver mineralisation clearly reflects a steep southerly plunge to the mineralisation.

Additionally, and not confined to the structures, a series of independent datasets all confirm the steep southerly plunge of a 'conduit' through which the copper-gold-silver mineralising fluids have travelled from depth. A quartz diorite porphyry contemporaneous with mineralisation has been intruded into this position (pink blobs)

These datasets include:

- ✓ The white mica short-wavelength absorption feature (as a proxy for the undiluted magmatic mineralising fluid – blue blobs);
- ✓ The vanadium over scandium elemental ratio (as an indicator of a hydrous and well-oxidised fluid with significant metal carrying capacity – red blobs);
- ✓ The occurrence of pyrophyllite (a low-pH, high-temperature mineral typical of high-sulphidation epithermal systems – green disks); and
- ✓ The distribution of light isotopic $\delta^{34}\text{S}$ sulphur species (reflecting a strongly oxidised fluid).

It is expected that this 'conduit' will lead directly to the source porphyry.



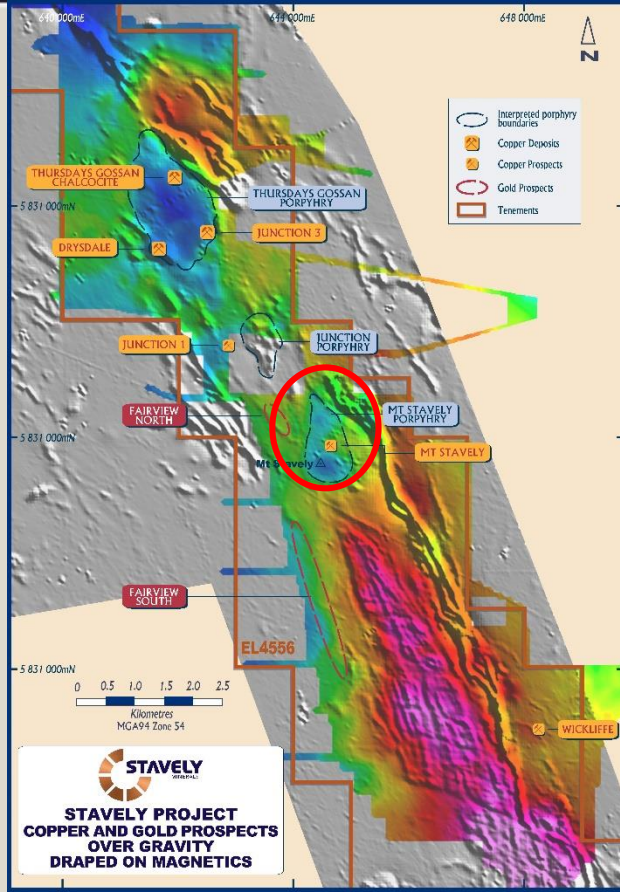
ANIMATION CAN BE
VIEWED ON THE
COMPANY'S WEBSITE
WWW.STAVELY.COM.AU

The background features a dark blue field with a faint, large-scale radial pattern of concentric arcs and radial lines. A central circular element is composed of four copper-colored segments arranged in a cross-like pattern. In the upper right, the company name "STAVELY" is written in a large, bold, white sans-serif font, with "MINERALS" in a smaller, all-caps font directly below it. On the left side, there is a vertical bar with a copper-colored top half and a white bottom half.

STAVELY
MINERALS

MOUNT STAVELY

STAVELY PROJECT



Mount Stavelly Prospect

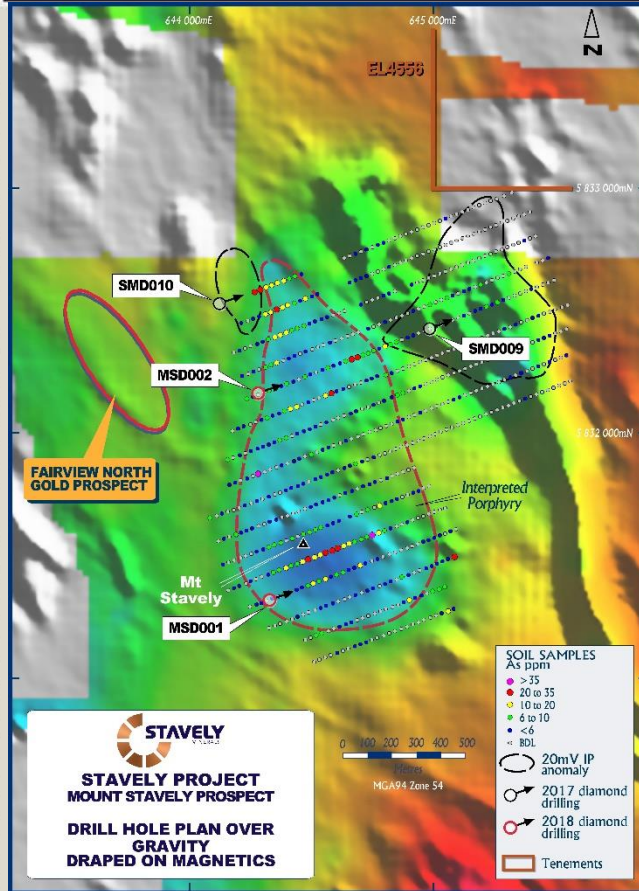
Both Thursday's Gossan and Mount Stavelly are expressed as lows in the gravity data

STAVELY PROJECT

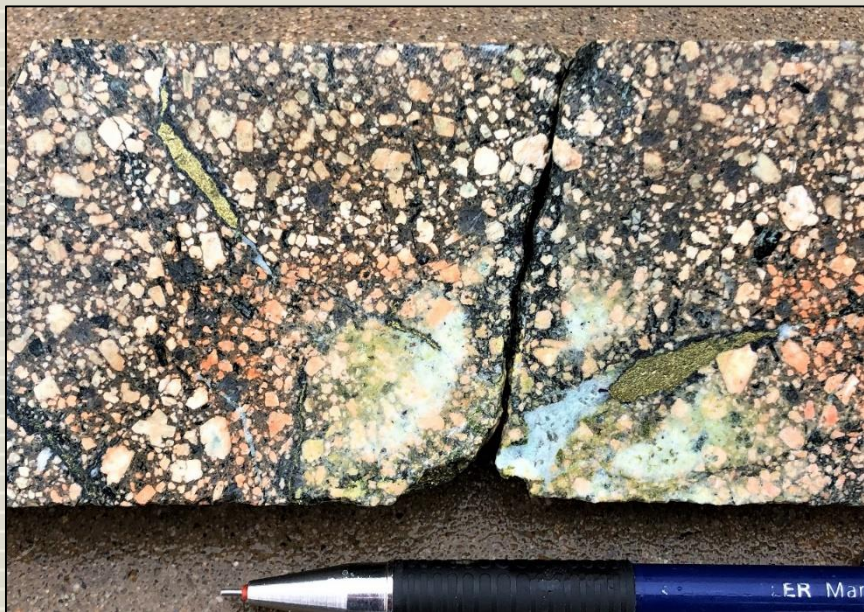
STAVELY
MINERALS

Mount Stavelly Prospect

MSD001 (the first drill hole ever into Mount Stavelly) intercepts chalcopyrite and bornite



Mount Stavely Prospect



MSD001 (the first drill hole ever into Mount Stavely)

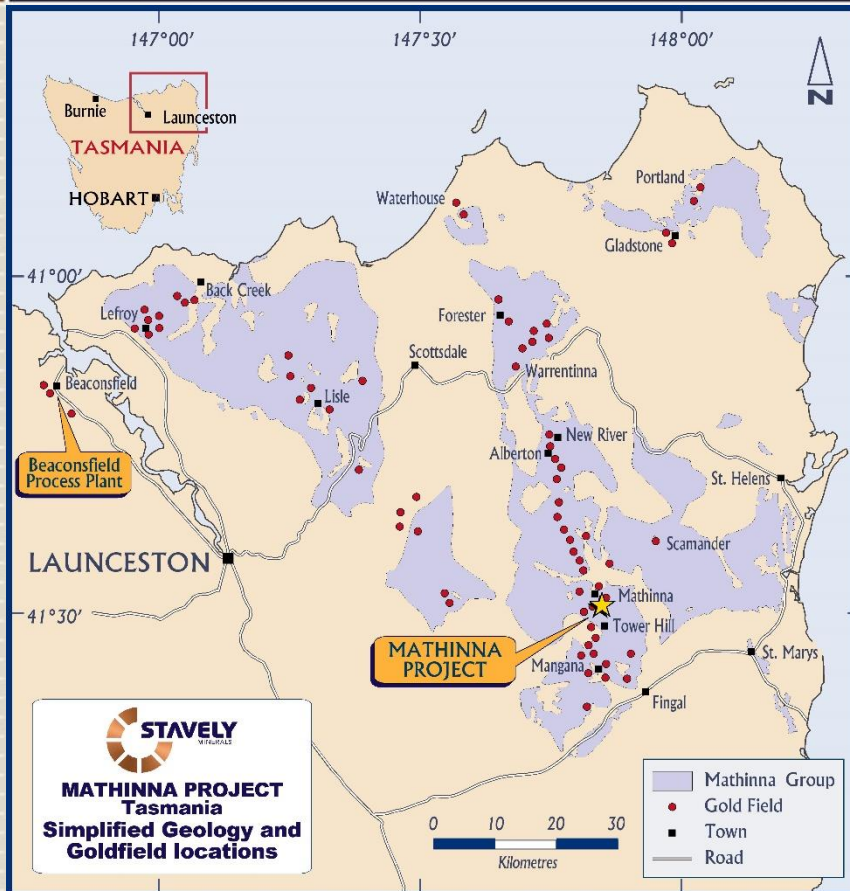
- ✓ Quartz-carbonate veins with chalcopryite rimmed by bornite
- ✓ K-spar and hematite alteration, transitional potassic
- ✓ There's another porphyry out there....



STAVELY
MINERALS

TASMANIA

MATHINNA GOLD AND BEACONSFIELD



The Mathinna Project is prospective for:

- quartz-sulphide vein-hosted gold

Produced ~300,000 ounces of gold at an average grade of 26g/t gold*

*see ASX announcement 26 November 2018 and available from www.stavely.com.au

MATHINNA GOLD PROJECT



Frontispiece.

1. NEW GOLDEN GATE AND TASMANIAN CONSOLS MINES.

MATHINNA GOLD PROJECT

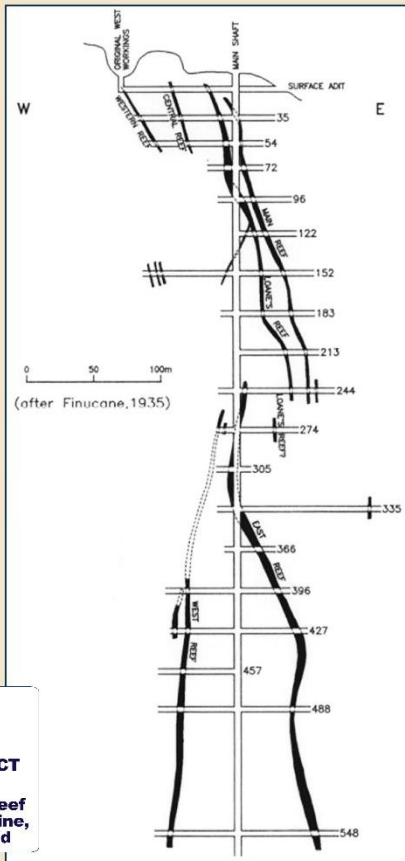


Mathinna Goldfield

To closure in 1932, the Mathinna Goldfield produced circa 300,000 ounces of gold at an average grade of 26g/t gold*

- ✓ Vertically extensive high-grade gold mineralisation
- ✓ Very little modern work done since
- ✓ Stavely granted priority rights for application for an exploration licence
- ✓ Going through the statutory processes of advertising etc.

*Tasmania Department of Mines, Geology Report No. 5

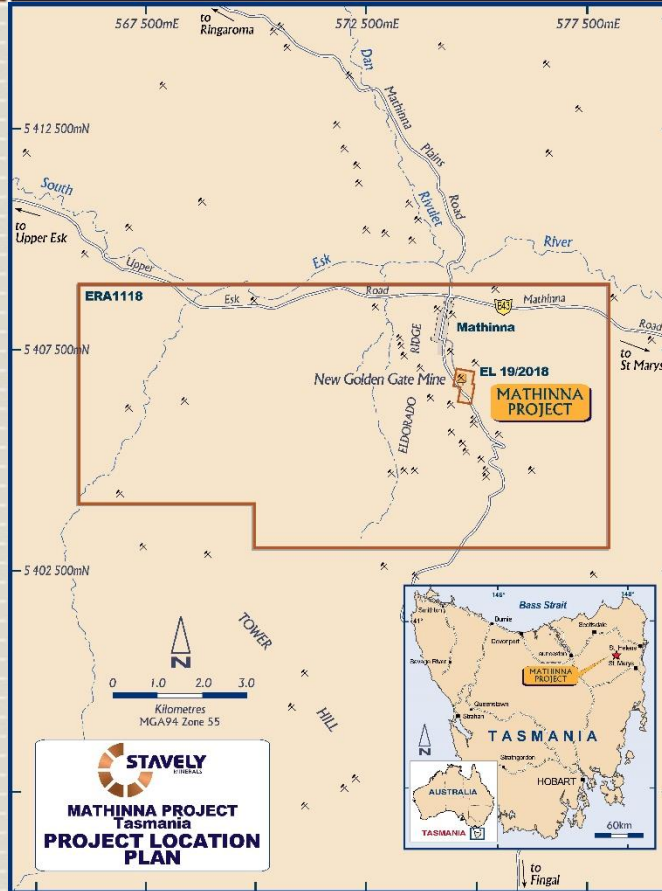


MATHINNA GOLD PROJECT



Mathinna Goldfield

Stavely (Tasmania) has just also been granted ERA1118 (68km²) covering the remainder of the high-grade Mathinna Goldfield not covered by EL19/2018



*see ASX announcement 26 November 2018 and 22 March 2019, available from www.stavely.com.au



TAKE AWAY MESSAGES

TAKE AWAY MESSAGES

Copper-Gold Porphyry Assets

- ✓ Stavely Minerals is well in the chase for a copper-gold porphyry at Thursday's Gossan
- ✓ Results to date are great **but** we are not yet in the sweet spot and grades should be very attractive when we do get there
- ✓ Drilling is progressing down the 'conduit' of high-grade mineralisation
- ✓ Other significant porphyry discovery opportunities: Toora West, Mount Stavely, Drysdale and Junction

Gold Assets

- ✓ Tasmania high-grade gold– Mathinna Goldfield, drilling to commence in October (after the winter rains)

Thank You

Contact Us:

Stavely Minerals Limited

Level 1, 168 Stirling Highway

Nedlands WA 6009

www.stavely.com.au

info@stavely.com.au

Ph: 08 9287 7630

The information in this presentation is extracted from information available to view on www.stavely.com.au. The company confirms that it is not aware of any new information or data that materially affects the information included in the original market announcement and, in the case of estimates of Mineral Resources or Ore Reserves, that all material assumptions and technical parameters underpinning the estimates in the relevant market announcement continue to apply and have not materially changed. The company confirms that the form and context in which the Competent Person's findings are presented have not been materially modified from the original market announcement.