



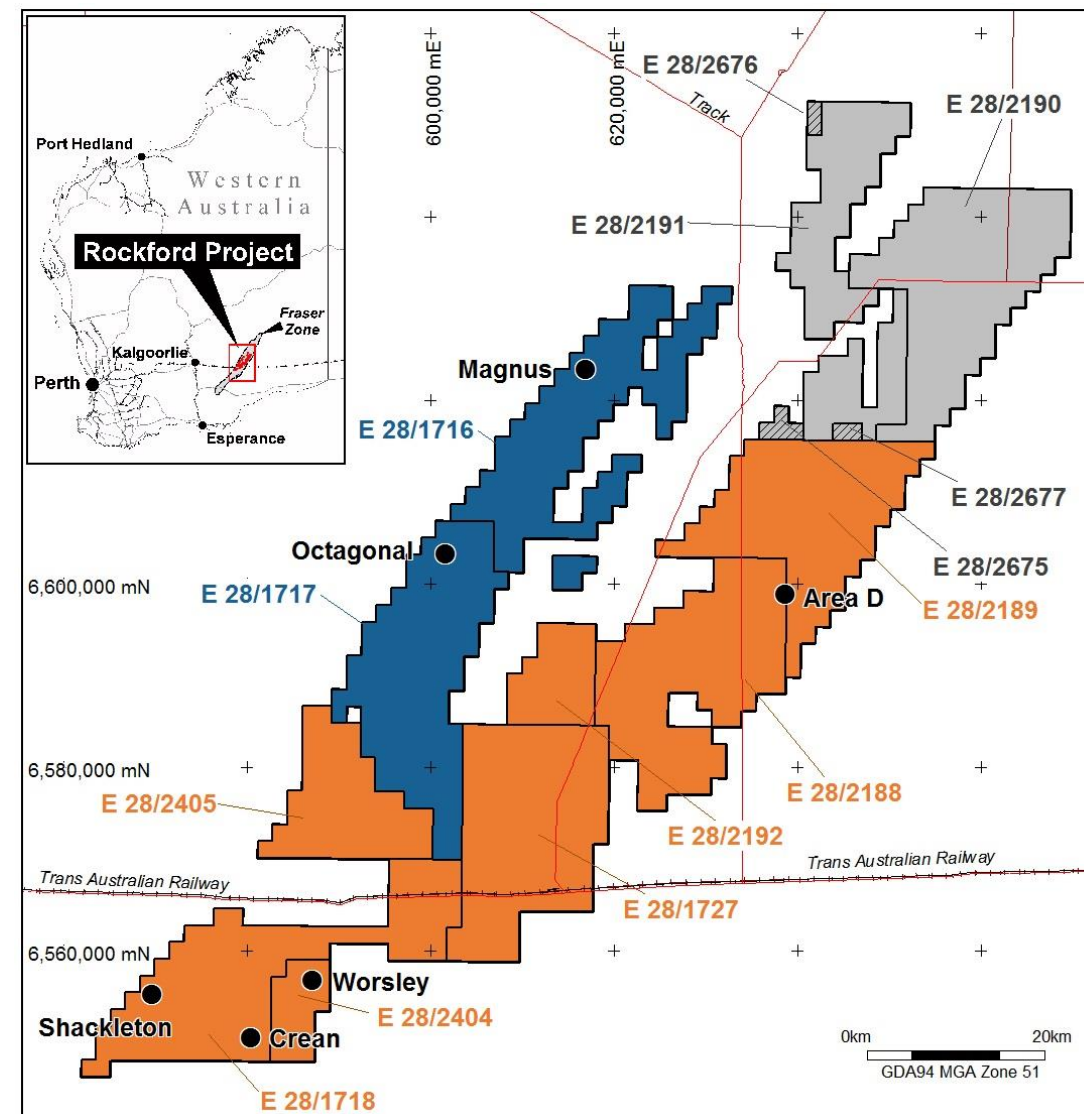
Fertile Fraser Range – “Transformational Deals”

General Shareholder Meeting – Rockford Project Update – 27 September 2019

CAPITAL RAISE AND JOINT VENTURES

- Capital raise \$9.8M @ 3.6 cps to IGO
- New Creasy Group JVA @ 3.6 cps

JVA Title	Tenement	Area km ²	Ownership
Rockford JVA 2019	E28/2190	355	IGO 60% / Creasy 30% / Legend 10%
	E28/2191	278	
Legend/IGO JVA 2019	E28/2675	11.8	IGO 70% / Legend 30%
	E28/2676	5.9	
	E28/2677	5.9	
Ponton JVA 2019	E28/1716	355	Legend 70% / Creasy 30%
	E28/1617	354	
Ponton JVA 2015	E28/1718	353	Legend 70% / Creasy 30%
	E28/1727	353	
Rockford JVA 2015	E28/2188	354	Legend 70% / Creasy 30%
	E28/2189	331	
	E28/2192	91	
NA	E28/2404	58.8	Legend 100%
	E28/2405	179.7	



“Transformational Deals with Independence Group and Creasy Group”

Why Explore in the Albany Fraser Belt?

Underexplored region with high potential for discovery



- Orthomagmatic Ni-Cu deposits often occur along entire belts
- The Thompson, Pechenga, Raglan and Sveccofenian Belts all have multiple deposits and prospects along them
- The Albany Fraser Belt is demonstrating it too has Ni-Cu sulphides along its entire length
- The presence of Ni-Cu sulphides in mafic-ultramafic rocks are the best indicators that massive Ni-Cu sulphide ore deposits likely occur within the belt

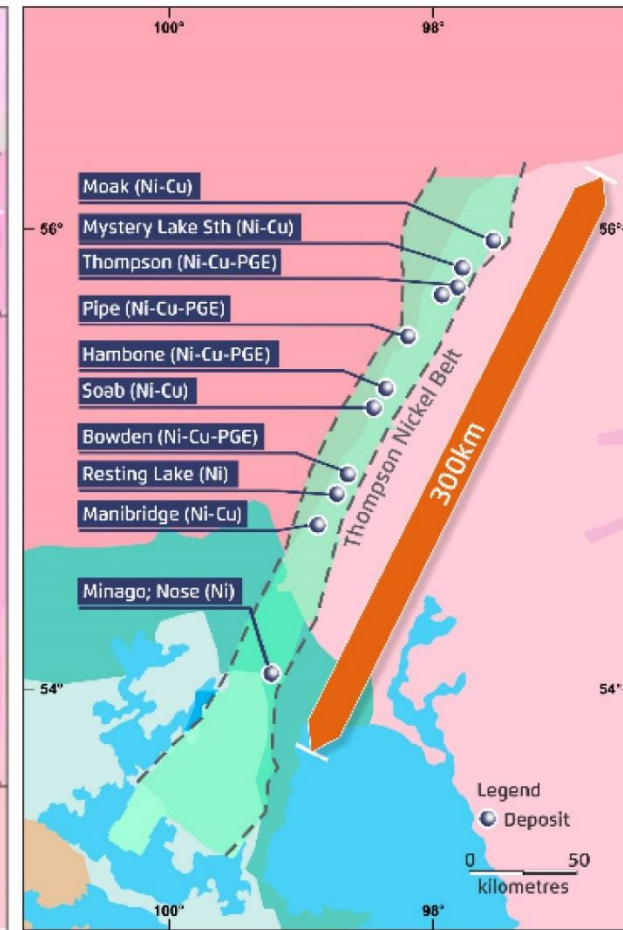
“IGO believes in the Albany Fraser Belt and is positioning itself of exponential growth.”

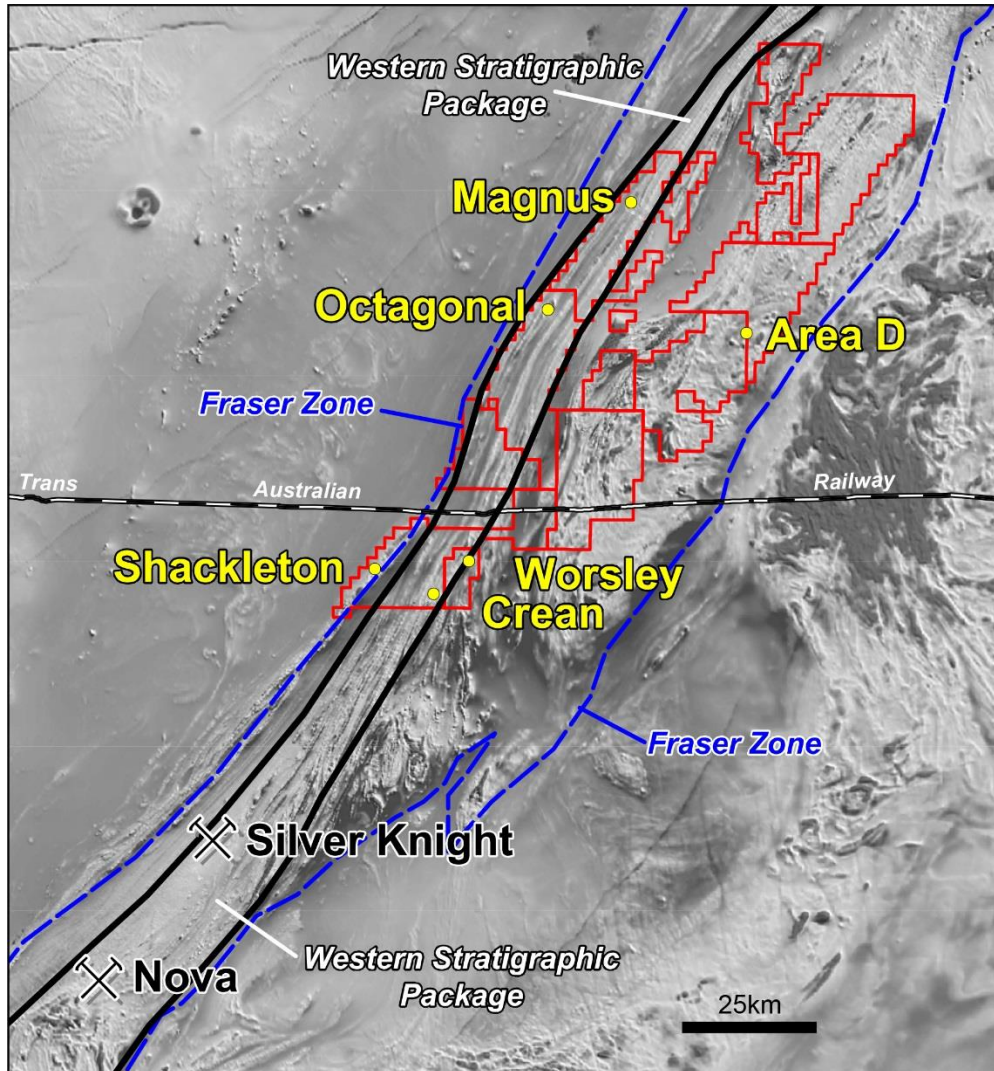
1) Silver Knight details released by Creasy Group Application for M28/395 20 July, 2018; Octagonal details released by Legend Mining ASX Release 9 July, 2019

Albany Fraser Belt (0.3Mt Ni metal)



Thompson Belt (2.7Mt Ni metal)





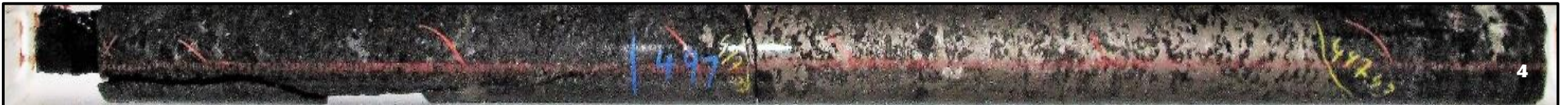
NEW JOINT VENTURE AGREEMENTS

- **New JVA with Creasy Group 70/30**
 - Tenements contiguous with existing
 - 709km² - total project now 3088km²
 - Nickel-copper sulphides at Octagonal
 - Increased exposure to Western Stratigraphic Package

- **Two new JVAs with Creasy Group & IGO**
 - IGO technical & financial impetus
 - Legend interest now free carried to mining joint venture

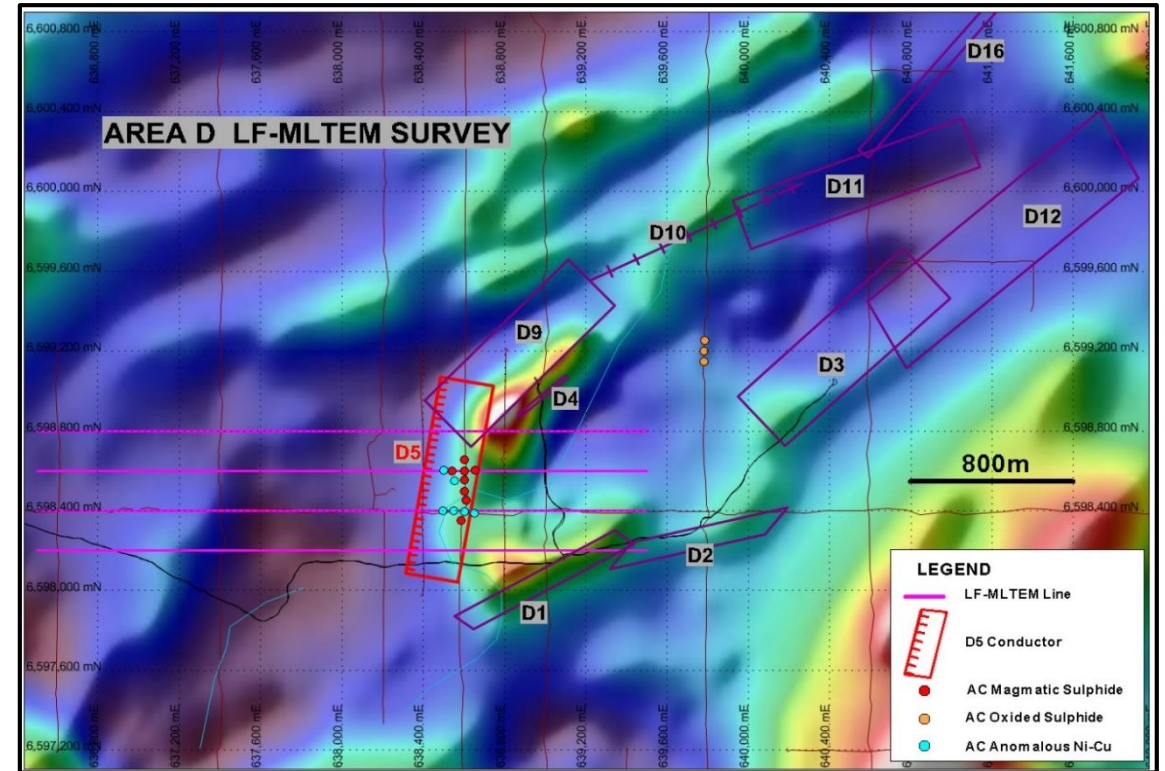
Octagonal prospect: Massive sulphide containing pyrrhotite-pentlandite-chalcopyrite hosted in olivine bearing gabbro-norite.

Drillhole OCT002: 0.36m @ 0.89% Ni, 0.29% Cu, 0.12% Co from 497.07m.



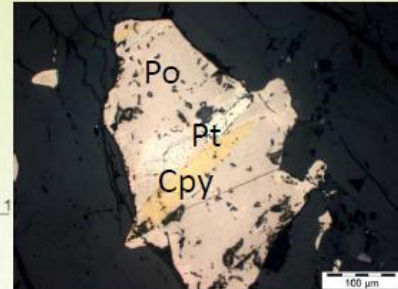
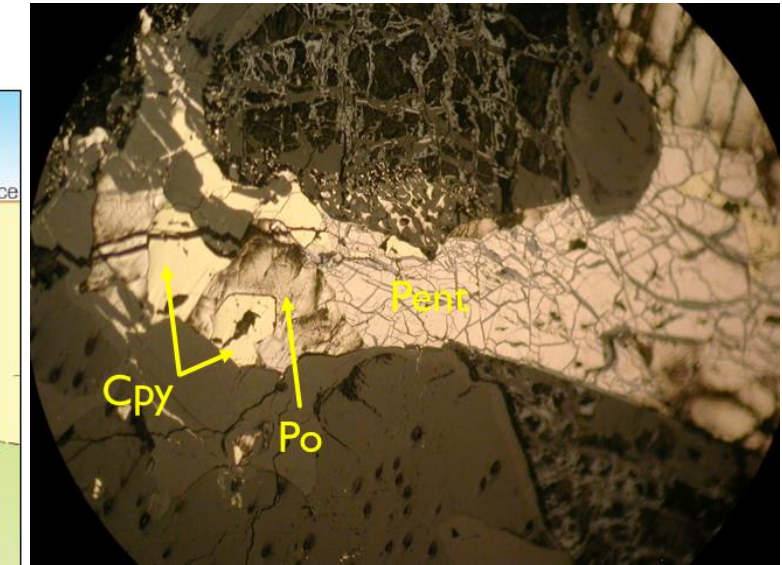
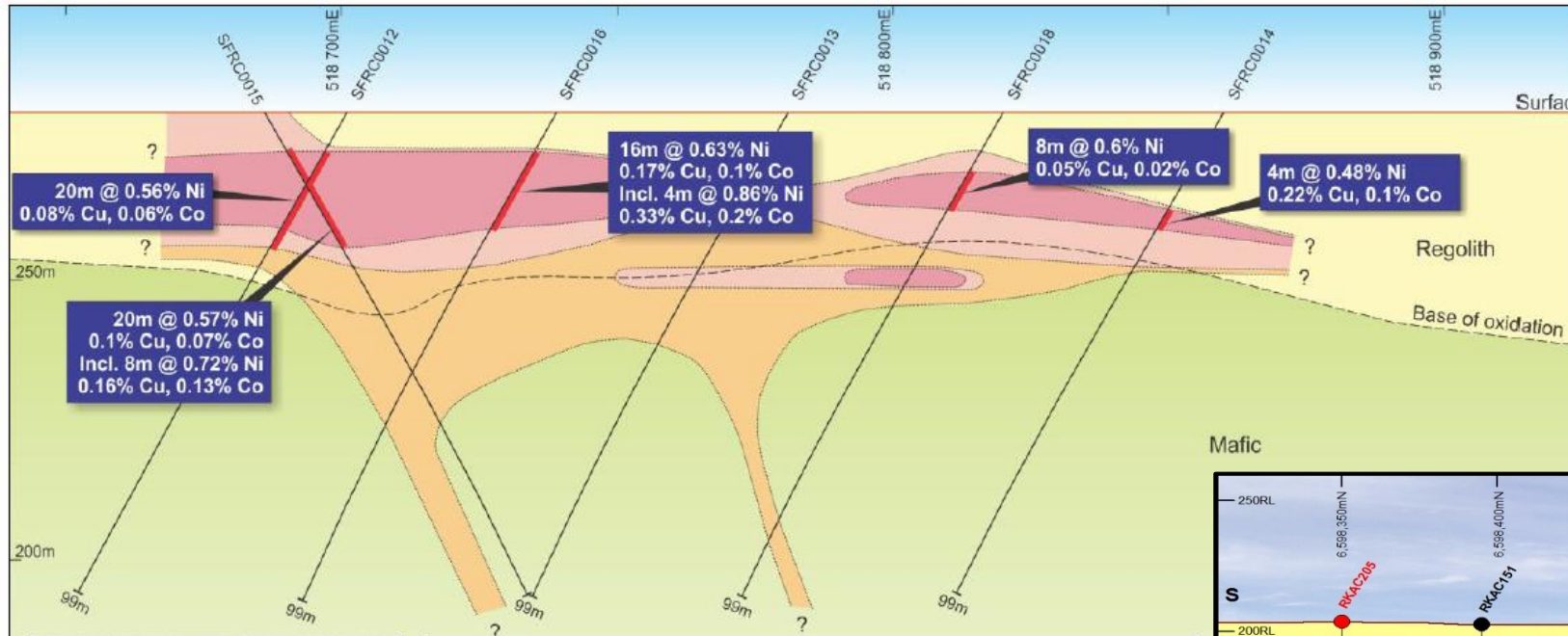
LF MLTEM SURVEY AT AREA D

- 4 X 3km lines/200m line spacing
- 100m stations along lines (200m x 200m loops)
- Very low frequencies designed to identify massive sulphide bodies
- Diamond drilling scheduled October 2019



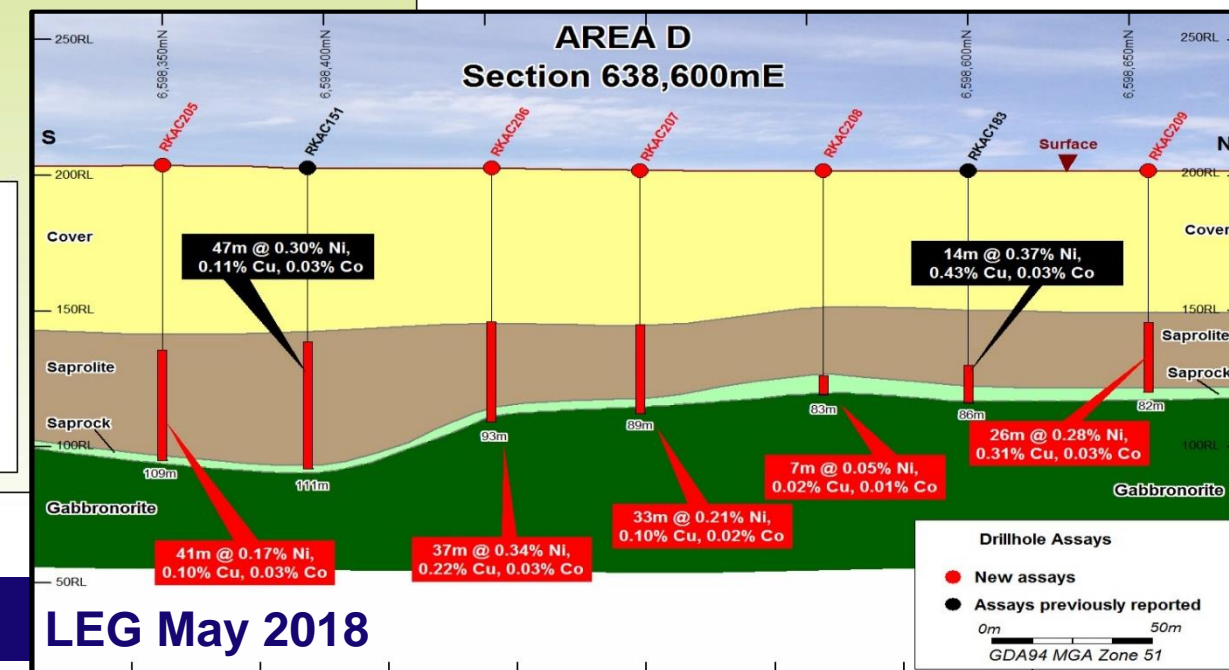
Fraser Range JV:

the Eye nickel-copper anomaly – cross section of drilling on line 6479800N



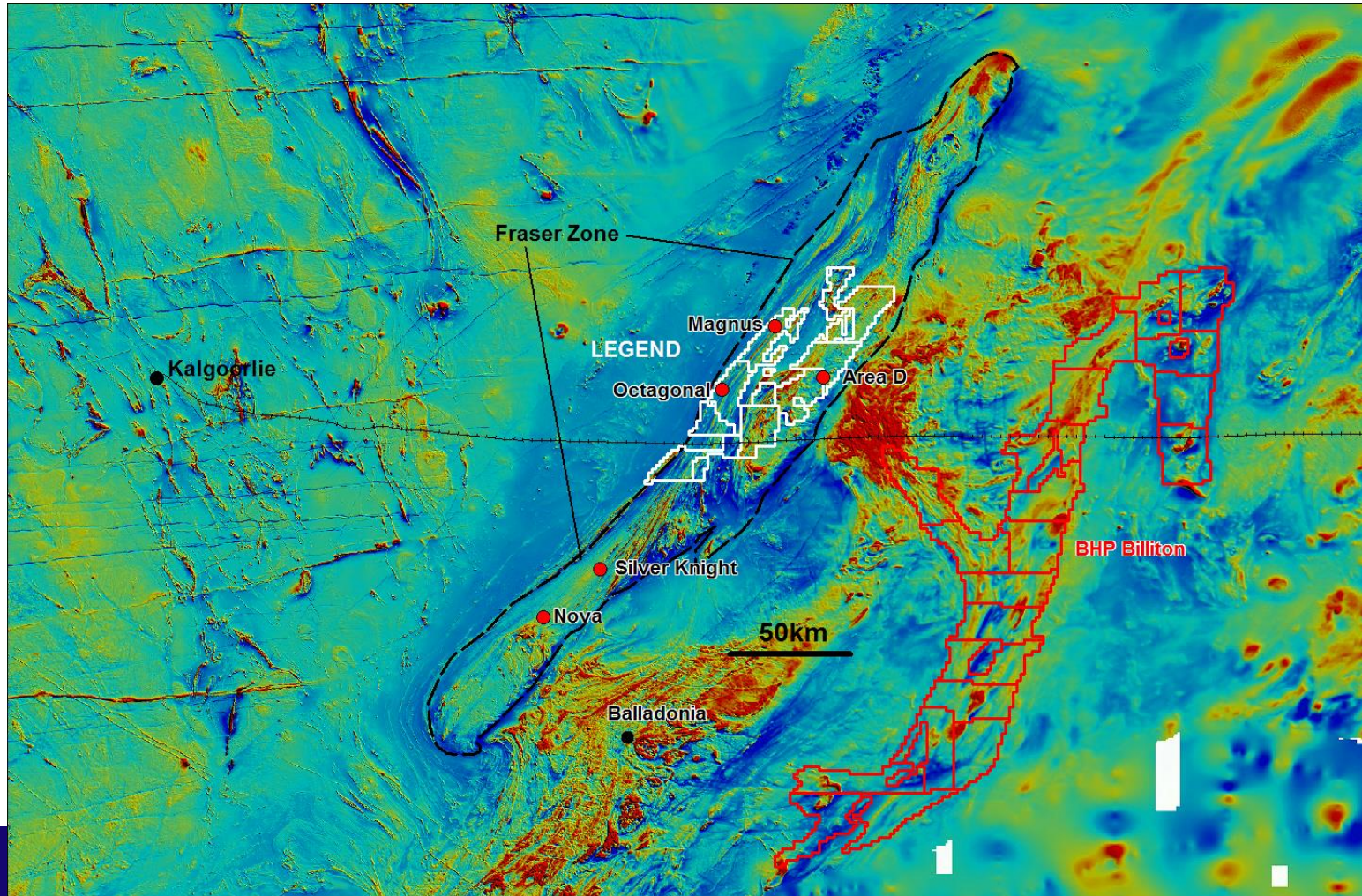
First (and only) drilling intersected a thick blanket of Ni-Cu-Co enrichment, open in all directions.

Underlying rocks are meta-gabbro/gabbro-norite with disseminated pyrrhotite-pentlandite-chalcopyrite (see microphoto on left)



“Pre-discovery Nova / Area D comparison”

LEG May 2018



BHP Nickel West Arrives! - “Seahorse Project, Madura Province – August 2019”

This is not a disclosure document. Any material used in this presentation is a summary of selected data, and any investor in Legend Mining Limited should refer to all Legend Mining Limited ASX releases and statutory reports before considering to invest in the company.

Any forward looking information in this presentation has been prepared on the basis of a number of assumptions that may prove not to be correct. Neither Legend Mining Limited, nor its officers, employees and advisors make or give any representation, warranty or guarantee in relation to this presentation.

Legend Mining Limited reserves the right to update, amend or supplement the Information in this presentation at any time in its absolute discretion without incurring any obligation to do so.

The information in this presentation that relates to exploration results is based on information compiled by Mr Derek Waterfield who is a member of the Australian Institute of Geoscientists and is a full time employee of Legend Mining Limited.

Mr Derek Waterfield has sufficient experience which is relevant to the style of mineralisation and type of deposit under consideration and to the activity which he is undertaking to qualify as a Competent Person as defined in the 2012 Edition of the “Australasian Code for Reporting of Exploration Results, Mineral Resources and Ore Reserves” (the JORC Code).

Mr Derek Waterfield consents to the inclusion in this presentation of the matters that relate to exploration results in the form and context in which it appears.