

## First Phase of Drilling at Riverina Finalised Upgraded Mineral Resource Estimation Underway

---

### HIGHLIGHTS:

- All assay results now received from Phase 1 resource definition drilling at Riverina
- Drilling programme was very successful and enhanced the potential of an open pit development at Riverina, as well as the subsequent underground mining potential
- Mineralised has been identified from shallow depths, as demonstrated by the intersection of 3.0m @ 14.9g/t from 3.0m
- Assay results demonstrate that the Riverina Deposit is consistently mineralised with a combination of narrow high-grade intercepts and broader low-grade zones, which together, are anticipated to provide an excellent mining opportunity in due course
- Multiple strong assay results include:

Other Significant highlights from latest drilling	Previously released Phase 1 highlights
---	--

- |   |   |
|---|---|
| <ul style="list-style-type: none"><li>○ 4m @ 10.8g/t from 102m</li><li>○ 2m @ 17.7g/t from 112m</li><li>○ 5m @ 4.1g/t from 97m</li><li>○ 3m @ 5.2g/t from 73m</li></ul> | <ul style="list-style-type: none"><li>○ 6m @ 13.4g/t from 65m</li><li>○ 4m @ 11.8g/t from 105m</li><li>○ 4m @ 6.2g/t from 121m</li><li>○ 5m @ 4.1g/t from 46m</li></ul> |
|---|---|

- Resource Estimation work is underway, with finalisation scheduled for November 2019
  - Ora Banda is well-funded to continue its aggressive drilling program
- 

Ora Banda Mining Limited (ASX:OBM) (“Ora Banda”, “Company”) is pleased to announce the final set of results returned from the 2019 Riverina Phase 1 RC resource definition drilling program.

Riverina Phase 1 RC drilling program that included 80 drill holes for 6,267 metres is now complete and all results have been received. The programs results have enhanced the robust nature of the gold mineralisation with a combination of narrow high-grade intercepts and broader lower-grade zones intersected across the width of the lode systems.

The Company’s geologists have commenced work on the Mineral Resource Estimation update which is scheduled for delivery in November 2019. Phase 2 drill planning remains ongoing.

### Managing Director Comment

Ora Banda Managing Director, David Quinlivan, said: *“It is pleasing to achieve this milestone and we look forward to delivering the resource upgrade in the near future. The Phase 1 drilling has provided us with a greater geological understanding of the Riverina deposit and how this might translate into open pit mining.”*

### About the Riverina Deposit

The main Riverina deposit has a current Mineral Resource of 2.6 Mt @ 2.5 g/t Au for 205,000 ounces and is one of five key priority mining targets at the Davyhurst Project. It is at an advanced stage with a high proportion of oxide tonnes defined. The current resource definition drilling has focused on the larger tonnage potential of the Footwall Lode System located in the volcanic/meta-sedimentary sequence east of the Main Lode. Two main lode surfaces dominate the footwall sequence, locally known as the Murchison and Reggie lode.

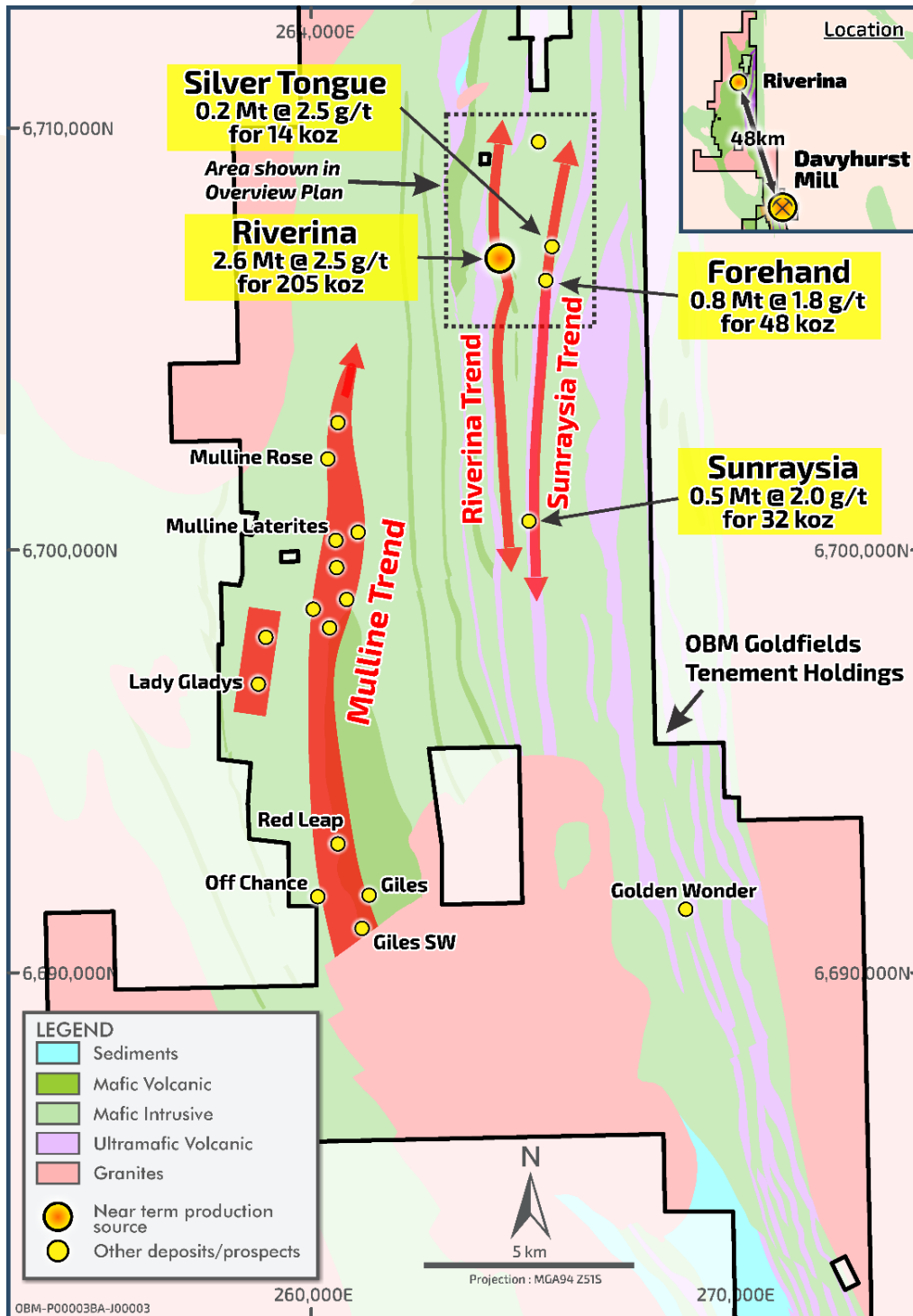


Figure 1 – Riverina Area Location Plan

The main mining area holds strike potential of over 1,000 metres and is approximately 300 metres wide. The Company will conduct further phased drilling operation in this area over the coming months. The results of these drilling campaigns will culminate in upgrade mineral resource and reserve statement. A detailed mining study will be completed at Riverina which will then be incorporated into the larger Davyhurst Project DFS.

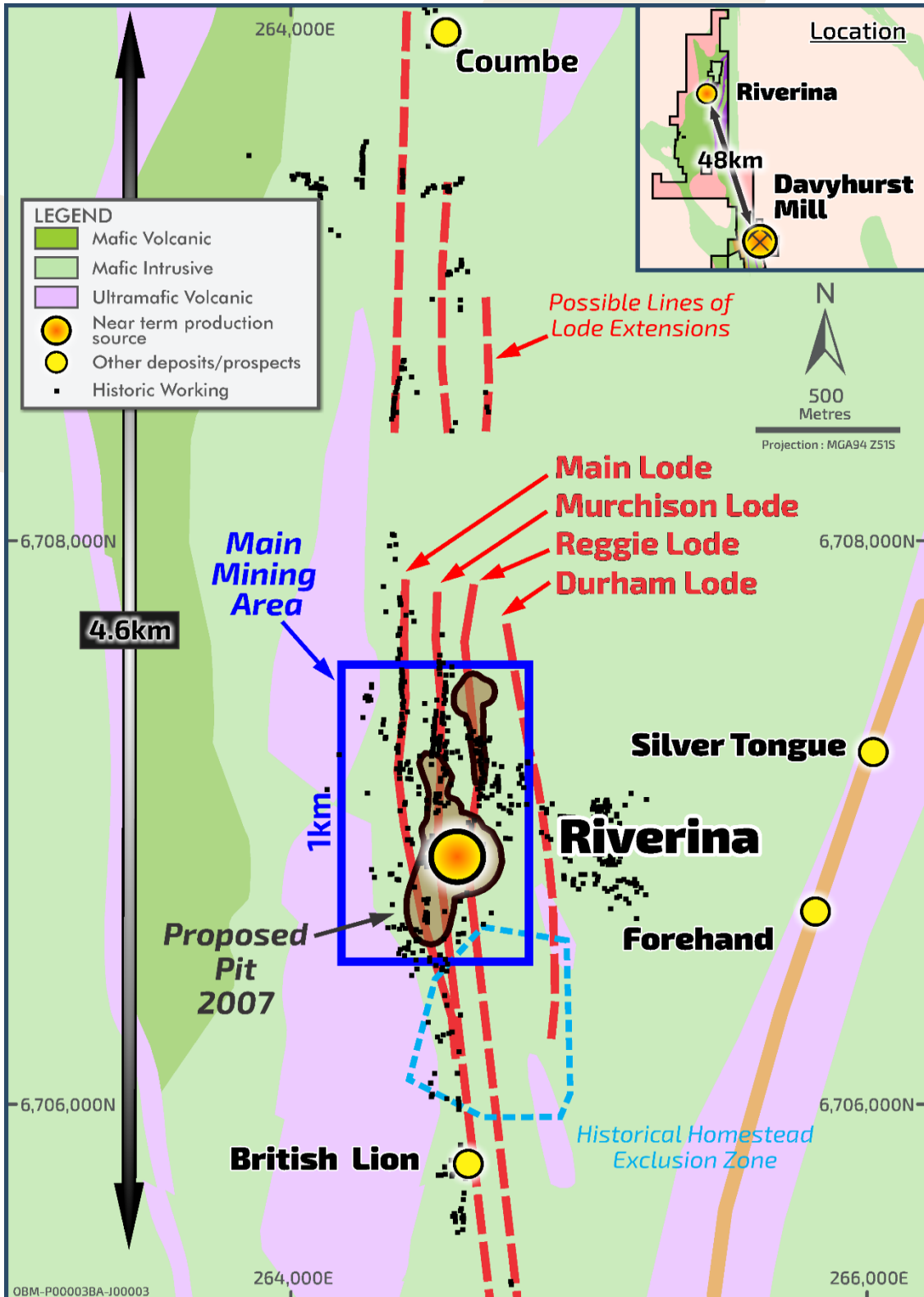


Figure 2 – Riverina overview plan showing development phases and historic workings.

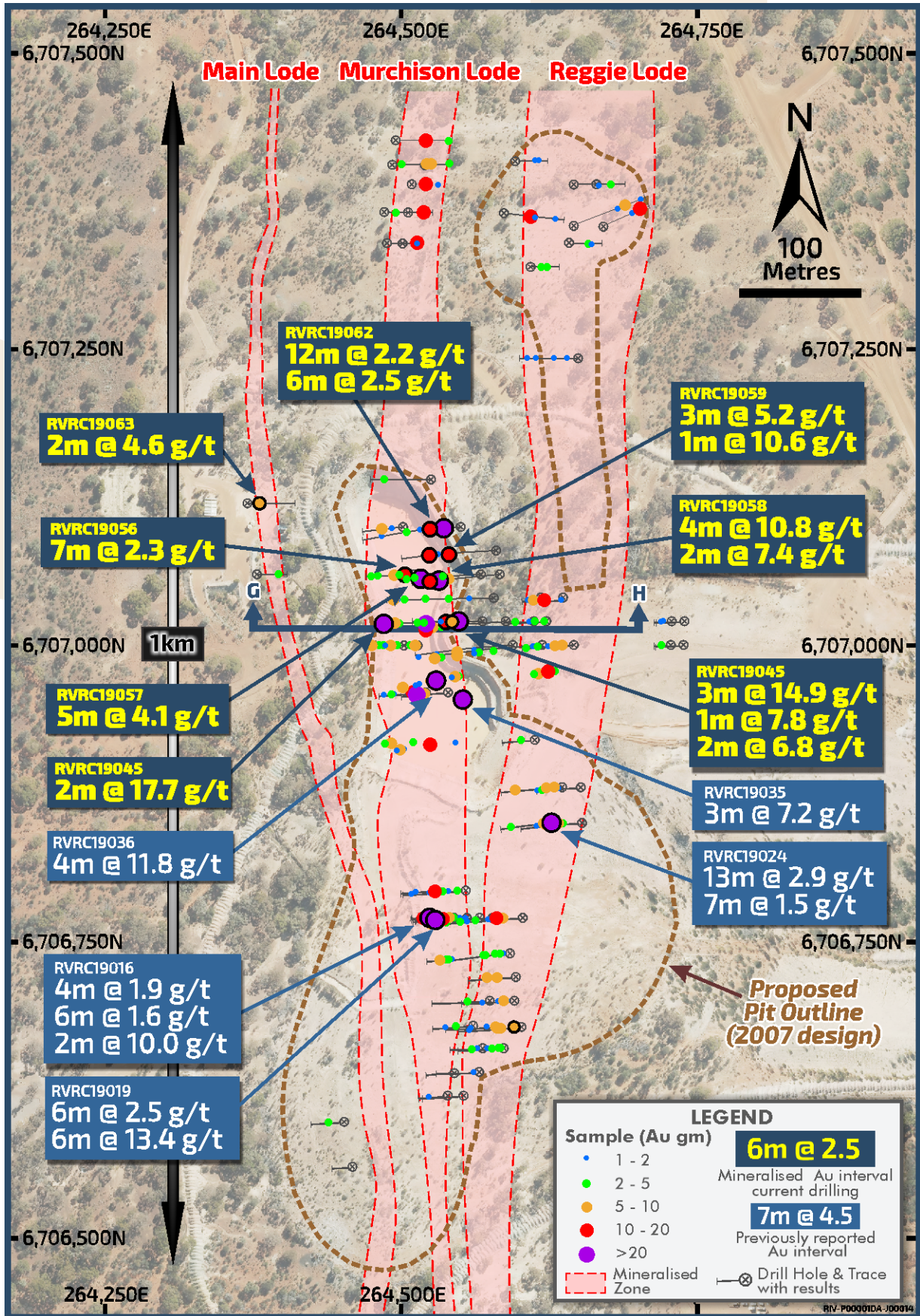


Figure 3 – Riverina drill location plan

Refer ASX announcement dated 17 April 2018, 29 July 2019, 26 August 2019, 16 September 2019 and for further drilling details refer to the Company's website; Project Overview [www.orabandamining.com.au](http://www.orabandamining.com.au)

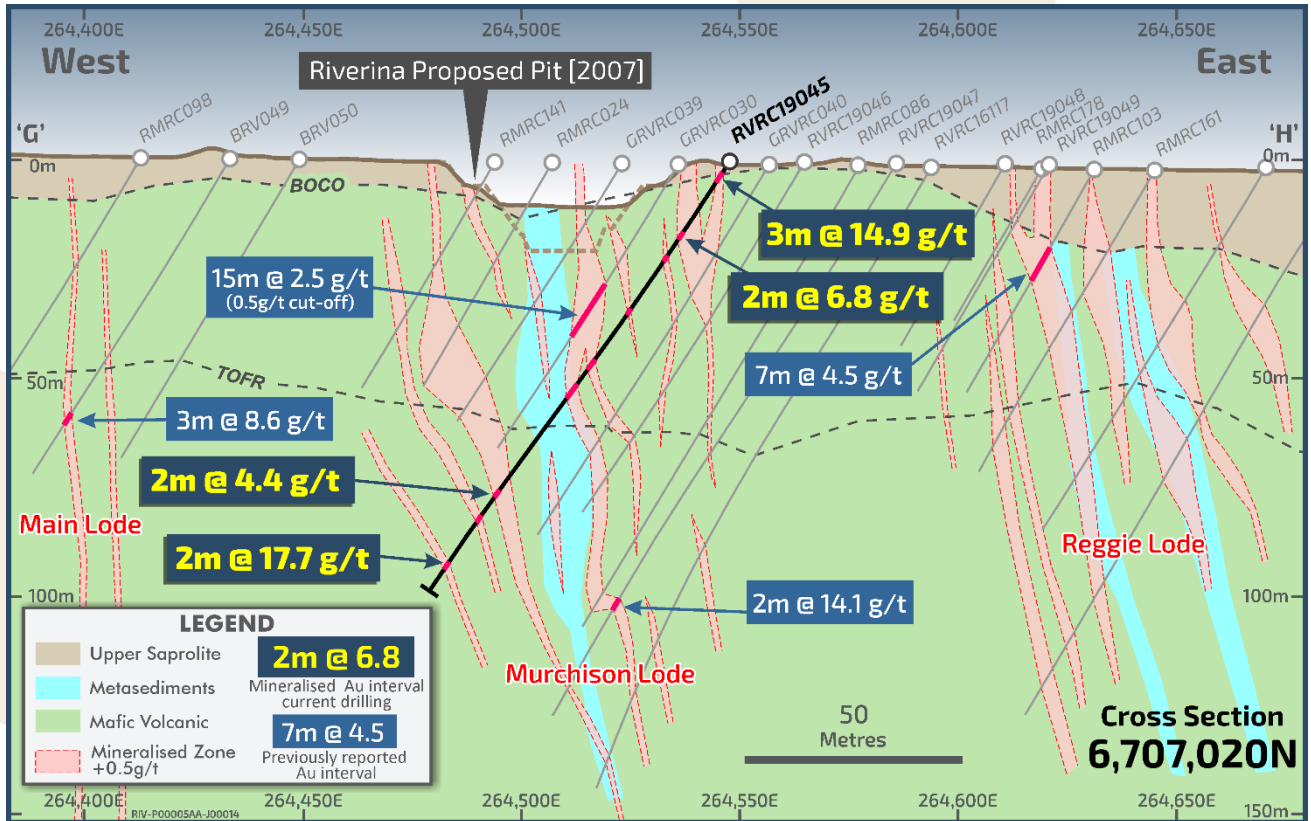


Figure 4 – Cross Section of recent drilling

Refer ASX announcement dated 17 April 2018, 29 July 2019, 26 August 2019, 16 September 2019 and for further drilling details refer to the Company's website; Project Overview [www.orabandamining.com.au](http://www.orabandamining.com.au)

**Investor & Media Queries:**

David Quinlivan  
 Managing Director  
 +61 418 948 944

## Resource Table

PROJECT	MEASURED		INDICATED		INFERRED		TOTAL MATERIAL		
	('000t)	(g/t Au)	('000t)	(g/t Au)	('000t)	(g/t Au)	('000t)	(g/t Au)	('000oz.)
GOLDEN EAGLE	-	-	345	2.5	311	2.6	656	2.5	54
LIGHTS OF ISRAEL	-	-	74	4.3	180	4.2	254	4.2	35
MAKAI SHOOT	-	-	1,985	2.0	153	1.7	2,138	2.0	136
WAIHI	-	-	805	2.4	109	2.4	914	2.4	71
<b>Central Davyhurst Subtotal</b>	-	-	<b>3,200</b>	<b>2.2</b>	<b>800</b>	<b>2.6</b>	<b>3,962</b>	<b>2.3</b>	<b>296</b>
LADY GLADYS	-	-	1,858	1.9	190	2.4	2,048	1.9	128
RIVERINA AREA	-	-	941	2.4	1,644	2.5	2,585	2.5	205
FOREHAND	-	-	386	1.7	436	1.9	822	1.8	48
SILVER TONGUE	-	-	155	2.7	19	1.3	174	2.5	14
SUNRAYSIA	-	-	175	2.1	318	2.0	493	2.0	32
<b>Riverina-Mulline Subtotal</b>	-	-	<b>3,515</b>	<b>2.1</b>	<b>2,607</b>	<b>2.3</b>	<b>6,122</b>	<b>2.2</b>	<b>427</b>
SAND KING	-	-	1,773	3.3	680	3.7	2,453	3.4	271
MISSOURI	-	-	2,022	3.0	409	2.6	2,431	2.9	227
PALMERSTON / CAMPERDOWN	-	-	118	2.3	174	2.4	292	2.4	22
BEWICK MOREING	-	-	-	-	50	2.3	50	2.3	4
BLACK RABBIT	-	-	-	-	434	3.5	434	3.5	49
THIEL WELL	-	-	-	-	18	6.0	18	6.0	3
<b>Siberia Subtotal</b>	-	-	<b>3,913</b>	<b>3.1</b>	<b>1,765</b>	<b>3.2</b>	<b>5,678</b>	<b>3.1</b>	<b>576</b>
CALLION	-	-	86	2.8	83	2.3	169	2.6	14
<b>Callion Subtotal</b>	-	-	<b>86</b>	<b>2.8</b>	<b>83</b>	<b>2.3</b>	<b>169</b>	<b>2.6</b>	<b>14</b>
FEDERAL FLAG	32	2.0	112	1.8	238	2.5	382	2.3	28
SALMON GUMS	-	-	199	2.8	108	2.9	307	2.8	28
WALHALLA	-	-	448	1.8	216	1.4	664	1.7	36
WALHALLA NORTH	-	-	94	2.4	13	3.0	107	2.5	9
MT BANJO	-	-	109	2.3	126	1.4	235	1.8	14
MACEDON	-	-	-	-	186	1.8	186	1.8	11
<b>Walhalla Subtotal</b>	<b>32</b>	<b>2.0</b>	<b>962</b>	<b>2.1</b>	<b>887</b>	<b>2.0</b>	<b>1,881</b>	<b>2.1</b>	<b>126</b>
IGUANA	-	-	690	2.1	2,032	2.0	2,722	2.0	177
LIZARD	106	4.0	75	3.7	13	2.8	194	3.8	24
<b>Lady Ida Subtotal</b>	<b>106</b>	<b>4.0</b>	<b>765</b>	<b>2.3</b>	<b>2,045</b>	<b>2.0</b>	<b>2,916</b>	<b>2.1</b>	<b>201</b>
<b>Davyhurst Total</b>	<b>138</b>	<b>3.5</b>	<b>12,441</b>	<b>2.5</b>	<b>8,187</b>	<b>2.4</b>	<b>20,728</b>	<b>2.5</b>	<b>1,640</b>
BALDOCK	-	-	136	18.6	0	0.0	136	18.6	81
METEOR	-	-	-	-	143	9.3	143	9.3	43
WHINNEN	-	-	-	-	39	13.3	39	13.3	17
<b>Mount Ida Total</b>	-	-	<b>136</b>	<b>18.6</b>	<b>182</b>	<b>10.2</b>	<b>318</b>	<b>13.8</b>	<b>141</b>
<b>Combined Total</b>	<b>138</b>	<b>3.5</b>	<b>12,577</b>	<b>2.7</b>	<b>8,369</b>	<b>2.6</b>	<b>21,046</b>	<b>2.6</b>	<b>1,780</b>

1. All Resources listed above with the exception of the Missouri and Sand King Resources were prepared and first disclosed under the JORC Code 2004 (refer to ASX release "Prospectus", 30 April 2019). It has not been updated since to comply with JORC Code 2012 on the basis that the information has not materially changed since it was last reported.
2. The Missouri and Sand King Mineral Resources has been updated and complies with all relevant aspects of the JORC code 2012, and initially released to the market on 15 December 2016 (Missouri) 3 January 2017 (Sand King).
3. The above table contains rounding errors.

## Appendix 1: Significant Intersections Table

HOLE ID	NORTHING	EASTING	RL METRES	AZI	DIP	END DEPTH	HOLE TYPE	DEPTH FROM	DEPTH TO	INTERVAL	GRADE	GRAMS METRE	Au ppm interval
RVRC19026	6,706,859	264,436	444.0	90	-53	36.0	RC						N.S.I
								17.00	19.00	2.0	4.13	8.3	2.00m @ 4.13 ppm
RVRC19038	6,707,000	264,501	430.9	272	-50	60.0	RC	23.00	24.00	1.0	1.03	1.0	1.00m @ 1.03 ppm
								36.00	40.00	4.0	2.36	9.4	4.00m @ 2.36 ppm
								0.00	2.00	2.0	2.63	5.3	2.00m @ 2.63 ppm
								6.00	7.00	1.0	3.31	3.3	1.00m @ 3.31 ppm
RVRC19039	6,707,000	264,511	430.8	272	-60	72.0	RC	29.00	30.00	1.0	3.22	3.2	1.00m @ 3.22 ppm
								51.00	54.00	3.0	1.45	4.4	3.00m @ 1.45 ppm
								58.00	60.00	2.0	1.20	2.4	2.00m @ 1.20 ppm
								<b>3.00</b>	<b>6.00</b>	<b>3.0</b>	<b>14.95</b>	<b>44.8</b>	<b>3.00m @ 14.95 ppm</b>
								14.00	15.00	1.0	7.79	7.8	1.00m @ 7.79 ppm
								<b>20.00</b>	<b>22.00</b>	<b>2.0</b>	<b>6.77</b>	<b>13.5</b>	<b>2.00m @ 6.77 ppm</b>
								26.00	27.00	1.0	1.74	1.7	1.00m @ 1.74 ppm
								55.00	56.00	1.0	3.04	3.0	1.00m @ 3.04 ppm
RVRC19045	6,707,020	264,548	440.5	271	-57	120.0	RC	62.00	66.00	4.0	1.09	4.4	4.00m @ 1.09 ppm
								88.00	89.00	1.0	2.01	2.0	1.00m @ 2.01 ppm
								92.00	94.00	2.0	4.41	8.8	2.00m @ 4.41 ppm
								99.00	101.00	2.0	2.92	5.8	2.00m @ 2.92 ppm
								107.00	108.00	1.0	1.47	1.5	1.00m @ 1.47 ppm
								<b>112.00</b>	<b>114.00</b>	<b>2.0</b>	<b>17.66</b>	<b>35.3</b>	<b>2.00m @ 17.66 ppm</b>
								33.00	34.00	1.0	1.19	1.2	1.00m @ 1.19 ppm
								61.00	63.00	2.0	2.36	4.7	2.00m @ 2.36 ppm
								95.00	96.00	1.0	3.31	3.3	1.00m @ 3.31 ppm
								124.00	126.00	2.0	2.49	5.0	2.00m @ 2.49 ppm
								135.00	136.00	1.0	1.12	1.1	1.00m @ 1.12 ppm
								140.00	141.00	1.0	5.43	5.4	1.00m @ 5.43 ppm
RVRC19054	6,707,039	264,576	440.2	270	-50	150.0	RC	28.00	30.00	2.0	2.43	4.9	2.00m @ 2.43 ppm
								<b>6.00</b>	<b>13.00</b>	<b>7.0</b>	<b>2.30</b>	<b>16.1</b>	<b>7.00m @ 2.30 ppm</b>
								16.00	17.00	1.0	2.17	2.2	1.00m @ 2.17 ppm
								21.00	25.00	4.0	1.89	7.6	4.00m @ 1.89 ppm
								43.00	46.00	3.0	1.16	3.5	3.00m @ 1.16 ppm
								52.00	53.00	1.0	3.25	3.2	1.00m @ 3.25 ppm
								53.00	55.00	2.0	1.65	3.3	2.00m @ 1.65 ppm
								61.00	62.00	1.0	3.28	3.3	1.00m @ 3.28 ppm
								78.00	79.00	1.0	1.74	1.7	1.00m @ 1.74 ppm
								92.00	93.00	1.0	3.99	4.0	1.00m @ 3.99 ppm
								<b>97.00</b>	<b>102.00</b>	<b>5.0</b>	<b>4.11</b>	<b>20.6</b>	<b>5.00m @ 4.11 ppm</b>
								105.00	108.00	3.0	1.14	3.4	3.00m @ 1.14 ppm
								117.00	119.00	2.0	1.96	3.9	2.00m @ 1.96 ppm
								82.00	84.00	2.0	3.59	7.2	2.00m @ 3.59 ppm
								<b>102.00</b>	<b>106.00</b>	<b>4.0</b>	<b>10.80</b>	<b>43.2</b>	<b>4.00m @ 10.80 ppm</b>
								114.00	116.00	2.0	7.42	14.8	2.00m @ 7.42 ppm
								128.00	129.00	1.0	2.53	2.5	1.00m @ 2.53 ppm
								141.00	142.00	1.0	1.89	1.9	1.00m @ 1.89 ppm
								<b>73.00</b>	<b>76.00</b>	<b>3.0</b>	<b>5.24</b>	<b>15.7</b>	<b>3.00m @ 5.24 ppm</b>
RVRC19055	6,707,060	264,376	445.2	90	-50	42.0	RC	90.00	91.00	1.0	1.97	2.0	1.00m @ 1.97 ppm
								<b>104.00</b>	<b>105.00</b>	<b>1.0</b>	<b>10.64</b>	<b>10.6</b>	<b>1.00m @ 10.64 ppm</b>
								13.00	14.00	1.0	1.05	1.0	1.00m @ 1.05 ppm
								20.00	27.00	7.0	1.34	9.4	7.00m @ 1.34 ppm
								<b>23.00</b>	<b>35.00</b>	<b>12.0</b>	<b>2.16</b>	<b>26.0</b>	<b>12.00m @ 2.16 ppm</b>
								<b>38.00</b>	<b>44.00</b>	<b>6.0</b>	<b>2.50</b>	<b>15.0</b>	<b>6.00m @ 2.50 ppm</b>
								53.00	54.00	1.0	1.58	1.6	1.00m @ 1.58 ppm
								72.00	73.00	1.0	3.18	3.2	1.00m @ 3.18 ppm
								107.00	108.00	1.0	1.78	1.8	1.00m @ 1.78 ppm
RVRC19056	6,707,060	264,508	430.9	270	-51	60.0	RC	10.00	12.00	2.0	4.61	9.2	2.00m @ 4.61 ppm
RVRC19057	6,707,059	264,566	440.6	270	-60	132.0	RC	62.00	65.00	3.0	1.16	3.5	3.00m @ 1.16 ppm
								15.00	16.00	1.0	1.48	1.5	1.00m @ 1.48 ppm
								36.00	37.00	1.0	1.04	1.0	1.00m @ 1.04 ppm
								65.00	66.00	1.0	1.47	1.5	1.00m @ 1.47 ppm
								77.00	78.00	1.0	1.70	1.7	1.00m @ 1.70 ppm
RVRC19058	6,707,059	264,581	440.2	270	-60	151.0	RC						
RVRC19059	6,707,080	264,580	440.0	270	-58	150.0	RC						
RVRC19061	6,707,098	264,500	431.1	270	-52	54.0	RC						
RVRC19062	6,707,100	264,549	444.8	270	-52	138.0	RC						
RVRC19063	6,707,119	264,371	445.6	90	-50	60.0	RC						
RVRC19064	6,707,138	264,525	447.8	272	-50	84.0	RC						
RVRC19065	6,707,243	264,647	443.0	270	-60	90.0	RC						

## Competent Persons Statement

The information in this Announcement that relates to Exploration Results, and the Sand King, Missouri Mineral Resources is based on information compiled under the supervision of Mr Andrew Czerw, an employee of Ora Banda Mining Limited, who is Member of the Australian Institute of Mining and Metallurgy. Mr Czerw has sufficient experience which is relevant to the style of mineralisation and type of deposit under consideration and to the activity which he is undertaking to qualify as a Competent Person as defined in the 2012 Edition of the 'Australasian Code for Reporting of Exploration Results, Mineral Resources and Ore Reserves'. Mr Czerw consents to the inclusion in the report of the matters based on his information in the form and context in which it appears.

The information in this Announcement that relates to Mineral Resources is based on information compiled under the supervision of Mr Andrew Czerw, an employee of Ora Banda Mining Limited, who is Member of the Australian Institute of Mining and Metallurgy. Mr Czerw has sufficient experience which is relevant to the style of mineralisation and type of deposit under consideration and to the activity which he is undertaking to qualify as a Competent Person as defined in the 2004 and 2012 Edition of the 'Australasian Code for Reporting of Exploration Results, Mineral Resources and Ore Reserves'. The Company confirms that it is not aware of any new information or data that materially affects the information included in the original market announcements dated 15 December 2016 & 3 January 2017 and to ASX release "Prospectus" on 30 April 2019. The Company confirms that the form and context in which the Competent Person's findings are presented have not been modified from the original announcement and, in the case of estimates of Mineral Resources, all material assumptions and technical parameters underpinning the estimates in the initial announcement continue to apply and have not materially changed. This information was prepared and first disclosed under the JORC Code 2004. It has not been updated since to comply with the JORC Code 2012 on the basis that the information has not materially changed since it was last reported.

Unless otherwise stated, all Mineral Resources and Ore Reserves (with the exception of Missouri and Sand King) are reported in accordance with JORC 2004. The relevant information has not been updated since to comply with the JORC Code 2012 on the basis that the information has not materially changed since it was last reported.

### Forward-looking Statements

This Announcement contains forward-looking statements which may be identified by words such as "believes", "estimates", "expects", "intends", "may", "will", "would", "could", or "should" and other similar words that involve risks and uncertainties. These statements are based on an assessment of present economic and operating conditions, and on a number of assumptions regarding future events and actions that, as at the date of this Announcement, are expected to take place.

Such forward-looking statements are not guarantees of future performance and involve known and unknown risks, uncertainties, assumptions and other important factors, many of which are beyond the control of the Company, the Directors and management of the Company. These and other factors could cause actual results to differ materially from those expressed in any forward-looking statements.

The Company has no intention to update or revise forward-looking statements, or to publish prospective financial information in the future, regardless of whether new information, future events or any other factors affect the information contained in this Announcement, except where required by law.

The Company cannot and does not give assurances that the results, performance or achievements expressed or implied in the forward-looking statements contained in this Announcement will actually occur and investors are cautioned not to place undue reliance on these forward-looking statements.



## JORC CODE, 2012 EDITION – TABLE 1 REPORT TEMPLATE

### Section 1 Sampling Techniques and Data

Information for historical (Pre Ora Banda Mining Limited from 1996 and 2001) drilling and sampling has been extensively viewed and validated where possible. Information pertaining to historical QAQC procedures and data is incomplete but of a sufficient quality and detail to allow drilling and assay data to be used for resource estimations. Further Ora Banda Mining Limited has undertaken extensive infill and confirmation drilling which confirm historical drill results. Sections 1 and 2 describe the work undertaken by Ora Banda Mining Limited and only refer to historical information where appropriate and/or available.

Criteria	JORC Code explanation	Commentary
<b>Sampling techniques</b>	<ul style="list-style-type: none"> <li><i>Nature and quality of sampling (eg cut channels, random chips, or specific specialised industry standard measurement tools appropriate to the minerals under investigation, such as down hole gamma sondes, or handheld XRF instruments, etc). These examples should not be taken as limiting the broad meaning of sampling.</i></li> <li><i>Include reference to measures taken to ensure sample representivity and the appropriate calibration of any measurement tools or systems used.</i></li> <li><i>Aspects of the determination of mineralisation that are Material to the Public Report.</i></li> <li><i>In cases where 'industry standard' work has been done this would be relatively simple (eg 'reverse circulation drilling was used to obtain 1 m samples from which 3 kg was pulverised to produce a 30 g charge for fire assay'). In other cases more explanation may be required, such as where there is coarse gold that has inherent sampling problems. Unusual commodities or mineralisation types (eg submarine nodules) may warrant disclosure of detailed information.</i></li> </ul>	<ul style="list-style-type: none"> <li>Croesus Mining N.L.; All samples were dried, crushed and split to obtain a sample less than 3.5kg, and finely pulverised prior to a 50gm charge being collected for analysis by fire assay.</li> <li>Monarch Gold Mining Company Ltd; Industry standard work. RC samples collected and sent to certified laboratories for crushing, pulverising and assay by fire assay (RC) and aqua regia (RAB).</li> <li>Pancontinental Mining Ltd; Samples (&gt;2kg) were crushed to 1mm, 1kg split taken and pulverised to 90% minus 20 mesh from which a 50gm aliquot was taken for assay by aqua regia or fire assay.</li> <li>Consolidated Gold N.L./DPPL(Davyhurst Project PTY. LTD.); Industry standard work, RAB samples crushed, pulverised and a 50g charge taken for fire assay. 200gm soil samples oven dried, and pulverised, 50g charge taken for aqua regia assay.</li> <li>Riverina Resources Pty Ltd; Industry standard work. RAB samples taken every metre, composited to 4m using a spear. Samples crushed, pulverised and 50g charge taken for fire assay. RC four metre composite samples were collected using a sample spear. RC and diamond samples crushed, pulverised and 50g charge taken for fire assay and/or 4 acid digest. Any gold anomalous 4m composite samples were re-sampled over 1m intervals using a riffle splitter and also sent to Kalgoorlie Assay Laboratory for gold analysis by 50g fire assay.</li> <li>Barra Resources Ltd; Industry standard work. The entirety of each hole was sampled. Each RC and RAB hole was initially sampled by 4m composites using a spear or scoop. To obtain a representative sample, the entire 1m sample was split using a riffle splitter into a calico bag. Whole diamond core samples for ore zones were sampled. Entire samples were pulverised before splitting and a 50g charge taken for fire assay.</li> <li>Carpentaria Exploration Company Pty Ltd; Samples were collected over 1m intervals. 1m, 2m and 4m composite samples taken depending on the rock type. Composite samples were collected using a sample spear. About 2kg samples were despatched for analysis. Samples crushed, pulverised and a 50g charge taken for fire assay.</li> <li>Malanti Pty Ltd; Industry standard work. 1m samples were collected via a cyclone and passed through a triple splitter giving a 12.5% split of about 2kg. A trowel was used to scoop the samples for composites over 4m and 6m intervals. Samples for assay were then taken with composite intervals based on geology. Many of the single splits were selected for assay in the first instance. Samples packed in poly weave bags were freighted for analysis. Sample crushed, pulverised and a 50g charge taken for fire assay.</li> <li>Riverina Gold Mines NL; Industry standard work, Composited RAB and 1m RC samples assayed by laboratory. Samples crushed, pulverised and a 50g charge taken for aqua regia analysis.</li> <li>Riverina Gold NL; RAB samples were bulked at 2m intervals. RC holes were sampled at 1m intervals. Diamond core samples were taken at geological boundaries, sample method unknown. All samples crushed, pulverised and a charge taken for fire assay (Au) and perchloric acid digest/AAS for other elements.</li> <li>Ora Banda Mining Limited (OBM) - 1m RC samples using face sampling hammer with samples collected under cone splitter. 1m composite samples were dispatched for pulverising and 50g charge Fire Assay. Half core samples, cut by saw. Core sample intervals</li> </ul>

Criteria	JORC Code explanation	Commentary
		selected by geologist and defined by geological boundaries. Samples are crushed, pulverized and a 40g charge is analysed by Fire Assay
<b>Drilling techniques</b>	<ul style="list-style-type: none"> <li>Drill type (eg core, reverse circulation, open-hole hammer, rotary air blast, auger, Bangka, sonic, etc) and details (eg core diameter, triple or standard tube, depth of diamond tails, face-sampling bit or other type, whether core is oriented and if so, by what method, etc).</li> </ul>	<ul style="list-style-type: none"> <li>Croesus Mining N.L; Auger samples were drilled by Prodrill Pty Ltd using Toyota mounted auger rig. RAB holes were drilled by either Kennedy, or Arronika or Challenge Drilling of Kalgoorlie. Challenge drilling employed a custom built RAB/AC rig. RC holes were drilled by Ausdrill Pty Ltd and diamond holes were drilled by Sandersons. Core was oriented.</li> <li>Monarch Gold Mining Company Ltd; Aircore and RAB holes were drilled by Challenge Drilling. All RC holes were drilled by Kennedy Drilling Contractors with 5<sup>1/2</sup>" hammer.</li> <li>Pancontinental Mining Ltd; Drilling was undertaken by Davies Drilling of Kalgoorlie using a Schramm T64 rig.</li> <li>Consolidated Gold N.L/DPPL; Auger samples were collected using a power auger fitted to a 4WD vehicle. RAB drilling was undertaken by Bostech Drilling Pty Ltd.</li> <li>Riverina Resources Pty Ltd; RC holes drilled with 5<sup>3/4</sup>" hammer. Unknown diamond core diameter.</li> <li>Barra Resources Ltd; Holes were drilled by Resource Drilling Pty Ltd using a Schramm 450 drill rig.</li> <li>Carpentaria Exploration Company Pty Ltd; RC drilling by Robinson contractors. Face sampling hammer used.</li> <li>Malanti Pty Ltd; Holes were drilled by Redmond Drilling of Kalgoorlie using a truck mounted Schramm rig with a compressor rated at 900 cfm 350 psi.</li> <li>Riverina Gold Mines NL; Vacuum holes were drilled by G &amp; B Drilling using a Toyota Landcruiser mounted Edsom vacuum rig fitted with a 2 inch (5.08cm) diameter blade. RAB holes were drilled by PJ and RM Kennedy using a Hydro RAB 50 drill rig mounted on a 4 wheel Hino truck with 600 cfm/200 PSI air capacity. A 51/4 inch hammer and blade were used. RC holes were drilled by either Civil Resources Ltd using an Ingersoll Rand T4W heavy duty percussion rig fitted with a 900 cfm at 350 PSI air compressor and a 51/4 inch (13,34cm diameter) RC hollow hammer or by Swick Drilling using an Ingersoll Rand TH 60 reverse circulation drill rig with 750 cfm/350 PSI air capacity and a 51/4 inch RC hollow hammer or by B. Stockwell of Murray Black's Spec Mining Services using a rig mounted on an 8 x 4 Mercedes.</li> <li>Riverina Gold NL; RC hole were drilled by Green Drilling using Schramm T66 rig. Diamond holes were drilled by Longyear. Diamond holes were sometimes drilled with a RC pre-collar, HQ core and a NQ2 core drilled.</li> <li>OBM - 5 inch diameter RC holes using face sampling hammer with samples collected under cone splitter. HQ3 coring to approx. 40m, then NQ2 to BOH. All core oriented by reflex instrument.</li> </ul>
<b>Drill sample recovery</b>	<ul style="list-style-type: none"> <li>Method of recording and assessing core and chip sample recoveries and results assessed.</li> <li>Measures taken to maximise sample recovery and ensure representative nature of the samples.</li> <li>Whether a relationship exists between sample recovery and grade and whether sample bias may have occurred due to preferential loss/gain of fine/coarse material.</li> </ul>	<ul style="list-style-type: none"> <li>Auger, RAB and RC drill recoveries were not recoded by Croesus Mining N.L, Monarch Gold Mining Company Ltd, Pancontinental Mining Ltd, Consolidated Gold N.L/DPPL, Riverina Resources Pty Ltd, Barra Resources Ltd, Carpentaria Exploration Company Pty Ltd, Malanti Pty Ltd, Riverina Gold Mines NL or Riverina Gold Mines NL. However Monarch, in a Riverina resource report state that "Good recoveries for RMRC series RC drilling were observed. Minor water was encountered in 27 of the RMRC series drill holes"</li> <li>Diamond Core recoveries are very high due to the competent ground. Any core recovery issues are noted on core blocks and logged.</li> <li>OBM - Diamond drill recoveries are recorded as a percentage calculated from measured core against downhole drilled intervals (core blocks).</li> <li>There is no known relationship between sample recovery and grade.</li> </ul>
<b>Logging</b>	<ul style="list-style-type: none"> <li>Whether core and chip samples have been geologically and geotechnically logged to a level of detail to support appropriate Mineral Resource estimation, mining studies and metallurgical studies.</li> <li>Whether logging is qualitative or quantitative in nature. Core (or costean, channel, etc) photography.</li> <li>The total length and percentage of the relevant intersections logged.</li> </ul>	<ul style="list-style-type: none"> <li>Croesus Mining N.L; RAB drill logs were recorded both on paper and later electronically by a Casiopia datalogger. Diamond core was geologically, geotechnically and magnetic susceptibility logged. Qualitative: alteration, colour, contact, grainsize, joint, matrix, texture, rocktype, mineral, structure, sulphide, percent sulphide, vein type, percent vein, weathering. Quantitative; percent sulphide, percent vein. Diamond core was photographed.</li> <li>Monarch Gold Mining Company Ltd; Qualitative: lithology, mineralisation code, alteration, vein code, sulphide code. Quantitative; percent mineralisation, alteration intensity, percent vein, percent sulphide.</li> <li>Pancontinental Mining Ltd; All drill data was recorded on computer forms and the lithological descriptions were produced by Control Data' Bordata program. Qualitative: colour, weathering, minerals, grainsize, rock, structure, alteration. Quantitative: alteration intensity.</li> <li>Consolidated Gold N.L/DPPL; Holes were logged at 1m intervals using a standard logging sheet directly onto a palmtop logger. Qualitative: colour, weathering, minerals, grainsize, rock, structure, alteration. Quantitative: alteration intensity.</li> </ul>

Criteria	JORC Code explanation	Commentary
		<ul style="list-style-type: none"> <li>• Riverina Resources Pty Ltd; Qualitative: lithology, minerals, oxidation, colour, grain, texture, texture intensity, alteration, sulphide, comments. Quantitative: alteration intensity, percent sulphide, percent quartz veins.</li> <li>• Barra Resources Ltd; Each meter from all RC drill holes was washed, sieved and collected in chip trays and stored at the Barmingo First Hit Mine office. These rock chips were geologically logged using the Barmingo Pty Ltd geological logging codes. This data was manually recorded on logging sheets or captured digitally using a HP Jornada hand held computer utilising the Micromine Field Marshall program and entered into a digital database at the Barmingo First Hit Mine office. Each diamond drill holes was recovered according to the driller's core blocks and metre marked. The core was logged to the centimetre, and samples were marked up accordingly. The core was geologically logged using the Barmingo Pty Ltd geological logging codes. This data was manually recorded on logging sheets in the field and entered into a digital database at the Barmingo First Hit Mine office. Qualitative: qualifier, lithology, mineralisation, alteration, grain size, texture, colour, oxidation. Quantitative; percentage of quartz and sulphide. Core was photographed.</li> <li>• Carpentaria Exploration Company Pty Ltd; Qualitative: description. Quantitative; percent oxidation, percent quartz, percent pyrite.</li> <li>• Malanti Pty Ltd; Qualitative: description. Quantitative; percent quartz. Logged on a metre basis.</li> <li>• Riverina Gold Mines NL; Qualitative for Vacuum holes: colour, grain size, alteration minerals, rock type, structure, vein type, sulphides, oxidation and comments. Quantitative for Vacuum holes; percent veins, percent sulphides. Qualitative for RAB holes and RC holes from RV110 to RV295: colour, grain size, alteration minerals, rock type, fabric, vein type, sulphides, oxidation and comments. Quantitative RAB holes and RC holes from RV110 to RV295; percent veins, percent sulphides. Qualitative for RC holes from RV296 to RV350: geology, oxidation, colour and description. Quantitative for RC holes from RV296 to RV350; percent quartz.</li> <li>• Riverina Gold NL; Qualitative: RQD, lithology, mineralisation, alteration, weathering, veining, fracturing. Quantitative: percent quartz.</li> <li>• OBM - Qualitative: Lithology, colour, oxidation, grainsize, texture, structure, hardness, regolith. Quantitative: estimates are made of quartz veining, sulphide and alteration percentages. Core photographed.</li> <li>• All holes were geologically logged in their entirety to a level of detail to support mineral resource estimation.</li> </ul>
<b>Sub-sampling techniques and sample preparation</b>	<ul style="list-style-type: none"> <li>• <i>If core, whether cut or sawn and whether quarter, half or all core taken.</i></li> <li>• <i>If non-core, whether riffled, tube sampled, rotary split, etc and whether sampled wet or dry.</i></li> <li>• <i>For all sample types, the nature, quality and appropriateness of the sample preparation technique.</i></li> <li>• <i>Quality control procedures adopted for all sub-sampling stages to maximise representivity of samples.</i></li> <li>• <i>Measures taken to ensure that the sampling is representative of the in situ material collected, including for instance results for field duplicate/second-half sampling.</i></li> <li>• <i>Whether sample sizes are appropriate to the grain size of the material being sampled.</i></li> </ul>	<ul style="list-style-type: none"> <li>• Croesus Mining N.L; Auger samples were taken from an average depth of 1.5m to 2m. RAB and Aircore samples were collected in buckets below a free standing cyclone and laid out at 1m intervals in rows of tens adjacent to the drill collar. Composite analytical samples (~3.5kg) were initially collected over 5m intervals for each hole and a 1m bottom of hole analytical sample. Analytical composite samples were formed by taking a representative scoop through each 1m drill sample. RC drill samples were collected in large plastic retention bags below a freestanding cyclone at 1m intervals, with analytical samples initially formed by composite sampling over 5m intervals. Where samples were dry, analytical composites were formed by spear sampling, using a 50mm diameter plastic pipe pushed through the drill cuttings in the sample retention bag to the base of the bag. The pipe is removed carefully with the contents of the pipe containing a representation of the retained metre. Wet RC drill samples were thoroughly mixed in the sample retention bag and 'scoop' sampled to form a 5m composite sample. HQ diamond core was cut into halves and sampled on geological boundaries, to a minimum of 20cm samples or on a metre basis on site. The diamond core was cut using a diamond saw, with half core being submitted to the laboratory for analysis and the other stored. Field samples were taken for RAB, RC and diamond core samples at a rate of 1 in 20. Composite analytical samples returning values greater than 0.1 g/t Au were re-sampled at 1m intervals.</li> <li>• Monarch Gold Mining Company Ltd; Drill hole samples were collected at 4m and 3m composite intervals. All samples at ALS Kalgoorlie were sorted, dried, split via a riffle splitter using the standard splitting procedure laboratory Method Code SPL-21, pulverised in a ring mill using a standard low chrome steel ring set to &gt;85% passing 75 micron. If sample was &gt;3 kg it was split prior to pulverising and the remainder retained or discarded. A 250g representative split sample was taken, the remaining residue sample stored and a 50gm sample charge was taken for analysis. All samples at Ultra Trace Pty Ltd were sorted, dried, a 2.5 – 3kg sample was pulverized using a vibrating disc, was split into a 200-300g subsample and the residue sample stored. A 40grm charge was taken for analysis. Composite samples returning anomalous values were sampled at 1m intervals using a scoop. For both RC and RAB drilling a duplicate sample was collected at every 25th sample, and a standard sample was submitted every 20th sample.</li> <li>• Pancontinental Mining Ltd; RC samples were collected in plastic bags directly from the cyclone at 1m intervals, split twice through a sample splitter before splitting off a 2kg sample for analysis. Samples were crushed to 1mm, 1kg split taken and pulverised to 90% minus 20 mesh from which a 50gm aliquot was taken. Field samples were taken at a rate of 1 in 10 and results show a good correlation</li> </ul>

Criteria	JORC Code explanation	Commentary
		<p>with the original values. Samples sent to SGS were dried, jaw and roll crushed, split and pulverised in a chromium steel mill.</p> <ul style="list-style-type: none"> <li>• Consolidated Gold N.L./DPPL; Auger samples were collected at a nominal depth of 1.5m or blade refusal. Approximately 200gm of material was placed into pre-numbered paper geochemical bags. Sample numbers were entered into a datalogger linked to the GPS unit to ensure accuracy. RAB samples were collected at 1m intervals and used to create a 4m composite sample. Samples were oven dried, pulverised in a single stage grinding bowl until about 90% of the material passed 75 micron. A 50gm split sample was taken for analysis. Composite samples returning values greater than 0.19 Au g/t were sampled at 1m intervals.</li> <li>• Riverina Resources Pty Ltd; Auger soil samples were collected from a depth of 1.8m or blade refusal. RAB and RC 4m composites were taken using a sample spear. Samples were dried, crushed, split, pulverised and a 50gm charge taken. Composite samples returning anomalous gold values were sampled at 1m intervals using a sample spear.</li> <li>• Barra Resources Ltd; Every metre of the drilling was collected through a cyclone into a large green plastic bag and lined up in rows near the hole in rows of 20. The entirety of each hole was sampled. Each hole was initially sampled by 4m composites using a spear or scoop. Once each hole was logged, intervals considered to be geologically significant were re-sampled at 1m intervals. To obtain a representative sample, the entire 1m sample was split using a riffle splitter into a calico bag. Whole diamond core samples for ore zones were sampled. Samples greater than 2.5kg were riffle split to &lt;2.5kg using a Jones riffle splitter. The entire sample was then pulverised in a Labtechnics LM5 to better than 85% passing 75 microns. A 50gm pulp was taken for assaying in appropriately numbered satchels. Composite samples that returned gold assays greater than 0.1 g/t Au and that had not been previously sampled at 1m intervals, were re-sampled at 1m intervals. In addition, any highly anomalous 1m samples were also sampled again to confirm their assay results.</li> <li>• Carpentaria Exploration Company Pty Ltd; Samples were collected over 1m intervals. 2m and 4m composite samples were collected using a sample spear. About 2kg samples were despatched for analysis. Samples were dried, crushed, split, pulverised and a charge taken for analysis.</li> <li>• Malanti Pty Ltd; 1m samples were collected in plastic bags via a cyclone and passed through a triple splitter giving a 12.5% split of about 2kg which was placed in a calico bag and marked with the drill hole number and interval sampled. The 87.5% was returned to the similarly numbered large plastic bag and laid in rows on site. A trowel was used to scoop the samples for composites over 4m and 6m intervals. Samples for assay were then taken with composite intervals based on geology. Many of the single splits were selected for assay in the first instance. Samples packed in poly weave bags were freighted for analysis. Samples were dried, crushed, split, pulverised and a 50gm charge taken. RC Samples with anomalous composite assays were split and submitted for analysis.</li> <li>• Riverina Gold Mines NL; Vacuum hole samples were collected every metre and split. RAB samples were taken every metre through a cyclone and riffle split to a quarter and composited to 4m intervals. RC samples were taken every metre through a cyclone after being riffle split to a quarter and some composited to 4m. The residue remained on site in plastic bags whilst the quarter split was sent for analysis. For vacuum holes RVV70 to RVV125, a 30gm was taken. RC samples from holes RV110 to RV164 and vacuum hole samples were dried, crushed to nominal 3mm and a 1,000 grm split was taken for pulverising until 90% passed minus 75 microns. A 25grm charge was taken. RC samples from holes RV230 to RV350 were totally pulverised and a 50 grm charge taken. 4m RAB composite samples returning anomalous values greater than 0.1 g/t Au were sampled at 1m intervals.</li> <li>• Riverina Gold NL; RAB samples were bulked at 2m intervals. RC holes were sampled at 1m intervals. Diamond core samples were taken at geological boundaries. Samples were crushed, split, pulverised and a charge taken for analysis.</li> <li>• OBM - Samples were submitted as individual samples taken onsite from cone splitter. Half core samples, cut by saw. Core sample intervals selected by geologist and defined by geological boundaries. RC samples were dried, crushed, split, pulverised and a 50gm charge taken. Field duplicates, blanks and standards were submitted for QAQC analysis.</li> <li>• Repeat assays were undertaken on pulp samples at the discretion of the laboratory.</li> </ul>
<p><b>Quality of assay data and laboratory tests</b></p>	<ul style="list-style-type: none"> <li>• <i>The nature, quality and appropriateness of the assaying and laboratory procedures used and whether the technique is considered partial or total.</i></li> <li>• <i>For geophysical tools, spectrometers, handheld XRF instruments, etc, the parameters used in determining the analysis including instrument make</i></li> </ul>	<ul style="list-style-type: none"> <li>• Croesus Mining N.L.; Auger samples were sent to Ultratrace Laboratories, Perth, to be assayed for gold using the Aqua Regia method with a detection limit of 1ppb. RAB, aircore, RC and diamond samples were sent to Ultratrace Laboratories in Perth to be analysed for gold using Fire assay/ICP Optical Spectrometry. Diamond core check samples were analysed at Genalysis of Perth. Some diamond core samples were also analysed for platinum and palladium by fire assay.</li> <li>• Monarch Gold Mining Company Ltd; RC samples were sent to ALS Kalgoorlie to be analysed gold by fire assay (lab code Au-AA26). This was completed using a 50grm sample charge that was fused with a lead concentrate using the laboratory digestion method FA-Fusion</li> </ul>

Criteria	JORC Code explanation	Commentary
	<p><i>and model, reading times, calibrations factors applied and their derivation, etc.</i></p> <ul style="list-style-type: none"> <li>• <i>Nature of quality control procedures adopted (eg standards, blanks, duplicates, external laboratory checks) and whether acceptable levels of accuracy (ie lack of bias) and precision have been established.</i></li> </ul>	<p>and digested and analysed by Atomic Absorption Spectroscopy against matrix matched standard. RC samples were also sent to Ultra Trace Pty Ltd, Canning Vale Western Australia for gold analysis by lead collection fire assay. Samples were also analysed for palladium and platinum. The Quality control at ALS involved 84 pot fire assay system. The number and position of quality control blanks, laboratory standards and repeats were determined by the batch size. Three repeat samples were generally at position 10, 30, 50 of a batch and the control blanks (one blank) at the start of a batch of 84 samples. The laboratory standards were inserted randomly and usually two certified internal standards were analysed with a batch, but it was at the discretion of the 'run builder' as to how many standards to add to the batch and where to place them in the run. QAQC at Ultra Trace Pty Ltd was undertaken for every 27th sample. At random, two repeat samples were chosen, one laboratory standard was inserted and one check sample was taken. The check sample was chosen if the first pass of fire assay shows anomalous value.</p> <ul style="list-style-type: none"> <li>• Pancontinental Mining Ltd; Samples were sent to Genalysis Laboratory Services Pty Ltd in Perth to be analysed for gold with a detection limit of 0.01 ppm. They were also analysed for gold at SGS laboratory using aqua regia with AAS finish. A number of samples with an assay greater than 0.2 ppm were re-assayed by fire assay. Laboratory standards indicated reasonable accuracy.</li> <li>• Consolidated Gold N.L./DPPL; Auger samples were submitted to ALS Pty Ltd in Perth to be analysed for gold to a detection limit of 0.001ppm using ALS's PM2005 graphite furnace/AAS technique. Samples were also analysed for calcium, magnesium and arsenic using ALS's IC205 technique. RAB samples were submitted to Minlab Pty Ltd Kalgoorlie to be analysed for gold by fire. Some samples were also sent to Amdel Laboratories Ltd Kalgoorlie for gold analysis by fire assay method FAI.</li> <li>• Riverina Resources Pty Ltd; Auger soil samples were sent to Ultra Trace in Perth to be analysed for gold and arsenic using an aqua regia digest and determination by ICP-MS. RC samples were submitted to Kalgoorlie Assay Laboratory for gold analysis by 50gm fire assay. Samples from holes GNRC012 to GNRC020 were also sent Kalgoorlie Assay Laboratory for gold and nickel analysis using a four-acid digest and gold analysis by 50g fire assay. Martin Zone samples were to Kalgoorlie Assay Laboratories to be assayed Ni, Co, Cr, Cu, Mg, Mn, Fe, S, As, Al, Ca, and Zn using a four acid digest with ICP-OES finish and for Au using a 50gm fire assay digest with flame AAS finish. Some samples were also sent to Ultra Trace in Perth for analysis. 312 end of hole RAB samples from the Forehand Prospect were sent to AusSpec International in Sydney for HyChips spectral analysis developed by AusSpec International and CSIRO capable of analyzing dry samples stored in chip trays at a rate of at least 1,600 per day. This was undertaken to identify alteration minerals, weathered clays, Fe oxides, and weathering intensity as well as sample mineralogy including mineral crystallinity and mineral composition. (Results are in appendix 4 of Riverina Project Combined ATR 2006.pdf). Down Hole Electro-Magnetic (DHEM) surveys were conducted in RC drill holes GNRC001, GNRC003 and GNRC004 and three diamond drill holes. These surveys were completed by Outer Rim Exploration Services using a Crone Pulse EM probe. (Southern Geoscience Consultants were contracted to plan the DHEM surveys and interpret the results).</li> <li>• Barra Resources Ltd; Auger samples were sent to Ultra Trace Analytical Laboratories in Perth to be analysed for gold and arsenic. Gold was determined by Aqua Regia with ICP-Mass Spectrometry to a detection limit of 0.2ppb. All RC pulp samples were sent to Kalgoorlie Assay Laboratories or Australian Laboratory Services Pty Ltd (ALS) in Kalgoorlie for gold analysis. Gold analysis was completed using the 50gm fire assay technique with an AAS finish to a detection limit of 0.01ppm. Each was weighed and data captured, with the charge then intimately mixed with flux. Mixed sample and flux were fused in a ceramic crucible at 1100° C in a reducing furnace. Molten mass was then poured into moulds and allowed to cool. Lead button removed and placed in a cupellation furnace. The resultant dore bead was parted and digested, being made up to volume with distilled water. The analyte solution was aspirated against known calibrating standards using AAS. All diamond core sample pulps were sent to Leonora Laverton Assay Laboratory Pty Ltd to be assayed for gold by fire with an AAS finish to a detection limit of 0.01ppm Au. Some drill hole samples were analysed for gold (Fire assay/ICP Optical Spectrometry) by Ultratrace Laboratories in Perth.</li> <li>• Carpentaria Exploration Company Pty Ltd; Samples were sent to Australian Assay Laboratories Group in Leonora to be analysed for gold with a detection limit of 0.01 g/t Au by fire assay. Repeat assays undertaken for about 1 sample in 20. Field duplicates and standards routinely submitted with assay batches.</li> <li>• Malanti Pty Ltd; RC samples from RRC1 to RRC7 holes were sent to Aminya Laboratories Pty Ltd, Ballarat, Victoria, to be analysed for gold by fire assay with a detection limit of 0.01 g/t Au. RC samples from holes RRC8 to RRC12 submitted to Minesite Reference Laboratories, Wangara, Western Australia to be analysed for gold by Fire Assay of 50g charge (code FA50) with a 0.01ppm lower detection limit. About 1 in 20 assays was either a repeat or duplicate.</li> <li>• Riverina Gold Mines NL; RC samples from holes RV110 to RV164 and vacuum hole samples were sent to Leonora Laverton Assay Laboratory Pty Ltd, Leonora, to be analysed for gold. The charge was dissolved in aqua-regia/solvent digest with a double ketone</li> </ul>

Criteria	JORC Code explanation	Commentary
		<p>backwash and then assayed using AAS techniques with a detection limit of 0.02ppm. RC samples from holes RV230 to RV350, vacuum samples from holes RVV126 to RVV204 and RAB composite samples were sent to Multilab Pty Ltd in Kalgoorlie to be analysed for gold. The 50g samples were digested in aqua regia and assayed by AAS techniques with a detection limit of 0.01ppm. Other RC samples were sent to Minlab in Perth to be analysed for gold using the aqua regia digest and AAS finish. For vacuum and RAB samples, about 1 in 10 assays was a repeat. For RC holes from RV110 to RV164 and vacuum holes, at least 10 percent of a bulk order was repeated as a laboratory duplicate for quality control.</p> <ul style="list-style-type: none"> <li>• Riverina Gold NL; RAB samples were analysed for gold, silver, arsenic, lead, zinc, copper and nickel. RC samples were despatched to Genalysis to be analysed for gold by Aqua Regia/ AAS method. Diamond samples were set to Analabs in Kalgoorlie to be analysed for gold by fire with fusion AAA, copper, lead and silver by ASS with perchloric acid digestion and, arsenic by ASS with vapour generation and density using an air pynometer.</li> <li>• OBM - Samples sent to accredited laboratory. The samples have been analysed by firing a 50gm portion of the sample. This is the classical fire assay process and will give total separation of gold. An ICPOES finish is used. Commercially prepared standard samples and blanks are inserted in the sample stream at a rate of 1:10. Sizing results (percentage of pulverised sample passing a 75µm mesh) are undertaken on approximately 1 in 40 samples. The accuracy (standards) and precision (repeats) of assaying are acceptable.</li> <li>• Fire assay is considered a total technique, Aqua Regia is considered partial.</li> </ul>
<b>Verification of sampling and assaying</b>	<ul style="list-style-type: none"> <li>• <i>The verification of significant intersections by either independent or alternative company personnel.</i></li> <li>• <i>The use of twinned holes.</i></li> <li>• <i>Documentation of primary data, data entry procedures, data verification, data storage (physical and electronic) protocols.</i></li> <li>• <i>Discuss any adjustment to assay data.</i></li> </ul>	<ul style="list-style-type: none"> <li>• Holes are not deliberately twinned.</li> <li>• OBM - Geological and sample data logged directly into field computer at the core yard using Field Marshall. Data is transferred to Perth via email and imported into Geobank SQL database by the database administrator (DBA). Assay files are received in .csv format and loaded directly into the database by the DBA. Hardcopy and/or digital copies of data are kept for reference if necessary.</li> <li>• Monarch Gold Mining Company Ltd; Geological and sample data was logged digitally and .csv or .xls files imported into Datashed SQL database with in-built validation. Samples bags were put into numbered plastic bags and then cable tied. Samples collected daily from site by laboratory.</li> <li>• Data entry, verification and storage protocols for remaining operators is unknown.</li> <li>• No adjustments have been made to assay data.</li> </ul>
<b>Location of data points</b>	<ul style="list-style-type: none"> <li>• <i>Accuracy and quality of surveys used to locate drill holes (collar and down-hole surveys), trenches, mine workings and other locations used in Mineral Resource estimation.</i></li> <li>• <i>Specification of the grid system used.</i></li> <li>• <i>Quality and adequacy of topographic control.</i></li> </ul>	<ul style="list-style-type: none"> <li>• Croesus Mining N.L; All drilling was located using a Trimble/Omnistar DGPS with an accuracy of plus or minus 1m. Down hole surveys were either as planned or taken using electronic multi shot camera. The gird system used is AGD 1984 AMG Zone 51.</li> <li>• Monarch Gold Mining Company Ltd; The collar co-ordinates of aircore and RAB holes and RC holes RMRC001 to RMRC085 were surveyed using GPS. The co-ordinates of holes RMRC086 to RMRC177 were surveyed using the RTKGPS. All surveying was undertaken by staff of Monarch Gold Mining Company Ltd. Down hole surveys were undertaken every 5m by Ausmine using electronic multi-shot (EMS). The gird system used is GDA94 MGA Zone 51.</li> <li>• Pancontinental Mining Ltd; RC drilling at Mulwarrie was surveyed by McGay Surveys. The grid system used is AMG Zone 51. RAB drilling at Riverina South – holes drilled on local Riverina grid and transformed to MGAA using 2 point transformation. Holes were not routinely downhole surveyed.</li> <li>• Consolidated Gold N.L/DPPL; Auger holes located on AMG grid. Some RAB holes were drilled on an AMG grid installed by Kingston Surveys Pty Ltd of Kalgoorlie. Each 40m grid peg had an accurate (plus or minus 10 cm) northing, easting and elevation position. Other RAB holes drilled on local grid. Holes located using compass and hip chain from surveyed baselines. The grid system used is AMG Zone 51. RAB holes not down hole surveyed</li> <li>• Riverina Resources Pty Ltd; Collar co-ordinates were surveyed using a DGPS. Collar azimuth and inclination were recorded. Downhole surveys for most GNRC holes was by single shot and on rare occasions by gyro. Diamond holes surveyed by electronic multishot. The</li> </ul>

Criteria	JORC Code explanation	Commentary
		<p>grid system used is AGD 1984 AMG Zone 51.</p> <ul style="list-style-type: none"> <li>• Barra Resources Ltd; Collar co-ordinates for northings, eastings and elevation have been recorded. Collar azimuth and inclination were recorded. Drill hole collar data was collected by the First Hit mine surveyor and down hole data was collected by the drilling company and passed onto the supervising geologist. The grid system used is AGD84 Zone 51.</li> <li>• Carpentaria Exploration Company Pty Ltd; A local Riverina South grid was employed to record collar coordinates. Holes were not downhole surveyed. Local co-ordinates were transferred to the AMG and MGA grids using a 2-point transformation.</li> <li>• Malanti Pty Ltd; Collar locations of re-sampled RAB holes were noted using a GPS. Holes were not downhole surveyed. Two grid systems were employed; a local Riverina grid and AGD 1996 AMG Zone 51. Local co-ordinates were transferred to the AMG and MGA grids using a 2-point transformation.</li> <li>• Riverina Gold Mines NL; Collar co-ordinates for northings and eastings and have been recorded. Collar inclination was recorded. The grid used was the Riverina grid which is oriented to true north. The origin for this grid is 10,000N, 10,000E located at the south west corner of surveyed M30/98.</li> <li>• Riverina Gold NL; For diamond holes, down hole surveys were either assumed or taken using an Eastman camera or gyro. Diamond hole locations surveyed on Riverina local grid. RC and RAB holes located on surveyed Riverina local grid.</li> <li>• Topography has been surveyed by recent operators. Collar elevations are consistent with surrounding holes and the natural surface elevation.</li> <li>• OBM (RC, DD) MGA95, zone 51. Drill hole collar positions are picked up using a Trimble DGPS subsequent to drilling. Drill-hole, downhole surveys are recorded every 30m using a reflex digital downhole camera. Some RC holes not surveyed if holes short and/or drilling an early stage exploration project.</li> </ul>
<p><b>Data spacing and distribution</b></p>	<ul style="list-style-type: none"> <li>• <i>Data spacing for reporting of Exploration Results.</i></li> <li>• <i>Whether the data spacing and distribution is sufficient to establish the degree of geological and grade continuity appropriate for the Mineral Resource and Ore Reserve estimation procedure(s) and classifications applied.</i></li> <li>• <i>Whether sample compositing has been applied.</i></li> </ul>	<ul style="list-style-type: none"> <li>• Exploration results are reported for single holes only.</li> <li>• Drill hole spacing is adequate for the current resources reported externally. (Examples are discussed below)</li> <li>• Croesus Mining N.L; Auger samples were collected to infill a 250m x 100m grid, Riverina South RAB samples were collected to infill a 400m x 80m grid and Sunraysia RC drilling was completed on a 40m x 200m grid.</li> <li>• Monarch Gold Mining Company Ltd; RAB holes were drilled on 200m x 40m grids and RC holes were drilled on a 20m x 20m and 40m x 20m grids.</li> <li>• Riverina Resources Pty Ltd; Auger soil sampling program was taken over 50m x 50m, 50m x 100m and 50m x 200m spaced grids, Silver Tongue RAB and RC holes were drilled on 25m x 25m, 25m x 50m and 50m x 50m spaced grids and Corporate James RAB holes were drilled on 50m x 100m and 25m x 100m spaced grids.</li> <li>• Barra Resources Ltd; Auger soil sampling program was taken over 50m x 50m, 50m x 100m and 50m x 200m spaced grids, Silver Tongue RAB and RC holes were drilled on 25m x 25m, 25m x 50m and 50m x 50m spaced grids, Corporate James RAB holes were drilled on 50m x 100m and 25m x 100m spaced grids, Forehand RAB and RC holes were drilled on 50m x 100m, 50m x 50m or 25m x 50m spaced grids and Cactus RC holes were drilled on 10m x 10m, 20m x 20m and 40m x 50m spaced grids.</li> <li>• Drill intercepts are length weighted, 1g/t lower cut-off, not top-cut, maximum 2m internal dilution.</li> </ul>
<p><b>Orientation of data in relation to geological structure</b></p>	<ul style="list-style-type: none"> <li>• <i>Whether the orientation of sampling achieves unbiased sampling of possible structures and the extent to which this is known, considering the deposit type.</i></li> <li>• <i>If the relationship between the drilling orientation and the orientation of key mineralised structures is considered to have introduced a sampling bias, this should be assessed and reported if material.</i></li> </ul>	<ul style="list-style-type: none"> <li>• Drilling was oriented at 90° to the strike of mineralisation and inclined at 60°. Examples are discussed below.</li> <li>• Croesus Mining N.L; Holes were either vertical or inclined at 60° and oriented towards the west.</li> <li>• Monarch Gold Mining Company Ltd; Holes were inclined at 60° and oriented towards the west.</li> <li>• Consolidated Gold N.L/DPPL; Holes were inclined at 60° and oriented towards either the west or east.</li> <li>• Riverina Resources Pty Ltd; Holes were inclined at 60° and oriented towards either the west or east.</li> <li>• Barra Resources Ltd; Holes were either vertical or inclined at 60° and oriented towards the west.</li> <li>• Carpentaria Exploration Company Pty Ltd; Holes were inclined at 60° and oriented towards either the west or east.</li> <li>• Malanti Pty Ltd; Holes were inclined at 60° and oriented towards either the west or east.</li> <li>• Riverina Gold Mines NL; Vacuum holes from RVV1 to RVV69 and from RVV126 to RVV204 were drilled vertically. Vacuum holes from RVV70 to RVV125 were inclined at 60° and oriented either east or west. RAB and RC holes were inclined at 60° and oriented either east or west.</li> </ul>

Criteria	JORC Code explanation	Commentary
		<ul style="list-style-type: none"> <li>Riverina Gold NL; RC holes were inclined at 60° and oriented either east or west.</li> <li>OBM – Drilling predominately inclined at 60 degrees towards the west.</li> </ul>
<b>Sample security</b>	<ul style="list-style-type: none"> <li>The measures taken to ensure sample security.</li> </ul>	<ul style="list-style-type: none"> <li>Unknown for all drilling except for the following;</li> <li>Barra Resources Ltd. Samples received at the laboratory were logged in ALS Chemex’s unique sample tracking system. A barcode was attached to the original sample bag. The label was then scanned and the weight of sample recorded together with information such as date, time, equipment used and operator name.</li> <li>Monarch; Sample calicos were put into numbered plastic bags and cable tied. Any samples that going to SGS were collected daily by the lab. Samples sent to ALS were placed into sample crates and sent via courier on a weekly basis.</li> <li>OBM - Samples were bagged, tied and in a secure yard. Once submitted to the laboratories they are stored in cages within a secure fenced compound. Samples are tracked through the laboratory via their LIMS.</li> </ul>
<b>Audits or reviews</b>	<ul style="list-style-type: none"> <li>The results of any audits or reviews of sampling techniques and data.</li> </ul>	<ul style="list-style-type: none"> <li>OBM has reviewed historic digital data and compared it to hardcopy and digital (Wamex) records.</li> </ul>

## Section 2 Reporting of Exploration Results

(Criteria listed in the preceding section also apply to this section.)

Criteria	JORC Code explanation	Commentary						
<b>Mineral tenement and land tenure status</b>	<ul style="list-style-type: none"> <li>Type, reference name/number, location and ownership including agreements or material issues with third parties such as joint ventures, partnerships, overriding royalties, native title interests, historical sites, wilderness or national park and environmental settings.</li> <li>The security of the tenure held at the time of reporting along with any known impediments to obtaining a licence to operate in the area.</li> </ul>	<ul style="list-style-type: none"> <li>All tenure pertaining to this report is listed below</li> </ul> <table border="1"> <thead> <tr> <th>TENEMENT</th> <th>HOLDER</th> <th>AGREEMENTS</th> </tr> </thead> <tbody> <tr> <td>M30/256</td> <td>CARNEGIE GOLD PTY LTD.</td> <td></td> </tr> </tbody> </table> <ul style="list-style-type: none"> <li>Carnegie Gold PTY LTD is a wholly owned subsidiary of OBM.</li> <li>There are no known heritage or native title issues.</li> <li>There are no known impediments to obtaining a licence to operate in the area.</li> </ul>	TENEMENT	HOLDER	AGREEMENTS	M30/256	CARNEGIE GOLD PTY LTD.	
TENEMENT	HOLDER	AGREEMENTS						
M30/256	CARNEGIE GOLD PTY LTD.							
<b>Exploration done by other parties</b>	<ul style="list-style-type: none"> <li>Acknowledgment and appraisal of exploration by other parties.</li> </ul>	<ul style="list-style-type: none"> <li>Drilling, sampling and assay procedures and methods as stated in the database and confirmed from Wamex reports and hard copy records are considered acceptable and to industry standards of the time.</li> </ul>						
<b>Geology</b>	<ul style="list-style-type: none"> <li>Deposit type, geological setting and style of mineralisation.</li> </ul>	<ul style="list-style-type: none"> <li>The geology of the Riverina area consists of a sequence of meta-basalts with minor meta-sediments and meta-ultramafics that have a northerly strike and sub-vertical to steep east dip. The area has been affected by upper greenschist to lower amphibolite grade metamorphism with many minerals exhibiting strong preferred orientations. All rock units are foliated with shear zones common. The most intense shear zones have been locally referred to as mylonite zones. Contemporaneous strike faults and late stage faults have</li> </ul>						



Criteria	JORC Code explanation	Commentary
		<p>dislocated these mylonite zones.</p> <ul style="list-style-type: none"> <li>Intense mineralisation and alteration at the Riverina underground mine is confined to the mylonite zones and strike fault systems. Gold mineralisation is intimately associated with quartz veining and sulphides within a broader mylonite zone that also contains non-mineralised parallel quartz veins. Elsewhere mineralisation is found in favourable host rocks where intersected by N-S trending strike faults. Favourable hosts include meta sediments, mafics and mafic/ultramafic contacts</li> </ul>
<b>Drill hole Information</b>	<ul style="list-style-type: none"> <li><i>A summary of all information material to the understanding of the exploration results including a tabulation of the following information for all Material drill holes:</i> <ul style="list-style-type: none"> <li><i>easting and northing of the drill hole collar</i></li> <li><i>elevation or RL (Reduced Level – elevation above sea level in metres) of the drill hole collar</i></li> <li><i>dip and azimuth of the hole</i></li> <li><i>down hole length and interception depth</i></li> <li><i>hole length.</i></li> </ul> </li> <li><i>If the exclusion of this information is justified on the basis that the information is not Material and this exclusion does not detract from the understanding of the report, the Competent Person should clearly explain why this is the case.</i></li> </ul>	<ul style="list-style-type: none"> <li>See list of drill intercepts.</li> </ul>
<b>Data aggregation methods</b>	<ul style="list-style-type: none"> <li><i>In reporting Exploration Results, weighting averaging techniques, maximum and/or minimum grade truncations (eg cutting of high grades) and cut-off grades are usually Material and should be stated.</i></li> <li><i>Where aggregate intercepts incorporate short lengths of high grade results and longer lengths of low grade results, the procedure used for such aggregation should be stated and some typical examples of such aggregations should be shown in detail.</i></li> <li><i>The assumptions used for any reporting of metal equivalent values should be clearly stated.</i></li> </ul>	<ul style="list-style-type: none"> <li>Original assays are length weighted. Grades are not top cut. Lower cut off is nominally 1g/t. Maximum 2m internal dilution</li> <li>Metal equivalents not reported.</li> </ul>
<b>Relationship between mineralisation widths and intercept lengths</b>	<ul style="list-style-type: none"> <li><i>These relationships are particularly important in the reporting of Exploration Results.</i></li> <li><i>If the geometry of the mineralisation with respect to the drill hole angle is known, its nature should be reported.</i></li> <li><i>If it is not known and only the down hole lengths are reported, there should be a clear</i></li> </ul>	<ul style="list-style-type: none"> <li>Intercept widths are down hole lengths. True widths are not reported given the varying orientation of drilling and mineralisation at each deposit/prospect mentioned in the report.</li> <li>The geometry of the mineralisation at Riverina Mine is approx. N-S and sub vertical. Drilling is oriented perpendicular the strike of the mineralisation.</li> </ul>

Criteria	JORC Code explanation	Commentary
	<i>statement to this effect (eg 'down hole length, true width not known').</i>	
<b>Diagrams</b>	<ul style="list-style-type: none"> <li>• <i>Appropriate maps and sections (with scales) and tabulations of intercepts should be included for any significant discovery being reported. These should include, but not be limited to a plan view of drill hole collar locations and appropriate sectional views.</i></li> </ul>	<ul style="list-style-type: none"> <li>• See plans and sections.</li> </ul>
<b>Balanced reporting</b>	<ul style="list-style-type: none"> <li>• <i>Where comprehensive reporting of all Exploration Results is not practicable, representative reporting of both low and high grades and/or widths should be practiced to avoid misleading reporting of Exploration Results.</i></li> </ul>	<ul style="list-style-type: none"> <li>• The location of drill hole intersections is shown on the plans and 3D diagrams and are coloured according to grade to provide context for the highlighted intercepts</li> </ul>
<b>Other substantive exploration data</b>	<ul style="list-style-type: none"> <li>• <i>Other exploration data, if meaningful and material, should be reported including (but not limited to): geological observations; geophysical survey results; geochemical survey results; bulk samples – size and method of treatment; metallurgical test results; bulk density, groundwater, geotechnical and rock characteristics; potential deleterious or contaminating substances.</i></li> </ul>	<ul style="list-style-type: none"> <li>• There is a current DMP approval for mining at Riverina. This was applied for and granted to previous operator, Monarch Gold.</li> <li>• There are no known metallurgical issues for Riverina ores</li> </ul>
<b>Further work</b>	<ul style="list-style-type: none"> <li>• <i>The nature and scale of planned further work (eg tests for lateral extensions or depth extensions or large-scale step-out drilling).</i></li> <li>• <i>Diagrams clearly highlighting the areas of possible extensions, including the main geological interpretations and future drilling areas, provided this information is not commercially sensitive.</i></li> </ul>	<ul style="list-style-type: none"> <li>• Infill and extensional drilling at Riverina, Forehand, Silver Tongue, Sunraysia, followed by resource updates</li> <li>• Assessment of all regional data to develop new exploration targets.</li> </ul>

Criteria	JORC Code explanation	Commentary
<b>Sampling techniques</b>	<ul style="list-style-type: none"> <li>• <i>Nature and quality of sampling (eg cut channels, random chips, or specific specialised industry standard measurement tools appropriate to the minerals under investigation, such as down hole gamma sondes, or handheld XRF instruments, etc). These examples should not be taken as limiting the broad meaning of sampling.</i></li> </ul>	<ul style="list-style-type: none"> <li>• Aberfoyle/Bardoc - RC and RAB sampling methods generally undocumented however usually collected as 1m samples and composited to 2 to 4m samples when outside mineralised zones. Pre-1990 RAB holes generally sampled on 2-3m intervals and composited to 6m. Samples sent to accredited laboratories for drying, crushing and pulverising. Usually 50g fire assay for RC samples and aqua regia or 50g fire assay for RAB samples.</li> <li>• Ashton – RAB drilling sampled at 2m intervals and composited to 6m by methods undocumented. Samples sent to laboratories for drying, crushing and pulverising. A sub sample taken for analysis by fire assay or aqua regia.</li> </ul>

Criteria	JORC Code explanation	Commentary
	<ul style="list-style-type: none"> <li>• <i>Include reference to measures taken to ensure sample representivity and the appropriate calibration of any measurement tools or systems used.</i></li> <li>• <i>Aspects of the determination of mineralisation that are Material to the Public Report.</i></li> <li>• <i>In cases where 'industry standard' work has been done this would be relatively simple (eg 'reverse circulation drilling was used to obtain 1 m samples from which 3 kg was pulverised to produce a 30 g charge for fire assay'). In other cases more explanation may be required, such as where there is coarse gold that has inherent sampling problems. Unusual commodities or mineralisation types (eg submarine nodules) may warrant disclosure of detailed information.</i></li> </ul>	<ul style="list-style-type: none"> <li>• Billiton - RAB and RC 1m samples with RAB being composited to 2m. Diamond core of NQ size. Assay sample techniques undocumented</li> <li>• Consolidated Exploration (ConsEx) – RAB 1m samples usually dispatched as 3m composites but occasional 1m. RC a mix of 1m sampling or 2m composites. Lady Eileen programs RC drilling made use of roller, Blade or hammer with crossover sub all nominally 5.5 inch diameter to obtain 2-3kg sample. Composite 2m samples were hammer milled, mixed and split to 200g then pulverised. 1m samples single stage mix and ground. Sub –samples taken for aqua regia and fire assay.</li> <li>• Cons Gold (Consolidated Gold) – RC 1m samples where alteration is visible. Remainder of hole composited to 4m. 2 to 3 kg samples, including core, sent to laboratory for crushing, pulverising and 50g Fire Assay.</li> <li>• Croesus – RC 1m samples collected under cyclone. 5m comps assayed for gold by 50g Fire assay. NQ diamond except for geotechnical purposes (HQ triple).</li> <li>• Delta - RAB 5 metre composites (Aqua-regia with 50g charge) with 1m re-samples (Fire assay).</li> <li>• DPPL (Davyhurst Project Pty. Ltd.)- 4.25 to 5.5 inch RC drilling with face hammer. Potential mineralisation sampled and assayed on a metre basis otherwise 4m composites. Samples jaw crushed and pulverised before taking a 50gm charge for fire assay.</li> <li>• Ora Banda Mining (OBM) - RC samples collected from the riffle or cone splitter directly off rig into calico bags. Splitter maintained on level site to ensure sample representivity. 1m samples are dried, crushed, pulverised and a 40g charge is analysed by Fire Assay. Half core samples, cut by saw. Core sample intervals selected by geologist and defined by geological boundaries or sampled to 1m. Samples are crushed, pulverized and a 40g or 50g charge is analysed by Fire Assay.</li> <li>• Hill Minerals - 1m and 4m concurrent sampling of RC drilling. Samples analysed by Genalysis by AAS following mixed acid digestion.</li> <li>• Intrepid - RC drilling with 1m samples in mineralised zones and varying composite lengths up to 5m elsewhere. Analysis by AAS, assumed to be Aqua regia. Unknown weight of charge. Diamond core samples predominately 0.5m of half core.</li> <li>• Monarch - Riffle split RC samples were collected at 1m intervals and despatched for analysis by pulverisation and fire assay. Selected RAB 2m-4m scoop composites and 1m intervals were despatched for analysis, usually by aqua regia. Not all intervals were sampled. All samples dried, crushed, milled and split before taking a sub sample for analysis</li> <li>• Kersey - RC drilling 1m samples passed through riffle splitter and composited. Resulting composite was re-split on site for a 1-2kg sample. RAB hole sample cones quartered by trowel and composited over 4m. Wet samples were grab sampled. 30g charge for AAS</li> <li>• Normandy - RAB 1m sampling with 4m composites dispatched for assay using 50g Aqua-regia followed by graphite furnace AAS.</li> <li>• Pancontinental – RAB sampling methods undocumented</li> <li>• Perilya – RAB and AC sampling methods undocumented</li> <li>• Texas Gulf – Sampling methods undocumented</li> <li>• West Coast Holdings – RAB drilling 2m intervals were passed though riffle splitter for approximately 1kg sample. Industry standard analysis completed by SGS labs, fire assay and aqua regia.</li> <li>• WMC - RC Sampling on 1m basis, assayed by aqua regia method, unknown laboratory.</li> </ul>
<b>Drilling techniques</b>	<ul style="list-style-type: none"> <li>• <i>Drill type (eg core, reverse circulation, open-hole hammer, rotary air blast, auger, Bangka, sonic, etc) and details (eg core diameter, triple or standard tube, depth of diamond tails, face-sampling bit or other type, whether core is oriented and if so, by what method, etc).</i></li> </ul>	<ul style="list-style-type: none"> <li>• Aberfoyle/Bardoc - RC, RAB and Diamond details undocumented however NQ diamond known to be used. RC drilling between 4 and 6 inch diameter with use of face sampling hammer known from 1992 onwards.</li> <li>• Ashton RAB drilling. Details undocumented</li> <li>• Billiton RAB and RC (Conventional hammer) diameter undocumented with use of roller/blade and hammer. NQ Diamond core</li> <li>• ConsEx - RC drilling with roller, blade or hammer with crossover sub.</li> <li>• Cons Gold – NQ diamond and HQ (triple) for geotechnical holes. RAB and RC. 4.25 to 5.5 inch RC drilling with stabilisers and face sampling hammers.</li> </ul>

Criteria	JORC Code explanation	Commentary
		<ul style="list-style-type: none"> <li>• Croesus – Diamond holes NQ2 diameter. RC and RAB details undocumented but assumed to be industry standard at the time being 5.5 inch face sampling hammers and 4 inch diameter respectively.</li> <li>• Delta – RAB - details undocumented</li> <li>• DPPL - NQ core and HQ for geotechnical holes. RC drilling with stabilisers and face sampling hammers.</li> <li>• OBM- HQ3 coring to approx. 40m, then NQ2 to BOH. All core oriented by spear and/or reflex instrument. RC drilled with face sampling hammer, 5.25" diameter</li> <li>• Hill Minerals - RC - details undocumented.</li> <li>• Intrepid – RC drilling and diamond/diamond tails. Size and types undocumented.</li> <li>• Monarch - RC samples were collected by Kennedy Drilling using a 4 inch blade and 5.5 inch face sampling hammer. RAB drill details undocumented.</li> <li>• Kersey - Details of RC and RAB drilling details undocumented but assumed to be industry standard at the time being 5.5 inch face sampling hammers and 4 inch diameter respectively.</li> <li>• Normandy – RAB with both hammer and blade using Schramm 42.</li> <li>• Pancontinental – Details of RAB drilling undocumented.</li> <li>• Perilya – Details of RAB and Aircore drilling undocumented.</li> <li>• Texas Gulf – Conventional RC hammer, diameter undocumented</li> <li>• West Coast Holdings – 4 inch blade, roller and open hole hammer used for RAB drilling.</li> <li>• WMC – Conventional RC hammer, diameter unknown and RAB drilling details undocumented</li> </ul>
<b>Drill sample recovery</b>	<ul style="list-style-type: none"> <li>• <i>Method of recording and assessing core and chip sample recoveries and results assessed.</i></li> <li>• <i>Measures taken to maximise sample recovery and ensure representative nature of the samples.</i></li> <li>• <i>Whether a relationship exists between sample recovery and grade and whether sample bias may have occurred due to preferential loss/gain of fine/coarse material.</i></li> </ul>	<ul style="list-style-type: none"> <li>• RC drill recoveries were not recorded by Aberfoyle/Bardoc, Annaconda, Ashton, Consolidated Gold, Croesus, Delta, DPPL, OBM, Hill Minerals, Intrepid, Monarch, Mt Kersey, Normandy, Pancontinental, Texas Gulf, West coast holdings or WMC</li> <li>• Billiton – Recoveries for some RC drilling programs were examined in 1986 but raw data not available.</li> <li>• ConsEx – 2 metre plastic pipe inserted into cyclone vent. Cyclone washed at the end of each hole or if water injected. Sample weights measured for Homeward bound (no bias observed) and Lady Eileen prospects (generally no bias observed aside from two high grade samples perceived to be due to coarse grained gold)</li> <li>• Perilya - Method undocumented but quality, moisture, sample quality and % recovery logged</li> <li>• OBM - Diamond drill recoveries are recorded as a percentage calculated from measured core against downhole drilled intervals (core blocks). RC sample recoveries not recorded.</li> <li>• It is unknown whether a relationship exists between sample recovery and grade or whether sample bias may have occurred.</li> </ul>
<b>Logging</b>	<ul style="list-style-type: none"> <li>• <i>Whether core and chip samples have been geologically and geotechnically logged to a level of detail to support appropriate Mineral Resource estimation, mining studies and metallurgical studies.</i></li> <li>• <i>Whether logging is qualitative or quantitative in nature. Core (or costean, channel, etc) photography.</i></li> <li>• <i>The total length and percentage of the relevant intersections logged.</i></li> </ul>	<ul style="list-style-type: none"> <li>• Aberfoyle/Bardoc - Qualitative: lithology, colour, grainsize, structures, alteration. Quantitative: Quartz mineralisation</li> <li>• Ashton - Qualitative: colour, lithology, alteration, oxidation. Quantitative: Quartz</li> <li>• Billiton - Qualitative: lithology, alteration for Diamond and RAB. RC logging details unavailable</li> <li>• Consolidated Exploration- Qualitative: lithology, colour, alteration, grainsize (at times). Quantitative: Quartz mineralisation at times</li> <li>• Consolidated Gold/ DPPL - Qualitative: lithology , colour, oxidation, alteration, with grainsize, texture and structure often recorded in diamond drilling. Quantitative: Quartz veining. Core photographed. Logging entered directly into HPLX200 data loggers.</li> <li>• Croesus - Most holes photographed, geologically logged and geotechnical and magnetic susceptibility measurements were taken. Qualitative: Lithology, colour, grainsize, alteration, oxidation, texture, structures, regolith. Quantitative: Quartz veining</li> <li>• Delta - Qualitative: Lithology, colour, alteration, oxidation, structure, minerals/sulphides. Quantitative: Quartz veining</li> <li>• OBM - Qualitative: Lithology, colour, oxidation, grainsize, texture, structure, hardness, regolith. Quantitative: estimates are made of quartz veining, sulphide and alteration percentages. Core photographed</li> <li>• Hill Minerals - Qualitative: lithology, colour. Quantitative: Quartz veining</li> </ul>

Criteria	JORC Code explanation	Commentary
		<ul style="list-style-type: none"> <li>• Intrepid – No detailed logging kept for RC drilling. Diamond logging: Colour, lithology, oxidation, texture, alteration, mineralisation, grain size, structure</li> <li>• Monarch - Qualitative: lithology, colour, oxidation, grainsize, texture, structure, hardness, regolith. Quantitative: estimates are made of quartz veining, sulphide percentages. Core photographed</li> <li>• Mt Kersey - Qualitative: lithology, colour, alteration, oxidation, fabric, hardness, BOCO, grainsize. Quantitative: minerals, quartz</li> <li>• Normandy – Qualitative: lithology, regolith, colour, mineralogy, oxidation</li> <li>• Pancontinental – logging details undocumented</li> <li>• Perilya - Qualitative: lithology, colour, oxidation, mineralogy, grain size, alteration, schistosity, texture, regolith at times. Quantitative: recovery, veining</li> <li>• Texas Gulf - Qualitative: lithology, oxidation</li> <li>• West coast holdings - Qualitative: colour, oxidation, lithology, alteration. Quantitative: Quartz, Iron</li> <li>• WMC RC: Qualitative: Lithology, Colour, Grainsize, Alteration and oxidation</li> <li>• Some logging detail was lost during translation from one logging system to another. This has been rectified by referring back to original logs.</li> </ul>
<b>Sub-sampling techniques and sample preparation</b>	<ul style="list-style-type: none"> <li>• <i>If core, whether cut or sawn and whether quarter, half or all core taken.</i></li> <li>• <i>If non-core, whether riffled, tube sampled, rotary split, etc and whether sampled wet or dry.</i></li> <li>• <i>For all sample types, the nature, quality and appropriateness of the sample preparation technique.</i></li> <li>• <i>Quality control procedures adopted for all sub-sampling stages to maximise representivity of samples.</i></li> <li>• <i>Measures taken to ensure that the sampling is representative of the in situ material collected, including for instance results for field duplicate/second-half sampling.</i></li> <li>• <i>Whether sample sizes are appropriate to the grain size of the material being sampled.</i></li> </ul>	<ul style="list-style-type: none"> <li>• Ashton - Compositing and re splitting methods undocumented. Classic Laboratories methods undocumented. Genalysis: single stage mix and grind. Pulp duplicates taken at the pulverising stage and selective repeats conducted at the discretion of the laboratory.</li> <li>• Billiton – Sub-sampling methods undocumented. 1m repeat fire assays of 2m RAB comps at Lady Eileen were done. Duplicates for RAB and RC inserted however frequency unknown.</li> <li>• Aberfoyle/Bardoc – Diamond core sawn in half. RC and RAB samples with variable compositing lengths and often 1m samples. Method undocumented before 1992, but thereafter riffle split to approximately 2kg samples. RC and RAB was usually prepared by single stage mixer and grind. Diamond, when known was jaw crushed and ring milled for a 50g charge fire assay. Sample duplicate studies undertaken at times, usually with good correlation</li> <li>• ConsEx – RC holes sampled on 1m basis and riffle split to 1-2kg samples for 3m composites or 2-3kg samples for 2m composites. Composite 2m samples were hammer milled, mixed and split to 200g then pulverised to 200#. 1m samples single stage mix and ground to 200#.</li> <li>• Consgold - RC Samples collected via cyclone at 1m intervals and passed through 3 stage riffle splitter. A 2-3kg fraction was calico bagged for analysis, the residue collected in plastic bags and stored on site. Potentially mineralised zones were sampled at 1m intervals, the remainder composited to 4m by unknown method. Composite samples returning &gt;0.19g/t were re submitted at 1m intervals. Samples underwent mixermill preparation (2-3kg) by Amdel Laboratories. RAB 4m composite samples using PVC spear. Samples returning &gt;0.19g/t were re submitted at 1m intervals. Diamond drill samples were sawn into half core. One half was jaw crushed, then pulverised using a labtechnics mill. A quartz blank was pulverised between each sample to avoid contamination. Field duplicates from residues at 1 in 20 frequency submitted.</li> <li>• Croesus RC/RAB - 1m samples collected under cyclone. 5m comps, spear sampled with 50mm PVC pipe. Wet RC drill samples were thoroughly mixed in the sample retention bag and scoop sampled to form a composite sample. 3-5kg five metre composite analytical samples, returning values greater than 0.1g/t gold, were riffle split at 1m intervals, were samples where dry, and grab sampled where wet. RAB 1m resampling method undocumented. Samples were dried, crushed and split to obtain a sample less than 3.5kg, and then fine pulverised prior to a 50gm charge being collected and analysed. Every 20<sup>th</sup> sample was duplicated in the field and submitted for analysis. Diamond tails were cut to half core and sampled based on geological boundaries and identified prospective zones. Samples size varied from 0.2m to 1m. Core samples were sent to Ultratrace Laboratories of Perth</li> </ul>

Criteria	JORC Code explanation	Commentary
		<ul style="list-style-type: none"> <li>• Delta – RAB: 5m composite samples were total mixer mill prepped and a 50g charge taken for aqua regia analysis. Individual 1m samples re-submitted as if composite result &gt;0.1ppm Au.</li> <li>• DPPL – RC 3 stage riffle split then 4m compositing. RAB 4m composites sampled using PVC spear. Both RC and RAB composites returning &gt;0.19ppm Au re-submitted as 1m samples. Field duplicates from residues at 1 in 20 frequency submitted.</li> <li>• OBM – RC samples riffle split into calico bags. Wet or moist samples are noted during sampling. Core was cut with diamond saw and half core sampled. All mineralized zones are sampled, including portions of visibly un-mineralised hanging wall and footwall zones. Sample weights range from &gt;1kg to 3.5kg. Samples weighed by laboratory, dried and split to &lt;3kg if necessary and pulverized by LM-5</li> <li>• Hill Minerals – RC composited by undocumented methods to 4m then 1m samples re-submitted if 4m composite was above 0.25 g/t.</li> <li>• Intrepid – RC methods undocumented. Typically a mixture of 1m samples and 5m composites (but range from 2m to 7m). Diamond - Core cut in half in lode mineralisation or expected projections of such. 40 replicate samples of core were fire assayed with no significant differences.</li> <li>• Monarch - RC samples were collected at 1m intervals. Composite sampling methods undocumented. Samples were riffle split and prepared with single stage mix and grinding. ALS procedure: The samples were sort and dried where necessary. The samples were split via a riffle splitter to &lt;3 kg and round in a ring mill pulverized using a standard low chrome steel ring set to &gt;85% passing 75 micron. If sample was &gt;3 kg it was split prior to pulverising and the remainder retained or discarded. Then a 250g representative split sample was taken and the remaining residue sample stored. Ultra Trace procedures: The samples were sorted and dried where necessary. 2.5 – 3kg sample was pulverized using a vibrating disc then split into a 200 -300g charge and the residue sample stored. Duplicates are taken 1 in 25 when taking 1m splits straight from the rig. When doing re-splits on composite results 1 in 20 duplicate with occasional triplicates (about 1 every 50 re-splits)</li> <li>• Mt Kersey - RC drilling 1m samples passed through riffle splitter and composited. Resulting composite was re-split on site for a 1-2kg sample. Wet samples were grab sampled. RAB - Cones quartered by trowel and composited over 4m. Wet samples were grab sampled. Samples oven dried the pulverised to nominal 75 microns, 400-500g is then split and residue stored.</li> <li>• Normandy – RAB, 4m composites, sample method undocumented. Assays analysed for low level gold (ppb)</li> <li>• Pancontinental – No methods or measures known</li> <li>• Perilya - No methods or measures known</li> <li>• Texas Gulf - Whole metres placed in plastic sacks and were then split to approximately 500g samples. Split method undocumented. Samples crushed, disc pulverized then split to 250g. Petrographic study completed by Mintek Services.</li> <li>• West coast holdings - 2m intervals collected through a cyclone and passed though riffle splitter for approximately 1kg sample.</li> <li>• WMC - RC Sampling on 1m basis, methods undocumented. Assay by aqua regia method, unknown laboratory.</li> </ul>
<b>Quality of assay data and laboratory tests</b>	<ul style="list-style-type: none"> <li>• <i>The nature, quality and appropriateness of the assaying and laboratory procedures used and whether the technique is considered partial or total.</i></li> <li>• <i>For geophysical tools, spectrometers, handheld XRF instruments, etc, the parameters used in determining the analysis including instrument make and model, reading times, calibrations factors applied and their derivation, etc.</i></li> <li>• <i>Nature of quality control procedures adopted (eg standards, blanks, duplicates, external laboratory checks) and whether acceptable levels of accuracy (ie lack of bias) and precision have been established.</i></li> </ul>	<ul style="list-style-type: none"> <li>• Aberfoyle/Bardoc – multiple analysis methods at Sheen, Amdel, Genalysis, Classic, Comlabs and Australian Laboratories. Usually 50g fire assay for RC and aqua regia or 50g fire assay for RAB. Aberfoyle conducted assay QAQC studies periodically, usually on a deposit basis, however these were not well documented.</li> <li>• Ashton - Fire assay and AAS at Classic Labs and Genalysis. Genalysis involved single stage mix and grind. Genalysis utilised internal FA stds.</li> <li>• Billiton - Laboratory and methods undocumented. Standards for RAB and RC inserted however frequency unknown</li> <li>• ConsEx – Genalysis composite 2m samples were hammer milled, mixed and split to 200g then pulverised to 200#. 1m samples single stage mix and ground to 200#. Phase 1 standard wet chemical multi acid digestion and AAS. Second phase were also pre-roasted. Results of &gt;1g/t re-assayed by fire assay. Check assays at umpire lab (Classic labs) for Lady Eileen drilling - significant differences in high grade samples, otherwise considered good.</li> </ul>

Criteria	JORC Code explanation	Commentary
		<ul style="list-style-type: none"> <li>Consolidated Gold/ DPPL – RC and RAB - Mixermill prep with fire assay 50g charge at AMDEL, Minilab or Analabs Laboratories in Kalgoorlie. Half core was diamond sawn, jaw crushed, milled using LABTECHNICS mill at AMDEL for 50g charge by fire assay. Gannet standards submitted to monitor lab accuracy for infill resource drilling. Pulp umpire analysis was done but frequency unknown (1995). Screen fire assays of selected high grade samples. Quartz blanks submitted between each diamond core sample.</li> <li>Croesus samples analysed for Au by Fire Assay/ICPOES by Ultratrace in Perth. Gannet standards and blank samples made by Croesus were submitted with split sample submissions. QAQC analysis of repeats was analysed by Croesus Mining NL. for their drilling completed during 2000.</li> <li>Delta - Analysis at Genalysis, Kalgoorlie. Total mixer mill prep, Aqua-regia with 50g charge, 0.01ppm detection limit. 1m re-samples: as above but with 50g charge fire assay. Standards submitted although frequency and certification undocumented.</li> <li>OBM - Samples sent to Bureau Veritas laboratory in Kalgoorlie or Intertek. The samples have been analysed by Firing a 40 gm (Bureau Veritas) or 50gm (Intertek) portion of the sample. Lower sample weights may be employed for samples with very high sulphide and metal contents. This is the classical fire assay process and will give total separation of gold. An AAS finish (Bureau Veritas) or ICPOES (Intertek) is used. Commercially prepared standard samples and blanks are inserted in the sample stream at a rate of 1:10. Sizing results (percentage of pulverised sample passing a 75µm mesh) are undertaken on approximately 1 in 40 samples. The accuracy (standards) and precision (repeats) of assaying are acceptable.</li> <li>Hill Minerals - AAS following mixed acid digestion at Genalysis, Perth.</li> <li>Intrepid - Samples assayed by atomic absorption (Aqua regia?) at Kalgoorlie Assay Labs.</li> <li>Monarch - ALS Laboratory procedures: A 50g sample charge was taken from the 250g representative sample, fused with a lead concentrate using the laboratory digestion method FA-Fusion, then digested and analysed by Atomic Absorption Spectroscopy (Au-AA26) against matrix matched standards. Ultra Trace procedures: A 40g sample charge is taken and analysed for gold (Au) by lead collection fire assay.</li> <li>Mt Kersey - RAB and RC samples: 30g charge with 0.02 ppm DL by aqua regia with a D.I.B.K and Ortho Phosphoric acid extraction. AAS at AAL group.</li> <li>Normandy - Amdel Laboratories, Perth using 50g Aqua-regia followed by graphite furnace AAS. Also by IC2E - digesting 1g subsample of pulp in aqua regia, bulked with water, then passed through an ICP-OES. Duplicate samples were sent to a different, undocumented lab.</li> <li>Pancontinental - Method undocumented. 2 RC holes were re-split and fire assayed and some screen fire assayed</li> <li>Perilya - 10ppb Au detection limit at Analabs Perth by Method P649, 50g Aqua Regia, DIBK, Carbon Rod (10ppb D.L.)</li> <li>Texas Gulf - Samples crushed, disc pulverized then split to 250g. Bromine digest followed by ketone extraction at Pilbara Labs, Kalgoorlie. Noted as not suitable in presence of sulphides. Values greater than 0.8g/t re-assayed by fire assay.</li> <li>West coast holdings Assayed by both AAS (Aqua Regia) and Fire Assay at SGS labs</li> <li>WMC drill samples were assayed by aqua regia method, unknown laboratory.</li> <li>Fire assay is considered a total technique and aqua regia is considered a partial technique.</li> <li>Historic operators assayed by "AAS". This is assumed to be aqua regia.</li> </ul>
<b>Verification of sampling and assaying</b>	<ul style="list-style-type: none"> <li>The verification of significant intersections by either independent or alternative company personnel.</li> <li>The use of twinned holes.</li> <li>Documentation of primary data, data entry procedures, data verification, data storage (physical and electronic) protocols.</li> <li>Discuss any adjustment to assay data.</li> </ul>	<ul style="list-style-type: none"> <li>OBM geologists have viewed selected diamond holes from certain deposits, including Waihi and verified the location of mineralised intervals.</li> <li>Twinned holes were occasionally used by previous operators but this practice was not common.</li> <li>Monarch Gold Mining Company Ltd; Geological and sample data was logged digitally and .csv or .xls files imported into Datashed SQL database with in-built validation. Samples bags were put into numbered plastic bags and then cable tied. Samples collected daily from site by laboratory</li> </ul>

Criteria	JORC Code explanation	Commentary
		<ul style="list-style-type: none"> <li>• OBM - Geological and sample data logged directly into field computer at the core yard using Field Marshall. Data is transferred to Perth via email and imported into Geobank SQL database by the database administrator (DBA). Assay files are received in .csv format and loaded directly into the database by the DBA. Hardcopy and/or digital copies of data are kept for reference if necessary.</li> <li>• Data entry, verification and storage protocols for remaining operators is unknown.</li> <li>• No adjustments have been made to assay data.</li> </ul>
<b>Location of data points</b>	<ul style="list-style-type: none"> <li>• <i>Accuracy and quality of surveys used to locate drill holes (collar and down-hole surveys), trenches, mine workings and other locations used in Mineral Resource estimation.</i></li> <li>• <i>Specification of the grid system used.</i></li> <li>• <i>Quality and adequacy of topographic control.</i></li> </ul>	<ul style="list-style-type: none"> <li>• RAB and AC holes are/were not routinely collar surveyed or downhole surveyed due to their limited use in resource estimation. To this end, discussion of RAB and AC drilling is omitted from this section. RC/GC (grade control) and shallow RC holes are/were not routinely downhole surveyed due to their shallow nature reducing the chance of significant deviation. Barren exploration RC holes not routinely downhole surveyed or collar surveyed. DD holes routinely collar and downhole surveyed by most operators or have been re-surveyed by subsequent operators.</li> <li>• The influence of magnetic rocks on the azimuths of magnetic down hole surveys is minor. Early holes surveyed in AMG zone 51 and converted to MGA using Geobank and or Datashed data management software.</li> <li>• Aberfoyle/Bardoc (RC, RC/DD, DD) Various local grids which have undergone 2 point transformations. RC collars and downhole surveys known to be surveyed at times, presumably when anomalous gold intersected. DD holes downhole surveyed by Eastman single shot (25m interval average) or Multishot (5m interval average)</li> <li>• Billiton (RC, DD) Local Lights of Israel grid undergone 2 point transformation. Downhole surveys when performed were by undocumented method with a 25m interval average</li> <li>• ConsEx (RC). Drilled on local grids (possibly truncated AMG84, zone 51). Holes appear to have been surveyed using AMG, zone 51 grid at a later stage. Numerous vertical holes not down-hole surveyed. Downhole surveys when performed were by undocumented method with a 9m interval average</li> <li>• Cons Gold/DPPL (RC, DD) Local grids and AMG84 zone 51 used. RC and DD Collars surveyed by licensed surveyors to respective grids. Holes of all types routinely collar surveyed whist RC resource holes routinely downhole surveyed by various methods including gyro and EMS with average intervals ranging between 10-25m.</li> <li>• Croesus (RC, DD) Various local grids and AMG zone 51. RC, DD holes routinely collar surveyed and downhole surveyed using Electronic Multishot (EMS), GRYO, Eastman single shot or combination thereof at 10-15m average interval.</li> <li>• Hills (RC) Local grid used.</li> <li>• Monarch(RC) -Various local grids and MGA. Holes routinely collar surveyed and downhole surveyed using EMS, or GYRO at 5m interval average or Eastman single shot (28m interval average).</li> <li>• Mt Kersey(RC) Truncated AMG grid used</li> <li>• Prospector (DD). Unknown</li> <li>• OBM (RC, DD) MGA95, zone 51. Drill hole collar positions are picked up using a Trimble DGPS subsequent to drilling. Drill-hole, downhole surveys are recorded every 30m using a reflex digital downhole camera. Some RC holes not surveyed if holes short and/or drilling an early stage exploration project.</li> <li>• Texasgulf (RC) Local grid: MC30/1317 based on 351.5°baseline, parallel to tenement boundary. MC30/1327 based on 355.5°</li> <li>• WMC (RC, DD) - Digital data provided by ConsGold. (Wamex report a50226). Downhole surveys when performed were by undocumented method with a 16m interval average</li> </ul>
<b>Data spacing and distribution</b>	<ul style="list-style-type: none"> <li>• <i>Data spacing for reporting of Exploration Results.</i></li> <li>• <i>Whether the data spacing and distribution is sufficient to establish the degree of geological and grade continuity appropriate for the Mineral Resource and Ore Reserve estimation procedure(s) and classifications applied.</i></li> <li>• <i>Whether sample compositing has been applied.</i></li> </ul>	<ul style="list-style-type: none"> <li>• Data spacing highly variable from wide spaced ~800m x ~80m regional RAB to close spaced resource drilling ~10m x ~10m and grade control drilling at ~5m x ~5m.</li> <li>• Drill hole spacing is adequate to establish geological and grade continuity for the deposits that currently have resources reported.</li> <li>• Drill intercepts are length weighted, 1g/t lower cut-off, not top-cut, maximum 2m internal dilution.</li> </ul>



Criteria	JORC Code explanation	Commentary
<b>Orientation of data in relation to geological structure</b>	<ul style="list-style-type: none"> <li>Whether the orientation of sampling achieves unbiased sampling of possible structures and the extent to which this is known, considering the deposit type.</li> <li>If the relationship between the drilling orientation and the orientation of key mineralised structures is considered to have introduced a sampling bias, this should be assessed and reported if material.</li> </ul>	<ul style="list-style-type: none"> <li>For most of the deposits in and around Davyhurst the prevailing geological and structural trend is approx. North-South. Once the orientation of mineralisation was established drilling was mostly oriented at 90° to the strike of mineralisation and inclined at 60°.</li> <li>It is unknown whether the orientation of sampling achieves unbiased sampling, though it is considered unlikely.</li> </ul>
<b>Sample security</b>	<ul style="list-style-type: none"> <li>The measures taken to ensure sample security.</li> </ul>	<ul style="list-style-type: none"> <li>Undocumented for most operators.</li> <li>ConsGold – RC residues stored onsite</li> <li>Monarch - Pre-numbered sample bags were put into numbered plastic bags. These numbers were written on the submission forms which were checked by the geologist. Plastic bags were then securely cable tied and placed in a secure location. Samples were then picked up by the Lab in Kalgoorlie or deliver to Perth via courier. A work order conformation was emailed to Monarch personnel for each sample submission once samples were received by the Laboratory.</li> <li>OBM – Samples are bagged, tied and placed in a secure yard. Once submitted to the laboratories they are stored in cages within a secure fenced compound. Samples are tracked through the laboratory via their LIMS.</li> <li>West coast holdings - Residues stored on site but security measures undocumented</li> <li>Texas Holdings - Residues stored on site but security measures undocumented</li> </ul>
<b>Audits or reviews</b>	<ul style="list-style-type: none"> <li>The results of any audits or reviews of sampling techniques and data.</li> </ul>	<ul style="list-style-type: none"> <li>No audits of sampling techniques has been done.</li> </ul>

(Criteria in this section apply to all succeeding sections.)

## Section 2 Reporting of Exploration Results

(Criteria listed in the preceding section also apply to this section.)

Criteria	JORC Code explanation	Commentary						
<b>Mineral tenement and land tenure status</b>	<ul style="list-style-type: none"> <li>Type, reference name/number, location and ownership including agreements or material issues with third parties such as joint ventures, partnerships, overriding royalties, native title interests, historical sites, wilderness or national park and environmental settings.</li> <li>The security of the tenure held at the time of reporting along with any known impediments to obtaining a licence to operate in the area.</li> </ul>	<ul style="list-style-type: none"> <li>All tenure pertaining to this report is listed below</li> </ul> <table border="1"> <thead> <tr> <th>TENEMENT</th> <th>HOLDER</th> <th>AGREEMENTS</th> </tr> </thead> <tbody> <tr> <td>M30/255</td> <td>CARNEGIE GOLD PTY LTD.</td> <td></td> </tr> </tbody> </table> <ul style="list-style-type: none"> <li>Carnegie Gold PTY LTD is a wholly owned subsidiary of OBM.</li> <li>There are no known heritage or native title issues.</li> <li>There are no known impediments to obtaining a licence to operate in the area.</li> </ul>	TENEMENT	HOLDER	AGREEMENTS	M30/255	CARNEGIE GOLD PTY LTD.	
TENEMENT	HOLDER	AGREEMENTS						
M30/255	CARNEGIE GOLD PTY LTD.							

Criteria	JORC Code explanation	Commentary
<b>Exploration done by other parties</b>	<ul style="list-style-type: none"> <li><i>Acknowledgment and appraisal of exploration by other parties.</i></li> </ul>	<ul style="list-style-type: none"> <li>Modern exploration commenced at the Davyhurst sites in the 1980s. Three companies, Jones Mining, Western Mining Corporation (WMC) and Hill Minerals pegged claims surrounding the historic Davyhurst sites. In 1986, WMC established a 300,000 tonne per annum carbon-in-pulp (CIP) treatment plant at Davyhurst and commenced open pit mining at Golden Eagle and Waihi. In 1988 WMC's and Jones Mining's assets were acquired by Consolidated Exploration Ltd. Consolidated Exploration then developed open cut mines at Great Ophir, Lady Eileen, Lady Eileen South and Homeward Bound. At about the same time Aberfoyle Resources / Hill Minerals commenced open-pit mining at the Lights of Israel Deposit and trucked the ore 80 km to the Bardoc processing plant. During 1995/96 Consolidated Exploration Ltd. restructured as Consolidated Gold NL (CGNL) and commenced tenement acquisition and exploration activities in the area. This resulted in the consolidation of holdings in the district. In December 1996 CGNL acquired the assets of Aberfoyle Resources in the area, including the Bardoc Processing plant, in an equity transaction. The Bardoc plant was relocated to the Davyhurst site and upgraded to 1.2 Mt/y. In October 1998 Davyhurst Project Pty Ltd (DPPL), a subsidiary of NM Rothschild and Sons (Australia), acquired the project. In 2000, Croesus Mining NL ("Croesus") acquired the Davyhurst Project and continued operations until 2005. In January 2006, Monarch Gold Mining Company Limited (Monarch) acquired Davyhurst and operated the project until 2008. The project has been in care and maintenance since then.</li> <li>Drilling, sampling and assay procedures and methods as stated in the database and confirmed from Wamex reports and hard copy records are considered acceptable and to industry standards of the time. There is sufficient understanding of drilling, sampling and assay methodologies for the majority of drilling in the Davyhurst area. The company is confident that previous operators completed work to standards considered acceptable for the time. As part of each resource upgrade, OBM will commit to additional drilling to confirm the style, widths and tenor of mineralisation at each deposit.</li> </ul>
<b>Geology</b>	<ul style="list-style-type: none"> <li><i>Deposit type, geological setting and style of mineralisation.</i></li> </ul>	<ul style="list-style-type: none"> <li><b>Regional Geology</b> - Rocks of the Coolgardie domain (Kalgoorlie Terrane) are prevalent in the Davyhurst area. Rocks of the Coolgardie Domain are not well exposed at Davyhurst and the distribution of rock types suggests that it is mainly represented by the upper part of the stratigraphic sequence, namely basalts, felsic volcanics and sedimentary rocks. The abundant ultramafic-mafic sills of the Ora Banda Domain do not occur in the Coolgardie Domain. Granitoids in the Davyhurst Project area can be classified by magnetic signature into three types: low, medium and high magnetic response. Binns et al. (1976) distinguished 'static style' and 'dynamic style' regional metamorphism. Static style areas generally occupy the central, low-strain part of the greenstone regions away from the granitoids and typically have lower metamorphic grades (prehnite-pumpellyite to upper greenschist facies). Strain is concentrated in narrow zones so that textures are well preserved in more massive and competent rocks. Dynamic-style areas of greenstone have higher metamorphic grades (upper greenschist to upper amphibolite facies) and are characterized by more pervasive foliation, particularly along the contacts with large granitoid terrains. There appears to be two major controls on mineralisation in the Davyhurst area. Both mineralisation styles rely on mineralisation taking place during reactivation of earlier ductile shear zones. In the case of the Lights of Israel group of deposits, the early shears are moderately to gently west dipping, whereas in the Federal Flag – Lady Eileen group of deposits, the early shear is steeply west dipping. In the northern portion of the Davyhurst tenements most gold mineralisation is aligned in planar corridors that have N- to NW-trends. The overall dip of the mineralised corridors is mostly steep (&gt;75°) E- or W-dipping with moderate to steep (~60°) and shallow-dipping (~15°) ore zones at the Federal Flag and Lady Gladys deposits, respectively. Within these planar corridors of mineralisation linear trends to gold distribution are mostly shallowly plunging. Internal variations within the corridors at individual deposits are common and discussed later. Mineralisation at the Lights of Israel and Makai deposits differs from the other examined deposits in that mineralisation has a linear form that plunges moderately (~20°) to the NNW.</li> <li><b>Local Geology</b> - The two major rock types within the Waihi deposit are: <ul style="list-style-type: none"> <li><b>Tremolite/Actinolite/Chlorite Amphibolite.</b> Weakly to strongly foliated, fine to medium grained rocks composed of tremolite/actinolite within a fibrous Mg chlorite matrix.</li> </ul> </li> </ul>

Criteria	JORC Code explanation	Commentary
		<ul style="list-style-type: none"> <li>○ <b>Fine Grained Basalt.</b> Massive to weakly foliated, very fine grained rock composed of actinolite and plagioclase (albite) with trace magnetite.</li> </ul> <p>Late stage lepidolite bearing pegmatite dykes striking 060° and dipping steeply 75° north cut across the stratigraphy at several places. A quartz felspar porphyry sub parallel to regional foliation has been mapped in the old Homeward Bound pit. Detailed mapping by ConsGold of the Waihi and Homeward Bound pits shows the area is dominated by a strong penetrative foliation striking 347° and dipping 75° to 80° west. A second weaker foliation striking 040° and dipping 75° north was also recognised in both pits. The intersection of these two foliations gives a lineation plunging approximately 70° towards 310°. Several post mineralisation faults striking approximately 070° and dipping north have been mapped or inferred from the drilling. The faults have only minor lateral displacement. Several of the faults are infilled by lepidolite pegmatite.</p> <p>Gold mineralisation at Waihi occurs with both altered tremolite schist and basalts. Generally gold mineralisation associated with the tremolite schist occurs in the vicinity of the old Waihi workings and in the east lode to the east of the old Homeward Bound pit. Mineralisation is characterised by multiple loads and broad alteration haloes. Mineralisation associated with the tremolite schist also appears to have a gentle northerly plunge approximately 40° towards 340°. To the north, in the more competent basalts mineralisation is confined to a single main lode within the shear system. Within the deposit there is a pervasive biotite alteration halo. Associated with gold mineralisation, biotite plus silica and quartz veining occur. Higher grade gold mineralisation is generally associated with extreme silica flooding and quartz veining which has destroyed the majority of the rock fabric. Diopside as an alteration mineral also occurs throughout the resource. Quartz veining sub parallel to, or cross cutting the regional fabric also occurs within the deposit. These veins are discontinuous and can form boudins with the ore zone. Grade distribution within these blobs is erratic (Lennartz, 1988). Controls on ore shoots within the resource are not well understood at this stage. From the data available there appears to be a major zone of mineralisation plunging north from the south end of the Waihi pit. From the old stope plans of the Waihi Shaft, it would appear that the higher grade mineralisation has a steeply dipping lensoidal shape, with occasional glory holes, which WMC inferred were fold hinges. Around the Homeward Bound and east lode areas the higher grade mineralisation appears to have a 30° plunge to the north. Pyrrhotite, pyrite and arsenopyrite are the dominant sulphides within the resource. Trace to accessory concentrations of chalcocopyrite, pentlandite, gesdoritite, and bismuth have been recognised.</p>
<b>Drill hole Information</b>	<ul style="list-style-type: none"> <li>• A summary of all information material to the understanding of the exploration results including a tabulation of the following information for all Material drill holes: <ul style="list-style-type: none"> <li>○ easting and northing of the drill hole collar</li> <li>○ elevation or RL (Reduced Level – elevation above sea level in metres) of the drill hole collar</li> <li>○ dip and azimuth of the hole</li> <li>○ down hole length and interception depth</li> <li>○ hole length.</li> </ul> </li> <li>• If the exclusion of this information is justified on the basis that the information is not Material and this exclusion does not detract from the understanding of the report, the Competent Person should clearly explain why this is the case.</li> </ul>	<ul style="list-style-type: none"> <li>• See Significant Intercepts in Appendix 1 for details</li> <li>• Widths reported in the Significant Intercepts table are all down hole lengths.</li> </ul>
<b>Data aggregation methods</b>	<ul style="list-style-type: none"> <li>• In reporting Exploration Results, weighting averaging techniques, maximum and/or minimum grade truncations (eg cutting of high grades) and cut-off grades are usually Material and should be stated.</li> <li>• Where aggregate intercepts incorporate short lengths of</li> </ul>	<ul style="list-style-type: none"> <li>• Original assays are length weighted. Grades are not top cut. Lower cut off is nominally 1g/t. Maximum 2m internal dilution.</li> <li>• No metal equivalents reported.</li> </ul>

Criteria	JORC Code explanation	Commentary
	<p>high grade results and longer lengths of low grade results, the procedure used for such aggregation should be stated and some typical examples of such aggregations should be shown in detail.</p> <ul style="list-style-type: none"> <li>The assumptions used for any reporting of metal equivalent values should be clearly stated.</li> </ul>	
<b>Relationship between mineralisation widths and intercept lengths</b>	<ul style="list-style-type: none"> <li>These relationships are particularly important in the reporting of Exploration Results.</li> <li>If the geometry of the mineralisation with respect to the drill hole angle is known, its nature should be reported.</li> <li>If it is not known and only the down hole lengths are reported, there should be a clear statement to this effect (eg 'down hole length, true width not known').</li> </ul>	<ul style="list-style-type: none"> <li>All intercept widths reported are down hole lengths. No attempt has been made here to report true widths.</li> </ul>
<b>Diagrams</b>	<ul style="list-style-type: none"> <li>Appropriate maps and sections (with scales) and tabulations of intercepts should be included for any significant discovery being reported. These should include, but not be limited to a plan view of drill hole collar locations and appropriate sectional views.</li> </ul>	<ul style="list-style-type: none"> <li>See plans and sections</li> </ul>
<b>Balanced reporting</b>	<ul style="list-style-type: none"> <li>Where comprehensive reporting of all Exploration Results is not practicable, representative reporting of both low and high grades and/or widths should be practiced to avoid misleading reporting of Exploration Results.</li> </ul>	<ul style="list-style-type: none"> <li>Results reported include both low and high gram metre (g/t x down hole length) values.</li> <li>The significant intercept table provides details of drill hole intercepts shown on diagrams. There is no lower cut-off grade, the holes listed ranging from NSI (no significant intercept) to 553.8 gram metres. Holes in the significant intercept table are shown on diagrams coloured according to gram metre grade bins. This provides spatial context to the number of holes in the project area with significant gold intercepts versus the number of holes with lesser or no significant intercepts.</li> </ul>
<b>Other substantive exploration data</b>	<ul style="list-style-type: none"> <li>Other exploration data, if meaningful and material, should be reported including (but not limited to): geological observations; geophysical survey results; geochemical survey results; bulk samples – size and method of treatment; metallurgical test results; bulk density, groundwater, geotechnical and rock characteristics; potential deleterious or contaminating substances.</li> </ul>	<ul style="list-style-type: none"> <li>Metallurgical and geotechnical work has been completed for numerous previously mined deposits, including Waihi.</li> <li>Waihi deposit was previously mined and processed at Davyhurst plant with no known metallurgical issues.</li> <li>Ongoing geological/ structural evaluation to determine the controls on mineralisation.</li> </ul>
<b>Further work</b>	<ul style="list-style-type: none"> <li>The nature and scale of planned further work (eg tests for lateral extensions or depth extensions or large-scale step-out drilling).</li> <li>Diagrams clearly highlighting the areas of possible extensions, including the main geological interpretations and future drilling areas, provided this information is not commercially sensitive.</li> </ul>	<ul style="list-style-type: none"> <li>Data evaluation and geological assessment of all deposits, including Waihi, followed by additional resource drilling and updated JORC 2012 compliant Mineral Resources.</li> <li>Regional exploration targeting for new green-fields deposits.</li> </ul>