



QUARTERLY ACTIVITIES REPORT TO 30 Sept 2019

Peninsula Mines Limited (“Peninsula” or “the Company”) has a long-term vision for strategically linking upstream flake graphite supply and downstream graphite processing in the Korean peninsula’s battery industry.

Highlights

-  Peninsula announced in July that a **merger** was underway to combine its South Korean graphite projects with those of Battery Mineral Resources Limited (BMR). Negotiations remain on-going with BMR with regard to the conclusion of the agreement. ^{D1}
-  During the Quarter, PSM secured Korean Resources Corporation (**KORES**) drill funding to enable diamond drilling of three holes for 340m, to confirm the interpreted synformal structure. The results of the drill program are included below. ^{D3}
-  Field work continues through channel sampling and metallurgical analysis.

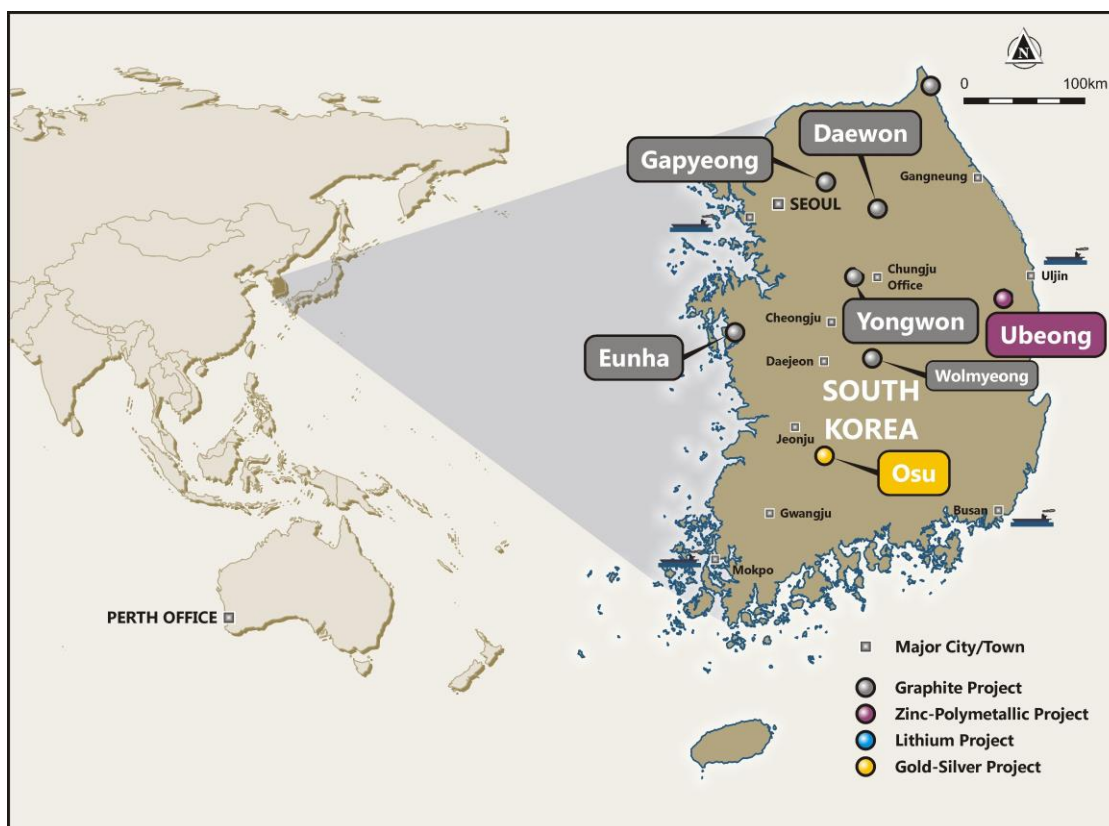


Figure 1: Peninsula Mines’ South Korean Project Locations

Graphite Business Development

During the Quarter, Peninsula announced the merger of its wholly owned Korean subsidiary, Korean Graphite Company Limited (KGCL), with the Korean branch of Battery Mineral Resources Limited (BMRK)

to form a new company, 45% PSM and 55% BMR owned. This will enable both companies to maximise their strategic advantage, applying Peninsula's operational expertise to BMRK's more advanced project. ^{D1} Changes to the corporate management within BMR has led to unforeseen delays in completing the merger, however, the process is continuing.

Flake Graphite Projects

KGCL flake graphite projects, namely Gapyeong, Yongwon and Daewon, continue to be progressed on the following basis:



Each project has flake graphitic units mapped over a strike of more than 1km and approximately 10m wide



Metallurgical and petrographic analysis confirmed the suitability of the flake graphite for spherical graphite production



Each has undergone detailed ground electromagnetic (EM) surveys and trenching.

Exploration targets have been defined for Gapyeong, Yongwon and Eunha Projects, with resource diamond drilling having so far been conducted at Gapyeong (Q3, 2019) and Eunha (Q3, 2018). Drilling access negotiations continue for Daewon and Yongwon.

Gapyeong Flake Graphite Project

Peninsula's Gapyeong Project, located 50km east of Seoul, includes flake-graphite mineralised marble units defined by ground electromagnetic (EM) surveys, surface mapping and sampling, as well as diamond drilling and trenching.

During the quarter, 3 further drill holes were drilled to test the southern extent of the Gapyeong structure at 4180500mN, 4180430mN and 4180370mN. Drilling on the northern two sections has identified two deeper graphitic horizons. These included intercepts of 1.98m (1.8m true width (TW)) at 4.1% TGC from hole GPD0007 and 2.95m (2.0m TW) at 9.8 TGC% & 2.55m (1.8m TW) at 5.9% TGC from hole GPD0008. The significant intercepts are summarised in Table 1 and a full list of assays and a summary of the geology and hole location details are contained in the appendices. The drilling confirmed the northerly plunge to the Gapyeong synform with the keel of the main graphite horizon daylighting just south of the southernmost trench on 4180400mN section.

The drill programme was supported by KORES who provided direct funding towards the cost of the drilling and met approximately 50% of the overall cost of the drill programme. All three holes were extended beyond their original planned depth with a total 397m of drilling completed.

The southernmost hole on section 4180370mN passed below the keel of the interpreted synform and failed to intersect any graphite mineralisation.

The 2019 drill programme was designed to test the southern extent of the Gapyeong structure and to identify the depth extent of the main synformal fold structure that was previously sampled in the 2018 surface trenching programme^{D2,3}.

The graphite mineralisation occurs within a skarnified limestone sequence. In both holes, a number of faults were observed that have disrupted the easterly dipping graphite horizons and have caused a series of fault repeats of the two deeper graphitic horizons (see cross sections Figures 2 & 3).

Graphite mineralisation has now been confirmed by drilling and surface trenching between sections 4180400mN and 4180760mN. Additional outcrops have recently been identified further to the north on and south of section 4181130mN. These outcrops lie on the company's adjacent Gapyeong 124-4 tenement where the graphite structure is offset to the east across the southwest-northeast trending Geumdaeri Fault (Figure 1). The Gapyeong Graphite Project is located 50km east of Seoul in South Korea (Figure 1, inset, for location).

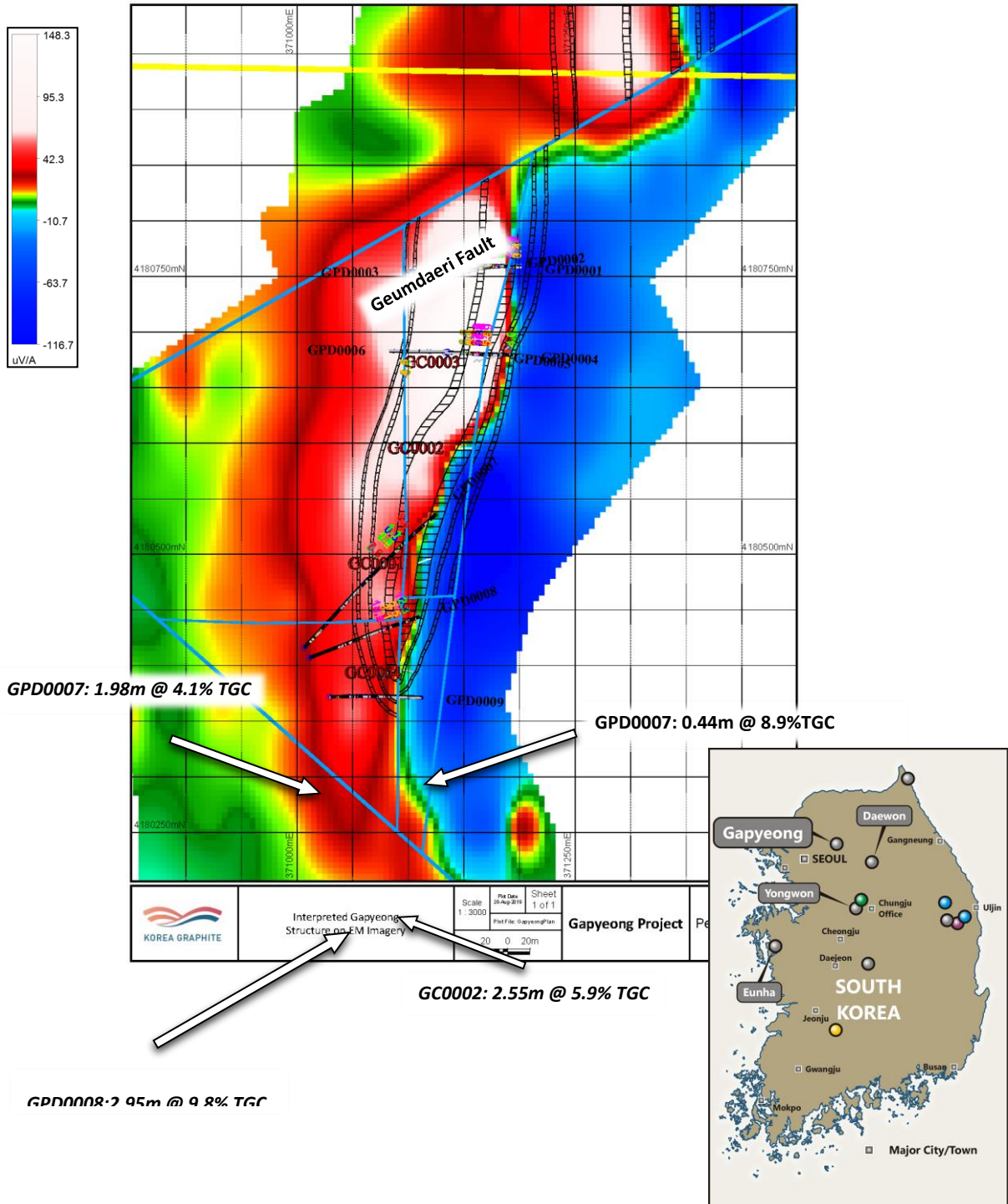


Figure 1: Gapyeong drill hole locations and results, trench locations and intersections on EM imagery

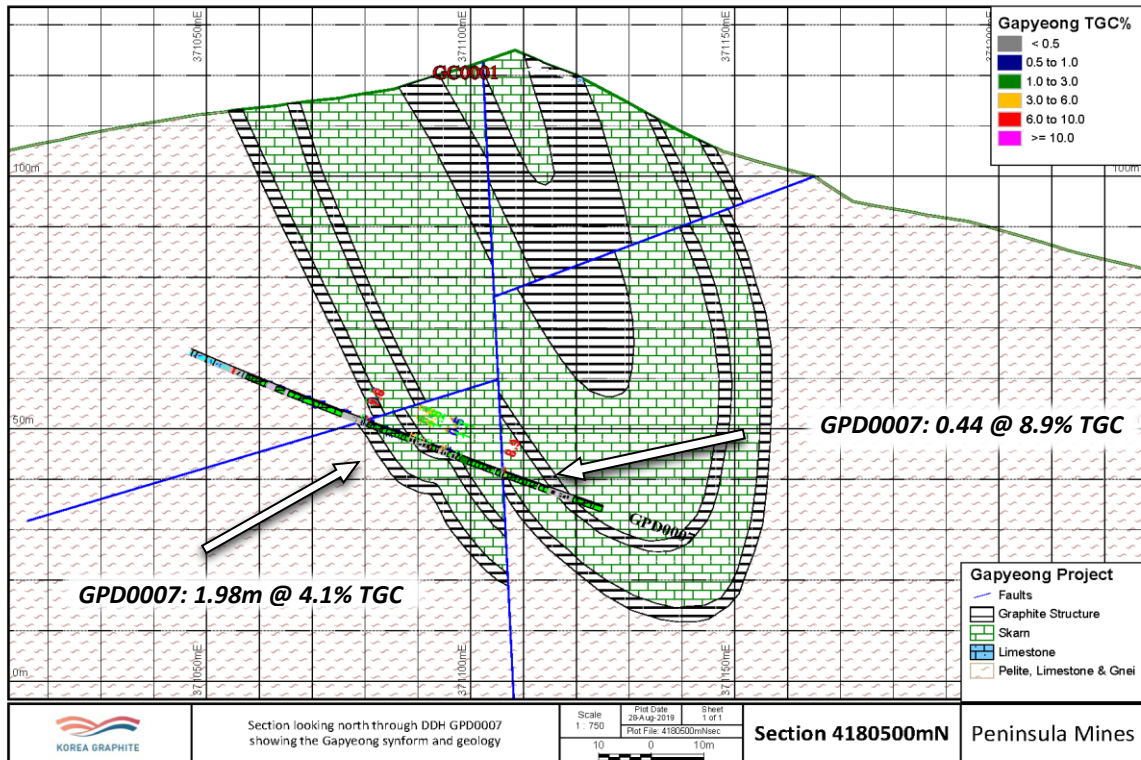


Figure 2: Gapyeong cross section 4,180,500mN showing drilling intersections & interpreted synformal graphitic units

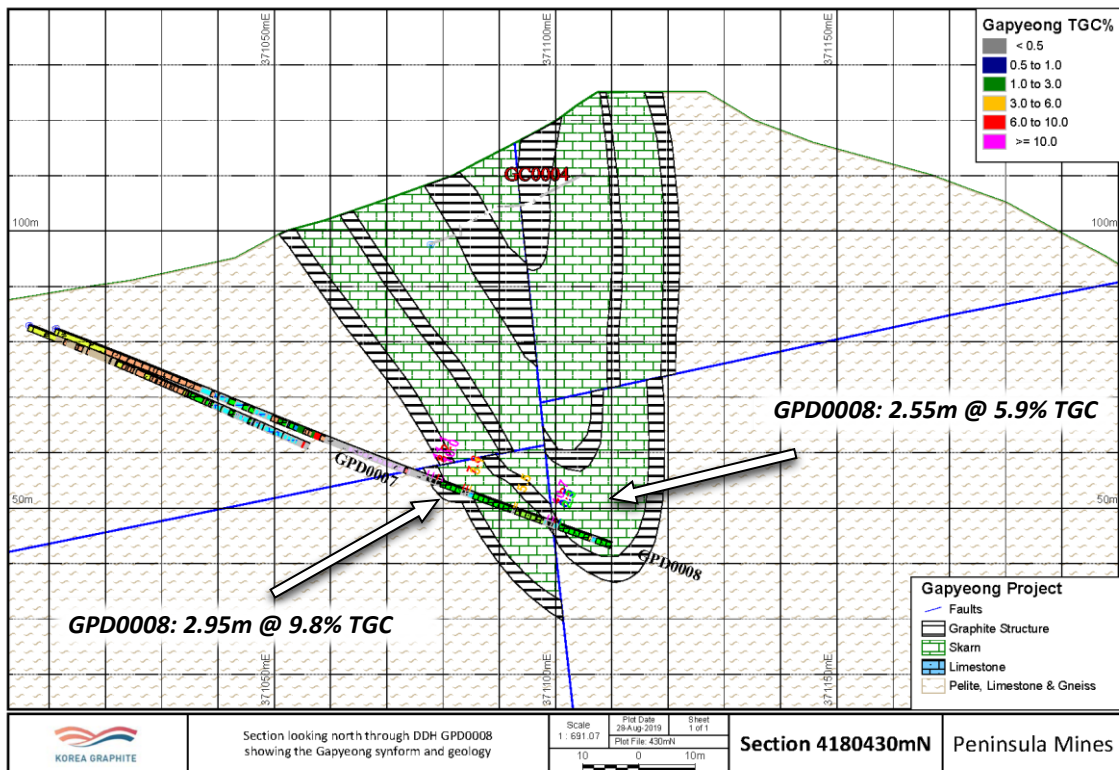


Figure 3: Gapyeong cross section 4,180,430mN showing drilling intersections & interpreted synformal graphitic units

Table 1: Gapyeong drilling intersections

Hole Number	From (m)	To (m)	Interval	True Width	TC%	S%	TIC%	TGC%	TOC%
GPD0007	110.38	112.36	1.98	1.8	5.9	2.2	1.3	4.1	0.5
including	111.22	112.36	1.14	1	7.0	3.3	0.9	5.7	0.4
GPD0007	123.77	129.27	5.5	2.2	6.3	0.3	3.4	2.3	0.3
GPD0007	132.45	137.8	5.35	2.2	7.4	0.4	5.6	1.4	0.4
GPD0007	149.11	149.55	0.44	0.3	10.0	5.6	0.7	8.9	0.4
GPD0008	75.48	78.43	2.95	2	10.3	4.7	0.5	9.8	0.3
GPD0008	82.62	83.93	1.31	1.2	8.2	3.7	2.3	5.5	0.4
GPD0008	92.74	93.165	0.43	0.3	8	4.8	1.9	5.5	0.7
GPD0008	99.42	101.97	2.55	1.8	7.7	4.9	1.3	5.9	0.5

Eunha Flake Graphite Project

No further work was undertaken during the quarter

Daewon and Yongwon Flake Graphite Projects

Drill access arrangements are still under negotiation. Again, further work is planned.

Wolmyeong Graphite Project

The Wolmyeong amorphous graphite deposit, formerly the largest graphite mine in Korea, has significant potential to supply the Korean steel industry. A more detailed review of the Wolmyeong project and its potential is underway.

Ubeong Zinc-Lead-Copper Project

Historically mined, mineralised skarn near the active Keumho Zinc-Lead Mine had seen no systematic, modern exploration prior to Peninsula securing the Project. Peninsula's work has included detailed mapping, ground magnetic surveys, induced polarisation (IP), systematic soil sampling and diamond drilling to define exploration targets.

The compiled results, including historic Korea Mineral Promotion Corporation (KMPC now KORES) drill intercepts of **7.0m (4.0m TW) @ 14.58% Zn, 1.37% Pb and 2.12% Cu** from Ilweol in the Project's south. The high-grade base metal mineralisation is associated with pyrrhotite and these high-grade zones appear as magnetic highs along the northwest-southeast trending locally skarnified Ilweol structure. Peninsula is seeking a JV partner to advance the Ubeong Project while the company focuses on its core graphite business. ^{D4}

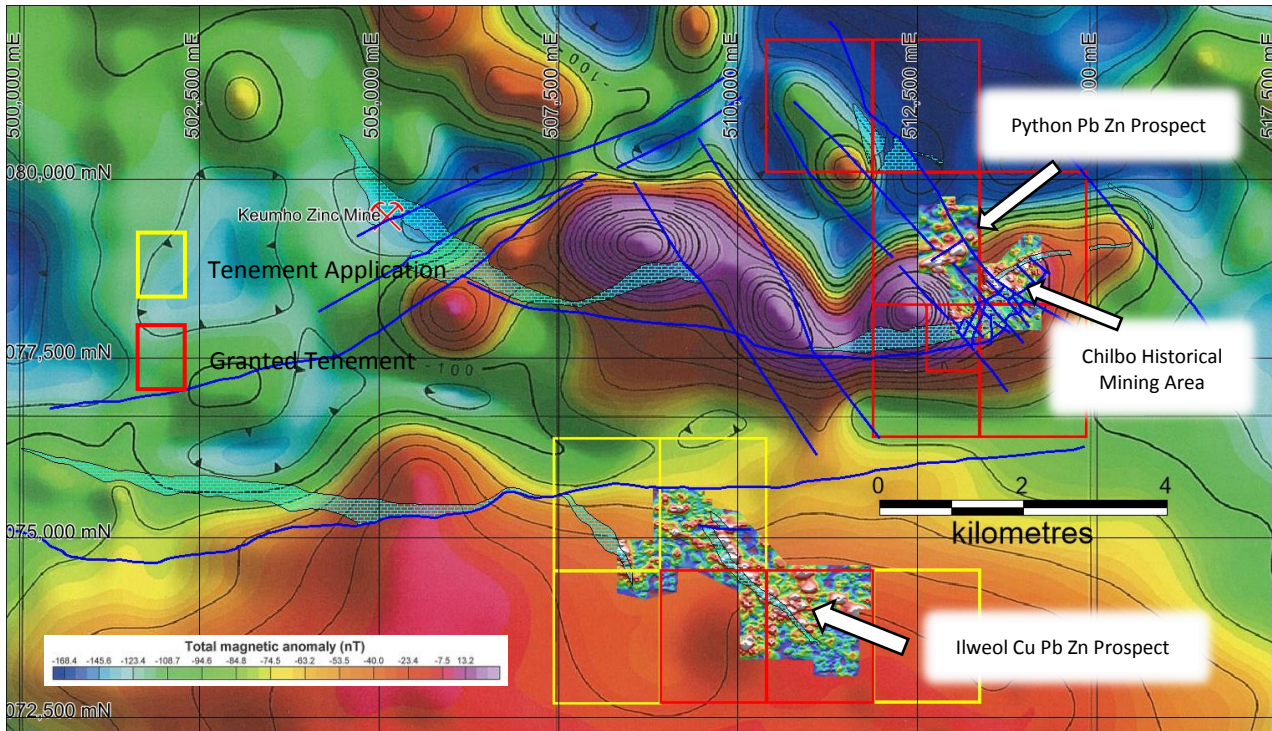


Figure 3: Ubeong Project TMI detailed ground magnetics imagery over TMI regional aeromagnetics, mapped skarn-limestone and structural geology, tenements, and rock chip and soil sampling^{D4}

Osu Gold Project

A number of historical underground mines on the flanks of Mount Palgong historically exploited a mineralised zone over 1.2km strike. Peninsula has secured the ground and conducted diamond drilling below the historical workings (completed Q4 2018) and trenching across the 30m wide surface expression of mineralised sheet veining. This work has confirmed the continuity of the high-grade gold-silver mineralisation both at surface and at depth. The Company is looking to farm out the Project to further develop this exciting gold-silver play with potential porphyry at depth.

Corporate

Peninsula’s operating expenditure during the Quarter was \$474k, including approximately 55% exploration and development costs. Administration costs included a significant component devoted to capital raising activities.

The company retained \$171k cash at bank at the end of the year with no debt.

For further information please contact:

Richard Henning

Managing Director, Peninsula Mines Ltd (ASX:PSM)

Level 2, 20 Kings Park Rd. West Perth, WA, 6005

E: rhanning@peninsulamines.com.au

Ph: +61 8 6143 1840

Summary list of all previous Peninsula ASX releases referenced in this report:

- D1 Peninsula in Merger Agreement with Battery Mineral Resources, 13 July 2019
- D2 Peninsula Secures KORES Support for Drilling Programme at Gapyeong Graphite Project, 8 May 2019
- D3 Graphite Intersections from Gapyeong Drilling, 30 August 2019

For full versions of the Company's releases see Peninsula's website www.peninsulamines.com.au

Forward Looking Statements

This report contains certain forward-looking statements. These forward-looking statements are not historical facts but rather are based on Peninsula Mines Ltd.'s current expectations, estimates and projections about the industry in which Peninsula Mines Ltd operates, and beliefs and assumptions regarding Peninsula Mines Ltd.'s future performance. Words such as "anticipates", "expects", "intends", "plans", "believes", "seeks", "estimates" "potential" and similar expressions are intended to identify forward-looking statements. These statements are not guarantees of future performance and are subject to known and unknown risks, uncertainties and other factors, some of which are beyond the control of Peninsula Mines Ltd, are difficult to predict and could cause actual results to differ materially from those expressed or forecasted in the forward-looking statements. Peninsula Mines Ltd cautions shareholders and prospective shareholders not to place undue reliance on these forward-looking statements, which reflect the view of Peninsula Mines Ltd only as of the date of this report. The forward-looking statements made in this report relate only to events as of the date on which the statements are made. Peninsula Mines Ltd does not undertake any obligation to report publicly any revisions or updates to these forward-looking statements to reflect events, circumstances or unanticipated events occurring after the date of this report except as required by law or by any appropriate regulatory authority.

Competent Persons Statements

The information in this report that relates to Exploration Results, Mineral Resources or Ore Reserves is based on information compiled by Mr Daniel Noonan, a Member of the Australian Institute of Mining and Metallurgy. Mr Noonan is an Executive Director of the Company.

Mr Noonan has sufficient experience which is relevant to the style of mineralisation and type of deposit under consideration and to the activity which he is undertaking to qualify as a Competent Person as defined in the 2012 Edition of the 'Australasian Code for Reporting of Exploration Results, Mineral Resources and Ore Reserves'. Mr Noonan consents to the inclusion in the report of the matters based on this information in the form and context in which it appears.

The information in this release that relates to Geophysical Results and Interpretations is based on information compiled by Karen Gilgallon, Principal Geophysicist at Southern Geoscience Consultants. Karen Gilgallon is a Member of the Australasian Institute of Geoscientists (AIG) and has sufficient experience which is relevant to the style of mineralisation and type of deposit under consideration and to the activity which he is undertaking to qualify as a Competent Person as defined in the 2012 Edition of the 'Australasian Code for Reporting of Exploration Results, Mineral Resources and Ore Reserves'. Karen Gilgallon has previously consented to the inclusion in the release of the matters based on this information in the form and context in which it appears.

MINERAL TENEMENT INFORMATION as at 30 June 2019

SMCL – PSM subsidiary, Suyeon Mining Company Limited

SOUTH KOREA

KGCL – PSM subsidiary, Korea Graphite Company Limited

Deposit	Mine Land Ledger No.	Mining Right No.	PSM Holding %	*Grant/Application Date	Title Expiry	Notes
Granted Tenements						
Daewon	Yangdeokwon50-2	200917	100%	24-July-2017	12-Sep-24	SMCL was granted the title on 13 Sep 2017. On 18 June 2018 this year the Company transferred the title to KGCL. The Company has up to 6 years to complete the minimum exploration requirements and define a Mineral Resource** at the Daewon Project.
Eunha	Hongseong106-2	201098	100%	30-Nov-2018	30-Nov-2025	SMCL was granted an Exploration Right over this block on the 10 October 2018 and completed the final steps on the tenement registration process on 30 November 2018. The Company is in the process of transferring the tenement to KGCL.
Eunha	Hongseong97-4	201101	100%	11-Dec-2018	10-Dec-2025	SMCL was granted an Exploration Right over this block on the 10 October 2018 and completed the final steps on the tenement registration process on 30 November 2018. The Company is in the process of transferring the tenement to KGCL.
Eunha	Hongseong107-1	201010	100%	15-May-2018	14-May-25	SMCL was granted an Exploration Right over this block on the 15 May 2018. On the 18 June 2018 the Company transferred the tenement to KGCL. The Company lodged a Prospecting Plan on 30 May 2018 and has until 29 May 2021 to lodge a drilling report confirming that the Company has completed at least 50% of the required prospecting works. The Company can then be granted a further 3 years to complete the minimum required drilling work and define a Mineral Resource**.
Eunha	Hongseong107-2	201010	100%	15-May-2018	14-May-25	SMCL was granted an Exploration Right over this block on the 15 May 2018. On the 18 June 2018 the Company transferred the tenement to KGCL. The Company lodged a Prospecting Plan on 30 May 2018 and has until 29 May 2021 to lodge a drilling report confirming that at least 50% of the required prospecting works were complete. The Company can then be granted a further 3 years to complete the minimum required drilling work and define a Mineral Resource**.
Gapyeong	Gapyeong 125-3	201038	100%	26-July-2018	25-July-2025	SMCL was granted an Exploration Right over this block on the 26 July 2018. On the 5 September 2018 the Company transferred the tenement to KGCL. The Company has

Deposit	Mine Land Ledger No.	Mining Right No.	PSM Holding %	*Grant/Application Date	Title Expiry	Notes
						to lodge a Prospecting Plan by 25 July 2019. The Company will then have 3 years to lodge a drilling report confirming that at least 50% of the required prospecting works were completed in order to be granted a further 3 years**.
Gapyeong	Gapyeong 124-4	201099	100%	25-November-2018	30-Nov-2025	SMCL was granted an Exploration Right over this block on the 1 October 2018 and completed the final steps on the tenement registration process on 25 November 2018. The Company is in the process of transferring the tenement to KGCL.
Ilweol	Dogyedong 72	200954	100%	24-November-2017	23-November-2024	SMCL was granted an Exploration Right over this block on the 24 November 2017. The Company has until 23 November 2018 to file a Prospecting Plan with the Local Government Office for the grant of a 6-year period for exploration over the title block.
Ilweol	Dogyedong 82	200998	100%	16-March-2018	15-March-2025	SMCL was granted an Exploration Right over this block on the 16 March 2018. The Company has until 15 March 2019 to file a Prospecting Plan with the Local Government Office for the grant of a 6-year period for exploration over the title block.
Palgong & Baegun	Osu 23	200471	100%	17-Dec-14	14-Dec-21	Granted to SMCL on the 17 December 2014. Exploring Plan lodged with the Ministry of Trade Industry and Economics 15 December 2015. SMCL has until 5 th December 2018 to complete 50% of proposed drilling work and file a report to obtain a 3-year extension of the title.
Ubeong	Hyeondong 59	200861	100%	26-April-2017	25-April-24	SMCL was granted the title on 26 April 2017. The Company has filed a prospecting plan and must complete 50% of the required exploration works by 7 March 2021 to apply for a further 3-year extension.
Ubeong	Hyeondong 60	200862	100%	26-April-2017	25-April-24	SMCL was granted the title on 26 April 2017. The Company has filed a prospecting plan and must complete 50% of the required exploration works by 7 March 2021 to apply for a further 3-year extension.
Ubeong	Hyeondong 69	200863	100%	26-April-2017	25-April-24	SMCL was granted the title on 26 April 2017. The Company has filed a prospecting plan and must complete 50% of the required exploration works by 7 March 2021 to apply for a further 3-year extension.
Ubeong	Hyeondong 70	200940	100%	25-August-2017	24-Aug-24	SMCL was notified of the Ministry's intention to grant an Exploration Right over this block for Zn, Pb & Ag exploration on the 25 August 2017. The Company has filed a prospecting plan and must complete 50% of the required exploration works by 11 August 2021 to apply for a further 3-year extension.

Deposit	Mine Land Ledger No.	Mining Right No.	PSM Holding %	*Grant/Application Date	Title Expiry	Notes
Ubeong	Hyeondong 70-1	200969	100%	30-December-2017	29-Dec-2024	The Company filed a Prospecting Plan on 29 Dec 2018. The company will have up to 6 years to complete the required mineral exploration work and define a Limestone Mineral Resource over this sub-block.
Ubeong	Hyeondong 68	201052	100%	7-August-2018	6-Aug-2025	SMCL has until 6 August 2019 to file a Prospecting Plan. The company will then have up to 6 years to complete the required mineral exploration work and define a Limestone Mineral Resource over this sub-block.
Ubeong	Hyeondong 78	200941	100%	25-August-2017	24-Aug-2024	SMCL was notified of the Ministry's intention to grant an Exploration Right over this block for Zn, Pb & Ag exploration on the 25 August 2017. The Company has filed a prospecting plan and must complete 50% of the required exploration works by 11 August 2021 to apply for a further 3-year extension.
Wolmyeong	Cheongsan 69-2	200812	100%	20-Dec-17	19-Dec-2023	SMCL was granted an Exploration Right over this sub-block for graphite exploration on the 20 December 2016. On the 18 June 2018 the Company transferred the tenement to KGCL. The Company successfully filed a prospecting report on 8 December 2017. The Company must complete 50% of the required exploration works by 7 December 2020 to apply for a further 3-year extension.
Wolmyeong	Cheongsan 69-4	200812	100%	20-Dec-17	19-Dec-23	SMCL was granted an Exploration Right over this sub-block for graphite exploration on the 20 December 2016. On the 18 June 2018 the Company transferred the tenement to KGCL. The Company successfully filed a prospecting report on 8 December 2017. The Company must complete 50% of the required exploration works by 7 December 2020 to apply for a further 3-year extension.
Wolmyeong	Cheongsan 79-2	200813	100%	20-Dec-17	19-Dec-23	SMCL was granted an Exploration Right over this sub-block for graphite exploration on the 20 December 2016. On the 18 June 2018 the Company transferred the tenement to KGCL. The Company successfully filed a prospecting report on 8 December 2017. The Company must complete 50% of the required exploration works by 7 December 2020 in order to apply for a further 3-year extension.
Wolmyeong	Cheongsan 79-4	200813	100%	20-Dec-17	19-Dec-23	SMCL was granted an Exploration Right over this sub-block for graphite exploration on the 20 December 2016. On the 18 June 2018 the Company transferred the tenement to KGCL. The Company successfully filed a prospecting report on 8 December 2017. The Company must complete 50% of the required exploration works by 7 December 2020 in order to apply for a further 3-year extension.

Deposit	Mine Land Ledger No.	Mining Right No.	PSM Holding %	*Grant/Application Date	Title Expiry	Notes
Wolmyeong	Cheongsan 89-1	200814	100%	20-Dec-17	19-Dec-23	SMCL was granted an Exploration Right over this sub-block for graphite exploration on the 20 December 2016. On the 18 June 2018 the Company transferred the tenement to KGCL. The Company filed a prospecting report on 8 December 2017. The Company must complete 50% of the required exploration works by 7 December 2020 to apply for a further 3-year extension.
Yongwon	Eumseong 32-1	200811	100%	20-Dec-17	19-Dec-23	SMCL was granted an Exploration Right over this sub-block for graphite exploration on 20 December 2016. On the 18 June 2018 the Company transferred the tenement to KGCL. The Company filed a prospecting report on 27 September 2017. The Company must complete 50% of the required exploration works by 26 September 2020 in order to apply for a further 3-year extension.

Tenement Applications						
Deposit	Mine Land Ledger No.	Mining Right No.	PSM Holding %	*Grant/Application Date	Title Expiry	Notes
Daewon	Yangdeokwon 50-1	00530	100%	6-Mar-19	5-Sep-19	KGCL must lodge Mineral Deposit Survey (MDS) prior to expiry date to extend the tenement life up to additional 7 years
Daewon	Yangdeokwon 40	00529	100%	6-Mar-19	5-Sep-19	KGCL must lodge Mineral Deposit Survey (MDS) prior to expiry date to extend the tenement life up to additional 7 years
Gapyeong	Gapyeong125	01337	100%	21-Jun-19	20-Dec-19	KGCL must lodge Mineral Deposit Survey (MDS) prior to expiry date to extend the tenement life up to additional 7 years
Goseon North	Seobyeok 60	01330	100%	21-Jun-19	20-Dec-19	SMCL must Lodge Mineral Deposit Survey (MDS) prior to the expiry to extend
Goseong	Ganseong 23	01334	100%	21-Jun-19	20-Dec-19	KGCL must lodge Mineral Deposit Survey (MDS) prior to expiry date to extend the tenement life up to additional 7 years
Goseong	Ganseong 24	01336	100%	21-Jun-19	20-Dec-19	KGCL must lodge Mineral Deposit Survey (MDS) prior to expiry date to extend the tenement life up to additional 7 years
Ilweol	Dogyedong 62	01331	100%	21-Jun-19	20-Dec-19	SMCL must Lodge Mineral Deposit Survey (MDS) prior to the expiry to extend
Ilweol	Dogyedong 81	4197	100%			Mineral Deposit Survey (MDS) lodged with MRO inspection and title grant pending
Ilweol	Dogyedong 91	01332	100%	21-Jun-19	20-Dec-19	SMCL must Lodge Mineral Deposit Survey (MDS) prior to the expiry to extend
Ilweol	Dogyedong 92	01333	100%	21-Jun-19	20-Dec-19	SMCL must Lodge Mineral Deposit Survey (MDS) prior to the expiry to extend
*For all tenement applications, SMCL must lodge a Mineral Deposit Survey (MDS) prior to the expiry date to facilitate the grant of an exploration permit for up to 7 years.						
** The Mineral Resource required under the terms of the Korean Mineral Law need not be JORC compliant.						

Appendix 5B

Mining exploration entity and oil and gas exploration entity quarterly report

Introduced 01/07/96 Origin Appendix 8 Amended 01/07/97, 01/07/98, 30/09/01, 01/06/10, 17/12/10, 01/05/13, 01/09/16

Name of entity

PENINSULA MINES LTD

ABN

56 123 102 974

Quarter ended ("current quarter")

30 SEPTEMBER 2019

Consolidated statement of cash flows	Current quarter \$A'000	Year to date (3 months) \$A'000
1. Cash flows from operating activities		
1.1 Receipts from customers		
1.2 Payments for		
(a) exploration & evaluation	(262)	(262)
(b) development		
(c) production		
(d) staff costs*		
(e) administration and corporate costs	(247)	(247)
1.3 Dividends received (see note 3)		
1.4 Interest received	1	1
1.5 Interest and other costs of finance paid		
1.6 Income taxes paid		
1.7 Research and development refunds	-	-
1.8 Other (provide details if material) *	34	34
1.9 Net cash from / (used in) operating activities	(474)	(474)

The company's accounting policy allocates staff costs to activities and are accordingly included in items 1.2 (a) and 1.2 (e).
*Funding of drilling by KORES

2. Cash flows from investing activities

2.1 Payments to acquire:

- (a) property, plant and equipment
- (b) tenements (see item 10)

Consolidated statement of cash flows	Current quarter \$A'000	Year to date (3 months) \$A'000
(c) investments		
(d) other non-current assets		
2.2 Proceeds from the disposal of:		
(a) property, plant and equipment		
(b) tenements (see item 10)		
(c) investments		
(d) other non-current assets		
2.3 Cash flows from loans to other entities		
2.4 Dividends received (see note 3)		
2.5 Other (provide details if material)*		
2.6 Net cash from / (used in) investing activities	-	-

173. Cash flows from financing activities		
3.1 Proceeds from issues of shares		
3.2 Proceeds from issue of convertible notes		
3.3 Proceeds from exercise of share options		
3.4 Transaction costs related to issues of shares, convertible notes or options	(4)	(4)
3.5 Proceeds from borrowings		
3.6 Repayment of borrowings		
3.7 Transaction costs related to loans and borrowings		
3.8 Dividends paid		
3.9 Other (provide details if material)		
3.10 Net cash from / (used in) financing activities	(4)	(4)

4. Net increase / (decrease) in cash and cash equivalents for the period		
4.1 Cash and cash equivalents at beginning of period	649	649
4.2 Net cash from / (used in) operating activities (item 1.9 above)	(474)	(474)
4.3 Net cash from / (used in) investing activities (item 2.6 above)	-	-
4.4 Net cash from / (used in) financing activities (item 3.10 above)	(4)	(4)

Consolidated statement of cash flows		Current quarter \$A'000	Year to date (3 months) \$A'000
4.5	Effect of movement in exchange rates on cash held	-	-
4.6	Cash and cash equivalents at end of period	171	171

5.	Reconciliation of cash and cash equivalents at the end of the quarter (as shown in the consolidated statement of cash flows) to the related items in the accounts	Current quarter \$A'000	Previous quarter \$A'000
5.1	Bank balances	171	349
5.2	Call deposits	-	300
5.3	Bank overdrafts		
5.4	Other (provide details)		
5.5	Cash and cash equivalents at end of quarter (should equal item 4.6 above)	171	649

6.	Payments to directors of the entity and their associates	Current quarter \$A'000
6.1	Aggregate amount of payments to these parties included in item 1.2	87
6.2	Aggregate amount of cash flow from loans to these parties included in item 2.3	-
6.3	Include below any explanation necessary to understand the transactions included in items 6.1 and 6.2	

--

7.	Payments to related entities of the entity and their associates	Current quarter \$A'000
7.1	Aggregate amount of payments to these parties included in item 1.2	-
7.2	Aggregate amount of cash flow from loans to these parties included in item 2.3	-
7.3	Include below any explanation necessary to understand the transactions included in items 7.1 and 7.2	

--

Mining exploration entity and oil and gas exploration entity quarterly report

8. Financing facilities available <i>Add notes as necessary for an understanding of the position</i>	Total facility amount at quarter end \$A'000	Amount drawn at quarter end \$A'000
8.1 Loan facilities		
8.2 Credit standby arrangements		
8.3 Other (please specify)		
8.4 Include below a description of each facility above, including the lender, interest rate and whether it is secured or unsecured. If any additional facilities have been entered into or are proposed to be entered into after quarter end, include details of those facilities as well.		

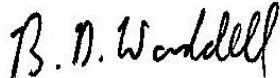
--

9. Estimated cash outflows for next quarter	\$A'000
9.1 Exploration and evaluation	95
9.2 Development	
9.3 Production	
9.4 Staff costs	
9.5 Administration and corporate costs	145
9.6 Other (provide details if material)	
9.7 Total estimated cash outflows	240

10. Changes in tenements (items 2.1(b) and 2.2(b) above)	Tenement reference and location	Nature of interest	Interest at beginning of quarter	Interest end of quarter
10.1 Interests in mining tenements and petroleum tenements lapsed, relinquished or reduced				
10.2 Interests in mining tenements and petroleum tenements acquired or increased				

Compliance statement

- 1 This statement has been prepared in accordance with accounting standards and policies which comply with Listing Rule 19.11A.
- 2 This statement gives a true and fair view of the matters disclosed.



Sign here:

(Company secretary)

Date: 31 October 2019

Print name: Bruce Waddell

Notes

1. The quarterly report provides a basis for informing the market how the entity's activities have been financed for the past quarter and the effect on its cash position. An entity that wishes to disclose additional information is encouraged to do so, in a note or notes included in or attached to this report.
2. If this quarterly report has been prepared in accordance with Australian Accounting Standards, the definitions in, and provisions of, AASB 6: Exploration for and Evaluation of Mineral Resources and AASB 107: Statement of Cash Flows apply to this report. If this quarterly report has been prepared in accordance with other accounting standards agreed by ASX pursuant to Listing Rule 19.11A, the corresponding equivalent standards apply to this report.
3. Dividends received may be classified either as cash flows from operating activities or cash flows from investing activities, depending on the accounting policy of the entity.