

QUARTERLY ACTIVITIES REPORT

For the quarter ended 30 September 2019

Metals Australia Ltd (ASX: MLS and Company) is pleased to report its activities for the quarter ended 30 September 2019.

OVERVIEW

During the quarter, the Company received the balance of the assay results from its maiden diamond drilling program at the Lac Rainy Graphite Project, located in Quebec, Canada. The drilling program was designed to test the down dip / plunge depth extensions of the high-grade surface mineralisation identified by the trenching and channel sampling campaign completed during the 2018 field season at Lac Rainy.

The drilling initially focused on the known high-grade Lac Carheil Prospect which is at the southeast end of the mineralised trend as well as step out drilling along strike in a north-west direction. Seventeen (17) diamond drill holes were completed for a total of 2,318m with the drilling program finishing on 17 May 2019. The program was highly successful with a total of eleven (11) holes from the seventeen drill hole program finishing in mineralisation that is open at depth. Graphite flake mineralisation was intersected in all drill holes with DDH 19 intersecting the main Carheil Graphitic Zone over a significant width of 70 metres (in apparent width) at a depth from 9.0 metres to 79.9 metres.

Drill results include:

DDH LR19-01	42.7m at 14.5% Cg from 75.85m
DDHLR19-09	70.0m at 17.1% Cg from 9.0m
DDH LR19-11	44.9m at 8.05% Cg from 63.6m
DDH LR19-08	47.5m at 16.21% Cg from 7.8m

The surface mineralised trend at Lac Rainy at this point in time has been mapped for in excess of 3.2 km along strike in a north-west direction and remains open along strike. The recently completed drilling program tested approximately 1.6km of this mineralised strike at the southeast end of the trend.

During the upcoming quarter, the Company plans to complete its detailed drill core metallurgical and product specification test work, which will enable the Company to engage further with potential end-users and joint development partners across North America and Europe. In addition, the Company plans to complete the estimation of the maiden JORC (2012) resource at Lac Rainy.

During the quarter, the Company acquired the Eade-Pontois-Felicie Gold Projects in Quebec, Canada. The Eade Gold Project is split into two domains, West Eade contains a **12km strike length** with at least two gold prospects (**rock chip samples up to 11.45g/t Au**) which have not been followed up with modern exploration techniques. East Eade contains a **7km strike length** with at least two gold prospects (**rock chip samples up to 12.0g/t Au**) which have not been followed up with modern exploration techniques and borders the Azimut Exploration Inc. (TSX.V: AZM) and SOQUEM owned Masta 2-Corvette Project. The Pontois Gold Project contains a rock sample which returned an assay result of **7.3 g/t Au** which has not been followed up with modern exploration techniques.

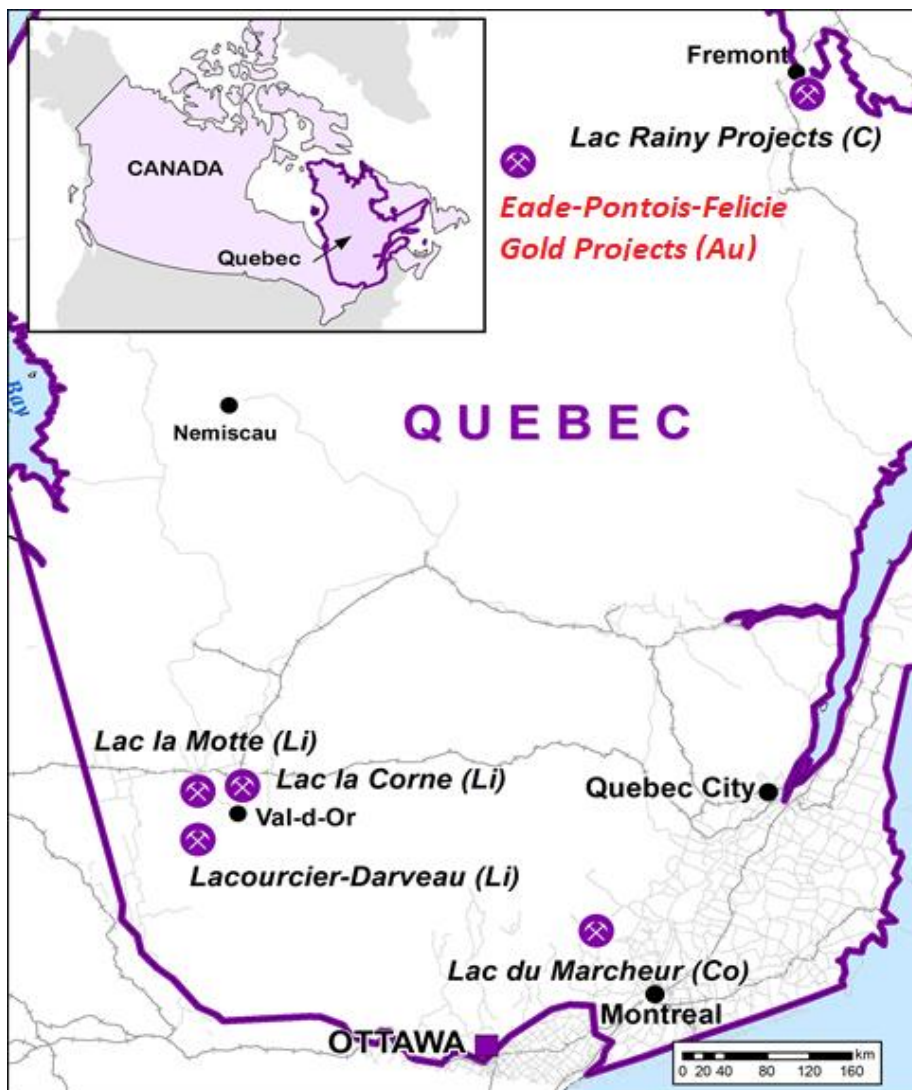
The Felicie Gold Project contains a rock sample which returned an assay result of **5.54g/t Au + 1.86% Cu + 4.94% Zn** with a second rock sample collected in another area which returned over **10g/t Au** which has not been followed up with modern exploration techniques.

GRAPHITE, COBALT, LITHIUM AND GOLD PROJECTS IN QUEBEC, CANADA

The Company, through its wholly owned subsidiary Quebec Lithium Limited (QLL), owns a 100% interest in the following exploration projects, located in Quebec, Canada (Figure 1):

- Lac Rainy Graphite Project
- Lac du Marcheur Copper-Cobalt Project
- Lac La Motte Lithium Project
- Lac La Corne Lithium Project
- Lacourciere-Darveau Lithium Project
- Eade-Pontois-Felicie Gold Projects

Figure 1: Location map of projects in Quebec, Canada



LAC RAINY GRAPHITE PROJECT, QUEBEC (100% OWNED)

The Lac Rainy Graphite Project consists of a contiguous landholding of 88 mineral claims covering an area of approximately 45.5 km² located 22 km south-west of the historic mining town of Fermont in one of the premier graphite mining regions of Quebec. The Lac Rainy Graphite Project is approximately 15 km east of Route 389, a paved highway that links the Project with major ports along the St. Lawrence River.

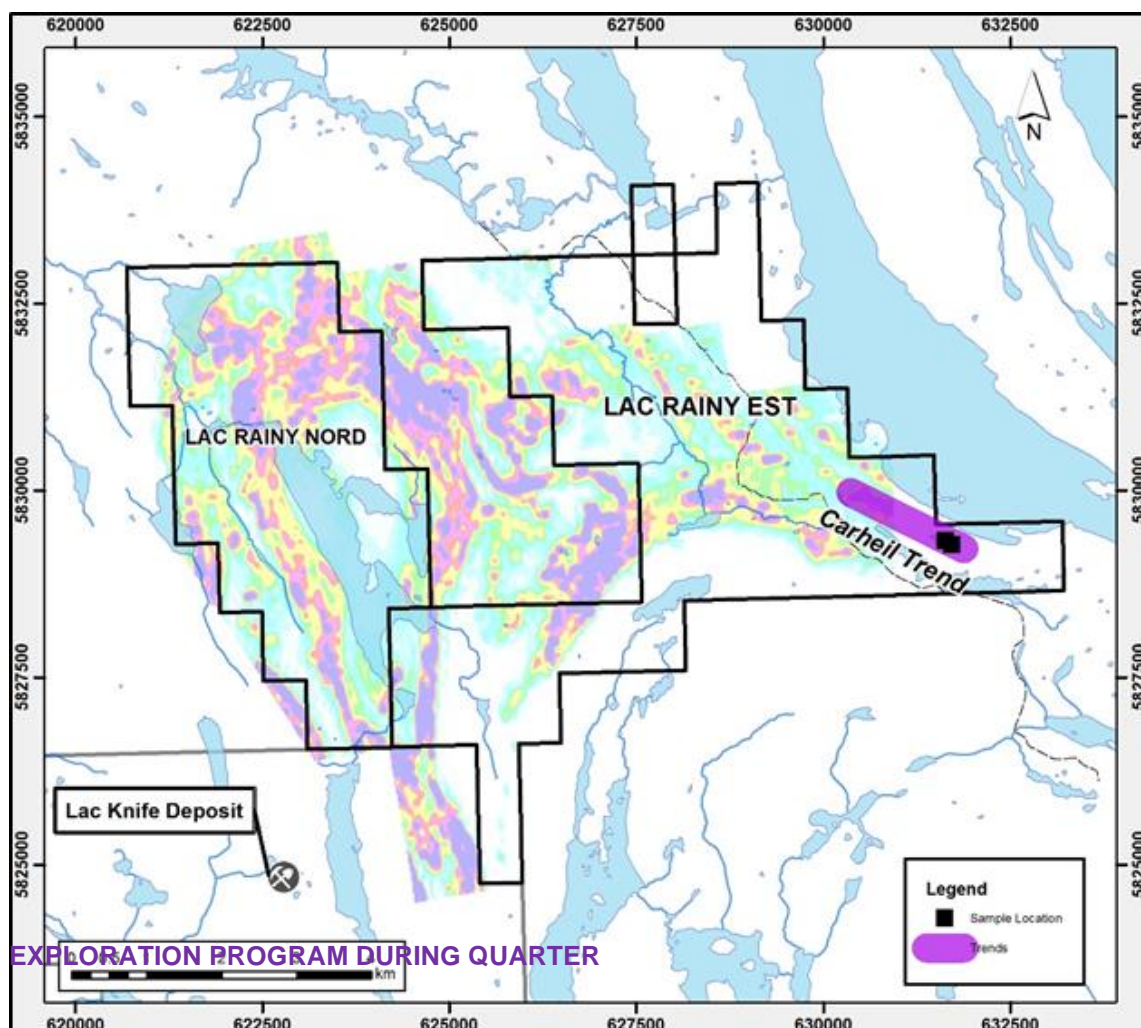
GEOLOGY AND MINERALISATION

Within the Lac Rainy Graphite Project, the graphite is hosted in biotite-quartz-feldspar paragneiss and schist of the Nault Formation. High-grade metamorphism and folding has resulted in the formation of important concentrations of graphite dominated by value-enhanced large flakes.

The Project is located adjacent to the Lac Knife Property, which hosts the Lac Knife Graphite Deposit owned by Focus Graphite Inc. (less than 4 km south-west of the Project) that has a Measured and Indicated Resource of 13.6 Mt @ 14.95% Cg and an Inferred Resource of 0.8 Mt @ 13.90% Cg at a 3.0% Cg cut-off (*refer to Focus Graphite TSX-V market announcement dated 6 March 2017*).

The high-grade Lac Carheil Prospect is located at the southeast corner of the Lac Rainy project area. The Carheil trend extends from southeast to northwest across the Lac Rainy Project tenement package. Graphite mineralisation has been mapped for 3.2 km in a northeast direction. High-grade graphite samples at Lac Carheil include 35.49% Cg and 40.67% Cg. The close proximity of numerous high-grade graphitic carbon results at nearby occurrences highlights the strong potential for further graphite mineralisation to be identified at the Lac Rainy Graphite Project (Figure 2).

Figure 2: Claim boundaries for the Lac Rainy Nord and Lac Rainy Est Graphite Project overlaid with the results of the recent airborne geophysical program



During the quarter, the Company received the balance of the assay results from its maiden diamond drilling program at the Lac Rainy Graphite Project, located in Quebec, Canada.

The drilling program was designed to test the down dip / plunge depth extensions of the high-grade surface mineralisation identified by the trenching and channel sampling campaign completed during the 2018 field season at Lac Rainy.

The drilling initially focused on the known high-grade Lac Carheil Prospect which is at the southeast end of the mineralised trend as well as step out drilling along strike in a north-west direction. Seventeen (17) diamond drill holes were completed for a total of 2,318m with the drilling program finishing on 17 May 2019. The program was highly successful with a total of eleven (11) holes from the seventeen drill hole program finishing in mineralisation that is open at depth. Graphite flake mineralisation was intersected in all drill holes with DDH 19 intersecting the main Carheil Graphitic Zone over a significant width of 70 metres (in apparent width) at a depth from 9.0 metres to 79.9 metres.

The mineralised trend at Lac Rainy has been mapped in excess of 3.2 km along strike in a northwest direction and remains open. The recently completed drilling program tested approximately 1.6km of this strike extent.

Discussion of Assay Results

During the quarter, the Company received the assay results for each of the seventeen (17) diamond drill holes completed at Lac Rainy as part of the maiden diamond drilling program.

Significant assay results received from the diamond drilling program include (*refer to ASX announcements dated 3 July 2019, 6 August 2019, 15 August 2019, 20 August 2019, 29 August 2019, 11 September 2019*):

- DDH LR19-01 intersected multiple zones of graphite, including:
 - **42.7m at an average grade of 14.5% Cg** at a depth from 75.85m to 118.55m
 - **8.8m at an average grade of 17.8% Cg** at a depth from 123.5m to 132.3m
 - graphite mineralisation remains open at depth
- DDH LR19-02 intersected multiple zones of graphite, including:
 - **33.3m at an average grade of 19.9% Cg** at a depth from 65.7m to 99.0m (end of hole) – graphite mineralisation remains open at depth
- DDH LR19-03 intersected multiple zones of graphite, including:
 - **20.6m at an average grade of 11.88% Cg** at a depth from 47.6m to 71.2m
 - **22.85m at an average grade of 13.5% Cg** at a depth from 88.15m to 111.0m (end of hole) – graphite mineralisation remains open at depth
- DDH LR19-05 intersected four (4) zones of mineralisation resulting in a cumulative graphite mineralised interval of 70.95m:
 - **30.0m at an average grade of 8.24% Cg** at depth from 10.50m to 40.50m
 - **16.45m at an average grade of 6.41% Cg** at a depth from 54.0m to 72.10m
 - **3.0m at an average grade of 9.66% Cg** at a depth from 78.90m to 81.90m
 - **21.5m at an average grade of 16.24% Cg** at a depth from 98.50m to 120.0m
- DDH LR19-06 intersected three (3) zones of graphite mineralisation resulting in a cumulative graphite mineralised interval of 38.36m:
 - **3.46m at an average grade of 5.79% Cg** at a depth of 4.90m to 8.36m

- **28.40m at an average grade of 15.89% Cg** at a depth of 30.50m to 58.90m
- **6.50m at an average grade of 14.64% Cg** at a depth of 74.50m to 81.0m
- DDH LR19-09 intersected multiple zones of graphite, including:
 - **70.0m at an average grade of 17.1% Cg** at a depth from 9.0m to 79.0m
- DDH LR19-10 intersected multiple zones of graphite, including:
 - **25.5m at an average grade of 13.2% Cg** at a depth from 45.0m to 70.5m
 - **62.6m at an average grade of 14.0% Cg** at a depth from 119.4m to 182.0m – **graphite mineralisation remains open at depth**

The map below illustrates the drill hole locations from the program at the Lac Carheil prospect within the Lac Rainy Project (*Figure 3*).

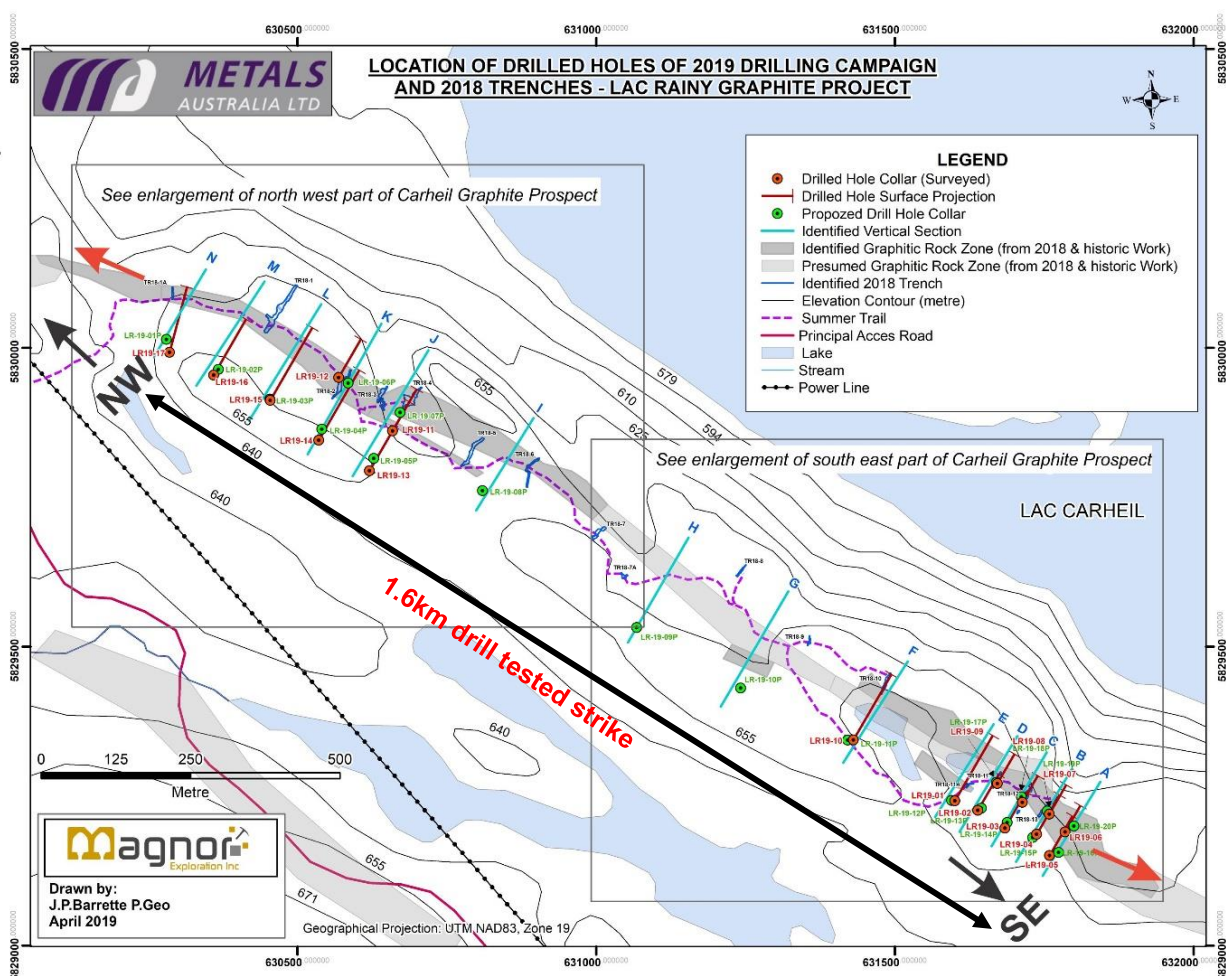


Figure 3: Diamond drill hole location map from the Phase II exploration program at the Lac Rainy Graphite Project

The southeast part of the Carheil Graphitic Trend, where the thickest and highest-grade graphite mineralisation has been encountered, is outlined in the map below.

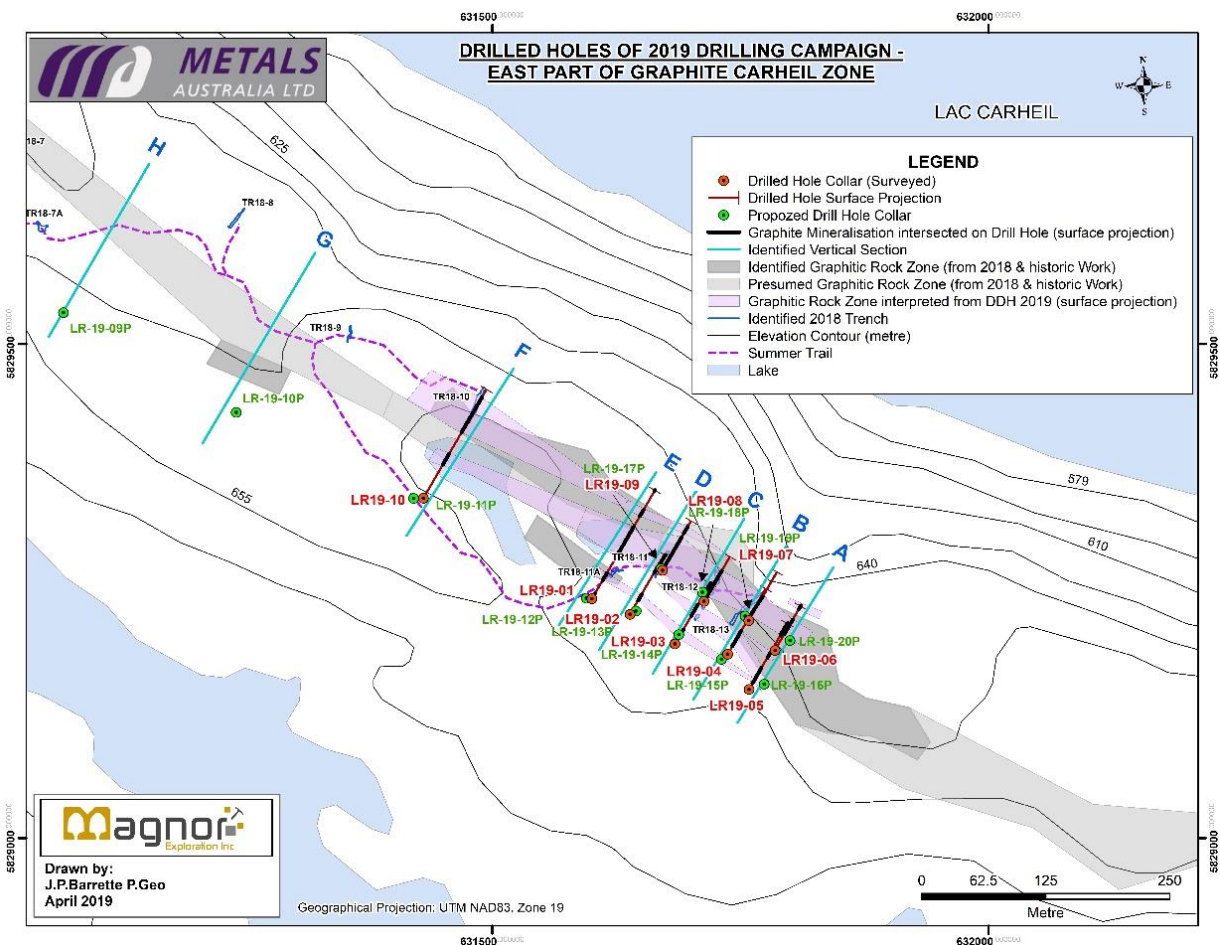


Figure 4: Diamond drill hole location map for the East part of the Carheil Graphitic trend at the Lac Rainy Graphite Project

The **Graphitic Carheil Zone** has been successfully intersected in all drill holes, with DDH LR19-10 intersecting the **Upper Branch of the Graphitic Carheil Zone** over a width of 25.5m at an average grade of 13.2% Cg from 45.0m to 70.5m.

In addition, DDH LR19-10 intersected the **Lower Branch of the Graphitic Carheil Zone** over a width of 62.6m at an average grade of 14.0% Cg from 119.4m to 182.0m with a possible continuation of the graphite mineralisation at depth.

The assay results from the drilling campaign have highlighted the extensive width and continuity of the high-grade graphite mineralisation at Lac Rainy. Importantly, the mineralisation at Lac Rainy appears to be consistent in terms of the Cg grade exhibited.

Trenching and drilling has identified a southeast and northwest extension of the known high-grade Carheil Zone. **Adding the new northwest and southeast extensions, including historic high-grade Cg occurrences and the trenching, sampling, mapping and drilling results completed by the Company, the Carheil Zone has a potential economic envelope of 3.2 km in length by 10m to 45m in width.**

The identification of the Carheil East Zone, which was identified during the 2018 trenching campaign, potentially represents a second major parallel structure that is host to high-grade graphite.

This is a significant finding as this area was previously obscured by shallow cover. Discoveries such as this demonstrate that the Company has only just started to “scratch the surface” in terms of realising the true potential of the Lac Rainy project.

In addition to the above, a significant number of additional targets remain untested at Lac Rainy Project which will be followed-up in subsequent exploration campaigns.

Detailed Metallurgical Testwork Program

The Company has engaged SGS Canada Inc. (SGS) as the laboratory to undertake the program of metallurgical and mineralogical test work, given their involvement in the testing program completed at the neighbouring Lac Knife Graphite Project, owned by Focus Graphite Inc.

This work is expected to be completed during the quarter ended 31 December 2019.

End User / Project Development Partner Engagement

The Company is focusing on the North American end user market and North American project development partners.

The Company has been collaborating with a specialist North American downstream graphite / graphene product manufacturer and marketing agent in relation to the Lac Rainy graphite project. The group is awaiting the results of the metallurgical test work to enable it to target the most appropriate end users for the product/s the Company intends to produce.

Maiden JORC Resource Estimate

The Company has engaged GoldMinds Geoservices to complete the JORC (2012) maiden resource estimate for Lac Rainy. This work is expected to be completed during the quarter ended 31 December 2019.

Work Planned for the Upcoming Quarter

During the upcoming quarter, the Company will complete its next stage of metallurgical and mineralogical test work with the aim of identifying product specifications for the Lac Rainy graphite concentrate. It will also undertake preliminary test work on the suitability of Lac Rainy graphite concentrate to produce a high-grade graphene and test work to determine the suitability of the concentrate to feed into other high-end technological applications of graphite, including thermal shields and expandable graphite.

These results are viewed as necessary in order to advance the Company's engagement with potential North American and European end-user groups. The Company has identified an expert group in the United States which can offer the Company assistance and testing pathways for the Lac Rainy graphite concentrate to meet the various markets.

In addition, the Company will progress with the estimate of the JORC (2012) resource estimate at Lac Rainy.

EADE-PONTOIS-FELICIE GOLD PROJECTS, QUEBEC (100% OWNED)

During the quarter, the Company entered into a legally binding acquisition agreement to acquire a portfolio of gold exploration projects located in the Lac Guyer greenstone belt of northern-Quebec (Canada), an east-west trending greenstone belt which is host to numerous high-grade gold-copper and base metal discoveries.

The projects are located approximately 120km northeast of the Eleonore Gold Mine which is owned and operated by Goldcorp, and are located in close proximity to the Trans-Taiga Highway. This provides excellent all-year road access to the projects. Due to the proximity of the Eade-Pontois-Felicie Gold Projects to the Lac Rainy Graphite Project, the Company believes that it will be able to engage the same team to oversee the exploration at these new project areas.

Geologically, the projects are located in the northeast sector of the Superior Province and straddle the boundary of the La Grande and Opinaca geological sub-provinces. Together, the projects include approximately 20km of an eastwest trending volcano-sedimentary belt.

The greenstone sequence is variable, containing basalt, ultramafic, felsic volcanics and sediments. This provides rheological contrasts that can cause strain partitioning and focusing of gold bearing fluids. The projects are also close to the margin of a granite which has controlled regional scale eastwest shearing.

The greenstone belt contains multiple gold occurrences that indicate prospectivity for gold mineralisation. This is supported by the reported widespread distribution of low-grade sulphide mineralisation (possibly due to alteration) at the Felicie Gold Project. Gold occurrences are aligned in an eastwest direction along the main regional shear zones to the north and south of the granite.

The map below illustrates the project location in a regional setting showing the regional geology and structures. Also highlighted are the rock sample assay results for the relevant prospects and the infrastructure in the area.

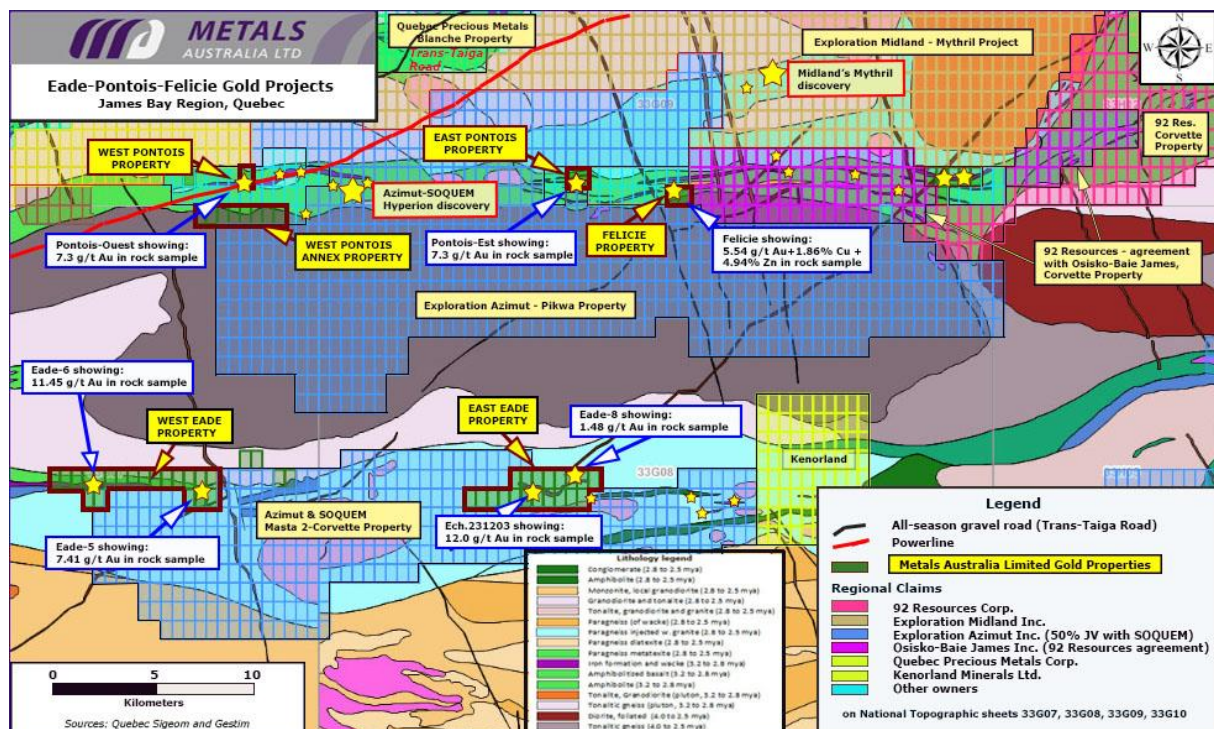


Figure 5: Regional geology map of the Eade-Pontois-Felicie Gold Projects located in Quebec, Canada. Sample site locations are contained within the map above with the use of a star highlighting the location of the sample and a text box highlighting the assay results of the particular sample.

GOLD PROJECT SUMMARY OVERVIEW

The Eade Gold Project, Pontois Gold Project and the Felicie Gold Project are all located in close proximity to each other on the Lac Gruyer greenstone belt of northern-Quebec, Canada.

Eade Gold Project

The Eade Gold Project is located approximately 120km east of Radisson, 20km south of the Poste Lemoyne heliport and 50km east of the La Grande-3 airport, with access via the (all season) Trans-Taiga highway. The Eade project is considered to be a highly prospective gold-copper-silver project made up of two distinct domains, West Eade and East Eade, and are located 12km apart on the same copper-gold-silver mineralised geological trend.

The map below outlines the location of the East Eade and West Eade project areas overlaid by the regional magnetic data. The map also highlights the known gold occurrences on the project areas as well as the neighbouring project areas:

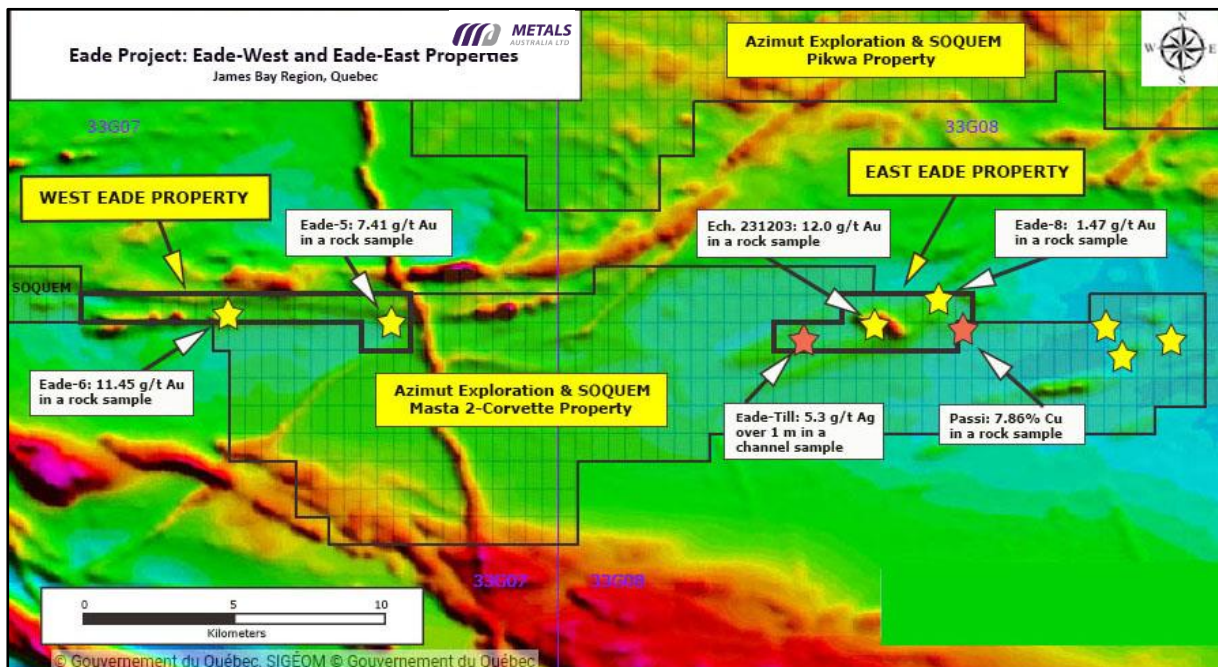


Figure 6: East Eade and West Eade project areas location map overlaid by the regional magnetic data. Sample site locations are contained within the map above with the use of a star highlighting the location of the sample and a text box highlighting the assay results of the particular sample.

The East Eade and West Eade project areas include 20km of an eastwest trending volcano-sedimentary belt. The geological setting is characterised by sheared metasediments, amphibolites, paragneisses and small felsic intrusions.

The West Eade project area contains a **12km strike length** and covers two gold occurrences: Eade-5 and Eade 6. At Eade-5 rock chips have returned values up to **7.41g/t Au** in iron formation within a sulphidic shear. Approximately 6km along strike to the west at Eade-6, rock chip samples of iron formation returned results up to **11.45g/t Au**.

The East Eade project area contains a **7km strike length** and covers three gold occurrences (Eade-8, Eade-Till, Ech.231203) and a copper occurrence (Passi). Rock chip samples at the Eade-8 occurrence returned values to **1.47g/t Au in a 2m wide shear zone**. To the west at Ech.231203 quartz veins in a shear zone returned a best result of **12.0g/t Au** and a **1m channel sample at Eade-Till returned a value of 5.3g/t Ag**.

These areas have not been followed up with modern exploration techniques.

East Eade also borders the Azimut Exploration Inc. (TSX.V: AZM) and SOQUEM owned Masta 2-Corvette Project (*the Passi Prospect - refer to Figure 6 above*).

Felicie Gold Project

The Felicie Gold Project is located in northern Quebec, approximately 280km east of the town of Radisson, 480km northeast of Matagami and 170km northeast of Goldcorp's Eleonore Gold Mine. The project is located approximately 15km south of the (east-west) Trans-Taiga highway. The project can be accessed either on foot or by ATV from the Trans-Taiga highway.

A historical surface rock grab sample taken from the Felicie prospect returned an assay result of **5.54 g/t Au + 1.86% Cu + 4.94% Zn**. A second rock sample was collected in another area which returned **over 10g/t Au**. These areas have not been followed up with modern exploration techniques.

Reconnaissance exploration commenced in the 1950s with exploration primarily comprised of geological mapping and prospecting. In the 1970s, Noranda conducted aeromagnetic and electromagnetic surveys. The most recent exploration was undertaken in 2005 when wide spaced traverses located widespread low grade sulphide mineralisation.

The project covers an east-west trending belt of basaltic rocks with relatively minor units of ultramafic and felsic rocks. Mapping to the west located narrow exhalative units within the volcanic sequence. The sequence is intruded by gabbro dykes and pegmatites.

Refer to Figure 5 for an overview of the regional geology of the Felicie Gold Project.

The gold occurrences also contain copper, zinc and molybdenum. Associated sulphides include pyrite, chalcopyrite, pyrrhotite and rare arsenopyrite. The gold commonly comprises veins and shears of quartz-carbonate in iron formations.

Pontois Gold Project

The Pontois Gold Project is located in northern Quebec, approximately 280km east of the town of Radisson, 480km northeast of Matagami and 170km northeast of Goldcorp's Eleonore Gold Mine. The project is located approximately 15km south of the (east-west) Trans-Taiga highway. The project can be accessed either on foot or by ATV from the Trans-Taiga highway.

A historical surface rock chip sample taken from the Pontois East showing returned an assay result **7.3g/t Au** whilst a rock chip sample taken from the Pontois West showing returned an assay result **3.35g/t Au**. These areas have not been followed up with modern exploration techniques.

The Pontois Gold Project is located in the same east-west trending volcano-sedimentary belt as the Felicie Gold Project. Mapping by Eloro Resources in 2005 reported mafic lavas (basalt) with some exhalative units. Sedimentary and felsic volcanic units are rare. The sequence is intruded by gabbro and pegmatite.

Refer to Figure 5 for an overview of the regional geology of the Pontois Gold Project.

Planned Work and Exploration Activities

The Eade, Pontois and Felicie Gold Projects are located in an area with good potential for the discovery of economic deposits of precious and base metals. There are indications of high-grade gold and silver mineralisation within all project areas, as well as in other showings in the surrounding area and in the general region.

The area was previously mapped and prospected by both government and private companies, therefore there is data already available for the projects, including geophysical maps (residual total magnetic field, first and second vertical derivative). This data can be used to build a preliminary GIS database prior to field work.

The focus of the Company will be on the Eade Gold Project where the Company believes that it can add value with low-cost exploration.

Exploration is planned to be completed systematically, comprising the following stages:

- Detailed compilation of previous exploration including a review of previous exploration reports, a search for geophysical data and creation of a GIS database;
- North-south traverses of geological mapping and rock chip sampling;
- Soil/till sampling of priority targets;
- Channel sampling; and
- Drill testing, if required.

- ENDS -

For further information please contact:

Martin Stein
Company Secretary
+61 8 9481 7833

Martin Bennett
Exploration Manager
+61 8 9481 7833

Or consult our website:

www.metalsaustralia.com.au

Competent Person Declaration

The information in this report that relates to Exploration Targets, Exploration Results, Mineral Resources or Ore Reserves is based on information compiled by Mr. Martin Bennett, a consultant to Metals Australia Ltd, and a member of The Australasian Institute of Mining and Metallurgy. Mr. Bennett has sufficient experience that is relevant to the style of mineralisation and type of deposit under consideration and to the activity that he is undertaking to qualify as a Competent Person as defined in the 2012 Edition of the "Australasian Code for Reporting of Exploration Results, Mineral Resource and Ore Reserves". Mr. Bennett consents to the inclusion in the report of the matters based on his information in the form and context in which it appears.

The Company confirms that it is not aware of any new information or data that materially affects the information included in the original market announcements. The Company confirms that the form and context in which the Competent Person's findings are presented have not been materially modified from the original market announcements.

Forward-Looking Statements

This document may include forward-looking statements. Forward-looking statements include, but are not limited to, statements concerning Metals Australia Ltd's planned exploration program and other statements that are not historical facts. When used in this document, the words such as "could," "plan," "estimate," "expect," "intend," "may", "potential," "should," and similar expressions are forward-looking statements. Although Metals Australia Ltd believes that its expectations reflected in these forward-looking statements are reasonable, such statements involve risks and uncertainties and no assurance can be given that actual results will be consistent with these forward-looking statements.

MINERAL AND EXPLORATION LICENCES

Country	State/ Region	Project	Tenement ID	Area km ²	Grant Date	Expiry Date	Interest %	Company
Australia	WA	Manindi	M57/227	4.64	3/09/1992	2/09/2034	80	Karrilea Holdings Pty Ltd
			M57/240	3.15	10/11/1993	9/11/2035	80	
			M57/533	8.01	17/01/2008	16/01/2029	80	
Australia	WA	Sherlock Bay	E47/1769	44.7	7/09/2009	6/09/2019*	4.5	Metals Australia Ltd
			E47/1770	134.3	7/09/2009	6/09/2019*	4.5	
			M47/567	10	7/09/2004	22/09/2025	4.5	

* The holder of the licenses applied on 30 August 2019 for a further two year extension of term for both E47/1769 and E47/1770. The applications for extension of term are currently being assessed.

Lac Rainy Graphite Project

Total Count	Claim number (CDC series)	Area (ha)	Grant Date	Expiry Date
1	2477073	52.35	2/02/2017	1/02/2021
2	2477074	52.35	2/02/2017	1/02/2021
3	2477075	52.35	2/02/2017	1/02/2021
4	2477076	52.34	2/02/2017	1/02/2021
5	2477077	52.34	2/02/2017	1/02/2021
6	2477078	52.30	2/02/2017	1/02/2021
7	2477079	52.30	2/02/2017	1/02/2021
8	2493128	52.34	24/05/2017	23/05/2021
9	2493129	52.30	24/05/2017	23/05/2021
10	2493130	52.30	24/05/2017	23/05/2021
11	2493131	52.30	24/05/2017	23/05/2021
12	2493132	52.30	24/05/2017	23/05/2021
13	2493133	52.29	24/05/2017	23/05/2021
14	2493134	52.29	24/05/2017	23/05/2021
15	2493135	52.31	24/05/2017	23/05/2021
16	2467343	52.33	31/10/2016	30/10/2020
17	2467344	52.33	31/10/2016	30/10/2020
18	2467345	52.32	31/10/2016	30/10/2020
19	2467346	52.32	31/10/2016	30/10/2020
20	2462752	52.36	19/09/2016	18/09/2020
21	2462753	52.36	19/09/2016	18/09/2020
22	2462754	52.35	19/09/2016	18/09/2020
23	2462755	52.35	19/09/2016	18/09/2020
24	2462756	52.35	19/09/2016	18/09/2020
25	2462757	52.34	19/09/2016	18/09/2020
26	2462758	52.34	19/09/2016	18/09/2020
27	2462759	52.34	19/09/2016	18/09/2020
28	2462760	52.34	19/09/2016	18/09/2020
29	2462761	52.34	19/09/2016	18/09/2020
30	2462762	52.33	19/09/2016	18/09/2020
31	2462763	52.33	19/09/2016	18/09/2020
32	2462764	52.33	19/09/2016	18/09/2020
33	2462765	52.33	19/09/2016	18/09/2020
34	2462766	52.33	19/09/2016	18/09/2020
35	2462767	52.33	19/09/2016	18/09/2020
36	2462768	52.32	19/09/2016	18/09/2020
37	2462769	52.32	19/09/2016	18/09/2020
38	2462770	52.32	19/09/2016	18/09/2020
39	2462771	52.32	19/09/2016	18/09/2020
40	2462772	52.32	19/09/2016	18/09/2020
41	2462773	52.31	19/09/2016	18/09/2020
42	2462774	52.31	19/09/2016	18/09/2020

Total Count	Claim number (CDC series)	Area (ha)	Grant Date	Expiry Date
43	2462775	52.31	19/09/2016	18/09/2020
44	2462776	52.31	19/09/2016	18/09/2020
45	2462777	52.31	19/09/2016	18/09/2020
46	2462778	52.31	19/09/2016	18/09/2020
47	2462779	52.30	19/09/2016	18/09/2020
48	2462780	52.30	19/09/2016	18/09/2020
49	2462781	52.30	19/09/2016	18/09/2020
50	2462782	52.30	19/09/2016	18/09/2020
51	2462783	52.30	19/09/2016	18/09/2020
52	2471082	52.38	16/12/2016	15/12/2020
53	2471083	52.37	16/12/2016	15/12/2020
54	2471084	52.36	16/12/2016	15/12/2020
55	2471085	52.36	16/12/2016	15/12/2020
56	2471086	52.36	16/12/2016	15/12/2020
57	2471087	52.36	16/12/2016	15/12/2020
58	2471088	52.35	16/12/2016	15/12/2020
59	2471089	52.35	16/12/2016	15/12/2020
60	2471090	52.35	16/12/2016	15/12/2020
61	2471091	52.35	16/12/2016	15/12/2020
62	2471092	52.34	16/12/2016	15/12/2020
63	2471093	52.34	16/12/2016	15/12/2020
64	2471094	52.34	16/12/2016	15/12/2020
65	2471095	52.34	16/12/2016	15/12/2020
66	2471096	52.33	16/12/2016	15/12/2020
67	2471097	52.33	16/12/2016	15/12/2020
68	2471098	52.33	16/12/2016	15/12/2020
69	2471099	52.33	16/12/2016	15/12/2020
70	2471100	52.32	16/12/2016	15/12/2020
71	2471101	52.32	16/12/2016	15/12/2020
72	2471102	52.32	16/12/2016	15/12/2020
73	2471103	52.32	16/12/2016	15/12/2020
74	2471104	52.31	16/12/2016	15/12/2020
75	2471105	52.31	16/12/2016	15/12/2020
76	2471106	52.31	16/12/2016	15/12/2020
77	2471107	52.31	16/12/2016	15/12/2020
78	2471108	52.31	16/12/2016	15/12/2020
79	2465815	52.30	13/10/2016	12/10/2020
80	2499090	35.22	2/08/2017	1/08/2021
81	2499091	45.67	2/08/2017	1/08/2021
82	2499092	25.58	2/08/2017	1/08/2021
83	2499356	52.35	7/08/2017	6/08/2021
84	2499357	52.35	7/08/2017	6/08/2021

Total Count	Claim number (CDC series)	Area (ha)	Grant Date	Expiry Date
85	2528299	52.35	29/11/2018	28/11/2020
86	2528300	52.35	29/11/2018	28/11/2020
87	2529282	52.35	14/12/2018	13/12/2020
88	2529504	52.35	09/01/2019	08/01/2021
89	2511046	52.32	01/02/2018	31/01/2022
90	2511047	52.31	01/02/2018	31/01/2022
91	2499377	52.34	07/08/2017	06/08/2021
92	2499378	52.35	07/08/2017	06/08/2021

Lac La Motte Lithium Project

Total Count	Claim number (CDC series)	Area (ha)	Date Granted	Date Expires
1	2438019	42.48	14/03/2016	13/03/2020
2	2438020	45.81	14/03/2016	13/03/2020
3	2455450	57.25	28/07/2016	27/07/2020
4	2455451	57.25	28/07/2016	27/07/2020
5	2455452	47.63	28/07/2016	27/07/2020
6	2455453	54.61	28/07/2016	27/07/2020
7	2455454	57.24	28/07/2016	27/07/2020
8	2455455	57.24	28/07/2016	27/07/2020

Total Count	Claim number (CDC series)	Area (ha)	Date Granted	Date Expires
9	2455456	57.24	28/07/2016	27/07/2020
10	2455457	57.23	28/07/2016	27/07/2020
11	2455458	57.23	28/07/2016	27/07/2020
12	2455459	33.56	28/07/2016	27/07/2020
13	2455460	41.19	28/07/2016	27/07/2020
14	2455461	22.73	28/07/2016	27/07/2020

Lac La Corne Lithium Project

Total Count	Claim number (CDC series)	Area (ha)	Grant Date	Expiry Date
1	2450086	57.28	20/06/2016	19/06/2020
2	2450087	57.28	20/06/2016	19/06/2020
3	2450088	57.27	20/06/2016	19/06/2020
4	2450089	57.26	20/06/2016	19/06/2020
5	2450090	57.26	20/06/2016	19/06/2020
6	2454427	57.28	25/07/2016	24/07/2020
7	2454428	57.28	25/07/2016	24/07/2020
8	2454429	57.27	25/07/2016	24/07/2020
9	2454430	57.26	25/07/2016	24/07/2020
10	2454431	57.26	25/07/2016	24/07/2020
11	2454432	57.25	25/07/2016	24/07/2020
12	2454433	57.25	25/07/2016	24/07/2020
13	2454434	57.25	25/07/2016	24/07/2020
14	2454435	57.25	25/07/2016	24/07/2020

Total Count	Claim number (CDC series)	Area (ha)	Grant Date	Expiry Date
15	2444218	57.27	5/05/2016	4/05/2020
16	2444219	57.27	5/05/2016	4/05/2020
17	2455213	57.31	28/07/2016	27/07/2020
18	2455214	57.30	28/07/2016	27/07/2020
19	2455215	57.30	28/07/2016	27/07/2020
20	2455216	57.29	28/07/2016	27/07/2020
21	2455217	57.29	28/07/2016	27/07/2020
22	2455218	57.29	28/07/2016	27/07/2020
23	2455219	57.27	28/07/2016	27/07/2020
24	2455220	57.26	28/07/2016	27/07/2020
25	2455221	57.26	28/07/2016	27/07/2020
26	2455222	57.26	28/07/2016	27/07/2020
27	2455223	57.25	28/07/2016	27/07/2020
28	2455224	57.25	28/07/2016	27/07/2020
29	2455225	57.25	28/07/2016	27/07/2020
30	2455226	57.24	28/07/2016	27/07/2020
31	2455227	57.24	28/07/2016	27/07/2020

Total Count	Claim number (CDC series)	Area (ha)	Grant Date	Expiry Date
32	2455228	57.24	28/07/2016	27/07/2020
33	2455229	57.24	28/07/2016	27/07/2020
34	2455230	57.23	28/07/2016	27/07/2020
35	2455231	57.23	28/07/2016	27/07/2020
36	2455232	57.23	28/07/2016	27/07/2020
37	2455233	57.28	28/07/2016	27/07/2020
38	2455235	57.27	28/07/2016	27/07/2020
39	2455236	57.25	28/07/2016	27/07/2020
40	2455237	57.21	28/07/2016	27/07/2020
41	2455238	57.21	28/07/2016	27/07/2020

Total Count	Claim number (CDC series)	Area (ha)	Grant Date	Expiry Date
42	2455239	57.20	28/07/2016	27/07/2020
43	2455240	57.29	28/07/2016	27/07/2020
44	2455241	57.29	28/07/2016	27/07/2020
45	2455242	57.29	28/07/2016	27/07/2020
46	2455277	57.25	28/07/2016	27/07/2020
47	2455280	57.22	28/07/2016	27/07/2020
48	2455281	57.22	28/07/2016	27/07/2020
49	2455282	57.22	28/07/2016	27/07/2020
50	2455283	57.22	28/07/2016	27/07/2020

Lacourciere-Daveau Lithium Project

Total count	Claim number (CDC series)	Area (ha)	Grant Date	Expiry Date
1	2505207	57.61	20/11/2017	19/11/2019
2	2505208	57.60	20/11/2017	19/11/2019
3	2505209	57.60	20/11/2017	19/11/2019
4	2505210	57.59	20/11/2017	19/11/2019
5	2505211	57.59	20/11/2017	19/11/2019
6	2505212	57.59	20/11/2017	19/11/2019
7	2505213	57.58	20/11/2017	19/11/2019
8	2505214	57.58	20/11/2017	19/11/2019
9	2505215	57.58	20/11/2017	19/11/2019
10	2505241	57.54	20/11/2017	19/11/2019
11	2505242	57.58	20/11/2017	19/11/2019
12	2505243	57.58	20/11/2017	19/11/2019
13	2505244	57.58	20/11/2017	19/11/2019
14	2505245	57.57	20/11/2017	19/11/2019
15	2505246	57.57	20/11/2017	19/11/2019
16	2505247	57.57	20/11/2017	19/11/2019
17	2505248	57.57	20/11/2017	19/11/2019
18	2505249	57.57	20/11/2017	19/11/2019
19	2505250	57.56	20/11/2017	19/11/2019
20	2505251	57.56	20/11/2017	19/11/2019
21	2505252	57.56	20/11/2017	19/11/2019
22	2505253	57.56	20/11/2017	19/11/2019
23	2505254	57.56	20/11/2017	19/11/2019
24	2505255	57.55	20/11/2017	19/11/2019
25	2505256	57.55	20/11/2017	19/11/2019

Total count	Claim number (CDC series)	Area (ha)	Grant Date	Expiry Date
26	2505257	57.55	20/11/2017	19/11/2019
27	2505258	57.54	20/11/2017	19/11/2019
28	2505259	57.54	20/11/2017	19/11/2019

Lac du Marcheur Cobalt Project

Total Count	Claim number (CDC series)	Area (ha)	Date Granted	Date Expires
1	2505515	59.61	20/11/2017	19/11/2019
2	2505516	59.61	20/11/2017	19/11/2019
3	2473803	59.55	27/01/2017	26/01/2019
4	2473804	59.54	27/01/2017	26/01/2019
5	2473805	59.53	27/01/2017	26/01/2019
6	2473806	59.53	27/01/2017	26/01/2019
7	2473807	59.53	27/01/2017	26/01/2019
8	2473808	59.52	27/01/2017	26/01/2019
9	2488121	56.75	6/04/2017	5/04/2019
10	2488122	34.77	6/04/2017	5/04/2019
11	2488123	24.04	6/04/2017	5/04/2019
12	2488124	19.67	6/04/2017	5/04/2019
13	2488125	0.72	6/04/2017	5/04/2019
14	2488126	27.75	6/04/2017	5/04/2019
15	2488062	58.30	5/04/2017	4/04/2019
16	2488063	31.04	5/04/2017	4/04/2019
17	2488064	31.51	5/04/2017	4/04/2019

18	2488065	59.61	5/04/2017	4/04/2019
19	2488066	59.61	5/04/2017	4/04/2019
20	2488067	59.61	5/04/2017	4/04/2019
21	2488068	59.61	5/04/2017	4/04/2019
22	2488069	59.61	5/04/2017	4/04/2019
23	2477461	59.55	7/02/2017	6/02/2019
24	2477462	56.91	7/02/2017	6/02/2019
25	2477463	8.83	7/02/2017	6/02/2019
26	2477464	46.28	7/02/2017	6/02/2019
27	2477465	49.94	7/02/2017	6/02/2019
28	2477466	10.88	7/02/2017	6/02/2019
29	2477467	23.53	7/02/2017	6/02/2019
30	2477468	56.87	7/02/2017	6/02/2019
31	2477469	9.58	7/02/2017	6/02/2019
32	2477470	54.20	7/02/2017	6/02/2019
33	2477471	41.03	7/02/2017	6/02/2019
34	2477472	55.11	7/02/2017	6/02/2019
35	2477473	18.90	7/02/2017	6/02/2019
36	2477474	35.87	7/02/2017	6/02/2019

Eade Gold Project

Total Count	Claim number (CDC series)	Area (ha)	Grant Date	Expiry Date
1	2434601	51.39	4-Nov-15	3-Nov-19
2	2434602	51.4	4-Nov-15	3-Nov-19
3	2450053	51.39	20-Jun-16	19-Jun-20
4	2457201	51.4	12-Aug-16	11-Aug-20
5	2457202	51.4	12-Aug-16	11-Aug-20
6	2523119	51.39	25-Sep-18	24-Sep-20
7	2527905	51.39	15-Nov-18	14-Nov-20
8	2527906	51.39	15-Nov-18	14-Nov-20
9	2527907	51.39	15-Nov-18	14-Nov-20
10	2527908	51.39	15-Nov-18	14-Nov-20
11	2527909	51.39	15-Nov-18	14-Nov-20
12	2528118	51.4	27-Nov-18	26-Nov-20
13	2528119	51.4	27-Nov-18	26-Nov-20
14	2528120	51.4	27-Nov-18	26-Nov-20
15	2528121	51.4	27-Nov-18	26-Nov-20

Total Count	Claim number (CDC series)	Area (ha)	Grant Date	Expiry Date
16	2528122	51.39	27-Nov-18	26-Nov-20
17	2528123	51.39	27-Nov-18	26-Nov-20
18	2528124	51.39	27-Nov-18	26-Nov-20
19	2528125	51.39	27-Nov-18	26-Nov-20
20	2528126	51.39	27-Nov-18	26-Nov-20
21	2528127	51.39	27-Nov-18	26-Nov-20
22	2528128	51.39	27-Nov-18	26-Nov-20
23	2528177	51.4	27-Nov-18	26-Nov-20
24	2528178	51.4	27-Nov-18	26-Nov-20
25	2528179	51.4	27-Nov-18	26-Nov-20
26	2528180	51.39	27-Nov-18	26-Nov-20
27	2528181	51.39	27-Nov-18	26-Nov-20
28	2528182	51.4	28-Nov-18	27-Nov-20
29	2528183	51.4	28-Nov-18	27-Nov-20
30	2528261	51.39	28-Nov-18	27-Nov-20
31	2528262	51.39	28-Nov-18	27-Nov-20

Total Count	Claim number (CDC series)	Area (ha)	Grant Date	Expiry Date
32	2528263	51.39	28-Nov-18	27-Nov-20
33	2529093	51.4	11-Dec-18	10-Dec-20
34	2529094	51.4	11-Dec-18	10-Dec-20
35	2529095	51.39	11-Dec-18	10-Dec-20
36	2529096	51.39	11-Dec-18	10-Dec-20
37	2529097	51.4	11-Dec-18	10-Dec-20
38	2529098	51.4	11-Dec-18	10-Dec-20
39	2529236	51.39	14-Dec-18	13-Dec-20
40	2434601	51.39	4-Nov-15	3-Nov-19

Pontois Gold Project

Total Count	Claim number (CDC series)	Area (ha)	Grant Date	Expiry Date
1	2427155	51.23	24/04/2015	23/04/2021
2	2427156	51.23	24/04/2015	23/04/2021
3	2462322	51.23	16/09/2016	15/09/2020
4	2527510	51.25	15/11/2018	14/11/2020
5	2527511	51.25	15/11/2018	14/11/2020
6	2527512	51.25	15/11/2018	14/11/2020
7	2527513	51.25	15/11/2018	14/11/2020
8	2527514	51.25	15/11/2018	14/11/2020
9	2527515	51.25	15/11/2018	14/11/2020
10	2527516	51.25	15/11/2018	14/11/2020
11	2527517	51.25	15/11/2018	14/11/2020

Felicie Gold Project

Total Count	Claim number (CDC series)	Area (ha)	Grant Date	Expiry Date
1	2491512	51.25	04/05/2017	03/05/2021
2	2491513	51.25	04/05/2017	03/05/2021