



ASX ANNOUNCEMENT

18 November 2019

Exploration and Resource Definition Drilling Underway

- **Laverton Links Sulphate of Potash Project**

- Targeting an initial Mineral Resource at the Lake Rason Prospect with a 500 m aircore drilling program to convert the current Exploration Target to a Mineral Resource estimate.
- Targeting an initial Mineral Resource at the Lake Hope Campbell Prospect with a 1,400 m aircore drilling program.
- Determining the prospectivity of the East Laverton Prospect with a gravity survey to refine drill hole locations followed by an initial aircore drilling program of 1,000 m.

- **Lake Throssell Sulphate of Potash Project**

- A Heritage survey is scheduled in advance of a reconnaissance exploration and sampling program across the surface of the highly prospective Lake Throssell Sulphate of Potash Project.

- Key results from the planned programs at Trigg's 100% owned SOP Projects are expected to be released in Q3 FY20.

Trigg Mining Limited (**ASX: TMG**) (**Trigg or the Company**) has commenced the next crucial step in establishing the mineral endowment of its large SOP tenure near Laverton in Western Australia with the mobilisation of a geophysics team and an aircore drill rig to its Laverton Links SOP Project. Later this month the Company will also seek heritage clearance from the Ngaanyatjarra traditional owners at the highly prospective Lake Throssell SOP Project paving the way for a shallow pit sampling program of the playa lake surface.

Trigg is looking to secure Australia's sustainable agriculture future through the exploration of essential potassium fertiliser, sulphate of potash (**SOP**), necessary for global food production and human nutrition. SOP provides essential macro nutrients for plant growth without any detrimental elements, such as chloride found in muriate of potash (**MOP**). In addition, SOP can be produced sustainably through the solar evaporation of potassium-rich hypersaline brine water, without the need for large open pits or waste-rock dumps.

Trigg listed on the ASX last month following completion of a \$4.5 million IPO and is actively exploring approximately 2,640 km² of granted tenure for the essential mineral fertiliser, sulphate of potash, across two projects: Laverton Links SOP and Lake Throssell SOP.

Laverton Links Sulphate of Potash Project

The Laverton Links Sulphate of Potash Project (**Laverton Links**) consists of three prospect areas: Lake Rason, Lake Hope Campbell and East Laverton covering some 2,315 km² of granted tenure 35 km – 190 km east of Laverton. Laverton Links is nearby established energy and transport infrastructure including 2 gas pipelines, roads, rail and a commercial airport.

Lake Rason Prospect

The Lake Rason Prospect (**Lake Rason**) contains over 215 km² of playa lake surface and underlying palaeochannel. It is the most advanced of the Company's prospects with early exploration including geophysics and an aircore drilling program defining a JORC Compliant Exploration Target.¹ The 500 m aircore drilling program will supplement the previous exploration data and aid in the calculation of an initial Mineral Resource estimate covering the salt lake and the underlying palaeochannel. Results from the program are expected to be available in Q3 FY20.

Lake Hope Campbell Prospect

The Lake Hope Campbell Prospect (**Lake Hope Campbell**) lies to the west of the Lake Rason and contains over 100 km of interpreted palaeochannel and scattered playa areas including the 35 km² Lake Hope Campbell. Early shallow pit sampling has identified mineralisation along the strike of the tenure.

The initial drilling program underway will test the palaeochannel along the 100 km of strike length with approximately 1,400 m of aircore drilling to measure the aquifer physical characteristics and SOP grade. Results from the program are expected to be available in Q3 FY20, including a potential initial Mineral Resource estimate.

East Laverton Prospect

The East Laverton Prospect lies approximately 35 km east of Laverton and contains around 130 km of interpreted palaeochannel and scattered playa areas. This prospect has not yet been explored for SOP and the current program to test the tenure includes a gravity survey and approximately 1,000 m of aircore drilling to determine the aquifer characteristics and identify any potential SOP mineralisation. The gravity survey is currently underway and will refine drill hole locations for the aircore drilling program.

¹ See Prospectus and Supplementary Prospectus released to ASX on 1 October 2019 and Corporate Presentation released on 3 October 2019 for further information in relation to the current Exploration Target.

Lake Throssell Sulphate of Potash Project

The Lake Throssell Sulphate Potash Project (**Lake Throssell**) is a highly prospective SOP project and lies approximately 200 km east of Laverton along the Great Central Road (through to Queensland) and covers approximately 323 km² of predominantly playa lake area and underlying palaeochannel. In 2017 Trigg and the Ngaanyatjarra traditional owners entered into an exploration access agreement and under this agreement a heritage survey has been scheduled for later this month in preparation of shallow pit sampling across the lake surface. The heritage survey is anticipated to provide Trigg with the clearance to undertake exploration activities at Lake Throssell.

The shallow pit sampling will test the hypothesis that the very high gypsum index across the lake surface indicates the potential for highly concentrated brines. The sampling program is planned for Q2 FY20 with results expected to be available by Q3 FY20, subject to the heritage clearance.

Managing Director, Keren Paterson commented, *“We are very pleased to have exploration underway across the Trigg’s Sulphate of Potash Projects. Over the coming weeks we will see drilling occur across the Laverton Links SOP Project where we are targeting the reporting of initial Mineral Resource estimate and at Lake Throssell reconnaissance exploration will commence once Trigg has secured heritage clearance from the Ngaanyatjarra traditional owners.*

We look forward to reporting the results from each of these programs to our shareholders in the New Year.”

Trigg Mining Limited

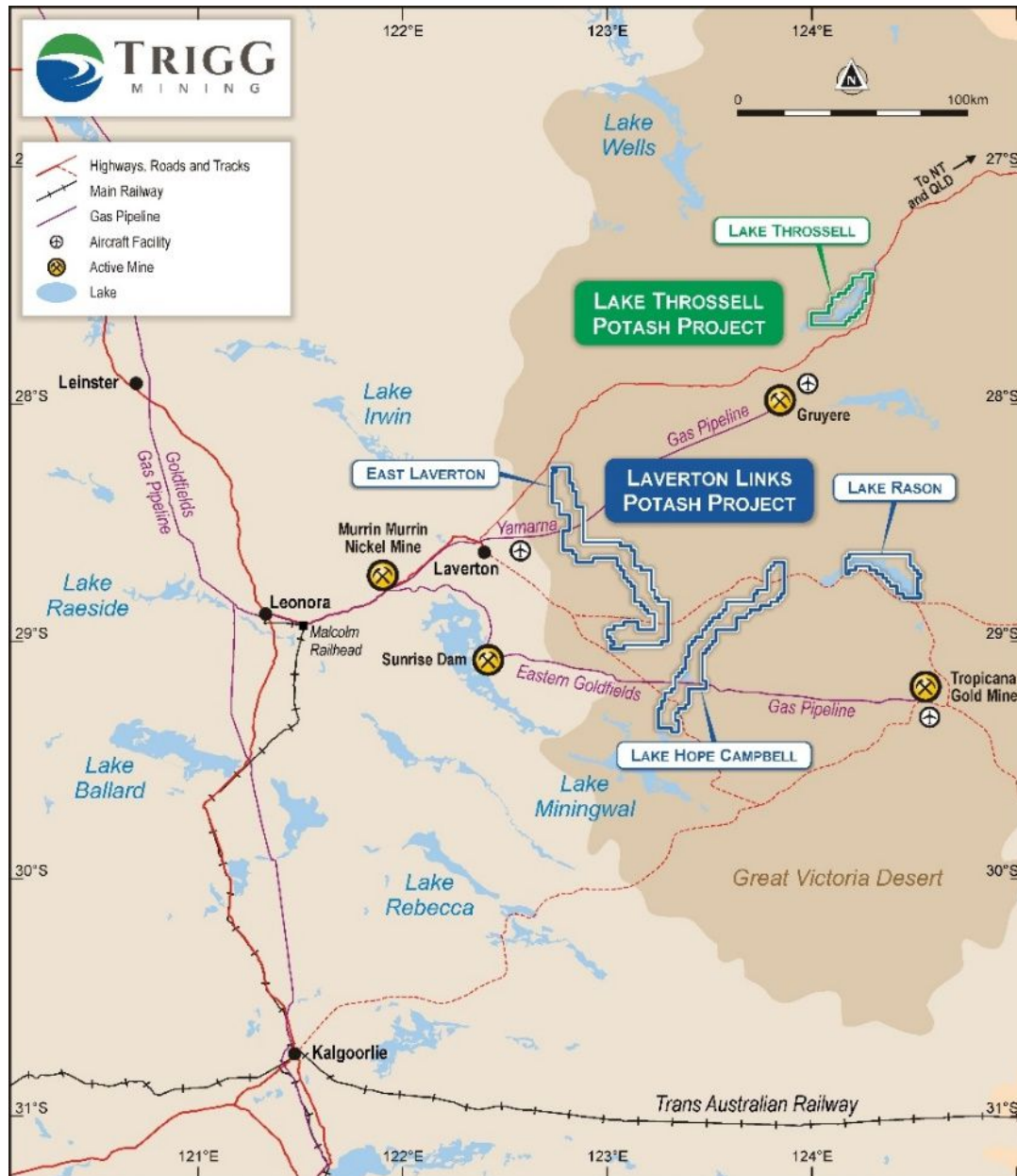


Keren Paterson
Managing Director
(08) 9220 2231
info@triggmining.com.au

About Trigg Mining

Trigg Mining is looking to secure Australia’s sustainable agriculture future through the exploration of essential potassium fertiliser, sulphate of potash (**SOP**), necessary for global food production and human nutrition. SOP provides essential macro nutrients for plant growth without any detrimental elements, such as chloride found in muriate of potash (**MOP**). In addition, SOP can be produced sustainably through the solar evaporation of potassium-rich hypersaline brine water, without the need for large open pits or waste-rock dumps.

The Trigg Mining SOP Projects are located nearby established energy and transport infrastructure for access to Australian and international agricultural markets, approximately 200 km east of Laverton in WA and include a JORC Compliant Exploration Target. The Projects cover approximately 2,640 km² of granted tenure containing over 400 km² of salt lake playa and 300 km of interpreted palaeochannels (ancient underground rivers) all highly prospective for brine hosted SOP.



Location of Trigg Mining's SOP Projects
showing established infrastructure and Prospect Locations



Location of Trigg Mining's Sulphate of Potash Projects
showing established infrastructure and the Western Australian agriculture area