



## INVESTIGATIONS UNDERWAY AT EAST SAMSON DAM PROSPECT FOR POTENTIAL GOLD MINING

### Highlights of work currently underway:

- Up to 30 resource infill RC drillholes on M27/263 at East Sampson Dam (ESD) Prospect to:
  - confirm gold grades in historical drilling (pre 2010)
  - extend gold mineralised envelopes across and along strike
- Aboriginal heritage survey over whole of M27/263
- Flora and fauna survey within potential mining areas
- Consultant mining engineer undertaking preliminary mining studies, including assessment of ore processing options
- RC samples from current program will be retained for metallurgical test work

**Gold prospectivity at Silver Swan North Project enhanced with two new tenement applications**

### Next Steps:

- RC assay results - January 2020
- Resource modelling towards JORC statement - February 2020
- Metallurgical test work if mining studies are encouraging - February 2020
- Ongoing exploration focussed on extending gold mineralisation from ESD, specifically:
  - Air core drilling along East Samson Dam to Tyrells gold auger anomaly - March 2020
  - Explore gold anomalism at Yalumba and Happs Prospects (E27/528 and P27/2232) - Q2 2020

#### CORPORATE DIRECTORY

NON EXECUTIVE CHAIRMAN  
Terry Streeter

MANAGING DIRECTOR  
Shane Sadleir

COMMERCIAL DIRECTOR  
Ralph Winter

NON EXECUTIVE DIRECTOR  
Adrian Larking

JOINT COMPANY SECRETARIES  
Ralph Winter / David McEntaggart

ASX: MOH

#### CORPORATE ADDRESS

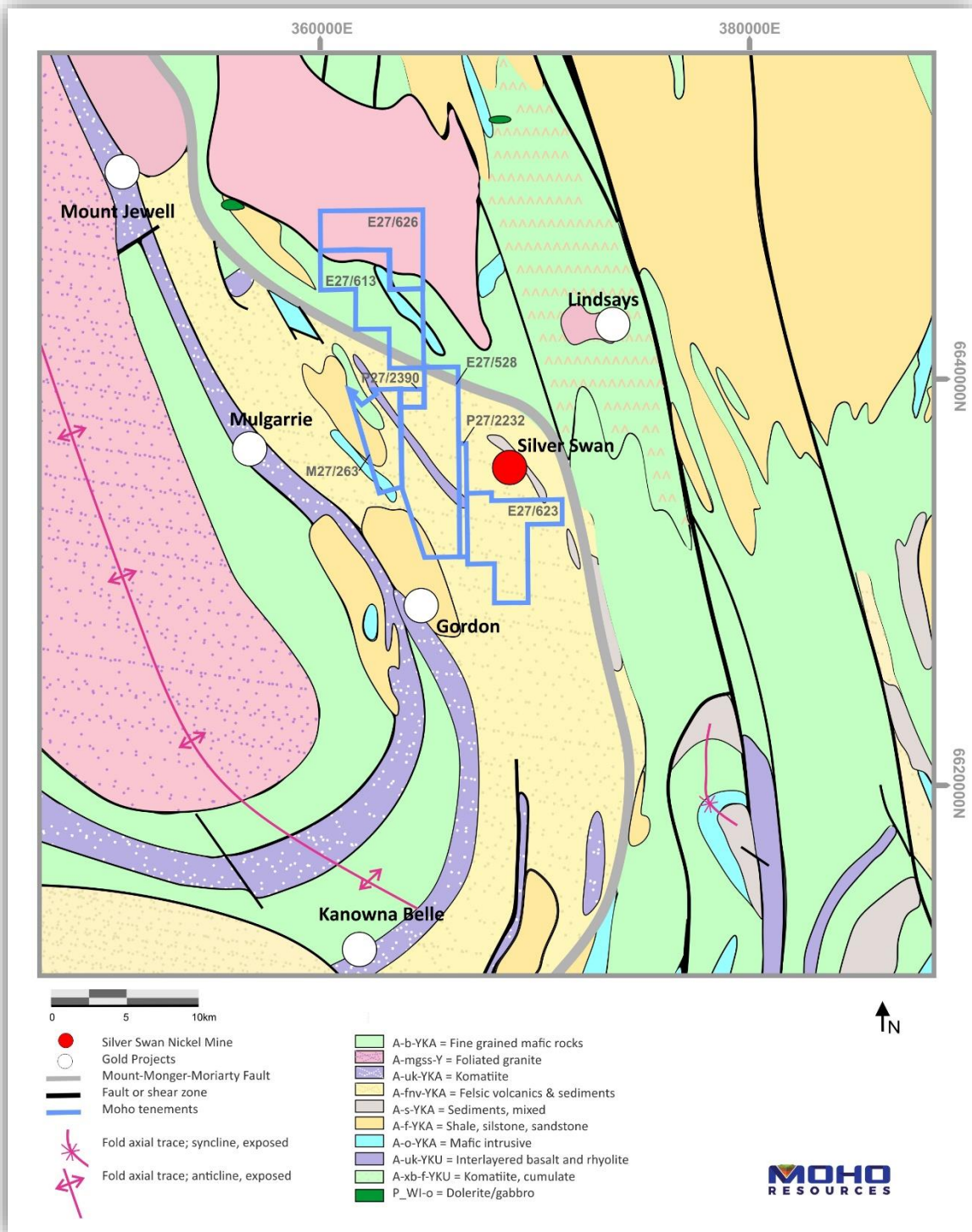
L11/216 ST GEORGES TCE  
PERTH 6000

T +61 (08) 9481 0389  
+61 (08) 9463 6103

E [admin@mohoresources.com.au](mailto:admin@mohoresources.com.au)

W [www.mohoresources.com.au](http://www.mohoresources.com.au)

Moho Resources Ltd (ASX:MOH) (**Moho** or **Company**) is pleased to announce it has initiated investigations to confirm the character and extent of gold mineralisation to enable Moho to carry out a pre-feasibility investigations at its East Samson Dam gold prospect at the Silver Swan North project, 50 km NE of Kalgoorlie (Figure 1).



**Figure 1: Regional geological setting of Moho's Silver Swan North Project**

**RC Drilling at East Samson Dam Prospect, Silver Swan North Project**

Resource definition infill drilling has commenced at the East Samson Dam with the aim of outlining a gold resource which, if the results prove sufficient, the Company could conceivably bring into production as soon as possible.

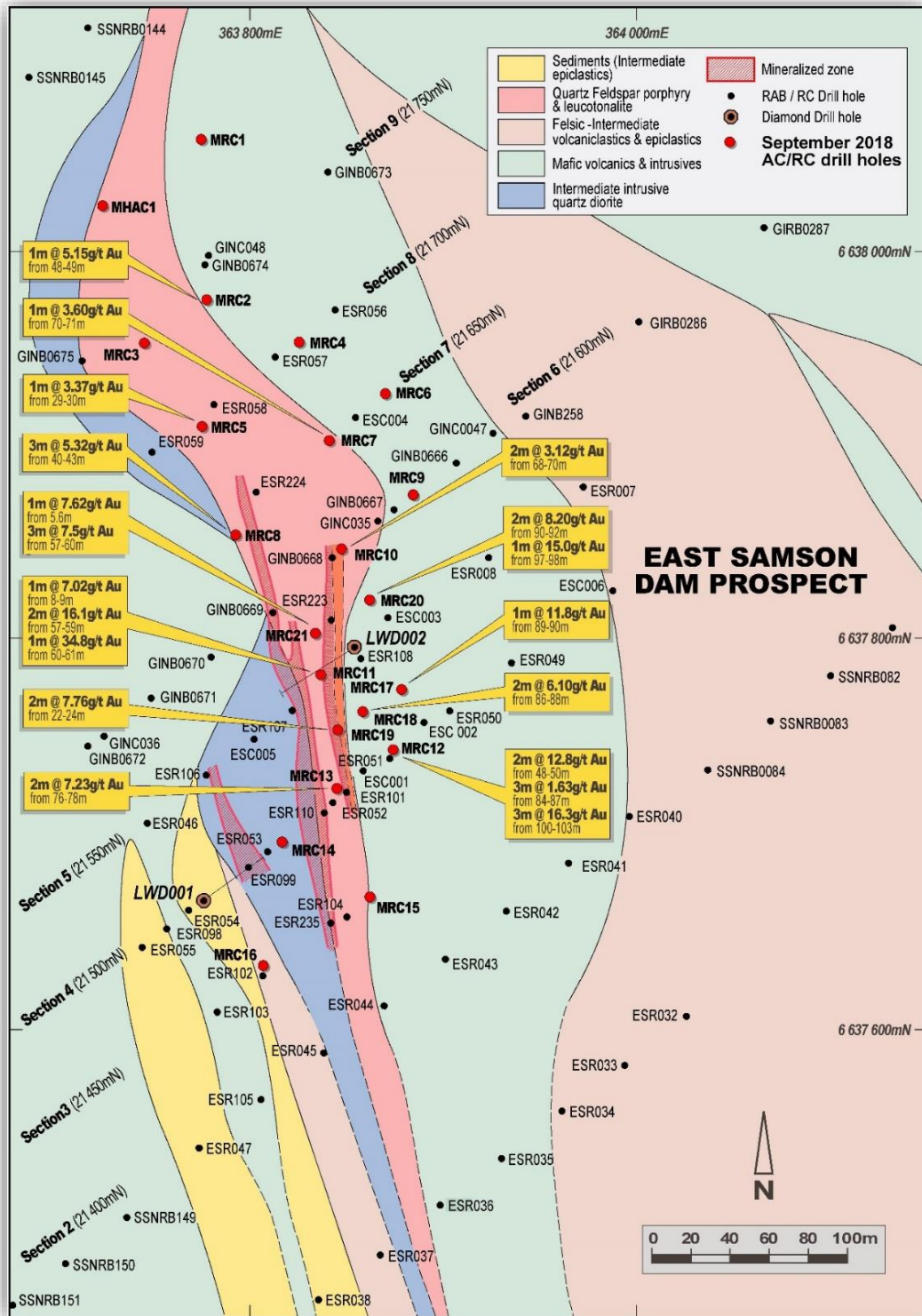
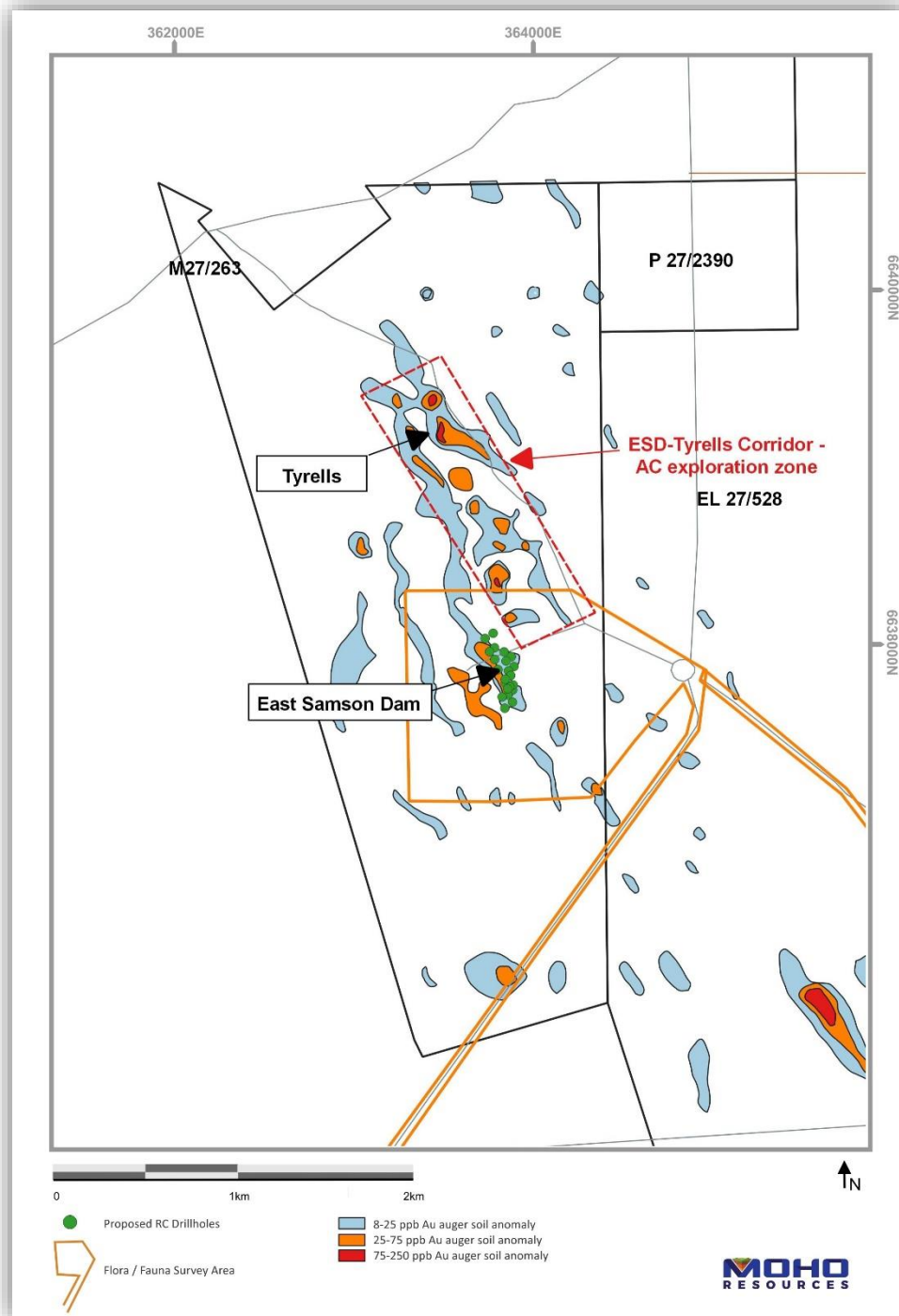


Figure 2: RC gold intersections reported by Moho (December 2018)

In September 2018 Moho’s maiden RC drilling program at the East Samson Dam prospect discovered new zones of high-grade gold mineralisation which the company is seeking to confirm, extend and further delineate. (see ASX announcement 16/11/2018 ENCOURAGING GOLD ASSAYS FROM MOHO’S FIRST DRILLING PROGRAM AT SILVER SWAN NORTH and ASX announcement 19/12/2018 HIGH GRADE GOLD ASSAYS FROM ONE METRE SAMPLES AT SILVER SWAN NORTH (Figure 2).



**Figure 3: Plan showing (i) general location of proposed RC drill holes at East Samson Dam; (ii) historical auger soil geochemistry (after Lawson Gold prospectus 2010); (iii) proposed aircore drilling in corridor between Tyrells and East Sampson Dam Prospects; and area subject to flora and fauna surveys**



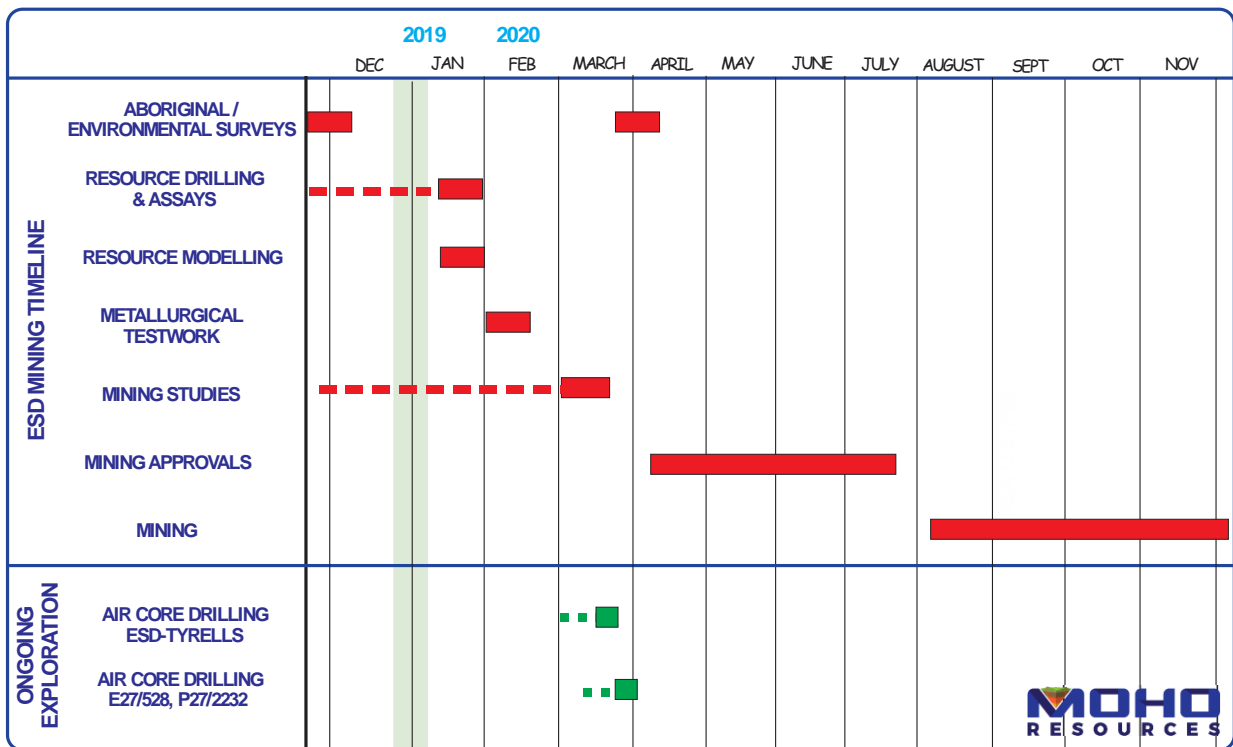
Up to thirty RC drillholes are planned across the prospect (Figure 3) to infill between sections and extend mineralisation along and across strike. It is anticipated that the drilling will take approximately 7 days to complete and assay results are expected January 2020.

**Pre-Feasibility Mining Studies**

The Company has commissioned a number of investigations on the gold potential at East Samson Dam, including;

- Flora and fauna survey of area around East Samson Dam (underway)
- Heritage survey across all of ML27/263 (underway)
- Consultant Mining Engineer has been engaged to coordinate studies and prepare a detailed mining proposal if current drilling results are sufficiently encouraging
- Metallurgical testwork and assessments

An approximate timeline of the tasks to be undertaken to enable Moho to complete a pre-feasibility study of potential gold mining options which, if successful, could lead to commencement of gold production from M27/263, is outlined in the bar chart in Figure 4.



SILVER SWAN NORTH GOLD MINING AND EXPLORATION PLANNER 2019-20

Figure 4: Approximate timeline of tasks to be undertaken at Silver Swan North Project potentially leading to gold production

**Next Steps:**

- RC assay results - January 2020
- Resource modelling towards JORC statement - February 2020
- Metallurgical test work if resource characterisation and mining studies encouraging - February 2020
- Ongoing exploration focussed on extending gold mineralisation away from ESD, specifically:
  - Air core drilling along East Samson Dam to Tyrells gold auger anomaly - March 2020
  - Explore gold anomalism at Yalumba and Happs Prospects (E27/528 and P27/2232)- Q2 2020

**COMPETENT PERSONS STATEMENT**

The information in this announcement that relates to Exploration Results is based on information and supporting documentation compiled by Mr Bob Affleck, who is a R.P.Geo in the field of Mineral Exploration and Member of the Australasian Institute of Geoscientists. Mr Affleck is employed full-time as Exploration Manager of Moho Resources Ltd.

Mr Affleck has sufficient experience relevant to the style of mineralisation under consideration and to the activity which is being undertaken to qualify as a Competent Person as defined in the 2012 edition of the "Australasian Code for Reporting of Exploration Results, Mineral Resources and Ore Reserves". Mr Affleck consents to the inclusion in this announcement of the matters based on this information in the form and context in which it appears.

**Moho's Interest in Silver Swan North Tenements**

Moho is the 100% registered owner of granted tenements E27/528, P27/2232, P27/2390, E27/613 and the applicant for ELA27/623 and ELA27/626.

In July 2015 Moho entered into a farm-in and joint venture agreement with Odin Metals Ltd (ASX:ODM, then Lawson Gold Ltd) (Odin) to earn up to 70% interest in M27/263 and E27/345. E27/345 has been exhaustively explored and is in the process of relinquishment. Farmin expenditure by Moho resulted in the Company earning a 51% interest in the joint venture in early 2019 and is now close to 70% interest.

## About Moho Resources Ltd



**MAP OF MOHO'S PROJECT AREAS**

Moho Resources Ltd is an Australian mining company which listed on the ASX in November 2018. The Company is focused on gold and nickel exploration at Empress Springs, Silver Swan North and Burracoppin.

Moho's Board is chaired by Mr Terry Streeter, a well-known and highly successful West Australian businessman with extensive experience in funding and overseeing exploration and mining companies, including Jubilee Mines NL, Western Areas NL and Midas Resources Ltd.

Moho has a strong and experienced Board lead by geoscientist Shane Sadleir as Managing Director, Commercial Director Ralph Winter and Adrian Larking, lawyer and geologist, as Non-Executive Director.

Highly experienced geologists Bob Affleck (Exploration Manager) and Max Nind (Principal Geologist) are supported by leading industry consultant geophysicist Kim Frankcombe (ExploreGeo Pty Ltd) and experienced consultant geochemists Richard Carver (GCXplore Pty Ltd) and Dr Carl Brauhart (CSA Global Pty Ltd).

Moho's geophysical programs and processing and analysis of the results are supervised by Kim Frankcombe (ExploreGeo Pty Ltd) who is a geologist and geophysicist with 40 years' experience in mineral exploration. He has worked for major mining companies, service companies and for over 20 years as an independent geophysical consultant. He was a member of the discovery team for several significant deposits including one Tier 1 deposit. He manages the ExploreGeo consulting group which provides specialist geophysical advice to explorers.

Dr Jon Hronsky (OA) provides high level strategic and technical advice to Moho. Jon has more than thirty years of experience in the global mineral exploration industry, primarily focused on project generation, technical innovation and exploration strategy development. He has worked across a diverse range of commodities and geographies, and has particular expertise in targeting for nickel sulphide and gold deposits.

### For further information please contact:

Shane Sadleir, Managing Director  
T: +61 411 704 498  
E: [shane@mohoresources.com.au](mailto:shane@mohoresources.com.au)

Ralph Winter, Commercial Director  
T: +61 435 336 538  
E: [ralph@mohoresources.com.au](mailto:ralph@mohoresources.com.au)