



ASX ANNOUNCEMENT

26 November 2019

AGM Presentation

Trigg Mining Limited (ASX:TMG) is pleased to release a copy of the AGM Presentation to be provided by Ms Keren Paterson to shareholders at the Annual General Meeting to be held in Perth commencing at 10:00 am AWST today. The AGM Presentation will focus on the current activities and outlook.

Trigg Mining Limited

Karen Logan
Company Secretary
(08) 9220 2231
info@triggmining.com.au

About Trigg Mining

Trigg Mining is looking to secure Australia's sustainable agriculture future through the exploration of essential potassium fertiliser, sulphate of potash (**SOP**), necessary for global food production and human nutrition. SOP provides essential macro nutrients for plant growth without any detrimental elements, such as chloride found in muriate of potash (**MOP**). In addition, SOP can be produced sustainably through the solar evaporation of potassium-rich hypersaline brine water, without the need for large open pits or waste-rock dumps.

The Trigg Mining SOP Projects are located nearby established energy and transport infrastructure for access to Australian and international agricultural markets, approximately 200 km east of Laverton in WA and include a JORC Compliant Exploration Target. The Projects cover approximately 2,640 km² of granted tenure containing over 400 km² of salt lake playa and 300 km of interpreted paleochannels (ancient underground rivers) all highly prospective for brine hosted SOP.



TRIGG
M I N I N G
(ASX:TMG)

FERTILISERS FOR GLOBAL FOOD SECURITY

AGM Presentation
26 November 2019

CAPITAL STRUCTURE

Fully Paid Ordinary Shares	
Quoted	40,200,000
Escrowed	17,787,500
Total Fully Paid Ordinary Shares	57,987,500
Share Price (22/11/19)	\$0.085
Market Capitalisation	\$4.9 million
Shareholders	
Directors and Management	18%
Institutional Investors	5%

OPTIONS ON ISSUE

\$0.20 Listed Options exp 31/10/21	19,037,500
\$0.20 Unlisted Options exp 31/10/21	11,100,000
\$0.25 Unlisted Options exp 07/01/23	2,000,000
Performance Rights vesting on significant milestones	4,235,626

BOARD OF DIRECTORS AND EXECUTIVE LEADERSHIP

Keren Paterson - Managing Director & CEO

BEng (Mining) MBA AdvDipCorpGov FAusIMM MAICD WA First Class Mine Manager

A recognised mining industry leader with more than 20 years' international experience spanning the entire mining value chain. Roles include leading successful green-fields exploration, feasibility studies, mine development, operations management, mining services, project financing and M&A.



Mike Ralston - Non Executive Chairperson

BComm ACMA

Experienced mining executive, company director and former managing director of an ASX listed resource company, experienced in corporate management and finance.



Bill Bent - Non Executive Director

BSc (Chem Eng) MBA

Experienced corporate advisor, chemical engineer and former managing director of an ASX listed resources company.



Neil Inwood – Technical Manager

Bsc (Geol), PGradDip(Hydro), MSc(Geol), FAusIMM

+25 years international experience in mining, exploration geology, project management and review. CP for the ASX and QP for the TSX.



Karen Logan - Company Secretary

BCom Grad DipAppCorpGov FCIS FGIA FFin GAICD

Chartered Company Secretary with extensive compliance, capital raising, M&A and IPO experience.



Corporate

- ✓ IPO and ASX listing completed on 3 October, raising \$4.5 million for SOP exploration.

Laverton Links Sulphate of Potash Project

- ✓ Geophysics surveys at East Laverton and Lake Hope Campbell completed.
- ✓ 1,400 m air core drilling at Lake Hope Campbell underway.
- ✓ 500 m and 1,000 m air core drilling programs scheduled at Lake Rason and East Laverton in the coming weeks.
- ✓ **ASSAY RESULTS AND INITIAL MINERAL RESOURCE ESTIMATES ANTICIPATED NEXT QUARTER**



Air core drilling at Lake Hope Campbell

TRIGG MINING – PROGRESS UPDATE cont.

Lake Throssell Sulphate of Potash Project

- ✓ Heritage survey underway.
- ✓ Planned pit sampling across the lake this week.
- ✓ **ASSAY RESULTS AND INITIAL MINERAL RESOURCE ANTICIPATED NEXT QUARTER**

Sulphate of Potash (SOP) Market

- ✓ Western Australia **SOP Price up 6% y.o.y** from A\$989/t to A\$1,049/t¹.
¹Kwinana WA price list (Oct 2019)



Consultation meeting with the Ngaanyatjarra

INVESTMENT SUMMARY

Why Trigg Mining?

- ✓ We're here to build mines communities can be proud of:
 - By exploring for the essential mineral fertiliser - SOP for sustainable agricultural production and human nutrition.
- ✓ 2,640 km² of granted tenure in Western Australia located close to established energy and transport infrastructure:
 - Over 400 km² of playa lakes and 300 km of paleochannels all prospective for SOP mineralisation.
 - SOP already identified across half the tenure including a JORC Compliant Exploration Target at Lake Rason.
- ✓ Strong news flow from field programs underway including assay results and initial Mineral Resource estimates.

Why Sulphate of Potash (SOP, potassium sulphate)?

- ✓ Potassium is essential for life – it's needed by all living cells.
- ✓ Essential fertiliser for high-value chloride sensitive crops - vegetables, fruit, tree nuts, coffee, avocados and crops under glass.
- ✓ It cannot be substituted – demand is inelastic.
- ✓ Australia currently imports all its potash needs.
- ✓ Growing global demand driven by megatrends: rising population; changing diets and need for sustainable intensified agriculture.



WHAT IS SULPHATE OF POTASH (SOP)?

SOP (Potassium Sulphate, K_2SO_4) supplies two essential macro nutrients: potassium and sulphur in a highly concentrated fertiliser critical for plant growth.

POTASSIUM (K)

- Essential for all living cells.
- Activates enzymes for plant metabolism.
- Promotes resistance to disease, drought and frost.
- Improves quality, taste and appearance.
- Essential dietary mineral for human health.



SULPHUR (S)

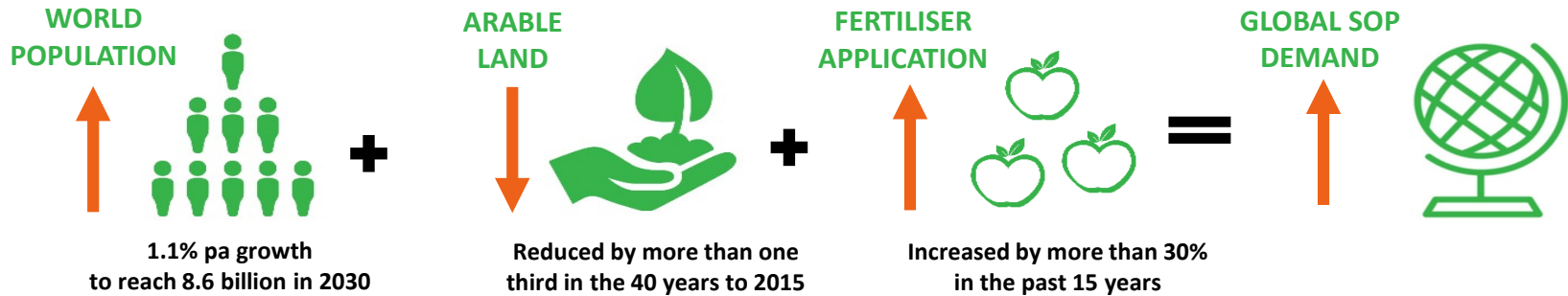
- Supports protein development and photosynthesis.
- Protect plants from pests and environmental stress.
- Sulphur deficiency is becoming more widespread.
- Some crops, such as canola and onions, need sulphur for optimal yields.



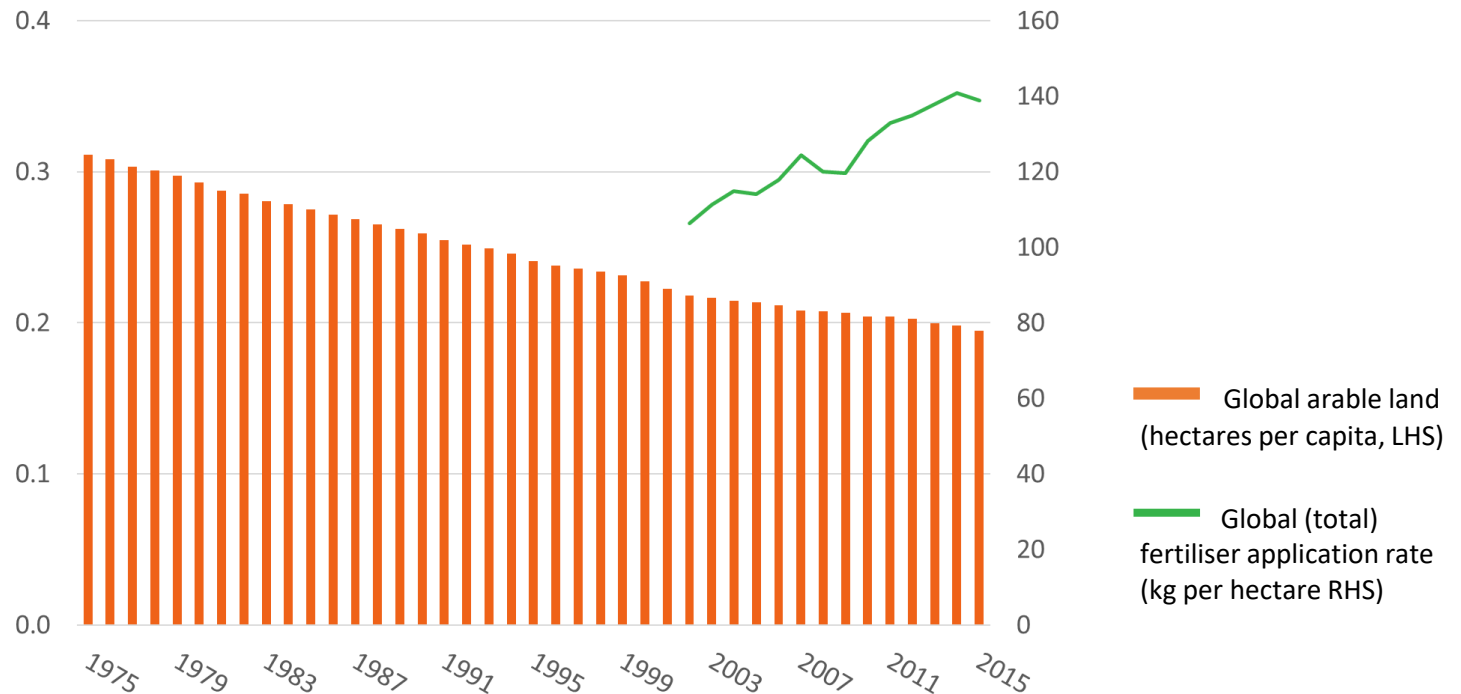
Typical crops that use SOP

STEADY DEMAND GROWTH

Sustainable global growth for fertiliser and SOP



Global arable land and fertiliser application rates



Sources: United Nations, World Bank



PROJECT PORTFOLIO

- 2,640 km²
- All tenements are granted
- 100% owned

LAVERTON LINKS POTASH

- Lake Rason
- Lake Hope Campbell
- East Laverton

LAKE THROSSSELL POTASH

- Lake Throssell

Close to transport infrastructure:

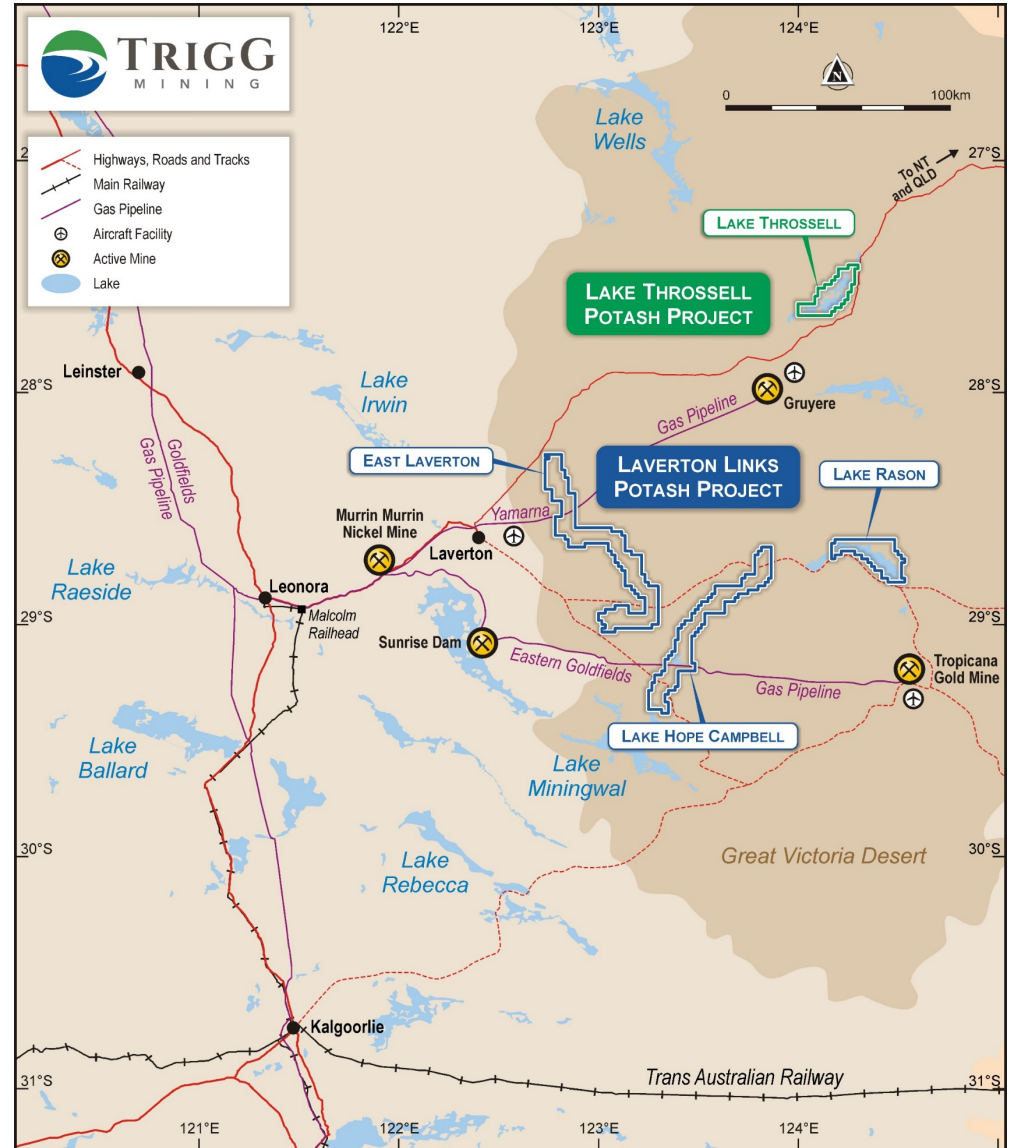
- 200 km east of Laverton accessible by established roads.
- Highway from Laverton to the Malcom Railhead at Leonora.
- Rail to Esperance, Fremantle and Kwinana ports.
- 3 airstrips / airport within 60 km of the Projects.
- Three State Governments planning to upgrade the Outback Highway (via the Great Central Road) from WA to NT and QLD.

Close to energy infrastructure:

- Two gas pipelines pass through the tenements.

Large granted tenure prospective for SOP:

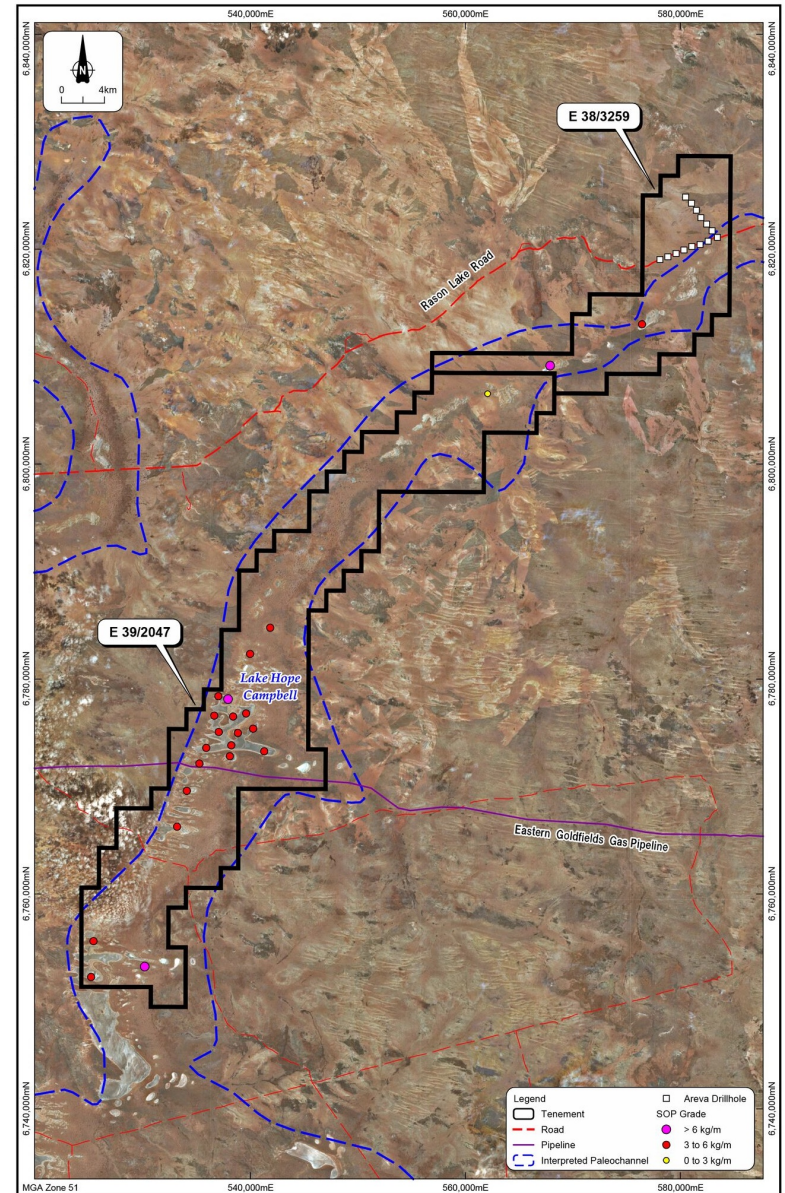
- 2,640 km² across two Sulphate of Potash Projects near Laverton in Western Australia.
- Over 400 km² of playa lakes and 300 km of palaeochannels prospective for SOP.
- Previous exploration defined an Exploration Target at Lake Rason Prospect and identified mineralisation along the Lake Hope Campbell tenements.



LAVERTON LINKS: LAKE HOPE CAMPBELL

OVERVIEW

- Airborne electromagnetic and ground geophysics have defined 100 km of hypersaline palaeochannel.
- Previous results from shallow pit samples from across the tenements returned results of up to $6.7 \text{ kg/m}^3 \text{ K}_2\text{SO}_4$.
- 1,400 m air core drilling program underway.
- **ASSAY RESULTS AND INITIAL MINERAL RESOURCE EXPECTED NEXT QUARTER**



LAVERTON LINKS: LAKE RASON

OVERVIEW

- Previous drilling define an Exploration Target of 2.5 - 9.0 Mt of drainable SOP at 4.3 – 6.3 kg/m³¹.
- 215 km² of salt-lake playa and underlying palaeochannel.
- Potential to source brine from trenches and bores.
- Initial test work indicates the suitability of the brines to produce sulphate of potash.
- 500 m air core drilling program scheduled this quarter.
- **ASSAY RESULTS AND INITIAL MINERAL RESOURCE EXPECTED NEXT QUARTER**



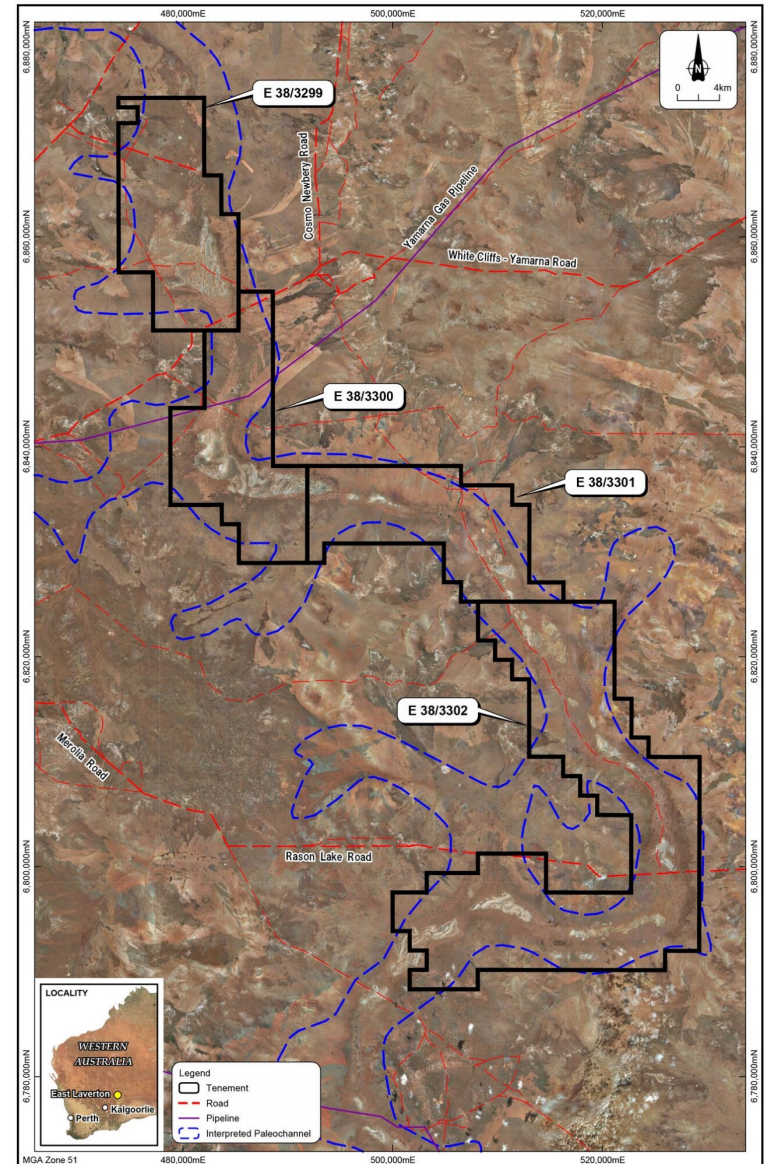
The potential quantity and grade of this Exploration Target is conceptual in nature. There has been insufficient exploration to estimate a Mineral Resource and it is uncertain if further exploration will result in the estimation of a Mineral Resource.

¹ See Competent Person's Statement – Page 16.

LAVERTON LINKS: EAST LAVERTON

OVERVIEW

- 130 km of interpreted palaeochannel and scattered playa areas.
- Ground geophysics survey completed.
- Initial 1,000 m aircore drilling program scheduled this quarter.
- **RESULTS EXPECTED NEXT QUARTER**

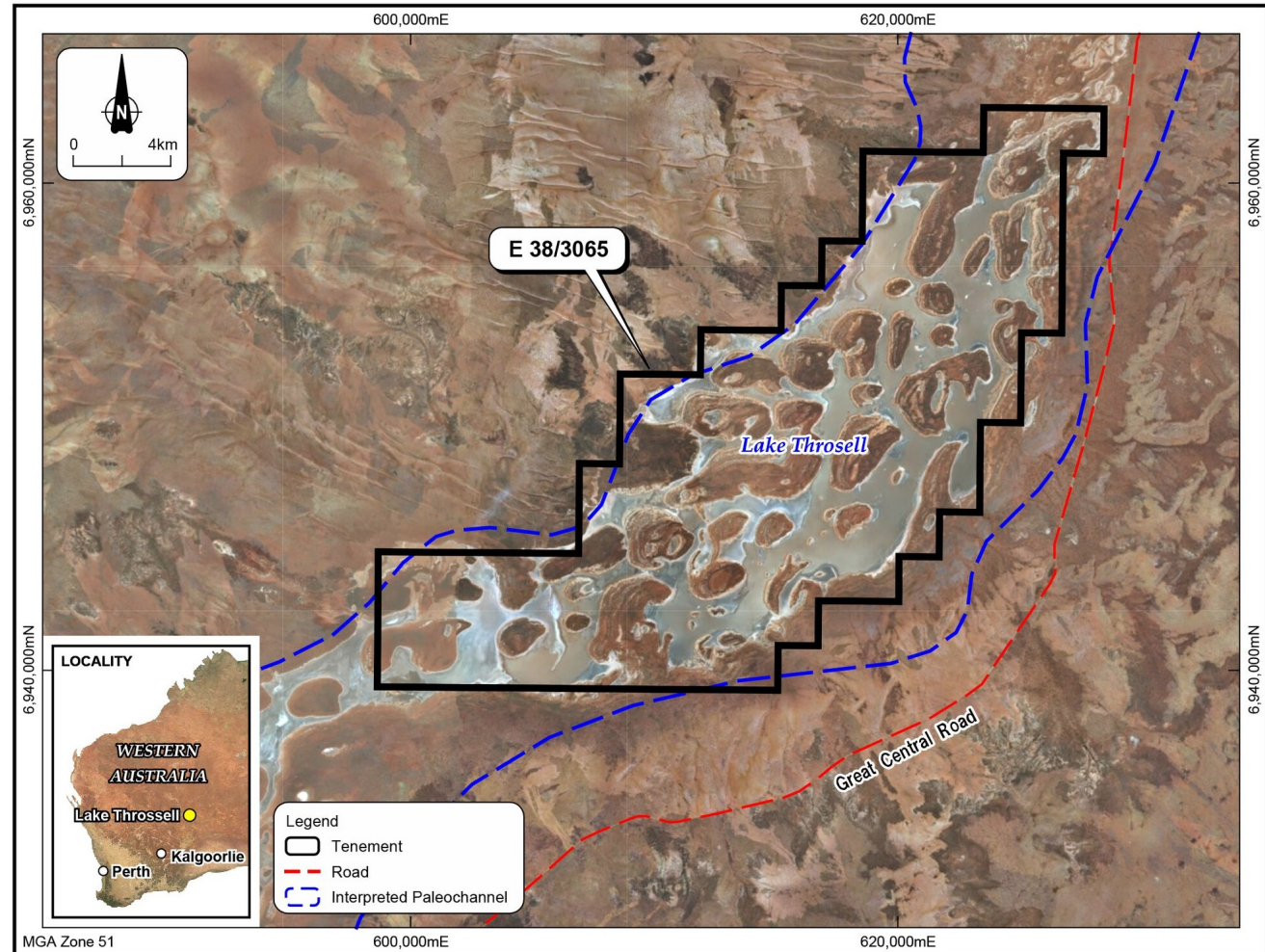


LAKE THROSSELL PROJECT

The Lake Throssell Project covers 322 km² of predominantly salt lake playa sediments and underlying interpreted palaeochannel.

OVERVIEW

- Adjacent to the Great Central Road, though to Alice Springs and Queensland via the Outback Highway.
- Native title agreement in place with the Ngaanyatjarra.
- Rated by Geoscience Australia¹ as one of the most prospective lakes for SOP brine in the region.
- Heritage survey underway with planned shallow pit sampling.
- **RESULTS EXPECTED NEXT QUARTER**

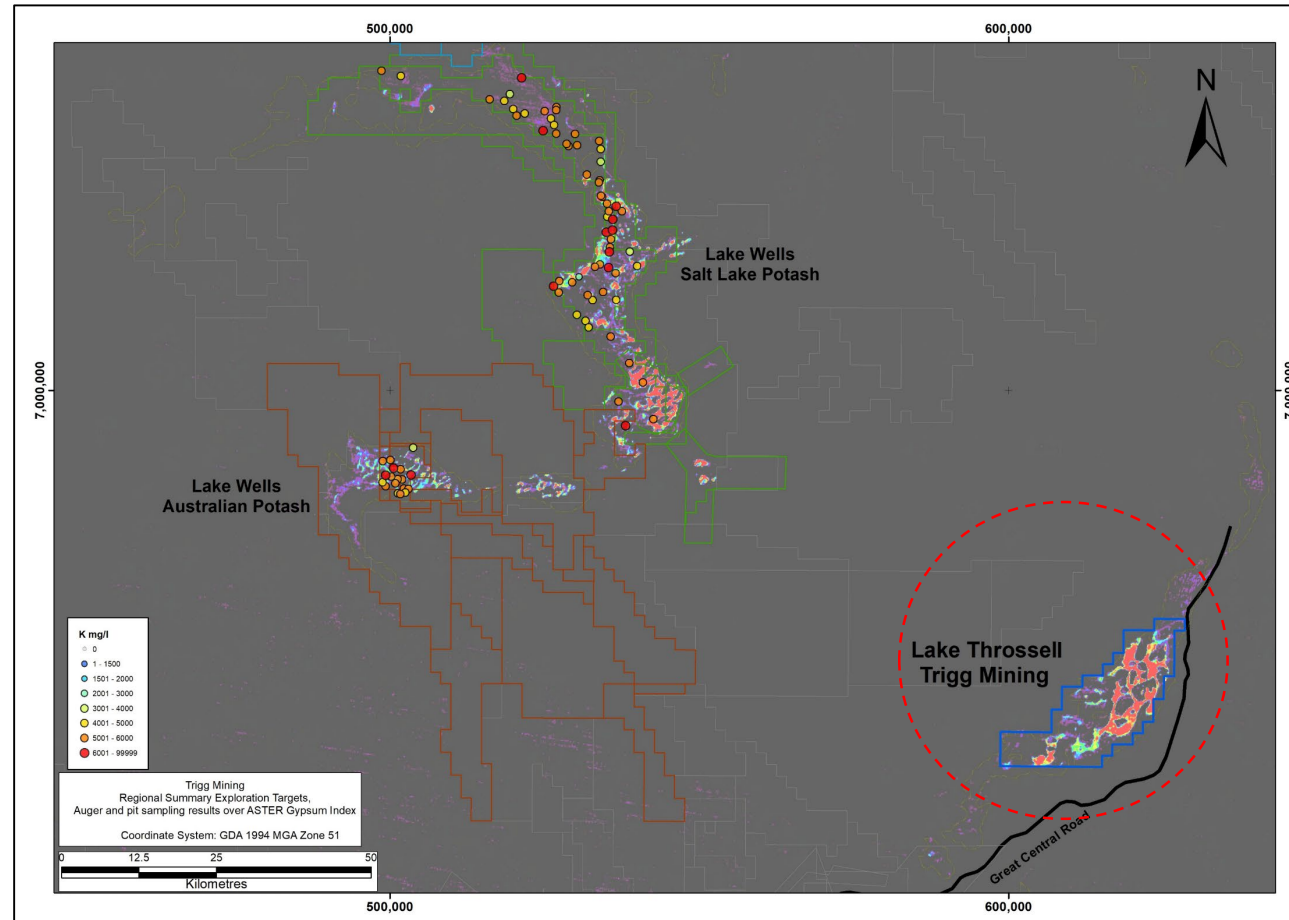


¹ Australian Geoscience, A Review of Australian Salt Lakes and Assessment of their Potential for Strategic Resources, 2013

ASTER Gypsum Index imagery indicates strong brine potential¹

ASTER GYPSUM INDEX

- Strong, consistent gypsum index indicated by ASTER imagery:
 - Observed relationship in the region to brine intensity.
 - May prove to be a useful tool for the characterisation of salt lakes and their mineralisation potential.²
- Similar in intensity to Salt Lake Potash's southern Lake Wells area & a stronger response than Australian Potash's Lake Wells area³.
- Auger sampling required to confirm relationship to brine concentrations.



¹ Department of Mines, Industry Regulation and Safety Imagery Web Map Service.

² Australian Geoscience, A Review of Australian Salt Lakes and Assessment of their Potential for Strategic Resources, 2013; p128.

³ Compiled ASX releases data from Salt Lake Potash (5/4/15, 22/2/16) and Australian Potash (26/8/15, 23/3/17).

Laverton Links Sulphate of Potash Project

- ✓ Assay results from across the project, covering some 270 km of palaeochannels and over 240 km² of playa lakes.
- ✓ An initial Mineral Resource estimate expected for Lake Rason.
- ✓ An initial Mineral Resource estimate expected for Lake Hope Campbell.
- ✓ Define the perspective of East Laverton.

Lake Throssell Sulphate of Potash Project

- ✓ Heritage survey across the lake completed, paving the way forward for exploration.
- ✓ Assay results from first ever sampling program.

*Trigg Mining, building mines communities
can be proud of*



DISCLOSURES AND DISCLAIMERS

Cautionary Statement

This presentation (Presentation) is for informational purposes only and is not a prospectus, disclosure document or offer document under the Corporations Act 2001 (Cth) (Corporations Act) or any other law. This Presentation does not constitute, and is not to be construed as, an offer to issue or sell, or a solicitation of an offer or an invitation to subscribe for, buy or sell securities in Trigg Mining Limited ACN 168 269 752 (TMG).

This Presentation does not contain, and does not purport to contain, all information that recipients may require to make an informed assessment of TMG or its securities. Statements in this Presentation are made only as at the date of this Presentation unless otherwise stated and remain subject to change without notice. Neither TMG nor any of its directors, officers, employees, agents or consultants makes any representation or warranty, express or implied, as to the fairness, reliability, accuracy or completeness of the information contained in this Presentation, or as to any omission from this Presentation. To the maximum extent permitted by law, each such person disclaims any liability (including by reason of negligence or negligent misstatement) in relation to this Presentation, the information contained in it, or any omissions from it. To the maximum extent permitted by law, each such person also disclaims any responsibility to inform any recipient on any matter which subsequently comes to their notice which may affect the information contained in this Presentation, and undertakes no obligation to provide any additional or updated information whether as a result of new circumstances, future events or results or otherwise.

Forward Looking Statements

This Presentation contains 'forward-looking information' that is based on TMG's expectations, estimates and projections as of the date on which the statements were made. This forward-looking information includes, among other things, statements with respect to prefeasibility and definitive feasibility studies, TMG's business strategy, plans, development, objectives, performance, outlook, growth, cash flow, projections, targets and expectations, mineral reserves and resources, results of exploration and related expenses. Generally, this forward-looking information can be identified by the use of forward-looking terminology such as 'outlook', 'anticipate', 'project', 'target', 'potential', 'likely', 'believe', 'estimate', 'expect', 'intend', 'may', 'would', 'could', 'should', 'scheduled', 'will', 'plan', 'forecast', 'evolve' and similar expressions. Persons reading this Presentation are cautioned that such statements are only predictions, and that TMG's actual future results or performance may be materially different. Forward-looking information is subject to known and unknown risks, uncertainties and other factors that may cause TMG's actual results, level of activity, performance or achievements to be materially different from those expressed or implied by such forward-looking information. Forward-looking information is developed based on assumptions about such risks, uncertainties and other factors set out herein, including but not limited to the risk factors set out in Section 13 of the prospectus dated 24 April 2019. A copy of the prospectus may be viewed online at www.triggmining.com.au

Exploration Target

An Exploration Target is not a Mineral Resource. The potential quantity and grade of the Exploration Target is conceptual in nature. There has been insufficient exploration to estimate a Mineral Resource and it is uncertain if further exploration will result in the estimation of a Mineral Resource.

Competent Person Statement

The Exploration Results for the Laverton Links Project and Exploration Target for the Lake Rason Prospect is based on information compiled by Mr Duncan Gareth Storey is a Chartered Geologist and a Fellow of the Geological Society of London (a Recognised Professional Organisation under the JORC Code). Mr Storey is a Director and Consulting Hydrogeologist with AQ2 Pty Ltd, an independent consulting company.

Mr Storey has sufficient experience, which is relevant to the style of mineralisation and type of deposit under consideration and to the activity, which he is undertaking to qualify as a Competent Person as defined in the 2012 Edition of the 'Australasian Code for Reporting of Exploration Results, Mineral Resources and Ore Reserves'. Mr Storey consents to the inclusion in the Prospectus of the matters based on his information in the form and context in which it appears. TMG confirms that it is not aware of any new information or data that materially affects the information included in the Prospectus and in the case of the Exploration Target, that all material assumptions and technical parameters underpinning it in the Prospectus continue to apply and have not materially changed. The company confirms that the form and context in which the Competent Person's findings are presented have not been materially modified from the Prospectus.

APPENDIX - EXPLORATION TARGET

An Exploration Target has been estimated at Lake Rason by Trigg Mining's hydrogeological consultants, AQ2 Pty Ltd (see Competent Person Statement - Slide 16), in accordance with the guidelines of the 2012 edition of the JORC Code, based on the results of Trigg Mining work and that of other explorers.

An Exploration Target is a statement of the exploration potential of a mineral deposit in a defined geological setting, quoted as a range of tonnes and a range of grades for which there has been insufficient exploration to estimate a Mineral Resource and that such a target does not in any way constitute a Mineral Resource Estimate, as defined by the JORC Code and is entirely conceptual in nature.

Unit	Aquifer volume (Mm ³)	Specific yield (%)		Potentially drainable brine (Mm ³)		SOP grade (kg/m ³)			SOP (Mt)	
		Min.	Max.	Min.	Max.	-1 δ	\bar{x}	+1 δ	Min.	Max.
Surficial aquifer	2,000	8	12	200	300	4.35	5.34	6.33	0.8	1.8
Mixed aquitard	5,000	2	10	100	500				0.5	3.4
Silcrete aquifer	300	5	15	20	50				0.1	0.3
Basal sand aquifer	1,000	15	25	200	300				0.8	1.9
Saprolite aquifer	4,000	1	2	40	80	2.05	3.72	5.38	0.1	0.5
Saprock aquifer	7,000	2	3	100	200				0.3	1.1
									2.5	9.0

Notes:

- Numbers are rounded.
- Aquifer volume for each hydrostratigraphic unit from Leapfrog model.
- Min and max Specific Yield (from estimates, peers and published work).
- Min grade based on 1 standard deviation lower than mean.
- Max grade based on 1 standard deviation above mean.
- Grade statistics calculated for transported material and basement material respectively and based on all hydrostratigraphic units within each type (following review of grade distribution with depth).
- Conversion to SOP based on $K \text{ (mg/L)} \times 2.23$.