



Explorer & Miner



ASX: AZS



@AzureMinerals

www.azureminerals.com.au

Annual General Meeting
26 November 2019

Tony Rovira
Managing Director
Azure Minerals Ltd

Disclaimer – Forward Looking Statements

This presentation has been prepared by Azure Minerals Limited. It contains background information about Azure Minerals Limited current at the date of this presentation. The presentation is in summary form and does not purport be all inclusive or complete. Recipients should conduct their own investigations and perform their own analysis in order to satisfy themselves as to the accuracy and completeness of the information, statements and opinions contained in this presentation.

This presentation is for information purposes only. Neither this presentation nor the information contained in it constitutes an offer, invitation, solicitation or recommendation in relation to the purchase or sale of shares in any jurisdiction.

This presentation may not be distributed in any jurisdiction except in accordance with the legal requirements applicable in such jurisdiction. Recipients should inform themselves of the restrictions that apply in their own jurisdiction. A failure to do so may result in a violation of securities laws in such jurisdiction.

This presentation does not constitute investment advice and has been prepared without taking into account the recipient's investment objectives, financial circumstances or particular needs and the opinions and recommendations in this presentation are not intended to represent recommendations of particular investments to particular persons. Recipients should seek professional advice when deciding if an investment is appropriate. All securities transactions involve risks, which include (among others) the risk of adverse or unanticipated market, financial or political developments.

To the fullest extent permitted by law, Azure Minerals Limited, its officers, employees, agents and advisers do not make any representation or warranty, express or implied, as to the currency, accuracy, reliability or completeness of any information, statements, opinions, estimates, forecasts or other representations contained in this presentation. No responsibility for any errors or omissions from this presentation arising out of negligence or otherwise is accepted.

This presentation may include forward-looking statements. Forward-looking statements are only predictions and are subject to risks, uncertainties and assumptions which are outside the control of Azure Minerals Limited. Actual values, results or events may be materially different to those expressed or implied in this presentation. Given these uncertainties, recipients are cautioned not to place reliance on forward looking statements. Any forward looking statements in this presentation speak only at the date of issue of this presentation. Subject to any continuing obligations under applicable law and the ASX Listing Rules, Azure Minerals Limited does not undertake any obligation to update or revise any information or any of the forward looking statements in this presentation or any changes in events, conditions or circumstances on which any such forward looking statement is based.





**Alacrán
Ag-Au-Cu**

Panchita

SONORA

ALACRÁN

Oso Negro

El Tecolote

OPOSURA

CHIHUAHUA

**Oposura
Zn-Pb-Ag**

Hermosillo

Chihuahua City

Port of Guaymas

Promontorio

Sara Alicia

Azure office

DURANGO

Torreón

San Agustin

USA

MEXICO

Mexico City

Port of Manzanillo

Telix

OAXACA

NORTHERN MEXICO FOCUS

Safe, stable, supportive jurisdiction

Tier 1 mining province

>500 years of mining history

Strong mining culture

Competitive tax rates

0 500km

Unique position with precious & base metal resources

Alacrán: silver & gold

JORC resources¹: **32Moz Ag & 150,000oz Au**

Includes High Grade resource at surface of:

- **15.5 million ounces Silver @ 275g/t Ag**

Oposura: zinc, lead & silver

JORC resources²: **153,000t Zn & 84,000t Pb**

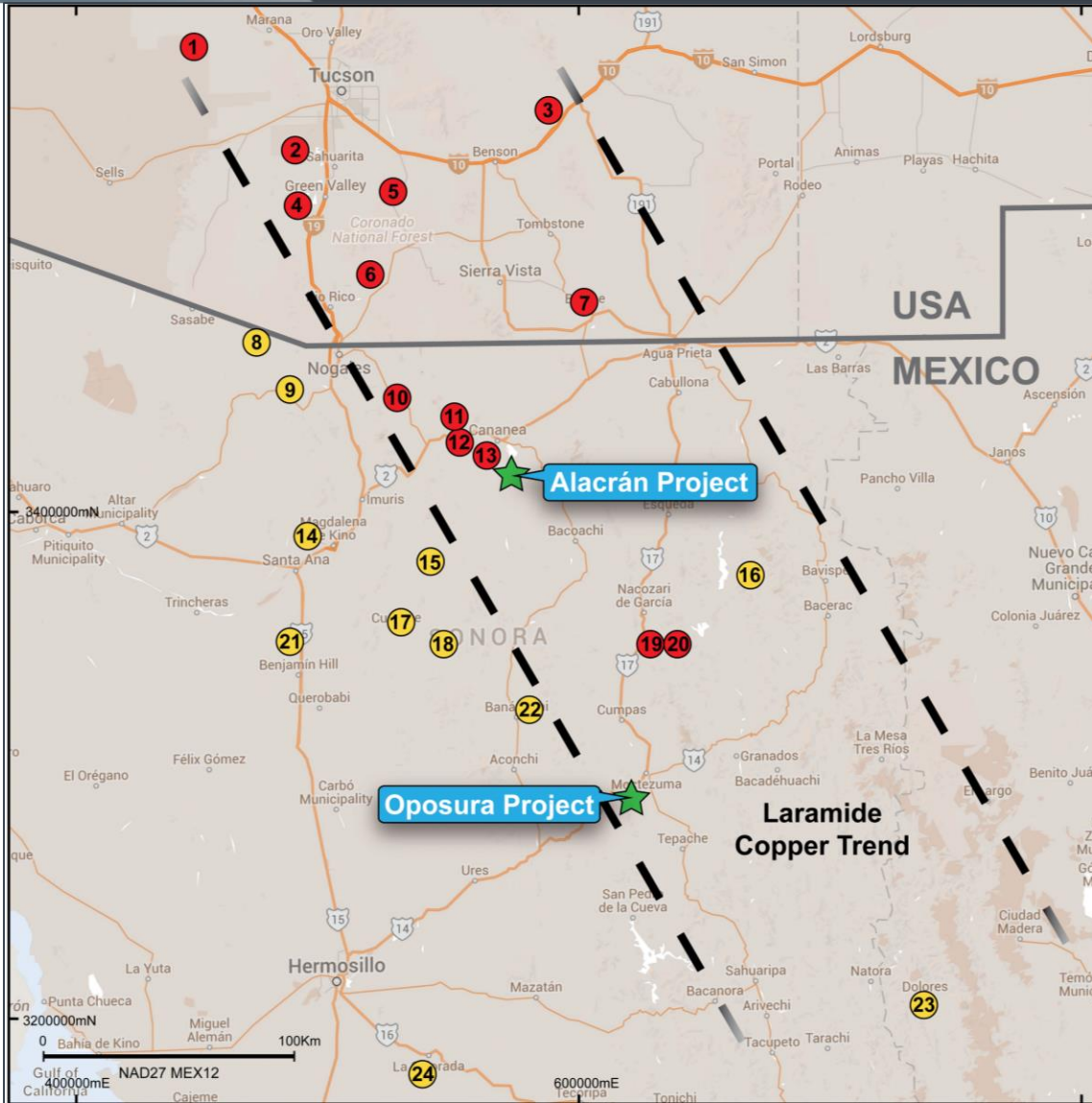
Small-scale mining³: **6,100t @ 13.4% Zn & 10.7% Pb**



Cash flow in Q1 2020

1. Refer ASX 1 December 2016 & 21 December 2016
2. Refer ASX 8 May 2019
3. Refer ASX 23 September 2019

Projects located in a Tier 1 mining district



Sonora-Arizona

Gold-Silver Mines / Deposits



Copper Mines / Deposits



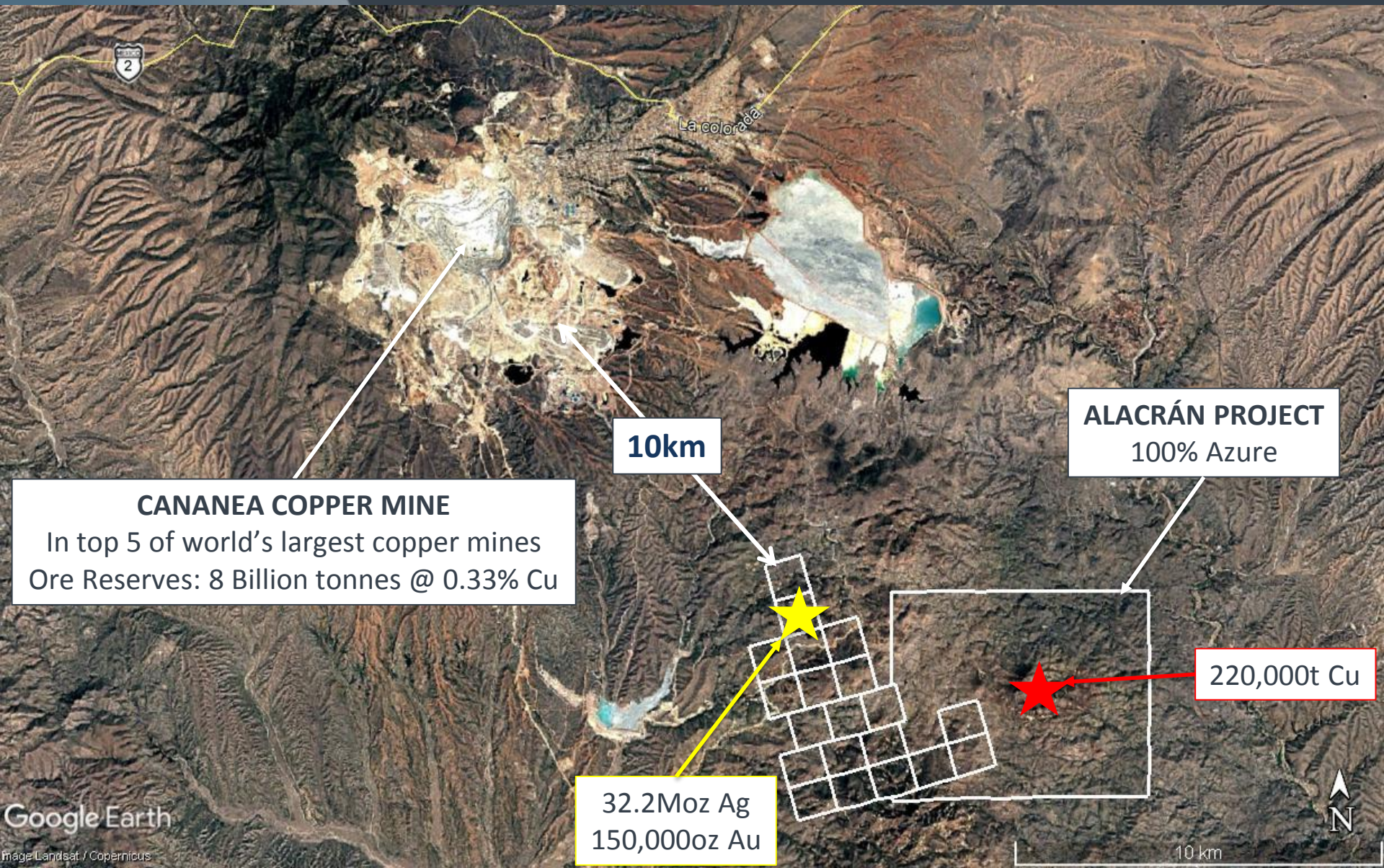
Azure Minerals Project



- 1 Silver Bell (ASARCO)
- 2 Mission (ASARCO)
- 3 Johnson Camp (Excelsior)
- 4 Sierrita (Freeport-McMoRan)
- 5 Rosemont (Hudbay)
- 6 Red Mountain (Kerr-McGee)
- 7 Bisbee (Phelps Dodge)
- 8 La Bolsa (Pan American)
- 9 Planchas de Plata (Pan American)
- 10 El Pilar (Grupo México)
- 11 Milpillitas (Peñoles)
- 12 Maria (Minera Frisco)
- 13 Cananea (Grupo México)
- 14 Lluvia de Oro - La Jojoba (NWM)
- 15 Santa Gertrudis (GoGold)
- 16 El Tigre (El Tigre Silver)
- 17 Cerro Prieto (Goldgroup)
- 18 Mercedes (Premier Gold)
- 19 Pilares (Grupo México)
- 20 La Caridad (Grupo México)
- 21 San Francisco (Timmins Gold)
- 22 Santa Elena (First Majestic)
- 23 Dolores (Pan American)
- 24 La Colorada (Argonaut Gold)



Alacrán: the best of locations



La colorada

2

10km

ALACRÁN PROJECT
100% Azure

CANANEA COPPER MINE
In top 5 of world's largest copper mines
Ore Reserves: 8 Billion tonnes @ 0.33% Cu

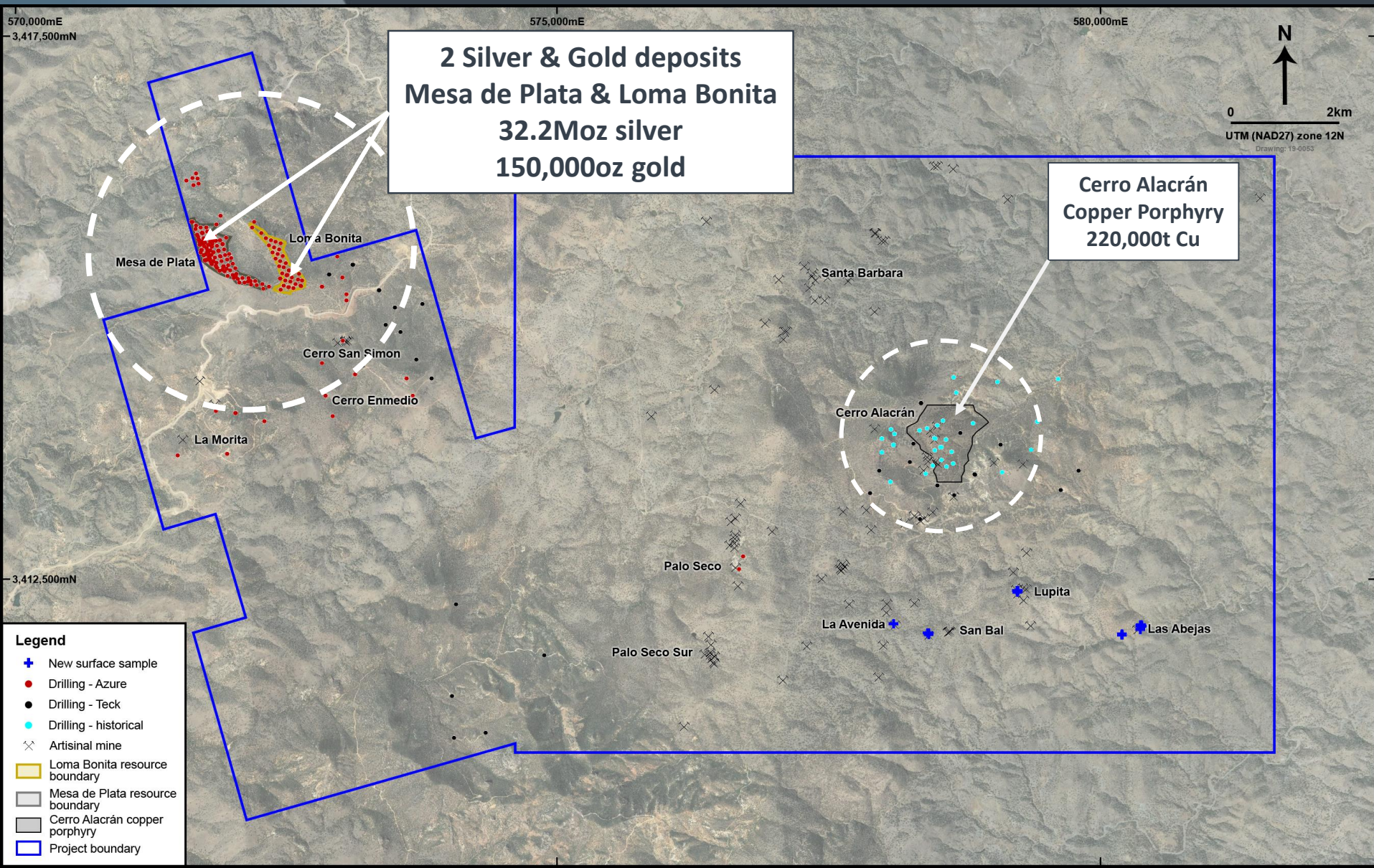
220,000t Cu

32.2Moz Ag
150,000oz Au

10 km



Azure's silver & gold discoveries

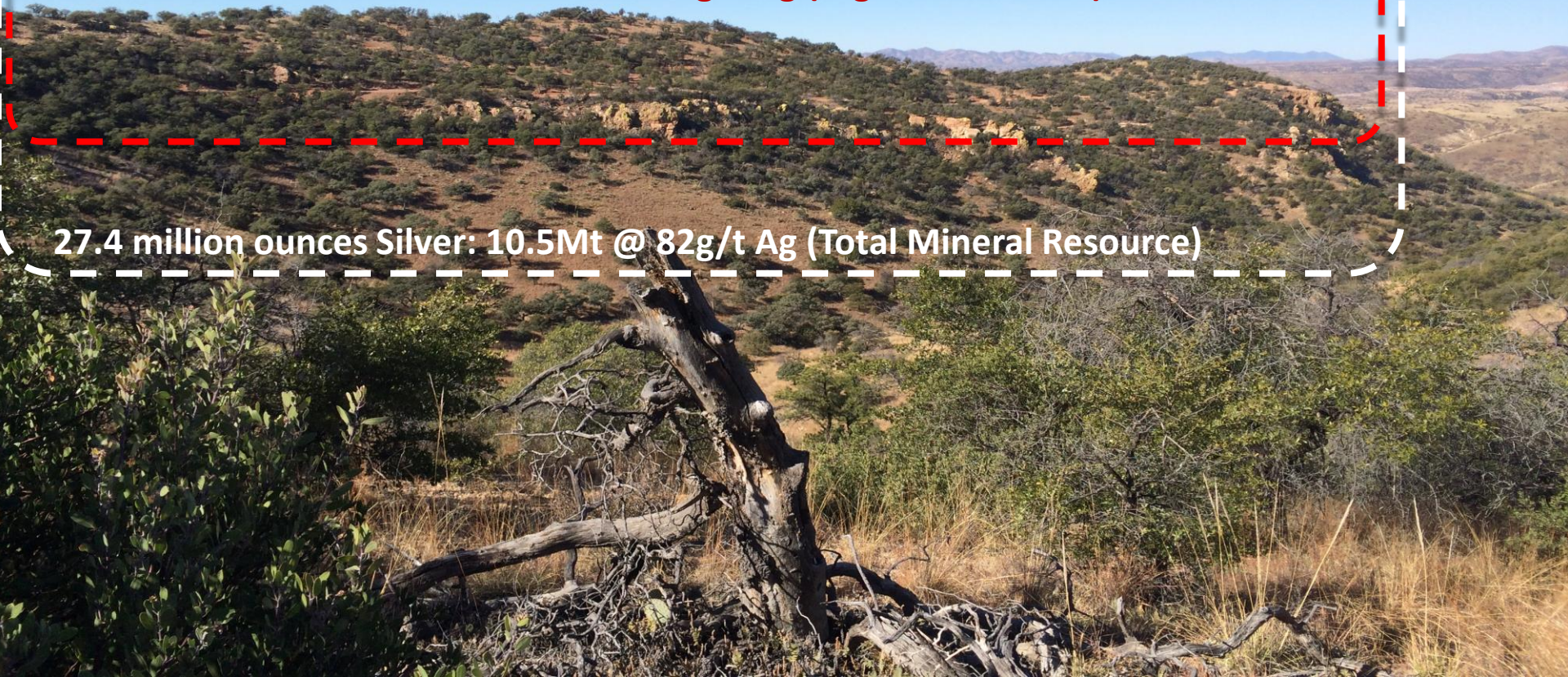


Hilltop silver & gold deposits

Mesa de Plata

15.5 million ounces Silver: 1.8Mt @ 275g/t Ag (High-Grade Zone)

27.4 million ounces Silver: 10.5Mt @ 82g/t Ag (Total Mineral Resource)



Significant practical advantages

High-grade hilltop deposits

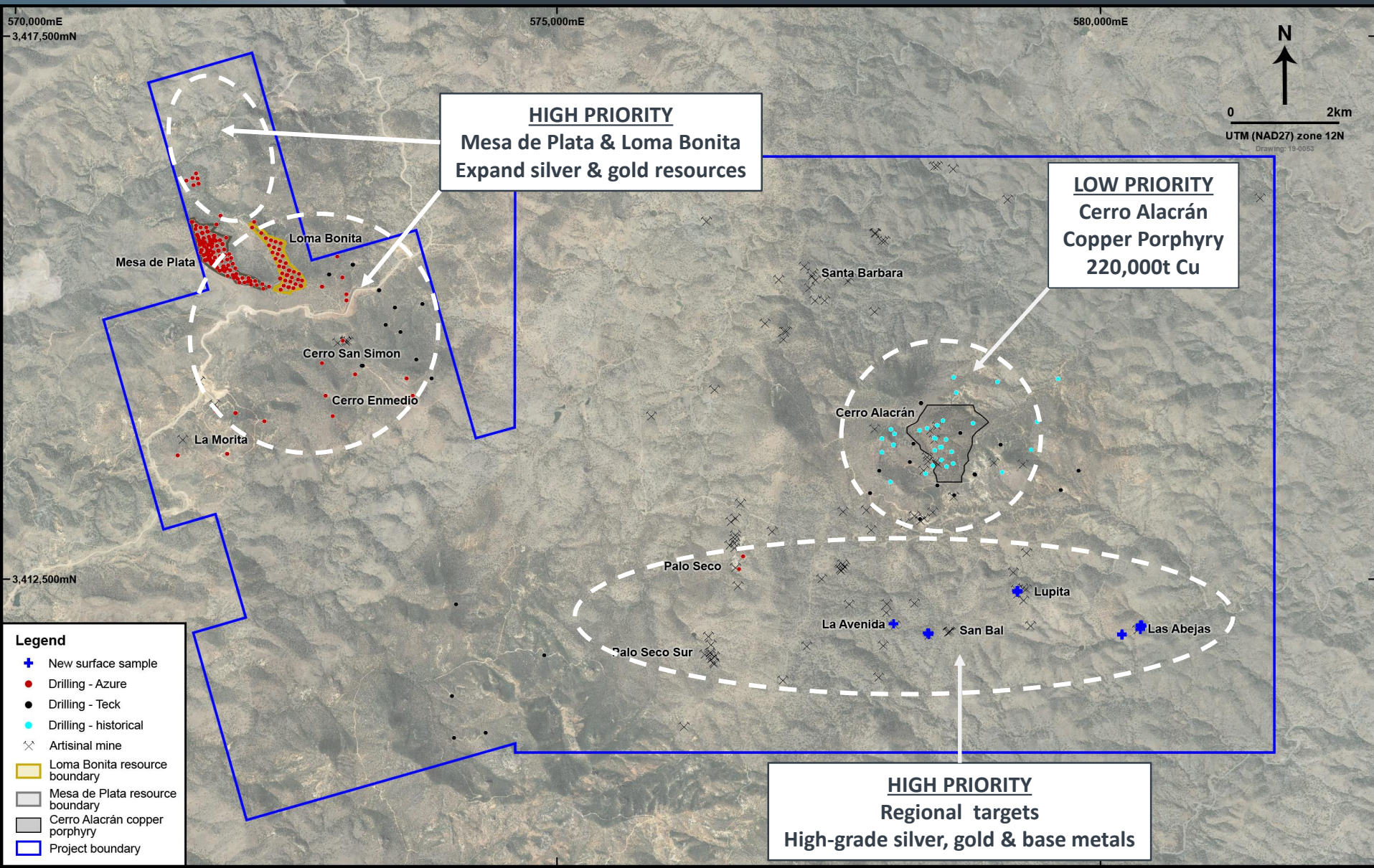
No overburden = simple open pit mining

Favourable metallurgy

Amenable to flotation, heap leach and CIL extraction

Potential low cost, highly profitable mining operation

Priority targets



Alacrán: Near-term upside catalysts

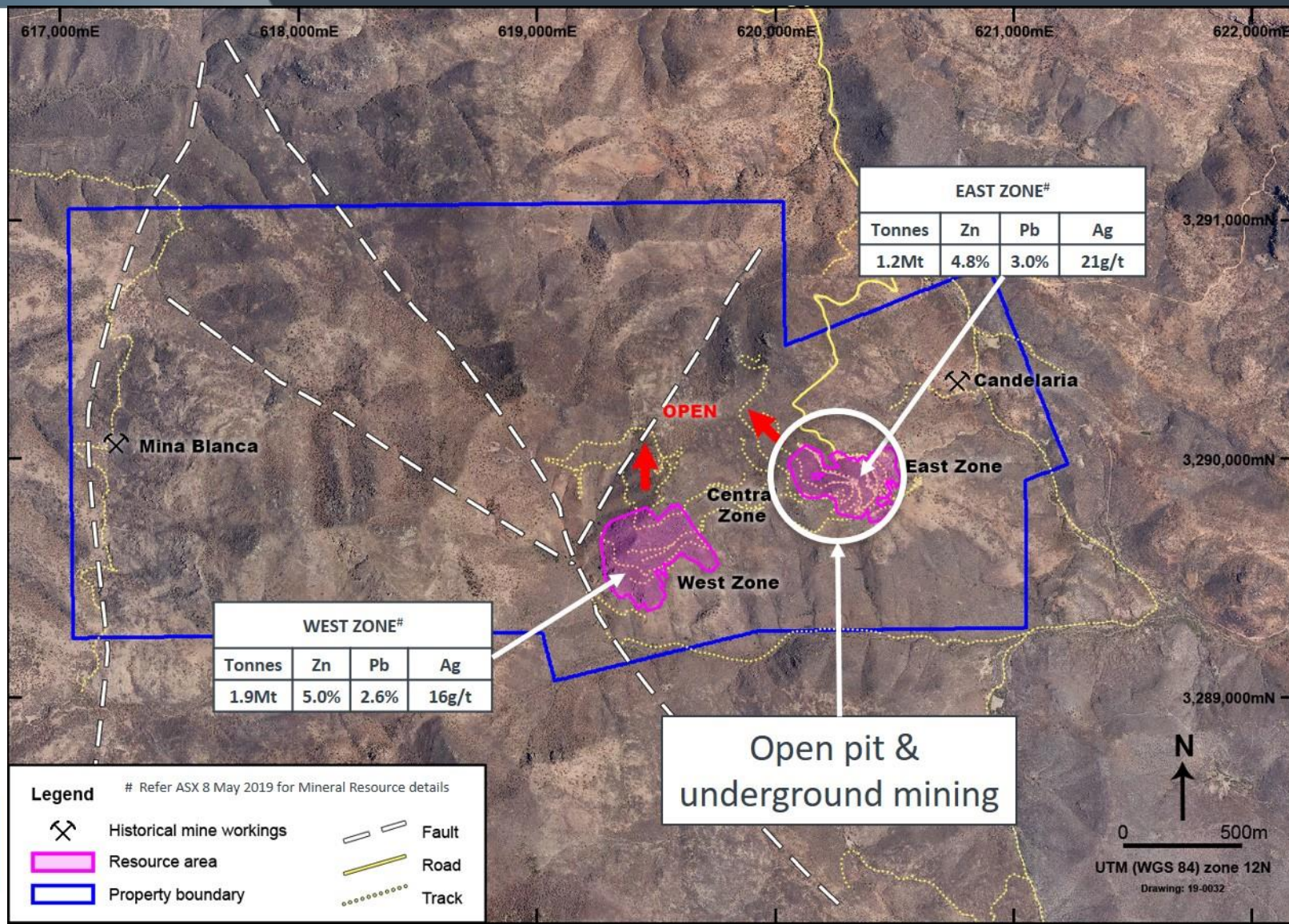
Drilling to expand mineral resources at Loma Bonita & Mesa de Plata

Drill high-priority, high-grade silver & gold targets generated by greenfields exploration

Restart development (metallurgical) studies for Loma Bonita & Mesa de Plata



Oposura zinc-lead-silver deposit



Oposura development time-line

- Acquired: ✓ August 2017
- Mineral Resource: ✓ July 2018
- PEA / Scoping Study: ✓ October 2018
- Resource update: ✓ May 2019
- Small-scale mining: ✓ Phase 1 complete
- Processing: started November 2019
- Cash flow: Q1 2020

Key highlights

JORC resource = **3.1Mt @ 5.0% Zn 2.7% Pb 18g/t Ag¹**

Near-surface, high-grade massive sulphide deposit

Simple geology, simple mining & simple metallurgy

Fully permitted for small-scale mining & processing

1st phase mining completed²:

- **6,100t @ 13.4% Zn & 10.7%Pb**
- Includes: **2,100t @ 24.0% Zn & 18.3% Pb²**



1. Refer ASX 8 May 2019
2. Refer ASX 23 September 2019

Successful open pit mining



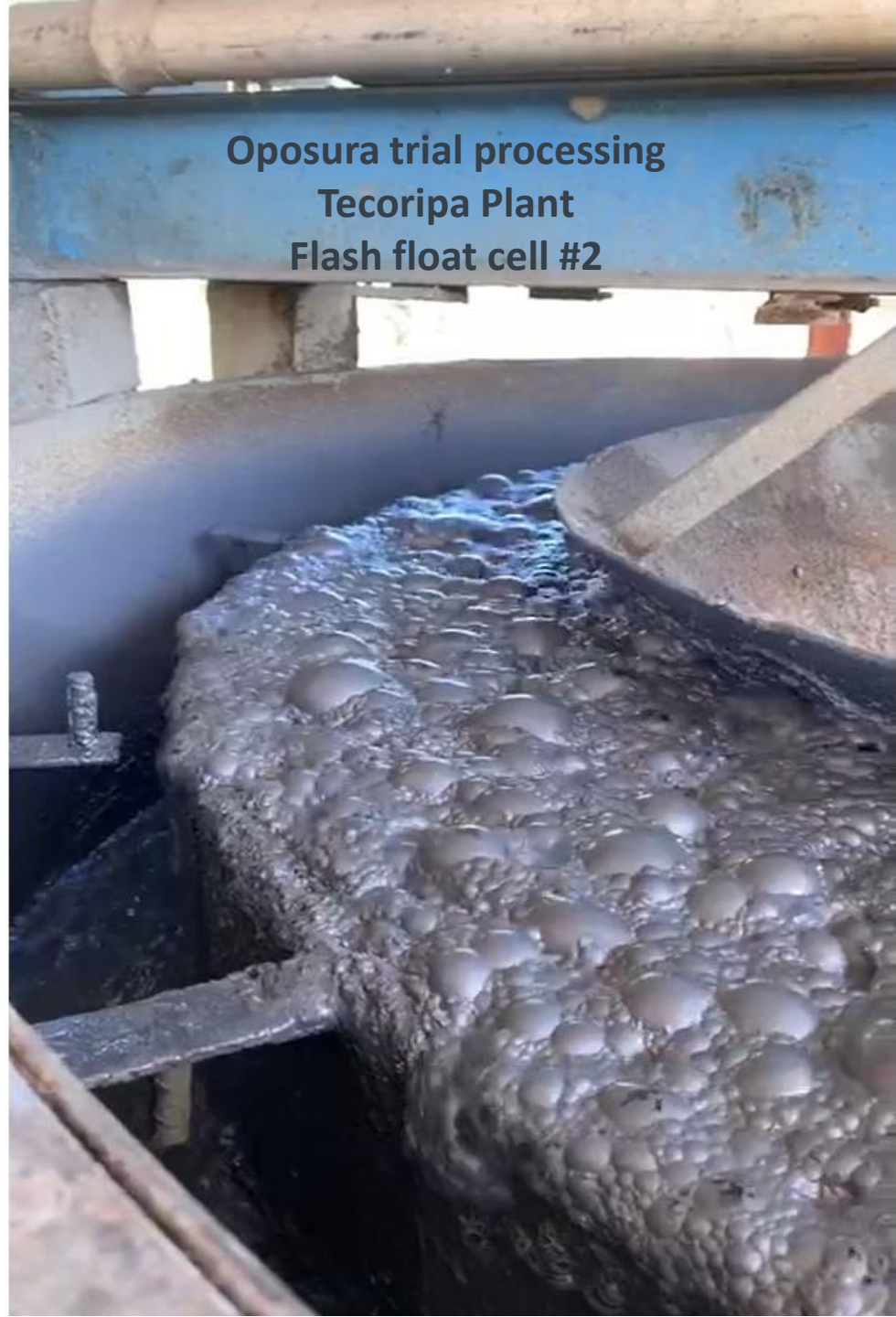


Mining of massive sulphides: +40% ZnEq

Oposura trial processing
Tecoripa Plant
Flash float cell #1



Oposura trial processing
Tecoripa Plant
Flash float cell #2



Azure: a positive & exciting future

Grow silver & gold resources at **Alacrán**

Advance **Alacrán** with more development studies

Follow-up new **Alacrán** high-grade silver and gold targets

Cash flow from small-scale mining at **Oposura** in Q1 2020





Thank you



For enquiries, please contact:
Tony Rovira, Managing Director
admin@azureminerals.com.au

Experienced Management & Technical Team

MANAGING DIRECTOR: Tony Rovira

Exploration & mining geologist with extensive corporate experience
Founding Managing Director & CEO of Azure Minerals in 2003
Discovered 3 gold & 2 nickel deposits in Australia which became operating mines
Australian Prospector of the Year in 2000

CHIEF FINANCIAL OFFICER: Brett Dickson

Significant hands-on experience in financial management of public companies

CHIEF OPERATING OFFICER: Glenn Jardine

Mining engineer with +30 years experience in feasibility, development & mine operations
4 years with Azure in Mexico developing Alacrán & Oposura projects

VP - EXPLORATION: Brent Hendrickson

Geologist with +30 years experience in Latin America & fluent in Spanish
Led Azure's team to discover / define 5 precious & base metal deposits in Mexico

CHIEF GEOLOGIST: Cruz Paez

Local geologist with +20 years experience in exploration & mining geology
Significant hands-on technical & senior project management experience
Community relations specialist



Appendix 1: Alacrán Mineral Resource Estimate

Table 1: Mesa de Plata Mineral Resource (ASX: 1 December 2016)

Zone	Measured Mineral Resource			Indicated Mineral Resource			Total Mineral Resource		
	Tonnes (Mt)	Silver		Tonnes (Mt)	Silver		Tonnes (Mt)	Silver	
		(g/t Ag)	(Moz)		(g/t Ag)	(Moz)		(g/t Ag)	(Moz)
High Grade	1.2	307.4	12.0	0.5	201.7	3.5	1.8	274.7	15.5
Mid-Grade	8.4	43.0	11.7	0.3	36.2	0.3	8.7	42.8	12.0
Total	9.6	76.2	23.6	0.8	145.4	3.8	10.5	81.6	27.4

Table 2: Loma Bonita Mineral Resource (ASX: 21 December 2016)

Cut-Off Grade (g/t Au)	JORC Code Classification	Tonnes (Mt)	Gold		Silver	
			(g/t Au)	(kOz)	(g/t Ag)	(Moz)
≥ 0.5	Indicated Mineral Resource	2.9	1.25	116	34	3.1
	Inferred Mineral Resource	0.5	1.0	15	18	0.3
	Total	3.4	1.2	131	32	3.4
≥ 0.21	Indicated Mineral Resource	4.2	0.95	128	30	4.1
	Inferred Mineral Resource	1.2	0.6	22	18	0.7
	Total	5.4	0.9	150	28	4.8

Appendix 2: Oposura Mineral Resource Estimate¹

	Tonnes	Zn	Pb	Ag
JORC	Mt	%	%	g/t
Indicated	2.5	5.3	2.9	19
Inferred	0.6	3.4	2.1	15
TOTAL	3.1	5.0	2.7	18
Contained Metal		153,000t	84,000t	1.8Moz



1. Refer ASX announcement dated 8 May 2019

Competent Person Statements

OPOSURA

Information in this report that relates to Mineral Resources for the Oposura Project is extracted from the report “Azure Expands Oposura Mineral Resource” created and released to the ASX on 8 May 2019 and is available to view on www.asx.com.au. Azure Minerals Limited confirms that it is not aware of any new information or data that materially affects information included in the relevant market announcement, and that all material assumptions and technical parameters underpinning the estimates in the announcement continue to apply and have not materially changed.

Information in this report that relates to the Scoping Study for the Oposura Project is extracted from the report “Oposura Scoping Study Delivers Outstanding Economics” created and released to the ASX on 15 October 2018 and is available to view on www.asx.com.au. Azure Minerals Limited confirms that it is not aware of any new information or data that materially affects information included in the relevant market announcement, and that all material assumptions and technical parameters underpinning the estimates in the announcement continue to apply and have not materially changed.

ALACRÁN

The information in this report that relates to Mineral Resources for the Mesa de Plata and Loma Bonita deposits on the Alacrán Project are extracted from the respective reports “Mesa de Plata Mineral Resource Upgraded” and “Loma Bonita Mineral Resource” created and released to the ASX on 1 December 2016 and 21 December 2016 respectively and are available to view on www.asx.com.au. Azure Minerals Limited confirms that it is not aware of any new information or data that materially affects information included in the relevant market announcement, and that all material assumptions and technical parameters underpinning the estimates in the announcement continue to apply and have not materially changed.

EXPLORATION RESULTS

Information in this report that relates to previously reported Exploration Results has been cross-referenced in this report to the date that it was reported to ASX. Azure Minerals Limited confirms that it is not aware of any new information or data that materially affects information included in the relevant market announcements.



Disclaimer – Scoping Study Cautionary Statement

The Scoping Study (Study) results were released to the ASX on 15 October 2018. The Study was undertaken to determine the potential viability of a combined open pit and underground mine with a conventional crushing, milling and flotation circuit to produce zinc and lead-silver sulphide concentrates onsite at the Oposura Project, and to provide Azure Minerals Limited with the confidence to continue with its ongoing feasibility study. The results should not be considered a profit forecast or a production forecast.

The Study is a preliminary technical and economic study of the potential viability of the Oposura Project. In accordance with the ASX Listing Rules, the Company advises it is based upon low-level technical and economic assessments (+/- 35%) that are not sufficient to support the estimation of Ore Reserves, or to provide assurance of an economic development case at this stage, or to provide certainty that the conclusions of the Study will be realised.

Further evaluation work including infill drilling, metallurgical testwork and appropriate studies are in progress and required before Azure will be in a position to estimate ore reserves and to provide assurance of an economic development case.

In accordance with ASX and ASIC guidance, the Production Target referred to in this announcement is based upon JORC Mineral Resources which are classified as approximately 75% Indicated and 25% Inferred. The Company has concluded that it has reasonable grounds for disclosing this Production Target.

The Study is based upon material assumptions outlined in the ASX announcement dated 15 October 2018. These include assumptions about the availability of funding. While Azure considers all of the material assumptions to be based upon reasonable grounds, there is no certainty that they will prove to be correct or that the range of outcomes indicated by the Study will be achieved.

To achieve the outcomes indicated in the Study, funding in the order of A\$70 million (US\$52.5 million) is likely to be required. Investors should note that there is no certainty that Azure will be able to raise funding when needed. It is also possible funding may only be available on terms that may be dilutive to or otherwise affect the value of Azure's existing shares. It is also possible that Azure could pursue other "value realisation" strategies such as a sale, partial sale or joint venture of the Project. If it does, this could materially reduce Azure's proportionate ownership of the Project.

The Company has concluded it has a reasonable basis for providing the forward-looking statements included in the announcement and believes that it has a reasonable basis to expect it will be able to fund the development of the Project.

Given the uncertainties involved, investors should not make any investment decisions based solely on the results of the Study.

