



Traka Resources Limited

ABN: 63 103 323 173

29 November 2019

Company Announcements Office
ASX Limited
Level 4, 20 Bridge Street
SYDNEY NSW 2000

AGM PRESENTATION

Attached is a copy of a presentation on the Company's activities to be made by the Managing Director at the Company's Annual General Meeting today.

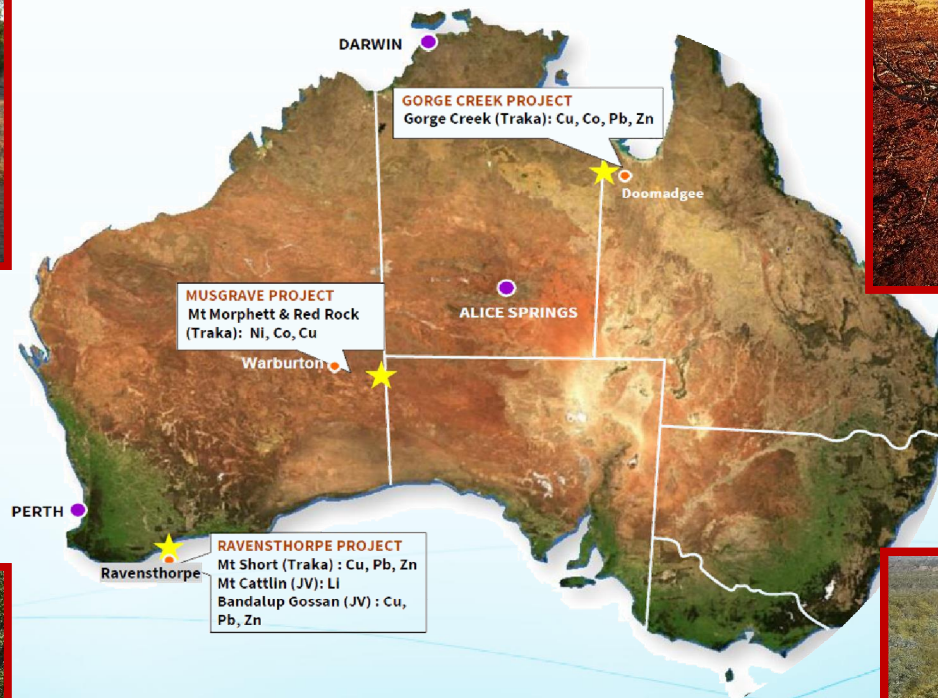
P C Rutledge
Company Secretary

Traka Resources Ltd

(ASX Code – TKL)



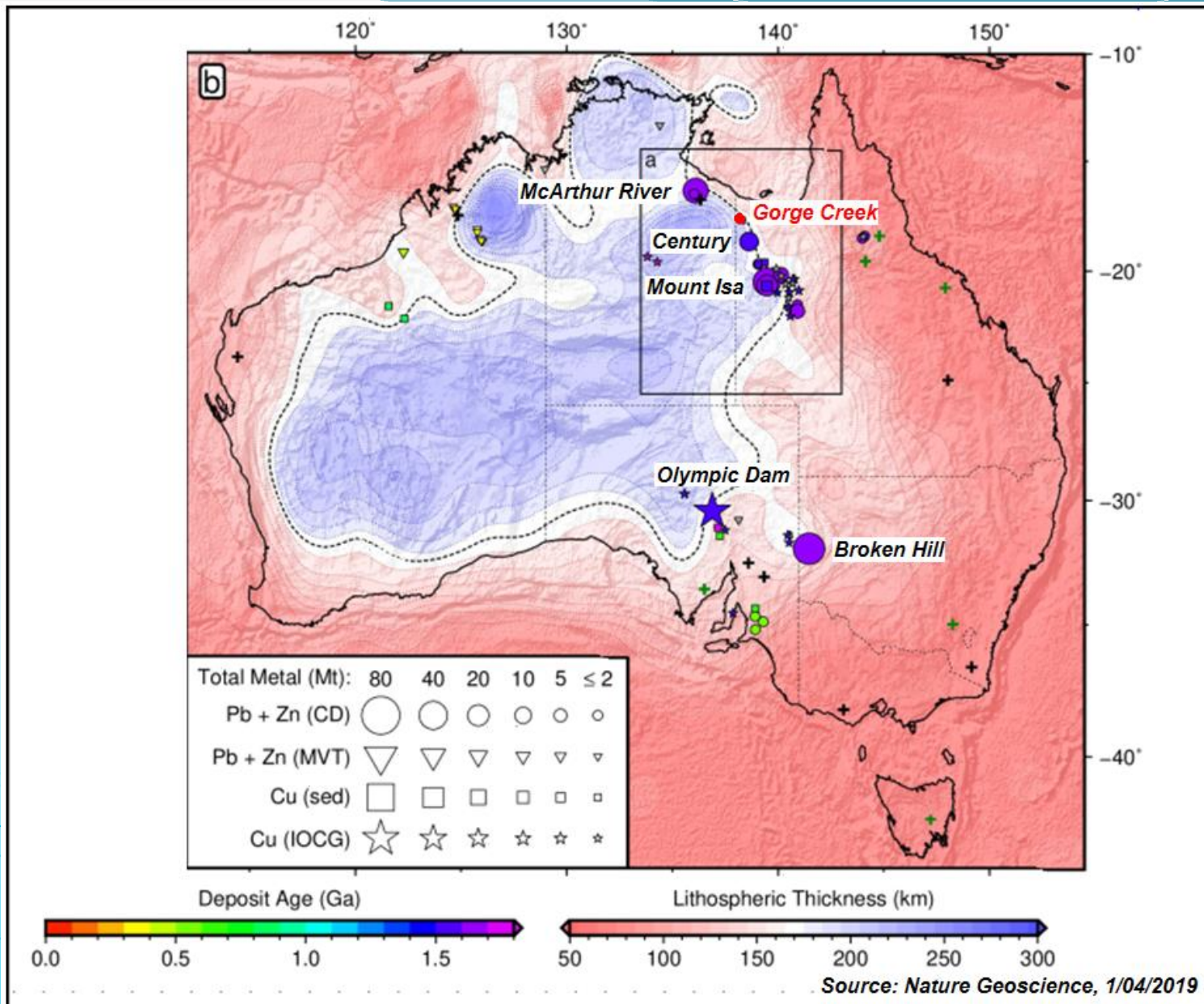
AGM Presentation November 2019



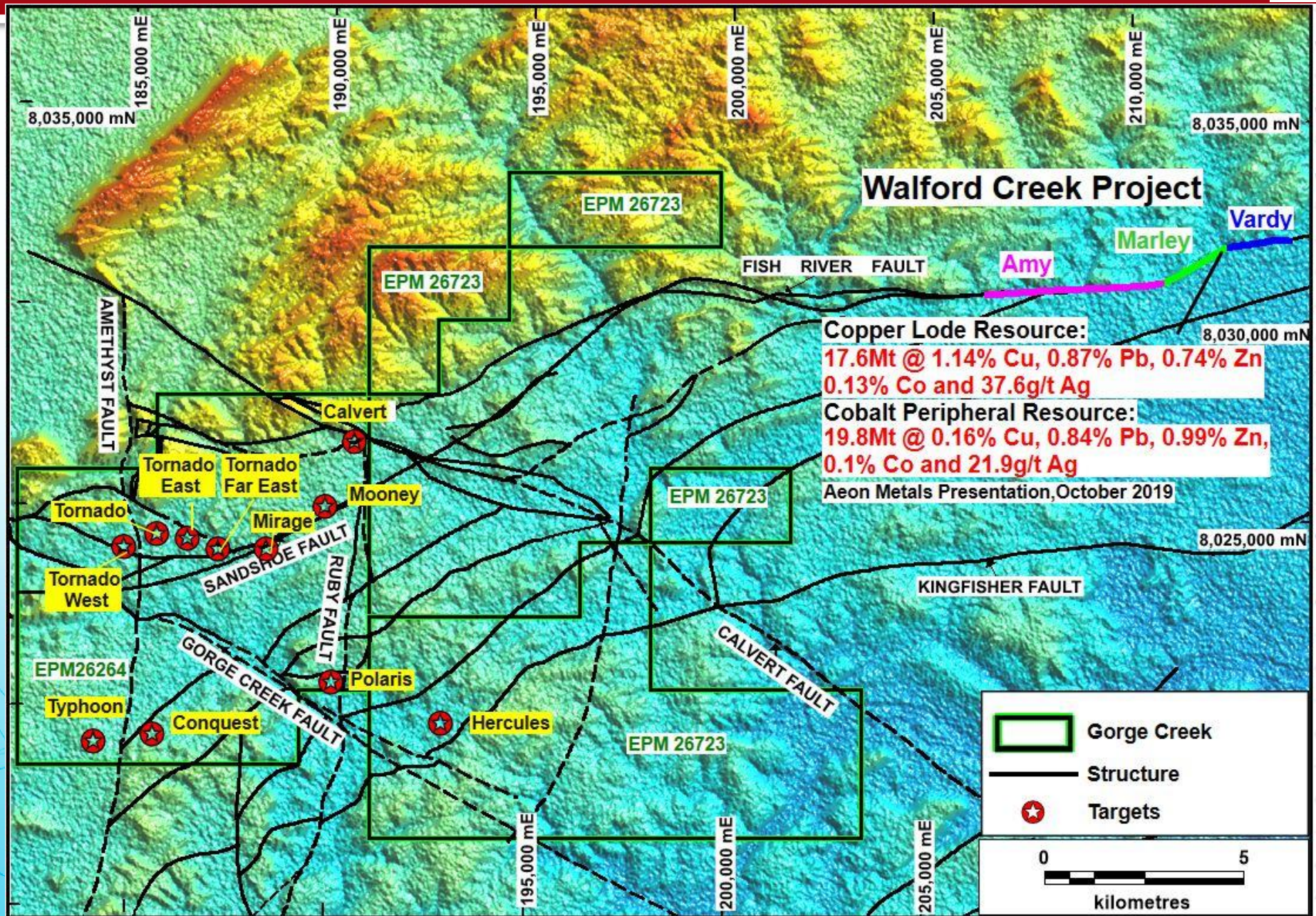
Gorge Creek Project (Cu, Co, Pb and Zn)

- “ A very prospective base metal project with multiple targets to follow-up in next years field season.
- “ MVT (Mississippi Valley Type) targets on the Fish River Fault Zone (FRFZ) for Cu, Co, Pb and Zn mineralisation
- “ Mt Les Siltstone hosted Pb and Zn targets in large flat lying positions adjacent large sedimentary basin faults (Century Mine/McArthur River Mine style mineralisation).
- “ The original Gorge Creek JV dissolved and Traka acquired 100% equity. Facilitation of funding/ third party JV for 2020 field season.
- “ Drilling, gravity and aeromagnetic surveys planned

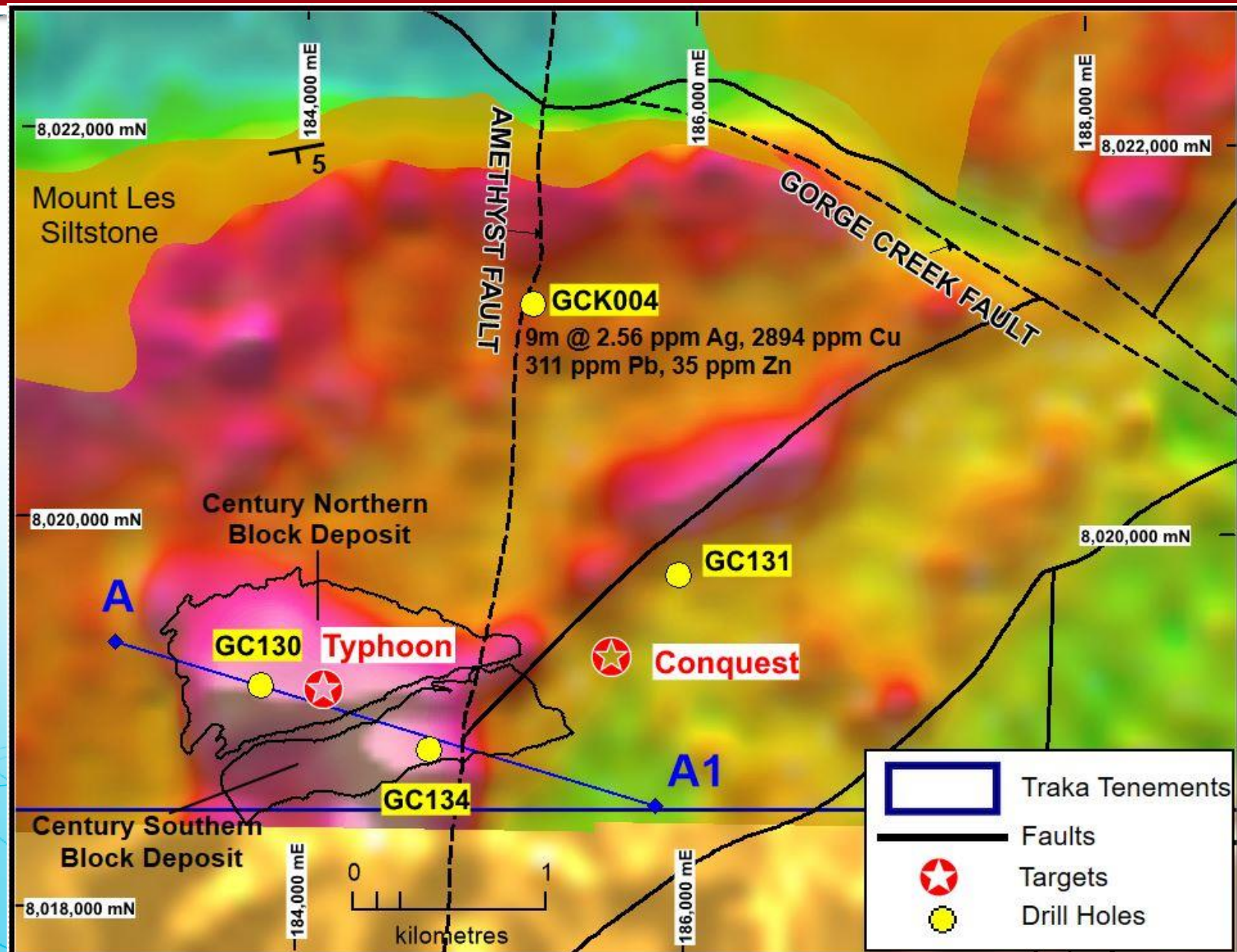
Gorge Creek



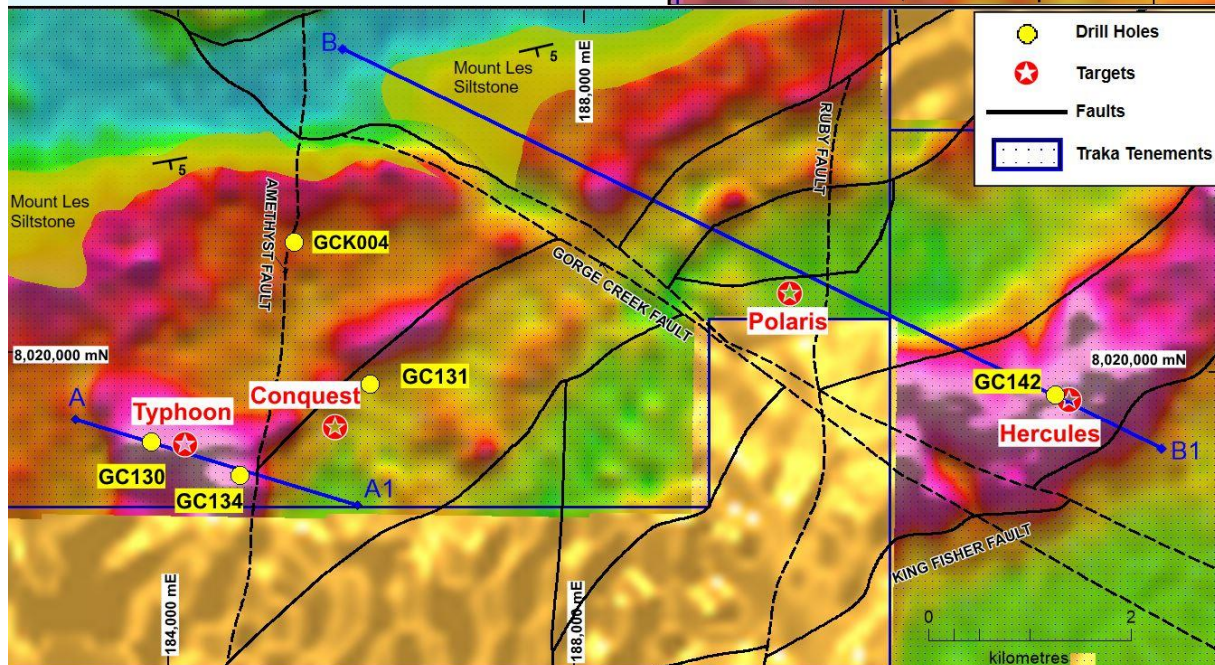
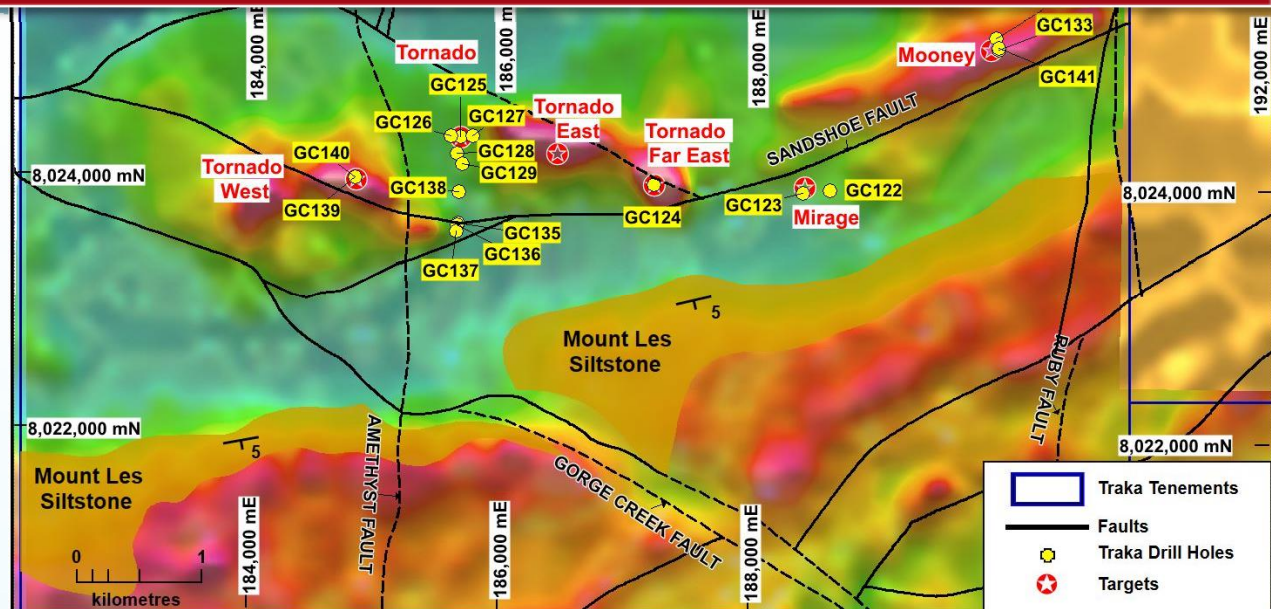
Gorge Creek



Gorge Creek



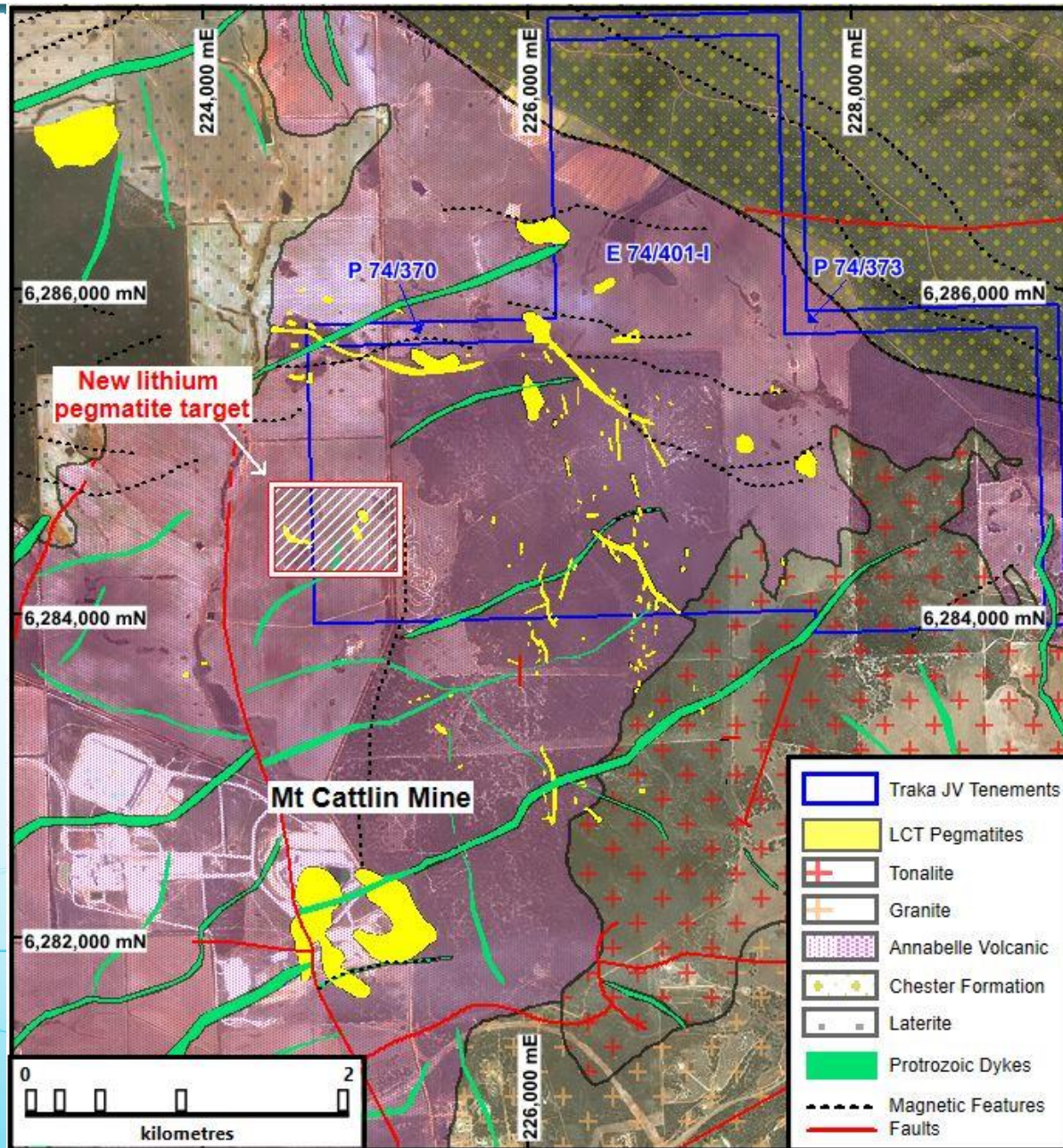
Gorge Creek



Mt Cattlin North Joint Venture (Lithium)

- “ Exploration by Galaxy Resources Ltd on Traka’s 20% Free Carried joint venture interests next to the Mt Cattlin lithium mine.
- “ Lithium bearing pegmatite targets may present opportunities for satellite open pit mining operations.
- “ Hiatus periods of exploration activity with Galaxy’s priorities taking precedence
- “ Gold and copper targets are mixed in with the lithium bearing pegmatites but these remain untested at this point in time.

Mt Cattlin North JV

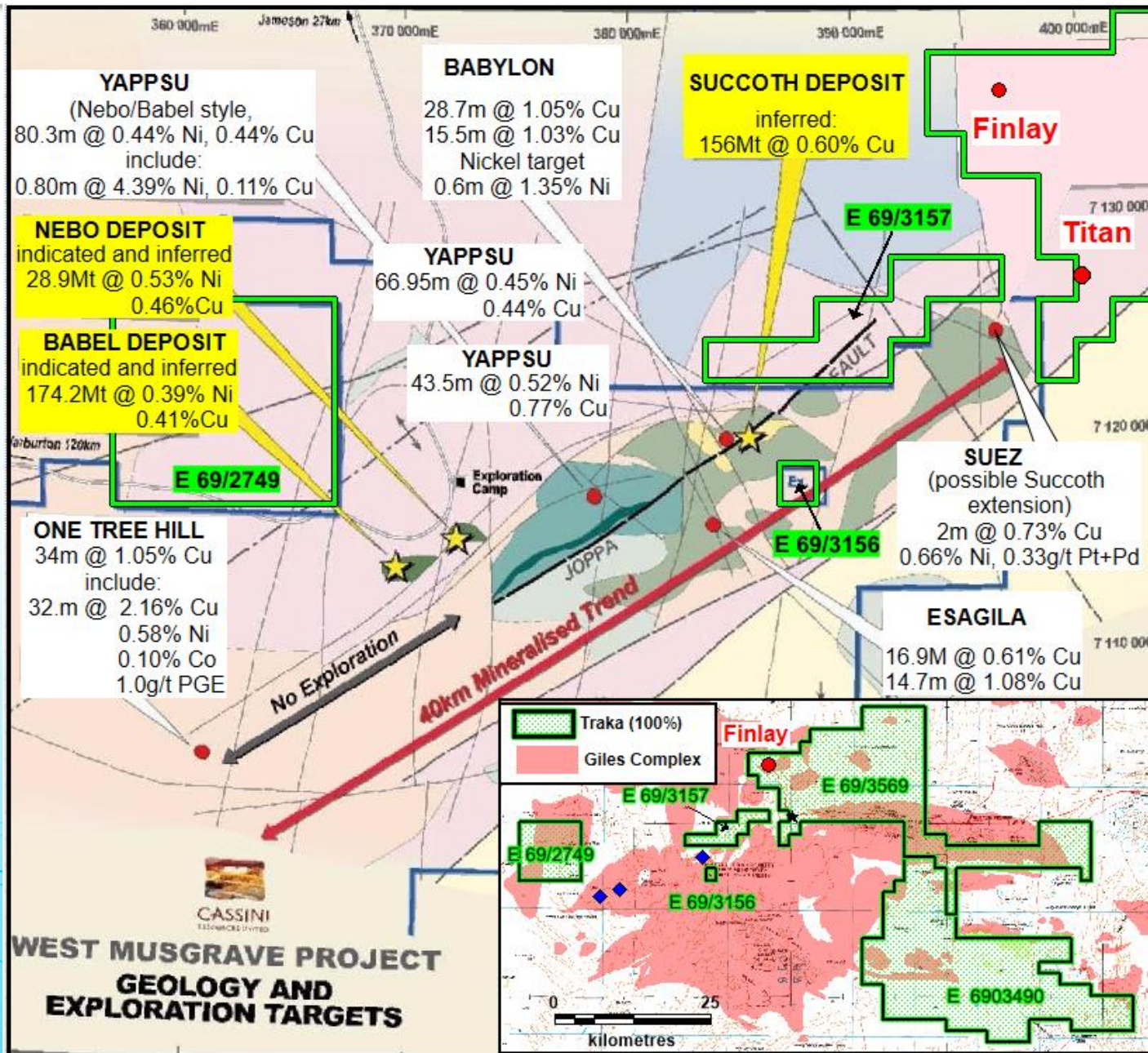


Musgrave Project



- ❖ Key prospective tenements in this very prospective Proterozoic aged terrain
- ❖ Tenements adjacent Oz Minerals PFS underway on Babel Nebo
- ❖ Protracted delays in getting land access is preventing Traka's progress
- ❖ Mt Morphett has \$150k EIS drill funding available up to June 2020
- ❖ Araplat anomaly - 12 km long Cu, Ni, Co and PGE soil geochemical anomaly. Largest untested anomaly in west Musgrave region.

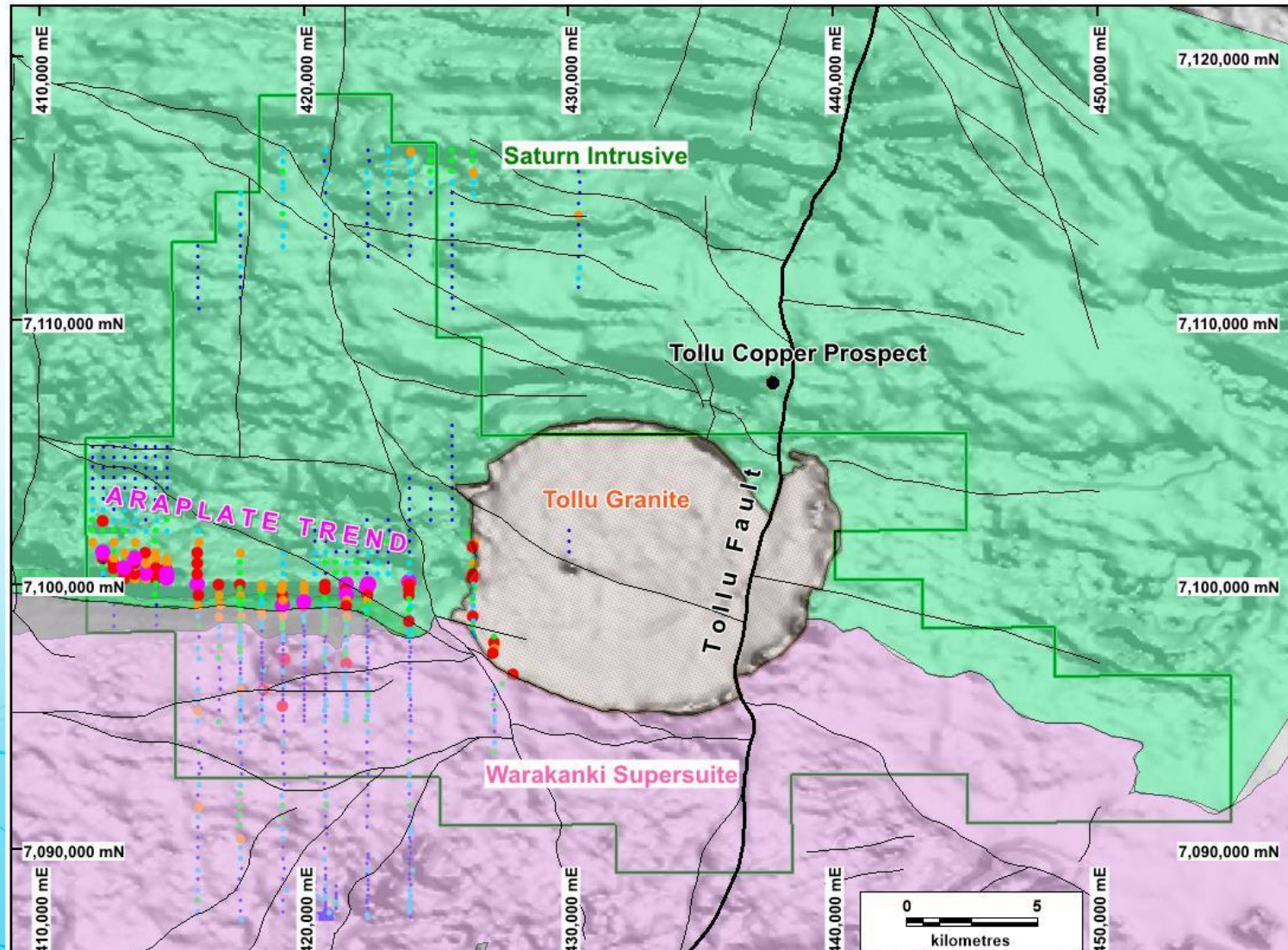
Musgrave Ni Cu PGE Project



Mt Morphett



- “ 12 Km long Cu, Ni, Co PGE Araplate Prospect
- “ IOCG and Hydrothermal Cu associated with Tollu Granite
- “ EM survey to highlight massive sulphide targets along the geochemical anomaly



References and Disclaimer



DISCLAIMER

This presentation has been prepared by **Traka Resources Limited** ABN 63 103 323 173 (**Traka**) for the sole purpose of providing financial, operational and other information to enable recipients to review the business activities of Traka. This presentation is not intended as an offer, invitation, solicitation or recommendation with respect to the purchase or sale of any securities. Nothing in this presentation should be construed as financial product advice, whether personal or general, for the purposes of Section 766B of the *Corporations Act 2001*.

This presentation may contain forward looking information, statements or forecasts that are subject to risks and other factors outside the control of **Traka**. Any forward looking information, statements or forecasts provided is/are considered reasonable in the circumstances and has/have been prepared in good faith and with all due care, but may differ materially from actual future results and performance. **Traka** and its affiliates, any of its directors, agents, officers or employees do not make any representation or warranty, express or implied, as to or endorsement of the accuracy or completeness of any information, statements or forecasts contained in this presentation, and they do not accept any liability for any statements made in, or omitted from, this presentation.

This presentation should not be relied upon as a representation of any matter that an investor should consider in evaluating the business activities of **Traka**. Investors must make and rely upon their own enquiries and due diligence in relation to the subject of this presentation and an investment in **Traka**. A potential investor must assess the merits or otherwise of an investment in **Traka** having regard to their own personal, financial and other circumstances.

The information in this presentation that relates to exploration results is based on information compiled by Mr Patrick Verbeek, a member of the Australasian Institute of Mining and Metallurgy . Mr Verbeek has sufficient experience which is relevant to the style of mineralisation under consideration and to the activity which he is undertaking to qualify as a Competent Person as defined in the 2012 edition of the "Australian Code for Reporting Exploration Results, Mineral Resources and Ore Reserves". Mr Verbeek consents to the inclusion in the presentation of the matters based on information in the form and context in which it appears.

Information included in the presentation is dated 29 November 2019