



5 December 2019

## Krakatoa completes acquisition of Belgravia Project



### Board:

**Colin Locke** (Exec. Chairman)

**David Palumbo** (Non-Exec. Director)

**Timothy Hogan** (Non-Exec. Director)

### Capital Structure:

**175,000,000** Fully Paid Shares

**85,000,000** Options @ 5c exp 31/07/21

**5,000,000** Options @ 7.5c exp 31/07/21

**12,000,000** Options @ 10c exp 24/10/20

**10,893,878** Options @ 40c exp 12/12/19

### ASX Codes:

**KTA, KTAOC**

### Projects

**Belgravia (Au-Cu)**

**Turon (Au-Cu)**

**Mt Clere (REE)**

**Dalgaranga (Ta-Li-Rb)**

**Mac Well (Be, Au)**

Krakatoa Resources Limited ("Krakatoa" or the "Company", ASX: KTA) is pleased to advise that following shareholder approval at the Company's recent Annual General Meeting (refer to ASX release – Results of Meeting dated 28 November 2019), all conditions precedent have now been satisfied and the Company has completed the acquisition of Exploration Licence 8153, comprising the Belgravia Project ("the Project").

As outlined in the terms of the acquisition (refer to ASX release - KTA targets Porphyry in Australia's Discovery Epicentre dated 26 September 2019), the Company has paid AUD\$300,000, issued 10,000,000 fully paid ordinary shares and executed a royalty deed for the 1% Net Smelter Return as consideration for the acquisition of the Project. The Company has also issued 10,000,000 listed options exercisable at \$0.05 on or before 31 July 2021 (ASX: KTAOC) to the facilitator of the acquisition.

The Company is continuing to systematically explore its Bell Valley target, where two major porphyry intrusive complexes have been identified, the Larras Lake Igneous Complex (LLIC) and the Copper Hill Igneous Complex (CHIC). The Bell Valley target represents one of 6 initial targets on the Belgravia Project, within the Lachlan Fold Belt in central New South Wales.

### FOR FURTHER INFORMATION:

Colin Locke

Executive Chairman

+61 457 289 582

### Registered office:

Level 11, London House, 216 St Georges Terrace, Perth, W.A. 6000

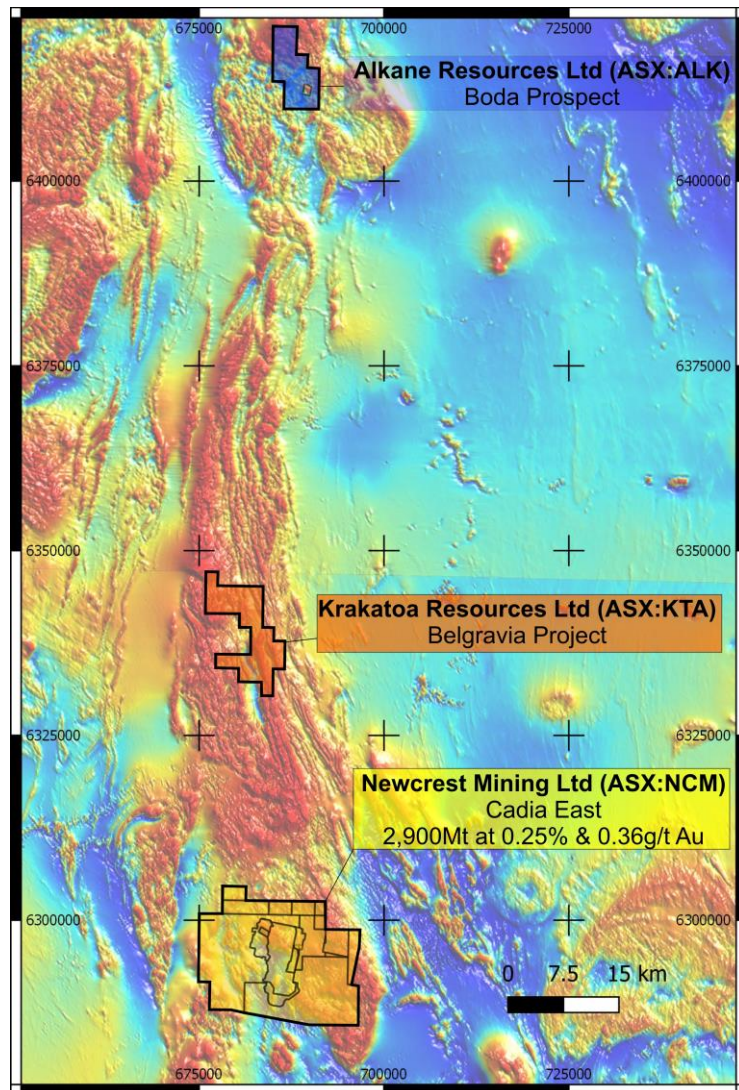
**Ph:** +618 9481 0389 **Fax:** +618 9463 6103 **W:** [www.ktaresources.com](http://www.ktaresources.com) **M:** [info@ktaresources.com](mailto:info@ktaresources.com)

## ABOUT BELGRAVIA PROJECT:

The Belgravia Project covers an area of 80km<sup>2</sup> and is located in the central part of the Molong Volcanic Belt (MVB), which forms as part of the East Lachlan province within the Lachlan Fold Belt, NSW. The East Lachlan region **constitutes the largest porphyry province in Australia.**

The Project lies approximately 7km east of the township of Molong and 20km northwest of the regional centre of Orange, providing excellent road, rail, power, gas and water infrastructure.

The Belgravia Project has 6 initial targets considered highly prospective for porphyry Cu-Au and associated skarn Cu-Au. Historical exploration appears to have failed to adequately consider the regolith and tertiary basalt (up to 40m thick) that obscures much of the prospective geology.



## Registered office:

Level 11, London House, 216 St Georges Terrace, Perth, W.A. 6000

**Ph:** +618 9481 0389 **Fax:** +618 9463 6103 **W:** [www.ktaresources.com](http://www.ktaresources.com) **M:** [info@ktaresources.com](mailto:info@ktaresources.com)